

**COUGH DROPS MENTHOL HONEY LEMON- cough drops menthol pastille**  
**Cardinal Health 110, Inc.**

-----

**Cough Drops Menthol**

**Active Ingredient**

- Menthol 7.5 mg cough suppressant oral anesthetic



◀ Tear here ----- Tear here ▶

## Resealable Bag

1. Tear 2. Separate to Open 3. Press to Reseal

**LEADER**<sup>TM</sup>

NDC 70000-0639-1

# Cough Drops

Menthol | Cough Suppressant  
Oral Anesthetic

**Honey Lemon**  
Flavor

**Gluten-Free**

No Artificial Flavors  
No Artificial Preservatives



\*Actual Size  
Depiction on Back

**COMPARE TO  
HALLS<sup>®</sup>**  
active ingredient†

# 30 DROPS

100% Money  
Back Guarantee

Uses temporarily relieves:

- cough as may occur with a cold
- occasional minor irritation and sore throat

Uses temporarily relieves:

- cough as may occur with a cold
- occasional minor irritation and sore throat

## Warnings

Sore throat warning: severe or persistence sore throat accompanied by high fever, headache, nausea and vomiting may be serious. Consult a doctor promptly. Do not use more than 2 days or administer to children under 12 years of age.

Ask a doctor before use if you have

- a severe throat accompanied by difficulty in breathing or that last more than 2 days
- a sore throat accompanied by fever, headache, rash, swelling, nausea or vomiting

Stop use and consult a doctor if

- sore mouth symptoms do not improve in 7 days or if irritation, pains or redness persists or worsens.

If pregnant or breast-feeding, ask a health professional before use.

Keep this and all drugs out of the reach of children.

In case of accidental overdose, get medical help or contact a Poison Control Center right away.(1-800-222-1222)

## Directions

- Adults and children 12 years and over: dissolve 1 drop slowly in mouth. Repeated every 2 hours as needed or as directed by a doctor.
- Children under 12 years and under do not use
- Store in a cool and dry place
- 10 calories per drop

citric acid, flavors, honey, sucrose, glucose, turmeric (for color)



09488.1

1. Tear 2. Separate to Open 3. Press to Reseal

**LEADER<sup>™</sup>**

# Cough Drops

Menthol | Cough Suppressant  
Oral Anesthetic



\*Actual Size



DISTRIBUTED BY CARDINAL HEALTH

DUBLIN, OHIO 43017

www.myleader.com 1-800-200-6513

Essential to Care<sup>™</sup> since 1979

MADE IN SPAIN

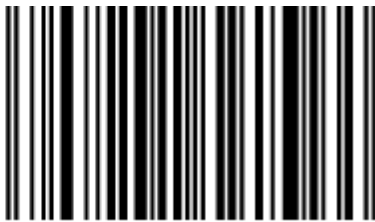
©2023 Cardinal Health. All Rights Reserved. CARDINAL

HEALTH, the Cardinal Health LOGO, ESSENTIAL TO CARE,

LEADER, and the LEADER LOGO are trademarks or

registered trademarks of Cardinal Health. All other marks are the property of their respective owners.

CIN 5838198 REV. 4/23



## Drug Facts

**Active ingredient (in each drop) Purposes**  
Menthol 7.5 mg ..... cough suppressant, oral anesthetic

**Uses** temporarily relieves:

- cough as may occur with a cold.
- occasional minor irritation and sore throat.

### Warnings

**Sore throat warning:** Severe or persistent sore throat accompanied by high fever, headache, nausea, and vomiting may be serious. Consult doctor promptly. Do not use more than 2 days or administer to children under 12 years of age.

### Ask a doctor before use if you have

- a severe cough accompanied by difficulty in breathing or that lasts more than 2 days.
- a sore throat accompanied by fever, headache, rash, swelling, nausea or vomiting.

### When using this product

- do not exceed recommended dosage.

### Stop and consult a doctor if

- sore mouth symptoms do not improve in 7 days, or if irritation, pain, or redness persists or worsens.

### If pregnant or breast-feeding, ask a health professional

before use. **Keep out of the reach of children.** In case of overdose, get medical help or contact a Poison Control Center (1-800-222-1222) right away.

### Directions

- Adults and children 12 years and over:

dissolve 1 drop slowly in the mouth. Repeat every 2 hours as needed or as directed by a doctor.

- Children under 12 years: do not use.

### Other information

- 10 calories per drop.
- Store in a cool and dry place.

### Inactive ingredients

Citric acid, flavors, glucose syrup, honey, turmeric (for coloring).

### Questions?

Or to report an adverse event call 1-833-552-1767.

† This product is not manufactured or distributed by Mondelez International, owner of the registered trademark Halls®.

Leave blank for  
LOT / EXP. DATE





Questions or comments: 1-833-552-1767


09488.1

Return to place of purchase if not satisfied.

Leave blank for  
LOT / EXP. DATE

↑  
All LEADER™ Brand  
Products Have A  
100%  
Money Back  
Guarantee

0



8

CIN 5838198      REV. 4/23

**Warnings**  
Sore throat warning: Severe or persistent sore throat accompanied by high fever, headache, nausea, and vomiting may be serious. Consult doctor promptly. Do not use more than 2 days or administer to children under 12 years of age.

**Ask a doctor before use if you have**  

- a severe cough accompanied by difficulty in breathing or that lasts more than 2 days.
- a sore throat accompanied by fever, headache, rash, swelling, nausea or vomiting.

**When using this product**  

- do not exceed recommended dosage.

**Stop and consult a doctor if**  

- some mouth symptoms do not improve in 7 days, or if irritation, pain, or redness persists or worsens.

**If pregnant or breast-feeding, ask a health professional before use. Keep out of the reach of children.** In case of overdose, get medical help or contact a Poison Control Center (1-800-222-1222) right away.

**Directions**  

- Adults and children 12 years and over: dissolve 1 drop slowly in the mouth. Repeat every 2 hours as needed or as directed by a doctor.
- Children under 12 years: do not use.

**Other information** ■ 10 calories per drop. ■ Store in a cool and dry place.

**Inactive ingredients** Citric acid, flavors, glucose syrup, honey, sucrose, turmeric (for coloring).

**Questions?** Or to report an adverse event call 1-833-552-1767.

‡ This product is not manufactured or distributed by Mondelez International, owner of the registered trademark Halls®.

**\*Actual Size**

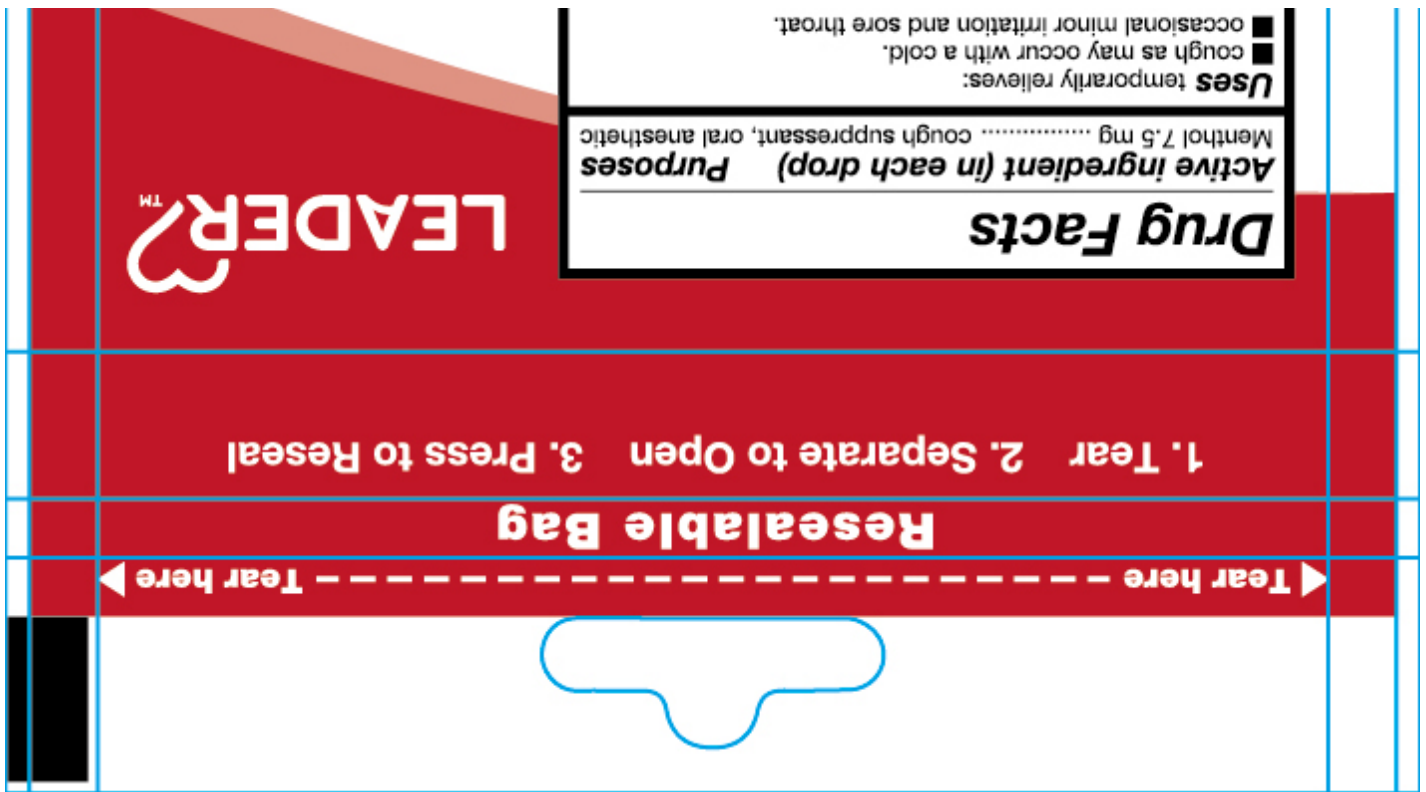


DISTRIBUTED BY CARDINAL HEALTH  
DUBLIN, OHIO 43017  
www.myleader.com 1-800-200-6313  
**Essential to Care™ since 1979**  
MADE IN SPAIN

©2023 Cardinal Health. All Rights Reserved. CARDINAL HEALTH, the Cardinal Health LOGO, ESSENTIAL TO CARE, LEADER, and the LEADER LOGO are trademarks or registered trademarks of Cardinal Health. All other marks are the property of their respective owners.

**CardinalHealth™**

**Cough Drops**  
Menthol | Cough Suppressant  
Oral Anesthetic



## COUGH DROPS MENTHOL HONEY LEMON

cough drops menthol pastille

### Product Information

<b>Product Type</b>	HUMAN OTC DRUG	<b>Item Code (Source)</b>	NDC:70000-0639
<b>Route of Administration</b>	ORAL		

### Active Ingredient/Active Moiety

Ingredient Name	Basis of Strength	Strength
MENTHOL (UNII: L7T10EIP3A) (MENTHOL - UNII:L7T10EIP3A)	MENTHOL	7.5 mg

### Inactive Ingredients

Ingredient Name	Strength
CORN SYRUP (UNII: 9G5L16BK6N)	
HONEY (UNII: Y9H1V576FH)	
SUCROSE (UNII: C151H8M554)	
TURMERIC (UNII: 856YO1Z64F)	
CITRIC ACID MONOHYDRATE (UNII: 2968PHW8QP)	

### Product Characteristics

<b>Color</b>	yellow (Transparent)	<b>Score</b>	score with uneven pieces
<b>Shape</b>	OVAL	<b>Size</b>	25mm
<b>Flavor</b>	HONEY (Lemon)	<b>Imprint Code</b>	None

**Contains****Packaging**

#	Item Code	Package Description	Marketing Start Date	Marketing End Date
1	NDC:70000-0639-1	30 in 1 BAG; Type 0: Not a Combination Product	06/17/2023	

**Marketing Information**

Marketing Category	Application Number or Monograph Citation	Marketing Start Date	Marketing End Date
OTC Monograph Drug	M012	06/17/2023	

**Labeler** - Cardinal Health 110, Inc. (063997360)**Registrant** - Boston Nutraceutical Science SL (466061824)**Establishment**

Name	Address	ID/FEI	Business Operations
Boston Nutraceutical Production SL		468121064	manufacture(70000-0639) , label(70000-0639) , pack(70000-0639)

Revised: 1/2024

Cardinal Health 110, Inc.