

CLOBETASOL PROPIONATE (EMOLLIENT)- clobetasol propionate cream
E. Fougera & Co. a division of Fougera Pharmaceuticals Inc.

HIGHLIGHTS OF PRESCRIBING INFORMATION

These highlights do not include all the information needed to use CLOBETASOL PROPIONATE CREAM, 0.05% (EMOLLIENT) safely and effectively. See full prescribing information for CLOBETASOL PROPIONATE CREAM, 0.05% (EMOLLIENT)

CLOBETASOL PROPIONATE cream, 0.05% (EMOLLIENT), for topical use
Initial U.S. Approval: 1994

----- **INDICATIONS AND USAGE** -----

Clobetasol propionate cream, 0.05% (emollient) is a corticosteroid indicated for:

- The relief of the inflammatory and pruritic manifestations of corticosteroid-responsive dermatoses in patients 12 years of age or older. (1.1)
- The treatment of moderate to severe plaque-type psoriasis in patients 16 years of age and older. (1.2)

Limitations of Use

- Clobetasol propionate cream, 0.05% (emollient) should not be used in the treatment of rosacea or perioral dermatitis, and should not be used on the face, groin, or axillae. (1.3)
- The total dosage should not exceed 50 grams per week.(1.3)
- Avoid use if skin atrophy is present at the treatment site.(1.3)

----- **DOSAGE AND ADMINISTRATION** -----

- Apply a thin layer of Clobetasol propionate cream, 0.05% (emollient) to the affected skin areas twice daily and rub in gently and completely. (2)
- Treatment should be limited to 2 consecutive weeks, and amounts greater than 50 grams per week should not be used. (2)
- In moderate to severe plaque-type psoriasis, Clobetasol propionate cream, 0.05% (emollient) applied to 5% to 10% of body surface area can be used for up to 4 weeks. The total dosage should not exceed 50 grams per week. When dosing for more than 2 weeks, any additional benefit of extending treatment should be weighed against the risk of HPA suppression. (2)

----- **DOSAGE FORMS AND STRENGTHS** -----

Cream: 0.05% (3)

----- **CONTRAINDICATIONS** -----

None (4)

----- **WARNINGS AND PRECAUTIONS** -----

- Clobetasol propionate is a highly potent topical corticosteroid that has been shown to suppress the HPA axis doses as low as 2 grams per day. (5.1)
- Cushing's syndrome, hyperglycemia, and glucosuria can also result from systemic absorption of topical corticosteroids. (5.1)
- Systemic absorption may require periodic evaluation for HPA axis suppression. Modify use if HPA axis suppression develops. (5.1)
- Children may be more susceptible to systemic toxicity from use of topical corticosteroids. (5.1, 8.4)
- Local adverse reactions with topical corticosteroids may occur more frequently with the use of occlusive dressings and higher potency corticosteroids, including clobetasol propionate. These reactions include: folliculitis, acneiform eruptions, hypertrichosis, hypopigmentation, perioral dermatitis, allergic contact dermatitis, secondary infection, striae and miliaria. (5.2)

----- **ADVERSE REACTIONS** -----

- The most common adverse reaction is burning/stinging (incidence 5%); common adverse reactions (incidence < 2%) are pruritis, irritation, erythema, folliculitis, cracking and fissuring of the skin, numbness of the fingers, tenderness in the elbow, skin atrophy, and telangiectasia. (6.1).

FULL PRESCRIBING INFORMATION: CONTENTS*

1 INDICATIONS AND USAGE

- 1.1 Corticosteroid-Responsive Dermatoses
- 1.2 Moderate to Severe Plaque-Type Psoriasis
- 1.3 Limitations of Use

2 DOSAGE AND ADMINISTRATION

3 DOSAGE FORMS AND STRENGTHS

4 CONTRAINDICATIONS

5 WARNINGS AND PRECAUTIONS

- 5.1 Effects on the Endocrine System
- 5.2 Local Adverse Reactions with Topical Corticosteroids
- 5.3 Allergic Contact Dermatitis
- 5.4 Concomitant Skin Infections

6 ADVERSE REACTIONS

- 6.1 Clinical Trials Experience

8 USE IN SPECIFIC POPULATIONS

- 8.1 Pregnancy
- 8.3 Females and Males of Reproductive Potential
- 8.4 Pediatric Use
- 8.5 Geriatric Use

10 OVERDOSAGE

11 DESCRIPTION

12 CLINICAL PHARMACOLOGY

- 12.1 Mechanism of Action
- 12.2 Pharmacodynamics
- 12.3 Pharmacokinetics

13 NONCLINICAL TOXICOLOGY

- 13.1 Carcinogenesis, Mutagenesis, Impairment of Fertility

14 CLINICAL STUDIES

16 HOW SUPPLIED/STORAGE AND HANDLING

17 PATIENT COUNSELING INFORMATION

* Sections or subsections omitted from the full prescribing information are not listed.

FULL PRESCRIBING INFORMATION

1 INDICATIONS AND USAGE

Clobetasol propionate cream, 0.05% (emollient) is a super-high potency corticosteroid indicated for:

1.1 Corticosteroid-Responsive Dermatoses

Clobetasol propionate cream, 0.05% (emollient) is indicated for the relief of the inflammatory and pruritic manifestations of cortico-steroid-responsive dermatoses in patients 12 years of age and older.

Treatment should be limited to 2 consecutive weeks, and the total dosage should not exceed 50 grams per week.

1.2 Moderate to Severe Plaque-Type Psoriasis

Clobetasol propionate cream, 0.05% (emollient) is indicated for the topical treatment of moderate to severe plaque-type psoriasis. Treatment beyond 4 consecutive weeks is not recommended. Use in pediatric patients under 16 years of age is not recommended.

1.3 Limitations of Use

Clobetasol propionate cream, 0.05% (emollient) should not be used in the treatment of rosacea or perioral dermatitis, and should not be used on the face, groin, or axillae.

The total dosage should not exceed 50 grams per week.

Avoid use if skin atrophy is present at the treatment site.

2 DOSAGE AND ADMINISTRATION

Apply a thin layer of Clobetasol propionate cream, 0.05% (emollient) to the affected skin areas twice daily and rub in gently and completely. Wash hands after each application.

Clobetasol propionate cream, 0.05% (emollient) is a super-high potency topical corticosteroid; therefore, **treatment should be limited to 2 consecutive weeks, and amounts greater than 50 grams per week should not be used.**

In moderate to severe plaque-type psoriasis, Clobetasol propionate cream, 0.05% (emollient) applied to 5% to 10% of body surface area can be used for up to 4 weeks. The total dosage should not exceed 50 grams per week. When dosing for more than 2 weeks, any additional benefits of extending treatment should be weighed against the risk of HPA suppression. Therapy should be discontinued when control has been achieved. If no improvement is seen within 2 weeks, reassessment of diagnosis may be necessary. Treatment beyond 4 consecutive weeks is not recommended.

Clobetasol propionate cream, 0.05% (emollient) should not be used with occlusive dressings.

3 DOSAGE FORMS AND STRENGTHS

Cream, 0.05%. Each gram of Clobetasol propionate cream USP, 0.05% (emollient) contains 0.5 mg of clobetasol propionate in a white to off-white cream base.

4 CONTRAINDICATIONS

None

5 WARNINGS AND PRECAUTIONS

5.1 Effects on the Endocrine System

Clobetasol propionate is a highly potent topical corticosteroid that has been shown to suppress the HPA axis at doses as low as 2 grams per day.

Systemic absorption of topical corticosteroids can produce reversible HPA axis suppression with the potential for clinical glucocorticosteroid insufficiency. This may occur during treatment or upon withdrawal of the topical corticosteroid.

Because of the potential for systemic absorption, use of topical corticosteroids may require that patients be periodically evaluated for HPA axis suppression. In a study including 12 subjects ages 18

years and older with psoriasis or atopic dermatitis involving at least 30% body surface area (BSA), adrenal suppression was identified in 3 out of 12 subjects (25%) following 1 week of treatment.

Factors that predispose a patient using a topical corticosteroid to HPA axis suppression include the use of more potent steroids, use over large surface areas, use over prolonged periods, use under occlusion, use on an altered skin barrier, and use in patients with liver failure.

An ACTH stimulation test may be helpful in evaluating patients for HPA axis suppression. If HPA axis suppression is documented, an attempt should be made to gradually withdraw the drug, to reduce the frequency of application, or to substitute a less potent steroid. Manifestations of adrenal insufficiency may require supplemental systemic corticosteroids. Recovery of HPA axis function is generally prompt and complete upon discontinuation of topical corticosteroids.

Cushing's syndrome, hyperglycemia, and unmasking of latent diabetes mellitus can also result from systemic absorption of topical corticosteroids.

Use of more than one corticosteroid-containing product at the same time may increase the total systemic corticosteroid exposure.

Pediatric patients may be more susceptible to systemic toxicity from use of topical corticosteroids. [see *Use in Specific Populations (8.4)*]

5.2 Local Adverse Reactions with Topical Corticosteroids

Local adverse reactions may be more likely to occur with occlusive use, prolonged use or use of higher potency corticosteroids. Reactions may include atrophy, striae, telangiectasias, burning, itching, irritation, dryness, folliculitis, acneiform eruptions, hypopigmentation, hypertrichosis, perioral dermatitis, allergic contact dermatitis, secondary infection, and miliaria. Some local adverse reactions may be irreversible. Clobetasol propionate is not recommended in patients with acne vulgaris, rosacea or perioral dermatitis.

5.3 Allergic Contact Dermatitis

Allergic contact dermatitis with corticosteroids is usually diagnosed by observing a *failure to heal* rather than noting a clinical exacerbation. Clinical diagnosis of allergic contact dermatitis can be confirmed with patch testing. If irritation develops, Clobetasol propionate cream, 0.05% (emollient) should be discontinued and appropriate therapy instituted.

5.4 Concomitant Skin Infections

If concomitant skin infections are present or develop, an appropriate antifungal or antibacterial agent should be used. If a favorable response does not occur promptly, use of Clobetasol propionate cream, 0.05% (emollient) should be discontinued until the infection has been adequately controlled.

6 ADVERSE REACTIONS

6.1 Clinical Trials Experience

Because clinical trials are conducted under widely varying conditions, adverse reaction rates observed in the clinical trials of a drug cannot be directly compared to rates in the clinical trials of another drug and may not reflect the rates observed in clinical practice.

In controlled trials with clobetasol propionate formulations, the following adverse reactions have been reported: burning/stinging, pruritis, irritation, erythema, folliculitis, cracking and fissuring of the skin, numbness of the fingers, tenderness in the elbow, skin atrophy, and telangiectasia. The incidence of local adverse reactions reported in the trials with Clobetasol propionate cream, 0.05% (emollient) was less than 2% of patients treated with the exception of burning/stinging which occurred in 5% of treated patients.

8 USE IN SPECIFIC POPULATIONS

8.1 Pregnancy

Pregnancy Category C.

There are no adequate and well-controlled studies in pregnant women. Therefore, Clobetasol propionate cream, 0.05% (emollient) should be used during pregnancy only if the potential benefit justifies the potential risk to the fetus.

Corticosteroids have been shown to be teratogenic in laboratory animals when administered systemically at relatively low dosage levels. Some corticosteroids have been shown to be teratogenic after dermal application to laboratory animals.

Clobetasol propionate has not been tested for teratogenicity by this route; however, it is absorbed percutaneously, and when administered subcutaneously it was a significant teratogen in both the rabbit and mouse. Clobetasol propionate has greater teratogenic potential than steroids that are less potent.

Teratogenicity studies in mice using the subcutaneous route resulted in fetotoxicity at the highest dose tested (1 mg/kg) and teratogenicity at all dose levels tested down to 0.03 mg/kg. These doses are approximately 0.33 and 0.01 times, respectively, the human topical dose of Clobetasol propionate cream, 0.05% (emollient). Abnormalities seen included cleft palate and skeletal abnormalities.

In rabbits, clobetasol propionate was teratogenic at doses of 3 and 10 mcg/kg. These doses are approximately 0.001 and 0.003 times, respectively, the human topical dose of Clobetasol propionate cream, 0.05% (emollient). Abnormalities seen included cleft palate, cranioschisis, and other skeletal abnormalities.

8.3 Females and Males of Reproductive Potential

Systemically administered corticosteroids appear in human milk and could suppress growth, interfere with endogenous corticosteroid production, or cause other untoward effects. It is not known whether topical administration of corticosteroids could result in sufficient systemic absorption to produce detectable quantities in human milk. Because many drugs are excreted in human milk, caution should be exercised when Clobetasol propionate cream, 0.05% (emollient) is administered to a nursing woman.

8.4 Pediatric Use

Safety and effectiveness of Clobetasol propionate cream, 0.05% (emollient) in pediatric patients have not been established and its use in pediatric patients under 12 years of age is not recommended. In a study including 12 subjects ages 18 years and older with psoriasis or atopic dermatitis involving at least 30% body surface area (BSA), adrenal suppression was identified in 3 out of 12 subjects (25%) following 1 week of treatment. Four-week HPA axis suppression studies with Clobetasol propionate cream, 0.05% (emollient) in pediatric subjects have not been conducted.

Because of a higher ratio of skin surface area to body mass, pediatric patients are at a greater risk than adults of HPA axis suppression and Cushing's syndrome when they are treated with topical corticosteroids. They are therefore also at greater risk of glucocorticosteroid insufficiency during or after withdrawal of treatment. Adverse effects including striae have been reported with inappropriate use of topical corticosteroids in infants and children.

HPA axis suppression, Cushing's syndrome, linear growth retardation, delayed weight gain, and intracranial hypertension have been reported in children receiving topical corticosteroids. Manifestations of adrenal suppression in children include low plasma cortisol levels and absence of response to ACTH stimulation. Manifestations of intracranial hypertension include bulging fontanelles, headaches, and bilateral papilledema.

The use of Clobetasol propionate cream, 0.05% (emollient) for 4 consecutive weeks has not been studied in pediatric patients under 16 years of age.

8.5 Geriatric Use

Clinical studies of Clobetasol propionate cream, 0.05% (emollient) did not include sufficient numbers of subjects aged 65 and older to determine whether they respond differently from younger subjects.

In general, dose selection for an elderly patient should be cautious.

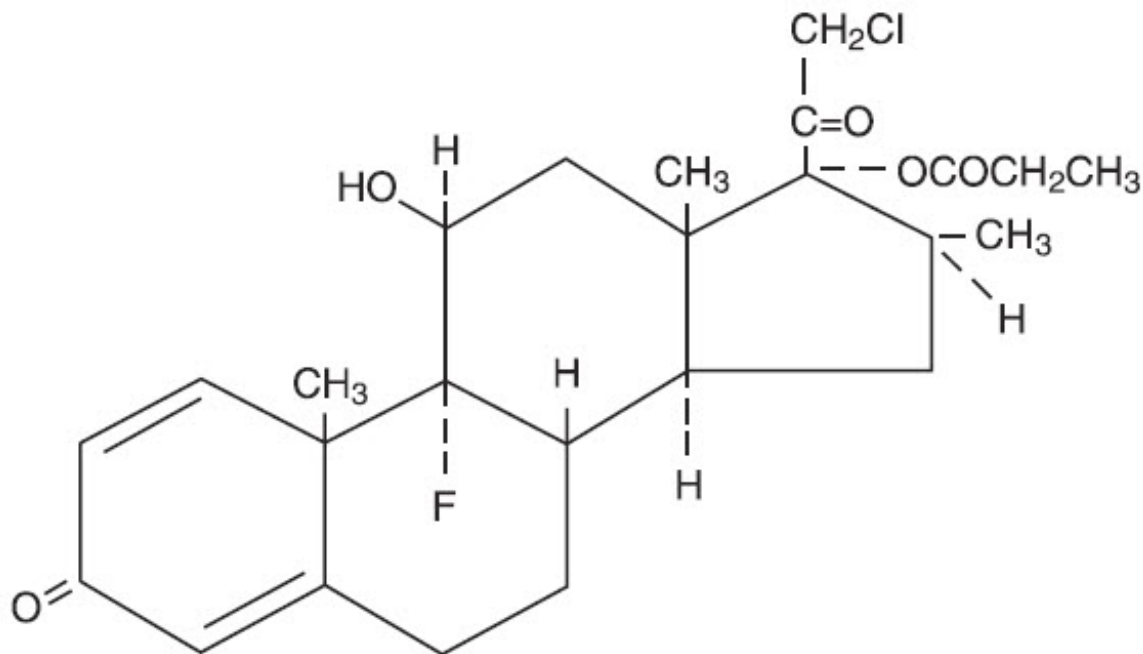
10 OVERDOSAGE

Topically applied Clobetasol propionate cream, 0.05% (emollient) can be absorbed in sufficient amounts to produce systemic effects [see *Warnings and Precautions* (5.1)].

11 DESCRIPTION

Clobetasol propionate cream USP, 0.05% (emollient) contains the active compound clobetasol propionate, a synthetic corticosteroid, for topical use. Clobetasol, an analog of prednisolone, has a high degree of glucocorticoid activity and a slight degree of mineralocorticoid activity.

Chemically, clobetasol propionate is (11 β ,16 β)-21-chloro-9-fluoro-11-hydroxy-16-methyl-17-(1-oxopropoxy)-pregna-1,4-diene-3,20-dione, and it has the following structural formula:



Clobetasol propionate has the molecular formula C₂₅H₃₂ClFO₅ and a molecular weight of 467. It is a white to cream-colored crystalline powder insoluble in water.

Each gram of Clobetasol propionate cream USP, 0.05% (emollient) contains 0.5 mg of clobetasol propionate in a white to off-white cream base consisting of cetostearyl alcohol, isopropyl myristate, propylene glycol, cetomacrogol 1000, dimethicone 350, citric acid, sodium citrate, purified water, and imidurea as a preservative.

12 CLINICAL PHARMACOLOGY

12.1 Mechanism of Action

Like other topical corticosteroids, clobetasol propionate has anti-inflammatory, antipruritic, and vasoconstrictive properties. The mechanism of the anti-inflammatory activity of the topical steroids, in

general, is unclear. However, corticosteroids are thought to act by the induction of phospholipase A₂ inhibitory proteins, collectively called lipocortins. It is postulated that these proteins control the biosynthesis of potent mediators of inflammation such as prostaglandins and leukotrienes by inhibiting the release of their common precursor, arachidonic acid. Arachidonic acid is released from membrane phospholipids by phospholipase A₂.

12.2 Pharmacodynamics

Clobetasol propionate cream, 0.05% (emollient) is in the super-high range of potency as demonstrated in a vasoconstrictor study in healthy subjects when compared with other topical corticosteroids. However, similar blanching scores do not necessarily imply therapeutic equivalence.

12.3 Pharmacokinetics

The extent of percutaneous absorption of topical corticosteroids is determined by many factors, including the vehicle and the integrity of the epidermal barrier. Topical corticosteroids can be absorbed from normal intact skin. Inflammation and/or other disease processes in the skin may increase percutaneous absorption.

13 NONCLINICAL TOXICOLOGY

13.1 Carcinogenesis, Mutagenesis, Impairment of Fertility

Carcinogenesis

Long-term animal studies have not been performed to evaluate the carcinogenic potential of clobetasol propionate.

Mutagenesis

Clobetasol propionate was nonmutagenic in three different test systems: the Ames test, the *Saccharomyces cerevisiae* gene conversion assay, and the *E. Coli* B WP2 fluctuation test.

Impairment of Fertility

Studies in the rat following oral administration at dosage levels up to 50 mg/kg per day revealed no significant effect on the males. The females exhibited an increase in the number of resorbed embryos and a decrease in the number of living fetuses at the highest dose.

14 CLINICAL STUDIES

In a controlled clinical trial involving patients with moderate to severe plaque-type psoriasis, Clobetasol propionate cream, 0.05% (emollient) was applied to 5% to 10% of body surface area. In this trial, there were no clobetasol-treated patients with clinically significant decreases in morning cortisol levels after 4 weeks of treatment; however, morning cortisol levels may not identify patients with adrenal dysfunction.

16 HOW SUPPLIED/STORAGE AND HANDLING

How Supplied

Clobetasol Propionate Cream USP, 0.05% (emollient), is a white to off-white cream, supplied as follows:

NDC 0168-0301-15 15 g tube

NDC 0168-0301-30 30 g tube

NDC 0168-0301-60 60 g tube

Storage and Handling

Store between 15°C and 30°C (59°F and 86°F)

Clobetasol Propionate Cream USP, 0.05% (emollient) should not be refrigerated.

17 PATIENT COUNSELING INFORMATION

Inform patients using topical corticosteroids of the following information and instructions:

- Clobetasol propionate cream, 0.05% (emollient) is for external use only. Avoid contact with the eyes.
- Use as directed. Do not use Clobetasol propionate cream, 0.05% (emollient) for any disorder other than that for which it was prescribed. Do not use longer than the prescribed time period.
- Do not use other corticosteroid-containing products while using Clobetasol propionate cream, 0.05% (emollient) unless directed by the physician.
- The treated skin area should not be bandaged, otherwise covered, or wrapped so as to be occlusive unless directed by the physician.
- Wash hands after applying the medication.
- Report any signs of local or systemic adverse reactions to the physician.
- Inform their physicians that they are using Clobetasol propionate cream, 0.05% (emollient) if surgery is contemplated. If you go to another doctor for illness, injury or surgery, tell the doctor you are using Clobetasol propionate cream, 0.05% (emollient).
- Do not use Clobetasol propionate cream, 0.05% (emollient) on the face, underarms or groin areas.
- As with other corticosteroids, therapy should be discontinued when control is achieved. If no improvement is seen within 2 weeks, contact the physician.
- Use no more than 50 grams per week of Clobetasol propionate cream, 0.05% (emollient).
- Store between 59°F and 86° (15°C and 30°C). Do not refrigerate.

Fougera Pharmaceuticals Inc.

E. FOUGERA & CO.

A division of Fougera Pharmaceuticals Inc.

Melville, New York 11747

46121639C

R09/16

#262

Package Label - Principal Display Panel – 15g Tube Label

NDC 0168-0301-15

**CLOBETASOL PROPIONATE CREAM USP, 0.05%
(EMOLLIENT)**

Rx only

FOR TOPICAL USE ONLY.

NET WT 15 grams

NDC 0168-0301-15

**Clobetasol Propionate
Cream USP, 0.05%
(Emollient)**

FOR TOPICAL USE ONLY.
Not for ophthalmic, oral, or intravaginal use.

fougera®

R only

Each gram contains: Clobetasol propionate 0.5 mg in a cream base composed of cetostearyl alcohol, isopropyl myristate, propylene glycol, cetomacrogol 1000, dimethicone 350, citric acid, sodium citrate, purified water, and imidurea as a preservative.

NET WT 15 grams

USUAL DOSAGE: See package insert for full prescribing information.
Store between 15° and 30°C (59° and 86°F).
Do not refrigerate.

**KEEP OUT OF THE REACH
OF CHILDREN.**

TO OPEN: Use cap to puncture seal.

IMPORTANT: Do not use if seal has been punctured or is not visible.

See crimp of tube for Lot Number and Expiration Date.

E. FOUGERA & CO.
A division of Fougera Pharmaceuticals Inc.
Melville, New York 11747

U4549E R09/16



Package Label - Principal Display Panel – 15g Tube Carton

NDC 0168-0301-15

Rx only

**CLOBETASOL PROPIONATE CREAM USP, 0.05%
(EMOLLIENT)**

FOR TOPICAL USE ONLY.

NET WT 15 grams



CLOBETASOL PROPIONATE (EMOLLIENT)

clobetasol propionate cream

Product Information

| | | | |
|--------------------------------|-------------------------|---------------------------|---------------|
| Product Type | HUMAN PRESCRIPTION DRUG | Item Code (Source) | NDC:0168-0301 |
| Route of Administration | TOPICAL | | |

Active Ingredient/Active Moiety

| Ingredient Name | Basis of Strength | Strength |
|---|-----------------------|---------------|
| clobetasol propionate (UNII: 779619577M) (clobetasol - UNII:ADN79D536H) | clobetasol propionate | 0.5 mg in 1 g |

Inactive Ingredients

| Ingredient Name | Strength |
|--|----------|
| cetostearyl alcohol (UNII: 2DMT128M1S) | |
| isopropyl myristate (UNII: 0RE8K4LNJS) | |
| propylene glycol (UNII: 6DC9Q167V3) | |
| ceteth-20 (UNII: I835H2IHHX) | |
| dimethicone 350 (UNII: 2Y53S6ATLU) | |
| citric acid monohydrate (UNII: 2968PHW8QP) | |

| | |
|--|--|
| water (UNII: 059QF0KO0R) | |
| imidurea (UNII: M629807ATL) | |
| SODIUM CITRATE, UNSPECIFIED FORM (UNII: 1Q73Q2JULR) | |

Packaging

| # | Item Code | Package Description | Marketing Start Date | Marketing End Date |
|---|------------------|---|----------------------|--------------------|
| 1 | NDC:0168-0301-15 | 1 in 1 CARTON | 05/26/1999 | |
| 1 | | 15 g in 1 TUBE; Type 0: Not a Combination Product | | |
| 2 | NDC:0168-0301-30 | 1 in 1 CARTON | 05/26/1999 | |
| 2 | | 30 g in 1 TUBE; Type 0: Not a Combination Product | | |
| 3 | NDC:0168-0301-60 | 1 in 1 CARTON | 05/26/1999 | |
| 3 | | 60 g in 1 TUBE; Type 0: Not a Combination Product | | |

Marketing Information

| Marketing Category | Application Number or Monograph Citation | Marketing Start Date | Marketing End Date |
|--------------------|--|----------------------|--------------------|
| ANDA | ANDA075430 | 05/26/1999 | |

Labeler - E. Fougera & Co. a division of Fougera Pharmaceuticals Inc. (043838424)

Revised: 9/2018

E. Fougera & Co. a division of Fougera Pharmaceuticals Inc.