

ORPHENADRINE CITRATE- orphenadrine citrate tablet, extended release

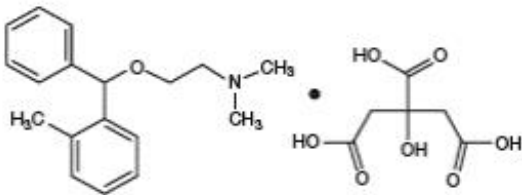
Advanced Rx Pharmacy of Tennessee, LLC

Orphenadrine Citrate Extended-Release Tablets

Rx Only

DESCRIPTION

Orphenadrine citrate is the citrate salt of orphenadrine. It occurs as a white, crystalline powder having a bitter taste. It is practically odorless; sparingly soluble in water, slightly soluble in alcohol. The chemical name of orphenadrine citrate is (\pm) -*N,N*-Dimethyl-2-[(*o*-methyl- α -phenylbenzyl)oxy]ethylamine citrate (1:1) having molecular formula $C_{18}H_{23}NO \cdot C_6H_8O_7$ and molecular weight of 461.51. It has the following structural formula:



Each tablet for oral administration contains 100 mg orphenadrine citrate. Each Orphenadrine citrate extended- release tablet contains the following inactive ingredients: hydroxypropyl methylcellulose, lactose monohydrate and magnesium stearate.

CLINICAL PHARMACOLOGY

The mode of therapeutic action has not been clearly identified, but may be related to its analgesic properties. Orphenadrine citrate does not directly relax tense muscles in man. Orphenadrine citrate also possesses anti-cholinergic actions.

INDICATIONS AND USAGE

Orphenadrine citrate extended-release tablets are indicated as an adjunct to rest, physical therapy, and other measures for the relief of discomfort associated with acute painful musculoskeletal conditions.

CONTRAINDICATIONS

Orphenadrine citrate extended-release tablets are contraindicated in patients with glaucoma, pyloric or duodenal obstruction, stenosing peptic ulcers, prostatic hypertrophy or obstruction of the bladder neck, cardio-spasm (mega-esophagus) and myasthenia gravis. Orphenadrine citrate tablets are contraindicated in patients who have demonstrated a previous hypersensitivity to the drug.

WARNINGS

Some patients may experience transient episodes of light-headedness, dizziness or syncope. Orphenadrine may impair the ability of the patient to engage in potentially hazardous activities such as operating machinery or driving a motor vehicle; ambulatory patients should therefore be cautioned accordingly.

PRECAUTIONS

Confusion, anxiety and tremors have been reported in few patients receiving propoxyphene and orphenadrine concomitantly. As these symptoms may be simply due to an additive effect, reduction of dosage and/or discontinuation of one or both agents is recommended in such cases. Orphenadrine citrate should be used with caution in patients with tachycardia, cardiac decompensation, coronary insufficiency, cardiac arrhythmias.

Safety of continuous long-term therapy with orphenadrine has not been established. Therefore, if orphenadrine is prescribed for prolonged use, periodic monitoring of blood, urine and liver function values is recommended.

Pregnancy

Pregnancy Category C

Animal reproduction studies have not been conducted with orphenadrine. It is also not known whether orphenadrine can cause fetal harm when administered to a pregnant woman or can affect reproduction capacity. Orphenadrine should be given to a pregnant woman only if clearly needed.

Pediatric Use

Safety and effectiveness in pediatric patients have not been established.

ADVERSE REACTIONS

Adverse reactions of orphenadrine are mainly due to the mild anticholinergic action of orphenadrine, and are usually associated with higher dosage. Dryness of the mouth is usually the first adverse effect to appear. When the daily dose is increased, possible adverse effects include: tachycardia, palpitation, urinary hesitancy or retention, blurred vision, dilatation of pupils, increased ocular tension, weakness, nausea, vomiting, headache, dizziness, constipation, drowsiness, hypersensitivity reactions, pruritus, hallucinations, agitation, tremor, gastric irritation, and rarely urticaria and other dermatoses. Infrequently, an elderly patient may experience some degree of mental confusion.

These adverse reactions can usually be eliminated by reduction in dosage. Very rare cases of aplastic anemia associated with the use of orphenadrine tablets have been reported. No causal relationship has been established.

DRUG ABUSE AND DEPENDENCE

Orphenadrine has been chronically abused for its euphoric effects. The mood elevating effects may occur at therapeutic doses of orphenadrine.

OVERDOSAGE

Orphenadrine is toxic when overdosed and typically induces anticholinergic effects. In a review of orphenadrine toxicity, the minimum lethal dose was found to be 2 to 3 grams for adults; however, the range of toxicity is variable and unpredictable.

Treatment for orphenadrine overdose is evacuation of stomach contents (when necessary), charcoal at repeated doses, intensive monitoring, and appropriate supportive treatment of any emergent anticholinergic effects.

DOSAGE AND ADMINISTRATION

Adults

Two tablets per day; one in the morning and one in the evening.

HOW SUPPLIED

Orphenadrine citrate extended-release tablets 100 mg are round, white to off-white tablets, debossed NL4 on one side and plain on the other side and are supplied as:

Bottles of 30 tablets NDC 80425-0340-01

Bottles of 60 tablets NDC 80425-0340-02

Store at 20°-25°C (68°-77°F) [see USP Controlled Room Temperature].

Dispense in a tight, light-resistant container.

Manufactured by

Novel Laboratories, Inc.

Somerset, NJ 08873

Manufactured For

Lupin Pharmaceuticals, Inc.

Baltimore, MD 21202

PI4800000204

Rev: 06/2017

Distributed by:

Advanced Rx Pharmacy of Tennessee, LLC

PACKAGE LABEL.PRINCIPAL DISPLAY PANEL

Packed By: **AdvancedRx** NashvilleTN, 37217

Store at 20°-25°C (68°-77°F)
Caution: Federal law PROHIBITS Transfer of this drug to any person other than the patient for whom it was prescribed

AdvancedRx NashvilleTN, 37217

Store at 20°-25°C (68°-77°F)
Caution: Federal law PROHIBITS Transfer of this drug to any person other than the patient for whom it was prescribed

ORPHENADRINE CITRATE ER 100MG TABLET

ORPHENADRINE CITRATE ER 100MG TABLET

#30

Compare to NORFLEX
NDC: 80425-0340-01 Source NDC: 43386-0480-26
Lot: 300RP100724 Expires: 7/31/2024

#60

Compare to NORFLEX
NDC: 80425-0340-02 Source NDC: 43386-0480-26
Lot: XXXXXX Expires: 8/16/2023

Rx Only

ORPHENADRINE CITRATE ER 100MG TABLET #30
NDC: 80425-0340-01
Source NDC: 43386-0480-26
Lot: 300RP100724 Exp:7/31/2024

GAVIS PHARMACEU
S/N: 000000153529

ORPHENADRINE CITRATE ER 100MG TABLET #60
NDC: 80425-0340-02
Source NDC: 43386-0480-26
Lot: XXXXXX Exp:8/16/2023

GAVIS PHARMACEU
S/N: 000000170259

ORPHENADRINE CITRATE

orphenadrine citrate tablet, extended release

Product Information			
Product Type	HUMAN PRESCRIPTION DRUG	Item Code (Source)	NDC:80425-0340(NDC:43386-480)
Route of Administration	ORAL		

Active Ingredient/Active Moiety		
Ingredient Name	Basis of Strength	Strength
ORPHENADRINE CITRATE (UNII: X0A40N8I4S) (ORPHENADRINE - UNII:AL805O9OG9)	ORPHENADRINE CITRATE	100 mg

Inactive Ingredients	
Ingredient Name	Strength
HYPROMELLOSES (UNII: 3NXW29V3WO)	
LACTOSE MONOHYDRATE (UNII: EWQ57Q8I5X)	
MAGNESIUM STEARATE (UNII: 70097M6I30)	

Product Characteristics			
Color	white	Score	no score
Shape	ROUND	Size	10mm
Flavor		Imprint Code	NL4
Contains			

Packaging				
#	Item Code	Package Description	Marketing Start Date	Marketing End Date
1	NDC:80425-0340-1	30 in 1 BOTTLE; Type 0: Not a Combination Product	05/23/2023	
2	NDC:80425-0340-2	60 in 1 BOTTLE; Type 0: Not a Combination Product	08/17/2023	

Marketing Information

Marketing Category	Application Number or Monograph Citation	Marketing Start Date	Marketing End Date
ANDA	ANDA040284	05/23/2023	

Labeler - Advanced Rx Pharmacy of Tennessee, LLC (117023142)

Establishment

Name	Address	ID/FEI	Business Operations
Advanced Rx Pharmacy of Tennessee, LLC		117023142	repack(80425-0340)

Revised: 8/2023

Advanced Rx Pharmacy of Tennessee, LLC