

DIPROLENE AF- betamethasone dipropionate cream
Merck Sharp & Dohme Corp.

HIGHLIGHTS OF PRESCRIBING INFORMATION

These highlights do not include all the information needed to use DIPROLENE AF Cream safely and effectively. See full prescribing information for DIPROLENE AF Cream.

DIPROLENE[®] AF (augmented betamethasone dipropionate) cream, for topical use
Initial U.S. Approval: 1983

----- **INDICATIONS AND USAGE** -----

DIPROLENE AF Cream is a corticosteroid indicated for the relief of the inflammatory and pruritic manifestations of corticosteroid-responsive dermatoses in patients 13 years of age and older. (1)

----- **DOSAGE AND ADMINISTRATION** -----

- Apply a thin film to the affected skin areas once or twice daily. (2)
- Discontinue therapy when control is achieved. (2)
- Use no more than 50 g per week. (2)
- Do not use with occlusive dressings unless directed by a physician. (2)
- Avoid use on the face, groin, or axillae, or if skin atrophy is present at the treatment site. (2)
- Not for oral, ophthalmic, or intravaginal use. (2)

----- **DOSAGE FORMS AND STRENGTHS** -----

- Cream, 0.05% (3)

----- **CONTRAINDICATIONS** -----

- Hypersensitivity to any component of this medicine. (4)

----- **WARNINGS AND PRECAUTIONS** -----

- Effects on endocrine system: DIPROLENE AF Cream can cause reversible HPA axis suppression with the potential for glucocorticosteroid insufficiency during and after withdrawal of treatment. Risk factor(s) include the use of high-potency topical corticosteroids, use over a large surface area or to areas under occlusion, prolonged use, altered skin barrier, liver failure, and use in pediatric patients. Modify use should HPA axis suppression develop. (5.1, 8.4)
- Ophthalmic Adverse Reactions: DIPROLENE AF Cream may increase the risk of cataracts and glaucoma. If visual symptoms occur, consider referral to an ophthalmologist for evaluation. (5.2)

----- **ADVERSE REACTIONS** -----

- The most common adverse reaction reported in 0.4% of adult patients is stinging. (6.1)
- The most common adverse reactions reported in 10% of pediatric patients are signs of skin atrophy, telangiectasia, bruising, shininess. (6.1, 8.4)

To report SUSPECTED ADVERSE REACTIONS, contact Merck Sharp & Dohme Corp., a subsidiary of Merck & Co., Inc., at 1-877-888-4231 or FDA at 1-800-FDA-1088 or www.fda.gov/medwatch.

See 17 for PATIENT COUNSELING INFORMATION and FDA-approved patient labeling.

Revised: 6/2020

FULL PRESCRIBING INFORMATION: CONTENTS*

1 INDICATIONS AND USAGE

2 DOSAGE AND ADMINISTRATION

3 DOSAGE FORMS AND STRENGTHS

4 CONTRAINDICATIONS

5 WARNINGS AND PRECAUTIONS

5.1 Effects on Endocrine System

5.2 Ophthalmic Adverse Reactions

5.3 Allergic Contact Dermatitis

6 ADVERSE REACTIONS

6.1 Clinical Trials Experience

6.2 Postmarketing Experience

8 USE IN SPECIFIC POPULATIONS

8.1 Pregnancy

8.2 Lactation

8.4 Pediatric Use

8.5 Geriatric Use

11 DESCRIPTION

12 CLINICAL PHARMACOLOGY

12.1 Mechanism of Action

12.2 Pharmacodynamics

12.3 Pharmacokinetics

13 NONCLINICAL TOXICOLOGY

13.1 Carcinogenesis, Mutagenesis, Impairment of Fertility

14 CLINICAL STUDIES

16 HOW SUPPLIED/STORAGE AND HANDLING

17 PATIENT COUNSELING INFORMATION

* Sections or subsections omitted from the full prescribing information are not listed.

FULL PRESCRIBING INFORMATION

1 INDICATIONS AND USAGE

DIPROLENE[®] AF Cream is a corticosteroid indicated for the relief of the inflammatory and pruritic manifestations of corticosteroid-responsive dermatoses in patients 13 years of age or older.

2 DOSAGE AND ADMINISTRATION

Apply a thin film of DIPROLENE AF Cream to the affected skin areas once or twice daily.

Therapy should be discontinued when control is achieved. DIPROLENE AF Cream is a high-potency corticosteroid. Treatment with DIPROLENE AF Cream should not exceed 50 g per week because of the potential for the drug to suppress the hypothalamic-pituitary-adrenal (HPA) axis [*see Warnings and Precautions (5.1)*].

DIPROLENE AF Cream should not be used with occlusive dressings unless directed by a physician.

Avoid contact with eyes. Wash hands after each application.

Avoid use on the face, groin, or axillae, or if skin atrophy is present at the treatment site.

DIPROLENE AF Cream is for topical use only. It is not for oral, ophthalmic, or intravaginal use.

3 DOSAGE FORMS AND STRENGTHS

Cream, 0.05%. Each gram of DIPROLENE AF Cream, 0.05% contains 0.643 mg betamethasone dipropionate (equivalent to 0.5 mg betamethasone) in a white cream base.

4 CONTRAINDICATIONS

DIPROLENE AF Cream is contraindicated in patients who are hypersensitive to betamethasone dipropionate, to other corticosteroids, or to any ingredient in this preparation.

5 WARNINGS AND PRECAUTIONS

5.1 Effects on Endocrine System

DIPROLENE AF Cream can produce reversible hypothalamic-pituitary-adrenal (HPA) axis suppression with the potential for glucocorticosteroid insufficiency. This may occur during treatment or after withdrawal of treatment. Factors that predispose to HPA axis suppression include the use of high-potency steroids, large treatment surface areas, prolonged use, use of occlusive dressings, altered skin barrier, liver failure, and young age. Evaluation for HPA axis suppression may be done by using the adrenocorticotrophic hormone (ACTH) stimulation test.

DIPROLENE AF Cream 0.05% was applied once daily at 7 grams per day for 1 week to diseased skin, in adult subjects with psoriasis or atopic dermatitis, to study its effects on the HPA axis. The results suggested that the drug lowered adrenal corticosteroid secretion, although plasma cortisol levels did not go below the lower limit of the normal range.

In an open-label pediatric trial of 60 evaluable subjects (3 months to 12 years of age), 19 subjects showed evidence of HPA axis suppression. Four (4) subjects were tested 2 weeks after discontinuation of DIPROLENE AF Cream 0.05%, and 3 of the 4 (75%) had complete recovery of HPA axis function. The proportion of subjects with adrenal suppression in this trial was progressively greater, the younger the age group.

If HPA axis suppression is documented, gradually withdraw the drug, reduce the frequency of application, or substitute with a less potent corticosteroid. Infrequently, signs and symptoms of steroid withdrawal may occur, requiring supplemental systemic corticosteroids.

Cushing's syndrome and hyperglycemia may also occur with topical corticosteroids. These events are rare and generally occur after prolonged exposure to excessively large doses, especially of high-potency topical corticosteroids.

Pediatric patients may be more susceptible to systemic toxicity due to their larger skin surface to body mass ratios [*see Use in Specific Populations (8.4)*].

5.2 Ophthalmic Adverse Reactions

Use of topical corticosteroids, including DIPROLENE AF Cream, may increase the risk of posterior subcapsular cataracts and glaucoma. Cataracts and glaucoma have been reported postmarketing with the use of topical corticosteroid products, including DIPROLENE AF Cream [*see Adverse Reactions (6.2)*].

Avoid contact of DIPROLENE AF Cream with eyes. Advise patients to report any visual symptoms and consider referral to an ophthalmologist for evaluation.

5.3 Allergic Contact Dermatitis

Allergic contact dermatitis with corticosteroids is usually diagnosed by observing failure to heal rather than noting a clinical exacerbation. Such an observation should be corroborated with appropriate diagnostic patch testing. If irritation develops, topical corticosteroids should be discontinued and appropriate therapy instituted.

6 ADVERSE REACTIONS

6.1 Clinical Trials Experience

Because clinical trials are conducted under widely varying conditions, adverse reaction rates observed in the clinical trials of a drug cannot be directly compared to rates in the clinical trials of another drug

and may not reflect the rates observed in clinical practice.

In controlled clinical trials, involving 242 adult subjects, the adverse reaction associated with the use of DIPROLENE AF Cream reported at a frequency of 0.4% was stinging. It occurred in 1 subject.

In a controlled clinical trial involving 67 pediatric subjects from 3 months to 12 years of age, the adverse reactions associated with the use of DIPROLENE AF Cream occurred in 7 of 67 (10%) subjects. Reported reactions included signs of skin atrophy (telangiectasia, bruising, shininess).

6.2 Postmarketing Experience

Because adverse reactions are reported voluntarily from a population of uncertain size, it is not always possible to reliably estimate their frequency or establish a causal relationship to drug exposure.

Postmarketing reports for local adverse reactions to topical corticosteroids may also include: burning, itching, irritation, dryness, folliculitis, acneiform eruptions, hypopigmentation, perioral dermatitis, allergic contact dermatitis, secondary infection, hypertrichosis, skin atrophy, striae, and miliaria.

Hypersensitivity reactions, consisting of predominantly skin signs and symptoms, e.g., contact dermatitis, pruritus, bullous dermatitis, and erythematous rash have been reported.

Ophthalmic adverse reactions of cataracts, glaucoma, increased intraocular pressure, and central serous chorioretinopathy have been reported with the use of topical corticosteroids, including topical betamethasone products.

8 USE IN SPECIFIC POPULATIONS

8.1 Pregnancy

Risk Summary

There are no available data on DIPROLENE AF Cream use in pregnant women to identify a drug-associated risk of major birth defects, miscarriage, or adverse maternal or fetal outcomes.

Observational studies suggest an increased risk of low birthweight infants with the use of greater than 300 grams of potent or very potent topical corticosteroid during a pregnancy. Advise pregnant women that DIPROLENE AF Cream may increase the risk of having a low birthweight infant and to use DIPROLENE AF Cream on the smallest area of skin and for the shortest duration possible.

In animal reproduction studies, increased malformations, including umbilical hernias, cephalocele, and cleft palate, were observed after intramuscular administration of betamethasone dipropionate to pregnant rabbits. The available data do not allow the calculation of relevant comparisons between the systemic exposure of betamethasone dipropionate in animal studies to the systemic exposure that would be expected in humans after topical use of DIPROLENE AF Cream (*see Data*).

The background risk of major birth defects and miscarriage for the indicated population is unknown. All pregnancies have a background risk of birth defect, loss, or other adverse outcomes. In the U.S. general population, the estimated risk of major birth defects and miscarriage in clinically recognized pregnancies is 2 to 4% and 15 to 20%, respectively.

Data

Animal Data

Betamethasone dipropionate has been shown to cause malformations in rabbits when given by the intramuscular route at doses of 0.05 mg/kg. The abnormalities observed included umbilical hernias, cephalocele, and cleft palate.

8.2 Lactation

Risk Summary

There are no data regarding the excretion of betamethasone dipropionate in breast milk, the effects on the breastfed infant, or the effects on milk production after topical application of DIPROLENE AF Cream to women who are breastfeeding.

It is possible that topical administration of large amounts of betamethasone dipropionate could result in sufficient systemic absorption to produce detectable quantities in human milk. The developmental and health benefits of breastfeeding should be considered along with the mother's clinical need for DIPROLENE AF Cream and any potential adverse effects on the breastfed infant from DIPROLENE AF Cream or from the underlying maternal condition.

Clinical Considerations

To minimize potential exposure to the breastfed infant via breast milk, use DIPROLENE AF Cream on the smallest area of skin and for the shortest duration possible while breastfeeding. Advise breastfeeding women not to apply DIPROLENE AF Cream directly to the nipple and areola to avoid direct infant exposure [see *Use in Specific Populations (8.4)*].

8.4 Pediatric Use

Use of DIPROLENE AF Cream in pediatric patients younger than 13 years of age is not recommended due to the potential for HPA axis suppression [see *Warnings and Precautions (5.1)*].

In an open-label HPA axis safety trial in subjects 3 months to 12 years of age with atopic dermatitis, DIPROLENE AF Cream 0.05% was applied twice daily for 2 to 3 weeks over a mean body surface area of 58% (range 35% to 95%). In 19 of 60 (32%) evaluable subjects, adrenal suppression was indicated by either a ≤ 5 mcg/dL pre-stimulation cortisol, or a cosyntropin post-stimulation cortisol ≤ 18 mcg/dL and/or an increase of < 7 mcg/dL from the baseline cortisol. Out of the 19 subjects with HPA axis suppression, 4 subjects were tested 2 weeks after discontinuation of DIPROLENE AF Cream, and 3 of the 4 (75%) had complete recovery of HPA axis function. The proportion of subjects with adrenal suppression in this trial was progressively greater, the younger the age group.

Because of a higher ratio of skin surface area to body mass, pediatric patients are at a greater risk than adults of systemic toxicity when treated with topical drugs. They are, therefore, also at greater risk of HPA axis suppression and adrenal insufficiency upon the use of topical corticosteroids.

Rare systemic effects such as Cushing's syndrome, linear growth retardation, delayed weight gain, and intracranial hypertension have been reported in pediatric patients, especially those with prolonged exposure to large doses of high potency topical corticosteroids.

Local adverse reactions including skin atrophy have also been reported with use of topical corticosteroids in pediatric patients.

Avoid use of DIPROLENE AF Cream in the treatment of diaper dermatitis.

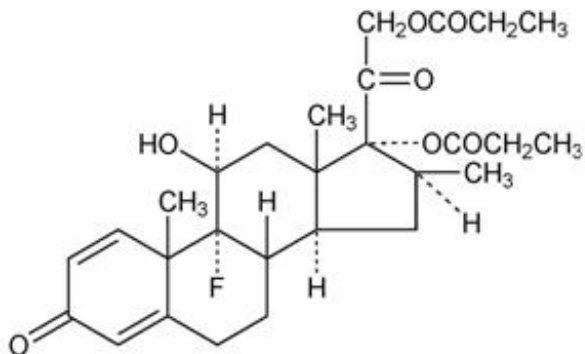
8.5 Geriatric Use

Clinical trials of DIPROLENE AF Cream included 104 subjects who were 65 years of age and over and 8 subjects who were 75 years of age and over. No overall differences in safety or effectiveness were observed between these subjects and younger subjects, and other reported clinical experience has not identified differences in responses between the elderly and younger patients. However, greater sensitivity of some older individuals cannot be ruled out.

11 DESCRIPTION

DIPROLENE AF (augmented betamethasone dipropionate) Cream 0.05% contains betamethasone dipropionate USP, a synthetic adrenocorticosteroid, for topical use in a cream base. Betamethasone, an analog of prednisolone, has a high degree of corticosteroid activity and a slight degree of mineralocorticoid activity. Betamethasone dipropionate is the 17,21-dipropionate ester of betamethasone.

Chemically, betamethasone dipropionate is 9-fluoro-11 β ,17,21-trihydroxy-16 β -methylpregna-1,4-diene-3,20-dione 17,21-dipropionate, with the empirical formula C₂₈H₃₇FO₇, a molecular weight of 504.6, and the following structural formula:



Betamethasone dipropionate is a white to creamy white, odorless crystalline powder, insoluble in water.

Each gram of DIPROLENE AF Cream 0.05% contains: 0.643 mg betamethasone dipropionate USP (equivalent to 0.5 mg betamethasone) in a white cream base of carbomer 940; cetareth-30; chlorocresol; cyclomethicone; glyceryl oleate/propylene glycol; propylene glycol; purified water; sodium hydroxide; sorbitol solution; white petrolatum; and white wax.

12 CLINICAL PHARMACOLOGY

12.1 Mechanism of Action

Corticosteroids play a role in cellular signaling, immune function, inflammation, and protein regulation; however, the precise mechanism of action of DIPROLENE AF Cream in corticosteroid responsive dermatoses is unknown.

12.2 Pharmacodynamics

Vasoconstrictor Assay

Trials performed with DIPROLENE AF Cream, 0.05% indicate that it is in the high range of potency as demonstrated in vasoconstrictor trials in healthy subjects when compared with other topical corticosteroids. However, similar blanching scores do not necessarily imply therapeutic equivalence.

12.3 Pharmacokinetics

No pharmacokinetics trials have been conducted with DIPROLENE AF Cream 0.05%. The extent of percutaneous absorption of topical corticosteroids is determined by many factors including the vehicle, the integrity of the epidermal barrier, and the use of occlusive dressings.

Topical corticosteroids can be absorbed through normal intact skin. Inflammation and/or other disease processes in the skin may increase percutaneous absorption. Occlusive dressings substantially increase the percutaneous absorption of topical corticosteroids [see *Dosage and Administration (2)*].

Once absorbed through the skin, topical corticosteroids enter pharmacokinetic pathways similar to systemically administered corticosteroids. Corticosteroids are bound to plasma proteins in varying degrees, are metabolized primarily in the liver, and excreted by the kidneys. Some of the topical corticosteroids and their metabolites are also excreted into the bile.

13 NONCLINICAL TOXICOLOGY

13.1 Carcinogenesis, Mutagenesis, Impairment of Fertility

Long-term animal studies have not been performed to evaluate the carcinogenic potential of betamethasone dipropionate.

Betamethasone was negative in the bacterial mutagenicity assay (*Salmonella typhimurium* and *Escherichia coli*), and in the mammalian cell mutagenicity assay (CHO/HGPRT). It was positive in the *in vitro* human lymphocyte chromosome aberration assay, and equivocal in the *in vivo* mouse bone marrow micronucleus assay.

Studies in rabbits, mice, and rats using intramuscular doses up to 1, 33, and 2 mg/kg, respectively, resulted in dose-related increases in fetal resorptions in rabbits and mice.

14 CLINICAL STUDIES

The safety and efficacy of DIPROLENE AF Cream for the treatment of corticosteroid-responsive dermatoses have been established in two randomized and active controlled trials in subjects with chronic plaque psoriasis. A total of 81 subjects who received DIPROLENE AF Cream were included in these trials. These trials evaluated DIPROLENE AF Cream applied once or twice daily for 14 and 21 days, respectively, on bilateral paired psoriatic lesions. DIPROLENE AF Cream was shown to be effective in relieving the signs and symptoms of chronic plaque psoriasis.

16 HOW SUPPLIED/STORAGE AND HANDLING

DIPROLENE AF Cream 0.05% is a white cream supplied in 15-g (NDC 0085-0517-01) and 50-g (NDC 0085-0517-04) tubes.

Store at 25°C (77°F); excursions permitted to 15-30°C (59-86°F) [see USP Controlled Room Temperature].

17 PATIENT COUNSELING INFORMATION

Advise the patient to read the FDA-approved patient labeling (Patient Information).

Inform patients of the following:

- Discontinue therapy when control is achieved, unless directed otherwise by the physician.
- Use no more than 50 grams per week.
- Avoid contact with the eyes.
- Advise patients to report any visual symptoms to their healthcare providers.
- Avoid use of DIPROLENE AF Cream on the face, underarms, or groin areas unless directed by the physician.
- Do not occlude the treatment area with bandage or other covering, unless directed by the physician.
- Note that local reactions and skin atrophy are more likely to occur with occlusive use, prolonged use or use of higher potency corticosteroids.
- Advise a woman to use DIPROLENE AF Cream on the smallest area of skin and for the shortest duration possible while pregnant or breastfeeding. Advise breastfeeding women not to apply DIPROLENE AF Cream directly to the nipple and areola to avoid direct infant exposure.

Distributed by: Merck Sharp & Dohme Corp., a subsidiary of
MERCK & CO., INC., Whitehouse Station, NJ 08889, USA

For patent information: www.merck.com/product/patent/home.html

Copyright © 1987-2020 Merck Sharp & Dohme Corp., a subsidiary of **Merck & Co., Inc.**

All rights reserved.

uspi-mk1460-cr-2006r007

Patient Information
DIPROLENE® AF (DIH-pro-leen)
(augmented betamethasone dipropionate) Cream

Important information: DIPROLENE AF Cream is for use on skin only. Do not use DIPROLENE AF Cream in your eyes, mouth, or vagina.

What is DIPROLENE AF Cream?

DIPROLENE AF Cream is a prescription corticosteroid medicine used on the skin (topical) for the relief of redness, swelling, heat, pain (inflammation) and itching, caused by certain skin problems in people 13 years of age and older.

- DIPROLENE AF Cream should not be used in children under 13 years of age.

Do not use DIPROLENE AF Cream if you are allergic to betamethasone dipropionate or any of the ingredients in DIPROLENE AF Cream. See the end of this leaflet for a complete list of ingredients in DIPROLENE AF Cream.

Before using DIPROLENE AF Cream, tell your healthcare provider about all of your medical conditions, including if you:

- have had irritation or other skin reaction to a steroid medicine in the past.
- have thinning of the skin (atrophy) at the treatment site.
- have diabetes.
- have adrenal gland problems.
- have liver problems.
- have cataracts or glaucoma.
- are pregnant or plan to become pregnant. It is not known if DIPROLENE AF Cream will harm your unborn baby. If you use DIPROLENE AF Cream during pregnancy, use DIPROLENE AF Cream on the smallest area of the skin and for the shortest time needed.
- are breastfeeding or plan to breastfeed. It is not known if DIPROLENE AF Cream passes into your breast milk. Breastfeeding women should use DIPROLENE AF Cream on the smallest area of the skin and for the shortest time needed. Do not apply DIPROLENE AF Cream directly to the nipple and areola to avoid contact with your baby.

Tell your healthcare provider about all the medicines you take, including prescription and over-the-counter medicines, vitamins, and herbal supplements.

Especially tell your healthcare provider if you take other corticosteroid medicines by mouth or injection or use other products on your skin or scalp that contain corticosteroids.

Do not use other products containing a steroid medicine with DIPROLENE AF Cream without talking to your healthcare provider first.

How should I use DIPROLENE AF Cream?

- Use DIPROLENE AF Cream exactly as your healthcare provider tells you to use it.
- Apply a thin layer (film) of DIPROLENE AF Cream to the affected skin area 1 or 2 times each day. Do not use more than 50 grams of DIPROLENE AF Cream in 1 week.
- Do not bandage, cover, or wrap the treated skin area unless your healthcare provider tells you to.
- DIPROLENE AF Cream should not be used to treat diaper rash or redness.
- Avoid using DIPROLENE AF Cream on the face, groin, or underarms (armpits) or if thinning of the skin (atrophy) is present at the treatment site.
- Wash your hands after applying DIPROLENE AF Cream unless you are using the medicine to treat your hands.

What are the possible side effects of DIPROLENE AF Cream?

DIPROLENE AF Cream may cause serious side effects, including:

- **DIPROLENE AF Cream can pass through your skin.** Too much DIPROLENE AF Cream passing through your skin can cause your adrenal glands to stop working properly. Your healthcare provider may do blood tests to check for adrenal gland problems.
- **Cushing's syndrome**, a condition that happens when your body is exposed to too much of the hormone cortisol.
- **High blood sugar** (hyperglycemia).
- **Effects on growth and weight in children.**
- **Vision problems.** Topical corticosteroids including DIPROLENE AF Cream may increase your chance of developing cataract(s) and glaucoma. Tell your healthcare provider if you develop blurred vision or other vision problems during treatment with DIPROLENE AF Cream.
- **Skin problems. Skin problems including**, allergic reactions (contact dermatitis) may happen during treatment with DIPROLENE AF Cream. Stop using DIPROLENE AF Cream and tell your healthcare provider if you develop any skin reactions or have problems with healing during treatment with DIPROLENE AF Cream.

Your healthcare provider may do certain blood tests to check for side effects.

The most common side effect of DIPROLENE AF Cream in adults includes stinging.

The most common side effects of DIPROLENE AF Cream in children include thinning of the skin (atrophy), tiny red lines or blood vessels showing under the skin (telangiectasia), bruising and shininess. These are not all of the possible side effects of DIPROLENE AF Cream.

Call your doctor for medical advice about side effects. You may report side effects to FDA at 1-800-FDA-1088.

How should I store DIPROLENE AF Cream?

- Store DIPROLENE AF Cream at room temperature between 68°F to 77°F (20°C to 25°C).
- **Keep DIPROLENE AF Cream and all medicines out of the reach of children.**

General information about the safe and effective use of DIPROLENE AF Cream.

Medicines are sometimes prescribed for purposes other than those listed in a Patient Information leaflet. Do not use DIPROLENE AF Cream for a condition for which it was not prescribed. Do not give DIPROLENE AF Cream to other people, even if they have the same symptoms that you have. It may harm them. You can ask your pharmacist or healthcare provider for information about DIPROLENE AF Cream that is written for health professionals.

What are the ingredients in DIPROLENE AF Cream?

Active ingredient: betamethasone dipropionate

Inactive ingredients: carbomer 940; cetareth-30; chlorocresol; cyclomethicone; glyceryl oleate/propylene glycol; propylene glycol; purified water; sodium hydroxide; sorbitol solution; white petrolatum; and white wax.

Distributed by: Merck Sharp & Dohme Corp., a subsidiary of **MERCK & CO., INC.**, Whitehouse Station, NJ 08889, USA

For patent information: www.merck.com/product/patent/home.html

Copyright © 1987-2019 Merck Sharp & Dohme Corp., a subsidiary of **Merck & Co., Inc.**

All rights reserved.

usppi-mk1460-cr-1905r000

This Patient Information has been approved by the U.S. Food and Drug Administration.

Revised: 05/2019

PRINCIPAL DISPLAY PANEL - 15 g Tube Box

NDC 0085-0517-01

15 g

Diprolene[®] AF

(augmented
betamethasone
dipropionate)

Cream, 0.05%*

*Strength expressed
as betamethasone

**For topical
use only.**

Not for oral,
ophthalmic, or
intravaginal use.

Rx only

15g *Diprolene*[®] AF
(augmented betamethasone dipropionate)
Cr. em., 0.05%

Usual Dose:

See Prescribing Information.

Each gram contains:

0.643 mg betamethasone dipropionate USP (equivalent to 0.5 mg betamethasone) in a white cream base of carbomer 940; cetareth-30; chlorocresol; cyclomethicone; glyceryl oleate/propylene glycol; propylene glycol; purified water; sodium hydroxide; sorbitol solution; white petrolatum; and white wax.

Store at 25°C (77°F); excursions permitted to 15-30°C (59-86°F) [see USP Controlled Room Temperature].

81-116846

Manuf. for:
Merck Sharp & Dohme Corp.,
a subsidiary of
 **MERCK & CO., INC.**
Whitehouse Station, NJ 08889, USA

Manuf. by:
Bayer Inc.
Pointe Claire, Quebec H9R 1B4,
Canada

Betamethasone Dipropionate
(active ingred.) Made in Singapore.
Formulated in Canada.

Copyright © 1987, 2013
Merck Sharp & Dohme Corp.,
a subsidiary of **Merck & Co., Inc.**
All rights reserved.

15g *Diprolene*[®] AF
(augmented betamethasone dipropionate)
Cream, 0.05%



NDC 0085-0517-01

15 g

***Diprolene*[®] AF**
(augmented
betamethasone
dipropionate)

Cream, 0.05%*

*Strength expressed
as betamethasone

**For topical
use only.**

Not for oral,
ophthalmic, or
intravaginal use.

Rx only



DIPROLENE AF

betamethasone dipropionate cream

Product Information

Product Type	HUMAN PRESCRIPTION DRUG	Item Code (Source)	NDC:0085-0517
Route of Administration	TOPICAL		

Active Ingredient/Active Moiety

Ingredient Name	Basis of Strength	Strength
betamethasone dipropionate (UNII: 826Y60901U) (betamethasone - UNII:9842X06Q6M)	betamethasone	0.5 mg in 1 g

Inactive Ingredients

Ingredient Name	Strength
water (UNII: 059QF0K00R)	
chlorocresol (UNII: 36W5307109)	
propylene glycol (UNII: 6DC9Q167V3)	
petrolatum (UNII: 4T6H12BN9U)	
white wax (UNII: 7G1J5DA97F)	
cyclomethicone (UNII: NMQ347994Z)	
sorbitol (UNII: 506T60A25R)	
glyceryl oleate (UNII: 4PC054V79P)	
ceteareth-30 (UNII: 1R9DCZ5FOX)	
carbomer homopolymer type c (allyl pentaerythritol crosslinked) (UNII: 4Q93RCW27E)	
sodium hydroxide (UNII: 55X04QC32I)	

Packaging

#	Item Code	Package Description	Marketing Start Date	Marketing End Date
1	NDC:0085-0517-01	1 in 1 BOX	04/27/1987	
1		15 g in 1 TUBE; Type 0: Not a Combination Product		
2	NDC:0085-0517-04	1 in 1 BOX	04/27/1987	
2		50 g in 1 TUBE; Type 0: Not a Combination Product		

Marketing Information

Marketing Category	Application Number or Monograph Citation	Marketing Start Date	Marketing End Date
NDA	NDA019555	04/27/1987	

Labeler - Merck Sharp & Dohme Corp. (001317601)