

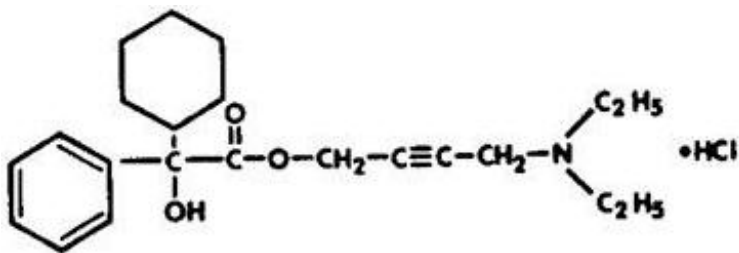
OXYBUTYNIN CHLORIDE - oxybutynin chloride tablet, extended release
Physicians Total Care, Inc.

DESCRIPTION

Oxybutynin chloride is an antispasmodic, anticholinergic agent. Each Oxybutynin Chloride Extended Release Tablet contains 15 mg of oxybutynin chloride USP, formulated as a once-a-day controlled-release tablet for oral administration. Oxybutynin chloride is administered as a racemate of R- and S-enantiomers.

Chemically, oxybutynin chloride is d,l (racemic) 4-diethylamino-2-butynyl phenylcyclohexylglycolate hydrochloride. The empirical formula of oxybutynin chloride is $C_{22}H_{31}NO_3 \cdot HCl$.

Its structural formula is:



Oxybutynin chloride is a white crystalline solid with a molecular weight of 393.9. It is readily soluble in water and acids, but relatively insoluble in alkalis.

Oxybutynin Chloride Extended Release Tablets also contain the following inert ingredients: cellulose acetate, hypromellose, lactose, magnesium stearate, polyethylene glycol, polyethylene oxide, synthetic iron oxides, titanium dioxide, polysorbate 80, sodium chloride, and butylated hydroxytoluene.

System Components and Performance

Oxybutynin Chloride Extended Release Tablets use osmotic pressure to deliver oxybutynin chloride at a controlled rate over approximately 24 hours. The system, which resembles a conventional tablet in appearance, comprises an osmotically active bilayer core surrounded by a semipermeable membrane. The bilayer core is composed of a drug layer containing the drug and excipients, and a push layer containing osmotically active components. There is a precision-laser drilled orifice in the semipermeable membrane on the drug-layer side of the tablet. In an aqueous environment, such as the gastrointestinal tract, water permeates through the membrane into the tablet core, causing the drug to go into suspension and the push layer to expand. This expansion pushes the suspended drug out through the orifice. The semipermeable membrane controls the rate at which water permeates into the tablet core, which in turn controls the rate of drug delivery. The controlled rate of drug delivery into the gastrointestinal lumen is thus independent of pH or gastrointestinal motility. The function of Oxybutynin Chloride Extended Release Tablets depends on the existence of an osmotic gradient between the contents of the bilayer core and the fluid in the gastrointestinal tract. Since the osmotic gradient remains constant, drug delivery remains essentially constant. The biologically inert components of the tablet remain intact during gastrointestinal transit and are eliminated in the feces as an insoluble shell.

CLINICAL PHARMACOLOGY

Oxybutynin chloride exerts a direct antispasmodic effect on smooth muscle and inhibits the muscarinic action of acetylcholine on smooth muscle. Oxybutynin chloride exhibits only one-fifth of the

anticholinergic activity of atropine on the rabbit detrusor muscle, but four to ten times the antispasmodic activity. No blocking effects occur at skeletal neuromuscular junctions or autonomic ganglia (antinicotinic effects).

Oxybutynin chloride relaxes bladder smooth muscle. In patients with conditions characterized by involuntary bladder contractions, cystometric studies have demonstrated that oxybutynin increases bladder (vesical) capacity, diminishes the frequency of uninhibited contractions of the detrusor muscle, and delays the initial desire to void. Oxybutynin thus decreases urgency and the frequency of both incontinent episodes and voluntary urination.

Antimuscarinic activity resides predominantly in the R-isomer. A metabolite, desethyloxybutynin, has pharmacological activity similar to that of oxybutynin in *in vitro* studies.

Pharmacokinetics Absorption

Following the first dose of Oxybutynin Chloride Extended Release Tablets, oxybutynin plasma concentrations rise for 4 to 6 hours; thereafter steady concentrations are maintained for up to 24 hours, minimizing fluctuations between peak and trough concentrations associated with oxybutynin.

The relative bioavailabilities of R- and S-oxybutynin from Oxybutynin Chloride Extended Release Tablets are 156% and 187%, respectively, compared with oxybutynin. The mean pharmacokinetic parameters for R- and S-oxybutynin are summarized in Table 1. The plasma concentration-time profiles for R- and S-oxybutynin are similar in shape; Figure 1 shows the profile for R-oxybutynin.

Table 1 Mean (SD) R- and S-Oxybutynin Pharmacokinetic Parameters Following a Single Dose of Oxybutynin Chloride Extended Release Tablets 10 mg (n=43)

Parameters (units)	R-Oxybutynin		S-Oxybutynin	
C _{max} (ng/mL)	1.0	(0.6)	1.8	(1.0)
T _{max} (h)	12.7	(5.4)	11.8	(5.3)
t _{1/2} (h)	13.2	(6.2)	12.4	(6.1)
AUC ₍₀₋₄₈₎ (ng·h/mL)	18.4	(10.3)	34.2	(16.9)
AUC _{inf} (ng·h/mL)	21.3	(12.2)	39.5	(21.2)

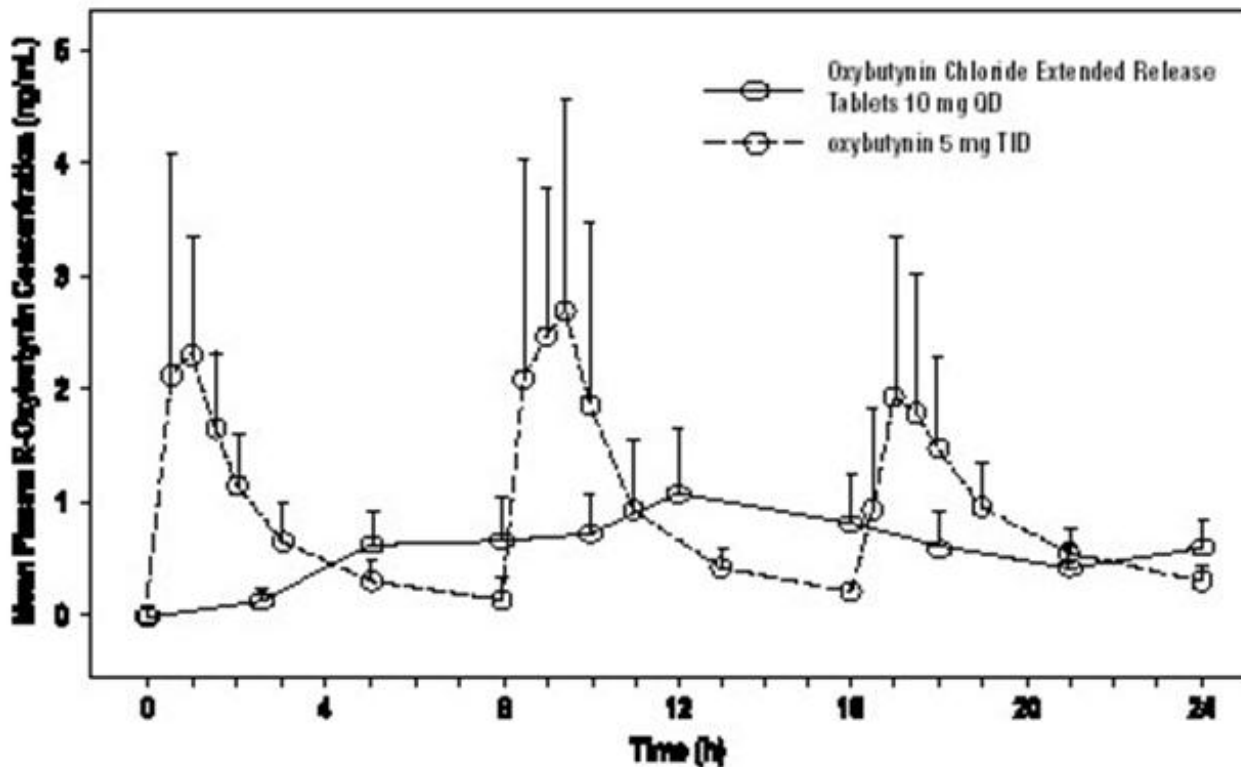


Figure 1. Mean R-oxybutynin plasma concentrations following a single dose of Oxybutynin Chloride Extended Release Tablets 10 mg and oxybutynin 5 mg administered every 8 hours (n=23 for each treatment).

Steady state oxybutynin plasma concentrations are achieved by Day 3 of repeated Oxybutynin Chloride Extended Release Tablets dosing, with no observed drug accumulation or change in oxybutynin and desethyloxybutynin pharmacokinetic parameters.

Oxybutynin Chloride Extended Release Tablets steady state pharmacokinetics was studied in 19 children aged 5–15 years with detrusor overactivity associated with a neurological condition (e.g. spina bifida). The children were on Oxybutynin Chloride Extended Release Tablets total daily dose ranging from 5 to 20 mg (0.10 to 0.77 mg/kg). Sparse sampling technique was used to obtain serum samples. When all available data are normalized to an equivalent of 5 mg per day Oxybutynin Chloride Extended Release Tablets, the mean pharmacokinetic parameters derived for R- and S-oxybutynin and R- and S-desethyloxybutynin are summarized in Table 2. The plasma-time concentration profiles for R- and S-oxybutynin are similar in shape; Figure 2 shows the profile for R-oxybutynin when all available data are normalized to an equivalent of 5 mg per day.

Table 2 Mean ± SD R- and S-Oxybutynin and R- and S-Desethyloxybutynin Pharmacokinetic Parameters in Children Aged 5–15 Following Administration of 5 to 20 mg Oxybutynin Chloride Extended Release Tablets Once Daily (n=19) All Available Data Normalized to an Equivalent of Oxybutynin Chloride Extended Release Tablets 5 mg Once Daily

	R-Oxybutynin	S-Oxybutynin	R-Desethyloxybutynin	S-Desethyloxybutynin
C _{max} (ng/mL)	0.7 ± 0.4	1.3 ± 0.8	7.8 ± 3.7	4.2 ± 2.3
T _{max} (hr)	5.0	5.0	5.0	5.0
AUC (ng·hr/mL)	12.8 ± 7.0	23.7 ± 14.4	125.1 ± 66.7	73.6 ± 47.7

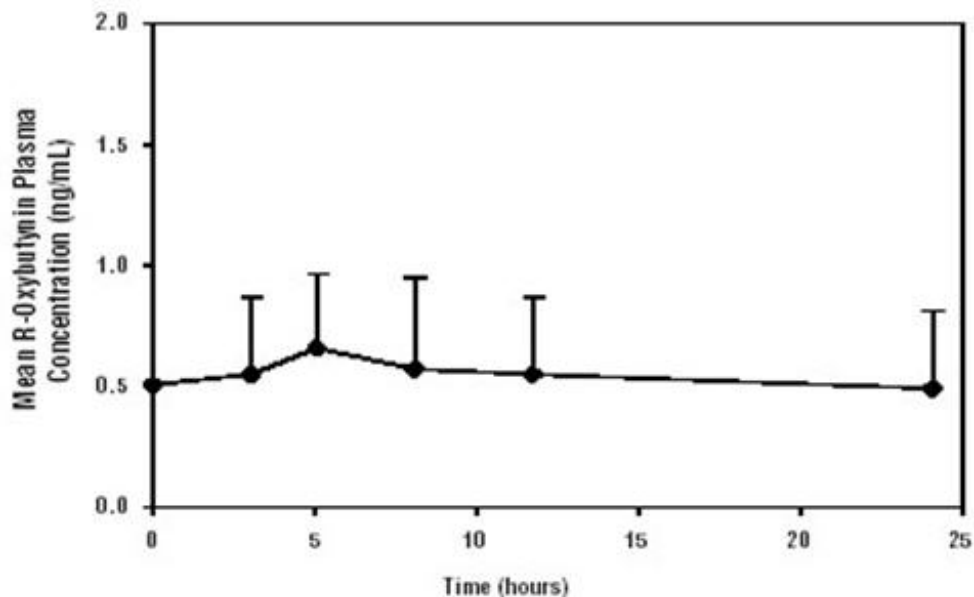


Figure 2. Mean steady state (\pm SD) R-oxybutynin plasma concentrations following administration of 5 to 20 mg Oxybutynin Chloride Extended Release Tablets once daily in children aged 5–15. Plot represents all available data normalized to an equivalent of Oxybutynin Chloride Extended Release Tablets 5 mg once daily.

Food Effects

The rate and extent of absorption and metabolism of oxybutynin are similar under fed and fasted conditions.

Distribution

Plasma concentrations of oxybutynin decline biexponentially following intravenous or oral administration. The volume of distribution is 193 L after intravenous administration of 5 mg oxybutynin chloride.

Metabolism

Oxybutynin is metabolized primarily by the cytochrome P450 enzyme systems, particularly CYP3A4 found mostly in the liver and gut wall. Its metabolic products include phenylcyclohexylglycolic acid, which is pharmacologically inactive, and desethyloxybutynin, which is pharmacologically active. Following Oxybutynin Chloride Extended Release Tablet administration, plasma concentrations of R- and S-desethyloxybutynin are 73% and 92%, respectively, of concentrations observed with oxybutynin.

Excretion

Oxybutynin is extensively metabolized by the liver, with less than 0.1% of the administered dose excreted unchanged in the urine. Also, less than 0.1% of the administered dose is excreted as the metabolite desethyloxybutynin.

Dose Proportionality

Pharmacokinetic parameters of oxybutynin and desethyloxybutynin (C_{max} and AUC) following administration of 5–20 mg of Oxybutynin Chloride Extended Release Tablets are dose proportional.

Special Populations Geriatric

The pharmacokinetics of Oxybutynin Chloride Extended Release Tablets were similar in all patients studied (up to 78 years of age).

Pediatric

The pharmacokinetics of Oxybutynin Chloride Extended Release Tablets were evaluated in 19 children

aged 5–15 years with detrusor overactivity associated with a neurological condition (e.g., spina bifida). The pharmacokinetics of Oxybutynin Chloride Extended Release Tablets in these pediatric patients were consistent with those reported for adults (see Tables 1 and 2 , and Figures 1 and 2 above).

Gender

There are no significant differences in the pharmacokinetics of oxybutynin in healthy male and female volunteers following administration of Oxybutynin Chloride Extended Release Tablets.

Race

Available data suggest that there are no significant differences in the pharmacokinetics of oxybutynin based on race in healthy volunteers following administration of Oxybutynin Chloride Extended Release Tablets.

Renal Insufficiency

There is no experience with the use of Oxybutynin Chloride Extended Release Tablets in patients with renal insufficiency.

Hepatic Insufficiency

There is no experience with the use of Oxybutynin Chloride Extended Release Tablets in patients with hepatic insufficiency.

Drug-Drug Interactions

See **PRECAUTIONS: Drug Interactions** .

CLINICAL STUDIES

Oxybutynin Chloride Extended Release Tablets were evaluated for the treatment of patients with overactive bladder with symptoms of urge urinary incontinence, urgency, and frequency in three controlled studies and one open label study. The majority of patients were Caucasian (89.0%) and female (91.9%) with a mean age of 59 years (range, 18 to 98 years). Entry criteria required that patients have urge or mixed incontinence (with a predominance of urge) as evidenced by ≥ 6 urge incontinence episodes per week and ≥ 10 micturitions per day. Study 1 was a fixed dose escalation design, whereas the other studies used a dose adjustment design in which each patient's final dose was adjusted to a balance between improvement of incontinence symptoms and tolerability of side effects. Controlled studies included patients known to be responsive to oxybutynin or other anticholinergic medications, and these patients were maintained on a final dose for up to 2 weeks.

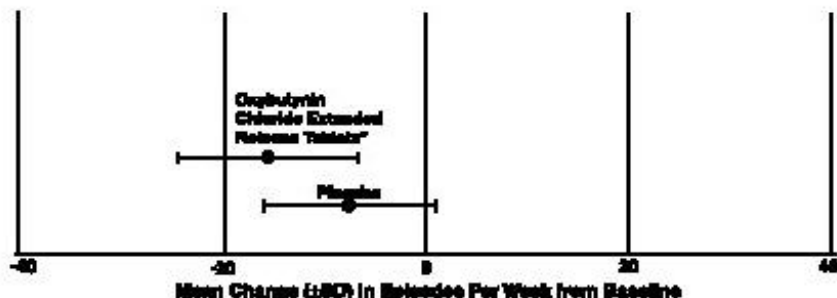
The efficacy results for the three controlled trials are presented in the following tables and figures.

Number of Urge Urinary Incontinence Episodes Per Week

Study 1	n	Oxybutynin Chloride Extended Release Tablets	n	Placebo
Mean Baseline	34	15.9	16	20.9
Mean (SD) Change from Baseline†	34	-15.8 (8.9)	16	-7.6 (8.6)
95% Confidence Interval for Difference (Oxybutynin Chloride Extended Release Tablets – Placebo)				(-13.6, -2.8)*

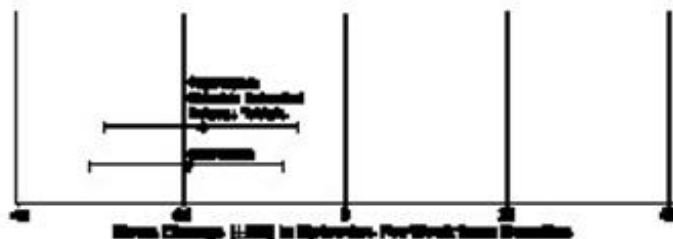
*The difference between Oxybutynin Chloride Extended Release Tablets and placebo was statistically significant.

† Covariate adjusted mean with missing observations set to baseline values.



Study 2	n	Oxybutynin Chloride Extended Release Tablets	n	oxybutynin
Mean Baseline	53	27.8	52	23.0
Mean (SD) Change from Baseline†	53	-17.6 (11.9)	52	-19.4 (11.9)
95% Confidence Interval for Difference (Oxybutynin Chloride Extended Release Tablets – oxybutynin)				(-2.8, 6.5)

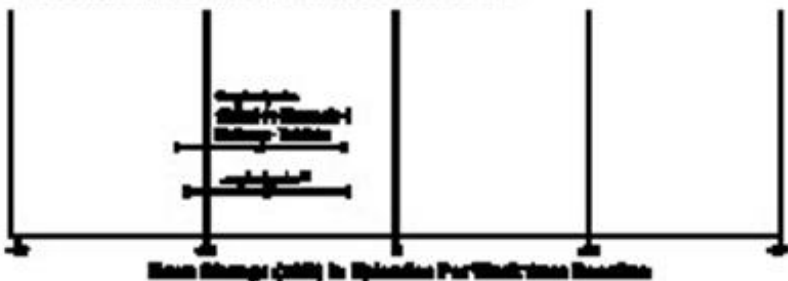
† Covariate adjusted mean with missing observations set to baseline values.



Study 3	n	Oxybutynin Chloride Extended Release Tablets	n	Oxybutynin
Mean Baseline	111	18.9	115	19.5
Mean (SD) Change from Baseline [†]	111	-14.5 (8.7)	115	-13.8 (8.6)
95% Confidence Interval for Difference (Oxybutynin Chloride Extended Release Tablets - oxybutynin)				(-3.0, 1.6)**

** The difference between Oxybutynin Chloride Extended Release Tablets and oxybutynin stabilized the criteria for non-inferiority.

[†] Considered adjusted mean with missing observations set to baseline values.



INDICATIONS AND USAGE

Oxybutynin Chloride Extended Release Tablets are a once-daily controlled-release tablet indicated for the treatment of overactive bladder with symptoms of urge urinary incontinence, urgency, and frequency.

Oxybutynin Chloride Extended Release Tablets are also indicated in the treatment of pediatric patients aged 6 years and older with symptoms of detrusor overactivity associated with a neurological condition (e.g., spina bifida).

CONTRAINDICATIONS

Oxybutynin Chloride Extended Release Tablets are contraindicated in patients with urinary retention, gastric retention and other severe decreased gastrointestinal motility conditions, uncontrolled narrow-angle glaucoma and in patients who are at risk for these conditions.

Oxybutynin Chloride Extended Release Tablets are also contraindicated in patients who have demonstrated hypersensitivity to the drug substance or other components of the product.

PRECAUTIONS

Central Nervous System Effects

Oxybutynin is associated with anticholinergic central nervous system (CNS) effects (See **ADVERSE REACTIONS**). A variety of CNS anticholinergic effects have been reported, including hallucinations, agitation, confusion and somnolence. Patients should be monitored for signs of anticholinergic CNS effects, particularly in the first few months after beginning treatment or increasing the dose. If a patient experiences anticholinergic CNS effects, dose reduction or drug discontinuation should be considered.

Oxybutynin Chloride Extended Release Tablets should be used with caution in patients with preexisting dementia treated with cholinesterase inhibitors due to the risk of aggravation of symptoms.

General

Oxybutynin Chloride Extended Release Tablets should be used with caution in patients with hepatic or renal impairment and in patients with myasthenia gravis due to the risk of symptom aggravation.

Urinary Retention

Oxybutynin Chloride Extended Release Tablets should be administered with caution to patients with clinically significant bladder outflow obstruction because of the risk of urinary retention (see

CONTRAINDICATIONS).

Gastrointestinal Disorders

Oxybutynin Chloride Extended Release Tablets should be administered with caution to patients with gastrointestinal obstructive disorders because of the risk of gastric retention (see

CONTRAINDICATIONS).

Oxybutynin Chloride Extended Release Tablets, like other anticholinergic drugs, may decrease gastrointestinal motility and should be used with caution in patients with conditions such as ulcerative colitis and intestinal atony.

Oxybutynin Chloride Extended Release Tablets should be used with caution in patients who have gastroesophageal reflux and/or who are concurrently taking drugs (such as bisphosphonates) that can cause or exacerbate esophagitis.

As with any other nondeformable material, caution should be used when administering Oxybutynin Chloride Extended Release Tablets to patients with preexisting severe gastrointestinal narrowing (pathologic or iatrogenic). There have been rare reports of obstructive symptoms in patients with known strictures in association with the ingestion of other drugs in nondeformable controlled-release formulations.

Information for Patients

Patients should be informed that heat prostration (fever and heat stroke due to decreased sweating) can occur when anticholinergics such as oxybutynin chloride are administered in the presence of high environmental temperature.

Because anticholinergic agents such as oxybutynin may produce drowsiness (somnolence) or blurred vision, patients should be advised to exercise caution.

Patients should be informed that alcohol may enhance the drowsiness caused by anticholinergic agents such as oxybutynin.

Patients should be informed that Oxybutynin Chloride Extended Release Tablets should be swallowed whole with the aid of liquids. Patients should not chew, divide, or crush tablets. The medication is contained within a nonabsorbable shell designed to release the drug at a controlled rate. The tablet shell is eliminated from the body; patients should not be concerned if they occasionally notice in their stool something that looks like a tablet.

Oxybutynin Chloride Extended Release Tablets should be taken at approximately the same time each day.

Drug Interactions

The concomitant use of oxybutynin with other anticholinergic drugs or with other agents which produce dry mouth, constipation, somnolence (drowsiness), and/or other anticholinergic-like effects may increase the frequency and/or severity of such effects.

Anticholinergic agents may potentially alter the absorption of some concomitantly administered drugs due to anticholinergic effects on gastrointestinal motility. This may be of concern for drugs with a narrow therapeutic index.

Mean oxybutynin chloride plasma concentrations were approximately 2 fold higher when Oxybutynin Chloride Extended Release Tablets were administered with ketoconazole, a potent CYP3A4 inhibitor. Other inhibitors of the cytochrome P450 3A4 enzyme system, such as antimycotic agents (e.g., itraconazole and miconazole) or macrolide antibiotics (e.g., erythromycin and clarithromycin), may alter oxybutynin mean pharmacokinetic parameters (i.e., C_{max} and AUC). The clinical relevance of such potential interactions is not known. Caution should be used when such drugs are co-administered.

Carcinogenesis, Mutagenesis, Impairment of Fertility

A 24-month study in rats at dosages of oxybutynin chloride of 20, 80, and 160 mg/kg/day showed no evidence of carcinogenicity. These doses are approximately 6, 25, and 50 times the maximum human exposure, based on surface area.

Oxybutynin chloride showed no increase of mutagenic activity when tested in *Schizosaccharomyces pompholiciformis*, *Saccharomyces cerevisiae*, and *Salmonella typhimurium* test systems.

Reproduction studies with oxybutynin chloride in the mouse, rat, hamster, and rabbit showed no definite evidence of impaired fertility.

Pregnancy Teratogenic Effects Pregnancy Category B

Reproduction studies with oxybutynin chloride in the mouse, rat, hamster, and rabbit showed no definite evidence of impaired fertility or harm to the animal fetus. The safety of Oxybutynin Chloride Extended Release Tablet administration to women who are or who may become pregnant has not been established. Therefore, Oxybutynin Chloride Extended Release Tablets should not be given to pregnant women unless, in the judgment of the physician, the probable clinical benefits outweigh the possible hazards.

Nursing Mothers

It is not known whether oxybutynin is excreted in human milk. Because many drugs are excreted in human milk, caution should be exercised when Oxybutynin Chloride Extended Release Tablets are administered to a nursing woman.

Pediatric Use

The safety and efficacy of Oxybutynin Chloride Extended Release Tablets were studied in 60 children in a 24-week, open-label trial. Patients were aged 6–15 years, all had symptoms of detrusor overactivity in association with a neurological condition (e.g., spina bifida), all used clean intermittent catheterization, and all were current users of oxybutynin chloride. Study results demonstrated that administration of Oxybutynin Chloride Extended Release Tablets 5 to 20 mg/day was associated with an increase from baseline in mean urine volume per catheterization from 108 mL to 136 mL, an increase from baseline in mean urine volume after morning awakening from 148 mL to 189 mL, and an increase from baseline in the mean percentage of catheterizations without a leaking episode from 34% to 51%.

Urodynamic results were consistent with clinical results. Administration of Oxybutynin Chloride Extended Release Tablets resulted in an increase from baseline in mean maximum cystometric capacity from 185 mL to 254 mL, a decrease from baseline in mean detrusor pressure at maximum cystometric capacity from 44 cm H₂O to 33 cm H₂O, and a reduction in the percentage of patients demonstrating uninhibited detrusor contractions (of at least 15 cm H₂O) from 60% to 28%.

Oxybutynin Chloride Extended Release Tablets are not recommended in pediatric patients who can not swallow the tablet whole without chewing, dividing, or crushing, or in children under the age of 6 (See **DOSAGE AND ADMINISTRATION**).

Geriatric Use

The rate and severity of anticholinergic effects reported by patients less than 65 years old and those 65 years and older were similar (see **CLINICAL PHARMACOLOGY, Pharmacokinetics, Special Populations: Geriatric**).

ADVERSE REACTIONS

Adverse Events with Oxybutynin Chloride Extended Release Tablets

The safety and efficacy of Oxybutynin Chloride Extended Release Tablets was evaluated in a total of 580 participants who received Oxybutynin Chloride Extended Release Tablets in 4 clinical trials (429 patients) and four pharmacokinetic studies (151 healthy volunteers). The 429 patients were treated with 5–30 mg/day for up to 4.5 months. Three of the 4 clinical trials allowed dose adjustments based on efficacy and adverse events and one was a fixed dose escalation design. Safety information is provided for 429 patients from these three controlled clinical studies and one open label study in the first column of Table 3 below.

Adverse events from two additional fixed dose, active controlled, 12 week treatment duration, postmarketing studies, in which 576 patients were treated with Oxybutynin Chloride Extended Release Tablets 10 mg/day, are also listed in Table 3 (second column). The adverse events are reported regardless of causality.

Table 3 Incidence (%) of Adverse Events Reported by \geq 5% of Patients Using Oxybutynin Chloride Extended Release Tablets (5–30 mg/day) and % of Corresponding Adverse Events in Two Fixed Dose (10mg/day) Studies

Body System	Adverse Event	Oxybutynin Chloride	Oxybutynin Chloride
		Extended Release Tablets 5-30 mg/day (n=429)	Extended Release Tablets 10 mg/day (n=576)
General	headache	10	6
	asthenia	7	3
	pain	7	4
Digestive	dry mouth	61	29
	constipation	13	7
	diarrhea	9	7
	nausea	9	2
	dyspepsia	7	5
	somnolence	12	2
Nervous	dizziness	6	4
	rhinitis	6	2
Respiratory			
Special senses	blurred vision	8	1
	dry eyes	6	3
Urogenital	urinary tract infection	5	5

The most common adverse events reported by the 429 patients receiving 5–30 mg/day Oxybutynin Chloride Extended Release Tablets were the expected side effects of anticholinergic agents. The incidence of dry mouth was dose-related.

The discontinuation rate for all adverse events was 6.8% in the 429 patients from the 4 studies of efficacy and safety who received 5–30 mg/day. The most frequent adverse event causing early discontinuation of study medication was nausea (1.9%), while discontinuation due to dry mouth was 1.2%.

In addition, the following adverse events were reported by greater than or equal to 1 to less than 5% of all patients who received Oxybutynin Chloride Extended Release Tablets in the 6 adjustable and fixed dose efficacy and safety studies. *Infections and infestations*: nasopharyngitis, upper respiratory tract infection, sinusitis, bronchitis, cystitis; *Psychiatric disorders*: insomnia, depression, nervousness, confusional state; *Nervous System Disorders*: dysgeusia; *Cardiac disorders*: palpitations; *Vascular disorders*: hypertension; *Respiratory, thoracic and mediastinal disorders*: nasal dryness, cough, pharyngolaryngeal pain, dry throat; *Gastrointestinal Disorders*: gastroesophageal reflux disease, abdominal pain, loose stools, flatulence, vomiting; *Skin and subcutaneous tissue disorders*: dry skin, pruritis; *Musculoskeletal and connective tissue disorders*: back pain, arthralgia, pain in extremity; *Renal and urinary disorders*: urinary retention, urinary hesitation, dysuria; *General disorders and administration site conditions*: fatigue, edema peripheral, asthenia, chest pain; *Investigations*: blood pressure increased.

Postmarketing Surveillance

Because postmarketing reactions are reported voluntarily from a population of uncertain size, it is not always possible to reliably estimate their frequency or establish a causal relationship to drug exposure. The following additional adverse drug reactions have been reported from worldwide postmarketing experience with Oxybutynin Chloride Extended Release Tablets: *Psychiatric Disorders*: psychotic disorder, agitation, hallucinations, memory impairment; *Nervous System Disorders*: convulsions; *Cardiac Disorders*: arrhythmia; tachycardia, QT interval prolongation; *Vascular Disorders*: flushing; *Skin and Subcutaneous Tissue Disorders*: rash; *Renal and Urinary Disorders*: impotence; *Injury, poisoning and procedural complications*: fall.

Additional adverse events reported with some other oxybutynin chloride formulations include: cycloplegia, mydriasis, and suppression of lactation.

OVERDOSAGE

The continuous release of oxybutynin from Oxybutynin Chloride Extended Release Tablets should be considered in the treatment of overdosage. Patients should be monitored for at least 24 hours. Treatment should be symptomatic and supportive. Activated charcoal as well as a cathartic may be administered.

Overdosage with oxybutynin chloride has been associated with anticholinergic effects including central nervous system excitation, flushing, fever, dehydration, cardiac arrhythmia, vomiting, and urinary retention.

Ingestion of 100 mg oxybutynin chloride in association with alcohol has been reported in a 13-year-old boy who experienced memory loss, and a 34-year-old woman who developed stupor, followed by disorientation and agitation on awakening, dilated pupils, dry skin, cardiac arrhythmia, and retention of urine. Both patients fully recovered with symptomatic treatment.

DOSAGE AND ADMINISTRATION

Oxybutynin Chloride Extended Release Tablets must be swallowed whole with the aid of liquids, and must not be chewed, divided, or crushed.

Oxybutynin Chloride Extended Release Tablets may be administered with or without food.

Adults

The recommended starting dose of Oxybutynin Chloride Extended Release Tablets is 5 or 10 mg once daily at approximately the same time each day. Dosage may be adjusted in 5-mg increments to achieve a balance of efficacy and tolerability (up to a maximum of 30 mg/day). In general, dosage adjustment may proceed at approximately weekly intervals.

Pediatric Patients Aged 6 Years of Age and Older

The recommended starting dose of Oxybutynin Chloride Extended Release Tablets is 5 mg once daily at approximately the same time each day. Dosage may be adjusted in 5-mg increments to achieve a balance of efficacy and tolerability (up to a maximum of 20 mg/day).

HOW SUPPLIED

Oxybutynin Chloride Extended Release Tablets are available containing 15 mg of oxybutynin chloride, USP. The 15 mg round, gray, tablets are imprinted on one side with M over O 17. The 15 mg Oxybutynin Chloride Extended Release Tablets are supplied in:

bottles of 10 tablets	NDC 54868-5743-1
bottles of 30 tablets	NDC 54868-5743-0
bottles of 90 tablets	NDC 54868-5743-2
bottles of 180 tablets	NDC 54868-5743-3

Storage

Store at 25°C (77°F); excursions permitted to 15–30°C (59–86°F) [see USP Controlled Room Temperature]. Protect from moisture and humidity.

Manufactured by
ALZA Corporation, Vacaville, CA 95688

Placeholder for ALZA Corporation Logo

An ALZA OROS[®]
Technology Product

OROS[®] is a registered trademark of ALZA Corporation.

Manufactured for:
Mylan Pharmaceuticals Inc.
Morgantown, WV 26505

Placeholder for Mylan Pharmaceuticals Inc. Logo

10151902

Revised July 2009

PRINCIPAL DISPLAY PANEL

OXYBUTYNIN CHLORIDE EXTENDED-RELEASE TABLETS 15 mg



OXYBUTYNIN CHLORIDE

oxybutynin chloride tablet, extended release

Product Information

Product Type	HUMAN PRESCRIPTION DRUG	Item Code (Source)	NDC:54868-5743(NDC:0378-6015)
Route of Administration	ORAL		

Active Ingredient/Active Moiety

Ingredient Name	Basis of Strength	Strength
OXYBUTYNIN CHLORIDE (UNII: L9F3D9RENQ) (OXYBUTYNIN - UNII:K9P6MC7092)	OXYBUTYNIN CHLORIDE	15 mg

Inactive Ingredients

Ingredient Name	Strength
HYPROMELLOSE (UNII: 3NXW29V3WO)	
LACTOSE (UNII: J2B2A4N98G)	
MAGNESIUM STEARATE (UNII: 70097M6I30)	
POLYETHYLENE GLYCOL (UNII: 3WJQ0SDW1A)	
TITANIUM DIOXIDE (UNII: 15FIX9V2JP)	
POLYSORBATE 80 (UNII: 6OZP39ZG8H)	
SODIUM CHLORIDE (UNII: 451W47IQ8X)	
BUTYLATED HYDROXYTOLUENE (UNII: 1P9D0Z171K)	

Product Characteristics

Color	gray	Score	no score
Shape	ROUND	Size	8mm
Flavor		Imprint Code	M;O;17
Contains			

Packaging

#	Item Code	Package Description	Marketing Start Date	Marketing End Date
1	NDC:54868-5743-0	30 in 1 BOTTLE		
2	NDC:54868-5743-1	10 in 1 BOTTLE		
3	NDC:54868-5743-2	90 in 1 BOTTLE		
4	NDC:54868-5743-3	180 in 1 BOTTLE		

Marketing Information

Marketing Category	Application Number or Monograph Citation	Marketing Start Date	Marketing End Date
ANDA	ANDA078293	01/13/2010	

Labeler - Physicians Total Care, Inc. (194123980)

Establishment

Name	Address	ID/FEI	Business Operations
Physicians Total Care, Inc.		194123980	repack, relabel