

DEXTROAMPHETAMINE SACCHARATE, AMPHETAMINE ASPARTATE MONOHYDRATE, DEXTROAMPHETAMINE SULFATE AND AMPHETAMINE SULFATE- dextroamphetamine sulfate, dextroamphetamine saccharate, amphetamine sulfate and amphetamine aspartate capsule, extended release Golden State Medical Supply, Inc.

HIGHLIGHTS OF PRESCRIBING INFORMATION

DEXTROAMPHETAMINE SACCHARATE, AMPHETAMINE ASPARTATE MONOHYDRATE, DEXTROAMPHETAMINE SULFATE and AMPHETAMINE SULFATE EXTENDED-RELEASE CAPSULES. These highlights do not include all the information needed to use **DEXTROAMPHETAMINE SACCHARATE, AMPHETAMINE ASPARTATE MONOHYDRATE, DEXTROAMPHETAMINE SULFATE and AMPHETAMINE SULFATE EXTENDED-RELEASE CAPSULES** safely and effectively. See full prescribing information for **DEXTROAMPHETAMINE SACCHARATE, AMPHETAMINE ASPARTATE MONOHYDRATE, DEXTROAMPHETAMINE SULFATE and AMPHETAMINE SULFATE EXTENDED-RELEASE CAPSULES.**

DEXTROAMPHETAMINE SACCHARATE, AMPHETAMINE ASPARTATE MONOHYDRATE, DEXTROAMPHETAMINE SULFATE and AMPHETAMINE SULFATE (mixed salts of a single-entity amphetamine product) extended-release capsules, for oral use, CII
Initial U.S. Approval: 2001

WARNING: ABUSE, MISUSE, AND ADDICTION

See full prescribing information for complete boxed warning.

Dextroamphetamine saccharate, amphetamine aspartate monohydrate, dextroamphetamine sulfate and amphetamine sulfate extended-release capsules has a high potential for abuse and misuse, which can lead to the development of a substance use disorder, including addiction. Misuse and abuse of CNS stimulants, including dextroamphetamine saccharate, amphetamine aspartate monohydrate, dextroamphetamine sulfate and amphetamine sulfate extended-release capsules, can result in overdose and death(5.1,9.2,10):

- **Before prescribing dextroamphetamine saccharate, amphetamine aspartate monohydrate, dextroamphetamine sulfate and amphetamine sulfate extended-release capsules, assess each patient's risk for abuse, misuse, and addiction.**
- **Educate patients and their families about these risks, proper storage of the drug, and proper disposal of any unused drug.**
- **Throughout treatment, reassess each patient's risk and frequently monitor for signs and symptoms of abuse, misuse, and addiction.**

RECENT MAJOR CHANGES

Boxed Warning	10/2023
Indications and Usage (1)	10/2023
Dosage and Administration (2.1, 2.2, 2.7)	10/2023
Contraindications (4)	10/2023
Warnings and Precautions (5.1, 5.2, 5.3, 5.4, 5.5, 5.7, 5.9)	10/2023

INDICATIONS AND USAGE

Dextroamphetamine saccharate, amphetamine aspartate monohydrate, dextroamphetamine sulfate and amphetamine sulfate extended-release capsules, a CNS stimulant, are indicated for the treatment of attention deficit hyperactivity disorder (ADHD) in adults and pediatric patients 6 years and older. (1)

DOSAGE AND ADMINISTRATION

- Pediatric patients (ages 6 to 17): 10 mg once daily in the morning. Maximum dose for children 6 to 12 years of age is 30 mg once daily. (2.2, 2.3, 2.4)
- Adults: 20 mg once daily in the morning. (2.5)
- Pediatric patients (ages 6 to 17) with severe renal impairment: 5 mg once daily in the morning. Maximum dose for children 6 to 12 years of age with severe renal impairment is 20 mg once daily. (2.6, 8.6)
- Adults with severe renal impairment: 15 mg once daily in the morning. (2.6, 8.6)
- Patients with ESRD: Not recommended. (2.6, 8.6)

DOSAGE FORMS AND STRENGTHS

- Extended-release capsules: 5 mg, 10 mg, 15 mg, 20 mg, 25 mg, 30 mg (3)

-----**CONTRAINDICATIONS**-----

- Known hypersensitivity or idiosyncrasy to amphetamine (4)
- During or within 14 days following the administration of monoamine oxidase inhibitors (MAOI) (4, 7.1)

-----**WARNINGS AND PRECAUTIONS**-----

- Risks to Patients with Serious Cardiac Disease: Avoid use in patients with known structural cardiac abnormalities, cardiomyopathy, serious cardiac arrhythmias, coronary artery disease, or other serious cardiac disease. (5.2)
- Increased Blood Pressure and Heart Rate: Monitor blood pressure and pulse at appropriate intervals. (5.3)
- Psychiatric Adverse Reactions: Prior to initiating dextroamphetamine saccharate, amphetamine aspartate monohydrate, dextroamphetamine sulfate and amphetamine sulfate extended-release capsules, screen patients for risk factors for developing a manic episode. If new psychotic or manic symptoms occur, consider discontinuing dextroamphetamine saccharate, amphetamine aspartate monohydrate, dextroamphetamine sulfate and amphetamine sulfate extended-release capsules. (5.4)
- Long-Term Suppression of Growth in Pediatric Patients: Closely monitor growth (height and weight) in pediatric patients. Pediatric patients not growing or gaining height or weight as expected may need to have their treatment interrupted. (5.5)
- Seizures: May lower the convulsive threshold. Discontinue in the presence of seizures. (5.6)
- Peripheral Vasculopathy, Including Raynaud’s Phenomenon: Careful observation for digital changes is necessary during dextroamphetamine saccharate, amphetamine aspartate monohydrate, dextroamphetamine sulfate and amphetamine sulfate extended-release capsules treatment. Further clinical evaluation (e.g., rheumatology referral) may be appropriate for patients who develop signs or symptoms of peripheral vasculopathy. (5.7)
- Serotonin Syndrome: Increased risk when coadministered with serotonergic agents (e.g., SSRIs, SNRIs, triptans), but also during overdose situations. If it occurs, discontinue dextroamphetamine saccharate, amphetamine aspartate monohydrate, dextroamphetamine sulfate and amphetamine sulfate extended-release capsules and initiate supportive treatment. (4, 5.8, 10)
- Motor and Verbal Tics, and Worsening of Tourette’s Syndrome: Before initiating dextroamphetamine saccharate, amphetamine aspartate monohydrate, dextroamphetamine sulfate and amphetamine sulfate extended-release capsules, assess the family history and clinically evaluate patients for tics or Tourette’s syndrome. Regularly monitor patients for the emergence or worsening of tics or Tourette’s syndrome. Discontinue treatment if clinically appropriate. (5.9)

-----**ADVERSE REACTIONS**-----

- Pediatric patients ages 6 to 12: Most common adverse reactions (≥5% and with a higher incidence than on placebo) were loss of appetite, insomnia, abdominal pain, emotional lability, vomiting, nervousness, nausea, and fever. (6.1)
- Pediatric patients ages 13 to 17: Most common adverse reactions (≥5% and with a higher incidence than on placebo) were loss of appetite, insomnia, abdominal pain, weight loss, and nervousness. (6.1)
- Adults: Most common adverse reactions ≥5% and with a higher incidence than on placebo were dry mouth, loss of appetite, insomnia, headache, weight loss, nausea, anxiety, agitation, dizziness, tachycardia, diarrhea, asthenia, and urinary tract infections. (6.1)

To report SUSPECTED ADVERSE REACTIONS, contact Lannett Company, Inc. at 1-844-834-0530 or FDA at 1-800-FDA-1088 or www.fda.gov/medwatch.

-----**DRUG INTERACTIONS**-----

- Alkalinizing agents (GI antacids and urinary): These agents increase blood levels of amphetamine. (2.7, 7.1)
- Acidifying agents (GI and urinary): These agents reduce blood levels of amphetamine. (7.1)

-----**USE IN SPECIFIC POPULATIONS**-----

- Pregnancy: May cause fetal harm. (8.1)
- Lactation: Breastfeeding not recommended. (8.2)

See 17 for PATIENT COUNSELING INFORMATION and Medication Guide.

Revised: 10/2023

FULL PRESCRIBING INFORMATION: CONTENTS*

WARNING: ABUSE, MISUSE, AND ADDICTION

1 INDICATIONS AND USAGE

1.1 Attention Deficit Hyperactivity Disorder

2 DOSAGE AND ADMINISTRATION

2.1 Pretreatment Screening

- 2.2 General Administration Information
- 2.3 Recommended Dosage in Pediatric Patients 6 to 12 Years
- 2.4 Recommended Dosage in Pediatric Patients 13 to 17 Years
- 2.5 Recommended Dosage in Adults
- 2.6 Dosage in Patients with Renal Impairment
- 2.7 Dosage Modification Due to Drug Interactions

3 DOSAGE FORMS AND STRENGTHS

4 CONTRAINDICATIONS

5 WARNINGS AND PRECAUTIONS

- 5.1 Abuse, Misuse, and Addiction
- 5.2 Risks to Patients with Serious Cardiac Disease
- 5.3 Increased Blood Pressure and Heart Rate
- 5.4 Psychiatric Adverse Reactions
- 5.5 Long-Term Suppression of Growth in Pediatric Patients
- 5.6 Seizures
- 5.7 Peripheral Vasculopathy, Including Raynaud's Phenomenon
- 5.8 Serotonin Syndrome
- 5.9 Motor and Verbal Tics, and Worsening of Tourette's Syndrome

6 ADVERSE REACTIONS

- 6.1 Clinical Trials Experience
- 6.2 Adverse Reactions Associated with the Use of Amphetamine or Dextroamphetamine Saccharate, Amphetamine Aspartate Monohydrate, Dextroamphetamine Sulfate and Amphetamine Sulfate Extended-Release Capsules

7 DRUG INTERACTIONS

- 7.1 Clinically Important Interactions with Amphetamines
- 7.2 Drug-Laboratory Test Interactions

8 USE IN SPECIFIC POPULATIONS

- 8.1 Pregnancy
- 8.2 Lactation
- 8.4 Pediatric Use
- 8.5 Geriatric Use
- 8.6 Renal Impairment

9 DRUG ABUSE AND DEPENDENCE

- 9.1 Controlled Substance
- 9.2 Abuse
- 9.3 Dependence

10 OVERDOSAGE

11 DESCRIPTION

12 CLINICAL PHARMACOLOGY

- 12.1 Mechanism of Action
- 12.2 Pharmacodynamics
- 12.3 Pharmacokinetics

13 NONCLINICAL TOXICOLOGY

- 13.1 Carcinogenesis, Mutagenesis, Impairment of Fertility
- 13.2 Animal Toxicology and/or Pharmacology

14 CLINICAL STUDIES

16 HOW SUPPLIED/STORAGE AND HANDLING

17 PATIENT COUNSELING INFORMATION

* Sections or subsections omitted from the full prescribing information are not listed.

FULL PRESCRIBING INFORMATION

WARNING: ABUSE, MISUSE, AND ADDICTION

Dextroamphetamine saccharate, amphetamine aspartate monohydrate, dextroamphetamine sulfate and amphetamine sulfate extended-release capsules has a high potential for abuse and misuse, which can lead to the development of a substance use disorder, including addiction. Misuse and abuse of CNS stimulants, including Dextroamphetamine saccharate, amphetamine aspartate monohydrate, dextroamphetamine sulfate and amphetamine sulfate extended-release capsules, can result in overdose and death [see *Overdosage (10)*], and this risk is increased with higher doses or unapproved methods of administration, such as snorting or injection.

Before prescribing dextroamphetamine saccharate, amphetamine aspartate monohydrate, dextroamphetamine sulfate and amphetamine sulfate extended-release capsules, assess each patient's risk for abuse, misuse, and addiction. Educate patients and their families about these risks, proper storage of the drug, and proper disposal of any unused drug. Throughout dextroamphetamine saccharate, amphetamine aspartate monohydrate, dextroamphetamine sulfate and amphetamine sulfate extended-release capsules treatment, reassess each patient's risk of abuse, misuse, and addiction and frequently monitor for signs and symptoms of abuse, misuse, and addiction [see *Warnings and Precautions (5.1)*, *Drug Abuse and Dependence (9.2)*].

1 INDICATIONS AND USAGE

1.1 Attention Deficit Hyperactivity Disorder

Dextroamphetamine saccharate, amphetamine aspartate monohydrate, dextroamphetamine sulfate and amphetamine sulfate extended-release capsules are indicated for the treatment of attention deficit hyperactivity disorder (ADHD) in adults and pediatric patients 6 years and older.

2 DOSAGE AND ADMINISTRATION

2.1 Pretreatment Screening

Prior to treating patients with dextroamphetamine saccharate, amphetamine aspartate monohydrate, dextroamphetamine sulfate and amphetamine sulfate extended-release capsules, assess:

- for the presence of cardiac disease (i.e., perform a careful history, family history of sudden death or ventricular arrhythmia, and physical exam) [see *Warnings and Precautions (5.2)*].
- the family history and clinically evaluate patients for motor or verbal tics or Tourette's syndrome before initiating dextroamphetamine saccharate, amphetamine aspartate monohydrate, dextroamphetamine sulfate and amphetamine sulfate extended-release capsules [see *Warnings and Precautions (5.9)*].

2.2 General Administration Information

Individualize the dosage according to the therapeutic needs and response of the patient. Administer dextroamphetamine saccharate, amphetamine aspartate monohydrate, dextroamphetamine sulfate and amphetamine sulfate extended-release capsules at the lowest effective dosage.

Based on bioequivalence data, patients taking divided doses of immediate-release dextroamphetamine saccharate, amphetamine aspartate monohydrate, dextroamphetamine sulfate and amphetamine sulfate capsules, (for example, twice

daily), may be switched to dextroamphetamine saccharate, amphetamine aspartate monohydrate, dextroamphetamine sulfate and amphetamine sulfate extended-release capsules at the same total daily dose taken once daily. Titrate at weekly intervals to appropriate efficacy and tolerability as indicated.

Dextroamphetamine saccharate, amphetamine aspartate monohydrate, dextroamphetamine sulfate and amphetamine sulfate extended-release capsules may be taken whole, or the capsule may be opened and the entire contents sprinkled on applesauce. If the patient is using the sprinkle administration method, the sprinkled applesauce should be consumed immediately; it should not be stored. Patients should take the applesauce with sprinkled beads in its entirety without chewing. The dose of a single capsule should not be divided. The contents of the entire capsule should be taken, and patients should not take anything less than one capsule per day.

Dextroamphetamine saccharate, amphetamine aspartate monohydrate, dextroamphetamine sulfate and amphetamine sulfate extended-release capsules may be taken orally with or without food.

Dextroamphetamine saccharate, amphetamine aspartate monohydrate, dextroamphetamine sulfate and amphetamine sulfate extended-release capsules should be given upon awakening. Afternoon doses should be avoided because of the potential for insomnia.

2.3 Recommended Dosage in Pediatric Patients 6 to 12 Years

In pediatric patients 6 to 12 years of age with ADHD and are either starting treatment for the first time or switching from another medication, start with 10 mg once daily in the morning; daily dosage may be adjusted in increments of 5 mg or 10 mg at weekly intervals. When in the judgment of the clinician a lower initial dose is appropriate, patients may begin treatment with 5 mg once daily in the morning. The maximum recommended dose for children 6 to 12 years of age is 30 mg/day; doses greater than 30 mg/day have not been studied in children. Dextroamphetamine saccharate, amphetamine aspartate monohydrate, dextroamphetamine sulfate and amphetamine sulfate extended-release capsules have not been studied in children under 6 years of age.

2.4 Recommended Dosage in Pediatric Patients 13 to 17 Years

The recommended starting dose for pediatric patients 13 to 17 years of age with ADHD and are either starting treatment for the first time or switching from another medication is 10 mg/day. The dose may be increased to 20 mg/day after one week if ADHD symptoms are not adequately controlled.

2.5 Recommended Dosage in Adults

In adults with ADHD who are either starting treatment for the first time or switching from another medication, the recommended dose is 20 mg/day.

2.6 Dosage in Patients with Renal Impairment

In adult patients with severe renal impairment (GFR 15 to <30 mL/min/1.73 m²), the recommended dose is 15 mg once daily in the morning. In pediatric patients (6 to 17 years of age) with severe renal impairment, the recommended dose is 5 mg once daily. The maximum dose for children 6 to 12 years of age with severe renal impairment is 20 mg once daily. Dextroamphetamine saccharate, amphetamine aspartate monohydrate, dextroamphetamine sulfate and amphetamine sulfate extended-release capsules are not recommended in patients with end stage renal disease (ESRD) (GFR <15 mL/min/1.73 m²) [see *Use in Specific Populations (8.6), Clinical Pharmacology (12.3)*].

2.7 Dosage Modification Due to Drug Interactions

Agents that alter urinary pH can impact excretion and alter blood levels of amphetamines. Acidifying agents (e.g., ascorbic acid) decrease blood levels; adjust

dextroamphetamine saccharate, amphetamine aspartate monohydrate, dextroamphetamine sulfate and amphetamine sulfate extended-release capsules dosage based on clinical response [see *Drug Interactions (7)*].

3 DOSAGE FORMS AND STRENGTHS

Dextroamphetamine Saccharate, Amphetamine Aspartate Monohydrate, Dextroamphetamine Sulfate and Amphetamine Sulfate Extended-Release Capsules 5 mg - Size 3 capsule with powder blue opaque cap and natural body imprinted with "Lannett" and "0790" in black and filled with pellets.

Dextroamphetamine Saccharate, Amphetamine Aspartate Monohydrate, Dextroamphetamine Sulfate and Amphetamine Sulfate Extended-Release Capsules 10 mg - Size 3 capsule with powder blue opaque cap and blue body imprinted with "Lannett" and "0791" in black and filled with pellets.

Dextroamphetamine Saccharate, Amphetamine Aspartate Monohydrate, Dextroamphetamine Sulfate and Amphetamine Sulfate Extended-Release Capsules 15 mg - Size 2 capsule with white opaque cap and blue body imprinted with "Lannett" and "0792" in black and filled with pellets.

Dextroamphetamine Saccharate, Amphetamine Aspartate Monohydrate, Dextroamphetamine Sulfate and Amphetamine Sulfate Extended-Release Capsules 20 mg - Size 2 capsule with orange opaque cap and light orange opaque body imprinted with "Lannett" and "0793" in black and filled with pellets.

Dextroamphetamine Saccharate, Amphetamine Aspartate Monohydrate, Dextroamphetamine Sulfate and Amphetamine Sulfate Extended-Release Capsules 25 mg - Size 1 capsule with white opaque cap and light orange opaque body imprinted with "Lannett" and "0794" in black and filled with pellets.

Dextroamphetamine Saccharate, Amphetamine Aspartate Monohydrate, Dextroamphetamine Sulfate and Amphetamine Sulfate Extended-Release Capsules 30 mg - Size 1 capsule with orange opaque cap and natural body imprinted with "Lannett" and "0795" in black and filled with pellets.

4 CONTRAINDICATIONS

Dextroamphetamine saccharate, amphetamine aspartate monohydrate, dextroamphetamine sulfate and amphetamine sulfate extended-release capsules administration is contraindicated in patients:

- known to be hypersensitive to amphetamine, or other components of dextroamphetamine saccharate, amphetamine aspartate monohydrate, dextroamphetamine sulfate and amphetamine sulfate extended-release capsules. Hypersensitivity reactions such as angioedema and anaphylactic reactions have been reported in patients treated with other amphetamine products [see *Adverse Reactions (6.2)*]
- taking monoamine oxidase inhibitors (MAOIs), or within 14 days of stopping MAOIs (including MAOIs such as linezolid or intravenous methylene blue), because of an increased risk of hypertensive crisis [see *Warnings and Precautions (5.8)*, *Drug Interactions (7.1)*]

5 WARNINGS AND PRECAUTIONS

5.1 Abuse, Misuse, and Addiction

Dextroamphetamine saccharate, amphetamine aspartate monohydrate, dextroamphetamine sulfate and amphetamine sulfate extended-release capsules has a high potential for abuse and misuse. The use of dextroamphetamine saccharate, amphetamine aspartate monohydrate, dextroamphetamine sulfate and amphetamine

sulfate extended-release capsules exposes individuals to the risks of abuse and misuse, which can lead to the development of a substance use disorder, including addiction. Dextroamphetamine saccharate, amphetamine aspartate monohydrate, dextroamphetamine sulfate and amphetamine sulfate extended-release capsules can be diverted for non-medical use into illicit channels or distribution [see *Drug Abuse and Dependence* (9.2)] . Misuse and abuse of CNS stimulants, including dextroamphetamine saccharate, amphetamine aspartate monohydrate, dextroamphetamine sulfate and amphetamine sulfate extended-release capsules, can result in overdose and death [see *Overdosage* (10)] , and this risk is increased with higher doses or unapproved methods of administration, such as snorting or injection.

Before prescribing dextroamphetamine saccharate, amphetamine aspartate monohydrate, dextroamphetamine sulfate and amphetamine sulfate extended-release capsules, assess each patient's risk for abuse, misuse, and addiction. Educate patients and their families about these risks and proper disposal of any unused drug. Advise patients to store dextroamphetamine saccharate, amphetamine aspartate monohydrate, dextroamphetamine sulfate and amphetamine sulfate extended-release capsules in a safe place, preferably locked, and instruct patients to not give dextroamphetamine saccharate, amphetamine aspartate monohydrate, dextroamphetamine sulfate and amphetamine sulfate extended-release capsules to anyone else. Throughout dextroamphetamine saccharate, amphetamine aspartate monohydrate, dextroamphetamine sulfate and amphetamine sulfate extended-release capsules treatment, reassess each patient's risk of abuse, misuse, and addiction and frequently monitor for signs and symptoms of abuse, misuse, and addiction.

5.2 Risks to Patients with Serious Cardiac Disease

Sudden death has been reported in patients with structural cardiac abnormalities or other serious cardiac disease who were treated with CNS stimulants at the recommended ADHD dosage. Avoid dextroamphetamine saccharate, amphetamine aspartate monohydrate, dextroamphetamine sulfate and amphetamine sulfate extended-release capsules use in patients with known structural cardiac abnormalities, cardiomyopathy, serious cardiac arrhythmia, coronary artery disease, or other serious cardiac disease.

5.3 Increased Blood Pressure and Heart Rate

CNS stimulants may cause an increase in blood pressure (mean increase approximately 2 to 4 mmHg) and heart rate (mean increase approximately 3 to 6 bpm). Monitor all dextroamphetamine saccharate, amphetamine aspartate monohydrate, dextroamphetamine sulfate and amphetamine sulfate extended-release capsules-treated patients for hypertension and tachycardia.

5.4 Psychiatric Adverse Reactions

Exacerbation of Pre-Existing Psychosis

Administration of stimulants may exacerbate symptoms of behavior disturbance and thought disorder in patients with pre-existing psychotic disorder.

Induction of a Manic Episode in Patients with Bipolar Disease

CNS stimulants may induce a manic or mixed episode in patients. Prior to initiating dextroamphetamine saccharate, amphetamine aspartate monohydrate, dextroamphetamine sulfate and amphetamine sulfate extended-release capsules treatment, screen patients for risk factors for developing a manic episode (e.g., comorbid or history of depressive symptoms or a family history of suicide, bipolar disorder, or depression).

New Psychotic or Manic Symptoms

CNS stimulants, at the recommended dosage, may cause psychotic or manic symptoms (e.g., hallucinations, delusional thinking, or mania) in patients without a prior history of psychotic illness or mania. In a pooled analysis of multiple short-term, placebo-controlled

studies of CNS stimulants, psychotic or manic symptoms occurred in approximately 0.1% of CNS stimulant-treated patients compared to 0% of placebo-treated patients. If such symptoms occur, consider discontinuing dextroamphetamine saccharate, amphetamine aspartate monohydrate, dextroamphetamine sulfate and amphetamine sulfate extended-release capsules.

5.5 Long-Term Suppression of Growth in Pediatric Patients

CNS stimulants have been associated with weight loss and slowing of growth rate in pediatric patients. Closely monitor growth (weight and height) in dextroamphetamine saccharate, amphetamine aspartate monohydrate, dextroamphetamine sulfate and amphetamine sulfate extended-release capsules-treated pediatric patients treated with CNS stimulants.

In a controlled trial of dextroamphetamine saccharate, amphetamine aspartate monohydrate, dextroamphetamine sulfate and amphetamine sulfate extended-release capsules in adolescents, mean weight change from baseline within the initial 4 weeks of therapy was -1.1 lbs. and -2.8 lbs., respectively, for patients receiving 10 and 20 mg dextroamphetamine saccharate, amphetamine aspartate monohydrate, dextroamphetamine sulfate and amphetamine sulfate extended-release capsules. Higher doses were associated with greater weight loss within the initial 4 weeks of treatment. Chronic use of amphetamines can be expected to cause a similar suppression of growth [see *Adverse Reactions* (6.1)] .

Pediatric patients who are not growing or gaining weight as expected may need to have their treatment interrupted.

5.6 Seizures

There is some clinical evidence that stimulants may lower the convulsive threshold in patients with prior history of seizures, in patients with prior EEG abnormalities in the absence of seizures, and very rarely, in patients without a history of seizures and no prior EEG evidence of seizures. In the presence of seizures, dextroamphetamine saccharate, amphetamine aspartate monohydrate, dextroamphetamine sulfate and amphetamine sulfate extended-release capsules should be discontinued.

5.7 Peripheral Vasculopathy, Including Raynaud's Phenomenon

CNS stimulants, including dextroamphetamine saccharate, amphetamine aspartate monohydrate, dextroamphetamine sulfate and amphetamine sulfate extended-release capsules, used to treat ADHD are associated with peripheral vasculopathy, including Raynaud's phenomenon. Signs and symptoms are usually intermittent and mild; however, sequelae have included digital ulceration and/or soft tissue breakdown. Effects of peripheral vasculopathy, including Raynaud's phenomenon, were observed in post-marketing reports and at the therapeutic dosage of CNS stimulants in all age groups throughout the course of treatment. Signs and symptoms generally improved after dosage reduction or discontinuation of the CNS stimulant.

Careful observation for digital changes is necessary during dextroamphetamine saccharate, amphetamine aspartate monohydrate, dextroamphetamine sulfate and amphetamine sulfate extended-release capsules treatment. Further clinical evaluation (e.g., rheumatology referral) may be appropriate for dextroamphetamine saccharate, amphetamine aspartate monohydrate, dextroamphetamine sulfate and amphetamine sulfate extended-release capsules-treated patients who develop signs or symptoms of peripheral vasculopathy.

5.8 Serotonin Syndrome

Serotonin syndrome, a potentially life-threatening reaction, may occur when amphetamines are used in combination with other drugs that affect the serotonergic neurotransmitter systems such as MAOIs, selective serotonin reuptake inhibitors

(SSRIs), serotonin norepinephrine reuptake inhibitors (SNRIs), triptans, tricyclic antidepressants, fentanyl, lithium, tramadol, tryptophan, buspirone, and St. John's Wort [see *Drug Interactions (7.1)*] . Amphetamines and amphetamine derivatives are known to be metabolized, to some degree, by cytochrome P450 2D6 (CYP2D6) and display minor inhibition of CYP2D6 metabolism [see *Clinical Pharmacology (12.3)*] . The potential for a pharmacokinetic interaction exists with the coadministration of CYP2D6 inhibitors which may increase the risk with increased exposure to dextroamphetamine saccharate, amphetamine aspartate monohydrate, dextroamphetamine sulfate and amphetamine sulfate extended-release capsules. In these situations, consider an alternative nonserotonergic drug or an alternative drug that does not inhibit CYP2D6 [see *Drug Interactions (7.1)*] . Serotonin syndrome symptoms may include mental status changes (e.g., agitation, hallucinations, delirium, and coma), autonomic instability (e.g., tachycardia, labile blood pressure, dizziness, diaphoresis, flushing, hyperthermia), neuromuscular symptoms (e.g., tremor, rigidity, myoclonus, hyperreflexia, incoordination), seizures, and/or gastrointestinal symptoms (e.g., nausea, vomiting, diarrhea).

Concomitant use of dextroamphetamine saccharate, amphetamine aspartate monohydrate, dextroamphetamine sulfate and amphetamine sulfate extended-release capsules with MAOI drugs is contraindicated [see *Contraindications (4)*] .

Discontinue treatment with dextroamphetamine saccharate, amphetamine aspartate monohydrate, dextroamphetamine sulfate and amphetamine sulfate extended-release capsules and any concomitant serotonergic agents immediately if symptoms of serotonin syndrome occur, and initiate supportive symptomatic treatment. Concomitant use of dextroamphetamine saccharate, amphetamine aspartate monohydrate, dextroamphetamine sulfate and amphetamine sulfate extended-release capsules with other serotonergic drugs or CYP2D6 inhibitors should be used only if the potential benefit justifies the potential risk. If clinically warranted, consider initiating dextroamphetamine saccharate, amphetamine aspartate monohydrate, dextroamphetamine sulfate and amphetamine sulfate extended-release capsules with lower doses, monitoring patients for the emergence of serotonin syndrome during drug initiation or titration, and informing patients of the increased risk for serotonin syndrome.

5.9 Motor and Verbal Tics, and Worsening of Tourette's Syndrome

CNS stimulants, including amphetamine, have been associated with the onset or exacerbation of motor and verbal tics. Worsening of Tourette's syndrome has also been reported [see *Adverse Reactions (6.2)*] .

Before initiating dextroamphetamine saccharate, amphetamine aspartate monohydrate, dextroamphetamine sulfate and amphetamine sulfate extended-release capsules, assess the family history and clinically evaluate patients for tics or Tourette's syndrome. Regularly monitor dextroamphetamine saccharate, amphetamine aspartate monohydrate, dextroamphetamine sulfate and amphetamine sulfate extended-release capsules-treated patients for the emergence or worsening of tics or Tourette's syndrome, and discontinue treatment if clinically appropriate.

6 ADVERSE REACTIONS

The following adverse reactions are discussed in greater detail in other sections of the labeling:

- Abuse, Misuse, and Addiction [see *Boxed Warning, Warnings and Precautions (5.1), Drug Abuse and Dependence (9.2, 9.3)*]
- Risks to Patients with Serious Cardiac Disease [see *Warnings and Precautions (5.2)*]
- Increased Blood Pressure and Heart Rate [see *Warnings and Precautions (5.3)*]
- Psychiatric Adverse Reactions [see *Warnings and Precautions (5.4)*]
- Long-Term Suppression of Growth in Pediatric Patients [see *Warnings and*

Precautions (5.5)]

- Seizures [*see Warnings and Precautions (5.6)]*
- Peripheral Vasculopathy, including Raynaud's Phenomenon [*see Warnings and Precautions (5.7)]*
- Serotonin Syndrome [*see Warnings and Precautions (5.8)]*
- Motor and Verbal Tics, and Worsening of Tourette's Syndrome [*see Warnings and Precautions (5.9)]*

6.1 Clinical Trials Experience

Because clinical trials are conducted under widely varying conditions, adverse reaction rates observed in the clinical trials of a drug cannot be directly compared to rates in the clinical trials of another drug and may not reflect the rates observed in practice.

The premarketing development program for dextroamphetamine saccharate, amphetamine aspartate monohydrate, dextroamphetamine sulfate and amphetamine sulfate extended-release capsules included exposures in a total of 1,315 participants in clinical trials (635 pediatric patients, 350 adolescent patients, 248 adult patients, and 82 healthy adult subjects). Of these, 635 patients (ages 6 to 12) were evaluated in two controlled clinical studies, one open-label clinical study, and two single-dose clinical pharmacology studies (N=40). Safety data on all patients are included in the discussion that follows. Adverse reactions were assessed by collecting adverse reactions, results of physical examinations, vital signs, weights, laboratory analyses, and ECGs.

Adverse reactions during exposure were obtained primarily by general inquiry and recorded by clinical investigators using terminology of their own choosing. Consequently, it is not possible to provide a meaningful estimate of the proportion of individuals experiencing adverse reactions without first grouping similar types of reactions into a smaller number of standardized event categories. In the tables and listings that follow, COSTART terminology has been used to classify reported adverse reactions.

The stated frequencies of adverse reactions represent the proportion of individuals who experienced, at least once, a treatment-emergent adverse event of the type listed.

Adverse Reactions Leading to Discontinuation of Treatment

In two placebo-controlled studies of up to 5 weeks duration among children with ADHD, 2.4% (10/425) of dextroamphetamine saccharate, amphetamine aspartate monohydrate, dextroamphetamine sulfate and amphetamine sulfate extended-release capsules-treated patients discontinued due to adverse reactions (including three patients with loss of appetite, one of whom also reported insomnia) compared to 2.7% (7/259) receiving placebo.

The most frequent adverse reactions leading to discontinuation of dextroamphetamine saccharate, amphetamine aspartate monohydrate, dextroamphetamine sulfate and amphetamine sulfate extended-release capsules in controlled and uncontrolled, multiple-dose clinical trials of children (N=595) were anorexia (loss of appetite) (2.9%), insomnia (1.5%), weight loss (1.2%), emotional lability (1%), and depression (0.7%). Over half of these patients were exposed to dextroamphetamine saccharate, amphetamine aspartate monohydrate, dextroamphetamine sulfate and amphetamine sulfate extended-release capsules for 12 months or more.

In a separate placebo-controlled 4 week study in adolescents with ADHD, five patients (2.1%) discontinued treatment due to adverse events among dextroamphetamine saccharate, amphetamine aspartate monohydrate, dextroamphetamine sulfate and amphetamine sulfate extended-release capsules-treated patients (N=233) compared to none who received placebo (N=54). The most frequent adverse event leading to discontinuation and considered to be drug-related (i.e., leading to discontinuation in at least 1% of dextroamphetamine saccharate, amphetamine aspartate monohydrate, dextroamphetamine sulfate and amphetamine sulfate extended-release capsules-treated patients and at a rate at least twice that of placebo) was insomnia (1.3%, n=3).

In one placebo-controlled 4 week study among adults with ADHD with doses 20 to 60 mg, 23 patients (12.0%) discontinued treatment due to adverse events among dextroamphetamine saccharate, amphetamine aspartate monohydrate, dextroamphetamine sulfate and amphetamine sulfate extended-release capsules-treated patients (N=191) compared to one patient (1.6%) who received placebo (N=64). The most frequent adverse events leading to discontinuation and considered to be drug-related (i.e., leading to discontinuation in at least 1% of dextroamphetamine saccharate, amphetamine aspartate monohydrate, dextroamphetamine sulfate and amphetamine sulfate extended-release capsules-treated patients and at a rate at least twice that of placebo) were insomnia (5.2%, n=10), anxiety (2.1%, n=4), nervousness (1.6%, n=3), dry mouth (1.6%, n=3), anorexia (1.6%, n=3), tachycardia (1.6%, n=3), headache (1.6%, n=3), and asthenia (1.0%, n=2).

Adverse Reactions Occurring in Controlled Trials

Adverse reactions reported in a 3 week clinical trial of children and a 4 week clinical trial in adolescents and adults, respectively, treated with dextroamphetamine saccharate, amphetamine aspartate monohydrate, dextroamphetamine sulfate and amphetamine sulfate extended-release capsules or placebo are presented in the tables below.

Table 1: Adverse Reactions Reported by 2% or More of Children (6 to 12 Years Old) Receiving Dextroamphetamine Saccharate, Amphetamine Aspartate Monohydrate, Dextroamphetamine Sulfate and Amphetamine Sulfate Extended-Release Capsules with Higher Incidence Than on Placebo in a 584 Patient Clinical Study

Body System	Preferred Term	Dextroamphetamine Saccharate, Amphetamine Aspartate Monohydrate, Dextroamphetamine Sulfate and Amphetamine Sulfate Extended-Release Capsules (n=374)	Placebo (n=210)
General	Abdominal Pain (stomachache)	14%	10%
	Fever	5%	2%
	Infection	4%	2%
	Accidental Injury	3%	2%
	Asthenia (fatigue)	2%	0%
Digestive System	Loss of Appetite	22%	2%
	Vomiting	7%	4%
	Nausea	5%	3%
	Dyspepsia	2%	1%
Nervous System	Insomnia	17%	2%
	Emotional Lability	9%	2%
	Nervousness	6%	2%
	Dizziness	2%	0%
Metabolic/Nutritional	Weight Loss	4%	0%

Table 2: Adverse Reactions Reported by 5% or More of Adolescents (13 to 17 Years Old) Weighing ≤75 kg/165 lbs Receiving Dextroamphetamine Saccharate, Amphetamine Aspartate Monohydrate, Dextroamphetamine Sulfate and Amphetamine Sulfate Extended-Release Capsules with Higher Incidence Than Placebo in a 287 Patient Clinical Forced Weekly-Dose Titration Study*

Body System	Preferred Term	Dextroamphetamine Saccharate, Amphetamine Aspartate Monohydrate, Dextroamphetamine Sulfate and Amphetamine Sulfate Extended-Release Capsules (n=233)	Placebo (n=54)
General	Abdominal Pain (stomachache)	11%	2%
Digestive System	Loss of Appetite ^b	36%	2%
Nervous System	Insomnia ^b Nervousness	12% 6%	4% 6% ^a
Metabolic/Nutritional	Weight Loss ^b	9%	0%

Note: The following reactions did not meet the criterion for inclusion in *Table 2* but were reported by 2 to 4% of adolescent patients receiving dextroamphetamine saccharate, amphetamine aspartate monohydrate, dextroamphetamine sulfate and amphetamine sulfate extended-release capsules with a higher incidence than patients receiving placebo in this study: accidental injury, asthenia (fatigue), dry mouth, dyspepsia, emotional lability, nausea, somnolence, and vomiting.

*Included doses up to 40 mg.

^aAppears the same due to rounding.

^bDose-related adverse reactions.

Table 3: Adverse Reactions Reported by 5% or More of Adults Receiving Dextroamphetamine Saccharate, Amphetamine Aspartate Monohydrate, Dextroamphetamine Sulfate and Amphetamine Sulfate Extended-Release Capsules with Higher Incidence Than on Placebo in a 255 Patient Clinical Forced Weekly-Dose Titration Study*

Body System	Preferred Term	Dextroamphetamine Saccharate, Amphetamine Aspartate Monohydrate, Dextroamphetamine Sulfate and Amphetamine Sulfate Extended-Release Capsules (n=191)	Placebo (n=64)
General	Headache Asthenia	26% 6%	13% 5%
Digestive System	Dry Mouth Loss of Appetite Nausea Diarrhea	35% 33% 8% 6%	5% 3% 3% 0%
Nervous System	Insomnia Agitation Anxiety Dizziness Nervousness	27% 8% 8% 7% 13%	13% 5% 5% 0% 13% ^a
Cardiovascular	Tachycardia	6%	0%

System	Tachycardia	0/0	0/0
Metabolic/Nutritional	Weight Loss	10%	0%
Urogenital System	Urinary Tract Infection	5%	0%

Note: The following reactions did not meet the criterion for inclusion in *Table 3* but were reported by 2 to 4% of adult patients receiving dextroamphetamine saccharate, amphetamine aspartate monohydrate, dextroamphetamine sulfate and amphetamine sulfate extended-release capsules with a higher incidence than patients receiving placebo in this study: infection, photosensitivity reaction, constipation, tooth disorder (e.g., teeth clenching, tooth infection), emotional lability, libido decreased, somnolence, speech disorder (e.g., stuttering, excessive speech), palpitation, twitching, dyspnea, sweating, dysmenorrhea, and impotence.

*Included doses up to 60 mg.

^aAppears the same due to rounding.

Hypertension

In a controlled 4 week outpatient clinical study of adolescents with ADHD, isolated systolic blood pressure elevations ≥ 15 mmHg were observed in 7/64 (11%) placebo-treated patients and 7/100 (7%) patients receiving dextroamphetamine saccharate, amphetamine aspartate monohydrate, dextroamphetamine sulfate and amphetamine sulfate extended-release capsules 10 or 20 mg. Isolated elevations in diastolic blood pressure ≥ 8 mmHg were observed in 16/64 (25%) placebo-treated patients and 22/100 (22%) dextroamphetamine saccharate, amphetamine aspartate monohydrate, dextroamphetamine sulfate and amphetamine sulfate extended-release capsules-treated patients. Similar results were observed at higher doses [see *Warnings and Precautions*(5.2)].

In a single-dose pharmacokinetic study in 23 adolescents with ADHD, isolated increases in systolic blood pressure (above the upper 95% CI for age, gender, and stature) were observed in 2/17 (12%) and 8/23 (35%), subjects administered 10 and 20 mg dextroamphetamine saccharate, amphetamine aspartate monohydrate, dextroamphetamine sulfate and amphetamine sulfate extended-release capsules, respectively. Higher single doses were associated with a greater increase in systolic blood pressure. All increases were transient, appeared maximal at 2 to 4 hours postdose and, not associated with symptoms.

6.2 Adverse Reactions Associated with the Use of Amphetamine or Dextroamphetamine Saccharate, Amphetamine Aspartate Monohydrate, Dextroamphetamine Sulfate and Amphetamine Sulfate Extended-Release Capsules

The following adverse reactions have been identified during postapproval use of amphetamine or dextroamphetamine saccharate, amphetamine aspartate monohydrate, dextroamphetamine sulfate and amphetamine sulfate extended-release capsules. Because these reactions are reported voluntarily from a population of uncertain size, it is not always possible to reliably estimate their frequency or establish a causal relationship to drug exposure.

Allergic: Urticaria, rash, hypersensitivity reactions including angioedema and anaphylaxis. Serious skin rashes, including Stevens-Johnson syndrome and toxic epidermal necrolysis have been reported.

Cardiovascular: Palpitations. There have been isolated reports of cardiomyopathy associated with chronic amphetamine use.

Central Nervous System: Psychotic episodes at recommended doses, overstimulation, restlessness, irritability, euphoria, dyskinesia, dysphoria, depression, tremor, motor and verbal tics, aggression, anger, logorrhea, dermatillomania, paresthesia (including

formication), and bruxism.

Endocrine: Impotence, changes in libido, frequent or prolonged erections.

Eye Disorders: Vision blurred, mydriasis.

Gastrointestinal: Unpleasant taste, constipation, intestinal ischemia, and other gastrointestinal disturbances.

Musculoskeletal and Connective Tissue Disorders: Rhabdomyolysis.

Skin: Alopecia.

Vascular Disorders: Raynaud's phenomenon.

7 DRUG INTERACTIONS

7.1 Clinically Important Interactions with Amphetamines

Table 4: Drugs Having Clinically Important Interactions with Amphetamines

Monoamine Oxidase Inhibitors (MAOIs)	
Clinical Impact	Concomitant use of MAOIs and CNS stimulants can cause hypertensive crisis. Potential outcomes include death, stroke, myocardial infarction, aortic dissection, ophthalmological complications, eclampsia, pulmonary edema, and renal failure.
Intervention	Do not administer dextroamphetamine saccharate, amphetamine aspartate monohydrate, dextroamphetamine sulfate and amphetamine sulfate extended-release capsules concomitantly or within 14 days after discontinuing MAOI [see <i>Contraindications (4)</i>].
Serotonergic Drugs	
Clinical Impact	The concomitant use of dextroamphetamine saccharate, amphetamine aspartate monohydrate, dextroamphetamine sulfate and amphetamine sulfate extended-release capsules and serotonergic drugs increases the risk of serotonin syndrome.
Intervention	Initiate with lower doses and monitor patients for signs and symptoms of serotonin syndrome, particularly during dextroamphetamine saccharate, amphetamine aspartate monohydrate, dextroamphetamine sulfate and amphetamine sulfate extended-release capsules initiation or dosage increase. If serotonin syndrome occurs, discontinue dextroamphetamine saccharate, amphetamine aspartate monohydrate, dextroamphetamine sulfate and amphetamine sulfate extended-release capsules and the concomitant serotonergic drug(s) [see <i>Warnings and Precautions (5.8)</i>].
CYP2D6 Inhibitors	
Clinical Impact	The concomitant use of dextroamphetamine saccharate, amphetamine aspartate monohydrate, dextroamphetamine sulfate and amphetamine sulfate extended-release capsules and CYP2D6 inhibitors may increase the exposure of dextroamphetamine saccharate, amphetamine aspartate monohydrate, dextroamphetamine sulfate and amphetamine sulfate extended-release capsules compared to the use of the drug alone and increase the risk of serotonin syndrome.
Intervention	Initiate with lower doses and monitor patients for signs and symptoms of serotonin syndrome particularly during dextroamphetamine saccharate, amphetamine aspartate monohydrate, dextroamphetamine sulfate and amphetamine sulfate extended-release capsules initiation and after a dosage increase. If serotonin syndrome occurs, discontinue dextroamphetamine saccharate, amphetamine aspartate monohydrate, dextroamphetamine sulfate and amphetamine sulfate extended-release capsules and the CYP2D6 inhibitor [see <i>Warnings and Precautions (5.8)</i>].

Overdosage (10)].

Alkalinizing Agents

Clinical Impact	Increase blood levels and potentiate the action of amphetamine.
Intervention	Coadministration of dextroamphetamine saccharate, amphetamine aspartate monohydrate, dextroamphetamine sulfate and amphetamine sulfate extended-release capsules and gastrointestinal or urinary alkalinizing agents should be avoided.

Acidifying Agents

Clinical Impact	Lower blood levels and efficacy of amphetamines.
Intervention	Increase dose based on clinical response.

Tricyclic Antidepressants

Clinical Impact	May enhance the activity of tricyclic or sympathomimetic agents causing striking and sustained increases in the concentration of d-amphetamine in the brain; cardiovascular effects can be potentiated.
Intervention	Monitor frequently and adjust or use alternative therapy based on clinical response.

Proton Pump Inhibitors

Clinical Impact	Time to maximum concentration (T_{max}) of amphetamine is decreased compared to when administered alone.
Intervention	Monitor patients for changes in clinical effect and adjust therapy based on clinical response.

7.2 Drug-Laboratory Test Interactions

Amphetamines can cause a significant elevation in plasma corticosteroid levels. This increase is greatest in the evening. Amphetamines may interfere with urinary steroid determinations.

8 USE IN SPECIFIC POPULATIONS

8.1 Pregnancy

Pregnancy Exposure Registry

There is a pregnancy exposure registry that monitors pregnancy outcomes in women exposed to dextroamphetamine saccharate, amphetamine aspartate monohydrate, dextroamphetamine sulfate and amphetamine sulfate extended-release capsules during pregnancy. Healthcare providers are encouraged to register patients by calling the National Pregnancy Registry for Psychostimulants at 1-866-961-2388 or visiting online at <https://womensmentalhealth.org/clinical-and-research-programs/pregnancyregistry/othermedications/>.

Risk Summary

Available data from published epidemiologic studies and postmarketing reports on use of prescription amphetamine in pregnant women have not identified a drug-associated risk of major birth defects and miscarriage (*see Data*). Adverse pregnancy outcomes, including premature delivery and low birth weight, have been seen in infants born to mothers taking amphetamines during pregnancy (*see Clinical Considerations*).

No apparent effects on morphological development were observed in embryo-fetal development studies, with oral administration of amphetamine to rats and rabbits during organogenesis at doses 2 and 12 times, respectively, the maximum recommended human dose (MRHD) of 20 mg/day given to adolescents, on a mg/m² basis. However, in a pre- and postnatal development study, amphetamine (d-to-l-ratio of 3:1) administered orally to pregnant rats during gestation and lactation caused a decrease in pup survival and a decrease in pup body weight that correlated with a delay in developmental

landmarks at clinically relevant doses of amphetamine. In addition, adverse effects on reproductive performance were observed in pups whose mothers were treated with amphetamine. Long-term neurochemical and behavioral effects have also been reported in animal developmental studies using clinically relevant doses of amphetamine (*see Data*).

The estimated background risk of major birth defects and miscarriage for the indicated population is unknown. All pregnancies have a background risk of birth defect, loss, or other adverse outcomes. In the U.S. general population, the estimated background risk of major birth defects and miscarriage in clinically recognized pregnancies is 2 to 4% and 15 to 20%, respectively.

Clinical Considerations

Fetal/Neonatal Adverse Reactions

Amphetamines, such as dextroamphetamine saccharate, amphetamine aspartate monohydrate, dextroamphetamine sulfate and amphetamine sulfate extended-release capsules, cause vasoconstriction and thereby may decrease placental perfusion. In addition, amphetamines can stimulate uterine contractions, increasing the risk of premature delivery. Infants born to mothers taking amphetamines during pregnancy have an increased risk of premature delivery and low birth weight.

Monitor infants born to mothers taking amphetamines for symptoms of withdrawal such as feeding difficulties, irritability, agitation, and excessive drowsiness.

Data

Animal Data

Amphetamine (d- to l- enantiomer ratio of 3:1) had no apparent effects on embryofetal morphological development or survival when administered orally to pregnant rats and rabbits throughout the period of organogenesis at doses of up to 6 and 16 mg/kg/day, respectively. These doses are approximately 2 and 12 times, respectively, the maximum recommended human dose (MRHD) of 20 mg/day given to adolescents, on a mg/m² basis. Fetal malformations and death have been reported in mice following parenteral administration of d-amphetamine doses of 50 mg/kg/day (approximately 10 times the MRHD given to adolescents on a mg/m² basis) or greater to pregnant animals. Administration of these doses was also associated with severe maternal toxicity.

A study was conducted in which pregnant rats received daily oral doses of amphetamine (d- to l-enantiomer ratio of 3:1) of 2, 6, and 10 mg/kg from gestation Day 6 to lactation Day 20. These doses are approximately 0.8, 2, and 4 times the MRHD of 20 mg/day given to adolescents, on a mg/m² basis. All doses caused hyperactivity and decreased weight gain in the dams. A decrease in pup survival was seen at all doses. A decrease in pup body weight was seen at 6 and 10 mg/kg which correlated with delays in developmental landmarks, such as preputial separation and vaginal opening. Increased pup locomotor activity was seen at 10 mg/kg on Day 22 postpartum but not at 5 weeks postweaning. When pups were tested for reproductive performance at maturation, gestational weight gain, number of implantations, and number of delivered pups were decreased in the group whose mothers had been given 10 mg/kg.

A number of studies from the literature in rodents indicate that prenatal or early postnatal exposure to amphetamine (d- or d, l-) at doses similar to those used clinically can result in long-term neurochemical and behavioral alterations. Reported behavioral effects include learning and memory deficits, altered locomotor activity, and changes in sexual function.

8.2 Lactation

Risk Summary

Based on limited case reports in published literature, amphetamine (d- or d, l-) is present in human milk, at relative infant doses of 2 to 13.8% of the maternal weight-adjusted dosage and a milk/plasma ratio ranging between 1.9 and 7.5. There are no reports of

adverse effects on the breastfed infant. Long-term neurodevelopmental effects on infants from amphetamine exposure are unknown. It is possible that large dosages of amphetamine might interfere with milk production, especially in women whose lactation is not well established. Because of the potential for serious adverse reactions in nursing infants, advise patients that breastfeeding is not recommended during treatment with dextroamphetamine saccharate, amphetamine aspartate monohydrate, dextroamphetamine sulfate and amphetamine sulfate extended-release capsules.

8.4 Pediatric Use

The safety and effectiveness of dextroamphetamine saccharate, amphetamine aspartate monohydrate, dextroamphetamine sulfate and amphetamine sulfate extended-release capsules have been established in pediatric patients with ADHD 6 years of age and older.

The safety and efficacy of dextroamphetamine saccharate, amphetamine aspartate monohydrate, dextroamphetamine sulfate and amphetamine sulfate extended-release capsules in pediatric patients less than 6 years of age have not been established. Long-term effects of amphetamines in pediatric patients have not been well established.

Long-Term Growth Suppression

Growth should be monitored during treatment with stimulants, including dextroamphetamine saccharate, amphetamine aspartate monohydrate, dextroamphetamine sulfate and amphetamine sulfate extended-release capsules, and pediatric patients aged 6 to 17 years who are not growing or gaining weight as expected may need to have their treatment interrupted [see *Warnings and Precautions (5.5)*].

Juvenile Animal Toxicity Data

Juvenile rats treated with mixed amphetamine salts early in the postnatal period through sexual maturation demonstrated transient changes in motor activity. Learning and memory was impaired at approximately 6 times the maximum recommended human dose (MRHD) given to children on a mg/m² basis. No recovery was seen following a drug-free period. A delay in sexual maturation was observed at a dose approximately 6 times the MRHD given to children on a mg/m² basis, although there was no effect on fertility.

In a juvenile developmental study, rats received daily oral doses of amphetamine (d to l enantiomer ratio of 3:1) of 2, 6, or 20 mg/kg on Days 7 to 13 of age; from Day 14 to approximately Day 60 of age these doses were given b.i.d. for total daily doses of 4, 12, or 40 mg/kg. The latter doses are approximately 0.6, 2, and 6 times the MRHD of 30 mg/day, given to children on a mg/m² basis. Postdosing hyperactivity was seen at all doses; motor activity measured prior to the daily dose was decreased during the dosing period but the decreased motor activity was largely absent after an 18 day drug-free recovery period. Performance in the Morris water maze test for learning and memory was impaired at the 40 mg/kg dose, and sporadically at the lower doses, when measured prior to the daily dose during the treatment period; no recovery was seen after a 19 day drug-free period. A delay in the developmental milestones of vaginal opening and preputial separation was seen at 40 mg/kg but there was no effect on fertility.

8.5 Geriatric Use

Dextroamphetamine saccharate, amphetamine aspartate monohydrate, dextroamphetamine sulfate and amphetamine sulfate extended-release capsules have not been studied in the geriatric population.

8.6 Renal Impairment

Due to reduced clearance of amphetamines in patients with severe renal impairment (GFR 15 to <30 mL/min/1.73 m²), the recommended dose should be reduced.

Dextroamphetamine saccharate, amphetamine aspartate monohydrate, dextroamphetamine sulfate and amphetamine sulfate extended-release capsules are not recommended in patients with ESRD (GFR <15 mL/min/1.73 m²) [see *Dosage and*

Administration (2.6), Clinical Pharmacology (12.3)].

d-Amphetamine is not dialyzable.

9 DRUG ABUSE AND DEPENDENCE

9.1 Controlled Substance

Dextroamphetamine saccharate, amphetamine aspartate monohydrate, dextroamphetamine sulfate and amphetamine sulfate extended-release capsules contain amphetamine, a Schedule II controlled substance.

9.2 Abuse

Dextroamphetamine saccharate, amphetamine aspartate monohydrate, dextroamphetamine sulfate and amphetamine sulfate extended-release capsules has a high potential for abuse and misuse which can lead to the development of a substance use disorder, including addiction [see *Warnings and Precautions (5.1)*]. Dextroamphetamine saccharate, amphetamine aspartate monohydrate, dextroamphetamine sulfate and amphetamine sulfate extended-release capsules can be diverted for non-medical use into illicit channels or distribution.

Abuse is the intentional non-therapeutic use of a drug, even once, to achieve a desired psychological or physiological effect. Misuse is the intentional use, for therapeutic purposes, of a drug by an individual in a way other than prescribed by a healthcare provider or for whom it was not prescribed. Drug addiction is a cluster of behavioral, cognitive, and physiological phenomena that may include a strong desire to take the drug, difficulties in controlling drug use (e.g., continuing drug use despite harmful consequences, giving a higher priority to drug use than other activities and obligations), and possible tolerance or physical dependence.

Misuse and abuse of amphetamine may cause increased heart rate, respiratory rate, or blood pressure; sweating; dilated pupils; hyperactivity; restlessness; insomnia; decreased appetite; loss of coordination; tremors; flushed skin; vomiting; and/or abdominal pain. Anxiety, psychosis, hostility, aggression, and suicidal or homicidal ideation have also been observed with CNS stimulants abuse and/or misuse. Misuse and abuse of CNS stimulants, including dextroamphetamine saccharate, amphetamine aspartate monohydrate, dextroamphetamine sulfate and amphetamine sulfate extended-release capsules, can result in overdose and death [see *Overdosage (10)*], and this risk is increased with higher doses or unapproved methods of administration, such as snorting or injection.

9.3 Dependence

Physical Dependence

Dextroamphetamine saccharate, amphetamine aspartate monohydrate, dextroamphetamine sulfate and amphetamine sulfate extended-release capsules may produce physical dependence. Physical dependence is a state that develops as a result of physiological adaptation in response to repeated drug use, manifested by withdrawal signs and symptoms after abrupt discontinuation or a significant dose reduction of a drug.

Withdrawal signs and symptoms after abrupt discontinuation or dose reduction following prolonged use of CNS stimulants including dextroamphetamine saccharate, amphetamine aspartate monohydrate, dextroamphetamine sulfate and amphetamine sulfate extended-release capsules include dysphoric mood; depression; fatigue; vivid, unpleasant dreams; insomnia or hypersomnia; increased appetite; and psychomotor retardation or agitation.

Tolerance

Dextroamphetamine saccharate, amphetamine aspartate monohydrate, dextroamphetamine sulfate and amphetamine sulfate extended-release capsules may

produce tolerance. Tolerance is a physiological state characterized by a reduced response to a drug after repeated administration (i.e., a higher dose of a drug is required to produce the same effect that was once obtained at a lower dose).

10 OVERDOSAGE

Clinical Effects of Overdose

Overdose of CNS stimulants is characterized by the following sympathomimetic effects:

- Cardiovascular effects including tachyarrhythmias, and hypertension or hypotension. Vasospasm, myocardial infarction, or aortic dissection may precipitate sudden cardiac death. Takotsubo cardiomyopathy may develop.
- CNS effects including psychomotor agitation, confusion, and hallucinations. Serotonin syndrome, seizures, cerebral vascular accidents, and coma may occur.
- Life-threatening hyperthermia (temperatures greater than 104°F) and rhabdomyolysis may develop.

Overdose Management

Consider the possibility of multiple drug ingestion. The pharmacokinetic profile of dextroamphetamine saccharate, amphetamine aspartate monohydrate, dextroamphetamine sulfate and amphetamine sulfate extended-release capsules should be considered when treating patients with overdose. D-amphetamine is not dialyzable. Consider contacting the Poison Help line (1-800-222-1222) or a medical toxicologist for additional overdose management recommendations.

11 DESCRIPTION

Dextroamphetamine Saccharate, Amphetamine Aspartate Monohydrate, Dextroamphetamine Sulfate and Amphetamine Sulfate Extended-Release Capsules contain mixed salts of a single-entity amphetamine, a CNS stimulant.

Dextroamphetamine Saccharate, Amphetamine Aspartate Monohydrate, Dextroamphetamine Sulfate and Amphetamine Sulfate Extended-Release Capsules contain equal amounts (by weight) of four salts: dextroamphetamine sulfate, amphetamine sulfate, dextroamphetamine saccharate and amphetamine (D, L)-aspartate monohydrate. This results in a 3.1:1 mixture of dextro- to levo-amphetamine base equivalent.

The 5 mg, 10 mg, 15 mg, 20 mg, 25 mg and 30 mg strength extended-release capsules are for oral administration. Dextroamphetamine Saccharate, Amphetamine Aspartate Monohydrate, Dextroamphetamine Sulfate and Amphetamine Sulfate Extended-Release Capsules contain two types of drug-containing beads (immediate-release and delayed-release) which prolong the release of amphetamine compared to the Dextroamphetamine Saccharate, Amphetamine Aspartate Monohydrate, Dextroamphetamine Sulfate and Amphetamine Sulfate (immediate-release) tablet formulation.

Each capsule contains:

Capsule Strength	5 mg	10 mg	15 mg	20 mg	25 mg	30 mg
Dextroamphetamine Saccharate	1.25 mg	2.5 mg	3.75 mg	5 mg	6.25 mg	7.5 mg
Amphetamine (D, L)-Aspartate Monohydrate	1.25 mg	2.5 mg	3.75 mg	5 mg	6.25 mg	7.5 mg
Dextroamphetamine Sulfate	1.25 mg	2.5 mg	3.75 mg	5 mg	6.25 mg	7.5 mg
Amphetamine Sulfate	1.25 mg	2.5 mg	3.75 mg	5 mg	6.25 mg	7.5 mg

Amphetamine Sulfate	1.25 mg	mg	mg	mg	mg	mg
Total amphetamine base equivalence	3.1 mg	6.3 mg	9.4 mg	12.5 mg	15.6 mg	18.8 mg
d-amphetamine base equivalence	2.4 mg	4.7 mg	7.1 mg	9.5 mg	11.9 mg	14.2 mg
l-amphetamine base equivalence	0.75 mg	1.5 mg	2.3 mg	3.0 mg	3.8 mg	4.5 mg

Inactive Ingredients and Colors

The inactive ingredients in Dextroamphetamine Saccharate, Amphetamine Aspartate Monohydrate, Dextroamphetamine Sulfate and Amphetamine Sulfate Extended-Release Capsules include: corn starch, gelatin, hypromellose, methacrylic acid copolymer, opadry beige, opadry white, sucrose, talc, and triethyl citrate. Gelatin capsules contain edible inks, kosher gelatin, and titanium dioxide. The 5 mg capsules also contain FD&C Blue #2. The 10 mg and 15 mg capsules contain FD&C Blue #1 and FD&C Red #40. The 20 mg, 25 mg, and 30 mg capsules also contain red iron oxide and yellow iron oxide. The black imprinting ink contains ferrousferrous oxide and shellac, and may also contain ammonia solution and potassium hydroxide, or D&C Yellow #10 aluminum lake, FD&C Blue #1 aluminum lake, FD&C Blue #2 aluminum lake, and FD&C Red #40 aluminum lake.

12 CLINICAL PHARMACOLOGY

12.1 Mechanism of Action

Amphetamines are non-catecholamine sympathomimetic amines with CNS stimulant activity. The mode of therapeutic action in ADHD is not known.

12.2 Pharmacodynamics

Amphetamines block the reuptake of norepinephrine and dopamine into the presynaptic neuron and increase the release of these monoamines into the extraneuronal space.

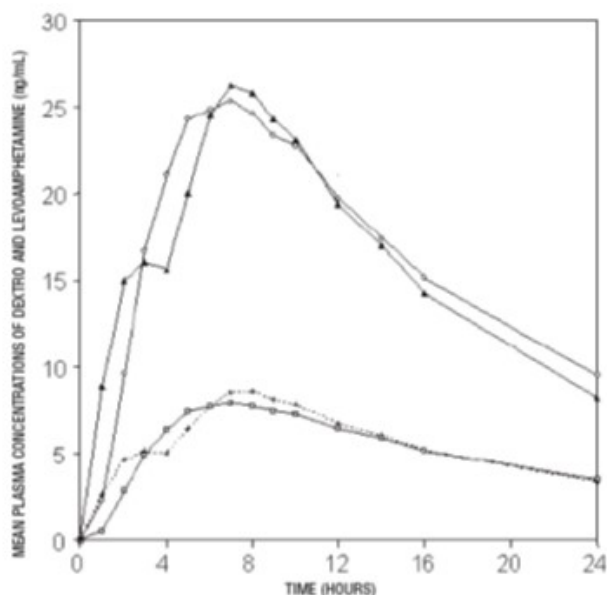
12.3 Pharmacokinetics

Pharmacokinetic studies of dextroamphetamine saccharate, amphetamine aspartate monohydrate, dextroamphetamine sulfate and amphetamine sulfate extended-release capsules have been conducted in healthy adult and pediatric (children aged 6 to 12 yrs) subjects, adolescent (13 to 17 yrs), and children with ADHD. Both dextroamphetamine saccharate, amphetamine aspartate monohydrate, dextroamphetamine sulfate and amphetamine sulfate (immediate-release) tablets and dextroamphetamine saccharate, amphetamine aspartate monohydrate, dextroamphetamine sulfate and amphetamine sulfate extended-release capsules contain d-amphetamine and l-amphetamine salts in the ratio of 3:1. Following administration of dextroamphetamine saccharate, amphetamine aspartate monohydrate, dextroamphetamine sulfate and amphetamine sulfate (immediate-release), the peak plasma concentrations occurred in about 3 hours for both d-amphetamine and l-amphetamine.

The time to reach maximum plasma concentration (T_{max}) for dextroamphetamine saccharate, amphetamine aspartate monohydrate, dextroamphetamine sulfate and amphetamine sulfate extended-release capsules is about 7 hours, which is about 4 hours longer compared to dextroamphetamine saccharate, amphetamine aspartate monohydrate, dextroamphetamine sulfate and amphetamine sulfate (immediate-release). This is consistent with the extended-release nature of the product.

Figure 1: Mean d-amphetamine and l-amphetamine Plasma Concentrations Following Administration of Dextroamphetamine Saccharate, Amphetamine Aspartate Monohydrate, Dextroamphetamine Sulfate and Amphetamine Sulfate Extended-Release Capsules 20 mg (8 am) and Dextroamphetamine Saccharate, Amphetamine Aspartate Monohydrate, Dextroamphetamine

Sulfate and Amphetamine Sulfate (immediate-release) 10 mg Twice Daily (8 am and 12 noon) in the Fed State.



DEXTROAMPHETAMINE		LEVOAMPHETAMINE	
—○—	Dextroamphetamine saccharate, amphetamine aspartate monohydrate, dextroamphetamine sulfate and amphetamine sulfate extended-release capsules, 20 mg qd.	—○—	Dextroamphetamine saccharate, amphetamine aspartate monohydrate, dextroamphetamine sulfate and amphetamine sulfate extended-release capsules, 20 mg qd.
—●—	Dextroamphetamine saccharate, amphetamine aspartate monohydrate, dextroamphetamine sulfate and amphetamine sulfate, 10 mg bid	---●---	Dextroamphetamine saccharate, amphetamine aspartate monohydrate, dextroamphetamine sulfate and amphetamine sulfate, 10 mg bid

A single dose of dextroamphetamine saccharate, amphetamine aspartate monohydrate, dextroamphetamine sulfate and amphetamine sulfate 20 mg extended-release capsules provided comparable plasma concentration profiles of both d-amphetamine and l-amphetamine to dextroamphetamine saccharate, amphetamine aspartate monohydrate, dextroamphetamine sulfate and amphetamine sulfate (immediate-release) 10 mg twice daily administered 4 hours apart.

The mean elimination half-life for d-amphetamine is 10 hours in adults; 11 hours in adolescents aged 13 to 17 years and weighing less than or equal to 75 kg/165 lbs; and 9 hours in children aged 6 to 12 years. For the l-amphetamine, the mean elimination half-life in adults is 13 hours; 13 to 14 hours in adolescents; and 11 hours in children aged 6 to 12 years. On a mg/kg body weight basis, children have a higher clearance than adolescents or adults (see Special Populations below).

Dextroamphetamine saccharate, amphetamine aspartate monohydrate, dextroamphetamine sulfate and amphetamine sulfate extended-release capsules demonstrates linear pharmacokinetics over the dose range of 20 to 60 mg in adults and adolescents weighing greater than 75 kg/165 lbs, over the dose range of 10 to 40 mg in adolescents weighing less than or equal to 75 kg/165 lbs, and 5 to 30 mg in children aged 6 to 12 years. There is no unexpected accumulation at steady state in children.

Food does not affect the extent of absorption of d-amphetamine and l-amphetamine, but prolongs T_{max} by 2.5 hours (from 5.2 hrs at fasted state to 7.7 hrs after a high-fat meal) for d-amphetamine and 2.7 hours (from 5.6 hrs at fasted state to 8.3 hrs after a high-fat meal) for l-amphetamine after administration of dextroamphetamine saccharate, amphetamine aspartate monohydrate, dextroamphetamine sulfate and amphetamine sulfate extended-release capsules 30 mg. Opening the capsule and sprinkling the

contents on applesauce results in comparable absorption to the intact capsule taken in the fasted state. Equal doses of dextroamphetamine saccharate, amphetamine aspartate monohydrate, dextroamphetamine sulfate and amphetamine sulfate extended-release capsules strengths are bioequivalent.

Metabolism and Excretion

Amphetamine is reported to be oxidized at the 4 position of the benzene ring to form 4-hydroxyamphetamine, or on the side chain α or β carbons to form alpha-hydroxyamphetamine or norephedrine, respectively. Norephedrine and 4-hydroxyamphetamine are both active and each is subsequently oxidized to form 4-hydroxy-norephedrine. Alpha-hydroxyamphetamine undergoes deamination to form phenylacetone, which ultimately forms benzoic acid and its glucuronide and the glycine conjugate hippuric acid. Although the enzymes involved in amphetamine metabolism have not been clearly defined, CYP2D6 is known to be involved with formation of 4-hydroxyamphetamine. Since CYP2D6 is genetically polymorphic, population variations in amphetamine metabolism are a possibility.

Amphetamine is known to inhibit monoamine oxidase, whereas the ability of amphetamine and its metabolites to inhibit various P450 isozymes and other enzymes has not been adequately elucidated. *In vitro* experiments with human microsomes indicate minor inhibition of CYP2D6 by amphetamine and minor inhibition of CYP1A2, 2D6, and 3A4 by one or more metabolites. However, due to the probability of auto-inhibition and the lack of information on the concentration of these metabolites relative to *in vivo* concentrations, no predications regarding the potential for amphetamine or its metabolites to inhibit the metabolism of other drugs by CYP isozymes *in vivo* can be made.

With normal urine pHs, approximately half of an administered dose of amphetamine is recoverable in urine as derivatives of alpha-hydroxyamphetamine and approximately another 30 to 40% of the dose is recoverable in urine as amphetamine itself. Since amphetamine has a pKa of 9.9, urinary recovery of amphetamine is highly dependent on pH and urine flow rates. Alkaline urine pHs result in less ionization and reduced renal elimination, and acidic pHs and high flow rates result in increased renal elimination with clearances greater than glomerular filtration rates, indicating the involvement of active secretion. Urinary recovery of amphetamine has been reported to range from 1 to 75%, depending on urinary pH, with the remaining fraction of the dose hepatically metabolized. Consequently, both hepatic and renal dysfunction have the potential to inhibit the elimination of amphetamine and result in prolonged exposures. In addition, drugs that effect urinary pH are known to alter the elimination of amphetamine, and any decrease in amphetamine's metabolism that might occur due to drug interactions or genetic polymorphisms is more likely to be clinically significant when renal elimination is decreased [see *Drug Interactions (7)*].

Special Populations

Comparison of the pharmacokinetics of d- and l-amphetamine after oral administration of dextroamphetamine saccharate, amphetamine aspartate monohydrate, dextroamphetamine sulfate and amphetamine sulfate extended-release capsules in children (6 to 12 years) and adolescent (13 to 17 years) ADHD patients and healthy adult volunteers indicates that body weight is the primary determinant of apparent differences in the pharmacokinetics of d- and l-amphetamine across the age range. Systemic exposure measured by area under the curve to infinity (AUC_{∞}) and maximum plasma concentration (C_{max}) decreased with increases in body weight, while oral volume of distribution (V_z/F), oral clearance (CL/F), and elimination half-life ($t_{1/2}$) increased with increases in body weight.

Pediatric Patients

On a mg/kg weight basis, children eliminated amphetamine faster than adults. The elimination half-life ($t_{1/2}$) is approximately 1 hour shorter for d-amphetamine and 2 hours shorter for l-amphetamine in children than in adults. However, children had higher systemic exposure to amphetamine (C_{max} and AUC) than adults for a given dose of

dextroamphetamine saccharate, amphetamine aspartate monohydrate, dextroamphetamine sulfate and amphetamine sulfate extended-release capsules, which was attributed to the higher dose administered to children on a mg/kg body weight basis compared to adults. Upon dose normalization on a mg/kg basis, children showed 30% less systemic exposure compared to adults.

Gender

Systemic exposure to amphetamine was 20 to 30% higher in women (N=20) than in men (N=20) due to the higher dose administered to women on a mg/kg body weight basis. When the exposure parameters (C_{max} and AUC) were normalized by dose (mg/kg), these differences diminished. Age and gender had no direct effect on the pharmacokinetics of d- and l-amphetamine.

Race

Formal pharmacokinetic studies for race have not been conducted. However, amphetamine pharmacokinetics appeared to be comparable among Caucasians (N=33), Blacks (N=8), and Hispanics (N=10).

Patients with Renal Impairment

The effect of renal impairment on d- and l-amphetamine after administration of dextroamphetamine saccharate, amphetamine aspartate monohydrate, dextroamphetamine sulfate and amphetamine sulfate extended-release capsules has not been studied. The impact of renal impairment on the disposition of amphetamine is expected to be similar between oral administration of lisdexamfetamine and dextroamphetamine saccharate, amphetamine aspartate monohydrate, dextroamphetamine sulfate and amphetamine sulfate extended-release capsules.

In a pharmacokinetic study of lisdexamfetamine in adult subjects with normal and impaired renal function, mean d-amphetamine clearance was reduced from 0.7 L/hr/kg in normal subjects to 0.4 L/hr/kg in subjects with severe renal impairment (GFR 15 to <30 mL/min/1.73 m²). Dialysis did not significantly affect the clearance of d-amphetamine [see *Use in Specific Populations* (8.6)].

13 NONCLINICAL TOXICOLOGY

13.1 Carcinogenesis, Mutagenesis, Impairment of Fertility

Carcinogenesis

No evidence of carcinogenicity was found in studies in which d, l-amphetamine (enantiomer ratio of 1:1) was administered to mice and rats in the diet for 2 years at doses of up to 30 mg/kg/day in male mice, 19 mg/kg/day in female mice, and 5 mg/kg/day in male and female rats. These doses are approximately 2.4, 1.5, and 0.8 times, respectively, the maximum recommended human dose of 30 mg/day given to children, on a mg/m² basis.

Mutagenesis

Amphetamine, in the enantiomer ratio d- to l- ratio of 3:1, was not clastogenic in the mouse bone marrow micronucleus test *in vivo* and was negative when tested in the *E. coli* component of the Ames test *in vitro*. d, l-Amphetamine (1:1 enantiomer ratio) has been reported to produce a positive response in the mouse bone marrow micronucleus test, an equivocal response in the Ames test, and negative responses in the *in vitro* sister chromatid exchange and chromosomal aberration assays.

Impairment of Fertility

Amphetamine, in the enantiomer ratio d- to l- ratio of 3:1, did not adversely affect fertility or early embryonic development in the rat at doses of up to 20 mg/kg/day (approximately 8 times the maximum recommended human dose of 20 mg/day given to adolescents, on a mg/m² basis).

13.2 Animal Toxicology and/or Pharmacology

Acute administration of high doses of amphetamine (d- or d, l-) has been shown to produce long-lasting neurotoxic effects, including irreversible nerve fiber damage in rodents. The significance of these findings to humans is unknown.

14 CLINICAL STUDIES

Pediatric Patients

A double-blind, randomized, placebo-controlled, parallel-group study was conducted in children aged 6 to 12 (N=584) who met DSM-IV[®] criteria for ADHD (either the combined type or the hyperactive-impulsive type). Patients were randomized to fixed-dose treatment groups receiving final doses of 10, 20, or 30 mg of dextroamphetamine saccharate, amphetamine aspartate monohydrate, dextroamphetamine sulfate and amphetamine sulfate extended-release capsules or placebo once daily in the morning for three weeks. Significant improvements in patient behavior, based upon teacher ratings of attention and hyperactivity, were observed for all dextroamphetamine saccharate, amphetamine aspartate monohydrate, dextroamphetamine sulfate and amphetamine sulfate extended-release capsules doses compared to patients who received placebo, for all three weeks, including the first week of treatment, when all dextroamphetamine saccharate, amphetamine aspartate monohydrate, dextroamphetamine sulfate and amphetamine sulfate extended-release capsules subjects were receiving a dose of 10 mg/day. Patients who received dextroamphetamine saccharate, amphetamine aspartate monohydrate, dextroamphetamine sulfate and amphetamine sulfate extended-release capsules showed behavioral improvements in both morning and afternoon assessments compared to patients on placebo.

In a classroom analogue study, patients (N=51) receiving fixed doses of 10, 20, or 30 mg dextroamphetamine saccharate, amphetamine aspartate monohydrate, dextroamphetamine sulfate and amphetamine sulfate extended-release capsules demonstrated statistically significant improvements in teacher-rated behavior and performance measures, compared to patients treated with placebo.

A double-blind, randomized, multicenter, parallel-group, placebo-controlled study was conducted in adolescents aged 13 to 17 (N=327) who met DSM-IV[®] criteria for ADHD. The primary cohort of patients (n=287, weighing \leq 75 kg/165 lbs) were randomized to fixed-dose treatment groups and received four weeks of treatment. Patients were randomized to receive final doses of 10, 20, 30, and 40 mg dextroamphetamine saccharate, amphetamine aspartate monohydrate, dextroamphetamine sulfate and amphetamine sulfate extended-release capsules or placebo once daily in the morning. Patients randomized to doses greater than 10 mg were titrated to their final doses by 10 mg each week. The secondary cohort consisted of 40 subjects weighing $>$ 75 kg/165 lbs who were randomized to fixed-dose treatment groups receiving final doses of 50 and 60 mg dextroamphetamine saccharate, amphetamine aspartate monohydrate, dextroamphetamine sulfate and amphetamine sulfate extended-release capsules or placebo once daily in the morning for 4 weeks. The primary efficacy variable was the Attention Deficit Hyperactivity Disorder-Rating Scale IV (ADHD-RS-IV) total score for the primary cohort. The ADHD-RS-IV is an 18-item scale that measures the core symptoms of ADHD. Improvements in the primary cohort were statistically significantly greater in all four primary cohort active treatment groups (dextroamphetamine saccharate, amphetamine aspartate monohydrate, dextroamphetamine sulfate and amphetamine sulfate extended-release capsules 10 mg, 20 mg, 30 mg, and 40 mg) compared with the placebo group. There was not adequate evidence that doses greater than 20 mg/day conferred additional benefit.

Adult Patients

A double-blind, randomized, placebo-controlled, parallel-group study was conducted in adults (N=255) who met DSM-IV[®] criteria for ADHD. Patients were randomized to fixed-dose treatment groups receiving final doses of 20, 40, or 60 mg of dextroamphetamine

saccharate, amphetamine aspartate monohydrate, dextroamphetamine sulfate and amphetamine sulfate extended-release capsules or placebo once daily in the morning for four weeks. Significant improvements, measured with the Attention Deficit Hyperactivity Disorder-Rating Scale (ADHD-RS), an 18-item scale that measures the core symptoms of ADHD, were observed at endpoint for all dextroamphetamine saccharate, amphetamine aspartate monohydrate, dextroamphetamine sulfate and amphetamine sulfate extended-release capsules doses compared to patients who received placebo for all four weeks. There was not adequate evidence that doses greater than 20 mg/day conferred additional benefit.

16 HOW SUPPLIED/STORAGE AND HANDLING

Dextroamphetamine Saccharate, Amphetamine Aspartate Monohydrate, Dextroamphetamine Sulfate and Amphetamine Sulfate Extended-Release Capsules 5 mg - Size 3 capsule with powder blue opaque cap and natural body imprinted with "Lannett" and "0790" in black and filled with pellets.

100 count bottle NDC 51407-557-01

Dextroamphetamine Saccharate, Amphetamine Aspartate Monohydrate, Dextroamphetamine Sulfate and Amphetamine Sulfate Extended-Release Capsules 10 mg - Size 3 capsule with powder blue opaque cap and blue body imprinted with "Lannett" and "0791" in black and filled with pellets.

100 count bottle NDC 51407-558-01

Dextroamphetamine Saccharate, Amphetamine Aspartate Monohydrate, Dextroamphetamine Sulfate and Amphetamine Sulfate Extended-Release Capsules 15 mg - Size 2 capsule with white opaque cap and blue body imprinted with "Lannett" and "0792" in black and filled with pellets.

100 count bottle NDC 51407-559-01

Dextroamphetamine Saccharate, Amphetamine Aspartate Monohydrate, Dextroamphetamine Sulfate and Amphetamine Sulfate Extended-Release Capsules 20 mg - Size 2 capsule with orange opaque cap and light orange opaque body imprinted with "Lannett" and "0793" in black and filled with pellets.

100 count bottle NDC 51407-560-01

Dextroamphetamine Saccharate, Amphetamine Aspartate Monohydrate, Dextroamphetamine Sulfate and Amphetamine Sulfate Extended-Release Capsules 25 mg - Size 1 capsule with white opaque cap and light orange opaque body imprinted with "Lannett" and "0794" in black and filled with pellets.

100 count bottle NDC 51407-561-01

Dextroamphetamine Saccharate, Amphetamine Aspartate Monohydrate, Dextroamphetamine Sulfate and Amphetamine Sulfate Extended-Release Capsules 30 mg - Size 1 capsule with orange opaque cap and natural body imprinted with "Lannett" and "0795" in black and filled with pellets.

100 count bottle NDC 51407-562-01

Dispense in a tight, light-resistant container as defined in the USP.

Store at room temperature, 20°C to 25°C (68°F to 77°F). Excursions permitted to 15°C to 30°C (59°F to 86°F) [see USP Controlled Room Temperature].

17 PATIENT COUNSELING INFORMATION

Advise the patient to read the FDA-approved patient labeling (Medication Guide).

Abuse, Misuse, and Addiction

Educate patients and their families about the risks of abuse, misuse, and addiction of dextroamphetamine saccharate, amphetamine aspartate monohydrate, dextroamphetamine sulfate and amphetamine sulfate extended-release capsules, which can lead to overdose and death, and proper disposal of any unused drug [see *Warnings and Precautions (5.1)*, *Drug Abuse and Dependence (9.2)*, *Overdosage (10)*]. Advise patients to store dextroamphetamine saccharate, amphetamine aspartate monohydrate, dextroamphetamine sulfate and amphetamine sulfate extended-release capsules in a safe place, preferably locked, and instruct patients to not give dextroamphetamine saccharate, amphetamine aspartate monohydrate, dextroamphetamine sulfate and amphetamine sulfate extended-release capsules to anyone else.

Risks to Patients with Serious Cardiac Disease

Advise patients that there are potential risks to patients with serious cardiac disease, including sudden death, with dextroamphetamine saccharate, amphetamine aspartate monohydrate, dextroamphetamine sulfate and amphetamine sulfate extended-release capsules use. Instruct patients to contact a healthcare provider immediately if they develop symptoms such as exertional chest pain, unexplained syncope, or other symptoms suggestive of cardiac disease [see *Warnings and Precautions (5.2)*].

Increased Blood Pressure and Heart Rate

Advise patients that dextroamphetamine saccharate, amphetamine aspartate monohydrate, dextroamphetamine sulfate and amphetamine sulfate extended-release capsules can cause elevations in blood pressure and heart rate [see *Warnings and Precautions (5.3)*].

Psychiatric Adverse Reactions

Prior to initiating treatment with dextroamphetamine saccharate, amphetamine aspartate monohydrate, dextroamphetamine sulfate and amphetamine sulfate extended-release capsules, adequately screen patients with comorbid depressive symptoms to determine if they are at risk for bipolar disorder. Such screening should include a detailed psychiatric history, including a family history of suicide, bipolar disorder, and/or depression. Additionally, dextroamphetamine saccharate, amphetamine aspartate monohydrate, dextroamphetamine sulfate and amphetamine sulfate extended-release capsules therapy at usual doses may cause treatment-emergent psychotic or manic symptoms in patients without prior history of psychotic symptoms or mania [see *Warnings and Precautions (5.4)*].

Circulation Problems in Fingers and Toes [Peripheral Vasculopathy, Including Raynaud's Phenomenon]

Instruct patients beginning treatment with dextroamphetamine saccharate, amphetamine aspartate monohydrate, dextroamphetamine sulfate and amphetamine sulfate extended-release capsules about the risk of peripheral vasculopathy, including Raynaud's phenomenon, and in associated signs and symptoms: fingers or toes may feel numb, cool, painful, and/or may change color from pale, to blue, to red. Instruct patients to report to their physician any new numbness, pain, skin color change, or sensitivity to temperature in fingers or toes. Instruct patients to call their physician immediately with any signs of unexplained wounds appearing on fingers or toes while taking dextroamphetamine saccharate, amphetamine aspartate monohydrate, dextroamphetamine sulfate and amphetamine sulfate extended-release capsules. Further clinical evaluation (e.g., rheumatology referral) may be appropriate for certain patients [see *Warnings and Precautions (5.7)*].

Serotonin Syndrome

Caution patients about the risk of serotonin syndrome with concomitant use of dextroamphetamine saccharate, amphetamine aspartate monohydrate, dextroamphetamine sulfate and amphetamine sulfate extended-release capsules and other serotonergic drugs including SSRIs, SNRIs, triptans, tricyclic antidepressants, fentanyl, lithium, tramadol, tryptophan, buspirone, St. John's Wort, and with drugs that impair metabolism of serotonin (in particular MAOIs, both those intended to treat

psychiatric disorders and also others such as linezolid) [see *Contraindications (4), Warnings and Precautions (5.8), Drug Interactions (7.1)*]. Advise patients to contact their healthcare provider or report to the emergency room if they experience signs or symptoms of serotonin syndrome.

Concomitant Medications

Advise patients to notify their physicians if they are taking, or plan to take, any prescription or over-the-counter drugs because there is a potential for interactions [see *Drug Interactions (7.1)*].

Growth

Monitor growth in children during treatment with dextroamphetamine saccharate, amphetamine aspartate monohydrate, dextroamphetamine sulfate and amphetamine sulfate extended-release capsules, and patients who are not growing or gaining weight as expected may need to have their treatment interrupted [see *Warnings and Precautions (5.5)*].

Motor and Verbal Tics, and Worsening of Tourette's Syndrome

Advise patients that motor and verbal tics and worsening of Tourette's syndrome may occur during treatment with dextroamphetamine saccharate, amphetamine aspartate monohydrate, dextroamphetamine sulfate and amphetamine sulfate extended-release capsules. Instruct patients to notify their healthcare provider if emergence of new tics or worsening of tics or Tourette's syndrome occurs [see *Warnings and Precautions (5.9)*].

Pregnancy Registry

Advise patients that there is a pregnancy exposure registry that monitors pregnancy outcomes in women exposed to dextroamphetamine saccharate, amphetamine aspartate monohydrate, dextroamphetamine sulfate and amphetamine sulfate extended-release capsules during pregnancy [see *Use in Specific Populations (8.1)*].

Pregnancy

Advise patients to notify their healthcare provider if they become pregnant or intend to become pregnant during treatment with dextroamphetamine saccharate, amphetamine aspartate monohydrate, dextroamphetamine sulfate and amphetamine sulfate extended-release capsules. Advise patients of the potential fetal effects from the use of dextroamphetamine saccharate, amphetamine aspartate monohydrate, dextroamphetamine sulfate and amphetamine sulfate extended-release capsules during pregnancy [see *Use in Specific Populations (8.1)*].

Lactation

Advise women not to breastfeed if they are taking dextroamphetamine saccharate, amphetamine aspartate monohydrate, dextroamphetamine sulfate and amphetamine sulfate extended-release capsules [see *Use in Specific Populations (8.2)*].

For more information call 1-844-834-0530.

All brand names are the trademarks of their respective owners.

Distributed by:

Lannett Company, Inc.

Philadelphia, PA 19136

Dispense with Medication Guide available at: www.lannett.com/med-guide/dextro-amp-caps

CIA79877D

Rev. 10/2023

Marketed by:

MEDICATION GUIDE

Dispense with Medication Guide available at: www.lannett.com/med-guide/dextro-amp-caps

Dextroamphetamine Saccharate, Amphetamine Aspartate Monohydrate, Dextroamphetamine Sulfate and Amphetamine Sulfate (DEX-troe-am-FET-uh-meen SACK-uh-rate, am-FET-uh-meen ass-PAR-tate MAN-no-HIGH-drate, DEX-troe-am-FET-uh-meen SULL-fate and am-FET-uh-meen SULL-fate) (mixed salts of a single-entity amphetamine product) Extended-Release Capsules, CII

What is the most important information I should know about dextroamphetamine saccharate, amphetamine aspartate monohydrate, dextroamphetamine sulfate and amphetamine sulfate extended-release capsules?

Dextroamphetamine saccharate, amphetamine aspartate monohydrate, dextroamphetamine sulfate and amphetamine sulfate extended-release capsules may cause serious side effects, including:

- **Abuse, misuse, and addiction.** Dextroamphetamine saccharate, amphetamine aspartate monohydrate, dextroamphetamine sulfate and amphetamine sulfate extended-release capsules has a high chance for abuse and misuse and may lead to substance use problems, including addiction. Misuse and abuse of dextroamphetamine saccharate, amphetamine aspartate monohydrate, dextroamphetamine sulfate and amphetamine sulfate extended-release capsules, other amphetamine containing medicines, and methylphenidate containing medicines, can lead to overdose and death. The risk of overdose and death is increased with higher doses of dextroamphetamine saccharate, amphetamine aspartate monohydrate, dextroamphetamine sulfate and amphetamine sulfate extended-release capsules or when it is used in ways that are not approved, such as snorting or injection.
 - Your healthcare provider should check you or your child's risk for abuse, misuse, and addiction before starting treatment with dextroamphetamine saccharate, amphetamine aspartate monohydrate, dextroamphetamine sulfate and amphetamine sulfate extended-release capsules and will monitor you or your child during treatment.
 - Dextroamphetamine saccharate, amphetamine aspartate monohydrate, dextroamphetamine sulfate and amphetamine sulfate extended-release capsules may lead to physical dependence after prolonged use, even if taken as directed by your healthcare provider.
 - Do not give dextroamphetamine saccharate, amphetamine aspartate monohydrate, dextroamphetamine sulfate and amphetamine sulfate extended-release capsules to anyone else. See "**What are dextroamphetamine saccharate, amphetamine aspartate monohydrate, dextroamphetamine sulfate and amphetamine sulfate extended-release capsules?**" for more information.
 - Keep dextroamphetamine saccharate, amphetamine aspartate monohydrate, dextroamphetamine sulfate and amphetamine sulfate extended-release capsules in a safe place and properly dispose of any unused medicine. See "**How should I store dextroamphetamine saccharate, amphetamine aspartate monohydrate, dextroamphetamine sulfate and amphetamine sulfate extended-release capsules?**" for more information.

Tell your healthcare provider if you or your child have ever abused or been dependent on alcohol, prescription medicines, or street drugs.

- **Risks for people with serious heart disease.** Sudden death has happened in people who have heart defects or other serious heart disease.

Your healthcare provider should check you or your child carefully for heart problems before starting treatment with dextroamphetamine saccharate, amphetamine aspartate monohydrate, dextroamphetamine sulfate and amphetamine sulfate extended-release capsules. Tell your healthcare provider if you or your child have any heart problems, heart disease, or heart defects.

Call your healthcare provider or go to the nearest hospital emergency room right away if you

or your child has any signs of heart problems such as chest pain, shortness of breath, or fainting during treatment with dextroamphetamine saccharate, amphetamine aspartate monohydrate, dextroamphetamine sulfate and amphetamine sulfate extended-release capsules.

- Increased blood pressure and heart rate.

Your healthcare provider should check you or your child's blood pressure and heart rate regularly during treatment with dextroamphetamine saccharate, amphetamine aspartate monohydrate, dextroamphetamine sulfate and amphetamine sulfate extended-release capsules.

- Mental (psychiatric) problems, including:
 - new or worse behavior or thought problems
 - new or worse bipolar illness
 - new psychotic symptoms (such as hearing voices, or seeing or believing things that are not real) or new manic symptoms

Tell your healthcare provider about any mental problems you or your child have or about a family history of suicide, bipolar illness, or depression.

Call your healthcare provider right away if you or your child have any new or worsening mental symptoms or problems during treatment with dextroamphetamine saccharate, amphetamine aspartate monohydrate, dextroamphetamine sulfate and amphetamine sulfate extended-release capsules, especially hearing voices, seeing or believing things that are not real, or new manic symptoms.

What are dextroamphetamine saccharate, amphetamine aspartate monohydrate, dextroamphetamine sulfate and amphetamine sulfate extended-release capsules?

Dextroamphetamine saccharate, amphetamine aspartate monohydrate, dextroamphetamine sulfate and amphetamine sulfate extended-release capsules are a central nervous system (CNS) stimulant prescription medicine used for the treatment of Attention Deficit Hyperactivity Disorder (ADHD) in adults and children 6 years of age and older. Dextroamphetamine saccharate, amphetamine aspartate monohydrate, dextroamphetamine sulfate and amphetamine sulfate extended-release capsules may help increase attention and decrease impulsiveness and hyperactivity in people with ADHD.

It is not known if dextroamphetamine saccharate, amphetamine aspartate monohydrate, dextroamphetamine sulfate and amphetamine sulfate extended-release capsules are safe and effective in children under 6 years of age.

Dextroamphetamine saccharate, amphetamine aspartate monohydrate, dextroamphetamine sulfate and amphetamine sulfate extended-release capsules are a federally controlled substance (CII) because it contains amphetamine that can be a target for people who abuse prescription medicines or street drugs. Keep dextroamphetamine saccharate, amphetamine aspartate monohydrate, dextroamphetamine sulfate and amphetamine sulfate extended-release capsules in a safe place to protect it from theft. Never give your dextroamphetamine saccharate, amphetamine aspartate monohydrate, dextroamphetamine sulfate and amphetamine sulfate extended-release capsules to anyone else because it may cause death or harm them. Selling or giving away dextroamphetamine saccharate, amphetamine aspartate monohydrate, dextroamphetamine sulfate and amphetamine sulfate extended-release capsules may harm others and is against the law.

Do not take dextroamphetamine saccharate, amphetamine aspartate monohydrate, dextroamphetamine sulfate and amphetamine sulfate extended-release capsules if you or your child:

- are taking or have taken within the past 14 days, a medicine used to treat depression called a monoamine oxidase inhibitor (MAOI), including the antibiotic linezolid or the intravenous medicine methylene blue
- are allergic to amphetamine products or any of the ingredients in dextroamphetamine saccharate, amphetamine aspartate monohydrate, dextroamphetamine sulfate and amphetamine sulfate extended-release capsules. See the end of this Medication Guide for a complete list of ingredients in dextroamphetamine saccharate, amphetamine aspartate monohydrate, dextroamphetamine sulfate and amphetamine sulfate extended-release capsules.

Before taking dextroamphetamine saccharate, amphetamine aspartate monohydrate, dextroamphetamine sulfate and amphetamine sulfate extended-release capsules tell your healthcare provider about all of your or your child's medical conditions, including if you or your child:

- have heart problems, heart disease, heart defects, or high blood pressure
- have mental problems including psychosis, mania, bipolar illness, or depression, or have a family history of suicide, bipolar illness, or depression
- have kidney problems
- have seizures or have had an abnormal brain wave test (EEG)
- have circulation problems in fingers and toes
- have or had repeated movements or sounds (tics) or Tourette's syndrome, or have a family history of tics or Tourette's syndrome
- are pregnant or plan to become pregnant. It is not known if dextroamphetamine saccharate, amphetamine aspartate monohydrate, dextroamphetamine sulfate and amphetamine sulfate extended-release capsules will harm the unborn baby. Tell your healthcare provider if you or your child become pregnant during treatment with dextroamphetamine saccharate, amphetamine aspartate monohydrate, dextroamphetamine sulfate and amphetamine sulfate extended-release capsules.
 - There is a pregnancy registry for females who are exposed to dextroamphetamine saccharate, amphetamine aspartate monohydrate, dextroamphetamine sulfate and amphetamine sulfate extended-release capsules during pregnancy. The purpose of the registry is to collect information about the health of females exposed to dextroamphetamine saccharate, amphetamine aspartate monohydrate, dextroamphetamine sulfate and amphetamine sulfate extended-release capsules and their baby. If you or your child becomes pregnant during treatment with dextroamphetamine saccharate, amphetamine aspartate monohydrate, dextroamphetamine sulfate and amphetamine sulfate extended-release capsules, talk to your healthcare provider about registering with the National Pregnancy Registry of Psychostimulants at 1-866-961-2388 or visit online at <https://womensmentalhealth.org/clinical-and-research-programs/pregnancyregistry/othermedications/>.
- are breastfeeding or plan to breastfeed. Dextroamphetamine saccharate, amphetamine aspartate monohydrate, dextroamphetamine sulfate and amphetamine sulfate extended-release capsules pass into breast milk. You or your child should not breastfeed during treatment with dextroamphetamine saccharate, amphetamine aspartate monohydrate, dextroamphetamine sulfate and amphetamine sulfate extended-release capsules. Talk to your healthcare provider about the best way to feed the baby during treatment with dextroamphetamine saccharate, amphetamine aspartate monohydrate, dextroamphetamine sulfate and amphetamine sulfate extended-release capsules.

Tell your healthcare provider about all of the medicines that you or your child take, including prescription and over-the-counter medicines, vitamins, and herbal supplements.

Dextroamphetamine saccharate, amphetamine aspartate monohydrate, dextroamphetamine sulfate and amphetamine sulfate extended-release capsules and some medicines may interact with each other and cause serious side effects. Sometimes the doses of other medicines will need to be changed during treatment with dextroamphetamine saccharate, amphetamine aspartate monohydrate, dextroamphetamine sulfate and amphetamine sulfate extended-release capsules.

Your healthcare provider will decide if dextroamphetamine saccharate, amphetamine aspartate monohydrate, dextroamphetamine sulfate and amphetamine sulfate extended-release capsules can be taken with other medicines.

Especially tell your healthcare provider if you or your child take:

- selective serotonin reuptake inhibitors (SSRIs)
- medicines used to treat migraine headaches called triptans
- lithium
- tramadol
- buspirone
- serotonin norepinephrine reuptake inhibitors (SNRIs)
- tricyclic antidepressants
- fentanyl
- tryptophan
- St. John's Wort

Know the medicines that you or your child take. Keep a list of your or your child's medicines with you to show your healthcare provider and pharmacist when you or your child get a new medicine.

Do not start any new medicine during treatment with dextroamphetamine saccharate, amphetamine aspartate monohydrate, dextroamphetamine sulfate and amphetamine sulfate

extended-release capsules without talking to your healthcare provider first.

How should dextroamphetamine saccharate, amphetamine aspartate monohydrate, dextroamphetamine sulfate and amphetamine sulfate extended-release capsules be taken?

- Take dextroamphetamine saccharate, amphetamine aspartate monohydrate, dextroamphetamine sulfate and amphetamine sulfate extended-release capsules exactly as prescribed by your or your child's healthcare provider.
- Your healthcare provider may change the dose if needed.
- Take dextroamphetamine saccharate, amphetamine aspartate monohydrate, dextroamphetamine sulfate and amphetamine sulfate extended-release capsules 1 time each day in the morning when you first wake up.
- Dextroamphetamine saccharate, amphetamine aspartate monohydrate, dextroamphetamine sulfate and amphetamine sulfate extended-release capsules can be taken with or without food.
- Swallow dextroamphetamine saccharate, amphetamine aspartate monohydrate, dextroamphetamine sulfate and amphetamine sulfate extended-release capsules whole. If you or your child cannot swallow the capsule whole, open it and sprinkle the medicine on applesauce.
 - Swallow all of the applesauce and medicine mixture right away.
 - **Do not** chew the applesauce and medicine mixture.
 - **Do not** store the applesauce sprinkled with dextroamphetamine saccharate, amphetamine aspartate monohydrate, dextroamphetamine sulfate and amphetamine sulfate extended-release capsules.

If you or your child take too much dextroamphetamine saccharate, amphetamine aspartate monohydrate, dextroamphetamine sulfate and amphetamine sulfate extended-release capsules, call your healthcare provider or Poison Help line at 1-800-222-1222 or go to the nearest hospital emergency room right away.

What are the possible side effects of dextroamphetamine saccharate, amphetamine aspartate monohydrate, dextroamphetamine sulfate and amphetamine sulfate extended-release capsules?

Dextroamphetamine saccharate, amphetamine aspartate monohydrate, dextroamphetamine sulfate and amphetamine sulfate extended-release capsules may cause serious side effects, including:

- See **“What is the most important information I should know about dextroamphetamine saccharate, amphetamine aspartate monohydrate, dextroamphetamine sulfate and amphetamine sulfate extended-release capsules?”**
- **Slowing of growth (height and weight) in children.** Children should have their height and weight checked often during treatment with dextroamphetamine saccharate, amphetamine aspartate monohydrate, dextroamphetamine sulfate and amphetamine sulfate extended-release capsules. Your healthcare provider may stop your child's dextroamphetamine saccharate, amphetamine aspartate monohydrate, dextroamphetamine sulfate and amphetamine sulfate extended-release capsules treatment if they are not growing or gaining weight as expected.
- **Seizures.** Your healthcare provider may stop treatment with dextroamphetamine saccharate, amphetamine aspartate monohydrate, dextroamphetamine sulfate and amphetamine sulfate extended-release capsules if you or your child have a seizure.
- **Circulation problems in fingers and toes (peripheral vasculopathy, including Raynaud's phenomenon). Signs and symptoms may include:**
 - fingers or toes may feel numb, cool, painful
 - fingers or toes may change color from pale, to blue, to red

Tell your healthcare provider if you have or your child have any numbness, pain, skin color change, or sensitivity to temperature in your fingers or toes.

Call your healthcare provider right away if you have or your child have any signs of unexplained wounds appearing on fingers or toes during treatment with dextroamphetamine saccharate, amphetamine aspartate monohydrate, dextroamphetamine sulfate and amphetamine sulfate extended-release capsules.

- **Serotonin syndrome.** This problem may happen when dextroamphetamine saccharate, amphetamine aspartate monohydrate, dextroamphetamine sulfate and amphetamine sulfate extended-release capsules are taken with certain other medicines and may be life-threatening. Stop taking dextroamphetamine saccharate, amphetamine aspartate monohydrate, dextroamphetamine sulfate and amphetamine sulfate extended-release capsules and call your healthcare provider or go to the nearest hospital emergency room right away if you or your child develop any of the following signs and

symptoms of serotonin syndrome:

- agitation, hallucinations, coma, or other changes in mental status
 - problems controlling movements or muscle twitching
 - fast heartbeat
 - seizures
 - loss of coordination
 - confusion
 - dizziness
 - change in blood pressure
 - sweating or fever
 - nausea, vomiting, or diarrhea
 - muscle stiffness or tightness
 - high body temperature (hyperthermia)
- **New or worsening tics or worsening Tourette's Syndrome.** Tell your healthcare provider if you or your child get any new or worsening tics or worsening Tourette's syndrome during treatment with dextroamphetamine saccharate, amphetamine aspartate monohydrate, dextroamphetamine sulfate and amphetamine sulfate extended-release capsules.

The most common side effects of dextroamphetamine saccharate, amphetamine aspartate monohydrate, dextroamphetamine sulfate and amphetamine sulfate extended-release capsules in children ages 6 to 12 include:

- loss of appetite
- trouble sleeping
- stomach (abdominal) pain
- mood swings
- vomiting
- nervousness
- nausea
- fever

The most common side effects of dextroamphetamine saccharate, amphetamine aspartate monohydrate, dextroamphetamine sulfate and amphetamine sulfate extended-release capsules in adolescents ages 13 to 17 include:

- loss of appetite
- trouble sleeping
- stomach (abdominal pain)
- weight loss
- nervousness

The most common side effects of dextroamphetamine saccharate, amphetamine aspartate monohydrate, dextroamphetamine sulfate and amphetamine sulfate extended-release capsules in adults include:

- dry mouth
- loss of appetite
- trouble sleeping
- headache
- weight loss
- nausea
- anxiety
- agitation
- dizziness
- fast heartbeat
- diarrhea
- weakness
- urinary tract infections (UTIs)

These are not all the possible side effects of dextroamphetamine saccharate, amphetamine aspartate monohydrate, dextroamphetamine sulfate and amphetamine sulfate extended-release capsules.

Call your doctor for medical advice about side effects. You may report side effects to FDA at 1-800-FDA-1088.

How should I store dextroamphetamine saccharate, amphetamine aspartate monohydrate, dextroamphetamine sulfate and amphetamine sulfate extended-release capsules?

- Store dextroamphetamine saccharate, amphetamine aspartate monohydrate, dextroamphetamine sulfate and amphetamine sulfate extended-release capsules at room temperature between 68 to 77°F (20 to 25°C).
- Protect dextroamphetamine saccharate, amphetamine aspartate monohydrate, dextroamphetamine sulfate and amphetamine sulfate extended-release capsules from light.
- Store dextroamphetamine saccharate, amphetamine aspartate monohydrate, dextroamphetamine sulfate and amphetamine sulfate extended-release capsules in a safe place, like a locked cabinet.
- Dispose of remaining, unused, or expired dextroamphetamine saccharate, amphetamine aspartate monohydrate, dextroamphetamine sulfate and amphetamine sulfate extended-release capsules by a medicine take-back program at a U.S. Drug Enforcement Administration (DEA) authorized collection site. If no take-back program or DEA authorized collector is available, mix dextroamphetamine saccharate, amphetamine aspartate monohydrate, dextroamphetamine sulfate and amphetamine sulfate extended-release capsules with an undesirable, nontoxic substance such as dirt, cat litter, or used coffee grounds to make it less appealing to children and pets. Place the mixture in a container such as a sealed plastic bag and throw away dextroamphetamine saccharate, amphetamine aspartate monohydrate, dextroamphetamine sulfate and amphetamine sulfate extended-release capsules in the household trash. Visit www.fda.gov/drugdisposal for additional information on disposal of unused medicines.

Keep dextroamphetamine saccharate, amphetamine aspartate monohydrate, dextroamphetamine sulfate and amphetamine sulfate extended-release capsules and all medicines out of the reach of children.

General information about the safe and effective use of dextroamphetamine saccharate, amphetamine aspartate monohydrate, dextroamphetamine sulfate and amphetamine sulfate extended-release capsules.

Medicines are sometimes prescribed for purposes other than those listed in a Medication Guide. Do not use dextroamphetamine saccharate, amphetamine aspartate monohydrate, dextroamphetamine sulfate and amphetamine sulfate extended-release capsules for a condition for which it was not prescribed. Do not give dextroamphetamine saccharate, amphetamine aspartate monohydrate, dextroamphetamine sulfate and amphetamine sulfate extended-release capsules to other people, even if they have the same condition. It may harm them and it is against the law.

You can ask your healthcare provider or pharmacist for information about dextroamphetamine saccharate, amphetamine aspartate monohydrate, dextroamphetamine sulfate and amphetamine sulfate extended-release capsules that is written for healthcare professionals.

What are the ingredients in dextroamphetamine saccharate, amphetamine aspartate monohydrate, dextroamphetamine sulfate and amphetamine sulfate extended-release capsules?

Active Ingredients: dextroamphetamine sulfate, amphetamine sulfate, dextroamphetamine saccharate, and amphetamine aspartate monohydrate

Inactive Ingredients: corn starch, gelatin, hypromellose, methacrylic acid copolymer, opadry beige, opadry white, sucrose, talc, and triethyl citrate. Gelatin capsules contain edible inks, kosher gelatin, and titanium dioxide. The 5 mg capsules also contain FD&C Blue #2. The 10 mg and 15 mg capsules contain FD&C Blue #1 and FD&C Red #40. The 20 mg, 25 mg, and 30 mg capsules also contain red iron oxide and yellow iron oxide. The black imprinting ink contains ferrousferic oxide and shellac, and may also contain ammonia solution and potassium hydroxide, or D&C Yellow #10 aluminum lake, FD&C Blue #1 aluminum lake, FD&C Blue #2 aluminum lake, and FD&C Red #40 aluminum lake.

Distributed by:

Lannett Company, Inc.
Philadelphia, PA 19136

All brand names are the trademarks of their respective owners.

For more information, you may also contact Lannett Company, Inc. (the maker of dextroamphetamine saccharate, amphetamine aspartate monohydrate, dextroamphetamine sulfate and amphetamine sulfate extended-release capsules) at 1-844-834-0530 or visit the website at <http://www.lannett.com>.

Marketed by:

GSMS, Inc.

This Medication Guide has been approved by the U.S. Food and Drug Administration.

CIA79878D

Rev. 10/2023

PRINCIPAL DISPLAY PANEL - 5 mg Capsule Bottle Label

NDC 51407-557-01

Dextroamphetamine Saccharate, Amphetamine Aspartate Monohydrate, Dextroamphetamine Sulfate and Amphetamine Sulfate Extended-Release Capsules (Mixed Salts of A Single-Entity Amphetamine Product)

CII

5 mg

Dispense the Medication Guide provided separately to each patient.

RxOnly

100 Capsules

Each extended-release capsule contains:
Dextroamphetamine Saccharate 1.25 mg,
Amphetamine Aspartate Monohydrate
1.25 mg, Dextroamphetamine Sulfate
1.25 mg, Amphetamine Sulfate 1.25 mg.
Total amphetamine base equivalence 3.1 mg.

**See package insert for complete
prescribing information.**

Store at 20° to 25°C (68° to 77°F);
Excursions 15° to 30°C (59° to 86°F)
[See USP Controlled Room Temperature].
Dispense in tight, light-resistant container
as defined in the USP.

Marketed by: GSMS, Incorporated
Camarillo, CA 93012 USA

Distributed by: Lannett Company, Inc.
Philadelphia, PA 19136

NDC 51407-**557**-01

**Dextroamphetamine Saccharate,
Amphetamine Aspartate Monohydrate,
Dextroamphetamine Sulfate and
Amphetamine Sulfate** **CII**
Extended-Release Capsules
(Mixed Salts of A Single-Entity
Amphetamine Product)

5 mg

**PHARMACIST: Dispense with
Medication Guide to each patient.
Print Medication Guide at: <https://gsms.us/>**

Rx Only
100 Capsules


GSMS[®]
incorporated


N 3 51407-557-01 8



CIB72157A
Rev. 12/22

GTIN:
LOT:
EXP:
SN:

PRINCIPAL DISPLAY PANEL - 10 mg Capsule Bottle Label

NDC 51407-558-01

Dextroamphetamine Saccharate, Amphetamine Aspartate Monohydrate, Dextroamphetamine Sulfate and Amphetamine Sulfate Extended-Release Capsules (Mixed Salts of A Single-Entity Amphetamine Product)

CII

10 mg

Dispense the Medication Guide provided separately to each patient.

RxOnly

100 Capsules

Each extended-release capsule contains:
Dextroamphetamine Saccharate 2.5 mg,
Amphetamine Aspartate Monohydrate
2.5 mg, Dextroamphetamine Sulfate
2.5 mg, Amphetamine Sulfate 2.5 mg.
Total amphetamine base equivalence 6.3 mg.

See package insert for complete
prescribing information.

Store at 20° to 25°C (68° to 77°F);
Excursions 15° to 30°C (59° to 86°F)
[See USP Controlled Room Temperature].
Dispense in tight, light-resistant container
as defined in the USP.

Marketed by: GSMS, Incorporated
Camarillo, CA 93012 USA

Distributed by: Lannett Company, Inc.
Philadelphia, PA 19136

NDC 51407-558-01

**Dextroamphetamine Saccharate,
Amphetamine Aspartate Monohydrate,
Dextroamphetamine Sulfate and
Amphetamine Sulfate** **CII**

Extended-Release Capsules

(Mixed Salts of A Single-Entity
Amphetamine Product)

10 mg

**PHARMACIST: Dispense with
Medication Guide to each patient.**

Print Medication Guide at: <https://gsms.us/>

Rx Only
100 Capsules



CIB72158A
Rev. 12/22

GTIN:
LOT:
EXP:
SN:



PRINCIPAL DISPLAY PANEL - 15 mg Capsule Bottle Label

NDC 51407-559-01

**Dextroamphetamine Saccharate, Amphetamine Aspartate Monohydrate,
Dextroamphetamine Sulfate and Amphetamine Sulfate
Extended-Release Capsules**(Mixed Salts of A Single-Entity Amphetamine Product)

CII

15 mg

Dispense the Medication Guide provided separately to each patient.

Rx Only

100 Capsules

Each extended-release capsule contains:
Dextroamphetamine Saccharate 3.75 mg,
Amphetamine Aspartate Monohydrate
3.75 mg, Dextroamphetamine Sulfate
3.75 mg, Amphetamine Sulfate 3.75 mg.
Total amphetamine base equivalence 9.4 mg.

See package insert for complete
prescribing information.

Store at 20° to 25°C (68° to 77°F);
Excursions 15° to 30°C (59° to 86°F)
[See USP Controlled Room Temperature].
Dispense in tight, light-resistant container
as defined in the USP.

Marketed by: GSMS, Incorporated
Camarillo, CA 93012 USA

Distributed by: Lannett Company, Inc.
Philadelphia, PA 19136

NDC 51407-559-01

**Dextroamphetamine Saccharate,
Amphetamine Aspartate Monohydrate,
Dextroamphetamine Sulfate and
Amphetamine Sulfate** **CII**

Extended-Release Capsules

(Mixed Salts of A Single-Entity
Amphetamine Product)

15 mg

**PHARMACIST: Dispense with
Medication Guide to each patient.**

Print Medication Guide at: <https://gsms.us/>

Rx Only
100 Capsules



CIB72159A
Rev. 12/22

GTIN:
LOT:
EXP:
SN:



PRINCIPAL DISPLAY PANEL - 20 mg Capsule Bottle Label

NDC 51407-560-01

**Dextroamphetamine Saccharate, Amphetamine Aspartate Monohydrate,
Dextroamphetamine Sulfate and Amphetamine Sulfate
Extended-Release Capsules**(Mixed Salts of A Single-Entity Amphetamine Product)

CII

20 mg

Dispense the Medication Guide provided separately to each patient.

RxOnly

100 Capsules

Each extended-release capsule contains:
 Dextroamphetamine Saccharate 5 mg,
 Amphetamine Aspartate Monohydrate
 5 mg, Dextroamphetamine Sulfate
 5 mg, Amphetamine Sulfate 5 mg.
 Total amphetamine base equivalence 12.5 mg.

**See package insert for complete
 prescribing information.**

Store at 20° to 25°C (68° to 77°F);
 Excursions 15° to 30°C (59° to 86°F)
 [See USP Controlled Room Temperature].
 Dispense in tight, light-resistant container
 as defined in the USP.

Marketed by: GSMS, Incorporated
 Camarillo, CA 93012 USA


Distributed by: Lannett Company, Inc.
 Philadelphia, PA 19136


NDC 51407-**560**-01

**Dextroamphetamine Saccharate,
 Amphetamine Aspartate Monohydrate,
 Dextroamphetamine Sulfate and
 Amphetamine Sulfate** **CII**
Extended-Release Capsules
 (Mixed Salts of A Single-Entity
 Amphetamine Product)

20 mg


**PHARMACIST: Dispense with
 Medication Guide to each patient.
 Print Medication Guide at: <https://gsms.us/>**

Rx Only 
 100 Capsules



N 3 51407-560-01 8
 CIB72160A
 Rev. 12/22

GTIN:
 LOT:
 EXP:
 SN:



PRINCIPAL DISPLAY PANEL - 25 mg Capsule Bottle Label

NDC 51407-561-01

**Dextroamphetamine Saccharate, Amphetamine Aspartate Monohydrate,
Dextroamphetamine Sulfate and Amphetamine Sulfate
Extended-Release Capsules**(Mixed Salts of A Single-Entity Amphetamine Product)

CII

25 mg

Dispense the Medication Guide provided separately to each patient.

RxOnly

100 Capsules

Each extended-release capsule contains:
 Dextroamphetamine Saccharate 6.25 mg,
 Amphetamine Aspartate Monohydrate
 6.25 mg, Dextroamphetamine Sulfate
 6.25 mg, Amphetamine Sulfate 6.25 mg.
 Total amphetamine base equivalence 15.6 mg.

**See package insert for complete
 prescribing information.**

Store at 20° to 25°C (68° to 77°F);
 Excursions 15° to 30°C (59° to 86°F)
 [See USP Controlled Room Temperature].
 Dispense in tight, light-resistant container
 as defined in the USP.

Marketed by: GSMS, Incorporated
 Camarillo, CA 93012 USA


Distributed by: Lannett Company, Inc.
 Philadelphia, PA 19136


NDC 51407-**561**-01

**Dextroamphetamine Saccharate,
 Amphetamine Aspartate Monohydrate,
 Dextroamphetamine Sulfate and
 Amphetamine Sulfate** **CII**
Extended-Release Capsules
 (Mixed Salts of A Single-Entity
 Amphetamine Product)

25 mg


**PHARMACIST: Dispense with
 Medication Guide to each patient.
 Print Medication Guide at: <https://gsms.us/>**

Rx Only 
 100 Capsules



N 3 51407-561-01 5
 CIB72161A
 Rev. 12/22

GTIN:
 LOT:
 EXP:
 SN:



PRINCIPAL DISPLAY PANEL - 30 mg Capsule Bottle Label

NDC 51407-562-01

Dextroamphetamine Saccharate, Amphetamine Aspartate Monohydrate, Dextroamphetamine Sulfate and Amphetamine Sulfate Extended-Release Capsules(Mixed Salts of A Single-Entity Amphetamine Product)

CII

30 mg

Dispense the Medication Guide provided separately to each patient.

RxOnly

100 Capsules

Each extended-release capsule contains:
Dextroamphetamine Saccharate 7.5 mg,
Amphetamine Aspartate Monohydrate 7.5 mg, Dextroamphetamine Sulfate 7.5 mg, Amphetamine Sulfate 7.5 mg.
Total amphetamine base equivalence 18.8 mg.

See package insert for complete prescribing information.

Store at 20° to 25°C (68° to 77°F);
Excursions 15° to 30°C (59° to 86°F)
[See USP Controlled Room Temperature].
Dispense in tight, light-resistant container as defined in the USP.

Marketed by: GSMS, Incorporated
Camarillo, CA 93012 USA

Distributed by: Lannett Company, Inc.
Philadelphia, PA 19136

NDC 51407-562-01


Dextroamphetamine Saccharate, Amphetamine Aspartate Monohydrate, Dextroamphetamine Sulfate and Amphetamine Sulfate Extended-Release Capsules **CII**
(Mixed Salts of A Single-Entity Amphetamine Product)

30 mg

PHARMACIST: Dispense with Medication Guide to each patient.
Print Medication Guide at: <https://gsms.us/>



51407-562-01 2



CIB72162A
Rev. 12/22

GTIN:
LOT:
EXP:
SN:

Rx Only
100 Capsules



DEXTROAMPHETAMINE SACCHARATE, AMPHETAMINE ASPARTATE MONOHYDRATE, DEXTROAMPHETAMINE SULFATE AND AMPHETAMINE SULFATE

dextroamphetamine sulfate, dextroamphetamine saccharate, amphetamine sulfate and amphetamine aspartate capsule, extended release

Product Information			
Product Type	HUMAN PRESCRIPTION DRUG	Item Code (Source)	NDC:51407-557
Route of Administration	ORAL	DEA Schedule	CII
Active Ingredient/Active Moiety			
Ingredient Name	Basis of Strength	Strength	
DEXTROAMPHETAMINE SULFATE (UNII: JJ768O327N) (DEXTROAMPHETAMINE - UNII:TZ47U051FI)	DEXTROAMPHETAMINE SULFATE	1.25 mg	
DEXTROAMPHETAMINE SACCHARATE (UNII: G83415V073) (DEXTROAMPHETAMINE - UNII:TZ47U051FI)	DEXTROAMPHETAMINE SACCHARATE	1.25 mg	
AMPHETAMINE ASPARTATE MONOHYDRATE (UNII: O1ZPV62004) (AMPHETAMINE - UNII:CK833KGX7E)	AMPHETAMINE ASPARTATE MONOHYDRATE	1.25 mg	
AMPHETAMINE SULFATE (UNII: 6DPV8NK46S) (AMPHETAMINE - UNII:CK833KGX7E)	AMPHETAMINE SULFATE	1.25 mg	
Inactive Ingredients			
Ingredient Name	Strength		
AMMONIA (UNII: 5138Q19F1X)			
D&C YELLOW NO. 10 ALUMINUM LAKE (UNII: CQ3XH3DET6)			

FD&C BLUE NO. 1 ALUMINUM LAKE (UNII: J9EQA3S2JM)	
FD&C BLUE NO. 2 (UNII: L06K8R7DQK)	
FD&C BLUE NO. 2--ALUMINUM LAKE (UNII: 4AQJ3LG584)	
FERROSFERRIC OXIDE (UNII: XM0M87F357)	
GELATIN, UNSPECIFIED (UNII: 2G86QN327L)	
HYPROMELLOSE 2910 (5 MPA.S) (UNII: R75537T0T4)	
METHACRYLIC ACID AND ETHYL ACRYLATE COPOLYMER (UNII: NX76LV5T8J)	
POTASSIUM HYDROXIDE (UNII: WZH3C48M4T)	
SHELLAC (UNII: 46N107B71O)	
STARCH, CORN (UNII: O8232NY3SJ)	
SUCROSE (UNII: C151H8M554)	
TALC (UNII: 7SEV7J4R1U)	
TITANIUM DIOXIDE (UNII: 15FIX9V2JP)	
TRIETHYL CITRATE (UNII: 8Z96QXD6UM)	

Product Characteristics

Color	blue (blue opaque cap) , white (natural body)	Score	no score
Shape	CAPSULE (CAPSULE)	Size	16mm
Flavor		Imprint Code	LANNETT;0790
Contains			

Packaging

#	Item Code	Package Description	Marketing Start Date	Marketing End Date
1	NDC:51407-557-01	100 in 1 BOTTLE; Type 0: Not a Combination Product	02/21/2023	

Marketing Information

Marketing Category	Application Number or Monograph Citation	Marketing Start Date	Marketing End Date
ANDA	ANDA214403	11/26/2021	

DEXTROAMPHETAMINE SACCHARATE, AMPHETAMINE ASPARTATE MONOHYDRATE, DEXTROAMPHETAMINE SULFATE AND AMPHETAMINE SULFATE

dextroamphetamine sulfate, dextroamphetamine saccharate, amphetamine sulfate and amphetamine aspartate capsule, extended release

Product Information

Product Type	HUMAN PRESCRIPTION DRUG	Item Code (Source)	NDC:51407-558
Route of Administration	ORAL	DEA Schedule	CII

Active Ingredient/Active Moiety

Ingredient Name	Basis of Strength	Strength
DEXTROAMPHETAMINE SULFATE (UNII: JJ768O327N) (DEXTROAMPHETAMINE - UNII:TZ47U051FI)	DEXTROAMPHETAMINE SULFATE	2.5 mg
DEXTROAMPHETAMINE SACCHARATE (UNII: G83415V073) (DEXTROAMPHETAMINE - UNII:TZ47U051FI)	DEXTROAMPHETAMINE SACCHARATE	2.5 mg
AMPHETAMINE ASPARTATE MONOHYDRATE (UNII: O1ZPV62004) (AMPHETAMINE - UNII:CK833KGX7E)	AMPHETAMINE ASPARTATE MONOHYDRATE	2.5 mg
AMPHETAMINE SULFATE (UNII: 6DPV8NK46S) (AMPHETAMINE - UNII:CK833KGX7E)	AMPHETAMINE SULFATE	2.5 mg

Inactive Ingredients				
Ingredient Name			Strength	
AMMONIA (UNII: 5138Q19F1X)				
D&C YELLOW NO. 10 ALUMINUM LAKE (UNII: CQ3XH3DET6)				
FD&C BLUE NO. 1 (UNII: H3R47K3TBD)				
FD&C BLUE NO. 1 ALUMINUM LAKE (UNII: J9EQA3S2JM)				
FD&C BLUE NO. 2--ALUMINUM LAKE (UNII: 4AQJ3LG584)				
FD&C RED NO. 40 (UNII: WZB9127XOA)				
FERROSFERRIC OXIDE (UNII: XM0M87F357)				
GELATIN, UNSPECIFIED (UNII: 2G86QN327L)				
HYPROMELLOSE 2910 (5 MPA.S) (UNII: R75537T0T4)				
METHACRYLIC ACID AND ETHYL ACRYLATE COPOLYMER (UNII: NX76LV5T8J)				
POTASSIUM HYDROXIDE (UNII: WZH3C48M4T)				
SHELLAC (UNII: 46N107B71O)				
STARCH, CORN (UNII: O8232NY3SJ)				
SUCROSE (UNII: C151H8M554)				
TALC (UNII: 7SEV7J4R1U)				
TITANIUM DIOXIDE (UNII: 15FIX9V2JP)				
TRIETHYL CITRATE (UNII: 8Z96QXD6UM)				
Product Characteristics				
Color	blue (blue opaque cap) , blue (blue body)		Score	no score
Shape	CAPSULE (CAPSULE)		Size	16mm
Flavor			Imprint Code	Lannett;0791
Contains				
Packaging				
#	Item Code	Package Description	Marketing Start Date	Marketing End Date
1	NDC:51407-558-01	100 in 1 BOTTLE; Type 0: Not a Combination Product	02/21/2023	
Marketing Information				
Marketing Category	Application Number or Monograph Citation	Marketing Start Date	Marketing End Date	
ANDA	ANDA214403	11/26/2021		

DEXTROAMPHETAMINE SACCHARATE, AMPHETAMINE ASPARTATE MONOHYDRATE, DEXTROAMPHETAMINE SULFATE AND AMPHETAMINE SULFATE			
dextroamphetamine sulfate, dextroamphetamine saccharate, amphetamine sulfate and amphetamine aspartate capsule, extended release			
Product Information			
Product Type	HUMAN PRESCRIPTION DRUG	Item Code (Source)	NDC:51407-559
Route of Administration	ORAL	DEA Schedule	CII
Active Ingredient/Active Moiety			
Ingredient Name	Basis of Strength	Strength	
DEXTROAMPHETAMINE SULFATE (UNII: 4360327N)	DEXTROAMPHETAMINE		

DEXTROAMPHETAMINE SULFATE (UNII: JJ768U5Z7N) (DEXTROAMPHETAMINE - UNII:TZ47U051FI)	DEXTROAMPHETAMINE SULFATE	3.75 mg
DEXTROAMPHETAMINE SACCHARATE (UNII: G83415V073) (DEXTROAMPHETAMINE - UNII:TZ47U051FI)	DEXTROAMPHETAMINE SACCHARATE	3.75 mg
AMPHETAMINE ASPARTATE MONOHYDRATE (UNII: O1ZPV62004) (AMPHETAMINE - UNII:CK833KGX7E)	AMPHETAMINE ASPARTATE MONOHYDRATE	3.75 mg
AMPHETAMINE SULFATE (UNII: 6DPV8NK46S) (AMPHETAMINE - UNII:CK833KGX7E)	AMPHETAMINE SULFATE	3.75 mg

Inactive Ingredients

Ingredient Name	Strength
AMMONIA (UNII: 5138Q19F1X)	
D&C YELLOW NO. 10 ALUMINUM LAKE (UNII: CQ3XH3DET6)	
FD&C BLUE NO. 1 (UNII: H3R47K3TBD)	
FD&C BLUE NO. 1 ALUMINUM LAKE (UNII: J9EQA3S2JM)	
FD&C BLUE NO. 2--ALUMINUM LAKE (UNII: 4AQJ3LG584)	
FD&C RED NO. 40 (UNII: WZB9127XOA)	
FERROSFERRIC OXIDE (UNII: XM0M87F357)	
GELATIN, UNSPECIFIED (UNII: 2G86QN327L)	
HYPROMELLOSE 2910 (5 MPA.S) (UNII: R75537T0T4)	
METHACRYLIC ACID AND ETHYL ACRYLATE COPOLYMER (UNII: NX76LV5T8J)	
POTASSIUM HYDROXIDE (UNII: WZH3C48M4T)	
SHELLAC (UNII: 46N107B71O)	
STARCH, CORN (UNII: O8232NY35J)	
SUCROSE (UNII: C151H8M554)	
TALC (UNII: 7SEV7J4R1U)	
TITANIUM DIOXIDE (UNII: 15FIX9V2JP)	
TRIETHYL CITRATE (UNII: 8Z96QXD6UM)	

Product Characteristics

Color	white (white opaque cap) , blue (blue body)	Score	no score
Shape	CAPSULE (CAPSULE)	Size	18mm
Flavor		Imprint Code	Lannett;0792
Contains			

Packaging

#	Item Code	Package Description	Marketing Start Date	Marketing End Date
1	NDC:51407-559-01	100 in 1 BOTTLE; Type 0: Not a Combination Product	02/21/2023	

Marketing Information

Marketing Category	Application Number or Monograph Citation	Marketing Start Date	Marketing End Date
ANDA	ANDA214403	11/26/2021	

DEXTROAMPHETAMINE SACCHARATE, AMPHETAMINE ASPARTATE MONOHYDRATE, DEXTROAMPHETAMINE SULFATE AND AMPHETAMINE SULFATE

dextroamphetamine sulfate, dextroamphetamine saccharate, amphetamine sulfate and amphetamine aspartate capsule, extended release

Product Information

Product Type	HUMAN PRESCRIPTION DRUG	Item Code (Source)	NDC:51407-560	
Route of Administration	ORAL	DEA Schedule	CII	
Active Ingredient/Active Moiety				
Ingredient Name		Basis of Strength	Strength	
DEXTROAMPHETAMINE SULFATE (UNII: JJ768O327N) (DEXTROAMPHETAMINE - UNII:TZ47U051FI)		DEXTROAMPHETAMINE SULFATE	5 mg	
DEXTROAMPHETAMINE SACCHARATE (UNII: G83415V073) (DEXTROAMPHETAMINE - UNII:TZ47U051FI)		DEXTROAMPHETAMINE SACCHARATE	5 mg	
AMPHETAMINE ASPARTATE MONOHYDRATE (UNII: O1ZPV62004) (AMPHETAMINE - UNII:CK833KGX7E)		AMPHETAMINE ASPARTATE MONOHYDRATE	5 mg	
AMPHETAMINE SULFATE (UNII: 6DPV8NK46S) (AMPHETAMINE - UNII:CK833KGX7E)		AMPHETAMINE SULFATE	5 mg	
Inactive Ingredients				
Ingredient Name			Strength	
AMMONIA (UNII: 5138Q19F1X)				
D&C YELLOW NO. 10 ALUMINUM LAKE (UNII: CQ3XH3DET6)				
FD&C BLUE NO. 1 ALUMINUM LAKE (UNII: J9EQA3S2JM)				
FD&C BLUE NO. 2--ALUMINUM LAKE (UNII: 4AQJ3LG584)				
FERRIC OXIDE RED (UNII: 1K09F3G675)				
FERRIC OXIDE YELLOW (UNII: EX438O2MRT)				
FERROSFERRIC OXIDE (UNII: XM0M87F357)				
GELATIN, UNSPECIFIED (UNII: 2G86QN327L)				
HYPROMELLOSE 2910 (5 MPAS) (UNII: R75537T0T4)				
METHACRYLIC ACID AND ETHYL ACRYLATE COPOLYMER (UNII: NX76LV5T8J)				
POTASSIUM HYDROXIDE (UNII: WZH3C48M4T)				
SHELLAC (UNII: 46N107B71O)				
STARCH, CORN (UNII: O8232NY3SJ)				
SUCROSE (UNII: C151H8M554)				
TALC (UNII: 7SEV7J4R1U)				
TITANIUM DIOXIDE (UNII: 15FIX9V2JP)				
TRIETHYL CITRATE (UNII: 8Z96QXD6UM)				
Product Characteristics				
Color	orange (orange opaque cap) , orange (light orange opaque body)	Score	no score	
Shape	CAPSULE (CAPSULE)	Size	18mm	
Flavor		Imprint Code	Lannett;0793	
Contains				
Packaging				
#	Item Code	Package Description	Marketing Start Date	Marketing End Date
1	NDC:51407-560-01	100 in 1 BOTTLE; Type 0: Not a Combination Product	02/21/2023	
Marketing Information				
Marketing Category	Application Number or Monograph Citation	Marketing Start Date	Marketing End Date	
ANDA	ANDA214403	11/26/2021		

DEXTROAMPHETAMINE SACCHARATE, AMPHETAMINE ASPARTATE

MONOHYDRATE, DEXTROAMPHETAMINE SULFATE AND AMPHETAMINE SULFATE

dextroamphetamine sulfate, dextroamphetamine saccharate, amphetamine sulfate and amphetamine aspartate capsule, extended release

Product Information

Product Type	HUMAN PRESCRIPTION DRUG	Item Code (Source)	NDC:51407-561
Route of Administration	ORAL	DEA Schedule	CII

Active Ingredient/Active Moiety

Ingredient Name	Basis of Strength	Strength
DEXTROAMPHETAMINE SULFATE (UNII: JJ768O327N) (DEXTROAMPHETAMINE - UNII:TZ47U051FI)	DEXTROAMPHETAMINE SULFATE	6.25 mg
DEXTROAMPHETAMINE SACCHARATE (UNII: G83415V073) (DEXTROAMPHETAMINE - UNII:TZ47U051FI)	DEXTROAMPHETAMINE SACCHARATE	6.25 mg
AMPHETAMINE ASPARTATE MONOHYDRATE (UNII: O1ZPV62004) (AMPHETAMINE - UNII:CK833KGX7E)	AMPHETAMINE ASPARTATE MONOHYDRATE	6.25 mg
AMPHETAMINE SULFATE (UNII: 6DPV8NK46S) (AMPHETAMINE - UNII:CK833KGX7E)	AMPHETAMINE SULFATE	6.25 mg

Inactive Ingredients

Ingredient Name	Strength
AMMONIA (UNII: 5138Q19F1X)	
D&C YELLOW NO. 10 ALUMINUM LAKE (UNII: CQ3XH3DET6)	
FD&C BLUE NO. 1 ALUMINUM LAKE (UNII: J9EQA3S2JM)	
FD&C BLUE NO. 2--ALUMINUM LAKE (UNII: 4AQJ3LG584)	
FERRIC OXIDE RED (UNII: 1K09F3G675)	
FERRIC OXIDE YELLOW (UNII: EX438O2MRT)	
FERROSFERRIC OXIDE (UNII: XM0M87F357)	
GELATIN, UNSPECIFIED (UNII: 2G86QN327L)	
HYPROMELLOSE 2910 (5 MPA.S) (UNII: R75537T0T4)	
METHACRYLIC ACID AND ETHYL ACRYLATE COPOLYMER (UNII: NX76LV5T8J)	
POTASSIUM HYDROXIDE (UNII: WZH3C48M4T)	
SHELLAC (UNII: 46N107B71O)	
STARCH, CORN (UNII: O8232NY3SJ)	
SUCROSE (UNII: C151H8M554)	
TALC (UNII: 7SEV7J4R1U)	
TITANIUM DIOXIDE (UNII: 15FIX9V2JP)	
TRIETHYL CITRATE (UNII: 8Z96QXD6UM)	

Product Characteristics

Color	white (white opaque cap) , orange (light orange opaque body)	Score	no score
Shape	CAPSULE (CAPSULE)	Size	19mm
Flavor		Imprint Code	Lannett;0794
Contains			

Packaging

#	Item Code	Package Description	Marketing Start Date	Marketing End Date
1	NDC:51407-561-01	100 in 1 BOTTLE; Type 0: Not a Combination Product	02/21/2023	

Marketing Information

Marketing Category	Application Number or Monograph Citation	Marketing Start Date	Marketing End Date
ANDA	ANDA214403	11/26/2021	

DEXTROAMPHETAMINE SACCHARATE, AMPHETAMINE ASPARTATE MONOHYDRATE, DEXTROAMPHETAMINE SULFATE AND AMPHETAMINE SULFATE

dextroamphetamine sulfate, dextroamphetamine saccharate, amphetamine sulfate and amphetamine aspartate capsule, extended release

Product Information

Product Type	HUMAN PRESCRIPTION DRUG	Item Code (Source)	NDC:51407-562
Route of Administration	ORAL	DEA Schedule	CII

Active Ingredient/Active Moiety

Ingredient Name	Basis of Strength	Strength
DEXTROAMPHETAMINE SULFATE (UNII: JJ768O327N) (DEXTROAMPHETAMINE - UNII:TZ47U051FI)	DEXTROAMPHETAMINE SULFATE	7.5 mg
DEXTROAMPHETAMINE SACCHARATE (UNII: G83415V073) (DEXTROAMPHETAMINE - UNII:TZ47U051FI)	DEXTROAMPHETAMINE SACCHARATE	7.5 mg
AMPHETAMINE ASPARTATE MONOHYDRATE (UNII: O1ZPV62004) (AMPHETAMINE - UNII:CK833KGX7E)	AMPHETAMINE ASPARTATE MONOHYDRATE	7.5 mg
AMPHETAMINE SULFATE (UNII: 6DPV8NK46S) (AMPHETAMINE - UNII:CK833KGX7E)	AMPHETAMINE SULFATE	7.5 mg

Inactive Ingredients

Ingredient Name	Strength
AMMONIA (UNII: 5138Q19F1X)	
D&C YELLOW NO. 10 ALUMINUM LAKE (UNII: CQ3XH3DET6)	
FD&C BLUE NO. 1 ALUMINUM LAKE (UNII: J9EQA3S2JM)	
FD&C BLUE NO. 2--ALUMINUM LAKE (UNII: 4AQJ3LG584)	
FERRIC OXIDE RED (UNII: 1K09F3G675)	
FERRIC OXIDE YELLOW (UNII: EX438O2MRT)	
FERROSFERRIC OXIDE (UNII: XM0M87F357)	
GELATIN, UNSPECIFIED (UNII: 2G86QN327L)	
HYPROMELLOSE 2910 (5 MPA.S) (UNII: R75537T0T4)	
METHACRYLIC ACID AND ETHYL ACRYLATE COPOLYMER (UNII: NX76LV5T8J)	
POTASSIUM HYDROXIDE (UNII: WZH3C48M4T)	
SHELLAC (UNII: 46N107B71O)	
STARCH, CORN (UNII: O8232NY3SJ)	
SUCROSE (UNII: C151H8M554)	
TALC (UNII: 7SEV7J4R1U)	
TITANIUM DIOXIDE (UNII: 15FIX9V2JP)	
TRIETHYL CITRATE (UNII: 8Z96QXD6UM)	

Product Characteristics

Color	orange (orange opaque cap) , white (natural body)	Score	no score
Shape	CAPSULE (CAPSULE)	Size	19mm
Flavor		Imprint Code	Lannett;0795
Contains			

Packaging				
#	Item Code	Package Description	Marketing Start Date	Marketing End Date
1	NDC:51407-562-01	100 in 1 BOTTLE; Type 0: Not a Combination Product	02/21/2023	
Marketing Information				
Marketing Category	Application Number or Monograph Citation		Marketing Start Date	Marketing End Date
ANDA	ANDA214403		11/26/2021	

Labeler - Golden State Medical Supply, Inc. (603184490)

Establishment			
Name	Address	ID/FEI	Business Operations
Lannett Company, Inc.		006422406	manufacture(51407-557, 51407-558, 51407-559, 51407-560, 51407-561, 51407-562)

Revised: 12/2023

Golden State Medical Supply, Inc.