

# ZALTRAP- ziv-aflibercept solution, concentrate sanofi-aventis U.S. LLC

## HIGHLIGHTS OF PRESCRIBING INFORMATION

These highlights do not include all the information needed to use ZALTRAP safely and effectively. See full prescribing information for ZALTRAP.

ZALTRAP® (ziv-aflibercept) injection, for intravenous use  
Initial U.S. Approval: 2012

## RECENT MAJOR CHANGES

Warnings and Precautions (5.11)

12/2023

## INDICATIONS AND USAGE

ZALTRAP, a vascular endothelial growth factor inhibitor, in combination with fluorouracil, leucovorin, irinotecan (FOLFIRI), is indicated for the treatment of patients with metastatic colorectal cancer that is resistant to or has progressed following an oxaliplatin-containing regimen. (1)

## DOSAGE AND ADMINISTRATION

- 4 mg per kg as an intravenous infusion over 1 hour every 2 weeks. (2.1, 2.3)
- Do not administer as an intravenous push or bolus. (2.3)

## DOSAGE FORMS AND STRENGTHS

Injection: 100 mg/4 mL (25 mg/mL) and 200 mg/8 mL (25 mg/mL) solution in a single-dose vial (3)

## CONTRAINDICATIONS

None (4)

## WARNINGS AND PRECAUTIONS

- **Hemorrhage:** Severe and sometimes fatal hemorrhage, including gastrointestinal (GI) hemorrhage, has been reported in patients who have received ZALTRAP. Do not administer ZALTRAP to patients with severe hemorrhage. (5.1)
- **Gastrointestinal Perforation:** Discontinue ZALTRAP therapy in patients who experience GI perforation. (5.2)
- **Impaired Wound Healing:** Withhold ZALTRAP for at least 4 weeks prior to elective surgery. Do not administer for at least 4 weeks following major surgery and until wounds have adequately healed. Discontinue ZALTRAP in patients with impaired wound healing. The safety of resumption of ZALTRAP after resolution of wound healing complications has not been established. (5.3)
- **Fistula Formation:** Discontinue ZALTRAP if fistula occurs. (2.2, 5.4)
- **Hypertension:** Monitor blood pressure and treat hypertension. Temporarily suspend ZALTRAP if hypertension is not controlled. Discontinue ZALTRAP if hypertensive crisis develops. (2.2, 5.5)
- **Arterial Thromboembolic Events (ATE):** Discontinue ZALTRAP if ATE develops. (5.6)
- **Proteinuria:** Monitor urine protein. Suspend ZALTRAP for proteinuria of 2 grams per 24 hours or more. Discontinue ZALTRAP if nephrotic syndrome or thrombotic microangiopathy (TMA) develops. (2.2, 5.7)
- **Neutropenia and Neutropenic Complications:** Delay administration of ZALTRAP/FOLFIRI until neutrophil count is  $1.5 \times 10^9/L$  or higher. (5.8)
- **Diarrhea and Dehydration:** Incidence of severe diarrhea and dehydration is increased. Monitor elderly patients more closely. (5.9, 8.5)
- **Reversible Posterior Leukoencephalopathy Syndrome:** Discontinue ZALTRAP. (5.10)
- **Embryo-Fetal Toxicity:** Can cause fetal harm. Advise females of potential risk to fetus and need for use of effective contraception. (5.11, 8.1, 8.3)

## ADVERSE REACTIONS

Most common adverse reactions ( $\geq 20\%$  incidence) were leukopenia, diarrhea, neutropenia, proteinuria, AST increased, stomatitis, fatigue, thrombocytopenia, ALT increased, hypertension, weight decreased, decreased appetite, epistaxis, abdominal pain, dysphonia, serum creatinine increased, and headache. (6.1)

To report SUSPECTED ADVERSE REACTIONS, contact sanofi-aventis at 1-800-633-1610 or

- Lactation: Advise not to breastfeed. (8.2)

See 17 for **PATIENT COUNSELING INFORMATION**.

Revised: 12/2023

---

## **FULL PRESCRIBING INFORMATION: CONTENTS\***

### **1 INDICATIONS AND USAGE**

### **2 DOSAGE AND ADMINISTRATION**

- 2.1 Recommended Dose and Schedule
- 2.2 Dosage Modifications for Adverse Reactions
- 2.3 Preparation and Administration

### **3 DOSAGE FORMS AND STRENGTHS**

### **4 CONTRAINDICATIONS**

### **5 WARNINGS AND PRECAUTIONS**

- 5.1 Hemorrhage
- 5.2 Gastrointestinal Perforation
- 5.3 Impaired Wound Healing
- 5.4 Fistula Formation
- 5.5 Hypertension
- 5.6 Arterial Thromboembolic Events
- 5.7 Proteinuria
- 5.8 Neutropenia and Neutropenic Complications
- 5.9 Diarrhea and Dehydration
- 5.10 Reversible Posterior Leukoencephalopathy Syndrome
- 5.11 Embryo-Fetal Toxicity

### **6 ADVERSE REACTIONS**

- 6.1 Clinical Trials Experience
- 6.2 Immunogenicity
- 6.3 Postmarketing Experience

### **7 DRUG INTERACTIONS**

### **8 USE IN SPECIFIC POPULATIONS**

- 8.1 Pregnancy
- 8.2 Lactation
- 8.3 Females and Males of Reproductive Potential
- 8.4 Pediatric Use
- 8.5 Geriatric Use
- 8.6 Renal Impairment
- 8.7 Hepatic Impairment

### **11 DESCRIPTION**

### **12 CLINICAL PHARMACOLOGY**

- 12.1 Mechanism of Action
- 12.2 Pharmacodynamics
- 12.3 Pharmacokinetics

### **13 NONCLINICAL TOXICOLOGY**

- 13.1 Carcinogenesis, Mutagenesis, Impairment of Fertility

13.2 Animal Toxicology and/or Pharmacology

## **14 CLINICAL STUDIES**

## **16 HOW SUPPLIED/STORAGE AND HANDLING**

## **17 PATIENT COUNSELING INFORMATION**

\* Sections or subsections omitted from the full prescribing information are not listed.

---

## **FULL PRESCRIBING INFORMATION**

### **1 INDICATIONS AND USAGE**

ZALTRAP, in combination with fluorouracil, leucovorin, irinotecan-(FOLFIRI), is indicated for the treatment of patients with metastatic colorectal cancer (mCRC) that is resistant to or has progressed following an oxaliplatin-containing regimen.

### **2 DOSAGE AND ADMINISTRATION**

#### **2.1 Recommended Dose and Schedule**

The recommended dosage of ZALTRAP is 4 mg per kg of actual body weight as an intravenous infusion over 1 hour every two weeks in combination with FOLFIRI until disease progression or unacceptable toxicity. Administer ZALTRAP prior to any component of the FOLFIRI regimen on the day of treatment.

Refer to prescribing information for irinotecan, fluorouracil, and leucovorin for the recommended dosage and dosage modifications for these drugs.

#### **2.2 Dosage Modifications for Adverse Reactions**

Discontinue ZALTRAP for:

- Severe hemorrhage [see *Warnings and Precautions (5.1)*]
- Gastrointestinal perforation [see *Warnings and Precautions (5.2)*]
- Impaired wound healing [see *Warnings and Precautions (5.3)*]
- Fistula formation [see *Warnings and Precautions (5.4)*]
- Hypertensive crisis or hypertensive encephalopathy [see *Warnings and Precautions (5.5)*]
- Arterial thromboembolic events (ATE) [see *Warnings and Precautions (5.6)*]
- Nephrotic syndrome or thrombotic microangiopathy (TMA) [see *Warnings and Precautions (5.7)*]
- Reversible posterior leukoencephalopathy syndrome (RPLS) [see *Warnings and Precautions (5.10)*]

Temporarily suspend ZALTRAP:

- At least 4 weeks prior to elective surgery [see *Warnings and Precautions (5.3)*].
- For uncontrolled hypertension until controlled. Upon resumption, permanently reduce the ZALTRAP dose to 2 mg per kg [see *Warnings and Precautions (5.5)*].
- For proteinuria of 2 grams per 24 hours or more. Resume when proteinuria is less

than 2 grams per 24 hours. For recurrent proteinuria, suspend ZALTRAP until proteinuria is less than 2 grams per 24 hours and then permanently reduce the ZALTRAP dose to 2 mg per kg [see *Warnings and Precautions (5.7)*].

## **2.3 Preparation and Administration**

### Preparation

Inspect vials visually prior to use. ZALTRAP is a clear, colorless to pale yellow solution. Do not use vial if the solution is discolored or cloudy or if the solution contains particles.

Withdraw the prescribed dose of ZALTRAP and dilute in 0.9% Sodium Chloride Injection, USP or 5% Dextrose Injection, USP to achieve a final concentration of 0.6 mg/mL to 8 mg/mL.

Do not re-enter the vial after the initial puncture. Discard any unused portion left in the vial.

Use polyvinyl chloride (PVC) infusion bags containing bis (2-ethylhexyl) phthalate (DEHP) or polyolefin infusion bags.

Store diluted ZALTRAP refrigerated at 2°C to 8°C (36°F to 46°F) for up to 24 hours or at controlled room temperature of 20°C to 25°C (68°F to 77°F) for up to 8 hours. Discard any unused portion left in the infusion bag.

### Administration

Administer the diluted ZALTRAP solution as an intravenous infusion over 1 hour through a 0.2-micron polyethersulfone filter. Do not use filters made of polyvinylidene fluoride (PVDF) or nylon.

Do not administer as an intravenous push or bolus.

Do not combine ZALTRAP with other drugs in the same infusion bag or intravenous line.

Administer ZALTRAP using an infusion set made of one of the following materials:

- PVC containing DEHP
- DEHP free PVC containing trioctyl-trimellitate (TOTM)
- polypropylene
- polyethylene lined PVC
- polyurethane

## **3 DOSAGE FORMS AND STRENGTHS**

ZALTRAP is a clear, colorless to pale-yellow solution available as:

- Injection: 100 mg/4 mL (25 mg/mL) solution in a single-dose vial
- Injection: 200 mg/8 mL (25 mg/mL) solution in a single-dose vial

## **4 CONTRAINDICATIONS**

None.

## **5 WARNINGS AND PRECAUTIONS**

## 5.1 Hemorrhage

Patients treated with ZALTRAP have an increased risk of hemorrhage, including severe and sometimes fatal hemorrhagic events. In patients with mCRC, bleeding/hemorrhage (all grades) was reported in 38% of patients treated with ZALTRAP/FOLFIRI compared to 19% of patients treated with placebo/FOLFIRI. Grade 3–4 hemorrhagic events, including gastrointestinal hemorrhage, hematuria, and post-procedural hemorrhage, were reported in 3% of patients receiving ZALTRAP/FOLFIRI compared with 1% of patients receiving placebo/FOLFIRI. Severe intracranial hemorrhage and pulmonary hemorrhage/hemoptysis including fatal events have also occurred in patients receiving ZALTRAP.

Monitor patients for signs and symptoms of bleeding. Do not initiate ZALTRAP in patients with severe hemorrhage. Discontinue ZALTRAP in patients who develop severe hemorrhage [see *Dosage and Administration (2.2)*].

## 5.2 Gastrointestinal Perforation

Gastrointestinal (GI) perforation including fatal GI perforation can occur in patients receiving ZALTRAP. Across three placebo-controlled clinical studies (colorectal, pancreatic, and lung cancer populations), the incidence of GI perforation (all grades) was 0.8% for patients treated with ZALTRAP and 0.3% for patients treated with placebo. Grade 3–4 GI perforation occurred in 0.8% of patients treated with ZALTRAP and 0.2% of patients treated with placebo.

Monitor patients for signs and symptoms of GI perforation. Discontinue ZALTRAP therapy in patients who experience GI perforation [see *Dosage and Administration (2.2)*].

## 5.3 Impaired Wound Healing

Grade 3 impaired wound healing was reported in 2 patients (0.3%) treated with ZALTRAP/FOLFIRI regimen.

Withhold ZALTRAP for at least 4 weeks prior to elective surgery. Do not administer ZALTRAP for at least 4 weeks after major surgery and until wounds have adequately healed. For minor surgery such as central venous access port placement, biopsy, and tooth extraction, ZALTRAP may be initiated/resumed once the surgical wound is fully healed. Discontinue ZALTRAP in patients with impaired wound healing. The safety of resumption of ZALTRAP after resolution of wound healing complications has not been established [see *Dosage and Administration (2.2)*].

## 5.4 Fistula Formation

Fistula formation involving gastrointestinal and non-gastrointestinal sites occurs at a higher incidence in patients treated with ZALTRAP. In patients with mCRC, fistulas (anal, enterovesical, enterocutaneous, colovaginal, intestinal sites) were reported in 9 of 611 patients (1.5%) treated with ZALTRAP/FOLFIRI regimen and 3 of 605 patients (0.5%) treated with placebo/FOLFIRI regimen. Grade 3 GI fistula formation occurred in 2 patients treated with ZALTRAP (0.3%) and in 1 patient treated with placebo (0.2%).

Discontinue ZALTRAP therapy in patients who develop fistula [see *Dosage and Administration (2.2)*].

## 5.5 Hypertension

ZALTRAP increases the risk of Grade 3–4 hypertension. There is no clinical trial experience administering ZALTRAP to patients with NYHA class III or IV heart failure. In patients with mCRC, Grade 3 hypertension (defined as requiring adjustment in existing antihypertensive therapy or treatment with more than one drug) was reported in 1.5% of patients treated with placebo/FOLFIRI and 19% of patients treated with ZALTRAP/FOLFIRI. Grade 4 hypertension (hypertensive crisis) was reported in 1 patient (0.2%) treated with ZALTRAP/FOLFIRI. Among those patients treated with ZALTRAP/FOLFIRI developing Grade 3–4 hypertension, 54% had onset during the first two cycles of treatment.

Monitor blood pressure every two weeks or more frequently as clinically indicated during treatment with ZALTRAP. Treat with appropriate antihypertensive therapy and continue monitoring blood pressure regularly. Temporarily suspend ZALTRAP in patients with uncontrolled hypertension until controlled and permanently reduce the ZALTRAP dose to 2 mg per kg for subsequent cycles. Discontinue ZALTRAP in patients with hypertensive crisis or hypertensive encephalopathy [see *Dosage and Administration (2.2)*].

## 5.6 Arterial Thromboembolic Events

ATE, including transient ischemic attack, cerebrovascular accident, and angina pectoris, occurred more frequently in patients who have received ZALTRAP. In patients with mCRC, ATE was reported in 2.6% of patients treated with ZALTRAP/FOLFIRI and 1.7% of patients treated with placebo/FOLFIRI. Grade 3–4 events occurred in 11 patients (1.8%) treated with ZALTRAP/FOLFIRI and 4 patients (0.7%) treated with placebo/FOLFIRI.

Discontinue ZALTRAP in patients who experience an ATE [see *Dosage and Administration (2.2)*].

## 5.7 Proteinuria

Severe proteinuria, nephrotic syndrome, and thrombotic microangiopathy (TMA) occurred more frequently in patients treated with ZALTRAP. In patients with mCRC, proteinuria was reported in 62% patients treated with ZALTRAP/FOLFIRI compared to 41% patients treated with placebo/FOLFIRI. Grade 3–4 proteinuria occurred in 8% of patients treated with ZALTRAP/FOLFIRI compared to 1% of patients treated with placebo/FOLFIRI [see *Adverse Reactions (6.1)*]. Nephrotic syndrome occurred in 2 patients (0.5%) treated with ZALTRAP/FOLFIRI compared to none of the patients treated with placebo/FOLFIRI. TMA was reported in 3 of 2258 patients with cancer enrolled across completed studies.

Monitor proteinuria by urine dipstick analysis and/or urinary protein creatinine ratio (UPCR) for the development or worsening of proteinuria during ZALTRAP therapy. Patients with a dipstick of  $\geq 2+$  for protein or a UPCR greater than 1 should undergo a 24-hour urine collection.

Suspend ZALTRAP administration for proteinuria 2 grams per 24 hours or more, and resume when proteinuria is less than 2 grams per 24 hours. If recurrent, suspend until proteinuria is less than 2 grams per 24 hours and then permanently reduce the ZALTRAP dose to 2 mg per kg. Discontinue ZALTRAP in patients who develop nephrotic syndrome or TMA [see *Dosage and Administration (2.2)*].

## 5.8 Neutropenia and Neutropenic Complications

A higher incidence of neutropenic complications (febrile neutropenia and neutropenic infection) occurred in patients receiving ZALTRAP. In patients with mCRC, Grade 3–4 neutropenia occurred in 37% of patients treated with ZALTRAP/FOLFIRI compared to 30% patients treated with placebo/FOLFIRI [see *Adverse Reactions (6.1)*]. Grade 3–4 febrile neutropenia occurred in 4% of patients treated with ZALTRAP/FOLFIRI compared to 2% of patients treated with placebo/FOLFIRI. Grade 3–4 neutropenic infection/sepsis occurred in 1.5% of patients treated with ZALTRAP/FOLFIRI and 1.2% of patients treated with placebo/FOLFIRI.

Monitor CBC with differential count at baseline and prior to initiation of each cycle of ZALTRAP. Delay ZALTRAP/FOLFIRI until neutrophil count is at or above  $1.5 \times 10^9/L$ .

## 5.9 Diarrhea and Dehydration

The incidence of severe diarrhea is increased in patients treated with ZALTRAP/FOLFIRI. In patients with mCRC, Grade 3–4 diarrhea was reported in 19% of patients treated with ZALTRAP/FOLFIRI compared to 8% of patients treated with placebo/FOLFIRI. Grade 3–4 dehydration was reported in 4% of patients treated with ZALTRAP/FOLFIRI compared to 1% of patients treated with placebo/FOLFIRI [see *Adverse Reactions (6.1)*]. The incidence of diarrhea is increased in patients who are age 65 years or older as compared to patients younger than 65 years of age [see *Use in Specific Populations (8.5)*]. Monitor elderly patients closely for diarrhea.

## 5.10 Reversible Posterior Leukoencephalopathy Syndrome

RPLS (also known as posterior reversible encephalopathy syndrome) was reported in 0.5% of 3795 patients treated with ZALTRAP monotherapy or in combination with chemotherapy.

Confirm the diagnosis of RPLS with magnetic resonance imaging (MRI) and discontinue ZALTRAP in patients who develop RPLS. Symptoms usually resolve or improve within days, although some patients have experienced ongoing neurologic sequelae or death [see *Dosage and Administration (2.2)*].

## 5.11 Embryo-Fetal Toxicity

Based on findings from animal studies and its mechanism of action, ZALTRAP can cause fetal harm when administered to pregnant women. Administration of ziv-aflibercept during the period of organogenesis was embryotoxic and teratogenic in rabbits at exposure levels approximately 0.3 times the human exposure at the 4 mg per kg dose. Advise pregnant women of the potential risk to a fetus. Advise females of reproductive potential to use effective contraception during treatment with ZALTRAP and for 3 months following the last dose [see *Use in Specific Populations (8.1, 8.3)*].

## 6 ADVERSE REACTIONS

The following clinically significant adverse reactions are described elsewhere in the labeling:

- Hemorrhage [see *Warnings and Precautions (5.1)*]
- Gastrointestinal Perforation [see *Warnings and Precautions (5.2)*]

- Impaired Wound Healing [see Warnings and Precautions (5.3)]
- Fistula Formation [see Warnings and Precautions (5.4)]
- Hypertension [see Warnings and Precautions (5.5)]
- Arterial Thromboembolic Events [see Warnings and Precautions (5.6)]
- Proteinuria [see Warnings and Precautions (5.7)]
- Neutropenia and Neutropenic Complications [see Warnings and Precautions (5.8)]
- Diarrhea and Dehydration [see Warnings and Precautions (5.9)]
- Reversible Posterior Leukoencephalopathy Syndrome [see Warnings and Precautions (5.10)]

## 6.1 Clinical Trials Experience

Because clinical trials are conducted under widely varying conditions, adverse reaction rates observed in the clinical trials of a drug cannot be directly compared to rates in the clinical trials of another drug and may not reflect the rates observed in practice.

The safety of ZALTRAP in combination with FOLFIRI was evaluated in VELOUR (EFC102621) [see Clinical Studies (14)]. Patients received ZALTRAP 4 mg per kg (N=611) or placebo (N=605) intravenously every two weeks (one cycle) in combination with FOLFIRI. Patients received a median of 9 cycles of ZALTRAP/FOLFIRI.

The most common Grade 3–4 adverse reactions ( $\geq 5\%$ ) in the ZALTRAP/FOLFIRI arm were neutropenia, diarrhea, hypertension, leukopenia, stomatitis, fatigue, proteinuria, and asthenia.

The most frequent adverse reactions leading to permanent discontinuation in  $\geq 1\%$  of patients treated with ZALTRAP/FOLFIRI regimen were asthenia/fatigue, infections, diarrhea, dehydration, hypertension, stomatitis, venous thromboembolic events, neutropenia, and proteinuria.

The ZALTRAP dose was reduced and/or omitted in 17% of patients. Cycle delays  $> 7$  days occurred in 60% of patients treated with ZALTRAP/FOLFIRI.

The most common adverse reactions ( $\geq 20\%$ ) in the ZALTRAP/FOLFIRI arm were leukopenia, diarrhea, neutropenia, proteinuria, AST increased, stomatitis, fatigue, thrombocytopenia, ALT increased, hypertension, weight decreased, decreased appetite, epistaxis, abdominal pain, dysphonia, serum creatinine increased, and headache.

Adverse reactions and laboratory abnormalities that occurred in  $\geq 5\%$  (all grades) of patients receiving ZALTRAP in combination with FOLFIRI and which occurred at  $\geq 2\%$  higher frequency in patients who received ZALTRAP/FOLFIRI compared to those who received placebo/FOLFIRI in VELOUR are shown in Table 1. VELOUR was not designed to demonstrate a statistically significant difference in adverse reaction rates for ZALTRAP/FOLFIRI as compared to placebo/FOLFIRI for any adverse reactions listed below.

**Table 1: Selected Adverse Reactions and Laboratory Findings in VELOUR**

| Primary System Organ Class<br>Preferred Term | ZALTRAP/ FOLFIRI<br>(N=611) |                   | Placebo/ FOLFIRI<br>(N=605) |                   |
|--|-----------------------------|-------------------|-----------------------------|-------------------|
|  | All grades<br>(%)           | Grades 3-4<br>(%) | All grades<br>(%)           | Grades 3-4<br>(%) |
| <b>Blood and lymphatic system disorders</b>  |                             |                   |                             |                   |



|   |    |     |    |     |
|---|----|-----|----|-----|
| Leukopenia  | 78 | 16  | 72 | 12  |
| Neutropenia   | 67 | 37  | 57 | 30  |
| Thrombocytopenia  | 48 | 3   | 35 | 2   |
| <b>Gastrointestinal disorders</b>                           |    |     |    |     |
| Diarrhea  | 69 | 19  | 57 | 8   |
| Stomatitis  | 50 | 13  | 33 | 5   |
| Abdominal Pain  | 27 | 4   | 24 | 2   |
| Abdominal Pain Upper  | 11 | 1   | 8  | 1   |
| Hemorrhoids   | 6  | 0   | 2  | 0   |
| Rectal Hemorrhage   | 5  | 0.7 | 2  | 0.5 |
| Proctalgia  | 5  | 0.3 | 2  | 0.3 |
| <b>Investigations</b>                                       |    |     |    |     |
| AST increased   | 62 | 3   | 54 | 2   |
| ALT increased   | 50 | 3   | 39 | 2   |
| Weight decreased  | 32 | 3   | 14 | 0.8 |
| <b>Renal and urinary disorders</b>                          |    |     |    |     |
| Proteinuria*  | 62 | 8   | 41 | 1   |
| Serum creatinine increased                                  | 23 | 0   | 19 | 0.5 |
| <b>General disorders and administration site conditions</b> |    |     |    |     |
| Fatigue   | 48 | 13  | 39 | 8   |
| Asthenia  | 18 | 5   | 13 | 3   |
| <b>Vascular disorders</b>                                   |    |     |    |     |
| Hypertension  | 41 | 19  | 11 | 1.5 |
| <b>Metabolism and nutrition disorders</b>                   |    |     |    |     |
| Decreased Appetite  | 32 | 3   | 24 | 2   |
| Dehydration   | 9  | 4   | 3  | 1   |
| <b>Respiratory, thoracic and mediastinal disorders</b>      |    |     |    |     |
| Epistaxis   | 28 | 0.2 | 7  | 0   |
| Dysphonia   | 25 | 0.5 | 3  | 0   |
| Dyspnea   | 12 | 0.8 | 9  | 0.8 |
| Oropharyngeal Pain  | 8  | 0.2 | 3  | 0   |
| Rhinorrhea  | 6  | 0   | 2  | 0   |
| <b>Nervous system disorders</b>                             |    |     |    |     |
| Headache  | 22 | 2   | 9  | 0.3 |
| <b>Skin and subcutaneous tissue disorders</b>               |    |     |    |     |
| Palmar-Plantar Erythrodysesthesia Syndrome                  | 11 | 3   | 4  | 0.5 |
| Skin Hyperpigmentation                                      | 8  | 0   | 3  | 0   |
| <b>Infections</b>   |    |     |    |     |
| Urinary Tract Infection                                     | 9  | 0.8 | 6  | 0.8 |

Note: Adverse Reactions are reported using MedDRA version 13.1 and graded using NCI CTC version 3.0

\* Compilation of clinical and laboratory data

Infections occurred at a higher frequency in patients receiving ZALTRAP/FOLFIRI (46%, all grades; 12%, Grade 3-4) than in patients receiving placebo/FOLFIRI (33%, all grades;

7%, Grade 3–4), including urinary tract infection, nasopharyngitis, upper respiratory tract infection, pneumonia, catheter site infection, and tooth infection.

In patients with mCRC, severe hypersensitivity reactions have been reported with ZALTRAP/FOLFIRI (0.3%) and placebo/FOLFIRI (0.5%).

In patients with mCRC, venous thromboembolic events (VTE), consisting primarily of deep venous thrombosis and pulmonary embolism, occurred in 9% of patients treated with ZALTRAP/FOLFIRI and 7% of patients treated with placebo/FOLFIRI. Grade 3–4 VTE occurred in 8% of patients treated with ZALTRAP/FOLFIRI and in 6% of patients treated with placebo/FOLFIRI. Pulmonary embolism occurred in 5% of patients treated with ZALTRAP/FOLFIRI and 3.4% of patients treated with placebo/FOLFIRI.

## 6.2 Immunogenicity

As with all therapeutic proteins, there is a potential for immunogenicity. The detection of antibody formation is highly dependent on the sensitivity and specificity of the assay. Additionally, the observed incidence of antibody (including neutralizing antibody) positivity in an assay may be influenced by several factors including assay methodology, sample handling, timing of sample collection, concomitant medications, and underlying disease. For these reasons, comparison of the incidence of antibodies in the studies described below with the incidence of antibodies in other studies or to other products may be misleading.

In patients with various cancers across 15 studies, 1.4% (41/2862) of patients tested positive for antiproduct antibody (APA) at baseline. The incidence of APA development was 3.1% (53/1687) in patients receiving intravenous ziv-aflibercept and 1.7% (19/1134) in patients receiving placebo. Among patients who tested positive for APA and had sufficient samples for further testing, neutralizing antibodies were detected in 17 of 48 ziv-aflibercept-treated patients and in 2 of 40 patients receiving placebo.

The mean free ziv-aflibercept trough concentrations were lower in patients with positive neutralizing antibodies than in the overall population. The impact of neutralizing antibodies on efficacy and safety could not be assessed based on limited available data.

## 6.3 Postmarketing Experience

The following adverse reactions have been identified during postapproval use of ZALTRAP. Because these reactions are reported voluntarily from a population of uncertain size, it is not always possible to reliably estimate their frequency or establish a causal relationship to drug exposure.

*Musculoskeletal and connective tissue disorders:* Osteonecrosis of the jaw

*Cardiac disorders:* Cardiac failure, ejection fraction decreased

*Vascular disorders:* Arterial (including aortic) aneurysms, dissections, and rupture

## 7 DRUG INTERACTIONS

No dedicated drug-drug interaction studies have been conducted for ZALTRAP. No clinically important pharmacokinetic interactions were found between ziv-aflibercept and irinotecan/SN-38 or fluorouracil [see *Clinical Pharmacology* (12.3)].

## **8 USE IN SPECIFIC POPULATIONS**

### **8.1 Pregnancy**

#### Risk Summary

Based on findings from animal reproduction studies and its mechanism of action [see *Clinical Pharmacology (12.1)*], ZALTRAP can cause fetal harm when administered to pregnant women. There is insufficient data in pregnant women exposed to ZALTRAP to assess the risks. Administration of ziv-aflibercept during the period of organogenesis was embryotoxic and teratogenic in rabbits at exposure levels approximately 0.3 times the human exposure at the 4 mg per kg dose (see *Data*). Advise pregnant women of the potential risk to a fetus.

In the U.S. general population, the estimated background risk of major birth defects and miscarriage in clinically recognized pregnancies is 2% to 4% and 15% to 20%, respectively.

#### Data

##### Animal data

In pregnant rabbits, administration of ziv-aflibercept during the period of organogenesis resulted in an increase in postimplantation loss and external (including anasarca, umbilical hernia, diaphragmatic hernia and gastroschisis, cleft palate, ectrodactyly, and anal atresia), visceral (heart, great vessels, and arteries), and skeletal fetal malformations (including fused vertebrae, sternbrae, and ribs, supernumerary arches and ribs, and incomplete ossification) at doses greater than or equal to 3 mg per kg, administered once every 3 days (approximately 0.3 times the human exposure at the 4 mg per kg dose based on AUC).

### **8.2 Lactation**

#### Risk Summary

There are no data on the presence of ziv-aflibercept in human milk, or the effects of ziv-aflibercept on the breastfed infant or on milk production. Because of the potential for serious adverse reactions in breastfed infants, advise women not to breastfeed during treatment with ZALTRAP and for 1 month following the last dose.

### **8.3 Females and Males of Reproductive Potential**

ZALTRAP can cause fetal harm when administered to a pregnant woman [see *Use in Specific Populations (8.1)*].

#### Pregnancy Testing

Verify the pregnancy status in females of reproductive potential prior to initiating ZALTRAP [see *Use in Specific Populations (8.1)*].

#### Contraception

##### *Females*

Based on data from animal studies and its mechanism of action, ZALTRAP can cause fetal harm when administered to pregnant women [see *Use in Specific Populations (8.1)*].

Advise female patients of reproductive potential to use effective contraception during treatment with ZALTRAP and for 3 months following the last dose.

### Infertility

Advise female and male patients of reproductive potential that ZALTRAP may impair reproductive function and fertility [see *Nonclinical Toxicology (13.1)*].

## **8.4 Pediatric Use**

The safety and effectiveness in pediatric patients have not been established. Safety and efficacy were assessed, but not established in a dose-escalation, safety, and tolerability study (NCT00622414) in 21 patients with solid tumors 2 to 21 years of age (median age 12.9). The mean elimination half-life of free ziv-aflibercept determined after the first dose in 8 pediatric patients aged 5 to 17 years was within the range of values previously observed in adults. The maximum tolerated dose based on body weight in these pediatric patients was lower than the dose known to be safe and effective in adults with mCRC.

### Juvenile Animal Toxicity Data

Weekly/every-two-weeks intravenous administration of ziv-aflibercept at dose of 3 mg per kg (approximately 0.6 times the human exposure at the 4 mg per kg dose based on AUC) to growing young adult (sexually mature) cynomolgus monkeys for up to 6 months resulted in changes in the bone (effects on growth plate and the axial and appendicular skeleton), nasal cavity (atrophy/loss of the septum and/or turbinates), kidney (glomerulopathy with inflammation), ovary (decreased number of maturing follicles, granulosa cells, and/or theca cells), and adrenal gland (decreased vacuolation with inflammation). In another study in sexually immature cynomolgus monkeys (treated intravenously for 3 months), there were similar effects. The skeletal and nasal cavity effects were not reversible after a post-dosing recovery period.

## **8.5 Geriatric Use**

Of the 611 patients with mCRC, patients treated with ZALTRAP/FOLFIRI, 205 (34%) were 65 years or older, and 33 (5%) were 75 years or older. Elderly patients ( $\geq 65$  years of age) experienced higher incidences ( $\geq 5\%$ ) of diarrhea, dizziness, asthenia, weight decrease, and dehydration when compared to younger patients. Monitor elderly patients more closely for diarrhea and dehydration [see *Warnings and Precautions (5.9)*].

The effect of ZALTRAP on overall survival was similar in patients  $< 65$  years old and  $\geq 65$  years old who received ZALTRAP/FOLFIRI.

## **8.6 Renal Impairment**

No dosage modification is recommended for patients with renal impairment [see *Clinical Pharmacology (12.3)*].

## **8.7 Hepatic Impairment**

No dosage modification is recommended for patients with mild (total bilirubin  $> 1$  to 1.5 times upper limit normal [ULN] and any aspartate transaminase [AST]) and moderate (total bilirubin  $> 1.5$  to 3 times ULN and any AST) hepatic impairment [see *Clinical Pharmacology (12.3)*]. ZALTRAP has not been studied in patients with severe hepatic

impairment (total bilirubin >3 times ULN and any AST).

## **11 DESCRIPTION**

Ziv-aflibercept is a vascular endothelial growth factor inhibitor. It is a recombinant fusion protein consisting of Vascular Endothelial Growth Factor (VEGF)-binding portions from the extracellular domains of human VEGF Receptors 1 and 2 fused to the Fc portion of the human IgG1. Ziv-aflibercept is produced by recombinant DNA technology in a Chinese hamster ovary (CHO) K-1 mammalian expression system. Ziv-aflibercept is a dimeric glycoprotein with a protein molecular weight of 97 kilodaltons (kDa) and contains glycosylation, constituting an additional 15% of the total molecular mass, resulting in a total molecular weight of 115 kDa.

ZALTRAP (ziv-aflibercept) injection is a sterile, clear, colorless to pale-yellow, non-pyrogenic, preservative-free, solution for intravenous use. ZALTRAP is supplied in single-dose vials of 100 mg/4 mL and 200 mg/8 mL formulated as 25 mg/mL ziv-aflibercept in polysorbate 20 (1 mg/mL), sodium chloride (5.84 mg/mL), sodium citrate (1.45 mg/mL), sodium phosphate (0.8 mg/mL), and sucrose (200 mg/mL), in Water for Injection, USP, at a pH of 6.2.

## **12 CLINICAL PHARMACOLOGY**

### **12.1 Mechanism of Action**

Ziv-aflibercept acts as a soluble receptor that binds to human VEGF-A (equilibrium dissociation constant  $K_D$  of 0.5 pM for VEGF-A<sub>165</sub> and 0.36 pM for VEGF-A<sub>121</sub>), to human VEGF-B ( $K_D$  of 1.92 pM), and to human PlGF ( $K_D$  of 39 pM for PlGF-2). By binding to these endogenous ligands, ziv-aflibercept can inhibit the binding and activation of their cognate receptors. This inhibition can result in decreased neovascularization and decreased vascular permeability.

In animals, ziv-aflibercept was shown to inhibit the proliferation of endothelial cells, thereby inhibiting the growth of new blood vessels. Ziv-aflibercept inhibited the growth of xenotransplanted colon tumors in mice.

### **12.2 Pharmacodynamics**

#### Cardiac Electrophysiology

The effect of 6 mg per kg intravenous ZALTRAP every three weeks on QTc interval was evaluated in 87 patients with solid tumors in a randomized, placebo-controlled study. No large changes in the mean QT interval from baseline (i.e., greater than 20 ms as corrected for placebo) based on Fridericia correction method were detected in the study. However, a small increase in the mean QTc interval (i.e., less than 10 ms) cannot be excluded due to limitations of the study design.

### **12.3 Pharmacokinetics**

Plasma concentrations of free and VEGF-bound ziv-aflibercept were measured using specific enzyme-linked immunosorbent assays (ELISA). Free ziv-aflibercept concentrations appear to exhibit linear pharmacokinetics in the dose range of 2 mg per kg to 9 mg per kg. Steady state concentrations of free ziv-aflibercept were reached by

the second dose. The accumulation ratio for free ziv-aflibercept was approximately 1.2 after administration of 4 mg per kg every two weeks.

### Elimination

Following a dose of 4 mg per kg every two weeks administered intravenously, the elimination half-life of free ziv-aflibercept was approximately 6 days (range 4–7 days).

### Specific Populations

Based on a population pharmacokinetic analysis, age, race, and sex did not have a clinically important effect on the exposure of free ziv-aflibercept. Patients weighing  $\geq 100$  kg had a 29% increase in systemic exposure compared to patients weighing 50 to 100 kg.

#### Patients with hepatic impairment

Based on a population pharmacokinetic analysis which included patients with mild (total bilirubin  $>1$  to 1.5 times ULN and any AST,  $n=63$ ) and moderate (total bilirubin  $>1.5$  to 3 times ULN and any AST,  $n=5$ ) hepatic impairment, there was no effect of total bilirubin, AST, and alanine aminotransferase on the clearance of free ziv-aflibercept. There are no data available for patients with severe hepatic impairment (total bilirubin  $>3$  times ULN and any AST).

#### Patients with renal impairment

Based on a population pharmacokinetic analysis which included patients with mild ( $CL_{CR}$  50–80 mL/min,  $n=549$ ), moderate ( $CL_{CR}$  30–50 mL/min,  $n=96$ ), and severe renal impairment ( $CL_{CR}<30$  mL/min,  $n=5$ ), there was no clinically important effect of creatinine clearance on the clearance of free ziv-aflibercept.

### Drug Interaction Studies

No clinically meaningful interaction was found between ziv-aflibercept and irinotecan or fluorouracil based on cross-study comparisons and population pharmacokinetic analyses.

## **13 NONCLINICAL TOXICOLOGY**

### **13.1 Carcinogenesis, Mutagenesis, Impairment of Fertility**

No studies have been conducted to evaluate carcinogenicity or mutagenicity of ziv-aflibercept.

Ziv-aflibercept impaired reproductive function and fertility in monkeys. In a 6-month repeat-dose toxicology study in sexually mature monkeys, ziv-aflibercept inhibited ovarian function and follicular development, as evidenced by: decreased ovary weight, decreased amount of luteal tissue, decreased number of maturing follicles, atrophy of uterine endometrium and myometrium, vaginal atrophy, abrogation of progesterone peaks and menstrual bleeding. Alterations in sperm morphology and decreased sperm motility were present in male monkeys. These effects were observed at all doses tested including the lowest dose tested, 3 mg per kg. Reversibility was observed within 18 weeks after cessation of treatment. Systemic exposure (AUC) with a 3 mg per kg per dose in monkeys was approximately 0.6 times the AUC in patients at the 4 mg per kg dose.

## 13.2 Animal Toxicology and/or Pharmacology

Repeated administration of ziv-aflibercept resulted in a delay in wound healing in rabbits. In full-thickness excisional and incisional skin wound models, ziv-aflibercept administration reduced fibrous response, neovascularization, epidermal hyperplasia/re-epithelialization, and tensile strength.

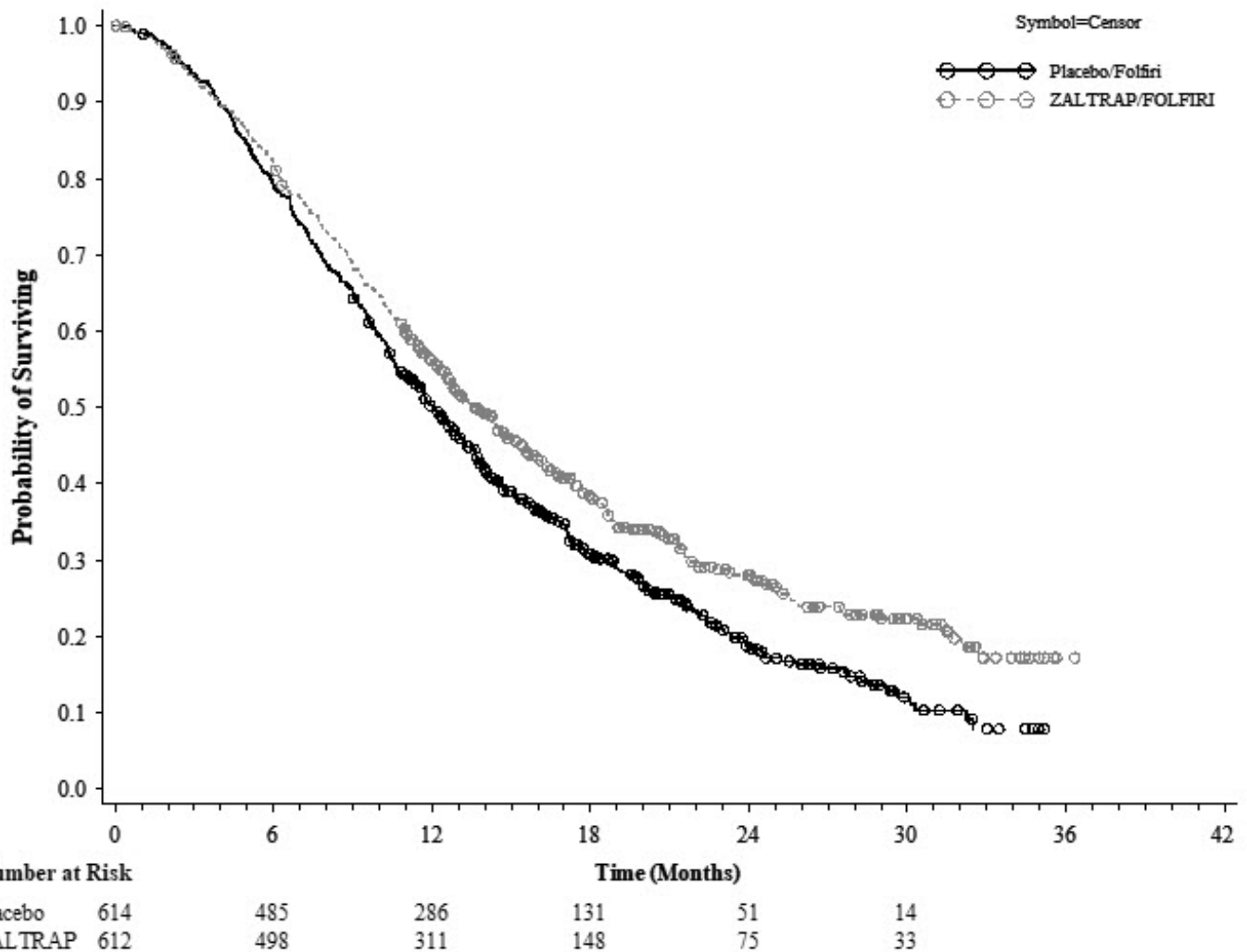
## 14 CLINICAL STUDIES

The efficacy of ZALTRAP was evaluated in VELOUR (NCT00561470), a randomized (1:1), double-blind, placebo-controlled study in patients with mCRC who are resistant to or have progressed during or within 6 months of receiving oxaliplatin-based combination chemotherapy, with or without prior bevacizumab. Patients were randomized to receive either ZALTRAP 4 mg per kg intravenously over 1 hour on day 1 or placebo in combination with FOLFIRI (irinotecan 180 mg/m<sup>2</sup> intravenously over 90 minutes and leucovorin [dl racemic] 400 mg/m<sup>2</sup> intravenously over 2 hours at the same time on day 1 using a Y-line, followed by fluorouracil 400 mg/m<sup>2</sup> as an intravenous bolus and then by fluorouracil 2400 mg/m<sup>2</sup> as a continuous intravenous infusion over 46 hours). The treatment cycles on both arms were repeated every 2 weeks. Patients were treated until disease progression or unacceptable toxicity. Randomization was stratified by the Eastern Cooperative Oncology Group performance status (PS) (0 versus 1 versus 2) and according to prior therapy with bevacizumab (yes or no). The major efficacy outcome measure was overall survival (OS). Additional efficacy outcome measures were progression-free survival (PFS) and overall response rate (ORR).

Demographics characteristics were similar between treatment arms. A total of 1226 patients were randomized, 612 to the ZALTRAP arm and 614 to the placebo arm. The median age was 61 years, 59% were men, 87% were White, 7% were Asian, 3.5% were Black, and 98% had a baseline ECOG PS of 0 or 1. Among the 1226 randomized patients, 89% and 90% of patients treated with placebo/FOLFIRI and ZALTRAP/FOLFIRI, respectively, received prior oxaliplatin-based combination chemotherapy in the metastatic/advanced setting. A total of 346 patients (28%) received bevacizumab in combination with the prior oxaliplatin-based treatment.

Efficacy results are summarized in Figure 1 and Table 2.

### **Figure 1: Kaplan-Meier Curves of Overall Survival for VELOUR**



**Table 2: Main Efficacy Outcome Measures for VELOUR\***

|   | <b>ZALTRAP/FOLFIRI<br/>N=612</b> | <b>Placebo/FOLFIRI<br/>N=614</b> |
|---|----------------------------------|----------------------------------|
| <b>Overall Survival</b>                         |                                  |                                  |
| Number of deaths, n (%)                         | 403 (65.8%)                      | 460 (74.9%)                      |
| Median overall survival (95% CI) (months)       | 13.50 (12.52, 14.95)             | 12.06 (11.07, 13.08)             |
| Stratified Hazard ratio (95% CI)                | 0.817 (0.714, 0.935)             |                                  |
| Stratified Log-Rank test p-value                | 0.0032                           |                                  |
| <b>Progression Free Survival (PFS)*</b>         |                                  |                                  |
| Number of events, n (%)                         | 393 (64.2%)                      | 454 (73.9%)                      |
| Median PFS (95% CI) (months)                    | 6.90 (6.51, 7.20)                | 4.67 (4.21, 5.36)                |
| Stratified Hazard ratio (95% CI)                | 0.758 (0.661, 0.869)             |                                  |
| Stratified Log-Rank test p-value†               | 0.00007                          |                                  |
| <b>Overall Response Rate (ORR)</b>              |                                  |                                  |
| ORR (CR+PR) (95% CI)‡                           | 19.8% (16.4%, 23.2%)             | 11.1% (8.5%, 13.8%)              |
| Stratified Cochran-Mantel-Haenszel test p-value | 0.0001                           |                                  |

\* PFS (based on tumor assessment by the IRC): Significance threshold is set to 0.0001.

† Stratified on ECOG Performance Status (0 vs 1 vs 2) and Prior Bevacizumab (yes vs no)



‡ Overall objective response rate by IRC

Planned subgroup analyses for overall survival based on stratification factors at randomization yielded an HR of 0.86 (95% CI: 0.68, 1.1) in patients who received prior bevacizumab and an HR of 0.79 (95% CI: 0.67, 0.93) in patients without prior bevacizumab exposure.

## **16 HOW SUPPLIED/STORAGE AND HANDLING**

ZALTRAP (ziv-aflibercept) injection is a clear, colorless to pale-yellow solution supplied in single-dose vials with a concentration of 25 mg/mL.

NDC 0024-5840-01: carton containing one single-dose vial of 100 mg/4 mL (25 mg/mL)

NDC 0024-5841-01: carton containing one single-dose vial of 200 mg/8 mL (25 mg/mL)

Store ZALTRAP vials in a refrigerator at 2°C to 8°C (36°F to 46°F). Keep the vials in the original outer carton to protect from light. Discard unused portion.

## **17 PATIENT COUNSELING INFORMATION**

### Hemorrhage

- Inform patients that ZALTRAP can cause severe bleeding and advise patients to contact their healthcare provider for bleeding or symptoms of bleeding, including lightheadedness [see *Warnings and Precautions (5.1)*].

### Gastrointestinal Perforation and Fistula Formation

- Advise patients to immediately contact their healthcare provider for signs and symptoms of gastrointestinal perforation or fistula [see *Warnings and Precautions (5.2, 5.4)*].

### Impaired Wound Healing

- Advise patients that ZALTRAP may impair wound healing. Instruct patients to discuss any planned surgical procedure (including tooth extractions) with all their healthcare providers [see *Warnings and Precautions (5.3)*].

### Hypertension

- Inform patients that ZALTRAP can cause or exacerbate existing hypertension. Advise patients to undergo routine blood pressure monitoring and to contact their healthcare provider if blood pressure is elevated or if symptoms from hypertension occur including severe headache, lightheadedness, or neurologic symptoms [see *Warnings and Precautions (5.5)*].

### Arterial Thromboembolic Events

- Inform patients of an increased risk of ATE [see *Warnings and Precautions (5.6)*].

### Proteinuria

- Advise patients that they will need to undergo regular laboratory tests to monitor protein in their urine [see *Warnings and Precautions (5.7)*].

### Neutropenia and Neutropenic Complications

- Advise patients to notify their healthcare provider of fever or other signs of infection [see *Warnings and Precautions (5.8)*].

#### Diarrhea and Dehydration

- Advise patients to notify their healthcare provider of severe diarrhea, vomiting, or severe abdominal pain [see *Warnings and Precautions (5.9)*].

#### Posterior Reversible Leukoencephalopathy Syndrome

- Advise patients to immediately contact their healthcare provider for new onset or worsening neurological function [see *Warnings and Precautions (5.10)*].

#### Embryo-Fetal Toxicity

Advise females of reproductive potential:

- of the potential risk to a fetus. Advise females to inform their healthcare provider of a known or suspected pregnancy [see *Warnings and Precautions (5.11), Use in Specific Populations (8.1)*].
- to use effective contraception during treatment with ZALTRAP and for 3 months following the last dose [see *Use in Specific Populations (8.3)*].

#### Lactation

- Advise women not to breastfeed during treatment with ZALTRAP and for 1 month following the last dose [see *Use in Specific Populations (8.2)*].

#### Aneurysms and Artery Dissections

- Advise patients to notify their healthcare provider if they have or have had an aneurysm (swelling/enlargement and weakening of part of a blood vessel) or artery dissection (tear in a blood vessel wall) [see *Adverse Reactions (6.3)*].

Manufactured by:  
sanofi-aventis U.S. LLC  
Bridgewater, NJ 08807  
A SANOFI COMPANY  
U.S. License No. 1752

ZALTRAP is a registered trademark of Regeneron Pharmaceuticals, Inc.

©2023 sanofi-aventis U.S. LLC

### **PRINCIPAL DISPLAY PANEL - 100 mg/4 mL Vial Carton**

NDC 0024-5840-01

ZALTRAP®  
(ziv-aflibercept)  
Injection for  
Intravenous Infusion

100 mg/4 mL  
(25 mg/mL)

For intravenous infusion only.  
Not to be administered by

other routes.  
Hyperosmotic, must be diluted.

Single-dose vial.  
Discard unused portion

Rx ONLY

SANOFI



**PRINCIPAL DISPLAY PANEL - 200 mg/8 mL Vial Carton**

NDC 0024-5841-01

ZALTRAP®

(ziv-aflibercept)

Injection for

Intravenous Infusion

200 mg/8 mL

(25 mg/mL)

For intravenous infusion only.

Not to be administered by  
other routes.

Hyperosmotic, must be diluted.

Single-dose vial.

Discard unused portion

Rx ONLY

SANOFI



## ZALTRAP

ziv-aflibercept solution, concentrate

### Product Information

|                                |                         |                           |               |
|--------------------------------|-------------------------|---------------------------|---------------|
| <b>Product Type</b>            | HUMAN PRESCRIPTION DRUG | <b>Item Code (Source)</b> | NDC:0024-5840 |
| <b>Route of Administration</b> | INTRAVENOUS             |                           |               |

**Active Ingredient/Active Moiety**

| <b>Ingredient Name</b>  | <b>Basis of Strength</b> | <b>Strength</b> |
|---|--------------------------|-----------------|
| <b>AFLIBERCEPT</b> (UNII: 15C2VL427D) (AFLIBERCEPT - UNII:15C2VL427D) | AFLIBERCEPT              | 100 mg in 4 mL  |

**Inactive Ingredients**

| <b>Ingredient Name</b>   | <b>Strength</b> |
|--|-----------------|
| <b>SUCROSE</b> (UNII: C151H8M554)                                  |                 |
| <b>SODIUM CHLORIDE</b> (UNII: 451W47IQ8X)                          |                 |
| <b>TRISODIUM CITRATE DIHYDRATE</b> (UNII: B22547B95K)              |                 |
| <b>CITRIC ACID MONOHYDRATE</b> (UNII: 2968PHW8QP)                  |                 |
| <b>POLYSORBATE 20</b> (UNII: 7T1F30V5YH)                           |                 |
| <b>SODIUM PHOSPHATE, DIBASIC, HEPTAHYDRATE</b> (UNII: 70WT22SF4B)  |                 |
| <b>SODIUM PHOSPHATE, MONOBASIC, MONOHYDRATE</b> (UNII: 593YOG76RN) |                 |
| <b>SODIUM HYDROXIDE</b> (UNII: 55X04QC32I)                         |                 |
| <b>HYDROCHLORIC ACID</b> (UNII: QTT17582CB)                        |                 |
| <b>WATER</b> (UNII: 059QF0KO0R)                                    |                 |

**Packaging**

| <b>#</b> | <b>Item Code</b> | <b>Package Description</b>                        | <b>Marketing Start Date</b> | <b>Marketing End Date</b> |
|----------|------------------|---|-----------------------------|---------------------------|
| 1        | NDC:0024-5840-01 | 1 in 1 CARTON                                     | 08/03/2012                  |                           |
| 1        |                  | 4 mL in 1 VIAL; Type 0: Not a Combination Product |                             |                           |
| 2        | NDC:0024-5840-03 | 3 in 1 CARTON                                     | 08/03/2012                  | 11/27/2019                |
| 2        |                  | 4 mL in 1 VIAL; Type 0: Not a Combination Product |                             |                           |

**Marketing Information**

| <b>Marketing Category</b> | <b>Application Number or Monograph Citation</b> | <b>Marketing Start Date</b> | <b>Marketing End Date</b> |
|---------------------------|---|-----------------------------|---------------------------|
| BLA                       | BLA125418                                       | 08/03/2012                  |                           |

**ZALTRAP**

ziv-aflibercept solution, concentrate

**Product Information**

|                                |                         |                           |               |
|--------------------------------|-------------------------|---------------------------|---------------|
| <b>Product Type</b>            | HUMAN PRESCRIPTION DRUG | <b>Item Code (Source)</b> | NDC:0024-5841 |
| <b>Route of Administration</b> | INTRAVENOUS             |                           |               |

| <b>Active Ingredient/Active Moiety</b>                         |  |   |                          |                    |
|--|--|---|--------------------------|--------------------|
| <b>Ingredient Name</b>   |  |   | <b>Basis of Strength</b> | <b>Strength</b>    |
| AFLIBERCEPT (UNII: 15C2VL427D) (AFLIBERCEPT - UNII:15C2VL427D) |  |   | AFLIBERCEPT              | 200 mg in 8 mL     |
| <b>Inactive Ingredients</b>                                    |  |   |                          |                    |
| <b>Ingredient Name</b>   |  |   |                          | <b>Strength</b>    |
| SUCROSE (UNII: C151H8M554)                                     |  |   |                          |                    |
| SODIUM CHLORIDE (UNII: 451W47IQ8X)                             |  |   |                          |                    |
| TRISODIUM CITRATE DIHYDRATE (UNII: B22547B95K)                 |  |   |                          |                    |
| CITRIC ACID MONOHYDRATE (UNII: 2968PHW8QP)                     |  |   |                          |                    |
| POLYSORBATE 20 (UNII: 7T1F30V5YH)                              |  |   |                          |                    |
| SODIUM PHOSPHATE, DIBASIC, HEPTAHYDRATE (UNII: 70WT22SF4B)     |  |   |                          |                    |
| SODIUM PHOSPHATE, MONOBASIC, MONOHYDRATE (UNII: 593YOG76RN)    |  |   |                          |                    |
| SODIUM HYDROXIDE (UNII: 55X04QC32I)                            |  |   |                          |                    |
| HYDROCHLORIC ACID (UNII: QTT17582CB)                           |  |   |                          |                    |
| WATER (UNII: 059QF0KO0R)                                       |  |   |                          |                    |
| <b>Packaging</b>   |  |   |                          |                    |
| #  | Item Code                                | Package Description                               | Marketing Start Date     | Marketing End Date |
| 1  | NDC:0024-5841-01                         | 1 in 1 CARTON                                     | 08/03/2012               |                    |
| 1  |  | 8 mL in 1 VIAL; Type 0: Not a Combination Product |                          |                    |
| <b>Marketing Information</b>                                   |  |   |                          |                    |
| Marketing Category   | Application Number or Monograph Citation | Marketing Start Date                              | Marketing End Date       |                    |
| BLA  | BLA125418                                | 08/03/2012  |                          |                    |

**Labeler** - sanofi-aventis U.S. LLC (824676584)

### Establishment

| Name                            | Address | ID/FEI    | Business Operations  |
|---------------------------------|---------|-----------|--|
| Regeneron Pharmaceuticals, Inc. |         | 945589711 | ANALYSIS(0024-5840, 0024-5841) , API MANUFACTURE(0024-5840, 0024-5841) |

### Establishment

| Name                            | Address | ID/FEI    | Business Operations   |
|---------------------------------|---------|-----------|---|
| Sanofi-Aventis Deutschland GmbH |         | 313218430 | ANALYSIS(0024-5840, 0024-5841) , LABEL(0024-5840, 0024-5841) , MANUFACTURE(0024-5840, 0024-5841) , PACK(0024-5840, 0024-5841) |