

DOXORUBICIN HYDROCHLORIDE- doxorubicin hydrochloride injectable, liposomal
Dr. Reddy's Laboratories Inc

HIGHLIGHTS OF PRESCRIBING INFORMATION

These highlights do not include all the information needed to use DOXORUBICIN HYDROCHLORIDE LIPOSOME INJECTION safely and effectively.
See full prescribing information for doxorubicin hydrochloride liposome injection, DOXORUBICIN HYDROCHLORIDE liposome injection, for intravenous infusion
Initial U.S. Approval: 1995

WARNING: CARDIOMYOPATHY and INFUSION RELATED REACTIONS

See full prescribing information for complete boxed warning.

- Myocardial damage may lead to congestive heart failure and may occur as the total cumulative dose of doxorubicin HCl approaches 550 mg/m². The risk of cardiomyopathy may be increased at lower cumulative doses with mediastinal irradiation (5.1).
- Acute infusion-related reactions occurred in 11% of patients with solid tumors. Serious, life-threatening, and fatal infusion reactions have been reported. Medications/emergency equipment to treat such reactions should be available for immediate use (5.2).

----- **RECENT MAJOR CHANGES** -----

Boxed Warning 01/2015
Dosage and Administration (2) 01/2015
Contraindications (4) 01/2015
Warnings and Precautions (5) 01/2015

----- **INDICATIONS AND USAGE** -----

Doxorubicin hydrochloride liposome injection is an anthracycline topoisomerase II inhibitor indicated for:

• **Ovarian cancer (1.1)**

After failure of platinum-based chemotherapy.

• **AIDS-related Kaposi's Sarcoma (1.2)**

After failure of prior systemic chemotherapy or intolerance to such therapy.

• **Multiple Myeloma (1.3)**

In combination with bortezomib in patients who have not previously received bortezomib and have received at least one prior therapy. Doxorubicin hydrochloride is an anthracycline topoisomerase inhibitor indicated for:

• **Ovarian cancer (1.1)**

After failure of platinum-based chemotherapy.

• **AIDS-related Kaposi's Sarcoma (1.2)**

After failure of prior systemic chemotherapy or intolerance to such therapy

----- **DOSAGE AND ADMINISTRATION** -----

Administer doxorubicin hydrochloride liposome injection at an initial rate of 1 mg/min to minimize the risk of infusion reactions. If no infusion related reactions occur, increase rate of infusion to complete administration over 1 hour. Do not administer as bolus injection or undiluted solution (2).

- **Ovarian cancer:** 50 mg/m² IV every 4 weeks (2.2)
- **AIDS-related Kaposi's Sarcoma:** 20 mg/m² IV every 3 weeks (2.3)
- **Multiple Myeloma:** 30 mg/m² IV on day 4 following bortezomib (2.4)

----- **DOSAGE FORMS AND STRENGTHS** -----

Doxorubicin hydrochloride (HCl) liposomal injection: Single-dose vials: 20 mg/10 mL and 50 mg/25 mL (3)

----- **CONTRAINDICATIONS** -----

Hypersensitivity reactions to doxorubicin HCl or the components of doxorubicin hydrochloride liposome injection (4, 5.2)

----- **WARNINGS AND PRECAUTIONS** -----

- Hand-Foot Syndrome may occur. Dose modification or discontinuation may be required (5.3)
- Embryofetal Toxicity: Can cause fetal harm. Advise of potential risk to a fetus. Use effective contraception (5.5, 8.1, 8.3)

----- **ADVERSE REACTIONS** -----

Most common adverse reactions (>20%) are asthenia, fatigue, fever, anorexia, nausea, vomiting, stomatitis, diarrhea, constipation, hand and foot syndrome, rash, neutropenia, thrombocytopenia, and anemia (6).

To report SUSPECTED ADVERSE REACTIONS, contact Dr. Reddy's Laboratories Inc., at 1-888-375-3784 or

Lactation: Discontinue breastfeeding (8.2).

See 17 for PATIENT COUNSELING INFORMATION.

Revised: 8/2017

FULL PRESCRIBING INFORMATION: CONTENTS*

WARNING—CARDIOMYOPATHY and INFUSION-RELATED REACTIONS

1 INDICATIONS AND USAGE

- 1.1 Ovarian Cancer**
- 1.2 AIDS-Related Kaposi's Sarcoma**
- 1.3 Multiple Myeloma**

2 DOSAGE AND ADMINISTRATION

- 2.1 Important Use Information**
- 2.2 Ovarian Cancer**
- 2.3 AIDS-Related Kaposi's Sarcoma**
- 2.4 Multiple Myeloma**
- 2.5 Dose Modifications for Adverse Reactions**
- 2.6 Preparation and Administration**
- 2.7 Procedure for Proper Handling and Disposal**

3 DOSAGE FORMS AND STRENGTHS

4 CONTRAINDICATIONS

5 WARNINGS AND PRECAUTIONS

- 5.1 Cardiomyopathy**
- 5.2 Infusion-Related Reactions**
- 5.3 Hand-Foot Syndrome (HFS)**
- 5.4 Secondary Oral Neoplasms**
- 5.5 Embryofetal Toxicity**

6 ADVERSE REACTIONS

- 6.1 Adverse Reactions in Clinical Trials**
- 6.2 Postmarketing Experience**

7 DRUG INTERACTIONS

8 USE IN SPECIFIC POPULATIONS

- 8.1 Pregnancy**
- 8.2 Lactation**
- 8.3 Females and Males of Reproductive Potential**
- 8.4 Pediatric Use**
- 8.5 Geriatric Use**
- 8.6 Hepatic Impairment**

10 OVERDOSAGE

11 DESCRIPTION

12 CLINICAL PHARMACOLOGY

- 12.1 Mechanism of Action**
- 12.3 Pharmacokinetics**

13 NONCLINICAL TOXICOLOGY

- 13.1 Carcinogenesis, Mutagenesis, Impairment of Fertility**

14 CLINICAL STUDIES

- 14.1 Ovarian Cancer**
- 14.2 AIDS-Related Kaposi's Sarcoma**
- 14.3 Multiple Myeloma**

15 REFERENCES

16 HOW SUPPLIED/STORAGE AND HANDLING

17 PATIENT COUNSELING INFORMATION

* Sections or subsections omitted from the full prescribing information are not listed.

FULL PRESCRIBING INFORMATION

WARNING—CARDIOMYOPATHY and INFUSION-RELATED REACTIONS

Doxorubicin hydrochloride liposome injection can cause myocardial damage, including congestive heart failure, as the total cumulative dose of doxorubicin HCl approaches 550 mg/m². In a clinical study of 250 patients with advanced cancer who were treated with doxorubicin hydrochloride liposome injection, the risk of cardiotoxicity was 11% when the cumulative anthracycline dose was between 450 to 550 mg/m². Prior use of other anthracyclines or anthracenediones should be included in calculations of total cumulative dosage. The risk of cardiomyopathy may be increased at lower cumulative doses in patients with prior mediastinal irradiation [see Warnings and Precautions (5.1)]. Acute infusion-related reactions consisting of, but not limited to, flushing, shortness of breath, facial swelling, headache, chills, back pain, tightness in the chest or throat, and/or hypotension occurred in 11% of patients with solid tumors treated with doxorubicin hydrochloride liposome injection. Serious, life-threatening and fatal infusion reactions have been reported [see Dosage and Administration (2.6) and Warnings and Precautions (5.2)].

1 INDICATIONS AND USAGE

1.1 Ovarian Cancer

Doxorubicin hydrochloride liposome injection is indicated for the treatment of patients with ovarian cancer whose disease has progressed or recurred after platinum-based chemotherapy.

1.2 AIDS-Related Kaposi's Sarcoma

Doxorubicin hydrochloride liposome injection is indicated for the treatment of AIDS-related Kaposi's sarcoma in patients after failure of prior systemic chemotherapy or intolerance to such therapy.

1.3 Multiple Myeloma

Doxorubicin hydrochloride liposome injection, in combination with bortezomib, is indicated for the treatment of patients with multiple myeloma who have not previously received bortezomib and have received at least one prior therapy.

2 DOSAGE AND ADMINISTRATION

2.1 Important Use Information

Do not substitute doxorubicin hydrochloride liposome injection for doxorubicin HCl injection. **Do not administer** as an undiluted suspension or as an intravenous bolus [see Warnings and Precautions (5.2)].

2.2 Ovarian Cancer

The recommended dose of doxorubicin hydrochloride liposome injection is 50 mg/m² intravenously

over 60 minutes every 28 days until disease progression or unacceptable toxicity.

2.3 AIDS-Related Kaposi's Sarcoma

The recommended dose of doxorubicin hydrochloride liposome injection is 20 mg/m² intravenously over 60 minutes every 21 days until disease progression or unacceptable toxicity.

2.4 Multiple Myeloma

The recommended dose of doxorubicin hydrochloride liposome injection is 30 mg/m² intravenously over 60 minutes on day 4 of each 21-day cycle for eight cycles or until disease progression or unacceptable toxicity. Administer doxorubicin hydrochloride liposome injection after bortezomib on day 4 of each cycle [see Clinical Studies (14.3)].

2.5 Dose Modifications for Adverse Reactions

Do not increase doxorubicin hydrochloride liposome injection after a dose reduction for toxicity.

Table 1: Recommended Dose Modifications for Hand-Foot Syndrome, Stomatitis, or Hematologic Adverse Reactions

Toxicity	Dose Adjustment
Hand-Foot Syndrome (HFS)	
Grade 1: Mild erythema, swelling, or desquamation not interfering with daily activities	<ul style="list-style-type: none"> • If no previous Grade 3 or 4 HFS: no dose adjustment. • If previous Grade 3 or 4 HFS: delay dose up to 2 weeks, then decrease dose by 25%. • Delay dosing up to 2 weeks or until resolved to Grade 0-1.
Grade 2: Erythema, desquamation, or swelling interfering with, but not precluding normal physical activities; small blisters or ulcerations less than 2 cm in diameter	<ul style="list-style-type: none"> • Discontinue doxorubicin hydrochloride liposome injection if no resolution after 2 weeks. • If resolved to Grade 0-1 within 2 weeks: <ul style="list-style-type: none"> o <u>And</u> no previous Grade 3 or 4 HFS: continue treatment at previous dose. o <u>And</u> previous Grade 3 or 4 toxicity: decrease dose by 25%. • Delay dosing up to 2 weeks or until resolved to Grade 0-1, then decrease dose by 25%.
Grade 3: Blistering, ulceration, or swelling interfering with walking or normal daily activities; cannot wear regular clothing	<ul style="list-style-type: none"> • Delay dosing up to 2 weeks or until resolved to Grade 0-1, then decrease dose by 25%. • Discontinue doxorubicin hydrochloride liposome injection if no resolution after 2 weeks. • Delay dosing up to 2 weeks or until resolved to Grade 0-1, then decrease dose by 25%.
Grade 4: Diffuse or local process causing infectious complications, or a bed ridden state or hospitalization	<ul style="list-style-type: none"> • Delay dosing up to 2 weeks or until resolved to Grade 0-1, then decrease dose by 25%. • Discontinue doxorubicin hydrochloride liposome injection if no resolution after 2 weeks.
Stomatitis	
Grade 1: Painless ulcers, erythema, or mild soreness	<ul style="list-style-type: none"> • If no previous Grade 3 or 4 toxicity: no dose adjustment. • If previous Grade 3 or 4 toxicity: delay up to 2 weeks then decrease dose by 25%. • Delay dosing up to 2 weeks or until resolved to Grade 0-1. • Discontinue doxorubicin hydrochloride liposome injection if there is no resolution after 2 weeks.
Grade 2: Painful erythema, edema, or ulcers, but can eat	<ul style="list-style-type: none"> • If resolved to Grade 0-1 within 2 weeks: <ul style="list-style-type: none"> o <u>And</u> no previous Grade 3 or 4 stomatitis: resume treatment at previous dose.

Grade 3: Painful erythema, edema, or ulcers, and cannot eat	o <u>And</u> previous Grade 3 or 4 toxicity: decrease dose by 25%. • Delay dosing up to 2 weeks or until resolved to Grade 0-1. Decrease dose by 25% and return to original dose interval. • If after 2 weeks there is no resolution, discontinue doxorubicin hydrochloride liposome injection. • Delay dosing up to 2 weeks or until resolved to Grade 0-1. Decrease dose by 25% and return to original dose interval. If after 2 weeks there is no resolution, discontinue doxorubicin hydrochloride liposome injection.
Grade 4: Requires parenteral or enteral support	
Neutropenia or Thrombocytopenia	
Grade 1	No dose reduction
Grade 2	Delay until ANC \geq 1,500 and platelets \geq 75,000; resume treatment at previous dose
Grade 3	Delay until ANC \geq 1,500 and platelets \geq 75,000; resume treatment at previous dose
Grade 4	Delay until ANC \geq 1,500 and platelets \geq 75,000; resume at 25% dose reduction or continue previous dose with prophylactic granulocyte growth factor

Table 2: Recommended Dose Modifications of Doxorubicin Hydrochloride Liposome Injection for Toxicity When Administered in Combination With Bortezomib

Toxicity	Doxorubicin Hydrochloride Liposome Injection
Fever \geq 38°C and ANC $<$ 1,000/mm ³ On any day of drug administration after Day 1 of each cycle: • Platelet count $<$ 25,000/mm ³ • Hemoglobin $<$ 8 g/dL • ANC $<$ 500/mm ³	• Withhold dose for this cycle if before Day 4; • Decrease dose by 25%, if after Day 4 of previous cycle. • Withhold dose for this cycle if before Day 4; • Decrease dose by 25%, if after Day 4 of previous cycle AND if bortezomib is reduced for hematologic toxicity.
Grade 3 or 4 non-hematologic drug related toxicity	Do not dose until recovered to Grade $<$ 2, then reduce dose by 25%.

For neuropathic pain or peripheral neuropathy, no dosage adjustments are required for doxorubicin hydrochloride liposome injection. Refer to bortezomib manufacturer’s prescribing information.

2.6 Preparation and Administration

Preparation

Dilute doxorubicin hydrochloride liposome injection doses up to 90 mg in 250 mL of 5% Dextrose Injection, USP prior to administration. Dilute doses exceeding 90 mg in 500 mL of 5% Dextrose Injection, USP prior to administration. Refrigerate diluted doxorubicin hydrochloride liposome injection at 2°C to 8°C (36°F to 46°F) and administer within 24 hours.

Administration

Inspect parenteral drug products visually for particulate matter and discoloration prior to administration,

whenever solution and container permit. Do not use if a precipitate or foreign matter is present.

Do not use with in-line filters.

Administer the first dose of doxorubicin hydrochloride liposome injection at an initial rate of 1 mg/min. If no infusion-related adverse reactions are observed, increase the infusion rate to complete the administration of the drug over one hour [see Warnings and Precautions (5.2)].

Do not rapidly flush the infusion line. Do not mix doxorubicin hydrochloride liposome injection with other drugs.

Management of Suspected Extravasation

Discontinue doxorubicin hydrochloride liposome injection for burning or stinging sensation or other evidence indicating perivenous infiltration or extravasation. Manage confirmed or suspected extravasation as follows:

- Do not remove the needle until attempts are made to aspirate extravasated fluid
- Do not flush the line
- Avoid applying pressure to the site
- Apply ice to the site intermittently for 15 min 4 times a day for 3 days
- If the extravasation is in an extremity, elevate the extremity

2.7 Procedure for Proper Handling and Disposal

Doxorubicin hydrochloride liposome injection is a cytotoxic drug. Follow applicable special handling and disposal procedures.¹ If doxorubicin hydrochloride liposome injection comes into contact with skin or mucosa, immediately wash thoroughly with soap and water.

3 DOSAGE FORMS AND STRENGTHS

Doxorubicin hydrochloride liposome injection: Single-dose vials contain 20 mg/10 mL and 50 mg/25 mL doxorubicin HCl as a translucent, red liposomal dispersion.

4 CONTRAINDICATIONS

Doxorubicin hydrochloride liposome injection is contraindicated in patients who have a history of severe hypersensitivity reactions, including anaphylaxis, to doxorubicin HCl [see Warnings and Precautions (5.2)].

5 WARNINGS AND PRECAUTIONS

5.1 Cardiomyopathy

Doxorubicin HCl can result in myocardial damage, including acute left ventricular failure. The risk of cardiomyopathy with doxorubicin HCl is generally proportional to the cumulative exposure. The relationship between cumulative doxorubicin hydrochloride liposome injection dose and the risk of cardiac toxicity has not been determined.

In a clinical study in 250 patients with advanced cancer who were treated with doxorubicin hydrochloride liposome injection, the risk of cardiotoxicity was 11% when the cumulative anthracycline dose was between 450 to 550 mg/m². Cardiotoxicity was defined as >20% decrease in resting left ventricular ejection fraction (LVEF) from baseline where LVEF remained in the normal range or a >10% decrease in LVEF from baseline where LVEF was less than the institutional lower limit of normal. Two percent of patients developed signs and symptoms of congestive heart failure without documented evidence of cardiotoxicity.

Assess left ventricular cardiac function (e.g. MUGA or echocardiogram) prior to initiation of doxorubicin hydrochloride liposome injection, during treatment to detect acute changes, and after treatment to detect delayed cardiotoxicity. Administer doxorubicin hydrochloride liposome injection to patients with a history of cardiovascular disease only when the potential benefit of treatment outweighs the risk.

5.2 Infusion-Related Reactions

Serious and sometimes life-threatening infusion-related reactions characterized by one or more of the following symptoms can occur with doxorubicin hydrochloride liposome injection: flushing, shortness of breath, facial swelling, headache, chills, chest pain, back pain, tightness in the chest and throat, fever, tachycardia, pruritus, rash, cyanosis, syncope, bronchospasm, asthma, apnea, and hypotension. The majority of infusion-related events occurred during the first infusion. Of 239 patients with ovarian cancer treated with doxorubicin hydrochloride liposome injection in Trial 4, 7% of patients experienced acute infusion-related reactions resulting in dose interruption. All occurred during cycle 1 and none during subsequent cycles. Across multiple studies of doxorubicin hydrochloride liposome injection monotherapy including this and other studies enrolling 760 patients with various solid tumors, 11% of patients had infusion-related reactions.

Ensure that medications to treat infusion-related reactions and cardiopulmonary resuscitative equipment are available for immediate use prior to initiation of doxorubicin hydrochloride liposome injection. Initiate doxorubicin hydrochloride liposome injection infusions at a rate of 1 mg/min and increase rate as tolerated [see Dosage and Administration (2.6)]. In the event of an infusion-related reaction, temporarily stop the drug until resolution then resume at a reduced infusion rate. Discontinue doxorubicin hydrochloride liposome injection infusion for serious or life-threatening infusion-related reactions.

5.3 Hand-Foot Syndrome (HFS)

In Trial 4, the incidence of HFS was 51% of patients in the doxorubicin hydrochloride liposome injection arm and 0.9% of patients in the topotecan arm, including 24% Grade 3 or 4 cases of HFS in doxorubicin hydrochloride liposome injection-treated patients and no Grade 3 or 4 cases in topotecan-treated patients. HFS or other skin toxicity required discontinuation of doxorubicin hydrochloride liposome injection in 4.2% of patients.

HFS was generally observed after 2 or 3 cycles of treatment but may occur earlier. Delay doxorubicin hydrochloride liposome injection for the first episode of Grade 2 or greater HFS [see Dosage and Administration (2.5)]. Discontinue doxorubicin hydrochloride liposome injection if HFS is severe and debilitating.

5.4 Secondary Oral Neoplasms

Secondary oral cancers, primarily squamous cell carcinoma, have been reported from post-marketing experience in patients with long-term (more than one year) exposure to doxorubicin hydrochloride liposome injection. These malignancies were diagnosed both during treatment with doxorubicin hydrochloride liposome injection and up to 6 years after the last dose. Examine patients at regular intervals for the presence of oral ulceration or with any oral discomfort that may be indicative of secondary oral cancer.

The altered pharmacokinetics and preferential tissue distribution of liposomal doxorubicin that contributes to enhanced skin toxicity and mucositis compared to free doxorubicin may play a role in the development of oral secondary malignancies with long-term use.

5.5 Embryofetal Toxicity

Based on animal data, doxorubicin hydrochloride liposome injection can cause fetal harm when administered to a pregnant woman. At doses approximately 0.12 times the recommended clinical dose,

doxorubicin hydrochloride liposome injection was embryotoxic and abortifacient in rabbits. Advise pregnant women of the potential risk to a fetus. Advise females and males of reproductive potential to use effective contraception during and for 6 months after treatment with doxorubicin hydrochloride liposome injection [see Use in Specific Populations (8.1) and (8.3)].

6 ADVERSE REACTIONS

The following adverse reactions are discussed in more detail in other sections of the labeling.

- Cardiomyopathy [see Warnings and Precautions (5.1)]
- Infusion-Related Reactions [see Warnings and Precautions (5.2)]
- Hand-Foot Syndrome [see Warnings and Precautions (5.3)]
- Secondary Oral Neoplasms [see Warnings and Precautions (5.4)]

The most common adverse reactions (>20%) observed with doxorubicin hydrochloride liposome injection are asthenia, fatigue, fever, nausea, stomatitis, vomiting, diarrhea, constipation, anorexia, hand-foot syndrome, rash and neutropenia, thrombocytopenia and anemia.

6.1 Adverse Reactions in Clinical Trials

Because clinical trials are conducted under widely varying conditions, the adverse reaction rates observed cannot be directly compared to rates on other clinical trials and may not reflect the rates observed in clinical practice.

The safety data reflect exposure to doxorubicin hydrochloride liposome injection in 1310 patients including: 239 patients with ovarian cancer, 753 patients with AIDS-related Kaposi's sarcoma, and 318 patients with multiple myeloma.

The following tables present adverse reactions from clinical trials of single-agent doxorubicin hydrochloride liposome injection in ovarian cancer and AIDS-Related Kaposi's sarcoma.

Patients With Ovarian Cancer

The safety data described below are from Trial 4, which included 239 patients with ovarian cancer treated with doxorubicin hydrochloride liposome injection 50 mg/m² once every 4 weeks for a minimum of four courses in a randomized, multicenter, open-label study. In this trial, patients received doxorubicin hydrochloride liposome injection for a median number of 3.2 months (range 1 day to 25.8 months). The median age of the patients is 60 years (range 27 to 87), with 91% Caucasian, 6% Black, and 3% Hispanic or Other. Table 3 presents the hematologic adverse reactions from Trial 4.

Table 3: Hematologic Adverse Reactions in Trial 4

	Doxorubicin Hydrochloride Liposome Injection Patients (n=239)	Topotecan Patients (n=235)
Neutropenia 500 -<1000/mm ³	8%	14%
<500/mm ³	4.2%	62%
Anemia 6.5 -<8 g/dL	5%	25%
< 6.5 g/dL	0.4%	4.3%
Thrombocytopenia 10,000 -<50,000/mm ³	1.3%	17%
<10,000/mm ³	0%	17%

Table 4 presents the non-hematologic adverse reactions from Trial 4.

Table 4: Non-Hematologic Adverse Reactions in Trial 4

Non-Hematologic Adverse Reaction 10% or Greater	Doxorubicin Hydrochloride Liposome Injection (%) treated (n=239)		Topotecan (%) treated (n=235)	
	All grades	Grades 3–4	All grades	Grades 3–4
Body as a Whole				
Asthenia	40	7	52	8
Fever	21	0.8	31	6
Mucous Membrane Disorder	14	3.8	3.4	0
Back Pain	12	1.7	10	0.9
Infection	12	2.1	6	0.9
Headache	11	0.8	15	0
Digestive				
Nausea	46	5	63	8
Stomatitis	41	8	15	0.4
Vomiting	33	8	44	10
Diarrhea	21	2.5	35	4.2
Anorexia	20	2.5	22	1.3
Dyspepsia	12	0.8	14	0
Nervous				
Dizziness	4.2	0	10	0
Respiratory				
Pharyngitis	16	0	18	0.4
Dyspnea	15	4.1	23	4.3
Cough increased	10	0	12	0
Skin and Appendages				
Hand-foot syndrome	51	24	0.9	0
Rash	29	4.2	12	0.4
Alopecia	19	N/A	52	N/A

The following additional adverse reactions were observed in patients with ovarian cancer with doses administered every four weeks (Trial 4).

Incidence 1% to 10%

Cardiovascular: vasodilation, tachycardia, deep vein thrombosis, hypotension, cardiac arrest.

Digestive: oral moniliasis, mouth ulceration, esophagitis, dysphagia, rectal bleeding, ileus.

Hematologic and Lymphatic: ecchymosis.

Metabolic and Nutritional: dehydration, weight loss, hyperbilirubinemia, hypokalemia, hypercalcemia, hyponatremia.

Nervous: somnolence, dizziness, depression.

Respiratory: rhinitis, pneumonia, sinusitis, epistaxis.

Skin and Appendages: pruritus, skin discoloration, vesiculobullous rash, maculopapular rash, exfoliative dermatitis, herpes zoster, dry skin, herpes simplex, fungal dermatitis, furunculosis, acne.

Special Senses: conjunctivitis, taste perversion, dry eyes.

Urinary: urinary tract infection, hematuria, vaginal moniliasis.

Patients With AIDS-Related Kaposi's Sarcoma The safety data described is based on the experience reported in 753 patients with AIDS-related Kaposi's sarcoma (KS) enrolled in four open-label, uncontrolled trials of doxorubicin hydrochloride liposome injection administered at doses ranging from 10 to 40 mg/m² every 2 to 3 weeks. Demographics of the population were: median age 38.7 years (range 24 to 70); 99% male; 88% Caucasian, 6% Hispanic, 4% Black, and 2% Asian/other/unknown. The majority of patients were treated with 20 mg/m² of doxorubicin hydrochloride liposome injection every 2 to 3 weeks with a median exposure of 4.2 months (range 1 day to 26.6 months). The median cumulative dose was 120 mg/m² (range 3.3 to 798.6 mg/m²); 3% received cumulative doses of greater than 450 mg/m².

Disease characteristics were: 61% poor risk for KS tumor burden, 91% poor risk for immune system, and 47% poor risk for systemic illness; 36% were poor risk for all three categories; median CD4 count 21 cells/mm³ (51% less than 50 cells/mm³); mean absolute neutrophil count at study entry approximately 3,000 cells/mm³.

Of the 693 patients with concomitant medication information, 59% were on one or more antiretroviral medications [35% zidovudine (AZT), 21% didanosine (ddI), 16% zalcitabine (ddC), and 10% stavudine (D4T)]; 85% received PCP prophylaxis (54% sulfamethoxazole/trimethoprim); 85% received antifungal medications (76% fluconazole); 72% received antivirals (56% acyclovir, 29% ganciclovir, and 16% foscarnet) and 48% patients received colony-stimulating factors (sargramostim/filgrastim) during their course of treatment.

Adverse reactions led to discontinuation of treatment in 5% of patients with AIDS-related Kaposi's sarcoma and included myelosuppression, cardiac adverse reactions, infusion-related reactions, toxoplasmosis, HFS, pneumonia, cough/dyspnea, fatigue, optic neuritis, progression of a non-KS tumor, allergy to penicillin, and unspecified reasons. Tables 5 and 6 summarize adverse reactions reported in patients treated with doxorubicin hydrochloride liposome injection for AIDS-related Kaposi's sarcoma in a pooled analysis of the four trials.

Table 5: Hematologic Adverse Reactions Reported in Patients With AIDS-Related Kaposi's Sarcoma

Patients With Refractory or Intolerant AIDS-Related Kaposi's Sarcoma (n=74*)	Total Patients With AIDS-Related Kaposi's Sarcoma (n=720**)	
Neutropenia		
< 1000/mm ³	46%	49%
< 500/mm ³	11%	13%
Anemia		
< 10 g/dL	58%	55%
< 8 g/dL	16%	18%
Thrombocytopenia		
< 150,000/mm ³	61%	61%
< 25,000/mm ³	1.4%	4.2%

*This includes a subset of subjects who were retrospectively identified as having disease progression on prior systemic combination chemotherapy (at least 2 cycles of a regimen containing at least 2 of 3 treatments: bleomycin, vincristine or vinblastine, or doxorubicin) or as being intolerant to such therapy.

**This includes only subjects with AIDS-KS who had available data from the 4 pooled trials.

Table 6: Non-Hematologic Adverse Reactions Reported in ≥ 5% of Patients With AIDS-Related Kaposi's Sarcoma

Adverse Reactions	Patients With Refractory or Intolerant AIDS-Related Kaposi's Sarcoma (n=77*)	Total Patients With AIDS-Related Kaposi's Sarcoma (n=705**)
Nausea	18%	17%
Asthenia	7%	10%
Fever	8%	9%
Alopecia	9%	9%
Alkaline Phosphatase Increase	1.3%	8%
Vomiting	8%	8%
Diarrhea	5%	8%
Stomatitis	5%	7%
Oral Moniliasis	1.3%	6%

*This includes a subset of subjects who were retrospectively identified as having disease progression on prior systemic combination chemotherapy (at least 2 cycles of a regimen containing at least 2 of 3 treatments: bleomycin, vincristine or vinblastine, or doxorubicin) or as being intolerant to such therapy.

**This includes only subjects with AIDS-KS who had available adverse event data from the 4 pooled trials.

The following additional adverse reactions were observed in 705 patients with AIDS-related Kaposi's sarcoma.

Incidence 1% to 5%

Body as a Whole: headache, back pain, infection, allergic reaction, chills.

Cardiovascular: chest pain, hypotension, tachycardia.

Cutaneous: herpes simplex, rash, itching.

Digestive: mouth ulceration, anorexia, dysphagia.

Metabolic and Nutritional: SGPT increase, weight loss, hyperbilirubinemia.

Other: dyspnea, pneumonia, dizziness, somnolence.

Incidence Less Than 1%

Body As A Whole: sepsis, moniliasis, cryptococcosis.

Cardiovascular: thrombophlebitis, cardiomyopathy, palpitation, bundle branch block, congestive heart failure, heart arrest, thrombosis, ventricular arrhythmia.

Digestive: hepatitis.

Metabolic and Nutritional Disorders: dehydration. *Respiratory:* cough increase, pharyngitis.

Skin and Appendages: maculopapular rash, herpes zoster.

Special Senses: taste perversion, conjunctivitis.

Patients With Multiple Myeloma

The safety data described are from 318 patients treated with doxorubicin hydrochloride liposome injection (30 mg/m²) administered on day 4 following bortezomib (1.3 mg/m² i.v. bolus on days 1, 4, 8 and 11) every 3 weeks, in a randomized, open-label, multicenter study (Trial 6). In this trial, patients in the doxorubicin hydrochloride liposome injection + bortezomib combination group were treated for a median number of 4.5 months (range 21 days to 13.5 months). The population was 28 to 85 years of age

(median age 61), 58% male, 90% Caucasian, 6% Black, and 4% Asian and Other. Table 7 lists adverse reactions reported in 10% or more of patients treated with doxorubicin hydrochloride liposome injection in combination with bortezomib for multiple myeloma.

Table 7: Frequency of Treatment-Emergent Adverse Reactions Reported in ≥10% Patients Treated for Multiple Myeloma With Doxorubicin Hydrochloride Liposome Injection in Combination With Bortezomib

Adverse Reaction	Doxorubicin Hydrochloride Liposome Injection + bortezomib (n=318)		Bortezomib (n=318)	
	Any (%)	Grade 3-4	Any (%)	Grade 3-4
Blood and lymphatic system disorders				
Neutropenia	36	32	22	16
Thrombocytopenia	33	24	28	17
Anemia	25	9	21	9
General disorders and administration site conditions				
Fatigue	36	7	28	3
Pyrexia	31	1	22	1
Asthenia	22	6	18	4
Gastrointestinal disorders				
Nausea	48	3	40	1
Diarrhea	46	7	39	5
Vomiting	32	4	22	1
Constipation	31	1	31	1
Mucositis/Stomatitis	20	2	5	<1
Abdominal pain	11	1	8	1
Infections and infestations				
Herpes zoster	11	2	9	2
Herpes simplex	10	0	6	1
Investigations				
Weight decreased	12	0	4	0
Metabolism and Nutritional disorders				
Anorexia	19	2	14	<1
Nervous system disorders				
Peripheral Neuropathy ¹	42	7	45	11
Neuralgia	17	3	20	4
Paresthesia/dysesthesia	13	<1	10	0
Respiratory, thoracic and mediastinal disorders				
Cough	18	0	12	0
Skin and subcutaneous tissue disorders				
Rash ²	22	1	18	1
Hand-foot syndrome	19	6	<1	0

¹ Peripheral neuropathy includes the following adverse reactions: peripheral sensory neuropathy, neuropathy peripheral, polyneuropathy, peripheral motor neuropathy, and neuropathy NOS.

² Rash includes the following adverse reactions: rash, rash erythematous, rash macular, rash maculopapular, rash pruritic, exfoliative rash, and rash generalized.

6.2 Postmarketing Experience

The following additional adverse reactions have been identified during post approval use of doxorubicin hydrochloride liposome injection. Because these reactions are reported voluntarily from a population of uncertain size, it is not always possible to reliably estimate their frequency or establish a causal relationship to drug exposure.

Musculoskeletal and Connective Tissue Disorders: muscle spasms

Respiratory, Thoracic and Mediastinal Disorders: pulmonary embolism (in some cases fatal)

Hematologic disorders: Secondary acute myelogenous leukemia
Skin and subcutaneous tissue disorders: erythema multiforme, Stevens-Johnson syndrome, toxic epidermal necrolysis

Secondary oral neoplasms: [see Warnings and Precautions (5.4)].

7 DRUG INTERACTIONS

No formal drug interaction studies have been conducted with doxorubicin hydrochloride liposome injection.

8 USE IN SPECIFIC POPULATIONS

8.1 Pregnancy

Risk Summary

Based on findings in animals, doxorubicin hydrochloride liposome injection can cause fetal harm when administered to a pregnant woman. In animal reproduction studies, doxorubicin hydrochloride liposome injection was embryotoxic in rats and abortifacient in rabbits following intravenous administration during organogenesis at doses approximately 0.12 times the recommended clinical dose [see Data]. There are no available human data informing the drug-associated risk. Advise pregnant women of the potential risk to a fetus.

The background risk of major birth defects and miscarriage for the indicated populations are unknown. However, the background risk in the U.S. general population of major birth defects is 2 to 4% and of miscarriage is 15 to 20% of clinically recognized pregnancies.

Data

Animal Data Doxorubicin hydrochloride liposome injection was embryotoxic at doses of 1 mg/kg/day in rats and was embryotoxic and abortifacient at 0.5 mg/kg/day in rabbits (both doses are about 0.12 times the recommended dose of 50 mg/m² human dose on a mg/m² basis). Embryotoxicity was characterized by increased embryo-fetal deaths and reduced live litter sizes.

8.2 Lactation

Risk Summary

It is not known whether doxorubicin hydrochloride liposome injection is present in human milk. Because many drugs, including anthracyclines, are excreted in human milk and because of the potential for serious adverse reactions in nursing infants from doxorubicin hydrochloride liposome injection, discontinue breastfeeding during treatment with doxorubicin hydrochloride liposome injection.

8.3 Females and Males of Reproductive Potential

Contraception

Females

Doxorubicin hydrochloride liposome injection can cause fetal harm when administered to a pregnant woman [see Use in Specific Populations (8.1)]. Advise females of reproductive potential to use effective contraception during and for 6 months after treatment with doxorubicin hydrochloride liposome injection.

Males

Doxorubicin hydrochloride liposome injection may damage spermatozoa and testicular tissue, resulting in possible genetic fetal abnormalities. Males with female sexual partners of reproductive potential should use effective contraception during and for 6 months after treatment with doxorubicin hydrochloride liposome injection [see Non-clinical Toxicology (13.1)].

Infertility Females In females of reproductive potential, doxorubicin hydrochloride liposome injection may cause infertility and result in amenorrhea. Premature menopause can occur with doxorubicin HCl. Recovery of menses and ovulation is related to age at treatment.

Males

Doxorubicin hydrochloride liposome injection may result in oligospermia, azospermia, and permanent loss of fertility. Sperm counts have been reported to return to normal levels in some men. This may occur several years after the end of therapy [see Nonclinical Toxicology (13.1)].

8.4 Pediatric Use

The safety and effectiveness of doxorubicin hydrochloride liposome injection in pediatric patients have not been established.

8.5 Geriatric Use

Clinical studies of doxorubicin hydrochloride liposome injection conducted in patients with either epithelial ovarian cancer (Trial 4) or with AIDS-related Kaposi's sarcoma (Trial 5) did not contain sufficient numbers of patients aged 65 and over to determine whether they respond differently from younger subjects.

In Trial 6, of 318 patients treated with doxorubicin hydrochloride liposome injection in combination with bortezomib for multiple myeloma, 37% were 65 years of age or older and 8% were 75 years of age or older. No overall differences in safety or efficacy were observed between these patients and younger patients.

8.6 Hepatic Impairment

The pharmacokinetics of doxorubicin hydrochloride liposome injection has not been adequately evaluated in patients with hepatic impairment. Doxorubicin is eliminated in large part by the liver. Reduce doxorubicin hydrochloride liposome injection for serum bilirubin of 1.2 mg/dL or higher.

10 OVERDOSAGE

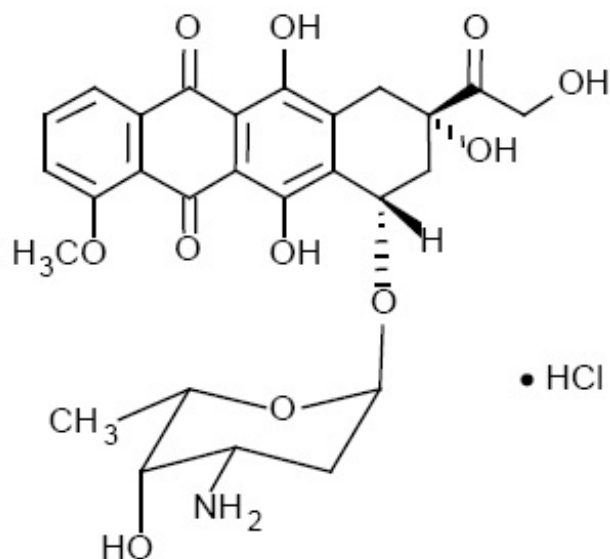
Acute overdosage with doxorubicin HCl causes increased risk of severe mucositis, leukopenia, and thrombocytopenia.

11 DESCRIPTION

Doxorubicin hydrochloride liposome injection is doxorubicin hydrochloride (HCl), an anthracycline topoisomerase II inhibitor, that is encapsulated in PEGYLATED liposomes for intravenous use.

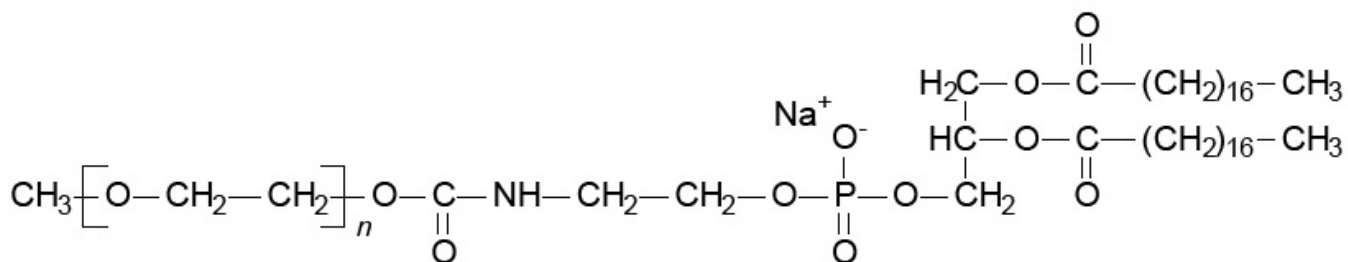
The chemical name of doxorubicin HCl is (8S,10S)-10-[(3-amino-2,3,6-trideoxy- α -L-lyxohexopyranosyl)oxy]-8-glycolyl-7,8,9,10-tetrahydro-6,8,11-trihydroxy-1-methoxy-5,12-

naphthacenedione hydrochloride. The molecular formula is $C_{27}H_{29}NO_{11} \cdot HCl$; its molecular weight is 579.99. The molecular structure is:



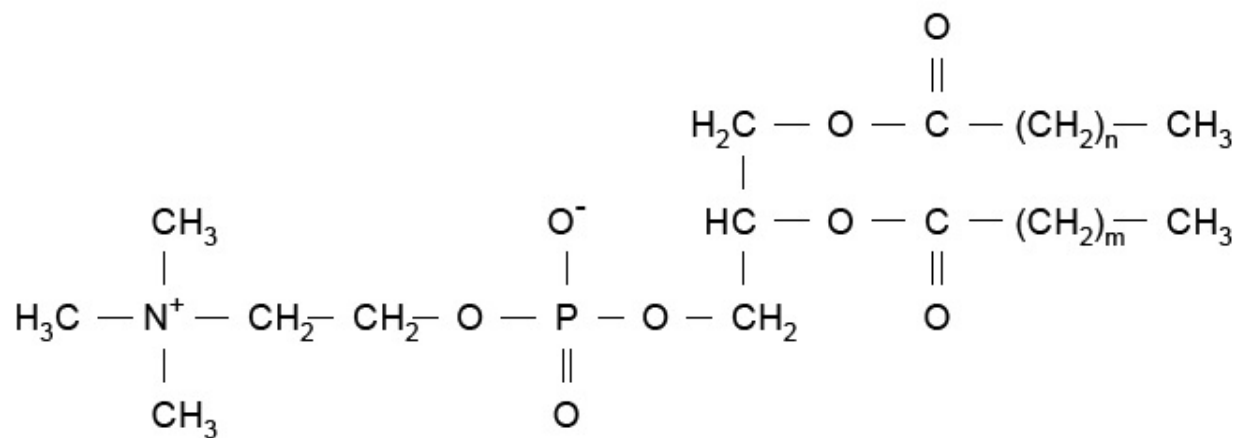
Doxorubicin hydrochloride liposome injection is a sterile, translucent, red liposomal dispersion in 10-mL or 30-mL glass, single-dose vials. Each vial contains 20 mg or 50 mg doxorubicin HCl at a concentration of 2 mg/mL and a pH of 6.5. The PEGYLATED liposome carriers are composed of cholesterol, 3.19 mg/mL; fully hydrogenated soy phosphatidylcholine (HSPC), 9.58 mg/mL; and N-(carbonyl-methoxypolyethylene glycol 2000)-1,2-distearoyl-sn-glycero-3-phosphoethanolamine sodium salt (MPEG-DSPE), 3.19 mg/mL. Each mL also contains ammonium sulfate, approximately 0.6 mg; histidine as a buffer; hydrochloric acid and/or sodium hydroxide for pH control; and sucrose to maintain isotonicity. Greater than 90% of the drug is encapsulated in the PEGYLATED liposomes.

MPEG-DSPE has the following structural formula:



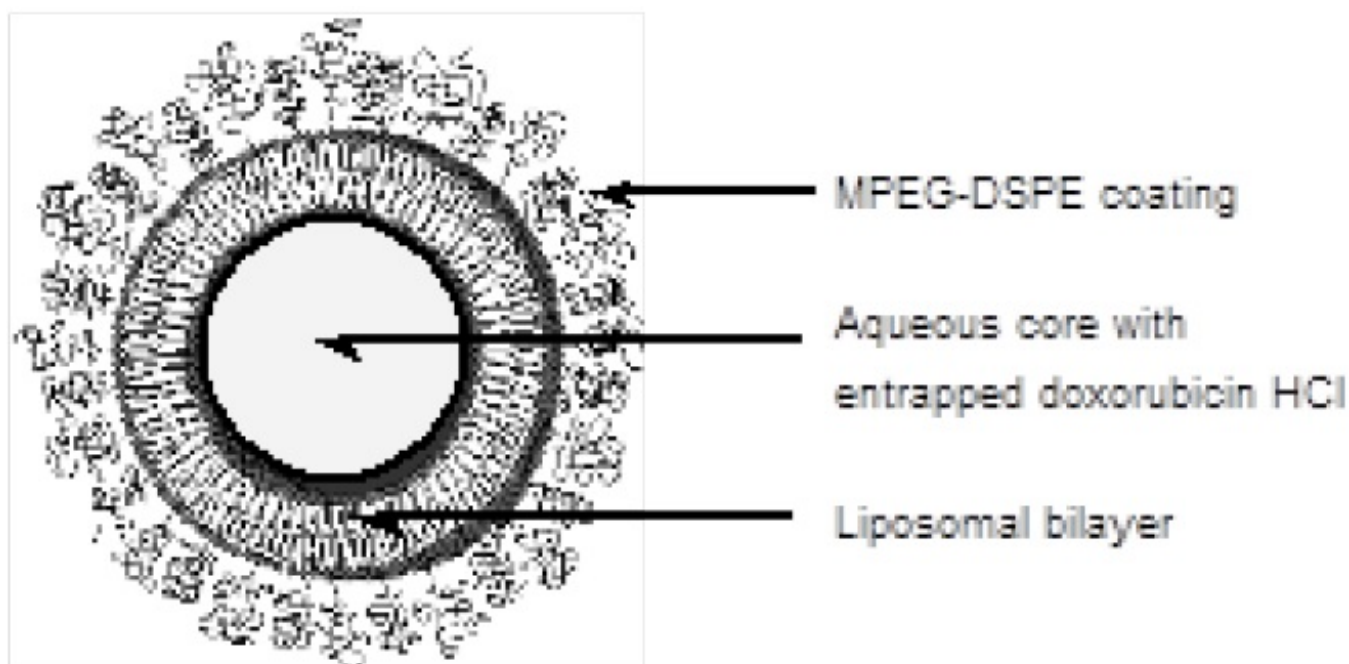
$n \approx 45$

HSPC has the following structural formula:



m,n=14 or 16

Representation of a PEGYLATED liposome:



12 CLINICAL PHARMACOLOGY

12.1 Mechanism of Action

The active ingredient of doxorubicin hydrochloride liposome injection is doxorubicin HCl. The mechanism of action of doxorubicin HCl is thought to be related to its ability to bind DNA and inhibit nucleic acid synthesis. Cell structure studies have demonstrated rapid cell penetration and perinuclear chromatin binding, rapid inhibition of mitotic activity and nucleic acid synthesis, and induction of mutagenesis and chromosomal aberrations.

12.3 Pharmacokinetics

The pharmacokinetic parameters for total doxorubicin following a single dose of doxorubicin hydrochloride liposome injection infused over 30 minutes are presented in Table 8.

Table 8: Pharmacokinetic Parameters of Total Doxorubicin from Doxorubicin Hydrochloride Liposome Injection in Patients With AIDS-Related Kaposi's Sarcoma

Parameter (units)	Dose	
	10 mg/m ²	20 mg/m ²
Peak Plasma Concentration (mcg/mL)	4.12 ± 0.215	8.34 ± 0.49
Plasma Clearance (L/h/m ²)	0.056 ± 0.010	0.041 ± 0.004
Steady State Volume of Distribution (L/m ²)	2.83 ± 0.145	2.72 ± 0.120
AUC (mcg/mL•h)	277 ± 32.9	590 ± 58.7
First Phase (λ_1) Half-Life (h)	4.7 ± 1.1	5.2 ± 1.4
Second Phase (λ_2) Half-Life (h)	52.3 ± 5.6	55 ± 4.8

N=23

Mean ± Standard Error

Doxorubicin hydrochloride liposome injection displayed linear pharmacokinetics over the range of 10 to 20 mg/m². Relative to doxorubicin hydrochloride liposome injection doses at or below 20 mg/m², the pharmacokinetics of total doxorubicin following a 50 mg/m² doxorubicin hydrochloride liposome injection dose are nonlinear. At this dose, the elimination half-life of doxorubicin hydrochloride liposome injection is longer and the clearance lower compared to a 20 mg/m² dose.

Distribution:

Direct measurement of liposomal doxorubicin shows that at least 90% of the drug (the assay used cannot quantify less than 5 to 10% free doxorubicin) remains liposome-encapsulated during circulation.

In contrast to doxorubicin, which displays a large volume of distribution (range 700 to 1100 L/m²), the small steady state volume of distribution of liposomal doxorubicin suggests that doxorubicin hydrochloride liposome injection is largely confined to vascular fluid. Doxorubicin becomes available after the liposomes are extravasated. Plasma protein binding of doxorubicin hydrochloride liposome injection has not been determined; the plasma protein binding of doxorubicin is approximately 70%.

Metabolism:

Doxorubicinol, the major metabolite of doxorubicin, was detected at concentrations of 0.8 to 26.2 ng/mL in the plasma of patients who received 10 or 20 mg/m² doxorubicin hydrochloride liposome injection.

Elimination:

The plasma clearance of total doxorubicin from doxorubicin hydrochloride liposome injection was 0.041 L/h/m² at a dose of 20 mg/m². Following administration of doxorubicin HCl, the plasma clearance of doxorubicin is 24 to 35 L/h/m².

13 NONCLINICAL TOXICOLOGY

13.1 Carcinogenesis, Mutagenesis, Impairment of Fertility

Mutagenicity or carcinogenicity studies have not been conducted with doxorubicin hydrochloride liposome injection, however doxorubicin was shown to be mutagenic in the *in vitro* Ames assay, and clastogenic in multiple *in vitro* assays (CHO cell, V79 hamster cell, human lymphoblast, and SCE assays) and the *in vivo* mouse micronucleus assay. The possible adverse effects on fertility in animals have not been adequately evaluated. Doxorubicin hydrochloride liposome injection resulted in mild to moderate ovarian and testicular atrophy in mice after administration of a single dose of 36 mg/kg (about 2 times the 50 mg/m² human dose on a mg/m² basis). Decreased testicular weights and hypospermia were observed in rats after repeat doses ≥ 0.25 mg/kg/day (about 0.03 times the 50 mg/m² human dose on a mg/m² basis), and diffuse degeneration of the seminiferous tubules and a marked decrease in spermatogenesis were observed in dogs after repeat doses of 1 mg/kg/day (about 0.4 times the 50

mg/m² human dose on a mg/m² basis).

14 CLINICAL STUDIES

14.1 Ovarian Cancer

Doxorubicin hydrochloride liposome injection was studied in three open-label, single-arm, clinical studies of 176 patients with metastatic ovarian cancer (Trials 1, 2, and 3). One hundred forty-five of these patients were refractory to both paclitaxel-and platinum-based chemotherapy regimens, defined as disease progression while on treatment or relapse within 6 months of completing treatment. Patients received doxorubicin hydrochloride liposome injection at 50 mg/m² every 3 or 4 weeks for 3 to 6+ cycles in the absence of dose-limiting toxicity or disease progression.

The median age at diagnosis ranged from 52 to 64 years in the 3 studies, and the range was 22 to 85. Most patients had International Federation of Obstetricians and Gynecologists (FIGO) stage III or IV disease (ranging from 83% to 93%). Approximately one third of the patients had three or more prior lines of therapy (ranging from 22% to 33%).

The primary outcome measure was confirmed response rate based on Southwestern Oncology Group (SWOG) criteria for patients refractory to both paclitaxel-and a platinum-containing regimen. Secondary efficacy parameters were time to response, duration of response, and time to progression.

The response rates for the individual single arm trials are given in Table 9 below.

Table 9: Response Rates in Patients With Refractory Ovarian Cancer From Single Arm Ovarian Cancer Trials

	Trial 1 (U.S.) N=27	Trial 2 (U.S.) N=82	Trial 3 (non-U.S.) N=36
Response Rate	22.2%	17.1%	0%
95% Confidence Interval	8.6% -42.3%	9.7% -27%	0% -9.7%

In a pooled analysis of Trials 1 to 3, the response rate for all patients refractory to paclitaxel and platinum agents was 13.8% (95% CI 8.1% to 19.3%). The median time to progression was 15.9 weeks, the median time to response was 17.6 weeks, and the duration of response was 39.4 weeks.

In Trial 4, a randomized, multicenter, open-label, trial in 474 patients with epithelial ovarian cancer after platinum-based chemotherapy, patients were randomized to receive either doxorubicin hydrochloride liposome injection 50 mg/m² every 4 weeks (n=239) or topotecan 1.5 mg/m² daily for 5 consecutive days every 3 weeks (n=235). Patients were stratified according to platinum sensitivity (response to initial platinum-based therapy and a progression-free interval of greater than 6 months off treatment) and the presence of bulky disease (tumor mass greater than 5 cm in size). The primary outcome measure was time to progression (TTP). Other endpoints included overall survival and objective response rate.

Of the 474 patients, the median age at diagnosis was 60 years (range 25 to 87), 90% were FIGO stage III and IV; 46% were platinum sensitive; and 45% had bulky disease. There was no statistically significant difference in TTP between the two arms. Results are provided in Table 10.

Table 10: Results of Efficacy Analyses¹

Protocol Defined ITT Population

**Doxorubicin
Hydrochloride
Liposome Injection
(n=239)**

Topotecan(n=235)

TTP (Protocol Specified Primary Endpoint)		0.62	4.2
Median (Months) ²	4.1	0.96	
p-value ³ Hazard Ratio ⁴			
95% CI for Hazard Ratio		(0.76, 1.20)	
Overall Survival			
Median (Months) ² p-value ⁵ Hazard Ratio ⁴	14.4	0.05 0.82	13.7
95% CI for Hazard Ratio		(0.68, 1)	
Response Rate			
Overall Response n(%)	47 (19.7)		40 (17)
Complete Response n(%)	9 (3.8)		11 (4.7)
Partial Response n(%)	38 (15.9)		29 (12.3)
Median Duration of Response (Months) ²	6.9		5.9

1 1 Analysis based on investigators' strata for protocol defined ITT population.

2 Kaplan-Meier estimates.

3 p-value is based on the stratified log-rank test.

4Hazard ratio is based on Cox proportional-hazard model with the treatment as single independent variable. A hazard ratio less than 1 indicates an advantage for doxorubicin hydrochloride liposome injection.

5 p-value not adjusted for multiple comparisons.

14.2 AIDS-Related Kaposi's Sarcoma

Doxorubicin hydrochloride liposome injection was studied in an open-label, single-arm, multicenter study at a dose of 20 mg/m² every 3 weeks, until disease progression or unacceptable toxicity (Trial 5). Data is described for a cohort of 77 patients retrospectively identified as having disease progression on prior systemic combination chemotherapy (at least two cycles of a regimen containing at least two of three treatments: bleomycin, vincristine or vinblastine, or doxorubicin) or as being intolerant to such therapy. Forty-nine of the 77 (64%) patients had received prior doxorubicin HCl.

The median time on study was 5.1 months (range 1 day to 15 months). The median cumulative dose of doxorubicin hydrochloride liposome injection was 154 mg/m² (range 20 to 620 mg/m²). Among the 77 patients, mean age was 38 years (range 24 to 54); 87% were Caucasian, 5% Hispanic, 4% Black, and 4% Asian/Other/Unknown; median CD4 count was 10 cells/mm³; ACTG staging criteria were 78% poor risk for tumor burden, 96% poor risk for immune system, and 58% poor risk for systemic illness at baseline; and mean Karnofsky status score was 74%. All patients had cutaneous or subcutaneous lesions, 40% also had oral lesions, 26% pulmonary lesions, and 14% had lesions of the stomach/intestine.

Two analyses of tumor response were used: one based on investigator assessment of changes in lesions based on modified ACTG criteria (partial response defined as no new lesions, sites of disease, or worsening edema; flattening of ≥50% of previously raised lesions or area of indicator lesions decreasing by ≥50%; and response lasting at least 21 days with no prior progression), and one based on changes in up to five prospectively identified representative indicator lesions (partial response defined as flattening of ≥50% of previously raised indicator lesions, or >50% decrease in the area of indicator lesions and lasting at least 21 days with no prior progression). Of the 77 patients, 34 were evaluable for investigator assessment and 42 were evaluable for indicator lesion assessment; analyses of tumor responses are shown in Table 11.

Table 11: Response in Patients with Refractory AIDS-Related Kaposi's Sarcoma

Investigator Assessment	All Evaluable Patients (n=34)	Evaluable Patients Who
		Received Prior Doxorubicin

		(n=20)
Response [†]		
Partial (PR)	27%	30%
Stable	29%	40%
Progression	44%	30%
Duration of PR (Days)		
Median	73	89
Range	42+ to 210+	42+ to 210+
Time to PR (Days)		
Median	43	53
Range	15 to 133	15 to 109
Indicator Lesion Assessment	All Evaluable Patients (n=42)	Evaluable Patients Who Received Prior Doxorubicin (n=23)
Response [†]		
Partial (PR)	48%	52%
Stable	26%	30%
Progression	26%	17%
Duration of PR (Days)		
Median	71	79
Range	22+ to 210+	35 to 210+
Time to PR (Days)		
Median	22	48
Range	15 to 109	15 to 109

¹ Patients with disease that progressed on prior combination chemotherapy or who were intolerant to such therapy.

² There were no complete responses in this population.

Retrospective efficacy analyses were performed in two trials that had subsets of patients who received single-agent doxorubicin hydrochloride liposome injection and who were on stable antiretroviral therapy for at least 60 days prior to enrollment and until a response was demonstrated. In one trial, 7 of 17 (40%) patients had a durable response (median duration not reached but was longer than 11.6 months). In the second trial, 4 of 11 patients (40%) on a stable antiretroviral therapy demonstrated durable responses.

14.3 Multiple Myeloma

The efficacy of doxorubicin hydrochloride liposome injection in combination with bortezomib was evaluated in Trial 6, a randomized, open-label, international, multicenter study in 646 patients who had not previously received bortezomib and whose disease progressed during or after at least one prior therapy. Patients were randomized (1:1) to receive either doxorubicin hydrochloride liposome injection (30 mg/m²) administered IV on day 4 following bortezomib (1.3 mg/m² IV on days 1, 4, 8 and 11) or bortezomib alone every 3 weeks for up to 8 cycles or until disease progression or unacceptable toxicity. Patients who maintained a response were allowed to receive further treatment. The median number of cycles in each treatment arm was 5 (range 1 to 18).

The baseline demographics and clinical characteristics of the patients with multiple myeloma were similar between treatment arms (Table 12).

Table 12: Summary of Baseline Patient and Disease Characteristics

Patient Characteristics	Doxorubicin Hydrochloride Liposome Injection+bortezomib n=324	bortezomib N=322
Median age in years (range)	61 (28, 85)	62 (34, 88)
% Male/female	58 / 42	54 / 46
% Caucasian/Black/other	90 / 6 / 4	94 / 4 / 2
Disease Characteristics		
% with IgG/IgA/Light chain	57 / 27 / 12	62 / 24 / 11
% β 2 -microglobulin group		
≤2.5 mg/L	14	14
>2.5 mg/L and ≤5.5 mg/L	56	55
>5.5 mg/L	30	31
Serum M-protein (g/dL): Median (Range)	2.5 (0 to 10)	2.7 (0 to 10)
Urine M-protein (mg/24 hours): Median (Range)	107 (0 to 24883)	66 (0 to 39657)
Median Months Since Diagnosis	35.2	37.5
% Prior Therapy		
One	34	34
More than one	66	66
Prior Systemic Therapies for Multiple Myeloma		
Corticosteroid (%)	99	>99
Anthracyclines	68	67
Alkylating agent (%)	92	90
Thalidomide/lenalidomide (%)	40	43
Stem cell transplantation (%)	57	54

The primary outcome measure was time to progression (TTP). TTP was defined as the time from randomization to the first occurrence of progressive disease or death due to progressive disease. The combination arm demonstrated significant improvement in TTP. As the prespecified primary objective was achieved at the interim analysis, patients in the bortezomib monotherapy group were then allowed to receive the doxorubicin hydrochloride liposome injection + bortezomib combination. Efficacy results are as shown in Table 13 and Figure 1.

Table 13: Efficacy of Doxorubicin Hydrochloride Liposome Injection in Combination With Bortezomib in the Treatment of Patients With Multiple Myeloma

Endpoint	Doxorubicin Hydrochloride Liposome Injection + bortezomib n=324	Bortezomib n=322
Time to Progression¹		
Progression or death due to progression (n)	99	150
Censored (n)	225	172
Median in days (months)	282 (9.3)	197 (6.5)
95% CI	250;338	170;217
Hazard ratio (95% CI)		0.55(0.43,

Hazard Ratio ² (95% CI)	p-value ³	
		0.71)<0.001
Response (n)⁴	303	310
% Complete Response (CR)	5	3
% Partial Response (PR)	43	40
% CR + PR	48	43
p-value ⁵		0.25
Median Duration of Response (months) (95% CI)	10.2(10.2;12.9)	7(5.9;8.3)

¹ Kaplan Meier estimate.

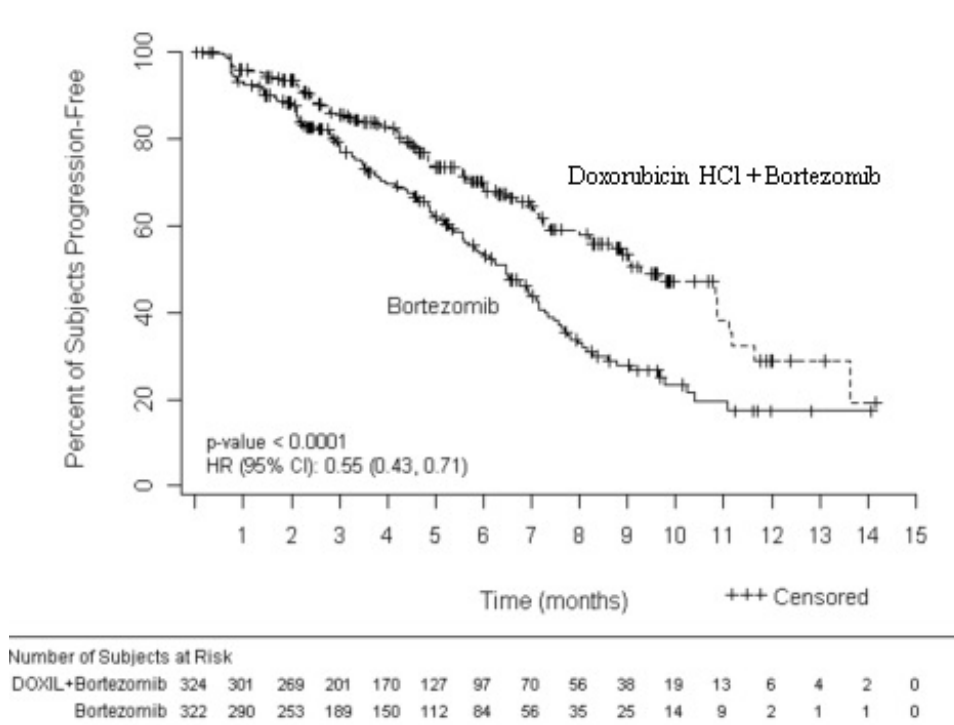
² Hazard ratio based on stratified Cox proportional hazards regression. A hazard ratio < 1 indicates an advantage for doxorubicin hydrochloride liposome injection+bortezomib.

³ Stratified log-rank test.

⁴ RR as per EBMT criteria.

⁵ Cochran-Mantel-Haenszel test adjusted for the stratification factors.

Figure 1-Time to Progression Kaplan-Meier Curve



At the final analysis of survival, 78% of subjects in the doxorubicin hydrochloride liposome injection and bortezomib combination therapy group and 80% of subjects in the bortezomib monotherapy group had died after a median follow up of 8.6 years. The median survival was 33 months in the doxorubicin hydrochloride liposome injection and bortezomib combination therapy group and 31 months in the bortezomib monotherapy group. There was no difference observed in overall survival at the final analysis [HR for doxorubicin hydrochloride liposome injection + bortezomib vs. bortezomib= 0.96 (95% CI 0.80, 1.14)].

Seventy-eight percent of subjects in the doxorubicin hydrochloride liposome injection and bortezomib combination therapy group and 80% of subjects in the bortezomib monotherapy group had received subsequent therapy.

15 REFERENCES

1. "Hazardous Drugs", OSHA, <http://www.osha.gov/SLTC/hazardousdrugs/index.html>

16 HOW SUPPLIED/STORAGE AND HANDLING

Doxorubicin hydrochloride liposome injection is a sterile, translucent, red liposomal dispersion in 10-mL or 30-mL glass, single-dose vials. Each 10-mL vial contains 20 mg doxorubicin HCl at a concentration of 2 mg/mL. Each 30-mL vial contains 50 mg doxorubicin HCl at a concentration of 2 mg/mL. The following individually cartoned vials are available:

Table 14

mg in vial	fill volume	vial size	NDC #s
20 mg	vial 10-mL	10-mL	43598-283-35
50 mg	vial 25-mL	30-mL	43598-541-25

Refrigerate unopened vials of doxorubicin hydrochloride liposome injection at 2°-8°C (36°-46°F). Do not freeze.

Doxorubicin hydrochloride liposome injection is a cytotoxic drug. Follow applicable special handling and disposal procedures.¹

17 PATIENT COUNSELING INFORMATION

Cardiomyopathy Advise patients to contact their healthcare provider if they develop symptoms of heart failure [see Warnings and Precautions (5.1)]. **Infusion-Related Reactions** Advise patients about the symptoms of infusion related reactions and to seek immediate medical attention if they develop any of these symptoms [see Warnings and Precautions (5.2)].

Myelosuppression Advise patients to contact their healthcare provider for a new onset fever or symptoms of infection. **Hand-Foot Syndrome** Advise patients to notify their healthcare provider if they experience tingling or burning, redness, flaking, bothersome swelling, small blisters, or small sores on the palms of their hands or soles of their feet (symptoms of Hand-Foot Syndrome) [see Warnings and Precautions (5.3)]. **Stomatitis** Advise patients to notify their healthcare provider if they develop painful redness, swelling, or sores in the mouth (symptoms of stomatitis).

Embryofetal Toxicity Advise females of reproductive potential of the potential risk to a fetus and to inform their healthcare provider with a known or suspected pregnancy [see Warnings and Precautions (5.5) and Use in Specific Populations (8.1)].

Advise females and males of reproductive potential to use effective contraception during and for 6 months following treatment with doxorubicin hydrochloride liposome injection [see Use in Specific Populations (8.3)].

Lactation Advise females not to breastfeed during treatment with doxorubicin hydrochloride liposome injection [see Use in Specific Populations (8.2)].

Infertility Advise females and males of reproductive potential that doxorubicin hydrochloride liposome injection may cause temporary or permanent infertility [see Use in Specific Populations (8.3)].

Discoloration of Urine and Body Fluids Inform patients that following doxorubicin hydrochloride liposome injection administration, a reddish-orange color to the urine and other body fluids may be observed. This nontoxic reaction is due to the color of the product and will dissipate as the drug is eliminated from the body.

Rx Only

Distributor:


Dr. Reddy's Laboratories Inc.,

Princeton NJ 08540


Made In India

Revised: 0817


PACKAGE LABEL PRINCIPAL DISPLAY PANEL SECTION

NDC 43598-283-35
DOXOrubicin Hydrochloride
Liposome Injection
20 mg/10 mL (2 mg/mL)
Single-Dose Vial. Discard unused portion.
LIPOSOMAL FORMULATION
-DO NOT SUBSTITUTE FOR
DOXORUBICIN HCl
FOR INTRAVENOUS INFUSION ONLY
Rx Only 


Cytotoxic Agent **Must be diluted**
Refrigerate, 2°-8°C (36°-46°F). Do not Freeze.
USUAL DOSAGE:
See package insert for dosage information.
Retain vial in carton until time of use.
Sterile 388019
I 0416 008009
Code No.: TS/DRUGS/164/1995
Distributor: Dr. Reddy's Laboratories Inc.,
Princeton, NJ 08540, Made in India



LOT 28 P

NDC 43598-541-25
DOXOrubicin Hydrochloride
Liposome Injection
50 mg/25 mL (2 mg/mL)
Single-Dose Vial.
Discard unused portion.
LIPOSOMAL FORMULATION
-DO NOT SUBSTITUTE FOR
DOXORUBICIN HCl
FOR INTRAVENOUS INFUSION ONLY
Rx Only 

Cytotoxic Agent **Must be diluted**
Refrigerate, 2°-8°C (36°-46°F).
Do not Freeze.
USUAL DOSAGE:
See package insert for dosage information.
Retain vial in carton until time of use.
Sterile 388020
I 0416 008011
Code No.: TS/DRUGS/164/1995
Distributor: Dr. Reddy's Laboratories Inc.,
Princeton, NJ 08540, Made in India



LOT EXP

Unvarnished Area Consists of: 2D Barcode, Lot Number, Expiry Date and Serial Number



un varnished area
not to be printed
(38 x 38 mm)

USA 2d

0 0000
030002

NDC 43598-283-35

DOXOrubicin Hydrochloride Liposome Injection

20 mg/10 mL (2 mg/mL)

Single-Dose Vial.
Discard unused portion.

**LIPOSOMAL FORMULATION -
DO NOT SUBSTITUTE FOR
DOXORUBICIN HCl**

FOR INTRAVENOUS INFUSION ONLY

Refrigerate, 2°-8°C (36°-46°F).
Do not Freeze.

Rx Only

Dr.Reddy's 

Each mL contains doxorubicin HCl, 2 mg. PEGYLATED liposome carriers are composed of cholesterol, 3.19 mg; fully hydrogenated soy phosphatidylcholine (HSPC), 9.58 mg; and N-(carboxyl-methoxy)polyethylene glycol 2000)-1,2-distearoyl-sn-glycero-3-phosphoethanol-amine sodium salt (MPEG-DSPE), 3.19 mg. Each mL also contains ammonium sulfate, approximately 0.6 mg; sucrose; histidine; and hydrochloric acid and/or sodium hydroxide.

Note: Liposomal formulation.

USUAL DOSAGE: See package insert for dosage information.

Sterile, Cytotoxic Agent

MUST BE DILUTED PRIOR TO ADMINISTRATION

Retain vial in carton until time of use.

Keep out of reach of children.

R 0817

NDC 43598-283-35

DOXOrubicin Hydrochloride Liposome Injection

20 mg/10 mL (2 mg/mL)

Single-Dose Vial.
Discard unused portion.

**LIPOSOMAL FORMULATION -
DO NOT SUBSTITUTE FOR
DOXORUBICIN HCl**

FOR INTRAVENOUS INFUSION ONLY

Refrigerate, 2°-8°C (36°-46°F).
Do not Freeze.

Rx Only

Dr.Reddy's 

Code No.: TS/DRUGS/164/1995

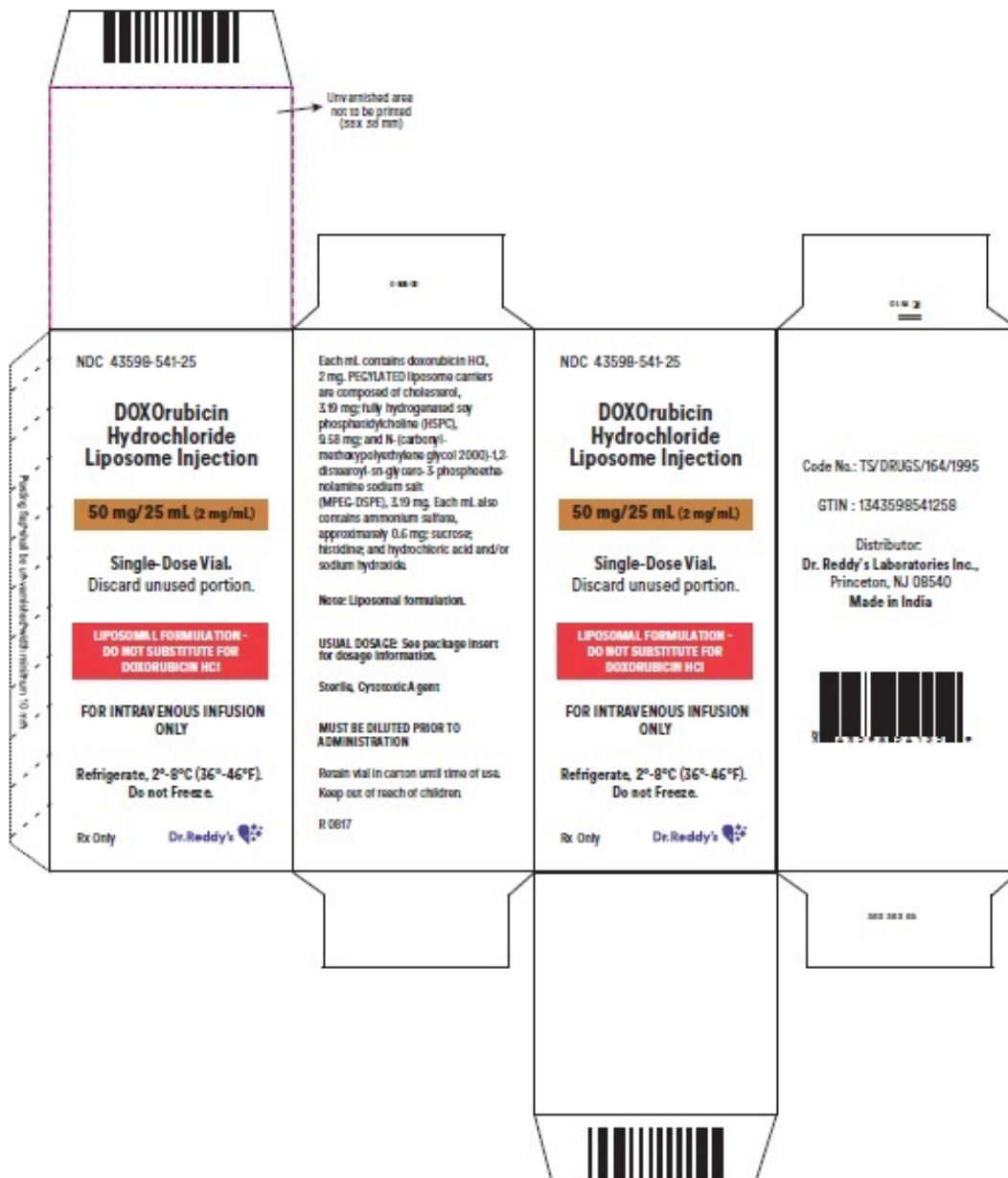
Distributor:
Dr. Reddy's Laboratories Inc.,
Princeton, NJ 08540
Made in India

GTIN: 10343598283354



33 x 55 x 55





DOXORUBICIN HYDROCHLORIDE

doxorubicin hydrochloride injectable, liposomal

Product Information

Product Type	HUMAN PRESCRIPTION DRUG	Item Code (Source)	NDC:43598-283
Route of Administration	INTRAVENOUS		

Active Ingredient/Active Moiety

Ingredient Name	Basis of Strength	Strength
Doxorubicin Hydrochloride (UNII: 82F2G7BL4E) (Doxorubicin - UNII:80168379AG)	Doxorubicin Hydrochloride	2 mg in 1 mL

Inactive Ingredients

Ingredient Name	Strength

Ammonium Sulfate (UNII: SU46BAM238)
Histidine (UNII: 4QD397987E)
Hydrochloric Acid (UNII: QTT17582CB)
Sodium Hydroxide (UNII: 55X04QC32I)
Sucrose (UNII: C151H8M554)
Cholesterol (UNII: 97C5T2UQ7J)
Hydrogenated Soybean Lecithin (UNII: H1109Z9J4N)
N-(Carbonyl-Methoxypolyethylene Glycol 2000)-1,2-Distearoyl-Sn-Glycero-3-Phosphoethanolamine, Sodium Salt (UNII: 3L6NN8ZZKU)

Packaging

#	Item Code	Package Description	Marketing Start Date	Marketing End Date
1	NDC:43598-283-35	1 in 1 PACKAGE	05/22/2017	
1		10 mL in 1 VIAL, SINGLE-DOSE; Type 0: Not a Combination Product		

Marketing Information

Marketing Category	Application Number or Monograph Citation	Marketing Start Date	Marketing End Date
ANDA	ANDA208657	05/22/2017	

DOXORUBICIN HYDROCHLORIDE

doxorubicin hydrochloride injectable, liposomal

Product Information

Product Type	HUMAN PRESCRIPTION DRUG	Item Code (Source)	NDC:43598-541
Route of Administration	INTRAVENOUS		

Active Ingredient/Active Moiety

Ingredient Name	Basis of Strength	Strength
Doxorubicin Hydrochloride (UNII: 82F2G7BL4E) (Doxorubicin - UNII:80168379AG)	Doxorubicin Hydrochloride	2 mg in 1 mL

Inactive Ingredients

Ingredient Name	Strength
Ammonium Sulfate (UNII: SU46BAM238)	
Histidine (UNII: 4QD397987E)	
Hydrochloric Acid (UNII: QTT17582CB)	
Sodium Hydroxide (UNII: 55X04QC32I)	
Sucrose (UNII: C151H8M554)	
Cholesterol (UNII: 97C5T2UQ7J)	
Hydrogenated Soybean Lecithin (UNII: H1109Z9J4N)	
N-(Carbonyl-Methoxypolyethylene Glycol 2000)-1,2-Distearoyl-Sn-Glycero-3-Phosphoethanolamine, Sodium	

Salt (UNII: 3L6NN8ZZKU)

Packaging

#	Item Code	Package Description	Marketing Start Date	Marketing End Date
1	NDC:43598-541-25	1 in 1 CARTON	05/22/2017	
1		25 mL in 1 VIAL, SINGLE-DOSE; Type 0: Not a Combination Product		

Marketing Information

Marketing Category	Application Number or Monograph Citation	Marketing Start Date	Marketing End Date
ANDA	ANDA208657	05/22/2017	

Labeler - Dr. Reddy's Laboratories Inc (802315887)

Establishment

Name	Address	ID/FEI	Business Operations
Natco Pharma Ltd		918588174	analysis(43598-283, 43598-541) , manufacture(43598-283, 43598-541)

Revised: 8/2017

Dr. Reddy's Laboratories Inc