

NASAL ALLERGY RELIEF- cardiospermum halicacabum flowering top, galphimia glauca flowering top, luffa operculata fruit and schoenocaulon officinale seed spray
Similasan Corporation

Disclaimer: This homeopathic product has not been evaluated by the Food and Drug Administration for safety or efficacy. FDA is not aware of scientific evidence to support homeopathy as effective.

Nasal Allergy Relief

Drug Facts

Active Ingredients

Cardiospermum 6X

Purpose

itching, runny nose

Active Ingredient

Galphimia glauca 6X

Purpose

runny nose, watery eyes, sneezing

Active Ingredient

Luffa operculata 6X

Purpose

runny nose, sinus congestion

Active Ingredient

Sabadilla 6X

Purpose

sneezing, itching

Uses*:

According to homeopathic principles, the active ingredients in this product temporarily relieve minor symptoms such as:

- allergies accompanied by runny nose, itching and/or burning of the nose, watery eyes, sneezing and swollen mucous membranes (congestion)
- post nasal drip caused by allergies
- sinus pressure caused by allergies

Warnings:

- According to homeopathic principles, symptoms may temporarily worsen before improving (Initial exacerbation of symptoms).
- Replace cap tightly after every use.
- To avoid contamination, do not touch the tip of the container to any surface besides nose.
- Discard open bottle after 6 months.
- The use of this container by more than one person may spread infection.

If pregnant, trying to get pregnant or breast feeding,

ask a health professional before use.

Keep out of reach of children.

If swallowed, get medical help or contact a Poison Control Center right away.

Ask a doctor before use if you:

- are susceptible to nose bleeds
- are prone to ear, nose or throat sensitivity

Stop use and ask a doctor if:

- symptoms worsen or persist for more than 72 hours

Directions:

For adults and children ages 2 and over:

- Remove tamper-evident plastic seal from bottle
- Lift cap off bottle
- Spray 1-3 times into each nostril
- Use as needed
- Replace cap after use

Other information:

Active ingredients are manufactured according to homeopathic principles.

Inactive Ingredients:

Purified water, Sodium chloride

Questions?

Reach our representatives at **1-800-240-9780** or getinfo@similasanusa.com.
www.SimilasanUSA.com

PRINCIPAL DISPLAY PANEL

Similisan
Nasal Allergy Relief
NASAL MIST
PRESERVATIVE FREE
20 ml / 0.68 fl oz

NATURAL ACTIVE INGREDIENTS

Nasal Allergy Relief

Similasan

Drug Facts

Active Ingredients Purpose

Cardiospermum 6X..... itching, runny nose
Galphimia glauca 6X..... runny nose, watery eyes, sneezing
Luffa operculata 6X..... runny nose, sinus congestion
Sabadilla 6X..... sneezing, itching

Uses*

According to homeopathic principles, the active ingredients in this product temporarily relieve minor symptoms such as:
• allergies accompanied by runny nose, itching and/or burning of the nose, watery eyes, sneezing and swollen mucous membranes (congestion)
• post nasal drip caused by allergies
• sinus pressure caused by allergies

Warnings

• According to homeopathic principles, symptoms may temporarily worsen before improving (initial exacerbation of symptoms).
• Replace cap tightly after every use.
• To avoid contamination, do not touch the tip of the container to any surface besides nose.
• Discard open bottle after 6 months.
• The use of this container by more than one person may spread infection.

If pregnant, trying to get pregnant or breast feeding, ask a health professional before use.

Keep out of reach of children. If swallowed, get medical help or contact a Poison Control Center right away.

Ask a doctor before use if you:

• are susceptible to nose bleeds
• are prone to ear, nose or throat sensitivity

Drug Facts (continued)

Stop use and ask a doctor if:
• symptoms worsen or persist for more than 72 hours

Directions

For adults and children ages 2 and over:
• Remove tamper-evident plastic seal from bottle
• Lift cap off bottle
• Spray 1-3 times into each nostril
• Use as needed
• Replace cap after use



Other information

Active ingredients are manufactured according to homeopathic principles.

Inactive Ingredients

Purified water, Sodium chloride

Questions?

Reach our representatives at 1-800-240-9780 or getinfo@similasanusa.com www.SimilasanUSA.com

For your protection do not use if tamper-evident seal around neck of bottle is missing or broken.



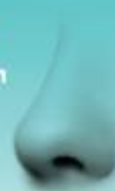
Similasan

Nasal Allergy Relief

NASAL MIST PRESERVATIVE FREE

MULTI-SYMPTOM ALLERGY RELIEF

- Sinus Congestion
• Itching
• Runny Nose
• Sneezing



ES Español

Alivio de la Alergia Nasal

Nebulización Nasal
LIBRE DE PRESERVATIVOS
INGREDIENTES ACTIVOS
NATURALES

ALIVIO DE MÚLTIPLES SÍNTOMAS DE LA ALERGINA

- Congestión en los senos nasales
• Picazón
• Escumamiento nasal
• Estornudos

Instrucciones en español adentro

Similasan, trusted for over 40 years in Switzerland. No Harsh Chemicals

Similasan and Similasan Nasal Allergy Relief are trademarks of TAS Eye Care Management AG, Switzerland, and the Similasan logo is a registered trademark of TAS Eye Care Management AG, Switzerland. Manufactured by Similasan AG, 8915 Jones, Switzerland. Imported and Distributed by: Similasan Corporation, Highlands Ranch, CO 80129 Made in Switzerland

NATURAL ACTIVE INGREDIENTS

www.SimilasanUSA.com

*Claims based on traditional homeopathic practice, not accepted medical evidence. Not FDA evaluated.

Feel Good About Feeling Better™

HOMEOPATHIC Original Swiss Formula 20 ml / 0.68 fl oz



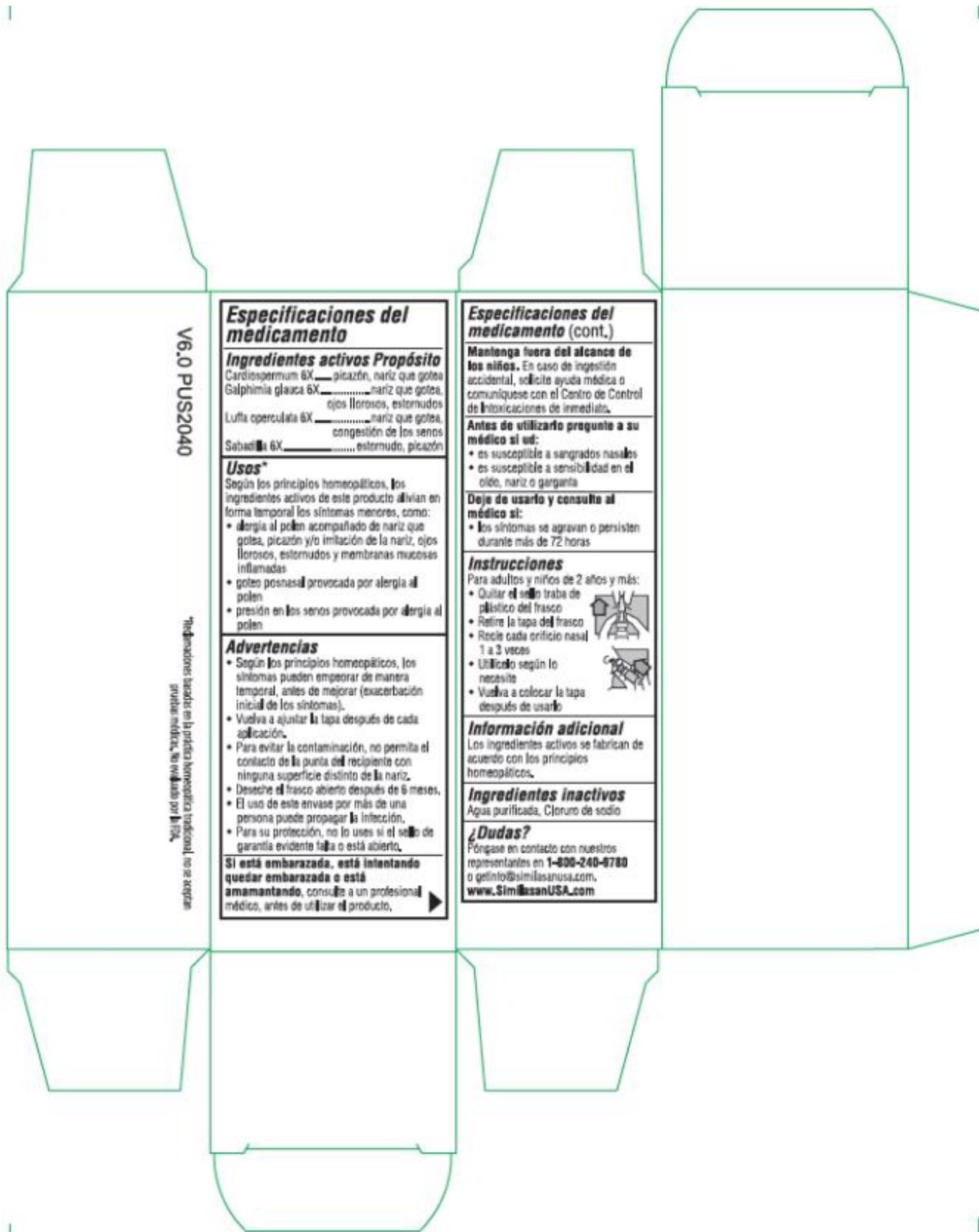
NDC 59262-241-20



unprinted/uncoated area Farb/Lackausparung

V6.0 PUS2040

Space (at minimum 7mm) EXP. and batch XX/XXXX XXX



V6.0 PUS2040

Referencias basadas en la práctica homeopática tradicional, no se requieren pruebas médicas, no evaluado por la FDA.

Especificaciones del medicamento

Ingredientes activos Propósito

Cardiospermum 6X..... picazón, nariz que gotea
 Galphimia glauca 6X..... nariz que gotea, ojos llorosos, estornudos
 Luffa operculata 6X..... nariz que gotea, congestión de los senos
 Sabadilla 6X..... estornudo, picazón

Usos*

Según los principios homeopáticos, los ingredientes activos de este producto alivian en forma temporal los síntomas menores, como:

- **alergia al polen** acompañado de nariz que gotea, picazón y/o irritación de la nariz, ojos llorosos, estornudos y membranas mucosas inflamadas
- **goteo posnasal** provocada por alergia al polen
- **presión en los senos** provocada por alergia al polen

Advertencias

- Según los principios homeopáticos, los síntomas pueden empeorar de manera temporal, antes de mejorar (exacerbación inicial de los síntomas).
- Vuelva a ajustar la tapa después de cada aplicación.
- Para evitar la contaminación, no permita el contacto de la punta del recipiente con ninguna superficie distinto de la nariz.
- Deseche el frasco abierto después de 6 meses.
- El uso de este envase por más de una persona puede propagar la infección.
- Para su protección, no lo uses si el sello de garantía evidente falta o está abierto.

Si está embarazada, está intentando quedar embarazada o está amamantando, consulte a un profesional médico, antes de utilizar el producto.

Especificaciones del medicamento (cont.)

Mantenga fuera del alcance de los niños. En caso de ingestión accidental, solicite ayuda médica o comuníquese con el Centro de Control de Intoxicaciones de inmediato.

Antes de utilizarlo pregunte a su médico si ud:

- es susceptible a sangrados nasales
- es susceptible a sensibilidad en el oído, nariz o garganta

Deje de usarlo y consulte al médico si:

- los síntomas se agravan o persisten durante más de 72 horas

Instrucciones

Para adultos y niños de 2 años y más:

- Quitar el **sello** traba de plástico del frasco
- Retire la tapa del frasco
- Recle cada orificio nasal 1 a 3 veces
- **Utilícelo** según lo necesite
- **Vuelva** a colocar la tapa después de usarlo



Información adicional

Los ingredientes activos se fabrican de acuerdo con los principios homeopáticos.

Ingredientes inactivos

Agua purificada, Cloruro de sodio

¿Dudas?

Póngase en contacto con nuestros representantes en 1-800-240-6780 o gelinfo@similasanusa.com, www.SimilasanUSA.com

NASAL ALLERGY RELIEF

cardiospermum halicacabum flowering top, galphimia glauca flowering top, luffa operculata fruit and schoenocaulon officinale seed spray

Product Information

Product Type	HUMAN OTC DRUG	Item Code (Source)	NDC:59262-241
Route of Administration	NASAL		

Active Ingredient/Active Moiety

Ingredient Name	Basis of Strength	Strength
CARDIOSPERMUM HALICACABUM FLOWERING TOP (UNII: MZP2508BRR) (CARDIOSPERMUM HALICACABUM FLOWERING TOP - UNII:MZP2508BRR)	CARDIOSPERMUM HALICACABUM FLOWERING TOP	6 [hp_X] in 20 mL
GALPHIMIA GLAUCA FLOWERING TOP (UNII: 93PH5Q8M7E) (GALPHIMIA GLAUCA FLOWERING TOP - UNII:93PH5Q8M7E)	GALPHIMIA GLAUCA FLOWERING TOP	6 [hp_X] in 20 mL
LUFFA OPERCULATA FRUIT (UNII: C4MO6809HU) (LUFFA OPERCULATA FRUIT - UNII:C4MO6809HU)	LUFFA OPERCULATA FRUIT	6 [hp_X] in 20 mL
SCHOENOCAULON OFFICINALE SEED (UNII: 6NAF1689IO) (SCHOENOCAULON OFFICINALE SEED - UNII:6NAF1689IO)	SCHOENOCAULON OFFICINALE SEED	6 [hp_X] in 20 mL

Inactive Ingredients

Ingredient Name	Strength
WATER (UNII: 059QF0KO0R)	
SODIUM CHLORIDE (UNII: 451W47IQ8X)	

Packaging

#	Item Code	Package Description	Marketing Start Date	Marketing End Date
1	NDC:59262-241-20	20 mL in 1 BOTTLE, SPRAY; Type 2: Prefilled Drug Delivery Device/System (syringe, patch, etc.)	05/15/2010	

Marketing Information

Marketing Category	Application Number or Monograph Citation	Marketing Start Date	Marketing End Date
unapproved homeopathic		05/15/2010	

Labeler - Similasan Corporation (111566530)

Revised: 4/2021

Similasan Corporation