

# TALZENNA- talazoparib capsule

## Pfizer Laboratories Div Pfizer Inc

### HIGHLIGHTS OF PRESCRIBING INFORMATION

These highlights do not include all the information needed to use TALZENNA safely and effectively. See full prescribing information for TALZENNA.

**TALZENNA® (talazoparib) capsules, for oral use**  
**Initial U.S. Approval: 2018**

### INDICATIONS AND USAGE

TALZENNA is a poly (ADP-ribose) polymerase (PARP) inhibitor indicated for:  
Breast Cancer

- As a single agent, for the treatment of adult patients with deleterious or suspected deleterious germline *BRCA*-mutated (g*BRCA*m) HER2-negative locally advanced or metastatic breast cancer. Select patients for therapy based on an FDA-approved companion diagnostic for TALZENNA. (1.1)

#### HRR Gene-mutated Metastatic Castration-Resistant Prostate Cancer (mCRPC)

- In combination with enzalutamide for the treatment of adult patients with HRR gene-mutated metastatic castration-resistant prostate cancer (mCRPC). (1.2)

### DOSAGE AND ADMINISTRATION

- Take TALZENNA with or without food. (2.4)

#### Breast Cancer

- The recommended dosage of TALZENNA is 1 mg taken orally once daily until disease progression or unacceptable toxicity. (2.2)
- For adverse reactions, consider dosing interruption or dose reduction. (2.5)

#### HRR Gene-mutated Metastatic Castration-Resistant Prostate Cancer (mCRPC)

- The recommended dosage of TALZENNA is 0.5 mg taken orally once daily with enzalutamide until disease progression or unacceptable toxicity. (2.3)
- Patients should also receive a gonadotrophic-releasing hormone (GnRH) analog concurrently or should have had bilateral orchiectomy. (2.3)

### DOSAGE FORMS AND STRENGTHS

Capsules: 0.1 mg, 0.25 mg, 0.35 mg, 0.5 mg, 0.75 mg, and 1 mg (3)

### CONTRAINDICATIONS

None. (4)

### WARNINGS AND PRECAUTIONS

- Myelodysplastic Syndrome/Acute Myeloid Leukemia (MDS/AML): MDS/AML occurred in patients exposed to TALZENNA, and some cases were fatal. Monitor patients for hematological toxicity and discontinue if MDS/AML is confirmed. (5.1)
- Myelosuppression: TALZENNA may affect hematopoiesis and can cause anemia, neutropenia, and/or thrombocytopenia. (5.2)
- Embryo-Fetal Toxicity: TALZENNA can cause fetal harm. Advise of the potential risk to the fetus and to use effective contraception. (5.3, 8.1, 8.3)

### ADVERSE REACTIONS

Most common adverse reactions ( $\geq 20\%$ ) as a single agent, including laboratory abnormalities, are:

- Hemoglobin decreased, neutrophils decreased, lymphocytes decreased, platelets decreased, fatigue, glucose increased, aspartate aminotransferase increased, alkaline phosphatase increased, alanine aminotransferase increased, calcium decreased, nausea, headache, vomiting, alopecia, diarrhea, and decreased appetite. (6.1)

Most common adverse reactions ( $\geq 10\%$ ) in combination with enzalutamide, including laboratory abnormalities, are:

- Hemoglobin decreased, neutrophils decreased, lymphocytes decreased, fatigue, platelets decreased, calcium decreased, nausea, decreased appetite, sodium decreased, phosphate decreased, fractures, magnesium decreased, dizziness, bilirubin increased, potassium decreased, and dysgeusia. (6.1)

**To report SUSPECTED ADVERSE REACTIONS, contact Pfizer Inc. at 1-800-438-1985 or FDA at 1-800-FDA-1088 or [www.fda.gov/medwatch](http://www.fda.gov/medwatch).**

#### ----- DRUG INTERACTIONS -----

- P-gp Inhibitors: Reduce the dose when coadministered with certain P-gp inhibitors. Monitor for increased adverse reactions. (2.7, 7.1)
- BCRP Inhibitors: Monitor for potential increased adverse reactions. (7.1)

#### ----- USE IN SPECIFIC POPULATIONS -----

- Lactation: Advise women not to breastfeed. (8.2)
- Renal Impairment: Reduce the dose and monitor for increased adverse reactions for patients with moderate or severe renal impairment. (2.6, 8.7)

**See 17 for PATIENT COUNSELING INFORMATION and FDA-approved patient labeling.**

**Revised: 6/2025**

---

## **FULL PRESCRIBING INFORMATION: CONTENTS\***

### **1 INDICATIONS AND USAGE**

- 1.1 *BRCA*-mutated (g*BRCAM*) HER2-negative Locally Advanced or Metastatic Breast Cancer
- 1.2 HRR Gene-mutated Metastatic Castration-Resistant Prostate Cancer (mCRPC)

### **2 DOSAGE AND ADMINISTRATION**

- 2.1 Patient Selection
- 2.2 Recommended Dosage for g*BRCAM* HER2-negative Locally Advanced or Metastatic Breast Cancer
- 2.3 Recommended Dosage for HRR Gene-mutated mCRPC
- 2.4 Administration
- 2.5 Dosage Modifications for Adverse Reactions
- 2.6 Recommended Dosage in Patients with Renal Impairment
- 2.7 Dosage Modifications for P-glycoprotein Inhibitors

### **3 DOSAGE FORMS AND STRENGTHS**

### **4 CONTRAINDICATIONS**

### **5 WARNINGS AND PRECAUTIONS**

- 5.1 Myelodysplastic Syndrome/Acute Myeloid Leukemia
- 5.2 Myelosuppression
- 5.3 Embryo-Fetal Toxicity

### **6 ADVERSE REACTIONS**

- 6.1 Clinical Trials Experience

### **7 DRUG INTERACTIONS**

- 7.1 Effect of Other Drugs on TALZENNA

### **8 USE IN SPECIFIC POPULATIONS**

- 8.1 Pregnancy
- 8.2 Lactation

8.3 Females and Males of Reproductive Potential

8.4 Pediatric Use

8.5 Geriatric Use

8.6 Hepatic Impairment

8.7 Renal Impairment

## **11 DESCRIPTION**

## **12 CLINICAL PHARMACOLOGY**

12.1 Mechanism of Action

12.2 Pharmacodynamics

12.3 Pharmacokinetics

## **13 NONCLINICAL TOXICOLOGY**

13.1 Carcinogenesis, Mutagenesis, Impairment of Fertility

## **14 CLINICAL STUDIES**

14.1 Deleterious or Suspected Deleterious Germline *BRCA*-mutated HER2-negative Locally Advanced or Metastatic Breast Cancer

14.2 HRR Gene-mutated mCRPC

## **16 HOW SUPPLIED/STORAGE AND HANDLING**

## **17 PATIENT COUNSELING INFORMATION**

\* Sections or subsections omitted from the full prescribing information are not listed.

---

# **FULL PRESCRIBING INFORMATION**

## **1 INDICATIONS AND USAGE**

### **1.1 *BRCA*-mutated (g*BRCA*m) HER2-negative Locally Advanced or Metastatic Breast Cancer**

TALZENNA is indicated as a single agent for the treatment of adult patients with deleterious or suspected deleterious germline breast cancer susceptibility gene (*BRCA*)-mutated (g*BRCA*m) human epidermal growth factor receptor 2 (HER2)-negative locally advanced or metastatic breast cancer. Select patients for therapy based on an FDA-approved companion diagnostic for TALZENNA [see *Dosage and Administration* (2.1)].

### **1.2 HRR Gene-mutated Metastatic Castration-Resistant Prostate Cancer (mCRPC)**

TALZENNA is indicated in combination with enzalutamide for the treatment of adult patients with homologous recombination repair (HRR) gene-mutated metastatic castration-resistant prostate cancer (mCRPC) [see *Dosage and Administration* (2.3)].

## **2 DOSAGE AND ADMINISTRATION**

### **2.1 Patient Selection**

Information on the FDA-approved tests for the detection of genetic mutations is available at <http://www.fda.gov/companiondiagnostics>.

### gBRCAm HER2-negative Locally Advanced or Metastatic Breast Cancer

Select patients for the treatment of advanced breast cancer with TALZENNA based on the presence of germline *BRCA* mutations [see *Indications and Usage (1.1)*, *Clinical Studies (14.1)*].

### HRR Gene-mutated Metastatic Castration-Resistant Prostate Cancer

Select patients for the treatment of HRR gene-mutated mCRPC with TALZENNA based on the presence of alterations in genes directly or indirectly involved in HRR (*ATM*, *ATR*, *BRCA1*, *BRCA2*, *CDK12*, *CHEK2*, *FANCA*, *MLH1*, *MRE11A*, *NBN*, *PALB2*, or *RAD51C*) [see *Indications and Usage (1.2)*, *Clinical Studies (14.2)*].

An FDA-approved test for the detection of HRR gene mutations for use with TALZENNA is not currently available.

## **2.2 Recommended Dosage for gBRCAm HER2-negative Locally Advanced or Metastatic Breast Cancer**

The recommended dosage of TALZENNA is 1 mg taken orally once daily, until disease progression or unacceptable toxicity.

## **2.3 Recommended Dosage for HRR Gene-mutated mCRPC**

The recommended dosage of TALZENNA is 0.5 mg taken orally once daily with enzalutamide until disease progression or unacceptable toxicity.

Refer to the enzalutamide prescribing information for recommended enzalutamide dosing information.

Patients receiving TALZENNA and enzalutamide should also receive a gonadotropin-releasing hormone (GnRH) analog concurrently or should have had bilateral orchiectomy.

## **2.4 Administration**

Take TALZENNA with or without food.

Swallow TALZENNA capsules whole. Do not open or dissolve.

If a patient vomits or misses a dose of TALZENNA, instruct them to take the next prescribed dose at the usual time.

## **2.5 Dosage Modifications for Adverse Reactions**

To manage adverse reactions, consider interruption of treatment with or without dose reduction based on severity and clinical presentation. Recommended dose reductions are indicated in Table 1 and Table 2. Treatment with TALZENNA should be discontinued if more than 3 dose reductions are required.

### gBRCAm HER2-negative Locally Advanced or Metastatic Breast Cancer

**Table 1. Dose Reduction Levels for Adverse Reactions—**

## Breast Cancer

Dose Reductions	Dose Level
Recommended starting dose	1 mg once daily
First dose reduction	0.75 mg once daily
Second dose reduction	0.5 mg once daily
Third dose reduction	0.25 mg once daily

HRR Gene-mutated mCRPC

**Table 2. Dose Reduction Levels for Adverse Reactions—  
mCRPC**

Dose Reductions	Dose Level
Recommended starting dose	0.5 mg once daily
First dose reduction	0.35 mg once daily
Second dose reduction	0.25 mg once daily
Third dose reduction	0.1 mg once daily

Refer to the enzalutamide prescribing information for dose modifications for adverse reactions associated with enzalutamide.

gBRCAm HER2-negative Locally Advanced or Metastatic Breast Cancer and HRR Gene-mutated mCRPC

Monitor complete blood counts monthly and as clinically indicated [see *Warnings and Precautions* (5.2)].

**Table 3. Dose Modification and Management for Adverse Reactions**

Adverse Reactions	Withhold TALZENNA Until Levels Resolve to	Resume TALZENNA
Hemoglobin <8 g/dL	≥9 g/dL	Resume TALZENNA at a reduced dose
Platelet count <50,000/μL	≥75,000/μL	
Neutrophil count <1,000/μL	≥1500/μL	
Non-hematologic Grade 3 or Grade 4	≤Grade 1	Consider resuming TALZENNA at a reduced dose or discontinue

## 2.6 Recommended Dosage in Patients with Renal Impairment

gBRCAm HER2-negative Locally Advanced or Metastatic Breast Cancer

The recommended dosage of TALZENNA for patients with moderate renal impairment (CLcr 30 - 59 mL/min) is 0.75 mg taken orally once daily [see *Use in Specific Populations*

(8.7)].

The recommended dosage of TALZENNA for patients with severe renal impairment (CLcr 15 - 29 mL/min) is 0.5 mg taken orally once daily [see *Use in Specific Populations* (8.7)].

#### HRR Gene-mutated mCRPC

The recommended dosage of TALZENNA for patients with moderate renal impairment (CLcr 30 - 59 mL/min) is 0.35 mg taken orally once daily with enzalutamide [see *Use in Specific Populations* (8.7)].

The recommended dosage of TALZENNA for patients with severe renal impairment (CLcr 15 - 29 mL/min) is 0.25 mg taken orally once daily with enzalutamide [see *Use in Specific Populations* (8.7)].

## **2.7 Dosage Modifications for P-glycoprotein Inhibitors**

### gBRCAm HER2-negative Locally Advanced or Metastatic Breast Cancer

Avoid coadministration of TALZENNA with the following P-glycoprotein (P-gp) inhibitors: itraconazole, amiodarone, carvedilol, clarithromycin, itraconazole, and verapamil. If coadministration of TALZENNA with these P-gp inhibitors cannot be avoided, reduce the dose of TALZENNA to 0.75 mg taken orally once daily. When the P-gp inhibitor is discontinued, increase the dose of TALZENNA (after 3 - 5 half-lives of the P-gp inhibitor) to the dose of TALZENNA that was used before starting the P-gp inhibitor [see *Drug Interactions* (7.1)].

Monitor for increased adverse reactions and modify the dosage as recommended for adverse reactions when TALZENNA is coadministered with other P-gp inhibitors [see *Dosage and Administration* (2.5)].

## **3 DOSAGE FORMS AND STRENGTHS**

**Table 4. Dosage Forms and Strengths**

<b>Capsule Strength</b>	<b>Description</b>
0.1 mg	White cap (printed with "Pfizer" in black) and a white body (printed with "TLZ 0.1" in black)
0.25 mg	Ivory cap (printed with "Pfizer" in black) and a white body (printed with "TLZ 0.25" in black)
0.35 mg	Ivory cap (printed with "Pfizer" in black) and an ivory body (printed with "TLZ 0.35" in black)
0.5 mg	Light pink cap (printed with "Pfizer" in black) and a white body (printed with "TLZ 0.5" in black)
0.75 mg	Light orange cap (printed with "Pfizer" in black) and a white body (printed with "TLZ 0.75" in black)
1 mg	Light red cap (printed with "Pfizer" in black) and a white body (printed with "TLZ 1" in black)

## **4 CONTRAINDICATIONS**

None.

## **5 WARNINGS AND PRECAUTIONS**

### **5.1 Myelodysplastic Syndrome/Acute Myeloid Leukemia**

Myelodysplastic Syndrome/Acute Myeloid Leukemia (MDS/AML), including cases with a fatal outcome, has been reported in patients who received TALZENNA.

Overall, MDS/AML has been reported in 0.4% (3 out of 788) of solid tumor patients treated with TALZENNA as a single agent in clinical studies. In TALAPRO-2, MDS/AML occurred in 2 out of 511 (0.4%) patients treated with TALZENNA and enzalutamide and in 0 out of 517 (0%) patients treated with placebo and enzalutamide [see *Adverse Reactions* (6.1)]. The durations of TALZENNA treatment in these 5 patients prior to developing MDS/AML were 0.3, 1, 2, 3, and 5 years. Most of these patients had received previous chemotherapy with platinum agents and/or other DNA damaging agents including radiotherapy.

Do not start TALZENNA until patients have adequately recovered from hematological toxicity caused by previous chemotherapy. Monitor blood counts monthly during treatment with TALZENNA. For prolonged hematological toxicities, interrupt TALZENNA and monitor blood counts weekly until recovery. If counts do not recover within 4 weeks, refer the patient to a hematologist for further investigations including bone marrow analysis and blood sample for cytogenetics. If MDS/AML is confirmed, discontinue TALZENNA.

### **5.2 Myelosuppression**

Myelosuppression consisting of anemia, neutropenia, and/or thrombocytopenia, have been reported in patients treated with TALZENNA [see *Adverse Reactions* (6.1)].

Grade  $\geq 3$  anemia, neutropenia, and thrombocytopenia were reported, respectively, in 39%, 21%, and 15% of patients receiving TALZENNA as a single agent. Discontinuation due to anemia, neutropenia, and thrombocytopenia occurred, respectively, in 0.7%, 0.3%, and 0.3% of patients.

In TALAPRO-2, Grade  $\geq 3$  anemia, neutropenia, and thrombocytopenia were reported, respectively, in 48%, 19%, and 9% of patients receiving TALZENNA and enzalutamide. Forty-two percent of patients (216/511) required a red blood cell transfusion, including 25% (127/511) who required more than one transfusion. Discontinuation due to anemia, neutropenia, and thrombocytopenia occurred, respectively, in 8%, 3%, and 0.4% of patients.

Withhold TALZENNA until patients have adequately recovered from hematological toxicity caused by previous therapy. Monitor blood counts monthly during treatment with TALZENNA. If hematological toxicities do not resolve within 28 days, discontinue TALZENNA and refer the patient to a hematologist for further investigations including bone marrow analysis and blood sample for cytogenetics [see *Dosage and Administration* (2.5)].

### **5.3 Embryo-Fetal Toxicity**

Based on its mechanism of action and findings from animal data, TALZENNA can cause

fetal harm when administered to a pregnant woman. In an animal reproduction study, administration of talazoparib to pregnant rats during the period of organogenesis caused fetal malformations and structural skeletal variations, and embryo-fetal death at exposures that were 0.24 times the area under the concentration-time curve (AUC) in patients receiving the recommended human dose of 1 mg daily. Apprise pregnant women and females of reproductive potential of the potential risk to a fetus. Advise females of reproductive potential to use effective contraception during treatment and for 7 months following the last dose of TALZENNA [see *Use in Specific Populations* (8.1, 8.3), *Clinical Pharmacology* (12.1)].

Based on findings from genetic toxicity and animal reproduction studies, advise male patients with female partners of reproductive potential or who are pregnant to use effective contraception during treatment and for 4 months following the last dose of TALZENNA [see *Use in Specific Populations* (8.1, 8.3), *Nonclinical Toxicology* (13.1)].

## 6 ADVERSE REACTIONS

The following clinically significant adverse reactions are described elsewhere in the labeling:

- Myelodysplastic Syndrome/Acute Myeloid Leukemia [see *Warnings and Precautions* (5.1)]
- Myelosuppression [see *Warnings and Precautions* (5.2)]

### 6.1 Clinical Trials Experience

Because clinical trials are conducted under widely varying conditions, adverse reaction rates observed in the clinical trials of a drug cannot be directly compared to rates in the clinical trials of another drug and may not reflect the rates observed in practice.

The data described in the WARNINGS AND PRECAUTIONS section reflect exposure to single agent TALZENNA in solid tumor clinical studies, including 286 patients enrolled in EMBRACA trial and to TALZENNA 0.5 mg daily with enzalutamide in 511 patients enrolled in the TALAPRO-2 trial that included 197 patients with HRR gene-mutated mCRPC.

#### gBRCAm HER2-negative Locally Advanced or Metastatic Breast Cancer

##### **EMBRACA**

The safety of TALZENNA as a single agent was evaluated in gBRCAm patients with HER2-negative locally advanced or metastatic breast cancer who had previously received no more than 3 lines of chemotherapy for the treatment of locally advanced/metastatic disease [see *Clinical Studies* (14.1)]. EMBRACA was a randomized, open-label, multi-center study in which 412 patients received either TALZENNA 1 mg once daily (N=286) or a chemotherapy agent (capecitabine, eribulin, gemcitabine, or vinorelbine) of the healthcare provider's choice (N=126) until disease progression or unacceptable toxicity. The median duration of study treatment was 6.1 months in patients who received TALZENNA and 3.9 months in patients who received chemotherapy.

Serious adverse reactions of TALZENNA occurred in 32% of patients. Serious adverse reactions reported in >2% of patients included anemia (6%) and pyrexia (2%). Fatal adverse reactions occurred in 1% of patients, including cerebral hemorrhage, liver



disorder, veno-occlusive liver disease, and worsening neurological symptoms (1 patient each).

Permanent discontinuation due to adverse reactions occurred in 5% of TALZENNA patients. Dosing interruptions due to an adverse reaction of any grade occurred in 65% of patients receiving TALZENNA; dose reductions due to any cause occurred in 53% of TALZENNA patients.

The most common ( $\geq 20\%$ ) adverse reactions, including laboratory abnormalities, were hemoglobin decreased, neutrophils decreased, lymphocytes decreased, platelets decreased, fatigue, glucose increased, aspartate aminotransferase increased, alkaline phosphatase increased, alanine aminotransferase increased, calcium decreased, nausea, headache, vomiting, alopecia, diarrhea, and decreased appetite.

Table 5 and Table 6 summarize the most common adverse reactions and laboratory abnormalities, respectively, in patients treated with TALZENNA or chemotherapy in the EMBRACA study.

**Table 5. Adverse Reactions\* ( $\geq 20\%$ ) in Patients Receiving TALZENNA in EMBRACA**

Adverse Reactions	TALZENNA N=286 (%)			Chemotherapy N=126 (%)		
	Grades 1-4	Grade 3	Grade 4	Grades 1-4	Grade 3	Grade 4
<b>General Disorders and Administration Site Conditions</b>						
Fatigue†	62	3	0	50	5	0
<b>Gastrointestinal Disorders</b>						
Nausea	49	0.3	0	47	2	0
Vomiting	25	2	0	23	2	0
Diarrhea	22	1	0	26	6	0
<b>Nervous System Disorders</b>						
Headache	33	2	0	22	1	0
<b>Skin and Subcutaneous Tissue Disorders</b>						
Alopecia	25	0	0	28	0	0
<b>Metabolism and Nutrition Disorders</b>						
Decreased appetite	21	0.3	0	22	1	0

Abbreviation: N=number of patients.

\* Graded according to NCI CTCAE 4.03.

† Includes fatigue and asthenia.

Clinically relevant adverse reactions in  $< 20\%$  of patients who received TALZENNA included abdominal pain (19%), dizziness (17%), dysgeusia (10%), dyspepsia (10%), stomatitis (8%), and febrile neutropenia (0.3%).

**Table 6. Select Laboratory Abnormalities ( $\geq 25\%$ ) of Patients in EMBRACA**

	TALZENNA N*=286 (%)	Chemotherapy N*=126 (%)
--	------------------------	----------------------------

<b>Parameter</b>	<b>Grades 1-4</b>	<b>Grade 3</b>	<b>Grade 4</b>	<b>Grades 1-4</b>	<b>Grade 3</b>	<b>Grade 4</b>
Hemoglobin decreased	90	39	0	77	6	0
Neutrophils decreased	68	17	3	70	21	17
Lymphocytes decreased	76	17	0.7	53	8	0.8
Platelets decreased	55	11	4	29	2	0
Glucose increased†	54	2	0	51	2	0
Aspartate aminotransferase Increased	37	2	0	48	3	0
Alkaline phosphatase increased	36	2	0	34	2	0
Alanine aminotransferase increased	33	1	0	37	2	0
Calcium decreased	28	1	0	16	0	0

Abbreviation: N=number of patients.

\* This number represents the safety population. The derived values in the table are based on the total number of evaluable patients for each laboratory parameter.

† This number represents non-fasting glucose.

### HRR Gene-mutated mCRPC

The safety of TALZENNA with enzalutamide was evaluated in patients with HRR gene-mutated mCRPC enrolled in TALAPRO-2 [see *Clinical Studies (14.2)*]. Patients were randomized to receive either TALZENNA 0.5 mg with enzalutamide 160 mg once daily (n=197), or placebo with enzalutamide 160 mg once daily (n=199) until disease progression or unacceptable toxicity. Among patients receiving TALZENNA, 86% were exposed for 6 months or longer, 60% were exposed for greater than one year, and 18% were exposed for greater than two years.

Serious adverse reactions of TALZENNA with enzalutamide occurred in 30% of patients. Serious adverse reactions reported in >2% of patients included anemia (9%) and fracture (3%). Fatal adverse reactions occurred in 1.5% of patients, including pneumonia, COVID infection, and sepsis (1 patient each).

Permanent discontinuation of TALZENNA due to adverse reactions occurred in 10% of patients treated in the TALZENNA with enzalutamide arm. The most common adverse reactions which resulted in permanent discontinuation of TALZENNA were anemia (4%), fatigue, bone fracture, ischemic heart disease, and spinal cord compression (1% each).

Dosage interruption of TALZENNA due to adverse reactions occurred in 58% of patients treated in the TALZENNA with enzalutamide arm. The most common adverse reactions which resulted in dose interruption of TALZENNA were anemia (42%), neutropenia

(15%), and platelet count decreased (9%) and fatigue (5%).

Dose reduction of TALZENNA due to adverse reactions occurred in 52% of patients treated in the TALZENNA with enzalutamide arm. The most common adverse reactions which resulted in dose reduction of TALZENNA were anemia (43%), neutrophil count decreased (15%), platelet count decreased (6%), and fatigue (4%).

The most common adverse reactions ( $\geq 10\%$ ), including laboratory abnormalities, in patients who received TALZENNA with enzalutamide were hemoglobin decreased, neutrophils decreased, lymphocytes decreased, fatigue, platelets decreased, calcium decreased, nausea, decreased appetite, sodium decreased, phosphate decreased, fractures, magnesium decreased, dizziness, bilirubin increased, potassium decreased, and dysgeusia.

Table 7 and Table 8 summarize the most common adverse reactions and laboratory abnormalities, respectively, in the TALAPRO-2 study.

**Table 7. Adverse Reactions\* ( $\geq 10\%$ ) in Patients Receiving TALZENNA (with a Difference Between Arms of  $\geq 2\%$ ) in TALAPRO-2**

	TALZENNA with Enzalutamide N=197			Placebo with Enzalutamide N=199		
	Grades 1-4 %	Grade 3 %	Grade 4 %	Grades 1-4 %	Grade 3 %	Grade 4 %
Fatigue <sup>†</sup>	49	4	0	40	1	0
Nausea	21	2	0	17	1	0.5
Decreased appetite	20	1	0	14	1	1
Fractures <sup>‡</sup>	14	3	0	10	1.5	0
Dizziness <sup>§</sup>	13	1.5	0	9	1.5	0
Dysgeusia <sup>¶</sup>	10	0	0	4.5	0	0

Abbreviation: N=number of patients.

\* Graded according to NCI CTCAE 4.03.

† Includes fatigue and asthenia.

‡ Fractures include multiple similar terms.

§ Includes dizziness, dizziness postural, vertigo.

¶ Includes ageusia, anosmia, dysgeusia.

Clinically relevant adverse reactions in  $<10\%$  of patients who received TALZENNA with enzalutamide included abdominal pain (9%), vomiting (9%), alopecia (7%), dyspepsia (4%), venous thromboembolism (3%) and stomatitis (2%).

**Table 8. Select Laboratory Abnormalities ( $\geq 10\%$ ) That Worsened from Baseline in Patients Who Received TALZENNA in TALAPRO-2**

Laboratory Abnormality	TALZENNA with Enzalutamide N=197*			Placebo with Enzalutamide N=199*		
	Grades 1-4 %	Grade 3 %	Grade 4 %	Grades 1-4 %	Grade 3 %	Grade 4 %

Hemoglobin decreased	79	41	0	34	6	0
Neutrophils decreased	60	18	1	18	0	1
Lymphocytes decreased	58	13	0	36	7	0
Platelets decreased	45	6	3	8	0.5	0
Calcium decreased	25	0	1	11	0	1
Sodium decreased	22	3	0	20	1.5	0
Phosphate decreased	17	3	1	13	2	0
Magnesium decreased	14	0	1	12	0	0.5
Bilirubin increased	11	0.5	0	7	0	0
Potassium decreased	11	0	1	7	1	0.5

Abbreviation: N=number of patients.

\* The denominator used to calculate the rate varied from 198 to 199 in the placebo with enzalutamide arm based on the number of patients with a baseline value and at least one post-treatment value.

## 7 DRUG INTERACTIONS

### 7.1 Effect of Other Drugs on TALZENNA

#### Effect of P-gp Inhibitors

##### *Breast Cancer*

Avoid coadministration of TALZENNA with the following P-gp inhibitors: itraconazole, amiodarone, carvedilol, clarithromycin, itraconazole, and verapamil. If coadministration of TALZENNA with these P-gp inhibitors cannot be avoided, reduce the dose of TALZENNA [see *Dosage and Administration* (2.7)]. When the P-gp inhibitor is discontinued, increase the dose of TALZENNA [see *Dosage and Administration* (2.7)].

Coadministration of TALZENNA with these P-gp inhibitors increased talazoparib concentrations [see *Clinical Pharmacology* (12.3)], which may increase the risk of adverse reactions.

Monitor for increased adverse reactions and modify the dosage as recommended for adverse reactions when TALZENNA is coadministered with other P-gp inhibitors [see *Dosage and Administration* (2.5)].

##### *HRR Gene-mutated mCRPC*

The effect of coadministration of P-gp inhibitors on talazoparib exposure when TALZENNA is taken with enzalutamide has not been studied. Monitor patients for increased adverse reactions and modify the dosage as recommended for adverse

reactions when TALZENNA is coadministered with a P-gp inhibitor [see *Dosage and Administration* (2.5)].

### Effect of Breast Cancer Resistance Protein (BCRP) Inhibitors

Monitor patients for increased adverse reactions and modify the dosage as recommended for adverse reactions when TALZENNA is coadministered with a BCRP inhibitor [see *Dosage and Administration* (2.5)].

Coadministration of TALZENNA with BCRP inhibitors may increase talazoparib exposure [see *Clinical Pharmacology* (12.3)], which may increase the risk of adverse reactions.

## **8 USE IN SPECIFIC POPULATIONS**

### **8.1 Pregnancy**

#### Risk Summary

Based on findings from animal studies and its mechanism of action [see *Clinical Pharmacology* (12.1)], TALZENNA can cause embryo-fetal harm when administered to a pregnant woman. There are no available data on TALZENNA use in pregnant women to inform a drug-associated risk. In an animal reproduction study, the administration of talazoparib to pregnant rats during the period of organogenesis caused fetal malformations and structural skeletal variations and embryo-fetal death at maternal exposures that were 0.24 times the AUC in patients receiving the recommended dose of 1 mg daily (see *Data*). Apprise pregnant women and females of reproductive potential of the potential risk to a fetus.

The background risk of major birth defects and miscarriage for the indicated population is unknown. In the general U.S. population, the estimated background risks of major birth defects and miscarriage in clinically recognized pregnancies are 2% to 4% and 15% to 20%, respectively.

#### Data

##### *Animal Data*

In an embryo-fetal development toxicity study, pregnant rats received oral doses of 0.015, 0.05, and 0.15 mg/kg/day talazoparib during the period of organogenesis. Talazoparib caused embryo-fetal death at doses  $\geq 0.015$  mg/kg/day (approximately 0.24 times the AUC in patients at the recommended dose of 1 mg daily). A dose of 0.015 mg/kg/day caused decreased fetal body weights and an increased incidence of fetal malformations (depressed eye bulge, small eye, split sternebra, and fused cervical vertebral arch) and structural variations including misshapen or incomplete ossification of the sternebra, skull, rib, and vertebra.

### **8.2 Lactation**

#### Risk Summary

There are no data on the presence of talazoparib in human milk, the effects of the drug on milk production, or the effects of the drug on the breastfed child. Because of the potential for serious adverse reactions in a breastfed child from talazoparib, advise lactating women not to breastfeed during treatment with TALZENNA and for 1 month after the last dose.

### **8.3 Females and Males of Reproductive Potential**

TALZENNA can cause fetal harm when administered to pregnant women [*see Use in Specific Populations (8.1)*].

#### Pregnancy Testing

Verify pregnancy status in females of reproductive potential prior to initiating TALZENNA treatment.

#### Contraception

##### *Females*

Advise females of reproductive potential to use effective contraception during treatment and for 7 months following the last dose of TALZENNA.

##### *Males*

Based on genotoxicity and animal reproduction studies, advise male patients with female partners of reproductive potential and pregnant partners to use effective contraception during treatment with TALZENNA and for 4 months following the last dose [*see Use in Specific Populations (8.1), Nonclinical Toxicology (13.1)*].

#### Infertility

##### *Males*

Based on animal studies, TALZENNA may impair fertility in males of reproductive potential [*see Nonclinical Toxicology (13.1)*].

### **8.4 Pediatric Use**

The safety and effectiveness of TALZENNA have not been established in pediatric patients.

### **8.5 Geriatric Use**

In clinical trials of TALZENNA enrolling 494 patients with advanced solid tumors who received TALZENNA 1 mg daily as a single agent, 85 (17%) patients were  $\geq 65$  years of age, and this included 19 (4%) patients who were  $\geq 75$  years old. There were 5 patients  $\geq 85$  years old. In the TALAPRO-2 trial, of 197 patients who received TALZENNA, 77% were  $\geq 65$  years of age, while 30% were  $\geq 75$  years of age. No overall differences in safety or effectiveness of TALZENNA were observed between these patients and younger patients.

### **8.6 Hepatic Impairment**

No dosage modification is recommended for patients with hepatic impairment [*see Clinical Pharmacology (12.3)*].

### **8.7 Renal Impairment**

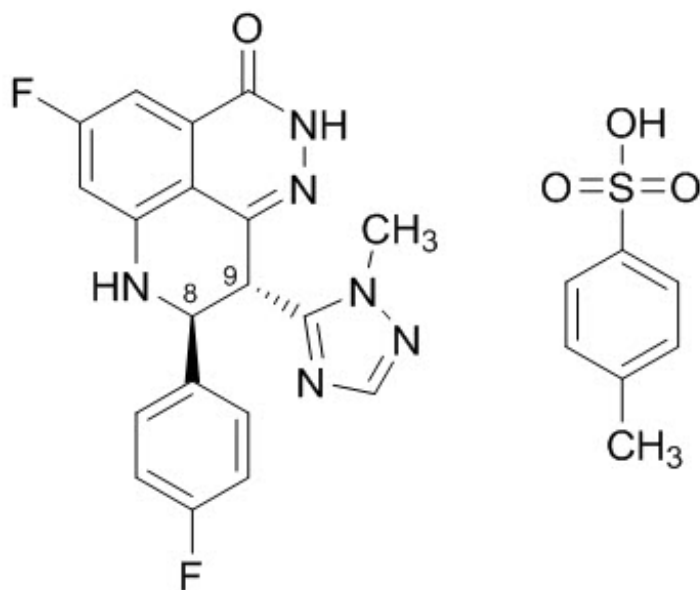
Reduce the recommended dosage of TALZENNA in patients with moderate (CLcr 30 – 59 mL/min) and severe (CLcr 15 – 29 mL/min) renal impairment [*see Dosage and Administration (2.7)*]. Monitor patients with severe renal impairment for increased adverse reactions and modify the dosage as recommended for adverse reactions [*see Dosage and Administration (2.5)*].

No dose adjustment is recommended for patients with mild renal impairment (CLcr 60 –

89 mL/min). TALZENNA has not been studied in patients requiring hemodialysis.

## 11 DESCRIPTION

Talazoparib is an inhibitor of mammalian polyadenosine 5'-diphosphoribose (ADP-ribose) polymerase (PARP) enzymes. The chemical name of talazoparib tosylate is (8*S*,9*R*)-5-Fluoro-8-(4-fluorophenyl)-9-(1-methyl-1*H*-1,2,4-triazol-5-yl)-2,7,8,9-tetrahydro-3*H*-pyrido[4,3,2-*de*]phthalazin-3-one 4-methylbenzenesulfonate (1:1). The chemical formula of talazoparib tosylate is C<sub>26</sub>H<sub>22</sub>F<sub>2</sub>N<sub>6</sub>O<sub>4</sub>S, and the relative molecular mass is 552.56 Daltons. The chemical structure of talazoparib tosylate is shown below:



Talazoparib tosylate is a white to yellow solid. TALZENNA capsules for oral use are available as:

- 0.1 mg hard hypromellose (HPMC) capsule that contains 0.145 mg talazoparib tosylate equivalent to 0.1 mg talazoparib free base, or
- 0.25 mg HPMC capsule that contains 0.363 mg talazoparib tosylate equivalent to 0.25 mg talazoparib free base, or
- 0.35 mg HPMC capsule that contains 0.509 mg talazoparib tosylate equivalent to 0.35 mg talazoparib free base, or
- 0.5 mg HPMC capsule that contains 0.727 mg talazoparib tosylate equivalent to 0.5 mg talazoparib free base, or
- 0.75 mg HPMC capsule that contains 1.09 mg talazoparib tosylate equivalent to 0.75 mg talazoparib free base, or
- 1 mg HPMC capsule that contains 1.453 mg talazoparib tosylate equivalent to 1 mg talazoparib free base.

Inactive ingredients: silicified microcrystalline cellulose (sMCC). The capsule shells contain hypromellose (HPMC), yellow iron oxide, red iron oxide and titanium dioxide; and the printing ink contains shellac, black iron oxide, potassium hydroxide, ammonium hydroxide, and propylene glycol.

## 12 CLINICAL PHARMACOLOGY

### 12.1 Mechanism of Action

Talazoparib is an inhibitor of PARP enzymes, including PARP1 and PARP2, which play a role in DNA repair. *In vitro* studies with cancer cell lines that harbored defects in DNA repair genes, including *BRCA1* and *BRCA2*, have shown that talazoparib-induced cytotoxicity may involve inhibition of PARP enzymatic activity and increased formation of PARP-DNA complexes resulting in DNA damage, decreased cell proliferation, and apoptosis. Talazoparib anti-tumor activity was observed in patient-derived xenograft breast cancer models bearing mutated *BRCA1* or mutated *BRCA2* or wild type *BRCA1* and *BRCA2*.

### 12.2 Pharmacodynamics

The exposure-response relationship and time course of pharmacodynamic response for the safety and effectiveness of TALZENNA have not been fully characterized.

#### Cardiac Electrophysiology

At a dose of 1 mg (the recommended dosage for treatment of breast cancer), TALZENNA had no large QTc prolongation (i.e., >20 ms).

### 12.3 Pharmacokinetics

After administration of TALZENNA 1 mg orally once daily as a single agent (the recommended dosage for breast cancer), the mean [% coefficient of variation (CV%)] AUC and maximum observed plasma concentration ( $C_{\max}$ ) of talazoparib at steady-state was 208 (37%) ng.hr/mL and 16.4 (32%) ng/mL, respectively. The mean (CV%) steady-state  $C_{\text{trough}}$  was 3.53 (61%) ng/mL.

After administration of TALZENNA 0.5 mg orally once daily (the recommended dosage for prostate cancer) with enzalutamide, the mean (CV%) steady-state  $C_{\text{trough}}$  ranged from 3.29 to 3.68 ng/mL (45% to 48%).

The pharmacokinetics (PK) of talazoparib is linear from 0.025 mg to 2 mg (2 times the recommended dose for breast cancer). The median accumulation ratio of talazoparib following 1 mg orally once daily is 2.3 to 5.2. Talazoparib plasma concentrations reached steady-state within 2 to 3 weeks when administered as a single agent and within 9 weeks when coadministered with enzalutamide.

#### Absorption

The median time to  $C_{\max}$  ( $T_{\max}$ ) was generally between 1 to 2 hours after dosing.

#### Food Effect

Following a single TALZENNA 0.5 mg dose with high-fat, high-calorie food (approximately 800 to 1000 calories with 150, 250, and 500 to 600 calories from protein, carbohydrate, and fat, respectively), the mean  $C_{\max}$  was decreased by 46%, the median  $T_{\max}$  was delayed from 1 to 4 hours, and AUC was not affected.

#### Distribution

The mean apparent volume of distribution of talazoparib is 420 L. *In vitro*, protein binding of talazoparib is 74% and is independent of talazoparib concentration.



### Elimination

The mean terminal plasma half-life ( $\pm$ standard deviation) is 90 ( $\pm$ 58) hours and the mean apparent oral clearance (inter-subject variability) is 6.45 L/h (31%).

### *Metabolism*

Talazoparib undergoes minimal hepatic metabolism. The identified metabolic pathways include mono-oxidation, dehydrogenation, cysteine conjugation of mono-desfluoro-talazoparib, and glucuronide conjugation.

### *Excretion*

Excretion of talazoparib in urine was the major route of elimination. Approximately 68.7% (54.6% unchanged) of the total administered radiolabeled dose of talazoparib was recovered in urine, and 19.7% (13.6% unchanged) was recovered in feces.

### Specific Populations

Age (18 to 88 years), sex, race (361 White, 41 Asian, 16 Black, 9 Others, and 63 Not Reported), body weight (36 to 162 kg), and mild to severe hepatic impairment had no clinically significant effect on the PK of talazoparib.

### *Patients with Renal Impairment*

Mild (eGFR 60 – 89 mL/min/1.73 m<sup>2</sup>) renal impairment had no clinically significant effect on talazoparib pharmacokinetics. Talazoparib steady-state total exposure (AUC) increased by 43% in subjects with moderate (eGFR 30 – 59 mL/min/1.73 m<sup>2</sup>) renal impairment and 163% in patients with severe (eGFR 15 – 29 mL/min/1.73 m<sup>2</sup>) renal impairment relative to subjects with normal renal function (eGFR  $\geq$  90 mL/min/1.73 m<sup>2</sup>). Talazoparib steady-state peak concentration (C<sub>max</sub>) increased by 32% in subjects with moderate renal impairment and 89% in subjects with severe renal impairment, relative to subjects with normal renal function. Similar increases in AUC were observed with talazoparib when given with enzalutamide for patients with moderate and severe renal impairment. The PK of talazoparib has not been studied in patients requiring hemodialysis. There was no evidence of a relationship between the protein binding of talazoparib and renal function.

### Drug Interaction Studies

#### *Clinical Studies*

*Effect of P-gp Inhibitors:* Coadministration of a P-gp inhibitor (itraconazole) with a single 0.5 mg dose of TALZENNA increased talazoparib AUC and C<sub>max</sub> by approximately 56% and 40%, respectively. Coadministration with the following other P-gp inhibitors: amiodarone, carvedilol, clarithromycin, itraconazole, and verapamil increased talazoparib exposure by 45%.

Coadministration with other P-gp inhibitors (including azithromycin, atorvastatin, diltiazem, felodipine, fluvoxamine, and quercetin) had no clinically significant effect on talazoparib pharmacokinetics.

*Effect of P-gp Inducers:* Coadministration of a P-gp inducer (rifampin) with a single 1 mg dose of TALZENNA increased talazoparib C<sub>max</sub> by 37% with no effect on talazoparib AUC.

*Effect of Acid-Reducing Agents:* Coadministration of acid-reducing agents including proton pump inhibitors (PPI), histamine receptor 2 antagonists (H<sub>2</sub>RA), or other acid-reducing agents has no effect on the absorption of talazoparib.

*Enzalutamide:* Coadministration of enzalutamide with TALZENNA increased talazoparib

exposure approximately 2-fold.

#### *In Vitro Studies*

**Transporters:** Talazoparib is a substrate of P-gp and BCRP transporters, but not a substrate of OATP1B1, OATP1B3, OCT1, OCT2, OAT1, OAT3, BSEP, MATE1, or MATE2-K.

Talazoparib is not an inhibitor of P-gp, BCRP, OATP1B1, OATP1B3, OCT1, OCT2, OAT1, OAT3, BSEP, MATE1, or MATE2-K.

**CYP Enzymes:** Talazoparib is not an inhibitor of CYP1A2, CYP2B6, CYP2C8, CYP2C9, CYP2C19, CYP2D6, or CYP3A4/5.

Talazoparib is not an inducer of CYP1A2, CYP2B6, or CYP3A4.

**UGT:** Talazoparib is not an inhibitor of UGT isoforms (1A1, 1A4, 1A6, 1A9, 2B7, and 2B15).

## **13 NONCLINICAL TOXICOLOGY**

### **13.1 Carcinogenesis, Mutagenesis, Impairment of Fertility**

Carcinogenicity studies have not been conducted with talazoparib.

Talazoparib was clastogenic in an *in vitro* chromosomal aberration assay in human peripheral blood lymphocytes and in an *in vivo* bone marrow micronucleus assay in rats. This clastogenicity is consistent with genomic instability resulting from the primary pharmacology of talazoparib, indicating the potential for genotoxicity in humans. Talazoparib was not mutagenic in a bacterial reverse mutation (Ames) test.

Fertility studies in animals have not been conducted with talazoparib. In repeat-dose toxicity studies up to 3-months duration, talazoparib-related findings in the testis and epididymis at doses  $\geq 0.04$  mg/kg/day in rats and  $\geq 0.01$  mg/kg/day in dogs included decreased organ weights, luminal cellular debris, reduced sperm, and degeneration/atrophy. These doses in rats and dogs resulted in approximately 1.0 times and 0.2 times, respectively, the exposure (AUC) in humans at the recommended dose of 1 mg daily. Follicular atresia of the ovary was observed in rats at doses  $\geq 1$  mg/kg/day talazoparib, approximately 9.5 times the AUC in patients at the recommended dose of 1 mg daily.

## **14 CLINICAL STUDIES**

### **14.1 Deleterious or Suspected Deleterious Germline *BRCA*-mutated HER2-negative Locally Advanced or Metastatic Breast Cancer**

EMBRACA (NCT01945775) was an open-label study in which patients (N=431) with gBRCAm HER2-negative locally advanced or metastatic breast cancer were randomized 2:1 to receive TALZENNA 1 mg or healthcare provider's choice of chemotherapy (capecitabine, eribulin, gemcitabine, or vinorelbine) until disease progression or unacceptable toxicity. Randomization was stratified by prior lines of chemotherapy for

metastatic disease (0 versus 1, 2, or 3), by triple-negative disease status [triple-negative breast cancer (TNBC) versus non-TNBC], and history of central nervous system (CNS) metastasis (yes versus no).

Patients received no more than 3 prior cytotoxic chemotherapy regimens for their metastatic or locally advanced disease. Patients were required to have received treatment with an anthracycline and/or a taxane (unless contraindicated) in the neoadjuvant, adjuvant, and/or metastatic treatment setting. First-line treatment for advanced or metastatic disease with no prior adjuvant chemotherapy was allowed if the investigator determined that 1 of the 4 chemotherapy choices in the control arm would be an appropriate treatment option for the patient. Patients with prior platinum therapy for advanced disease were required to have no evidence of disease progression during platinum therapy. No prior treatment with a PARP inhibitor was permitted. Of the 431 patients randomized in the EMBRACA study, 408 (95%) were centrally confirmed to have a deleterious or suspected deleterious gBRCAm using a clinical trial assay; out of which 354 (82%) were confirmed using the BRACAnalysis CDx<sup>®</sup>. BRCA mutation status [breast cancer susceptibility gene 1 (*BRCA1*)-positive or breast cancer susceptibility gene 2 (*BRCA2*)-positive] was similar across both treatment arms.

The median age of patients treated with TALZENNA was 46 years (range 28 to 84) and 51 years (range 24 to 89) among patients treated with chemotherapy. Among all randomized patients, 1% versus 2% were males, 67% versus 75% were White; 11% versus 11% were Asian, and 4% versus 1% were Black or African American in the TALZENNA and chemotherapy arms, respectively. Almost all patients (98%) in both arms had an Eastern Cooperative Oncology Group (ECOG) performance status of 0 or 1. Approximately 56% of patients had estrogen receptor-positive and/or progesterone receptor-positive disease; 44% of patients had triple-negative disease, and the proportions were balanced across both treatment arms. Fifteen percent (15%) of patients in the TALZENNA arm and 14% of patients in the chemotherapy arm had a history of CNS metastases. Ninety-one percent (91%) of patients in the TALZENNA arm had received prior taxane therapy, and 85% had received prior anthracycline therapy in any setting. Sixteen percent (16%) of patients in the TALZENNA arm and 21% of patients in the chemotherapy arm had received prior platinum treatment in any setting. The median number of prior cytotoxic regimens for patients with advanced breast cancer was one; 38% received no prior cytotoxic regimens for advanced or metastatic disease, 37% received one, 20% received two, and 5% received three or more prior cytotoxic regimens.

The major efficacy outcome measure was progression-free survival (PFS) evaluated according to Response Evaluation Criteria in Solid Tumors (RECIST) version 1.1, as assessed by blinded independent central review (BICR). A statistically significant improvement in PFS was demonstrated for TALZENNA compared to chemotherapy. A sensitivity analysis of investigator-assessed PFS was consistent with the BICR-assessed PFS results. Consistent PFS results were observed across patient subgroups defined by study stratification factors (prior lines of chemotherapy, TNBC status, and history of CNS metastases). Efficacy data from the EMBRACA study are summarized in Table 9, and the Kaplan-Meier curves for PFS are shown in Figure 1 and final overall survival (OS) in Figure 2.

**Table 9. Efficacy Results - EMBRACA Study**

---

	<b>TALZENNA</b>	<b>Chemotherapy</b>
<b>PFS by BICR</b>	N=287	N=144
Disease progression or deaths, n (%)	186 (65)	83 (58)
Median months (95% CI)	8.6 (7.2, 9.3)	5.6 (4.2, 6.7)
Hazard ratio (95% CI)*	0.54 (0.41, 0.71)	
p-value†	p<0.0001	
<b>Patients with Measurable Disease by Investigator‡</b>	N=219	N=114
ORR, % (95% CI)§	50.2 (43.4, 57.0)	18.4 (11.8, 26.8)
Median¶ DOR months (95% CI)	6.4 (5.4, 9.5)	3.9 (3.0, 7.6)
<b>OS</b>	N=287	N=144
Deaths, n (%)	216 (75)	108 (75)
Median months (95% CI)	19.3 (16.6, 22.5)	19.5 (17.4, 22.4)
Hazard ratio (95% CI)*	0.85 (0.67, 1.07)	
p-value†	p=0.1693	

Abbreviations: BICR=blinded independent central review; CI=confidence interval;

DOR=duration of response; ITT=intent-to-treat; N=number of patients;

ORR=objective response rate; OS=overall survival; PFS=progression-free survival.

\* Hazard ratio is estimated from a Cox proportional hazards model stratified by prior use of chemotherapy for metastatic disease (0 versus 1, 2, or 3), by triple-negative disease status [triple-negative breast cancer (TNBC) versus non-TNBC], and by history of central nervous system metastasis (yes versus no) and is relative to overall chemotherapy with <1 favoring talazoparib.

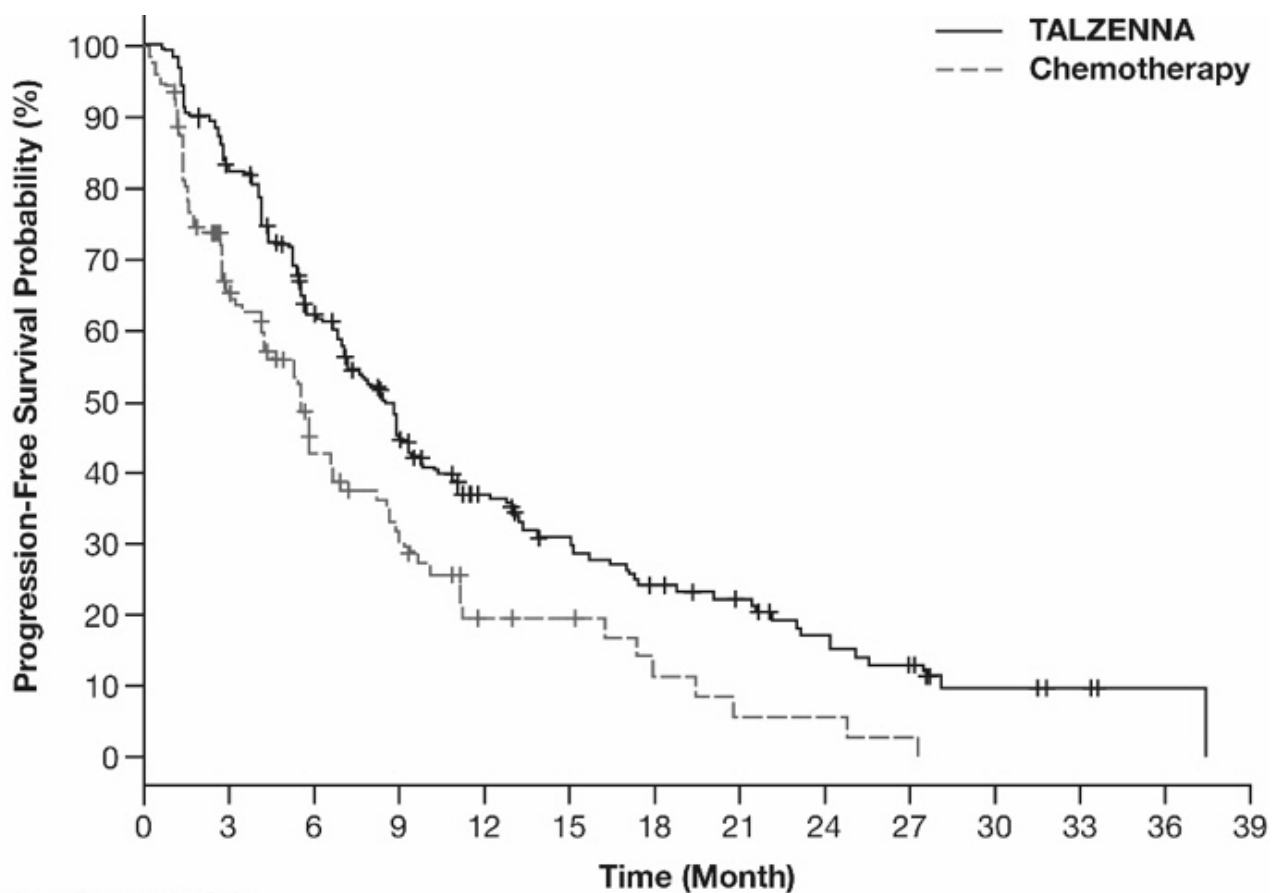
† p-values (2-sided) from the log-rank test stratified by number of prior cytotoxic chemotherapy regimens, triple-negative status and history of central nervous system metastasis.

‡ Conducted in ITT population with measurable disease at baseline.

§ Response rate based on confirmed responses.

¶ Median estimated from Kaplan-Meier probabilities.

## Figure 1. Kaplan-Meier Curves of PFS - EMBRACA Study

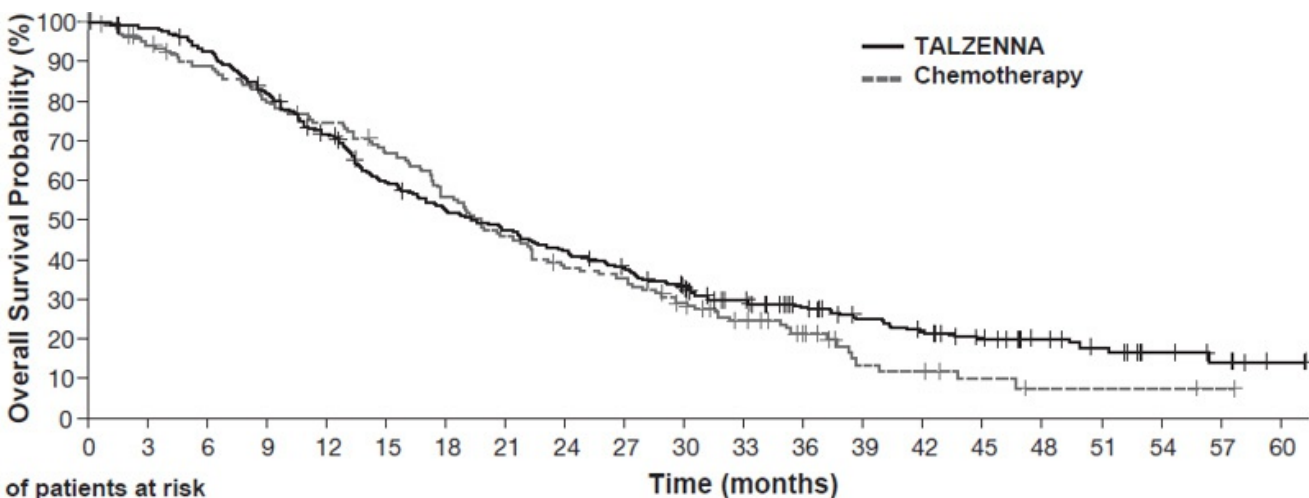


Number of patients at risk

<b>TALZENNA</b>	287	229	148	91	55	42	29	23	16	12	5	3	1
<b>Chemotherapy</b>	144	68	34	22	9	8	4	2	2	1			

Abbreviation: PFS=progression-free survival.

**Figure 2. Kaplan-Meier Curves of OS - EMBRACA Study (ITT Population)**



Number of patients at risk

<b>TALZENNA</b>	287	280	264	232	199	163	143	128	113	101	85	68	54	41	35	27	20	15	9	6	2
<b>Chemotherapy</b>	144	125	116	105	96	86	71	58	48	44	34	25	18	8	7	4	2	2	2	1	0

Abbreviations: ITT=intent-to-treat; OS=overall survival.

## 14.2 HRR Gene-mutated mCRPC

The efficacy of TALZENNA with enzalutamide was evaluated in TALAPRO-2

(NCT03395197), a randomized, double-blind, placebo-controlled, multi-cohort trial in which 399 patients with HRR gene-mutated (HRRm) mCRPC were randomized 1:1 to receive enzalutamide 160 mg daily plus either TALZENNA 0.5 mg or placebo daily until unacceptable toxicity or disease progression. Mutation status of HRR genes was determined prospectively using solid tumor tissue or circulating tumor DNA (ctDNA)-based next generation sequencing assays. Patients were required to have a mutation in at least one of 12 genes involved directly or indirectly in the HRR pathway (*ATM*, *ATR*, *BRCA1*, *BRCA2*, *CDK12*, *CHEK2*, *FANCA*, *MLH1*, *MRE11A*, *NBN*, *PALB2*, or *RAD51C*). All patients received a GnRH analog or had prior bilateral orchiectomy and needed to have progressed on prior androgen deprivation therapy. Prior treatment with a CYP17 inhibitor or docetaxel for metastatic castration-sensitive prostate cancer (mCSPC) was permitted. Randomization was stratified by previous treatment with a CYP17 inhibitor or docetaxel (yes/no).

The median age was 70 years (range: 41 to 90); 100% were male; 68% were White, 21% Asian, 2.8% Black, 0.8% Other, 7% unknown/not reported; 12% were Hispanic/Latino; and baseline ECOG performance status was 0 (62%) or 1 (38%). Thirty-nine percent of patients had bone-only disease; 15% had visceral disease. In the mCSPC setting, 29% percent of patients had received docetaxel and 9% had received a prior CYP17 inhibitor. The most commonly mutated HRR genes (>5%), including co-occurring mutations, were: *BRCA2* (34%), *ATM* (22%), *CDK12* (19%), *CHEK2* (18%), and *BRCA1* (6%).

The major efficacy outcome measure was radiographic progression-free survival (rPFS) evaluated according to RECIST, version 1.1 and Prostate Cancer Working Group (PCWG3) (bone) criteria, assessed by BICR. An additional efficacy outcome measure was OS.

A statistically significant improvement in rPFS and OS were demonstrated in patients randomized to TALZENNA with enzalutamide compared with placebo with enzalutamide. Efficacy results are presented in Table 10, and Figures 3 and 4.

**Table 10. Efficacy Results - TALAPRO-2 (HRR Gene-mutated mCRPC)**

	TALZENNA with Enzalutamide N=200	Placebo with Enzalutamide N=199
Radiographic Progression-free Survival (rPFS) by BICR		
Number of events, n (%)	66 (33)	104 (52)
Median months (95% CI)	NR (21.9, NR)	13.8 (11.0, 16.7)
Hazard ratio (95% CI)*	0.45 (0.33, 0.61)	
p-value†	p<0.0001	
Overall Survival (OS)		
Deaths, n (%)	93 (47)	126 (63)
Median months (95% CI)	45.1 (35.4, NR)	31.1 (27.3, 35.4)
Hazard ratio (95% CI)*	0.62 (0.48, 0.81)	
p-value†	p=0.0005	

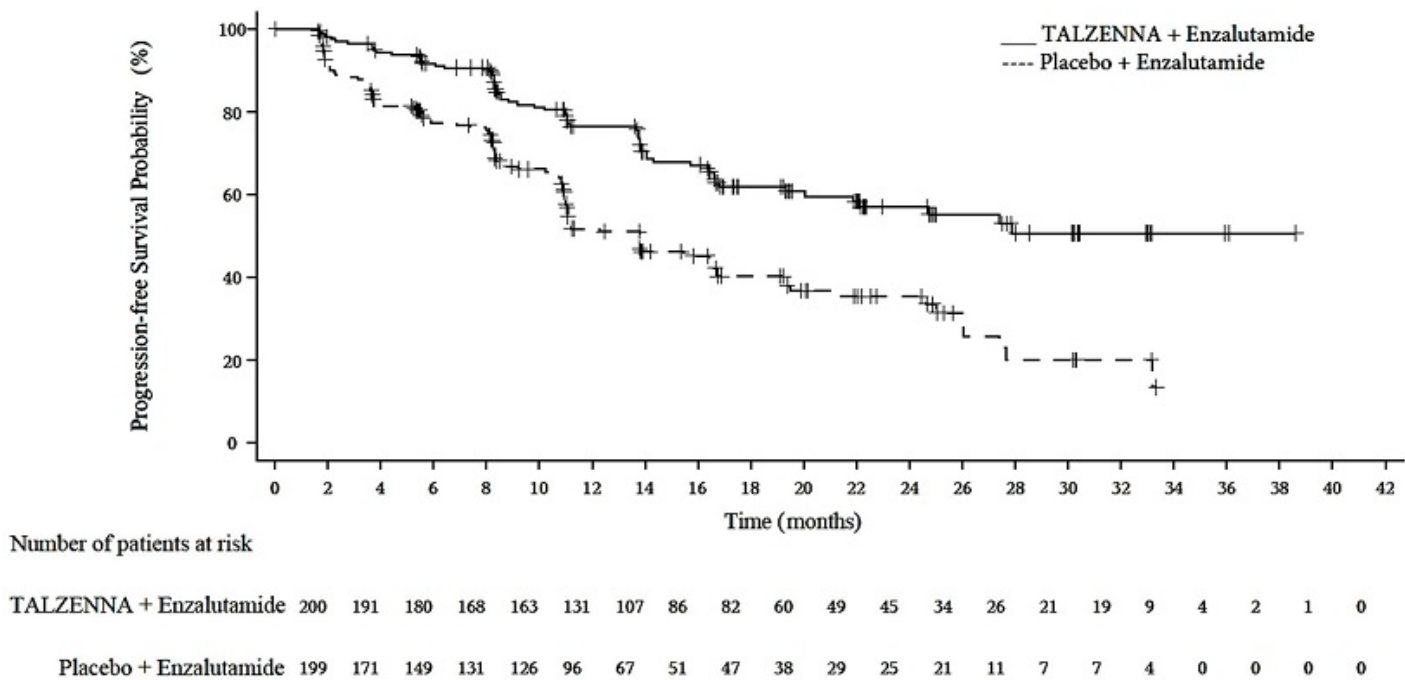
Abbreviations: BICR=blinded independent central review; CI=confidence interval; CSPC=castration-sensitive prostate cancer; HRR=homologous recombination repair; mCRPC=metastatic castration-resistant prostate cancer; N=number of patients;

NR=not reached.

\* Hazard ratio and CI are based on Cox PH model stratified by previous treatment for CSPC.

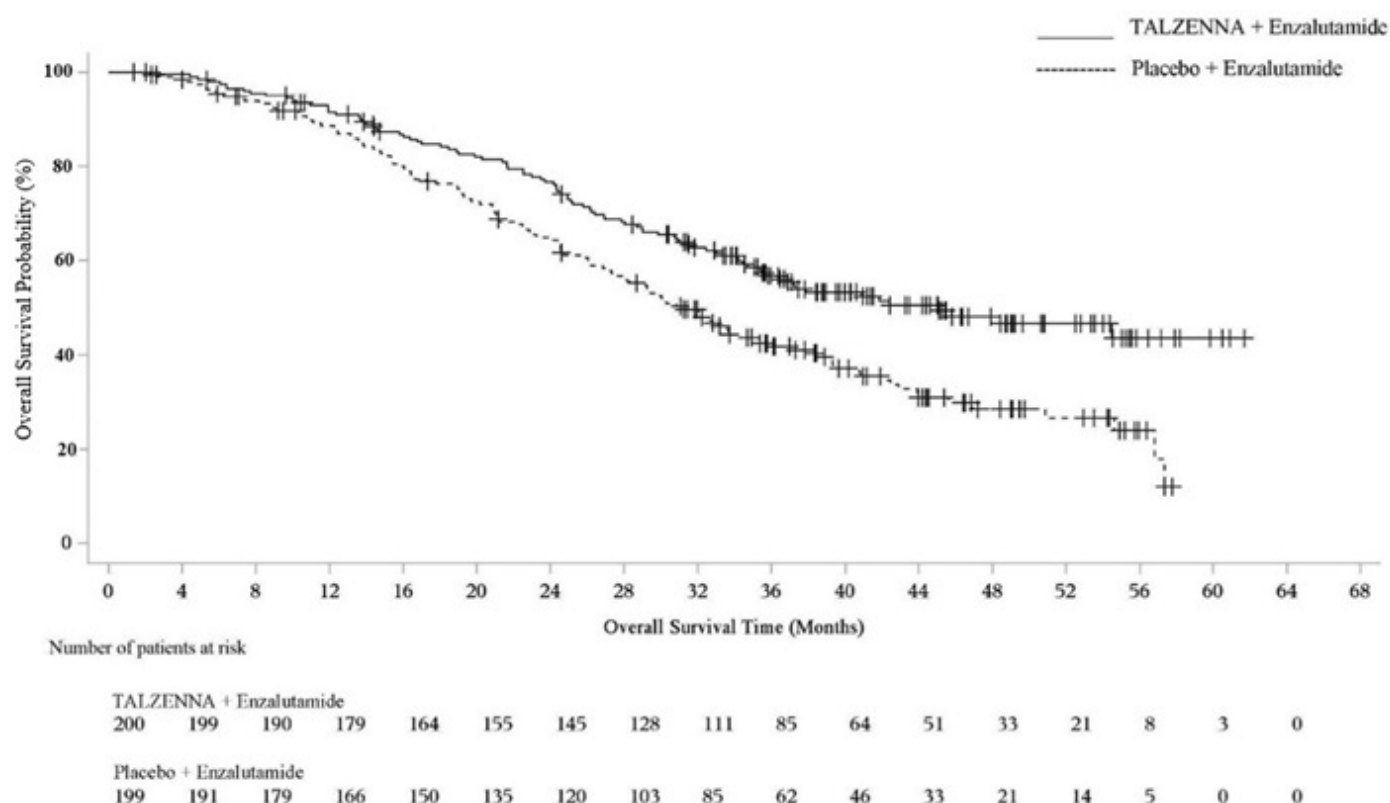
† p-value (2-sided) is based on log-rank test stratified by previous treatment for CSPC.

**Figure 3. Kaplan-Meier Curves of rPFS - TALAPRO-2 (HRR Gene-mutated mCRPC)**



Abbreviations: HRR=homologous recombination repair; mCRPC=metastatic castration-resistant prostate cancer; rPFS=radiographic progression-free survival.

**Figure 4. Kaplan-Meier Curves of OS - TALAPRO-2 (HRR Gene-mutated mCRPC)**



Abbreviations: HRR=homologous recombination repair; mCRPC=metastatic castration-resistant prostate cancer; OS=overall survival.

Exploratory subgroup analyses of rPFS and OS for patients with *BRCA*-mutated (*BRCAm*) and non-*BRCAm* HRRm are presented in Table 11.

**Table 11. Exploratory rPFS and OS Subgroup Analyses by *BRCAm* Status for TALAPRO-2 (HRR Gene-mutated mCRPC)**

	<i>BRC</i> Am		Non- <i>BRC</i> Am HRRm*	
	TALZENNA with Enzalutamide N=71	Placebo with Enzalutamide N=84	TALZENNA with Enzalutamide N=129	Placebo with Enzalutamide N=115
<b>rPFS</b>				
Number of events, n (%)	15 (21)	54 (64)	51 (40)	50 (43)
Median months (95% CI)	NR (NR, NR)	11.0 (8.3, 11.1)	24.7 (16.4, NR)	16.7 (13.8, 27.7)
Hazard ratio (95% CI)	0.20 (0.11, 0.36)		0.74 (0.50, 1.09)	
<b>Overall Survival (OS)</b>				
Deaths, n (%)	30 (42)	56 (67)	63 (49)	70 (61)
Median months (95% CI)	NR (35.4, NR)	28.5 (24.5, 34.4)	42.4 (34.2, NR)	32.6 (28.0, 42.2)
Hazard ratio (95% CI) <sup>†</sup>	0.48 (0.31, 0.75)		0.71 (0.51, 1.00)	

Abbreviations: *BRCAm*=breast cancer susceptibility gene-mutated; CI=confidence interval; CSPC=castration-sensitive prostate cancer; HRRm=homologous recombination



repair gene-mutated; NR=not reached; rPFS=radiographic progression-free survival.

\* Includes 4 patients who were incorrectly randomized in the HRRm stratum who did not have HRR gene mutations.

† Hazard ratio and CI are based on Cox PH model unstratified by previous treatment for CSPC.

## 16 HOW SUPPLIED/STORAGE AND HANDLING

TALZENNA is supplied in strengths and package configurations as described in Table 12:

**Table 12. TALZENNA Capsules**

<b>Package Configuration</b>	<b>Capsule Strength (mg)</b>	<b>NDC</b>	<b>Print</b>
Bottles of 30 capsules	0.1	NDC 0069-1031-30	White cap (printed with “Pfizer” in black) and a white body (printed with “TLZ 0.1” in black).
Bottles of 30 capsules	0.25	NDC 0069-0296-30	Ivory cap (printed with “Pfizer” in black) and a white body (printed with “TLZ 0.25” in black).
Bottles of 30 capsules	0.35	NDC 0069-1235-30	Ivory cap (printed with “Pfizer” in black) and an ivory body (printed with “TLZ 0.35” in black).
Bottles of 30 capsules	0.5	NDC 0069-1501-30	Light pink cap (printed with “Pfizer” in black) and a white body (printed with “TLZ 0.5” in black).
Bottles of 30 capsules	0.75	NDC 0069-1751-30	Light orange cap (printed with “Pfizer” in black) and a white body (printed with “TLZ 0.75” in black).
Bottles of 30 capsules	1	NDC 0069-1195-30	Light red cap (printed with “Pfizer” in black) and a white body (printed with “TLZ 1” in black).

### Storage

Store at 20°C to 25°C (68°F to 77°F); excursions permitted between 15°C to 30°C (59°F to 86°F). [See USP Controlled Room Temperature].

## 17 PATIENT COUNSELING INFORMATION

Advise the patient to read the FDA-approved patient labeling (Patient Information).

- MDS/AML: Advise patients to contact their healthcare provider if they experience weakness, feeling tired, fever, weight loss, frequent infections, bruising, bleeding easily, breathlessness, blood in urine or stool, and/or laboratory findings of low blood cell counts, or a need for blood transfusions. This may be a sign of hematological toxicity or a more serious uncommon bone marrow problem called MDS or AML, which have been reported in patients who received PARP inhibitors [see *Warnings and Precautions* (5.1)].
- Myelosuppression: Advise patients that TALZENNA may affect hematopoiesis and can cause anemia, leukopenia/neutropenia, and/or thrombocytopenia [see *Warnings and Precautions* (5.2)].
- Administration Instructions: Advise patients that TALZENNA can be taken once daily with or without food. Instruct patients that if they miss a dose of TALZENNA, they should take their next normal dose at the usual time. Also advise patients to swallow each capsule whole, and that capsules must not be opened or dissolved [see *Dosage and Administration* (2.4)].
- Embryo-Fetal Toxicity: Advise females to inform their healthcare provider if they are pregnant or become pregnant. Inform female patients of the risk to a fetus and potential loss of the pregnancy [see *Use in Specific Populations* (8.1)]. Advise females of reproductive potential to use effective contraception during treatment with TALZENNA and for 7 months after the last dose. Advise male patients with female partners of reproductive potential or who are pregnant to use effective contraception during treatment and for 4 months after receiving the last dose of TALZENNA [see *Warnings and Precautions* (5.3), *Use in Specific Populations* (8.1, 8.3)].
- Lactation: Advise patients not to breastfeed while taking TALZENNA and for 1 month after receiving the last dose [see *Use in Specific Populations* (8.2)].

This product's labeling may have been updated. For the most recent prescribing information, please visit <http://www.pfizer.com>.



Distributed by  
**Pfizer Labs**  
Division of Pfizer Inc.  
New York, NY 10001

LAB-1271-9.0

**PATIENT INFORMATION**  
**TALZENNA® (Tal-ZEN-ah)**  
**(talazoparib)**  
**capsules**

**What is the most important information I should know about TALZENNA?**  
**TALZENNA may cause serious side effects, including:**

- **Bone marrow problems called Myelodysplastic Syndrome (MDS) or Acute Myeloid Leukemia (AML).** Some people who have cancer and who have received previous treatment with chemotherapy or certain other medicines for their cancer have developed MDS or AML during or after treatment with TALZENNA. MDS or AML may lead to death. If you develop MDS or AML, your healthcare provider will stop treatment with TALZENNA.

Symptoms of low blood cell counts are common during treatment with TALZENNA, but can be a sign of serious problems, including MDS or AML. Tell your healthcare provider if you have any of the following symptoms during treatment with TALZENNA:

- |   |  |
|---|--|
| <input type="radio"/> weakness            | <input type="radio"/> blood in urine or stool          |
| <input type="radio"/> weight loss         | <input type="radio"/> shortness of breath              |
| <input type="radio"/> fever               | <input type="radio"/> feeling very tired               |
| <input type="radio"/> frequent infections | <input type="radio"/> bruising or bleeding more easily |

Your healthcare provider will do blood tests to check your blood cell counts:

- ☐ every month during treatment with TALZENNA.
- ☐ weekly if you have low blood cell counts that last a long time.

Your healthcare provider may change your dose, temporarily stop, or permanently stop treatment with TALZENNA if you get certain side effects.

**See “What are the possible side effects of TALZENNA?” below for other side effects of TALZENNA.**

**What is TALZENNA?**

TALZENNA is a prescription medicine used:

- alone to treat adults with human epidermal growth factor receptor 2 (HER2)-negative breast cancer:
  - o who have a certain type of an abnormal inherited *BRCA* gene, **and**
  - o whose cancer has spread to other parts of the body (locally advanced or metastatic).

Your healthcare provider will perform a test to make sure that TALZENNA is right for you.

- in combination with a medicine called enzalutamide, to treat adults with prostate cancer
  - o with certain abnormal inherited or acquired genes called homologous recombination repair (HRR genes) **and**
  - o which no longer responds to hormone therapy or surgical treatment to lower testosterone and has spread to other parts of the body (metastatic).

Your healthcare provider will perform a test to make sure that TALZENNA is right for you.

It is not known if TALZENNA is safe and effective in children.

**Before taking TALZENNA, tell your healthcare provider about all of your medical conditions, including if you:**

- have kidney problems.
- are pregnant or plan to become pregnant. TALZENNA can harm your unborn baby and may cause loss of pregnancy (miscarriage). You should not become pregnant during treatment with TALZENNA.

**Females who are able to become pregnant:**

- o Your healthcare provider may do a pregnancy test before you start treatment with TALZENNA.
- o You should use effective birth control (contraception) during treatment with TALZENNA and for 7 months after the last dose of TALZENNA. Talk to your healthcare provider about forms of birth control that may be right for you.
- o Tell your healthcare provider right away if you are pregnant or think you are pregnant during treatment with TALZENNA.

**Males with female partners who are pregnant or are able to become pregnant:**

- o You should use effective birth control during treatment with TALZENNA and for 4 months after the last dose of TALZENNA.
- are breastfeeding or plan to breastfeed. It is not known if TALZENNA passes into your breast milk. Do not breastfeed during treatment with TALZENNA and for 1 month after the last dose of TALZENNA. Talk to your healthcare provider about the best way to feed your baby during this time.

**Tell your healthcare provider about all the medicines you take**, including prescription and over-the-counter medicines, vitamins, and herbal supplements. Taking TALZENNA with certain other medicines can affect how TALZENNA works and may cause side effects.

Know the medicines you take. Keep a list of your medicines and show it to your healthcare provider and pharmacist when you get a new medicine.

**How should I take TALZENNA?**

- Take TALZENNA exactly as your healthcare provider tells you.
- Do not change your dose or stop taking TALZENNA without first talking with your healthcare provider.
- If you are prescribed TALZENNA for breast cancer, take TALZENNA 1 time a day.
- If you are prescribed TALZENNA for prostate cancer:
  - o Take TALZENNA with enzalutamide 1 time a day.
  - o You should start or continue a gonadotropin-releasing hormone (GnRH) analog therapy during your treatment with TALZENNA and enzalutamide unless you have had a surgery to lower the amount of testosterone in your body (surgical castration).
- Take TALZENNA with or without food.
- Swallow TALZENNA capsules whole. Do not dissolve or open TALZENNA capsules.
- If you vomit or miss a dose of TALZENNA, take your next dose at your regular time. Do not take an extra dose to make up for a missed dose.

**What are the possible side effects of TALZENNA?**

**TALZENNA may cause serious side effects, including:**

- **See “What is the most important information I should know about TALZENNA?”**

**The most common side effects of TALZENNA when taken alone include:**

- |                                     |                                  |
|-------------------------------------|----------------------------------|
| • decreased red blood cell counts   | • headache                       |
| • decreased white blood cell counts | • decreased blood calcium levels |
| • tiredness or weakness             | • vomiting                       |
| • decreased platelet counts         | • hair loss                      |
| • increased blood sugar levels      | • diarrhea                       |
| • increased liver function tests    | • decreased appetite             |
| • nausea                            |                                  |

**The most common side effects of TALZENNA when taken in combination with enzalutamide include:**

- |                                     |                                    |
|-------------------------------------|------------------------------------|
| • decreased red blood cell counts   | • decreased phosphate in the blood |
| • decreased white blood cell counts | • bone injuries                    |
| • tiredness or weakness             | • decreased magnesium in the blood |
| • decreased platelet counts         | • dizziness                        |
| • decreased calcium in the blood    | • increased bilirubin in the blood |
| • nausea                            | • decreased potassium in the blood |
| • decreased appetite                | • changes in your sense of taste   |
| • decreased sodium in the blood     |                                    |

TALZENNA may cause fertility problems in males. This may affect your ability to father a child. Talk to your healthcare provider if this is a concern for you.

These are not all of the possible side effects of TALZENNA.

Call your doctor for medical advice about side effects. You may report side effects to FDA at 1-800-FDA-1088.

**How should I store TALZENNA?**

- Store TALZENNA at 68°F to 77°F (20°C to 25°C).

**Keep TALZENNA and all medicines out of the reach of children.**

**General information about the safe and effective use of TALZENNA.**

Medicines are sometimes prescribed for purposes other than those listed in a Patient Information leaflet. Do not use TALZENNA for a condition for which it is not prescribed. Do not give TALZENNA to other people, even if they have the same symptoms that you have. It may harm them. You can ask your healthcare provider or pharmacist for information about TALZENNA that is written for health professionals.

**What are the ingredients in TALZENNA?**

**Active ingredient:** talazoparib tosylate

**Inactive ingredients:** silicified microcrystalline cellulose (sMCC). The capsule shells contain hypromellose (HPMC), yellow iron oxide, red iron oxide and titanium dioxide. The printing ink contains shellac, black iron oxide, potassium hydroxide, ammonium hydroxide, and propylene glycol.






Distributed by  
**Pfizer Labs**  
Division of Pfizer Inc.  
New York, NY 10001

For more information, go to [www.pfizer.com](http://www.pfizer.com) or call 1-800-438-1985.  
LAB-1272-6.0

This Patient Information has been approved by the U.S. Food and Drug Administration. Revised: 6/2025

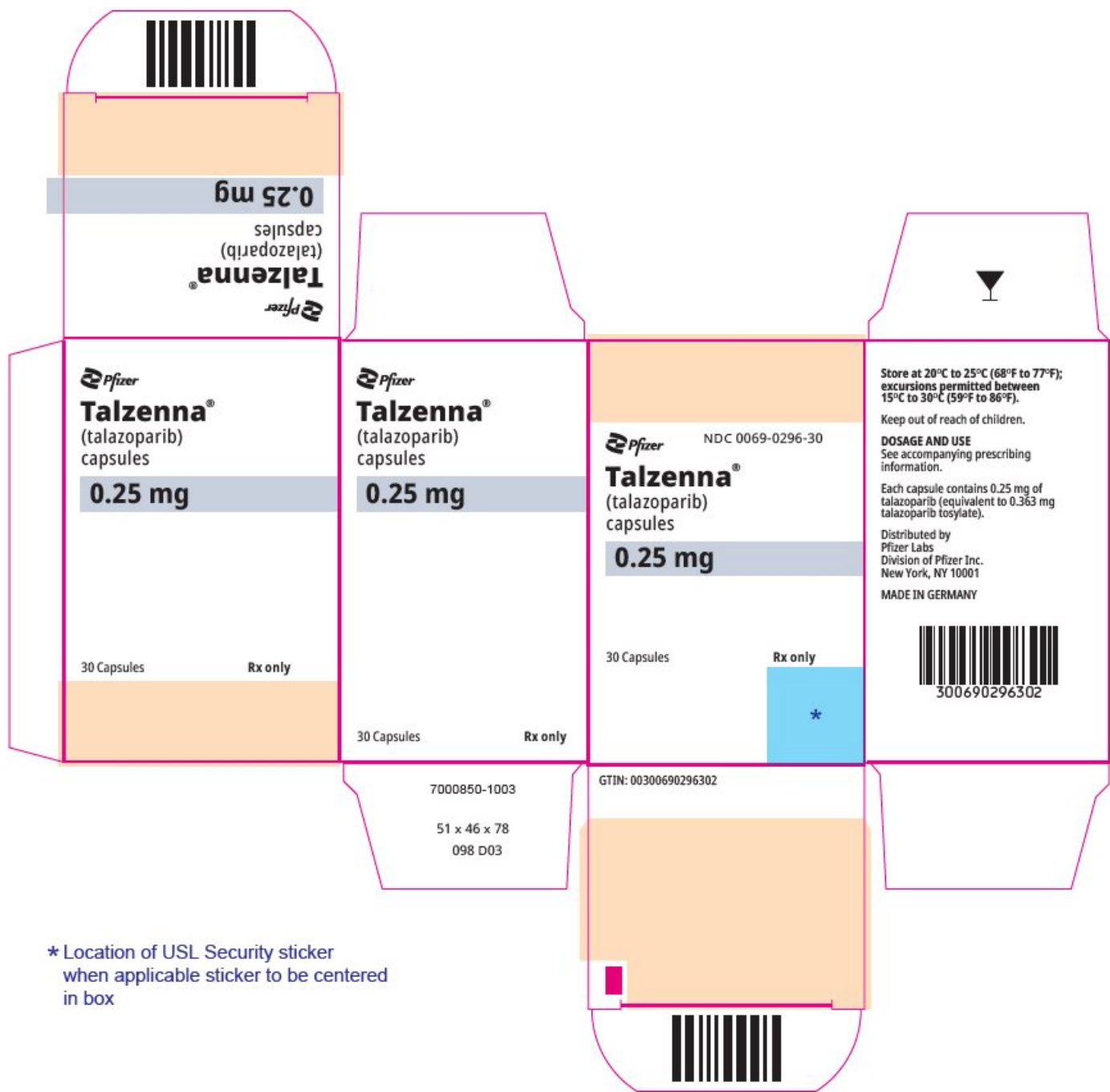
## PRINCIPAL DISPLAY PANEL - 0.25 mg Capsule Bottle Label

Pfizer  
NDC 0069-0296-30  
  
Talzena®  
(talazoparib) capsules  
  
0.25 mg  
  
30 Capsules  
Rx only

<p>Store at 20°C to 25°C (68°F to 77°F); excursions permitted between 15°C to 30°C (59°F to 86°F). Keep out of reach of children. <b>DOSAGE AND USE</b> See accompanying prescribing information. Each capsule contains 0.25 mg of talazoparib (equivalent to 0.363 mg talazoparib tosylate). Distributed by Pfizer Labs Division of Pfizer Inc., NY, NY 10001 7000851-1003</p>	<p> <b>Talzena®</b> (talazoparib) capsules <b>0.25 mg</b></p>	<p>NDC 0069-0296-30</p>  <p>(01)10300690296309</p>	<p>LOT: EXP:</p>	<p>Print free and varnish free (variable data)</p>
	<p>30 Capsules</p>	<p>Rx only</p>		

## PRINCIPAL DISPLAY PANEL - 0.25 mg Capsule Bottle Carton

Pfizer  
NDC 0069-0296-30  
  
Talzena®  
(talazoparib)  
capsules  
  
0.25 mg  
  
30 Capsules  
Rx only



\* Location of USL Security sticker  
when applicable sticker to be centered  
in box

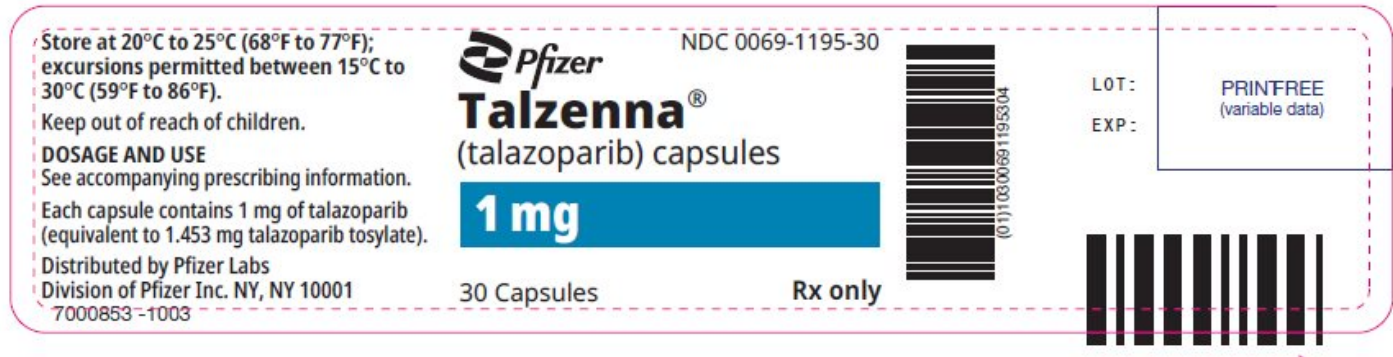
## PRINCIPAL DISPLAY PANEL - 1 mg Capsule Bottle Label

Pfizer  
NDC 0069-1195-30

Talzenna®  
(talazoparib) capsules

1 mg

30 Capsules  
Rx only



**PRINCIPAL DISPLAY PANEL - 1 mg Capsule Bottle Carton**

Pfizer  
NDC 0069-1195-30

Talzenna®  
(talazoparib)  
capsules

1 mg

30 Capsules  
Rx only





## PRINCIPAL DISPLAY PANEL - 0.5 mg Capsule Bottle Label

Pfizer  
NDC 0069-1501-30

Talzenna®  
(talazoparib) capsules

0.5 mg

30 Capsules  
Rx only

Store at 20°C to 25°C (68°F to 77°F);  
excursions permitted between 15°C to  
30°C (59°F to 86°F).

Keep out of reach of children.

**DOSAGE AND USE**

See accompanying prescribing information.

Each capsule contains 0.5 mg of talazoparib  
(equivalent to 0.727 mg talazoparib tosylate).

Distributed by Pfizer Labs  
Division of Pfizer Inc., NY, NY 10001  
7001662-1002



NDC 0069-1501-30

**Talzenna**<sup>®</sup>  
(talazoparib) capsules

**0.5 mg**

30 Capsules

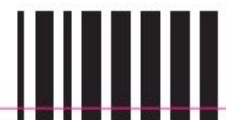
Rx only



LOT:

EXP:

Print free and  
varnish free  
(variable data)



**PRINCIPAL DISPLAY PANEL - 0.5 mg Capsule Bottle Carton**

Pfizer

NDC 0069-1501-30

Talzenna<sup>®</sup>  
(talazoparib)  
capsules

0.5 mg

30 Capsules

Rx only



## PRINCIPAL DISPLAY PANEL - 0.75 mg Capsule Bottle Label

Pfizer

NDC 0069-1751-30

Talzenna®  
(talazoparib) capsules

0.75 mg

30 Capsules

Rx only

Store at 20°C to 25°C (68°F to 77°F);  
excursions permitted between 15°C to  
30°C (59°F to 86°F).

Keep out of reach of children.

**DOSAGE AND USE**

See accompanying prescribing information.

Each capsule contains 0.75 mg talazoparib  
(equivalent to 1.09 mg talazoparib tosylate).

Distributed by Pfizer Labs  
Division of Pfizer Inc., NY, NY 10001  
7001664-1002



NDC 0069-1751-30

**Talzenna**<sup>®</sup>  
(talazoparib) capsules

**0.75 mg**

30 Capsules

Rx only



LOT:

EXP:

Print free and  
varnish free  
(variable data)



**PRINCIPAL DISPLAY PANEL - 0.75 mg Capsule Bottle Carton**

Pfizer

NDC 0069-1751-30

Talzenna<sup>®</sup>  
(talazoparib)  
capsules

0.75 mg

30 Capsules

Rx only



## PRINCIPAL DISPLAY PANEL - 0.1 mg Capsule Bottle Label

Pfizer  
NDC 0069-1031-30

Talzenna®  
(talazoparib) capsules

0.1 mg

30 Capsules  
Rx only

Store at 20°C to 25°C (68°F to 77°F);  
excursions permitted between 15°C to  
30°C (59°F to 86°F).

Keep out of reach of children.

**DOSAGE AND USE**

See accompanying prescribing information.

Each capsule contains 0.1 mg of talazoparib  
(equivalent to 0.145 mg talazoparib tosylate).

Distributed by Pfizer Labs

Division of Pfizer Inc., New York, NY 10001  
7001879 -1002



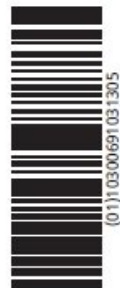
NDC 0069-1031-30

**Talzenna**<sup>®</sup>  
(talazoparib) capsules

**0.1 mg**

30 Capsules

Rx only



LOT:

EXP:

PRINTFREE  
(variable data)



**PRINCIPAL DISPLAY PANEL - 0.1 mg Capsule Bottle Carton**

Pfizer

NDC 0069-1031-30

Talzenna<sup>®</sup>  
(talazoparib)  
capsules

0.1 mg

30 Capsules

Rx only



## PRINCIPAL DISPLAY PANEL - 0.35 mg Capsule Bottle Label

Pfizer  
NDC 0069-1235-30

Talzenna®  
(talazoparib) capsules

0.35 mg

30 Capsules  
Rx only

Store at 20°C to 25°C (68°F to 77°F);  
excursions permitted between 15°C to  
30°C (59°F to 86°F).

Keep out of reach of children.

**DOSAGE AND USE**

See accompanying prescribing information.

Each capsule contains 0.35 mg talazoparib  
(equivalent to 0.509 mg talazoparib tosylate).

Distributed by Pfizer Labs

Division of Pfizer Inc., New York, NY 10001  
7001881-1002



NDC 0069-1235-30

**Talzenna**<sup>®</sup>  
(talazoparib) capsules

**0.35 mg**

30 Capsules

Rx only



(011)0300691235307

LOT:

EXP:

PRINTFREE  
(variable data)



**PRINCIPAL DISPLAY PANEL - 0.35 mg Capsule Bottle Carton**

Pfizer

NDC 0069-1235-30

Talzenna<sup>®</sup>  
(talazoparib)  
capsules

0.35 mg

30 Capsules

Rx only





## TALZENNA

talazoparib capsule

### Product Information

Product Type	HUMAN PRESCRIPTION DRUG	Item Code (Source)	NDC:0069-0296
Route of Administration	ORAL		

### Active Ingredient/Active Moiety

Ingredient Name	Basis of Strength	Strength
TALAZOPARIB TOSYLATE (UNII: 02WK9U5NZC) (TALAZOPARIB - UNII: 9QHX048FRV)	TALAZOPARIB	0.25 mg

## Inactive Ingredients

Ingredient Name	Strength
<b>MICROCRYSTALLINE CELLULOSE</b> (UNII: OP1R32D61U)	
<b>HYPROMELLOSE, UNSPECIFIED</b> (UNII: 3NXW29V3WO)	
<b>FERRIC OXIDE YELLOW</b> (UNII: EX438O2MRT)	
<b>FERRIC OXIDE RED</b> (UNII: 1K09F3G675)	
<b>TITANIUM DIOXIDE</b> (UNII: 15FIX9V2JP)	
<b>SHELLAC</b> (UNII: 46N107B71O)	
<b>FERROSFERRIC OXIDE</b> (UNII: XM0M87F357)	
<b>POTASSIUM HYDROXIDE</b> (UNII: WZH3C48M4T)	
<b>AMMONIA</b> (UNII: 5138Q19F1X)	
<b>PROPYLENE GLYCOL, (R)-</b> (UNII: 602HN5L69H)	

## Product Characteristics

<b>Color</b>	WHITE (ivory cap)	<b>Score</b>	no score
<b>Shape</b>	CAPSULE	<b>Size</b>	14mm
<b>Flavor</b>		<b>Imprint Code</b>	Pfizer;TLZ;025
<b>Contains</b>			

## Packaging

#	Item Code	Package Description	Marketing Start Date	Marketing End Date
1	NDC:0069-0296-30	1 in 1 CARTON	10/26/2018	01/31/2027
1		30 in 1 BOTTLE; Type 0: Not a Combination Product		

## Marketing Information

Marketing Category	Application Number or Monograph Citation	Marketing Start Date	Marketing End Date
NDA	NDA211651	10/26/2018	01/31/2027

## TALZENNA

talazoparib capsule

### Product Information

<b>Product Type</b>	HUMAN PRESCRIPTION DRUG	<b>Item Code (Source)</b>	NDC:0069-1195
<b>Route of Administration</b>	ORAL		

### Active Ingredient/Active Moiety

Ingredient Name	Basis of Strength	Strength
TALAZOPARIB TOSYLATE (UNII: 02WK9U5NZC) (TALAZOPARIB - UNII:9QHX048FRV)	TALAZOPARIB	1 mg

Inactive Ingredients

Ingredient Name	Strength
MICROCRYSTALLINE CELLULOSE (UNII: OP1R32D61U)	
HYPROMELLOSE, UNSPECIFIED (UNII: 3NXW29V3WO)	
FERRIC OXIDE YELLOW (UNII: EX438O2MRT)	
FERRIC OXIDE RED (UNII: 1K09F3G675)	
TITANIUM DIOXIDE (UNII: 15FIX9V2JP)	
SHELLAC (UNII: 46N107B71O)	
FERROSO FERRIC OXIDE (UNII: XM0M87F357)	
POTASSIUM HYDROXIDE (UNII: WZH3C48M4T)	
AMMONIA (UNII: 5138Q19F1X)	
PROPYLENE GLYCOL, (R)- (UNII: 602HN5L69H)	

Product Characteristics

Color	RED (light red cap) , WHITE (white body)	Score	no score
Shape	CAPSULE	Size	14mm
Flavor		Imprint Code	Pfizer;TLZ;1
Contains			

Packaging

#	Item Code	Package Description	Marketing Start Date	Marketing End Date
1	NDC:0069-1195-30	1 in 1 CARTON	10/26/2018	08/31/2027
1		30 in 1 BOTTLE; Type 0: Not a Combination Product		

Marketing Information

Marketing Category	Application Number or Monograph Citation	Marketing Start Date	Marketing End Date
NDA	NDA211651	10/26/2018	08/31/2027

TALZENNA

talazoparib capsule

Product Information

Product Type	HUMAN PRESCRIPTION DRUG	Item Code (Source)	NDC:0069-1501
Route of Administration	ORAL		

Active Ingredient/Active Moiety				
Ingredient Name		Basis of Strength	Strength	
TALAZOPARIB TOSYLATE (UNII: 02WK9U5NZC) (TALAZOPARIB - UNII:9QHX048FRV)		TALAZOPARIB	0.5 mg	
Inactive Ingredients				
Ingredient Name			Strength	
MICROCRYSTALLINE CELLULOSE (UNII: OP1R32D61U)				
HYPROMELLOSE, UNSPECIFIED (UNII: 3NXW29V3WO)				
FERRIC OXIDE YELLOW (UNII: EX438O2MRT)				
FERRIC OXIDE RED (UNII: 1K09F3G675)				
TITANIUM DIOXIDE (UNII: 15FIX9V2JP)				
SHELLAC (UNII: 46N107B71O)				
FERROSOFERRIC OXIDE (UNII: XM0M87F357)				
POTASSIUM HYDROXIDE (UNII: WZH3C48M4T)				
AMMONIA (UNII: 5138Q19F1X)				
PROPYLENE GLYCOL, (R)- (UNII: 602HN5L69H)				
Product Characteristics				
Color	PINK (light pink cap) , WHITE (white body)	Score	no score	
Shape	CAPSULE	Size	14mm	
Flavor		Imprint Code	Pfizer;TLZ;05	
Contains				
Packaging				
#	Item Code	Package Description	Marketing Start Date	Marketing End Date
1	NDC:0069-1501-30	1 in 1 CARTON	01/31/2022	03/31/2027
1		30 in 1 BOTTLE; Type 0: Not a Combination Product		
Marketing Information				
Marketing Category		Application Number or Monograph Citation	Marketing Start Date	Marketing End Date
NDA		NDA211651	01/31/2022	03/31/2027

TALZENNA			
talazoparib capsule			
Product Information			
Product Type	HUMAN PRESCRIPTION DRUG	Item Code (Source)	NDC:0069-1751

Route of Administration		ORAL		
Active Ingredient/Active Moiety				
Ingredient Name		Basis of Strength	Strength	
TALAZOPARIB TOSYLATE (UNII: 02WK9U5NZC) (TALAZOPARIB - UNII:9QHX048FRV)		TALAZOPARIB	0.75 mg	
Inactive Ingredients				
Ingredient Name		Strength		
MICROCRYSTALLINE CELLULOSE (UNII: OP1R32D61U)				
HYPROMELLOSE, UNSPECIFIED (UNII: 3NXW29V3WO)				
FERRIC OXIDE YELLOW (UNII: EX438O2MRT)				
FERRIC OXIDE RED (UNII: 1K09F3G675)				
TITANIUM DIOXIDE (UNII: 15FIX9V2JP)				
SHELLAC (UNII: 46N107B71O)				
FERROSOFERRIC OXIDE (UNII: XM0M87F357)				
POTASSIUM HYDROXIDE (UNII: WZH3C48M4T)				
AMMONIA (UNII: 5138Q19F1X)				
PROPYLENE GLYCOL, (R)- (UNII: 602HN5L69H)				
Product Characteristics				
Color	ORANGE (light orange cap) , WHITE (white body)	Score	no score	
Shape	CAPSULE	Size	14mm	
Flavor		Imprint Code	Pfizer;TLZ;075	
Contains				
Packaging				
#	Item Code	Package Description	Marketing Start Date	Marketing End Date
1	NDC:0069-1751-30	1 in 1 CARTON	01/31/2022	11/30/2025
1		30 in 1 BOTTLE; Type 0: Not a Combination Product		
Marketing Information				
Marketing Category		Application Number or Monograph Citation	Marketing Start Date	Marketing End Date
NDA		NDA211651	01/31/2022	11/30/2025

## TALZENNA

talazoparib capsule

Product Information			
Product Type	HUMAN PRESCRIPTION DRUG	Item Code (Source)	NDC:0069-1031
Route of Administration	ORAL		

Active Ingredient/Active Moiety		
Ingredient Name		Basis of Strength Strength
TALAZOPARIB TOSYLATE (UNII: 02WK9U5NZC) (TALAZOPARIB - UNII:9QHX048FRV)		TALAZOPARIB 0.1 mg

Inactive Ingredients	
Ingredient Name	Strength
MICROCRYSTALLINE CELLULOSE (UNII: OP1R32D61U)	
HYPROMELLOSE, UNSPECIFIED (UNII: 3NXW29V3WO)	
FERRIC OXIDE YELLOW (UNII: EX438O2MRT)	
FERRIC OXIDE RED (UNII: 1K09F3G675)	
TITANIUM DIOXIDE (UNII: 15FIX9V2JP)	
SHELLAC (UNII: 46N107B71O)	
FERROSOFERRIC OXIDE (UNII: XM0M87F357)	
POTASSIUM HYDROXIDE (UNII: WZH3C48M4T)	
AMMONIA (UNII: 5138Q19F1X)	
PROPYLENE GLYCOL, (R)- (UNII: 602HN5L69H)	

Product Characteristics			
Color	WHITE	Score	no score
Shape	CAPSULE	Size	14mm
Flavor		Imprint Code	Pfizer;TLZ;01
Contains			

Packaging				
#	Item Code	Package Description	Marketing Start Date	Marketing End Date
1	NDC:0069-1031-30	1 in 1 CARTON	06/21/2023	12/31/2025
1		30 in 1 BOTTLE; Type 0: Not a Combination Product		

Marketing Information			
Marketing Category	Application Number or Monograph Citation	Marketing Start Date	Marketing End Date
NDA	NDA211651	06/21/2023	12/31/2025

talazoparib capsule					
Product Information					
Product Type	HUMAN PRESCRIPTION DRUG	Item Code (Source)	NDC:0069-1235		
Route of Administration	ORAL				
Active Ingredient/Active Moiety					
Ingredient Name		Basis of Strength	Strength		
TALAZOPARIB TOSYLATE (UNII: 02WK9U5NZC) (TALAZOPARIB - UNII:9QHX048FRV)		TALAZOPARIB	0.35 mg		
Inactive Ingredients					
Ingredient Name			Strength		
MICROCRYSTALLINE CELLULOSE (UNII: OP1R32D61U)					
HYPROMELLOSE, UNSPECIFIED (UNII: 3NXW29V3WO)					
FERRIC OXIDE YELLOW (UNII: EX438O2MRT)					
FERRIC OXIDE RED (UNII: 1K09F3G675)					
TITANIUM DIOXIDE (UNII: 15FIX9V2JP)					
SHELLAC (UNII: 46N107B71O)					
FERROSOFERRIC OXIDE (UNII: XM0M87F357)					
POTASSIUM HYDROXIDE (UNII: WZH3C48M4T)					
AMMONIA (UNII: 5138Q19F1X)					
PROPYLENE GLYCOL, (R)- (UNII: 602HN5L69H)					
Product Characteristics					
Color	WHITE (Ivory)	Score	no score		
Shape	CAPSULE	Size	14mm		
Flavor		Imprint Code	Pfizer;TLZ;035		
Contains					
Packaging					
#	Item Code	Package Description	Marketing Start Date	Marketing End Date	
1	NDC:0069-1235-30	1 in 1 CARTON	06/21/2023	10/31/2025	
1		30 in 1 BOTTLE; Type 0: Not a Combination Product			
Marketing Information					
Marketing Category		Application Number or Monograph Citation	Marketing Start Date	Marketing End Date	
NDA		NDA211651	06/21/2023	10/31/2025	

**Labeler** - Pfizer Laboratories Div Pfizer Inc (134489525)

## Establishment

Name	Address	ID/FEI	Business Operations
Viartis Pharmaceuticals LLC		829084552	PACK(0069-0296, 0069-1195, 0069-1501, 0069-1751, 0069-1031, 0069-1235) , LABEL(0069-0296, 0069-1195, 0069-1501, 0069-1751, 0069-1031, 0069-1235)

## Establishment

Name	Address	ID/FEI	Business Operations
Pharmacia & Upjohn Company LLC		618054084	PACK(0069-0296, 0069-1195, 0069-1501, 0069-1751, 0069-1031, 0069-1235) , LABEL(0069-0296, 0069-1195, 0069-1501, 0069-1751, 0069-1031, 0069-1235)

Revised: 6/2025

Pfizer Laboratories Div Pfizer Inc