

INDOMETHACIN - indomethacin injection, powder, lyophilized, for solution

Fresenius Kabi USA, LLC

HIGHLIGHTS OF PRESCRIBING INFORMATION

These highlights do not include all the information needed to use Indomethacin for Injection safely and effectively. See full prescribing information for Indomethacin for Injection.

Indomethacin for Injection

Initial U.S. Approval: 1965

INDICATIONS AND USAGE

Indomethacin for Injection is a cardiovascular drug indicated:

- To close a hemodynamically significant patent ductus arteriosus in premature infants weighing between 500 and 1,750 g. (1)

DOSAGE AND ADMINISTRATION

- Dosage is dependent on the age of the infant at time of therapy. A course of therapy requires intravenous doses of Indomethacin for Injection given at 12 to 24 hour intervals.

AGE at 1st dose	DOSAGE (mg/kg)		
	1st	2nd	3rd
Less than 48 hours	0.2	0.1	0.1
2 to 7 days	0.2	0.2	0.2
Over 7 days	0.2	0.25	0.25

- If anuria or marked oliguria (urinary output <0.6 mL/kg/hr) is evident at the scheduled time of the second or third dose of Indomethacin for Injection, do not give additional doses until laboratory studies indicate that renal function has returned to normal
- If the ductus arteriosus closes or is significantly reduced in size after an interval of 48 hours or more from completion of the first course of Indomethacin for Injection, no further doses are necessary
- If the neonate remains unresponsive to therapy with Indomethacin for Injection after 2 courses, surgery may be necessary for closure of the ductus arteriosus. (2.1)

DOSAGE FORMS AND STRENGTHS

- Single dose vials of 1 mg indomethacin as a sterile, lyophilized powder or plug for reconstitution. (3)

CONTRAINDICATIONS

Indomethacin for Injection is contraindicated in neonates:

- With proven or suspected infection that is untreated
- Who are bleeding, especially those with active intracranial hemorrhage or gastrointestinal bleeding
- With thrombocytopenia or coagulation defects
- Suspected of having necrotizing enterocolitis
- With significant impairment of renal function
- With congenital heart disease in whom patency of the ductus arteriosus is necessary for satisfactory pulmonary or systemic blood flow. (4)

WARNINGS AND PRECAUTIONS

- Indomethacin may mask the usual signs of infection. (5.1)
- Monitor for signs of hepatic reactions. Indomethacin for Injection may need to be discontinued. (5.2)
- Indomethacin for Injection may inhibit platelet aggregation. (5.3)
- Gastrointestinal Effects: Monitor neonates for blood in stool. (5.4)
- Central Nervous System Effects: Monitor neonates for intraventricular hemorrhage. (5.5)

- Renal Effects: Monitor renal function and serum electrolytes. (5.6)

----- **ADVERSE REACTIONS** -----

Most common adverse reactions are bleeding problems, higher incidence of transient oliguria and elevations of serum creatinine. (6.1)

To report SUSPECTED ADVERSE REACTIONS, contact Fresenius Kabi USA, LLC at 1-800-551-7176 or FDA at 1-800-FDA-1088 or www.fda.gov/medwatch.

----- **DRUG INTERACTIONS** -----

- When used concomitantly with digoxin, monitor neonates for the development of digoxin toxicity. (7.1)
- Monitor prothrombin time when indomethacin is added to anticoagulants. (7.2)

Revised: 11/2016

FULL PRESCRIBING INFORMATION: CONTENTS*

1 INDICATIONS AND USAGE

2 DOSAGE AND ADMINISTRATION

2.1 Directions for Use

3 DOSAGE FORMS AND STRENGTHS

4 CONTRAINDICATIONS

5 WARNINGS AND PRECAUTIONS

5.1 Infection

5.2 Hepatic Reactions

5.3 Platelet Aggregation

5.4 Gastrointestinal Effects

5.5 Central Nervous System Effects

5.6 Renal Effects

5.7 Administration

6 ADVERSE REACTIONS

6.1 Clinical Trials Experience

7 DRUG INTERACTIONS

7.1 Digoxin

7.2 Anticoagulants

7.3 Furosemide

7.4 Aminoglycosides

7.5 Drugs that Act on the Renin-Angiotensin System

11 DESCRIPTION

12 CLINICAL PHARMACOLOGY

12.1 Mechanism of Action

12.2 Pharmacodynamics

12.3 Pharmacokinetics

13 NONCLINICAL TOXICOLOGY

16 HOW SUPPLIED/STORAGE AND HANDLING

16.1 How Supplied

16.2 Storage

* Sections or subsections omitted from the full prescribing information are not listed.

FULL PRESCRIBING INFORMATION

1 INDICATIONS AND USAGE

Indomethacin for Injection is indicated to close a hemodynamically significant patent ductus arteriosus in premature infants weighing between 500 and 1,750 g when 48 hours usual medical management (e.g., fluid restriction, diuretics, digitalis, respiratory support, etc.) is ineffective. Clear-cut clinical evidence of a hemodynamically significant patent ductus arteriosus should be present, such as respiratory distress, a continuous murmur, a hyperactive precordium, cardiomegaly, or pulmonary plethora on chest x-ray.

2 DOSAGE AND ADMINISTRATION

For intravenous administration only.

Dosage recommendations for closure of the ductus arteriosus depend on the age of the infant at the time of therapy. A course of therapy is defined as three intravenous doses of Indomethacin for Injection given at 12 to 24 hour intervals, with careful attention to urinary output. If anuria or marked oliguria (urinary output <0.6 mL/kg/hr) is evident at the scheduled time of the second or third dose of Indomethacin for Injection, do not give additional doses until laboratory studies indicate that renal function has returned to normal [see Warnings and Precautions (5.7)].

Dosage according to age is as follows:

AGE at 1st dose	DOSAGE (mg/kg)		
	1st	2nd	3rd
Less than 48 hours	0.2	0.1	0.1
2 to 7 days	0.2	0.2	0.2
Over 7 days	0.2	0.25	0.25

If the ductus arteriosus closes or is significantly reduced in size after an interval of 48 hours or more from completion of the first course of Indomethacin for Injection, no further doses are necessary. If the ductus arteriosus re-opens, a second course of 1 to 3 doses may be given, each dose separated by a 12 to 24 hour interval as described above.

If the neonate remains unresponsive to therapy with Indomethacin for Injection after 2 courses, surgery may be necessary for closure of the ductus arteriosus.

2.1 Directions for Use

Parenteral drug products should be inspected visually for particulate matter and discoloration prior to administration whenever solution and container permit.

The reconstituted solution, pH 6.0 to 7.5, is clear, slightly yellow and essentially free from visible particles.

Prepare the solution with 1 to 2 mL of preservative-free Sterile Sodium Chloride Injection, 0.9 percent or preservative-free Sterile Water for Injection. Benzyl alcohol as a preservative has been associated with toxicity in neonates. Therefore, do not use diluents that contain preservatives. If 1 mL of diluent is used, the concentration of indomethacin in the solution will equal approximately 0.1 mg/0.1 mL; if 2 mL of diluent are used, the concentration of the solution will equal approximately 0.05 mg/0.1 mL. Discard any unused portion of the solution as it does not contain a preservative. Prepare a fresh solution just prior to each administration. Once reconstituted, the indomethacin solution may be injected intravenously. While the optimal rate of injection has not been established, published literature suggests an infusion rate over 20 to 30 minutes.

Further dilution with intravenous infusion solutions is not recommended.

3 DOSAGE FORMS AND STRENGTHS

Indomethacin for Injection is supplied in single dose vials containing 1 mg of indomethacin as a sterile lyophilized powder or plug for reconstitution.

4 CONTRAINDICATIONS

Indomethacin for Injection is contraindicated in neonates:

- With proven or suspected infection that is untreated
- Who are bleeding, especially those with active intracranial hemorrhage or gastrointestinal bleeding
- With thrombocytopenia or coagulation defects
- With or who are suspected of having necrotizing enterocolitis
- With significant impairment of renal function
- With congenital heart disease in whom patency of the ductus arteriosus is necessary for satisfactory pulmonary or systemic blood flow (e.g., pulmonary atresia, severe tetralogy of Fallot, severe coarctation of the aorta).

5 WARNINGS AND PRECAUTIONS

5.1 Infection

Indomethacin may mask the usual signs and symptoms of infection. Therefore, the physician must be continually on the alert for this and should use the drug with extra care in the presence of existing controlled infection.

5.2 Hepatic Reactions

Severe hepatic reactions have been reported in adults treated chronically with oral indomethacin for arthritic disorders. [For further information, see package insert for oral indomethacin]. If clinical signs and symptoms consistent with liver disease develop in the neonate, or if systemic manifestations occur, discontinue Indomethacin for Injection.

5.3 Platelet Aggregation

Indomethacin for Injection may inhibit platelet aggregation. In one small study, platelet aggregation was grossly abnormal after indomethacin therapy (given orally to premature infants to close the ductus arteriosus). Platelet aggregation returned to normal by the tenth day. Observe premature infants for signs of bleeding.

5.4 Gastrointestinal Effects

In the collaborative study, major gastrointestinal bleeding was no more common in neonates receiving indomethacin than in neonates on placebo. However, minor gastrointestinal bleeding (i.e., chemical detection of blood in the stool) was more commonly noted in neonates treated with indomethacin. Severe gastrointestinal effects have been reported in adults with various arthritic disorders treated chronically with oral indomethacin. [For further information, see package insert for oral indomethacin].

5.5 Central Nervous System Effects

Prematurity per se is associated with an increased incidence of spontaneous intraventricular hemorrhage. Because indomethacin may inhibit platelet aggregation, the potential for intraventricular bleeding may be increased. However, in the large multicenter study of Indomethacin for Injection, the incidence of intraventricular hemorrhage in neonates treated with Indomethacin for Injection was not

significantly higher than in the control neonates.

5.6 Renal Effects

Indomethacin for Injection may cause significant reduction in urine output (50 percent or more) with concomitant elevations of blood urea nitrogen and creatinine, and reductions in glomerular filtration rate and creatinine clearance. These effects in most neonates are transient, disappearing with cessation of therapy with Indomethacin for Injection. However, because adequate renal function can depend upon renal prostaglandin synthesis, Indomethacin for Injection may precipitate renal insufficiency, including acute renal failure, especially in neonates with other conditions that may adversely affect renal function (e.g., extracellular volume depletion from any cause, congestive heart failure, sepsis, concomitant use of any nephrotoxic drug, hepatic dysfunction). When significant suppression of urine volume occurs after a dose of Indomethacin for Injection, do not give additional doses until urine output returns to normal levels.

Indomethacin for Injection in pre-term infants may suppress water excretion to a greater extent than sodium excretion. When this occurs, a significant reduction in serum sodium values (i.e., hyponatremia) may result. Monitor renal function and serum electrolyte levels during therapy with Indomethacin for Injection [see *Dosage and Administration (2)*].

5.7 Administration

Administer Indomethacin for Injection carefully to avoid extravascular injection or leakage as the solution may be irritating to tissue.

6 ADVERSE REACTIONS

6.1 Clinical Trials Experience

In a double-blind, placebo-controlled trial of 405 premature infants weighing less than or equal to 1,750 g with evidence of large ductal shunting, in those neonates treated with indomethacin (n=206), there was a statistically significantly greater incidence of bleeding problems, including gross or microscopic bleeding into the gastrointestinal tract, oozing from the skin after needle stick, pulmonary hemorrhage, and disseminated intravascular coagulopathy. There was no statistically significant difference between treatment groups in intracranial hemorrhage.

The neonates treated with Indomethacin for Injection had a significantly higher incidence of transient oliguria and elevations of serum creatinine (greater than or equal to 1.8 mg/dL) than did the neonates treated with placebo.

The incidences of retrolental fibroplasia (grades III and IV) and pneumothorax in neonates treated with Indomethacin for Injection were no greater than in placebo controls and were statistically significantly lower than in surgically-treated neonates.

The following additional adverse reactions in neonates have been reported from the collaborative study, anecdotal case reports, from other studies using rectal, oral, or intravenous indomethacin for treatment of patent ductus arteriosus or in marketed use. The rates are calculated from a database that contains experience of 849 indomethacin-treated neonates reported in the medical literature, regardless of the route of administration. One year follow-up is available on 175 neonates and shows no long-term sequelae that could be attributed to indomethacin. In controlled clinical studies, only electrolyte imbalance and renal dysfunction (of the reactions listed below) occurred statistically significantly more frequently after Indomethacin for Injection than after placebo. Reactions marked with a single asterisk (*) occurred in 3 to 9 percent of indomethacin-treated neonates; those marked with a double asterisk (**) occurred in 3 to 9 percent of both indomethacin- and placebo-treated neonates. Unmarked reactions occurred in less than 3 percent of neonates.

Renal: renal failure, renal dysfunction in 41 percent of neonates, including one or more of the

following: reduced urinary output; reduced urine sodium, chloride, or potassium, urine osmolality, free water clearance, or glomerular filtration rate; elevated serum creatinine or BUN; uremia.

Cardiovascular: intracranial bleeding**, pulmonary hypertension.

Gastrointestinal: gastrointestinal bleeding*, vomiting, abdominal distention, transient ileus, gastric perforation, localized perforation(s) of the small and/or large intestine, necrotizing enterocolitis.

Metabolic: hyponatremia*, elevated serum potassium*, reduction in blood sugar, including hypoglycemia, increased weight gain (fluid retention).

Coagulation: decreased platelet aggregation [see *Warnings and Precautions (5.3)*].

The following adverse reactions have also been reported in neonates treated with indomethacin, however, a causal relationship to therapy with Indomethacin for Injection has not been established:

Cardiovascular: bradycardia.

Respiratory: apnea, exacerbation of pre-existing pulmonary infection.

Metabolic: acidosis/alkalosis.

Hematologic: disseminated intravascular coagulation, thrombocytopenia.

Ophthalmic: retrolental fibroplasia.**

A variety of additional adverse experiences have been reported in adults treated with oral indomethacin for moderate to severe rheumatoid arthritis, osteoarthritis, ankylosing spondylitis, acute painful shoulder and acute gouty arthritis (see package insert for oral indomethacin for additional information concerning adverse reactions and other cautionary statements). Their relevance to the pre-term infant receiving indomethacin for patent ductus arteriosus is unknown, however, the possibility exists that these experiences may be associated with the use of Indomethacin for Injection in pre-term infants.

7 DRUG INTERACTIONS

As renal function may be reduced by Indomethacin for Injection, consider reducing the dosage of those medications that rely on adequate renal function for their elimination.

7.1 Digoxin

Because the half-life of digoxin (given frequently to pre-term infants with patent ductus arteriosus and associated cardiac failure) may be prolonged when given concomitantly with indomethacin, observe neonates receiving concomitant digoxin closely; frequent ECGs and serum digoxin levels may be required to prevent or detect digoxin toxicity early.

7.2 Anticoagulants

Indomethacin usually does not influence the hypoprothrombinemia produced by anticoagulants. When indomethacin is added to anticoagulants, monitor prothrombin time closely. In post-marketing experience, bleeding has been reported in patients on concomitant treatment with anticoagulants and Indomethacin for Injection.

7.3 Furosemide

Therapy with indomethacin may blunt the natriuretic effect of furosemide. This response has been attributed to inhibition of prostaglandin synthesis by non-steroidal anti-inflammatory drugs. In a study of 19 premature infants with patent ductus arteriosus treated with either Indomethacin for Injection alone or a combination of Indomethacin for Injection and furosemide, results showed that neonates receiving both Indomethacin for Injection and furosemide had significantly higher urinary output, higher levels of sodium and chloride excretion, and higher glomerular filtration rates than did those receiving Indomethacin for Injection alone. In this study, therapy with furosemide helped to maintain renal

function in the premature infant when Indomethacin for Injection was added.

7.4 Aminoglycosides

In one study of premature infants treated with Indomethacin for Injection and also receiving either gentamicin or amikacin, both peak and trough levels of these aminoglycosides were significantly elevated.

7.5 Drugs that Act on the Renin-Angiotensin System

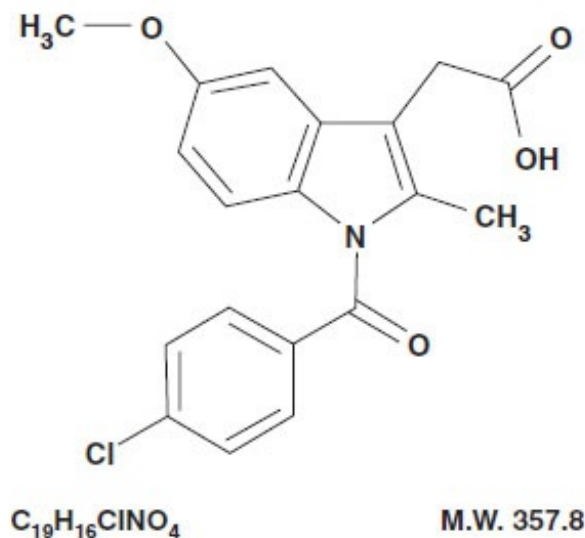
In some patients with compromised renal function, the co-administration of an NSAID and an ACE inhibitor or angiotensin II antagonist may result in further deterioration of renal function, including possible acute renal failure, which is usually reversible.

11 DESCRIPTION

Sterile Indomethacin for Injection for intravenous administration is lyophilized indomethacin for injection. Each vial of indomethacin for injection contains 1 mg indomethacin; 0.29 mg monobasic sodium phosphate, 0.41 mg dibasic sodium phosphate and not more than 0.24 mg of sodium hydroxide (used for converting indomethacin base to the sodium salt) as a white to yellow lyophilized powder or plug. Variations in the size of the lyophilized plug and the intensity of color have no relationship to the quality or amount of indomethacin present in the vial.

The reconstituted solution, pH 6.0 to 7.5, is clear, slightly yellow and essentially free from visible particles. The pH of the product does not meet the USP monograph [FD&C Act Chapter V, SEC. 501. [21USC §351](b)].

Indomethacin is designated chemically as 1-(4-chlorobenzoyl)-5-methoxy-2-methyl-1*H*-indole-3-acetic acid. The structural formula is:



12 CLINICAL PHARMACOLOGY

12.1 Mechanism of Action

Although the exact mechanism of action through which indomethacin causes closure of a patent ductus arteriosus is not known, it is believed to be through inhibition of prostaglandin synthesis.

12.2 Pharmacodynamics

Indomethacin has been shown to be a potent inhibitor of prostaglandin synthesis, both *in vitro* and *in vivo*. In human newborns with certain congenital heart malformations, PGE 1 dilates the ductus arteriosus. In fetal and newborn lambs, E type prostaglandins have also been shown to maintain the patency of the ductus, and as in human newborns, indomethacin causes its constriction.

Studies in healthy young animals and in premature infants with patent ductus arteriosus indicated that, after the first dose of intravenous indomethacin, there was a transient reduction in cerebral blood flow velocity and cerebral blood flow. Similar decreases in mesenteric blood flow and velocity have been observed. The clinical significance of these effects has not been established.

In double-blind, placebo-controlled studies of Indomethacin for Injection in 460 small pre-term infants, weighing 1,750 g or less, the neonates treated with placebo had a ductus closure rate after 48 hours of 25 to 30 percent, whereas those treated with Indomethacin for Injection had a 75 to 80 percent closure rate. In one of these studies, a multicenter study, involving 405 pre-term infants, later reopening of the ductus arteriosus occurred in 26 percent of neonates treated with Indomethacin for Injection however, 70 percent of these closed subsequently without the need for surgery or additional indomethacin.

12.3 Pharmacokinetics

The disposition of indomethacin following intravenous administration (0.2 mg/kg) in pre-term neonates with patent ductus arteriosus has not been extensively evaluated. Even though the plasma half-life of indomethacin was variable among premature infants, it was shown to vary inversely with postnatal age and weight. In one study, of 28 neonates who could be evaluated, the plasma half-life in those less than 7 days old averaged 20 hours (range: 3 to 60 hours, n=18). In neonates older than 7 days, the mean plasma half-life of indomethacin was 12 hours (range: 4 to 38 hours, n=10). Grouping the neonates by weight, mean plasma half-life in those weighing less than 1,000 g was 21 hours (range: 9 to 60 hours, n=10); in those neonates weighing more than 1,000 g, the mean plasma half-life was 15 hours (range: 3 to 52 hours, n=18).

Following intravenous administration in adults, indomethacin is eliminated via renal excretion, metabolism, and biliary excretion. Indomethacin undergoes appreciable enterohepatic circulation. The mean plasma half-life of indomethacin is 4.5 hours. In the absence of enterohepatic circulation, it is 90 minutes. Indomethacin has been found to cross the blood-brain barrier and the placenta.

In adults, about 99 percent of indomethacin is bound to protein in plasma over the expected range of therapeutic plasma concentrations. The percent bound in neonates has not been studied. In controlled trials in premature infants, however, no evidence of bilirubin displacement has been observed as evidenced by increased incidence of bilirubin encephalopathy (kernicterus).

13 NONCLINICAL TOXICOLOGY

In rats and mice, oral indomethacin 4 mg/kg/day given during the last three days of gestation caused a decrease in maternal weight gain and some maternal and fetal deaths. An increased incidence of neuronal necrosis in the diencephalon in the live-born fetuses was observed. At 2 mg/kg/day, no increase in neuronal necrosis was observed as compared to the control groups. Administration of 0.5 or 4 mg/kg/day during the first three days of life did not cause an increase in neuronal necrosis at either dose level.

Pregnant rats, given 2 mg/kg/day and 4 mg/kg/day during the last trimester of gestation, delivered offspring whose pulmonary blood vessels were both reduced in number and excessively muscularized. These findings are similar to those observed in the syndrome of persistent pulmonary hypertension of the neonate.

16 HOW SUPPLIED/STORAGE AND HANDLING

16.1 How Supplied

Sterile Indomethacin for Injection is a lyophilized white to yellow powder or plug supplied as single dose vials containing indomethacin for injection, equivalent to 1 mg indomethacin.

Product No.	NDC No.	
605903	63323-659-03	1 mg per vial, Packaged individually.

The container closure is not made with natural rubber latex.

16.2 Storage

Store at 25°C (77°F) with excursions permitted to 15° to 30°C (59° to 86°F). Protect from light. Store container in carton until contents have been used.



www.fresenius-kabi.us

451150B

Revised: November 2016

PACKAGE LABEL - PRINCIPAL DISPLAY - Indomethacin for Injection 1 mg Vial Label

Indomethacin

for Injection

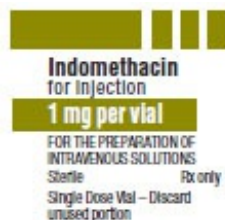
1 mg per vial

FOR THE PREPARATION OF INTRAVENOUS SOLUTIONS

Sterile Rx only

Single Dose Vial -

Discard unused portion



PACKAGE LABEL - PRINCIPAL DISPLAY - Indomethacin for Injection 1 mg Carton Panel

Indomethacin

for Injection

1 mg per vial

For Intravenous Use Only

FOR THE PREPARATION OF INTRAVENOUS SOLUTIONS

Rx only

One vial

Single Dose Vial - Discard any unused portion immediately.



Indomethacin for Injection

1 mg per vial

For Intravenous Use Only

FOR THE PREPARATION OF
INTRAVENOUS SOLUTIONS

Rx only

One vial

Single Dose Vial - Discard any
unused portion immediately.

INDOMETHACIN

indomethacin injection, powder, lyophilized, for solution

Product Information

Product Type	HUMAN PRESCRIPTION DRUG	Item Code (Source)	NDC:63323-659
Route of Administration	INTRAVENOUS		

Active Ingredient/Active Moiety

Ingredient Name	Basis of Strength	Strength
INDOMETHACIN (UNII: XXE1CET956) (INDOMETHACIN - UNII:XXE1CET956)	INDOMETHACIN	1 mg in 1 mL

Inactive Ingredients

Ingredient Name	Strength
SODIUM PHOSPHATE, MONOBASIC (UNII: 3980JH2SW)	0.29 mg in 1 mL
SODIUM PHOSPHATE, DIBASIC (UNII: GR686LBA74)	0.41 mg in 1 mL
SODIUM HYDROXIDE (UNII: 55X04QC32I)	

Packaging

#	Item Code	Package Description	Marketing Start Date	Marketing End Date
1	NDC:63323-659-03	1 in 1 CARTON	03/19/2010	
1		1 mL in 1 VIAL; Type 0: Not a Combination Product		

Marketing Information

Marketing Category	Application Number or Monograph Citation	Marketing Start Date	Marketing End Date
NDA	NDA022536	03/19/2010	

Labeler - Fresenius Kabi USA, LLC (608775388)

Establishment

Name	Address	ID/FEI	Business Operations
Fresenius Kabi USA, LLC		840771732	MANUFACTURE(63323-659)

Revised: 1/2020

Fresenius Kabi USA, LLC