

SILDENAFIL- sildenafil citrate powder, for suspension

Taro Pharmaceuticals U.S.A. Inc.

HIGHLIGHTS OF PRESCRIBING INFORMATION

These highlights do not include all the information needed to use **SILDENAFIL FOR ORAL SUSPENSION** safely and effectively. See full prescribing information for **SILDENAFIL FOR ORAL SUSPENSION**.

SILDENAFIL for oral suspension
Initial U.S. Approval: 1998

RECENT MAJOR CHANGES

Indications and Usage (1)	1/2023
Dosage and Administration (2.1, 2.2, 2.3)	1/2023

INDICATIONS AND USAGE

Adults

Sildenafil is a phosphodiesterase-5 (PDE-5) inhibitor indicated for the treatment of pulmonary arterial hypertension (PAH) (World Health Organization [WHO] Group I) in adults to improve exercise ability and delay clinical worsening. (1)

DOSAGE AND ADMINISTRATION

- Adults: 20 mg three times a day. (2.1)

DOSAGE FORMS AND STRENGTHS

- For oral suspension: 10 mg/mL (when reconstituted) (3)

CONTRAINDICATIONS

- Use with organic nitrates or riociguat. (4)
- History of hypersensitivity reaction to sildenafil or any component of the tablet, injection, or oral suspension. (4)

WARNINGS AND PRECAUTIONS

- Vasodilation effects may be more common in patients with hypotension or on antihypertensive therapy. (5.1)
- Use in pulmonary veno-occlusive disease (PVOD) may cause pulmonary edema and is not recommended. (5.2)
- Hearing or visual impairment: Seek medical attention if sudden decrease or loss of vision or hearing occurs. (5.4, 5.5)
- Pulmonary hypertension (PH) secondary to sickle cell disease: Sildenafil may cause serious vaso-occlusive crises. (5.8)

ADVERSE REACTIONS

Adults: Headache, dyspepsia, flushing, pain in limb, myalgia, back pain and diarrhea. (6.1, 6.2)

To report SUSPECTED ADVERSE REACTIONS, contact Taro Pharmaceuticals U.S.A., Inc. at 1-866-923-4914 or FDA at 1-800-FDA-1088 or www.fda.gov/medwatch.

DRUG INTERACTIONS

- Use with strong CYP3A inhibitors: Not recommended. (7, 12.3)
- Concomitant PDE-5 inhibitors: Avoid use with Viagra[®] or other PDE-5 inhibitors. (5.6)

Pediatric use information is approved for Viatrix Specialty LLC's REVATIO[®] (sildenafil) product. However, due to Viatrix Specialty LLC's marketing exclusivity rights, this drug product is not labeled with that information.

See 17 for PATIENT COUNSELING INFORMATION and FDA-approved patient labeling.

Revised: 12/2023

FULL PRESCRIBING INFORMATION: CONTENTS*

1 INDICATIONS AND USAGE

2 DOSAGE AND ADMINISTRATION

2.1 Recommended Dosage in Adults

2.3 Reconstitution of the Powder for Oral Suspension

3 DOSAGE FORMS AND STRENGTHS

4 CONTRAINDICATIONS

5 WARNINGS AND PRECAUTIONS

5.1 Hypotension

5.2 Worsening Pulmonary Vascular Occlusive Disease

5.3 Epistaxis

5.4 Visual Loss

5.5 Hearing Loss

5.6 Combination with Other PDE-5 inhibitors

5.7 Priapism

5.8 Vaso-occlusive Crisis in Patients with Pulmonary Hypertension Secondary to Sickle Cell Disease

6 ADVERSE REACTIONS

6.1 Clinical Trials Experience

6.2 Postmarketing Experience

7 DRUG INTERACTIONS

8 USE IN SPECIFIC POPULATIONS

8.1 Pregnancy

8.2 Lactation

8.4 Pediatric Use

8.5 Geriatric Use

8.6 Patients with Hepatic Impairment

8.7 Patients with Renal Impairment

10 OVERDOSAGE

11 DESCRIPTION

12 CLINICAL PHARMACOLOGY

12.1 Mechanism of Action

12.2 Pharmacodynamics

12.3 Pharmacokinetics

13 NONCLINICAL TOXICOLOGY

13.1 Carcinogenesis, Mutagenesis, Impairment of Fertility

14 CLINICAL STUDIES

16 HOW SUPPLIED/STORAGE AND HANDLING

17 PATIENT COUNSELING INFORMATION

* Sections or subsections omitted from the full prescribing information are not listed.

FULL PRESCRIBING INFORMATION

1 INDICATIONS AND USAGE

Adults

Sildenafil for Oral Suspension is indicated for the treatment of pulmonary arterial hypertension (PAH) (World Health Organization [WHO] Group I) in adults to improve exercise ability and delay clinical worsening [see *Clinical Studies (14)*].

Pediatric use information is approved for Viatris Specialty LLC's REVATIO® (sildenafil) product. However, due to Viatris Specialty LLC's marketing exclusivity rights, this drug product is not labeled with that information.

2 DOSAGE AND ADMINISTRATION

2.1 Recommended Dosage in Adults

Oral Dosage

The recommended dosage of Sildenafil for Oral Suspension is 20 mg three times a day [see *Clinical Studies (14)*].

Pediatric use information is approved for Viatris Specialty LLC's REVATIO® (sildenafil) product. However, due to Viatris Specialty LLC's marketing exclusivity rights, this drug product is not labeled with that information.

2.3 Reconstitution of the Powder for Oral Suspension

Note:Reconstitute the contents of the bottle with a total volume of 90 mL (60 mL followed by 30 mL). Refer to the detailed instructions below.

1. Tap the bottle to loosen the powder.
2. Add 60 mL of water to the bottle.
3. Replace the cap and shake the bottle vigorously for a minimum of 30 seconds.
4. Add another 30 mL of water to the bottle.
5. Replace the cap and shake the bottle vigorously for a minimum of 30 seconds.
6. Remove cap and press the bottle adaptor into the neck of the bottle. Replace the cap on the bottle.
7. Write the expiration date of the reconstituted oral suspension on the bottle label (the expiration date of the reconstituted oral suspension is 60 days from the date of reconstitution).

Incompatibilities

Do not mix with any other medication or additional flavoring agent.

3 DOSAGE FORMS AND STRENGTHS

Sildenafil for Oral Suspension

White to off-white powders containing 1.57 g of sildenafil citrate (equivalent to 1.12 g of sildenafil) in a bottle for reconstitution to 10 mg/mL. Following reconstitution with 90 mL of water, the total volume of the oral suspension is 112 mL. A 2-mL oral dosing syringe (with 0.5 mL and 2 mL dose markings) and a press-in bottle adaptor are also provided.

4 CONTRAINDICATIONS

Sildenafil for Oral Suspension is contraindicated in patients with:

- Concomitant use of organic nitrates in any form, either regularly or intermittently, because of the greater risk of hypotension [see *Warnings and Precautions (5.1)*].
- Concomitant use of riociguat, a guanylate cyclase stimulator. Phosphodiesterase-5 (PDE-5) inhibitors, including sildenafil, may potentiate the hypotensive effects of riociguat.
- Known hypersensitivity to sildenafil or any component of the tablet, injection, or oral suspension. Hypersensitivity, including anaphylactic reaction, anaphylactic shock and anaphylactoid reaction, has been reported in association with the use of sildenafil.

5 WARNINGS AND PRECAUTIONS

5.1 Hypotension

Sildenafil has vasodilatory properties, resulting in mild and transient decreases in blood pressure. Before prescribing Sildenafil for Oral Suspension, carefully consider whether patients with certain underlying conditions could be adversely affected by such vasodilatory effects (e.g., patients on antihypertensive therapy or with resting hypotension [blood pressure less than 90/50], fluid depletion, severe left ventricular outflow obstruction, or autonomic dysfunction). Monitor blood pressure when co-administering blood pressure lowering drugs with Sildenafil for Oral Suspension.

5.2 Worsening Pulmonary Vascular Occlusive Disease

Pulmonary vasodilators may significantly worsen the cardiovascular status of patients with pulmonary veno-occlusive disease (PVOD). Since there are no clinical data on administration of Sildenafil for Oral Suspension to patients with veno-occlusive disease, administration of Sildenafil for Oral Suspension to such patients is not recommended. Should signs of pulmonary edema occur when Sildenafil for Oral Suspension is administered, consider the possibility of associated PVOD.

5.3 Epistaxis

The incidence of epistaxis was 13% in patients taking Sildenafil for Oral Suspension with PAH secondary to CTD. This effect was not seen in idiopathic PAH (sildenafil 3%, placebo 2%) patients. The incidence of epistaxis was also higher in Sildenafil for Oral Suspension-treated patients with a concomitant oral vitamin K antagonist (9% versus 2% in those not treated with concomitant vitamin K antagonist).

The safety of Sildenafil for Oral Suspension is unknown in patients with bleeding disorders or active peptic ulceration.

5.4 Visual Loss

When used to treat erectile dysfunction, non-arteritic anterior ischemic optic neuropathy (NAION), a cause of decreased vision including permanent loss of vision, has been reported post marketing in temporal association with the use of PDE-5 inhibitors, including sildenafil. Most patients had underlying anatomic or vascular risk factors for developing NAION, including low cup to disc ratio ("crowded disc").

Advise patients to seek immediate medical attention in the event of a sudden loss of vision in one or both eyes while taking Sildenafil for Oral Suspension.

There are no controlled clinical data on the safety or efficacy of Sildenafil for Oral Suspension in patients with retinitis pigmentosa, a minority of whom have genetic disorders of retinal phosphodiesterases. Therefore, use of sildenafil in patients with retinitis pigmentosa is not recommended.

5.5 Hearing Loss

Cases of sudden decrease or loss of hearing, which may be accompanied by tinnitus and dizziness, have been reported in temporal association with the use of PDE-5 inhibitors, including sildenafil. In some of the cases, medical conditions and other factors were reported that may have played a role. In many cases, medical follow-up information was limited. It is not possible to determine whether these reported events are related directly to the use of Sildenafil for Oral Suspension, to the patient's underlying risk factors for hearing loss, a combination of these factors, or to other factors.

Advise patients to seek prompt medical attention in the event of sudden decrease or loss of hearing while taking PDE-5 inhibitors, including Sildenafil for Oral Suspension.

5.6 Combination with Other PDE-5 inhibitors

Sildenafil is also marketed as VIAGRA[®]. The safety and efficacy of combinations of Sildenafil for Oral Suspension with VIAGRA or other PDE-5 inhibitors have not been studied. Inform patients taking Sildenafil for Oral Suspension not to take VIAGRA or other PDE-5 inhibitors.

5.7 Priapism

Use Sildenafil for Oral Suspension with caution in patients with anatomical deformation of the penis (e.g., angulation, cavernosal fibrosis, or Peyronie's disease) or in patients who have conditions, which may predispose them to priapism (e.g., sickle cell anemia, multiple myeloma, or leukemia). In the event of an erection that persists longer than 4 hours, the patient should seek immediate medical assistance. If priapism (painful erection greater than 6 hours in duration) is not treated immediately, penile tissue damage and permanent loss of potency could result.

5.8 Vaso-occlusive Crisis in Patients with Pulmonary Hypertension Secondary to Sickle Cell Disease

In a small, prematurely terminated study of patients with pulmonary hypertension (PH) secondary to sickle cell disease, vaso-occlusive crises requiring hospitalization were more commonly reported by patients who received Sildenafil for Oral Suspension than by those randomized to placebo. The effectiveness and safety of Sildenafil for Oral Suspension in the treatment of PH secondary to sickle cell disease has not been established.

6 ADVERSE REACTIONS

The following serious adverse events are discussed elsewhere in the labeling:

- Hypotension [see *Warnings and Precautions* (5.1)]

- Vision Loss [see Warnings and Precautions (5.4)]
- Hearing Loss [see Warnings and Precautions (5.5)]
- Priapism [see Warnings and Precautions (5.7)]
- Vaso-occlusive Crisis in Patients with Pulmonary Hypertension Secondary to Sickle Cell Disease [see Warnings and Precautions (5.8)]

6.1 Clinical Trials Experience

Because clinical trials are conducted under widely varying conditions, adverse reaction rates observed in the clinical trials of a drug cannot be directly compared to rates in the clinical trials of another drug and may not reflect the rates observed in practice.

In a 12-week, placebo-controlled clinical study and an open-label extension study (SUPER-1) in 277 sildenafil-treated adults with PAH (WHO Group I) [see *Clinical Studies (14)*] the adverse reactions that were reported by at least 10% of sildenafil-treated patients in any dosing group, and were more frequent in sildenafil-treated patients than in placebo-treated patients are shown in Table 1. Adverse reactions were generally transient and mild to moderate in nature. The overall frequency of discontinuation in sildenafil-treated patients was 3% (20 mg and 40 mg three times a day) and 8% (80 mg three times a day). The overall frequency of discontinuation for placebo was 3%.

Table 1. Most Common Adverse Reactions in Patients Treated with Sildenafil 20 mg, 40 mg, 80 mg and Placebo three times per day in SUPER-1 (More Frequent in Sildenafil-Treated Patients than Placebo-Treated Patients)

	Sildenafil 20 mg (n = 69)	Sildenafil 40 mg (n = 67)	Sildenafil 80 mg (n = 71)	Placebo (n = 70)
Headache	46%	42%	49%	39%
Flushing	10%	9%	16%	4%
Pain in Limb	7%	15%	9%	6%
Myalgia	7%	6%	14%	4%
Back Pain	13%	13%	9%	11%
Dyspepsia	13%	8%	13%	7%
Diarrhea	9%	12%	10%	6%

In a placebo-controlled fixed dose titration study (PACES-1) of sildenafil (starting with recommended dose of 20 mg and increased to 40 mg and then 80 mg all three times a day) as an adjunct to intravenous epoprostenol in patients with PAH, no new safety issues were identified except for edema, which occurred in 25% of subjects in the combined sildenafil + epoprostenol group compared with 13% of subjects in the epoprostenol group [see *Clinical Studies (14)*].

Pediatric use information is approved for Viatriis Specialty LLC's REVATIO[®] (sildenafil) product. However, due to Viatriis Specialty LLC's marketing exclusivity rights, this drug product is not labeled with that information.

6.2 Postmarketing Experience

The following adverse reactions have been identified during post approval use of

sildenafil (marketed for both PAH and erectile dysfunction). Because these reactions are reported voluntarily from a population of uncertain size, it is not always possible to reliably estimate their frequency or establish a causal relationship to drug exposure.

Cardiovascular Events

In postmarketing experience with sildenafil at doses indicated for erectile dysfunction, serious cardiovascular, cerebrovascular, and vascular events, including myocardial infarction, sudden cardiac death, ventricular arrhythmia, cerebrovascular hemorrhage, transient ischemic attack, hypertension, pulmonary hemorrhage, and subarachnoid and intracerebral hemorrhages have been reported in temporal association with the use of the drug. Most, but not all, of these patients had preexisting cardiovascular risk factors. Many of these events were reported to occur during or shortly after sexual activity, and a few were reported to occur shortly after the use of sildenafil without sexual activity. Others were reported to have occurred hours to days after use concurrent with sexual activity. It is not possible to determine whether these events are related directly to sildenafil, to sexual activity, to the patient's underlying cardiovascular disease, or to a combination of these or other factors.

Nervous System

Seizure, seizure recurrence

Ophthalmologic

NAION [see *Warnings and Precautions (5.4)*, *Patient Counseling Information (17)*] .

7 DRUG INTERACTIONS

Nitrates

Concomitant use of Sildenafil for Oral Suspension with nitrates in any form is contraindicated [see *Contraindications (4)*] .

Strong CYP3A Inhibitors

Concomitant use of Sildenafil for Oral Suspension with strong CYP3A inhibitors is not recommended [see *Clinical Pharmacology (12.3)*] .

Moderate-to-Strong CYP3A Inducers

Concomitant use of Sildenafil for Oral Suspension with moderate-to-strong CYP3A inducers (such as bosentan) decreases the sildenafil exposure. Dose up-titration of Sildenafil for Oral Suspension may be needed when initiating treatment with moderate-to-strong CYP3A inducers. Reduce the dose of Sildenafil for Oral Suspension to 20 mg three times a day when discontinuing treatment with moderate-to-strong CYP3A inducers [see *Clinical Pharmacology (12.3)* and *Clinical Studies (14)*] .

8 USE IN SPECIFIC POPULATIONS

8.1 Pregnancy

Risk Summary

Limited published data from randomized controlled trials, case-controlled trials, and case

series do not report a clear association with sildenafil and major birth defects, miscarriage, or adverse maternal or fetal outcomes when sildenafil is used during pregnancy. There are risks to the mother and fetus from untreated pulmonary arterial hypertension (*see Clinical Considerations*). Animal reproduction studies conducted with sildenafil showed no evidence of embryo-fetal toxicity or teratogenicity at doses up to 32- and 65-times the recommended human dose (RHD) of 20 mg three times a day in rats and rabbits, respectively (*see Data*) .

The estimated background risk of major birth defects and miscarriage for the indicated population is unknown. All pregnancies have a background risk of birth defect, loss, or other adverse outcomes. In the U.S. general population, the estimated background risk of major birth defects and miscarriage in clinically recognized pregnancies is 2 to 4% and 15 to 20%, respectively.

Clinical Considerations

Disease-Associated Maternal and/or Embryo/Fetal Risk

Pregnant women with untreated pulmonary arterial hypertension are at risk for heart failure, stroke, preterm delivery, and maternal and fetal death.

Data

Animal Data

No evidence of teratogenicity, embryotoxicity, or fetotoxicity was observed in pregnant rats or rabbits dosed with sildenafil 200 mg/kg/day during organogenesis, a level that is, on a mg/m² basis, 32- and 65-times, respectively, the recommended human dose (RHD) of 20 mg three times a day. In a rat pre- and postnatal development study, the no-observed-adverse-effect dose was 30 mg/kg/day (equivalent to 5-times the RHD on a mg/m² basis).

8.2 Lactation

Risk Summary

Limited published data from a case report describe the presence of sildenafil and its active metabolite in human milk. There is insufficient information about the effects of sildenafil on the breastfed infant and no information on the effects of sildenafil on milk production. Limited clinical data during lactation preclude a clear determination of the risk of sildenafil to an infant during lactation.

8.4 Pediatric Use

The safety and effectiveness of sildenafil have not been established in pediatric patients younger than 1 year of age.

Pediatric use information is approved for Viatrix Specialty LLC's REVATIO[®] (sildenafil) product. However, due to Viatrix Specialty LLC's marketing exclusivity rights, this drug product is not labeled with that information.

8.5 Geriatric Use

Clinical studies of Sildenafil for Oral Suspension did not include sufficient numbers of patients aged 65 and over to determine whether they respond differently from younger patients. Other reported clinical experience has not identified differences in responses

between the elderly and younger patients. In general, dose selection for an elderly patient should be cautious, reflecting the greater frequency of decreased hepatic, renal, or cardiac function, and of concomitant disease or other drug therapy [see *Clinical Pharmacology* (12.3)] .

8.6 Patients with Hepatic Impairment

No dose adjustment for mild to moderate impairment is required. Severe impairment has not been studied [see *Clinical Pharmacology* (12.3)] .

8.7 Patients with Renal Impairment

No dose adjustment is required (including severe impairment CLcr <30 mL/min) [see *Clinical Pharmacology* (12.3)] .

10 OVERDOSAGE

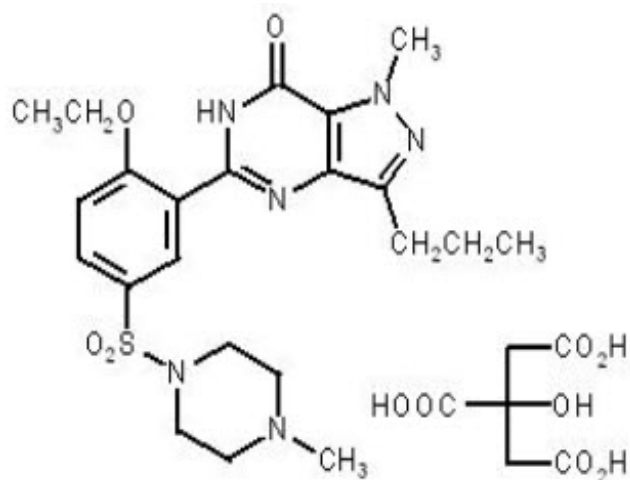
In studies with healthy volunteers of single doses up to 800 mg, adverse events were similar to those seen at lower doses but rates and severities were increased.

In cases of overdose, standard supportive measures should be adopted as required. Renal dialysis is not expected to accelerate clearance as sildenafil is highly bound to plasma proteins and it is not eliminated in the urine.

11 DESCRIPTION

Sildenafil for Oral Suspension, a phosphodiesterase-5 (PDE-5) inhibitor, is the citrate salt of sildenafil, a selective inhibitor of cyclic guanosine monophosphate (cGMP)-specific phosphodiesterase type-5 (PDE-5). Sildenafil is also marketed as VIAGRA[®] for erectile dysfunction.

Sildenafil citrate is designated chemically as 1-[[3-(6,7-dihydro-1-methyl-7-oxo-3-propyl-1 *H*-pyrazolo [4,3- *d*] pyrimidin-5-yl)-4-ethoxyphenyl] sulfonyl]-4-methylpiperazine citrate and has the following structural formula:



Sildenafil citrate is a white to off-white crystalline powder with a solubility of 3.5 mg/mL in water and a molecular weight of 666.7.

Sildenafil for Oral Suspension is supplied as white to off-white powders containing 1.57 g

of sildenafil citrate (equivalent to 1.12 g sildenafil) in an amber glass bottle intended for reconstitution. Following reconstitution with 90 mL water, the volume of the oral suspension is 112 mL and the oral suspension contains 10 mg/mL sildenafil. The inactive ingredients include citric acid anhydrous, colloidal silicon dioxide, grape flavor, sodium benzoate, sodium citrate dihydrate, sorbitol, sucralose, titanium dioxide, and xanthan gum. In addition to the bottle, a press-in bottle adaptor and an oral dosing syringe (with 0.5 mL and 2 mL dose markings) are provided.

12 CLINICAL PHARMACOLOGY

12.1 Mechanism of Action

Sildenafil is an inhibitor of cGMP specific PDE-5 in the smooth muscle of the pulmonary vasculature, where PDE-5 is responsible for degradation of cGMP. Sildenafil, therefore, increases cGMP within pulmonary vascular smooth muscle cells resulting in relaxation. In patients with PAH, this can lead to vasodilation of the pulmonary vascular bed and, to a lesser degree, vasodilatation in the systemic circulation.

Studies *in vitro* have shown that sildenafil is selective for PDE-5. Its effect is more potent on PDE-5 than on other known phosphodiesterases (10-fold for PDE6, greater than 80-fold for PDE1, greater than 700-fold for PDE2, PDE3, PDE4, PDE7, PDE8, PDE9, PDE10, and PDE11). The approximately 4,000-fold selectivity for PDE-5 versus PDE3 is important because PDE3 is involved in control of cardiac contractility. Sildenafil is only about 10 times as potent for PDE-5 compared to PDE6, an enzyme found in the retina and involved in the phototransduction pathway of the retina. This lower selectivity is thought to be the basis for abnormalities related to color vision observed with higher doses or plasma levels [see *Clinical Pharmacology (12.2)*].

In addition to pulmonary vascular smooth muscle and the corpus cavernosum, PDE-5 is also found in other tissues including vascular and visceral smooth muscle and in platelets. The inhibition of PDE-5 in these tissues by sildenafil may be the basis for the enhanced platelet anti-aggregatory activity of nitric oxide observed *in vitro*, and the mild peripheral arterial-venous dilatation *in vivo*.

12.2 Pharmacodynamics

Effects of Sildenafil on Hemodynamic Measures

Adults

Patients on all Sildenafil for Oral Suspension doses achieved a statistically significant reduction in mean pulmonary arterial pressure (mPAP) compared to those on placebo in a study with no background vasodilators [see *SUPER-1 in Clinical Studies (14)*]. Data on other hemodynamic measures for the Sildenafil for Oral Suspension 20 mg three times a day and placebo dosing regimens is displayed in Table 2. The relationship between these effects and improvements in 6-minute walk distance is unknown.

Table 2. Changes from Baseline in Hemodynamic Parameters at Week 12 [mean (95% CI)] for the Sildenafil for Oral Suspension 20 mg Three Times a Day and Placebo Group

	Placebo	Sildenafil for Oral
--	---------	---------------------

	Placebo (n = 65) *	Suspension 20 mg (n = 65) *
mPAP (mmHg)	0.6 (-0.8, 2)	-2.1 (-4.3, 0)
PVR (dyn•s/cm ⁵)	49 (-54, 153)	-122 (-217, -27)
SVR (dyn•s/cm ⁵)	-78 (-197, 41)	-167 (-307, -26)
RAP (mmHg)	0.3 (-0.9, 1.5)	-0.8 (-1.9, 0.3)
CO (L/min)	-0.1 (-0.4, 0.2)	0.4 (0.1, 0.7)
HR (beats/min)	-1.3 (-4.1, 1.4)	-3.7 (-5.9, -1.4)

mPAP = mean pulmonary arterial pressure; PVR = pulmonary vascular resistance; SVR = systemic vascular resistance; RAP = right atrial pressure; CO = cardiac output; HR = heart rate.

* The number of patients per treatment group varied slightly for each parameter due to missing assessments.

Effects of Sildenafil for Oral Suspension on Blood Pressure

Single oral doses of sildenafil 100 mg administered to healthy volunteers produced decreases in supine blood pressure (mean maximum decrease in systolic/diastolic blood pressure of 8/5 mmHg). The decrease in blood pressure was most notable approximately 1 to 2 hours after dosing and was not different from placebo at 8 hours. Similar effects on blood pressure were noted with 25 mg, 50 mg, and 100 mg doses of sildenafil, therefore the effects are not related to dose or plasma levels within this dosage range. Larger effects were recorded among patients receiving concomitant nitrates [see *Contraindications* (4)] .

Single oral doses of sildenafil up to 100 mg in healthy volunteers produced no clinically relevant effects on electrocardiogram (ECG). After chronic dosing of 80 mg three times a day to patients with PAH, no clinically relevant effects on ECG were reported.

After chronic dosing of 80 mg three times a day sildenafil to healthy volunteers, the largest mean change from baseline in supine systolic and supine diastolic blood pressures was a decrease of 9.0 mmHg and 8.4 mmHg, respectively.

After chronic dosing of 80 mg three times a day sildenafil to patients with systemic hypertension, the mean change from baseline in systolic and diastolic blood pressures was a decrease of 9.4 mmHg and 9.1 mmHg, respectively.

After chronic dosing of 80 mg three times a day sildenafil to patients with PAH, lesser reductions than above in systolic and diastolic blood pressures were observed (a decrease in both of 2 mmHg).

Effects of Sildenafil for Oral Suspension on Vision

At single oral doses of 100 mg and 200 mg, transient dose-related impairment of color discrimination (blue/green) was detected using the Farnsworth-Munsell 100-hue test, with peak effects near the time of peak plasma levels. This finding is consistent with the inhibition of PDE6, which is involved in phototransduction in the retina. An evaluation of visual function at doses up to 200 mg revealed no effects of Sildenafil for Oral Suspension on visual acuity, intraocular pressure, or pupillometry.

Pediatric use information is approved for Viartis Specialty LLC's REVATIO[®] (sildenafil) product. However, due to Viartis Specialty LLC's marketing exclusivity rights, this drug product is not labeled with that information.

12.3 Pharmacokinetics

Absorption and Distribution

Sildenafil is rapidly absorbed after oral administration, with a mean absolute bioavailability of 41% (25 to 63%). Maximum observed plasma concentrations are reached within 30 to 120 minutes (median 60 minutes) of oral dosing in the fasted state. When sildenafil is taken with a high-fat meal, the rate of absorption is reduced, with a mean delay in T_{max} of 60 minutes and a mean reduction in C_{max} of 29%. The mean steady state volume of distribution (V_{ss}) for sildenafil is 105 L, indicating distribution into the tissues.

Sildenafil and its major circulating N-desmethyl metabolite are both approximately 96% bound to plasma proteins. Protein binding is independent of total drug concentrations.

Bioequivalence was established between the 20 mg tablet and the 10 mg/mL oral suspension when administered as a 20 mg single oral dose of sildenafil (as citrate).

Metabolism and Excretion

Sildenafil is cleared predominantly by the CYP3A (major route) and cytochrome P450 2C9 (CYP2C9, minor route) hepatic microsomal isoenzymes. The major circulating metabolite results from N-desmethylation of sildenafil, and is, itself, further metabolized. This metabolite has a phosphodiesterase selectivity profile similar to sildenafil and an *in vitro* potency for PDE-5 approximately 50% of the parent drug. In healthy volunteers, plasma concentrations of this metabolite are approximately 40% of those seen for sildenafil, so that the metabolite accounts for about 20% of sildenafil's pharmacologic effects. In patients with PAH, however, the ratio of the metabolite to sildenafil is higher. Both sildenafil and the active metabolite have terminal half-lives of about 4 hours.

After either oral or intravenous administration, sildenafil is excreted as metabolites predominantly in the feces (approximately 80% of the administered oral dose) and to a lesser extent in the urine (approximately 13% of the administered oral dose).

Population Pharmacokinetics

Age, gender, race, and renal and hepatic function were included as factors assessed in the population pharmacokinetic model to evaluate sildenafil pharmacokinetics in patients with PAH. The dataset available for the population pharmacokinetic evaluation contained a wide range of demographic data and laboratory parameters associated with hepatic and renal function. None of these factors had a significant impact on sildenafil pharmacokinetics in patients with PAH.

In patients with PAH, the average steady-state concentrations were 20 to 50% higher when compared to those of healthy volunteers. There was also a doubling of C_{min} levels compared to healthy volunteers. Both findings suggest a lower clearance and/or a higher oral bioavailability of sildenafil in patients with PAH compared to healthy volunteers.

Pediatric Patients

Pediatric use information is approved for Viartis Specialty LLC's REVATIO[®] (sildenafil) product. However, due to Viartis Specialty LLC's marketing exclusivity rights, this drug product is not labeled with that information.

Geriatric Patients

Healthy elderly volunteers (65 years or over) had a reduced clearance of sildenafil, resulting in approximately 84% and 107% higher plasma concentrations of sildenafil and its active N-desmethyl metabolite, respectively, compared to those seen in healthy younger volunteers (18 to 45 years). Due to age-differences in plasma protein binding, the corresponding increase in the AUC of free (unbound) sildenafil and its active N-desmethyl metabolite were 45% and 57%, respectively.

Renal Impairment

In volunteers with mild (CLcr = 50 to 80 mL/min) and moderate (CLcr = 30 to 49 mL/min) renal impairment, the pharmacokinetics of a single oral dose of sildenafil (50 mg) was not altered. In volunteers with severe (CLcr less than 30 mL/min) renal impairment, sildenafil clearance was reduced, resulting in approximately doubling of AUC and C_{max} compared to age-matched volunteers with no renal impairment. In addition, N-desmethyl metabolite AUC and C_{max} values were significantly increased 200% and 79%, respectively, in patients with severe renal impairment compared to patients with normal renal function.

Hepatic Impairment

In volunteers with mild to moderate hepatic cirrhosis (Child-Pugh class A and B), sildenafil clearance was reduced, resulting in increases in AUC (84%) and C_{max} (47%) compared to age-matched volunteers with no hepatic impairment. Patients with severe hepatic impairment (Child-Pugh class C) have not been studied.

Drug Interaction Studies

In vitro studies

Sildenafil metabolism is principally mediated by the CYP3A (major route) and CYP2C9 (minor route) cytochrome P450 isoforms. Therefore, inhibitors of these isoenzymes may reduce sildenafil clearance and inducers of these isoenzymes may increase sildenafil clearance.

Sildenafil is a weak inhibitor of the cytochrome P450 isoforms 1A2, 2C9, 2C19, 2D6, 2E1 and 3A (IC₅₀ greater than 150 μ M).

Sildenafil is not expected to affect the pharmacokinetics of compounds which are substrates of these CYP enzymes at clinically relevant concentrations.

In vivo studies

The effects of other drugs on sildenafil pharmacokinetics and the effects of sildenafil on the exposure to other drugs are shown in Figure 1 and Figure 2, respectively.

Figure 1. Effects of Other Drugs on Sildenafil Pharmacokinetics

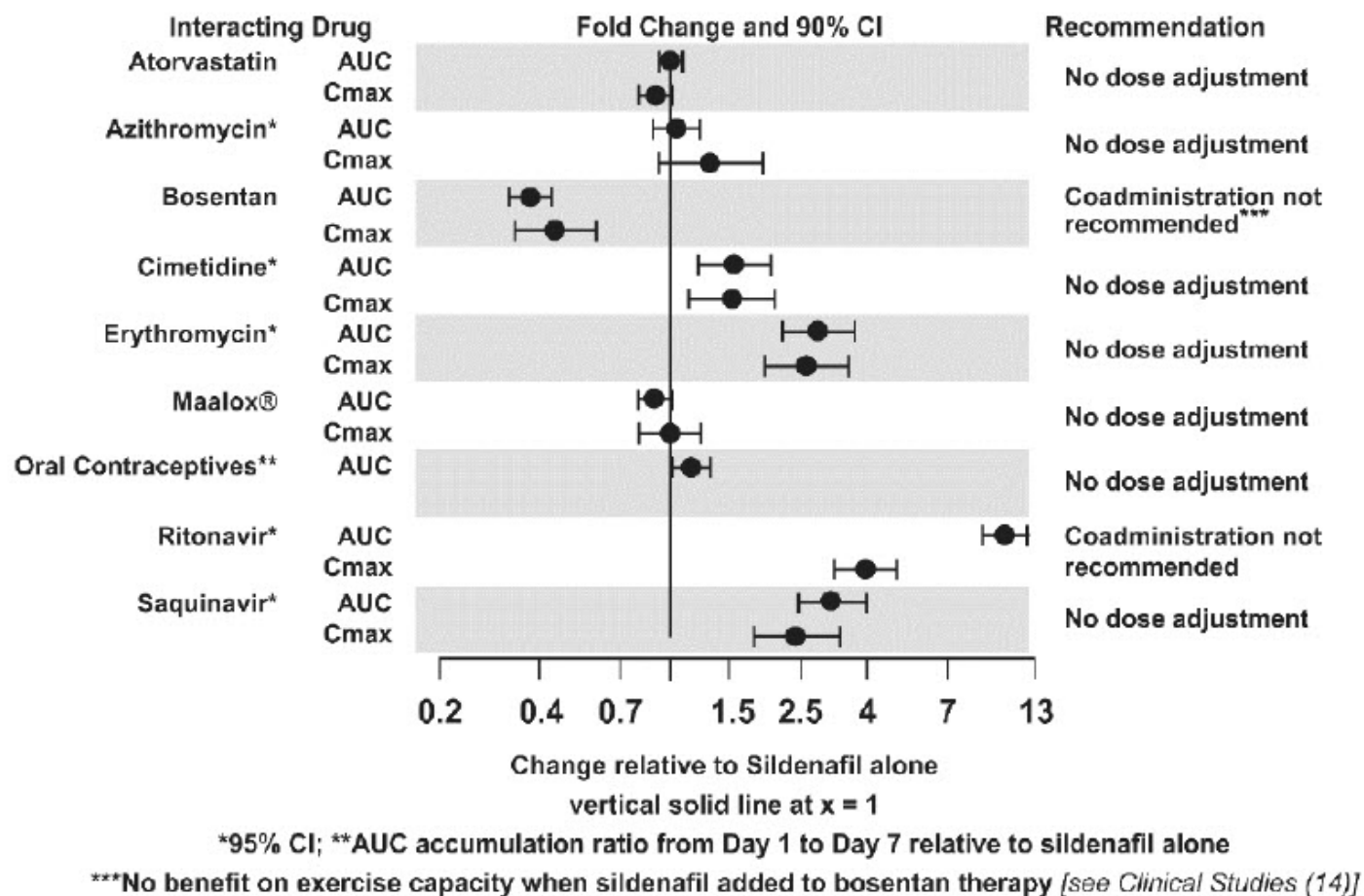
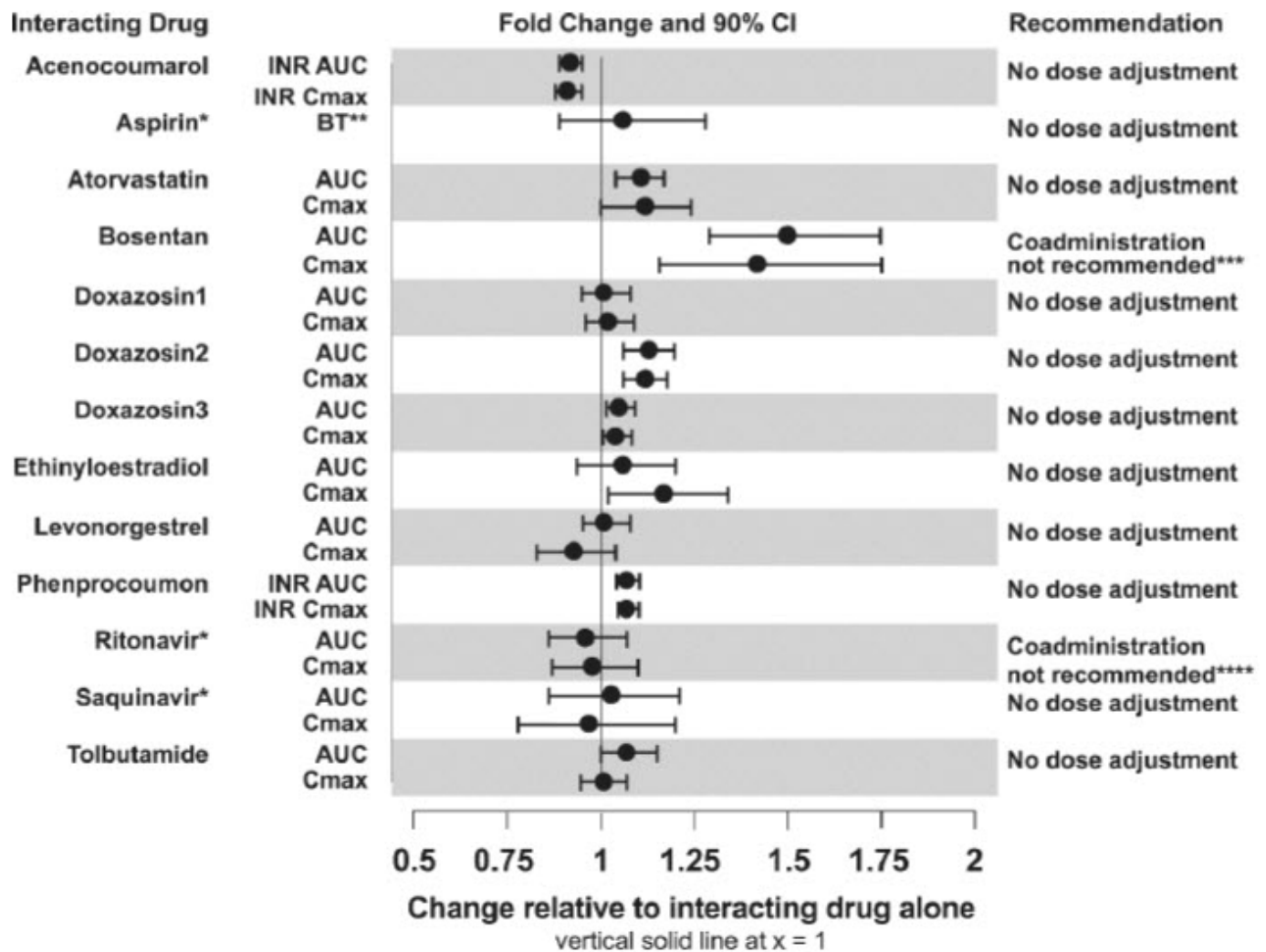


Figure 2. Effects of Sildenafil on Other Drugs



Doxazosin1, 25 mg; 2, 50 mg; and 3, 100 mg sildenafil; *95% CI; **BT = bleeding time

***No benefit on exercise capacity when sildenafil added to bosentan therapy [see Clinical Studies (14)]

****based on the effect of ritonavir on sildenafil PK

CYP3A Inhibitors and Beta Blockers

Population pharmacokinetic analysis of data from patients in clinical trials indicated an approximately 30% reduction in sildenafil clearance when it was co-administered with mild/moderate CYP3A inhibitors and an approximately 34% reductions in sildenafil clearance when co-administered with beta-blockers. Sildenafil exposure at a dose of 80 mg three times a day without concomitant medication is shown to be 5-fold the exposure at a dose of 20 mg three times a day. This concentration range covers the same increased sildenafil exposure observed in specifically-designed drug interaction studies with CYP3A inhibitors (except for potent inhibitors such as ketoconazole, itraconazole, and ritonavir).

CYP3A4 Inducers Including Bosentan

Concomitant administration of strong CYP3A inducers is expected to cause substantial decreases in plasma levels of sildenafil.

Population pharmacokinetic analysis of data from patients in clinical trials indicated approximately 3-fold the sildenafil clearance when it was co-administered with mild CYP3A inducers.

Epoprostenol

The mean reduction of sildenafil (80 mg three times a day) bioavailability when co-administered with epoprostenol was 28%, resulting in about 22% lower mean average steady state concentrations. Therefore, the slight decrease of sildenafil exposure in the presence of epoprostenol is not considered clinically relevant. The effect of sildenafil on epoprostenol pharmacokinetics is not known.

No significant interactions were shown with tolbutamide (250 mg) or warfarin (40 mg), both of which are metabolized by CYP2C9.

Alcohol

Sildenafil (50 mg) did not potentiate the hypotensive effect of alcohol in healthy volunteers with mean maximum blood alcohol levels of 0.08%.

13 NONCLINICAL TOXICOLOGY

13.1 Carcinogenesis, Mutagenesis, Impairment of Fertility

Sildenafil was not carcinogenic when administered to rats for up to 24 months at 60 mg/kg/day, a dose resulting in total systemic exposure (AUC) to unbound sildenafil and its major metabolite 33- and 37-times, for male and female rats, respectively, the human exposure at the RHD of 20 mg three times a day. Sildenafil was not carcinogenic when administered to male and female mice for up to 21 and 18 months, respectively, at doses up to a maximally tolerated level of 10 mg/kg/day, a dose equivalent to the RHD on a mg/m² basis.

Sildenafil was negative in *in vitro* bacterial and Chinese hamster ovary cell assays to detect mutagenicity, and *in vitro* human lymphocytes and *in vivo* mouse micronucleus assays to detect clastogenicity.

There was no impairment of fertility in male or female rats given up to 60 mg sildenafil/kg/day, a dose producing a total systemic exposure (AUC) to unbound sildenafil and its major metabolite of 19- and 38- times for males and females, respectively, the human exposure at the RHD of 20 mg three times a day.

14 CLINICAL STUDIES

SUPER-1 (NCT00644605) - Sildenafil for Oral Suspension monotherapy [20 mg, 40 mg, and 80 mg three times a day]

A randomized, double-blind, placebo-controlled study of Sildenafil for Oral Suspension (SUPER-1) was conducted in 277 patients with PAH (defined as a mean pulmonary artery pressure ≥ 25 mmHg at rest with a pulmonary capillary wedge pressure < 15 mmHg). Patients were predominantly WHO Functional Classes II–III. Allowed background therapy included a combination of anticoagulants, digoxin, calcium channel blockers, diuretics, and oxygen. The use of prostacyclin analogues, endothelin receptor antagonists, and arginine supplementation were not permitted. Patients who had failed to respond to bosentan were also excluded. Patients with left ventricular ejection fraction less than 45% or left ventricular shortening fraction less than 0.2 also were not studied.

Patients were randomized to receive placebo (n=70) or Sildenafil for Oral Suspension 20 mg (n = 69), 40 mg (n = 67) or 80 mg (n = 71) three times a day for a period of 12 weeks. They had either primary pulmonary hypertension (PPH) (63%), PAH associated with CTD (30%), or PAH following surgical repair of left-to-right congenital heart lesions (7%). The study population consisted of 25% men and 75% women with a mean age of 49 years (range: 18 to 81 years) and baseline 6-minute walk distance between 100 and 450 meters (mean 343).

The primary efficacy endpoint was the change from baseline at Week 12 (at least 4 hours after the last dose) in the 6-minute walk distance. Placebo-corrected mean increases in walk distance of 45 to 50 meters were observed with all doses of Sildenafil for Oral Suspension. These increases were significantly different from placebo, but the Sildenafil for Oral Suspension dose groups were not different from each other (see Figure 3), indicating no additional clinical benefit from doses higher than 20 mg three times a day. The improvement in walk distance was apparent after 4 weeks of treatment and was maintained at Week 8 and Week 12.

Figure 3. Change from Baseline in 6-Minute Walk Distance (meters) at Weeks 4, 8, and 12 in SUPER-1: Mean (95% Confidence Interval)

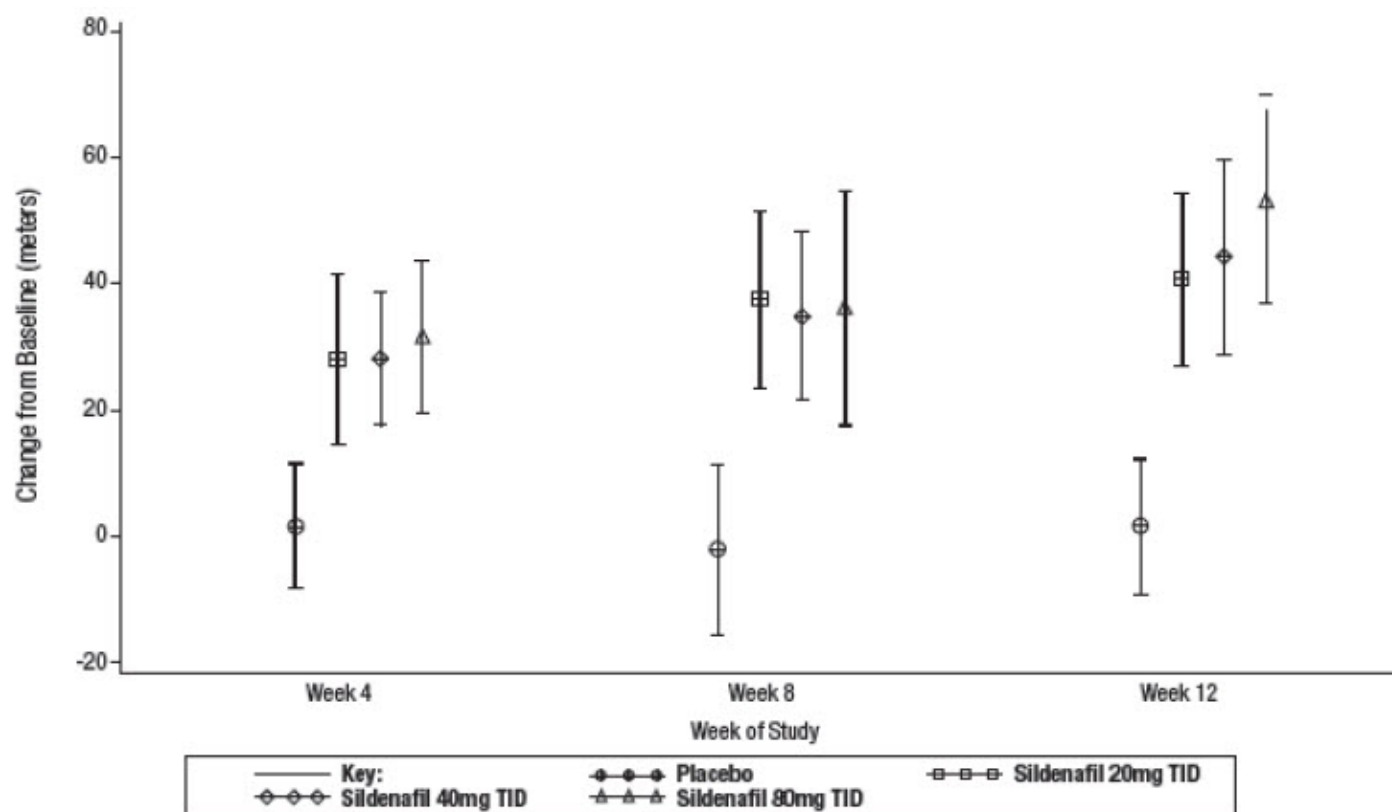
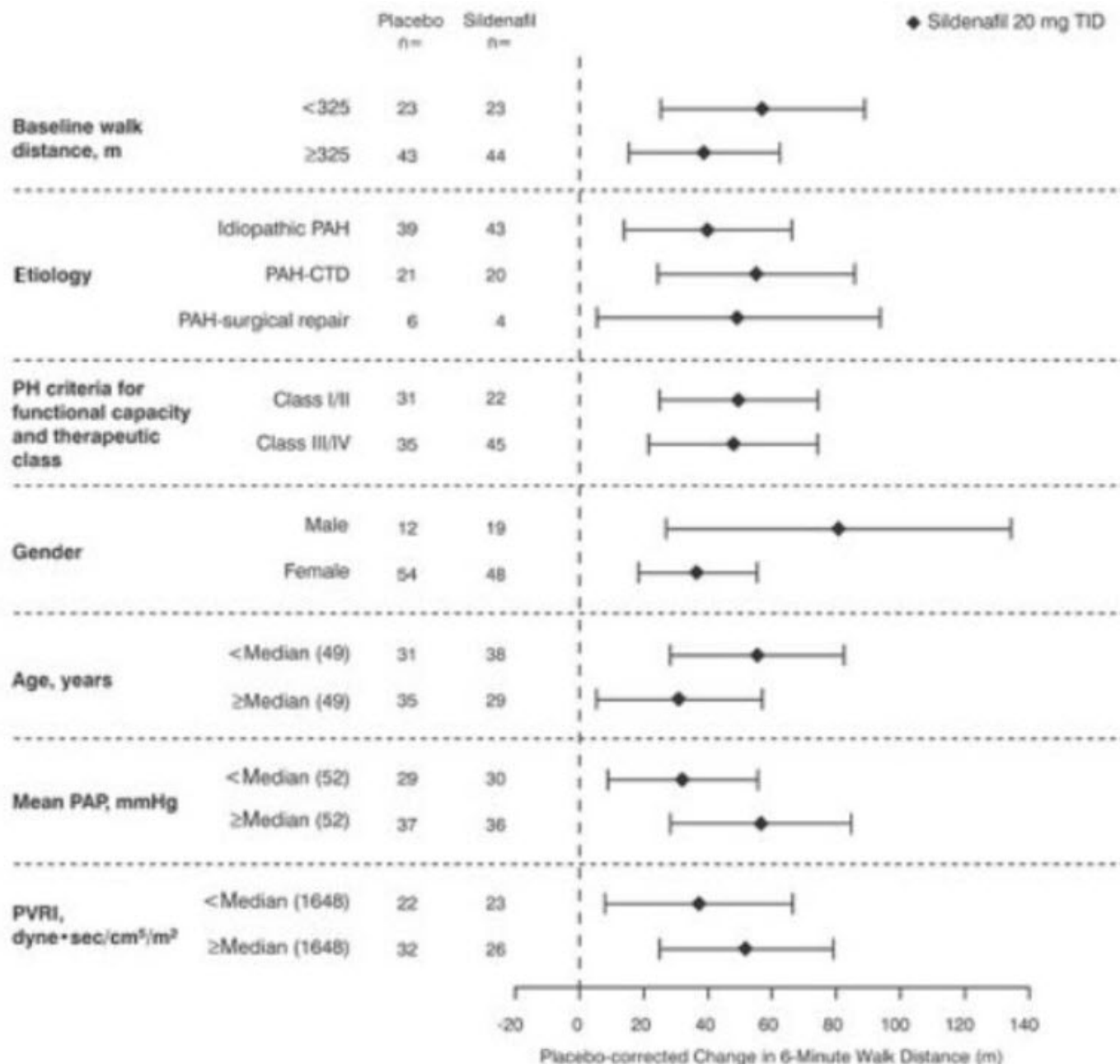


Figure 4 displays subgroup efficacy analyses in SUPER-1 for the change from baseline in 6-Minute Walk Distance at Week 12 including baseline walk distance, disease etiology, functional class, gender, age, and hemodynamic parameters.

Figure 4. Placebo-Corrected Change From Baseline in 6-Minute Walk Distance (meters) at Week 12 by Study Subpopulation in SUPER-1: Mean (95% Confidence Interval)



Key:PAH = pulmonary arterial hypertension; CTD = connective tissue disease; PH = pulmonary hypertension; PAP = pulmonary arterial pressure; PVRI = pulmonary vascular resistance index; TID = three times daily.

SUPER-2 (NCT00159887) Long-term Treatment of PAH

In a long-term follow-up of patients who were treated with sildenafil (n=277), K-M estimates of survival at 1, 2, and 3 years were 94%, 88%, and 79%, respectively. These uncontrolled observations do not allow comparison with a group not given sildenafil and cannot be used to determine the long term-effect of sildenafil on mortality.

PACES-1 (NCT00159861) - Sildenafil for Oral Suspension Co-administered with Epoprostenol

A randomized, double-blind, placebo-controlled study (PACES-1) was conducted in 267 patients with PAH who were taking stable doses of intravenous epoprostenol. Patients

had to have a mean pulmonary artery pressure (mPAP) greater than or equal to 25 mmHg and a pulmonary capillary wedge pressure (PCWP) less than or equal to 15 mmHg at rest via right heart catheterization within 21 days before randomization, and a baseline 6-minute walk test distance greater than or equal to 100 meters and less than or equal to 450 meters (mean 349 meters).

Patients were randomized to placebo or Sildenafil for Oral Suspension (in a fixed titration starting from 20 mg to 40 mg and then 80 mg, three times a day) and all patients continued intravenous epoprostenol therapy.

At baseline patients had PPH (80%) or PAH secondary to CTD (20%); WHO Functional Class I (1%), II (26%), III (67%), or IV (6%); and the mean age was 48 years, 80% were female, and 79% were Caucasian.

There was a statistically significant greater increase from baseline in 6-minute walk distance at Week 16 (primary endpoint) for the Sildenafil for Oral Suspension group compared with the placebo group. The mean change from baseline at Week 16 (last observation carried forward) was 30 meters for the Sildenafil for Oral Suspension group compared with 4 meters for the placebo group giving an adjusted treatment difference of 26 meters (95% CI: 10.8, 41.2) ($p = 0.0009$).

Patients on Sildenafil for Oral Suspension achieved a statistically significant reduction in mPAP compared to those on placebo. A mean placebo-corrected treatment effect of -3.9 mmHg was observed in favor of Sildenafil for Oral Suspension (95% CI: -5.7, -2.1) ($p = 0.00003$).

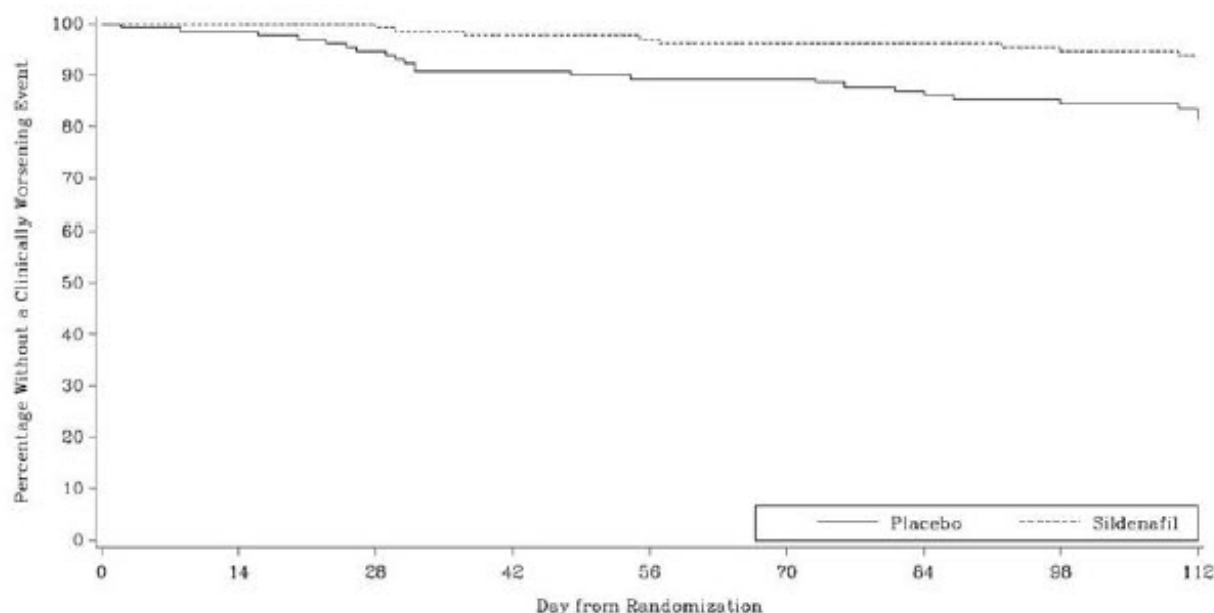
Time to clinical worsening of PAH was defined as the time from randomization to the first occurrence of a clinical worsening event (death, lung transplantation, initiation of bosentan therapy, or clinical deterioration requiring a change in epoprostenol therapy). Table 4 displays the number of patients with clinical worsening events in PACES-1. Kaplan-Meier estimates and a stratified log-rank test demonstrated that placebo-treated patients were 3 times more likely to experience a clinical worsening event than sildenafil-treated patients and that sildenafil-treated patients experienced a significant delay in time to clinical worsening versus placebo-treated patients ($p = 0.0074$). Kaplan-Meier plot of time to clinical worsening is presented in Figure 5.

Table 4. Clinical Worsening Events in PACES-1

	Placebo (N = 131)		Sildenafil for Oral Suspension (N = 134)	
Number of patients with clinical worsening first event	23		8	
	First Event	All Events	First Event	All Events
Death, n	3	4	0	0
Lung transplantation, n	1	1	0	0
Hospitalization due to PAH, n	9	11	8	8
Clinical deterioration resulting in:				
Change of Epoprostenol	0	16	0	7

Dose, n	5	10	0	2
Initiation of Bosentan, n	1	1	0	0
Proportion worsened	0.187		0.062	
95% Confidence Interval	(0.12 to 0.26)		(0.02 to 0.10)	

Figure 5. Kaplan-Meier Plot of Time (in Days) to Clinical Worsening of PAH in PACES-1



Improvements in WHO Functional Class for PAH were also demonstrated in patients on Sildenafil for Oral Suspension compared to placebo. More than twice as many sildenafil-treated patients (36%) as placebo-treated patients (14%) showed an improvement in at least one functional New York Heart Association (NYHA) class for PAH.

Study A1481243 (NCT00323297) - Sildenafil for Oral Suspension Added to Bosentan Therapy - Lack of Effect on Exercise Capacity

A randomized, double-blind, placebo-controlled study was conducted in 103 patients with PAH who were on bosentan therapy for a minimum of 3 months. The PAH patients included those with primary PAH and PAH associated with CTD. Patients were randomized to placebo or sildenafil (20 mg three times a day) in combination with bosentan (62.5 to 125 mg twice a day). The primary efficacy endpoint was the change from baseline at Week 12 in 6-minute walk distance (6MWD). The results indicate that there is no significant difference in mean change from baseline on 6MWD observed between sildenafil 20 mg plus bosentan and bosentan alone.

Pediatric use information is approved for Viartis Specialty LLC's REVATIO[®] (sildenafil) product. However, due to Viartis Specialty LLC's marketing exclusivity rights, this drug product is not labeled with that information.

16 HOW SUPPLIED/STORAGE AND HANDLING

Sildenafil powder for oral suspension is supplied in amber glass bottles. Each bottle contains white to off-white powders containing 1.57 g of sildenafil citrate (equivalent to 1.12 g sildenafil). Following reconstitution, the total volume of the oral suspension is 112

mL (10 mg sildenafil/mL). A 2 mL oral dosing syringe (with 0.5 mL and 2 mL dose markings) and a press-in bottle adaptor are also provided.

Sildenafil Powder for Oral Suspension

Package Configuration	Strength	NDC
Powder for oral suspension – Bottle	10 mg/mL (when reconstituted)	NDC 51672-4231-8

Recommended storage for Sildenafil for Oral Suspension: Store below 30°C (86°F) in the original package in order to protect from moisture.

Recommended storage for reconstituted oral suspension: Store below 30°C (86°F) or in refrigerator at 2°C to 8°C (36°F to 46°F). Do not freeze. The shelf-life of the reconstituted oral suspension is 60 days. Any remaining oral suspension should be discarded 60 days after reconstitution.

17 PATIENT COUNSELING INFORMATION

Advise the patient to read the FDA-approved patient labeling (Patient Information and Instructions for Use).

- Inform patients of contraindication of Sildenafil for Oral Suspension with regular and/or intermittent use of organic nitrates.
- Inform patients that sildenafil is also marketed as VIAGRA for erectile dysfunction. Advise patients taking Sildenafil for Oral Suspension not to take VIAGRA or other PDE-5 inhibitors.
- Advise patients to seek immediate medical attention for a sudden loss of vision in one or both eyes while taking Sildenafil for Oral Suspension. Such an event may be a sign of NAION.
- Advise patients to seek prompt medical attention in the event of sudden decrease or loss of hearing while taking Sildenafil for Oral Suspension. These events may be accompanied by tinnitus and dizziness.

Mfd. by: Taro Pharmaceutical Industries Ltd.
Haifa Bay, Israel 2624761
Dist. by: **Taro Pharmaceuticals U.S.A., Inc.**
Hawthorne, NY 10532
Revised: December 2023

PATIENT INFORMATION Sildenafil (sil den \square a fil) for Oral Suspension
What is the most important information I should know about Sildenafil for Oral Suspension? Never take Sildenafil for Oral Suspension with any nitrate or guanylate cyclase stimulator medicines. <ul style="list-style-type: none">• Your blood pressure could drop quickly to an unsafe level. Nitrates include:

- Medicines that treat chest pain (angina)
- Nitroglycerin in any form including tablets, patches, sprays, and ointments
- Isosorbide mononitrate or dinitrate
- Street drugs called "poppers" (amyl nitrate, butyl nitrate or nitrite)

Guanylate cyclase stimulators include:

- Riociguat, a medicine that treats pulmonary arterial hypertension and chronic thromboembolic pulmonary hypertension.

Ask your healthcare provider or pharmacist if you are not sure if you are taking a nitrate or a guanylate cyclase stimulator medicine.

See "**What are the possible side effects of Sildenafil for Oral Suspension?**" for more information about side effects.

What is Sildenafil for Oral Suspension?

Sildenafil for Oral Suspension is a prescription medicine used to treat pulmonary arterial hypertension (PAH). PAH is a type of high blood pressure in the arteries of your lungs. Sildenafil for Oral Suspension may be used in:

- adults to improve your ability to exercise and help slow down the worsening of your physical condition.

It is not known if Sildenafil for Oral Suspension is safe and effective in children younger than 1 year of age.

Do not take Sildenafil for Oral Suspension if you:

- take medicines called nitrates.
- take riociguat, a guanylate cyclase stimulator medicine.
- are allergic to sildenafil or any of the ingredients in Sildenafil for Oral Suspension. See the end of this leaflet for a complete list of ingredients in Sildenafil for Oral Suspension.

Before taking Sildenafil for Oral Suspension, tell your healthcare provider about all of your medical conditions, including if you:

- have low blood pressure
- have heart problems
- have pulmonary veno-occlusive disease (PVOD)
- have bleeding problems or a stomach (peptic) ulcer. It is not known if Sildenafil for Oral Suspension is safe in people with bleeding problems or who have a stomach ulcer.
- have an eye problem called retinitis pigmentosa
- have ever had sudden loss of vision in one or both eyes, including an eye problem called non-arteritic anterior ischemic optic neuropathy (NAION)
- have ever had hearing problems such as ringing in the ears, dizziness, or loss of hearing
- have a deformed penis shape or Peyronie's disease
- have any blood cell problems such as sickle cell anemia
- are pregnant or plan to become pregnant. It is not known if Sildenafil for Oral Suspension will harm your unborn baby.
- are breastfeeding or plan to breastfeed. Sildenafil passes into your breast milk. It is not known if it can harm your baby. Talk with your healthcare provider about the best way to feed your baby during treatment with Sildenafil for Oral Suspension

Tell your healthcare provider about all of the medicines you take, including prescription and over-the-counter medicines, vitamins, and herbal supplements. Sildenafil for Oral Suspension and certain other medicines may affect each other and can cause side effects.

Especially tell your healthcare provider if you take:

- nitrates or guanylate cyclase stimulators. See "**What is the most important information I should know about Sildenafil for Oral Suspension?**"
- medicines to treat high blood pressure
- medicines for erectile dysfunction (impotence). Sildenafil for Oral Suspension contains sildenafil, which is the same medicine found in another medicine called VIAGRA[®]. VIAGRA is used for the treatment of erectile dysfunction. **Do not** take VIAGRA or other PDE-5 inhibitors during treatment with Sildenafil for Oral Suspension.

Ask your healthcare provider or pharmacist for a list of these medicines if you are not sure.

Know the medicines you take. Keep a list of your medicines and show it to your healthcare provider and pharmacist when you get a new medicine.

How should I take Sildenafil for Oral Suspension?

- Take or give Sildenafil for Oral Suspension exactly as your healthcare provider tells you.
- Your healthcare provider may change your dose of Sildenafil for Oral Suspension as needed. Do not change your dose or stop taking Sildenafil for Oral Suspension without talking to your healthcare provider.
- Sildenafil may be prescribed to you as Sildenafil for Oral Suspension.
- Take your prescribed dose of Sildenafil for Oral Suspension 3 times a day.
- **See the detailed Instructions for Use that comes with Sildenafil for Oral Suspension for information on how to take or give sildenafil for oral suspension.** Sildenafil for Oral Suspension will be mixed for you by your pharmacist. Do not mix Sildenafil for Oral Suspension with other medicine or flavoring.
- If you take too much Sildenafil for Oral Suspension, call your healthcare provider or go to the nearest hospital emergency room right away.

What are the possible side effects of Sildenafil for Oral Suspension?

Sildenafil for Oral Suspension may cause serious side effects, including:

- See "**What is the most important information I should know about Sildenafil for Oral Suspension?**"
- **Decreased blood pressure.** Sildenafil for Oral Suspension may cause low blood pressure that last for a short time. If you take medicines to treat high blood pressure, your healthcare provider should monitor your blood pressure during treatment with Sildenafil for Oral Suspension.
- **Decreased eyesight or permanent loss of vision in one or both eyes** can be a sign of non-arteritic anterior ischemic optic neuropathy (NAION). Most people who develop NAION have certain risk factors. You can ask your healthcare provider if you have questions about risk factors for NAION. If you notice a sudden decrease or loss of vision in one or both eyes during treatment with Sildenafil for Oral Suspension, contact your healthcare provider right away.
- **Sudden decrease or loss of hearing**, sometimes with ringing in the ears and dizziness. If you notice a sudden decrease or loss of hearing during treatment with

Sildenafil for Oral Suspension, contact your healthcare provider right away.

- **In men, an erection that lasts for more than 4 hours (priapism).** If you have an erection, with or without pain, that lasts more than 4 hours, contact your healthcare provider or get emergency medical help right away. A painful erection that lasts more than 6 hours must be treated right away or you can have lasting damage to your penis, including the inability to have erections.

The most common side effects of Sildenafil for Oral Suspension in adults include:

- nosebleeds
- headache
- upset stomach
- getting red or hot in the face (flushing)
- arm or leg pain
- muscle aches and pain
- back pain
- diarrhea

These are not all the possible side effects of Sildenafil for Oral Suspension.

Call your doctor for medical advice about side effects. You may report side effects to FDA at 1-800-FDA-1088.

How should I store Sildenafil for Oral Suspension?

- Store mixed (reconstituted) Sildenafil for Oral Suspension below 86°F (30°C) or in a refrigerator between 36°F to 46°F (2°C to 8°C).
- Do not freeze mixed Sildenafil for Oral Suspension.
- Throw away (discard) any remaining Sildenafil for Oral Suspension 60 days after mixed by the pharmacist. See the "Discard after" date written on the bottle label.

Keep Sildenafil for Oral Suspension and all medicines out of the reach of children.

General information about the safe and effective use of Sildenafil for Oral Suspension

Medicines are sometimes prescribed for purposes other than those listed in a Patient Information leaflet. Do not use Sildenafil for Oral Suspension for a condition for which it was not prescribed. Do not give Sildenafil for Oral Suspension to other people, even if they have the same symptoms that you have. It may harm them. You can ask your healthcare provider or pharmacist for information about Sildenafil for Oral Suspension that is written for health professionals.

What are the ingredients in Sildenafil for Oral Suspension?

Active ingredient: sildenafil citrate

Inactive ingredients: citric acid anhydrous, colloidal silicon dioxide, grape flavor, sodium benzoate, sodium citrate dihydrate, sorbitol, sucralose, titanium dioxide, and xanthan gum

Pediatric use information is approved for Viatris Specialty LLC's REVATIO[®] (sildenafil) product. However, due to Viatris Specialty LLC's marketing exclusivity rights, this drug product is not labeled with that information.

Mfd. by: Taro Pharmaceutical Industries Ltd.

Haifa Bay, Israel 2624761

Dist. by: **Taro Pharmaceuticals U.S.A., Inc.**

Hawthorne, NY 10532

Revised: December 2023

All trademarks are the property of their respective owners.

For more information go to www.taro.com or call 1-866-923-4914.

This Patient Information has been approved by the U.S. Food and Drug Administration.

Instructions for Use

Sildenafil (sil den \square a fil)

Oral Suspension

Read this Instructions for Use before you start taking sildenafil oral suspension and each time you get a refill. There may be new information. This information does not take the place of talking to your healthcare provider about your medical condition or treatment.

Important information:

- Ask your healthcare provider or pharmacist to show you how to measure and take your prescribed dose of sildenafil oral suspension.
- Your pharmacist will mix (reconstitute) sildenafil oral suspension before it is given to you. **Do not** take or give sildenafil oral suspension and contact your pharmacist if the medicine in the bottle is still a powder.
- Always use the oral dosing syringe that comes with sildenafil oral suspension. If your carton does not come with an oral dosing syringe, contact your pharmacist.
- Do not take or give sildenafil oral suspension if the bottle adaptor is not in the bottle. If the bottle adaptor is not in the bottle, contact your pharmacist.
- Sildenafil oral suspension should not be mixed with any other medicine or flavoring.

Supplies you will need to take or give a dose of sildenafil oral suspension (See Figure A):

- 1 bottle of sildenafil oral suspension with pre-inserted bottle adaptor
- 1 oral dosing syringe (provided in the carton)

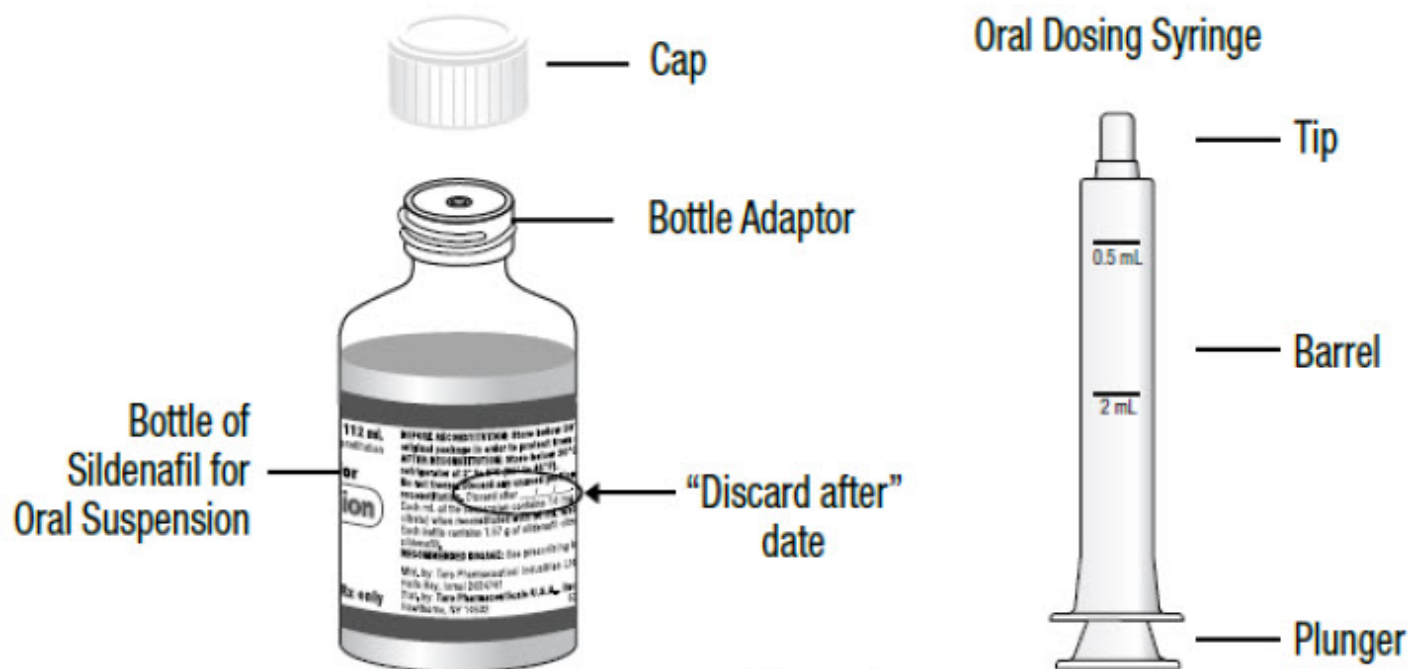
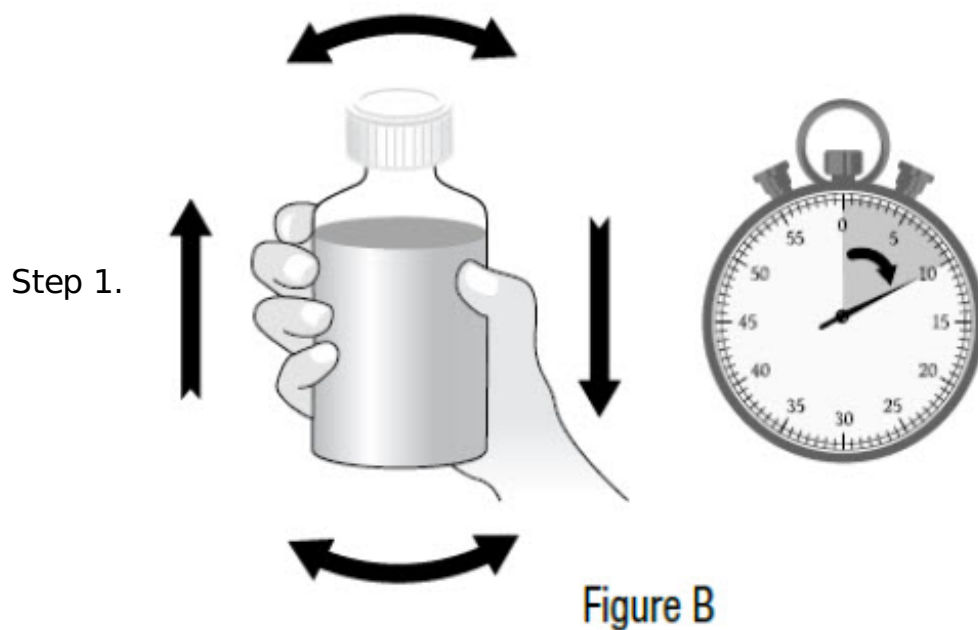
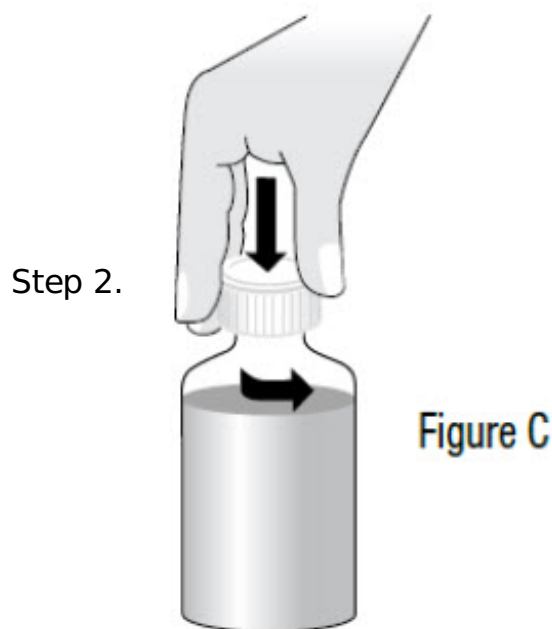


Figure A

Shake the bottle of sildenafil oral suspension for 10 seconds before each use.
(See Figure B)



Remove the cap. Open the bottle by pushing down on the cap and twisting it in the direction of the arrow (counter-clockwise). (See Figure C)



Fully push down (depress) the plunger of the oral dosing syringe. Then insert the tip of the oral dosing syringe into the bottle adaptor while holding the bottle upright, on a flat surface. (See Figure D)

Step 3.

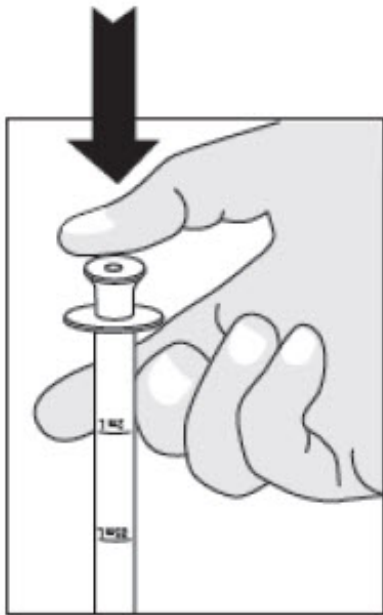
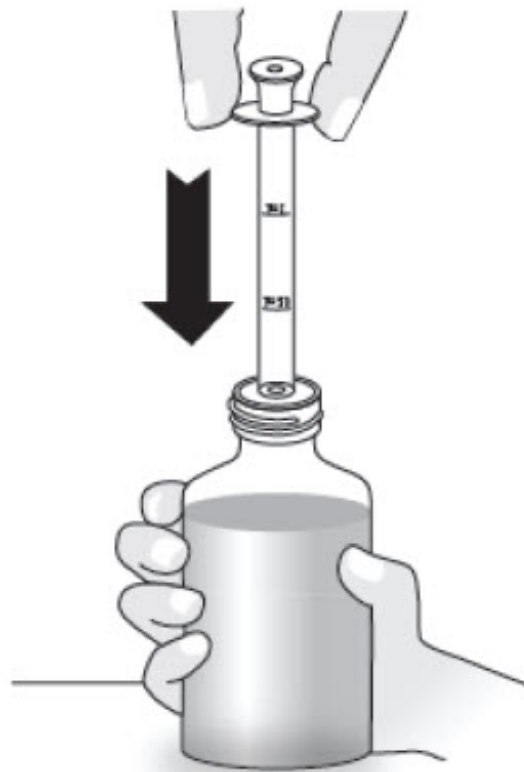


Figure D



Turn the bottle upside down while holding the oral dosing syringe in place. Slowly pull back the plunger of the oral dosing syringe until the bottom of the plunger is even with the mL marking on the syringe for your prescribed dose. (See Figure E)

If your dose of sildenafil oral suspension is 1 mL (10 mg), measure 0.5 mL two times for a total of 1 mL of sildenafil oral suspension.

If your dose of sildenafil oral suspension is more than 2 mL (20 mg), you will need to divide the dose. Follow the instructions given to you by your healthcare provider or pharmacist about how to prepare the divided dose.

If you see air bubbles in the oral dosing syringe, slowly push the plunger all the way up so that sildenafil oral suspension flows back into the bottle and repeat Step 4.

Step 4.

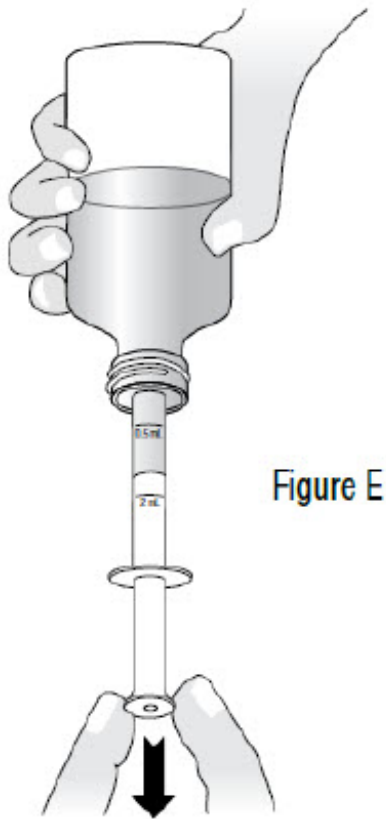


Figure E

Turn the bottle back upright with the oral dosing syringe still in place. Place the bottle on a flat surface. Remove the oral dosing syringe from the bottle adaptor by pulling straight up on the barrel of the oral dosing syringe. (See Figure F) **Do not press on the plunger of the oral dosing syringe at this time.**

Step 5.

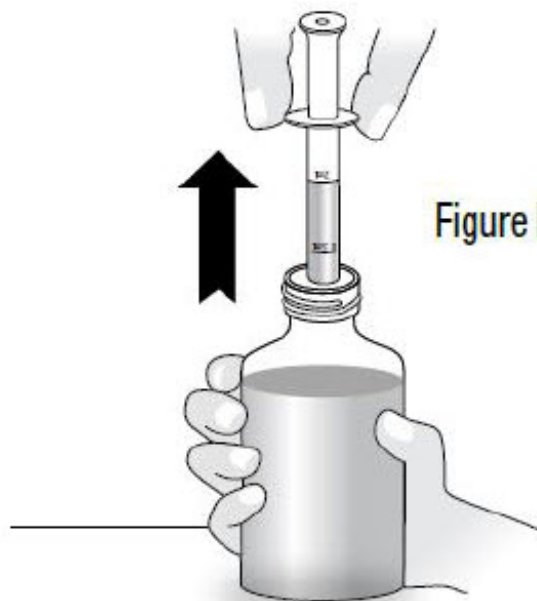
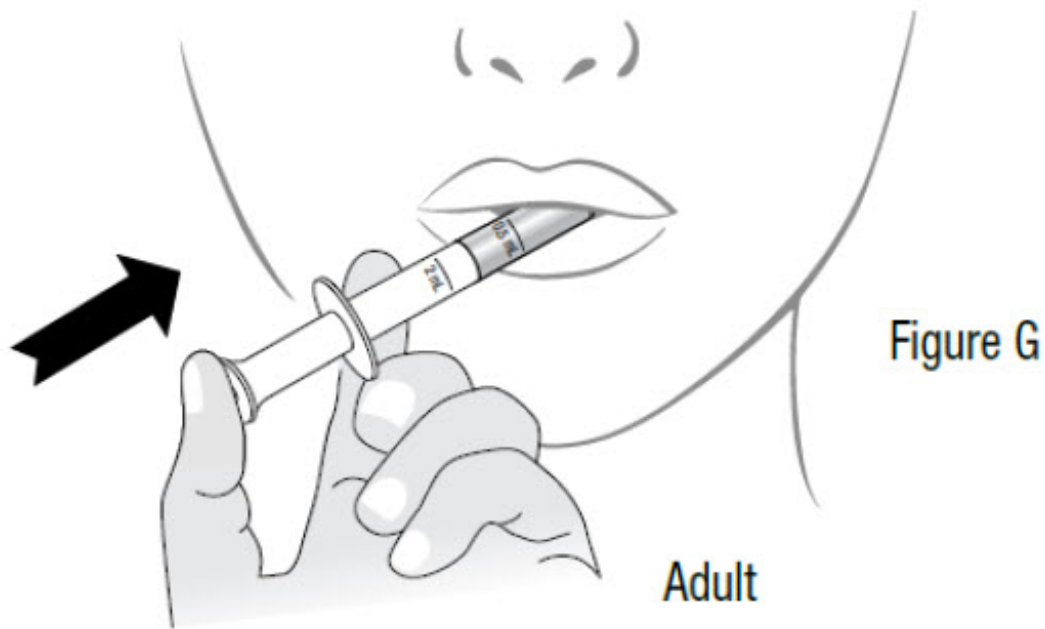


Figure F

Put the tip of the oral dosing syringe into your mouth and point it towards the inside of the cheek. Slowly push the plunger of the oral dosing syringe all the way down to give the entire dose. Do not squirt the medicine out quickly. (See Figure G)

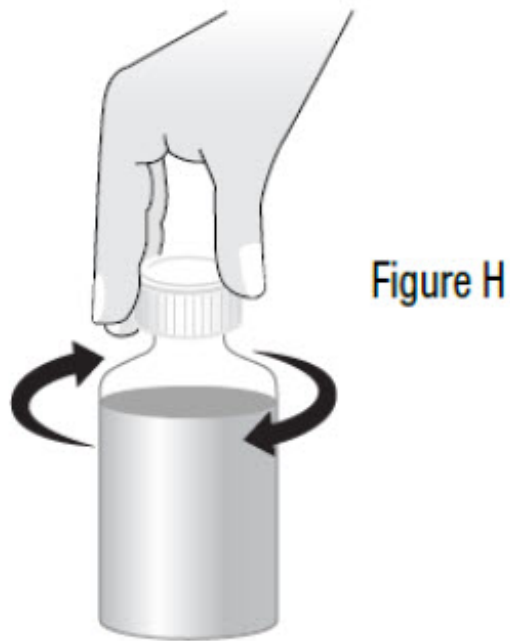
If you are giving sildenafil oral suspension, make sure they are in an upright position before giving the medicine.

Step 6.



Replace the cap on the bottle, leaving the bottle adaptor in place. Turn the cap in the direction of the arrow (clockwise) to close the bottle. (See Figure H)

Step 7.



Wash the oral dosing syringe after each use. Pull the plunger out of the barrel and rinse both parts with water. (See Figure I)

Step 8.

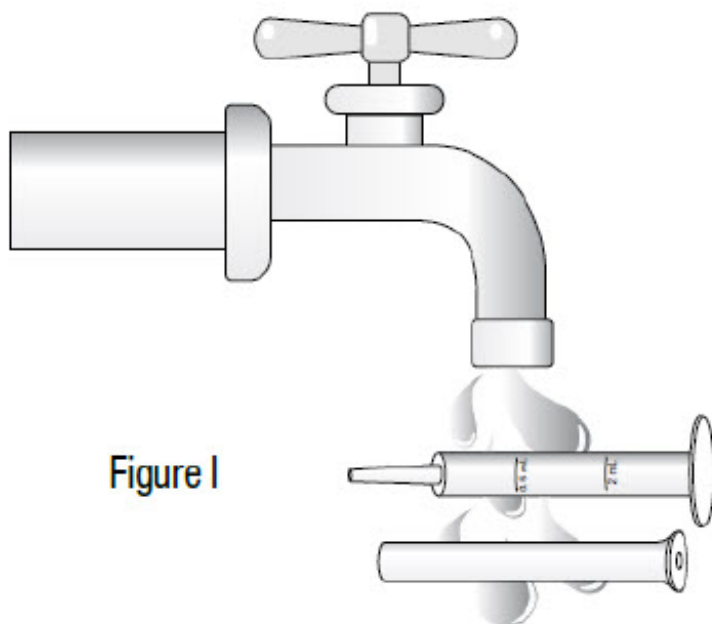


Figure I

Step 9. Dry all parts with a clean paper towel. Push the plunger back into the barrel. Store the oral dosing syringe with the sildenafil oral suspension bottle.

How should I store sildenafil oral suspension?

- Store mixed (reconstituted) sildenafil oral suspension below 86°F (30°C) or in a refrigerator between 36°F to 46°F (2°C to 8°C).
- Do not freeze mixed sildenafil oral suspension
- Throw away (discard) any remaining sildenafil oral suspension 60 days after mixed by the pharmacist. See the "Discard after" date written on the bottle label.

Keep sildenafil oral suspension and all medicines out of the reach of children.

Pediatric use information is approved for Viatris Specialty LLC's REVATIO[®] (sildenafil) product. However, due to Viatris Specialty LLC's marketing exclusivity rights, this drug product is not labeled with that information.

Mfd. by: Taro Pharmaceutical Industries Ltd.

Haifa Bay, Israel 2624761

Dist. by: **Taro Pharmaceuticals U.S.A., Inc.** Hawthorne, NY 10532

This Instruction for Use has been approved by the U.S. Food and Drug Administration.

Revised: December 2023

PRINCIPAL DISPLAY PANEL - 112 mL Bottle Carton

112 mL

following Reconstitution

NDC 51672-4231-8

Sildenafil for

Oral Suspension

10 mg/mL

For Oral Use Only

Shake Well Before Each Use

Grape Flavored

Rx only

TARO



SILDENAFIL

sildenafil citrate powder, for suspension

Product Information

Product Type	HUMAN PRESCRIPTION DRUG	Item Code (Source)	NDC:51672-4231
Route of Administration	ORAL		

Active Ingredient/Active Moiety

Ingredient Name	Basis of Strength	Strength
SILDENAFIL CITRATE (UNII: BW9B0ZE037) (SILDENAFIL - UNII:3M7OB98Y7H)	SILDENAFIL	10 mg in 1 mL

Inactive Ingredients

Ingredient Name	Strength
ANHYDROUS CITRIC ACID (UNII: XF417D3PSL)	
SILICON DIOXIDE (UNII: ETJ7Z6XBU4)	
SODIUM BENZOATE (UNII: OJ245FE5EU)	
TRISODIUM CITRATE DIHYDRATE (UNII: B22547B95K)	
SORBITOL (UNII: 506T60A25R)	
SUCRALOSE (UNII: 96K6UQ3ZD4)	
TITANIUM DIOXIDE (UNII: 15FIX9V2JP)	
XANTHAN GUM (UNII: TTV12P4NEE)	

Product Characteristics

Color	white (white to off-white)	Score	
Shape		Size	
Flavor	GRAPE	Imprint Code	
Contains			

Packaging

#	Item Code	Package Description	Marketing Start Date	Marketing End Date
1	NDC:51672-4231-8	1 in 1 CARTON	11/16/2021	
1		112 mL in 1 BOTTLE; Type 0: Not a Combination Product		

Marketing Information

Marketing Category	Application Number or Monograph Citation	Marketing Start Date	Marketing End Date
ANDA	ANDA215522	11/16/2021	

Labeler - Taro Pharmaceuticals U.S.A. Inc. (145186370)

Establishment

Name	Address	ID/FEI	Business Operations
------	---------	--------	---------------------

Taro Pharmaceutical Industries, Ltd.		600072078	manufacture(51672-4231)
--------------------------------------	--	-----------	-------------------------

Revised: 12/2023

Taro Pharmaceuticals U.S.A. Inc.