

SOLMEET- rosin powder, dentifrice
SOLM Co., Ltd.

Disclaimer: This drug has not been found by FDA to be safe and effective, and this labeling has not been approved by FDA. For further information about unapproved drugs, [click here](#).

Rosin

Sodium chloride

for dental care

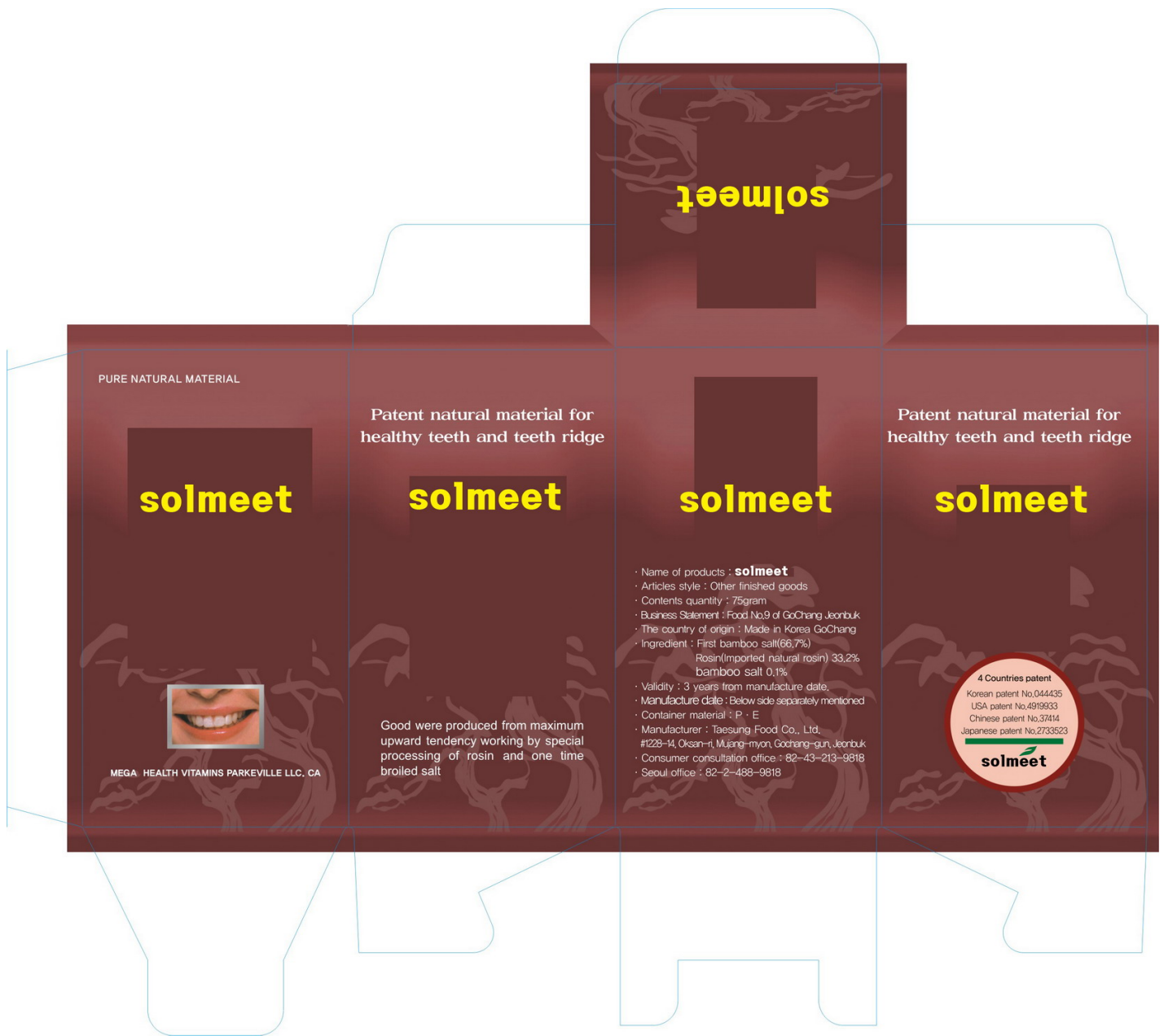
keep out of reach of the children

use when is needed

- do not swallow when using this product

- if more than used for rinsing is accidentally swallowed, get medical helps or contact a poison control center right away

Hold 1 grams in mouth for 1~2 minutes then rinse out with water



SOLMEET

rosin powder, dentifrice

Product Information

Product Type	HUMAN OTC DRUG	Item Code (Source)	NDC:70706-1002
Route of Administration	DENTAL		

Active Ingredient/Active Moiety

Ingredient Name	Basis of Strength	Strength
ROSIN (UNII: 88S87KL877) (ROSIN - UNII:88S87KL877)	ROSIN	0.332 in 100 g

Inactive Ingredients

Ingredient Name	Strength
-----------------	----------

SODIUM CHLORIDE (UNII: 451W47IQ8X)

Packaging

#	Item Code	Package Description	Marketing Start Date	Marketing End Date
1	NDC:70706-1002-1	75 g in 1 PACKAGE; Type 0: Not a Combination Product	05/12/2016	
2	NDC:70706-1002-2	60 g in 1 PACKAGE; Type 0: Not a Combination Product	12/24/2018	

Marketing Information

Marketing Category	Application Number or Monograph Citation	Marketing Start Date	Marketing End Date
unapproved drug other		05/12/2016	

Labeler - SOLM Co., Ltd. (689847034)

Registrant - SOLM Co., Ltd. (689847034)

Establishment

Name	Address	ID/FEI	Business Operations
SOLM Co., Ltd.		689847034	manufacture(70706-1002)

Revised: 12/2019

SOLM Co., Ltd.