

COLGATE SENSITIVE PREVENT AND REPAIR- potassium nitrate and sodium fluoride paste, dentifrice
Colgate-Palmolive Company

Colgate® Sensitive Prevent & Repair

Drug Facts

<i>Active ingredients</i>	<i>Purpose</i>
Potassium Nitrate 5%	Antisensitivity
Sodium Fluoride 0.24% (0.14% w/v fluoride ion)	Anticavity

Uses

- builds increasing protection against painful sensitivity of the teeth to cold, heat, acids, sweets or contact
- helps protect against cavities

Warnings

When using this product, if pain/sensitivity still persists after 4 weeks of use, please visit your dentist.

Stop use and ask a dentist if the problem persists or worsens. Sensitive teeth may indicate a serious problem that may need prompt care by a dentist.

Keep out of reach of children. If more than used for brushing is accidentally swallowed, get medical help or contact a Poison Control Center right away.

Directions

adults and children 12 years of age and older	apply at least a 1-inch strip of the product onto a soft bristle toothbrush. Brush teeth thoroughly for at least 1 minute twice a day (morning and evening) or as recommended by a dentist or physician. Make sure to brush all sensitive areas of the teeth.
children under 12 years	consult a dentist or physician

Inactive ingredients

Water, Glycerin, Hydrated Silica, Sorbitol, PEG-12, PVM/MA Copolymer, Sodium Lauryl Sulfate, Flavor, Trisodium Phosphate, Poloxamer 407, Sodium Hydroxide, Sodium Saccharin, Cellulose Gum, Xanthan Gum, Titanium Dioxide.

Questions?

1-800-468-6502

Dist. by:

COLGATE-PALMOLIVE COMPANY

New York, NY 10022 U.S.A.

PRINCIPAL DISPLAY PANEL - 170 g Tube Carton

Colgate®

Anticavity Toothpaste for Sensitive Teeth

Recyclable

Tube

ADVANCED DUAL ACTION FORMULA

HELPS ✓ PREVENT SENSITIVITY ✓ REPAIR WEAKENED ENAMEL

MAXIMUM STRENGTH*

Sensitive

PREVENT & REPAIR

+ WHITENING

NET WT 6.0 OZ (170 g)

GENTLE MINT

paste

Colgate®

Anticavity Toothpaste for Sensitive Teeth

MAXIMUM STRENGTH®

Sensitive

PREVENT & REPAIR

• WHITENING

NET WT 6.0 OZ (170 g)

GENTLE MINT

paste



ADVANCED DUAL ACTION FORMULA
HELPS ✓ PREVENT SENSITIVITY ✓ REPAIR WEAKENED ENAMEL



Colgate®

Anticavity Toothpaste for Sensitive Teeth

MAXIMUM STRENGTH®

Sensitive

PREVENT & REPAIR

• WHITENING

NET WT 6.0 OZ (170 g)

GENTLE MINT

paste



ADVANCED DUAL ACTION FORMULA
HELPS ✓ PREVENT SENSITIVITY ✓ REPAIR WEAKENED ENAMEL



Drug Facts

Active ingredients

Potassium Nitrate 5%.....Antisensitivity
Sodium Fluoride 0.24% (0.14% w/v fluoride ion).....Anticavity

Purpose

Uses • builds increasing protection against painful sensitivity of the teeth to cold, heat, acids, sweets or contact • helps protect against cavities

Warnings

When using this product, if pain/sensitivity still persists after 4 weeks of use, please visit your dentist. Stop use and ask a dentist if the problem persists or worsens. Sensitive teeth may indicate a serious problem that may need prompt care by a dentist.

Keep out of reach of children. If more than used for brushing is accidentally swallowed, get medical help or contact a Poison Control Center right away.

Drug Facts (continued)

Directions

adults and children 12 years of age and older

apply at least a 1-inch strip of the product onto a soft bristle toothbrush. Brush teeth thoroughly for at least 1 minute twice a day (morning and evening) or as recommended by a dentist or physician. Make sure to brush all sensitive areas of the teeth.

children under 12 years

consult a dentist or physician

Inactive ingredients

Water, Glycerin, Hydrated Silica, Sorbitol, PEG-12, PVM/MA Copolymer, Sodium Lauryl Sulfate, Flavor, Trisodium Phosphate, Poloxamer 407, Sodium Hydroxide, Sodium Saccharin, Cellulose Gum, Xanthan Gum, Titanium Dioxide.

Questions? 1-800-468-6502

Recyclable Tube

Learn more about our recyclable tube at colgate.com/goodies

SAVE WATER

turn off the tap while brushing

Dist. by: COLGATE-PALMOLIVE COMPANY

New York, NY 10022 U.S.A.

www.colgatehealthcare.com

Colgate®

Sensitive

PREVENT & REPAIR

• WHITENING

Where does sensitive tooth pain come from?

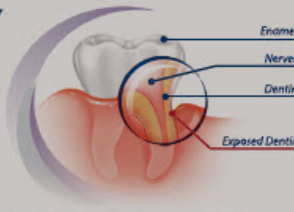
Receding gums and damage to your enamel can expose thousands of microscopic channels which lead to your tooth's nerve center. When your teeth make contact with something hot, cold, or sweet, sensations are carried down these channels directly to the nerves, causing pain.

The advanced dual action formula of Colgate® Sensitive Prevent & Repair

✓ **Helps prevent painful sensitivity** with a clinically proven formula

✓ **Helps repair weakened parts of sensitive teeth** and strengthen enamel with fluoride

GLUTEN FREE



How does Colgate® Sensitive Prevent & Repair work?

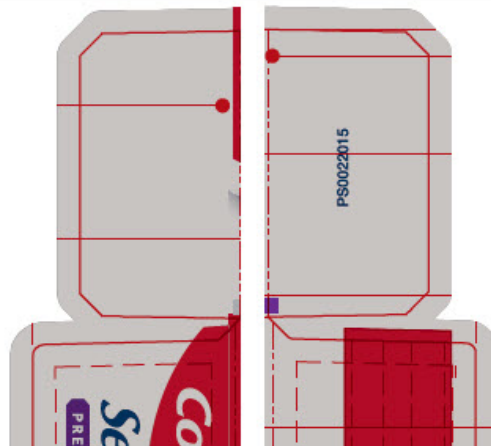
Colgate® Sensitive Prevent & Repair is a clinically proven formula that works fast, within 2 weeks. It provides long-lasting sensitivity relief and builds a protective shield to help prevent painful sensitivity with regular use.

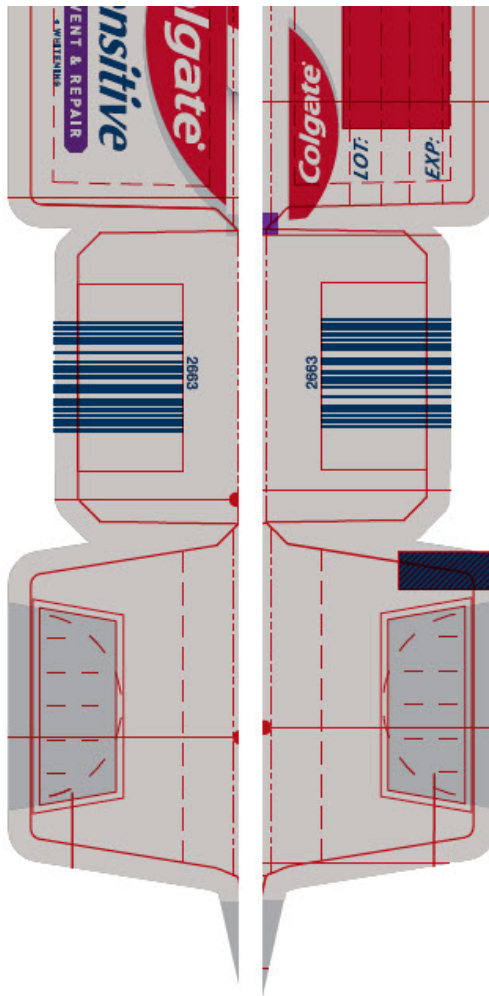
* Maximum strength FDA allowed antisensitivity active ingredient

smartlabel® app enabled scan for more information



"This glue flap can be extended to accommodate supplier requirements. It must comply with the CP Quality gluing standards."





COLGATE SENSITIVE PREVENT AND REPAIR

potassium nitrate and sodium fluoride paste, dentifrice

Product Information

Product Type	HUMAN OTC DRUG	Item Code (Source)	NDC:35000-128
Route of Administration	DENTAL		

Active Ingredient/Active Moiety

Ingredient Name	Basis of Strength	Strength
POTASSIUM NITRATE (UNII: RU45X2JN0Z) (NITRATE ION - UNII:T93E9Y2844)	POTASSIUM NITRATE	50 mg in 1 g
SODIUM FLUORIDE (UNII: 8ZYQ1474W7) (FLUORIDE ION - UNII:Q80VPU408O)	FLUORIDE ION	1.1 mg in 1 g

Inactive Ingredients

Ingredient Name	Strength
WATER (UNII: 059QF0KO0R)	
GLYCERIN (UNII: PDC6A3C0OX)	
HYDRATED SILICA (UNII: Y6O7T4G8P9)	
SORBITOL (UNII: 506T60A25R)	
POLYETHYLENE GLYCOL 600 (UNII: NL4J9F21N9)	

SODIUM PHOSPHATE, TRIBASIC, DODECAHYDRATE (UNII: B70850QPHR)				
METHYL VINYL ETHER AND MALEIC ACID COPOLYMER (1750000 WAMW) (UNII: 9F20VSM0VU)				
SODIUM LAURYL SULFATE (UNII: 368GB5141J)				
POLOXAMER 407 (UNII: TUF2IVW3M2)				
SODIUM HYDROXIDE (UNII: 55X04QC32I)				
SACCHARIN SODIUM (UNII: SB8ZUX40TY)				
CARBOXYMETHYLCELLULOSE SODIUM, UNSPECIFIED (UNII: K679OBS311)				
XANTHAN GUM (UNII: TTV12P4NEE)				
TITANIUM DIOXIDE (UNII: 15FIX9V2JP)				
Product Characteristics				
Color	WHITE	Score		
Shape		Size		
Flavor	MINT	Imprint Code		
Contains				
Packaging				
#	Item Code	Package Description	Marketing Start Date	Marketing End Date
1	NDC:35000-128-60	1 in 1 CARTON	10/25/2019	
1		170 g in 1 TUBE; Type 0: Not a Combination Product		
Marketing Information				
Marketing Category	Application Number or Monograph Citation		Marketing Start Date	Marketing End Date
OTC MONOGRAPH DRUG	M022		10/25/2019	

Labeler - Colgate-Palmolive Company (001344381)

Revised: 1/2024

Colgate-Palmolive Company