

**LOPERAMIDE HYDROCHLORIDE- loperamide hydrochloride capsule
REMEDYREPACK INC.**

Loperamide Hydrochloride Capsules, USP

Rx only

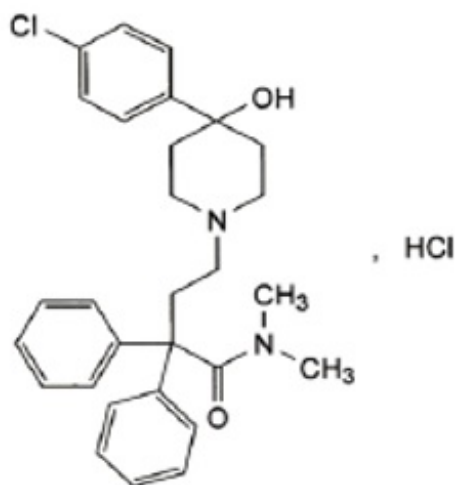
WARNING: TORSADES DE POINTES AND SUDDEN DEATH

- **Cases of Torsades de Pointes, cardiac arrest, and death have been reported with the use of a higher than recommended dosages of loperamide hydrochloride capsules (see WARNINGS and OVERDOSAGE).**
- **Loperamide hydrochloride capsules are contraindicated in pediatric patients less than 2 years of age (see CONTRAINDICATIONS).**
- **Avoid loperamide hydrochloride capsules dosages higher than recommended in adults and pediatric patients 2 years of age and older due to the risk of serious cardiac adverse reactions (see DOSAGE AND ADMINISTRATION).**

DESCRIPTION

Loperamide hydrochloride, 4-(p-chlorophenyl)-4-hydroxy-N,N-dimethyl- α , α -diphenyl-1-piperidinebutyramide monohydrochloride, is a synthetic antidiarrheal for oral use.

The molecular formula for loperamide hydrochloride, USP is $C_{29}H_{33}ClN_2O_2 \cdot HCl$, with a molecular weight of 513.50. The structural formula is:



Loperamide hydrochloride, USP is available in 2 mg capsules.

Loperamide hydrochloride capsules, USP contain the following inactive ingredients: colloidal silicon dioxide, lactose monohydrate, microcrystalline cellulose, magnesium

stearate, and sodium starch glycolate. The hard-capsule shell is composed of gelatin, sodium lauryl sulfate, and titanium dioxide. The capsules are printed with black ink composed of black iron oxide, potassium hydroxide, propylene glycol, and shellac.

CLINICAL PHARMACOLOGY

Mechanism of Action

In vitro and animal studies show that loperamide hydrochloride acts by slowing intestinal motility and by affecting water and electrolyte movement through the bowel. Loperamide binds to the opiate receptor in the gut wall. Consequently, it inhibits the release of acetylcholine and prostaglandins, thereby reducing propulsive peristalsis, and increasing intestinal transit time. Loperamide increases the tone of the anal sphincter, thereby reducing incontinence and urgency.

Pharmacodynamics

Loperamide prolongs the transit time of the intestinal contents. It reduces daily fecal volume, increases the viscosity and bulk density, and diminishes the loss of fluid and electrolytes. Tolerance to the antidiarrheal effect has not been observed.

Pharmacokinetics

Absorption

Plasma concentrations of unchanged drug remain below 2 ng/mL after the intake of a 2 mg capsule of loperamide hydrochloride. Plasma loperamide concentrations are highest approximately 5 hours after administration of the capsule and 2.5 hours after the liquid. The peak plasma concentrations of loperamide were similar for both formulations.

Distribution

Based on literature information, the plasma protein binding of loperamide is about 95%. Loperamide is a P-glycoprotein substrate.

Elimination

The apparent elimination half-life of loperamide is 10.8 hours with a range of 9.1 hours to 14.4 hours. Elimination of loperamide mainly occurs by oxidative N-demethylation.

Metabolism

In vitro loperamide is metabolized mainly by cytochrome P450 (CYP450) isozymes, CYP2C8 and CYP3A4, to form N-demethyl loperamide. In an *in vitro* study, quercetin (CYP2C8 inhibitor) and ketoconazole (CYP3A4 inhibitor) significantly inhibited the N-demethylation process by 40% and 90%, respectively. In addition, CYP2B6 and CYP2D6 appear to play a minor role in loperamide N-demethylation.

Concomitant use of loperamide hydrochloride with inhibitors of CYP3A4 (e.g., itraconazole) or CYP2C8 (e.g., gemfibrozil) or inhibitors of P-glycoprotein (e.g., quinidine, ritonavir) can increase exposure to loperamide (see **PRECAUTIONS, Drug Interactions**).

Excretion

Excretion of the unchanged loperamide and its metabolites mainly occurs through the feces.

INDICATIONS AND USAGE

Loperamide hydrochloride capsules are indicated for the control and symptomatic relief of acute nonspecific diarrhea in patients 2 years of age and older and of chronic diarrhea in adults associated with inflammatory bowel disease. Loperamide hydrochloride capsules are also indicated for reducing the volume of discharge from ileostomies.

CONTRAINDICATIONS

Loperamide hydrochloride capsules are contraindicated in:

- pediatric patients less than 2 years of age due to the risks of respiratory depression and serious cardiac adverse reactions (see **WARNINGS**).
- patients with a known hypersensitivity to loperamide hydrochloride or to any of the excipients.
- patients with abdominal pain in the absence of diarrhea.
- patients with acute dysentery, which is characterized by blood in stools and high fever.
- patients with acute ulcerative colitis.
- patients with bacterial enterocolitis caused by invasive organisms including *Salmonella*, *Shigella*, and *Campylobacter*.
- patients with pseudomembranous colitis (e.g., *Clostridium difficile*) associated with the use of broad-spectrum antibiotics.

WARNINGS

Cardiac Adverse Reactions, Including Torsades de Pointes and Sudden Death

Cases of prolongation of the QT/QTc interval, Torsades de Pointes, other ventricular arrhythmias, cardiac arrest, some resulting in death, have been reported in adults with use of higher than recommended doses per day of loperamide hydrochloride capsules. Cases include patients who were abusing or misusing loperamide hydrochloride (see **OVERDOSAGE** and **DRUG ABUSE AND DEPENDENCE**). Cases of syncope and ventricular tachycardia have been reported in adult patients receiving the recommended dosage of loperamide hydrochloride capsules. Some of these patients were taking other drugs or had other risk factors that may have increased their risk of cardiac adverse reactions. Additionally, postmarketing cases of cardiac arrest, syncope, and respiratory depression have been reported in pediatric patients less than 2 years of age.

Loperamide hydrochloride capsules are contraindicated in pediatric patients less than 2 years of age due to the risks of respiratory depression and serious cardiac adverse reactions. Avoid loperamide hydrochloride dosages higher than recommended in adults and pediatric patients 2 years of age and older due to the risk of serious cardiac adverse reactions (see **DOSAGE AND ADMINISTRATION** and **OVERDOSAGE**).

Avoid loperamide hydrochloride capsules in:

- combination with other drugs or herbal products that are known to prolong the QT interval, including Class 1A (e.g., quinidine, procainamide) or Class III (e.g., amiodarone, sotalol) antiarrhythmics, antipsychotics (e.g., chlorpromazine, haloperidol, thioridazine, ziprasidone), antibiotics (e.g., moxifloxacin), or any other drug known to prolong the QT interval (e.g., pentamidine, levomethadyl acetate, methadone)
- patients with risk factors for QT prolongation, including patients with congenital long QT syndrome, with a history of cardiac arrhythmias or other cardiac conditions, elderly patients and those with electrolyte abnormalities.

Dehydration

Fluid and electrolyte depletion often occur in patients who have diarrhea. In such cases, administration of appropriate fluid and electrolytes is very important. The use of loperamide hydrochloride does not preclude the need for appropriate fluid and electrolyte therapy.

Gastrointestinal Disorders

In general, loperamide hydrochloride should not be used when inhibition of peristalsis is to be avoided due to the possible risk of significant sequelae including ileus, megacolon and toxic megacolon. Loperamide hydrochloride capsules must be discontinued promptly when constipation, abdominal distention or ileus develop.

Treatment of diarrhea with loperamide hydrochloride is only symptomatic. Whenever an underlying etiology can be determined, specific treatment should be given when appropriate (or when indicated).

Patients with AIDS treated with loperamide hydrochloride for diarrhea should have therapy stopped at the earliest signs of abdominal distention. There have been isolated reports of toxic megacolon in AIDS patients with infectious colitis from both viral and bacterial pathogens treated with loperamide hydrochloride.

Variability in Pediatric Response

Loperamide hydrochloride capsules should be used with special caution in pediatric patients because of the greater variability of response in this age group. Dehydration, particularly in pediatric patients less than 6 years of age, may further influence the variability of response to loperamide hydrochloride. Loperamide hydrochloride capsules are contraindicated in pediatric patients less than 2 years of age due to the risks of respiratory depression and serious cardiac adverse reactions.

PRECAUTIONS

General

Allergic Reactions

Extremely rare allergic reactions including anaphylaxis and anaphylactic shock have been reported.

Hepatic Impairment

The effects of hepatic impairment on the pharmacokinetics of loperamide have not been studied. Use loperamide hydrochloride with caution in such patients because the systemic exposure to loperamide may be increased due to reduced metabolism. Monitor patients with hepatic impairment closely for signs of central nervous system (CNS) toxicity.

Renal Impairment

No pharmacokinetic data are available in patients with renal impairment. Since it has been reported that the majority of the drug is metabolized and metabolites or the unchanged drug are excreted mainly in the feces, dosage adjustments in patients with renal impairment are not required.

Geriatric Use

No formal studies have been conducted to evaluate the pharmacokinetics of loperamide in elderly subjects. However, in two studies that enrolled elderly patients, there were no major differences in the drug disposition in elderly patients with diarrhea relative to young patients.

In general, elderly patients may be more susceptible to drug-associated effects on the QT interval. Avoid loperamide hydrochloride in elderly patients taking drugs that can result in prolongation of the QT interval (for example, Class IA or III antiarrhythmics) or in patients with risk factors for Torsades de Pointes (see **WARNINGS**).

Information for Patients

Advise patients:

- to take loperamide hydrochloride capsules at the prescribed dosage. Use of a higher than prescribed dosage is not recommended (see **WARNINGS**). Report to a healthcare facility if you or someone you are caring for taking loperamide hydrochloride capsules experiences fainting episode, a rapid or irregular heartbeat or become unresponsive.
- with acute diarrhea, that if clinical improvement is not observed in 48 hours, discontinue loperamide hydrochloride capsules and contact their healthcare provider.
- to contact their healthcare provider if they see blood in their stools, or if they develop a fever or abdominal distention.
- to use caution when driving a car or operating machinery, as tiredness, dizziness, or drowsiness may occur in the setting of diarrheal syndromes treated with loperamide hydrochloride capsules (see **ADVERSE REACTIONS**).
- to tell their healthcare provider about all the medications they are taking, including prescription and over-the-counter medications, vitamins and herbal supplements, especially if they take Class 1A (e.g., quinidine, procainamide) or Class III (e.g., amiodarone, sotalol) antiarrhythmics, antipsychotics (e.g., chlorpromazine, haloperidol, thioridazine, ziprasidone), antibiotics (e.g., moxifloxacin), or any other drug known to prolong the QT interval (e.g., pentamidine, levomethadyl acetate, methadone).

Repackaged By / Distributed By: RemedyRepack Inc.

625 Kolter Drive, Indiana, PA 15701

(724) 465-8762

Drug Interactions

Effects of Other Drugs on Loperamide

Concomitant use of loperamide hydrochloride with inhibitors of CYP3A4 (e.g., itraconazole) or CYP2C8 (e.g., gemfibrozil) or inhibitors of P-glycoprotein (e.g., quinidine, ritonavir) can increase exposure to loperamide. The increased systemic exposure to loperamide may increase a risk for cardiac adverse reactions especially in patients who are taking multiple CYP enzyme inhibitors, or in patients with underlying cardiac conditions (see **WARNINGS**). Monitor patients for cardiac adverse reactions.

CYP3A4 Inhibitors

Itraconazole

Concomitant administration of multiple doses of 100 mg itraconazole twice daily, an inhibitor of both CYP3A4 and P-glycoprotein, with a single 4 mg dose of loperamide hydrochloride increased the peak plasma concentration and the systemic exposure to loperamide by 2.9-fold and 3.8-fold, respectively.

CYP2C8 Inhibitors

Gemfibrozil

When a single 4 mg dose of loperamide hydrochloride was co-administered with 600 mg gemfibrozil, a strong inhibitor of CYP2C8, on day 3 of a 5-day treatment with gemfibrozil twice daily, the mean peak plasma concentration and the systemic exposure to loperamide was increased by 1.6-fold and 2.2-fold, respectively.

CYP3A4 and CYP2C8 Inhibitors

When multiple doses of both 100 mg itraconazole and 600 mg gemfibrozil twice daily were administered with a single 4 mg dose of loperamide hydrochloride, the mean peak plasma concentration and the systemic exposure to loperamide was increased by 4.2-fold and 12.6-fold, respectively.

P-glycoprotein Inhibitors

Concomitant administration of a 16 mg single dose of loperamide hydrochloride with a 600 mg single dose of quinidine or ritonavir, both of which are P-glycoprotein inhibitors, resulted in a 2- to 3-fold increase in loperamide plasma concentrations. Due to the potential for enhanced CNS adverse reactions when loperamide is co-administered with quinidine and with ritonavir, caution should be exercised when loperamide hydrochloride is administered at the recommended dosages (2 mg, up to 16 mg maximum daily dose) with P-glycoprotein inhibitors.

Effects of Loperamide on Other Drugs

Saquinavir

When a single 16 mg dose of loperamide hydrochloride is co-administered with a 600 mg single dose of saquinavir, loperamide decreased saquinavir exposure by 54%, which

may be of clinical relevance due to reduction of therapeutic efficacy of saquinavir. The effect of saquinavir on loperamide is of less clinical significance. Therefore, when loperamide hydrochloride is given with saquinavir, the therapeutic efficacy of saquinavir should be closely monitored.

Carcinogenesis, Mutagenesis, Impairment of Fertility

In an 18-month rat study with oral loperamide hydrochloride doses up to 40 mg/kg/day (21 times the maximum human dose of 16 mg/day, based on a body surface area comparison), there was no evidence of carcinogenesis.

Loperamide was not genotoxic in the Ames test, the SOS chromotest in *E. coli*, the dominant lethal test in female mice, or the mouse embryo cell transformation assay.

Fertility and reproductive performance was evaluated in rats using oral doses of 2.5 mg/kg/day, 10 mg/kg/day, and 40 mg/kg/day (females only) in a second study. Oral administration of 20 mg/kg/day (approximately 11 times the human dose based on a body surface area comparison) and higher, produced a strong impairment of female fertility. Treatment of female rats with up to 10 mg/kg/day (approximately 5 times the human dose based on a body surface area comparison) had no effect on fertility. Treatment of male rats with oral doses of 40 mg/kg/day (approximately 21 times the human dose based on a body surface area comparison) produced impairment of male fertility, whereas administration of up to 10 mg/kg/day (approximately 5 times the human dose based on a body surface area comparison) had no effect.

Pregnancy

Teratogenic Effects

Teratology studies have been performed in rats using oral loperamide hydrochloride doses of 2.5 mg/kg/day, 10 mg/kg/day, and 40 mg/kg/day, and in rabbits using oral doses of 5 mg/kg/day, 20 mg/kg/day, and 40 mg/kg/day. These studies have revealed no evidence of impaired fertility or harm to the fetus at doses up to 10 mg/kg/day in rats (5 times the human dose based on body surface area comparison) and 40 mg/kg/day in rabbits (43 times the human dose based on body surface area comparison). Treatment of rats with oral doses of 40 mg/kg/day (21 times the human dose based on a body surface area comparison) produced marked impairment of fertility. The studies produced no evidence of teratogenic activity. There are no adequate and well controlled studies in pregnant women. Loperamide hydrochloride should be used during pregnancy only if the potential benefit justifies the potential risk to the fetus.

Non-teratogenic Effects

In a peri- and post-natal development study in rats, oral administration of 40 mg/kg/day produced impairment of growth and survival of offspring.

Nursing Mothers

Small amounts of loperamide may appear in human breast milk. Therefore, loperamide hydrochloride is not recommended during breast-feeding.

Pediatric Use

Loperamide hydrochloride is contraindicated in pediatric patients less than 2 years of age due to the risks of respiratory depression and serious cardiac adverse reactions (see **CONTRAINDICATIONS**). Postmarketing cases of cardiac arrest, syncope, and respiratory depression have been reported in pediatric patients less than 2 years of age (see **WARNINGS**). Pediatric patients may be more sensitive to CNS effects, such as altered mental status, somnolence, and respiratory depression, than adults. There have been rare reports of paralytic ileus associated with abdominal distention. Most of these reports occurred in the setting of acute dysentery, overdose, and with pediatric patients less than two years of age.

Loperamide hydrochloride should be used with special caution in pediatric patients because of their greater variability of response (see **WARNINGS**). Dehydration, particularly in pediatric patients less than 6 years of age, may further influence the variability of response to loperamide hydrochloride.

The safety and effectiveness of loperamide hydrochloride in pediatric patients with chronic diarrhea have not been established. Although loperamide hydrochloride has been studied in a limited number of pediatric patients with chronic diarrhea; the therapeutic dose for the treatment of chronic diarrhea in a pediatric population has not been established.

In case of accidental overdosage of loperamide hydrochloride by pediatric patients, see **OVERDOSAGE** for suggested treatment.

ADVERSE REACTIONS

Clinical Trial Experience

The adverse effects reported during clinical investigations of loperamide hydrochloride are difficult to distinguish from symptoms associated with the diarrheal syndrome. Adverse experiences recorded during clinical studies with loperamide hydrochloride were generally of a minor and self-limiting nature. They were more commonly observed during the treatment of chronic diarrhea.

The adverse events reported are summarized irrespective of the causality assessment of the investigators.

1) Adverse events from 4 placebo-controlled studies in patients with acute diarrhea

The adverse events with an incidence of 1.0% or greater, which were reported at least as often in patients on loperamide hydrochloride as on placebo, are presented in the table below.

	Acute Diarrhea	
	Loperamide Hydrochloride	Placebo
No. of treated patients	231	236
Gastrointestinal AE%	2.6%	0.8%
Constipation		

The adverse events with an incidence of 1.0% or greater, which were more frequently

reported in patients on placebo than on loperamide hydrochloride, were: dry mouth, flatulence, abdominal cramp and colic.

2) Adverse events from 20 placebo-controlled studies in patients with chronic diarrhea

The adverse events with an incidence of 1.0% or greater, which were reported at least as often in patients on loperamide hydrochloride as on placebo, are presented in the table below.

	Chronic Diarrhea	
	Loperamide Hydrochloride	Placebo
No. of treated patients	285	277
Gastrointestinal AE%	5.3%	0.0%
Constipation		
Central and peripheral nervous system AE%	1.4%	0.7%
Dizziness		

The adverse events with an incidence of 1.0% or greater, which were more frequently reported in patients on placebo than on loperamide hydrochloride were: nausea, vomiting, headache, meteorism, abdominal pain, abdominal cramp and colic.

3) Adverse events from 76 controlled and uncontrolled studies in patients with acute or chronic diarrhea

The adverse events with an incidence of 1.0% or greater in patients from all studies are given in the table below.

	Acute Diarrhea	Chronic Diarrhea	All Studies*
No. of treated patients	1,913	1,371	3,740
Gastrointestinal AE%	0.7%	3.2%	1.8%
Nausea			
Constipation	1.6%	1.9%	1.7%
Abdominal cramps	0.5%	3.0%	1.4%

* All patients in all studies, including those in which it was not specified if the adverse events occurred in patients with acute or chronic diarrhea.

Postmarketing Experience

The following adverse events have been reported:

Cardiac disorders

QT/QTc interval prolongation, Torsades de Pointes, other ventricular arrhythmias, cardiac arrest, syncope, and death (see **WARNINGS** and **OVERDOSAGE**).

Skin and subcutaneous tissue disorders

Rash, pruritus, urticaria, angioedema, and extremely rare cases of bullous eruption including erythema multiforme, Stevens-Johnson syndrome and Toxic Epidermal

Necrosis have been reported with use of loperamide hydrochloride.

Immune system disorders

Isolated occurrences of allergic reactions and in some cases severe hypersensitivity reactions including anaphylactic shock and anaphylactoid reactions have been reported with the use of loperamide hydrochloride.

Gastrointestinal disorders

Dry mouth, abdominal pain, distention or discomfort, nausea, vomiting, flatulence, dyspepsia, constipation, paralytic ileus, megacolon; including toxic megacolon (see **CONTRAINDICATIONS** and **WARNINGS**).

Renal and urinary disorders

Urinary retention

Nervous system disorders

Drowsiness, dizziness

General disorders and administrative site conditions

Tiredness

A number of the adverse events reported during the clinical investigations and post-marketing experience with loperamide are frequent symptoms of the underlying diarrheal syndrome (abdominal pain/discomfort, nausea, vomiting, dry mouth, tiredness, drowsiness, dizziness, constipation, and flatulence). These symptoms are often difficult to distinguish from undesirable drug effects.

To report SUSPECTED ADVERSE REACTIONS, contact Bionpharma Inc. at 1-888-235-BION or 1-888-235-2466 or FDA at 1-800-FDA-1088 or www.fda.gov/medwatch.

DRUG ABUSE AND DEPENDENCE

Controlled Substance

Loperamide is not a controlled substance.

Abuse

Loperamide is a mu-opioid agonist. A human abuse potential study of loperamide hydrochloride at single doses up to 60 mg (3.75 times the recommended maximum adult dosage of 16 mg per day) was compared, in a double-blind cross-over design using nine subjects who had been active opiate users, to a threshold dose of codeine sulfate at 120 mg (96 mg base) or placebo. This resulted in one subject (11%) feeling a drug on placebo and identifying it as "dope" (heroin) and liking it slightly. Codeine was felt by 56% of subjects and identified as "dope" by 44%. Loperamide was felt by 44% of subjects and identified as "dope" by 11% and possibly dope mixed with some other kind of drug by another 22%. Loperamide abuse and misuse have been reported, especially at doses of 60 mg or greater. Loperamide can have greater CNS opioid effects at higher doses or with co-administration of drugs that increase systemic exposure and/or increase CNS penetration of loperamide (through inhibition of the CYP450 enzyme

system or inhibition of P-glycoprotein). Loperamide is primarily being misused for relief from opioid withdrawal, and abused by a few users who obtain some (reportedly mild-moderate) level of euphoria.

Dependence

In animals, parenteral administration of loperamide hydrochloride can cause physical dependence, cross-tolerance to opioids, and all the other pharmacologic effects typical of mu-opioid agonists.

Studies in morphine-dependent monkeys demonstrated that loperamide hydrochloride at doses above those recommended for humans prevented signs of morphine withdrawal.

OVERDOSAGE

The use of higher than recommended loperamide hydrochloride doses may result in life-threatening cardiac, CNS and respiratory adverse reactions.

If over-exposure occurs, call your Poison Control Center at 1-800-222-1222 for current information on the management of poisoning or overdose.

Cardiac Effects

Symptoms

Cases of overdose with loperamide hydrochloride (chronic ingestion of doses ranging from 70 mg to 1,600 mg daily; 4 times to 100 times the recommended dose) have resulted in life-threatening cardiac adverse reactions, including QT/QTc and QRS interval prolongation, Torsades de Pointes, Brugada syndrome and other ventricular arrhythmias, syncope, cardiac arrest, and death. Cases include patients who were abusing (using supratherapeutic doses in place of opioids to induce euphoria) or misusing (taking higher than recommended doses to control diarrhea or to prevent opioid withdrawal) loperamide. The following are representative cases that included cardiac adverse reactions:

- 25-year old abused loperamide and presented to the hospital on multiple occasions with symptoms of syncope, nausea, vomiting, bradycardia, hypotensive shock. The patient also experienced ventricular tachycardia, a prolonged QTc of 527 ms and QRS interval of 170 ms, frequent premature ventricular contractions, and subsequent cardiac arrest and death (elevated loperamide blood concentration of 32 ng/ml).
- 54-year old misused loperamide hydrochloride (up to 144 mg per day) as a self-treatment for chronic diarrhea for over 2 years. Signs of cardiac toxicity included syncope, prolonged QT of 500 ms sinus arrest with junctional escape rhythm, and polymorphic ventricular tachycardia, which required cardioversion and implantable cardioverter-defibrillator (ICD) management.
- 26-year old, with prior opioid abuse, presented to the hospital with recurrent syncope and developed Torsades de Pointes requiring electrical cardioversion. An ECG revealed a sinus rhythm with a heart rate of 85 bpm and a markedly prolonged QTc interval of greater than 700 ms. The patient reported ingesting 100 mg to 250 mg of loperamide hydrochloride with 400 mg of cimetidine daily for several months to simulate the euphoric sensation associated with opioids.

Management

Consider loperamide as a possible cause of cardiac arrhythmias in patients who may have a history of opioid abuse or recent ingestion of unknown drugs and in the differential diagnosis of unstable arrhythmias, prolonged QTc or QRS intervals, and Torsades de Pointes.

If loperamide-induced cardiac toxicity is suspected, promptly discontinue the drug and initiate therapy to manage and prevent cardiac arrhythmias and serious outcomes.

In many cases of loperamide overdose, anti-arrhythmic medications (e.g., magnesium sulfate) were ineffective in resolving the arrhythmias and preventing further episodes of Torsades de Pointes. Electrical cardioversion and overdrive pacing, and isoproterenol continuous infusion were reported to manage QTc prolongation in the setting of overdose.

Laboratory Testing

Loperamide serum concentrations are not widely available or clinically useful to guide patient management.

CNS and Respiratory Depression

Symptoms

Cases of loperamide overdose (including relative overdose due to hepatic dysfunction), may cause opioid toxic effects including CNS depression (e.g. altered mental status, stupor, coordination disorders, somnolence, miosis, muscular hypertonia, respiratory depression), hypotension, urinary retention, and paralytic ileus. Pediatric patients may be more sensitive to CNS effects, including respiratory depression, than adults.

Management

Loperamide non-cardiac arrhythmia overdosages should be treated as opioid overdosages. Naloxone may reverse the opioid-related toxicity, including CNS and respiratory depression, and hypotension, associated with loperamide overdose.

In adults and pediatric patients, naloxone may be administered intravenously. Appropriate doses of naloxone, via intranasal, intramuscular, intraosseous, or subcutaneous administration may be necessary if the intravenous route is not available. If the desired degree of opioid-related toxicity counteraction and improvement are not obtained, naloxone may be repeated at two- to three-minute intervals. If no response in opioid-related effects is observed after naloxone has been administered, then diagnosis of opioid-induced toxicity should be questioned.

Refer to the naloxone prescribing information for complete information on initial and subsequent dosages.

For patients whose adverse reactions are responsive to naloxone, monitor vital signs, neurologic and cardiopulmonary status for recurrence of opioid overdose symptoms for at least 24 hours after the last dose of naloxone, due to the prolonged intestinal retention of loperamide and the short duration (one to three hours) of naloxone. Patients with severe CNS or respiratory depression, and those who require multiple doses of naloxone to reverse symptoms, should be admitted to the hospital and may

require intensive care.

Laboratory Testing

Standard drug screens for opioids do not include an assay for loperamide; such testing for opioids will yield negative results even in the presence of loperamide.

DOSAGE AND ADMINISTRATION

Loperamide hydrochloride capsules are contraindicated in pediatric patients less than 2 years of age due to the risks of respiratory depression and serious cardiac adverse reactions (see **CONTRAINDICATIONS**).

Avoid loperamide hydrochloride capsules dosages higher than recommended in adult or pediatric patients 2 years of age and older due to the risk of serious cardiac adverse reactions (See **WARNINGS** and **OVERDOSAGE**).

(1 capsule = 2 mg) Patients should receive appropriate fluid and electrolyte replacement as needed.

Acute Diarrhea

Adults and Pediatric Patients 13 Years and Older: The recommended initial dose is 4 mg (two capsules) followed by 2 mg (one capsule) after each unformed stool. The maximum daily dose is 16 mg (eight capsules). Clinical improvement is usually observed within 48 hours.

Pediatric Patients 2 years to 12 Years of Age: In pediatric patients 2 years to 5 years of age (20 kg or less), the non-prescription liquid formulation of loperamide (1 mg/5 mL) should be used; for ages 6 to 12, either loperamide hydrochloride capsules or non-prescription liquid formulation of loperamide may be used. For pediatric patients 2 years to 12 years of age, the following schedule for capsules or liquid will usually fulfill initial dosage requirements:

Recommended First Day Dosage Schedule

Two to five years (13 kg to 20 kg): 1 mg three times daily (3 mg total daily dosage)

Six to eight years (20 kg to 30 kg): 2 mg twice daily (4 mg total daily dosage)

Eight to twelve years (greater than 30 kg): 2 mg three times daily (6 mg total daily dosage)

Recommended Subsequent Daily Dosage

Following the first treatment day, it is recommended that subsequent loperamide hydrochloride capsules doses (1 mg/10 kg body weight) be administered only after a loose stool. The total daily dosage should not exceed recommended dosages for the first day.

Chronic Diarrhea

Adults

The recommended initial dose is 4 mg (two capsules) followed by 2 mg (one capsule) after each unformed stool until diarrhea is controlled, after which the dosage of loperamide hydrochloride capsules should be reduced to meet individual requirements. When the optimal daily dosage has been established, this amount may then be administered as a single dose or in divided doses.

The average daily maintenance dosage in clinical trials was 4 mg to 8 mg (two to four capsules per day). The maximum daily dosage is 16 mg (eight capsules per day). If clinical improvement is not observed after treatment with 16 mg per day for at least 10 days, symptoms are unlikely to be controlled by further administration. Loperamide hydrochloride capsules administration may be continued if diarrhea cannot be adequately controlled with diet or specific treatment.

Elderly

No formal pharmacokinetic studies were conducted in elderly subjects. However, there were no major differences reported in the drug disposition in elderly patients with diarrhea relative to young patients. No dose adjustment is required for the elderly.

In general, elderly patients may be more susceptible to drug-associated effects of the QT interval. Avoid loperamide hydrochloride capsules in elderly patients taking drugs that can result in prolongation of the QT interval (for example, Class IA or III antiarrhythmics) or in patients with risk factors for Torsades de Pointes (see **WARNINGS**).

Renal Impairment

No pharmacokinetic data are available in patients with renal impairment. Since the metabolites and the unchanged drug are mainly excreted in the feces, no dosage adjustment is required for patients with renal impairment (see **PRECAUTIONS**).

Hepatic Impairment

The pharmacokinetics of loperamide have not been studied in patients with hepatic impairment. Use loperamide hydrochloride capsules with caution in such patients because the systemic exposure may be increased due to reduced metabolism (see **PRECAUTIONS**).

HOW SUPPLIED

Loperamide hydrochloride capsules, USP are available containing 2 mg of loperamide hydrochloride, USP. The capsules have a hard-shell gelatin capsule with a white opaque cap and a white opaque body filled with white to off-white powder blend. The capsule is printed with "LM1" in black ink on the body. Loperamide hydrochloride capsules, USP are supplied in

NDC: 70518-3400-00

NDC: 70518-3400-01

NDC: 70518-3400-02

NDC: 70518-3400-03

PACKAGING: 30 in 1 BLISTER PACK

PACKAGING: 10 in 1 BLISTER PACK

PACKAGING: 15 in 1 BLISTER PACK

PACKAGING: 30 in 1 BLISTER PACK

Store at 20°C to 25°C (68°F to 77°F) [See USP Controlled Room Temperature].

Dispense in a tight, light-resistant container as defined in the USP using a child-resistant closure.

Repackaged and Distributed By:

Remedy Repack, Inc.

625 Kolter Dr. Suite #4 Indiana, PA 1-724-465-8762

DRUG: Loperamide Hydrochloride

GENERIC: loperamide hydrochloride

DOSAGE: CAPSULE

ADMINISTRATION: ORAL

NDC: 70518-3400-0

NDC: 70518-3400-1

NDC: 70518-3400-2

NDC: 70518-3400-3

COLOR: white

SHAPE: CAPSULE

SCORE: No score

SIZE: 14 mm

IMPRINT: LM1

PACKAGING: 30 in 1 BLISTER PACK

PACKAGING: 10 in 1 BLISTER PACK

PACKAGING: 15 in 1 BLISTER PACK

PACKAGING: 30 in 1 BLISTER PACK

ACTIVE INGREDIENT(S):

- LOPERAMIDE HYDROCHLORIDE 2mg in 1

INACTIVE INGREDIENT(S):

- SILICON DIOXIDE
- LACTOSE MONOHYDRATE
- MICROCRYSTALLINE CELLULOSE
- MAGNESIUM STEARATE
- SODIUM STARCH GLYCOLATE TYPE A
- GELATIN
- SODIUM LAURYL SULFATE

- TITANIUM DIOXIDE
- FERROSO FERRIC OXIDE
- POTASSIUM HYDROXIDE
- PROPYLENE GLYCOL
- SHELLAC

Loperamide HCl

2 mg

Capsule

QTY: 30 Capsules



RX ONLY

NDC #: 70518-3400-00

Expires:

LOT #:

Source NDC: 69452-0271-20

MFG: Bionpharma Inc., Princeton, NJ 08540

Keep this and all medication out of the reach of children



Directions For Use: See Package Insert

Store at 20-25°C (68-77°F); excursions permitted to 15-30°C (59-86°F) [See USP]

Repackaged by: RemedyRepack Inc., Indiana, PA 15701, 724.465.8762

Loperamide HCl

2 mg

Capsule

QTY: 10 Capsules



RX ONLY

NDC #: 70518-3400-01

Expires:

LOT #:

Source NDC: 69452-0271-20

MFG: Bionpharma Inc., Princeton, NJ 08540

Keep this and all medication out of the reach of children



Directions For Use: See Package Insert

Store at 20-25°C (68-77°F); excursions permitted to 15-30°C (59-86°F) [See USP]

Repackaged by: RemedyRepack Inc., Indiana, PA 15701, 724.465.8762

Loperamide HCl

2 mg

Capsule

QTY: 15 Capsules



RX ONLY

NDC #: 70518-3400-02

Expires:

LOT #:

Source NDC: 69452-0271-30

MFG: Bionpharma Inc., Princeton, NJ 08540

Keep this and all medication out of the reach of children



Directions For Use: See Package Insert

Store at 20-25°C (68-77°F); excursions permitted to 15-30°C (59-86°F) [See USP]

Repackaged by: RemedyRepack Inc., Indiana, PA 15701, 724.465.8762

Loperamide HCl

2 mg

Capsule

QTY: 30 Capsules



RX ONLY

NDC #: 70518-3400-03

Expires:

LOT #:

Source NDC: 69452-0271-30

MFG: Bionpharma Inc., Princeton, NJ 08540

Keep this and all medication out of the reach of children



Directions For Use: See Package Insert

Store at 20-25°C (68-77°F); excursions permitted to 15-30°C (59-86°F) [See USP]

Repackaged by: RemedyRepack Inc., Indiana, PA 15701, 724.465.8762

LOPERAMIDE HYDROCHLORIDE

loperamide hydrochloride capsule

Product Information

Product Type	HUMAN PRESCRIPTION DRUG	Item Code (Source)	NDC:70518-3400(NDC:69452-271)
Route of Administration	ORAL		

Active Ingredient/Active Moiety

Ingredient Name	Basis of Strength	Strength
LOPERAMIDE HYDROCHLORIDE (UNII: 77TI35393C) (LOPERAMIDE - UNII:6X9OC3H4II)	LOPERAMIDE HYDROCHLORIDE	2 mg

Inactive Ingredients

Ingredient Name	Strength
SILICON DIOXIDE (UNII: ETJ7Z6XBU4)	
LACTOSE MONOHYDRATE (UNII: EWQ57Q8I5X)	
MICROCRYSTALLINE CELLULOSE (UNII: OP1R32D61U)	
MAGNESIUM STEARATE (UNII: 70097M6I30)	
SODIUM STARCH GLYCOLATE TYPE A (UNII: H8AV0SQX4D)	
GELATIN (UNII: 2G86QN327L)	
SODIUM LAURYL SULFATE (UNII: 368GB5141J)	
TITANIUM DIOXIDE (UNII: 15FIX9V2JP)	
FERROSOFERRIC OXIDE (UNII: XM0M87F357)	
POTASSIUM HYDROXIDE (UNII: WZH3C48M4T)	
PROPYLENE GLYCOL (UNII: 6DC9Q167V3)	
SHELLAC (UNII: 46N107B71O)	

Product Characteristics

Color	white (white to off white)	Score	no score
Shape	CAPSULE	Size	14mm
Flavor		Imprint Code	LM1
Contains			

Packaging

#	Item Code	Package Description	Marketing Start Date	Marketing End Date
1	NDC:70518-3400-0	30 in 1 BLISTER PACK; Type 0: Not a Combination Product	04/04/2022	
2	NDC:70518-3400-1	10 in 1 BLISTER PACK; Type 0: Not a Combination Product	05/02/2022	
3	NDC:70518-3400-2	15 in 1 BLISTER PACK; Type 0: Not a Combination Product	02/16/2023	
4	NDC:70518-3400-3	30 in 1 BLISTER PACK; Type 0: Not a Combination Product	03/06/2024	

Marketing Information

Marketing Category	Application Number or Monograph Citation	Marketing Start Date	Marketing End Date
ANDA	ANDA215579	04/04/2022	

Labeler - REMEDYREPACK INC. (829572556)

Revised: 3/2024

REMEDYREPACK INC.