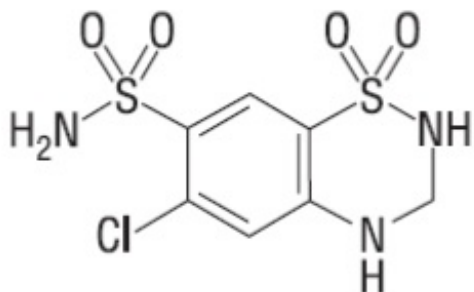


## **HYDROCHLOROTHIAZIDE- hydrochlorothiazide capsule** **Northwind Pharmaceuticals**

### **Hydrochlorothiazide Capsules USP, 12.5 mg**

#### **DESCRIPTION**

Hydrochlorothiazide, USP is the 3,4-dihydro derivative of chlorothiazide. Its chemical name is 6-Chloro-3,4-dihydro-2 H-1,2,4-benzothiadiazine-7-sulfonamide 1,1-dioxide. Its molecular formula is  $C_7H_8ClN_3O_4S_2$ ; its molecular weight is 297.74; and its structural formula is:



It is a white, or practically white, crystalline powder which is slightly soluble in water, but freely soluble in sodium hydroxide solution.

Hydrochlorothiazide is supplied as 12.5 mg capsules for oral use.

*Inactive ingredients:* Black iron oxide, colloidal silicon dioxide, gelatin, magnesium stearate, microcrystalline cellulose, pregelatinized starch, sodium lauryl sulfate and titanium dioxide.

#### **CLINICAL PHARMACOLOGY**

Hydrochlorothiazide blocks the reabsorption of sodium and chloride ions, and it thereby increases the quantity of sodium traversing the distal tubule and the volume of water excreted. A portion of the additional sodium presented to the distal tubule is exchanged there for potassium and hydrogen ions. With continued use of hydrochlorothiazide and depletion of sodium, compensatory mechanisms tend to increase this exchange and may produce excessive loss of potassium, hydrogen and chloride ions.

Hydrochlorothiazide also decreases the excretion of calcium and uric acid, may increase the excretion of iodide and may reduce glomerular filtration rate. Metabolic toxicities associated with excessive electrolyte changes caused by hydrochlorothiazide have been shown to be dose-related.

#### **Pharmacokinetics and Metabolism**

Hydrochlorothiazide is well absorbed (65% to 75%) following oral administration. Absorption of hydrochlorothiazide is reduced in patients with congestive heart failure.

Peak plasma concentrations are observed within 1 to 5 hours of dosing, and range from 70 to 490 ng/mL following oral doses of 12.5 to 100 mg. Plasma concentrations are linearly related to the administered dose. Concentrations of hydrochlorothiazide are 1.6 to 1.8 times higher in whole blood than in plasma. Binding to serum proteins has been reported to be approximately 40% to 68%. The plasma elimination half-life has been reported to be 6 to 15 hours. Hydrochlorothiazide is eliminated primarily by renal pathways. Following oral doses of 12.5 to 100 mg, 55% to 77% of the administered dose appears in urine and greater than 95% of the absorbed dose is excreted in urine as unchanged drug. In patients with renal disease, plasma concentrations of hydrochlorothiazide are increased and the elimination half-life is prolonged.

When hydrochlorothiazide is administered with food, its bioavailability is reduced by 10%, the maximum plasma concentration is reduced by 20%, and the time to maximum concentration increases from 1.6 to 2.9 hours.

### **Pharmacodynamics**

Acute antihypertensive effects of thiazides are thought to result from a reduction in blood volume and cardiac output, secondary to a natriuretic effect, although a direct vasodilatory mechanism has also been proposed. With chronic administration, plasma volume returns toward normal, but peripheral vascular resistance is decreased. The exact mechanism of the antihypertensive effect of hydrochlorothiazide is not known.

Thiazides do not affect normal blood pressure. Onset of action occurs within 2 hours of dosing, peak effect is observed at about 4 hours, and activity persists for up to 24 hours.

### **Clinical Studies**

In an 87 patient 4-week double-blind, placebo controlled, parallel group trial, patients who received hydrochlorothiazide had reductions in seated systolic and diastolic blood pressure that were significantly greater than those seen in patients who received placebo. In published placebo-controlled trials comparing 12.5 mg of hydrochlorothiazide to 25 mg, the 12.5 mg dose preserved most of the placebo-corrected blood pressure reduction seen with 25 mg.

## **INDICATIONS AND USAGE**

Hydrochlorothiazide capsules are indicated in the management of hypertension either as the sole therapeutic agent, or in combination with other antihypertensives. Unlike potassium sparing combination diuretic products, hydrochlorothiazide capsules may be used in those patients in whom the development of hyperkalemia cannot be risked, including patients taking ACE inhibitors.

**Usage in Pregnancy:** The routine use of diuretics in an otherwise healthy woman is inappropriate and exposes mother and fetus to unnecessary hazard. Diuretics do not prevent development of toxemia of pregnancy, and there is no satisfactory evidence that they are useful in the treatment of developed toxemia.

Edema during pregnancy may arise from pathological causes or from the physiologic and mechanical consequences of pregnancy. Diuretics are indicated in pregnancy when edema is due to pathologic causes, just as they are in the absence of pregnancy.

Dependent edema in pregnancy resulting from restriction of venous return by the expanded uterus is properly treated through elevation of the lower extremities and use of support hose; use of diuretics to lower intravascular volume in this case is illogical and unnecessary. There is hypervolemia during normal pregnancy which is harmful to neither the fetus nor the mother (in the absence of cardiovascular disease), but which is associated with edema, including generalized edema in the majority of pregnant women. If this edema produces discomfort, increased recumbency will often provide relief. In rare instances this edema may cause extreme discomfort which is not relieved by rest. In these cases a short course of diuretics may provide relief and may be appropriate.

## **CONTRAINDICATIONS**

Hydrochlorothiazide capsules are contraindicated in patients with anuria. Hypersensitivity to this product or other sulfonamide derived drugs is also contraindicated.

## **WARNINGS**

**Acute Myopia and Secondary Angle-Closure Glaucoma:** Hydrochlorothiazide, a sulfonamide, can cause an idiosyncratic reaction, resulting in acute transient myopia and acute angle-closure glaucoma. Symptoms include acute onset of decreased visual acuity or ocular pain and typically occur within hours to weeks of drug initiation. Untreated acute angle-closure glaucoma can lead to permanent vision loss. The primary treatment is to discontinue hydrochlorothiazide as rapidly as possible. Prompt medical or surgical treatments may need to be considered if the intraocular pressure remains uncontrolled.

Risk factors for developing acute angle-closure glaucoma may include a history of sulfonamide or penicillin allergy.

**Diabetes and Hypoglycemia:** Latent diabetes mellitus may become manifest and diabetic patients given thiazides may require adjustment of their insulin dose.

**Renal Disease:** Cumulative effects of the thiazides may develop in patients with impaired renal function. In such patients, thiazides may precipitate azotemia.

## **PRECAUTIONS**

### **Electrolyte and Fluid Balance Status**

In published studies, clinically significant hypokalemia has been consistently less common in patients who received 12.5 mg of hydrochlorothiazide than in patients who received higher doses. Nevertheless, periodic determination of serum electrolytes should be performed in patients who may be at risk for the development of hypokalemia. Patients should be observed for signs of fluid or electrolyte disturbances, i.e. hyponatremia, hypochloremic alkalosis, and hypokalemia and hypomagnesemia.

Warning signs or symptoms of fluid and electrolyte imbalance include dryness of mouth, thirst, weakness, lethargy, drowsiness, restlessness, muscle pains or cramps, muscular fatigue, hypotension, oliguria, tachycardia, and gastrointestinal disturbances such as nausea and vomiting.

Hypokalemia may develop, especially with brisk diuresis when severe cirrhosis is

present, during concomitant use of corticosteroid or adrenocorticotrophic hormone (ACTH) or after prolonged therapy. Interference with adequate oral electrolyte intake will also contribute to hypokalemia. Hypokalemia and hypomagnesemia can provoke ventricular arrhythmias or sensitize or exaggerate the response of the heart to the toxic effects of digitalis. Hypokalemia may be avoided or treated by potassium supplementation or increased intake of potassium rich foods.

Dilutional hyponatremia is life-threatening and may occur in edematous patients in hot weather; appropriate therapy is water restriction rather than salt administration, except in rare instances when the hyponatremia is life-threatening. In actual salt depletion, appropriate replacement is the therapy of choice.

### **Hyperuricemia**

Hyperuricemia or acute gout may be precipitated in certain patients receiving thiazide diuretics.

### **Impaired Hepatic Function**

Thiazides should be used with caution in patients with impaired hepatic function. They can precipitate hepatic coma in patients with severe liver disease.

### **Parathyroid Disease**

Calcium excretion is decreased by thiazides, and pathologic changes in the parathyroid glands, with hypercalcemia and hypophosphatemia, have been observed in a few patients on prolonged thiazide therapy.

### **Information for Patients:**

*Non-melanoma Skin Cancer:* Instruct patients taking hydrochlorothiazide to protect skin from the sun and undergo regular skin cancer screening.

### **Drug Interactions**

When given concurrently the following drugs may interact with thiazide diuretics:

*Alcohol, barbiturates, or narcotics* - potentiation of orthostatic hypotension may occur.

*Antidiabetic drugs* - (oral agents and insulin) dosage adjustment of the antidiabetic drug may be required.

*Other antihypertensive drugs* - additive effect or potentiation.

*Cholestyramine and colestipol resins* - Cholestyramine and colestipol resins bind the hydrochlorothiazide and reduce its absorption from the gastrointestinal tract by up to 85 and 43 percent, respectively.

*Corticosteroid, ACTH* - intensified electrolyte depletion, particularly hypokalemia.

*Pressor amines (e.g., norepinephrine)* - possible decreased response to pressor amines but not sufficient to preclude their use.

*Skeletal muscle relaxants, nondepolarizing (e.g., tubocurarine)* - possible increased responsiveness to the muscle relaxant.

*Lithium* - generally should not be given with diuretics. Diuretic agents reduce the renal

clearance of lithium and greatly increase the risk of lithium toxicity. Refer to the package insert for lithium preparations before use of such preparations with hydrochlorothiazide.

*Non-steroidal anti-inflammatory drugs* - In some patients, the administration of a non-steroidal anti-inflammatory agent can reduce the diuretic, natriuretic, and antihypertensive effects of loop, potassium-sparing and thiazide diuretics. When hydrochlorothiazide and non-steroidal anti-inflammatory agents are used concomitantly, the patients should be observed closely to determine if the desired effect of the diuretic is obtained.

*Drug/Laboratory Test Interactions* - Thiazides should be discontinued before carrying out tests for parathyroid function (see **PRECAUTIONS**, General).

*Carcinogenesis, Mutagenesis, Impairment of Fertility*: Two-year feeding studies in mice and rats conducted under the auspices of the National Toxicology Program (NTP) uncovered no evidence of a carcinogenic potential of hydrochlorothiazide in female mice (at doses of up to approximately 600 mg/kg/day) or in male and female rats (at doses of approximately 100 mg/kg/day). The NTP, however, found equivocal evidence for hepatocarcinogenicity in male mice. Hydrochlorothiazide was not genotoxic *in vitro* in the Ames mutagenicity assay of *Salmonella typhimurium* strains TA 98, TA 100, TA 1535, TA 1537, and TA 1538 and in the Chinese Hamster Ovary (CHO) test for chromosomal aberrations, or *in vivo* in assays using mouse germinal cell chromosomes, Chinese hamster bone marrow chromosomes, and the *Drosophila* sex-linked recessive lethal trait gene. Positive test results were obtained only in the *in vitro* CHO Sister Chromatid Exchange (clastogenicity) and in the Mouse Lymphoma Cell (mutagenicity) assays, using concentrations of hydrochlorothiazide from 43 to 1,300 mcg/mL, and in the *Aspergillus nidulans* non-disjunction assay at an unspecified concentration.

Hydrochlorothiazide had no adverse effects on the fertility of mice and rats of either sex in studies wherein these species were exposed, via their diet, to doses of up to 100 and 4 mg/kg, respectively, prior to conception and throughout gestation.

## **Pregnancy**

*Teratogenic Effects*: Studies in which hydrochlorothiazide was orally administered to pregnant mice and rats during their respective periods of major organogenesis at doses up to 3,000 and 1,000 mg hydrochlorothiazide/kg, respectively, provided no evidence of harm to the fetus. There are, however, no adequate and well-controlled studies in pregnant women. Because animal reproduction studies are not always predictive of human response, this drug should be used during pregnancy only if clearly needed.

*Nonteratogenic Effects*: Thiazides cross the placental barrier and appear in cord blood. There is a risk of fetal or neonatal jaundice, thrombocytopenia, and possibly other adverse reactions that have occurred in adults.

*Nursing Mothers*: Thiazides are excreted in breast milk. Because of the potential for serious adverse reactions in nursing infants, a decision should be made whether to discontinue nursing or to discontinue hydrochlorothiazide, taking into account the importance of the drug to the mother.

## **Pediatric Use**

Safety and effectiveness in pediatric patients have not been established.

## **Elderly Use**

A greater blood pressure reduction and an increase in side effects may be observed in the elderly (i.e., >65 years) with hydrochlorothiazide. Starting treatment with the lowest available dose of hydrochlorothiazide (12.5 mg) is therefore recommended. If further titration is required, 12.5 mg increments should be utilized.

## **ADVERSE REACTIONS**

The adverse reactions associated with hydrochlorothiazide have been shown to be dose related. In controlled clinical trials, the adverse events reported with doses of 12.5 mg hydrochlorothiazide once daily were comparable to placebo. The following adverse reactions have been reported for doses of hydrochlorothiazide 25 mg and greater and, within each category, are listed in the order of decreasing severity.

*Body as a whole:* Weakness.

*Cardiovascular:* Hypotension including orthostatic hypotension (may be aggravated by alcohol, barbiturates, narcotics or antihypertensive drugs).

*Digestive:* Pancreatitis, jaundice (intrahepatic cholestatic jaundice), diarrhea, vomiting, sialadenitis, cramping, constipation, gastric irritation, nausea, anorexia.

*Hematologic:* Aplastic anemia, agranulocytosis, leukopenia, hemolytic anemia, thrombocytopenia.

*Hypersensitivity:* Anaphylactic reactions, necrotizing angitis (vasculitis and cutaneous vasculitis), respiratory distress including pneumonitis and pulmonary edema, photosensitivity, fever, urticaria, rash, purpura.

*Metabolic:* Electrolyte imbalance (see PRECAUTIONS), hyperglycemia, glycosuria, hyperuricemia.

*Musculoskeletal:* Muscle Spasm.

*Nervous System/Psychiatric:* Vertigo, paresthesia, dizziness, headache, restlessness.

*Renal:* Renal failure, renal dysfunction, interstitial nephritis (see **WARNINGS**).

*Skin:* Erythema multiforme including Stevens-Johnson syndrome, exfoliative dermatitis including toxic epidermal necrolysis, alopecia.

*Special Senses:* Transient blurred vision, xanthopsia.

*Urogenital:* Impotence.

Whenever adverse reactions are moderate or severe, thiazide dosage should be reduced or therapy withdrawn.

## **Postmarketing Experience:**

The following adverse reaction has been identified during post-approval use of hydrochlorothiazide. Because the reaction is reported voluntarily from a population of uncertain size, it is not possible to reliably estimate the frequency or establish a causal relationship to drug exposure.

*Non-melanoma Skin Cancer:* Hydrochlorothiazide is associated with an increased risk of

non-melanoma skin cancer. In a study conducted in the Sentinel System, increased risk was predominantly for squamous cell carcinoma (SCC) and in white patients taking large cumulative doses. The increased risk for SCC in the overall population was approximately 1 additional case per 16,000 patients per year, and for white patients taking a cumulative dose of  $\geq 50,000$ mg the risk increase was approximately 1 additional SCC case for every 6,700 patients per year.

## **OVERDOSAGE**

The most common signs and symptoms observed are those caused by electrolyte depletion (hypokalemia, hypochloremia, hyponatremia) and dehydration resulting from excessive diuresis. If digitalis has also been administered, hypokalemia may accentuate cardiac arrhythmias.

In the event of overdosage, symptomatic and supportive measures should be employed. Emesis should be induced or gastric lavage performed. Correct dehydration, electrolyte imbalance, hepatic coma and hypotension by established procedures. If required, give oxygen or artificial respiration for respiratory impairment. The degree to which hydrochlorothiazide is removed by hemodialysis has not been established.

The oral LD<sub>50</sub> of hydrochlorothiazide is greater than 10 g/kg in the mouse and rat.

## **DOSAGE AND ADMINISTRATION**

*For Control of Hypertension:* The adult initial dose of hydrochlorothiazide capsules is one capsule given once daily whether given alone or in combination with other antihypertensives. Total daily doses greater than 50 mg are not recommended.

## **HOW SUPPLIED**

Hydrochlorothiazide capsules USP, 12.5 mg are available as hard gelatin capsules with opaque white cap and opaque white body imprinted with "U" on cap and "130" on the body in grey ink along the horizontal axis

Bottle of 30: NDC 51655-522-52

Bottle of 90: NDC 51655-522-26

Store at 20 ° to 25 °C (68 ° to 77 °F) [see USP Controlled Room Temperature]. Protect from light, moisture, freezing, -20 °C (-4 °F). Keep container tightly closed.

## **Rx only**

**Please address medical inquiries to Unichem's toll free # 1-866-562-4616.**

Manufactured by:

## **UNICHEM LABORATORIES LTD.**

Pilerne Ind. Estate, Pilerne,

Bardez, Goa 403 511, India

Manufactured for:



**UNICHEM**  
PHARMACEUTICALS (USA), INC.

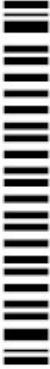

East Brunswick, NJ 08816

13013006

08-R-09/2020

**PRINCIPAL DISPLAY PANEL**

**NDC: 51655-522-52**

|  |   |  |
|--|---|--|
|  | <p><b>NDC: 51655-522-52</b><br/><b>Hydrochlorothiazide</b><br/><b>Capsules, USP</b><br/><b>12.5mg</b><br/><b>30 Capsules</b><br/><b>Rx Only</b></p> <p>Dosage: See package insert<br/>Store at 20° - 25°C (68° - 77°F) (See USP Controlled Room Temperature)</p> <p>Keep out of the reach of children.<br/>Store in original container.<br/>Protect from light, moisture and freezing -20°C (-4°F).</p> | <p>LCN#: 00<br/>Rev. A 06/22</p>   |
|  | <p>Each capsule contains: Hydrochlorothiazide USP 12.5mg.<br/>           Repackaged From: 29300-130-XX<br/>           Unichem Pharmaceuticals (USA), Inc., Lot 0000000000<br/>           Repackaged By: Northwind Pharmaceuticals Indianapolis, IN 46203<br/>           GTIN: 00351655522523<br/>           S/N: 0000000000000000<br/>           EXP: 00/00/0000<br/>           LOT: 0000000000</p>     |  |

**HYDROCHLOROTHIAZIDE**

hydrochlorothiazide capsule

**Product Information**

|                                |                         |                           |                              |
|--------------------------------|-------------------------|---------------------------|------------------------------|
| <b>Product Type</b>            | HUMAN PRESCRIPTION DRUG | <b>Item Code (Source)</b> | NDC:51655-522(NDC:29300-130) |
| <b>Route of Administration</b> | ORAL                    |                           |                              |

**Active Ingredient/Active Moiety**

| Ingredient Name   | Basis of Strength   | Strength |
|---|---------------------|----------|
| <b>HYDROCHLOROTHIAZIDE</b> (UNII: 0J48LPH2TH) (HYDROCHLOROTHIAZIDE - UNII:0J48LPH2TH) | HYDROCHLOROTHIAZIDE | 12.5 mg  |

**Inactive Ingredients**



| Ingredient Name                                | Strength |
|--|----------|
| CELLULOSE, MICROCRYSTALLINE (UNII: OP1R32D61U) |          |
| FERROSO FERRIC OXIDE (UNII: XM0M87F357)        |          |
| GELATIN (UNII: 2G86QN327L)                     |          |
| MAGNESIUM STEARATE (UNII: 70097M6I30)          |          |
| SILICON DIOXIDE (UNII: ETJ7Z6XBU4)             |          |
| SODIUM LAURYL SULFATE (UNII: 368GB5141J)       |          |
| STARCH, CORN (UNII: O8232NY3SJ)                |          |
| TITANIUM DIOXIDE (UNII: 15FIX9V2JP)            |          |

### Product Characteristics

|          |         |              |          |
|----------|---------|--------------|----------|
| Color    | white   | Score        | no score |
| Shape    | CAPSULE | Size         | 16mm     |
| Flavor   |         | Imprint Code | U;130    |
| Contains |         |              |          |

### Packaging

| # | Item Code        | Package Description  | Marketing Start Date | Marketing End Date |
|---|------------------|--|----------------------|--------------------|
| 1 | NDC:51655-522-52 | 30 in 1 BOTTLE, PLASTIC; Type 0: Not a Combination Product | 06/29/2022           |                    |
| 2 | NDC:51655-522-26 | 90 in 1 BOTTLE, PLASTIC; Type 0: Not a Combination Product | 09/08/2022           |                    |

### Marketing Information

| Marketing Category | Application Number or Monograph Citation | Marketing Start Date | Marketing End Date |
|--------------------|--|----------------------|--------------------|
| ANDA               | ANDA090510                               | 06/29/2022           |                    |

**Labeler** - Northwind Pharmaceuticals (036986393)

**Registrant** - Northwind Pharmaceuticals (036986393)

### Establishment

| Name                      | Address | ID/FEI    | Business Operations |
|---------------------------|---------|-----------|---------------------|
| Northwind Pharmaceuticals |         | 036986393 | repack(51655-522)   |

Revised: 1/2023

Northwind Pharmaceuticals