

**AMBRISENTAN- ambrisentan tablet, film coated**  
**Sigmapharm Laboratories, LLC**

-----

**HIGHLIGHTS OF PRESCRIBING INFORMATION**

**These highlights do not include all the information needed to use AMBRISENTAN TABLETS safely and effectively. See full prescribing information for AMBRISENTAN TABLETS.**

**AMBRISENTAN Tablets, for oral use**

**Initial U.S. Approval: 2007**

**WARNING: EMBRYO-FETAL TOXICITY**

*See full prescribing information for complete boxed warning.*

- **Do not administer ambrisentan to a pregnant female because it may cause fetal harm ( 4.1, 5.1, 8.1).**
- **Females of reproductive potential: Exclude pregnancy before the start of treatment, monthly during treatment, and 1 month after stopping treatment. Prevent pregnancy during treatment and for one month after stopping treatment by using acceptable methods of contraception ( 2.2, 8.3).**
- **For all female patients, ambrisentan is available only through a restricted program called the Ambrisentan Risk Evaluation and Mitigation Strategy (REMS) ( 5.2).**

----- **INDICATIONS AND USAGE** -----

Ambrisentan is an endothelin receptor antagonist indicated for the treatment of pulmonary arterial hypertension (PAH) (WHO Group 1):

- To improve exercise ability and delay clinical worsening.
- In combination with tadalafil to reduce the risks of disease progression and hospitalization for worsening PAH, and to improve exercise ability.

Studies establishing effectiveness included trials predominantly in patients with WHO Functional Class II-III symptoms and etiologies of idiopathic or heritable PAH (60%) or PAH associated with connective tissue diseases (34%) ( 1).

----- **DOSAGE AND ADMINISTRATION** -----

- Initiate treatment at 5 mg once daily ( 2.1).
- May be started with tadalafil ( 2.1).
- Titrate at 4-week intervals as needed and tolerated ( 2.1).
- Do not split, crush, or chew tablets ( 2.1).

----- **DOSAGE FORMS AND STRENGTHS** -----

Tablet: 5 mg and 10 mg ( 3)

----- **CONTRAINDICATIONS** -----

- Pregnancy ( 4.1)
- Idiopathic Pulmonary Fibrosis ( 4.2)

----- **WARNINGS AND PRECAUTIONS** -----

- Fluid retention may require intervention ( 5.3).
- If patients develop acute pulmonary edema during initiation of therapy with ambrisentan, consider underlying pulmonary veno-occlusive disease and discontinue treatment if necessary ( 5.4).
- Decreases in sperm count have been observed in patients taking endothelin receptor antagonists (

5.5).

- Decreases in hemoglobin have been observed within the first few weeks; measure hemoglobin at initiation, at 1 month, and periodically thereafter ( 5.6).

---

#### **ADVERSE REACTIONS**

---

- Most common adverse reactions (>3% compared to placebo) are peripheral edema, nasal congestion, sinusitis, and flushing ( 6.1).
- When used in combination with tadalafil, most common adverse reactions (>5% compared with either Monotherapy) are peripheral edema, headache, nasal congestion, cough, anemia, dyspepsia, and bronchitis ( 6.1).

**To report SUSPECTED ADVERSE REACTIONS, contact Sigmapharm Laboratories, LLC, Pharmacovigilance at 1-855-332-0731 or FDA at 1-800-FDA-1088 or [www.fda.gov/medwatch](http://www.fda.gov/medwatch).**

---

#### **DRUG INTERACTIONS**

---

Cyclosporine increases ambrisentan exposure; limit ambrisentan dose to 5 mg once daily ( 7).

---

#### **USE IN SPECIFIC POPULATIONS**

---

- Breastfeeding: Choose ambrisentan or breastfeeding ( 8.2).
- Not recommended in patients with moderate or severe hepatic impairment ( 8.7).

**See 17 for PATIENT COUNSELING INFORMATION and Medication Guide.**

**Revised: 4/2019**

---

## **FULL PRESCRIBING INFORMATION: CONTENTS\***

### **WARNING: EMBRYO-FETAL TOXICITY**

### **1 INDICATIONS AND USAGE**

### **2 DOSAGE AND ADMINISTRATION**

#### **2.1. Adult Dosage**

#### **2.2. Pregnancy Testing in Females of Reproductive Potential**

### **3 DOSAGE FORMS AND STRENGTHS**

### **4 CONTRAINDICATIONS**

#### **4.1. Pregnancy**

#### **4.2. Idiopathic Pulmonary Fibrosis**

### **5 WARNINGS AND PRECAUTIONS**

#### **5.1. Embryo-fetal Toxicity**

#### **5.2. Ambrisentan REMS Program**

#### **5.3. Fluid Retention**

#### **5.4. Pulmonary Edema with Pulmonary Veno-occlusive Disease (PVOD)**

#### **5.5. Decreased Sperm Counts**

#### **5.6. Hematological Changes**

### **6 ADVERSE REACTIONS**

#### **6.1. Clinical Trials Experience**

#### **6.2. Postmarketing Experience**

### **7 DRUG INTERACTIONS**

### **8 USE IN SPECIFIC POPULATIONS**

#### **8.1. Pregnancy**

#### **8.2. Lactation**

#### **8.3. Females and Males of Reproductive Potential**

#### **8.4. Pediatric Use**

#### **8.5. Geriatric Use**

**8.6. Renal Impairment**  
**8.7. Hepatic Impairment**  
**10 OVERDOSAGE**  
**11 DESCRIPTION**  
**12 CLINICAL PHARMACOLOGY**  
    **12.1. Mechanism of Action**  
    **12.2. Pharmacodynamics**  
    **12.3. Pharmacokinetics**  
**13 NONCLINICAL TOXICOLOGY**  
    **13.1. Carcinogenesis, Mutagenesis, Impairment of Fertility**  
**14 CLINICAL STUDIES**  
    **14.1. Pulmonary Arterial Hypertension (PAH)**  
    **14.2. Combination Treatment of PAH**  
    **14.3. Long-term Treatment of PAH**  
    **14.4. Adverse Effects in Idiopathic Pulmonary Fibrosis (IPF)**  
**16 HOW SUPPLIED/STORAGE AND HANDLING**  
**17 PATIENT COUNSELING INFORMATION**

\* Sections or subsections omitted from the full prescribing information are not listed.

---

## FULL PRESCRIBING INFORMATION

### **WARNING: EMBRYO-FETAL TOXICITY**

**Do not administer ambrisentan to a pregnant female because it may cause fetal harm. Ambrisentan is very likely to produce serious birth defects if used by pregnant females, as this effect has been seen consistently when it is administered to animals [see *Contraindications (4.1), Warnings and Precautions (5.1), and Use in Specific Populations (8.1)*].**

**Exclude pregnancy before the initiation of treatment with ambrisentan. Females of reproductive potential must use acceptable methods of contraception during treatment with ambrisentan and for one month after treatment. Obtain monthly pregnancy tests during treatment and 1 month after discontinuation of treatment [see *Dosage and Administration (2.2) and Use in Specific Populations (8.3)*].**

**Because of the risk of embryo-fetal toxicity, females can only receive ambrisentan through a restricted program called the Ambrisentan REMS program [see *Warnings and Precautions (5.2)*].**

## **1 INDICATIONS AND USAGE**

Ambrisentan tablets are indicated for the treatment of pulmonary arterial hypertension (PAH) (WHO Group 1):

- To improve exercise ability and delay clinical worsening.

- In combination with tadalafil to reduce the risks of disease progression and hospitalization for worsening PAH, and to improve exercise ability [ *see Clinical Studies (14.2)*].

Studies establishing effectiveness included predominantly patients with WHO Functional Class II-III symptoms and etiologies of idiopathic or heritable PAH (60%) or PAH associated with connective tissue diseases (34%).

## **2 DOSAGE AND ADMINISTRATION**

### **2.1. Adult Dosage**

Initiate treatment at 5 mg once daily, with or without tadalafil 20 mg once daily. At 4-week intervals, either the dose of ambrisentan or tadalafil can be increased, as needed and tolerated, to ambrisentan tablets, 10 mg or tadalafil 40 mg.

Do not split, crush, or chew tablets.

### **2.2. Pregnancy Testing in Females of Reproductive Potential**

Initiate treatment with ambrisentan in females of reproductive potential only after a negative pregnancy test. Obtain monthly pregnancy tests during treatment [ *see Use in Specific Populations (8.3)* ] .

## **3 DOSAGE FORMS AND STRENGTHS**

5 mg and 10 mg film-coated tablets for oral administration

- Each 5 mg tablet is square shaped, light pink, with “Σ” on one side and “51” on the other side.
- Each 10 mg tablet is oval shaped, dark pink, with “Σ” on one side and “52” on the other side.

## **4 CONTRAINDICATIONS**

### **4.1. Pregnancy**

Ambrisentan may cause fetal harm when administered to a pregnant female. Ambrisentan is contraindicated in females who are pregnant. Ambrisentan was consistently shown to have teratogenic effects when administered to animals. If this drug is used during pregnancy, or if the patient becomes pregnant while taking this drug, the patient should be apprised of the potential hazard to a fetus [ *see Warnings and Precautions (5.1, 5.2) and Use in Specific Populations (8.1)* ] .

### **4.2. Idiopathic Pulmonary Fibrosis**

Ambrisentan is contraindicated in patients with Idiopathic Pulmonary Fibrosis (IPF), including IPF patients with pulmonary hypertension (WHO Group 3) [ *see Clinical Studies (14.4)* ] .

## **5 WARNINGS AND PRECAUTIONS**

### **5.1. Embryo-fetal Toxicity**

Ambrisentan may cause fetal harm when administered during pregnancy and is contraindicated for use in females who are pregnant. In females of reproductive potential, exclude pregnancy prior to initiation of therapy, ensure use of acceptable contraceptive methods, and obtain monthly pregnancy tests [see *Dosage and Administration (2.2)*, and *Use in Specific Populations (8.1, 8.3)*].

Ambrisentan is only available for females through a restricted program under a REMS [see *Warnings and Precautions (5.2)*].

### **5.2. Ambrisentan REMS Program**

For all females, ambrisentan is available only through a restricted program called the Ambrisentan REMS, because of the risk of embryo-fetal toxicity [see *Contraindications (4.1)*, *Warnings and Precautions (5.1)*, and *Use in Specific Populations (8.1, 8.3)*].

Notable requirements of the Ambrisentan REMS program include the following:

- Prescribers must be certified with the program by enrolling and completing training.
- All females, regardless of reproductive potential, must enroll in the Ambrisentan REMS program prior to initiating ambrisentan. Male patients are not enrolled in the REMS.
  - Females of reproductive potential must comply with the pregnancy testing and contraception requirements [see *Use in Specific Populations (8.3)*].
- Pharmacies that dispense ambrisentan must be certified with the program and must dispense to female patients who are authorized to receive ambrisentan.

Further information is available at [www.ambrisentanrems.us.com](http://www.ambrisentanrems.us.com) or 1-888-417-3172.

### **5.3. Fluid Retention**

Peripheral edema is a known class effect of endothelin receptor antagonists, and is also a clinical consequence of PAH and worsening PAH. In the placebo-controlled studies, there was an increased incidence of peripheral edema in patients treated with doses of 5 or 10 mg ambrisentan compared to placebo [see *Adverse Reactions (6.1)*]. Most edema was mild to moderate in severity.

In addition, there have been postmarketing reports of fluid retention in patients with pulmonary hypertension, occurring within weeks after starting ambrisentan. Patients required intervention with a diuretic, fluid management, or, in some cases, hospitalization for decompensating heart failure.

If clinically significant fluid retention develops, with or without associated weight gain, further evaluation should be undertaken to determine the cause, such as ambrisentan or underlying heart failure, and the possible need for specific treatment or discontinuation of ambrisentan therapy.

Peripheral edema/fluid retention is more common with ambrisentan plus tadalafil than with ambrisentan or tadalafil alone.

### **5.4. Pulmonary Edema with Pulmonary Veno-occlusive Disease (PVOD)**

If patients develop acute pulmonary edema during initiation of therapy with vasodilating agents such as ambrisentan, the possibility of PVOD should be considered, and if confirmed ambrisentan should be discontinued.

### **5.5. Decreased Sperm Counts**

Decreased sperm counts have been observed in human and animal studies with another endothelin receptor antagonist and in animal fertility studies with ambrisentan. Ambrisentan may have an adverse effect on spermatogenesis. Counsel patients about potential effects on fertility [see *Use in Specific Populations (8.6) and Nonclinical Toxicology (13.1)*].

### **5.6. Hematological Changes**

Decreases in hemoglobin concentration and hematocrit have followed administration of other endothelin receptor antagonists and were observed in clinical studies with ambrisentan. These decreases were observed within the first few weeks of treatment with ambrisentan, and stabilized thereafter. The mean decrease in hemoglobin from baseline to end of treatment for those patients receiving ambrisentan in the 12-week placebo-controlled studies was 0.8 g/dL.

Marked decreases in hemoglobin (>15% decrease from baseline resulting in a value below the lower limit of normal) were observed in 7% of all patients receiving ambrisentan (and 10% of patients receiving 10 mg) compared to 4% of patients receiving placebo. The cause of the decrease in hemoglobin is unknown, but it does not appear to result from hemorrhage or hemolysis.

In the long-term open-label extension of the two pivotal clinical studies, mean decreases from baseline (ranging from 0.9 to 1.2 g/dL) in hemoglobin concentrations persisted for up to 4 years of treatment.

There have been postmarketing reports of decreases in hemoglobin concentration and hematocrit that have resulted in anemia requiring transfusion.

Measure hemoglobin prior to initiation of ambrisentan, at one month, and periodically thereafter. Initiation of ambrisentan therapy is not recommended for patients with clinically significant anemia. If a clinically significant decrease in hemoglobin is observed and other causes have been excluded, consider discontinuing ambrisentan.

## **6 ADVERSE REACTIONS**

Clinically significant adverse reactions that appear in other sections of the labeling include:

- Embryo-fetal Toxicity [see *Warnings and Precautions (5.1), Use in Specific Populations (8.1)*]
- Fluid Retention [see *Warnings and Precautions (5.3)*]
- Pulmonary Edema with PVOD [see *Warnings and Precautions (5.4)*]
- Decreased Sperm Count [see *Warnings and Precautions (5.5)*]
- Hematologic Changes [see *Warnings and Precautions (5.6)*]

### **6.1. Clinical Trials Experience**

Because clinical trials are conducted under widely varying conditions, adverse reaction

rates observed in the clinical trials of a drug cannot be directly compared to rates in the clinical trials of another drug and may not reflect the rates observed in practice.

Safety data for ambrisentan are presented from two 12-week, placebo-controlled studies (ARIES-1 and ARIES-2) in patients with pulmonary arterial hypertension (PAH), and one randomized, double-blind, active-controlled trial in 605 patients with PAH (AMBITION) comparing ambrisentan plus tadalafil to ambrisentan or tadalafil alone. The exposure to ambrisentan in these studies ranged from 1 day to 4 years (N=357 for at least 6 months and N=279 for at least 1 year).

In ARIES-1 and ARIES-2, a total of 261 patients received ambrisentan at doses of 2.5, 5, or 10 mg once daily and 132 patients received placebo. The adverse reactions that occurred in >3% more patients receiving ambrisentan than receiving placebo are shown in Table 1.

**Table 1 Adverse Reactions with Placebo-Adjusted Rates >3% in ARIES-1 and ARIES-2**

Adverse Reaction	Placebo (N = 132)	Ambrisentan (N = 261)	
	n (%)	n (%)	Placebo-adjusted (%)
Peripheral edema	14 (11)	45 (17)	6
Nasal congestion	2 (2)	15 (6)	4
Sinusitis	0 (0)	8 (3)	3
Flushing	1 (1)	10 (4)	3

Most adverse drug reactions were mild to moderate and only nasal congestion was dose-dependent.

Few notable differences in the incidence of adverse reactions were observed for patients by age or sex. Peripheral edema was similar in younger patients (<65 years) receiving ambrisentan (14%; 29/205) or placebo (13%; 13/104), and was greater in elderly patients ( $\geq$ 65 years) receiving ambrisentan (29%; 16/56) compared to placebo (4%; 1/28). The results of such subgroup analyses must be interpreted cautiously.

The incidence of treatment discontinuations due to adverse events other than those related to PAH during the clinical trials in patients with PAH was similar for ambrisentan (2%; 5/261 patients) and placebo (2%; 3/132 patients). The incidence of patients with serious adverse events other than those related to PAH during the clinical trials in patients with PAH was similar for placebo (7%; 9/132 patients) and for ambrisentan (5%; 13/261 patients).

During 12-week controlled clinical trials, the incidence of aminotransferase elevations >3 x upper limit of normal (ULN) were 0% on ambrisentan and 2.3% on placebo. In practice, cases of hepatic injury should be carefully evaluated for cause.

#### Combination Use with Tadalafil

The mean exposure to ambrisentan + tadalafil in the AMBITION study was 78.7 weeks. The adverse reactions that occurred in >5% more patients receiving ambrisentan + tadalafil than receiving ambrisentan or tadalafil monotherapy in AMBITION are shown in Table 2.

**Table 2 Adverse Reactions Reported More Commonly (>5%) on Ambrisentan + Tadalafil than on Ambrisentan or Tadalafil Monotherapy (ITT) in AMBITION**

<b>Adverse Reactions</b>	<b>Ambrisentan + Tadalafil Combination Therapy (N=302) n (%)</b>	<b>Ambrisentan Monotherapy (N=152) n (%)</b>	<b>Tadalafil Monotherapy (N=151) n (%)</b>
Peripheral edema	135 (45%)	58 (38%)	43 (28%)
Headache	125 (41%)	51 (34%)	53 (35%)
Nasal congestion	58 (19%)	25 (16%)	17 (11%)
Cough	53 (18%)	20 (13%)	24 (16%)
Anemia	44 (15%)	11 (7%)	17 (11%)
Dyspepsia	32 (11%)	5 (3%)	18 (12%)
Bronchitis	31 (10%)	6 (4%)	13 (9%)

Peripheral edema was more frequent on combination therapy; however, there was no notable difference observed in the incidence of peripheral edema in elderly patients ( $\geq 65$  years) versus younger patients ( $< 65$  years) on combination therapy (44% vs. 45%) or ambrisentan monotherapy (37% vs. 39%) in AMBITION.

Treatment discontinuations due to adverse events while on randomized treatment were similar across treatment groups: 16% for ambrisentan + tadalafil, 14% for ambrisentan alone, and 13% for tadalafil alone.

*Use in Patients with Prior Endothelin Receptor Antagonist (ERA) Related Serum Liver Enzyme Abnormalities*

In an uncontrolled, open-label study, 36 patients who had previously discontinued endothelin receptor antagonists (ERAs: bosentan, an investigational drug, or both) due to aminotransferase elevations  $> 3 \times$  ULN were treated with ambrisentan. Prior elevations were predominantly moderate, with 64% of the ALT elevations  $< 5 \times$  ULN, but 9 patients had elevations  $> 8 \times$  ULN. Eight patients had been re-challenged with bosentan and/or the investigational ERA and all eight had a recurrence of aminotransferase abnormalities that required discontinuation of ERA therapy. All patients had to have normal aminotransferase levels on entry to this study. Twenty-five of the 36 patients were also receiving prostanoid and/or phosphodiesterase type 5 (PDE5) inhibitor therapy. Two patients discontinued early (including one of the patients with a prior  $8 \times$  ULN elevation). Of the remaining 34 patients, one patient experienced a mild aminotransferase elevation at 12 weeks on ambrisentan 5 mg that resolved with decreasing the dosage to 2.5 mg, and that did not recur with later escalations to 10 mg. With a median follow-up of 13 months and with 50% of patients increasing the dose of ambrisentan to 10 mg, no patients were discontinued for aminotransferase elevations. While the uncontrolled study design does not provide information about what would have occurred with re-administration of previously used ERAs or show that ambrisentan led to fewer aminotransferase elevations than would have been seen with those drugs,



the study indicates that ambrisentan may be tried in patients who have experienced asymptomatic aminotransferase elevations on other ERAs after aminotransferase levels have returned to normal.

## 6.2. Postmarketing Experience

The following adverse reactions were identified during post-approval use of ambrisentan. Because these reactions were reported voluntarily from a population of uncertain size, it is not possible to estimate reliably the frequency or to establish a causal relationship to drug exposure: anemia requiring transfusion [see *Warnings and Precautions (5.6)*] heart failure (associated with fluid retention), symptomatic hypotension, and hypersensitivity (e.g., angioedema, rash).

Elevations of liver aminotransferases (ALT, AST) have been reported with ambrisentan use; in most cases alternative causes of the liver injury could be identified (heart failure, hepatic congestion, hepatitis, alcohol use, hepatotoxic medications). Other endothelin receptor antagonists have been associated with elevations of aminotransferases, hepatotoxicity, and cases of liver failure [see *Adverse Reactions (6.1)*].

To report **SUSPECTED ADVERSE REACTIONS**, contact Sigmapharm Laboratories, LLC, Pharmacovigilance at 1-855-332-0731 or FDA at 1-800-FDA-1088 or [www.fda.gov/medwatch](http://www.fda.gov/medwatch).

## 7 DRUG INTERACTIONS

Multiple dose coadministration of ambrisentan and cyclosporine resulted in an approximately 2-fold increase in ambrisentan exposure in healthy volunteers; therefore, limit the dose of ambrisentan to 5 mg once daily when coadministered with cyclosporine [see *Clinical Pharmacology (12.3)*].

## 8 USE IN SPECIFIC POPULATIONS

### 8.1. Pregnancy

#### Risk Summary

Based on data from animal reproduction studies, ambrisentan tablets may cause fetal harm when administered to a pregnant woman and is contraindicated during pregnancy. There are limited data on ambrisentan tablets use in pregnant women. In animal reproduction studies, ambrisentan tablets were teratogenic in rats and rabbits at doses which resulted in exposures of 3.5 and 1.7 times, respectively, the human dose of 10 mg per day [see *Animal Data*]. If this drug is used during pregnancy, or if the patient becomes pregnant while taking this drug, advise the patient of the potential hazard to a fetus [see *Contraindications (4.1)*, *Warnings and Precautions (5.1)*].

The estimated background risk of major birth defects and miscarriage for the indicated population is unknown. All pregnancies have a background risk of birth defect, loss, or other adverse outcomes. In the U.S. general population, the estimated background risk of major birth defects and miscarriage in clinically recognized pregnancies is 2-4% and 15-20%, respectively.

#### Data

## *Animal Data*

Ambrisentan was teratogenic at oral dosages of  $\geq 15$  mg/kg/day (AUC 51.7 h• $\mu$ g/mL) in rats and  $\geq 7$  mg/kg/day (24.7 h• $\mu$ g/mL) in rabbits; it was not studied at lower dosages. These dosages are of 3.5 and 1.7 times, respectively, the human dose of 10 mg per day (14.8 h• $\mu$ g/mL) based on AUC. In both species, there were abnormalities of the lower jaw and hard and soft palate, malformation of the heart and great vessels, and failure of formation of the thymus and thyroid.

A preclinical study in rats has shown decreased survival of newborn pups (mid and high dosages) and effects on testicle size and fertility of pups (high dosage) following maternal treatment with ambrisentan from late gestation through weaning. The mid and high dosages were 51 x, and 170 x (on a mg/m<sup>2</sup> body surface area basis) the maximum oral human dose of 10 mg and an average adult body weight of 70 kg. These effects were absent at a maternal dosage 17 x the human dose based on mg/m<sup>2</sup>.

## **8.2. Lactation**

### Risk Summary

It is not known whether ambrisentan is present in human milk. Because many drugs are present in human milk and because of the potential for serious adverse reactions in breastfed infants from ambrisentan, a decision should be made whether to discontinue breastfeeding or discontinue ambrisentan, taking into account the importance of the drug to the mother.

## **8.3. Females and Males of Reproductive Potential**

### Pregnancy Testing

Female patients of reproductive potential must have a negative pregnancy test prior to initiation of treatment, monthly pregnancy test during treatment, and pregnancy test 1 month after stopping treatment with ambrisentan. Advise patients to contact their healthcare provider if they become pregnant or suspect they may be pregnant. Perform a pregnancy test if pregnancy is suspected for any reason. For positive pregnancy tests, counsel patient on the potential risk to the fetus and patient options [see *Boxed Warning and Dosage and Administration (2.2)*].

### Contraception

Female patients of reproductive potential must use acceptable methods of contraception during treatment with ambrisentan and for 1 month after stopping treatment with ambrisentan. Patients may choose one highly effective form of contraception (intrauterine device [IUD], contraceptive implant, or tubal sterilization) or a combination of methods (hormone method with a barrier method or two barrier methods). If a partner's vasectomy is the chosen method of contraception, a hormone or barrier method must be used along with this method. Counsel patients on pregnancy planning and prevention, including emergency contraception, or designate counseling by another healthcare provider trained in contraceptive counseling [see *Boxed Warning*].

### Infertility

#### *Males*

In a 6-month study of another endothelin receptor antagonist, bosentan, 25 male

patients with WHO functional class III and IV PAH and normal baseline sperm count were evaluated for effects on testicular function. There was a decline in sperm count of at least 50% in 25% of the patients after 3 or 6 months of treatment with bosentan. One patient developed marked oligospermia at 3 months, and the sperm count remained low with 2 follow-up measurements over the subsequent 6 weeks. Bosentan was discontinued and after 2 months the sperm count had returned to baseline levels. In 22 patients who completed 6 months of treatment, sperm count remained within the normal range and no changes in sperm morphology, sperm motility, or hormone levels were observed. Based on these findings and preclinical data [see *Nonclinical Toxicology (13.1)*] from endothelin receptor antagonists, it cannot be excluded that endothelin receptor antagonists such as ambrisentan have an adverse effect on spermatogenesis. Counsel patients about the potential effects on fertility [see *Warnings and Precautions (5.5)*].

#### **8.4. Pediatric Use**

Safety and effectiveness of ambrisentan in pediatric patients have not been established.

##### Juvenile Animal Data

In juvenile rats administered ambrisentan orally once daily during postnatal day 7 to 26, 36, or 62, a decrease in brain weight (-3% to -8%) with no morphologic or neurobehavioral changes occurred after breathing sounds, apnea, and hypoxia were observed, at exposures approximately 1.8 to 7.0 times human pediatric exposures at 10 mg, based on AUC.

#### **8.5. Geriatric Use**

In the two placebo-controlled clinical studies of ambrisentan, 21% of patients were  $\geq 65$  years old and 5% were  $\geq 75$  years old. The elderly (age  $\geq 65$  years) showed less improvement in walk distances with ambrisentan than younger patients did, but the results of such subgroup analyses must be interpreted cautiously. Peripheral edema was more common in the elderly than in younger patients.

#### **8.6. Renal Impairment**

The impact of renal impairment on the pharmacokinetics of ambrisentan has been examined using a population pharmacokinetic approach in PAH patients with creatinine clearances ranging between 20 and 150 mL/min. There was no significant impact of mild or moderate renal impairment on exposure to ambrisentan [see *Clinical Pharmacology (12.3)*]. Dose adjustment of ambrisentan in patients with mild or moderate renal impairment is therefore not required. There is no information on the exposure to ambrisentan in patients with severe renal impairment.

The impact of hemodialysis on the disposition of ambrisentan has not been investigated.

#### **8.7. Hepatic Impairment**

##### Pre-existing Hepatic Impairment

The influence of pre-existing hepatic impairment on the pharmacokinetics of ambrisentan has not been evaluated. Because there is in vitro and in vivo evidence of significant metabolic and biliary contribution to the elimination of ambrisentan, hepatic impairment might be expected to have significant effects on the pharmacokinetics of

ambrisentan [see *Clinical Pharmacology (12.3)*]. Ambrisentan is not recommended in patients with moderate or severe hepatic impairment. There is no information on the use of ambrisentan in patients with mild pre-existing impaired liver function; however, exposure to ambrisentan may be increased in these patients.

### Elevation of Liver Transaminases

Other endothelin receptor antagonists (ERAs) have been associated with aminotransferase (AST, ALT) elevations, hepatotoxicity, and cases of liver failure [see *Adverse Reactions (6.1, 6.2)*]. In patients who develop hepatic impairment after ambrisentan initiation, the cause of liver injury should be fully investigated. Discontinue ambrisentan if elevations of liver aminotransferases are  $>5 \times$  ULN or if elevations are accompanied by bilirubin  $>2 \times$  ULN, or by signs or symptoms of liver dysfunction and other causes are excluded.

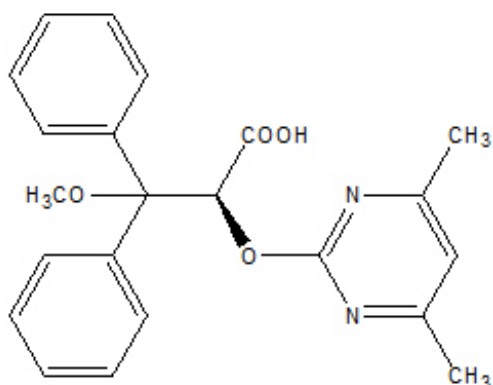
## 10 OVERDOSAGE

There is no experience with overdosage of ambrisentan. The highest single dose of ambrisentan administered to healthy volunteers was 100 mg, and the highest daily dose administered to patients with PAH was 10 mg once daily. In healthy volunteers, single doses of 50 mg and 100 mg (5 to 10 times the maximum recommended dose) were associated with headache, flushing, dizziness, nausea, and nasal congestion. Massive overdosage could potentially result in hypotension that may require intervention.

## 11 DESCRIPTION

Ambrisentan is an endothelin receptor antagonist that is selective for the endothelin type-A (ET<sub>A</sub>) receptor. The chemical name of ambrisentan is (+)-(2*S*)-2-[(4,6-dimethylpyrimidin-2-yl)oxy]-3-methoxy-3,3-diphenylpropanoic acid. It has a molecular formula of C<sub>22</sub>H<sub>22</sub>N<sub>2</sub>O<sub>4</sub> and a molecular weight of 378.42. It contains a single chiral center determined to be the (*S*) configuration and has the following structural formula:

**Figure 1 Ambrisentan Structural Formula**



Ambrisentan is a white to off-white, crystalline solid. It is a carboxylic acid with a pK<sub>a</sub> of 4.0. Ambrisentan is practically insoluble in water and in aqueous solutions at low pH. Solubility increases in aqueous solutions at higher pH. In the solid state ambrisentan is very stable, is not hygroscopic, and is not light sensitive.

Ambrisentan tablets are available as 5 mg and 10 mg film-coated tablets for once daily

oral administration. The tablets include the following inactive ingredients: croscarmellose sodium, lactose monohydrate, magnesium stearate and microcrystalline cellulose. The tablets are film-coated with a coating material containing FD&C Red #40 aluminum lake, polyethylene glycol, polyvinyl alcohol, talc, and titanium dioxide. Ambrisentan tablets, 5 mg tablets also contain FD&C Blue #2. Each square shaped, light pink ambrisentan tablet contains 5 mg of ambrisentan. Each oval shaped, dark pink ambrisentan tablet contains 10 mg of ambrisentan. Ambrisentan tablets are unscored.

## **12 CLINICAL PHARMACOLOGY**

### **12.1. Mechanism of Action**

Endothelin-1 (ET-1) is a potent autocrine and paracrine peptide. Two receptor subtypes, ET<sub>A</sub> and ET<sub>B</sub>, mediate the effects of ET-1 in the vascular smooth muscle and endothelium. The primary actions of ET<sub>A</sub> are vasoconstriction and cell proliferation, while the predominant actions of ET<sub>B</sub> are vasodilation, antiproliferation, and ET-1 clearance.

In patients with PAH, plasma ET-1 concentrations are increased as much as 10-fold and correlate with increased mean right atrial pressure and disease severity. ET-1 and ET-1 mRNA concentrations are increased as much as 9-fold in the lung tissue of patients with PAH, primarily in the endothelium of pulmonary arteries. These findings suggest that ET-1 may play a critical role in the pathogenesis and progression of PAH.

Ambrisentan is a high-affinity ( $K_i=0.011$  nM) ET<sub>A</sub> receptor antagonist with a high selectivity for the ET<sub>A</sub> versus ET<sub>B</sub> receptor (>4000-fold). The clinical impact of high selectivity for ET<sub>A</sub> is not known.

### **12.2. Pharmacodynamics**

#### Cardiac Electrophysiology

In a randomized, positive- and placebo-controlled, parallel-group study, healthy subjects received either ambrisentan 10 mg daily followed by a single dose of 40 mg, placebo followed by a single dose of moxifloxacin 400 mg, or placebo alone. Ambrisentan 10 mg daily had no significant effect on the QTc interval. The 40 mg dose of ambrisentan increased mean QTc at  $t_{max}$  by 5 ms with an upper 95% confidence limit of 9 ms. For patients receiving ambrisentan 5–10 mg daily and not taking metabolic inhibitors, no significant QT prolongation is expected.

#### N-terminal pro-B-type natriuretic peptide (NT-proBNP)

In AMBITION [see *Clinical Studies (14.2)*], the decrease in NT-proBNP in patients on ambrisentan plus tadalafil was observed early (Week 4) and was sustained, with a reduction of 63% on ambrisentan plus tadalafil, 50% on ambrisentan alone, and 41% on tadalafil alone at Week 24.

### **12.3. Pharmacokinetics**

The pharmacokinetics of ambrisentan (S-ambrisentan) in healthy subjects is dose proportional. The absolute bioavailability of ambrisentan is not known. Ambrisentan is absorbed with peak concentrations occurring approximately 2 hours after oral administration in healthy subjects and PAH patients. Food does not affect its bioavailability. In vitro studies indicate that ambrisentan is a substrate of P-gp.

Ambrisentan is highly bound to plasma proteins (99%). The elimination of ambrisentan is predominantly by non-renal pathways, but the relative contributions of metabolism and biliary elimination have not been well characterized. In plasma, the AUC of 4-hydroxymethyl ambrisentan accounts for approximately 4% relative to parent ambrisentan AUC. The in vivo inversion of S-ambrisentan to R-ambrisentan is negligible. The mean oral clearance of ambrisentan is 38 mL/min and 19 mL/min in healthy subjects and in PAH patients, respectively. Although ambrisentan has a 15-hour terminal half-life, the mean trough concentration of ambrisentan at steady-state is about 15% of the mean peak concentration and the accumulation factor is about 1.2 after long-term daily dosing, indicating that the effective half-life of ambrisentan is about 9 hours.

## Drug Interactions

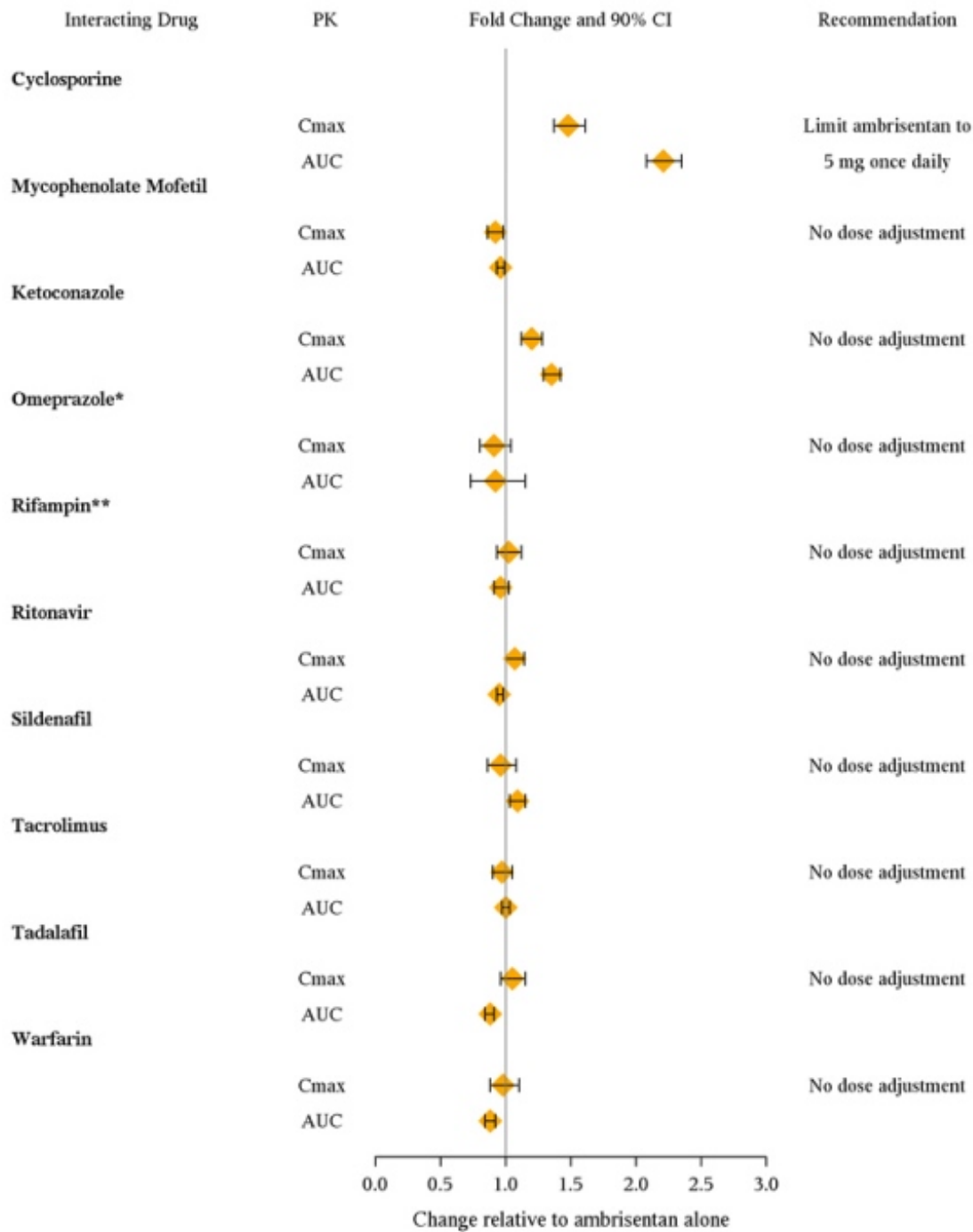
### *In Vitro Studies*

Studies with human liver tissue indicate that ambrisentan is metabolized by CYP3A, CYP2C19, and uridine 5'-diphosphate glucuronosyltransferases (UGTs) 1A9S, 2B7S, and 1A3S. In vitro studies suggest that ambrisentan is a substrate of the Organic Anion Transporting Polypeptides OATP1B1 and OATP1B3, and P-glycoprotein (P-gp). Drug interactions might be expected because of these factors; however, a clinically relevant interaction has been demonstrated only with cyclosporine [see *Drug Interactions (7)*]. In vitro studies found ambrisentan to have little to no inhibition of human hepatic transporters. Ambrisentan demonstrated weak dose-dependent inhibition of OATP1B1, OATP1B3, and NTCP (IC<sub>50</sub> of 47 μM, 45 μM, and approximately 100 μM, respectively) and no transporter-specific inhibition of BSEP, BRCP, P-gp, or MRP2. Ambrisentan does not inhibit or induce drug metabolizing enzymes at clinically relevant concentrations.

### *In Vivo Studies*

The effects of other drugs on ambrisentan pharmacokinetics and the effects of ambrisentan on the exposure to other drugs are shown in Figure 2 and Figure 3, respectively.

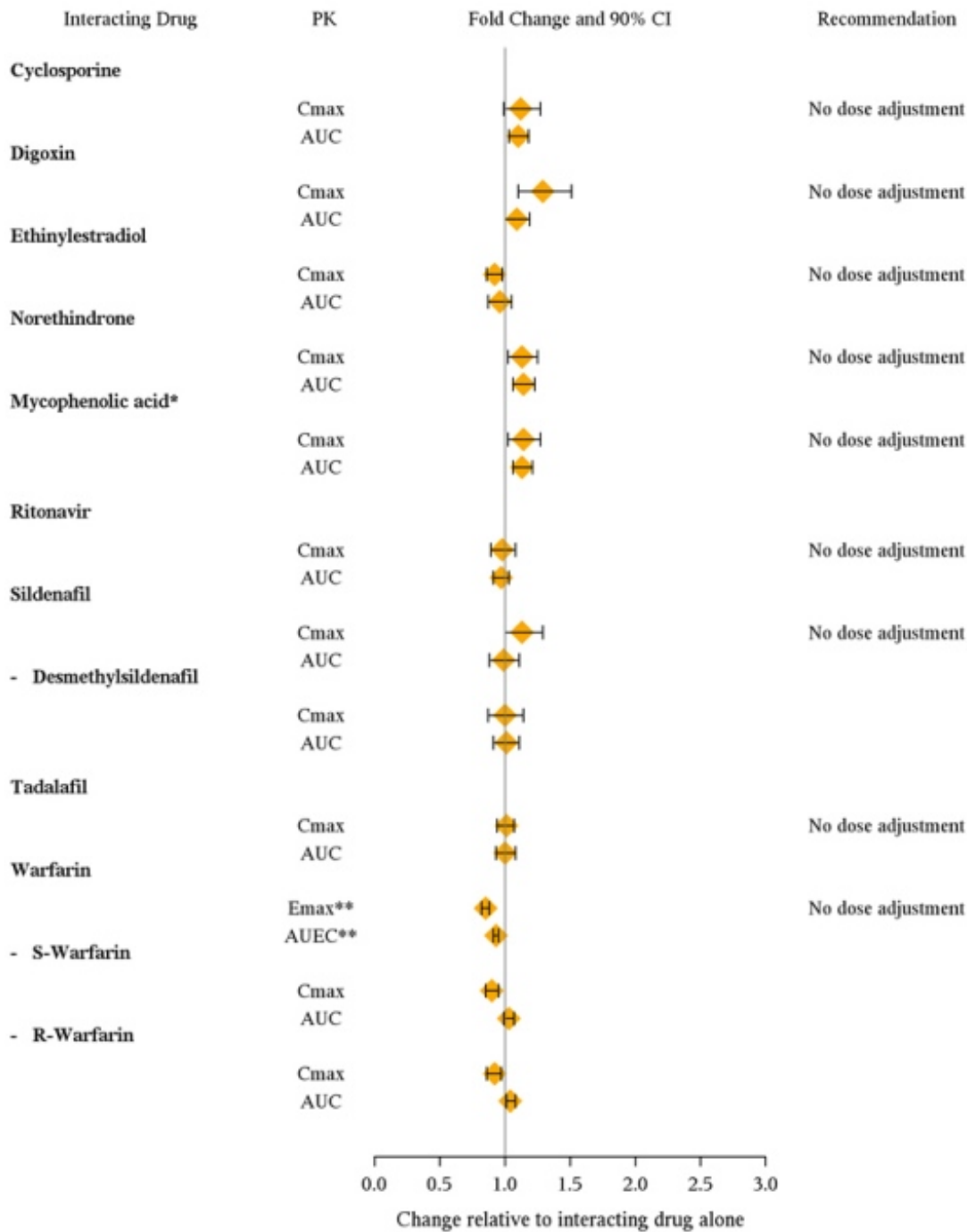
## **Figure 2 Effects of Other Drugs on Ambrisentan Pharmacokinetics**



\* Omeprazole: based on population pharmacokinetic analysis in PAH patients

\*\* Rifampin: AUC and C<sub>max</sub> were measured at steady-state. On Day 3 of coadministration a transient 2-fold increase in AUC was noted that was no longer evident by Day 7. Day 7 results are presented.

**Figure 3 Effects of Ambrisentan on Other Drugs**



\* Active metabolite of mycophenolate mofetil

\*\* GMR (95% CI) for INR

## 13 NONCLINICAL TOXICOLOGY

### 13.1. Carcinogenesis, Mutagenesis, Impairment of Fertility

Oral carcinogenicity studies of up to two years duration were conducted at starting doses of 10, 30, and 60 mg/kg/day in rats (8 to 48 times the maximum recommended human dose [MRHD] on a mg/m<sup>2</sup> basis) and at 50, 150, and 250 mg/kg/day in mice (28 to 140 times the MRHD). In the rat study, the high- and mid-dose male and female groups had their doses lowered to 40 and 20 mg/kg/day, respectively, in week 51



because of effects on survival. The high-dose males and females were taken off drug completely in weeks 69 and 93, respectively. The only evidence of ambrisentan-related carcinogenicity was a positive trend in male rats, for the combined incidence of benign basal cell tumor and basal cell carcinoma of skin/subcutis in the mid-dose group (high-dose group excluded from analysis), and the occurrence of mammary fibroadenomas in males in the high-dose group. In the mouse study, high-dose male and female groups had their doses lowered to 150 mg/kg/day in week 39 and were taken off drug completely in week 96 (males) or week 76 (females). In mice, ambrisentan was not associated with excess tumors in any dosed group.

Positive findings of clastogenicity were detected, at drug concentrations producing moderate to high toxicity, in the chromosome aberration assay in cultured human lymphocytes. There was no evidence for genetic toxicity of ambrisentan when tested in vitro in bacteria (Ames test) or in vivo in rats (micronucleus assay, unscheduled DNA synthesis assay).

The development of testicular tubular atrophy and impaired fertility has been linked to the chronic administration of endothelin receptor antagonists in rodents. Testicular tubular degeneration was observed in rats treated with ambrisentan for two years at doses  $\geq 10$  mg/kg/day (8-fold MRHD). Increased incidences of testicular findings were also observed in mice treated for two years at doses  $\geq 50$  mg/kg/day (28-fold MRHD). Effects on sperm count, sperm morphology, mating performance, and fertility were observed in fertility studies in which male rats were treated with ambrisentan at oral doses of 300 mg/kg/day (236-fold MRHD). At doses of  $\geq 10$  mg/kg/day, observations of testicular histopathology in the absence of fertility and sperm effects were also present.

## **14 CLINICAL STUDIES**

### **14.1. Pulmonary Arterial Hypertension (PAH)**

Two 12-week, randomized, double-blind, placebo-controlled, multicenter studies were conducted in 393 patients with PAH (WHO Group 1). The two studies were identical in design except for the doses of ambrisentan and the geographic region of the investigational sites. ARIES-1 compared once-daily doses of 5 mg and 10 mg ambrisentan to placebo, while ARIES-2 compared once-daily doses of 2.5 mg and 5 mg ambrisentan to placebo. In both studies, ambrisentan or placebo was added to current therapy, which could have included a combination of anticoagulants, diuretics, calcium channel blockers, or digoxin, but not epoprostenol, treprostinil, iloprost, bosentan, or sildenafil. The primary study endpoint was 6-minute walk distance. In addition, clinical worsening, WHO functional class, dyspnea, and SF-36<sup>®</sup> Health Survey were assessed.

Patients had idiopathic or heritable PAH (64%) or PAH associated with connective tissue diseases (32%), HIV infection (3%), or anorexigen use (1%). There were no patients with PAH associated with congenital heart disease.

Patients had WHO functional class I (2%), II (38%), III (55%), or IV (5%) symptoms at baseline. The mean age of patients was 50 years, 79% of patients were female, and 77% were Caucasian.

#### **Submaximal Exercise Ability**

Results of the 6-minute walk distance at 12 weeks for the ARIES-1 and ARIES-2 studies

are shown in Table 3 and Figure 4.

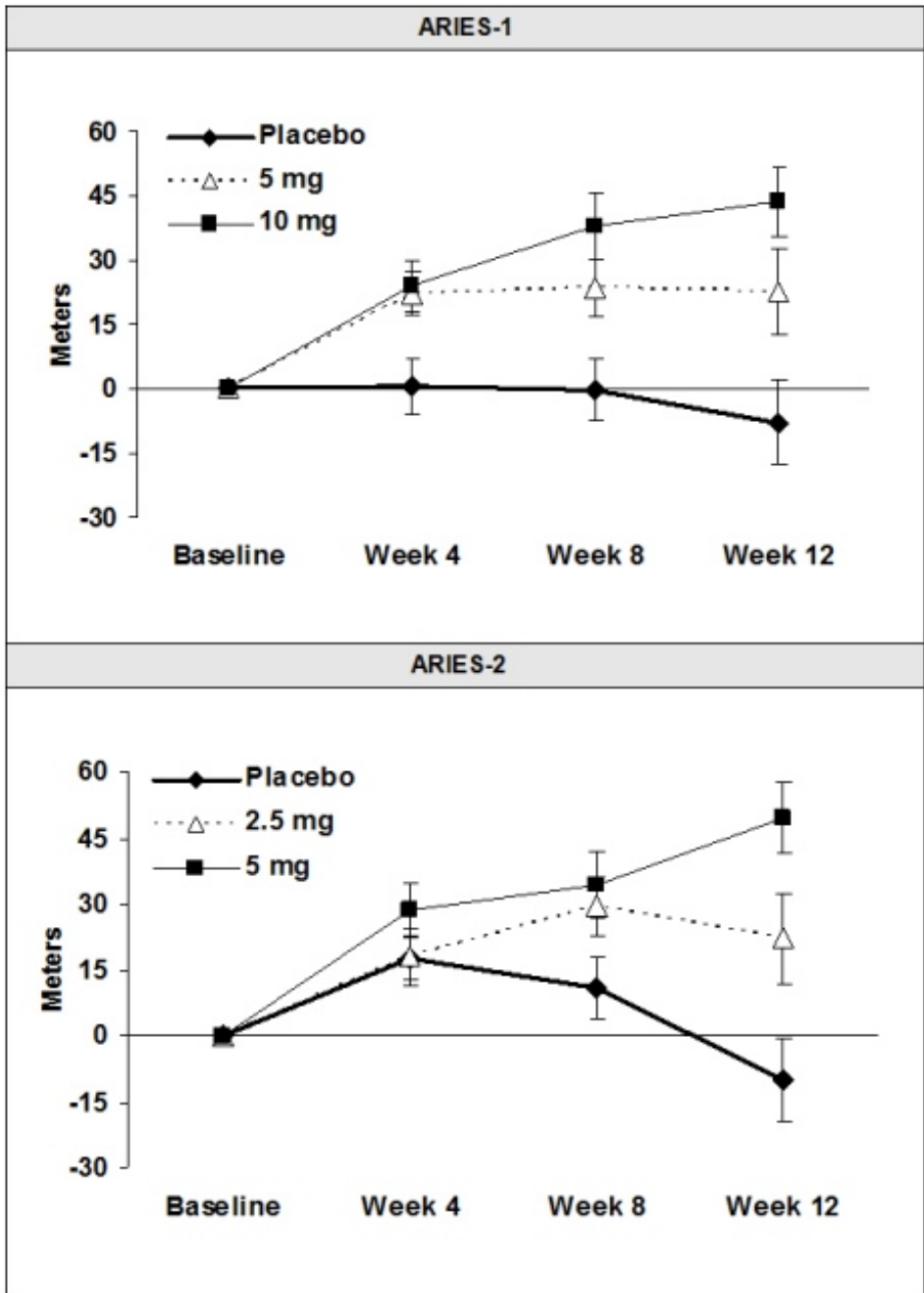
**Table 3 Changes from Baseline in 6-Minute Walk Distance (meters) (ARIES-1 and ARIES-2)**

	ARIES-1			ARIES-2		
	Placebo (N = 67)	5 mg (N = 67)	10 mg (N = 67)	Placebo (N = 65)	2.5 mg (N = 64)	5 mg (N = 63)
Baseline	342 ± 73	340 ± 77	342 ± 78	343 ± 86	347 ± 84	355 ± 84
Mean change from baseline	-8 ± 79	23 ± 83	44 ± 63	-10 ± 94	22 ± 83	49 ± 75
Placebo-adjusted mean change from baseline	-	31	51	-	32	59
Placebo-adjusted median change from baseline	-	27	39	-	30	45
p-value <sup>a</sup>	-	0.008	<0.001	-	0.022	<0.001

Mean ± standard deviation

<sup>a</sup> p-values are Wilcoxon rank sum test comparisons of ambrisentan to placebo at Week 12 stratified by idiopathic or heritable PAH and non-idiopathic, non-heritable PAH patients

**Figure 4 Mean Change in 6-Minute Walk Distance (ARIES-1 and ARIES-2)**



Mean change from baseline in 6-minute walk distance in the placebo and ambrisentan groups.

Values are expressed as mean  $\pm$  standard error of the mean.

In both studies, treatment with ambrisentan resulted in a significant improvement in 6-minute walk distance for each dose of ambrisentan and the improvements increased with dose. An increase in 6-minute walk distance was observed after 4 weeks of treatment with ambrisentan, with a dose-response observed after 12 weeks of treatment. Improvements in walk distance with ambrisentan were smaller for elderly patients (age  $\geq 65$ ) than younger patients and for patients with secondary PAH than for patients with idiopathic or heritable PAH. The results of such subgroup analyses must be interpreted cautiously.

**Clinical Worsening**

Time to clinical worsening of PAH was defined as the first occurrence of death, lung transplantation, hospitalization for PAH, atrial septostomy, study withdrawal due to the addition of other PAH therapeutic agents, or study withdrawal due to early escape. Early escape was defined as meeting two or more of the following criteria: a 20% decrease in the 6-minute walk distance; an increase in WHO functional class; worsening right ventricular failure; rapidly progressing cardiogenic, hepatic, or renal failure; or refractory systolic hypotension. The clinical worsening events during the 12-week treatment period of the ambrisentan clinical trials are shown in Table 4 and Figure 5.

**Table 4 Time to Clinical Worsening (ARIES-1 and ARIES-2)**

	<b>ARIES-1</b>		<b>ARIES-2</b>	
	<b>Placebo (N = 67)</b>	<b>Ambrisentan (N=134)</b>	<b>Placebo (N =65)</b>	<b>Ambrisentan (N = 127)</b>
Clinical worsening, no. (%)	7 (10%)	4 (3%)	13 (22%)	8 (6%)
Hazard ratio	-	0.28	-	0.30
p-value, Log-rank test	-	0.030	-	0.005

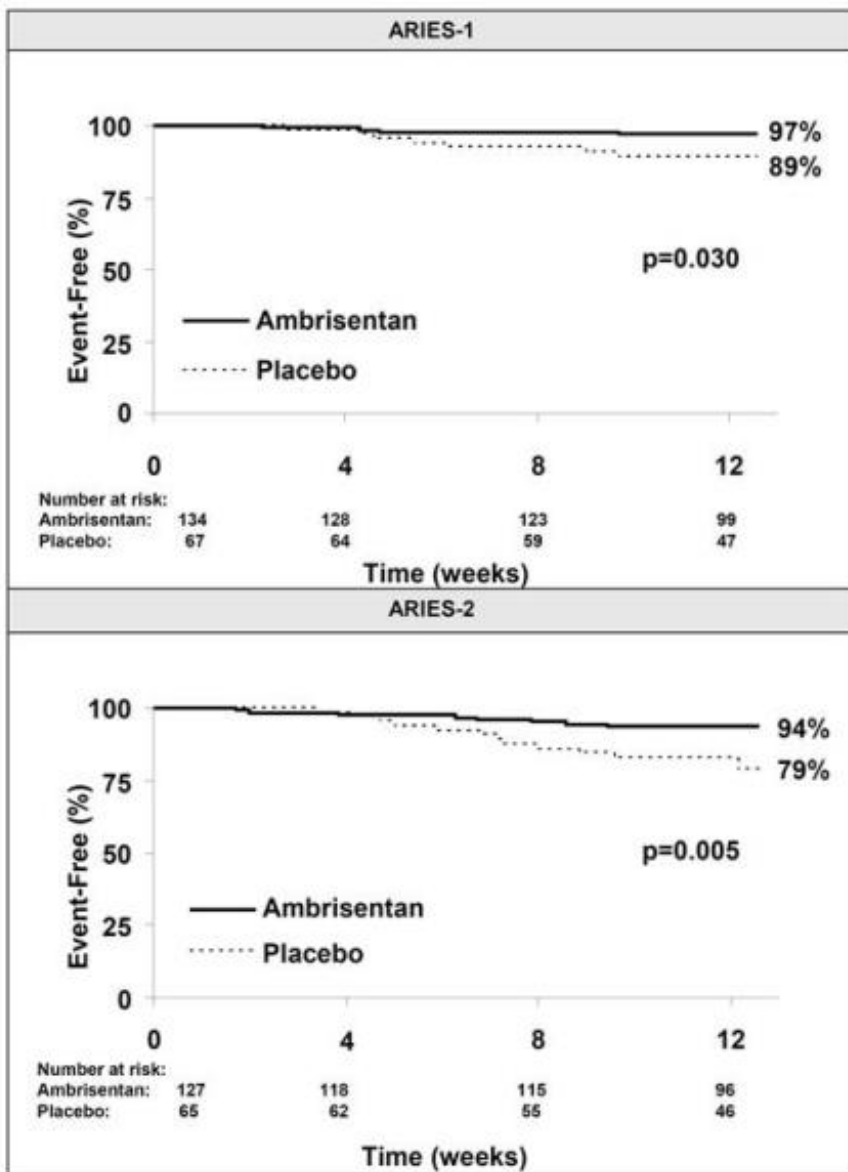
Intention-to-treat population

Note: Patients may have had more than one reason for clinical worsening.

Nominal p-values

There was a significant delay in the time to clinical worsening for patients receiving ambrisentan compared to placebo. Results in subgroups such as the elderly were also favorable.

**Figure 5 Time to Clinical Worsening (ARIES-1 and ARIES-2)**



Time from randomization to clinical worsening with Kaplan-Meier estimates of the proportions of patients without events in ARIES-1 and ARIES-2.

p-values shown are the log-rank comparisons of ambrisentan to placebo stratified by idiopathic or heritable PAH and non-idiopathic, non-heritable PAH patients.

## 14.2. Combination Treatment of PAH

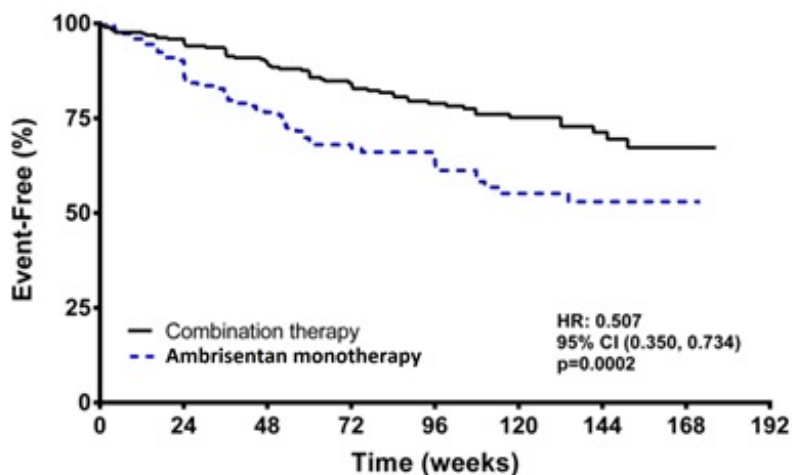
In a randomized, double-blind, active-controlled trial (AMBITION), 605 patients with WHO Functional Class II or III PAH were randomized 2:1:1 to once daily ambrisentan plus tadalafil or to ambrisentan or tadalafil alone. Treatment was initiated with ambrisentan tablets 5 mg and tadalafil 20 mg. If tolerated, tadalafil was increased to 40 mg at 4 weeks and ambrisentan was increased to 10 mg at 8 weeks.

The primary endpoint was time to first occurrence of (a) death, (b) hospitalization for worsening PAH, (c) >15% decrease from baseline in 6MWD combined with WHO Functional Class III or IV symptoms sustained over 14 days (short term clinical worsening), or (d) reduction in 6MWD sustained over 14 days combined with WHO Functional Class III or IV symptoms sustained over 6 months (inadequate long term clinical response).

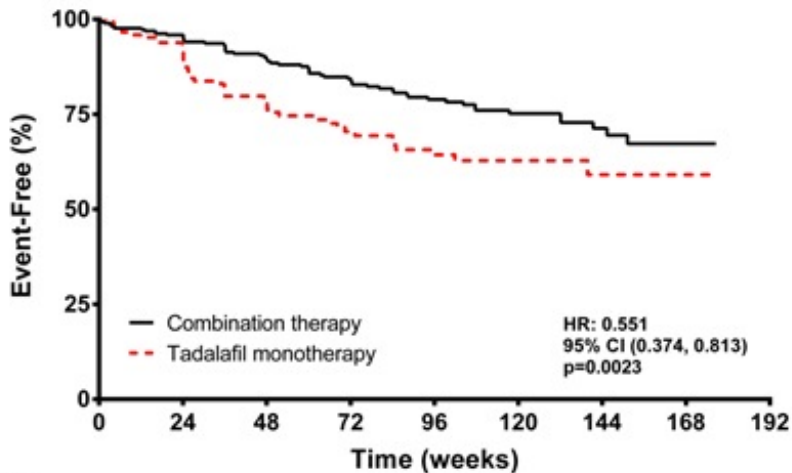
Patients had idiopathic PAH (55%), heritable PAH (3%), or PAH associated with connective tissue diseases, congenital heart disease, stable HIV infection, or drugs or toxins (APAH, 43%). Median time from diagnosis to first study drug administration was 25 days. Approximately 32% and 68% of patients were in WHO Functional Class II and III, respectively. The mean patient age was 55.7 years (34% were  $\geq 65$  years old). Most patients were white (90%) and female (76%); 45% were North American.

Principal results are shown in Figures 6 and 7.

**Figure 6 Time to Primary Endpoint Event (AMBITION)**

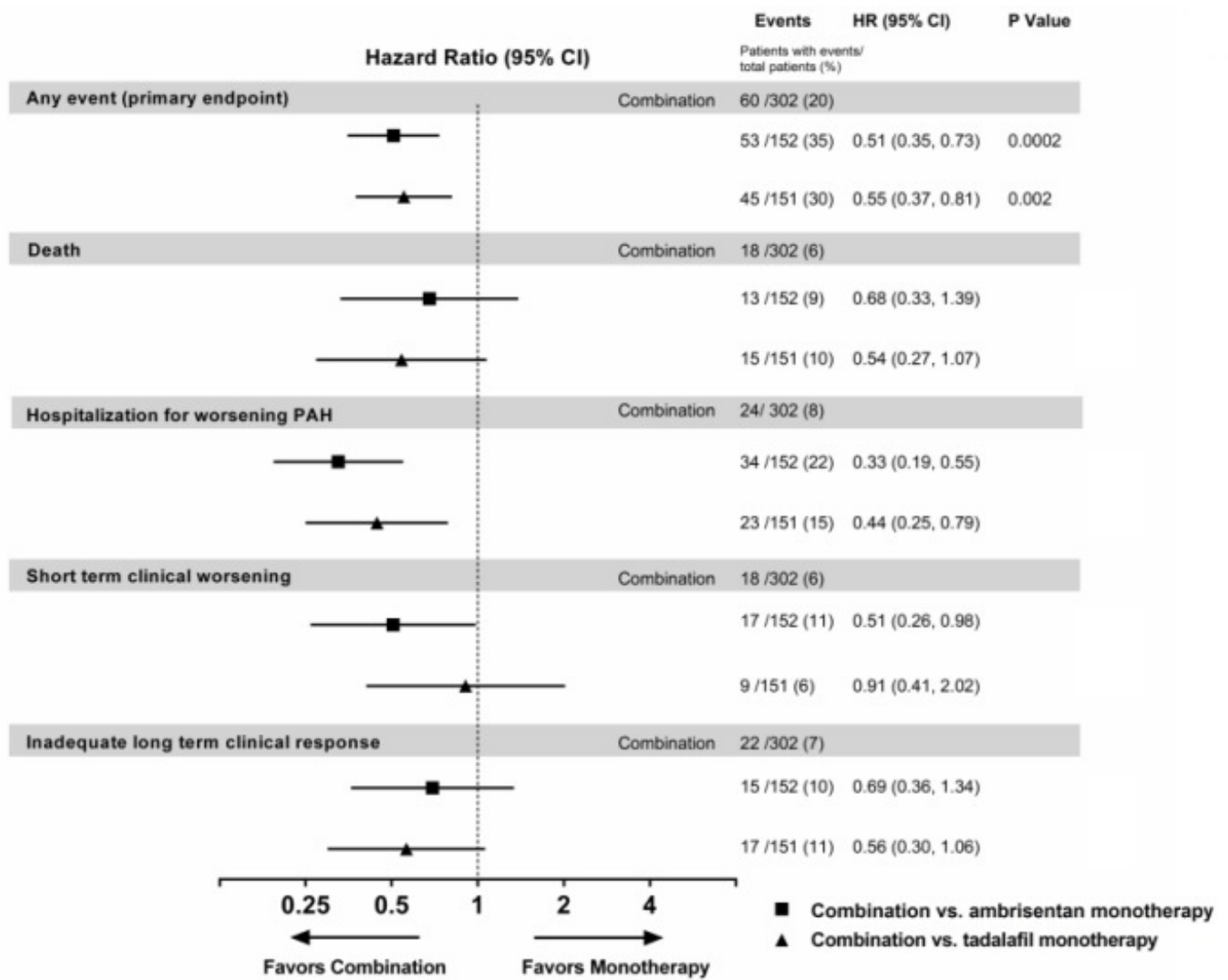


Number at risk:	0	24	48	72	96	120	144	168
Combination:	302	270	217	170	126	85	45	9
Ambrisentan monotherapy:	152	123	96	71	53	30	17	3



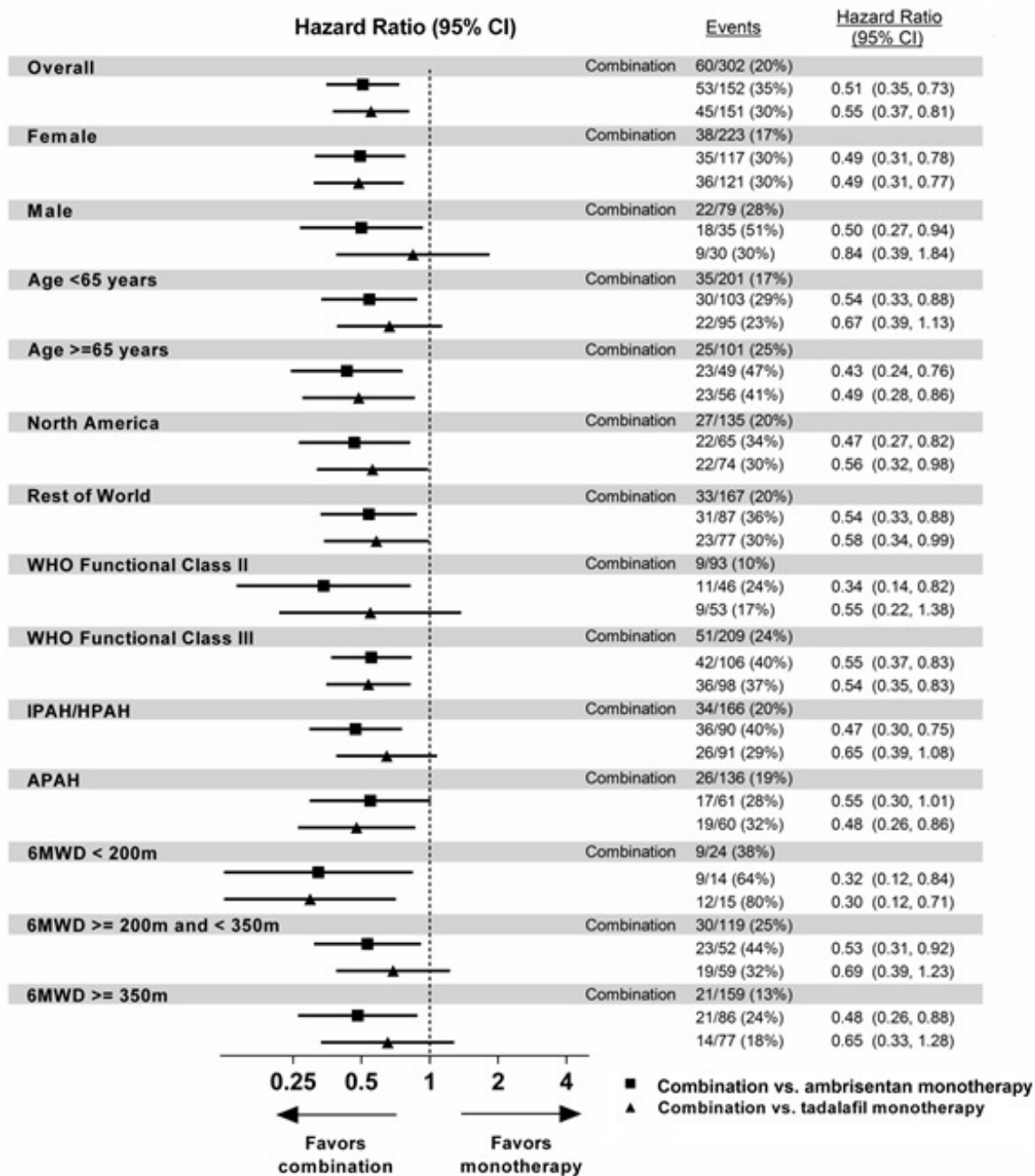
Number at risk:	0	24	48	72	96	120	144	168
Combination:	302	270	217	170	126	85	45	9
Tadalafil monotherapy:	151	128	92	65	48	33	15	3

**Figure 7 Primary Endpoint Events and First Occurrences of Each Component at Any Time (AMBITION)**



The treatment effect of ambrisentan plus tadalafil compared with individual monotherapy on time to first primary endpoint event was consistent across subgroups. (Figure 8).

**Figure 8 Primary Endpoint by Subgroups (AMBITION)**



Note: The figure above presents effects in various subgroups all of which are baseline characteristics and all of which were pre-specified, if not the groupings. The 95% confidence limits that are shown do not take into account how many comparisons were made, nor do they reflect the effect of a particular factor after adjustment for all other factors. Apparent homogeneity or heterogeneity among groups should not be over interpreted.

### Exercise Ability

Results of the 6MWD at 24 weeks for the AMBITION study are shown in Table 5 and Figure 9.

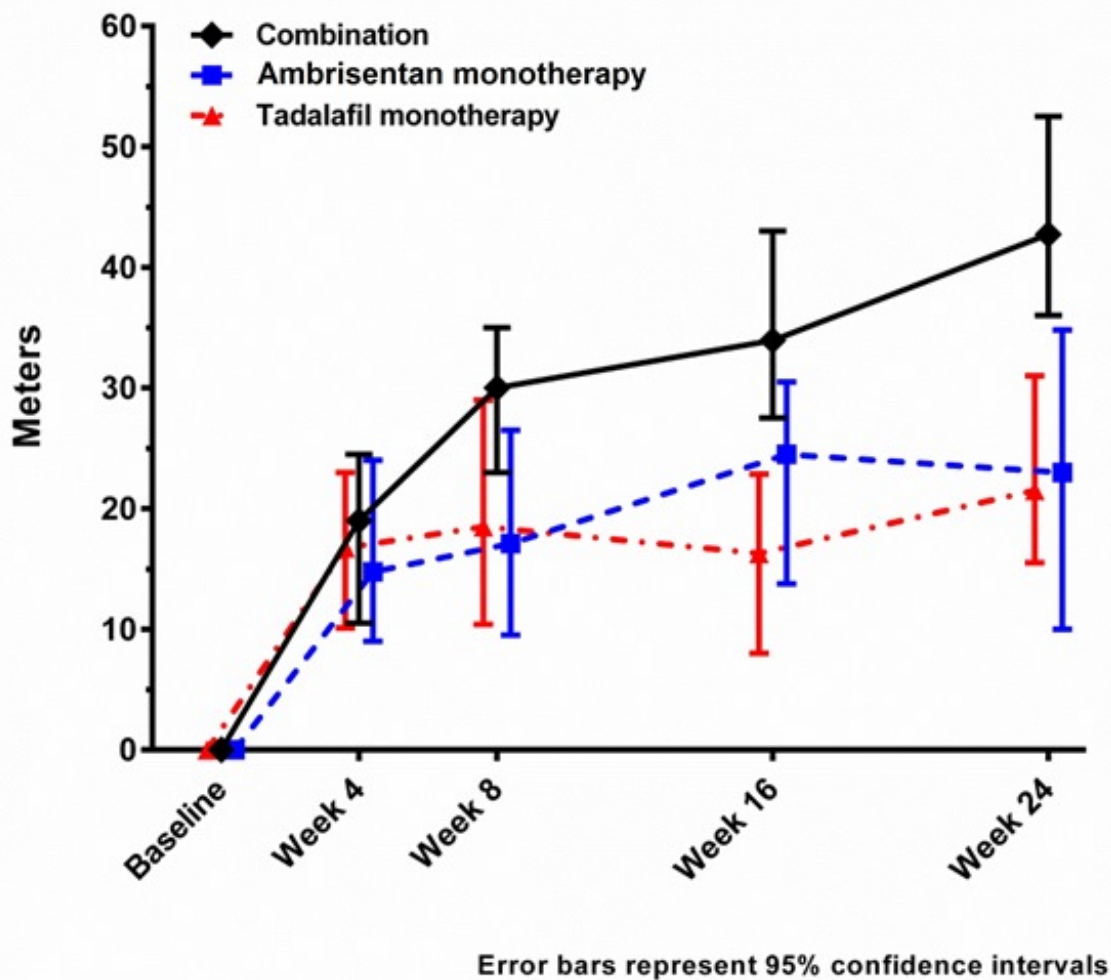
**Table 5 6-Minute Walk Distance at Week 24 (meters) <sup>a</sup> (AMBITION)**



	<b>Ambrisentan + Tadalafil (N=302)</b>	<b>Ambrisentan Monotherapy (N=152)</b>	<b>Tadalafil Monotherapy (N=151)</b>
Baseline (median)	356	366	352
Change from baseline (median)	43	23	22
Median difference from Ambrisentan + Tadalafil (95% CI)		24 (11, 37)	20 (8, 32)
P-Value		0.0004	0.0016

<sup>a</sup> Missing values at Week 24 were imputed using Worst Rank scores for patients with an adjudicated clinical failure event of death or hospitalization, and Last Observed Carried Forward otherwise.

**Figure 9 Median Change in 6-Minute Walk Distance (meters) in AMBITION**



### 14.3. Long-term Treatment of PAH

In long-term follow-up of patients who were treated with ambrisentan (2.5 mg, 5 mg, or

10 mg once daily) in the two pivotal studies and their open-label extension (N=383), Kaplan-Meier estimates of survival at 1, 2, and 3 years were 93%, 85%, and 79%, respectively. Of the patients who remained on ambrisentan for up to 3 years, the majority received no other treatment for PAH. These uncontrolled observations do not allow comparison with a group not given ambrisentan and cannot be used to determine the long-term effect of ambrisentan on mortality.

#### 14.4. Adverse Effects in Idiopathic Pulmonary Fibrosis (IPF)

A randomized controlled study in patients with IPF, with or without pulmonary hypertension (WHO Group 3), compared ambrisentan (N = 329) to placebo (N = 163). The study was terminated after 34 weeks for lack of efficacy, and was found to demonstrate a greater risk of disease progression or death on ambrisentan. More patients taking ambrisentan died (8% vs. 4%), had a respiratory hospitalization (13% vs. 6%), and had a decrease in FVC/DLCO (17% vs. 12%) [see *Contraindications (4.2)*].

## 16 HOW SUPPLIED/STORAGE AND HANDLING

Ambrisentan film-coated tablets are supplied as follows:

Tablet Strength	Package Configuration	NDC No.	Description of Tablet; Debossed on Tablet; Size
5 mg	30 count bottle	42794-051-08	Square shaped; light pink; “Σ” on one side and “51” on the other side; 6.6 mm Square
	10 count bottle	42794-051-22	
10 mg	30 count bottle	42794-052-08	Oval shaped; dark pink; “Σ” on one side and “52” on the other side; 9.8 mm x 4.9 mm Oval
	10 count bottle	42794-052-22	

Store at 25° C (77° F); excursions permitted to 15–30° C (59–86° F) [see *USP controlled room temperature*]. Store ambrisentan tablets in its original packaging.

## 17 PATIENT COUNSELING INFORMATION

Advise patients to read the FDA-approved patient labeling (Medication Guide).

### Embryo-fetal Toxicity

Instruct patients on the risk of fetal harm when ambrisentan is used in pregnancy [see *Warnings and Precautions (5.1) and Use in Specific Populations (8.1)*]. Female patients must enroll in the Ambrisentan REMS Program. Instruct females of reproductive potential to immediately contact their physician if they suspect they may be pregnant.

### Ambrisentan REMS Program

For female patients, ambrisentan is only available through a restricted program called the Ambrisentan REMS [see *Contraindications (4.1), Warnings and Precautions (5.2)*].

Male patients are not enrolled in the Ambrisentan REMS.

Inform female patients (and their guardians, if applicable) of the following notable requirements:

- All female patients must sign an enrollment form.
- Advise female patients of reproductive potential that they must comply with the pregnancy testing and contraception requirements [see *Use in Specific Populations (8.3)*].
- Educate and counsel females of reproductive potential on the use of emergency contraception in the event of unprotected sex or known or suspected contraceptive failure.
- Advise pre-pubertal females to report any changes in their reproductive status immediately to their prescriber.

Review the Ambrisentan Medication Guide and REMS educational material with female patients.

A limited number of pharmacies are certified to dispense ambrisentan tablets. Therefore, provide patients with the telephone number and website for information on how to obtain the product.

### **Hepatic Effects**

Advise patients of the symptoms of potential liver injury and instruct them to report any of these symptoms to their physician.

### **Hematological Change**

Advise patients of the importance of hemoglobin testing.

### **Other Risks Associated with Ambrisentan**

Instruct patients that the risks associated with ambrisentan also include the following:

- Decreases in sperm count
- Fluid overload

### **Administration**

Advise patients not to split, crush, or chew tablets.

Sigmapharm Laboratories, LLC, Bensalem, PA 19020

Other brands noted herein are the property of their respective owners.

OS052-05 REV.1218

### **Medication Guide**

#### **Ambrisentan**

**(am' bri sen' tan)**

#### **Tablets**

Read this Medication Guide before you start taking ambrisentan tablets and each time you get a refill. There may be new information. This Medication Guide does not take the place of talking with your doctor about your medical condition or your treatment.

## What is the most important information I should know about ambrisentan tablets?

- **Serious birth defects.**

**Ambrisentan tablets can cause serious birth defects if taken during pregnancy.**

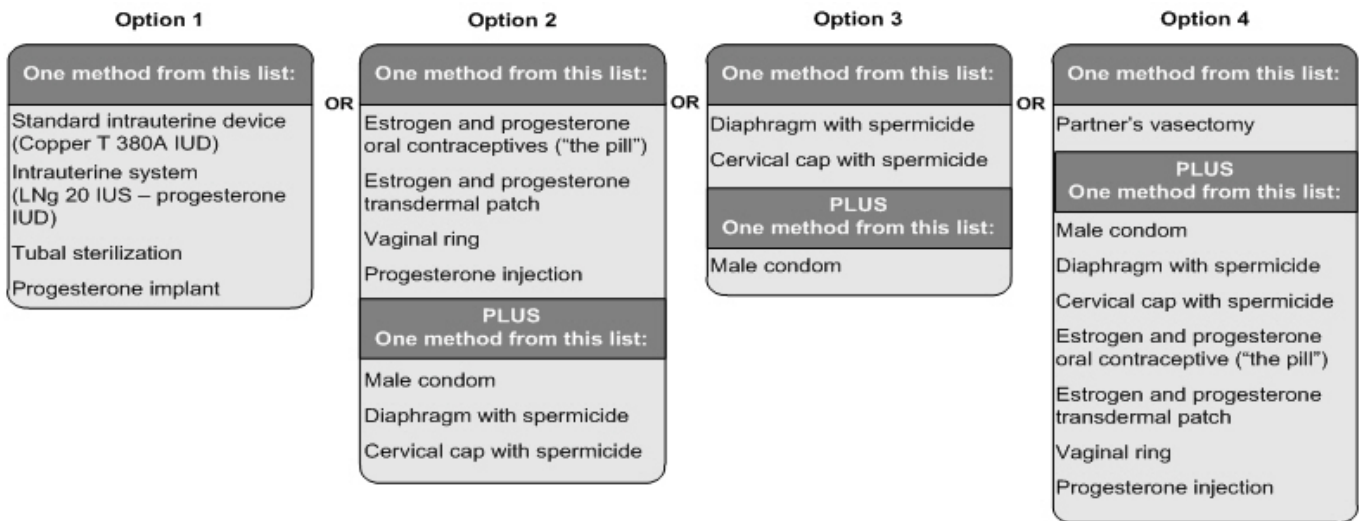
- **Females must not be pregnant when they start taking ambrisentan tablets or become pregnant during treatment with ambrisentan tablets.**
- Females who are able to get pregnant must have a negative pregnancy test before beginning treatment with ambrisentan tablets, each month during treatment with ambrisentan tablets, and one month after stopping ambrisentan tablets. Talk to your doctor about your menstrual cycle. Your doctor will decide when to do a pregnancy test, and will order a pregnancy test for you depending on your menstrual cycle.
  - Females who **are able** to get pregnant are females who:
    - have entered puberty, even if they have not started their menstrual period, **and**
    - have a uterus, **and**
    - have not gone through menopause. Menopause means that you have not had a menstrual period for at least 12 months for natural reasons, or that you have had your ovaries removed.
  - Females who **are not able** to get pregnant are females who:
    - have not yet entered puberty, **or**
    - do not have a uterus, **or**
    - have gone through menopause. Menopause means that you have not had a menstrual period for at least 12 months for natural reasons, or that you have had your ovaries removed, **or**
    - who are infertile for any other medical reason and this infertility is permanent and cannot be reversed.

**Females who are able to get pregnant must use two acceptable forms of birth control during treatment with ambrisentan tablets, and for one month after stopping ambrisentan tablets because the medicine may still be in the body.**

- If you have had a tubal sterilization or have an IUD (intrauterine device) or progesterone implant, these methods can be used alone and no other form of birth control is needed.
- Talk with your doctor or gynecologist (a doctor who specializes in female reproduction) to find out about options for acceptable forms of birth control that you may use to prevent pregnancy during treatment with ambrisentan tablets.
- If you decide that you want to change the form of birth control that you use, talk with your doctor or gynecologist to be sure that you choose another acceptable form of birth control.

**See the chart below for Acceptable Birth Control Options during treatment with ambrisentan tablets.**

**Acceptable Birth Control Options**



- **Do not have unprotected sex. Talk to your doctor or pharmacist right away if you have unprotected sex or if you think your birth control has failed. Your doctor may tell you to use emergency birth control.**
- **Tell your doctor right away if you miss a menstrual period or think you may be pregnant for any reason.**

If you are the parent or caregiver of a female child who started taking ambrisentan tablets before reaching puberty, you should check your child regularly to see if she is developing signs of puberty. Tell your doctor right away if you notice that she is developing breast buds or pubic hair. Your doctor should decide if your child has reached puberty. **Your child may reach puberty before having her first menstrual period.**

Females can only receive ambrisentan tablets through a restricted program called the Ambrisentan Risk Evaluation and Mitigation Strategy (REMS) program. If you are a female who can get pregnant, you must talk to your doctor, understand the benefits and risks of ambrisentan tablets, and agree to all of the instructions in the Ambrisentan REMS program.

Males can receive ambrisentan tablets without taking part in the Ambrisentan REMS program.

### **What are ambrisentan tablets?**

- Ambrisentan tablets are a prescription medicine used to treat pulmonary arterial hypertension (PAH), which is high blood pressure in the arteries of your lungs.
- Ambrisentan tablets can improve your ability to exercise and it can help slow down the worsening of your physical condition and symptoms.
- When taken with tadalafil, ambrisentan tablets are used to reduce the risk of your disease progressing, to reduce the risk of hospitalization due to worsening pulmonary arterial hypertension (PAH), and to improve your ability to exercise.
- It is not known if ambrisentan tablets are safe and effective in children.

### **Who should not take ambrisentan tablets?**

#### **Do not take ambrisentan tablets if:**

- **you are pregnant, plan to become pregnant, or become pregnant during treatment with ambrisentan tablets. Ambrisentan tablets can cause serious birth defects.** (See "What is the most important information I

**should know about ambrisentan tablets?")** Serious birth defects from ambrisentan tablets happen early in pregnancy.

- you have a condition called Idiopathic Pulmonary Fibrosis (IPF)

### **What should I tell my doctor before taking ambrisentan tablets?**

#### **Before you take ambrisentan tablets, tell your doctor if you:**

- have been told that you have a low red blood cell level (anemia)
- have liver problems
- have any other medical conditions

**Tell your doctor about all the medicines you take, including prescription and over-the-counter medicines, vitamins, and herbal supplements.** Ambrisentan tablets and other medicines may affect each other, causing side effects. Do not start any new medicines until you check with your doctor.

**Especially tell your doctor if you take the medicine cyclosporine (Gengraf, Neoral, Sandimmune).** Your doctor may need to change your dose of ambrisentan tablets.

### **How should I take ambrisentan tablets?**

- Ambrisentan tablets will be mailed to you by a certified pharmacy. Your doctor will give you complete details.
- Take ambrisentan tablets exactly as your doctor tells you to take it. Do not stop taking ambrisentan tablets unless your doctor tells you to stop.
- You can take ambrisentan tablets with or without food.
- Do not split, crush or chew ambrisentan tablets.
- It will be easier to remember to take ambrisentan tablets if you take it at the same time each day.
- If you take more than your regular dose of ambrisentan tablets, call your doctor right away.
- If you miss a dose, take it as soon as you remember that day. Take your next dose at the regular time. Do not take two doses at the same time to make up for a missed dose.

### **What should I avoid while taking ambrisentan tablets?**

- **Do not get pregnant** while taking ambrisentan tablets. (See the serious birth defects section of the Medication Guide above called "**What is the most important information I should know about ambrisentan tablets?**") If you miss a menstrual period, or think you might be pregnant, call your doctor right away.
- **It is not known if ambrisentan tablets passes into your breast milk. You should not breastfeed** if you are taking ambrisentan tablets. Talk to your doctor about the best way to feed your baby if you take ambrisentan tablets.

### **What are the possible side effects of ambrisentan tablets?**

#### **Ambrisentan tablets can cause serious side effects including:**

- See "**What is the most important information I should know about ambrisentan tablets?**"
- **Swelling all over the body** (fluid retention) can happen within weeks after starting ambrisentan tablets. Tell your doctor right away if you have any unusual weight gain, tiredness, or trouble breathing while taking ambrisentan tablets. These may be

symptoms of a serious health problem. You may need to be treated with medicine or need to go to the hospital.

- **Decreased sperm count.** Decreased sperm counts have happened in some men taking a medicine that is like ambrisentan tablets. A decreased sperm count may affect the ability to father a child. Tell your doctor if being able to have children is important to you.
- **Low red blood cell levels** (anemia) can happen during the first weeks after starting ambrisentan tablets. If this happens, you may need a blood transfusion. Your doctor will do blood tests to check your red blood cells before starting ambrisentan tablets. Your doctor may also do these tests during treatment with ambrisentan tablets.

### **The most common side effects of ambrisentan tablets include:**

- 
- swelling of hands, legs, ankles and feet (peripheral edema)
  - stuffy nose (nasal congestion)
  - inflamed nasal passages (sinusitis)
  - hot flashes or getting red in the face (flushing)
- 

### **Some medicines that are like ambrisentan tablets can cause liver problems. Tell your doctor if you get any of these symptoms of a liver problem while taking ambrisentan tablets:**

- 
- loss of appetite
  - nausea or vomiting
  - fever
  - achiness
  - generally do not feel well
  - pain in the upper right stomach (abdominal) area
  - yellowing of your skin or the whites of your eyes
  - dark urine
  - itching
- 

Tell your doctor if you have any side effect that bothers you or that does not go away. These are not all of the possible side effects of ambrisentan tablets. For more information, ask your doctor or pharmacist.

Call your doctor for medical advice about side effects. You may report side effects to Sigmapharm Laboratories, LLC, Pharmacovigilance at 1-855-332-0731 or FDA at 1-800-FDA-1088 or [www.fda.gov/medwatch](http://www.fda.gov/medwatch).

### **How should I store ambrisentan tablets?**

Store ambrisentan tablets at room temperature between 68 °F to 77 °F (20 °C to 25 °C), in the package it comes in.

**Keep ambrisentan tablets and all medicines out of the reach of children.**

### **General information about the safe and effective use ambrisentan tablets**

Medicines are sometimes prescribed for purposes other than those listed in a Medication

Guide. Do not use ambrisentan tablets for a condition for which it was not prescribed. Do not give ambrisentan tablets to other people, even if they have the same symptoms that you have. It may harm them.

This Medication Guide summarizes the most important information about ambrisentan tablets. If you would like more information, ask your doctor. You can ask your doctor or pharmacist for information about ambrisentan tablets that is written for health professionals.

### **What are the ingredients in ambrisentan tablets?**

**Active ingredient:** ambrisentan.

**Inactive Ingredients:** croscarmellose sodium, lactose monohydrate, magnesium stearate and microcrystalline cellulose. The 5 mg and 10 mg tablets are film-coated with a coating material containing FD&C Red #40 aluminum lake, polyethylene glycol, polyvinyl alcohol, talc, and titanium dioxide. Ambrisentan Tablets, 5 mg also contain FD&C Blue #2.

Sigmapharm Laboratories, LLC, Bensalem, PA 19020

Other brands noted herein are the property of their respective owners.

OS052-05 MG REV.1218

For more information call 1-888-417-3172 or go to [www.ambrisentanrems.us.com](http://www.ambrisentanrems.us.com) or [www.sigmapharm.com](http://www.sigmapharm.com).

This Medication Guide has been approved by the U.S. Food and Drug Administration.

Revised December 2018

### **PRINCIPAL DISPLAY PANEL - 5 mg Tablet Container Label**

NDC 42794-051-08

#### **Ambrisentan Tablets, 5 mg**

#### **R<sub>x</sub> only**

Each tablet contains 5 mg of ambrisentan.

#### **30 tablets**

DISPENSER: Dispense the attached Medication Guide to each patient.

**Sigmapharm Laboratories, LLC**




NDC 42794-051-08

# Ambrisentan Tablets

**5 mg**


DISPENSER: Dispense the attached Medication Guide to each patient.



Rx only  
**30 Tablets**

**Ambrisentan Tablets**  
Each tablet contains 5 mg of ambrisentan.  
**Do not split, crush, or chew your tablets.**  
Store at 25°C (77°F); excursions permitted to 15-30°C (59-86°F) [see USP Controlled Room Temperature].  
Keep container tightly closed. Dispense only in original container.  
**Usual Dosage:** See package insert for dosage and administration.

Sigmapharm Laboratories, LLC  
Bensalem, PA 19020



N 3 42794-051-08 1  
L068.03-R0918

## PRINCIPAL DISPLAY PANEL - 10 mg Tablet Container Label

NDC 42794-052-08

### Ambrisentan Tablets, 10 mg

**R<sub>x</sub> only**

Each tablet contains 10 mg of ambrisentan.

**30 tablets**

DISPENSER: Dispense the attached Medication Guide to each patient.


**Sigmapharm Laboratories, LLC**

NDC 42794-052-08

# Ambrisentan Tablets

**10 mg**


DISPENSER: Dispense the attached Medication Guide to each patient.



Rx only  
**30 Tablets**

**Ambrisentan Tablets**  
Each tablet contains 10 mg of ambrisentan.  
**Do not split, crush, or chew your tablets.**  
Store at 25°C (77°F); excursions permitted to 15-30°C (59-86°F) [see USP Controlled Room Temperature].  
Keep container tightly closed. Dispense only in original container.  
**Usual Dosage:** See package insert for dosage and administration.

Sigmapharm Laboratories, LLC  
Bensalem, PA 19020



N 3 42794-052-08 8  
L070.03-R0918

## AMBRISENTAN

ambrisentan tablet, film coated

### Product Information

<b>Product Type</b>	HUMAN PRESCRIPTION DRUG	<b>Item Code (Source)</b>	NDC:42794-051
<b>Route of Administration</b>	ORAL		

**Active Ingredient/Active Moiety**

<b>Ingredient Name</b>	<b>Basis of Strength</b>	<b>Strength</b>
AMBRISENTAN (UNII: HW6NV07QEC) (AMBRISENTAN - UNII:HW6NV07QEC)	AMBRISENTAN	5 mg

**Inactive Ingredients**

<b>Ingredient Name</b>	<b>Strength</b>
CROSCARMELOSE SODIUM (UNII: M28OL1HH48)	
LACTOSE MONOHYDRATE (UNII: EWQ57Q8I5X)	
MAGNESIUM STEARATE (UNII: 70097M6I30)	
CELLULOSE, MICROCRYSTALLINE (UNII: OP1R32D61U)	
FD&C RED NO. 40 (UNII: WZB9127XOA)	
ALUMINUM OXIDE (UNII: LMI26O6933)	
POLYETHYLENE GLYCOL 3350 (UNII: G2M7P15E5P)	
POLYVINYL ALCOHOL (UNII: 532B59J990)	
TALC (UNII: 7SEV7J4R1U)	
TITANIUM DIOXIDE (UNII: 15FIX9V2JP)	
FD&C BLUE NO. 2 (UNII: L06K8R7DQK)	

**Product Characteristics**

<b>Color</b>	pink (light pink)	<b>Score</b>	no score
<b>Shape</b>	SQUARE	<b>Size</b>	7mm
<b>Flavor</b>		<b>Imprint Code</b>	51
<b>Contains</b>			

**Packaging**

<b>#</b>	<b>Item Code</b>	<b>Package Description</b>	<b>Marketing Start Date</b>	<b>Marketing End Date</b>
1	NDC:42794-051-08	30 in 1 BOTTLE, PLASTIC; Type 0: Not a Combination Product	04/10/2019	
2	NDC:42794-051-22	10 in 1 BOTTLE, PLASTIC; Type 0: Not a Combination Product	04/10/2019	

**Marketing Information**

<b>Marketing Category</b>	<b>Application Number or Monograph Citation</b>	<b>Marketing Start Date</b>	<b>Marketing End Date</b>
ANDA	ANDA208354	04/10/2019	

**AMBRISENTAN**

ambrisentan tablet, film coated

**Product Information**

<b>Product Type</b>	HUMAN PRESCRIPTION DRUG	<b>Item Code (Source)</b>	NDC:42794-052
<b>Route of Administration</b>	ORAL		

**Active Ingredient/Active Moiety**

Ingredient Name	Basis of Strength	Strength
AMBRISENTAN (UNII: HW6NV07QEC) (AMBRISENTAN - UNII:HW6NV07QEC)	AMBRISENTAN	10 mg

**Inactive Ingredients**

Ingredient Name	Strength
CROSCARMELOSE SODIUM (UNII: M28OL1HH48)	
LACTOSE MONOHYDRATE (UNII: EWQ57Q8I5X)	
MAGNESIUM STEARATE (UNII: 70097M6I30)	
CELLULOSE, MICROCRYSTALLINE (UNII: OP1R32D61U)	
FD&C RED NO. 40 (UNII: WZB9127XOA)	
ALUMINUM OXIDE (UNII: LMI26O6933)	
POLYETHYLENE GLYCOL 3350 (UNII: G2M7P15E5P)	
POLYVINYL ALCOHOL (UNII: 532B59J990)	
TALC (UNII: 7SEV7J4R1U)	
TITANIUM DIOXIDE (UNII: 15FIX9V2JP)	

**Product Characteristics**

Color	pink (dark pink)	Score	no score
Shape	OVAL	Size	10mm
Flavor		Imprint Code	52
Contains			

**Packaging**

#	Item Code	Package Description	Marketing Start Date	Marketing End Date
1	NDC:42794-052-08	30 in 1 BOTTLE, PLASTIC; Type 0: Not a Combination Product	04/10/2019	
2	NDC:42794-052-22	10 in 1 BOTTLE, PLASTIC; Type 0: Not a Combination Product	04/10/2019	

**Marketing Information**

Marketing Category	Application Number or Monograph Citation	Marketing Start Date	Marketing End Date
ANDA	ANDA208354	04/10/2019	

**Labeler** - Sigmapharm Laboratories, LLC (556234636)**Establishment**

Name	Address	ID/FEI	Business Operations
Sigmapharm Laboratories,		556234636	manufacture(42794-051, 42794-052) , analysis(42794-051,

LLC

550234050 42794-052)

Revised: 1/2023

Sigmapharm Laboratories, LLC