

**ERBORIAN BB CREME AU GINSENG CHOCOLATE SPF 20- octisalate, titanium dioxide, zinc oxide cream**  
**LABORATOIRES M&L**

-----  
**Erborian BB creme au Ginseng chocolate SPF 20**

***Drug Facts***

***Active ingredients***

Octisalate 4%

Titanium dioxide 3.54%

Zinc oxide 2.94%

***Purpose***

Sunscreen

***Uses***

- Helps prevent sunburn
- If used as directed with other sun protection measures (see ), decreases the risk of skin cancer and early skin aging caused by the sun ***Directions***

***Warnings***

**For external use only**

**Do not use**

- on damaged or broken skin

**When using this product**

keep out of eyes. Rinse with water to remove

**Stop use and ask a doctor if**

- rash occurs.

**Keep out of reach of children.**

If swallowed, get medical help or contact a Poison Control Center right away

***Directions***

For sunscreen use:

- Apply liberally 15 minutes before sun exposure
- Reapply at least every 2 hours

- Use a water resistant sunscreen if swimming or sweating
- Spending time in the sun increases your risk of skin cancer and early skin aging. To decrease this risk, regularly use a sunscreen with a Broad Spectrum SPF value of 15 or higher and other sun protection measures including: **Sun Protection Measures.**
- Limit time in the sun, especially from 10 a.m. -2 p.m.
- Wear long-sleeved shirts, pants, hats and sunglasses
- Children under 6 months of age: ask a doctor

### **Other information**

- Protect the product in this container from excessive heat and direct sun

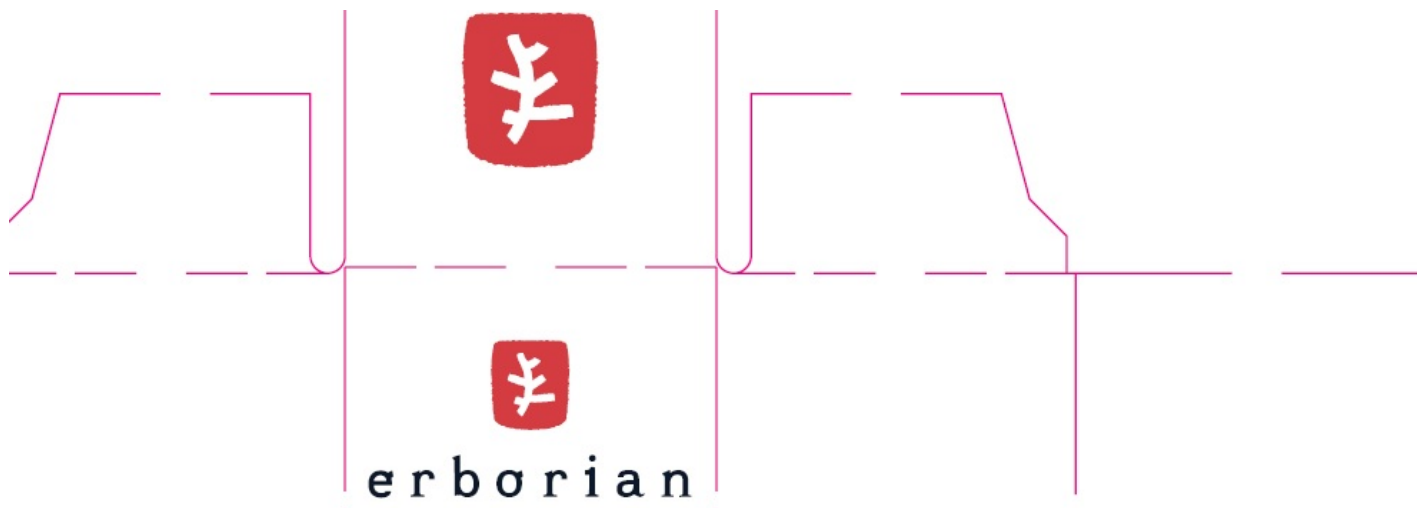
### **Inactive ingredients**

AQUA/WATER - DIMETHICONE - CI 77492/IRON OXIDES - CAPRYLIC/CAPRIC TRIGLYCERIDE - GLYCERIN - BUTYLOCTYL SALICYLATE - CI 77491/IRON OXIDES - HEXYL LAURATE - DISILOXANE - CI 77499/IRON OXIDES - PEG-10 DIMETHICONE - DISTEARDIMONIUM HECTORITE - BETAINE - BUTYLENE GLYCOL - PENTYLENE GLYCOL - MAGNESIUM SULFATE - CI 77891/TITANIUM DIOXIDE - PANAX GINSENG ROOT EXTRACT - GLYCYRRHIZA GLABRA (LICORICE) ROOT EXTRACT - KIGELIA AFRICANA FRUIT EXTRACT - DIOSCOREA VILLOSA (WILD YAM) ROOT EXTRACT - EQUISETUM GIGANTEUM EXTRACT - CETYL PEG/PPG-10/1 DIMETHICONE - DIMETHICONE/VINYL DIMETHICONE CROSSPOLYMER - TRIETHOXYCAPRYLYLSILANE - SYNTHETIC FLUORPHLOGOPITE - STEARIC ACID - ALUMINA - GLYCERYL CAPRYLATE - PALMITIC ACID - CAPRYLYL GLYCOL - ALUMINUM HYDROXIDE - PENTAERYTHRITYL TETRA-DI-T-BUTYL HYDROXYHYDROCINNAMATE - TIN OXIDE - ALCOHOL - ETHYLHEXYLGLYCERIN - PARFUM/FRAGRANCE - HEXYL CINNAMAL - ALPHA-ISOMETHYL IONONE - LINALOOL - CITRONELLOL - GERANIOL

### **Questions or comments?**

Call toll free 1-888-975-2162

### **Package Labeling:**



**Drug Facts** (continued)

**Inactive ingredients**

AQUA/WATER - DIMETHICONE - CI 77492/IRON OXIDES - CAPRYLIC/CAPRIC TRIGLYCERIDE - GLYCERIN - BUTYLOCTYL SALICYLATE - CI 77491/IRON OXIDES - HEXYL LAURATE - DISILOXANE - CI 77499/IRON OXIDES - PEG-10 DIMETHICONE - DISTEARDIMONIUM HECTORITE - BETAINE - BUTYLENE GLYCOL - PENTYLENE GLYCOL - MAGNESIUM SULFATE - CI 77891/TITANIUM DIOXIDE - PANAX GINSENG ROOT EXTRACT - GLYCYRRHIZA GLABRA (LICORICE) ROOT EXTRACT - KIGELIA AFRICANA FRUIT EXTRACT - DIOSCOREA VILLOSA (MILD YAM) ROOT EXTRACT - EQUISETUM GIGANTEUM EXTRACT - CETYL PEG/PPG-10/1 DIMETHICONE - DIMETHICONE/MINYL DIMETHICONE CROSSPOLYMER - TRIETHOXYCAPRYLYLSILANE - SYNTHETIC FLUORPHLOGOPITE - STEARIC ACID - ALUMINA - GLYCERYL CAPRYLATE - PALMITIC ACID - CAPRYLYL GLYCOL - ALUMINUM HYDROXIDE - PENTAERYTHRITYL TETRA-DI-T-BUTYL HYDROXYHYDROCINNAMATE - TIN OXIDE - ALCOHOL - ETHYLHEXYLGLYCERIN - PARFUM/FRAGRANCE - HEXYL CINNAMAL - ALPHA-ISOMETHYL IONONE - LINALOOL - CITRONELLOL - GERANIOL

**Questions or comments?**

Call toll free  
1-888-975-2162

**BB CRÈME  
AU GINSENG  
KOREAN FORMULA**

**"BABY SKIN" EFFECT  
MAKEUP-CARE  
FACE CREAM**

5-IN-1

BROAD SPECTRUM  
SPF 20 SUNSCREEN

CHOCOLATE



45 ML  
NET WT. 1.8 OZ.

The 5-in-1 BB CRÈME AU GINSENG is a Korean formula for visibly perfect skin.

This multi-purpose, skin care complexion-enhancer draws on the expertise of Korean technology. Enriched with Ginseng – with multiple beneficial properties renowned in Korea – the formula adapts to your natural skin tone and helps to:

1. Even out and mattify the complexion,
  2. Reduce the appearance of blemishes,
  3. Refine skin's texture,
  4. Moisturize and "plump" the skin,
  5. Give a non-oily, velvety finish.
- Your skin feels softer, is visibly smoother and more beautiful, just like "baby skin".

[Apply onto face and smooth over the skin, working outwards from the center. Can be used either after or in place of your everyday skincare product according to your skin's needs.]  
Tested under dermatological supervision. **Non-comedogenic.**

www.erborian.com  
Made in South Korea  
M&L - 108 rue de Richelieu  
Paris - France

**Drug Facts**

**Active ingredients Purpose**

Octisalate 4%.....Sunscreen  
Titanium dioxide 3.54% Sunscreen  
Zinc oxide 2.94%.....Sunscreen

**Uses**

- Helps prevent sunburn
- If used as directed with other sun protection measures (see **Directions**), decreases the risk of skin cancer and early skin aging caused by the sun

**Warnings**

**For external use only**

**Do not use** ■ on damaged or broken skin

**When using this product** ■ keep out of eyes. Rinse with water to remove

**Stop use and ask a doctor if**

■ rash occurs.

**Keep out of reach of children.** If swallowed, get medical help or contact a Poison Control Center right away

**Directions**

For sunscreen use:

- Apply liberally 15 minutes before sun exposure
- Reapply at least every 2 hours
- Use a water resistant sunscreen if swimming or sweating
- **Sun Protection Measures.** Spending time in the sun increases your risk of skin cancer and early skin aging. To decrease this risk, regularly use a sunscreen with a Broad Spectrum SPF value of 15 or higher and other sun protection measures including:
  - Limit time in the sun, especially from 10 a.m. -2 p.m.
  - Wear long-sleeved shirts, pants, hats and sunglasses
  - Children under 6 months of age: ask a doctor

**Other information**

- Protect the product in this container from excessive heat and direct sun



# ERBORIAN BB CREME AU GINSENG CHOCOLATE SPF 20

octisalate, titanium dioxide, zinc oxide cream

## Product Information

|                                |                |                           |               |
|--------------------------------|----------------|---------------------------|---------------|
| <b>Product Type</b>            | HUMAN OTC DRUG | <b>Item Code (Source)</b> | NDC:10345-904 |
| <b>Route of Administration</b> | TOPICAL        |                           |               |

## Active Ingredient/Active Moiety

| Ingredient Name   | Basis of Strength | Strength        |
|---|-------------------|-----------------|
| <b>OCTISALATE</b> (UNII: 4X49Y0596W) (OCTISALATE - UNII:4X49Y0596W)             | OCTISALATE        | 40 mg in 1 mL   |
| <b>TITANIUM DIOXIDE</b> (UNII: 15FIX9V2JP) (TITANIUM DIOXIDE - UNII:15FIX9V2JP) | TITANIUM DIOXIDE  | 35.4 mg in 1 mL |
| <b>ZINC OXIDE</b> (UNII: SOI2LOH54Z) (ZINC CATION - UNII:13S1S8SF37)            | ZINC CATION       | 29.4 mg in 1 mL |

## Inactive Ingredients

| Ingredient Name   | Strength |
|---|----------|
| <b>WATER</b> (UNII: 059QF0KO0R)   |          |
| <b>DIMETHICONE</b> (UNII: 92RU3N3Y1O)   |          |
| <b>FERRIC OXIDE YELLOW</b> (UNII: EX438O2MRT)   |          |
| <b>MEDIUM-CHAIN TRIGLYCERIDES</b> (UNII: C9H2L21V7U)  |          |
| <b>GLYCERIN</b> (UNII: PDC6A3C0OX)  |          |
| <b>BUTYLOCTYL SALICYLATE</b> (UNII: 2EH13UN8D3)   |          |
| <b>FERRIC OXIDE RED</b> (UNII: 1K09F3G675)  |          |
| <b>HEXYL LAURATE</b> (UNII: 4CG9F9W01Q)   |          |
| <b>HEXAMETHYLDISILOXANE</b> (UNII: D7M4659BPU)  |          |
| <b>FERROSFERRIC OXIDE</b> (UNII: XM0M87F357)  |          |
| <b>DISTEARDIMONIUM HECTORITE</b> (UNII: X687XDK09L)   |          |
| <b>BETAINE</b> (UNII: 3SCV180C9W)   |          |
| <b>BUTYLENE GLYCOL</b> (UNII: 3XUS85K0RA)   |          |
| <b>PENTYLENE GLYCOL</b> (UNII: 50C1307PZG)  |          |
| <b>MAGNESIUM SULFATE, UNSPECIFIED FORM</b> (UNII: DE08037SAB)                                       |          |
| <b>ASIAN GINSENG</b> (UNII: CUQ3A77YXI)   |          |
| <b>GLYCYRRHIZA GLABRA</b> (UNII: 2788Z9758H)  |          |
| <b>KIGELIA AFRICANA FRUIT</b> (UNII: L4J6XXD1E0)  |          |
| <b>DIOSCOREA VILLOSA TUBER</b> (UNII: IWY3IW2G8)  |          |
| <b>TRIETHOXYCAPRYLYLSILANE</b> (UNII: LDC331P08E)   |          |
| <b>STEARIC ACID</b> (UNII: 4ELV7Z65AP)  |          |
| <b>ALUMINUM OXIDE</b> (UNII: LMI26O6933)  |          |
| <b>GLYCERYL MONOCAPRYLATE</b> (UNII: TM2TZD4G4A)  |          |
| <b>PALMITIC ACID</b> (UNII: 2V16EO95H1)   |          |
| <b>CAPRYLYL GLYCOL</b> (UNII: 00YIU5438U)   |          |
| <b>ALUMINUM HYDROXIDE</b> (UNII: 5QB0T2IUN0)  |          |
| <b>PENTAERYTHRITOL TETRAKIS(3-(3,5-DI-TERT-BUTYL-4-HYDROXYPHENYL)PROPIONATE)</b> (UNII: 255PIF62MS) |          |
| <b>STANNIC OXIDE</b> (UNII: KM7N50LOS6)   |          |
| <b>ALCOHOL</b> (UNII: 3K9958V90M)   |          |

|   |  |
|---|--|
| <b>ETHYLHEXYLGLYCERIN</b> (UNII: 147D247K3P)          |  |
| <b>.ALPHA.-HEXYLCINNAMALDEHYDE</b> (UNII: 7X6O37OK2I) |  |
| <b>ISOMETHYL-.ALPHA.-IONONE</b> (UNII: 9XP4LC555B)    |  |
| <b>LINALOOL, (+/-)-</b> (UNII: D81QY6I88E)            |  |
| <b>.BETA.-CITRONELLOL, (R)-</b> (UNII: P01OUT964K)    |  |
| <b>GERANIOL</b> (UNII: L837108USY)                    |  |

### Packaging

| # | Item Code        | Package Description                                | Marketing Start Date | Marketing End Date |
|---|------------------|--|----------------------|--------------------|
| 1 | NDC:10345-904-45 | 1 in 1 BOX   | 05/01/2022           |                    |
| 1 |                  | 45 mL in 1 TUBE; Type 0: Not a Combination Product |                      |                    |

### Marketing Information

| Marketing Category | Application Number or Monograph Citation | Marketing Start Date | Marketing End Date |
|--------------------|--|----------------------|--------------------|
| OTC Monograph Drug | M020                                     | 05/01/2022           |                    |

**Labeler -** LABORATOIRES M&L (262533623)

Revised: 12/2023

LABORATOIRES M&L