

ANTI DIARRHEAL- loperamide hcl tablet
Chain Drug Marketing Association, Inc.

Quality Choice 44-375

Active ingredient (in each caplet)

Loperamide HCl 2 mg

Purpose

Anti-diarrheal

Use

controls symptoms of diarrhea, including Travelers' Diarrhea

Warnings

Allergy alert: Do not use if you have ever had a rash or other allergic reaction to loperamide HCl.

Heart alert: Taking more than directed can cause serious heart problems or death.

Do not use

if you have bloody or black stool.

Ask a doctor before use if you have

- a fever
- mucus in the stool
- a history of liver disease
- a history of abnormal heart rhythm

Ask a doctor or pharmacist before use if you are

taking a prescription drug. Loperamide may interact with certain prescription drugs.

When using this product,

tiredness, drowsiness, or dizziness may occur. Be careful when driving or operating machinery.

Stop use and ask a doctor if

- symptoms get worse
- diarrhea lasts for more than 2 days
- you get abdominal swelling or bulging. These may be signs of a serious condition.

If pregnant or breast-feeding,

ask a health professional before use.

Keep out of reach of children.

In case of overdose, get medical help or contact a Poison Control Center right away.

Directions

- **drink plenty of clear fluids to help prevent dehydration caused by diarrhea**
- find right dose on chart. If possible, use weight to dose; otherwise, use age.

adults and children 12 years and over	2 caplets after the first loose stool; 1 caplet after each subsequent loose stool; but no more than 4 caplets in 24 hours
children 9-11 years (60-95 lbs)	1 caplet after the first loose stool; 1/2 caplet after each subsequent loose stool; but no more than 3 caplets in 24 hours
children 6-8 years (48-59 lbs)	1 caplet after the first loose stool; 1/2 caplet after each subsequent loose stool; but no more than 2 caplets in 24 hours
children 2-5 years (34-47 lbs)	ask a doctor
children under 2 years (up to 33 lbs)	do not use

Other information

- **TAMPER EVIDENT: DO NOT USE IF OUTER PACKAGE IS OPENED OR BLISTER IS TORN OR BROKEN**
- store between 20°-25°C (68°-77°F)
- see end flap for expiration date and lot number

Inactive ingredients

corn starch, D&C yellow #10 aluminum lake, dibasic calcium phosphate dihydrate, FD&C blue #1 aluminum lake, magnesium stearate, microcrystalline cellulose, silicon dioxide

Questions or comments?

Call 1-800-426-9391 8:30 AM-4:00 PM ET, Monday-Friday

Principal Display Panel

QC®
QUALITY

CHOICE

NDC 83324-064-24

*Compare to the Active
Ingredient in IMODIUM® A-D

Anti-Diarrheal

Loperamide HCl Tablets, 2 mg

Anti-Diarrheal

Controls the Symptoms of Diarrhea

Actual

Size

24 Caplets

**TAMPER EVIDENT: DO NOT USE IF PACKAGE IS OPENED OR IF BLISTER
UNIT IS TORN, BROKEN OR SHOWS ANY SIGNS OF TAMPERING**

*This product is not manufactured or distributed by
Kenvue Inc., owner of the registered trademark IMODIUM® A-D.
50844 REV0619B37508

SATISFACTION

100%

QC

GUARANTEED

Distributed by CDMA, Inc.

Novi, MI 48375

www.qualitychoice.com

Questions: 800-935-2362

Drug Facts
Active ingredient (in each caplet) Loperamide HCl 2 mg
Purpose Anti-diarrheal
Use controls symptoms of diarrhea, including Travelers' Diarrhea

KEEP OUTER PACKAGE FOR COMPLETE PRODUCT INFORMATION

NDC 83324-064-24



***Compare to the Active Ingredient in IMODIUM® A-D**

Anti-Diarrheal

Loperamide HCl Tablets, 2 mg

Anti-Diarrheal

Controls the Symptoms of Diarrhea

Actual Size



24 Caplets

- To open, tear at perforations and remove a section.
- Use to cut through plastic for caplet.

*This product is not manufactured or distributed by Kenvue Inc., owner of the registered trademark IMODIUM® A-D. 50844 REV0619837508

Distributed by CDMA, Inc.
 Novi, MI 48375
 www.qualitychoice.com
 Questions: 800-935-2362

No Print / No Varnish
 Lot no. & Exp. date

TAMPER EVIDENT: DO NOT USE IF PACKAGE IS OPENED OR IF BLISTER UNIT IS TORN, BROKEN OR SHOWS ANY SIGNS OF TAMPERING



Drug Facts (continued)
 ■ store between 20°-25°C (68°-77°F) ■ see end flap for expiration date and lot number
Inactive ingredients corn starch, D&C yellow #10 aluminum lake, dibasic calcium phosphate dihydrate, FD&C blue #1 aluminum lake, magnesium stearate, microcrystalline cellulose, silicon dioxide
Questions or comments? Call 1-800-426-9391 8:30 AM-4:00 PM ET, Monday-Friday

Other information
 ■ TAMPER EVIDENT: DO NOT USE IF OUTER PACKAGE IS OPENED OR BLISTER IS TORN OR BROKEN

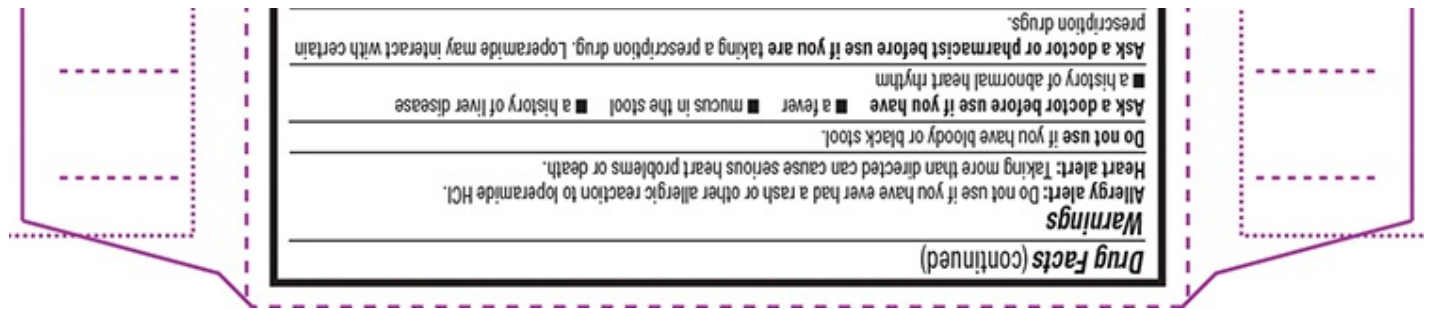
When using this product, tiredness, drowsiness, or dizziness may occur. Be careful when driving or operating machinery.

Stop use and ask a doctor if ■ symptoms get worse ■ diarrhea lasts for more than 2 days ■ you get abdominal swelling or bulging. These may be signs of a serious condition.
 If pregnant or breast-feeding, ask a health professional before use.
 Keep out of reach of children. In case of overdose, get medical help or contact a Poison Control Center right away.

Directions ■ drink plenty of clear fluids to help prevent dehydration caused by diarrhea
 ■ find right dose on chart. If possible, use weight to dose; otherwise, use age.

adults and children 12 years and over	2 caplets after the first loose stool; 1 caplet after each subsequent loose stool; but no more than 4 caplets in 24 hours
children 9-11 years (60-95 lbs)	1 caplet after the first loose stool; 1/2 caplet after each subsequent loose stool; but no more than 3 caplets in 24 hours
children 6-8 years (48-59 lbs)	1 caplet after the first loose stool; 1/2 caplet after each subsequent loose stool; but no more than 2 caplets in 24 hours
children 2-5 years (34-47 lbs)	ask a doctor
children under 2 years (up to 33 lbs)	do not use

B-0220-375-08-R
 REV0619837508



Quality Choice 44-375

ANTI DIARRHEAL
loperamide hcl tablet

Product Information

Product Type	HUMAN OTC DRUG	Item Code (Source)	NDC:83324-064
Route of Administration	ORAL		

Active Ingredient/Active Moiety

Ingredient Name	Basis of Strength	Strength
LOPERAMIDE HYDROCHLORIDE (UNII: 77TI35393C) (LOPERAMIDE - UNII:6X9OC3H4II)	LOPERAMIDE HYDROCHLORIDE	2 mg

Inactive Ingredients

Ingredient Name	Strength
STARCH, CORN (UNII: O8232NY3SJ)	
D&C YELLOW NO. 10 ALUMINUM LAKE (UNII: CQ3XH3DET6)	
DIBASIC CALCIUM PHOSPHATE DIHYDRATE (UNII: O7TSZ97GEP)	
FD&C BLUE NO. 1 ALUMINUM LAKE (UNII: J9EQA3S2JM)	
MAGNESIUM STEARATE (UNII: 70097M6I30)	
MICROCRYSTALLINE CELLULOSE (UNII: OP1R32D61U)	
SILICON DIOXIDE (UNII: ETJ7Z6XBU4)	

Product Characteristics

Color	green	Score	2 pieces
Shape	OVAL	Size	10mm
Flavor		Imprint Code	44;375
Contains			

Packaging

#	Item Code	Package Description	Marketing Start Date	Marketing End Date
1	NDC:83324-064-24	4 in 1 CARTON	06/17/2024	
1		6 in 1 BLISTER PACK; Type 0: Not a Combination		

Product			
Marketing Information			
Marketing Category	Application Number or Monograph Citation	Marketing Start Date	Marketing End Date
ANDA	ANDA076497	06/17/2024	

Labeler - Chain Drug Marketing Association, Inc. (011920774)

Establishment			
Name	Address	ID/FEI	Business Operations
LNK International, Inc.		832867837	manufacture(83324-064) , pack(83324-064)

Establishment			
Name	Address	ID/FEI	Business Operations
LNK International, Inc.		117025878	manufacture(83324-064)

Revised: 6/2024

Chain Drug Marketing Association, Inc.