

**TOPCARE CHERRY ANTACID SOFT CHEWS- calcium carbonate tablet, chewable**  
**TopCo**

*Disclaimer: Most OTC drugs are not reviewed and approved by FDA, however they may be marketed if they comply with applicable regulations and policies. FDA has not evaluated whether this product complies.*

-----

**Calcium carbonate 1177 mg**

**Active ingredient (in each chew)**

Calcium carbonate 1177 mg

**Purpose**

Antacid

**Uses** Relieves

- heartburn
- sour stomach
- acid indigestion
- upset stomach due to these symptoms

**Warnings**

**Ask a doctor or pharmacist before use if you are** now taking a prescription drug. Antacids may interact with certain prescription drugs.

**When using this product** do not take more than 6 chews in a 24-hour period, or use the maximum dosage for more than 2 weeks, except under the advice and supervision of a physician.

**If pregnant or breast-feeding**, ask a health professional before use.

**Keep out of reach of children.**

**Directions**

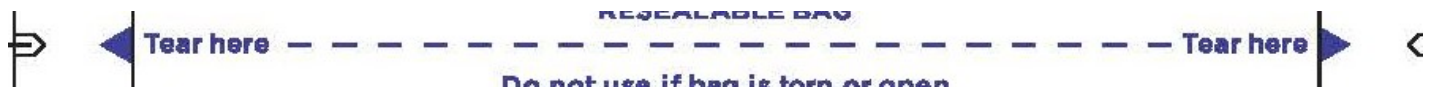
Chew and swallow 2 to 3 chews, as symptoms occur or as directed by a physician.

**Other information**

- **Each chew contains:** calcium 470 mg, magnesium 5 mg
- Contains milk and soy
- Store between 20° to 25°C (68° to 77°F) in a dry place
- Do not use if bag is torn or open

**Inactive ingredients:** Confectioner's sugar, corn starch, corn syrup, corn syrup solids, FD&C red #40 aluminum lake, glycerin, hydrogenated coconut oil, natural and artificial flavors, nonfat dry milk, soy lecithin, sucrose, water.

**Questions?** Or to report an adverse event call **1-800-245-2898**, Monday - Friday, 9AM - 4PM EST



Do not use if bag is torn or open

**TopCare**<sup>®</sup>  
health

COMPARE TO TUMS<sup>®</sup> CHEWY DELIGHTS<sup>®</sup> ACTIVE INGREDIENT\*

**ULTRA STRENGTH**

# Antacid Soft Chews

CALCIUM CARBONATE, 1177 mg

**Fast-Acting Relief**

**RELIEVES:**

- Heartburn
- Sour Stomach
- Acid Indigestion



**CHERRY FLAVOR**

NATURALLY & ARTIFICIALLY FLAVORED

**Gluten Free**



**32** Individually Wrapped  
**SOFT CHEWS**

- Heartburn • Sour Stomach
- Acid Indigestion

DISTRIBUTED BY TOPCO ASSOCIATES LLC  
 ELK GROVE VILLAGE, IL 60007  
 © TOPCO BSTA0222 QUESTIONS? 1-888-423-0139  
 topcare@topco.com www.topcarebrand.com  
 MADE IN USA WITH US AND IMPORTED INGREDIENTS



Scan here for more  
 information or call 1-888-423-0139



The Topcare® product is laboratory  
 tested to guarantee its highest quality.  
 Your total satisfaction is guaranteed.



\*This product is not manufactured or distributed by the owner  
 of the registered trademark Turn®, or any of its affiliates.

**Uses** Relieves

- heartburn ■ sour stomach ■ acid indigestion
- upset stomach due to these symptoms

**Warnings**

Ask a doctor or pharmacist before use if you are now  
 taking a prescription drug. Antacids may interact with certain  
 prescription drugs.

When using the product do not take more than 6 chews in a  
 24-hour period, or use the maximum dosage for more than 2  
 weeks, except under the advice and supervision of a physician.  
 If you are pregnant or breast-feeding, ask a health  
 professional before use. Keep out of reach of children.

**Directions**

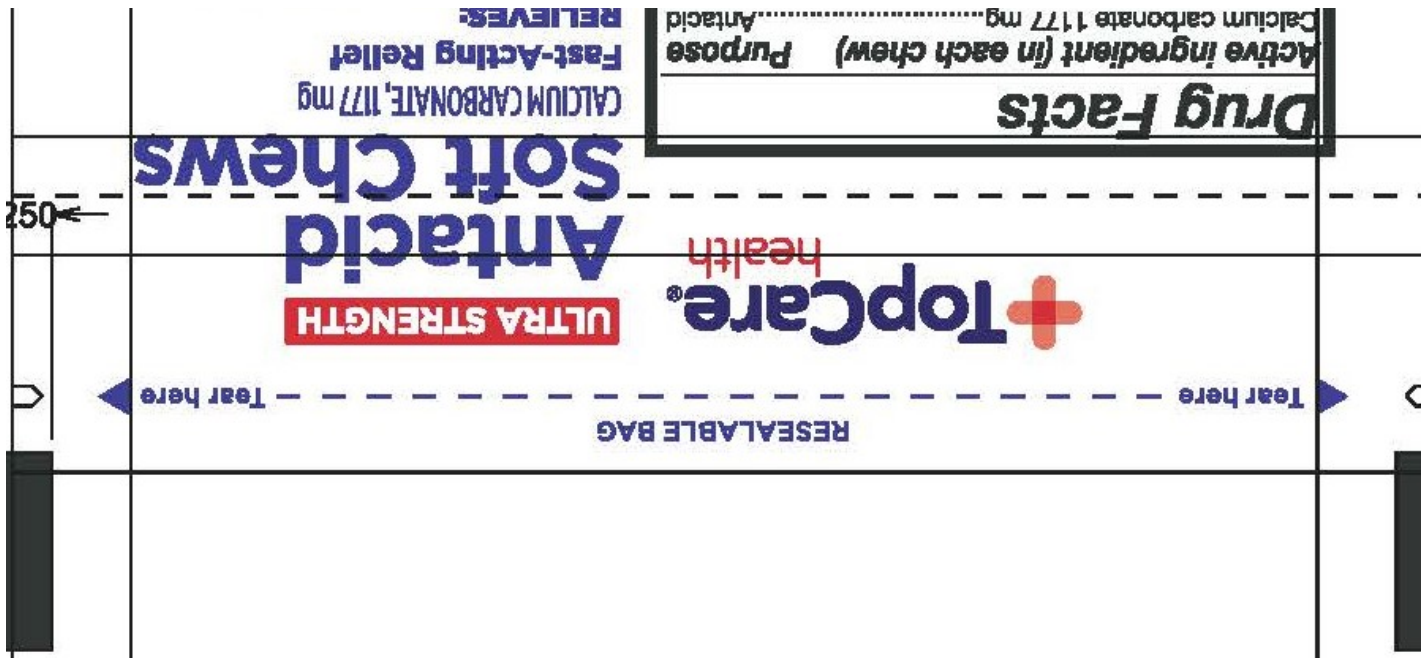
Chew and swallow 2 to 3 chews, as symptoms occur or  
 as directed by a physician.

**Other Information**

- Each chew contains: calcium 470 mg, magnesium 5 mg
- Contains milk and soy
- Store between 20° to 25°C (68° to 77°F) in a dry place
- Do not use if bag is torn or open

**Inactive Ingredients** Corrector's sugar, corn  
 starch, corn syrup, corn syrup solids, FD&C red #40  
 aluminum lake, glycerin, hydrogenated coconut oil,  
 natural and artificial flavors, nonfat dry milk, soy  
 lecithin, sucrose, water.

**Questions?** Or to report an adverse event call  
 1-800-245-2898, Monday - Friday, 9AM - 4PM EST



## TOPCARE CHERRY ANTACID SOFT CHEWS

calcium carbonate tablet, chewable

### Product Information

<b>Product Type</b>	HUMAN OTC DRUG	<b>Item Code (Source)</b>	NDC:76162-404
<b>Route of Administration</b>	ORAL		

### Active Ingredient/Active Moiety

Ingredient Name	Basis of Strength	Strength
<b>CALCIUM CARBONATE</b> (UNII: H0G9379FGK) (CALCIUM CATION - UNII:2M83C4R6ZB)	CALCIUM CARBONATE	1177 mg

### Inactive Ingredients

Ingredient Name	Strength
<b>WATER</b> (UNII: 059QF0KO0R)	

### Product Characteristics

<b>Color</b>	pink	<b>Score</b>	no score
<b>Shape</b>	RECTANGLE	<b>Size</b>	22mm
<b>Flavor</b>	CHERRY	<b>Imprint Code</b>	
<b>Contains</b>			

### Packaging

#	Item Code	Package Description	Marketing Start Date	Marketing End Date

<b>1</b>	NDC:76162-404-32	32 in 1 BAG; Type 0: Not a Combination Product	04/26/2022
----------	------------------	--	------------



### Marketing Information

Marketing Category	Application Number or Monograph Citation	Marketing Start Date	Marketing End Date
OTC monograph final	part331	04/26/2022	

**Labeler** - TopCo (006935977)

**Registrant** - Bestco LLC (002149136)

### Establishment

Name	Address	ID/FEI	Business Operations
Bestco LLC		002149136	manufacture(76162-404)