

**DIPROLENE- betamethasone dipropionate lotion**  
**Merck Sharp & Dohme Corp.**

-----

**HIGHLIGHTS OF PRESCRIBING INFORMATION**

These highlights do not include all the information needed to use DIPROLENE Lotion safely and effectively. See full prescribing information for DIPROLENE Lotion.

**DIPROLENE® (augmented betamethasone dipropionate) Lotion, 0.05% for topical use**  
**Initial U.S. Approval: 1983**

----- **INDICATIONS AND USAGE** -----

DIPROLENE Lotion is a corticosteroid indicated for the relief of the inflammatory and pruritic manifestations of corticosteroid-responsive dermatoses in patients 13 years of age and older. (1)

----- **DOSAGE AND ADMINISTRATION** -----

- Apply a few drops to the affected skin areas once or twice daily and massage lightly until the lotion disappears. (2)
- Discontinue therapy when control is achieved. (2)
- Limit therapy to no more than 2 consecutive weeks. (2)
- Use no more than 50 mL per week. (2)
- Do not use with occlusive dressings unless directed by a physician. (2)
- Avoid use on the face, groin, or axillae, or if skin atrophy is present at the treatment site. (2)
- Not for oral, ophthalmic, or intravaginal use. (2)

----- **DOSAGE FORMS AND STRENGTHS** -----

- Lotion, 0.05% (3)

----- **CONTRAINDICATIONS** -----

- Hypersensitivity to any component of this medicine. (4)

----- **WARNINGS AND PRECAUTIONS** -----

- Effects on endocrine system: DIPROLENE Lotion can cause reversible HPA axis suppression with the potential for glucocorticosteroid insufficiency during and after withdrawal of treatment. Risk factor(s) include the use of high-potency topical corticosteroids, use over a large surface area or to areas under occlusion, prolonged use, altered skin barrier, liver failure, and use in pediatric patients. Modify use should HPA axis suppression develop. (5.1, 8.4)

----- **ADVERSE REACTIONS** -----

Most common adverse reactions (<1%) are: erythema, folliculitis, pruritus, and vesiculation. (6.1)

To report SUSPECTED ADVERSE REACTIONS, contact Merck Sharp & Dohme Corp., a subsidiary of Merck & Co., Inc., at 1-877-888-4231 or FDA at 1-800-FDA-1088 or [www.fda.gov/medwatch](http://www.fda.gov/medwatch).

See 17 for PATIENT COUNSELING INFORMATION.

Revised: 9/2015

---

**FULL PRESCRIBING INFORMATION: CONTENTS\***

**1 INDICATIONS AND USAGE**

**2 DOSAGE AND ADMINISTRATION**

**3 DOSAGE FORMS AND STRENGTHS**

**4 CONTRAINDICATIONS**

**5 WARNINGS AND PRECAUTIONS**

5.1 Effects on Endocrine System

5.2 Allergic Contact Dermatitis

**6 ADVERSE REACTIONS**

6.1 Clinical Trials Experience

6.2 Postmarketing Experience

## **8 USE IN SPECIFIC POPULATIONS**

- 8.1 Pregnancy
- 8.3 Nursing Mothers
- 8.4 Pediatric Use
- 8.5 Geriatric Use

## **11 DESCRIPTION**

## **12 CLINICAL PHARMACOLOGY**

- 12.1 Mechanism of Action
- 12.2 Pharmacodynamics
- 12.3 Pharmacokinetics

## **13 NONCLINICAL TOXICOLOGY**

- 13.1 Carcinogenesis, Mutagenesis, Impairment of Fertility

## **14 CLINICAL STUDIES**

## **16 HOW SUPPLIED/STORAGE AND HANDLING**

## **17 PATIENT COUNSELING INFORMATION**

\* Sections or subsections omitted from the full prescribing information are not listed.

---

## **FULL PRESCRIBING INFORMATION**

### **1 INDICATIONS AND USAGE**

DIPROLENE<sup>®</sup> Lotion is a corticosteroid indicated for the relief of the inflammatory and pruritic manifestations of corticosteroid-responsive dermatoses in patients 13 years of age or older.

### **2 DOSAGE AND ADMINISTRATION**

Apply a few drops of DIPROLENE Lotion to the affected skin areas once or twice daily and massage lightly until the lotion disappears.

Therapy should be discontinued when control is achieved. If no improvement is seen within 2 weeks, reassessment of diagnosis may be necessary. DIPROLENE Lotion is a super-high-potency topical corticosteroid. **Treatment with DIPROLENE Lotion should be limited to 2 consecutive weeks and amounts should not exceed 50 mL per week because of the potential for the drug to suppress the hypothalamic-pituitary-adrenal (HPA) axis.**

DIPROLENE Lotion should not be used with occlusive dressings unless directed by a physician.

DIPROLENE Lotion is for topical use only. It is not for oral, ophthalmic, or intravaginal use.

Avoid use on the face, groin, or axillae, or if skin atrophy is present at the treatment site.

### **3 DOSAGE FORMS AND STRENGTHS**

Lotion, 0.05%. Each gram of DIPROLENE Lotion, 0.05% contains 0.643 mg betamethasone dipropionate (equivalent to 0.5 mg betamethasone) in a colorless, clear to translucent lotion.

### **4 CONTRAINDICATIONS**

DIPROLENE Lotion is contraindicated in patients who are hypersensitive to betamethasone dipropionate, to other corticosteroids, or to any ingredient in this preparation.

### **5 WARNINGS AND PRECAUTIONS**

## 5.1 Effects on Endocrine System

DIPROLENE Lotion can produce reversible hypothalamic-pituitary-adrenal (HPA) axis suppression with the potential for glucocorticosteroid insufficiency. This may occur during treatment or after withdrawal of treatment. Factors that predispose to HPA axis suppression include the use of high-potency steroids, large treatment surface areas, prolonged use, use of occlusive dressings, altered skin barrier, liver failure, and young age.

Evaluation for HPA axis suppression may be done by using the adrenocorticotrophic hormone (ACTH) stimulation test.

In a trial evaluating the effects of DIPROLENE Lotion on the HPA axis, DIPROLENE Lotion was applied once daily at 7 mL per day for 21 days to diseased scalp and body skin in subjects with scalp psoriasis, DIPROLENE Lotion was shown to lower plasma cortisol levels below normal limits in 2 out of 11 subjects. HPA axis suppression in these subjects was transient and returned to normal within a week. In one of these subjects, plasma cortisol levels returned to normal while treatment continued.

If HPA axis suppression is documented, gradually withdraw the drug, reduce the frequency of application, or substitute with a less potent corticosteroid. Infrequently, signs and symptoms of steroid withdrawal may occur, requiring supplemental systemic corticosteroids.

Cushing's syndrome and hyperglycemia may also occur with topical corticosteroids. These events are rare and generally occur after prolonged exposure to excessively large doses, especially of high-potency topical corticosteroids.

Pediatric patients may be more susceptible to systemic toxicity due to their larger skin surface to body mass ratios [see *Use in Specific Populations (8.4)*].

## 5.2 Allergic Contact Dermatitis

Allergic contact dermatitis with corticosteroids is usually diagnosed by observing failure to heal rather than noting a clinical exacerbation. Such an observation should be corroborated with appropriate diagnostic patch testing. If irritation develops, topical corticosteroids should be discontinued and appropriate therapy instituted.

## 6 ADVERSE REACTIONS

### 6.1 Clinical Trials Experience

Because clinical trials are conducted under widely varying conditions, adverse reaction rates observed in the clinical trials of a drug cannot be directly compared to rates in the clinical trials of another drug and may not reflect the rates observed in clinical practice.

In controlled clinical trials, adverse reactions associated with the use of DIPROLENE Lotion reported at a frequency of less than 1% included erythema, folliculitis, pruritus, and vesiculation.

### 6.2 Postmarketing Experience

Because adverse reactions are reported voluntarily from a population of uncertain size, it is not always possible to reliably estimate their frequency or establish a causal relationship to drug exposure.

Postmarketing reports for local adverse reactions to topical corticosteroids may also include: skin atrophy, striae, telangiectasias, burning, irritation, dryness, acneiform eruptions, hypopigmentation, perioral dermatitis, allergic contact dermatitis, secondary infection, hypertrichosis, and miliaria.

Hypersensitivity reactions, consisting of predominantly skin signs and symptoms, e.g., contact dermatitis, pruritus, bullous dermatitis, and erythematous rash have been reported.

## **8 USE IN SPECIFIC POPULATIONS**

### **8.1 Pregnancy**

Teratogenic Effects: Pregnancy Category C

There are no adequate and well-controlled studies in pregnant women. DIPROLENE Lotion should be used during pregnancy only if the potential benefit justifies the potential risk to the fetus.

Betamethasone dipropionate has been shown to be teratogenic in rabbits when given by the intramuscular route at doses of 0.05 mg/kg. The abnormalities observed included umbilical hernias, cephalocele, and cleft palate.

### **8.3 Nursing Mothers**

Systemically administered corticosteroids appear in human milk and can suppress growth, interfere with endogenous corticosteroid production, or cause other untoward effects. It is not known whether topical administration of corticosteroids can result in sufficient systemic absorption to produce detectable quantities in human milk. Because many drugs are excreted in human milk, caution should be exercised when DIPROLENE Lotion is administered to a nursing woman.

### **8.4 Pediatric Use**

Use of DIPROLENE Lotion in pediatric patients younger than 13 years of age is not recommended due to the potential for HPA axis suppression [see *Warnings and Precautions (5.1)*].

In an open-label HPA axis safety trial in subjects 3 months to 12 years of age with atopic dermatitis, DIPROLENE AF Cream 0.05% was applied twice daily for 2 to 3 weeks over a mean body surface area of 58% (range 35% to 95%). In 19 of 60 (32%) evaluable subjects, adrenal suppression was indicated by either a  $\leq 5$  mcg/dL pre-stimulation cortisol, or a cosyntropin post-stimulation cortisol  $\leq 18$  mcg/dL and/or an increase of  $< 7$  mcg/dL from the baseline cortisol. Out of the 19 subjects with HPA axis suppression, 4 subjects were tested 2 weeks after discontinuation of DIPROLENE AF Cream, and 3 of the 4 (75%) had complete recovery of HPA axis function. The proportion of subjects with adrenal suppression in this trial was progressively greater, the younger the age group.

Because of a higher ratio of skin surface area to body mass, pediatric patients are at a greater risk than adults of systemic toxicity when treated with topical drugs. They are, therefore, also at greater risk of HPA axis suppression and adrenal insufficiency upon the use of topical corticosteroids.

Rare systemic effects such as Cushing's syndrome, linear growth retardation, delayed weight gain, and intracranial hypertension have been reported in pediatric patients, especially those with prolonged exposure to large doses of high potency topical corticosteroids.

Local adverse reactions including skin atrophy have also been reported with use of topical corticosteroids in pediatric patients.

Avoid use of DIPROLENE Lotion in the treatment of diaper dermatitis.

### **8.5 Geriatric Use**

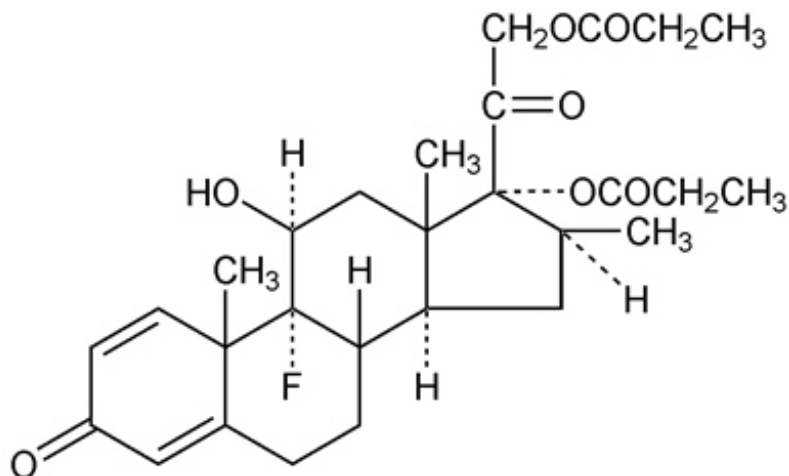
Clinical trials of DIPROLENE Lotion included 56 subjects who were 65 years of age and over and 9 subjects who were 75 years of age and over. There was a numerical difference for application site reactions (most frequently reported events were burning and stinging) which occurred in 15% (10/65) of geriatric subjects and 11% (38/342) of subjects less than 65 years of age. Other reported clinical experience has not identified differences in responses between the elderly and younger patients. However, greater sensitivity of some older individuals cannot be ruled out.

## **11 DESCRIPTION**

DIPROLENE (augmented betamethasone dipropionate) Lotion contains betamethasone dipropionate

USP, a synthetic adrenocorticosteroid, for topical use. Betamethasone, an analog of prednisolone, has a high degree of corticosteroid activity and a slight degree of mineralocorticoid activity. Betamethasone dipropionate is the 17, 21-dipropionate ester of betamethasone.

Chemically, betamethasone dipropionate is 9-fluoro-11 $\beta$ ,17,21- trihydroxy-16 $\beta$ -methylpregna-1,4-diene-3,20-dione 17,21-dipropionate, with the empirical formula C<sub>28</sub>H<sub>37</sub>FO<sub>7</sub>, a molecular weight of 504.6, and the following structural formula:



It is a white to creamy-white, odorless powder insoluble in water; freely soluble in acetone and in chloroform; sparingly soluble in alcohol.

Each gram of DIPROLENE Lotion 0.05% contains 0.643 mg betamethasone dipropionate USP (equivalent to 0.5 mg betamethasone), in a colorless, clear to translucent lotion base of hydroxypropyl cellulose; isopropyl alcohol (30%); phosphoric acid used to adjust the pH; propylene glycol; purified water; and sodium phosphate monobasic monohydrate.

## 12 CLINICAL PHARMACOLOGY

### 12.1 Mechanism of Action

Corticosteroids play a role in cellular signaling, immune function, inflammation, and protein regulation; however, the precise mechanism of action of DIPROLENE Lotion in corticosteroid responsive dermatoses is unknown.

### 12.2 Pharmacodynamics

#### Vasoconstrictor Assay

Trials performed with DIPROLENE Lotion, 0.05% indicate that it is in the super-high range of potency as demonstrated in vasoconstrictor trials in healthy subjects when compared with other topical corticosteroids. However, similar blanching scores do not necessarily imply therapeutic equivalence.

### 12.3 Pharmacokinetics

No pharmacokinetic trials have been conducted with DIPROLENE Lotion.

The extent of percutaneous absorption of topical corticosteroids is determined by many factors including the vehicle, the integrity of the epidermal barrier, and the use of occlusive dressings [see *Dosage and Administration* (2)].

Topical corticosteroids can be absorbed through normal intact skin. Inflammation and/or other disease processes in the skin may increase percutaneous absorption. Occlusive dressings substantially increase the percutaneous absorption of topical corticosteroids [*see Dosage and Administration (2)*].

Once absorbed through the skin, topical corticosteroids enter pharmacokinetic pathways similar to systemically administered corticosteroids. Corticosteroids are bound to plasma proteins in varying degrees, are metabolized primarily in the liver, and excreted by the kidneys. Some of the topical corticosteroids and their metabolites are also excreted into the bile.

## 13 NONCLINICAL TOXICOLOGY

### 13.1 Carcinogenesis, Mutagenesis, Impairment of Fertility

Long-term animal studies have not been performed to evaluate the carcinogenic potential of betamethasone dipropionate. Betamethasone was negative in the bacterial mutagenicity assay (*Salmonella typhimurium* and *Escherichia coli*), and in the mammalian cell mutagenicity assay (CHO/HGPRT). It was positive in the *in vitro* human lymphocyte chromosome aberration assay, and equivocal in the *in vivo* mouse bone marrow micronucleus assay.

Studies in rabbits, mice, and rats using intramuscular doses up to 1, 33, and 2 mg/kg, respectively, resulted in dose-related increases in fetal resorptions in rabbits and mice.

## 14 CLINICAL STUDIES

The safety and efficacy of DIPROLENE Lotion for the treatment of corticosteroid-responsive dermatoses have been evaluated in two randomized vehicle controlled trials, one in scalp psoriasis and one in seborrheic dermatitis. A total of 263 subjects, of whom 131 received DIPROLENE Lotion, were included in these trials. These trials evaluated DIPROLENE Lotion applied once daily for 21 days.

DIPROLENE Lotion was shown to be effective in relieving the signs and symptoms of corticosteroid responsive dermatoses.

## 16 HOW SUPPLIED/STORAGE AND HANDLING

DIPROLENE Lotion 0.05% is a colorless, clear to translucent lotion supplied in 30-mL (29 g) (NDC 0085-0962-01) and 60-mL (58 g) (NDC 0085-0962-02) plastic bottles.

**Store at 25°C (77°F); excursions permitted to 15-30°C (59-86°F) [see USP Controlled Room Temperature].**

## 17 PATIENT COUNSELING INFORMATION

Inform patients of the following:

- Discontinue therapy when control is achieved, unless directed otherwise by the physician.
- Use no more than 50 mL per week of DIPROLENE Lotion and for no longer than 2 consecutive weeks.
- Avoid contact with the eyes.
- Avoid use of DIPROLENE Lotion on the face, underarms, or groin areas unless directed by the physician.
- Do not occlude the treatment area with bandage or other covering, unless directed by the physician.
- Note that local reactions and skin atrophy are more likely to occur with occlusive use, prolonged use or use of higher potency corticosteroids.

Manufactured for: Merck Sharp & Dohme Corp., a subsidiary of  
**MERCK & CO., INC.**, Whitehouse Station, NJ 08889, USA

Manufactured by: Bayer Inc.  
Pointe Claire, Quebec H9R 1B4, Canada

For patent information: [www.merck.com/product/patent/home.html](http://www.merck.com/product/patent/home.html)

Copyright © 1988, 2004, 2014 Merck Sharp & Dohme Corp., a subsidiary of **Merck & Co., Inc.**  
All rights reserved.

uspi-mk1460-lt-1509r004

**PRINCIPAL DISPLAY PANEL - 30 mL Bottle Box**

**30 mL (29 g)**  
NDC 0085-**0962**-01

***Diprolene***<sup>®</sup>  
(augmented  
betamethasone dipropionate)  
**Lotion, 0.05%\***

\*Strength expressed  
as betamethasone

**For topical  
use only.**

**Not for oral,  
ophthalmic, or  
intravaginal use.**

**DO NOT USE IN EYES**

**Rx only**



## DIPROLENE

betamethasone dipropionate lotion

### Product Information

Product Type	HUMAN PRESCRIPTION DRUG	Item Code (Source)	NDC:0085-0962
Route of Administration	TOPICAL		

### Active Ingredient/Active Moiety

Ingredient Name	Basis of Strength	Strength
betamethasone dipropionate (UNII: 826 Y6090 IU) (betamethasone - UNII:9842X06Q6M)	betamethasone	0.5 mg in 1 mL

### Inactive Ingredients

Ingredient Name	Strength
isopropyl alcohol (UNII: ND2M416302)	
hydroxypropyl cellulose (type H) (UNII: RFW2ET671P)	



<b>propylene glycol</b> (UNII: 6DC9Q167V3)	
<b>sodium phosphate, monobasic, monohydrate</b> (UNII: 593YOG76RN)	
<b>phosphoric acid</b> (UNII: E4GA8884NN)	
<b>water</b> (UNII: 059QF0K00R)	

### Packaging

#	Item Code	Package Description	Marketing Start Date	Marketing End Date
1	NDC:0085-0962-01	1 in 1 BOX		
1		30 mL in 1 BOTTLE, PLASTIC; Type 0: Not a Combination Product		
2	NDC:0085-0962-02	1 in 1 BOX		
2		60 mL in 1 BOTTLE, PLASTIC; Type 0: Not a Combination Product		

### Marketing Information

Marketing Category	Application Number or Monograph Citation	Marketing Start Date	Marketing End Date
NDA	NDA019716	08/01/1988	

**Labeler** - Merck Sharp & Dohme Corp. (001317601)

Revised: 9/2015

Merck Sharp & Dohme Corp.