

NEXICLON XR- clonidine tablet, extended release

Athena Bioscience, LLC

HIGHLIGHTS OF PRESCRIBING INFORMATION

NEXICLON™ XR (clonidine) Extended-Release Tablets

These highlights do not include all the information needed to use NEXICLON™ XR (clonidine) Extended-Release Tablets safely and effectively. See full prescribing information for NEXICLON™ XR (clonidine) Extended-Release Tablets.

NEXICLON™ XR (clonidine) Extended-Release Tablets

Initial U.S. Approval: 1974

INDICATIONS AND USAGE

NEXICLON XR is a central alpha-adrenergic agonist indicated for:

- Treatment of hypertension (1)

DOSAGE AND ADMINISTRATION

- Initial dose: 0.17 mg once daily. Elderly patients may benefit from a lower initial dose. Initial dose is recommended to be administered at bedtime. (2.1)
- Maintenance dose: Further increments of 0.09 mg once daily may be made at weekly intervals if necessary until the desired response is achieved. The therapeutic doses most commonly employed have ranged from 0.17 mg to 0.52 mg once daily. (2.2)
- Patients with renal impairment: Up-titrate slowly (2.4)

DOSAGE FORMS AND STRENGTHS

Extended-Release Tablets: 0.17, 0.26 mg clonidine base (3)

CONTRAINDICATIONS

- Known hypersensitivity to clonidine (rash, angioedema) (4)

WARNINGS AND PRECAUTIONS

- Patients should not discontinue therapy without consulting a physician. Dose reduction should be performed gradually over a 2- to 4-day period to avoid withdrawal symptomatology. Rare instances of hypertensive encephalopathy, cerebrovascular accidents and death have been reported after clonidine withdrawal. (5.1)
- Monitor closely and up-titrate slowly in patients with severe coronary insufficiency, conduction disturbances, recent myocardial infarction, cerebrovascular disease, or chronic renal failure. (5.2)
- Patients who engage in potentially hazardous activities, such as operating machinery or driving, should be advised of a possible sedative effect of clonidine. (5.2)
- In perioperative use, NEXICLON XR may be administered up to 28 hours prior to surgery and resumed the following day. (5.3)

ADVERSE REACTIONS

There is very little experience with NEXICLON XR in controlled trials. Based on this limited experience, the adverse event profile appears similar with the immediate-release clonidine formulation. The most commonly expected adverse reactions are dry mouth, drowsiness, and dizziness. (6)

To report SUSPECTED ADVERSE REACTIONS, contact Athena Bioscience LLC at 1-833-874-2664 and www.athenabioscience.com or FDA at 1-800-FDA-1088 or www.fda.gov/medwatch.

DRUG INTERACTIONS

- Sedating drugs: Clonidine may potentiate the CNS-depressive effects of alcohol, barbiturates or other sedating drugs. (7)
- Tricyclic antidepressants: May reduce the hypotensive effect of clonidine, necessitating an increase in clonidine dose. (7)
- Drugs known to affect sinus node function or AV nodal conduction (e.g., digitalis, calcium channel blockers, beta-blockers): Additive effects such as bradycardia and AV block. (7)

-----**USE IN SPECIFIC POPULATIONS**-----

- Pregnancy Category C (8.1)
- Clonidine is secreted in human milk. (8.2)
- Safety and effectiveness in children have not been established. (8.3)
- Renal impairment: Dose may need adjustment. (2.4)

See 17 for **PATIENT COUNSELING INFORMATION**.

Revised: 3/2022

FULL PRESCRIBING INFORMATION: CONTENTS*

1 INDICATIONS AND USAGE

2 DOSAGE AND ADMINISTRATION

2.1 Initial Dose

2.2 Maintenance Dose

2.3 Patients Currently Using Clonidine Hydrochloride Immediate-Release Tablets

2.4 Renal Impairment

3 DOSAGE FORMS AND STRENGTHS

4 CONTRAINDICATIONS

5 WARNINGS AND PRECAUTIONS

5.1 Withdrawal

5.2 General Precautions

5.3 Perioperative Use

6 ADVERSE REACTIONS

6.1 NEXICLON XR Clinical Trial Experience

6.2 Experience with Immediate-Release Clonidine

7 DRUG INTERACTIONS

8 USE IN SPECIFIC POPULATIONS

8.1 Pregnancy

8.2 Nursing Mothers

8.3 Pediatric Use

8.4 Geriatric Use

8.5 Patients with Renal Impairment

10 OVERDOSAGE

11 DESCRIPTION

12 CLINICAL PHARMACOLOGY

12.1 Mechanism of Action

12.2 Pharmacodynamics

12.3 Pharmacokinetics

13 NONCLINICAL TOXICOLOGY

13.1 Carcinogenesis, Mutagenesis, Impairment of Fertility

13.2 Animal Toxicology and/or Pharmacology

14 CLINICAL STUDIES

16 HOW SUPPLIED/STORAGE AND HANDLING

17 PATIENT COUNSELING INFORMATION

* Sections or subsections omitted from the full prescribing information are not listed.

FULL PRESCRIBING INFORMATION

1 INDICATIONS AND USAGE

NEXICLON XR is indicated in the treatment of hypertension. NEXICLON XR may be employed alone or concomitantly with other antihypertensive agents.

2 DOSAGE AND ADMINISTRATION

The dose of NEXICLON XR must be adjusted according to the patient's individual blood pressure response. The following is a general guide to its administration in adults.

2.1 Initial Dose

Dosing with NEXICLON XR should be initiated at 0.17 mg once daily. Elderly patients may benefit from a lower initial dose [see *Use in Specific Populations (8.4)*]. Initial dose is recommended to be administered at bedtime.

2.2 Maintenance Dose

Further increments of 0.09 mg once daily may be made at weekly intervals if necessary until the desired response is achieved. The therapeutic doses most commonly employed have ranged from 0.17 mg to 0.52 mg once daily.

NEXICLON XR was studied at doses of 0.17 to 0.52 mg once daily. Doses higher than 0.52 mg per day were not evaluated and are not recommended.

2.3 Patients Currently Using Clonidine Hydrochloride Immediate-Release Tablets

The recommended dose of NEXICLON XR for patients who are currently taking clonidine hydrochloride immediate-release tablets is provided in the table below.

	NEXICLON XR (clonidine) Extended-Release Tablets	Equivalent dose of Clonidine HCl Immediate-Release Tablets
Initial Dose	0.17 mg once daily	0.1 mg twice daily
Maintenance Dose Titration Increments	0.09 mg once daily	0.05 mg twice daily
Common Doses Used for Blood Pressure Effect	0.17 mg once daily	0.1 mg twice daily
	0.34 mg once daily	0.2 mg twice daily
	0.52 mg once daily	0.3 mg twice daily

2.4 Renal Impairment

Adjust dosage according to the degree of impairment. In patients with end stage kidney disease on maintenance dialysis, start at 0.09 mg per day and up-titrate slowly to

minimize dose related adverse events.

Monitor patients carefully, especially for bradycardia, sedation and hypotension. Only a minimal amount of clonidine is removed during routine hemodialysis.

In patients with moderate to severe kidney impairment not undergoing dialysis, initiate clonidine at the same dose as for patients without renal impairment. Up-titrate slowly and monitor for dose-related adverse events.

3 DOSAGE FORMS AND STRENGTHS

0.17 mg Extended-Release Tablets (clonidine base)

0.26 mg Extended-Release Tablets (clonidine base)

4 CONTRAINDICATIONS

NEXICLON XR should not be used in patients with known hypersensitivity to clonidine [*see Warnings and Precautions (5.2)*].

5 WARNINGS AND PRECAUTIONS

5.1 Withdrawal

Instruct patients not to discontinue therapy without consulting their physician. Sudden cessation of clonidine treatment has resulted in symptoms such as nervousness, agitation, headache, and tremor accompanied or followed by a rapid rise in blood pressure and elevated catecholamine concentrations in the plasma. The likelihood of such reactions to discontinuation of clonidine therapy appears to be greater after administration of higher doses or continuation of concomitant beta-blocker treatment and special caution is therefore advised in these situations. Rare instances of hypertensive encephalopathy, cerebrovascular accidents and death have been reported after clonidine withdrawal. When discontinuing therapy with NEXICLON XR, reduce the dose gradually over 2 to 4 days to avoid withdrawal symptoms.

An excessive rise in blood pressure following discontinuation of NEXICLON XR can be reversed by administration of oral clonidine hydrochloride or by intravenous phentolamine. If therapy is to be discontinued in patients receiving a beta-blocker and clonidine concurrently, the beta-blocker should be withdrawn several days before the gradual discontinuation of NEXICLON XR.

Because children commonly have gastrointestinal illnesses that lead to vomiting, they may be particularly susceptible to hypertensive episodes resulting from abrupt inability to take medication.

5.2 General Precautions

In patients who have developed localized contact sensitization to a clonidine transdermal system, substitution of oral clonidine therapy may be associated with the development of a generalized skin rash.

In patients who develop an allergic reaction to a clonidine transdermal system,

substitution of oral clonidine may also elicit an allergic reaction (including generalized rash, urticaria, or angioedema).

Monitor carefully and up-titrate slowly in patients with severe coronary insufficiency, conduction disturbances, recent myocardial infarction, cerebrovascular disease, or chronic renal failure.

Patients who engage in potentially hazardous activities, such as operating machinery or driving, should be advised of a possible sedative effect of clonidine. The sedative effect may be increased by concomitant use of alcohol, barbiturates, or other sedating drugs.

5.3 Perioperative Use

NEXICLON XR may be administered up to 28 hours prior to surgery and resumed the following day. Blood pressure should be carefully monitored during surgery and additional measures to control blood pressure should be available if required.

6 ADVERSE REACTIONS

The following serious adverse reactions are discussed in detail elsewhere in the labeling:

- Withdrawal [*see Warnings and Precautions (5.1)*]
- Allergic reactions [*see Warnings and Precautions (5.2)*]

6.1 NEXICLON XR Clinical Trial Experience

There is very limited experience with NEXICLON XR in controlled trials. Based on this limited experience, the adverse event profile appears similar with to the immediate-release clonidine formulation.

6.2 Experience with Immediate-Release Clonidine

Most adverse reactions are mild and tend to diminish with continued therapy. The most frequent (which also appear to be dose-related) are dry mouth (approximately 40%); drowsiness (approximately 33%); dizziness (approximately 16%); constipation and sedation (approximately 10% each).

The following less frequent adverse reactions have also been reported in patients receiving immediate-release clonidine, but in many cases patients were receiving concomitant medication and a causal relationship has not been established.

Body as a Whole: Fatigue, fever, headache, pallor, weakness, and withdrawal syndrome. Also reported were a weakly positive Coombs' test and increased sensitivity to alcohol.

Cardiovascular: Bradycardia, congestive heart failure, electrocardiographic abnormalities (i.e., sinus node arrest, junctional bradycardia, high degree AV block and arrhythmias), orthostatic symptoms, palpitations, Raynaud's phenomenon, syncope, and tachycardia. Cases of sinus bradycardia and atrioventricular block have been reported, both with and without the use of concomitant digitalis.

Central Nervous System (CNS): Agitation, anxiety, delirium, delusional perception, hallucinations (including visual and auditory), insomnia, mental depression, nervousness, other behavioral changes, paresthesia, restlessness, sleep disorder, and vivid dreams or nightmares.

Dermatological: Alopecia, angioneurotic edema, hives, pruritus, rash, and urticaria.

Gastrointestinal: Abdominal pain, anorexia, constipation, hepatitis, malaise, mild transient abnormalities in liver function tests, nausea, parotitis, pseudo-obstruction (including colonic pseudo-obstruction), salivary gland pain, and vomiting.

Genitourinary: Decreased sexual activity, difficulty in micturition, erectile dysfunction, loss of libido, nocturia, and urinary retention.

Hematologic: Thrombocytopenia.

Metabolic: Gynecomastia, transient elevation of blood glucose or serum creatine phosphokinase, and weight gain.

Musculoskeletal: Leg cramps and muscle or joint pain.

Oro-otolaryngeal: Dryness of the nasal mucosa.

Ophthalmological: Accommodation disorder, blurred vision, burning of the eyes, decreased lacrimation, and dryness of eyes.

7 DRUG INTERACTIONS

No drug interaction studies have been conducted with NEXICLON XR. The following have been reported with other oral formulations of clonidine.

Clonidine may potentiate the CNS-depressive effects of alcohol, barbiturates or other sedating drugs. If a patient receiving clonidine hydrochloride is also taking tricyclic antidepressants, the hypotensive effect of clonidine may be reduced, necessitating an increase in the clonidine dose.

Monitor heart rate in patients receiving clonidine concomitantly with agents known to affect sinus node function or AV nodal conduction, e.g., digitalis, calcium channel blockers, and beta-blockers. Sinus bradycardia resulting in hospitalization and pacemaker insertion has been reported in association with the use of clonidine concomitantly with diltiazem or verapamil.

Amitriptyline in combination with clonidine enhances the manifestation of corneal lesions in rats [see *Nonclinical Toxicology* (13.2)].

Alcohol: Based on in vitro studies, high concentration of alcohol may increase the rate of release of NEXICLON XR.

8 USE IN SPECIFIC POPULATIONS

8.1 Pregnancy

Pregnancy Category C. Reproduction studies performed in rabbits at doses up to approximately 3 times the oral maximum recommended daily human dose (MRDHD) of clonidine hydrochloride produced no evidence of a teratogenic or embryotoxic potential in rabbits. In rats, however, doses as low as 1/3 the oral MRDHD (1/15 the MRDHD on a mg/m² basis) of clonidine were associated with increased resorptions in a study in which dams were treated continuously from 2 months prior to mating. Increased resorptions were not associated with treatment at the same time or at higher dose

levels (up to 3 times the oral MRDHD) when the dams were treated on gestation days 6 to 15. Increases in resorption were observed at much higher dose levels (40 times the oral MRDHD on a mg/kg basis; 4 to 8 times the MRDHD on a mg/m² basis) in mice and rats treated on gestation days 1 to 14 (lowest dose employed in the study was 500 mcg/kg).

No adequate, well-controlled studies have been conducted in pregnant women. Because animal reproduction studies are not always predictive of human response, this drug should be used during pregnancy only if clearly needed.

8.2 Nursing Mothers

Clonidine is secreted in human milk.

8.3 Pediatric Use

Safety and effectiveness in pediatric patients have not been established.

8.4 Geriatric Use

Elderly patients may benefit from a lower initial dose [see *Dosage and Administration* (2)].

8.5 Patients with Renal Impairment

The initial dosage should be based on the degree of impairment. Monitor patients carefully for hypotension and bradycardia, and titrate to higher doses cautiously. Only a minimal amount of clonidine is removed during routine hemodialysis.

10 OVERDOSAGE

Hypertension may develop early and may be followed by hypotension, bradycardia, respiratory depression, hypothermia, drowsiness, decreased or absent reflexes, weakness, irritability and miosis. The frequency of CNS depression may be higher in children than adults. Large overdoses may result in reversible cardiac conduction defects or dysrhythmias, apnea, coma, and seizures. Signs and symptoms of overdose generally occur within 30 minutes to two hours after exposure. As little as 0.1 mg of clonidine has produced signs of toxicity in children.

There is no specific antidote for clonidine overdose. Clonidine overdose may result in the rapid development of CNS depression; therefore, induction of vomiting with ipecac syrup is not recommended. Gastric lavage may be indicated following recent and/or large ingestions. Administration of activated charcoal and/or a cathartic may be beneficial. Supportive care may include atropine sulfate for bradycardia, intravenous fluids and/or vasopressor agents for hypotension and vasodilators for hypertension. Naloxone may be a useful adjunct for the management of clonidine-induced respiratory depression, hypotension and/or coma; blood pressure should be monitored since the administration of naloxone has occasionally resulted in paradoxical hypertension. Tolazoline administration has yielded inconsistent results and is not recommended as first-line therapy. Dialysis is not likely to significantly enhance the elimination of clonidine.

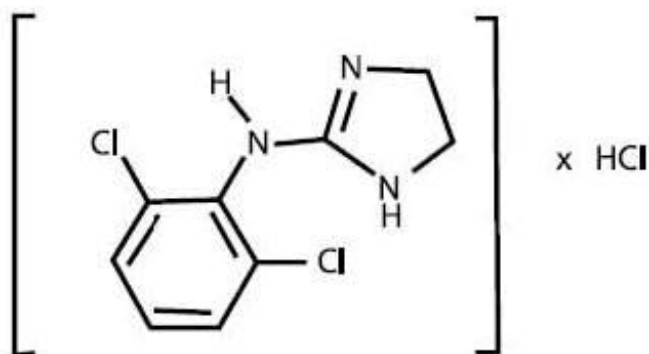
The largest overdose reported to date involved a 28-year old male who ingested 100 mg of clonidine hydrochloride powder. This patient developed hypertension followed by

hypotension, bradycardia, apnea, hallucinations, semicoma, and premature ventricular contractions. The patient fully recovered after intensive treatment. Plasma clonidine levels were 60 ng/mL after 1 hour, 190 ng/mL after 1.5 hours, 370 ng/mL after 2 hours, and 120 ng/mL after 5.5 and 6.5 hours. In mice and rats, the oral LD₅₀ of clonidine is 206 and 465 mg/kg, respectively.

11 DESCRIPTION

NEXICLON XR (clonidine) Extended-Release Tablets are available for oral administration in two dose strengths: 0.17 mg and 0.26 mg. The 0.17 mg and 0.26 mg tablets are equivalent to 0.2 mg and 0.3 mg of immediate-release clonidine hydrochloride, respectively.

Clonidine hydrochloride, a centrally active alpha-adrenergic agonist, is an imidazoline derivative and exists as a mesomeric compound. The chemical name is 2-(2,6-dichlorophenylamino)-2-imidazoline hydrochloride. The following is the structural formula:



C₉H₉Cl₂N₃·HCl Mol. Wt. 266.56

Clonidine hydrochloride is an odorless, bitter, white crystalline substance soluble in water and alcohol.

The inactive ingredients are: crospovidone, dental-type silica, lactose monohydrate, magnesium stearate, microcrystalline cellulose, polyvinyl acetate, povidone, sodium polystyrene sulfonate, triacetin. The 0.17 mg tablet also contains hypromellose, polyethylene glycol, and titanium dioxide. The 0.26 mg tablet also contains D&C yellow #10 aluminum lake, FD&C yellow #6 aluminum lake, fractionated coconut oil, maltodextrin, polydextrose, talc, and titanium dioxide.

12 CLINICAL PHARMACOLOGY

12.1 Mechanism of Action

Clonidine stimulates alpha-adrenoreceptors in the brain stem. This action results in reduced sympathetic outflow from the central nervous system and in decreases in peripheral resistance, renal vascular resistance, heart rate, and blood pressure. The

patient's maximum blood pressure decrease occurred within 6 to 8 hours. Renal blood flow and glomerular filtration rate remain essentially unchanged. Normal postural reflexes are intact; therefore, orthostatic symptoms are mild and infrequent.

12.2 Pharmacodynamics

NEXICLON XR was studied in an open-label crossover, force titration, partially randomized trial in patients with mild and moderate essential hypertension who were on two or fewer antihypertensive medications. The trial was designed to compare steady-state exposures between the NEXICLON XR and clonidine immediate-release tablets. There were up- and down-titration phases. There was no washout period between phases or treatments.

Studies with immediate-release clonidine hydrochloride have demonstrated a moderate reduction (15% to 20%) in cardiac output in the supine position with no change in the peripheral resistance. At a 45° tilt, there is a smaller reduction in cardiac output and a decrease of peripheral resistance. During long-term therapy, cardiac output tends to return to control values, while peripheral resistance remains decreased. Slowing of the pulse rate has been observed in most patients given clonidine, but the drug does not alter normal hemodynamic response to exercise.

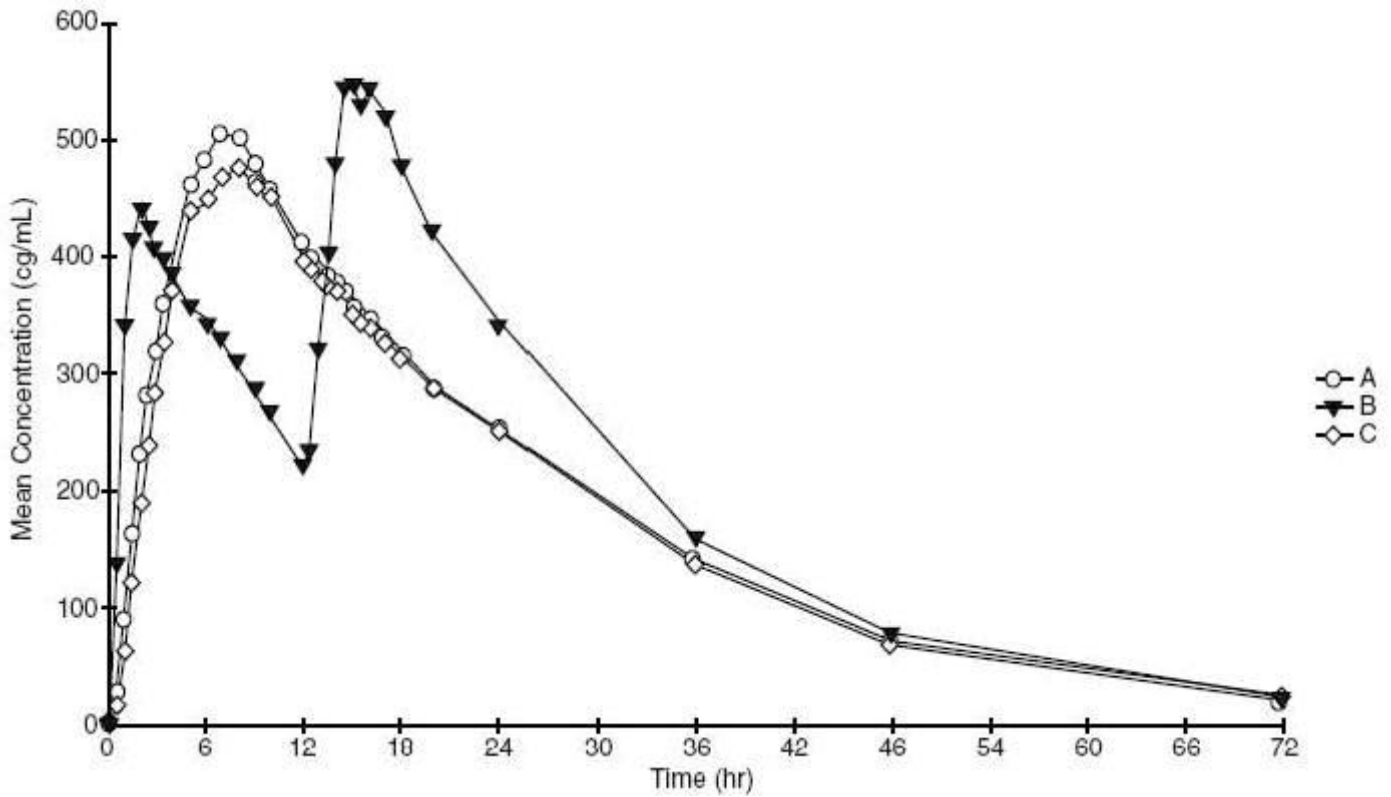
Tolerance to the antihypertensive effect may develop in some patients, necessitating a re-evaluation of therapy.

Other studies in patients have provided evidence of a reduction in plasma renin activity and in the excretion of aldosterone and catecholamines. The exact relationship of these pharmacologic actions to the antihypertensive effect of clonidine has not been fully elucidated.

Clonidine acutely stimulates growth hormone release in both children and adults, but does not produce a chronic elevation of growth hormone with long-term use.

12.3 Pharmacokinetics

Following single doses of NEXICLON XR 0.17 mg, clonidine mean (S.D.) peak plasma concentrations of 0.49 (\pm 0.09) ng/mL occurred at 7.8 (\pm 1.7) hours. The plasma half-life of clonidine was 13.7 (\pm 3.0) hours. There was no effect of food on the pharmacokinetic parameters.

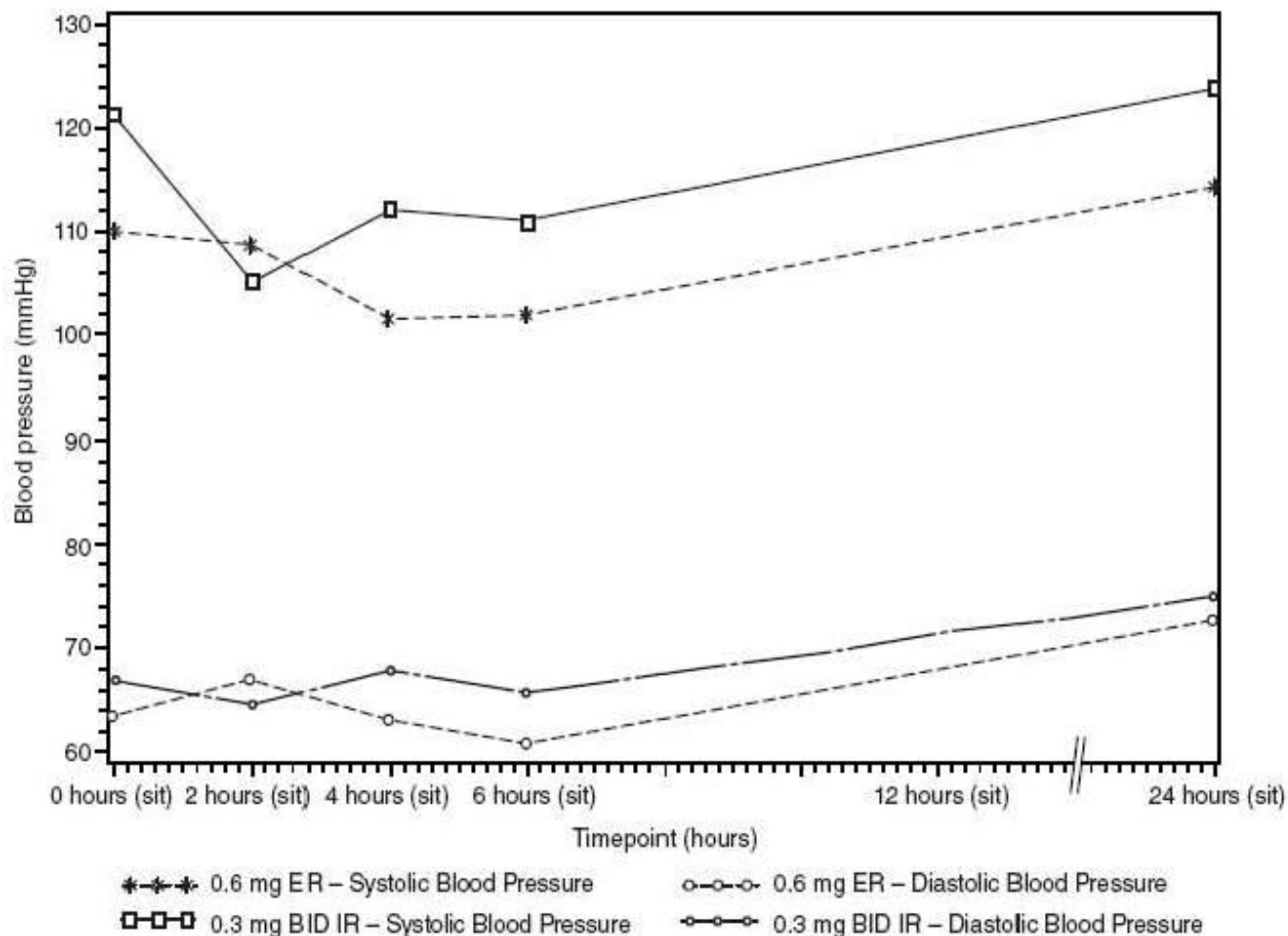


A = NEXICLON XR Tablets (0.17 mg QD) Fasted

B = Clonidine IR Tablet (0.1 mg clonidine hydrochloride Q12h) Fasted

C = NEXICLON XR Tablets (0.17 mg QD) Fed

In the multi-dose study, mild to moderate hypertensive patients were randomized to ER and BID IR clonidine formulations. The following plot shows the sitting blood pressure values for each treatment group at Day 22.



The half-life may increase up to 41 hours in patients with severe impairment of renal function. Following oral administration of clonidine about 40 to 60% of the absorbed dose is recovered in the urine as unchanged drug in 24 hours. About 50% of the absorbed dose is metabolized in the liver.

13 NONCLINICAL TOXICOLOGY

13.1 Carcinogenesis, Mutagenesis, Impairment of Fertility

Chronic dietary administration of clonidine was not carcinogenic to rats (132 weeks) or mice (78 weeks) dosed, respectively, at up to 46 or 70 times the maximum recommended daily human dose as mg/kg (9 or 6 times the MRDHD on a mg/m² basis). There was no evidence of genotoxicity in the Ames test for mutagenicity or mouse micronucleus test for clastogenicity.

Fertility of male or female rats was unaffected by clonidine doses as high as 150 mcg/kg (approximately 3 times MRDHD). In a separate experiment, fertility of female rats appeared to be affected at dose levels of 500 to 2000 mcg/kg (10 to 40 times the oral MRDHD on a mg/kg basis; 2 to 8 times the MRDHD on a mg/m² basis).

13.2 Animal Toxicology and/or Pharmacology

In several studies with oral clonidine hydrochloride, a dose-dependent increase in the

incidence and severity of spontaneous retinal degeneration was seen in albino rats treated for six months or longer. Tissue distribution studies in dogs and monkeys showed a concentration of clonidine in the choroid.

In view of the retinal degeneration seen in rats, eye examinations were performed during clinical trials in 908 patients before, and periodically after, the start of clonidine therapy. In 353 of these 908 patients, the eye examinations were carried out over periods of 24 months or longer. Except for some dryness of the eyes, no drug-related abnormal ophthalmological findings were recorded and, according to specialized tests such as electroretinography and macular dazzle, retinal function was unchanged.

In combination with amitriptyline, clonidine hydrochloride administration led to the development of corneal lesions in rats within 5 days.

14 CLINICAL STUDIES

[see *Clinical Pharmacology (12.3)*].

16 HOW SUPPLIED/STORAGE AND HANDLING

NEXICLON XR (clonidine) Extended-Release Tablets are scored, splitable, capsule-shaped coated tablets that are supplied in bottles of 30.

Strength	Color	Markings	NDC
0.17 mg	White	NP 2	71511-503-30

Store at 20° to 25°C (68° to 77°F); excursions permitted to 15° to 30°C (59° to 86°F). [See USP Controlled Room Temperature.]

Dispense in a tight, light-resistant container with a child-resistant closure.

17 PATIENT COUNSELING INFORMATION

Caution patients against interruption of NEXICLON XR therapy without their healthcare provider's advice.

Advise patients who engage in potentially hazardous activities, such as operating machinery or driving, of a possible sedative effect of clonidine. The sedative effect may be increased by concomitant use of alcohol, barbiturates, or other sedating drugs.

Manufactured for:

Athena Bioscience, LLC
Athens, GA 30601

By:

Tris Pharma, Inc.
Monmouth Junction, NJ 08852

08/2021

PACKAGE LABEL PRINCIPAL DISPLAY PANEL

NEXICLON XR® (Clonidine Extended-Release) Tablet

<p>Each tablet contains: 0.17 mg clonidine base equivalent to 0.2 mg clonidine hydrochloride.</p> <p>Dosage: Read accompanying prescribing information.</p> <p>Store at 20° to 25°C (68° to 77°F); excursions permitted to 15° to 30°C (59° to 86°F) [See USP Controlled Room Temperature].</p> <p>Dispense: in a tight, light-resistant container with a child-resistant closure.</p> <p>KEEP OUT OF THE REACH OF CHILDREN</p>	<p>NDC 71511-503-30</p> <p>NEXICLON™ XR (clonidine)</p> <p>Extended-Release Tablets</p> <p>0.17 mg</p> <p>Rx Only 30 Tablets</p>	<p>Manufactured for: Athena Bioscience, LLC Athens, GA 30601</p> <p>ATHENA BIOSCIENCE</p> <p>SP-LM-014 v. 00</p>	<p>LB8608 Rev 00 08/21 GTIN 00371511503305</p>
--	---	--	--

NEXICLON XR

clonidine tablet, extended release

Product Information

Product Type	HUMAN PRESCRIPTION DRUG	Item Code (Source)	NDC:71511-503
Route of Administration	ORAL		

Active Ingredient/Active Moiety

Ingredient Name	Basis of Strength	Strength
CLONIDINE (UNII: MN3L5RMN02) (CLONIDINE - UNII:MN3L5RMN02)	CLONIDINE	0.17 mg

Inactive Ingredients

Ingredient Name	Strength
CROSPVIDONE (UNII: 2S7830E561)	
SODIUM SILICATE (UNII: IJF18F77L3)	
LACTOSE MONOHYDRATE (UNII: EWQ57Q8I5X)	
MAGNESIUM STEARATE (UNII: 70097M6I30)	
CELLULOSE, MICROCRYSTALLINE (UNII: OP1R32D61U)	
VINYL ACETATE (UNII: L9MK238N77)	
POVIDONE (UNII: FZ989GH94E)	
SODIUM POLYSTYRENE SULFONATE (UNII: 1699G8679Z)	
TRIACETIN (UNII: XHX3C3X673)	
HYPROMELLOSE, UNSPECIFIED (UNII: 3NXW29V3WO)	
POLYETHYLENE GLYCOL 1000 (UNII: U076Q6Q621)	
TITANIUM DIOXIDE (UNII: 15FIX9V2JP)	

Product Characteristics

Color	white (white to off-white)	Score	2 pieces
Shape	OVAL (capsule shaped)	Size	13mm
Flavor		Imprint Code	NP2
Contains			

Packaging

#	Item Code	Package Description	Marketing Start Date	Marketing End Date
1	NDC:71511-503-30	30 in 1 BOTTLE, PLASTIC; Type 0: Not a Combination Product	03/01/2022	

Marketing Information

Marketing Category	Application Number or Monograph Citation	Marketing Start Date	Marketing End Date
NDA	NDA022500	03/01/2022	

Labeler - Athena Bioscience, LLC (080710928)

Revised: 3/2022

Athena Bioscience, LLC