

**NASAL ALLERGY RELIEF- cardiospermum halicacabum flowering top, galphimia glauca flowering top, luffa operculata fruit and schoenocaulon officinale seed spray  
Similasan AG**

*Disclaimer: This homeopathic product has not been evaluated by the Food and Drug Administration for safety or efficacy. FDA is not aware of scientific evidence to support homeopathy as effective.*

-----

**Nasal Allergy Relief**

***Drug Facts***

***Active ingredients***

Cardiospermum 6X

***Purpose***

itching, runny nose

***Active Ingredient***

Galphimia glauca 6X

***Purpose***

runny nose, watery eyes, sneezing

***Active Ingredient***

Luffa operculata 6X

***Purpose***

runny nose, sinus congestion

***Active Ingredient***

Sabadilla 6X

***Purpose***

sneezing, itching

**Uses\*:**

According to homeopathic principles, the active ingredients in this product temporarily relieve minor symptoms such as:

- allergies accompanied by runny nose, itching and/or burning of the nose, watery eyes, sneezing and swollen mucous membranes (congestion)
- post nasal drip caused by allergies
- sinus pressure caused by allergies

**Warnings:**

- According to homeopathic principles, symptoms may temporarily worsen before improving (Initial exacerbation of symptoms).
- Replace cap tightly after every use.
- To avoid contamination, do not touch the tip of the container to any surface besides nose.
- Discard open bottle after 6 months.
- The use of this container by more than one person may spread infection.

**If pregnant, trying to get pregnant or breast feeding,**

ask a health professional before use.

**Keep out of reach of children.**

If swallowed, get medical help or contact a Poison Control Center right away.

**Ask a doctor before use if you:**

- are susceptible to nose bleeds
- are prone to ear, nose or throat sensitivity

**Stop use and ask a doctor if:**

- symptoms worsen or persist for more than 72 hours

**Directions**

For adults and children ages 2 and over:

- Remove tamper-evident plastic seal from bottle
- Lift cap off bottle
- Spray 1-3 times into each nostril
- Use as needed
- Replace cap after use

**Other information:**

Active ingredients are manufactured according to homeopathic principles.

**Inactive Ingredients:**

Purified water, Sodium chloride

***Questions?***

Reach our representatives at **1-800-240-9780** or [getinfo@similasanusa.com](mailto:getinfo@similasanusa.com).  
**[www.SimilasanUSA.com](http://www.SimilasanUSA.com)**

**PRINCIPAL DISPLAY PANEL**

**Similisan**  
**Nasal Allergy Relief**  
**NASAL MIST**  
**PRESERVATIVE FREE**  
**20 ml / 0.68 fl oz**

NATURAL ACTIVE INGREDIENTS

Nasal Allergy Relief™

Similasan

**Drug Facts**

**Active Ingredients .... Purpose**

Cardiospermum 6X ..... itching, runny nose  
Galphimia glauca 6X ..... runny nose, watery eyes, sneezing  
Luffa operculata 6X ..... runny nose, sinus congestion  
Sabadilla 6X ..... sneezing, itching

**Uses\***

According to homeopathic principles, the active ingredients in this product temporarily relieve minor symptoms such as:  
• Allergies accompanied by runny nose, itching and/or burning of the nose, watery eyes, sneezing and swollen mucous membranes (congestion)  
• post nasal drip caused by allergies  
• sinus pressure caused by allergies

**Warnings**

• According to homeopathic principles, symptoms may temporarily worsen before improving (initial exacerbation of symptoms).  
• Replace cap tightly after every use.  
• To avoid contamination, do not touch the tip of the container to any surface besides nose.  
• Discard open bottle after 6 months.  
• The use of this container by more than one person may spread infection.

**pregnant, trying to get pregnant or breast feeding,** ask a health professional before use.

**Keep out of reach of children.** If swallowed, get medical help or contact a Poison Control Center right away.

**Ask a doctor before use if you:**  
• are susceptible to nose bleeds  
• are prone to ear, nose or throat sensitivity

**Drug Facts (continued)**

**Stop use and ask a doctor if:**  
• symptoms worsen or persist for more than 72 hours

**Directions**

For adults and children ages 2 and over:  
• Remove tamper-evident plastic seal from bottle  
• Lift cap off bottle  
• Spray 1-3 times into each nostril  
• Use as needed  
• Replace cap after use



**Other information**

Active ingredients are manufactured according to homeopathic principles.

**Inactive Ingredients**

Purified water, Sodium chloride

**Questions?**

Reach our representatives at  
**1-800-240-9780** or  
getinfo@similasanusa.com  
[www.SimilasanUSA.com](http://www.SimilasanUSA.com)

For your protection do not use if tamper evident seal around neck of bottle is missing or broken.



Similasan

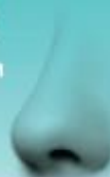
Nasal Allergy Relief™

NASAL MIST

PRESERVATIVE FREE

MULTI-SYMP TOM ALLERGY RELIEF

- Sinus Congestion
- Itching
- Runny Nose
- Sneezing



NATURAL ACTIVE INGREDIENTS

**ES**  
Español

**Alivio de la Alergia Nasal**  
*Nebulización Nasal*

**LIBRE DE PRESERVATIVOS**  
**INGREDIENTES ACTIVOS NATURALES**

**ALIVIO DE MÚLTIPLES SÍNTOMAS DE LA ALERGI A**

- Congestión en los senos nasales
- Picazón
- Escorrimiento nasal
- Estornudos

Instrucciones en español adentro

Similasan, trusted for over 40 years in Switzerland, No Harsh Chemicals

Similasan and Similasan Nasal Allergy Relief are trademarks of T&S Eye Care Management AG, Switzerland, and the Similasan logo is a registered trademark of T&S Eye Care Management AG, Switzerland. Manufactured by: Similasan AG, Pflanz-Jonen, Switzerland. Imported and Distributed by: Similasan Corporation, Highlands Ranch, CO 80129. Made in Switzerland

[www.SimilasanUSA.com](http://www.SimilasanUSA.com)

\*Claims based on traditional homeopathic practice, not accepted medical evidence. Not FDA evaluated.

Feel Good About Feeling Better™

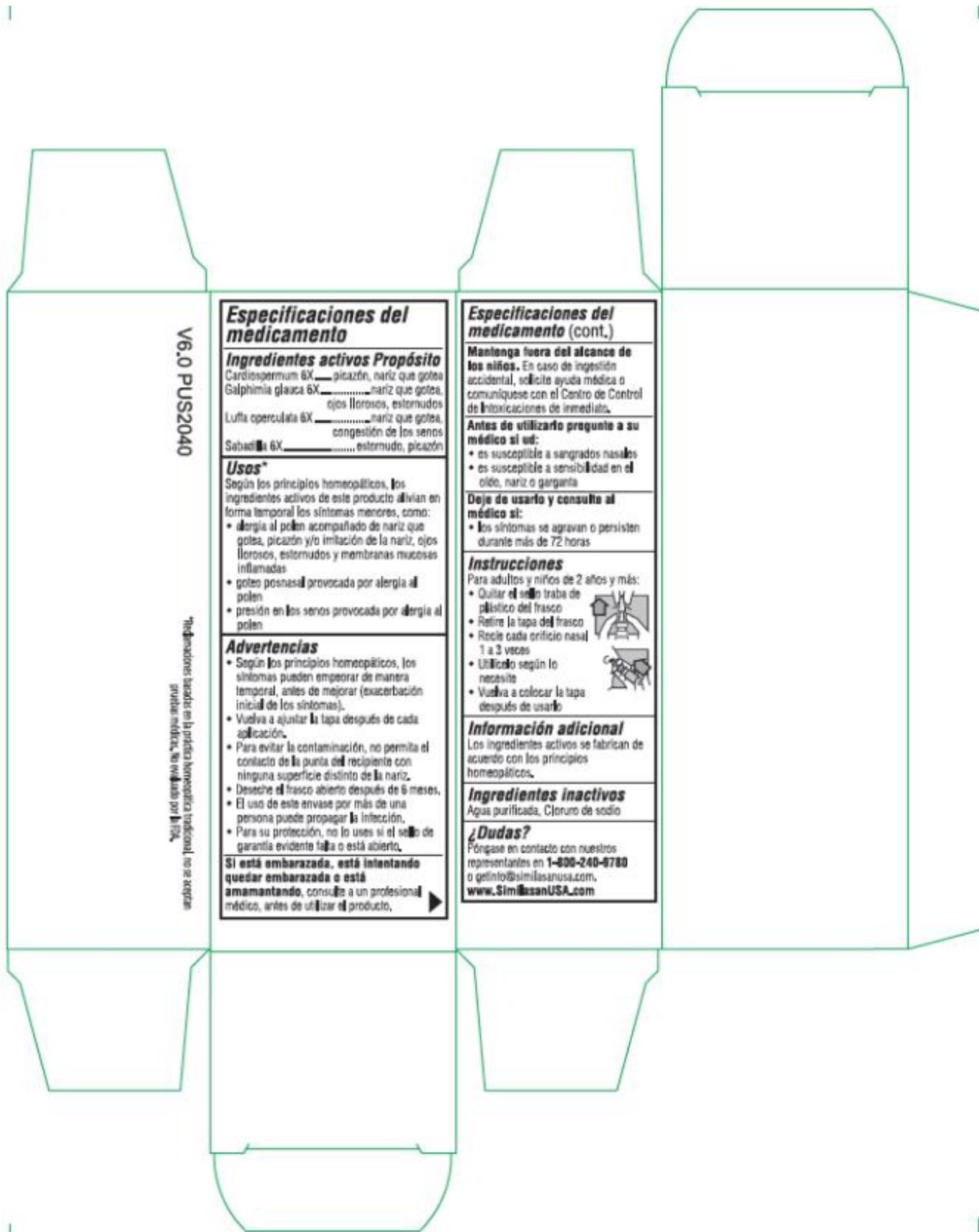
HOMEOPATHIC Original Swiss Formula  
20 ml / 0.68 fl oz



unprinted/uncoated area  
Farb/Lackausparung

Space (at minimum 7m  
EXP. and batch  
YY.YYYY YYYY

VS 0 BUS 2040



V6.0 PUS2040

Preparaciones basadas en la medicina homeopática tradicional, no se requieren pruebas médicas, no evaluado por la FDA.

**Especificaciones del medicamento**

**Ingredientes activos Propósito**

Cardiospermum 6X..... picazón, nariz que gotea  
 Galphimia glauca 6X..... nariz que gotea,  
 ojos llorosos, estornudos  
 Luffa operculata 6X..... nariz que gotea,  
 congestión de los senos  
 Sabadilla 6X..... estornudo, picazón

**Usos\***

Según los principios homeopáticos, los ingredientes activos de este producto alivian en forma temporal los síntomas menores, como:

- **alergia al polen** acompañado de nariz que gotea, picazón y/o irritación de la nariz, ojos llorosos, estornudos y membranas mucosas inflamadas
- **goteo posnasal** provocada por alergia al polen
- **presión en los senos** provocada por alergia al polen

**Advertencias**

- Según los principios homeopáticos, los síntomas pueden empeorar de manera temporal, antes de mejorar (exacerbación inicial de los síntomas).
- Vuelva a ajustar la tapa después de cada aplicación.
- Para evitar la contaminación, no permita el contacto de la punta del recipiente con ninguna superficie distinto de la nariz.
- Deseche el frasco abierto después de 6 meses.
- El uso de este envase por más de una persona puede propagar la infección.
- Para su protección, no lo uses si el sello de garantía evidente falta o está abierto.

**Si está embarazada, está intentando quedar embarazada o está amamantando, consulte a un profesional médico, antes de utilizar el producto.**

**Especificaciones del medicamento (cont.)**

**Mantenga fuera del alcance de los niños.** En caso de ingestión accidental, solicite ayuda médica o comuníquese con el Centro de Control de Intoxicaciones de inmediato.

**Antes de utilizarlo pregunte a su médico si ud:**

- es susceptible a sangrados nasales
- es susceptible a sensibilidad en el oído, nariz o garganta

**Deje de usarlo y consulte al médico si:**

- los síntomas se agravan o persisten durante más de 72 horas

**Instrucciones**

Para adultos y niños de 2 años y más:

- Quitar el **sello** trabe de plástico del frasco
- Retire la tapa del frasco
- Recle cada orificio nasal 1 a 3 veces
- **Utilícelo** según lo necesite
- **Vuelva** a colocar la tapa después de usarlo



**Información adicional**

Los ingredientes activos se fabrican de acuerdo con los principios homeopáticos.

**Ingredientes inactivos**

Agua purificada, Cloruro de sodio

**¿Dudas?**

Póngase en contacto con nuestros representantes en 1-800-240-6780 o [gelinfo@similasanusa.com](mailto:gelinfo@similasanusa.com), [www.SimilasanUSA.com](http://www.SimilasanUSA.com)

**NASAL ALLERGY RELIEF**

cardiospermum halicacabum flowering top, galphimia glauca flowering top, luffa operculata fruit and schoenocaulon officinale seed spray

**Product Information**

<b>Product Type</b>	HUMAN OTC DRUG	<b>Item Code (Source)</b>	NDC:53799-241
<b>Route of Administration</b>	NASAL		

**Active Ingredient/Active Moiety**

<b>Ingredient Name</b>	<b>Basis of Strength</b>	<b>Strength</b>
<b>CARDIOSPERMUM HALICACABUM FLOWERING TOP</b> (UNII: MZP2508BRR) (CARDIOSPERMUM HALICACABUM FLOWERING TOP - UNII:MZP2508BRR)	CARDIOSPERMUM HALICACABUM FLOWERING TOP	6 [hp_X] in 20 mL
<b>GALPHIMIA GLAUCA FLOWERING TOP</b> (UNII: 93PH5Q8M7E) (GALPHIMIA GLAUCA FLOWERING TOP - UNII:93PH5Q8M7E)	GALPHIMIA GLAUCA FLOWERING TOP	6 [hp_X] in 20 mL
<b>LUFFA OPERCULATA FRUIT</b> (UNII: C4MO6809HU) (LUFFA OPERCULATA FRUIT - UNII:C4MO6809HU)	LUFFA OPERCULATA FRUIT	6 [hp_X] in 20 mL
<b>SCHOENOCAULON OFFICINALE SEED</b> (UNII: 6NAF1689IO) (SCHOENOCAULON OFFICINALE SEED - UNII:6NAF1689IO)	SCHOENOCAULON OFFICINALE SEED	6 [hp_X] in 20 mL

**Inactive Ingredients**

<b>Ingredient Name</b>	<b>Strength</b>
<b>WATER</b> (UNII: 059QF0KO0R)	
<b>SODIUM CHLORIDE</b> (UNII: 451W47IQ8X)	

**Packaging**

<b>#</b>	<b>Item Code</b>	<b>Package Description</b>	<b>Marketing Start Date</b>	<b>Marketing End Date</b>
1	NDC:53799-241-20	20 mL in 1 BOTTLE, SPRAY; Type 2: Prefilled Drug Delivery Device/System (syringe, patch, etc.)	04/26/2021	

**Marketing Information**

<b>Marketing Category</b>	<b>Application Number or Monograph Citation</b>	<b>Marketing Start Date</b>	<b>Marketing End Date</b>
unapproved homeopathic		04/26/2021	

**Labeler** - Similasan AG (481545754)

Revised: 11/2021

Similasan AG