

DOXORUBICIN HYDROCHLORIDE- doxorubicin injection, powder, lyophilized, for solution
Amneal Pharmaceuticals LLC

HIGHLIGHTS OF PRESCRIBING INFORMATION

These highlights do not include all the information needed to use DOXORUBICIN HYDROCHLORIDE FOR INJECTION safely and effectively. See full prescribing information for DOXORUBICIN HYDROCHLORIDE FOR INJECTION.

DOXORUBICIN HYDROCHLORIDE for injection, for intravenous use
Initial U.S. Approval: 1974

WARNING: CARDIOMYOPATHY, SECONDARY MALIGNANCIES, EXTRAVASATION AND TISSUE NECROSIS, and SEVERE MYELOSUPPRESSION

See full prescribing information for complete boxed warning.

- **Cardiomyopathy:** Myocardial damage can occur with doxorubicin hydrochloride with incidences from 1% to 20% for cumulative doses from 300 mg/m² to 500 mg/m² when doxorubicin hydrochloride is administered every 3 weeks. The risk of cardiomyopathy is further increased with concomitant cardiotoxic therapy. Assess left ventricular ejection fraction (LVEF) before and regularly during and after treatment with doxorubicin hydrochloride. (5.1)
- **Secondary Malignancies:** Secondary acute myelogenous leukemia (AML) and myelodysplastic syndrome (MDS) occur at a higher incidence in patients treated with anthracyclines, including doxorubicin hydrochloride. (5.2)
- **Extravasation and Tissue Necrosis:** Extravasation of doxorubicin hydrochloride can result in severe local tissue injury and necrosis requiring wide excision and skin grafting. Immediately terminate the drug, and apply ice to the affected area. (5.3)
- **Severe myelosuppression resulting in serious infection, septic shock, requirement for transfusions, hospitalization, and death may occur.** (5.4)

----- **INDICATIONS AND USAGE** -----

Doxorubicin hydrochloride for injection is an anthracycline topoisomerase inhibitor indicated:

- as a component of multiagent adjuvant chemotherapy for treatment of women with axillary lymph node involvement following resection of primary breast cancer (1.1).
- for the treatment of: acute lymphoblastic leukemia, acute myeloblastic leukemia, Hodgkin lymphoma, Non-Hodgkin lymphoma, metastatic breast cancer, metastatic Wilms' tumor, metastatic neuroblastoma, metastatic soft tissue sarcoma, metastatic bone sarcomas, metastatic ovarian carcinoma, metastatic transitional cell bladder carcinoma, metastatic thyroid carcinoma, metastatic gastric carcinoma, metastatic bronchogenic carcinoma (1.2).

----- **DOSAGE AND ADMINISTRATION** -----

- Single agent: 60 to 75 mg/m² given intravenously every 21 days (2.1).
- In combination: 40 to 75 mg/m² given intravenously every 21 to 28 days (2.1).
- Discontinue doxorubicin hydrochloride for injection in patients who develop signs or symptoms of cardiomyopathy (2.2).
- Reduce dose in patients with hepatic impairment (2.3).

----- **DOSAGE FORMS AND STRENGTHS** -----

Doxorubicin Hydrochloride for Injection:

- 20 mg/vial and 50 mg/vial as a lyophilized powder (3).

----- **CONTRAINDICATIONS** -----

- Severe myocardial insufficiency (4).
- Recent myocardial infarction (4).
- Severe persistent drug-induced myelosuppression (4).
- Severe hepatic impairment (4).
- Severe hypersensitivity to doxorubicin hydrochloride (4).

-----WARNINGS AND PRECAUTIONS-----

- Radiation-Induced Toxicity: Can be increased by the administration of doxorubicin hydrochloride for injection. Radiation recall can occur in patients who receive doxorubicin hydrochloride for injection after prior radiation therapy (5.7).
- Embryo-Fetal Toxicity: Can cause fetal harm. Advise females of reproductive potential of the potential risk to a fetus and on the use of effective contraception. Advise males with female partners of reproductive potential to use effective contraception. Advise males with pregnant partners to use condoms (5.8, 8.1, 8.3).

-----ADVERSE REACTIONS-----

The most common (>10%) adverse reactions are alopecia, nausea and vomiting (6.1).

To report SUSPECTED ADVERSE REACTIONS, contact Amneal Pharmaceuticals at 1-877-835-5472 or FDA at 1-800-FDA-1088 or www.fda.gov/medwatch.

-----DRUG INTERACTIONS-----

- Avoid concomitant use of doxorubicin hydrochloride with inhibitors and inducers of CYP3A4, CYP2D6, and/or P-gp (7.1).
- Do not administer doxorubicin hydrochloride in combination with trastuzumab due to increased risk of cardiac dysfunction (5.1, 7.2).

-----USE IN SPECIFIC POPULATIONS-----

- Lactation: Advise not to breastfeed (8.2).
- Females and Males of Reproductive Potential: May impair fertility (8.3).

See 17 for PATIENT COUNSELING INFORMATION and FDA-approved patient labeling.

Revised: 2/2021

FULL PRESCRIBING INFORMATION: CONTENTS*

WARNING: CARDIOMYOPATHY, SECONDARY MALIGNANCIES, EXTRAVASATION AND TISSUE NECROSIS, and SEVERE MYELOSUPPRESSION

1 INDICATIONS AND USAGE

- 1.1 Adjuvant Breast Cancer
- 1.2 Other Cancers

2 DOSAGE AND ADMINISTRATION

- 2.1 Recommended Dosage for Adjuvant Breast Cancer
- 2.2 Recommended Dosage for Other Cancers
- 2.3 Dosage Modifications for Adverse Reactions
- 2.4 Dosage Modifications for Hepatic Impairment
- 2.5 Preparation and Administration

3 DOSAGE FORMS AND STRENGTHS

4 CONTRAINDICATIONS

5 WARNINGS AND PRECAUTIONS

- 5.1 Cardiomyopathy and Arrhythmias
- 5.2 Secondary Malignancies
- 5.3 Extravasation and Tissue Necrosis
- 5.4 Severe Myelosuppression
- 5.5 Use in Patients with Hepatic Impairment
- 5.6 Tumor Lysis Syndrome
- 5.7 Potentiation of Radiation Toxicity and Radiation Recall

5.8 Embryo-Fetal Toxicity

6 ADVERSE REACTIONS

6.1 Clinical Trials Experience

6.2 Postmarketing Experience

7 DRUG INTERACTIONS

7.1 Effect of Other Drugs on Doxorubicin Hydrochloride for Injection

7.2 Concomitant Use of Trastuzumab

7.3 Concomitant Use of Dexrazoxane

7.4 Concomitant Use of 6-Mercaptopurine

8 USE IN SPECIFIC POPULATIONS

8.1 Pregnancy

8.2 Lactation

8.3 Females and Males of Reproductive Potential

8.4 Pediatric Use

8.5 Geriatric Use

8.6 Hepatic Impairment

10 OVERDOSAGE

11 DESCRIPTION

12 CLINICAL PHARMACOLOGY

12.1 Mechanism of Action

12.3 Pharmacokinetics

13 NONCLINICAL TOXICOLOGY

13.1 Carcinogenesis, Mutagenesis, Impairment of Fertility

14 CLINICAL STUDIES

14.1 Adjuvant Breast Cancer

15 REFERENCES

16 HOW SUPPLIED/STORAGE AND HANDLING

17 PATIENT COUNSELING INFORMATION

* Sections or subsections omitted from the full prescribing information are not listed.

FULL PRESCRIBING INFORMATION

**WARNING: CARDIOMYOPATHY, SECONDARY MALIGNANCIES,
EXTRAVASATION AND TISSUE NECROSIS, and SEVERE
MYELOSUPPRESSION**

- **Cardiomyopathy:** Myocardial damage, including acute left ventricular failure, can occur with doxorubicin hydrochloride. The risk of cardiomyopathy is proportional to the cumulative exposure with incidence rates from 1% to 20% for cumulative doses ranging from 300 mg/m² to 500 mg/m² when doxorubicin hydrochloride is administered every 3 weeks. The risk of cardiomyopathy is further increased with concomitant cardiotoxic therapy. Assess left ventricular ejection fraction (LVEF) before and regularly during and after treatment with doxorubicin hydrochloride [*see Warnings and Precautions (5.1)*].
- **Secondary Malignancies:** Secondary acute myelogenous leukemia (AML) and myelodysplastic syndrome (MDS) occur at a higher incidence in patients treated with anthracyclines, including doxorubicin hydrochloride [*see Warnings and Precautions (5.2)*].
- **Extravasation and Tissue Necrosis:** Extravasation of doxorubicin hydrochloride can result in severe local tissue injury and necrosis requiring wide excision of the affected area and skin grafting. Immediately terminate the drug and apply ice to the affected area [*see Warnings and Precautions (5.3)*].
- **Severe myelosuppression** resulting in serious infection, septic shock, requirement for transfusions, hospitalization, and death may occur [*see Warnings and Precautions (5.4)*].

1 INDICATIONS AND USAGE

1.1 Adjuvant Breast Cancer

Doxorubicin hydrochloride for injection is indicated as a component of multi-agent adjuvant chemotherapy for treatment of women with axillary lymph node involvement following resection of primary breast cancer.

1.2 Other Cancers

Doxorubicin hydrochloride for injection is indicated for the treatment of

- acute lymphoblastic leukemia
- acute myeloblastic leukemia
- Hodgkin lymphoma
- non-Hodgkin lymphoma (NHL)
- metastatic breast cancer
- metastatic Wilms' tumor
- metastatic neuroblastoma
- metastatic soft tissue sarcoma
- metastatic bone sarcoma
- metastatic ovarian carcinoma
- metastatic transitional cell bladder carcinoma

- metastatic thyroid carcinoma
- metastatic gastric carcinoma
- metastatic bronchogenic carcinoma

2 DOSAGE AND ADMINISTRATION

2.1 Recommended Dosage for Adjuvant Breast Cancer

The recommended dosage of doxorubicin hydrochloride for injection is 60 mg/m² administered as an intravenous bolus on day 1 of each 21-day treatment cycle, in combination with cyclophosphamide, for a total of four cycles.

2.2 Recommended Dosage for Other Cancers

- The recommended dosage of doxorubicin hydrochloride for injection when used as a single agent is 60 mg/m² to 75 mg/m² intravenously every 21 days.
- The recommended dosage of doxorubicin hydrochloride for injection, when administered in combination with other chemotherapy drugs, is 40 mg/m² to 75 mg/m² intravenously every 21 to 28 days.
- Consider use of the lower doxorubicin hydrochloride for injection dose in the recommended dosage range or longer intervals between cycles for heavily pretreated patients, elderly patients, or obese patients.
- Cumulative doses above 550 mg/m² are associated with an increased risk of cardiomyopathy [see *Warnings and Precautions* (5.1)].

2.3 Dosage Modifications for Adverse Reactions

Cardiomyopathy

Discontinue doxorubicin hydrochloride for injection in patients who develop signs or symptoms of cardiomyopathy [see *Warnings and Precautions* (5.1)].

2.4 Dosage Modifications for Hepatic Impairment

Doxorubicin hydrochloride for injection is contraindicated in patients with severe hepatic impairment (Child-Pugh Class C or serum bilirubin greater than 5 mg/dL) [see *Contraindications* (4)].

Dosage modifications for doxorubicin hydrochloride for injection in patients with elevated serum total bilirubin concentrations [see *Warnings and Precautions* (5.5), *Use in Specific Populations* (8.6)] are provided in Table 1.

Table 1. Recommended Dosage Modification for Elevated Serum Total Bilirubin

Serum total bilirubin concentration	Dosage Modification
1.2 to 3 mg/dL	50%
3.1 to 5 mg/dL	75%
greater than 5 mg/dL	Do not initiate doxorubicin hydrochloride for injection; discontinue doxorubicin hydrochloride for injection

2.5 Preparation and Administration

Doxorubicin hydrochloride for injection is a cytotoxic drug. Follow applicable special handling and disposal procedures.¹

Preparation

Reconstitution of Doxorubicin Hydrochloride for Injection

- Reconstitute doxorubicin hydrochloride for injection with 0.9% Sodium Chloride Injection to obtain a final concentration of 2 mg per mL as follows:
 - 10 mL 0.9% Sodium Chloride Injection, USP to reconstitute 20 mg vial
 - 25 mL 0.9% Sodium Chloride Injection, USP to reconstitute 50 mg vial
- Gently shake vial until the contents have dissolved.
- Protect reconstituted solution from light.

Dilution of Reconstituted Doxorubicin Hydrochloride for Injection

- Dilute reconstituted doxorubicin hydrochloride for injection in 0.9% Sodium Chloride Injection, USP or 5% Dextrose Injection, USP.
- Protect from light following preparation until completion of infusion.
- Use within 1 hour. If not used within 1 hour, discard the diluted product.

Administration

- Visually inspect for particulate matter and discoloration prior to administration, whenever solution and container permit. Discard if the solution is discolored, cloudy, or contains particulate matter.

Administration by Intravenous Injection

- Administer diluted reconstituted doxorubicin hydrochloride for injection as an intravenous injection through a central intravenous line or a secure and free-flowing peripheral venous line containing 0.9% Sodium Chloride Injection, USP, 0.45% Sodium Chloride Injection, USP, or 5% Dextrose Injection, USP.
- Administer intravenously over 3 to 10 minutes. Decrease the rate of infusion if erythematous streaking along the vein proximal to the site of infusion or facial flushing occur.

Administration by Continuous Intravenous Infusion

- Administer diluted reconstituted doxorubicin hydrochloride for injection solution only through a central intravenous line. Decrease the rate of infusion if erythematous streaking along the vein proximal to the site of infusion or facial flushing occur.
- Protect from light from preparation for infusion until completion of infusion.

Management of Suspected Extravasation

Immediately discontinue doxorubicin hydrochloride for injection for burning or stinging sensation or other evidence indicating peri-venous infiltration or extravasation. Manage confirmed or suspected extravasation as follows:

- Do not remove the needle until attempts are made to aspirate extravasated fluid.
- Do not flush the line.
- Avoid applying pressure to the site.

- Apply ice to the site intermittently for 15 minutes, 4 times a day for 3 days.
- If the extravasation is in an extremity, elevate the extremity.
- In adults, consider administration of dexrazoxane [see *Warnings and Precautions* (5.3)].

Management of Contact with Skin or Eyes

Treat accidental contact with the skin or eyes immediately by copious lavage with water, or soap and water, or sodium bicarbonate solution. Do not abrade the skin by using a scrub brush. Seek medical attention.

Incompatibility with Other Drugs

Do not admix doxorubicin hydrochloride for injection with other drugs. If doxorubicin hydrochloride for injection is mixed with heparin or fluorouracil, a precipitate may form. Avoid contact with alkaline solutions which can lead to hydrolysis of doxorubicin hydrochloride.

3 DOSAGE FORMS AND STRENGTHS

- Doxorubicin Hydrochloride for Injection, USP: Vials contain 20 mg and 50 mg doxorubicin hydrochloride, USP as a red to orange red lyophilized cake or powder.

4 CONTRAINDICATIONS

Doxorubicin hydrochloride for injection is contraindicated in patients with:

- Severe myocardial insufficiency [see *Warnings and Precautions* (5.1)]
- Recent (occurring within the past 4 to 6 weeks) myocardial infarction [see *Warnings and Precautions* (5.1)]
- Severe persistent drug-induced myelosuppression [see *Warnings and Precautions* (5.4)]
- Severe hepatic impairment (defined as Child Pugh Class C or serum bilirubin level greater than 5 mg/dL) [see *Warnings and Precautions* (5.5)]
- Severe hypersensitivity reaction to doxorubicin hydrochloride, including anaphylaxis [see *Adverse Reactions* (6.2)]

5 WARNINGS AND PRECAUTIONS

5.1 Cardiomyopathy and Arrhythmias

Cardiomyopathy

Doxorubicin hydrochloride can result in myocardial damage, including acute left ventricular failure. The risk of cardiomyopathy is generally proportional to the cumulative exposure. Include prior doses of other anthracyclines or anthracenediones in calculations of total cumulative dosage for doxorubicin hydrochloride. Cardiomyopathy may develop during treatment or up to several years after completion of treatment and can include decrease in LVEF and signs and symptoms of congestive heart failure (CHF). The probability of developing cardiomyopathy is estimated to be 1% to 2% at a total cumulative dose of 300 mg/m² of doxorubicin hydrochloride, 3% to 5% at a dose of 400 mg/m², 5% to 8% at a dose of 450 mg/m², and 6% to 20% at a dose of 500 mg/m²,

when doxorubicin hydrochloride is administered every 3 weeks. There is an additive or potentially synergistic increase in the risk of cardiomyopathy in patients who have received radiotherapy to the mediastinum or concomitant therapy with other known cardiotoxic agents, such as cyclophosphamide and trastuzumab.

Pericarditis and myocarditis have also been reported during or following doxorubicin hydrochloride treatment.

Assess left ventricular cardiac function (e.g., MUGA or echocardiogram) prior to initiation of doxorubicin hydrochloride for injection, during treatment to detect acute changes, and after treatment to detect delayed cardiotoxicity. Increase the frequency of assessments as the cumulative dose exceeds 300 mg/m². Use the same method of assessment of LVEF at all time points [see *Use in Specific Populations* (8.4)]. Discontinue doxorubicin hydrochloride for injection in patients who develop signs or symptoms of cardiomyopathy [see *Dosage and Administration* (2.3)].

Consider the use of dexrazoxane to reduce the incidence and severity of cardiomyopathy due to doxorubicin hydrochloride administration in patients who have received a cumulative doxorubicin hydrochloride dose of 300 mg/m² and who will continue to receive doxorubicin hydrochloride.

Arrhythmias

Doxorubicin hydrochloride can result in arrhythmias, including life-threatening arrhythmias, during or within a few hours after doxorubicin hydrochloride administration and at any time point during treatment. Tachyarrhythmias, including sinus tachycardia, premature ventricular contractions, and ventricular tachycardia, as well as bradycardia, can occur. Electrocardiographic changes, including non-specific ST-T wave changes, atrioventricular and bundle-branch block can also occur. These electrocardiographic changes may be transient and self-limited and may not require a dosage modification of doxorubicin hydrochloride.

5.2 Secondary Malignancies

The risk of developing secondary acute myelogenous leukemia (AML) and myelodysplastic syndrome (MDS) is increased following treatment with doxorubicin hydrochloride. Cumulative incidences ranged from 0.2% at five years to 1.5% at 10 years in two separate trials involving the adjuvant treatment of women with breast cancer. These leukemias generally occur within 1 to 3 years of treatment.

5.3 Extravasation and Tissue Necrosis

Extravasation of doxorubicin hydrochloride can cause severe local tissue injury manifesting as blistering, ulceration, and necrosis requiring wide excision of the affected area and skin grafting. Extravasation should be considered if a patient experiences a burning or stinging sensation or shows other evidence indicating peri-venous infiltration or extravasation; however, extravasation may be present in patients who do not experience a stinging or burning sensation or when blood return is present on aspiration of the infusion needle.

When given via a peripheral venous line, infuse doxorubicin hydrochloride for injection over 10 minutes or less to minimize the risk of thrombosis or perivenous extravasation.

If extravasation is suspected, immediately discontinue the intravenous injection or

continuous intravenous infusion [see *Dosage and Administration* (2.5)]. Apply ice to the site intermittently for 15 minutes, 4 times a day for 3 days. In adults, if appropriate, administer dexrazoxane at the site of extravasation as soon as possible and within the first 6 hours after extravasation.

5.4 Severe Myelosuppression

Doxorubicin hydrochloride can cause myelosuppression. In Study 1, the incidence of severe myelosuppression was: grade 4 leukopenia (0.3%), grade 3 leukopenia (3%), and grade 4 thrombocytopenia (0.1%). A dose-dependent, reversible neutropenia is the predominant manifestation of myelosuppression from doxorubicin hydrochloride. When doxorubicin hydrochloride is administered every 21 days, the neutrophil count reaches its nadir 10 to 14 days after administration with recovery usually occurring by day 21.

Obtain complete blood counts prior to each treatment and carefully monitor patients during treatment for possible clinical complications due to myelosuppression. Delay next dose of doxorubicin hydrochloride for injection if severe myelosuppression has not improved. Consider dose reduction for patients with prolonged myelosuppression based on severity of reaction.

5.5 Use in Patients with Hepatic Impairment

The clearance of doxorubicin is decreased in patients with elevated serum bilirubin with an increased risk of toxicity [see *Use in Specific Populations* (8.6), *Clinical Pharmacology* (12.3)]. Doxorubicin hydrochloride for injection is contraindicated in patients with severe hepatic impairment (defined as Child Pugh Class C or serum bilirubin level greater than 5 mg/dL) [see *Contraindications* (4)]. Reduce the dose of doxorubicin hydrochloride for injection in patients with serum bilirubin levels of 1.2 to 5 mg/dL [see *Dosage and Administration* (2.4)]. Obtain liver tests including ALT, AST, alkaline phosphatase, and bilirubin prior to and during therapy.

5.6 Tumor Lysis Syndrome

Doxorubicin hydrochloride can induce tumor lysis syndrome in patients with rapidly growing tumors. Evaluate blood uric acid levels, potassium, calcium, phosphate, and creatinine after initial treatment. Hydration, urine alkalinization, and prophylaxis with allopurinol to prevent hyperuricemia may minimize potential complications of tumor lysis syndrome.

5.7 Potentiation of Radiation Toxicity and Radiation Recall

Doxorubicin hydrochloride can increase radiation-induced toxicity to the myocardium, mucosa, skin, and liver. Radiation recall, including but not limited to cutaneous and pulmonary toxicity, can occur in patients who receive doxorubicin hydrochloride after prior radiation therapy.

5.8 Embryo-Fetal Toxicity

Based on findings in animals and its mechanism of action, doxorubicin hydrochloride for injection can cause fetal harm when administered to a pregnant woman; avoid the use of doxorubicin hydrochloride for injection during the 1st trimester. Available human data do not establish the presence or absence of major birth defects and miscarriage related to the use of doxorubicin hydrochloride during the 2nd and 3rd trimesters. Doxorubicin

hydrochloride was teratogenic and embryotoxic in rats and rabbits at doses lower than the recommended human dose. Advise pregnant women of the potential risk to a fetus. Advise females of reproductive potential to use effective contraception during treatment with doxorubicin hydrochloride for injection and for 6 months after treatment. Advise males with female partners of reproductive potential to use effective contraception during treatment with doxorubicin hydrochloride for injection and for 3 months after treatment. Advise males with pregnant partners to use condoms during treatment with doxorubicin hydrochloride for injection and for at least 10 days after the final dose [see *Use in Specific Populations (8.1, 8.3), Nonclinical Toxicology (13.1)*].

6 ADVERSE REACTIONS

The following clinically significant adverse reactions are described elsewhere in the labeling.

- Cardiomyopathy and Arrhythmias [see *Warnings and Precautions (5.1)*]
- Secondary Malignancies [see *Warnings and Precautions (5.2)*]
- Extravasation and Tissue Necrosis [see *Warnings and Precautions (5.3)*]
- Severe Myelosuppression [see *Warnings and Precautions (5.4)*]
- Tumor Lysis Syndrome [see *Warnings and Precautions (5.6)*]
- Radiation Sensitization and Radiation Recall [see *Warnings and Precautions (5.7)*]

6.1 Clinical Trials Experience

Because clinical trials are conducted under widely varying conditions, adverse reaction rates observed in the clinical trials of a drug cannot be directly compared to rates in the clinical trials of another drug and may not reflect the rates observed in practice.

Breast Cancer

The safety data below were collected from 1,492 women who received doxorubicin hydrochloride at a dose of 60 mg/m² and cyclophosphamide at a dose of 600 mg/m² (AC) every 3 weeks for 4 cycles for the adjuvant treatment of axillary lymph node positive breast cancer. The median number of cycles received was 4. Selected adverse reactions reported in this study are provided in Table 2. No treatment-related deaths were reported in patients on either arm of the study.

Table 2. Selected Adverse Reactions in Patients with Early Breast Cancer Involving Axillary Lymph Nodes

Adverse Reactions	AC* N=1,492	Conventional CMF N=739
	%	%
Alopecia	92	71
Vomiting	34	25
Vomiting ≤ 12 hours	37	12
Vomiting > 12 hours	5	2
Intractable		
Leukopenia	3.4	9.4
Grade 3 (1,000 to 1,999 /mm ³)	0.3	0.3
Grade 4 (<1,000 /mm ³)		

Shock, sepsis	2	1
Systemic infection	2	1
Cardiac dysfunction	0.2	0.1
Asymptomatic	0.1	0
Transient	0.1	0
Symptomatic		
Thrombocytopenia	0	0.3
Grade 3 (25,000 to 49,999 /mm ³)	0.1	0
Grade 4 (<25,000 /mm ³)		
AC = doxorubicin hydrochloride, cyclophosphamide; CMF = cyclophosphamide, methotrexate, fluorouracil * Includes pooled data from patients who received either AC for 4 cycles or AC for 4 cycles followed by CMF for 3 cycles		

6.2 Postmarketing Experience

The following adverse reactions have been identified during postapproval use of doxorubicin hydrochloride for injection. Because these reactions are reported voluntarily from a population of uncertain size, it is not always possible to reliably estimate their frequency or establish a causal relationship to drug exposure.

Cardiac – Cardiogenic shock

Cutaneous – Skin and nail hyperpigmentation, oncolysis, rash, itching, photosensitivity, urticaria, acral erythema, palmar plantar erythrodysesthesia

Gastrointestinal – Nausea, mucositis, stomatitis, necrotizing colitis, typhlitis, gastric erosions, gastrointestinal tract bleeding, hematochezia, esophagitis, anorexia, abdominal pain, dehydration, diarrhea, hyperpigmentation of the oral mucosa

Hypersensitivity – Anaphylaxis

Laboratory Abnormalities – Increased ALT, increased AST

Neurological – Peripheral sensory and motor neuropathy, seizures, coma

Ocular – Conjunctivitis, keratitis, lacrimation

Vascular – Phleboscrosis, phlebitis/thrombophlebitis, hot flashes, thromboembolism

Other – Malaise/asthenia, fever, chills, weight gain

7 DRUG INTERACTIONS

7.1 Effect of Other Drugs on Doxorubicin Hydrochloride for Injection

Inhibitors of CYP3A4, CYP2D6, and P-gp

Concomitant use of doxorubicin hydrochloride with inhibitors of CYP3A4, CYP2D6, or P-glycoprotein (P-gp), increased concentrations of doxorubicin, which may increase the incidence and severity of adverse reactions of doxorubicin hydrochloride. Avoid concomitant use of doxorubicin hydrochloride for injection with inhibitors of CYP3A4, CYP2D6, or P-gp.

Inducers of CYP3A4, CYP2D6, or P-gp

Concomitant use of doxorubicin hydrochloride with inducers of CYP3A4, CYP2D6, or P-gp may decrease the concentration of doxorubicin. Avoid concomitant use of doxorubicin hydrochloride for injection with inducers of CYP3A4, CYP2D6, or P-gp.

Paclitaxel

Paclitaxel, when given prior to doxorubicin hydrochloride, increases the plasma-concentrations of doxorubicin and its metabolites. Administer doxorubicin hydrochloride for injection prior to paclitaxel if used concomitantly.

7.2 Concomitant Use of Trastuzumab

Concomitant use of trastuzumab and doxorubicin hydrochloride results in an increased risk of cardiac dysfunction. Avoid concomitant administration of doxorubicin hydrochloride for injection and trastuzumab [see *Warnings and Precautions* (5.1)].

Patients receiving doxorubicin after stopping treatment with trastuzumab may also be at an increased risk of developing cardiotoxicity. Trastuzumab may persist in the circulation for up to 7 months. Therefore, avoid anthracycline-based therapy for up to 7 months after stopping trastuzumab when possible. If anthracyclines are used before this time, carefully monitor cardiac function.

7.3 Concomitant Use of Dexrazoxane

Do not administer dexrazoxane as a cardioprotectant at the initiation of doxorubicin hydrochloride-containing chemotherapy regimens. In a randomized trial in women with metastatic breast cancer, initiation of dexrazoxane with doxorubicin hydrochloride-based chemotherapy resulted in a significantly lower tumor response rate (48% vs. 63%; $p=0.007$) and shorter time to progression compared to doxorubicin hydrochloride-based chemotherapy alone.

7.4 Concomitant Use of 6-Mercaptopurine

Doxorubicin hydrochloride may potentiate 6-mercaptopurine-induced hepatotoxicity. In 11 patients with refractory leukemia treated with 6-mercaptopurine (500 mg/m² intravenously daily for 5 days per cycle every 2 to 3 weeks) and doxorubicin hydrochloride (50 mg/m² intravenous once per cycle every 2 to 3 weeks) alone or with vincristine and prednisone, all developed hepatic dysfunction manifested by increased total serum bilirubin, alkaline phosphatase and aspartate aminotransferase.

8 USE IN SPECIFIC POPULATIONS

8.1 Pregnancy

Risk Summary

Based on findings in animals and its mechanism of action, doxorubicin hydrochloride for injection can cause fetal harm when administered to a pregnant woman; avoid the use of doxorubicin hydrochloride for injection during the 1st trimester. Available human data do not establish the presence or absence of major birth defects and miscarriage related to the use of doxorubicin hydrochloride during the 2nd and 3rd trimesters. Doxorubicin hydrochloride was teratogenic and embryotoxic in rats and embryotoxic in rabbits when

administered during organogenesis at doses approximately 0.07 times (based on body surface area) the recommended human dose of 60 mg/m² (see *Data*). Advise pregnant women of the potential risk to a fetus.

In the U.S. general population, the estimated background risk of major birth defects and miscarriage in clinically recognized pregnancies is 2% to 4% and 15% to 20%, respectively.

Data

Animal Data

Doxorubicin hydrochloride was teratogenic and embryotoxic at doses of 0.8 mg/kg/day (about 0.07 times the recommended human dose based on body surface area) when administered during the period of organogenesis in rats. Teratogenicity and embryotoxicity were also seen using discrete periods of treatment. The most susceptible was the 6- to 9-day gestation period at doses of 1.25 mg/kg/day and greater. Characteristic malformations included esophageal and intestinal atresia, tracheo-esophageal fistula, hypoplasia of the urinary bladder, and cardiovascular anomalies. Doxorubicin hydrochloride was embryotoxic (increase in embryofetal deaths) and abortifacient at 0.4 mg/kg/day (about 0.07 times the recommended human dose based on body surface area) in rabbits when administered during the period of organogenesis.

8.2 Lactation

Risk Summary

Doxorubicin was measured in the milk of one lactating patient after therapy with 70 mg/m² of doxorubicin hydrochloride given as a 15-minute intravenous infusion. The peak milk concentration at 24 hours after treatment was 4.4-fold greater than the corresponding plasma concentration. Doxorubicin was detectable in the milk up to 72 hours. There are no data on the effects of doxorubicin hydrochloride on the breastfed child or the effects on milk production. Because of the potential for serious adverse reactions in the breastfed child, advise women not to breastfeed during treatment with doxorubicin hydrochloride for injection and for 10 days after the final dose.

8.3 Females and Males of Reproductive Potential

Pregnancy Testing

Verify the pregnancy status of females of reproductive potential prior to initiating doxorubicin hydrochloride for injection.

Contraception

Females

Doxorubicin hydrochloride for injection can cause fetal harm when administered to pregnant women [see *Use in Specific Populations (8.1)*]. Advise female patients of reproductive potential to use highly effective contraception during treatment with doxorubicin hydrochloride for injection and for 6 months after treatment [see *Use in Specific Populations (8.1)*].

Males

Doxorubicin hydrochloride may damage spermatozoa and testicular tissue, resulting in possible genetic fetal abnormalities. Due to the potential for genotoxicity, advise males with female partners of reproductive potential to use effective contraception during treatment with doxorubicin hydrochloride for injection and for 3 months after treatment [see *Nonclinical Toxicology* (13.1)]. Males with pregnant partners should use condoms during treatment and for at least 10 days after the final dose [see *Nonclinical Toxicology* (13.1), *Use in Specific Populations* (8.1)].

Infertility

Females

In females of reproductive potential, doxorubicin hydrochloride may cause infertility and result in amenorrhea. Premature menopause can occur. Recovery of menses and ovulation is related to age at treatment [see *Nonclinical Toxicology* (13.1)].

Males

Doxorubicin hydrochloride may result in oligospermia, azoospermia, and permanent loss of fertility. Sperm counts have been reported to return to normal levels in some men. This may occur several years after the end of therapy [see *Nonclinical Toxicology* (13.1)].

8.4 Pediatric Use

Based on postmarketing reports, pediatric patients treated with doxorubicin hydrochloride are at risk for developing late cardiovascular dysfunction. Risk factors include young age at treatment (especially < 5 years), high cumulative doses and receipt of combined modality therapy. Long-term periodic cardiovascular monitoring is recommended for all pediatric patients who have received doxorubicin hydrochloride. Doxorubicin hydrochloride, as a component of intensive chemotherapy regimens administered to pediatric patients, may contribute to prepubertal growth failure and may also contribute to gonadal impairment, which is usually temporary.

There are no recommended dose adjustments based on age. Doxorubicin clearance was increased in patients aged 2 years to 20 years as compared to adults, while doxorubicin clearance was similar in infants less than 2 years as compared to adults [see *Clinical Pharmacology* (12.3)].

8.5 Geriatric Use

Clinical experience in patients who were 65 years of age and older who received doxorubicin hydrochloride-based chemotherapy regimens for metastatic breast cancer showed no overall differences in safety and effectiveness compared with younger patients.

8.6 Hepatic Impairment

The clearance of doxorubicin was reduced in patients with elevated serum total bilirubin levels. Doxorubicin hydrochloride for injection is contraindicated in patients with severe hepatic impairment (defined as Child Pugh Class C or serum bilirubin levels greater than 5 mg/dL) [see *Contraindications* (4)]. Reduce the dose of doxorubicin hydrochloride for injection in patients with serum total bilirubin levels greater than 1.2 mg/dL [see *Dosage*

and Administration (2.4), Warnings and Precautions (5.5)].

10 OVERDOSAGE

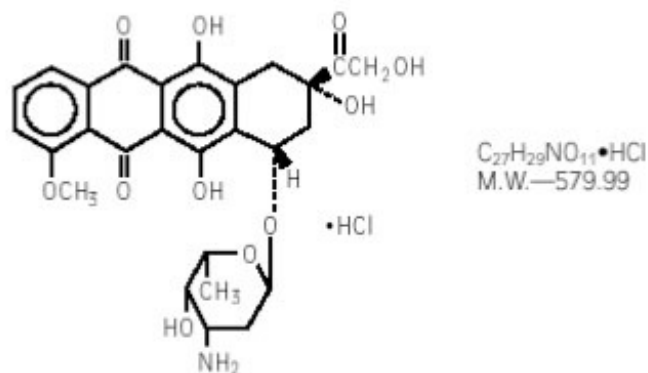
Few cases of overdose have been described.

A 58-year-old man with acute lymphoblastic leukemia received 10-fold overdose of doxorubicin hydrochloride (300 mg/m²) in one day. He was treated with charcoal filtration, hemopoietic growth factor (G-CSF), proton pump inhibitor and antimicrobial prophylaxis. The patient suffered sinus tachycardia, grade 4 neutropenia and thrombocytopenia for 11 days, severe mucositis and sepsis. The patient recovered completely 26 days after the overdose.

A 17-year-old girl with osteogenic sarcoma received 150 mg of doxorubicin hydrochloride daily for 2 days (intended dose was 50 mg per day for 3 days). The patient developed severe mucositis on days 4 to 7 after the overdose and chills and pyrexia on day 7. The patient was treated with antibiotics and platelets and recovered 18 days after overdose.

11 DESCRIPTION

Doxorubicin hydrochloride is an anthracycline topoisomerase inhibitor isolated from cultures of *Streptomyces peucetius* var. *caesius*. The chemical name of doxorubicin hydrochloride is 5,12-Naphthacenedione, 10-[(3-amino-2,3,6-trideoxy- α -L-lyxohexopyranosyl)oxy]-7,8,9,10-tetrahydro-6,8,11-trihydroxy-8-(hydroxylacetyl)-1-methoxy-, hydrochloride (8S-*cis*)-. The chemical structure of doxorubicin hydrochloride



is:

Doxorubicin Hydrochloride for Injection, USP, for intravenous use is a sterile red to orange red lyophilized cake or powder, provided in vials containing 20 mg or 50 mg doxorubicin hydrochloride, USP.

Each 20 mg lyophilized vial contains 20 mg of doxorubicin hydrochloride, USP (equivalent to 18.74 mg of doxorubicin free base) and 100 mg of lactose monohydrate.

Each 50 mg lyophilized vial contains 50 mg of doxorubicin hydrochloride, USP (equivalent to 46.86 mg of doxorubicin free base) and 250 mg of lactose monohydrate.

12 CLINICAL PHARMACOLOGY

12.1 Mechanism of Action

The cytotoxic effect of doxorubicin hydrochloride on malignant cells and its toxic effects on various organs are thought to be related to nucleotide base intercalation and cell membrane lipid binding activities of doxorubicin. Intercalation inhibits nucleotide replication and action of DNA and RNA polymerases. The interaction of doxorubicin with topoisomerase II to form DNA-cleavable complexes appears to be an important mechanism of doxorubicin hydrochloride cytotoxic activity.

12.3 Pharmacokinetics

Pharmacokinetic studies conducted in patients with various types of tumors have shown that doxorubicin follows multiphasic disposition after intravenous injection. In four patients, doxorubicin demonstrated dose-independent pharmacokinetics across a dose range of 30 mg/m² to 70 mg/m².

Distribution

The distribution half-life is approximately 5 minutes. Steady-state distribution volume ranges from 809 L/m² to 1214 L/m². Binding of doxorubicin and its major metabolite, doxorubicinol, to plasma proteins is 75% and is independent of plasma concentration of doxorubicin up to 1.1 mcg/mL.

Doxorubicin does not cross the blood brain barrier.

Elimination

Plasma clearance is ranges from 324 mL/min/m² to 809 mL/min/m². The terminal half-life is 20 hours to 48 hours.

Metabolism

Doxorubicin is a substrate of CYP3A4, CYP2D6, and P-gp.

Enzymatic reduction at the 7 position and cleavage of the daunosamine sugar yields aglycones which are accompanied by free radical formation, the local production of which may contribute to the cardiotoxic activity of doxorubicin hydrochloride.

Disposition of doxorubicinol in patients is formation rate limited, with the terminal half-life of doxorubicinol being similar to doxorubicin. The relative exposure of doxorubicinol, i.e. the ratio between the AUC of doxorubicinol and the AUC of doxorubicin is approximately 0.5.

Excretion

Plasma clearance is predominately by metabolism and biliary excretion. Approximately 40% of the dose appears in the bile in 5 days, while only 5% to 12% of the drug and its metabolites appear in the urine during the same time period. In urine, < 3% of the dose was recovered as doxorubicinol over 7 days.

Specific Populations

Weight

Systemic clearance of doxorubicin is significantly reduced in obese women with ideal body weight greater than 130%. There was a significant reduction in clearance without any change in volume of distribution in obese patients when compared with normal patients with less than 115% ideal body weight.

Pediatric Patients

Following administration of doses ranging from 10 mg/m² to 75 mg/m² of doxorubicin hydrochloride to 60 patients ranging from 2 months to 20 years, doxorubicin clearance averaged 1,443 ± 114 mL/min/m². Further analysis demonstrated that clearance in 52 patients ranging from 2 to 20 years (1540 mL/min/m²) was increased compared with adults. However, clearance in infants younger than 2 years of age (813 mL/min/m²) was decreased compared with older patients (ranging from 2 to 20 years) and approached the range of clearance values determined in adults [see *Use in Specific Populations* (8.4)].

Sex

A published clinical study involving 6 men and 21 women with no prior anthracycline therapy reported a significantly higher median doxorubicin clearance in men compared to women (1,088 mL/min/m² versus 433 mL/min/m²). However, the terminal half-life of doxorubicin was longer in men compared to women (54 versus 35 hours).

Patients with Hepatic Impairment

The clearance of doxorubicin and doxorubicinol was reduced in patients with elevated serum total bilirubin concentrations [see *Dosage and Administration* (2.4), *Warnings and Precautions* (5.5)].

13 NONCLINICAL TOXICOLOGY

13.1 Carcinogenesis, Mutagenesis, Impairment of Fertility

Doxorubicin hydrochloride treatment can increase the risk of secondary malignancies based on postmarketing reports [see *Warnings and Precautions* (5.2)]. Doxorubicin hydrochloride was mutagenic in the *in vitro* Ames assay, and clastogenic in multiple *in vitro* assays (CHO cell, V79 hamster cell, human lymphoblast, and SCE assays) and the *in vivo* mouse micronucleus assay.

Doxorubicin hydrochloride decreased fertility in female rats at the doses of 0.05 and 0.2 mg/kg/day (approximately 0.005 and 0.02 times the recommended human dose, based on body surface area).

A single intravenous dose of 0.1 mg/kg doxorubicin hydrochloride (approximately 0.01 times the recommended human dose based on body surface area) was toxic to male reproductive organs in animal studies, producing testicular atrophy, diffuse degeneration of the seminiferous tubules, and oligospermia/hypospermia in rats. Doxorubicin hydrochloride induces DNA damage in rabbit spermatozoa and dominant lethal mutations in mice.

14 CLINICAL STUDIES

14.1 Adjuvant Breast Cancer

The efficacy of doxorubicin hydrochloride-containing regimens for the post-operative, adjuvant treatment of surgically resected breast cancer was evaluated in a meta-analysis conducted by the Early Breast Cancer Trialists Collaborative Group (EBCTCG). The EBCTCG meta-analyses compared cyclophosphamide, methotrexate, and fluorouracil

(CMF) to no chemotherapy (19 trials including 7,523 patients) and doxorubicin hydrochloride-containing regimens with CMF as an active control (6 trials including 3,510 patients). Data from the meta-analysis of trials comparing CMF to no therapy were used to establish the historical treatment effect size for CMF regimens. The major efficacy outcome measures were disease-free survival (DFS) and overall survival (OS).

Of the 3,510 women (2,157 received doxorubicin hydrochloride-containing regimens and 1,353 received CMF treatment) with early breast cancer involving axillary lymph nodes included in the six trials from the meta-analyses, approximately 70% were premenopausal and 30% were postmenopausal.

At the time of the meta-analysis, 1,745 first recurrences and 1,348 deaths had occurred. The analyses demonstrated that doxorubicin hydrochloride-containing regimens retained at least 75% of the historical CMF adjuvant effect on DFS with a hazard ratio (HR) of 0.91 (95% CI: 0.82, 1.01) and on OS with a HR of 0.91 (95% CI: 0.81, 1.03). Efficacy results are provided in Table 3 and Figures 1 and 2.

Table 3. Summary of Randomized Trials Comparing Doxorubicin Hydrochloride-Containing Regimens Versus CMF in Meta-Analysis

Study (starting year)	Regimens	No. of Cycles	No. of Patients	Doxorubicin Hydrochloride-Containing Regimens vs. CMF HR** (95% CI)	
				DFS	OS
NSABP B-15 (1984)	AC CMF	4 6	1,562* 776	0.93 (0.82, 1.06)	0.97 (0.83, 1.12)
SECSG 2 (1976)	FAC CMF	6 6	260 268	0.86 (0.66, 1.13)	0.93 (0.69, 1.26)
ONCOFRANCE (1978)	FACV CMF	12 12	138 113	0.71 (0.49, 1.03)	0.65 (0.44, 0.96)
SE Sweden BCG A (1980)	AC CMF	6 6	21 22	0.59 (0.22, 1.61)	0.53 (0.21, 1.37)
NSABC Israel Br0283 (1983)	AVbCMF† CMF	4 6 6	55 50	0.91 (0.53, 1.57)	0.88 (0.47, 1.63)
Austrian BCSG 3 (1984)	CMFVA CMF	6 8	121 124	1.07 (0.73, 1.55)	0.93 (0.64, 1.35)
Combined Studies	Doxorubicin Hydrochloride-Containing Regimen CMF		2,157 1,353	0.91 (0.82, 1.01)	0.91 (0.81, 1.03)

Abbreviations: DFS = disease free survival; OS = overall survival; AC = doxorubicin hydrochloride, cyclophosphamide; AVbCMF = doxorubicin hydrochloride, vinblastine, cyclophosphamide, methotrexate, fluorouracil; CMF = cyclophosphamide, methotrexate, fluorouracil; CMFVA = cyclophosphamide, methotrexate, fluorouracil, vincristine, doxorubicin hydrochloride; FAC = fluorouracil, doxorubicin hydrochloride,

cyclophosphamide; FACV = fluorouracil, doxorubicin hydrochloride, cyclophosphamide, vincristine; HR = hazard ratio; CI = confidence interval

* Includes pooled data from patients who received either AC alone for 4 cycles, or who were treated with AC for 4 cycles followed by 3 cycles of CMF.

** Hazard ratio of less than 1 indicates that the treatment with doxorubicin hydrochloride-containing regimens is associated with lower risk of disease recurrences or death compared to the treatment with CMF.

† Patients received alternating cycles of AVb and CMF.

Figure 1. Meta-analysis of Disease-Free Survival

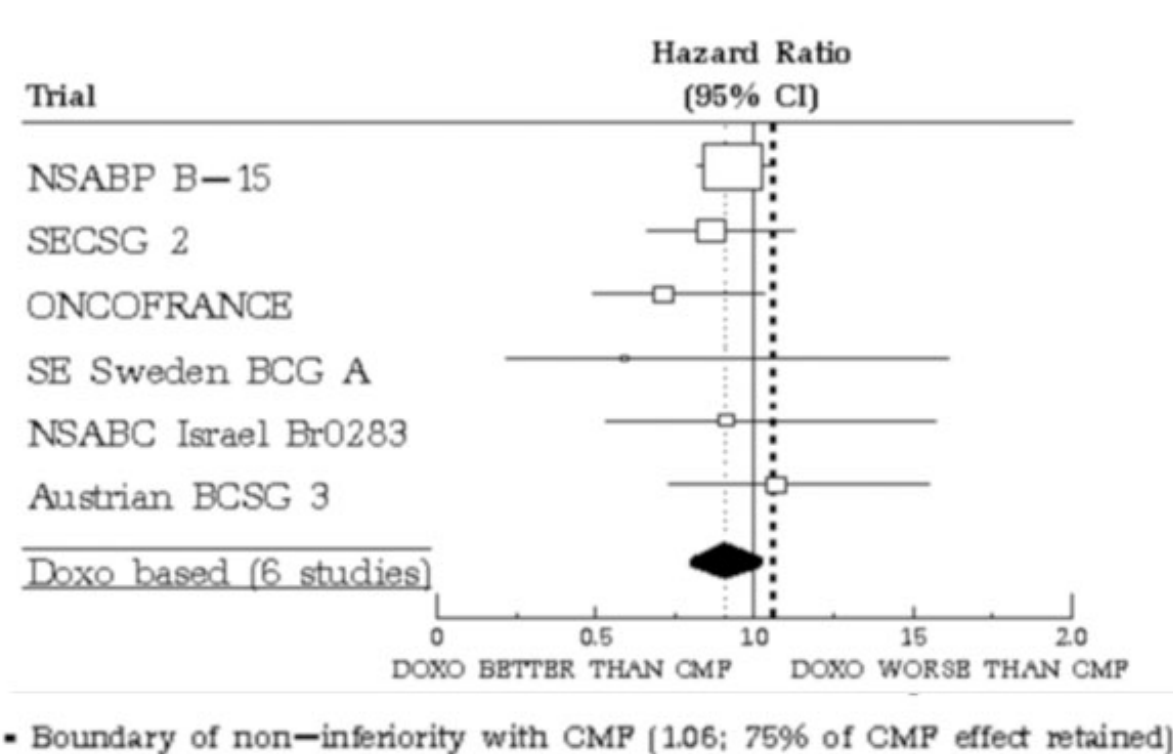
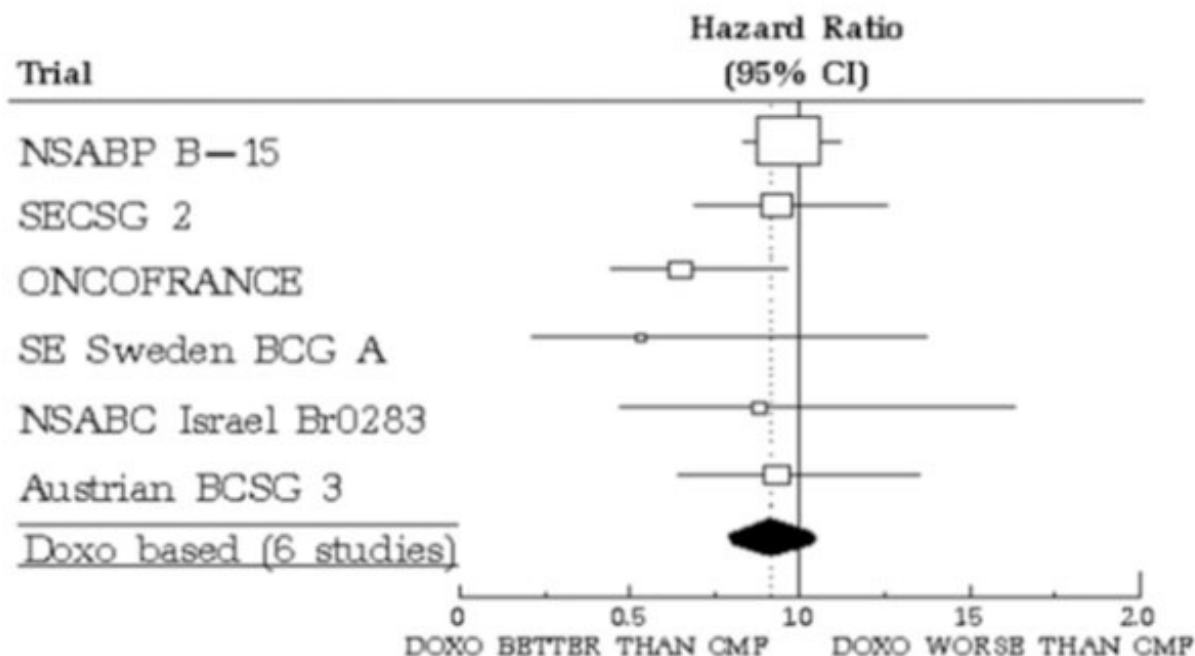


Figure 2. Meta-analysis of Overall Survival



15 REFERENCES

1. "Hazardous Drugs". OSHA. <http://www.osha.gov/SLTC/hazardousdrugs/index.html>

16 HOW SUPPLIED/STORAGE AND HANDLING

Doxorubicin Hydrochloride for Injection, USP is supplied as a sterile red to orange red lyophilized cake or powder, available in single-dose vial packs or 10 vial packs as:

20 mg/vial:

Single-Dose Vial in mono-carton

NDC 70121-1218-1

10 mono-cartons in Outer Carton

NDC 70121-1218-7

50 mg/vial:

Single-Dose Vial in a Carton

NDC 70121-1219-1

Store all vials at 20° to 25°C (68° to 77°F); excursions permitted between 15° to 30°C (59° to 86°F) [see USP Controlled Room Temperature]. Protect from light. Retain in carton until time of use. Discard unused portion.

Handling and Disposal

Doxorubicin Hydrochloride for Injection, USP is a cytotoxic drug. Follow applicable special handling and disposal procedures.¹

17 PATIENT COUNSELING INFORMATION

Advise the patient to read the FDA-approved patient labeling (Patient Information).

Cardiomyopathy

Advise patients that doxorubicin hydrochloride for injection can cause irreversible myocardial damage and to contact a healthcare provider for symptoms of heart failure during or after treatment [*see Warnings and Precautions (5.1)*].

Secondary Malignancy

Advise patients of the increased risk of treatment-related leukemia [*see Warnings and Precautions (5.2)*].

Myelosuppression

Advise patients that doxorubicin hydrochloride for injection can reduce the absolute neutrophil count resulting in an increased risk of infection and to contact a healthcare provider for new onset fever or symptoms of infection [*see Warnings and Precautions (5.4)*].

Embryo-Fetal Toxicity

Advise pregnant women and females of reproductive potential of the potential risk to a fetus, and to inform their healthcare provider of a known or suspected pregnancy [*see Warnings and Precautions (5.8), Use in Specific Populations (8.1)*].

Advise females of reproductive potential to use effective contraception during treatment with doxorubicin hydrochloride for injection and for 6 months after treatment [*see Warnings and Precautions (5.8), Use in Specific Populations (8.3)*].

Advise patients that doxorubicin hydrochloride for injection may induce chromosomal damage in sperm, which may lead to loss of fertility and offspring with birth defects. Advise males with female partners of reproductive potential to use effective contraception during treatment with doxorubicin hydrochloride for injection and for 3 months after treatment [*see Warnings and Precautions (5.8), Use in Specific Populations (8.3), Nonclinical Toxicology (13.1)*].

Advise males with pregnant partners to use condoms during treatment with doxorubicin hydrochloride for injection and for at least 10 days after the final dose [*see Use in Specific Populations (8.3)*].

Lactation

Advise females not to breastfeed during treatment with doxorubicin hydrochloride for injection and for 10 days after the final dose [*see Use in Specific Populations (8.2)*].

Infertility

Advise females and males of the potential loss of fertility from doxorubicin hydrochloride for injection [*see Use in Specific Populations (8.3)*].

Gastrointestinal and Dermatologic Adverse Reactions

Advise patients that doxorubicin hydrochloride for injection can cause nausea, vomiting, diarrhea, mouth/oral pain and sores and to contact a healthcare provider should they develop any severe symptoms that prevent them from eating and drinking [*see Adverse Reactions (6)*]. Advise patients that doxorubicin hydrochloride for Injection can cause alopecia [*see Adverse Reactions (6.1)*].

Administration

Advise patients that doxorubicin hydrochloride for injection can cause their urine to appear red for 1 to 2 days after administration.

This product's label may have been updated. For full prescribing information, please visit www.amneal.com.

Manufactured by:

Amneal Oncology Pvt. Ltd.

Telangana 509301, INDIA

Distributed by:

Amneal Pharmaceuticals LLC

Bridgewater, NJ 08807

Rev. 02-2021-02

Patient Information

DOXORUBICIN (dox" oh roo' bi sin) **HYDROCHLORIDE for injection, for intravenous use**

What is the most important information I should know about doxorubicin hydrochloride for injection?

Doxorubicin hydrochloride for injection may cause serious side effects including:

- **Heart muscle problems.** Doxorubicin hydrochloride for injection can cause heart muscle damage that may lead to heart failure. Heart failure means your heart does not pump blood well. Heart failure is irreversible in some cases and can lead to death. Heart failure can happen during your treatment with doxorubicin hydrochloride for injection or months to years after stopping treatment. Your risk of heart muscle damage increases with higher total amounts of doxorubicin hydrochloride for injection that you receive in your lifetime. Your risk of heart failure is higher if you:
 - have other heart problems
 - have had or are currently receiving radiation therapy to your chest
 - have had treatment with certain other anti-cancer medicines
 - take other medicines that can have severe side effects on your heart

Tell your healthcare provider if you get any of these symptoms of heart failure during or after treatment with doxorubicin hydrochloride for injection:

◦ extreme tiredness or weakness	◦ fast heartbeat
◦ shortness of breath	◦ swelling of your feet and ankles

Your healthcare provider will do tests to check the strength of your heart muscle before, during, and after your treatment with doxorubicin hydrochloride for injection.

- **Heart rhythm problems.** Doxorubicin hydrochloride for injection can cause serious heart rhythm problems that may lead to death. This can happen during your infusion, within a few hours after your infusion or anytime during treatment with doxorubicin hydrochloride for injection. Tell your healthcare provider if you get any symptoms of heart rhythm problems, such as feeling as if your heart is beating fast, irregular or

slow, or you feel lightheaded, dizzy, short of breath, chest discomfort or you faint.

- **Risk of new cancers.** You may have an increased risk of developing certain blood cancers called acute myelogenous leukemia (AML) or myelodysplastic syndrome (MDS) after treatment with doxorubicin hydrochloride for injection. Talk with your healthcare provider about your risk of developing new cancers if you receive doxorubicin hydrochloride for injection.
- **Skin damage at or near the vein where doxorubicin hydrochloride for injection is given.** Doxorubicin hydrochloride for injection can damage the skin if it leaks out of the vein and might cause blisters, skin sores or severe tissue damage, which may require skin grafts. Tell your healthcare provider if you get burning or stinging during your infusion.
- **Decreased blood cell counts.** Doxorubicin hydrochloride for injection can cause a decrease in neutrophils (a type of white blood cell important in fighting bacterial infections) and platelets (important for clotting and to control bleeding). This may lead to a serious infection, the need for blood transfusions, treatment in a hospital or death. Your healthcare provider will check your blood cell counts before each infusion and during treatment with doxorubicin hydrochloride for injection. Call your healthcare provider right away if you get a fever (temperature of 100.4°F or higher) or chills with shivering.

What is doxorubicin hydrochloride for injection?

Doxorubicin hydrochloride for injection is a prescription medicine used to treat certain types of cancers. Doxorubicin may be used alone or along with other anti-cancer medicines.

Do not receive doxorubicin hydrochloride for injection if:

- you have had a recent heart attack (within the past 4 to 6 weeks) or have severe heart problems.
- your blood cell counts (platelets, red blood cells, and white blood cells) are very low because of prior chemotherapy.
- you have severe liver problems.
- you have had a severe allergic reaction to doxorubicin.

Before you receive doxorubicin hydrochloride for injection, tell your healthcare provider about all of your medical conditions, including if you:

- have heart problems including heart failure.
- are currently receiving radiation therapy or plan to receive radiation to the chest.
- have liver problems.
- have had an allergic reaction to doxorubicin.
- are pregnant or plan to become pregnant. Doxorubicin hydrochloride for injection can harm your unborn baby. You should not become pregnant during treatment with doxorubicin hydrochloride for injection. Tell your healthcare provider right away if you become pregnant or think you may be pregnant.

Females who are able to become pregnant:

- Your healthcare provider will check to see if you are pregnant before you start treatment with Doxorubicin
- You should use effective birth control (contraception) during treatment with doxorubicin hydrochloride for injection and for 6 months after treatment

Males:

- Doxorubicin hydrochloride for injection can affect your sperm and could cause birth defects.
 - If you have a female partner who can become pregnant, you should use effective birth control during treatment with doxorubicin hydrochloride for injection and for 3 months after treatment
 - If you have a pregnant partner, you should use condoms during treatment with doxorubicin hydrochloride for injection and for at least 10 days after the final dose
 - Talk to your healthcare provider about birth control methods that may be right for you
- are breastfeeding or plan to breastfeed. Doxorubicin can pass into your breast milk. Do not breastfeed during treatment with doxorubicin hydrochloride for injection and for 10 days after the final dose. Talk to your healthcare provider about the best way to feed your baby during this time.

Tell your healthcare provider about all the medicines you take, including prescription and over-the-counter medicines, vitamins, and herbal supplements.

How will I receive doxorubicin hydrochloride for injection?

- Doxorubicin hydrochloride for injection will be given to you into your vein through an intravenous (IV) line.
- Your healthcare provider will do blood tests to check for side effects during treatment with doxorubicin hydrochloride for injection.
- Your healthcare provider may stop your treatment, change the timing of your treatment, or change the dose of your treatment if you have certain side effects while receiving doxorubicin hydrochloride for injection.

What are the possible side effects of doxorubicin hydrochloride for injection?

Doxorubicin hydrochloride for injection may cause serious side effects, including:

- See **“What is the most important information I should know about doxorubicin hydrochloride for injection?”**
The most common side effects of doxorubicin hydrochloride for injection include:
 - total hair loss (alopecia). Your hair may re-grow after your treatment.
 - nausea
 - vomiting

Other side effects:

- Red colored urine. You may have red colored urine for 1 to 2 days after your infusion of doxorubicin hydrochloride for injection. This is normal. Tell your healthcare provider if it does not stop in a few days, or if you see what looks like blood or blood clots in your urine.
- Call your healthcare provider if you have severe symptoms that prevent you from eating or drinking, such as:
 - nausea
 - vomiting
 - diarrhea

- mouth pain or sores

Doxorubicin hydrochloride for injection may cause fertility problems in males. This could affect your ability to father a child. Talk to your healthcare provider if this is a concern for you.

Doxorubicin hydrochloride for injection may cause fertility problems in females. Your periods (menstrual cycle) may completely stop when you receive doxorubicin hydrochloride for injection. Your periods may or may not return following treatment. Early menopause has also happened. Talk to your healthcare provider if this is a concern for you.

These are not all of the possible side effects of doxorubicin hydrochloride for injection.

Call your doctor for medical advice about side effects. You may report side effects to FDA at 1-800-FDA-1088.

General information about the safe and effective use of doxorubicin hydrochloride for injection.

Medicines are sometimes prescribed for purposes other than those listed in a Patient Information leaflet.

You can ask your pharmacist or healthcare provider for information about doxorubicin that is written for health professionals.

What are the ingredients in doxorubicin hydrochloride for injection?

Active ingredient: doxorubicin hydrochloride, USP

Inactive ingredients for Doxorubicin Hydrochloride for Injection: lactose monohydrate.

For more information, call 1-877-835-5472 or visit www.amneal.com

This Patient Information has been approved by the U.S. Food and Drug Administration.

Manufactured by:

Amneal Oncology Pvt. Ltd.

Telangana 509301, INDIA

Distributed by:

Amneal Pharmaceuticals LLC

Bridgewater, NJ 08807

Rev. 02-2020-01

PRINCIPAL DISPLAY PANEL

Doxorubicin Hydrochloride for Injection USP 20 mg/vial

Rev. 02-2021-02

<p>amneal®</p> <p>Rx only</p> <p>LYOPHILIZED CYTOTOXIC AGENT</p> <p>FOR INTRAVENOUS USE ONLY</p> <p>20 mg/vial</p> <p>DOXOrubicin Hydrochloride for Injection, USP</p> <p>NDC 70121-1218-7</p>			
<p>NDC 70121-1218-7</p> <p>DOXOrubicin Hydrochloride for Injection, USP</p> <p>20 mg/vial</p> <p>FOR INTRAVENOUS USE ONLY</p> <p>LYOPHILIZED CYTOTOXIC AGENT</p> <p>10 Single-Dose Vials</p> <p>Rx only</p> <p>amneal®</p>	<p>Each vial contains Doxorubicin Hydrochloride, USP 20 mg equivalent to 18.74 mg of doxorubicin free base and Lactose Monohydrate 100 mg. Reconstitute with 10 mL 0.9% Sodium Chloride Injection, USP. Each mL contains 2 mg of Doxorubicin Hydrochloride, USP. Shake well to dissolve. Consult package insert for further dilution directions prior to administration. Store unconstituted vial at 20° to 25°C (68° to 77°F); excursions permitted between 15° to 30°C (59° to 86°F) [see USP Controlled Room Temperature]. After reconstitution, the solution is stable for 7 days at room temperature and 15 days under refrigeration, 2° to 8°C (36° to 46°F). Protect from light. Retain in carton until time of use. Discard unused portion.</p>	<p>NDC 70121-1218-7</p> <p>DOXOrubicin Hydrochloride for Injection, USP</p> <p>20 mg/vial</p> <p>FOR INTRAVENOUS USE ONLY</p> <p>LYOPHILIZED CYTOTOXIC AGENT</p> <p>10 Single-Dose Vials</p> <p>Rx only</p> <p>amneal®</p>	<p>USUAL DOSAGE: See package insert for complete prescribing information. DOXORUBICIN is a cytotoxic agent and should not be prescribed without thorough knowledge of dose, indications and toxicity. WARNING: Severe cellulitis, vesication and tissue necrosis will occur if doxorubicin is extravasated during administration. Mfg. Lic. No: 7429/A3/2014 Manufactured by: Amneal Oncology Pvt. Ltd. Telangana 509301, INDIA Distributed by: Amneal Pharmaceuticals LLC Bridgewater, NJ 08807 Rev. 02-2021-02</p> <p>Lot: Exp.:</p>

<p>amneal®</p> <p>Rx only</p> <p>FOR INTRAVENOUS USE ONLY</p> <p>20 mg/vial</p> <p>DOXOrubicin Hydrochloride for Injection, USP</p> <p>NDC 70121-1218-1</p>			
<p>DOXOrubicin Hydrochloride for Injection, USP</p> <p>20 mg/vial</p> <p>FOR INTRAVENOUS USE ONLY</p> <p>SINGLE-DOSE VIAL</p> <p>LYOPHILIZED CYTOTOXIC AGENT</p> <p>Rx only</p> <p>amneal®</p>	<p>Each vial contains Doxorubicin Hydrochloride, USP 20 mg (equivalent to 18.74 mg of doxorubicin free base) and Lactose Monohydrate 100 mg. Reconstitute with 10 mL 0.9% Sodium Chloride Injection, USP. Each mL contains 2 mg of Doxorubicin Hydrochloride, USP. Shake well to dissolve. Consult package insert for further dilution directions prior to administration. Store unconstituted vial at 20° to 25°C (68° to 77°F); excursions permitted between 15° to 30°C (59° to 86°F) [see USP Controlled Room Temperature]. After reconstitution, the solution is stable for 7 days at room temperature and 15 days under refrigeration, 2° to 8°C (36° to 46°F). Protect from light. Retain in carton until time of use. Discard unused portion.</p>	<p>NDC 70121-1218-1</p> <p>DOXOrubicin Hydrochloride for Injection, USP</p> <p>20 mg/vial</p> <p>FOR INTRAVENOUS USE ONLY</p> <p>SINGLE-DOSE VIAL</p> <p>LYOPHILIZED CYTOTOXIC AGENT</p> <p>Rx only</p> <p>amneal®</p>	<p>USUAL DOSAGE: See package insert for complete prescribing information. DOXORUBICIN is a cytotoxic agent and should not be prescribed without thorough knowledge of dose, indications and toxicity. WARNING: Severe cellulitis, vesication and tissue necrosis will occur if doxorubicin is extravasated during administration. Mfg. Lic. No: 7429/A3/2014 Manufactured by: Amneal Oncology Pvt. Ltd. Telangana 509301, INDIA Distributed by: Amneal Pharmaceuticals LLC Bridgewater, NJ 08807 Rev. 02-2021-02</p> <p>Lot: Exp.:</p>

Non Varnish area for Lot and EXP
9 x 30 mm

Doxorubicin Hydrochloride for Injection USP 50 mg/vial

Rev. 02-2021-02

0126167B

<p>amneal®</p> <p>Rx only</p> <p>FOR INTRAVENOUS USE ONLY</p> <p>DOXOrubicin Hydrochloride for Injection, USP</p> <p>50 mg/vial</p>			
<p>NDC 70121-1219-1</p> <p>DOXOrubicin Hydrochloride for Injection, USP</p> <p>50 mg/vial</p> <p>FOR INTRAVENOUS USE ONLY</p> <p>SINGLE-DOSE VIAL</p> <p>LYOPHILIZED</p> <p>CYTOTOXIC AGENT</p>	<p>Each vial contains Doxorubicin Hydrochloride, USP 50 mg (equivalent to 46.86 mg of doxorubicin free base) and Lactose Monohydrate 250 mg. Reconstitute with 25 mL 0.9% Sodium Chloride Injection, USP. Each mL contains 2 mg of Doxorubicin Hydrochloride, USP. Shake well to dissolve. Consult package insert for further dilution directions prior to administration. Store unconstituted vial at 20° to 25°C (68° to 77°F); excursions permitted between 15° to 30°C (59° to 86°F) [see USP Controlled Room Temperature]. After reconstitution, the solution is stable for 7 days at room temperature and 15 days under refrigeration, 2° to 8°C (36° to 46°F). Protect from light. Retain in carton until time of use. Discard unused portion.</p>	<p>NDC 70121-1219-1</p> <p>DOXOrubicin Hydrochloride for Injection, USP</p> <p>50 mg/vial</p> <p>FOR INTRAVENOUS USE ONLY</p> <p>SINGLE-DOSE VIAL</p> <p>LYOPHILIZED</p> <p>CYTOTOXIC AGENT</p>	<p>USUAL DOSAGE: See package insert for complete prescribing information. DOXORUBICIN is a cytotoxic agent and should not be prescribed without thorough knowledge of dose, indications and toxicity. WARNING: Severe cellulitis, vesication and tissue necrosis will occur if doxorubicin is extravasated during administration.</p> <p>Mfg. Lic. No: 7429/A3/2014</p> <p>Manufactured by: Amneal Oncology Pvt. Ltd. Telangana 509301, INDIA</p> <p>Distributed by: Amneal Pharmaceuticals LLC Bridgewater, NJ 08807</p> <p>Rev. 02-2021-02</p> <p>N 3 70121 12191 6</p>
<p>amneal®</p>		<p>amneal®</p>	<p>Lot: Exp.:</p>

NDC 70121-1219-1


DOXOrubicin Hydrochloride for Injection, USP

50 mg/vial

FOR INTRAVENOUS USE ONLY

LYOPHILIZED

SINGLE-DOSE VIAL Rx only



Each vial contains Doxorubicin Hydrochloride, USP 50 mg (equivalent to 46.86 mg of doxorubicin free base) and Lactose Monohydrate 250 mg.

USUAL DOSAGE: See package insert for complete prescribing information.

Reconstitute with 25 mL 0.9% Sodium Chloride Injection, USP.

Store unconstituted vial at 20° to 25°C (68° to 77°F) [see USP Controlled Room Temperature].


Protect from light. Retain in carton until time of use. Discard unused portion.

WARNING: Severe cellulitis, vesication and tissue necrosis will occur if doxorubicin is extravasated during administration.

Manufactured by: **Amneal Oncology Pvt. Ltd.**
Telangana 509301, INDIA

Distributed by: **Amneal Pharmaceuticals LLC**
Bridgewater, NJ 08807

Rev. 02-2021-02 Mfg. Lic. No: 7429/A3/2014



70121 12191

Non Varnish area for Lot and EXP
9 x 39 mm

DOXORUBICIN HYDROCHLORIDE

doxorubicin injection, powder, lyophilized, for solution

Product Information

Product Type	HUMAN PRESCRIPTION DRUG	Item Code (Source)	NDC:70121-1218
Route of Administration	INTRAVENOUS		

Active Ingredient/Active Moiety

Ingredient Name	Basis of Strength	Strength
DOXORUBICIN HYDROCHLORIDE (UNII: 82F2G7BL4E) (DOXORUBICIN - UNII:80168379AG)	DOXORUBICIN HYDROCHLORIDE	2 mg in 1 mL

Inactive Ingredients

Ingredient Name	Strength
LACTOSE MONOHYDRATE (UNII: EWQ57Q8I5X)	

Packaging

#	Item Code	Package Description	Marketing Start Date	Marketing End Date
1	NDC:70121-1218-7	10 in 1 CARTON	02/17/2017	
1	NDC:70121-1218-1	1 in 1 CARTON		
1		10 mL in 1 VIAL; Type 0: Not a Combination Product		

Marketing Information

Marketing Category	Application Number or Monograph Citation	Marketing Start Date	Marketing End Date
--------------------	--	----------------------	--------------------

ANDA	ANDA208888	02/17/2017	
------	------------	------------	--

DOXORUBICIN HYDROCHLORIDE

doxorubicin hydrochloride injection, powder, lyophilized, for solution

Product Information

Product Type	HUMAN PRESCRIPTION DRUG	Item Code (Source)	NDC:70121-1219
Route of Administration	INTRAVENOUS		

Active Ingredient/Active Moiety

Ingredient Name	Basis of Strength	Strength
DOXORUBICIN HYDROCHLORIDE (UNII: 82F2G7BL4E) (DOXORUBICIN - UNII:80168379AG)	DOXORUBICIN HYDROCHLORIDE	2 mg in 1 mL

Inactive Ingredients

Ingredient Name	Strength
LACTOSE MONOHYDRATE (UNII: EWQ57Q8I5X)	

Packaging

#	Item Code	Package Description	Marketing Start Date	Marketing End Date
1	NDC:70121-1219-1	1 in 1 CARTON	02/17/2017	
1		25 mL in 1 VIAL; Type 0: Not a Combination Product		

Marketing Information

Marketing Category	Application Number or Monograph Citation	Marketing Start Date	Marketing End Date
ANDA	ANDA208888	02/17/2017	

Labeler - Amneal Pharmaceuticals LLC (827748190)