

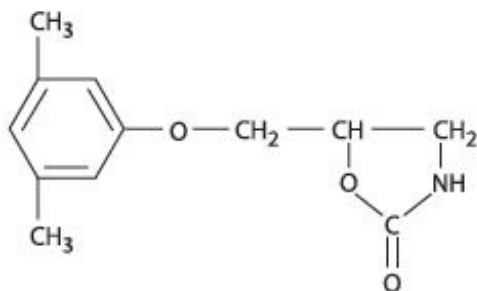
**METAXALONE- metaxalone tablet**  
**Amneal Pharmaceuticals of New York LLC**

-----  
**Metaxalone Tablets**  
**(800 mg)**  
**Rx Only**

**DESCRIPTION**

Metaxalone tablets are available as an 800 mg oval, convex pink tablet.

Chemically, metaxalone is 5-[(3,5-dimethylphenoxy) methyl]-2-oxazolidinone. The empirical formula is  $C_{12}H_{15}NO_3$ , which corresponds to a molecular weight of 221.25. The structural formula is:



Metaxalone is a white to almost white, odorless crystalline powder freely soluble in chloroform, soluble in methanol and in 96% ethanol, but practically insoluble in ether or water.

Each tablet contains 800 mg metaxalone and the following inactive ingredients: alginic acid, ammonium calcium alginate, B-Rose Liquid, corn starch, and magnesium stearate.

**CLINICAL PHARMACOLOGY**

**Mechanism of Action**

The mechanism of action of metaxalone in humans has not been established, but may be due to general central nervous system (CNS) depression. Metaxalone has no direct action on the contractile mechanism of striated muscle, the motor end plate, or the nerve fiber.

**Pharmacokinetics**

The pharmacokinetics of metaxalone have been evaluated in healthy adult volunteers after single-dose administration of metaxalone tablets under fasted and fed conditions at doses ranging from 400 mg to 800 mg.

**Absorption**

Peak plasma concentrations of metaxalone occur approximately 3 hours after a 400 mg oral dose under fasted conditions. Thereafter, metaxalone concentrations decline log-linearly with a terminal half-life of  $9.0 \pm 4.8$  hours. Doubling the dose of metaxalone tablets from 400 mg to 800 mg results in a roughly proportional increase in metaxalone exposure as indicated by peak plasma concentrations ( $C_{max}$ ) and area under the curve (AUC). Dose proportionality at doses above 800 mg has not been studied. The absolute bioavailability of metaxalone is not known.

The single-dose pharmacokinetic parameters of metaxalone in two groups of healthy volunteers are

shown in Table 1.

**Table 1: Mean (% CV) Metaxalone Pharmacokinetic Parameters**

Dose (mg)	C <sub>max</sub> (ng/mL)	T <sub>max</sub> (h)	AUC <sub>∞</sub> (ng•h/mL)	t <sub>1/2</sub> (h)	CL/F (L/h)
400 <sup>1</sup>	983 (53)	3.3 (35)	7479 (51)	9.0 (53)	68 (50)
800 <sup>2</sup>	1816 (43)	3.0 (39)	15044 (46)	8.0 (58)	66 (51)

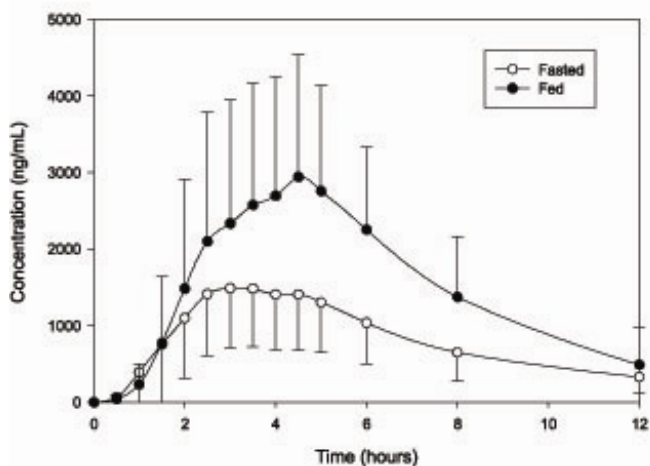
<sup>1</sup>Subjects received 1x400 mg tablet under fasted conditions (N=42)  
<sup>2</sup>Subjects received 2x400 mg tablets under fasted conditions (N=59)

### Food Effects

A randomized, two-way, crossover study was conducted in 42 healthy volunteers (31 males, 11 females) administered one 400 mg metaxalone tablet under fasted conditions and following a standard high-fat breakfast. Subjects ranged in age from 18 to 48 years (mean age = 23.5 ± 5.7 years). Compared to fasted conditions, the presence of a high fat meal at the time of drug administration increased C<sub>max</sub> by 177.5% and increased AUC (AUC<sub>0-t</sub>, AUC<sub>∞</sub>) by 123.5% and 115.4%, respectively. Time-to-peak concentration (T<sub>max</sub>) was also delayed (4.3 h *versus* 3.3 h) and terminal half-life was decreased (2.4 h *versus* 9.0 h) under fed conditions compared to fasted.

In a second food effect study of similar design, two 400 mg metaxalone tablets (800 mg) were administered to healthy volunteers (N=59, 37 males, 22 females), ranging in age from 18 to 50 years (mean age = 25.6 ± 8.7 years). Compared to fasted conditions, the presence of a high fat meal at the time of drug administration increased C<sub>max</sub> by 193.6% and increased AUC (AUC<sub>0-t</sub>, AUC<sub>∞</sub>) by 146.4% and 142.2%, respectively. Time-to-peak concentration (T<sub>max</sub>) was also delayed (4.9 h *versus* 3.0 h) and terminal half-life was decreased (4.2 h *versus* 8.0 h) under fed conditions compared to fasted conditions. Similar food effect results were observed in the above study when one metaxalone 800 mg tablet was administered in place of two metaxalone 400 mg tablets. The increase in metaxalone exposure coinciding with a reduction in half-life may be attributed to more complete absorption of metaxalone in the presence of a high fat meal (Figure 1).

Figure 1. Mean (SD) Concentrations of Metaxalone following an 800 mg Dose under Fasted and Fed Conditions



### Distribution, Metabolism, and Excretion

Although plasma protein binding and absolute bioavailability of metaxalone are not known, the apparent volume of distribution (V/F ~ 800 L) and lipophilicity (log P = 2.42) of metaxalone suggest that the drug is extensively distributed in the tissues. Metaxalone is metabolized by the liver and excreted in the

urine as unidentified metabolites. Hepatic Cytochrome P450 enzymes play a role in the metabolism of metaxalone. Specifically, CYP1A2, CYP2D6, CYP2E1, and CYP3A4 and, to a lesser extent, CYP2C8, CYP2C9, and CYP2C19 appear to metabolize metaxalone.

Metaxalone does not significantly inhibit major CYP enzymes such as CYP1A2, CYP2A6, CYP2B6, CYP2C8, CYP2C9, CYP2C19, CYP2D6, CYP2E1, and CYP3A4. Metaxalone does not significantly induce major CYP enzymes such as CYP1A2, CYP2B6, and CYP3A4 *in vitro*.

### **Pharmacokinetics in Special Populations**

#### **Age**

The effects of age on the pharmacokinetics of metaxalone were determined following single administration of two 400 mg tablets (800 mg) under fasted and fed conditions. The results were analyzed separately, as well as in combination with the results from three other studies. Using the combined data, the results indicate that the pharmacokinetics of metaxalone are significantly more affected by age under fasted conditions than under fed conditions, with bioavailability under fasted conditions increasing with age.

The bioavailability of metaxalone under fasted and fed conditions in three groups of healthy volunteers of varying age is shown in Table 2.

**Table 2: Mean (% CV) Pharmacokinetic Parameters Following Single Administration of Two 400 mg Metaxalone Tablets (800 mg) under Fasted and Fed Conditions**

	Younger Volunteers		Older Volunteers			
Age (years)	25.6 ± 8.7		39.3 ± 10.8		71.5 ± 5.0	
N	59		21		23	
Food	Fasted	Fed	Fasted	Fed	Fasted	Fed
C <sub>max</sub> (ng/mL)	1816 (43)	3510 (41)	2719 (46)	2915 (55)	3168 (43)	3680 (59)
T <sub>max</sub> (h)	3.0 (39)	4.9 (48)	3.0 (40)	8.7 (91)	2.6 (30)	6.5 (67)
AUC <sub>0-t</sub> (ng·h/mL)	14531 (47)	20683 (41)	19836 (40)	20482 (37)	23797 (45)	24340 (48)
AUC <sub>∞</sub> (ng·h/mL)	15045 (46)	20833 (41)	20490 (39)	20815 (37)	24194 (44)	24704 (47)

#### **Gender**

The effect of gender on the pharmacokinetics of metaxalone was assessed in an open label study, in which 48 healthy adult volunteers (24 males, 24 females) were administered two metaxalone 400 mg tablets (800 mg) under fasted conditions. The bioavailability of metaxalone was significantly higher in females compared to males as evidenced by C<sub>max</sub> (2115 ng/mL versus 1335 ng/mL) and AUC<sub>∞</sub> (17884 ng·h/mL versus 10328 ng·h/mL). The mean half-life was 11.1 hours in females and 7.6 hours in males. The apparent volume of distribution of metaxalone was approximately 22% higher in males than in females, but not significantly different when adjusted for body weight. Similar findings were also seen when the previously described combined dataset was used in the analysis.

#### **Hepatic/Renal Insufficiency**

The impact of hepatic and renal disease on the pharmacokinetics of metaxalone has not been determined. In the absence of such information, metaxalone tablets should be used with caution in patients with hepatic and/or renal impairment.

## INDICATIONS AND USAGE

Metaxalone tablets are indicated as an adjunct to rest, physical therapy, and other measures for the relief of discomforts associated with acute, painful musculoskeletal conditions. The mode of action of this drug has not been clearly identified, but may be related to its sedative properties. Metaxalone does not directly relax tense skeletal muscles in man.

## CONTRAINDICATIONS

Known hypersensitivity to any components of this product.

Known tendency to drug induced, hemolytic, or other anemias.

Significantly impaired renal or hepatic function.

## WARNINGS

### Serotonin Syndrome

Cases of serotonin syndrome, a potentially life-threatening condition, have been reported during concomitant use of serotonergic drugs with metaxalone used within the recommended dosage range (see **PRECAUTIONS: Drug Interactions**) and with metaxalone as a single agent taken at doses higher than the recommended dose (see **OVERDOSAGE**). Serotonergic drugs include selective serotonin reuptake inhibitors (SSRIs), serotonin and norepinephrine reuptake inhibitors (SNRIs), tricyclic antidepressants (TCAs), triptans, 5-HT<sub>3</sub> receptor antagonists, opioids (particularly fentanyl, meperidine, and methadone), drugs that affect the serotonergic neurotransmitter system (e.g., mirtazapine, trazodone, tramadol), and drugs that impair metabolism of serotonin (including monoamine oxidase (MAO) inhibitors, both those intended to treat psychiatric disorders and also others, such as linezolid and intravenous methylene blue) (see **PRECAUTIONS: Drug Interactions**).

Serotonin syndrome symptoms may include mental status changes (e.g., agitation, hallucinations, coma), autonomic instability (e.g., tachycardia, labile blood pressure, hyperthermia), neuromuscular aberrations (e.g., hyperreflexia, incoordination, rigidity), and/or gastrointestinal symptoms (e.g., nausea, vomiting, diarrhea). The onset of symptoms generally occurs within several hours to a few days, but may occur later than that. Discontinue metaxalone if serotonin syndrome is suspected.

### Risks from Concomitant Use with Alcohol or other CNS Depressants

The sedative effects of metaxalone and other CNS depressants (e.g., alcohol, benzodiazepines, opioids, tricyclic antidepressants (TCAs)) may be additive. Exercise caution with patients who take more than one of these CNS depressants simultaneously. Follow patients closely for signs and symptoms of respiratory depression and sedation (see **PRECAUTIONS: Drug Interactions**).

## PRECAUTIONS

Metaxalone should be administered with great care to patients with pre-existing liver damage. Serial liver function studies should be performed in these patients.

False-positive Benedict's tests, due to an unknown reducing substance, have been noted. A glucose-specific test will differentiate findings.

Taking metaxalone tablets with food may enhance general CNS depression; elderly patients may be especially susceptible to this CNS effect (see **CLINICAL PHARMACOLOGY: Pharmacokinetics** and **PRECAUTIONS: Information for Patients**).

## Information for Patients

### Driving or Operating Heavy Machinery

Metaxalone tablets may impair mental and/or physical abilities required for performance of hazardous tasks, such as operating machinery or driving a motor vehicle, especially when used with alcohol or other CNS depressants.

### Serotonin Syndrome

Inform patients that metaxalone could cause a rare but potentially life-threatening condition resulting from administration of doses higher than the recommended dose or from concomitant administration of serotonergic drugs with metaxalone used within the recommended dosage range. Warn patients of the symptoms of serotonin syndrome and to seek medical attention right away if symptoms develop. Instruct patients to inform their healthcare providers if they are taking, or plan to take, serotonergic medications (see **WARNINGS, PRECAUTIONS: Drug Interactions, and OVERDOSAGE**).

### **Drug Interactions**

#### CNS Depressants

The sedative effects of metaxalone and other CNS depressants (e.g., alcohol, benzodiazepines, opioids, tricyclic antidepressants (TCAs)) may be additive. Exercise caution with patients who take more than one of these CNS depressants simultaneously. Follow patients closely for signs and symptoms of respiratory depression and sedation (see **WARNINGS**).

#### Serotonergic Drugs

Serotonin syndrome has resulted from concomitant use of serotonergic drugs with metaxalone used within the recommended dosage range (see **WARNINGS**). If concomitant use is warranted, carefully observe the patient, particularly during treatment initiation and dose adjustment. Discontinue metaxalone if serotonin syndrome is suspected.

Examples of serotonergic drugs include: selective serotonin reuptake inhibitors (SSRIs), serotonin and norepinephrine reuptake inhibitors (SNRIs), tricyclic antidepressants (TCAs), triptans, 5-HT<sub>3</sub> receptor antagonists, opioids (particularly fentanyl, meperidine, and methadone), drugs that affect the serotonin neurotransmitter system (e.g., mirtazapine, trazodone, tramadol), monoamine oxidase (MAO) inhibitors (those intended to treat psychiatric disorders and also others, such as linezolid and intravenous methylene blue).

### **Carcinogenesis, Mutagenesis, Impairment of Fertility**

The carcinogenic potential of metaxalone has not been determined.

### **Pregnancy**

Reproduction studies in rats have not revealed evidence of impaired fertility or harm to the fetus due to metaxalone. Post marketing experience has not revealed evidence of fetal injury, but such experience cannot exclude the possibility of infrequent or subtle damage to the human fetus. Safe use of metaxalone has not been established with regard to possible adverse effects upon fetal development. Therefore, metaxalone tablets should not be used in women who are or may become pregnant and particularly during early pregnancy unless, in the judgement of the physician, the potential benefits outweigh the possible hazards.

### **Nursing Mothers**

It is not known whether this drug is secreted in human milk. As a general rule, nursing should not be undertaken while a patient is on a drug since many drugs are excreted in human milk.

### **Pediatric Use**

Safety and effectiveness in children 12 years of age and below have not been established.

## **ADVERSE REACTIONS**

### **The most frequent reactions to metaxalone include:**

CNS: drowsiness, dizziness, headache, and nervousness or "irritability";

Digestive: nausea, vomiting, gastrointestinal upset.

### **Other adverse reactions are:**

Immune System: anaphylaxis, hypersensitivity reaction, rash with or without pruritus;

Hematologic: leukopenia; hemolytic anemia;

Hepatobiliary: jaundice;

CNS: cases of serotonin syndrome, a potentially life-threatening condition, have been reported during concomitant use of serotonergic drugs with metaxalone used within the recommended dosage range and with metaxalone as a single agent taken at doses higher than the recommended dose (see **WARNINGS, PRECAUTIONS: Drug Interactions, and OVERDOSAGE**).

**To report SUSPECTED ADVERSE REACTIONS, contact Amneal Pharmaceuticals at 1-877-835-5472 or FDA at 1-800-FDA-1088 or [www.fda.gov/medwatch](http://www.fda.gov/medwatch).**

## **OVERDOSAGE**

Deaths by deliberate or accidental overdose have occurred with metaxalone, particularly in combination with antidepressants, and have been reported with this class of drug in combination with alcohol.

Serotonin syndrome has been reported when metaxalone was used at doses higher than the recommended dose (see **WARNINGS and ADVERSE REACTIONS**).

When determining the LD<sub>50</sub> in rats and mice, progressive sedation, hypnosis, and finally respiratory failure were noted as the dosage increased. In dogs, no LD<sub>50</sub> could be determined as the higher doses produced an emetic action in 15 to 30 minutes.

*Treatment* - Gastric lavage and supportive therapy. Consultation with a regional poison control center is recommended.

## **DOSAGE AND ADMINISTRATION**

The recommended dose for adults and children over 12 years of age is one 800 mg tablet three to four times a day.

## **HOW SUPPLIED**

Metaxalone tablets are available as an 800 mg oval, convex, pink tablet with one side debossed "M" and other side debossed "58/59".

They are available as follows:

Bottles of 100:       NDC 0115-1748-01

Bottles of 500:       NDC 0115-1748-02

Store at Controlled Room Temperature, between 15°C and 30°C (59°F and 86°F).

## **Rx Only**

2035-03

Manufactured By:

**Bora Pharmaceutical Laboratories Inc.**

Jhunan, Taiwan

Distributed By:

**Amneal Pharmaceuticals LLC**

Bridgewater, NJ 08807

Rev. 11-2018-00

**PRINCIPAL DISPLAY PANEL**

NDC 0115-1748-01		<b>Each Tablet Contains:</b>		 N 3 01151 74801 9	<b>Non-Varnish Area</b> (For Lot And Exp. Date) (1.5" X 0.875")
<b>Metaxalone</b>		Metaxalone..... 800 mg			
<b>Tablets</b>		<b>DOSAGE:</b> The recommended dose for adults and children over 12 years of age is one tablet (800 mg) three to four times a day.			
<b>800 mg</b> SEALED FOR YOUR PROTECTION		See package insert for prescribing information.			
 Rx only 100 Tablets		<b>Bulk Container - Not For Household Dispensing</b> <b>Store at Controlled Room Temperature, between 15°C and 30°C (59°F and 86°F).</b> Dispense in tight (USP), child resistant containers.			
		Manufactured by: <b>Bora Pharmaceutical Laboratories Inc.</b> Jhunan, Taiwan			
		Distributed by: <b>Amneal Pharmaceuticals LLC</b> Bridgewater, NJ 08807			
		Rev. 11-2018-00		2033-02	

**METAXALONE**

metaxalone tablet

**Product Information**

<b>Product Type</b>	HUMAN PRESCRIPTION DRUG	<b>Item Code (Source)</b>	NDC:0115-1748
<b>Route of Administration</b>	ORAL		

**Active Ingredient/Active Moiety**

Ingredient Name	Basis of Strength	Strength
METAXALONE (UNII: 1NMA9J598 Y) (METAXALONE - UNII:1NMA9J598 Y)	METAXALONE	800 mg

**Product Characteristics**

<b>Color</b>	PINK	<b>Score</b>	2 pieces
<b>Shape</b>	OVAL	<b>Size</b>	19mm
<b>Flavor</b>		<b>Imprint Code</b>	M;5859
<b>Contains</b>			

**Packaging**

#	Item Code	Package Description	Marketing Start Date	Marketing End Date
1	NDC:0115-1748-01	100 in 1 BOTTLE; Type 0: Not a Combination Product	11/01/2007	

2 | NDC:0115-1748-02 | 500 in 1 BOTTLE; Type 0: Not a Combination Product | 11/01/2007

## Marketing Information

Marketing Category	Application Number or Monograph Citation	Marketing Start Date	Marketing End Date
NDA	NDA013217	11/01/2007	

**Labeler** - Amneal Pharmaceuticals of New York LLC (123797875)

## Establishment

Name	Address	ID/FEI	Business Operations
BORA PHARMACEUTICAL LABORATORIES INC.		656139511	ANALYSIS(0115-1748) , LABEL(0115-1748) , MANUFACTURE(0115-1748) , PACK(0115-1748)

Revised: 5/2019

Amneal Pharmaceuticals of New York LLC