

ADELGADINA- chromium nicotinate, citrus aurantium fruit, and garcinia gummi-gutta fruit tablet

ProMex LLC

ADELGADINA

Supplement Facts		
Serving Size: 2 tablets		
Serving per container: 30		
	Amount per Serving	% Daily Value
Chromium Polynicotinate	130mcg	108%
Bitter Orange (30%-Synephrine)	100mg	*
Garcinia Cambogia (50% Hydroxycitric acid)	1000mg	*

Proprietary Blend: Vanadium, Irvingia Gabonensis, Green Coffee Bean, Green Tea extract, Dicafeina Malate, Dong Quai Root, Field Mint Root, Ginger Root, Licorice Root, Peonia Blanca Root, Skullcap Root, Terra Alba

* % Daily Value not established

Other ingredients : Calcium Carbonate, Crosscarmallose Sodium, Dicalcium Phospate, Magnesium stearate, pharmaceutical glaze, silicon dioxide & stearic acid

STORAGE CONDITIONS

Store in a cool dry place

Suggested Use

Take 2 tablets 30min before a meal. Do Not exceed 6 tablets daily.

ALLERGEN WARNING

This product was produced in a facility that may also process ingredients containing milk, egg, soybeans, fish, shellfish,treenuts, and peanuts.

WARNINGS

KEEP OUT OF THE REACH OF CHILDREN.

Not for use by individuals under the age of 18. Do not use if pregnant or nursing. Do not exceed recommended dosage. Chromium may enhance insulin sensitivity and affect glucose levels, diabetics and hypoglycemics should consult their healthcare provider before using this product.

Do not use this product if you have heart disease, high blood pressure or are taking any prescription monoamine oxidase inhibitor (MAOI). If you are uncertain whether your prescription contains MAOI, consult a healthcare professional before taking this product. Not recommended for use by pregnant or lactating women.

*These statements have not been evaluated by the Food & Drug Administration. This product is not intended to treat, cure or prevent any disease.

Lot:

Exp:

ProMex, LLC

Miami, FL 33179 **Toll Free:** (855) 877-6639

PRINCIPAL DISPLAY PANEL - 60 Tablet Bottle Box

NATURAL

ADELGADINA

Exclusive

Formula

Weight Control*

60 tablets

NATURAL

Adelgadina

ADELGADINA

Control de Peso*

**Exclusive
Formula**

**Formula
Exclusiva**

Weight Control*

60 tablets / tabletas

Supplement Facts/Información Nutricional

Serving Size / Tamaño por Ración: 2 tablets / 2 tabletas

Serving per container / Raciones por Envase: 30

	Amount per Serving Cantidad por Ración	% Daily Value % Valor Diario
Chromium Polynicotinate Cromo Polinicotinato	130mcg	108%
Bitter Orange (30%-Synephrine) Naranja amarga (30% -Sinefrina)	100mg	*
Garcinia Cambogia (50% Hydroxycitric acid/ácido hidroxícitrico)	1000mg	*
*% Daily Value not established / *% Valor diario no establecido		

Proprietary Blend: Vanadium, Irvingia Gabonensis, Green Coffee Bean, Green Tea extract, Dicafeina Malate, Dong Quai Root, Field Mint Root, Ginger Root, Licorice Root, Peonia Blanca Root, Skullcap Root, Terra Alba

Formula Privada: Vanadio, Irvingia Gabonensis, Grano verde de cafe, Extracto de Te Verde, Dicafeina de Malate, Dong Quai Raíz, Raíz de Menta de Campo, Raíz de jengibre, regaliz Raíz, Raíz Blanca de Peonia, Raíz de escutelaria, Terra Alba

Other ingredients : Calcium Carbonate, Crosscarmallose Sodium, Dicalcium Phospate, Magnesium stearate, pharmaceutical glaze, silicon dioxide & stearic acid
Otros Ingredientes: Carbonato de calcio, Croscarmelosa sódica, Fosfato dicálcico, Estearato de magnesio, Glaseado farmacéutico, Dióxido de silicio, y Ácido esteárico

STORAGE CONDITIONS: Store in a cool dry place

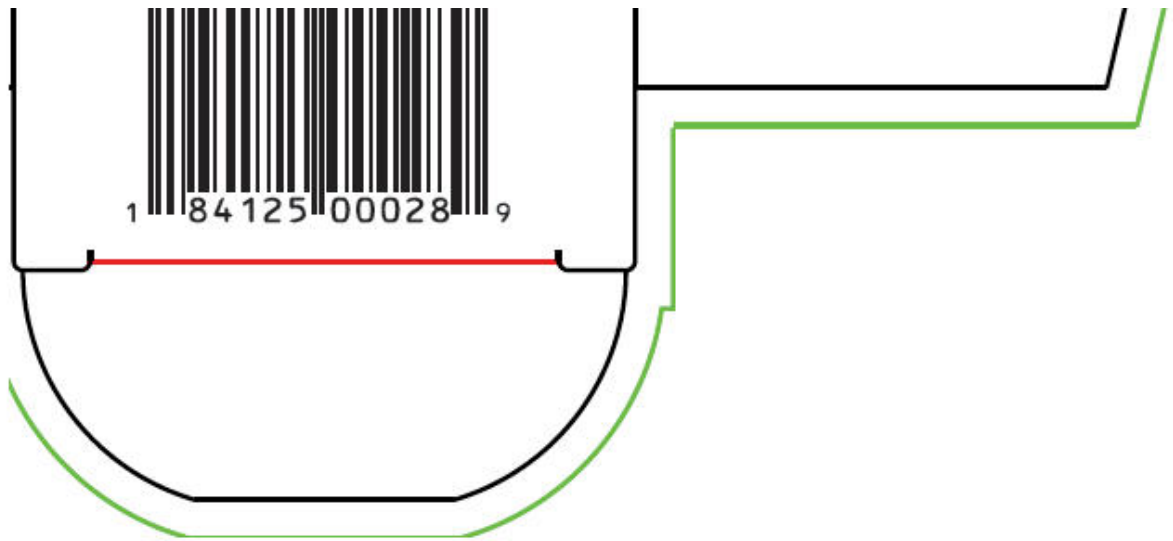
CONDICIONES DE ALMACENAMIENTO: Almacenar en un lugar fresco y seco

Lot:

Exp:

ProMex, LLC
Miami, FL 33179 Toll Free: (855) 877-6639





NATURAL
Adelgadina

NATURAL

Adelgadina

DINA

Suggested Use: Take 2 tablets 30min before a meal. Do Not exceed 6 tablets daily.

Uso Sugerido: Tomar 2 tabletas 30 minutos antes de comer. No exceda 6 tabletas al día.

ALLERGEN WARNING: This product was produced in a facility that may also process ingredients containing milk, egg, soybeans, fish, shellfish, tree nuts, and peanuts.

WARNINGS:

KEEP OUT OF THE REACH OF CHILDREN.

Not for use by individuals under the age of 18. Do not use if pregnant or nursing. Do not exceed recommended dosage. Chromium may enhance insulin sensitivity and affect glucose levels, diabetics and hypoglycemics should consult their healthcare provider before using this product.

Do not use this product if you have heart disease, high blood pressure or are taking any prescription monoamine oxidase inhibitor (MAOI). If you are uncertain whether your prescription contains

VC14-0477D-ARD

ADELGAD

ADVERTENCIA DE ALERGENO: Este producto fue producido en una instalación que también puede procesar ingredientes que contienen leche, huevo, soya, pescado, mariscos, nueces de árbol, y los cacahuates.

Exclusive Formula
Formula Exclusiva

MAOI, consult a healthcare professional before taking this product. Not recommended for use by pregnant or lactating women.

ADVERTENCIAS:

MANTENER FUERA DEL ALCANCE DE LOS NIÑOS. No para uso de personas menores de 18 años No utilice si está embarazada o amamantando. No exceda la dosis recomendada.

Cromo puede incrementar la sensibilidad a la insulina y afectar los niveles de glucosa, los diabéticos y los hipoglucémicos deben consultar a su médico antes de usar este producto.

No utilice este producto si usted tiene enfermedad del corazón, presión arterial alta o está tomando algún inhibidor de la monoamino oxidasa prescripción (IMAO). Si no está seguro de si su receta contiene IMAO, consulte a un profesional de la salud antes de tomar este producto.

No se recomienda para mujeres embarazadas o en periodo de lactancia.

*These statements have not been evaluated by the Food & Drug Administration. This product is not intended to treat, cure or prevent any disease.

* Las aseveraciones presentadas aqui no han sido evaluadas por el Food & Drug Administration. Este producto no pretende diagnosticar, tratar, curar o prevenir alguna enfermedad.

ADELGADINA

chromium nicotinate, citrus aurantium fruit, and garcinia gummi-gutta fruit tablet

Product Information

Product Type	DIETARY SUPPLEMENT	Item Code (Source)	NHRIC:58988-1820
Route of Administration	ORAL		

Active Ingredient/Active Moiety

Ingredient Name	Basis of Strength	Strength
CHROMIUM NICOTINATE (UNII: A150AY412V) (NIACIN - UNII:2679MF687A, CHROMIC CATION - UNII:X1N4508KF1)	CHROMIUM NICOTINATE	130 ug
CITRUS AURANTIUM FRUIT (UNII: DQD16J2B5O) (CITRUS AURANTIUM FRUIT - UNII:DQD16J2B5O)	CITRUS AURANTIUM FRUIT	100 mg
GARCINIA GUMMI-GUTTA FRUIT (UNII: D0QJ18UQVR) (GARCINIA GUMMI-GUTTA FRUIT - UNII:D0QJ18UQVR)	GARCINIA GUMMI-GUTTA FRUIT	1000 mg

Inactive Ingredients

Ingredient Name	Strength
-----------------	----------

VANADIUM (UNII: 00J9J9XKDE)
BUSH MANGO (UNII: CAZ59QT0HZ)
ARABICA COFFEE BEAN (UNII: 3SW678MX72)
GREEN TEA LEAF (UNII: W2ZU1RY8B0)
CAFFEINE (UNII: 3G6A5W338E)
ANGELICA SINENSIS ROOT (UNII: B66F4574UG)
MENTHA ARVENSIS WHOLE (UNII: 46477RRB3O)
GINGER (UNII: C5529G5JPQ)
LICORICE (UNII: 61ZBX54883)
PAEONIA LACTIFLORA ROOT (UNII: 3Z3866YW6P)
SCUTELLARIA LATERIFLORA (UNII: 7BP4DH5PDC)
CALCIUM SULFATE DIHYDRATE (UNII: 4846Q921YM)
CALCIUM CARBONATE (UNII: H0G9379FGK)
CROSCARMELOSE SODIUM (UNII: M28OL1HH48)
ANHYDROUS DIBASIC CALCIUM PHOSPHATE (UNII: L11K75P92J)
MAGNESIUM STEARATE (UNII: 70097M6I3O)
SHELLAC (UNII: 46N107B71O)
SILICON DIOXIDE (UNII: ETJ7Z6XBU4)
STEARIC ACID (UNII: 4ELV7Z65AP)

Packaging

#	Item Code	Package Description	Marketing Start Date	Marketing End Date
1	NHRIC:58988-1820-1	1 in 1 BOX		
1		60 in 1 BOTTLE		

Marketing Information

Marketing Category	Application Number or Monograph Citation	Marketing Start Date	Marketing End Date
DIETARY SUPPLEMENT		12/04/1961	

Supplement Facts

Serving Size : **Serving per Container :**

	Amount Per Serving	% Daily Value
color		
scoring	1	
shape		
size (solid drugs)	19 mm	

Labeler - ProMex LLC (789974388)