

IRIS 60 SECOND APF- sodium fluoride gel

Benco Dental

Disclaimer: This drug has not been found by FDA to be safe and effective, and this labeling has not been approved by FDA. For further information about unapproved drugs, click here.

Active Ingredients:

1.23% Fluoride Ion

Available from 2.09% Sodium Fluoride and Hydrofluoric Acid.

Purpose:

Fluoride Treatment Gel

Indications and usage:

- A stable thixotropic fluoride treatment gel used to help prevent dental decay.
- For Professional Office Use Only. This product is not intended for home or unsupervised consumer use.

Warnings:

- Keep out of reach of children.
- Do not swallow. If product is accidentally swallowed in quantities greater than would normally occur with a treatment gel, seek medical help or contact a Poison Control Center right away.
- Read directions carefully before using.

Dosage and administration:

- Shake well before use. This is a one minute of four minute fluoride gel for in-office patient use. It is normally used as a preventative caries treatment twice a year.
 - After thorough prophylaxis, fill two single or one dual tray, one third full with gel. Air dry teeth and insert trays into the mouth.
 - Instruct patient to bite down lightly but firmly for one minute (80% effectiveness) or four minutes (100% effectiveness).
 - Remove trays. Instruct patient to expectorate any excess gel and not to eat or drink for at least 30 minutes.

Other information:

Do not store above 25°C/77°F. Do not freeze.

Inactive Ingredients:

Citric Acid, FD&C Red #40, Flavor, Magnesium Aluminum Silicate, Phosphoric Acid, Polysorbate 20, Sodium Benzoate, Sodium Saccharin, Titanium Dioxide, Water, Xanthan Gum, Xylitol

Active Ingredients: 1.23% Fluoride Ion Available from 2.09% Sodium Fluoride and Hydrofluoric acid.

Purpose: Fluoride Treatment Gel

Indications and usage:

- A stable thixotropic fluoride treatment gel used to help prevent dental decay.
- For Professional Office Use Only. This product is not intended for home or unsupervised consumer use.

Warnings:

- Keep out of reach of children.
- Do not swallow. If product is accidentally swallowed in quantities greater than would normally occur with a treatment gel, seek medical help or contact a Poison Control Center right away.
- Read directions carefully before using.

Dosage and administration:

Shake well before use. This is a one minute or four minute fluoride gel for in-office patient use. It is normally used as a preventative caries treatment twice a year.

1. After thorough prophylaxis, fill two single or one dual tray, one third full with gel. Air dry teeth and insert trays into the mouth.
2. Instruct patient to bite down lightly but firmly for one minute (80% effectiveness) or four minutes (100% effectiveness).
3. Remove trays. Instruct patient to expectorate any excess gel and not to eat or drink for at least 30 minutes.

Other information:


Do not store above 25°C/77°F. Do not freeze.

Inactive Ingredients: Citric Acid, FD&C Red #40, Flavor, Magnesium Aluminum Silicate, Phosphoric Acid, Polysorbate 20, Sodium Benzoate, Sodium Saccharin, Titanium Dioxide, Water, Xanthan Gum, Xylitol.

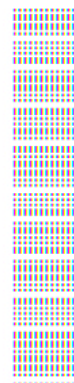
Time to reorder?

Call 1-800-GO-BENCO

Reorder #: [3255-925]

Distributed by

 We deliver success smile after smile.
 800.GO.BENCO • benco.com
 295 CenterPoint Blvd., Pittston, PA 18640

99091751 Rev 05/2016



[3255-925]



IRIS 60 SECOND APF

sodium fluoride gel

Product Information

Product Type	HUMAN PRESCRIPTION DRUG	Item Code (Source)	NDC:66975-054
Route of Administration	DENTAL		

Active Ingredient/Active Moiety

Ingredient Name	Basis of Strength	Strength
SODIUM FLUORIDE (UNII: 8ZYQ1474W7) (FLUORIDE ION - UNII:Q80VPU4080)	FLUORIDE ION	5.6 g in 454 g

Inactive Ingredients

Ingredient Name	Strength
CITRIC ACID MONOHYDRATE (UNII: 2968PHW8QP)	
MAGNESIUM ALUMINUM SILICATE (UNII: 6M3P64V0NC)	
PHOSPHORIC ACID (UNII: E4GA8884NN)	
POLYSORBATE 20 (UNII: 7T1F30V5YH)	
SODIUM BENZOATE (UNII: OJ245FE5EU)	
SACCHARIN SODIUM (UNII: SB8ZUX40TY)	
TITANIUM DIOXIDE (UNII: 15FIX9V2JP)	
WATER (UNII: 059QF0KO0R)	
XANTHAN GUM (UNII: TTV12P4NEE)	
XYLITOL (UNII: VCQ006KQ1E)	
FD&C RED NO. 40 (UNII: WZB9127XOA)	

Product Characteristics

Color	red	Score	
Shape		Size	
Flavor	STRAWBERRY (Summer Strawberry)	Imprint Code	
Contains			

Packaging

#	Item Code	Package Description	Marketing Start Date	Marketing End Date
1	NDC:66975-054-15	454 g in 1 BOTTLE, PLASTIC; Type 0: Not a Combination Product	05/01/2016	

Marketing Information

Marketing Category	Application Number or Monograph Citation	Marketing Start Date	Marketing End Date
unapproved drug other		12/14/2012	

Labeler - Benco Dental (015108087)

Revised: 2/2022

Benco Dental