

# **TIZANIDINE HYDROCHLORIDE - tizanidine hydrochloride capsule**

## **Quality Care Products, LLC**

-----

### **HIGHLIGHTS OF PRESCRIBING INFORMATION**

**These highlights do not include all the information needed to use TIZANIDINE HYDROCHLORIDE CAPSULES safely and effectively. See full prescribing information for TIZANIDINE HYDROCHLORIDE CAPSULES.**

**TIZANIDINE hydrochloride capsules, for oral use**  
**Initial U.S. Approval: 1996**

### **INDICATIONS AND USAGE**

Tizanidine hydrochloride capsules are central alpha-2-adrenergic agonist indicated for the management of spasticity. Because of the short duration of therapeutic effect, treatment with tizanidine hydrochloride capsules should be reserved for those daily activities and times when relief of spasticity is most important. (1)

### **DOSAGE AND ADMINISTRATION**

- Recommended starting dose: 2 mg; dose can be repeated at 6 to 8 hour intervals, up to a maximum of 3 doses in 24 hours (2.1)
- Dosage can be increased by 2 mg to 4 mg per dose, with 1 to 4 days between increases; total daily dose should not exceed 36 mg (2.1)
- Tizanidine pharmacokinetics differs between tablets and capsules, and when taken with or without food. These differences could result in a change in tolerability and control of symptoms (2.1, 12.3)
- To discontinue tizanidine hydrochloride capsules, decrease dose slowly to minimize the risk of withdrawal and rebound hypertension, tachycardia, and hypertonia (2.2)

### **DOSAGE FORMS AND STRENGTHS**

- Capsules: 2 mg, 4 mg or 6 mg (3)

### **CONTRAINDICATIONS**

- Concomitant use with potent inhibitors of CYP1A2, such as fluvoxamine or ciprofloxacin (4, 5.5, 7.1, 7.2)

### **WARNINGS AND PRECAUTIONS**

- Hypotension: monitor for signs and symptoms of hypotension, in particular in patients receiving concurrent antihypertensives; tizanidine hydrochloride should not be used with other  $\alpha_2$ -adrenergic agonists (5.1, 7.7)
- Risk of liver injury: monitor ALTs; discontinue tizanidine hydrochloride if liver injury occurs (5.2)
- Sedation: tizanidine hydrochloride may interfere with everyday activities; sedative effects of tizanidine hydrochloride, alcohol, and other CNS depressants are additive (5.3, 7.5, 7.6)
- Hallucinations: consider discontinuation of tizanidine hydrochloride (5.4)
- Less potent inhibitors of CYP1A2: may cause hypotension, bradycardia, or excessive drowsiness, use caution if tizanidine hydrochloride is used with less potent inhibitors of CYP1A2, e.g., zileuton, other fluoroquinolones, antiarrhythmics, cimetidine, famotidine, oral contraceptives, acyclovir, and ticlopidine (5.5, 7.3, 12.3)
- Renal impairment (creatinine clearance < 25 mL/min): use tizanidine hydrochloride with caution, and monitor closely for dry mouth, somnolence, asthenia and dizziness as indicators of potential overdose (5.7)

### **ADVERSE REACTIONS**

The most common adverse reactions (greater than 2% of 264 patients taking tizanidine and greater than in placebo-treated patients in three multiple dose, placebo-controlled studies) were dry mouth, somnolence, asthenia, dizziness, urinary tract infection, constipation, liver function tests abnormal, vomiting, speech disorder, amblyopia, urinary frequency, flu syndrome, SGPT/ALT increased, dyskinesia, nervousness, pharyngitis, and rhinitis (6.1)

**To report SUSPECTED ADVERSE REACTIONS, contact Jubilant Cadista Pharmaceuticals Inc., at 1-800-313-4623 or FDA at 1-800-FDA-1088 or [www.fda.gov/medwatch](http://www.fda.gov/medwatch)**

### **USE IN SPECIFIC POPULATIONS**

- Pregnancy: Based on animal data, may cause fetal harm (8.1)

- Geriatric use: Tizanidine hydrochloride should be used with caution in elderly patients because clearance is decreased four-fold (8.5)

**See 17 for PATIENT COUNSELING INFORMATION.**

**Revised: 8/2020**

---

## **FULL PRESCRIBING INFORMATION: CONTENTS\***

### **1 INDICATIONS AND USAGE**

### **2 DOSAGE AND ADMINISTRATION**

- 2.1 Dosing Information
- 2.2 Dosing in Patients with Renal Impairment
- 2.3 Dosing in Patients with Hepatic Impairment
- 2.4 Drug Discontinuation

### **3 DOSAGE FORMS AND STRENGTHS**

### **4 CONTRAINDICATIONS**

### **5 WARNINGS AND PRECAUTIONS**

- 5.1 Hypotension
- 5.2 Risk of Liver Injury
- 5.3 Sedation
- 5.4 Hallucinoses/Psychotic-Like Symptoms
- 5.5 Interaction with CYP1A2 Inhibitors
- 5.6 Hypersensitivity Reactions
- 5.7 Increased Risk of Adverse Reactions in Patients with Renal Impairment
- 5.8 Withdrawal Adverse Reactions

### **6 ADVERSE REACTIONS**

- 6.1 Clinical Trials Experience
- 6.2 Post-Marketing Experience

### **7 DRUG INTERACTIONS**

- 7.1 Fluvoxamine
- 7.2 Ciprofloxacin
- 7.3 CYP1A2 Inhibitors other than Fluvoxamine and Ciprofloxacin
- 7.4 Oral Contraceptives
- 7.5 Alcohol
- 7.6 Other CNS Depressants
- 7.7  $\alpha_2$ -adrenergic agonists

### **8 USE IN SPECIFIC POPULATIONS**

- 8.1 Pregnancy
- 8.3 Nursing mothers
- 8.4 Pediatric use
- 8.5 Geriatric use
- 8.6 Impaired Renal Function
- 8.7 Impaired Hepatic Function

### **9 DRUG ABUSE AND DEPENDENCE**

- 9.2 Abuse
- 9.3 Dependence

### **10 OVERDOSAGE**

### **11 DESCRIPTION SECTION**

## **12 CLINICAL PHARMACOLOGY**

12.1 Mechanism of action

## **13 NONCLINICAL TOXICOLOGY**

13.1 Carcinogenesis, Mutagenesis, Impairment of Fertility

## **14 CLINICAL STUDIES SECTION**

## **16 HOW SUPPLIED/STORAGE AND HANDLING**

16.1 Tizanidine Hydrochloride Capsules

## **17 PATIENT COUNSELING INFORMATION**

\* Sections or subsections omitted from the full prescribing information are not listed.

---

## **FULL PRESCRIBING INFORMATION**

### **1 INDICATIONS AND USAGE**

Tizanidine hydrochloride capsules are central alpha-2-adrenergic agonist indicated for the management of spasticity. Because of the short duration of therapeutic effect, treatment with tizanidine hydrochloride capsules should be reserved for those daily activities and times when relief of spasticity is most important [*see Dosage and Administration (2.1)*].

### **2 DOSAGE AND ADMINISTRATION**

#### **2.1 Dosing Information**

Tizanidine hydrochloride capsules may be prescribed with or without food. Once the formulation has been selected and the decision to take with or without food has been made, this regimen should not be altered.

Food has complex effects on tizanidine pharmacokinetics, which differ with the different formulations. Tizanidine hydrochloride capsules and tizanidine tablets are bioequivalent to each other under fasting conditions (more than 3 hours after a meal), but not under fed conditions (within 30 minutes of a meal). These pharmacokinetic differences may result in clinically significant differences when switching administration of tablet and capsules and when switching administration between the fed or fasted state. These changes may result in increased adverse events, or delayed or more rapid onset of activity, depending upon the nature of the switch. For this reason, the prescriber should be thoroughly familiar with the changes in kinetics associated with these different conditions [*see Clinical Pharmacology (12.3)*].

The recommended starting dose is 2 mg. Because the effect of tizanidine hydrochloride peaks at approximately 1 to 2 hours post-dose and dissipates between 3 to 6 hours post-dose, treatment can be repeated at 6 to 8 hour intervals, as needed, to a maximum of three doses in 24 hours.

Dosage can be gradually increased by 2 mg to 4 mg at each dose, with 1 to 4 days between dosage increases, until a satisfactory reduction of muscle tone is achieved. The

total daily dose should not exceed 36 mg. Single doses greater than 16 mg have not been studied.

## **2.2 Dosing in Patients with Renal Impairment**

Tizanidine hydrochloride capsules should be used with caution in patients with renal insufficiency (creatinine clearance < 25 mL/min), as clearance is reduced by more than 50%. In these patients, during titration, the individual doses should be reduced. If higher doses are required, individual doses rather than dosing frequency should be increased [see *Warnings and Precautions (5.7)*].

## **2.3 Dosing in Patients with Hepatic Impairment**

Tizanidine hydrochloride capsules should be used with caution in patients with any hepatic impairment. In these patients, during titration, the individual doses should be reduced. If higher doses are required, individual doses rather than dosing frequency should be increased. Monitoring of aminotransferase levels is recommended for baseline and 1 month after maximum dose is achieved, or if hepatic injury is suspected. [see *Use in Specific Populations (8.7)*]

## **2.4 Drug Discontinuation**

If therapy needs to be discontinued, particularly in patients who have been receiving high doses (20 mg to 36 mg daily) for long periods (9 weeks or more) or who may be on concomitant treatment with narcotics, the dose should be decreased slowly (2 mg to 4 mg per day) to minimize the risk of withdrawal and rebound hypertension, tachycardia, and hypertonia [see *Drug Abuse and Dependence (9.3)*].

## **3 DOSAGE FORMS AND STRENGTHS**

**2 mg:** Blue opaque cap and white opaque body, size '4' hard gelatin capsule, printed radially in black ink with 'C' on the cap and '670' on the body.

**4 mg:** Light blue opaque cap and body, size '3' hard gelatin capsule, printed radially in black ink with 'C' on the cap and '671' on the body.

**6 mg:** Light blue opaque cap and white opaque body, size '2' hard gelatin capsule, printed radially in black ink with 'C' on the cap and '672' on the body.

## **4 CONTRAINDICATIONS**

Tizanidine hydrochloride is contraindicated in patients taking potent inhibitors of CYP1A2, such as fluvoxamine or ciprofloxacin [see *Drug Interactions (7.1, 7.2)*].

## **5 WARNINGS AND PRECAUTIONS**

### **5.1 Hypotension**

Tizanidine is an  $\alpha_2$ -adrenergic agonist that can produce hypotension. Syncope has been reported in the post marketing setting. The chance of significant hypotension may

possibly be minimized by titration of the dose and by focusing attention on signs and symptoms of hypotension prior to dose advancement. In addition, patients moving from a supine to fixed upright position may be at increased risk for hypotension and orthostatic effects.

Monitor for hypotension when tizanidine hydrochloride is used in patients receiving concurrent antihypertensive therapy. It is not recommended that tizanidine hydrochloride be used with other  $\alpha_2$ -adrenergic agonists. Clinically significant hypotension (decreases in both systolic and diastolic pressure) has been reported with concomitant administration of either fluvoxamine or ciprofloxacin and single doses of 4 mg of tizanidine hydrochloride. Therefore, concomitant use of tizanidine hydrochloride with fluvoxamine or with ciprofloxacin, potent inhibitors of CYP1A2, is contraindicated [see *Contraindications (4) and Drug Interactions (7.1, 7.2)*].

## **5.2 Risk of Liver Injury**

Tizanidine hydrochloride may cause hepatocellular liver injury. Tizanidine hydrochloride should be used with caution in patients with any hepatic impairment. Monitoring of aminotransferase levels is recommended for baseline and 1 month after maximum dose is achieved, or if hepatic injury is suspected. [see *Dosage and Administration (2.3) and Use in Specific Populations (8.7)*]

## **5.3 Sedation**

Tizanidine hydrochloride can cause sedation, which may interfere with everyday activity. In the multiple dose studies, the prevalence of patients with sedation peaked following the first week of titration and then remained stable for the duration of the maintenance phase of the study. The CNS depressant effects of tizanidine hydrochloride with alcohol and other CNS depressants (e.g., benzodiazepines, opioids, tricyclic antidepressants) may be additive. Monitor patients who take tizanidine hydrochloride with another CNS depressant for symptoms of excess sedation. [see *Drug Interactions (7.5, 7.6)*]

## **5.4 Hallucinosi s/Psychotic-Like Symptoms**

Tizanidine hydrochloride use has been associated with hallucinations. Formed, visual hallucinations or delusions have been reported in 5 of 170 patients (3%) in two North American controlled clinical studies. Most of the patients were aware that the events were unreal. One patient developed psychosis in association with the hallucinations. One patient among these 5 continued to have problems for at least 2 weeks following discontinuation of tizanidine. Consider discontinuing tizanidine hydrochloride in patients who develop hallucinations.

## **5.5 Interaction with CYP1A2 Inhibitors**

Because of potential drug interactions, tizanidine hydrochloride is contraindicated in patients taking potent CYP1A2 inhibitors, such as fluvoxamine or ciprofloxacin. Adverse reactions such as hypotension, bradycardia, or excessive drowsiness can occur when tizanidine hydrochloride is taken with other CYP1A2 inhibitors, such as zileuton, fluoroquinolones other than ciprofloxacin (which is contraindicated), antiarrhythmics (amiodarone, mexiletine, propafenone), cimetidine, famotidine, oral contraceptives, acyclovir, and ticlopidine). Concomitant use should be avoided unless the necessity for tizanidine hydrochloride therapy is clinically evident. In such a case, use with caution.

*[see Drug Interactions (7.3) and Clinical Pharmacology (12.3)]*

## **5.6 Hypersensitivity Reactions**

Tizanidine hydrochloride can cause anaphylaxis. Signs and symptoms including respiratory compromise, urticaria, and angioedema of the throat and tongue have been reported. Patients should be informed of the signs and symptoms of severe allergic reactions and instructed to discontinue tizanidine hydrochloride and seek immediate medical care should these signs and symptoms occur. *[see Contraindications (4)]*

## **5.7 Increased Risk of Adverse Reactions in Patients with Renal Impairment**

Tizanidine hydrochloride should be used with caution in patients with renal insufficiency (creatinine clearance < 25 mL/min), as clearance is reduced by more than 50%. In these patients, during titration, the individual doses should be reduced. If higher doses are required, individual doses rather than dosing frequency should be increased. These patients should be monitored closely for the onset or increase in severity of the common adverse events (dry mouth, somnolence, asthenia and dizziness) as indicators of potential overdose. *[see Dosage and Administration (2.2) and Use in Specific Populations (8.6)]*

## **5.8 Withdrawal Adverse Reactions**

Withdrawal adverse reactions include rebound hypertension, tachycardia, and hypertonia. To minimize the risk of these reactions, particularly in patients who have been receiving high doses (20 mg to 28 mg daily) for long periods of time (9 weeks or more) or who may be on concomitant treatment with narcotics, the dose should be decreased slowly (2 mg to 4 mg per day). *[see Dosage and Administration (2.2)]*

## **6 ADVERSE REACTIONS**

The following adverse reactions are described elsewhere in other sections of the prescribing information:

- Hypotension *[see Warnings and Precautions (5.1)]*
- Liver Injury *[see Warnings and Precautions (5.2)]*
- Sedation *[see Warnings and Precautions (5.3)]*
- Hallucinoses/Psychotic-Like Symptoms *[see Warnings and Precautions (5.4)]*
- Hypersensitivity Reactions *[see Warnings and Precautions (5.6)]*

### **6.1 Clinical Trials Experience**

Because clinical studies are conducted under widely varying conditions, adverse reaction rates observed in the clinical studies of a drug cannot be directly compared to rates in the clinical studies of another drug and may not reflect the rates observed in clinical practice.

Three double-blind, randomized, placebo controlled-clinical studies were conducted to evaluate the effect of tizanidine on spasticity control. Two studies were conducted in patients with multiple sclerosis and one in patients with spinal cord injury. Each study had a 13-week active treatment period which included a 3-week titration phase to the maximum tolerated dose up to 36 mg/day in three divided doses, a 9-week plateau

phase where the dose of tizanidine was held constant and a 1-week dose tapering. In all, 264 patients received tizanidine and 261 patients received placebo. Across the three studies patient ages ranged from 15-69 years and 51.4 percent were women. The median dose during the plateau phase ranged from 20 mg to 28 mg/day.

The most frequent adverse reactions reported in multiple dose, placebo-controlled clinical studies involving 264 patients with spasticity were dry mouth, somnolence/sedation, asthenia (weakness, fatigue and/or tiredness) and dizziness. Three-quarters of the patients rated the events as mild to moderate and one-quarter of the patients rated the events as being severe. These events appeared to be dose related.

Table 1 lists signs and symptoms that were reported in greater than 2% of patients in three multiple dose, placebo-controlled studies who received tizanidine hydrochloride where the frequency in the tizanidine hydrochloride group was greater than the placebo group. For comparison purposes, the corresponding frequency of the event (per 100 patients) among placebo treated patients is also provided.

**Table 1: Multiple Dose, Placebo-Controlled Studies-Frequent (>2%) Adverse Reactions Reported for Which Tizanidine Tablets Incidence is Greater than Placebo**

| <b>Event</b>               | <b>Placebo<br/>N = 261<br/>%</b> | <b>Tizanidine<br/>Tablet<br/>N = 264<br/>%</b> |
|----------------------------|----------------------------------|--|
| Dry mouth                  | 10                               | 49   |
| Somnolence                 | 10                               | 48   |
| Asthenia*                  | 16                               | 41   |
| Dizziness                  | 4                                | 16   |
| UTI                        | 7                                | 10   |
| Infection                  | 5                                | 6  |
| Constipation               | 1                                | 4  |
| Liver test abnormality     | 2                                | 6  |
| Vomiting                   | 0                                | 3  |
| Speech disorder            | 0                                | 3  |
| Amblyopia (blurred vision) | <1                               | 3  |
| Urinary frequency          | 2                                | 3  |
| Flu syndrome               | 2                                | 3  |
| Dyskinesia                 | 0                                | 3  |
| Nervousness                | <1                               | 3  |
| Pharyngitis                | 1                                | 3  |
| Rhinitis                   | 2                                | 3  |

\*(weakness, fatigue, and/or tiredness)

In the single dose, placebo-controlled study involving 142 patients with spasticity due to multiple sclerosis (Study 1) [see *Clinical Studies (14)*], the patients were specifically asked if they had experienced any of the four most common adverse reactions: dry mouth,

somnolence (drowsiness), asthenia (weakness, fatigue and/or tiredness) and dizziness. In addition, hypotension and bradycardia were observed. The occurrence of these reactions is summarized in Table 2. Other events were, in general, reported at a rate of 2% or less.

**Table 2: Single Dose, Placebo-Controlled Study-Common Adverse Reactions Reported**

| <b>Event</b> | <b>Placebo<br/>N = 48<br/>%</b> | <b>Tizanidine<br/>Tablet, 8 mg,<br/>N = 45<br/>%</b> | <b>Tizanidine<br/>Tablet, 16 mg,<br/>N = 49<br/>%</b> |
|--------------|---------------------------------|--|---|
| Somnolence   | 31                              | 78   | 92  |
| Dry mouth    | 35                              | 76   | 88  |
| Asthenia*    | 40                              | 67   | 78  |
| Dizziness    | 4                               | 22   | 45  |
| Hypotension  | 0                               | 16   | 33  |
| Bradycardia  | 0                               | 2  | 10  |

\*(weakness, fatigue, and/or tiredness)

## 6.2 Post-Marketing Experience

The following adverse reactions have been identified during post approval use of tizanidine hydrochloride. Because these reactions are reported voluntarily from a population of uncertain size, it is not always possible to reliably estimate their frequency or establish a causal relationship to drug exposure.

Certain events, such as somnolence, dry mouth, hypotension, decreased blood pressure, bradycardia, dizziness, weakness or asthenia, muscle spasms, hallucinations, fatigue, liver function test abnormality and hepatotoxicity, have been observed in post marketing and clinical trials and are discussed in previous sections of this document.

The following adverse reactions have been identified as occurring in the post marketing experience of tizanidine hydrochloride. Based on the information provided regarding these reactions, a causal relationship with tizanidine hydrochloride cannot be entirely excluded. The events are listed in order of decreasing clinical significance; severity in the post marketing setting is not reported.

- Stevens Johnson Syndrome
- Anaphylactic Reaction
- Exfoliative Dermatitis
- Ventricular Tachycardia
- Hepatitis
- Convulsion
- Depression
- Arthralgia
- Paresthesia
- Rash
- Tremor



## **7 DRUG INTERACTIONS**

### **7.1 Fluvoxamine**

Concomitant use of fluvoxamine and tizanidine hydrochloride is contraindicated. Changes in pharmacokinetics of tizanidine when administered with fluvoxamine resulted in significantly decreased blood pressure, increased drowsiness, and increased psychomotor impairment. *[see Contraindications (4) and Clinical Pharmacology (12.3)]*

### **7.2 Ciprofloxacin**

Concomitant use of ciprofloxacin and tizanidine hydrochloride is contraindicated. Changes in pharmacokinetics of tizanidine when administered with ciprofloxacin resulted in significantly decreased blood pressure, increased drowsiness, and increased psychomotor impairment. *[see Contraindications (4) and Clinical Pharmacology (12.3)]*

### **7.3 CYP1A2 Inhibitors other than Fluvoxamine and Ciprofloxacin**

Because of potential drug interactions, concomitant use of tizanidine hydrochloride with other CYP1A2 inhibitors, such as zileuton, fluoroquinolones other than strong CYP1A2 inhibitors (which are contraindicated), antiarrhythmics (amiodarone, mexiletine, propafenone, and verapamil), cimetidine, famotidine, oral contraceptives, acyclovir, and ticlopidine) should be avoided. If their use is clinically necessary, therapy should be initiated with 2 mg dose and increased in 2 mg to 4 mg steps daily based on patient response to therapy. If adverse reactions such as hypotension, bradycardia, or excessive drowsiness occur, reduce or discontinue tizanidine hydrochloride therapy. *[see Warnings and Precautions (5.5) and Clinical Pharmacology (12.3)]*

### **7.4 Oral Contraceptives**

Concomitant use of tizanidine hydrochloride with oral contraceptives is not recommended. However, if concomitant use is clinically necessary, initiate tizanidine hydrochloride with a single 2 mg dose and increase in 2 mg to 4 mg steps daily based on patient response to therapy. If adverse reactions such as hypotension, bradycardia, or excessive drowsiness occur, reduce or discontinue tizanidine hydrochloride therapy. *[see Clinical Pharmacology (12.3)]*

### **7.5 Alcohol**

Alcohol increases the overall amount of drug in the bloodstream after a dose of tizanidine hydrochloride. This was associated with an increase in adverse reactions of tizanidine hydrochloride. The CNS depressant effects of tizanidine hydrochloride and alcohol are additive. *[see Clinical Pharmacology (12.3)]*

### **7.6 Other CNS Depressants**

The sedative effects of tizanidine hydrochloride with CNS depressants (e.g., benzodiazepines, opioids, tricyclic antidepressants) may be additive. Monitor patients who take tizanidine hydrochloride with another CNS depressant for symptoms of excess sedation. *[see Clinical Pharmacology (12.3)]*

## **7.7 $\alpha_2$ -adrenergic agonists**

Because hypotensive effects may be cumulative, it is not recommended that tizanidine hydrochloride be used with other  $\alpha_2$ -adrenergic agonists. [see *Warnings and Precautions (5.1)*]

## **8 USE IN SPECIFIC POPULATIONS**

### **8.1 Pregnancy**

#### **Pregnancy Category C**

Tizanidine hydrochloride has not been studied in pregnant women. Tizanidine hydrochloride should be given to pregnant women only if the benefit outweighs the risk to the unborn fetus. Reproduction studies performed in rats at a dose of 3 mg/kg, equal to the maximum recommended human dose on a mg/m<sup>2</sup> basis, and in rabbits at 30 mg/kg, 16 times the maximum recommended human dose on a mg/m<sup>2</sup> basis, did not show evidence of teratogenicity. Tizanidine at doses that are equal to and up to 8 times the maximum recommended human dose on a mg/m<sup>2</sup> basis increased gestation duration in rats. Prenatal and postnatal pup loss was increased and developmental retardation occurred. Post-implantation loss was increased in rabbits at doses of 1 mg/kg or greater, equal to or greater than 0.5 times the maximum recommended human dose on a mg/m<sup>2</sup> basis.

### **8.3 Nursing mothers**

It is not known whether this drug is excreted in human milk. Because many drugs are excreted in human milk, caution should be exercised when tizanidine hydrochloride is administered to a nursing woman.

### **8.4 Pediatric use**

Safety and effectiveness in pediatric patients have not been established.

### **8.5 Geriatric use**

Tizanidine hydrochloride is known to be substantially excreted by the kidney, and the risk of adverse reactions to this drug may be greater in patients with impaired renal function. Because elderly patients are more likely to have decreased renal function, care should be taken in dose selection, and it may be useful to monitor renal function. Clinical studies of tizanidine hydrochloride did not include sufficient numbers of subjects aged 65 and over to determine whether they respond differently than younger subjects. Cross-study comparison of pharmacokinetic data following single dose administration of 6 mg tizanidine hydrochloride showed that younger subjects cleared the drug four times faster than the elderly subjects. In elderly patients with renal insufficiency (creatinine clearance <25 mL/min), tizanidine clearance is reduced by more than 50% compared to healthy elderly subjects; this would be expected to lead to a longer duration of clinical effect. During titration, the individual doses should be reduced. If higher doses are required, individual doses rather than dosing frequency should be increased. Monitor elderly patients because they may have an increased risk for adverse reactions associated with tizanidine hydrochloride.

## **8.6 Impaired Renal Function**

Tizanidine hydrochloride is known to be substantially excreted by the kidney, and the risk of adverse reactions to this drug may be greater in patients with impaired renal function. In patients with renal insufficiency (creatinine clearance < 25 mL/min) clearance was reduced by more than 50%. In these patients, during titration, the individual doses should be reduced. If higher doses are required, individual doses rather than dosing frequency should be increased. These patients should be monitored closely for the onset or increase in severity of the common adverse events (dry mouth, somnolence, asthenia and dizziness) as indicators of potential overdose. [see *Dosage and Administration (2.2)*, *Warnings and Precautions (5.7)* and *Clinical Pharmacology (12.3)*]

## **8.7 Impaired Hepatic Function**

The influence of hepatic impairment on the pharmacokinetics of tizanidine has not been evaluated. Because tizanidine is extensively metabolized in the liver, hepatic impairment would be expected to have significant effects on pharmacokinetics of tizanidine. [see *Dosing and Administration (2.3)*, *Warnings and Precautions (5.2)*, and *Clinical Pharmacology (12.3)*].

## **9 DRUG ABUSE AND DEPENDENCE**

### **9.2 Abuse**

Abuse potential was not evaluated in human studies. Rats were able to distinguish tizanidine from saline in a standard discrimination paradigm, after training, but failed to generalize the effects of morphine, cocaine, diazepam, or phenobarbital to tizanidine.

### **9.3 Dependence**

Tizanidine is closely related to clonidine, which is often abused in combination with narcotics and is known to cause symptoms of rebound upon abrupt withdrawal. Three cases of rebound symptoms on sudden withdrawal of tizanidine have been reported. The case reports suggest that these patients were also misusing narcotics. Withdrawal symptoms included hypertension, tachycardia, hypertonia, tremor, and anxiety. Withdrawal symptoms are more likely to occur in cases where high doses are used, especially for prolonged periods, or with concomitant use of narcotics. If therapy needs to be discontinued, the dose should be decreased slowly to minimize the risk of withdrawal symptoms [see *Dosage and Administration (2.2)*].

Monkeys were shown to self-administer tizanidine in a dose-dependent manner, and abrupt cessation of tizanidine produced transient signs of withdrawal at doses > 35 times the maximum recommended human dose on a mg/m<sup>2</sup> basis. These transient withdrawal signs (increased locomotion, body twitching, and aversive behavior toward the observer) were not reversed by naloxone administration.

## **10 OVERDOSAGE**

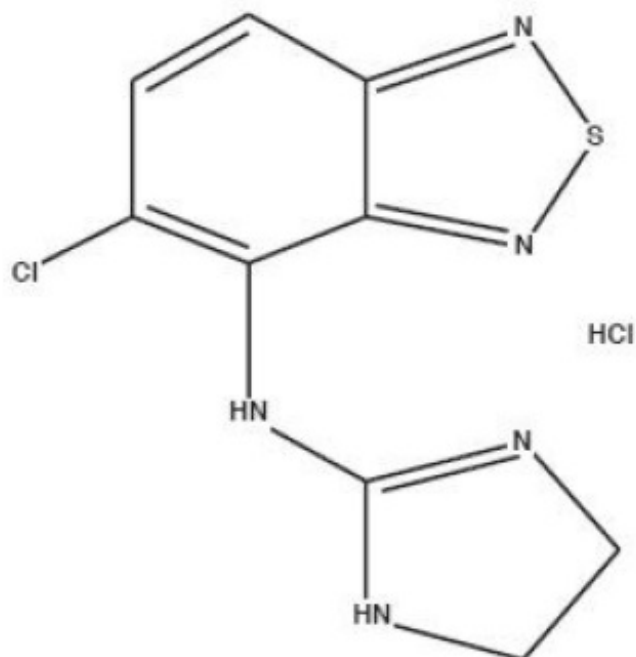
A review of the safety surveillance database revealed cases of intentional and accidental tizanidine hydrochloride overdose. Some of the cases resulted in fatality and many of

the intentional overdoses were with multiple drugs including CNS depressants. The clinical manifestations of tizanidine overdose were consistent with its known pharmacology. In the majority of cases a decrease in sensorium was observed including lethargy, somnolence, confusion and coma. Depressed cardiac function is also observed including most often bradycardia and hypotension. Respiratory depression is another common feature of tizanidine overdose.

Should overdose occur, basic steps to ensure the adequacy of an airway and the monitoring of cardiovascular and respiratory systems should be undertaken. Tizanidine is a lipid-soluble drug, which is only slightly soluble in water and methanol. Therefore, dialysis is not likely to be an efficient method of removing drug from the body. In general, symptoms resolve within one to three days following discontinuation of tizanidine and administration of appropriate therapy. Due to the similar mechanism of action, symptoms and management of tizanidine overdose are similar to that following clonidine overdose. For the most recent information concerning the management of overdose, contact a poison control center.

## 11 DESCRIPTION SECTION

Tizanidine hydrochloride is central alpha<sub>2</sub>-adrenergic agonist. Tizanidine HCl USP is a almost white to slightly yellow, crystalline powder. Tizanidine is slightly soluble in water and methanol. Its chemical name is 5-chloro-4-(2-imidazolylamino)-2,1,3-benzothiazole monohydrochloride. Tizanidine's molecular formula is C<sub>9</sub>H<sub>8</sub>ClN<sub>5</sub>S·HCl, its molecular weight is 290.2 and its structural formula is:



Tizanidine hydrochloride capsules are supplied as 2 mg , 4 mg, and 6 mg capsules for oral administration. Tizanidine hydrochloride capsules contain the active ingredient, tizanidine hydrochloride USP (2.29 mg equivalent to 2 mg tizanidine base, 4.58 mg equivalent to 4 mg tizanidine base, and 6.87 mg equivalent to 6 mg tizanidine base), and the inactive ingredients, anhydrous lactose, FD&C blue #2, gelatin, methacrylic acid copolymer, stearic acid and titanium dioxide.

The imprinting ink contains ferric oxide black, potassium hydroxide, propylene glycol and shellac.

## 12 CLINICAL PHARMACOLOGY

### 12.1 Mechanism of action

Tizanidine is a central alpha-2-adrenergic receptor agonist and presumably reduces spasticity by increasing presynaptic inhibition of motor neurons. The effects of tizanidine are greatest on polysynaptic pathways. The overall effect of these actions is thought to reduce facilitation of spinal motor neurons.

### 12.3 PHARMACOKINETICS SECTION

#### Absorption and Distribution

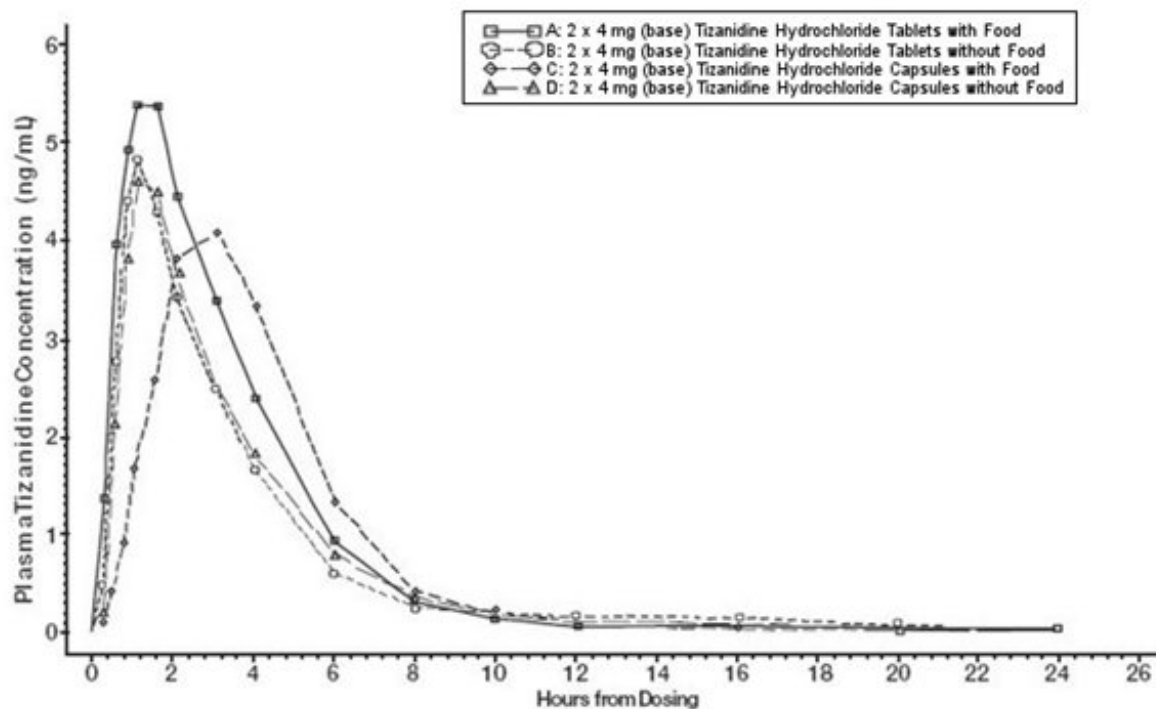
Following oral administration, tizanidine is essentially completely absorbed. The absolute oral bioavailability of tizanidine is approximately 40% (CV = 24%), due to extensive first-pass hepatic metabolism. Tizanidine is extensively distributed throughout the body with a mean steady state volume of distribution of 2.4 L/kg (CV = 21%) following intravenous administration in healthy adult volunteers. Tizanidine is approximately 30% bound to plasma proteins.

#### Differences between Tizanidine Hydrochloride Capsules and Tizanidine Tablets

Tizanidine hydrochloride capsules and tizanidine tablets are bioequivalent to each other under fasting conditions, but not under fed conditions. A single dose of either two 4 mg tablets or two 4 mg capsules was administered under fed and fasting conditions in an open label, four period, randomized crossover study in 96 human volunteers, of whom 81 were eligible for the statistical analysis. Following oral administration of either the tablet or capsule (in the fasted state), peak plasma concentrations of tizanidine occurred 1.0 hours after dosing with a half-life of approximately 2 hours. When two 4 mg tablets were administered with food, the mean maximal plasma concentration was increased by approximately 30%, and the median time to peak plasma concentration was increased by 25 minutes, to 1 hour and 25 minutes. In contrast, when two 4 mg capsules were administered with food, the mean maximal plasma concentration was decreased by 20%, the median time to peak plasma concentration was increased 2 to 3 hours. Consequently, the mean C<sub>max</sub> for the capsule when administered with food is approximately 66% the C<sub>max</sub> for the tablet when administered with food.

Food also increased the extent of absorption for both the tablets and capsules. The increase with the tablet (~30%) was significantly greater than with the capsule (~10%). Consequently when each was administered with food, the amount absorbed from the capsule was about 80% of the amount absorbed from the tablet. Administration of the capsule contents sprinkled on applesauce was not bioequivalent to administration of an intact capsule under fasting conditions. Administration of the capsule contents on applesauce resulted in a 15%–20% increase in C<sub>max</sub> and AUC of tizanidine and a 15 minute decrease in the median lag time and time to peak concentration compared to administration of an intact capsule while fasting.

Figure 1: Mean Tizanidine Concentration vs. Time Profiles For Tizanidine Tablets and Capsules (2 × 4 mg) Under Fasted and Fed Conditions



## Metabolism and Excretion

Tizanidine has linear pharmacokinetics over the doses studied in clinical development (1 mg to 20 mg). Tizanidine has a half-life of approximately 2.5 hours (CV=33%).

Approximately 95% of an administered dose is metabolized. The primary cytochrome P450 isoenzyme involved in tizanidine metabolism is CYP1A2. Tizanidine metabolites are not known to be active; their half-lives range from 20 to 40 hours.

Following single and multiple oral dosing of <sup>14</sup>C-tizanidine, an average of 60% and 20% of total radioactivity was recovered in the urine and feces, respectively.

## Special Populations

### Age Effects

No specific pharmacokinetic study was conducted to investigate age effects. Cross study comparison of pharmacokinetic data following single dose administration of 6 mg tizanidine hydrochloride showed that younger subjects cleared the drug four times faster than the elderly subjects. Tizanidine hydrochloride has not been evaluated in children. [see Use in Specific Populations (8.4, 8.5)]

### Hepatic Impairment

The influence of hepatic impairment on the pharmacokinetics of tizanidine has not been evaluated. Because tizanidine is extensively metabolized in the liver, hepatic impairment would be expected to have significant effects on pharmacokinetics of tizanidine.

Tizanidine hydrochloride is not recommended in this patient population [see Use in Specific Populations (8.7)]

### Renal Impairment

Tizanidine clearance is reduced by more than 50% in elderly patients with renal insufficiency (creatinine clearance < 25 mL/min) compared to healthy elderly subjects; this would be expected to lead to a longer duration of clinical effect. Tizanidine hydrochloride should be used with caution in renally impaired patients [see Warnings and Precautions (5.7) and Use in Specific Populations (8.6)].

**Gender Effects** No specific pharmacokinetic study was conducted to investigate gender

effects. Retrospective analysis of pharmacokinetic data, however, following single and multiple dose administration of 4 mg tizanidine hydrochloride showed that gender had no effect on the pharmacokinetics of tizanidine.

Race Effects Pharmacokinetic differences due to race have not been studied.

## Drug Interactions

### CYP1A2 Inhibitors

The interaction between tizanidine hydrochloride and either fluvoxamine or ciprofloxacin is most likely due to inhibition of CYP1A2 by fluvoxamine or ciprofloxacin. The effect of fluvoxamine on the pharmacokinetics of a single 4 mg dose of tizanidine hydrochloride was studied in 10 healthy subjects. The C<sub>max</sub>, AUC, and half-life of tizanidine increased by 12-fold, 33-fold, and 3-fold, respectively. The effect of ciprofloxacin on the pharmacokinetics of a single 4 mg dose of tizanidine hydrochloride was studied in 10 healthy subjects. The C<sub>max</sub> and AUC of tizanidine increased by 7-fold and 10-fold, respectively. [see Contraindications (4)]

Although there have been no clinical studies evaluating the effects of other CYP1A2 inhibitors on tizanidine, other CYP1A2 inhibitors, such as zileuton, other fluoroquinolones, antiarrhythmics (amiodarone, mexiletine, propafenone and verapamil), cimetidine, famotidine, oral contraceptives, acyclovir and ticlopidine, may also lead to substantial increases in tizanidine blood concentrations [see Warnings and Precautions (5.5)].

In vitro studies of cytochrome P450 isoenzymes using human liver microsomes indicate that neither tizanidine nor the major metabolites are likely to affect the metabolism of other drugs metabolized by cytochrome P450 isoenzymes.

### Oral Contraceptives

No specific pharmacokinetic study was conducted to investigate interaction between oral contraceptives and tizanidine hydrochloride. Retrospective analysis of population pharmacokinetic data following single and multiple dose administration of 4 mg tizanidine hydrochloride, however, showed that women concurrently taking oral contraceptives had 50% lower clearance of tizanidine compared to women not on oral contraceptives [see Warnings and Precautions (5.5)].

### Acetaminophen

Tizanidine delayed the T<sub>max</sub> of acetaminophen by 16 minutes. Acetaminophen did not affect the pharmacokinetics of tizanidine.

### Alcohol

Alcohol increased the AUC of tizanidine by approximately 20%, while also increasing its C<sub>max</sub> by approximately 15%. This was associated with an increase in side effects of tizanidine. The CNS depressant effects of tizanidine and alcohol are additive.

## 13 NONCLINICAL TOXICOLOGY

### 13.1 Carcinogenesis, Mutagenesis, Impairment of Fertility

#### Carcinogenesis

Tizanidine was administered to mice for 78 weeks at oral doses up to 16 mg/kg/day, which is 2 times the maximum recommended human dose (MRHD) on a mg/m<sup>2</sup> basis. Tizanidine was administered to rats for 104 weeks at oral doses up to 9 mg/kg/day,

which is 2.5 times the MRHD on a mg/m<sup>2</sup> basis. There was no increase in tumors in either species.

### **Mutagenesis**

Tizanidine was negative in *in vitro* (bacterial reverse mutation [Ames], mammalian gene mutation, and chromosomal aberration test in mammalian cells) and *in vivo* (bone marrow micronucleus, and cytogenetics) assay.

### **Impairment of fertility**

Oral administration of tizanidine resulted in reduced fertility in male and female rats following doses of 30 and 10 mg/kg/day, respectively. No effect on fertility was observed at doses of 10 (male) and 3 (female) mg/kg/day, which are approximately 8 and 3 times, respectively, the MRHD on a mg/m<sup>2</sup> basis).

## **14 CLINICAL STUDIES SECTION**

Tizanidine's capacity to reduce increased muscle tone associated with spasticity was demonstrated in two adequate and well controlled studies in patients with multiple sclerosis or spinal cord injury (Studies 1 and 2).

### **Single-Dose Study in Patients with Multiple Sclerosis with Spasticity**

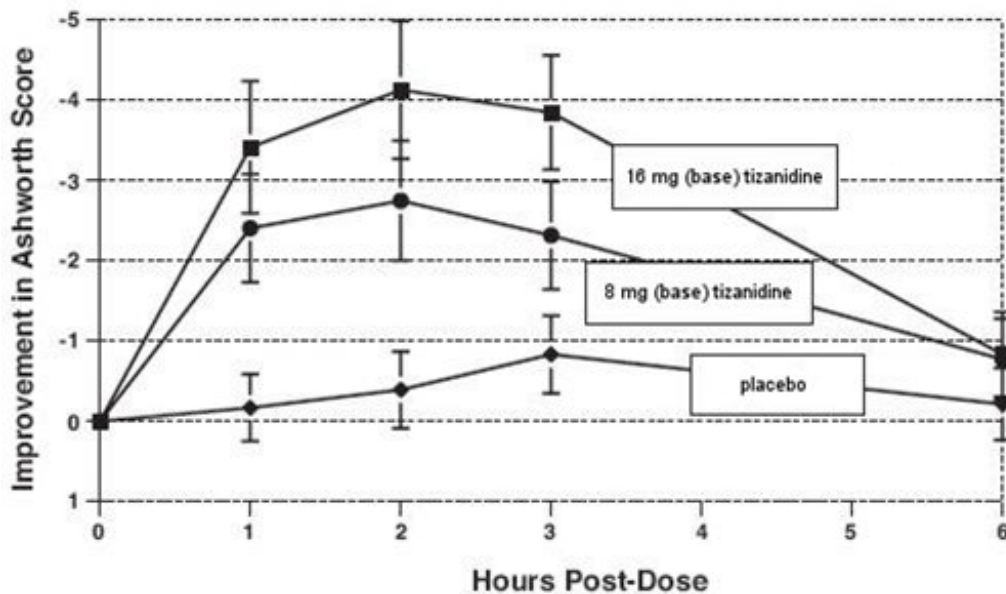
In Study 1, patients with multiple sclerosis were randomized to receive single oral doses of drug or placebo. Patients and assessors were blind to treatment assignment and efforts were made to reduce the likelihood that assessors would become aware indirectly of treatment assignment (e.g., they did not provide direct care to patients and were prohibited from asking questions about side effects). In all, 140 patients received placebo, 8 mg or 16 mg of tizanidine hydrochloride.

Response was assessed by physical examination; muscle tone was rated on a 5 point scale (Ashworth score), with a score of 0 used to describe normal muscle tone. A score of 1 indicated a slight spastic catch while a score of 2 indicated more marked muscle resistance. A score of 3 was used to describe considerable increase in tone, making passive movement difficult. A muscle immobilized by spasticity was given a score of 4. Spasm counts were also collected.

Assessments were made at 1, 2, 3 and 6 hours after treatment. A statistically significant reduction of the Ashworth score for tizanidine hydrochloride compared to placebo was detected at 1, 2 and 3 hours after treatment. Figure 2 below shows a comparison of the mean change in muscle tone from baseline as measured by the Ashworth scale. The greatest reduction in muscle tone was 1 to 2 hours after treatment. By 6 hours after treatment, muscle tone in the 8 and 16 mg tizanidine hydrochloride groups was indistinguishable from muscle tone in placebo treated patients. Within a given patient, improvement in muscle tone was correlated with plasma concentration. Plasma concentrations were variable from patient to patient at a given dose. Although 16 mg produced a larger effect, adverse events including hypotension were more common and more severe than in the 8 mg group. There were no differences in the number of spasms occurring in each group.

Figure 2: Single Dose Study—Mean Change in Muscle Tone from Baseline as Measured by the Ashworth Scale  $\pm$  95% Confidence Interval (A Negative Ashworth Score Signifies an Improvement in Muscle Tone from Baseline)





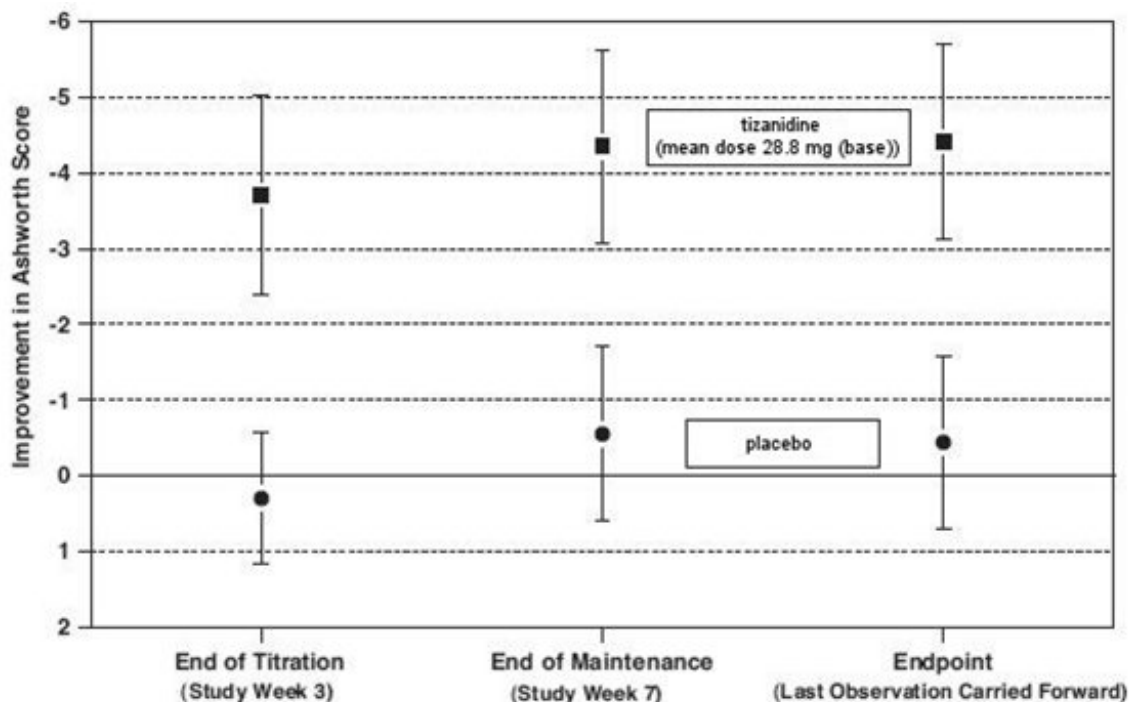
### Seven-Week Study in Patients with Spinal Cord Injury with Spasticity

In a 7-week study (Study 2), 118 patients with spasticity secondary to spinal cord injury were randomized to either placebo or tizanidine hydrochloride. Steps similar to those taken in the first study were employed to ensure the integrity of blinding.

Patients were titrated over 3 weeks up to a maximum tolerated dose or 36 mg daily given in three unequal doses (e.g., 10 mg given in the morning and afternoon and 16 mg given at night). Patients were then maintained on their maximally tolerated dose for 4 additional weeks (i.e., maintenance phase). Throughout the maintenance phase, muscle tone was assessed on the Ashworth scale within a period of 2.5 hours following either the morning or afternoon dose. The number of daytime spasms was recorded daily by patients.

At endpoint (the protocol-specified time of outcome assessment), there was a statistically significant reduction in muscle tone and frequency of spasms in the tizanidine hydrochloride treated group compared to placebo. The reduction in muscle tone was not associated with a reduction in muscle strength (a desirable outcome) but also did not lead to any consistent advantage of tizanidine hydrochloride treated patients on measures of activities of daily living. Figure 3 below shows a comparison of the mean change in muscle tone from baseline as measured by the Ashworth scale.

Figure 3: Seven Week Study—Mean Change in Muscle Tone 0.5–2.5 Hours After Dosing as Measured by the Ashworth Scale  $\pm$  95% Confidence Interval (A Negative Ashworth Score Signifies an Improvement in Muscle Tone from Baseline)



## 16 HOW SUPPLIED/STORAGE AND HANDLING

### 16.1 Tizanidine Hydrochloride Capsules

Tizanidine hydrochloride capsules are available in three strengths as two-piece hard gelatin capsules containing tizanidine hydrochloride USP 2.29 mg, 4.58 mg and 6.87 mg, equivalent to 2 mg, 4 mg and 6 mg tizanidine base.

Tizanidine Hydrochloride Capsules are supplied as:

2 mg: The capsules have blue opaque cap and white opaque body, size '4' hard gelatin, printed radially in black ink with 'C' on the cap and '670' on the body.

4 mg: The capsules have light blue opaque cap and body, size '3' hard gelatin, printed radially in black ink with 'C' on the cap and '671' on the body.

6 mg: The capsules have light blue opaque cap and white opaque body, size '2' hard gelatin, printed radially in black ink with 'C' on the cap and '672' on the body.

55700-865-30

Store at 20° to 25°C (68° to 77°F); excursions permitted to 15° to 30°C (59° to 86°F) [See USP Controlled Room Temperature].

Dispense in a tight, light-resistant container [see USP].

Dispense in containers with child resistant closure.

## 17 PATIENT COUNSELING INFORMATION

### Serious Drug Interactions

Advise patients they should not take tizanidine hydrochloride if they are taking fluvoxamine or ciprofloxacin because of the increased risk of serious adverse reactions including severe lowering of blood pressure and sedation. Instruct patients to inform their physicians or pharmacists when they start or stop taking any medication because of the risks associated with interaction between tizanidine hydrochloride and other medicines.

### Tizanidine Hydrochloride Dosing

Tell patients to take tizanidine hydrochloride exactly as prescribed (consistently either with or without food) and not to switch between tablets and capsules. Inform patients that they should not take more tizanidine hydrochloride than prescribed because of the risk of adverse events at single doses greater than 8 mg or total daily doses greater than 36 mg. Tell patients that they should not suddenly discontinue tizanidine hydrochloride, because rebound hypertension and tachycardia may occur.

### Effects of Tizanidine Hydrochloride

Warn patients that they may experience hypotension and to be careful when changing from a lying or sitting to a standing position. Tell patients that tizanidine hydrochloride may cause them to become sedated or somnolent and they should be careful when performing activities that require alertness, such as driving a vehicle or operating machinery. Tell patients that the sedation may be additive when tizanidine hydrochloride is taken in conjunction with drugs (baclofen, benzodiazepines) or substances (e.g., alcohol) that act as CNS depressants. Remind patients that if they depend on their spasticity to sustain posture and balance in locomotion, or whenever spasticity is utilized to obtain increased function, that tizanidine hydrochloride decreases spasticity and caution should be used.

All brands mentioned are trademarks of their respective owners and are not trademarks of Jubilant Generics Limited.

### **Rx Only**

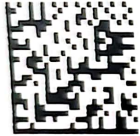
#### **Manufactured by:**

Jubilant Generics Limited  
Roorkee-247661, India

#### **Marketed by:**

Jubilant Cadista Pharmaceuticals Inc.  
Salisbury, MD-21801, USA

**Revised: 08/2017**



See Full Prescribing Information Store at 68 to 77 degrees F.

Holland, OH 43528

## Tizanidine Hydrochloride 6 mg

GTIN: 00355700865306

#30 Capsules

NDC: 55700-865-30

Serial:

Rx only

Lot:

Each capsule contains Tizanidine

EXP: //

Mfr by: Jubilant Generics Ltd., Roorkee-247661, India

Keep all medication out of reach of children

Marketed by: Jubilant Cadista Pharmaceuticals Inc., Salisbury, MD 21801, USA



## TIZANIDINE HYDROCHLORIDE

tizanidine hydrochloride capsule

### Product Information

|                                |                         |                           |                              |
|--------------------------------|-------------------------|---------------------------|------------------------------|
| <b>Product Type</b>            | HUMAN PRESCRIPTION DRUG | <b>Item Code (Source)</b> | NDC:55700-865(NDC:59746-672) |
| <b>Route of Administration</b> | ORAL                    |                           |                              |

### Active Ingredient/Active Moiety

| Ingredient Name  | Basis of Strength | Strength |
|--|-------------------|----------|
| Tizanidine (UNII: 6AI06C00GW) (Tizanidine - UNII:6AI06C00GW) | Tizanidine        | 6 mg     |

### Inactive Ingredients

| Ingredient Name                        | Strength |
|--|----------|
| Anhydrous Lactose (UNII: 3SY5LH9PMK)   |          |
| Gelatin (UNII: 2G86QN327L)             |          |
| Methacrylic Acid (UNII: 1CS02G8656)    |          |
| Stearic Acid (UNII: 4ELV7Z65AP)        |          |
| Ethyl Acrylate (UNII: 71E6178C9T)      |          |
| Fd&c Blue No. 2 (UNII: L06K8R7DQK)     |          |
| Ferrosoferric Oxide (UNII: XM0M87F357) |          |
| Potassium Hydroxide (UNII: WZH3C48M4T) |          |
| Propylene Glycol (UNII: 6DC9Q167V3)    |          |
| Shellac (UNII: 46N107B71O)             |          |
| Titanium Dioxide (UNII: 15FIX9V2JP)    |          |

### Product Characteristics

|              |  |              |          |
|--------------|--|--------------|----------|
| <b>Color</b> | BLUE (blue opaque cap) , WHITE (white opaque body) | <b>Score</b> | no score |
| <b>Shape</b> | CAPSULE  | <b>Size</b>  | 14mm     |

| <b>Flavor</b>                |  | <b>Imprint Code</b>                               | C;672                |                    |
|------------------------------|--|---|----------------------|--------------------|
| <b>Contains</b>              |  |   |                      |                    |
| <b>Packaging</b>             |  |   |                      |                    |
| #                            | Item Code                                | Package Description                               | Marketing Start Date | Marketing End Date |
| 1                            | NDC:55700-865-30                         | 30 in 1 BOTTLE; Type 0: Not a Combination Product | 05/28/2020           |                    |
| <b>Marketing Information</b> |  |   |                      |                    |
| Marketing Category           | Application Number or Monograph Citation | Marketing Start Date                              | Marketing End Date   |                    |
| ANDA                         | ANDA209605                               | 05/28/2020  |                      |                    |

**Labeler** - Quality Care Products, LLC (831276758)

| <b>Establishment</b>       |         |           |                     |
|----------------------------|---------|-----------|---------------------|
| Name                       | Address | ID/FEI    | Business Operations |
| Quality Care Products, LLC |         | 831276758 | repack(55700-865)   |

Revised: 8/2022

Quality Care Products, LLC