

ORBIVAN- butalbital, acetaminophen, and caffeine capsule
Atley Pharmaceuticals, Inc.

Butalbital, Acetaminophen, and Caffeine Capsules
Rx only

DESCRIPTION

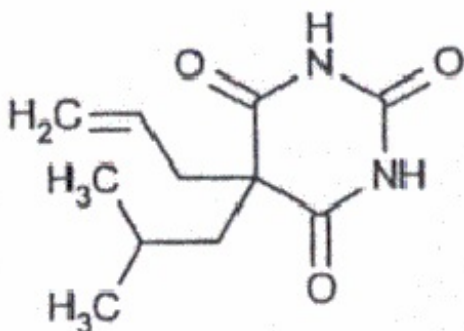
ORBIVAN™ Butalbital, Acetaminophen and Caffeine Capsules USP are supplied in hard-gelatin capsule form for oral administration.

Each capsule contains the following active ingredients:

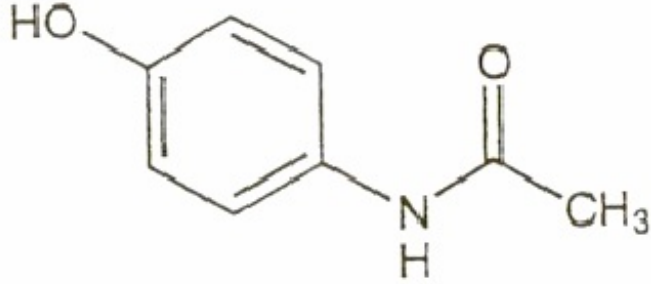
Butalbital USP.....50 mg
Acetaminophen USP.....300 mg
Caffeine USP.....40 mg

Inactive Ingredients: sodium lauryl sulfate, talc, microcrystalline cellulose, stearic acid, d&c yellow # 10, fd&c red#40, titanium dioxide, fd&c blue#1, fd&c yellow #6, gelatin.

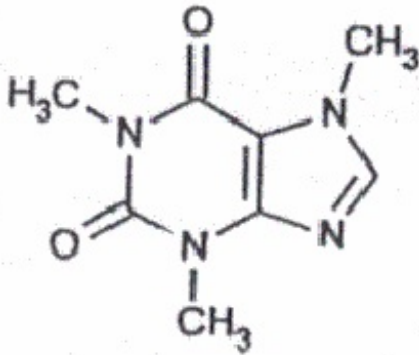
Butalbital (5-allyl-5-isobutylbarbituric acid), is a short to intermediate-acting barbiturate of molecular weight 212.25. It has the following structural formula:



Acetaminophen (4'-hydroxyacetanilide), is a non-opiate, non-salicylate analgesic and antipyretic of molecular weight 151.16. It has the following structural formula:



Caffeine (1,3,7-trimethylxanthine), is a central nervous system stimulant of molecular weight 194.19. It has the following structural formula:



CLINICAL PHARMACOLOGY

This combination drug product is intended as a treatment for tension headache.

It consists of a fixed combination of butalbital, acetaminophen, and caffeine. The role each component plays in the relief of the complex of symptoms known as tension headache is incompletely understood.

Pharmacokinetics

The behavior of the individual components is described below.

Butalbital

Butalbital is well absorbed from the gastrointestinal tract and is expected to distribute to most tissues in the body. Barbiturates in general may appear in breast milk and readily cross the placental barrier. They are bound to plasma and tissue proteins to a varying degree and binding increases directly as a function of lipid solubility.

Elimination of butalbital is primarily via the kidney (59% to 88% of the dose) as unchanged drug or metabolites. The plasma half-life is about 35 hours. Urinary excretion products include parent drug (about 3.6% of the dose), 5-isobutyl-5-(2, 3-dihydroxypropyl) barbituric acid (about 24% of the dose), 5-allyl-5(3-hydroxy-2-methyl-1-propyl) barbituric acid (about 4.8% of the dose), products with the barbituric acid ring hydrolyzed with excretion of urea (about 14% of the dose), as well as unidentified materials. Of the material excreted in the urine, 32% is conjugated.

The *in vitro* plasma protein binding of butalbital is 45% over the concentration range of 0.5-20 mcg/mL. This falls within the range of plasma protein binding (20%-45%) reported with other barbiturates such as phenobarbital, pentobarbital, and secobarbital sodium. The plasma-to-blood concentration ratio was almost unity, indicating that there is no preferential distribution of butalbital into either plasma or blood cells.

See **OVERDOSAGE** for toxicity information.

Acetaminophen

Acetaminophen is rapidly absorbed from the gastrointestinal tract and is distributed throughout most body tissues. The plasma half-life is 1.25 to 3 hours, but may be increased by liver damage and following overdosage. Elimination of acetaminophen is principally by liver metabolism (conjugation) and subsequent renal excretion of metabolites. Approximately 85% of an oral dose appears in the urine within 24 hours of administration, most as the glucuronide conjugate, with small amounts of other conjugates and unchanged drug.

See **OVERDOSAGE** for toxicity information.

Caffeine

Like most xanthines, caffeine is rapidly absorbed and distributed in all body tissues and fluids, including the CNS, fetal tissues, and breast milk.

Caffeine is cleared through metabolism and excretion in the urine. The plasma half-life is about 3 hours. Hepatic biotransformation prior to excretion results in about equal amounts of 1-methylxanthine and 1-methyluric acid. Of the 70% of the dose that is recovered in the urine, only 3% is unchanged drug.

See **OVERDOSAGE** for toxicity information.

INDICATIONS AND USAGE

ORBIVAN™ Butalbital, Acetaminophen and Caffeine capsules are indicated for the relief of the symptom complex of tension (or muscle contraction) headache.

Evidence supporting the efficacy and safety of this combination product in the treatment of multiple recurrent headaches is unavailable. Caution in this regard is required because butalbital is habit-forming and potentially abusable.

CONTRAINDICATIONS

This product is contraindicated under the following conditions:

- Hypersensitivity or intolerance to any component of this product
- Patients with porphyria.

WARNINGS

Butalbital is habit-forming and potentially abusable. Consequently, the extended use of this product is

not recommended.

PRECAUTIONS

General

ORBIVAN™ Butalbital, acetaminophen, and caffeine capsules should be prescribed with caution in certain special-risk patients, such as the elderly or debilitated, and those with severe impairment of renal or hepatic function, or acute abdominal conditions.

Information for Patients

This product may impair mental and/or physical abilities required for the performance of potentially hazardous tasks such as driving a car or operating machinery. Such tasks should be avoided while taking this product.

Alcohol and other CNS depressants may produce an additive CNS depression when taken with this combination product, and should be avoided.

Butalbital may be habit-forming. Patients should take the drug only for as long as it is prescribed, in the amounts prescribed, and no more frequently than prescribed.

For information on use in geriatric patients, see **PRECAUTIONS/Geriatric Use**.

Laboratory Tests

In patients with severe hepatic or renal disease, effects of therapy should be monitored with serial liver and/or renal function tests.

Drug Interactions

The CNS effects of butalbital may be enhanced by monoamine oxidase (MAO) inhibitors.

Butalbital, acetaminophen, and caffeine may enhance the effects of: other narcotic analgesics, alcohol, general anesthetics, tranquilizers such as chlordiazepoxide, sedative-hypnotics, or other CNS depressants, causing increased CNS depression.

Drug/Laboratory Test Interactions

Acetaminophen may produce false-positive test results for urinary 5-hydroxyindoleacetic acid.

Carcinogenesis, Mutagenesis, Impairment of Fertility

No adequate studies have been conducted in animals to determine whether acetaminophen or butalbital have a potential for carcinogenesis, mutagenesis or impairment of fertility.

Pregnancy

Teratogenic Effects

Pregnancy Category C: Animal reproduction studies have not been conducted with this combination product. It is also not known whether butalbital, acetaminophen, and caffeine can cause fetal harm when administered to a pregnant woman or can affect reproduction capacity. This product should be given to a pregnant woman only when clearly needed.

Nonteratogenic Effects

Withdrawal seizures were reported in a two-day-old male infant whose mother had taken a butalbital-containing drug during the last two months of pregnancy. Butalbital was found in the infant's serum. The infant was given phenobarbital 5 mg/kg, which was tapered without further seizure or other withdrawal

symptoms.

Nursing Mothers

Caffeine, barbiturates, and acetaminophen are excreted in breast milk in small amounts, but the significance of their effects on nursing infants is not known. Because of potential for serious adverse reactions in nursing infants from butalbital, acetaminophen, and caffeine, a decision should be made whether to discontinue nursing or to discontinue the drug, taking into account the importance of the drug to the mother.

Pediatric Use

Safety and effectiveness in pediatric patients below the age of 12 have not been established.

Geriatric Use

Clinical studies of butalbital, acetaminophen and caffeine capsules did not include sufficient numbers of subjects aged 65 and over to determine whether they respond differently from younger subjects. Other reported clinical experience has not identified differences in responses between the elderly and younger patients. In general, dose selection for an elderly patient should be cautious, usually starting at the low end of the dosing range, reflecting the greater frequency of decreased hepatic, renal, or cardiac function, and of concomitant disease or other drug therapy.

Butalbital is known to be substantially excreted by the kidney, and the risk of toxic reactions to this drug may be greater in patients with impaired renal function. Because elderly patients are more likely to have decreased renal function, care should be taken in dose selection, and it may be useful to monitor renal function.

ADVERSE REACTIONS

Frequently Observed

The most frequently reported adverse reactions are drowsiness, lightheadedness, dizziness, sedation, shortness of breath, nausea, vomiting, abdominal pain, and intoxicated feeling.

Infrequently Observed

All adverse events tabulated below are classified as infrequent.

Central Nervous System: headache, shaky feeling, tingling, agitation, fainting, fatigue, heavy eyelids, high energy, hot spells, numbness, sluggishness, seizure. Mental confusion, excitement, or depression can also occur due to intolerance, particularly in elderly or debilitated patients, or due to overdosage of butalbital.

Autonomic Nervous System: dry mouth, hyperhidrosis.

Gastrointestinal: difficulty swallowing, heartburn, flatulence, constipation.

Cardiovascular: tachycardia.

Musculoskeletal: leg pain, muscle fatigue.

Genitourinary: diuresis.

Miscellaneous: pruritus, fever, earache, nasal congestion, tinnitus, euphoria, allergic reactions.

Several cases of dermatological reactions, including toxic epidermal necrolysis and erythema multiforme, have been reported.

The following adverse drug events may be borne in mind as potential effects of the components of this product. Potential effects of high dosage are listed in the OVERDOSAGE section.

Acetaminophen: allergic reactions, rash, thrombocytopenia, agranulocytosis.

Caffeine: cardiac stimulation, irritability, tremor, dependence, nephrotoxicity, hyperglycemia.

DRUG ABUSE AND DEPENDENCE

Abuse and Dependence

Butalbital

Barbiturates may be habit-forming: Tolerance, psychological dependence, and physical dependence may occur especially following prolonged use of high doses of barbiturates. The average daily dose for the barbiturate addict is usually about 1500 mg. As tolerance to barbiturates develops, the amount needed to maintain the same level of intoxication increases; tolerance to a fatal dosage, however, does not increase more than two-fold. As this occurs, the margin between an intoxication dosage and fatal dosage becomes smaller. The lethal dose of a barbiturate is far less if alcohol is also ingested. Major withdrawal symptoms (convulsions and delirium) may occur within 16 hours and last up to 5 days after abrupt cessation of these drugs. Intensity of withdrawal symptoms gradually declines over a period of approximately 15 days. Treatment of barbiturate dependence consists of cautious and gradual withdrawal of the drug. Barbiturate-dependent patients can be withdrawn by using a number of different withdrawal regimens. One method involves initiating treatment at the patient's regular dosage level and gradually decreasing the daily dosage as tolerated by the patient.

OVERDOSAGE

Following an acute overdosage of butalbital, acetaminophen, and caffeine, toxicity may result from the barbiturate or the acetaminophen. Toxicity due to caffeine is less likely, due to the relatively small amounts in this formulation.

Signs and Symptoms

Toxicity from **barbiturate** poisoning include drowsiness, confusion, and coma; respiratory depression; hypotension; and hypovolemic shock.

In **acetaminophen** overdosage: dose-dependent, potentially fatal hepatic necrosis is the most serious adverse effect. Renal tubular necroses, hypoglycemic coma, and thrombocytopenia may also occur. Early symptoms following a potentially hepatotoxic overdose may include: nausea, vomiting, diaphoresis, and general malaise. Clinical and laboratory evidence of hepatic toxicity may not be apparent until 48 to 72 hours post-ingestion. In adults hepatic toxicity has rarely been reported with acute overdoses of less than 10 grams, or fatalities with less than 15 grams.

Acute **caffeine** poisoning may cause insomnia, restlessness, tremor, and delirium, tachycardia and extrasystoles.

Treatment

A single or multiple overdose with this combination product is a potentially lethal polydrug overdose, and consultation with a regional poison control center is recommended.

Immediate treatment includes support of cardiorespiratory function and measures to reduce drug absorption. Vomiting should be induced mechanically, or with syrup of ipecac, if the patient is alert (adequate pharyngeal and laryngeal reflexes). Oral activated charcoal (1 g/kg) should follow gastric emptying. The first dose should be accompanied by an appropriate cathartic. If repeated doses are used, the cathartic might be included with alternate doses as required. Hypotension is usually hypovolemic and should respond to fluids. Pressors should be avoided. A cuffed endotracheal tube should be inserted before gastric lavage of the unconscious patient and when necessary, to provide assisted respiration. If renal function is normal, forced diuresis may aid in the elimination of the barbiturate.

Alkalinization of the urine increases renal excretion of some barbiturates, especially phenobarbital.

Meticulous attention should be given to maintaining adequate pulmonary ventilation. In severe cases of intoxication, peritoneal dialysis, or preferably hemodialysis may be considered. If hypoprothrombinemia occurs due to acetaminophen overdose, vitamin K should be administered intravenously.

If the dose of acetaminophen may have exceeded 140 mg/kg, acetylcysteine should be administered as early as possible. Serum acetaminophen levels should be obtained, since levels four or more hours following ingestion help predict acetaminophen toxicity. Do not await acetaminophen assay results before initiating treatment. Hepatic enzymes should be obtained initially, and repeated at 24-hour intervals.

Methemoglobinemia over 30% should be treated with methylene blue by slow intravenous administration.

Toxic Doses (for adults)

Butalbital:	toxic dose	1 g	(20 capsules)
Acetaminophen:	toxic dose	10 g	(33 capsules)
Caffeine:	toxic dose	1 g	(25 capsules)

In all cases of suspected overdose, call your Regional Poison Control Center to obtain the most up-to-date information about the treatment of overdose. Telephone numbers of certified Regional Poison Control Centers are listed in the Physicians' Desk Reference®*.

DOSAGE AND ADMINISTRATION

One or 2 capsules every 4 hours as needed. Total daily dosage should not exceed 6 capsules.

Extended and repeated use of this product is not recommended because of the potential for physical dependence.

HOW SUPPLIED

ORBIVAN™ Butalbital, Acetaminophen, and Caffeine Capsules USP 50 mg/300 mg/40 mg

Containing 50 mg butalbital, 300 mg acetaminophen, and 40 mg caffeine. Available as hard gelatin capsules with a green cap, printed with AP, and a yellow body, printed with 661. The capsules are supplied in bottles of 100 capsules (NDC 59702-661-01) and in unit dose pouches for patient trial available only through physician offices [NDC 59702-661-12].

Store at 20 to 25° C (68 to 77° F) [see USP Controlled Room Temperature];

Dispense in a tight, light-resistant container.

*Trademark of Medical Economics Company, Inc.

Rx only

Mfg. for:

Atley Pharmaceuticals, Inc.

Ashland, VA 23005

7029 Rev. 03/10

IMMEDIATE CONTAINER LABEL

NDC 59702-661-01

ORBIVAN™

Butalbital, Acetaminophen, and Caffeine Capsules, USP

Each Capsule Contains:
 Butalbital, USP 50 mg
Warning: May be habit-forming
 Acetaminophen, USP 300 mg
 Caffeine, USP 40 mg

Usual Adult Dosage: 1 or 2 capsules every 4 hours. Total daily dose should not exceed 6 capsules. See package insert for additional prescribing information.


Store and Dispense: Store at 20° to 25°C (68° to 77°F). [See USP Controlled Room Temperature]. Dispense in a tight light-resistant container as defined in the USP.

KEEP THIS AND ALL MEDICATION OUT OF THE REACH OF CHILDREN.

Mfg. for: Atley Pharmaceuticals, Inc., Ashland, VA 23005
7029 Rev. 03/10

Lot No.:
Exp. Date:

ATLEY Rx Only
100 Capsules



3 59702 66101 0

100 Count Container Label [ECL]

NDC 59702-661-12

ORBIVAN™

Butalbital, Acetaminophen, and Caffeine Capsules, USP

Each Capsule Contains:
 Butalbital, USP 50 mg
 □ **Warning:** May be habit-forming
 Acetaminophen, USP 300 mg
 Caffeine, USP 40 mg

ATLEY Rx Only Professional Sample - Not For Sale
1 Capsule

ORBIVAN™

Butalbital, Acetaminophen, and Caffeine Capsules, USP

Usual Adult Dosage: 1 or 2 capsules every 4 hours. Total daily dose should not exceed 6 capsules. See package insert for additional prescribing information.

KEEP THIS AND ALL MEDICATION OUT OF THE REACH OF CHILDREN.

Mfg. for: Atley Pharmaceuticals, Inc., Ashland, VA 23005

[Front] [Back] Unit Dose Pouch

ORBIVAN			
butalbital, acetaminophen, and caffeine capsule			
Product Information			
Product Type	HUMAN PRESCRIPTION DRUG	Item Code (Source)	NDC:59702-661
Route of Administration	ORAL	DEA Schedule	CIII
Active Ingredient/Active Moiety			
Ingredient Name		Basis of Strength	Strength
BUTALBITAL (UNII: KHS0AZ4JVK) (BUTALBITAL - UNII:KHS0AZ4JVK)		BUTALBITAL	50 mg
ACETAMINOPHEN (UNII: 362O9ITL9D) (ACETAMINOPHEN - UNII:362O9ITL9D)		ACETAMINOPHEN	300 mg

CAFFEINE (UNII: 3G6A5W338E) (CAFFEINE - UNII:3G6A5W338E)		CAFFEINE	40 mg	
Product Characteristics				
Color	GREEN (Dark Green Cap) , YELLOW (Yellow Body)	Score	no score	
Shape	CAPSULE (Hard Gelatin Capsule)	Size	13mm	
Flavor		Imprint Code	AP;661	
Contains				
Packaging				
#	Item Code	Package Description	Marketing Start Date	Marketing End Date
1	NDC:59702-661-01	100 in 1 BOTTLE		
2	NDC:59702-661-12	1 in 1 POUCH		
Marketing Information				
Marketing Category	Application Number or Monograph Citation	Marketing Start Date	Marketing End Date	
ANDA	ANDA040885	04/23/2010		

Labeler - Atley Pharmaceuticals, Inc. (928666536)

Revised: 4/2010

Atley Pharmaceuticals, Inc.