

**CAPTURE TOTALE C.E.L.L. ENERGY SUPER POTENT SERUM FOUNDATION  
BROAD SPECTRUM SPF 20 1N- ensulizole, octisalate emulsion  
Parfums Christian Dior**

-----  
**CAPTURE TOTALE C.E.L.L. ENERGY SUPER POTENT SERUM FOUNDATION  
BROAD SPECTRUM SPF 20 1N**

***Drug Facts***

***Active ingredients***

Ensulizole 2.70 % Octisalate 4.50 %

***Purpose***

Sunscreen

***Uses***

- Helps prevent sunburn.
- If used as directed with other sun protection measures ( ), decreases the risk of skin cancer and early skin aging caused by the sun. ***see Directions***

***Warnings***

**For external use only.**

**Do not use**

on damaged or broken skin.

**When using this product,**

keep out of eyes. Rinse with water to remove.

**Stop use and ask a doctor if**

rash occurs.

**Keep out of reach of children.**

If swallowed, get medical help or contact a Poison Control Center right away.

***Directions***

- Apply liberally 15 minutes before sun exposure.
- Reapply at least every 2 hours.
- Use a water-resistant sunscreen if swimming or sweating.
- Spending time in the sun increases your risk of skin cancer and early skin aging. To

decrease this risk, regularly use a sunscreen with a broad spectrum SPF of 15 or higher and other sun protection measures including: **Sun Protection Measures.**

- limit time in the sun, especially from 10 a.m. - 2 p.m.
- wear long-sleeve shirts, pants, hats, and sunglasses.
- Children under 6 months of age: ask a doctor.

### ***Other information***

- Protect the product in this container from excessive heat and direct sun.

### ***Inactive ingredients***

• AQUA (WATER) • DIMETHICONE • METHYL TRIMETHICONE • LAURYL PEG-9 POLYDIMETHYLSILOXYETHYL DIMETHICONE • PHENYL TRIMETHICONE • SYNTHETIC FLUOROPHLOGOPITE • GLYCERIN • PENTYLENE GLYCOL • SILICA • BUTYLENE GLYCOL • SORBITAN SESQUIOLEATE • TROMETHAMINE • ACRYLATES/DIMETHICONE COPOLYMER • MICA • DIMETHICONOL • PARFUM (FRAGRANCE) • SODIUM MYRISTOYL GLUTAMAT • GLYCERYL UNDECYL DIMETHICONE • CHLORPHENESIN • CAPRYLYL GLYCOL • SODIUM CHLORIDE • DIMETHICONE/VINYL DIMETHICONE CROSSPOLYMER • POLYSORBATE 80 • HYDROGEN DIMETHICONE • ALUMINUM HYDROXIDE • ADENOSINE • SODIUM ACETYLATED HYALURONATE • XYLITOL • TOCOPHEROL • SODIUM SURFACTIN • AFRAMOMUM ANGUSTIFOLIUM SEED EXTRACT • PALMARIA PALMATA EXTRACT • SODIUM BENZOATE • HYDROLYZED SOY PROTEIN • PAEONIA LACTIFLORA ROOT EXTRACT • TREHALOSE • POTASSIUM SORBATE • LILIUM CANDIDUM BULB EXTRACT • JASMINUM OFFICINALE (JASMINE) FLOWER EXTRACT. [MAY CONTAIN:CI 77491,CI 77492,CI 77499 (IRON OXIDES) • CI 77891 (TITANIUM DIOXIDE) • CI 77947 (ZINC OXIDE)].

*N°15310/Z*

**Package Labeling:61957-2401-0**

Christian Dior - 75008 Paris - France - W1S 2UE, UK - MADE IN FRANCE  
In USA: 19E57 NY, NY 10022

1N (010)



Bien agiter.  
Shake well.



30 ml - 1 FL. OZ

Parfums

BEFORE 010  
NEUTRAL  
1N



91709  
TP 387

**Drug Facts**

**Active ingredients**

Ensilizole 2.70 %  
Octisalate 4.50 %

**Purpose**

Sunscreen

**Uses**

- Helps prevent sunburn.
- If used as directed with other sun protection measures (see *Directions*), decreases the risk of skin cancer and early skin aging caused by the sun.

**Warnings**

For external use only.

Do not use on damaged or broken skin.

When using this product, keep out of eyes. Rinse with water to remove.

Stop use and ask a doctor if rash occurs.

Keep out of reach of children.

If swallowed, get medical help or contact a Poison Control Center right away.

**Directions**

- Apply liberally 15 minutes before sun exposure.
- Reapply at least every 2 hours.
- Use a water-resistant sunscreen if swimming or sweating.
- **Sun Protection Measures.** Spending time in the sun increases your risk of skin cancer and early skin aging. To decrease this risk, regularly use a sunscreen with a broad spectrum SPF of 15 or higher and other sun protection measures including:
  - limit time in the sun, especially from 10 a.m. – 2 p.m.
  - wear long-sleeve shirts, pants, hats, and sunglasses.
  - Children under 6 months of age: ask a doctor.

**Other information**

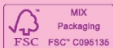
- Protect the product in this container from excessive heat and direct sun.

**Drug Facts (continued)**

**Inactive ingredients**

AQUA (WATER) • DIMETHICONE • METHYL TRIMETHICONE • LAURYL PEG-9 POLYDIMETHYLSILOXYETHYL DIMETHICONE • PHE-NYL TRIMETHICONE • SYNTHETIC FLUOR-PHLOGOPITE • GLYCERIN • PENTYLENE GLYCOL • SILICA • BUTYLENE GLYCOL • SORBITAN SESQUIOLEATE • TROMETHA-MINE • ACRYLATES/DIMETHICONE COPO-LYMER • MICA • DIMETHICONOL • PARFUM (FRAGRANCE) • SODIUM MYRISTOYL GLU-TAMATE • GLYCERYL UNDECYL DIMETHI-CONE • CHLORPHENESIN • CAPRYLYL GLY-COL • SODIUM CHLORIDE • DIMETHICONE/ VINYL DIMETHICONE COPOLYMER • POLYSORBATE 80 • HYDROGEN DIMETHI-CONE • ALUMINUM HYDROXIDE • ADENO-SINE • SODIUM ACETYLATED HYALURO-NATE • XYLITOL • TOCOPHEROL • SODIUM SURFACTIN • AFRAMOMUM ANGIUSTIFO-LIUM SEED EXTRACT • PALMARIA PALMA-TA EXTRACT • SODIUM BENZOATE • HY-DROLYZED SOY PROTEIN • PAEONIA LAC-TIFLORA ROOT EXTRACT • TREHALOSE • POTASSIUM SORBATE • LILIUM CANDIDUM BULB EXTRACT • JASMINUM OFFICINALE (JASMINE) FLOWER EXTRACT.  
[MAY CONTAIN: CI 77491, CI 77492, CI 77499 (IRON OXIDES), CI 77891 (TITANIUM DIO-XIDE) • CI 77947 (ZINC OXIDE)]. N° 15310Z

The cardboard box is recyclable. Please sort it accordingly.\*  
\* According to local recycling guidelines.



MADE IN FRANCE  
Parfums Christian Dior  
33, avenue Hoche - 75008 Paris - France  
W1S 2UE, UK  
In USA: 19E57 NY, NY 10022  
www.dior.com

MAKE UP  
1N

CAPTURE  
TOTALE  
C.E.L.L. ENERGY

SUPER POTENT  
SERUM FOUNDATION

CORRECTING AGE-DEFYING  
SERUM FOUNDATION  
WITH SUNSCREEN  
FIRMING-WRINKLES-DARK SPOTS-RADIANCE

BROAD SPECTRUM SPF 20

30 ml  
Dior  
1 FL.OZ

The new\* global serum foundation that delivers exceptional age-defying correction for radiantly youthful skin.

This serum foundation is enriched with self-vectorized hyaluronic acid for an instant smoothing effect, with a formula offering complete correction. In perfect affinity with the skin, its supple formula helps correct the visible signs of aging without emphasizing them – wrinkles, visible pores, loss of firmness and radiance, as well as colour imperfections. The skin instantly appears more supple, firmer and plumper. Wrinkles are visibly smoothed and spots discreetly concealed. The skin's texture appears refined. The complexion glows with youth.

This serum foundation provides all-day comfort and hydration for even the driest skin and protects the skin from environmental stressors thanks to its UVA and UVB protection.

In ideal form, the face is completely radiant. Instantly and lastingly.

Apply after your Capture Totale skincare routine.

\* At Dior.  
C.E.L.L. Energy : Cutting-Edge Long-Lasting Energy.



Shake before use

For more information on this product and its ingredients.



GET ARTICLE NE PEUT  
ÊTRE VENDU QUE PAR LES  
DISTRIBUTEURS AGRÉÉS DES  
Parfums Christian Dior

33

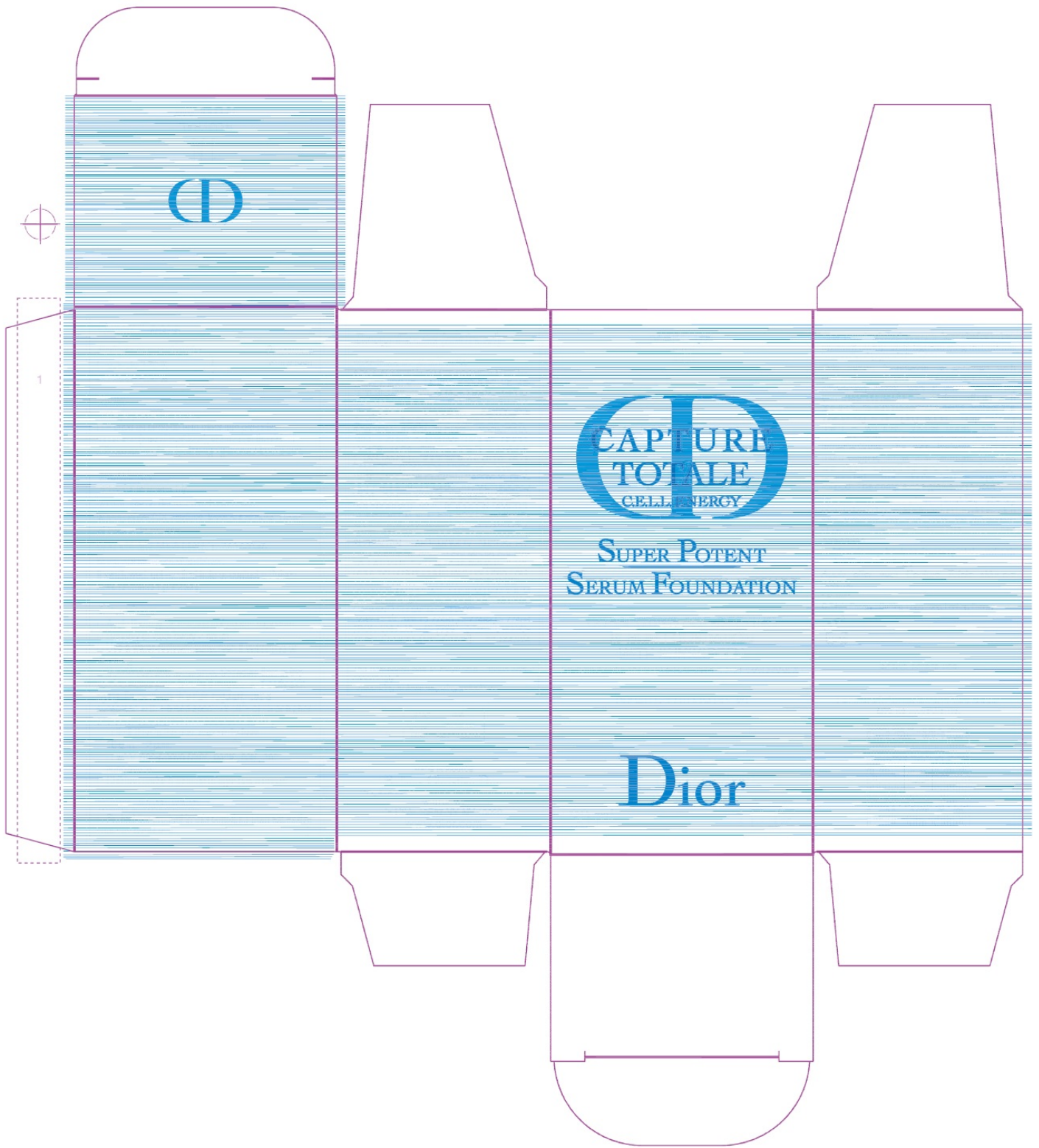
1

7424208908

C020350010



3 348901 549219



**Package Labeling:61957-2401-1**

**TESTER  
NOT FOR SALE**

**ACTIVE INGREDIENTS:**  
ENSULIZOLE 2.70%  
OCTISALATE 4.50%

**WARNINGS:**

For external use only. Do not use on damaged or broken skin. When using this product, keep out of eyes. Rinse with water to remove. Stop use and ask a doctor if rash occurs. Keep out of reach of children. If swallowed, get medical help or contact a Poison Control Center right away.



SEE SALE PRODUCT FOR COMPLETE DRUGS FACTS

MADE IN FRANCE

Parfums Christian Dior  
75008 Paris - France  
W1S 2UE, UK

In USA: 19E57 NY, NY 10022

20 ml - 0.67 FL.OZ

**TESTER  
NOT FOR SALE**

**ACTIVE INGREDIENTS:**  
ENSULIZOLE 2.70%  
OCTISALATE 4.50%

**WARNINGS:**

For external use only. Do not use on damaged or broken skin. When using this product, keep out of eyes. Rinse with water to remove. Stop use and ask a doctor if rash occurs. Keep out of reach of children. If swallowed, get medical help or contact a Poison Control Center right away.



SEE SALE PRODUCT FOR COMPLETE DRUGS FACTS

MADE IN FRANCE

Parfums Christian Dior  
75008 Paris - France  
W1S 2UE, UK

In USA: 19E57 NY, NY 10022

20 ml - 0.67 FL.OZ

**1N  
(010)  
CAPTURE  
TOTALE**

C.E.L.L. ENERGY

**SUPER POTENT  
SERUM FOUNDATION**

CORRECTING AGE-DEFYING  
SERUM FOUNDATION  
WITH SUNSCREEN

BROAD SPECTRUM SPF 20

**Dior**  
C220450010

**CAPTURE TOTALE C.E.L.L. ENERGY SUPER POTENT SERUM  
FOUNDATION BROAD SPECTRUM SPF 20 1N**

ensulizole, octisalate emulsion

**Product Information**

<b>Product Type</b>	HUMAN OTC DRUG	<b>Item Code (Source)</b>	NDC:61957-2401
<b>Route of Administration</b>	TOPICAL		

**Active Ingredient/Active Moiety**

Ingredient Name	Basis of Strength	Strength
<b>ENSULIZOLE</b> (UNII: 9YQ9DI1W42) (ENSULIZOLE - UNII:9YQ9DI1W42)	ENSULIZOLE	27 mg in 1 mL
<b>OCTISALATE</b> (UNII: 4X49Y0596W) (OCTISALATE - UNII:4X49Y0596W)	OCTISALATE	45 mg in 1 mL

**Inactive Ingredients**

Ingredient Name	Strength
<b>WATER</b> (UNII: 059QF0KO0R)	
<b>DIMETHICONE</b> (UNII: 92RU3N3Y1O)	
<b>METHYL TRIMETHICONE</b> (UNII: S73ZQI0GXM)	

<b>LAURYL PEG-9 POLYDIMETHYLSILOXYETHYL DIMETHICONE</b> (UNII: 25G622K2RA)
<b>PHENYL TRIMETHICONE</b> (UNII: DR0K5NOJ4R)
<b>MAGNESIUM POTASSIUM ALUMINOSILICATE FLUORIDE</b> (UNII: YK3DC63Y5M)
<b>GLYCERIN</b> (UNII: PDC6A3C0OX)
<b>PENTYLENE GLYCOL</b> (UNII: 50C1307PZG)
<b>SILICON DIOXIDE</b> (UNII: ETJ7Z6XBU4)
<b>BUTYLENE GLYCOL</b> (UNII: 3XUS85K0RA)
<b>SORBITAN SESQUIOLEATE</b> (UNII: 0W8RRI5W5A)
<b>TROMETHAMINE</b> (UNII: 023C2WHX2V)
<b>MICA</b> (UNII: V8A1AW0880)
<b>DIMETHICONOL (100000 CST)</b> (UNII: OSA9UP217S)
<b>SODIUM MYRISTOYL GLUTAMATE</b> (UNII: AYU7QD893W)
<b>CHLORPHENESIN</b> (UNII: I670DAL4SZ)
<b>CAPRYLYL GLYCOL</b> (UNII: 00YIU5438U)
<b>SODIUM CHLORIDE</b> (UNII: 451W47IQ8X)
<b>DIMETHICONE/VINYL DIMETHICONE CROSSPOLYMER (HARD PARTICLE)</b> (UNII: H895X08VNQ)
<b>POLYSORBATE 80</b> (UNII: 6OZP39ZG8H)
<b>HYDROGEN DIMETHICONE (13 CST)</b> (UNII: 4QGR4P2YOI)
<b>ALUMINUM HYDROXIDE</b> (UNII: 5QB0T2IUN0)
<b>ADENOSINE</b> (UNII: K72T3FS567)
<b>SODIUM ACETYLATED HYALURONATE</b> (UNII: WN66R7GL93)
<b>XYLITOL</b> (UNII: VCQ006KQ1E)
<b>TOCOPHEROL</b> (UNII: R0ZB2556P8)
<b>AFRAMOMUM ANGUSTIFOLIUM SEED</b> (UNII: OSF83Q896J)
<b>PALMARIA PALMATA</b> (UNII: 7832HOY4ZQ)
<b>SODIUM BENZOATE</b> (UNII: OJ245FE5EU)
<b>HYDROLYZED SOY PROTEIN (ENZYMATIC; 2000 MW)</b> (UNII: 1394NXB9L6)
<b>PAEONIA LACTIFLORA ROOT</b> (UNII: 3Z3866YW6P)
<b>TREHALOSE</b> (UNII: B8WCK70T7I)
<b>POTASSIUM SORBATE</b> (UNII: 1VPU26JZZ4)
<b>LILIUM CANDIDUM BULB</b> (UNII: AHG15J8AM0)
<b>JASMINUM OFFICINALE FLOWER</b> (UNII: 0Q8K841432)

### Packaging

#	Item Code	Package Description	Marketing Start Date	Marketing End Date
1	NDC:61957-2401-0	30 mL in 1 BOTTLE; Type 0: Not a Combination Product	09/01/2021	
2	NDC:61957-2401-1	20 mL in 1 TUBE; Type 0: Not a Combination Product	09/01/2021	

### Marketing Information

Marketing Category	Application Number or Monograph Citation	Marketing Start Date	Marketing End Date
OTC Monograph Drug	M020	09/01/2021	

Revised: 11/2023

Parfums Christian Dior