

LORZONE- chlorzoxazone tablet
Lake Erie Medical DBA Quality Care Products LLC

For Painful Musculoskeletal Conditions

PRESCRIBING INFORMATION

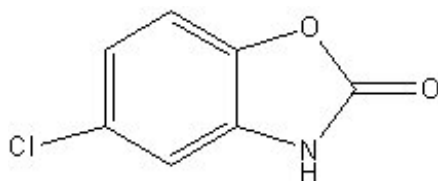
DESCRIPTION

Each 375 mg Lorzone[®] tablet contains: chlorzoxazone USP 375 mg.

Each 750 mg Lorzone[®] tablet contains: chlorzoxazone USP 750 mg.

Chemical Name: 5-Chloro-2-benzoxazolinone.

Structural Formula:



Molecular Formula: C₇H₄ClNO₂

Molecular Weight: 169.56

Chlorzoxazone USP is a white or practically white, practically odorless, crystalline powder. Chlorzoxazone is slightly soluble in water; sparingly soluble in alcohol, in isopropyl alcohol, and in methanol; soluble in solutions of alkali hydroxides and ammonia.

Inactive ingredients: anhydrous lactose, croscarmellose sodium, docusate sodium, magnesium stearate, microcrystalline cellulose, pregelatinized corn starch and sodium benzoate.

CLINICAL PHARMACOLOGY

Chlorzoxazone is a centrally-acting agent for painful musculoskeletal conditions. Data available from animal experiments as well as human study indicate that chlorzoxazone acts primarily at the level of the spinal cord and subcortical areas of the brain where it inhibits multisynaptic reflex arcs involved in producing and maintaining skeletal muscle spasm of varied etiology. The clinical result is a reduction of the skeletal muscle spasm with relief of pain and increased mobility of the involved muscles. Blood levels of chlorzoxazone can be detected in people during the first 30 minutes and peak levels may be reached, in the majority of the subjects, in about 1 to 2 hours after oral administration of chlorzoxazone. Chlorzoxazone is rapidly metabolized and is excreted in the urine, primarily in a conjugated form as the glucuronide. Less than one percent of a dose of chlorzoxazone is excreted unchanged in the urine in 24 hours.

INDICATIONS AND USAGE

Lorzone[®] is indicated as an adjunct to rest, physical therapy, and other measures for the relief of discomfort associated with acute, painful musculoskeletal conditions. The mode of action of this drug has not been clearly identified, but may be related to its sedative properties. Chlorzoxazone does not directly relax tense skeletal muscles in man.

CONTRAINDICATIONS

Lorzone[®] is contraindicated in patients with known intolerance to the drug.

WARNINGS

Serious (including fatal) hepatocellular toxicity has been reported rarely in patients receiving chlorzoxazone. The mechanism is unknown but appears to be idiosyncratic and unpredictable. Factors predisposing patients to this rare event are not known. Patients should be instructed to report early signs and/or symptoms of hepatotoxicity such as fever, rash, anorexia, nausea, vomiting, fatigue, right upper quadrant pain, dark urine, or jaundice. Lorzone[®] should be discontinued immediately and a physician consulted if any of these signs or symptoms develop. Lorzone[®] use should also be discontinued if a patient develops abnormal liver enzymes (e.g., AST, ALT, alkaline phosphates and bilirubin).

The concomitant use of alcohol or other central nervous system depressants may have an additive effect.

Usage in Pregnancy: The safe use of Lorzone[®] has not been established with respect to the possible adverse effects upon fetal development. Therefore, it should be used in women of childbearing potential only when, in the judgment of the physician, the potential benefits outweigh the possible risks.

PRECAUTIONS

Lorzone[®] should be used with caution in patients with known allergies or with a history of allergic reactions to drugs. If sensitivity reaction occurs such as urticaria, redness, or itching of the skin, the drug should be stopped.

If any symptoms suggestive of liver dysfunction are observed, the drug should be discontinued.

ADVERSE REACTIONS

Chlorzoxazone-containing products are usually well tolerated. It is possible in rare instances that chlorzoxazone may have been associated with gastrointestinal bleeding. Drowsiness, dizziness, lightheadedness, malaise, or overstimulation may be noted by an occasional patient. Rarely, allergic-type skin rashes, petechiae, or ecchymoses may develop during treatment. Angioneurotic edema or anaphylactic reactions are extremely rare. There is no evidence that the drug will cause renal damage. Rarely, a patient may note discoloration of the urine resulting from a phenolic metabolite of chlorzoxazone. This finding is of no known clinical significance.

OVERDOSAGE

Symptoms: Initially, gastrointestinal disturbances such as nausea, vomiting, or diarrhea together with drowsiness, dizziness, lightheadedness or headache may occur. Early in the course there may be malaise or sluggishness followed by marked loss of muscle tone, making voluntary movement impossible. The deep tendon reflexes may be decreased or absent. The sensorium remains intact, and there is no peripheral loss of sensation. Respiratory depression may occur with rapid, irregular respiration and intercostals and substernal retraction. The blood pressure is lowered, but shock has not been observed.

Treatment: Gastric lavage or induction of emesis should be carried out, followed by administration of activated charcoal. Thereafter, treatment is entirely supportive. If respirations are depressed, oxygen and artificial respiration should be employed and a patent airway assured by use of an oropharyngeal airway or endotracheal tube. Hypotension may be counteracted by use of dextran, plasma, concentrated albumin or a vasopressor agent such as norepinephrine. Cholinergic drugs or analeptic drugs are of no value and should not be used.

DOSAGE AND ADMINISTRATION

Usual Adult Dosage

Lorzone[®] Tablets (chlorzoxazone USP) 375 mg:

One tablet three or four times daily. If adequate response is not obtained with this dose, the 375 mg tablets may be increased to two tablets (750 mg) three or four times daily. As improvement occurs dosage can usually be reduced.

Lorzone[®] Tablets (chlorzoxazone USP) 750 mg:

1/3 tablet (250 mg) three or four times daily. Initial dosage for painful musculoskeletal conditions should be 2/3 tablet (500 mg) three or four times daily. If adequate response is not obtained with this dose, it may be increased to one tablet (750 mg) three or four times daily. As improvement occurs dosage can usually be reduced.

HOW SUPPLIED

Lorzone[®] Tablets (chlorzoxazone USP) is supplied as follows:

375 mg

A white capsule shaped tablet, debossed "ADG" on one side and "375" on the other side.

55700-517-30

750 mg

A white capsule shaped tablet, debossed "ADG" on the trisected side and "750" on the bisected side.

Dispense in tight container as defined in the official compendium.

Store at 20° to 25°C (68° to 77°F) [see USP Controlled Room Temperature].

Manufactured for:

Vertical Pharmaceuticals, LLC

Sayreville, NJ 08872

www.verticalpharma.com

Customer Service: 1-866-600-4799

Code 1015B00

Rev. 11/14



Packaged and Distributed by
Temperance, MI 48182

Quality Care Products, LLC

1-800-337-8603

**LORZONE 375 MG
30 TABLETS**

Each tablet contains
chlorzoxazone USP 375 mg

Lot:
Exp:

Item # 55700051730P
NDC: 55700-0517-30

Mfr for: Vertical Pharm., LLC, Sayreville, NJ 08872
Consult with a physician or see insert for dosage.
Consultar con el medico o consulte insertar para dosis.
white capsule shaped tablet, debossed "ADG" on
one side and "375" on the other side

Warning: Keep out of children's reach.
Dispense in this tight/light resistant container.
Store at controlled temperature 68-77 degrees F.
Caution: Do not use with alcohol
without consulting a physician

**Rx
only**

LORZONE 375 MG
30 TABLETS
Lot:
Exp:
NDC: 55700-0517-30
Rx #: 10000600656

LORZONE 375 MG
30 TABLETS
Lot:
Exp:
NDC: 55700-0517-30
Rx #: 10000600656

Rx #: 10000600656

LORZONE

chlorzoxazone tablet

Product Information

Product Type	HUMAN PRESCRIPTION DRUG	Item Code (Source)	NDC:55700-517(NDC:68025-046)
Route of Administration	ORAL		

Active Ingredient/Active Moiety

Ingredient Name	Basis of Strength	Strength
CHLORZO XAZONE (UNII: H0DE420U8G) (CHLORZO XAZONE - UNII:H0DE420U8G)	CHLORZO XAZONE	375 mg

Inactive Ingredients

Ingredient Name	Strength
ANHYDRO US LACTOSE (UNII: 3SY5LH9PMK)	
CELLULOSE, MICRO CRYSTALLINE (UNII: OP1R32D61U)	
CROSCARME LLOSE SODIUM (UNII: M28OL1HH48)	
DOCUSATE SODIUM (UNII: F05Q2T2JA0)	
MAGNESIUM STEARATE (UNII: 70097M6I30)	
SODIUM BENZOATE (UNII: OJ245FE5EU)	
STARCH, CORN (UNII: O8232NY3SJ)	

Product Characteristics

Color	WHITE	Score	no score
Shape	OVAL (CAPSULE-SHAPED)	Size	17mm
Flavor		Imprint Code	ADG;375
Contains			

Packaging

Marketing Start Marketing End

#	Item Code	Package Description	Marketing Start Date	Marketing End Date
1	NDC:55700-517-30	30 in 1 BOTTLE, PLASTIC; Type 0: Not a Combination Product	04/14/2017	
Marketing Information				
Marketing Category	Application Number or Monograph Citation	Marketing Start Date	Marketing End Date	
ANDA	ANDA040861	10/01/2011		

Labeler - Lake Erie Medical DBA Quality Care Products LLC (831276758)

Establishment			
Name	Address	ID/FEI	Business Operations
Lake Erie Medical DBA Quality Care Products LLC		831276758	repack(55700-517)

Revised: 4/2017

Lake Erie Medical DBA Quality Care Products LLC