

**ALPRAZOLAM- alprazolam tablet**  
**Advanced Rx Pharmacy of Tennessee, LLC**

-----  
**Alprazolam 0.5mg Tablets**

**Boxed Warning**

**WARNING: RISKS FROM CONCOMITANT USE WITH OPIOIDS; ABUSE, MISUSE, AND ADDICTION; AND DEPENDENCE AND WITHDRAWAL REACTIONS**

- Concomitant use of benzodiazepines and opioids may result in profound sedation, respiratory depression, coma, and death. Reserve concomitant prescribing of these drugs for patients for whom alternative treatment options are inadequate. Limit dosages and durations to the minimum required. Follow patients for signs and symptoms of respiratory depression and sedation [see WARNINGS AND PRECAUTIONS (5.1), DRUG INTERACTIONS (7.1)].
- The use of benzodiazepines, including alprazolam tablets, exposes users to risks of abuse, misuse, and addiction, which can lead to overdose or death. Abuse and misuse of benzodiazepines commonly involve concomitant use of other medications, alcohol, and/or illicit substances, which is associated with an increased frequency of serious adverse outcomes. Before prescribing alprazolam tablets and throughout treatment, assess each patient's risk for abuse, misuse, and addiction [see WARNINGS AND PRECAUTIONS (5.2)].
- The continued use of benzodiazepines, including alprazolam tablets, may lead to clinically significant physical dependence. The risks of dependence and withdrawal increase with longer treatment duration and higher daily dose. Abrupt discontinuation or rapid dosage reduction of alprazolam tablets after continued use may precipitate acute withdrawal reactions, which can be life-threatening. To reduce the risk of withdrawal reactions, use a gradual taper to discontinue alprazolam tablets or reduce the dosage [see DOSAGE AND ADMINISTRATION (2.2), WARNINGS AND PRECAUTIONS (5.3)].

**1. Indications and Usage Section**

INDICATIONS AND USAGE

Alprazolam tablets are indicated for the:

acute treatment of generalized anxiety disorder (GAD) in adults.  
treatment of panic disorder (PD), with or without agoraphobia in adults.

**2. Dosage and Administration Section**

DOSAGE AND ADMINISTRATION

2.1 Dosage in Generalized Anxiety Disorder

The recommended starting oral dosage of alprazolam tablets for the acute treatment of patients with GAD is 0.25 mg to 0.5 mg administered three times daily. Depending upon the response, the dosage may be adjusted at intervals of every 3 to 4 days. The

maximum recommended dosage is 4 mg daily (in divided doses).

Use the lowest possible effective dose and frequently assess the need for continued treatment [see WARNINGS AND PRECAUTIONS (5.2)].

## 2.2 Dosage in Panic Disorder

The recommended starting oral dosage of alprazolam tablets for the treatment of PD is 0.5 mg three times daily. Depending on the response, the dosage may be increased at intervals of every 3 to 4 days in increments of no more than 1 mg per day.

Controlled trials of alprazolam tablets in the treatment of panic disorder included dosages in the range of 1 mg to 10 mg daily. The mean dosage was approximately 5 mg to 6 mg daily. Occasional patients required as much as 10 mg per day.

For patients receiving doses greater than 4 mg per day, periodic reassessment and consideration of dosage reduction is advised. In a controlled postmarketing dose-response study, patients treated with doses of alprazolam tablets greater than 4 mg per day for 3 months were able to taper to 50% of their total maintenance dose without apparent loss of clinical benefit.

The necessary duration of treatment for PD in patients responding to alprazolam tablets is unknown. After a period of extended freedom from panic attacks, a carefully supervised tapered discontinuation may be attempted, but there is evidence that this may often be difficult to accomplish without recurrence of symptoms and/or the manifestation of withdrawal phenomena [see DOSAGE AND ADMINISTRATION (2.3)].

## 2.3 Discontinuation or Dosage Reduction of Alprazolam Tablets

To reduce the risk of withdrawal reactions, use a gradual taper to discontinue alprazolam tablets or reduce the dosage. If a patient develops withdrawal reactions, consider pausing the taper or increasing the dosage to the previous tapered dosage level. Subsequently decrease the dosage more slowly [see WARNINGS AND PRECAUTIONS (5.3), DRUG ABUSE AND DEPENDENCE (9.3)].

Reduce the dosage by no more than 0.5 mg every 3 days. Some patients may benefit from an even more gradual discontinuation. Some patients may prove resistant to all discontinuation regimens.

In a controlled postmarketing discontinuation study of panic disorder patients which compared the recommended taper schedule with a slower taper schedule, no difference was observed between the groups in the proportion of patients who tapered to zero dose; however, the slower schedule was associated with a reduction in symptoms associated with a withdrawal syndrome.

## 2.4 Dosage Recommendations in Geriatric Patients

In geriatric patients, the recommended starting oral dosage of alprazolam tablets is 0.25 mg, given 2 or 3 times daily. This may be gradually increased if needed and tolerated. Geriatric patients may be especially sensitive to the effects of benzodiazepines. If adverse reactions occur at the recommended starting dosage, the dosage may be reduced [see USE IN SPECIFIC POPULATIONS (8.5), CLINICAL PHARMACOLOGY (12.3)].

## 2.5 Dosage Recommendations in Patients with Hepatic Impairment

In patients with hepatic impairment, the recommended starting oral dosage of alprazolam tablets is 0.25 mg, given 2 or 3 times daily. This may be gradually increased if

needed and tolerated. If adverse reactions occur at the recommended starting dose, the dosage may be reduced [see USE IN SPECIFIC POPULATIONS (8.6), CLINICAL PHARMACOLOGY (12.3)].

## 2.6 Dosage Modifications for Drug Interactions

Alprazolam tablets should be reduced to half of the recommended dosage when a patient is started on ritonavir and alprazolam together, or when ritonavir is administered to a patient treated with alprazolam. Increase the alprazolam tablets dosage to the target dose after 10 to 14 days of dosing ritonavir and alprazolam together. It is not necessary to reduce alprazolam tablets dose in patients who have been taking ritonavir for more than 10 to 14 days.

Alprazolam tablets are contraindicated with concomitant use of all strong CYP3A inhibitors, except ritonavir [see CONTRAINDICATIONS (4), WARNINGS AND PRECAUTIONS (5.5)].

## 3. Dosage Forms and Strengths

Alprazolam Tablets, USP are available as:

- 0.25 mg: White to off white, oval, biconvex tablets with break line on one side and debossed "B704" on the other side.
- 0.5 mg: Light orange to orange, oval, biconvex tablets with break line on one side and debossed "B705" on the other side.
- 1 mg: Light blue to blue, oval, biconvex tablets with break line on one side and debossed "B706" on the other side.
- 2 mg: Light blue to blue, rectangle tablets with three break lines on one side and two notches in between two break lines, debossed "B707" on the other side.

## 4. Contraindications Section

### CONTRAINDICATIONS

Alprazolam tablets are contraindicated in patients:

with known hypersensitivity to alprazolam or other benzodiazepines. Angioedema has been reported [see ADVERSE REACTIONS (6.2)].

taking strong cytochrome P450 3A (CYP3A) inhibitors (e.g., ketoconazole, itraconazole), except ritonavir [see DOSAGE AND ADMINISTRATION (2.6), WARNINGS AND PRECAUTIONS (5.5), DRUG INTERACTIONS (7.1)].

## 5. Warnings and Precautions

### 5.1 Risks from Concomitant Use with Opioids

Concomitant use of benzodiazepines, including alprazolam tablets, and opioids may result in profound sedation, respiratory depression, coma, and death. Because of these risks, reserve concomitant prescribing of these drugs in patients for whom alternative treatment options are inadequate.

Observational studies have demonstrated that concomitant use of opioid analgesics and benzodiazepines increases the risk of drug-related mortality compared to use of opioids

alone. If a decision is made to prescribe alprazolam tablets concomitantly with opioids, prescribe the lowest effective dosages and minimum durations of concomitant use, and follow patients closely for signs and symptoms of respiratory depression and sedation. In patients already receiving an opioid analgesic, prescribe a lower initial dose of alprazolam tablets than indicated in the absence of an opioid and titrate based on clinical response. If an opioid is initiated in a patient already taking alprazolam tablets, prescribe a lower initial dose of the opioid and titrate based upon clinical response.

Advise both patients and caregivers about the risks of respiratory depression and sedation when alprazolam tablets is used with opioids. Advise patients not to drive or operate heavy machinery until the effects of concomitant use with the opioid have been determined [see DRUG INTERACTIONS (7.1)].

## 5.2 Abuse, Misuse, and Addiction

The use of benzodiazepines, including alprazolam tablets, exposes users to the risks of abuse, misuse, and addiction, which can lead to overdose or death. Abuse and misuse of benzodiazepines often (but not always) involve the use of doses greater than the maximum recommended dosage and commonly involve concomitant use of other medications, alcohol, and/or illicit substances, which is associated with an increased frequency of serious adverse outcomes, including respiratory depression, overdose, or death [see DRUG ABUSE AND DEPENDENCE (9.2)].

Before prescribing alprazolam tablets and throughout treatment, assess each patient's risk for abuse, misuse, and addiction (e.g., using a standardized screening tool). Use of alprazolam tablets, particularly in patients at elevated risk, necessitates counseling about the risks and proper use of alprazolam tablets along with monitoring for signs and symptoms of abuse, misuse, and addiction. Prescribe the lowest effective dosage; avoid or minimize concomitant use of CNS depressants and other substances associated with abuse, misuse, and addiction (e.g., opioid analgesics, stimulants); and advise patients on the proper disposal of unused drug. If a substance use disorder is suspected, evaluate the patient and institute (or refer them for) early treatment, as appropriate.

## 5.3 Dependence and Withdrawal Reactions

To reduce the risk of withdrawal reactions, use a gradual taper to discontinue alprazolam tablets or reduce the dosage (a patient-specific plan should be used to taper the dose) [see DOSAGE AND ADMINISTRATION (2.3)].

Patients at an increased risk of withdrawal adverse reactions after benzodiazepine discontinuation or rapid dosage reduction include those who take higher dosages, and those who have had longer durations of use.

### Acute Withdrawal Reactions

The continued use of benzodiazepines, including alprazolam tablets, may lead to clinically significant physical dependence. Abrupt discontinuation or rapid dosage reduction of alprazolam tablets after continued use, or administration of flumazenil (a benzodiazepine antagonist) may precipitate acute withdrawal reactions, which can be life-threatening (e.g., seizures) [see DRUG ABUSE AND DEPENDENCE (9.3)].

### Protracted Withdrawal Syndrome

In some cases, benzodiazepine users have developed a protracted withdrawal syndrome with withdrawal symptoms lasting weeks to more than 12 months [see DRUG

## ABUSE AND DEPENDENCE (9.3)].

Certain adverse clinical events, some life-threatening, are a direct consequence of physical dependence to alprazolam tablets. These include a spectrum of withdrawal symptoms; the most important is seizure [see DRUG ABUSE AND DEPENDENCE (9.3)]. Even after relatively short-term use at doses of  $\leq 4$  mg/day, there is some risk of dependence. Spontaneous reporting system data suggest that the risk of dependence and its severity appear to be greater in patients treated with doses greater than 4 mg/day and for long periods (more than 12 weeks). However, in a controlled postmarketing discontinuation study of panic disorder patients who received alprazolam tablets, the duration of treatment (3 months compared to 6 months) had no effect on the ability of patients to taper to zero dose. In contrast, patients treated with doses of alprazolam tablets greater than 4 mg/day had more difficulty tapering to zero dose than those treated with less than 4 mg/day.

In a controlled clinical trial in which 63 patients were randomized to alprazolam tablets and where withdrawal symptoms were specifically sought, the following were identified as symptoms of withdrawal: heightened sensory perception, impaired concentration, dysosmia, clouded sensorium, paresthesias, muscle cramps, muscle twitch, diarrhea, blurred vision, appetite decrease, and weight loss. Other symptoms, such as anxiety and insomnia, were frequently seen during discontinuation, but it could not be determined if they were due to return of illness, rebound, or withdrawal.

### Interdose Symptoms

Early morning anxiety and emergence of anxiety symptoms between doses of alprazolam tablets have been reported in patients with panic disorder taking prescribed maintenance doses. These symptoms may reflect the development of tolerance or a time interval between doses which is longer than the duration of clinical action of the administered dose. In either case, it is presumed that the prescribed dose is not sufficient to maintain plasma levels above those needed to prevent relapse, rebound, or withdrawal symptoms over the entire course of the interdosing interval.

### 5.4 Effects on Driving and Operating Machinery

Because of its CNS depressant effects, patients receiving alprazolam tablets should be cautioned against engaging in hazardous occupations or activities requiring complete mental alertness such as operating machinery or driving a motor vehicle. For the same reason, patients should be cautioned about the concomitant use of alcohol and other CNS depressant drugs during treatment with alprazolam tablets [see DRUG INTERACTIONS (7.1)].

### 5.5 Neonatal Sedation and Withdrawal Syndrome

Use of alprazolam tablets during later stages of pregnancy can result in sedation (respiratory depression, lethargy, hypotonia) and withdrawal symptoms (hyperreflexia, irritability, restlessness, tremors, inconsolable crying, and feeding difficulties) in the neonate. Observe newborns for signs of sedation and neonatal withdrawal syndrome and manage accordingly [see USE IN SPECIFIC POPULATIONS (8.1)].

### 5.6 Interaction with Drugs that Inhibit Metabolism via Cytochrome P450 3A

The initial step in alprazolam metabolism is hydroxylation catalyzed by cytochrome P450 3A (CYP3A). Drugs that inhibit this metabolic pathway may have a profound effect on the clearance of alprazolam.

## Strong CYP3A Inhibitors

Alprazolam tablets are contraindicated in patients receiving strong inhibitors of CYP3A (such as azole antifungal agents), except ritonavir [see CONTRAINDICATIONS (4)]. Ketoconazole and itraconazole have been shown in vivo to increase plasma alprazolam concentrations 3.98 fold and 2.70 fold, respectively.

Dosage adjustment is necessary when alprazolam tablets and ritonavir are initiated concomitantly or when ritonavir is added to a stable dosage of alprazolam tablets [see DOSAGE AND ADMINISTRATION (2.6), DRUG INTERACTIONS (7.1)].

Drugs demonstrated to be CYP3A inhibitors on the basis of clinical studies involving alprazolam: nefazodone, fluvoxamine, and cimetidine [see DRUG INTERACTION (7.1), CLINICAL PHARMACOLOGY (12.3)]. Use caution and consider dose reduction of alprazolam tablets, as appropriate, during co-administration with these drugs.

### 5.7 Patients with Depression

Benzodiazepines may worsen depression. Panic disorder has been associated with primary and secondary major depressive disorders and increased reports of suicide among untreated patients. Consequently, appropriate precautions (e.g., limiting the total prescription size and increased monitoring for suicidal ideation) should be considered in patients with depression.

### 5.8 Mania

Episodes of hypomania and mania have been reported in association with the use of alprazolam tablets in patients with depression [see ADVERSE REACTIONS (6.2)].

### 5.9 Risk in Patients with Impaired Respiratory Function

There have been reports of death in patients with severe pulmonary disease shortly after the initiation of treatment with alprazolam tablets. Closely monitor patients with impaired respiratory function. If signs and symptoms of respiratory depression, hypoventilation, or apnea occur, discontinue alprazolam tablets.

## 6. Adverse Reactions

The following clinically significant adverse reactions are described elsewhere in the labeling:

- Risks from Concomitant Use with Opioids [see WARNINGS AND PRECAUTIONS (5.1)]
- Abuse, Misuse, and Addiction [see WARNINGS AND PRECAUTIONS (5.2)]
- Dependence and Withdrawal Reactions [see WARNINGS AND PRECAUTIONS (5.3)]
- Effects on Driving and Operating Machinery [see WARNINGS AND PRECAUTIONS (5.4)]
- Neonatal Sedation and Withdrawal Syndrome [see WARNINGS AND PRECAUTIONS (5.5)]
- Patients with Depression [see WARNINGS AND PRECAUTIONS (5.7)]
- Risks in Patients with Impaired Respiratory Function [see WARNINGS AND PRECAUTIONS (5.9)]

### 6.1 Clinical Trials Experience

Because clinical trials are conducted under widely varying conditions, adverse reaction

rates observed in the clinical trials of a drug cannot be directly compared to rates in the clinical trials of another drug and may not reflect the rates observed in practice.

The data in the two tables below are estimates of adverse reaction incidence among adult patients who participated in:

- 4-week placebo-controlled clinical studies with alprazolam tablets dosages up to 4 mg per day for the acute treatment of generalized anxiety disorder (Table 1)
- Short-term (up to 10 weeks) placebo-controlled clinical studies with alprazolam tablets dosages up to 10 mg per day for panic disorder, with or without agoraphobia (Table 2).

Table 1: Adverse Reactions Occurring in  $\geq 1\%$  in Alprazolam Tablets-treated Patients and Greater than Placebo-treated Patients in Placebo-Controlled Trials for Generalized Anxiety

| <b>Alprazolam tablets<br/>n=565</b>    | <b>Placebo<br/>n=505</b> |     |
|--|--------------------------|-----|
| Nervous system disorders               |                          |     |
| Drowsiness                             | 41%                      | 22% |
| Light-headedness                       | 21%                      | 19% |
| Dizziness                              | 2%                       | 1%  |
| Akathisia                              | 2%                       | 1%  |
| Gastrointestinal disorders             |                          |     |
| Dry mouth                              | 15%                      | 13% |
| Increased salivation                   | 4%                       | 2%  |
| Cardiovascular disorders               |                          |     |
| Hypotension                            | 5%                       | 2%  |
| Skin and subcutaneous tissue disorders |                          |     |
| Dermatitis/allergy                     | 4%                       | 3%  |

In addition to the adverse reactions (i.e., greater than 1%) enumerated in the table above for patients with generalized anxiety disorder, the following adverse reactions have been reported in association with the use of benzodiazepines: dystonia, irritability, concentration difficulties, anorexia, transient amnesia or memory impairment, loss of coordination, fatigue, seizures, sedation, slurred speech, jaundice, musculoskeletal weakness, pruritus, diplopia, dysarthria, changes in libido, menstrual irregularities, incontinence and urinary retention.

Table 2: Adverse Reactions Occurring in  $\geq 1\%$  in Alprazolam Tablets-treated Patients and Greater than Placebo-treated Patients in Placebo-Controlled Trials (Up to 10 Weeks) for Panic Disorder

| <b>Alprazolam Tablets<br/>n=1388</b> | <b>Placebo<br/>n=1231</b> |     |
|--------------------------------------|---------------------------|-----|
| Drowsiness                           | 77%                       | 43% |
| Fatigue and Tiredness                | 49%                       | 42% |
| Impaired Coordination                | 40%                       | 18% |
| Irritability                         | 33%                       | 30% |

|  |     |     |
|--|-----|-----|
| Memory Impairment                      | 33% | 22% |
| Cognitive Disorder                     | 29% | 21% |
| Decreased Libido                       | 14% | 8%  |
| Dysarthria                             | 23% | 6%  |
| Confusional state                      | 10% | 8%  |
| Increased libido                       | 8%  | 4%  |
| Change in libido (not specified)       | 7%  | 6%  |
| Disinhibition                          | 3%  | 2%  |
| Talkativeness                          | 2%  | 1%  |
| Derealization                          | 2%  | 1%  |
| Gastrointestinal disorders             |     |     |
| Constipation                           | 26% | 15% |
| Increased salivation                   | 6%  | 4%  |
| Skin and subcutaneous tissue disorders |     |     |
| Rash                                   | 11% | 8%  |
| Other                                  |     |     |
| Increased appetite                     | 33% | 23% |
| Decreased appetite                     | 28% | 24% |
| Weight gain                            | 27% | 18% |
| Weight loss                            | 23% | 17% |
| Micturition difficulties               | 12% | 9%  |
| Menstrual disorders                    | 11% | 9%  |
| Sexual dysfunction                     | 7%  | 4%  |
| Incontinence                           | 2%  | 1%  |

In addition to the reactions (i.e., greater than 1%) enumerated in the table above for patients with panic disorder, the following adverse reactions have been reported in association with the use of alprazolam tablets: seizures, hallucinations, depersonalization, taste alterations, diplopia, elevated bilirubin, elevated hepatic enzymes, and jaundice.

#### Adverse Reactions Reported as Reasons for Discontinuation in Treatment of Panic Disorder in Placebo-Controlled Trials

In a larger database comprised of both controlled and uncontrolled studies in which 641 patients received alprazolam tablets, discontinuation-emergent symptoms which occurred at a rate of over 5% in patients treated with alprazolam tablets and at a greater rate than the placebo-treated group are shown in Table 3.

Table 3: Discontinuation-Emergent Symptom Incidence Reported in  $\geq 5\%$  of Alprazolam Tablets-treated Patients and  $>$  Placebo-treated Patients

|                               |       |
|-------------------------------|-------|
| Nervous system disorders      |       |
| Insomnia                      | 29.5% |
| Light-headedness              | 19.3% |
| Abnormal involuntary movement | 17.3% |
| Headache                      | 17.0% |
| Muscular twitching            | 6.9%  |



|                                    |       |
|------------------------------------|-------|
| Impaired coordination              | 6.6%  |
| Muscle tone disorders              | 5.9%  |
| Weakness                           | 5.8%  |
| Psychiatric disorders              |       |
| Anxiety                            | 19.2% |
| Fatigue and Tiredness              | 18.4% |
| Irritability                       | 10.5% |
| Cognitive disorder                 | 10.3% |
| Memory impairment                  | 5.5%  |
| Depression                         | 5.1%  |
| Confusional state                  | 5.0%  |
| Gastrointestinal disorders         |       |
| Nausea/Vomiting                    | 16.5% |
| Diarrhea                           | 13.6% |
| Decreased salivation               | 10.6% |
| Metabolism and nutrition disorders |       |
| Weight loss                        | 13.3% |
| Decreased appetite                 | 12.8% |
| Dermatological disorders           |       |
| Sweating                           | 14.4% |
| Cardiovascular disorders           |       |
| Tachycardia                        | 12.2% |
| Special Senses                     |       |
| Blurred vision                     | 10.0% |

---

n=number of patients.

There have also been reports of withdrawal seizures upon rapid decrease or abrupt discontinuation of alprazolam tablets [see WARNING AND PRECAUTIONS (5.2) and DRUG ABUSE AND DEPENDENCE (9.3)]. Paradoxical reactions such as stimulation, increased muscle spasticity, sleep disturbances, hallucinations, and other adverse behavioral effects such as agitation, rage, irritability, and aggressive or hostile behavior have been reported rarely. In many of the spontaneous case reports of adverse behavioral effects, patients were receiving other CNS drugs concomitantly and/or were described as having underlying psychiatric conditions. Should any of the above events occur, alprazolam should be discontinued. Isolated published reports involving small numbers of patients have suggested that patients who have borderline personality disorder, a prior history of violent or aggressive behavior, or alcohol or substance abuse may be at risk for such events. Instances of irritability, hostility, and intrusive thoughts have been reported during discontinuation of alprazolam in patients with post-traumatic stress disorder.

## 6.2 Postmarketing Experience

The following adverse reactions have been identified during postapproval use of alprazolam tablets. Because these reactions are reported voluntarily from a population of uncertain size, it is not always possible to reliably estimate their frequency or establish a causal relationship to drug exposure.

Endocrine disorders: Hyperprolactinemia

General disorders and administration site conditions: Edema peripheral

Hepatobiliary disorders: Hepatitis, hepatic failure

Investigations: Liver enzyme elevations

Psychiatric disorders: Hypomania, mania

Reproductive system and breast disorders: Gynecomastia, galactorrhea

Skin and subcutaneous tissue disorders: Photosensitivity reaction, angioedema, Stevens-Johnson syndrome

## 7. Drug Interactions

### 7.1 Drugs Having Clinically Important Interactions with Alprazolam Tablets

Table 4 includes clinically significant drug interactions with alprazolam tablets [see CLINICAL PHARMACOLOGY (12.3)].

Table 4: Clinically Significant Drug Interactions with Alprazolam Tablets

---

#### Opioids

**Clinical implication** The concomitant use of benzodiazepines and opioids increases the risk of respiratory depression because of actions at different receptor sites in the CNS that control respiration. Benzodiazepines interact at gamma-aminobutyric acid (GABAA) sites and opioids interact primarily at mu receptors. When benzodiazepines and opioids are combined, the potential for benzodiazepines to significantly worsen opioid-related respiratory depression exists.

**Prevention or management** Limit dosage and duration of concomitant use of alprazolam tablets and opioids, and monitor patients closely for respiratory depression and sedation [see WARNINGS AND PRECAUTIONS (5.1)].

**Examples** Morphine, buprenorphine, hydromorphone, oxycodone, oxycodone, fentanyl, methadone, alfentanil, butorpenol, codeine, dihydrocodeine, meperidine, pentazocine, remifentanil, sufentanil, tapentadol, tramadol.

#### CNS Depressants

**Clinical implication** The benzodiazepines, including alprazolam, produce additive CNS depressant effects when coadministered with other CNS depressants.

**Prevention or management** Limit dosage and duration of alprazolam tablets during concomitant use with CNS depressants [see WARNINGS AND PRECAUTIONS (5.3)].

**Examples** Psychotropic medications, anticonvulsants, antihistaminics, ethanol, and other drugs which themselves produce CNS depression.

#### Strong Inhibitors of CYP3A (except ritonavir)

**Clinical implication** Concomitant use of alprazolam tablets with strong CYP3A inhibitors has a profound effect on the clearance of alprazolam, resulting in increased concentrations of alprazolam and increased risk of adverse reactions [see CLINICAL PHARMACOLOGY (12.3)].

**Prevention** Concomitant use of alprazolam tablets with a strong CYP3A4 inhibitor

|                                      |  |
|--------------------------------------|--|
| or                                   | (except ritonavir) is contraindicated [see CONTRAINDICATIONS (4),<br>management WARNINGS AND PRECAUTIONS (5.5)].   |
| Examples                             | Ketoconazole, itraconazole, clarithromycin   |
| Moderate or Weak Inhibitors of CYP3A |  |
| Clinical<br>implication              | Concomitant use of alprazolam tablets with CYP3A inhibitors may increase<br>the concentrations of alprazolam tablets, resulting in increased risk of<br>adverse reactions of alprazolam [see CLINICAL PHARMACOLOGY (12.3)].  |
| Prevention<br>or<br>management       | Avoid use and consider appropriate dose reduction when alprazolam<br>tablets is coadministered with a moderate or weak CYP3A inhibitor [see<br>WARNINGS AND PRECAUTIONS (5.5)].  |
| Examples                             | Nefazodone, fluvoxamine, cimetidine, erythromycin  |
| CYP3A Inducers                       |  |
| Clinical<br>implication              | Concomitant use of CYP3A inducers can increase alprazolam metabolism<br>and therefore can decrease plasma levels of alprazolam [see CLINICAL<br>PHARMACOLOGY (12.3)].  |
| Prevention<br>or<br>management       | Caution is recommended during coadministration with alprazolam tablets.  |
| Examples                             | Carbamazepine, phenytoin   |
| Ritonavir                            |  |
| Clinical<br>implication              | Interactions involving ritonavir and alprazolam are complex and time<br>dependent. Short term administration of ritonavir increased alprazolam<br>exposure due to CYP3A4 inhibition. Following long term treatment of<br>ritonavir (>10 to 14 days), CYP3A4 induction offsets this inhibition.<br>Alprazolam exposure was not meaningfully affected in the presence of<br>ritonavir.   |
| Prevention<br>or<br>management       | Reduce alprazolam tablets dosage when ritonavir and alprazolam are<br>initiated concomitantly, or when ritonavir is added to a regimen where<br>alprazolam is stabilized.<br>Increase alprazolam tablets dosage to the target dosage after 10 to 14<br>days of dosing ritonavir and alprazolam tablets concomitantly. No dosage<br>adjustment of alprazolam tablets is necessary in patients receiving ritonavir<br>for more than 10 to 14 days [see DOSAGE AND ADMINISTRATION (2.6)].<br>Concomitant use of alprazolam tablets with a strong CYP3A inhibitor,<br>except ritonavir, is contraindicated [see CONTRAINDICATIONS (4),<br>WARNINGS AND PRECAUTIONS (5.5)]. |
| Digoxin                              |  |
| Clinical<br>implication              | Increased digoxin concentrations have been reported when alprazolam<br>was given, especially in geriatric patients (>65 years of age).   |
| Prevention<br>or<br>management       | In patients on digoxin therapy, measure serum digoxin concentrations<br>before initiating alprazolam tablets. Continue monitoring digoxin serum<br>concentration and toxicity frequently. Reduce the digoxin dose if<br>necessary.   |

## 7.2 Drug/Laboratory Test Interactions

Although interactions between benzodiazepines and commonly employed clinical laboratory tests have occasionally been reported, there is no consistent pattern for a specific drug or specific test.

## 8. Use in Specific Populations

### 8.1 Pregnancy

#### Pregnancy Exposure Registry

There is a pregnancy exposure registry that monitors pregnancy outcomes in women exposed to alprazolam tablets during pregnancy. Healthcare providers are encouraged to register patients by calling the National Pregnancy Registry for Other Psychiatric Medications at 1-866-961-2388 or visiting online at <https://womensmentalhealth.org/clinical-and-research-programs/pregnancyregistry/othermedications/>.

#### Risk Summary

Neonates born to mothers using benzodiazepines during the later stages of pregnancy have been reported to experience symptoms of sedation and neonatal withdrawal [see WARNINGS AND PRECAUTIONS (5.4), CLINICAL CONSIDERATIONS)]. Overall available data from published observational studies of pregnant women exposed to alprazolam have not established a drug-associated risk of major birth defects, miscarriage, or adverse maternal or fetal outcomes (see DATA).

The estimated background risk of major birth defects and miscarriage for the indicated population is unknown. All pregnancies have a background risk of birth defect, loss, or other adverse outcomes. In the U.S. general population, the estimated risk of major birth defects and of miscarriage in clinically recognized pregnancies is 2% to 4% and 15% to 20%, respectively.

#### Clinical Considerations

##### Fetal/Neonatal adverse reactions

Benzodiazepines cross the placenta and may produce respiratory depression and sedation in neonates. Monitor neonates exposed to benzodiazepines during pregnancy and labor for signs of sedation, respiratory depression, withdrawal, and feeding problems and manage accordingly [see WARNINGS AND PRECAUTIONS (5.4)].

#### Data

##### Human Data

Published data from observational studies on the use of benzodiazepines during pregnancy do not report a clear association with benzodiazepines and major birth defects. Although early studies reported an increased risk of congenital malformations with diazepam and chlordiazepoxide, there was no consistent pattern noted. In addition, the majority of recent case-control and cohort studies of benzodiazepine use during pregnancy, which were adjusted for confounding exposures to alcohol, tobacco, and other medications, have not confirmed these findings. At this time, there is no clear evidence that alprazolam exposure in early pregnancy can cause major birth defects. Neonates exposed to benzodiazepines during the late third trimester of pregnancy or during labor have been reported to exhibit sedation and neonatal withdrawal symptoms.

### 8.2 Lactation

#### Risk Summary

Limited data from published literature reports the presence of alprazolam in human

breast milk. There are reports of sedation and withdrawal symptoms in breastfed neonates and infants exposed to alprazolam. The effects of alprazolam on lactation are unknown.

Because of the potential for serious adverse reactions, including sedation and withdrawal symptoms in breastfed neonates and infants, advise patients that breastfeeding is not recommended during treatment with alprazolam tablets.

#### 8.4 Pediatric Use

Safety and effectiveness of alprazolam tablets have not been established in pediatric patients.

#### 8.5 Geriatric Use

Alprazolam-treated geriatric patients had higher plasma concentrations of alprazolam (due to reduced clearance) compared to younger adult patients receiving the same doses. Therefore, dosage reduction of alprazolam tablets is recommended in geriatric patients [see DOSAGE AND ADMINISTRATION (2.4) and CLINICAL PHARMACOLOGY (12.3)].

#### 8.6 Hepatic Impairment

Patients with alcoholic liver disease exhibit a longer elimination half-life (19.7 hours), compared to healthy subjects (11.4 hours). This may be caused by decreased clearance of alprazolam in patients with alcoholic liver disease. Dosage reduction of alprazolam tablets is recommended in patients with hepatic impairment [see DOSAGE AND ADMINISTRATION (2.4), CLINICAL PHARMACOLOGY (12.3)].

## 9. Drug Abuse and Dependence

### 9.1 Controlled Substance

Alprazolam tablets contain alprazolam, which is a Schedule IV controlled substance.

### 9.2 Abuse

Alprazolam tablets are a benzodiazepine and a CNS depressant with a potential for abuse and addiction. Abuse is the intentional, non-therapeutic use of a drug, even once, for its desirable psychological or physiological effects. Misuse is the intentional use, for therapeutic purposes, of a drug by an individual in a way other than prescribed by a health care provider or for whom it was not prescribed. Drug addiction is a cluster of behavioral, cognitive, and physiological phenomena that may include a strong desire to take the drug, difficulties in controlling drug use (e.g., continuing drug use despite harmful consequences, giving a higher priority to drug use than other activities and obligations), and possible tolerance or physical dependence. Even taking benzodiazepines as prescribed may put patients at risk for abuse and misuse of their medication. Abuse and misuse of benzodiazepines may lead to addiction.

Abuse and misuse of benzodiazepines often (but not always) involve the use of doses greater than the maximum recommended dosage and commonly involve concomitant use of other medications, alcohol, and/or illicit substances, which is associated with an increased frequency of serious adverse outcomes, including respiratory depression, overdose, or death. Benzodiazepines are often sought by individuals who abuse drugs and other substances, and by individuals with addictive disorders [see WARNINGS AND PRECAUTIONS (5.2)].

The following adverse reactions have occurred with benzodiazepine abuse and/or

misuse: abdominal pain, amnesia, anorexia, anxiety, aggression, ataxia, blurred vision, confusion, depression, disinhibition, disorientation, dizziness, euphoria, impaired concentration and memory, indigestion, irritability, muscle pain, slurred speech, tremors, and vertigo.

The following severe adverse reactions have occurred with benzodiazepine abuse and/or misuse: delirium, paranoia, suicidal ideation and behavior, seizures, coma, breathing difficulty, and death. Death is more often associated with polysubstance use (especially benzodiazepines with other CNS depressants such as opioids and alcohol).

### 9.3 Dependence

Alprazolam tablets may produce physical dependence from continued therapy. Physical dependence is a state that develops as a result of physiological adaptation in response to repeated drug use, manifested by withdrawal signs and symptoms after abrupt discontinuation or a significant dose reduction of a drug. Abrupt discontinuation or rapid dosage reduction of benzodiazepines or administration of flumazenil, a benzodiazepine antagonist, may precipitate acute withdrawal reactions, including seizures, which can be life-threatening. Patients at an increased risk of withdrawal adverse reactions after benzodiazepine discontinuation or rapid dosage reduction include those who take higher dosages (i.e., higher and/or more frequent doses) and those who have had longer durations of use [see WARNINGS AND PRECAUTIONS (5.3)].

To reduce the risk of withdrawal reactions, use a gradual taper to discontinue alprazolam tablets or reduce the dosage [see DOSAGE AND ADMINISTRATION (2.3), WARNINGS AND PRECAUTIONS (5.3)].

### Acute Withdrawal Signs and Symptoms

Acute withdrawal signs and symptoms associated with benzodiazepines have included abnormal involuntary movements, anxiety, blurred vision, depersonalization, depression, derealization, dizziness, fatigue, gastrointestinal adverse reactions (e.g., nausea, vomiting, diarrhea, weight loss, decreased appetite), headache, hyperacusis, hypertension, irritability, insomnia, memory impairment, muscle pain and stiffness, panic attacks, photophobia, restlessness, tachycardia, and tremor. More severe acute withdrawal signs and symptoms, including life-threatening reactions, have included catatonia, convulsions, delirium tremens, depression, hallucinations, mania, psychosis, seizures, and suicidality.

### Protracted Withdrawal Syndrome

Protracted withdrawal syndrome associated with benzodiazepines is characterized by anxiety, cognitive impairment, depression, insomnia, formication, motor symptoms (e.g., weakness, tremor, muscle twitches), paresthesia, and tinnitus that persists beyond 4 to 6 weeks after initial benzodiazepine withdrawal. Protracted withdrawal symptoms may last weeks to more than 12 months. As a result, there may be difficulty in differentiating withdrawal symptoms from potential re-emergence or continuation of symptoms for which the benzodiazepine was being used.

### Tolerance

Tolerance to alprazolam tablets may develop from continued therapy. Tolerance is a physiological state characterized by a reduced response to a drug after repeated administration (i.e., a higher dose of a drug is required to produce the same effect that was once obtained at a lower dose). Tolerance to the therapeutic effect of alprazolam

tablets may develop; however, little tolerance develops to the amnestic reactions and other cognitive impairments caused by benzodiazepines.

## **10. Overdosage**

### **10.1 Clinical Experience**

Manifestations of alprazolam overdosage include somnolence, confusion, impaired coordination, diminished reflexes, and coma. Death has been reported in association with overdoses of alprazolam by itself, as it has with other benzodiazepines. In addition, fatalities have been reported in patients who have overdosed with a combination of a single benzodiazepine, including alprazolam, and alcohol; alcohol levels seen in some of these patients have been lower than those usually associated with alcohol-induced fatality.

### **10.2 Management of Overdose**

In case of an overdosage, consult a Certified Poison Control Center at 1-800-222-1222 for latest recommendations.

As in all cases of drug overdosage, respiration, pulse rate, and blood pressure should be monitored. General supportive measures should be employed, along with immediate gastric lavage. Intravenous fluids should be administered and an adequate airway maintained. As with the management of intentional overdosing with any drug, it should be borne in mind that multiple agents may have been ingested.

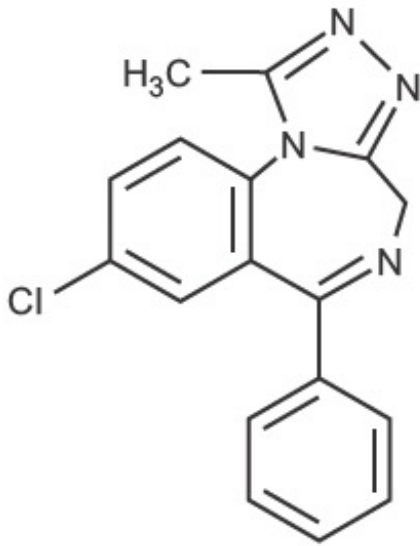
Flumazenil may be useful in situations when an overdose with a benzodiazepine is known or suspected. Prior to the administration of flumazenil, necessary measures should be instituted to secure airway, ventilation, and intravenous access. Flumazenil is intended as an adjunct to, not as a substitute for, proper management of benzodiazepine overdose. Patients treated with flumazenil should be monitored for re-sedation, respiratory depression, and other residual benzodiazepine effects for an appropriate period after treatment. The prescriber should be aware of a risk of seizure in association with flumazenil treatment, particularly in long-term benzodiazepine users and in cyclic antidepressant overdose. The complete flumazenil package insert should be consulted prior to use.

## **11. Description**

Alprazolam Tablets, USP, contain alprazolam which is a triazolo analog of the 1,4 benzodiazepine class of central nervous system-active compounds.

The chemical name of alprazolam is 8-Chloro-1-methyl-6-phenyl-4H-s-triazolo [4,3- $\alpha$ ] [1,4] benzodiazepine.




The structural formula is:



Alprazolam is a white crystalline powder, which is soluble in methanol or ethanol but which has no appreciable solubility in water at physiological pH.

Each Alprazolam tablet, USP, for oral administration, contains 0.25 mg, 0.5 mg, 1 mg, or 2 mg of alprazolam.

Alprazolam Tablets, USP, 2 mg, are multi-scored and may be divided as shown below:

|   |   |   |
|---|---|---|
|  |  |  |
| Complete 2 mg<br>Tablet   | Two 1 mg<br>segments  | Four 0.5 mg<br>segments   |

Inactive ingredients: Lactose monohydrate, microcrystalline cellulose, sodium starch glycolate, hydroxyl propyl cellulose, sodium lauryl sulfate and magnesium stearate. In addition, the 0.5 mg tablet contains FD&C Yellow 6 lake and the 1 mg and 2 mg tablets contain FD&C Blue 2 lake.

## 12. Clinical Pharmacology

### 12.1 Mechanism of Action

Alprazolam is a 1,4 benzodiazepine. Alprazolam exerts its effect for the acute treatment of generalized anxiety disorder and panic disorder through binding to the benzodiazepine site of gamma-aminobutyric acid-A (GABAA) receptors in the brain and enhances GABA-mediated synaptic inhibition.

### 12.3 Pharmacokinetics

Plasma levels of alprazolam increase proportionally to the dose over the range of 0.5 to 3.0 mg.

#### Absorption

Following oral administration, peak plasma concentration of alprazolam ( $C_{max}$ ) occurs in 1 to 2 hours post dose.

#### Distribution



Alprazolam is 80% bound to human serum protein, and albumin accounts for the majority of the binding.

### Elimination

The mean plasma elimination half-life (T<sub>1/2</sub>) of alprazolam is approximately 11.2 hours (range: 6.3 to 26.9 hours) in healthy adults.

### Metabolism

Alprazolam is extensively metabolized in humans, primarily by cytochrome P450 3A4 (CYP3A4), to 2 major active metabolites in the plasma: 4-hydroxyalprazolam and  $\alpha$ -hydroxyalprazolam. The plasma circulation levels of the two active metabolites are less than 4% of the parent. The reported relative potencies in benzodiazepine receptor binding experiments and in animal models of induced seizure inhibition are 0.20 and 0.66, respectively, for 4-hydroxyalprazolam and  $\alpha$ -hydroxyalprazolam. The low concentrations and low potencies of 4-hydroxyalprazolam and  $\alpha$ -hydroxyalprazolam indicate that they unlikely contribute much to the effects of alprazolam. A benzophenone derived from alprazolam is also found in humans. Their half-lives appear to be similar to that of alprazolam.

### Excretion

Alprazolam and its metabolites are excreted primarily in the urine.

### Specific Populations

#### Geriatric Patients

The mean T<sub>1/2</sub> of alprazolam was 16.3 hours (range: 9.0 to 26.9 hours) in healthy elderly subjects compared to 11.0 hours (range: 6.3 to 15.8 hours, n=16) in healthy younger adult subjects.

#### Obese Patients

The mean T<sub>1/2</sub> of alprazolam was 21.8 hours (range: 9.9 to 40.4 hours) in a group of obese subjects.

#### Patients with Hepatic Impairment

The mean T<sub>1/2</sub> of alprazolam was 19.7 hours (range: 5.8 to 65.3 hours) in patients with alcoholic liver disease.

#### Racial or Ethnic Groups

Maximal concentrations and T<sub>1/2</sub> of alprazolam are approximately 15% and 25% higher in Asians compared to Caucasians.

#### Smoking

Alprazolam concentrations may be reduced by up to 50% in smokers compared to non-smokers.

### Drug Interaction Studies

#### In Vivo Studies

Most of the interactions that have been documented with alprazolam are with drugs that modulate CYP3A4 activity.

Compounds that are inhibitors or inducers of CYP3A would be expected to increase or decrease plasma alprazolam concentrations, respectively. Drug products that have been studied in vivo, along with their effect on increasing alprazolam AUC, are as follows: ketoconazole, 3.98 fold; itraconazole, 2.66 fold; nefazodone, 1.98 fold; fluvoxamine, 1.96 fold; and erythromycin, 1.61 fold [see CONTRAINDICATIONS (4), WARNINGS AND PRECAUTIONS (5.5), DRUG INTERACTIONS (7.2)]. Other studied drugs include:

**Cimetidine:** Coadministration of cimetidine increased the maximum plasma concentration of alprazolam by 82%, decreased clearance by 42%, and increased T<sub>1/2</sub> by 16%.

**Fluoxetine:** Coadministration of fluoxetine with alprazolam increased the maximum plasma concentration of alprazolam by 46%, decreased clearance by 21%, increased T<sub>1/2</sub> by 17%, and decreased measured psychomotor performance.

**Oral Contraceptives:** Coadministration of oral contraceptives increased the maximum plasma concentration of alprazolam by 18%, decreased clearance by 22%, and increased T<sub>1/2</sub> by 29%.

**Carbamazepine:** The oral clearance of alprazolam (given in a 0.8 mg single dose) was increased from 0.90±0.21 mL/min/kg to 2.13±0.54 mL/min/kg and the elimination T<sub>1/2</sub> was shortened (from 17.1±4.9 to 7.7±1.7 hour) following administration of 300 mg per day carbamazepine for 10 days [see DRUG INTERACTIONS (7.2)]. However, the carbamazepine dose used in this study was fairly low compared to the recommended doses (1000-1200 mg per day); the effect at usual carbamazepine doses is unknown.

**Ritonavir:** Interactions involving HIV protease inhibitors (e.g., ritonavir) and alprazolam are complex and time dependent. Short-term low doses of ritonavir (4 doses of 200 mg) increased mean AUC of alprazolam by about 2.5-fold, and did not significantly affect C<sub>max</sub> of alprazolam. The elimination T<sub>1/2</sub> was prolonged (30 hours versus 13 hours). However, upon extended exposure to ritonavir (500 mg, twice daily for 10 days), CYP3A induction offset this inhibition. Alprazolam AUC and C<sub>max</sub> was reduced by 12% and 16%, respectively, in the presence of ritonavir. The elimination T<sub>1/2</sub> of alprazolam was not significantly changed [see WARNINGS AND PRECAUTIONS (5.5)].

**Sertraline:** A single dose of alprazolam 1 mg and steady state dose of sertraline (50 mg to 150 mg per day) did not reveal any clinically significant changes in the pharmacokinetics of alprazolam.

**Imipramine and Desipramine:** The steady state plasma concentrations of imipramine and desipramine have been reported to be increased an average of 31% and 20%, respectively, by the concomitant administration of alprazolam tablets in doses up to 4 mg per day.

**Warfarin:** Alprazolam did not affect the prothrombin or plasma warfarin levels in male volunteers administered sodium warfarin orally.

#### In Vitro Studies

Data from in vitro studies of alprazolam suggest a possible drug interaction of alprazolam with paroxetine. The ability of alprazolam to induce human hepatic enzyme systems has not yet been determined.

### 13. Non Clinical Toxicology

### 14.1 Generalized Anxiety Disorder

Alprazolam tablets were compared to placebo in double-blind clinical studies (doses up to 4 mg per day) in patients with a diagnosis of anxiety or anxiety with associated depressive symptomatology. Alprazolam tablets were significantly better than placebo at each of the evaluation periods of these 4-week studies as judged by the following psychometric instruments: Physician's Global Impressions, Hamilton Anxiety Rating Scale, Target Symptoms, Patient's Global Impressions, and Self-Rating Symptom Scale.

### 14.2 Panic Disorder

The effectiveness of alprazolam tablets in the treatment of panic disorder was studied in 3 short-term, placebo-controlled studies (up to 10 weeks) in patients with diagnoses closely corresponding to DSM-III-R criteria for panic disorder.

The average dose of alprazolam tablets was 5 mg to 6 mg per day in 2 of the studies, and the doses of alprazolam tablets were fixed at 2 mg and 6 mg per day in the third study. In all 3 studies, alprazolam tablets were superior to placebo on a variable defined as "the number of patients with zero panic attacks" (range, 37% to 83% met this criterion), as well as on a global improvement score. In 2 of the 3 studies, alprazolam tablets were superior to placebo on a variable defined as "change from baseline on the number of panic attacks per week" (range, 3.3 to 5.2), and also on a phobia rating scale. A subgroup of patients who improved on alprazolam tablets during short-term treatment in 1 of these trials was continued on an open basis up to 8 months, without apparent loss of benefit.

## 14. Clinical Studies

### 14.1 Generalized Anxiety Disorder

Alprazolam tablets were compared to placebo in double-blind clinical studies (doses up to 4 mg per day) in patients with a diagnosis of anxiety or anxiety with associated depressive symptomatology. Alprazolam tablets were significantly better than placebo at each of the evaluation periods of these 4-week studies as judged by the following psychometric instruments: Physician's Global Impressions, Hamilton Anxiety Rating Scale, Target Symptoms, Patient's Global Impressions, and Self-Rating Symptom Scale.

### 14.2 Panic Disorder

The effectiveness of alprazolam tablets in the treatment of panic disorder was studied in 3 short-term, placebo-controlled studies (up to 10 weeks) in patients with diagnoses closely corresponding to DSM-III-R criteria for panic disorder.

The average dose of alprazolam tablets was 5 mg to 6 mg per day in 2 of the studies, and the doses of alprazolam tablets were fixed at 2 mg and 6 mg per day in the third study. In all 3 studies, alprazolam tablets were superior to placebo on a variable defined as "the number of patients with zero panic attacks" (range, 37% to 83% met this criterion), as well as on a global improvement score. In 2 of the 3 studies, alprazolam tablets were superior to placebo on a variable defined as "change from baseline on the number of panic attacks per week" (range, 3.3 to 5.2), and also on a phobia rating scale. A subgroup of patients who improved on alprazolam tablets during short-term treatment in 1 of these trials was continued on an open basis up to 8 months, without apparent loss of benefit.

## 16. How Supplied/Storage and Handling

Alprazolam Tablets, USP, are supplied in the following strengths and package configurations:

Bottles of 60 Tablets: NDC 80425-0161-02

Store at controlled room temperature 20° to 25°C (68° to 77°F) [see USP Controlled Room Temperature].

Protect from light. Dispense in tight (USP), light-resistant, child-resistant containers.

## **17. Patient Counseling Information**

Advise the patient to read the FDA-approved patient labeling (Medication Guide).

### **Risks from Concomitant Use with Opioids**

Advise both patients and caregivers about the risks of potentially fatal respiratory depression and sedation when alprazolam tablets are used with opioids and not to use such drugs concomitantly unless supervised by a healthcare provider. Advise patients not to drive or operate heavy machinery until the effects of concomitant use with the opioid have been determined [see WARNINGS AND PRECAUTIONS (5.1), DRUG INTERACTIONS (7.1)].

### **Abuse, Misuse, and Addiction**

Inform patients that the use of alprazolam tablets, even at recommended dosages, exposes users to risks of abuse, misuse, and addiction, which can lead to overdose and death, especially when used in combination with other medications (e.g., opioid analgesics), alcohol, and/or illicit substances. Inform patients about the signs and symptoms of benzodiazepine abuse, misuse, and addiction; to seek medical help if they develop these signs and/or symptoms; and on the proper disposal of unused drug [see WARNINGS AND PRECAUTIONS (5.2), DRUG ABUSE AND DEPENDENCE (9.2)].

### **Withdrawal Reactions**

Inform patients that the continued use of alprazolam tablets may lead to clinically significant physical dependence and that abrupt discontinuation or rapid dosage reduction of alprazolam tablets may precipitate acute withdrawal reactions, which can be life-threatening. Inform patients that in some cases, patients taking benzodiazepines have developed a protracted withdrawal syndrome with withdrawal symptoms lasting weeks to more than 12 months. Instruct patients that discontinuation or dosage reduction of alprazolam tablets may require a slow taper [see WARNINGS AND PRECAUTIONS (5.3), DRUG ABUSE AND DEPENDENCE (9.3)].

### **Effects on Driving and Operating Machinery**

Advise patients not to drive a motor vehicle or operate heavy machinery while taking alprazolam tablets due to its CNS depressant effects. Also advise patients to avoid use of alcohol or other CNS depressants while taking alprazolam tablets [see WARNINGS AND PRECAUTIONS (5.3)].

### **Patients with Depression**

Advise patients, their families, and caregivers to look for signs of suicidality or worsening depression, and to inform the patient's healthcare provider immediately [see WARNINGS

AND PRECAUTIONS (5.6)].

#### Concomitant Medications

Advise patients to inform their healthcare provider of all medicines they take, including prescription and nonprescription medications, vitamins and herbal supplements [see DRUG INTERACTIONS (7)].

#### Pregnancy

Benzodiazepines cross the placenta and may produce respiratory depression and sedation in neonates. Advise mothers using alprazolam tablets to monitor neonates for signs of sedation, respiratory depression, withdrawal symptoms, and feeding problems. Instruct patients to inform their healthcare provider if they are pregnant or intend to become pregnant during treatment with alprazolam tablets [see WARNINGS AND PRECAUTIONS (5.4)]. Advise patients that there is a pregnancy exposure registry that monitors pregnancy outcomes in women exposed to alprazolam tablets during pregnancy [see USE IN SPECIFIC POPULATIONS (8.1)].

#### Lactation

Advise women not to breastfeed during treatment with alprazolam tablets [see USE IN SPECIFIC POPULATIONS (8.2)].

#### Manufactured By:

Centaur Pharmaceuticals Pvt. Ltd.  
Pune - 411057, INDIA.

#### Distributed by:

Breckenridge Pharmaceutical, Inc.  
Berlin, CT 06037

211262

#### Distributed by:

Advanced Rx Pharmacy LLC. Nashville, TN 37211.

## **Medication Guide Section**

### MEDICATION GUIDE

#### MEDICATION GUIDE

Alprazolam (al pra' zoe lam)  
Tablets, USP, C-IV

What is the most important information I should know about alprazolam tablets?

Alprazolam tablets are a benzodiazepine medicine. Taking benzodiazepines with opioid medicines, alcohol, or other central nervous system (CNS) depressants (including street drugs) can cause severe drowsiness, breathing problems (respiratory depression), coma and death. Get emergency help right away if any of the following happens:

shallow or slowed breathing  
breathing stops (which may lead to the heart stopping)

excessive sleepiness (sedation)

Do not drive or operate heavy machinery until you know how taking alprazolam tablets with opioids affects you.

Risk of abuse, misuse, and addiction. There is a risk of abuse, misuse, and addiction with benzodiazepines, including alprazolam tablets, which can lead to overdose and serious side effects including coma and death.

Serious side effects including coma and death have happened in people who have abused or misused benzodiazepines, including alprazolam tablets. These serious side effects may also include delirium, paranoia, suicidal thoughts or actions, seizures, and difficulty breathing. Call your healthcare provider or go to the nearest hospital emergency room right away if you get any of these serious side effects.

You can develop an addiction even if you take alprazolam tablets as prescribed by your healthcare provider.

Take alprazolam tablets exactly as your healthcare provider prescribed.

Do not share your alprazolam tablets with other people.

Keep alprazolam tablets in a safe place and away from children.

Physical dependence and withdrawal reactions. Alprazolam tablets can cause physical dependence and withdrawal reactions.

Do not suddenly stop taking alprazolam tablets. Stopping alprazolam tablets suddenly can cause serious and life-threatening side effects, including, unusual movements, responses, or expressions, seizures, sudden and severe mental or nervous system changes, depression, seeing or hearing things that others do not see or hear, an extreme increase in activity or talking, losing touch with reality, and suicidal thoughts or actions. Call your healthcare provider or go to the nearest hospital emergency room right away if you get any of these symptoms.

Some people who suddenly stop benzodiazepines, have symptoms that can last for several weeks to more than 12 months, including, anxiety, trouble remembering, learning, or concentrating, depression, problems sleeping, feeling like insects are crawling under your skin, weakness, shaking, muscle twitching, burning or prickling feeling in your hands, arms, legs or feet, and ringing in your ears.

Physical dependence is not the same as drug addiction. Your healthcare provider can tell you more about the differences between physical dependence and drug addiction.

Do not take more alprazolam tablets than prescribed or take alprazolam tablets for longer than prescribed.

What are alprazolam tablets?

Alprazolam tablets are a prescription medicine used:

to treat anxiety disorders

for the short-term relief of the symptoms of anxiety

to treat panic disorder with or without a fear of places and situations that might cause panic, helplessness, or embarrassment (agoraphobia)

Alprazolam tablets are a federal controlled substance (C-IV) because they contain alprazolam that can be abused or lead to dependence. Keep alprazolam tablets in a safe place to prevent misuse and abuse. Selling or giving away alprazolam tablets may harm others, and is against the law. Tell your healthcare provider if you have abused or been dependent on alcohol, prescription medicines or street drugs.

It is not known if alprazolam tablets are safe and effective in children.

Elderly patients are especially susceptible to dose related adverse effects when taking alprazolam tablets.

It is not known if alprazolam tablets are safe and effective when used to treat anxiety disorder for longer than 4 months.

It is not known if alprazolam tablets are safe and effective when used to treat panic disorder for longer than 10 weeks.

Do not take alprazolam tablets if:

you are allergic to alprazolam, other benzodiazepines, or any of the ingredients in alprazolam tablets. See the end of this Medication Guide for a complete list of ingredients in alprazolam tablets.

you are taking antifungal medicines including ketoconazole and itraconazole.

Before you take alprazolam tablets, tell your healthcare provider about all of your medical conditions, including if you:

have or have had depression, mood problems, or suicidal thoughts or behavior

have liver or kidney problems

have lung disease or breathing problems

are pregnant or plan to become pregnant. Alprazolam tablets may harm your unborn baby. You and your healthcare provider should decide if you should take alprazolam tablets while you are pregnant.

are breastfeeding or plan to breastfeed. Alprazolam passes into your breast milk and may harm your baby. Talk to your healthcare provider about the best way to feed your baby if you take alprazolam tablets. You should not breastfeed while taking alprazolam tablets.

Tell your healthcare provider about all the medicines you take, including prescription and over-the-counter medicines, vitamins, and herbal supplements.

Taking alprazolam tablets with certain other medicines can cause side effects or affect how well alprazolam tablets or the other medicines work. Do not start or stop other medicines without talking to your healthcare provider.

How should I take alprazolam tablets?

See "WHAT IS THE MOST IMPORTANT INFORMATION I SHOULD KNOW ABOUT ALPRAZOLAM TABLETS?"

Take alprazolam tablets exactly as your healthcare provider tells you to take them. Your healthcare provider will tell you how much alprazolam tablets to take and when to take them.

If you take too much alprazolam tablets, call your healthcare provider or go to the nearest hospital emergency room right away.

What are the possible side effects of alprazolam tablets?

Alprazolam tablets may cause serious side effects, including:

See "WHAT IS THE MOST IMPORTANT INFORMATION I SHOULD KNOW ABOUT ALPRAZOLAM TABLETS?"

Seizures. Stopping alprazolam tablets can cause seizures and seizures that will not stop (status epilepticus).

Mania. Alprazolam tablets may cause an increase in activity and talking (hypomania and mania) in people who have depression.

Alprazolam tablets can make you sleepy or dizzy and can slow your thinking and motor skills. Do not drive, operate heavy machinery, or do other dangerous activities until you know how alprazolam tablets affect you.

Do not drink alcohol or take other drugs that may make you sleepy or dizzy while taking alprazolam tablets without first talking to your healthcare provider. When taken with alcohol or drugs that cause sleepiness or dizziness, alprazolam tablets may make your sleepiness or dizziness much worse.

The most common side effects of alprazolam tablets include:

- problems with coordination
- hypotension
- trouble saying words clearly (dysarthria)
- changes in sex drive (libido)

These are not all the possible side effects of alprazolam tablets. Call your doctor for medical advice about side effects. You may report side effects to FDA at 1-800-FDA-1088.

How should I store alprazolam tablets?

Store alprazolam tablets at room temperature between 68°F to 77°F (20°C to 25°C) Keep alprazolam tablets and all medicines out of the reach of children.

General information about the safe and effective use of alprazolam tablets.

Medicines are sometimes prescribed for purposes other than those listed in a Medication Guide.

Do not use alprazolam tablets for a condition for which it was not prescribed.

Do not give alprazolam tablets to other people, even if they have the same symptoms that you have. It may harm them.

You can ask your pharmacist or healthcare provider for information about alprazolam tablets that is written for health professionals.

What are the ingredients in alprazolam tablets?

Active ingredient: alprazolam

Inactive ingredients: Lactose monohydrate, microcrystalline cellulose, sodium starch glycolate, hydroxyl propyl cellulose, sodium lauryl sulfate and magnesium stearate. In addition, the 0.5 mg tablet contains FD&C Yellow 6 lake and the 1 mg and 2 mg tablets contain FD&C Blue 2 lake.

For more information, go to [www.bpirx.com](http://www.bpirx.com) or call Breckenridge Pharmaceutical, Inc. 1-800-367-3395.

This Medication Guide has been approved by the U.S. Food and Drug Administration.

Manufactured By:

Centaur Pharmaceuticals Pvt. Ltd.

Pune - 411057, INDIA.

Distributed by:

Breckenridge Pharmaceutical, Inc.

Berlin, CT 06037

Revised: 04/2021

**Prinicpal Display Panel**



Packed By:

NASHVILLE, TN  
37217-2952

ALPRAZOLAM 0.5MG TAB #60

Compars to XANAX

NDC: 80425-0161-02

Source NDC: 51991-0705-01

Lot: 60AL05922 Exp.: 9/30/2022

BRECKENRIDGE

S/N: 00000056245 Store at room temp 20° - 25°C (68° - 77°F)



60AL05922

Caution: Federal law PROHIBITS transfer of this drug to any person other than the patient for whom it was prescribed.

## ALPRAZOLAM

alprazolam tablet

### Product Information

|                                |                               |                           |                                   |
|--------------------------------|-------------------------------|---------------------------|-----------------------------------|
| <b>Product Type</b>            | HUMAN<br>PRESCRIPTION<br>DRUG | <b>Item Code (Source)</b> | NDC:80425-<br>0161(NDC:51991-705) |
| <b>Route of Administration</b> | ORAL                          | <b>DEA Schedule</b>       | CIV                               |

### Active Ingredient/Active Moiety

| Ingredient Name  | Basis of Strength | Strength |
|--|-------------------|----------|
| ALPRAZOLAM (UNII: YU55MQ3IZY) (ALPRAZOLAM - UNII:YU55MQ3IZY) | ALPRAZOLAM        | 0.5 mg   |

### Product Characteristics

|                 |        |                     |          |
|-----------------|--------|---------------------|----------|
| <b>Color</b>    | orange | <b>Score</b>        | 2 pieces |
| <b>Shape</b>    | OVAL   | <b>Size</b>         | 9mm      |
| <b>Flavor</b>   |        | <b>Imprint Code</b> | B705     |
| <b>Contains</b> |        |                     |          |

### Packaging

| # | Item Code            | Package Description                               | Marketing Start Date | Marketing End Date |
|---|----------------------|---|----------------------|--------------------|
| 1 | NDC:80425-<br>0161-2 | 60 in 1 BOTTLE; Type 0: Not a Combination Product | 07/09/2018           |                    |

### Marketing Information

| Marketing Category | Application Number or Monograph Citation | Marketing Start Date | Marketing End Date |
|--------------------|--|----------------------|--------------------|
| ANDA               | ANDA207507                               | 07/09/2018           |                    |

**Labeler** - Advanced Rx Pharmacy of Tennessee, LLC (117023142)

# Establishment

| Name                                   | Address | ID/FEI    | Business Operations |
|--|---------|-----------|---------------------|
| Advanced Rx Pharmacy of Tennessee, LLC |         | 117023142 | repack(80425-0161)  |

Revised: 12/2021

Advanced Rx Pharmacy of Tennessee, LLC