

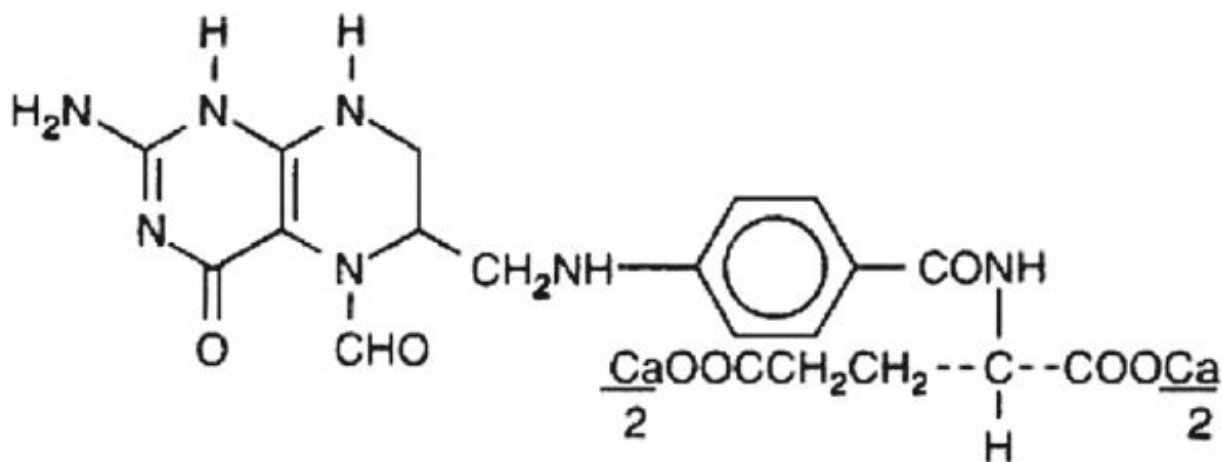
LEUCOVORIN CALCIUM- leucovorin calcium tablet Leading Pharma, LLC

**Leucovorin Calcium Tablets USP 5 mg, 10 mg, 15 mg and 25 mg
Rx only**

DESCRIPTION

Leucovorin Calcium Tablets contain either 5 mg, 10 mg, 15 mg or 25 mg leucovorin as the calcium salt of *N*-[4-[[[(2-amino-5-formyl-1,4,5,6,7,8-hexahydro-4-oxo-6-pteridiny]methyl]amino]benzoyl]-*L*- glutamic acid and the inactive ingredients Colloidal Silicon Dioxide, Croscarmellose Sodium, Magnesium Stearate, Microcrystalline Cellulose and Pregelatinized Starch. This is equivalent to 5.4 mg, 10.8 mg, 16.21 mg or 27.01 mg of anhydrous leucovorin calcium.

Leucovorin is a water soluble form of reduced folate in the folate group; it is useful as an antidote to drugs which act as folic acid antagonists. These tablets are intended for oral administration only. The structural formula of leucovorin calcium is:



CLINICAL PHARMACOLOGY

Leucovorin is a racemic mixture of the diastereoisomers of the 5-formyl derivative of tetrahydrofolic acid. The biologically active compound of the mixture is the (-)-*L*-isomer, known as *Citrovorum factor*, or (-)-folinic acid. Leucovorin does *not* require reduction by the enzyme dihydrofolate reductase in order to participate in reactions utilizing folates as a source of "one-carbon" moieties. Following oral administration, leucovorin is rapidly absorbed and enters the general body pool of reduced folates. The increase in plasma and serum folate activity (determined microbiologically with *Lactobacillus casei*) seen after oral administration of leucovorin is predominantly due to 5-methyltetrahydrofolate.

Twenty normal men were given a single, oral 15-mg dose (7.5 mg/m²) of leucovorin calcium and serum folate concentrations were assayed with *L. casei*. Mean values observed (\pm one standard error) were:

a) Time to peak serum folate concentration: 1.72 ± 0.08 hours,

b) Peak serum folate concentration achieved: 268 ± 18 ng/mL,

c) Serum folate half-disappearance time: 3.5 hours.

Oral tablets yielded areas under the serum folate concentration-time curves (AUCs) that were 12% greater than equal amounts of leucovorin given intramuscularly and equal to the same amounts given intravenously.

Oral absorption of leucovorin is saturable at doses above 25 mg. The apparent bioavailability of leucovorin was 97% for 25 mg, 75% for 50 mg and 37% for 100 mg.

INDICATIONS AND USAGE

Leucovorin Calcium Tablets are indicated to diminish the toxicity and counteract the effects of impaired methotrexate elimination and of inadvertent overdosages of folic acid antagonists.

CONTRAINDICATIONS

Leucovorin is improper therapy for pernicious anemia and other megaloblastic anemias secondary to the lack of vitamin B₁₂. A hematologic remission may occur while neurologic manifestations continue to progress.

WARNINGS

In the treatment of accidental overdose of folic acid antagonists, leucovorin should be administered as promptly as possible. As the time interval between antifolate administration (e.g., methotrexate [MTX]) and leucovorin rescue increases, leucovorin's effectiveness in counteracting hematologic toxicity decreases.

Monitoring of the serum MTX concentration is essential in determining the optimal dose and duration of treatment with leucovorin.

Delayed MTX excretion may be caused by a third space fluid accumulation (i.e., ascites, pleural effusion), renal insufficiency, or inadequate hydration. Under such circumstances, higher doses of leucovorin or prolonged administration may be indicated. Doses higher than those recommended for oral use must be given intravenously.

Leucovorin may enhance the toxicity of fluorouracil. Deaths from severe enterocolitis, diarrhea, and dehydration have been reported in elderly patients receiving weekly leucovorin and fluorouracil.¹ Concomitant granulocytopenia and fever were present in some but not all of the patients.

The concomitant use of leucovorin with trimethoprim-sulfamethoxazole for the acute treatment of *Pneumocystis carinii* pneumonia in patients with HIV infection was associated with increased rates of treatment failure and mortality in a placebo-controlled study.

PRECAUTIONS

General

Parenteral administration is preferable to oral dosing if there is a possibility that the patient may vomit or not absorb the leucovorin. Leucovorin has no effect on other established toxicities of MTX, such as the nephrotoxicity resulting from drug and/or metabolite precipitation in the kidney.

Drug Interactions

Folic acid in large amounts may counteract the antiepileptic effect of phenobarbital, phenytoin, and primidone, and increase the frequency of seizures in susceptible pediatric patients.

Preliminary animal and human studies have shown that small quantities of systemically administered leucovorin enter the CSF primarily as 5-methyltetrahydrofolate and, in humans, remain one to three orders of magnitude lower than the usual MTX concentrations following intrathecal administration.

However, high doses of leucovorin may reduce the efficacy of intrathecally administered MTX.

Leucovorin may enhance the toxicity of fluorouracil (see WARNINGS).

Pregnancy

Teratogenic Effects

Pregnancy

Animal reproduction studies have not been conducted with leucovorin. It is also not known whether leucovorin can cause fetal harm when administered to a pregnant woman or can affect reproduction capacity. Leucovorin should be given to a pregnant woman only if clearly needed.

Nursing Mothers

It is not known whether this drug is excreted in human milk. Because many drugs are excreted in human milk, caution should be exercised when leucovorin is administered to a nursing mother.

Pediatric Use

See Drug Interactions subsection.

ADVERSE REACTIONS

CALL YOUR DOCTOR FOR MEDICAL ADVICE ABOUT SIDE EFFECTS. YOU MAY REPORT SIDE EFFECTS TO THE FDA AT 1-800-FDA-1088 OR LEADING PHARMA, LLC AT 1-844-740-7500.

Allergic sensitization has been reported following both oral and parenteral administration of folic acid.

OVERDOSAGE

Excessive amounts of leucovorin may nullify the chemotherapeutic effect of folic acid antagonists.

DOSAGE AND ADMINISTRATION

Leucovorin calcium tablets are intended for oral administration. Because absorption is saturable, oral administration of doses greater than 25 mg is not recommended.

Impaired Methotrexate Elimination or Inadvertent Overdosage

Leucovorin rescue should begin as soon as possible after an inadvertent overdosage and within 24 hours of methotrexate administration when there is delayed excretion (see WARNINGS). Leucovorin 15 mg (10 mg/m^2) should be administered I.M., I.V., or P.O. every 6 hours until the serum methotrexate level is less than 10^{-8}M . In the presence of gastrointestinal toxicity, nausea, or vomiting, leucovorin should be administered parenterally.

Serum creatinine and methotrexate levels should be determined at 24-hour intervals. If the 24-hour serum creatinine has increased 50% over baseline or if the 24-hour methotrexate level is greater than $5 \times 10^{-6}\text{M}$ or the 48-hour level is greater than $9 \times 10^{-7}\text{M}$, the dose of leucovorin should be increased to 150 mg (100 mg/m^2) I.V. every 3 hours until the methotrexate level is less than 10^{-8}M . Doses greater than 25 mg should be given parenterally (see CLINICAL PHARMACOLOGY).

Hydration (3 L/d) and urinary alkalinization with sodium bicarbonate should be employed concomitantly. The bicarbonate dose should be adjusted to maintain the urine pH at 7.0 or greater.

The recommended dose of leucovorin to counteract hematologic toxicity from folic acid antagonists with less affinity for mammalian dihydrofolate reductase than methotrexate (i.e., trimethoprim, pyrimethamine) is substantially less, and 5 to 15 mg of leucovorin per day has been recommended by some investigators.

Patients who experience delayed early methotrexate elimination are likely to develop reversible non-oliguric renal failure. In addition to appropriate leucovorin therapy, these patients require continuing hydration and urinary alkalinization, and close monitoring of fluid and electrolyte status, until the serum methotrexate level has fallen below 0.05 micromolar and the renal failure has resolved.

Some patients will have abnormalities in methotrexate elimination or renal function following methotrexate administration, which are significant but less severe. These abnormalities may or may not be associated with significant clinical toxicity. If significant clinical toxicity is observed, leucovorin rescue should be extended for an additional 24 hours (total 14 doses over 84 hours) in subsequent courses of therapy. The possibility that the patient is taking other medications which interact with methotrexate (e.g., medications which may interfere with methotrexate elimination or binding to serum albumin) should always be reconsidered when laboratory abnormalities or clinical toxicities are observed.

HOW SUPPLIED

Leucovorin Calcium Tablets USP

5 mg tablets are supplied as a white to off-white to pale yellow, round tablet; scored on one side and "LP" over "184" debossed on the other side; bottles of 30 (NDC 69315-184-03) and 100 (NDC 69315-184-01).

10 mg tablets are supplied as a white to off-white to pale yellow, round tablet; scored on one side and "LP" over "185" debossed on the other side; bottles of 12 (NDC 69315-185-12) and 24 (NDC 69315-185-24).

15 mg tablets are supplied as a white to off-white to pale yellow, round tablet; scored on one side and "LP" over "186" debossed on the other side; bottles of 24 (NDC 69315-186-24).

25 mg tablets are supplied as a white to off-white to pale yellow, round tablet; scored on one side and "LP" over "187" debossed on the other side; bottles of 25 (NDC 69315-187-25).

Store at 15° to 25°C (59° to 77°F). Protect from light and moisture.

REFERENCES

1. Grem JL, Shoemaker DD, Petrelli NJ, Douglas HO Jr. Severe and fatal toxic effects observed in treatment with high- and low-dose leucovorin plus 5-fluorouracil for colorectal carcinoma. *Cancer Treat Rep.*1987;71:1122.
2. Link MP, Goorin AM, Miser AW et al. The effect of adjuvant chemotherapy on relapse-free survival in patients with osteosarcoma of the extremity. *N Engl J Med.*1986;314:1600-1606.

Rx only

Manufactured and Distributed by:

Leading Pharma, LLC

Fairfield, NJ 07004, USA

Rev.02 11/21

PACKAGE LABEL.PRINCIPAL DISPLAY PANEL

NDC 69315-184-03

**Leucovorin
Calcium
Tablets USP**

5 mg*

*Each tablet contains leucovorin calcium USP equivalent to 5 mg leucovorin.

Rx only

LEADING
PHARMA

30 Tablets

USUAL DOSAGE:
See Package insert for Complete Prescribing Information.

Dispense in a tight, light-resistant, child-resistant container as defined in the USP/NF.

Keep this and all Medications out of the reach of children.

**Store at 15° to 25°C (59° to 77°F).
Protect From Light and Moisture.**

Manufactured and Distributed by:
Leading Pharma, LLC
Fairfield, NJ 07004

Tablet Imprinted: LP 184 Rev. 02

3 69315-184-03 5

.6" Unvarnished Area

NDC 69315-184-01

Leucovorin Calcium Tablets USP

5 mg*



*Each tablet contains leucovorin calcium USP equivalent to 5 mg leucovorin.

Rx only

LEADING
PHARMA

100 Tablets

USUAL DOSAGE:

See Package insert for Complete Prescribing Information.

Dispense in a tight, light-resistant, child-resistant container as defined in the USP/NF.

Keep this and all Medications out of the reach of children.

Store at 15° to 25°C (59° to 77°F).

Protect From Light and Moisture.

Manufactured and Distributed by:
Leading Pharma, LLC
Fairfield, NJ 07004

Tablet Imprinted: LP 184 Rev. 02



N 3 6 9 3 1 5 - 1 8 4 - 0 1 1

.6" Unvamed Area

NDC 69315-185-12

Leucovorin Calcium Tablets USP

10 mg*



*Each tablet contains leucovorin calcium USP equivalent to 10 mg leucovorin.

Rx only

LEADING
PHARMA

12 Tablets

USUAL DOSAGE:

See Package insert for Complete Prescribing Information.

Dispense in a tight, light-resistant, child-resistant container as defined in the USP/NF.

Keep this and all Medications out of the reach of children.

Store at 15° to 25°C (59° to 77°F).

Protect From Light and Moisture.

Manufactured and Distributed by:
Leading Pharma, LLC
Fairfield, NJ 07004

Tablet Imprinted: LP 185 Rev. 02



N 3 6 9 3 1 5 - 1 8 5 - 1 2 4

.6" Unvamed Area

NDC 69315-185-24

Leucovorin Calcium Tablets USP

10 mg*



*Each tablet contains leucovorin calcium USP equivalent to 10 mg leucovorin.

Rx only

LEADING
PHARMA

24 Tablets

USUAL DOSAGE:

See Package insert for Complete Prescribing Information.

Dispense in a tight, light-resistant, child-resistant container as defined in the USP/NF.

Keep this and all Medications out of the reach of children.

Store at 15° to 25°C (59° to 77°F).

Protect From Light and Moisture.

Manufactured and Distributed by:
Leading Pharma, LLC
Fairfield, NJ 07004

Tablet Imprinted: LP 185 Rev. 02



N 3 6 9 3 1 5 - 1 8 5 - 2 4 7

.6" Unvamed Area

NDC 69315-186-24

Leucovorin Calcium Tablets USP

15 mg*



*Each tablet contains leucovorin calcium USP equivalent to 15 mg leucovorin.

Rx only

LEADING
PHARMA

24 Tablets

USUAL DOSAGE:

See Package insert for Complete Prescribing Information.

Dispense in a tight, light-resistant, child-resistant container as defined in the USP/NF.

Keep this and all Medications out of the reach of children.

Store at 15° to 25°C (59° to 77°F).

Protect From Light and Moisture.

Manufactured and Distributed by:
Leading Pharma, LLC
Fairfield, NJ 07004

Tablet Imprinted: LP 186 Rev. 02



N 3 6 9 3 1 5 - 1 8 6 - 2 4 4

.6" Unvarnished Area

NDC 69315-187-25

Leucovorin Calcium Tablets USP

25 mg*



*Each tablet contains leucovorin calcium USP equivalent to 25 mg leucovorin.

Rx only

LEADING
PHARMA

25 Tablets

USUAL DOSAGE:

See Package insert for Complete Prescribing Information.

Dispense in a tight, light-resistant, child-resistant container as defined in the USP/NF.

Keep this and all Medications out of the reach of children.

Store at 15° to 25°C (59° to 77°F).

Protect From Light and Moisture.

Manufactured and Distributed by:
Leading Pharma, LLC
Fairfield, NJ 07004

Tablet Imprinted: LP 187 Rev. 02



N 3 6 9 3 1 5 - 1 8 7 - 2 5 8

.6" Unvarnished Area

LEUCOVORIN CALCIUM

leucovorin calcium tablet

Product Information

Product Type	HUMAN PRESCRIPTION DRUG	Item Code (Source)	NDC:69315-184
Route of Administration	ORAL		

Active Ingredient/Active Moiety

Ingredient Name	Basis of Strength	Strength
LEUCOVORIN CALCIUM (UNII: RPR1R4C0P4) (LEUCOVORIN - UNII:Q573I9DVLP)	LEUCOVORIN	5 mg

Inactive Ingredients

Ingredient Name	Strength
SILICON DIOXIDE (UNII: ETJ7Z6XBU4)	
CROSCARMELLOSE SODIUM (UNII: M28OL1HH48)	
MAGNESIUM STEARATE (UNII: 70097M6I30)	
STARCH, CORN (UNII: O8232NY3SJ)	
MICROCRYSTALLINE CELLULOSE (UNII: OP1R32D61U)	

Product Characteristics

Color	white (White to off-white to pale yellow)	Score	2 pieces
Shape	ROUND	Size	7mm
Flavor		Imprint Code	LP;184
Contains			

Packaging

#	Item Code	Package Description	Marketing Start Date	Marketing End Date
1	NDC:69315-184-03	30 in 1 BOTTLE; Type 0: Not a Combination Product	11/16/2020	
2	NDC:69315-184-01	100 in 1 BOTTLE; Type 0: Not a Combination Product	11/16/2020	

Marketing Information

Marketing Category	Application Number or Monograph Citation	Marketing Start Date	Marketing End Date
ANDA	ANDA213929	11/16/2020	

LEUCOVORIN CALCIUM

leucovorin calcium tablet

Product Information

Product Type	HUMAN PRESCRIPTION DRUG	Item Code (Source)	NDC:69315-185
Route of Administration	ORAL		

Active Ingredient/Active Moiety

Ingredient Name	Basis of Strength	Strength
LEUCOVORIN CALCIUM (UNII: RPR1R4C0P4) (LEUCOVORIN - UNII:Q573I9DVLP)	LEUCOVORIN	10 mg

Inactive Ingredients

Ingredient Name	Strength
SILICON DIOXIDE (UNII: ETJ7Z6XBU4)	
CROSCARMELOSE SODIUM (UNII: M28OL1HH48)	
MAGNESIUM STEARATE (UNII: 70097M6I30)	
STARCH, CORN (UNII: O8232NY3SJ)	
MICROCRYSTALLINE CELLULOSE (UNII: OP1R32D61U)	

Product Characteristics

Color	white (White to off-white to pale yellow)	Score	2 pieces
Shape	ROUND	Size	9mm
Flavor		Imprint Code	LP;185
Contains			

Packaging

#	Item Code	Package Description	Marketing Start Date	Marketing End Date
1	NDC:69315-185-12	12 in 1 BOTTLE; Type 0: Not a Combination Product	11/16/2020	
2	NDC:69315-185-24	24 in 1 BOTTLE; Type 0: Not a Combination Product	11/16/2020	

Marketing Information

Marketing Category	Application Number or Monograph Citation	Marketing Start Date	Marketing End Date
ANDA	ANDA213929	11/16/2020	

LEUCOVORIN CALCIUM

leucovorin calcium tablet

Product Information

Product Type	HUMAN PRESCRIPTION DRUG	Item Code (Source)	NDC:69315-186
Route of Administration	ORAL		

Active Ingredient/Active Moiety

Ingredient Name	Basis of Strength	Strength
LEUCOVORIN CALCIUM (UNII: RPR1R4C0P4) (LEUCOVORIN - UNII:Q573I9DVLP)	LEUCOVORIN	15 mg

Inactive Ingredients

Ingredient Name	Strength
SILICON DIOXIDE (UNII: ETJ7Z6XBU4)	
CROSCARMELOSE SODIUM (UNII: M28OL1HH48)	
MAGNESIUM STEARATE (UNII: 70097M6I30)	
STARCH, CORN (UNII: O8232NY3SJ)	
MICROCRYSTALLINE CELLULOSE (UNII: OP1R32D61U)	

Product Characteristics

Color	white (White to off-white to pale yellow)	Score	2 pieces
Shape	ROUND	Size	7mm
Flavor		Imprint Code	LP;186

Contains**Packaging**

#	Item Code	Package Description	Marketing Start Date	Marketing End Date
1	NDC:69315-186-24	24 in 1 BOTTLE; Type 0: Not a Combination Product	11/16/2020	

Marketing Information

Marketing Category	Application Number or Monograph Citation	Marketing Start Date	Marketing End Date
ANDA	ANDA213929	11/16/2020	

LEUCOVORIN CALCIUM

leucovorin calcium tablet

Product Information

Product Type	HUMAN PRESCRIPTION DRUG	Item Code (Source)	NDC:69315-187
Route of Administration	ORAL		

Active Ingredient/Active Moiety

Ingredient Name	Basis of Strength	Strength
LEUCOVORIN CALCIUM (UNII: RPR1R4C0P4) (LEUCOVORIN - UNII:Q573I9DVLP)	LEUCOVORIN	25 mg

Inactive Ingredients

Ingredient Name	Strength
SILICON DIOXIDE (UNII: ETJ7Z6XBU4)	
CROSCARMELLOSE SODIUM (UNII: M28OL1HH48)	
MAGNESIUM STEARATE (UNII: 70097M6I30)	
STARCH, CORN (UNII: O8232NY3SJ)	
MICROCRYSTALLINE CELLULOSE (UNII: OP1R32D61U)	

Product Characteristics

Color	white (White to off-white to pale yellow)	Score	2 pieces
Shape	ROUND	Size	9mm
Flavor		Imprint Code	LP;187
Contains			

Packaging

		Marketing Start	Marketing End
--	--	-----------------	---------------

#	Item Code	Package Description	Marketing Start Date	Marketing End Date
1	NDC:69315-187-25	25 in 1 BOTTLE; Type 0: Not a Combination Product	11/16/2020	

Marketing Information			
Marketing Category	Application Number or Monograph Citation	Marketing Start Date	Marketing End Date
ANDA	ANDA213929	11/16/2020	

Labeler - Leading Pharma, LLC (079575060)

Establishment

Name	Address	ID/FEI	Business Operations
Leading Pharma, LLC		079575060	MANUFACTURE(69315-184, 69315-166, 69315-165, 69315-185, 69315-166, 69315-165, 69315-186, 69315-166, 69315-165, 69315-187, 69315-166, 69315-165)

Revised: 11/2021

Leading Pharma, LLC