

ANASTROZOLE - anastrozole tablet
Ascend Laboratories, LLC

HIGHLIGHTS OF PRESCRIBING INFORMATION

HIGHLIGHTS OF PRESCRIBING INFORMATION These highlights do not include all the information needed to use anastrozole tablets safely and effectively. See full prescribing information for anastrozole tablets.

Initial U.S. Approval

----- **RECENT MAJOR CHANGES** -----

Contraindications – Premenopausal Women and Pregnancy (4.1, 8.1) 01/2010

Warnings and Precautions- Ischemic Cardiovascular Events (5.1, 6.1) 01/2010

----- **INDICATIONS AND USAGE** -----

Anastrozole tablets are an aromatase inhibitor indicated for:

- Adjuvant treatment of postmenopausal women with hormone receptor-positive early breast cancer (1.1)
- First-line treatment of postmenopausal women with hormone receptor-positive or hormone receptor unknown locally advanced or metastatic breast cancer (1.2)
- Treatment of advanced breast cancer in postmenopausal women with disease progression following tamoxifen therapy. Patients with ER-negative disease and patients who did not respond to previous tamoxifen therapy rarely responded to anastrozole tablets (1.3)

----- **DOSAGE AND ADMINISTRATION** -----

One 1 mg tablet taken once daily (2.1)

----- **DOSAGE FORMS AND STRENGTHS** -----

1 mg tablets (3)

----- **CONTRAINDICATIONS** -----

- Women of premenopausal endocrine status, including pregnant women (4.1, 8.1)
- Patients with demonstrated hypersensitivity to anastrozole tablets or any excipient (4.2)

----- **WARNINGS AND PRECAUTIONS** -----

- In women with pre-existing ischemic heart disease, an increased incidence of ischemic cardiovascular events occurred with anastrozole tablets use compared to tamoxifen use. Consider risks and benefits. (5.1, 6.1)
- Decreases in bone mineral density may occur. Consider bone mineral density monitoring. (5.2, 6.1)
- Increases in total cholesterol may occur. Consider cholesterol monitoring. (5.3, 6.1)

----- **ADVERSE REACTIONS** -----

To report SUSPECTED ADVERSE REACTIONS, contact FDA at 1-800-FDA-1088 or www.fda.gov/medwatch.

In the early breast cancer (ATAC) study, the most common (occurring with an incidence of >10%) side effects occurring in women taking anastrozole tablets included: hot flashes, asthenia, arthritis, pain, arthralgia, pharyngitis, hypertension, depression, nausea and vomiting, rash, osteoporosis, fractures, back pain, insomnia, headache, peripheral edema and lymphedema, regardless of causality. (6.1)

In the advanced breast cancer studies, the most common (occurring with an incidence of >10%) side effects occurring in women taking anastrozole tablets included: hot flashes, nausea, asthenia, pain, headache, back pain, bone pain, increased cough, dyspnea, pharyngitis and peripheral edema. (6.1)

----- **DRUG INTERACTIONS** -----

- Tamoxifen: Do not use in combination with anastrozole tablets. No additional benefit seen over tamoxifen monotherapy (7.1, 14.1).
- Estrogen-containing products: Combination use may diminish activity of anastrozole tablets (7.2).

----- **USE IN SPECIFIC POPULATIONS** -----

- Pediatric patients: Efficacy has not been demonstrated for pubertal boys of adolescent age with gynecomastia or girls with McCune-Albright Syndrome and progressive precocious puberty. (8.4)

See 17 for PATIENT COUNSELING INFORMATION and FDA approved Patient Labeling.

See 17 for PATIENT COUNSELING INFORMATION.

Revised: 6/2010

FULL PRESCRIBING INFORMATION: CONTENTS*

* Sections or subsections omitted from the full prescribing information are not listed.

FULL PRESCRIBING INFORMATION

FULL PRESCRIBING INFORMATION: CONTENTS*

1 INDICATIONS AND USAGE

- 1.1 Adjuvant Treatment
- 1.2 First-Line Treatment
- 1.3 Second-Line Treatment

2 DOSAGE AND ADMINISTRATION

- 2.1 Recommended Dose
- 2.2 Patients with Hepatic Impairment

3 DOSAGE FORMS AND STRENGTHS

4 CONTRAINDICATIONS

- 4.1 Pregnancy and Premenopausal Women
- 4.2 Hypersensitivity

5 WARNINGS AND PRECAUTIONS

- 5.1 Ischemic Cardiovascular Events
- 5.2 Bone Effects
- 5.3 Cholesterol

6 ADVERSE REACTIONS

- 6.1 Clinical Trials Experience
 - Adjuvant Therapy
 - First-Line Therapy
 - Second-Line Therapy
- 6.2 Post-Marketing Experience

7 DRUG INTERACTIONS

- 7.1 Tamoxifen
- 7.2 Estrogen
- 7.3 Warfarin
- 7.4 Cytochrome P450

8 USE IN SPECIFIC POPULATIONS

- 8.1 Pregnancy
- 8.3 Nursing mothers
- 8.4 Pediatric Use
- 8.5 Geriatric Use
- 8.6 Renal Impairment
- 8.7 Hepatic Impairment

10 OVERDOSAGE

11 DESCRIPTION

12 CLINICAL PHARMACOLOGY

- 12.1 Mechanism of Action
- 12.2 Pharmacodynamics
- 12.3 Pharmacokinetics

13 NONCLINICAL TOXICOLOGY

- 13.1 Carcinogenesis, Mutagenesis, Impairment of Fertility

13.2 Animal Pharmacology and/or Toxicology

14 CLINICAL STUDIES

14.1 Adjuvant Treatment of Breast Cancer in Postmenopausal Women

14.2 First-Line Therapy in Postmenopausal Women with Advanced Breast Cancer

14.3 Second-Line Therapy in Postmenopausal Women with Advanced Breast Cancer who had Disease Progression following Tamoxifen Therapy

16 HOW SUPPLIED/STORAGE AND HANDLING

Storage:

17 PATIENT COUNSELING INFORMATION

17.1 Pregnancy

17.2 Allergic (Hypersensitivity) Reactions

17.3 Ischemic Cardiovascular Events

17.4 Bone Effects

17.5 Cholesterol

17.6 Tamoxifen

17.7 FDA-Approved Patient Labeling

* Sections or subsections omitted from the full prescribing information are not listed

FULL PRESCRIBING INFORMATION

1. INDICATIONS AND USAGE

1.1. Adjuvant Treatment

Anastrozole tablets are indicated for adjuvant treatment of postmenopausal women with hormone receptor-positive early breast cancer.

1.2. First-Line Treatment

Anastrozole tablets are indicated for the first-line treatment of postmenopausal women with hormone receptor-positive or hormone receptor unknown locally advanced or metastatic breast cancer.

1.3. Second-Line Treatment

Anastrozole tablets are indicated for the treatment of advanced breast cancer in postmenopausal women with disease progression following tamoxifen therapy. Patients with ER-negative disease and patients who did not respond to previous tamoxifen therapy rarely responded to anastrozole tablets.

2. DOSAGE AND ADMINISTRATION

2.1. Recommended Dose

The dose of anastrozole tablets are one 1 mg tablet taken once a day. For patients with advanced breast cancer, anastrozole tablets should be continued until tumor progression. Anastrozole tablets can be taken with or without food.

For adjuvant treatment of early breast cancer in postmenopausal women, the optimal duration of therapy is unknown. In the ATAC trial anastrozole tablets were administered for five years. *[see Clinical Studies (14.1)]*

No dosage adjustment is necessary for patients with renal impairment or for elderly patients. *[see Use in Specific Populations (8.6)]*

2.2. Patients with Hepatic Impairment

No changes in dose are recommended for patients with mild-to-moderate hepatic impairment. Anastrozole tablets have not been studied in patients with severe hepatic impairment. *[see Use in Specific Populations (8.7)]*

3 DOSAGE FORMS AND STRENGTHS

The tablets are white, biconvex, film-coated containing 1 mg of anastrozole. The tablets are debossed with “AN” and “1” on one side and plain surface on the other side.

4 CONTRAINDICATIONS

4.1. Pregnancy and Premenopausal Women

Anastrozole tablets may cause fetal harm when administered to a pregnant woman and offers no clinical benefit to premenopausal women with breast cancer. Anastrozole tablets are contraindicated in women who are or may become pregnant. There are no adequate and well controlled studies in pregnant women using anastrozole tablets. If anastrozole tablets are used during pregnancy, or if the patient becomes pregnant while taking this drug, the patient should be apprised of the potential hazard to a fetus or potential risk for loss of the pregnancy. *[see Use in Specific Populations (8.1)]*

4.2. Hypersensitivity

Anastrozole tablets are contraindicated in any patient who has shown a hypersensitivity reaction to the drug or to any of the excipients. Observed reactions include anaphylaxis, angioedema, and urticaria. *[see Adverse Reactions (6.2)]*

5 WARNINGS AND PRECAUTIONS

5.1. Ischemic Cardiovascular Events

In women with pre-existing ischemic heart disease, an increased incidence of ischemic cardiovascular events was observed with anastrozole tablets in the ATAC trial (17% of patients on anastrozole tablets and 10% of patients on tamoxifen). Consider risk and benefits of anastrozole tablets therapy in patients with pre-existing ischemic heart disease. *[see Adverse Reactions (6.1)]*

5.2. Bone Effects

Results from the ATAC trial bone substudy at 12 and 24 months demonstrated that patients receiving anastrozole tablets had a mean decrease in both lumbar spine and total hip bone mineral density (BMD) compared to baseline. Patients receiving tamoxifen had a mean increase in both lumbar spine and total hip BMD compared to baseline *[see Adverse Reactions, (6.1)]*.

5.3. Cholesterol

During the ATAC trial, more patients receiving anastrozole tablets were reported to have elevated serum cholesterol compared to patients receiving tamoxifen (9% versus 3.5%, respectively) *[see Adverse Reactions, (6.1)]*.

6 ADVERSE REACTIONS

Serious adverse reactions with anastrozole tablets occurring in less than 1 in 10,000 patients, are: 1) skin reactions such as lesions, ulcers, or blisters; 2) allergic reactions with swelling of the face, lips, tongue, and/or throat. This may cause difficulty in swallowing and/or breathing; and 3) changes in blood tests of the liver function, including inflammation of the liver with symptoms that may include a general feeling of not being well, with or without jaundice, liver pain or liver swelling *[see Adverse Reactions, (6.2)]*.

Common adverse reactions (occurring with an incidence of >10%) in women taking anastrozole tablets included: hot flashes, asthenia, arthritis, pain, arthralgia, pharyngitis, hypertension, depression, nausea and vomiting, rash, osteoporosis, fractures, back pain, insomnia, pain, headache, bone pain, peripheral edema, increased cough, dyspnea, pharyngitis and lymphedema.

In the ATAC trial, the most common reported adverse reaction (>0.1%) leading to discontinuation of therapy for both treatment groups was hot flashes, although there were fewer patients who discontinued therapy as a result of hot flashes in the anastrozole tablets group.

Because clinical trials are conducted under widely varying conditions, adverse reaction rates observed in the clinical trials of a drug cannot be directly compared to rates in the clinical trials of another drug and may not reflect the rates observed in practice.

6.1 Clinical Trials Experience

Adjuvant Therapy

Adverse reaction data for adjuvant therapy are based on the ATAC trial [see *Clinical Studies (14.1)*]. The median duration of adjuvant treatment for safety evaluation was 59.8 months and 59.6 months for patients receiving anastrozole tablets 1 mg and tamoxifen 20 mg, respectively.

Adverse reactions occurring with an incidence of at least 5% in either treatment group during treatment or within 14 days of the end of treatment are presented in Table 1.

Table 1 – Adverse reactions occurring with an incidence of at least 5% in either treatment group during treatment, or within 14 days of the end of treatment in the ATAC trial*

Body system and adverse reactions by COSTART[†] preferred term[‡]	Anastrozole tablets 1mg (N[§] = 3092)	Tamoxifen 20mg (N[§] = 3094)
Body as a whole		
Asthenia	575 (19)	544 (18)
Pain	533 (17)	485 (16)
Back pain	321 (10)	309 (10)
Headache	314 (10)	249 (8)
Abdominal pain	271 (9)	276 (9)
Infection	285 (9)	276 (9)
Accidental injury	311 (10)	303 (10)
Flu syndrome	175 (6)	195 (6)
Chest pain	200 (7)	150 (5)
Neoplasm	162 (5)	144 (5)
Cyst	138 (5)	162 (5)
Cardiovascular		
Vasodilatation	1104 (36)	1264 (41)
Hypertension	402 (13)	349 (11)
Digestive		
Nausea	343 (11)	335 (11)
Constipation	249 (8)	252 (8)
Diarrhea	265 (9)	216 (7)
Dyspepsia	206 (7)	169 (6)
Gastrointestinal disorder	210 (7)	158 (5)
Hemic and lymphatic		
Lymphedema	304 (10)	341 (11)
Anemia	113 (4)	159 (5)
Metabolic and nutritional		
Peripheral edema	311 (10)	343 (11)
Weight gain	285 (9)	274 (9)
Hypercholesterolemia	278 (9)	108 (3.5)
Musculoskeletal		
Arthritis	512 (17)	445 (14)
Arthralgia	467 (15)	344 (11)
Osteoporosis	325 (11)	226 (7)
Fracture	315 (10)	209 (7)
Bone pain	201 (7)	185 (6)
Arthrosis	207 (7)	156 (5)
Joint Disorder	184 (6)	160 (5)

Myalgia	179 (6)	160 (5)
Nervous system		
Depression	413 (13)	382 (12)
Insomnia	309 (10)	281 (9)
Dizziness	236 (8)	234 (8)
Anxiety	195 (6)	180 (6)
Paresthesia	215 (7)	145 (5)
Respiratory		
Pharyngitis	443 (14)	422 (14)
Cough increased	261 (8)	287 (9)
Dyspnea	234 (8)	237 (8)
Sinusitis	184 (6)	159 (5)
Bronchitis	167 (5)	153 (5)
Skin and appendages		
Rash	333 (11)	387 (13)
Sweating	145 (5)	177 (6)
Special Senses		
Cataract Specified	182 (6)	213 (7)
Urogenital		
Leukorrhea	86 (3)	286 (9)
Urinary tract infection	244 (8)	313 (10)
Breast pain	251 (8)	169 (6)
Breast Neoplasm	164 (5)	139 (5)
Vulvovaginitis	194 (6)	150 (5)
Vaginal Hemorrhage¶	122 (4)	180 (6)
Vaginitis	125 (4)	158 (5)

* The combination arm was discontinued due to lack of efficacy benefit at 33 months of follow-up.

† COSTART Coding Symbols for Thesaurus of Adverse Reaction Terms.

‡ A patient may have had more than 1 adverse reaction, including more than 1 adverse reaction in the same body system.

§ N=Number of patients receiving the treatment.

¶ Vaginal Hemorrhage without further diagnosis.

Certain adverse reactions and combinations of adverse reactions were prospectively specified for analysis, based on the known pharmacologic properties and side effect profiles of the two drugs (see Table 2).

Table 2 – Number of Patients with Pre-specified Adverse Reactions in ATAC Trial*

	Anastrozole tablets N=3092 (%)	Tamoxifen N=3094(%)	Odds-ratio	95% CI
Hot Flashes	1104 (36)	1264(41)	0.80	0.73 - 0.89
Musculoskeletal Events [†]	1100 (36)	911 (29)	1.32	1.19 - 1.47
Fatigue/Asthenia	575 (19)	544 (18)	1.07	0.94 - 1.22
Mood Disturbances	597 (19)	554 (18)	1.10	0.97 - 1.25
Nausea and Vomiting	393 (13)	384 (12)	1.03	0.88 - 1.19
All Fractures	315 (10)	209 (7)	1.57	1.30 - 1.88
Fractures of Spine, Hip, or Wrist	133 (4)	91 (3)	1.48	1.13 - 1.95
Wrist/Colles' fractures	67 (2)	50 (2)		
Spine fractures	43 (1)	22 (1)		
Hip fractures	28 (1)	26 (1)		

Cataracts	182 (6)	213 (7)	0.85	0.69 - 1.04
Vaginal Bleeding	167 (5)	317 (10)	0.50	0.41 - 0.61
Ischemic Cardiovascular Disease	127 (4)	104 (3)	1.23	0.95 - 1.60
Vaginal Discharge	109 (4)	408 (13)	0.24	0.19 - 0.30
Venous Thromboembolic events	87 (3)	140 (5)	0.61	0.47 - 0.80
Deep Venous Thromboembolic Events	48 (2)	74 (2)	0.64	0.45 - 0.93
Ischemic Cerebrovascular Event	62 (2)	88 (3)	0.70	0.50 - 0.97
Endometrial Cancer [‡]	4 (0.2)	13 (0.6)	0.31	0.10 - 0.94

* Patients with multiple events in the same category are counted only once in that category.

† Refers to joint symptoms, including joint disorder, arthritis, arthrosis and arthralgia.

‡ Percentages calculated based upon the numbers of patients with an intact uterus at Baseline

Ischemic Cardiovascular Events

Between treatment arms in the overall population of 6186 patients, there was no statistical difference in ischemic cardiovascular events (4% anastrozole tablets vs. 3% tamoxifen). In the overall population, angina pectoris was reported in 71/3092 (2.3%) patients in the anastrozole tablets arm and 51/3094 (1.6%) patients in the tamoxifen arm; myocardial infarction was reported in 37/3092 (1.2%) patients in the anastrozole tablets arm and 34/3094 (1.1%) patients in the tamoxifen arm.

In women with pre-existing ischemic heart disease 465/6186 (7.5%), the incidence of ischemic cardiovascular events was 17% in patients on anastrozole tablets and 10% in patients on tamoxifen. In this patient population, angina pectoris was reported in 25/216 (11.6%) patients receiving anastrozole tablets and 13/249 (5.2%) patients receiving tamoxifen; myocardial infarction was reported in 2/216 (0.9%) patients receiving anastrozole tablets and 8/249 (3.2%) patients receiving tamoxifen.

Bone Mineral Density Findings

Results from the ATAC trial bone substudy at 12 and 24 months demonstrated that patients receiving anastrozole tablets had a mean decrease in both lumbar spine and total hip bone mineral density (BMD) compared to baseline. Patients receiving tamoxifen had a mean increase in both lumbar spine and total hip BMD compared to baseline.

Because anastrozole tablets lowers circulating estrogen levels it may cause a reduction in bone mineral density.

A post-marketing trial assessed the combined effects of anastrozole tablets and the bisphosphonate risedronate on changes from baseline in BMD and markers of bone resorption and formation in postmenopausal women with hormone receptor-positive early breast cancer. All patients received calcium and vitamin D supplementation. At 12 months, small reductions in lumbar spine bone mineral density were noted in patients not receiving bisphosphonates. Bisphosphonate treatment preserved bone density in most patients at risk of fracture.

Postmenopausal women with early breast cancer scheduled to be treated with anastrozole tablets should have their bone status managed according to treatment guidelines already available for postmenopausal women at similar risk of fragility fracture.

Cholesterol

During the ATAC trial, more patients receiving anastrozole tablets were reported to have an elevated serum cholesterol compared to patients receiving tamoxifen (9% versus 3.5%, respectively).

A post-marketing trial also evaluated any potential effects of anastrozole tablets on lipid profile. In the primary analysis population for lipids (anastrozole tablets alone), there was no clinically significant change in LDL-C from baseline to 12 months and HDL-C from baseline to 12 months

In secondary population for lipids (anastrozole tablets+risedronate), there also was no clinically significant change in LDL-C and HDL-C from baseline to 12 months.

In both populations for lipids, there was no clinically significant difference in total cholesterol (TC) or serum triglycerides (TG) at 12 months compared with baseline.

In this trial, treatment for 12 months with anastrozole tablets alone had a neutral effect on lipid profile.

Combination treatment with anastrozole tablets and risedronate also had a neutral effect on lipid profile.

The trial provides evidence that postmenopausal women with early breast cancer scheduled to be treated with anastrozole tablets should be managed using the current National Cholesterol Education Program guidelines for cardiovascular risk-based management of individual patients with LDL elevations.

Other Adverse Reactions

Patients receiving anastrozole tablets have an increase in joint disorders (including arthritis, arthrosis and arthralgia) compared with patients receiving tamoxifen. Patients receiving anastrozole tablets have an increase in the incidence of all fractures (specifically fractures of spine, hip and wrist) [315 (10%)] compared with patients receiving tamoxifen [209 (7%)].

Patients receiving anastrozole tablets have a higher incidence of carpal tunnel syndrome [78 (2.5%)] compared with patients receiving tamoxifen [22 (0.7%)].

Vaginal bleeding occurred more frequently in the tamoxifen-treated patients versus the anastrozole tablets-treated patients 317 (10%) versus 167 (5%), respectively.

Patients receiving anastrozole tablets have a lower incidence of hot flashes, vaginal bleeding, vaginal discharge, endometrial cancer, venous thromboembolic events and ischemic cerebrovascular events compared with patients receiving tamoxifen.

First-Line Therapy

Adverse reactions occurring with an incidence of at least 5% in either treatment group of trials 0030 and 0027 during or within 2 weeks of the end of treatment are shown in Table 3.

Table 3 – Adverse Reactions Occurring with an Incidence of at Least 5% in Trials 0030 and 0027

Body system Adverse Reaction*	Number (%) of subjects Anastrozole tablets (n=506)	Number (%) of subjects Tamoxifen (n=511)
Whole body		
Asthenia	83 (16)	81 (16)
Pain	70 (14)	73 (14)
Back pain	60 (12)	68 (13)
Headache	47 (9)	40 (8)
Abdominal pain	40 (8)	38 (7)
Chest pain	37 (7)	37 (7)
Flu syndrome	35 (7)	30 (6)
Pelvic pain	23 (5)	30 (6)
Cardiovascular		
Vasodilation	128 (25)	106 (21)
Hypertension	25 (5)	36 (7)
Digestive		
Nausea	94 (19)	106 (21)
Constipation	47 (9)	66 (13)
Diarrhea	40 (8)	33 (6)
Vomiting	38 (8)	36 (7)
Anorexia	26 (5)	46 (9)
Metabolic and Nutritional		
Peripheral edema	51 (10)	41 (8)
Musculoskeletal		
Bone pain	54 (11)	52 (10)
Nervous		
Dizziness	30 (6)	22 (4)
Insomnia	30 (6)	38 (7)

Depression	23 (5)	32 (6)
Hypertonia	16 (3)	26 (5)
Respiratory		
Cough increased	55 (11)	52 (10)
Dyspnea	51 (10)	47 (9)
Pharyngitis	49 (10)	68 (13)
Skin and appendages		
Rash	38 (8)	34 (8)
Urogenital		
Leukorrhea	9 (2)	31 (6)

* A patient may have had more than 1 adverse event.

Less frequent adverse experiences reported in patients receiving anastrozole tablets 1 mg in either Trial 0030 or Trial 0027 were similar to those reported for second-line therapy.

Based on results from second-line therapy and the established safety profile of tamoxifen, the incidences of 9 pre-specified adverse event categories potentially causally related to one or both of the therapies because of their pharmacology were statistically analyzed. No significant differences were seen between treatment groups.

Table 4 – Number of Patients with Pre-specified Adverse Reactions in Trials 0030 and 0027

Adverse Reaction*	Number (n) and Percentage of Patients	Number (n) and Percentage of Patients
	Anastrozole tablets 1 mg (n=506) n (%)	NOLVADEX 20 mg (n=511) n (%)
Depression		
Tumor Flare	23 (5)	32 (6)
Thromboembolic Disease†	15 (3)	18 (4)
Venous†	18 (4)	33 (6)
Coronary and Cerebral‡	5	15
Gastrointestinal Disturbance	13	19
Hot Flushes	170 (34)	196 (38)
Vaginal Dryness	134 (26)	118 (23)
Lethargy	9 (2)	3 (1)
Vaginal Bleeding	6 (1)	15 (3)
Weight Gain	5 (1)	11 (2)
	11 (2)	8 (2)

* A patient may have had more than 1 adverse event.

† Includes pulmonary embolus, thrombophlebitis, retinal vein thrombosis.

‡ Includes myocardial infarction, myocardial ischemia, angina pectoris, cerebrovascular accident, cerebral ischemia and cerebral infarct.

Second-Line Therapy

Anastrozole tablets were tolerated in two controlled clinical trials (i.e., Trials 0004 and 0005), with less than 3.3% of the anastrozole tablets-treated patients and 4.0% of the megestrol acetate-treated patients withdrawing due to an adverse reaction.

The principal adverse reaction more common with anastrozole tablets than megestrol acetate was diarrhea. Adverse reactions reported in greater than 5% of the patients in any of the treatment groups in these two controlled clinical trials, regardless of causality, are presented below:

Table 5 – Number (N) and Percentage of Patients with Adverse Reactions in Trials 0004 and 0005

Adverse Reaction*	Anastrozole tablets 1 mg (N=262) n (%)	Anastrozole tablets 10 mg (N=246) n (%)	Megestrol Acetate 160 mg (N=253) n (%)
Asthenia	42 (16)	33 (13)	47 (19)
Nausea	41 (16)	48 (20)	28 (11)
Headache	34 (13)	44 (18)	24 (9)
Hot Flashes	32 (12)	29 (11)	21 (8)
Pain	28 (11)	38 (15)	29 (11)
Back Pain	28 (11)	26 (11)	19 (8)
Dyspnea	24 (9)	27 (11)	53 (21)
Vomiting	24 (9)	26 (11)	16 (6)
Cough Increased	22 (8)	18 (7)	19 (8)
Diarrhea	22 (8)	18 (7)	7 (3)
Constipation	18 (7)	18 (7)	21 (8)
Abdominal Pain	18 (7)	14 (6)	18 (7)
Anorexia	18 (7)	19 (8)	11 (4)
Bone Pain	17 (6)	26 (12)	19 (8)
Pharyngitis	16 (6)	23 (9)	15 (6)
Dizziness	16 (6)	12 (5)	15 (6)
Rash	15 (6)	15 (6)	19 (8)
Dry Mouth	15 (6)	11 (4)	13 (5)
Peripheral Edema	14 (5)	21 (9)	28 (11)
Pelvic Pain	14 (5)	17 (7)	13 (5)
Depression	14 (5)	6 (2)	5 (2)
Chest Pain	13 (5)	18 (7)	13 (5)
Paresthesia	12 (5)	15 (6)	9 (4)
Vaginal	6 (2)	4 (2)	13 (5)
Hemorrhage	4 (2)	9 (4)	30 (12)
Weight Gain	4 (2)	3 (1)	16 (6)
Sweating	0 (0)	1 (0)	13 (5)
Increased Appetite			

* A patient may have had more than one adverse reaction.

Other less frequent (2% to 5%) adverse reactions reported in patients receiving anastrozole tablets 1 mg in either Trial 0004 or Trial 0005 are listed below. These adverse experiences are listed by body system and are in order of decreasing frequency within each body system regardless of assessed causality.

Body as a Whole: Flu syndrome; fever; neck pain; malaise; accidental injury; infection

Cardiovascular: Hypertension; thrombophlebitis

Hepatic: Gamma GT increased; SGOT increased; SGPT increased

Hematologic: Anemia; leukopenia

Metabolic and Nutritional: Alkaline phosphatase increased; weight loss
Mean serum total cholesterol levels increased by 0.5 mmol/L among patients receiving anastrozole tablets. Increases in LDL cholesterol have been shown to contribute to these changes.

Musculoskeletal: Myalgia; arthralgia; pathological fracture

Nervous: Somnolence; confusion; insomnia; anxiety; nervousness

Respiratory: Sinusitis; bronchitis; rhinitis

Skin and Appendages: Hair thinning (alopecia); pruritus

Urogenital: Urinary tract infection; breast pain

The incidences of the following adverse event groups potentially causally related to one or both of the therapies because of their pharmacology, were statistically analyzed: weight gain, edema, thromboembolic disease, gastrointestinal disturbance, hot flushes, and vaginal dryness. These six groups, and the adverse reactions captured in the groups, were prospectively defined. The results are shown in the table below.

Table 6 – Number (n) and Percentage of Patients with Pre-specified Adverse Reactions in Trials 0004 and 0005

Adverse Event Group	Anastrozole tablets 1 mg (N=262) n (%)	Anastrozole tablets 10 mg (N=246) n (%)	Megestrol Acetate 160 mg (N=253) n (%)
Gastrointestinal Disturbance	77 (29)	81 (33)	54 (21)
Hot Flushes	33 (13)	29 (12)	35 (14)
Edema	19 (7)	28 (11)	35 (14)
Thromboembolic Disease	9 (3)	4 (2)	12 (5)
Vaginal Dryness	5 (2)	3 (1)	2 (1)
Weight Gain	4 (2)	10 (4)	30 (12)

6.2 Post-Marketing Experience

Hepatobiliary events including increases in alkaline phosphatase, alanine aminotransferase, aspartate aminotransferase have been reported ($\geq 1\%$ and $< 10\%$) and gamma-GT, bilirubin and hepatitis have been reported ($\geq 0.1\%$ and $< 1\%$) in patients receiving anastrozole tablets.

Anastrozole tablets may also be associated with rash including cases of mucocutaneous disorders such as erythema multiforme and Stevens-Johnson syndrome.

Cases of allergic reactions including angioedema, urticaria and anaphylaxis have been reported in patients receiving anastrozole tablets. [see Contraindications (4.2)]

Trigger finger has been reported ($\geq 0.1\%$ and $< 1\%$) in patients receiving anastrozole tablets.

7 DRUG INTERACTIONS

7.1 Tamoxifen

Co-administration of anastrozole and tamoxifen in breast cancer patients reduced anastrozole plasma concentration by 27%. However, the coadministration of anastrozole and tamoxifen did not affect the pharmacokinetics of tamoxifen or Ndesmethyltamoxifen. At a median follow-up of 33 months, the combination of anastrozole tablets and tamoxifen did not demonstrate any efficacy benefit when compared with tamoxifen in all patients as well as in the hormone receptor-positive subpopulation. This treatment arm was discontinued from the trial. [see *Clinical Studies (14.1)*]. Based on clinical and pharmacokinetic results from the ATAC trial, tamoxifen should not be administered with anastrozole.

7.2 Estrogen

Estrogen-containing therapies should not be used with anastrozole tablets as they may diminish its pharmacological action.

7.3 Warfarin

In a study conducted in 16 male volunteers, anastrozole did not alter the exposure (as measured by C_{max} and AUC) and anticoagulant activity (as measured by prothrombin time, activated partial thromboplastin time, and thrombin time) of both R- and S-warfarin.

7.4 Cytochrome P450

Based on *in vitro* and *in vivo* results, it is unlikely that co-administration of anastrozole tablets 1 mg will affect other drugs as a result inhibition of cytochrome P450 [see *Clinical Pharmacology (12.3)*].

8 USE IN SPECIFIC POPULATIONS

8.1 Pregnancy

PREGNANCY CATEGORY X [see *Contraindications (4.1)*]

Anastrozole tablets may cause fetal harm when administered to a pregnant woman and offers no clinical benefit to premenopausal women with breast cancer. Anastrozole tablets are contraindicated in women who are or may become pregnant. In animal studies, anastrozole caused pregnancy failure, increased pregnancy loss, and signs of delayed fetal development. There are no studies of anastrozole tablets use in pregnant women. If anastrozole tablets are used during pregnancy, or if the patient becomes pregnant while receiving this drug, the patient should be apprised of the potential hazard to the fetus and potential risk for pregnancy loss.

In animal reproduction studies, pregnant rats and rabbits received anastrozole during organogenesis at doses equal to or greater than 1 (rats) and 1/3 (rabbits) the recommended human dose on a mg/m² basis. In both species, anastrozole crossed the placenta, and there was increased pregnancy loss (increased pre- and/or post-implantation loss, increased resorption, and decreased numbers of live fetuses). In rats, these effects were dose related, and placental weights were significantly increased. Fetotoxicity, including delayed fetal development (i.e., incomplete ossification and depressed fetal body weights), occurred in rats at anastrozole doses that produced peak plasma levels 19 times higher than serum levels in humans at the therapeutic dose (AUC_{0-24hr} 9 times higher). In rabbits, anastrozole caused pregnancy failure at doses equal to or greater than 16 times the recommended human dose on a mg/m² basis. [see *Animal Toxicology and/or Pharmacology (13.2)*]

8.3 Nursing Mothers

It is not known if anastrozole is excreted in human milk. Because many drugs are excreted in human milk and because of the tumorigenicity shown for anastrozole in animal studies, or the potential for serious adverse reactions in nursing infants, a decision should be made whether to discontinue nursing or to discontinue the drug, taking into account the importance of the drug to the mother.

8.4 Pediatric Use

The efficacy of anastrozole tablets in the treatment of pubertal gynecomastia in adolescent boys and in the treatment of precocious puberty in girls with McCune-Albright Syndrome has not been demonstrated.

Labeling describing clinical trials and pharmacokinetic studies of anastrozole in pubertal boys of adolescent age with gynecomastia and in girls with McCune- Albright Syndrome and progressive precocious puberty is approved for AstraZeneca Pharmaceuticals LP's Arimidex® . However, due to AstraZeneca Pharmaceuticals LP's marketing exclusivity rights, a description of those trials and studies is not approved for this anastrozole labeling.

8.5 Geriatric Use

In studies 0030 and 0027 about 50% of patients were 65 or older. Patients \geq 65 years of age had moderately better tumor response and time to tumor progression than patients $<$ 65 years of age regardless of randomized treatment. In studies 0004 and 0005 50% of patients were 65 or older. Response rates and time to progression were similar for the over 65 and younger patients.

In the ATAC study 45% of patients were 65 years of age or older. The efficacy of anastrozole tablets compared to tamoxifen in patients who were 65 years or older (N=1413 for anastrozole tablets and N=1410 for tamoxifen, the hazard ratio for disease-free survival was 0.93 (95% CI: 0.80, 1.08)) was less than efficacy observed in patients who were less than 65 years of age (N=1712 for anastrozole tablets and N=1706 for tamoxifen, the hazard ratio for disease-free survival was 0.79 (95% CI: 0.67, 0.94)).

The pharmacokinetics of anastrozole are not affected by age.

8.6 Renal Impairment

Since only about 10% of anastrozole is excreted unchanged in the urine, the renal impairment does not influence the total body clearance. Dosage adjustment in patients with renal impairment is not necessary [see *Dosage and Administration (2.1) and Clinical Pharmacology (12.3)*].

8.7 Hepatic Impairment

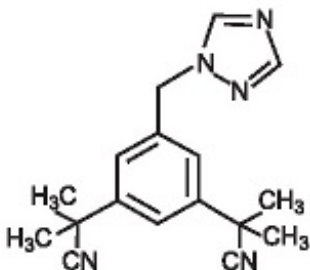
The plasma anastrozole concentrations in the subjects with hepatic cirrhosis were within the range of concentrations seen in normal subjects across all clinical trials. Therefore, dosage adjustment is also not necessary in patients with stable hepatic cirrhosis. Anastrozole tablets have not been studied in patients with severe hepatic impairment [see *Dosage and Administration (2.2) and Clinical Pharmacology (12.3)*].

10 OVERDOSAGE

Clinical trials have been conducted with anastrozole tablets, up to 60 mg in a single dose given to healthy male volunteers and up to 10 mg daily given to postmenopausal women with advanced breast cancer; these dosages were tolerated. A single dose of anastrozole tablets that results in life-threatening symptoms has not been established. There is no specific antidote to overdose and treatment must be symptomatic. In the management of an overdose, consider that multiple agents may have been taken. Vomiting may be induced if the patient is alert. Dialysis may be helpful because anastrozole tablets are not highly protein bound. General supportive care, including frequent monitoring of vital signs and close observation of the patient, is indicated.

11 DESCRIPTION

Anastrozole tablets for oral administration contain 1 mg of anastrozole, a non-steroidal aromatase inhibitor. It is chemically described as 1,3-Benzenediacetonitrile, a, a, a', a'-tetramethyl-5-(1H-1,2,4-triazol-1-ylmethyl). Its molecular formula is C₁₇H₁₉N₅ and its structural formula is:



Anastrozole is an off-white powder with a molecular weight of 293.4. Anastrozole has moderate aqueous solubility (0.5 mg/mL at 25°C); solubility is independent of pH in the physiological range. Anastrozole is freely soluble in methanol, acetone, ethanol, and tetrahydrofuran, and very soluble in acetonitrile.

Each tablet contains as inactive ingredients: lactose monohydrate, magnesium stearate, hypromellose, polyethylene glycol, povidone, sodium starch glycolate and titanium dioxide.

12 CLINICAL PHARMACOLOGY

12.1 Mechanism of Action

The growth of many cancers of the breast is stimulated or maintained by estrogens. Treatment of breast cancer thought to be hormonally responsive (i.e., estrogen and/or progesterone receptor positive or receptor unknown) has included a variety of efforts to decrease estrogen levels (ovariectomy, adrenalectomy, hypophysectomy) or inhibit estrogen effects (antiestrogens and progestational agents). These interventions lead to decreased tumor mass or delayed progression of tumor growth in some women.

In postmenopausal women, estrogens are mainly derived from the action of the aromatase enzyme, which converts adrenal androgens (primarily androstenedione and testosterone) to estrone and estradiol. The suppression of estrogen biosynthesis in peripheral tissues and in the cancer tissue itself can therefore be achieved by specifically inhibiting the aromatase enzyme.

Anastrozole is a potent and selective non-steroidal aromatase inhibitor. It significantly lowers serum estradiol concentrations and has no detectable effect on formation of adrenal corticosteroids or aldosterone.

12.2 Pharmacodynamics

Effect on Estradiol

Mean serum concentrations of estradiol were evaluated in multiple daily dosing trials with 0.5, 1, 3, 5, and 10 mg of anastrozole tablets in postmenopausal women with advanced breast cancer. Clinically significant suppression of serum estradiol was seen with all doses. Doses of 1 mg and higher resulted in suppression of mean serum concentrations of estradiol to the lower limit of detection (3.7 pmol/L). The recommended daily dose, anastrozole tablets 1 mg, reduced estradiol by approximately 70% within 24 hours and by approximately 80% after 14 days of daily dosing. Suppression of serum estradiol was maintained for up to 6 days after cessation of daily dosing with anastrozole tablets 1 mg.

The effect of anastrozole tablets in premenopausal women with early or advanced breast cancer has not been studied. Because aromatization of adrenal androgens is not a significant source of estradiol in premenopausal women, anastrozole tablets would not be expected to lower estradiol levels in premenopausal women.

Effect on Corticosteroids

In multiple daily dosing trials with 3, 5, and 10 mg, the selectivity of anastrozole was assessed by examining effects on corticosteroid synthesis. For all doses, anastrozole did not affect cortisol or aldosterone secretion at baseline or in response to ACTH. No glucocorticoid or mineralocorticoid replacement therapy is necessary with anastrozole.

Other Endocrine Effects

In multiple daily dosing trials with 5 and 10 mg, thyroid stimulating hormone (TSH) was measured; there was no increase in TSH during the administration of anastrozole tablets. Anastrozole tablets does not possess direct progestogenic, androgenic, or estrogenic activity in animals, but does perturb the circulating levels of progesterone, androgens, and estrogens.

12.3 Pharmacokinetics

Absorption

Inhibition of aromatase activity is primarily due to anastrozole, the parent drug. Absorption of anastrozole is rapid and maximum plasma concentrations typically occur within 2 hours of dosing under fasted conditions. Studies with radiolabeled drug have demonstrated that orally administered anastrozole is well absorbed into the systemic circulation. Food reduces the rate but not the overall extent of anastrozole absorption. The mean C_{max} of anastrozole decreased by 16% and the median T_{max} was delayed from 2 to 5 hours when anastrozole was administered 30 minutes after food. The pharmacokinetics of anastrozole are linear over the dose range of 1 to 20 mg, and do not change with repeated dosing. The pharmacokinetics of anastrozole were similar in patients and healthy volunteers.

Distribution

Steady-state plasma levels are approximately 3- to 4-fold higher than levels observed after a single dose of anastrozole tablets. Plasma concentrations approach steady-state levels at about 7 days of once daily dosing. Anastrozole is 40% bound to plasma proteins in the therapeutic range.

Metabolism

Metabolism of anastrozole occurs by N-dealkylation, hydroxylation and glucuronidation. Three metabolites of anastrozole (triazole, a glucuronide conjugate of hydroxy-anastrozole, and a glucuronide conjugate of anastrozole itself) have been identified in human plasma and urine. The major circulating metabolite of anastrozole, triazole, lacks pharmacologic activity.

Anastrozole inhibited reactions catalyzed by cytochrome P450 1A2, 2C8/9, and 3A4 *in vitro* with K_i values which were approximately 30 times higher than the mean steady-state C_{max} values observed following a 1 mg daily dose. Anastrozole had no inhibitory effect on reactions catalyzed by cytochrome P450 2A6 or 2D6 *in vitro*. Administration of a single 30 mg/kg or multiple 10 mg/kg doses of anastrozole to healthy subjects had no effect on the clearance of antipyrine or urinary recovery of antipyrine metabolites.

Excretion

Eighty-five percent of radiolabeled anastrozole was recovered in feces and urine. Hepatic metabolism accounts for approximately 85% of anastrozole elimination. Renal elimination accounts for approximately 10% of total clearance. The mean elimination half-life of anastrozole is 50 hours.

Effect of Gender and Age

Anastrozole pharmacokinetics have been investigated in postmenopausal female volunteers and patients with breast cancer. No age related effects were seen over the range <50 to >80 years.

Effect of Race

Estradiol and estrone sulfate serum levels were similar between Japanese and Caucasian postmenopausal women who received 1 mg of anastrozole daily for 16 days. Anastrozole mean steady-state minimum plasma concentrations in Caucasian and Japanese postmenopausal women were 25.7 and 30.4 ng/mL, respectively.

Effect of Renal Impairment

Anastrozole pharmacokinetics have been investigated in subjects with renal impairment. Anastrozole renal clearance decreased proportionally with creatinine clearance and was approximately 50% lower in volunteers with severe renal impairment (creatinine clearance < 30 mL/min/1.73m²) compared to controls. Total clearance was only reduced 10%. No dosage adjustment is needed for renal impairment. [see *Dosage and Administration (2.1) and Use in Specific Populations (8.6)*]

Effect of Hepatic Impairment

Anastrozole pharmacokinetics have been investigated in subjects with hepatic cirrhosis related to alcohol abuse. The apparent oral clearance (CL/F) of anastrozole was approximately 30% lower in

subjects with stable hepatic cirrhosis than in control subjects with normal liver function. However, these plasma concentrations were still within the range of values observed in normal subjects. The effect of severe hepatic impairment was not studied. No dose adjustment is necessary for stable hepatic cirrhosis. [see Dosage and Administration (2.2) and Use in Specific Populations (8.7)]

13 NONCLINICAL TOXICOLOGY

13.1 Carcinogenesis, Mutagenesis, Impairment of Fertility

A conventional carcinogenesis study in rats at doses of 1.0 to 25 mg/kg/day (about 10 to 243 times the daily maximum recommended human dose on a mg/m² basis) administered by oral gavage for up to 2 years revealed an increase in the incidence of hepatocellular adenoma and carcinoma and uterine stromal polyps in females and thyroid adenoma in males at the high dose. A dose related increase was observed in the incidence of ovarian and uterine hyperplasia in females. At 25 mg/kg/day, plasma AUC_{0-24 hr} levels in rats were 110 to 125 times higher than the level exhibited in postmenopausal volunteers at the recommended dose. A separate carcinogenicity study in mice at oral doses of 5 to 50 mg/kg/day (about 24 to 243 times the daily maximum recommended human dose on a mg/m² basis) for up to 2 years produced an increase in the incidence of benign ovarian stromal, epithelial and granulosa cell tumors at all dose levels. A dose related increase in the incidence of ovarian hyperplasia was also observed in female mice. These ovarian changes are considered to be rodent-specific effects of aromatase inhibition and are of questionable significance to humans. The incidence of lymphosarcoma was increased in males and females at the high dose. At 50mg/kg/day, plasma AUC levels in mice were 35 to 40 times higher than the level exhibited in postmenopausal volunteers at the recommended dose.

Anastrozole tablets have not been shown to be mutagenic in *in vitro* tests (Ames and E. coli bacterial tests, CHO-K1 gene mutation assay) or clastogenic either *in vitro* (chromosome aberrations in human lymphocytes) or *in vivo* (micronucleus test in rats).

Oral administration of anastrozole to female rats (from 2 weeks before mating to pregnancy day 7) produced significant incidence of infertility and reduced numbers of viable pregnancies at 1 mg/kg/day (about 10 times the recommended human dose on a mg/m² basis and 9 times higher than the AUC_{0-24 hr} found in postmenopausal volunteers at the recommended dose). Preimplantation loss of ova or fetus was increased at doses equal to or greater than 0.02 mg/kg/day (about one-fifth the recommended human dose on a mg/m² basis). Recovery of fertility was observed following a 5-week non-dosing period which followed 3 weeks of dosing. It is not known whether these effects observed in female rats are indicative of impaired fertility in humans.

Multiple-dose studies in rats administered anastrozole for 6 months at doses equal to or greater than 1 mg/kg/day (which produced plasma anastrozole C_{SSmax} and AUC_{0-24 hr} that were 19 and 9 times higher than the respective values found in postmenopausal volunteers at the recommended dose) resulted in hypertrophy of the ovaries and the presence of follicular cysts. In addition, hyperplastic uteri were observed in 6-month studies in female dogs administered doses equal to or greater than 1 mg/kg/day (which produced plasma anastrozole C_{SSmax} and AUC_{0-24 hr} that were 22 times and 16 times higher than the respective values found in postmenopausal women at the recommended dose). It is not known whether these effects on the reproductive organs of animals are associated with impaired fertility in premenopausal women.

13.2 Animal Toxicology and/or Pharmacology

Reproductive Toxicology

Anastrozole has been found to cross the placenta following oral administration of 0.1 mg/kg in rats and rabbits (about 1 and 1.9 times the recommended human dose, respectively, on a mg/m² basis). Studies in both rats and rabbits at doses equal to or greater than 0.1 and 0.02 mg/kg/day, respectively (about 1 and 1/3, respectively, the recommended human dose on a mg/m² basis), administered during the period of organogenesis showed that anastrozole increased pregnancy loss (increased pre- and/or postimplantation loss, increased resorption, and decreased numbers of live fetuses); effects were dose related in rats. Placental weights were significantly increased in rats at doses of 0.1 mg/kg/day or more.

Evidence of fetotoxicity, including delayed fetal development (i.e., incomplete ossification and

depressed fetal body weights), was observed in rats administered doses of 1 mg/kg/day (which produced plasma anastrozole C_{ssmax} and $AUC_{0-24\text{ hr}}$ that were 19 times and 9 times higher than the respective values found in postmenopausal volunteers at the recommended dose). There was no evidence of teratogenicity in rats administered doses up to 1.0 mg/kg/day. In rabbits, anastrozole caused pregnancy failure at doses equal to or greater than 1.0 mg/kg/day (about 16 times the recommended human dose on a mg/m² basis); there was no evidence of teratogenicity in rabbits administered 0.2 mg/kg/day (about 3 times the recommended human dose on a mg/m² basis).

14 CLINICAL STUDIES

14.1 Adjuvant Treatment of Breast Cancer in Postmenopausal Women

A multicenter, double-blind trial (ATAC) randomized 9,366 postmenopausal women with operable breast cancer to adjuvant treatment with anastrozole tablets 1 mg daily, tamoxifen 20 mg daily, or a combination of the two treatments for five years or until recurrence of the disease.

The primary endpoint of the trial was disease-free survival (i.e., time to occurrence of a distant or local recurrence, or contralateral breast cancer or death from any cause). Secondary endpoints of the trial included distant disease-free survival, the incidence of contralateral breast cancer and overall survival. At a median follow-up of 33 months, the combination of anastrozole tablets and tamoxifen did not demonstrate any efficacy benefit when compared with tamoxifen in all patients as well as in the hormone receptor positive subpopulation. This treatment arm was discontinued from the trial. Based on clinical and pharmacokinetic results from the ATAC trial, tamoxifen should not be administered with anastrozole. [see Drug Interactions (7.1)]

Demographic and other baseline characteristics were similar among the three treatment groups (see Table 7).

Table 7 – Demographic and Baseline Characteristics for ATAC Trial

Demographic Characteristic	Anastrozole tablets 1 mg (N*=3125)	Tamoxifen 20 mg (N*=3116)	Anastrozole tablets 1 mg plus Tamoxifen 20 mg (N*=3125)
Mean age (yrs.)	64.1	64.1	64.3
Age Range (yrs.)	38.1 - 92.8	32.8 - 94.9	37.0 - 92.2
Age Distribution (%)			
LT45 yrs.	0.7	0.4	0.5
45-60 yrs.	34.6	35.0	34.5
GT60 LT70 yrs.	38.0	37.1	37.7
GT70 yrs.	26.7	27.4	27.3
Mean Weight (kg)	70.8	71.1	71.3
Receptor Status (%)			
Positive‡	83.5	83.1	84.0
Negative§	7.4	8.0	7.0
Other¶	8.8	8.6	9.0
Other Treatment (%) prior to Randomization			
Mastectomy	47.8	47.3	48.1
Breast conservation#	52.3	52.8	51.9
Axillary surgery	95.5	95.7	95.2
Radiotherapy	63.3	62.5	61.9
Chemotherapy	22.3	20.8	20.8
Neoadjuvant Tamoxifen	1.6	1.6	1.7

Primary Tumor Size (%)			
T1 (LTE2 cm)	63.9	62.9	64.1
T2 (GT2 cm and LTE5 cm)	32.6	34.2	32.9
T3 (GT5 cm)	2.7	2.2	2.3
Nodal Status (%)			
Node positive	34.9	33.6	33.5
1-3 (# of nodes)	24.4	24.4	24.3
4-9	7.5	6.4	6.8
GT9	2.9	2.7	2.3
Tumor Grade (%)			
Well-differentiated	20.8	20.5	21.2
Moderately differentiated	46.8	47.8	46.5
Poorly/undifferentiated	23.7	23.3	23.7
Not assessed/recorded	8.7	8.4	8.5

* N=Number of patients randomized to the treatment

† The combination arm was discontinued due to lack of efficacy benefit at 33 months of follow-up

‡ Includes patients who were estrogen receptor (ER) positive or progesterone receptor (PgR) positive, or both positive

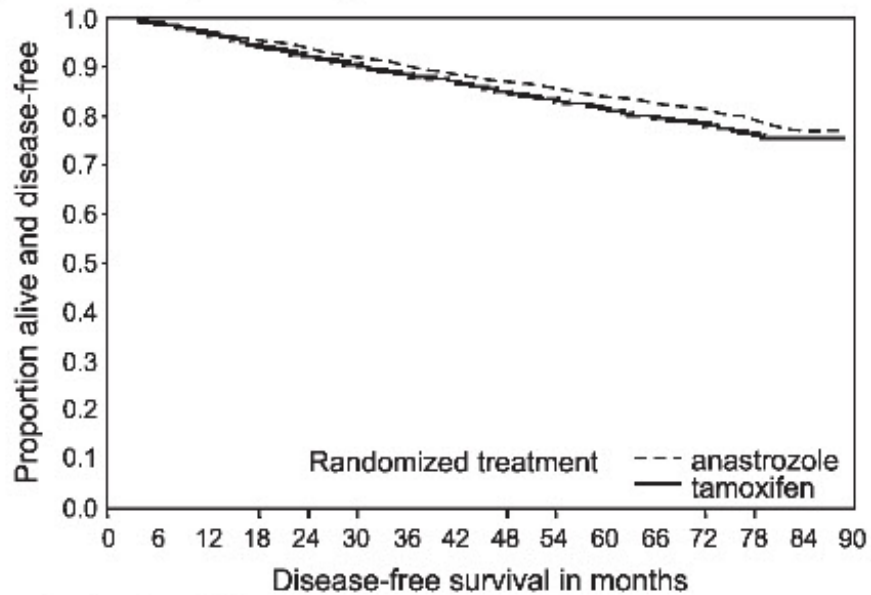
§ Includes patients with both ER negative and PgR negative receptor status

¶ Includes all other combinations of ER and PgR receptor status unknown

Among the patients who had breast conservation, radiotherapy was administered to 95.0% of patients in the anastrozole tablets arm, 94.1% in the tamoxifen arm and 94.5% in the anastrozole tablets plus tamoxifen arm.

Patients in the two monotherapy arms of the ATAC trial were treated for a median of 60 months (5 years) and followed for a median of 68 months. Disease-free survival in the intent-to-treat population was statistically significantly improved [Hazard Ratio (HR) = 0.87, 95% CI: 0.78, 0.97, p=0.0127] in the anastrozole tablets arm compared to the tamoxifen arm. In the hormone receptor-positive subpopulation representing about 84% of the trial patients, disease-free survival was also statistically significantly improved (HR =0.83, 95% CI: 0.73, 0.94, p=0.0049) in the anastrozole tablets arm compared to the tamoxifen arm.

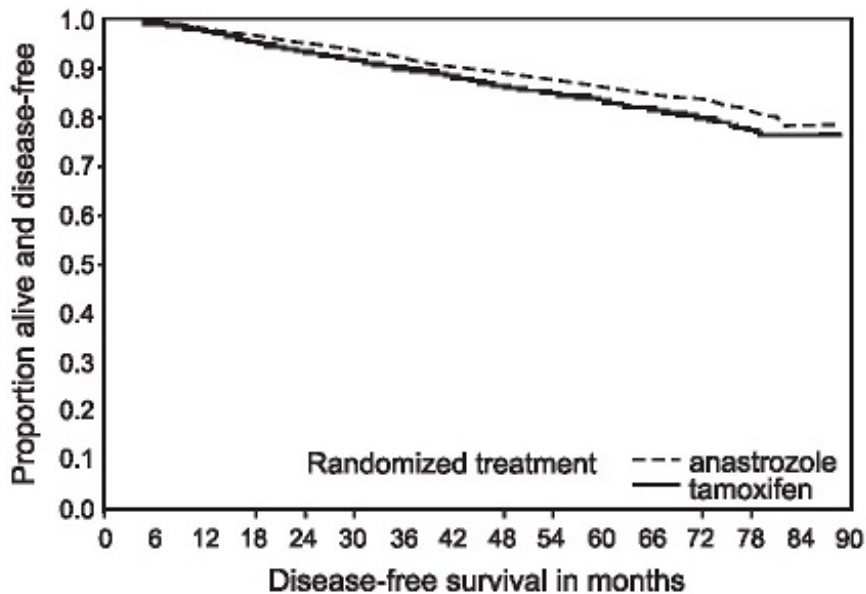
Figure 1 — Disease-Free Survival Kaplan Meier Survival Curve for all Patients Randomized to Anastrozole Tablets or Tamoxifen Monotherapy in the ATAC trial (Intent-to-Treat)



Number of patients at risk:

anastrozole	3125	3004	2874	2757	2645	2350	984	51
tamoxifen	3116	2992	2835	2709	2575	2273	933	47

Figure 2 — Disease-free Survival for Hormone Receptor-Positive Subpopulation of Patients Randomized to Anastrozole Tablets or Tamoxifen Monotherapy in the ATAC Trial



Number of patients at risk:

anastrozole	2618	2540	2448	2355	2268	2014	830	42
tamoxifen	2598	2516	2398	2304	2189	1932	774	36

The survival data with 68 months follow-up is presented in Table 9.

In the group of patients who had previous adjuvant chemotherapy (N=698 for anastrozole tablets and N=647 for tamoxifen), the hazard ratio for disease-free survival was 0.91(95% CI: 0.73 to 1.13) in the anastrozole tablets arm compared to the tamoxifen arm.

The frequency of individual events in the intent-to-treat population and the hormone receptor-positive subpopulation are described in Table 8.

Table 8 – All Recurrence and Death Events*

	Intent-To-Treat Population‡		Hormone Receptor-Positive Subpopulation‡	
	Anastrozole tablets 1 mg (N†=3125)	Tamoxifen 20 mg (N†=3116)	Anastrozole tablets 1 mg (N†=2618)	Tamoxifen 20 mg (N†=2598)
Median Duration of Therapy (mo)	60	60	60	60
Median Efficacy Follow-up (mo)	68	68	68	68
Loco-regional recurrence				
Contralateral breast cancer	119 (3.8)	149 (4.8)	76 (2.9)	101 (3.9)
Invasive	35 (1.1)	59 (1.9)	26 (1.0)	54 (2.1)
Ductal carcinoma in situ	27 (0.9)	52 (1.7)	21 (0.8)	48 (1.8)
Unknown	8 (0.3)	6 (0.2)	5 (0.2)	5 (0.2)
Distant recurrence	0	1 (LT0.1)	0	1 (LT0.1)
Death from Any Cause	324 (10.4)	375 (12.0)	226 (8.6)	265 (10.2)
Death breast cancer	411 (13.2)	420 (13.5)	296 (11.3)	301 (11.6)
Death other reason (including unknown)	218 (7.0)	248 (8.0)	138 (5.3)	160 (6.2)
	193 (6.2)	172 (5.5)	158 (6.0)	141 (5.4)

* The combination arm was discontinued due to lack of efficacy benefit at 33 months of follow-up

† N=Number of patients randomized

‡ Patients may fall into more than one category.

A summary of the study efficacy results is provided in Table 9.

Table 9 – ATAC Efficacy Summary*

	Intent-To-Treat Population		Hormone Receptor-Positive Subpopulation	
	Anastrozole tablets 1 mg (N=3125)	Tamoxifen 20 mg (N=3116)	Anastrozole tablets 1 mg (N=2618)	Tamoxifen 20 mg (N=2598)
	Number of Events		Number of Events	
Disease free Survival	575	651	424	497
Hazard ratio	0.87		0.83	
2-sided 95% CI	0.78 to 0.97		0.73 to 0.94	
p-value	0.0127		0.0049	
Distant Disease-free Survival	500	530	370	394
Hazard ratio	0.94		0.93	
2-sided 95% CI	0.83 to 1.06		0.80 to 1.07	

Overall Survival	411	420	296	301
Hazard ratio	0.97		0.97	
2-sided 95% CI	0.85 to 1.12		0.83 to 1.14	

* The combination arm was discontinued due to lack of efficacy benefit at 33 months of follow-up.

14.2 First-Line Therapy in Postmenopausal Women with Advanced Breast Cancer

Two double-blind, controlled clinical studies of similar design (0030, a North American study and 0027, a predominately European study) were conducted to assess the efficacy of anastrozole tablets compared with tamoxifen as first-line therapy for hormone receptor positive or hormone receptor unknown locally advanced or metastatic breast cancer in postmenopausal women. A total of 1021 patients between the ages of 30 and 92 years old were randomized to receive trial treatment. Patients were randomized to receive 1 mg of anastrozole tablets once daily or 20 mg of tamoxifen once daily. The primary end points for both trials were time to tumor progression, objective tumor response rate, and safety.

Demographics and other baseline characteristics, including patients who had measurable and no measurable disease, patients who were given previous adjuvant therapy, the site of metastatic disease and ethnic origin were similar for the two treatment groups for both trials. The following table summarizes the hormone receptor status at entry for all randomized patients in trials 0030 and 0027.

Table 10 – Demographic and Other Baseline Characteristics

	Number (%) of subjects			
	Trial 0030		Trial 0027	
	Anastrozole tablets 1 mg (n=171)	Tamoxifen 20 mg (n=182)	Anastrozole tablets 1 mg (n=340)	Tamoxifen 20 mg (n=328)
Receptor status				
ER* and/or PgR [†]	151 (88.3)	162 (89.0)	154 (45.3)	144 (43.9)
ER* unknown, PgR [†] Unknown	19 (11.1)	20 (11.0)	185 (54.4)	183 (55.8)

* ER=Estrogen receptor

† PgR=Progesterone receptor

For the primary endpoints, trial 0030 showed that anastrozole tablets had a statistically significant advantage over tamoxifen (p=0.006) for time to tumor progression; objective tumor response rates were similar for anastrozole tablets and tamoxifen. Trial 0027 showed that anastrozole tablets and tamoxifen had similar objective tumor response rates and time to tumor progression (see Table 11 and Figure 3 and 4).

Table 11 below summarizes the results of trial 0030 and trial 0027 for the primary efficacy endpoints.

Table 11 – Efficacy Results of First-line Treatment

Endpoint	Trial 0030		Trial 0027	
	Anastrozole tablets 1 mg (N=171)	Tamoxifen 20 mg (N=182)	Anastrozole tablets 1 mg (N=340)	Tamoxifen 20 mg (N=328)
Time to progression (TTP)				

Median TTP (months)	11.1	5.6	8.2	8.3
Number (%) of subjects who Progressed	114 (67%)	138 (76%)	249 (73%)	247 (75%)
Hazard ratio (LCL*) [†]		1.42 (1.15)		1.01 (0.87)
2-sided 95% CI [‡]		(1.11, 1.82)		(0.85, 1.20)
p-value [§]		0.006		0.920
Best objective response rate				
Number (%) of subjects With CR [¶] + PR [#]	36 (21.1%)	31 (17.0%)	112 (32.9%)	107 (32.6%)
Odds Ratio (LCL*) [◆]		1.30 (0.83)		1.01 (0.77)

* LCL=Lower Confidence Limit

† Tamoxifen:Anastrozole tablets

‡ CI=Confidence Interval

§ Two-sided Log Rank

¶ CR=Complete Response

PR=Partial Response

◆ Anastrozole tablets:Tamoxifen

Figure 3 — Kaplan-Meier probability of time to disease progression for all randomized patients (intent-to-treat) in Trial 0030

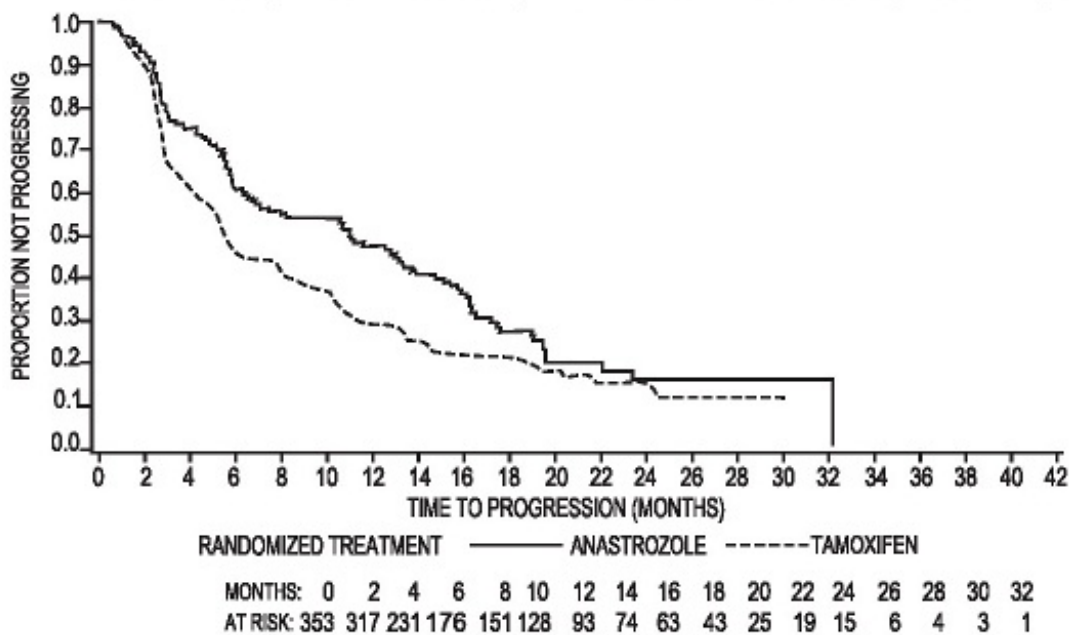
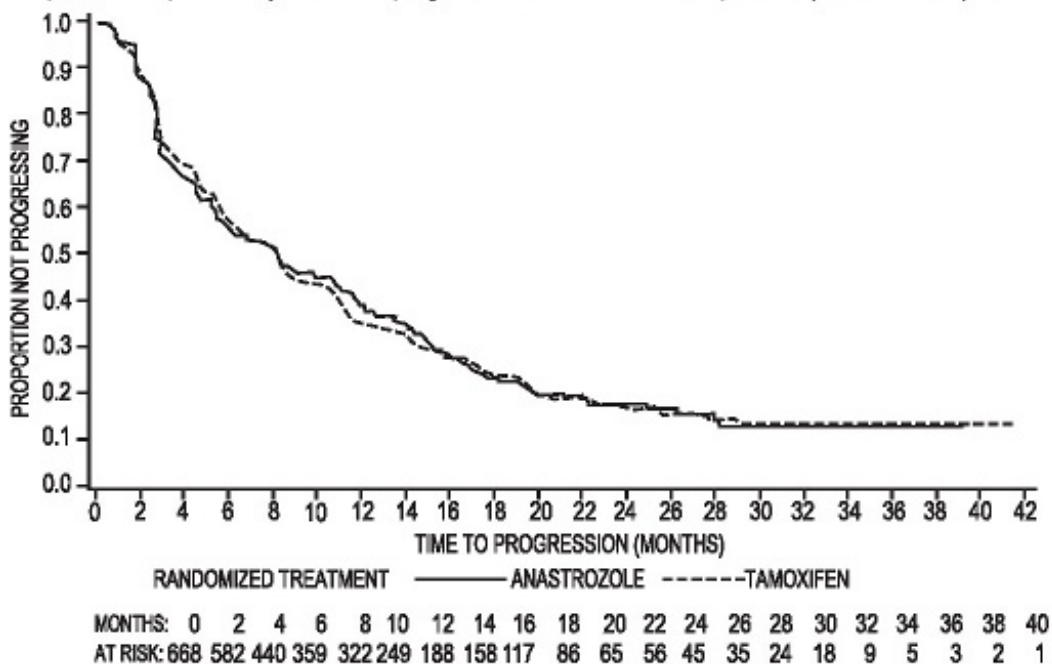


Figure 4 — Kaplan-Meier probability of time to progression for all randomized patients (intent-to-treat) in Trial 0027



Results from the secondary endpoints were supportive of the results of the primary efficacy endpoints. There were too few deaths occurring across treatment groups of both trials to draw conclusions on overall survival differences.

14.3 Second-Line Therapy in Postmenopausal Women with Advanced Breast Cancer who had Disease Progression following Tamoxifen Therapy

Anastrozole was studied in two controlled clinical trials (0004, a North American study; 0005, a predominately European study) in postmenopausal women with advanced breast cancer who had disease progression following tamoxifen therapy for either advanced or early breast cancer. Some of the patients had also received previous cytotoxic treatment. Most patients were ER-positive; a smaller fraction were ER-unknown or ER-negative; the ER-negative patients were eligible only if they had had a positive response to tamoxifen. Eligible patients with measurable and non-measurable disease were randomized to receive either a single daily dose of 1 mg or 10 mg of anastrozole tablets or megestrol acetate 40 mg four times a day. The studies were double-blinded with respect to anastrozole tablets. Time to progression and objective response (only patients with measurable disease could be considered partial responders) rates were the primary efficacy variables. Objective response rates were calculated based on the Union Internationale Contre le Cancer (UICC) criteria. The rate of prolonged (more than 24 weeks) stable disease, the rate of progression, and survival were also calculated.

Both trials included over 375 patients; demographics and other baseline characteristics were similar for the three treatment groups in each trial. Patients in the 0005 trial had responded better to prior tamoxifen treatment. Of the patients entered who had prior tamoxifen therapy for advanced disease (58% in Trial 0004; 57% in Trial 0005), 18% of these patients in Trial 0004 and 42% in Trial 0005 were reported by the primary investigator to have responded. In Trial 0004, 81% of patients were ER-positive, 13% were ER-unknown, and 6% were ER-negative. In Trial 0005, 58% of patients were ER-positive, 37% were ER-unknown, and 5% were ER-negative. In Trial 0004, 62% of patients had measurable disease compared to 79% in Trial 0005. The sites of metastatic disease were similar among treatment groups for each trial. On average, 40% of the patients had soft tissue metastases; 60% had bone metastases; and 40% had visceral (15% liver) metastases.

Efficacy results from the two studies were similar as presented in Table 12. In both studies there were no significant differences between treatment arms with respect to any of the efficacy parameters listed in the table below.

Table 12 – Efficacy Results of Second-line Treatment

	Anastrozole tablets 1 mg	Anastrozole tablets 10 mg	Megestrol Acetate 160 mg
Trial 0004			
(N. America)	(N=128)	(N=130)	(N=128)
Median Follow-up (months)*	31.3	30.9	32.9
Median Time to Death (months)	29.6	25.7	26.7
2 Year Survival Probability (%)	62.0	58.0	53.1
Median Time to Progression (months)	5.7	5.3	5.1
Objective Response (all patients) (%)	12.5	10.0	10.2
Stable Disease for GT24 weeks (%)	35.2	29.2	32.8
Progression (%)	86.7	85.4	90.6
Trial 0005			
(Europe, Australia, S. Africa)	(N=135)	(N=118)	(N=125)
Median Follow-up (months)*	31.0	30.9	31.5
Median Time to Death (months)	24.3	24.8	19.8
2 Year Survival Probability (%)	50.5	50.9	39.1
Median Time to Progression (months)	4.4	5.3	3.9
Objective Response (all patients) (%)	12.6	15.3	14.4
Stable Disease for GT24 weeks (%)	24.4	25.4	23.2
Progression (%)	91.9	89.8	92.0

* Surviving Patients

When data from the two controlled trials are pooled, the objective response rates and median times to progression and death were similar for patients randomized to anastrozole tablets 1 mg and megestrol acetate. There is, in this data, no indication that anastrozole tablets 10 mg are superior to anastrozole tablets 1 mg.

Table 13 – Pooled Efficacy Results of Second-line Treatment

Trials 0004 and 0005 (Pooled Data)	Anastrozole tablets 1 mg N=263	Anastrozole tablets 10 mg N=248	Megestrol Acetate 160 mg N=253
Median Time to Death (months)	26.7	25.5	22.5
2 Year Survival Probability (%)	56.1	54.6	46.3
Median Time to Progression	4.8	5.3	4.6
Objective Response (all patients) (%)	12.5	12.5	12.3

16 HOW SUPPLIED/STORAGE AND HANDLING

These tablets are supplied in bottles of 1000 tablets (NDC 67877-171-10)

Storage

Store at controlled room temperature, 20-25°C (68-77°F) [see USP].

17 PATIENT COUNSELING INFORMATION

17.1 Pregnancy

Patients should be advised that anastrozole tablets may cause fetal harm. They should also be advised that anastrozole tablets are not for use in premenopausal women; therefore, if they become pregnant they should stop taking anastrozole tablets and immediately contact their doctor.

17.2 Allergic (Hypersensitivity) Reactions

Patients should be informed of the possibility of serious allergic reactions with swelling of the face, lips, tongue and/or throat (angioedema) which may cause difficulty in swallowing and/or breathing and to immediately report this to their doctor.

17.3 Ischemic Cardiovascular Events

Patients with pre-existing ischemic heart disease should be informed that an increased incidence of cardiovascular events has been observed with anastrozole tablets use compared to tamoxifen use.

17.4 Bone Effects

Patients should be informed that anastrozole tablets lower the level of estrogen. This may lead to a loss of the mineral content of bones, which might decrease bone strength. A possible consequence of decreased mineral content of bones is an increase in the risk of fractures.

17.5 Cholesterol

Patients should be informed that an increased level of cholesterol might be seen while receiving anastrozole tablets.

17.6 Tamoxifen

Patients should be advised not to take anastrozole tablets with Tamoxifen.

17.7 FDA-Approved Patient Labeling

PATIENT INFORMATION

ANASTROZOLE TABLETS

Read the information that comes with anastrozole tablets before you start taking it and each time you get a refill. The information may have changed. This leaflet does not take the place of talking with your doctor about your medical condition or treatment. Talk with your doctor about anastrozole tablets when you start taking it and at regular checkups.

What are anastrozole tablets?

Anastrozole tablets are a prescription medicine used in women who have finished menopause (“the change of life”) for:

- treatment of early breast cancer
 - o after surgery, with or without radiation
 - o in women whose breast cancer is hormone receptor-positive
- first treatment of locally advanced or metastatic breast cancer, in women whose breast cancer is hormone receptor-positive or the hormone receptors are not known.
- treatment of advanced breast cancer, if the cancer has grown, or the disease has spread after tamoxifen therapy.

Anastrozole tablets do not work in women with breast cancer who have not finished menopause (premenopausal women).

Who should not take anastrozole tablets?

Do not take anastrozole tablets if you:

- are pregnant, think you may be pregnant, or plan to get pregnant. Anastrozole tablets may harm your unborn child. If you become pregnant while taking anastrozole tablets, tell your doctor right away.
- have not finished menopause (are premenopausal)
- are allergic to any of the ingredients in anastrozole tablets. See the end of this leaflet for a list of the

ingredients in anastrozole tablets.

- are a man or child

What is the most important information I should know about anastrozole tablets?

Anastrozole tablets may cause serious side effects including:

- **Heart disease.** Women with early breast cancer, who have a history of blockages in heart arteries (ischemic heart disease) and who take anastrozole tablets may have a slight increase in this type of heart disease compared to similar patients who take tamoxifen.

- o Stop taking anastrozole tablets and call your doctor right away if you have chest pain or shortness of breath. These can be symptoms of heart disease.

- **Osteoporosis (bone softening and weakening).** Anastrozole tablets lower estrogen in your body, which may cause your bones to become softer and weaker. This can increase your chance of fractures, specifically of the spine, hip and wrist. Your doctor may order a test for you called a bone mineral density study before you start taking anastrozole tablets and during treatment with anastrozole tablets as needed.

What should I tell my doctor before taking anastrozole tablets?

Anastrozole tablets may not be right for you. Before taking anastrozole tablets, tell your doctor about all your medical conditions, including if you:

- have not finished menopause. Talk to your doctor if you are not sure. See “Who should not take anastrozole tablets?”
- have had a previous heart problem
- have a condition called osteoporosis
- have high cholesterol
- are pregnant, planning to become pregnant, or breast feeding. See “Who should not take anastrozole tablets?”
- are nursing a baby. It is not known if anastrozole tablets pass into breast milk. You and your doctor should decide if you will take anastrozole tablets or breast feed. You should not do both.

Tell your doctor about all the medicines you take, including prescription and non-prescription medicines, vitamins, and herbal supplements. Especially tell your doctor if you take:

- **Tamoxifen.** You should not take **anastrozole tablets** with tamoxifen. Taking tamoxifen with anastrozole tablets may lower the amount of anastrozole tablets in your blood and may cause anastrozole tablets not to work as well.

- **Medicines containing estrogen.** Anastrozole tablets may not work if taken with one of these medicines:

- o hormone replacement therapy
 - o birth control pills
 - o estrogen creams
 - o vaginal rings
 - o vaginal suppositories

Know the medicines you take. Keep a list of them and show it to your doctor and pharmacist each time you get a new medicine.

How should I take anastrozole tablets?

- Take anastrozole tablets exactly as prescribed by your doctor. Keep taking anastrozole tablets for as long as your doctor prescribes it for you.
- Take one anastrozole tablet each day.
- Anastrozole tablets can be taken with or without food.
- If you miss a dose, take it as soon as you remember. If it is almost time for your next dose, skip the missed dose. Take your next regularly scheduled dose. Do not take two doses at the same time.
- If you have taken more anastrozole tablets than your doctor has prescribed, contact your doctor right away. Do not take any additional anastrozole tablets until instructed to do so by your doctor.

Talk with your doctor about any health changes you have while taking anastrozole tablets.

What are possible side effects of anastrozole tablets?

Anastrozole tablets can cause serious side effects including:

- See **“What is the most important information I should know about anastrozole tablets?”**
- **increased blood cholesterol (fat in the blood)**. Your doctor may check your cholesterol while you take anastrozole tablets therapy.
- **skin reactions**. Stop taking anastrozole tablets and call your doctor right away if you get any skin lesions, ulcers, or blisters.
- **severe allergic reactions**. Get medical help right away if you have:
 - swelling of the face, lips, tongue, or throat.
 - trouble swallowing
 - trouble breathing
- **liver problems**. Anastrozole tablets can cause inflammation of the liver and changes in blood tests of the liver function. Your doctor may monitor you for this. Stop taking anastrozole tablets and call your doctor right away if you have any of these signs or symptoms of a liver problem:
 - a general feeling of not being well
 - yellowing of the skin or whites of the eyes
 - pain on the right side of your abdomen

Common side effects in women taking anastrozole tablets include:

- hot flashes
- weakness
- joint pain
- carpal tunnel syndrome (tingling, pain, coldness, weakness in parts of the hand)
- pain
- sore throat
- mood changes
- high blood pressure
- depression
- nausea and vomiting
- thinning of the hair (hair loss)
- rash
- back pain
- sleep problems
- bone pain
- headache
- swelling
- increased cough
- shortness of breath
- lymphedema (build up of lymph fluid in the tissues of your affected arm)
- trigger finger (a condition in which one of your fingers or your thumb catches in a bent position)

Call your doctor for medical advice about side effects. You may report side effects to FDA at 1-800-FDA-1088.

HOW SHOULD I STORE ANASTROZOLE TABLETS?

- Store anastrozole tablets at 68°F to 77°F (20°C to 25°C).
- Keep anastrozole tablets and all medicines out of the reach of children.

General information about anastrozole tablets.

Medicines are sometimes prescribed for conditions that are not mentioned in patient information leaflets. Do not take anastrozole tablets for a condition for which it was not prescribed. Do not give anastrozole tablets to other people, even if they have the same symptoms you have. It may harm them.

This patient information leaflet summarizes the most important information about anastrozole tablets. If

you would like more information, talk with your doctor. You can ask your pharmacist or doctor for information about anastrozole tablets that is written for health professionals.

What are the ingredients in anastrozole tablets?

Active ingredient: anastrozole

Inactive ingredients: lactose monohydrate, magnesium stearate, hypromellose, polyethylene glycol, povidone, sodium starch glycolate and titanium dioxide.

Manufactured by:

Natco Pharma Limited

Kothur – 509 228. A.P. India.

Mfd for:

Ascend Laboratories, LLC

Montvale, NJ 07645

346036

Rev: 00/Apr/2010

ASCEND

Laboratories, LLC

NDC 67877-171-10

ANASTROZOLE TABLETS

1 mg

1000 tablets

Rx only

Dispense in original container

Mfd by: Natco Pharma Limited

Kothur - 509 228. A.P. India.

Each tablet contains
1 mg of anastrozole USP

USUAL DOSAGE:
See accompanying
Prescribing Information.

WARNING:
As with all medications,
Keep out of the reach
of children.

Store at controlled room
temperature, 20°-25°C
(68°-77°F) [see USP]

Rev.: 00/Apr/2010



NDC 67877-171-10

ANASTROZOLE TABLETS

1 mg

1000 tablets

Rx only

Mfd by: Natco Pharma Limited
Kothur – 509 228. A.P. India.

Mfd for:

Ascend Laboratories, LLC

Montvale, NJ 07645



345108

M.L.: 164/MN/AP/95/F/R

LOT

EXP

ANASTROZOLE

anastrozole tablet

Product Information			
Product Type	HUMAN PRESCRIPTION DRUG	Item Code (Source)	NDC:67877-171
Route of Administration	ORAL		

Active Ingredient/Active Moiety		
Ingredient Name	Basis of Strength	Strength
ANASTROZOLE (UNII: 2Z07MYW1AZ) (ANASTROZOLE - UNII:2Z07MYW1AZ)	ANASTROZOLE	1 mg

Inactive Ingredients	
Ingredient Name	Strength
LACTOSE MONOHYDRATE (UNII: EWQ57Q8I5X)	
MAGNESIUM STEARATE (UNII: 70097M6I30)	
HYPROMELLOSES (UNII: 3NXW29V3WO)	
POLYETHYLENE GLYCOL (UNII: 3WJQ0SDW1A)	
POVIDONE K30 (UNII: U725QWY32X)	
SODIUM STARCH GLYCOLATE TYPE A POTATO (UNII: 5856J3G2A2)	
TITANIUM DIOXIDE (UNII: 15FIX9V2JP)	

Product Characteristics			
Color	white	Score	no score
Shape	ROUND	Size	6mm
Flavor		Imprint Code	AN;1
Contains			

Packaging				
#	Item Code	Package Description	Marketing Start Date	Marketing End Date
1	NDC:67877-171-10	1000 in 1 BOTTLE		

Marketing Information			
Marketing Category	Application Number or Monograph Citation	Marketing Start Date	Marketing End Date
ANDA	ANDA079220	06/28/2010	

Labeler - Ascend Laboratories, LLC (141250469)