

## **GOODSENSE CHERRY COUGH DROPS- menthol lozenge**

**Geiss, Destin, Dunn**

-----

### **Menthol 5.8 mg**

### **Active ingredient (in each drop)**

Menthol 5.8 mg

### **Purpose**

Cough suppressant / Oral anesthetic

**Uses** temporarily relieves:

- cough as may occur with a cold
- occasional minor irritation and sore throat

### **Warnings**

**Sore throat warning:** if sore throat is severe, persists for more than 2 days, in accompanied or followed by fever, headache, rash, swelling, nausea, or vomiting, consult a doctor promptly. Of sore mouth symptoms do not improve in 7 days, see your dentist or doctor promptly. These symptoms may be serious.

### **Ask a doctor before use if you have:**

- persistent or chronic cough such as occurs with smoking, asthma, or emphysema
- cough accompanied by excessive phlegm (mucus)

### **Stop use and ask doctor if**

- cough persists for more than 7 days, tends to recur, or is accompanied by fever, rash, or persistent headache. These could be signs of a serious condition.
- sore throat is severe, or irritation, pain or redness lasts or worsens
- sore mouth does not improve in 7 days

**If pregnant or breast-feeding,** ask a health professional before use.

**Keep out of reach of children**

### **Directions**

adults and children 5 years and over - dissolve 1 lozenge slowly in mouth. Repeat every 2 hours as needed or as directed by a doctor.

children under 5 years - ask a doctor

### **Other information**

- 10 calories per drop
- do not use if bag is torn or open

**Inactive ingredients:** Corn starch, corn syrup, eucalyptus oil, FD&C red no. 40, glycerin, medium chain triglycerides, natural and artificial flavors, soybean oil, sucrose and water.

**Questions?** Or to report an adverse event call **1-800-245-2898**. Monday through Friday, 9AM to 4PM EST

# GOODSENSE®

**Soothing**

# Cough Drops

Menthol Cough Suppressant/Oral anesthetic

**80  
DROPS**

CLEAR  
WINDOW

**CHERRY FLAVOR**

- **Soothes Sore Throat Pain**
- **Temporarily Relieves Cough**

**\*Compare to active ingredient  
of Halls®**

Lot Code  
Expiration Date

\*This product is not manufactured  
or distributed by the registered  
trademark Halls® or by any of  
its affiliates.



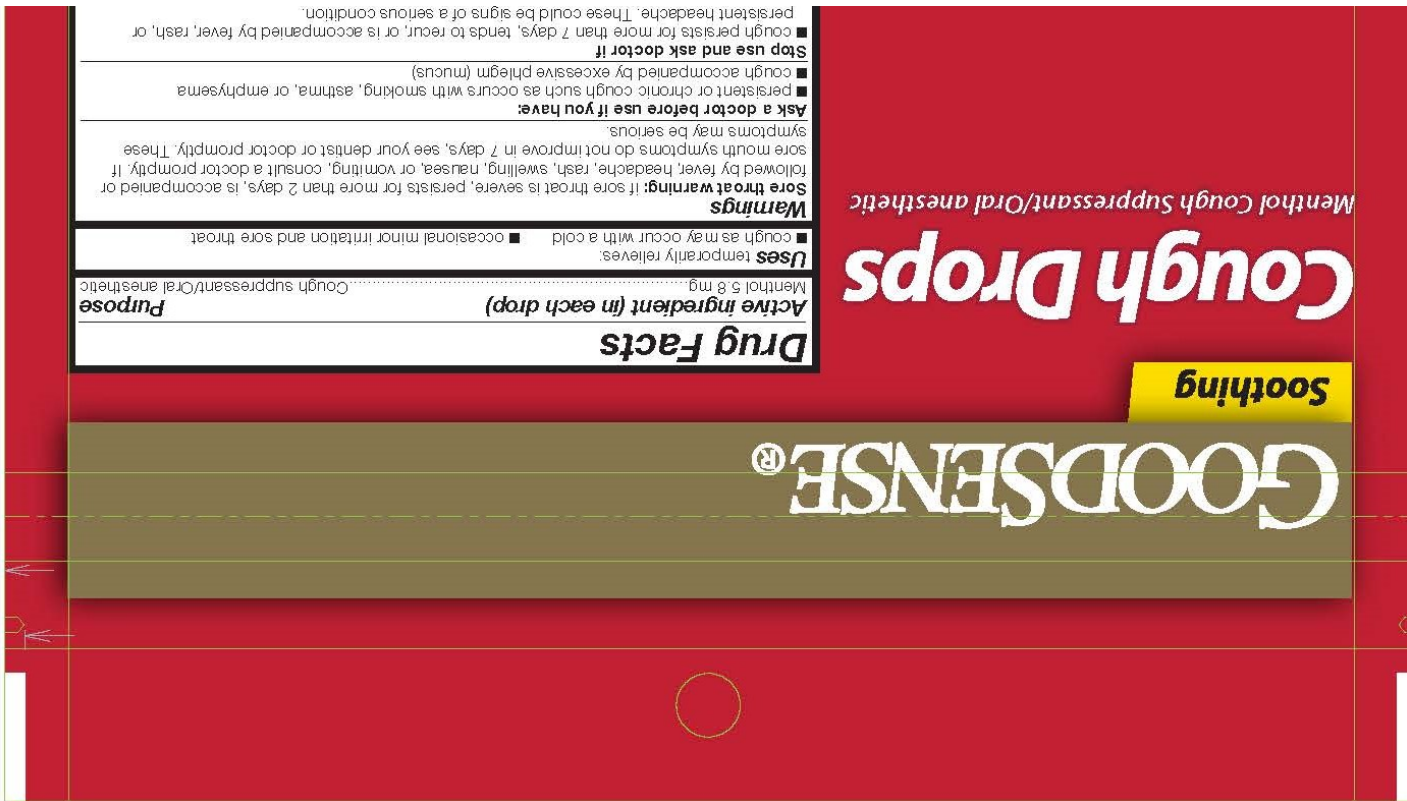
PN-60001810



Made in USA of U.S. and imported ingredients.

Distributed by:  
Perrigo Direct, Inc.  
Peachtree City, GA 30269  
www.PerrigoDirect.com  
GoodSense® is a registered  
trademark of L. Perrigo Company.

■ sore throat is severe, or irritation, pain or redness lasts or worsens	
■ sore mouth does not improve in 7 days	
■ If pregnant or breast-feeding, ask a health professional before use.	
Keep out of reach of children.	
<b>Directions</b>	
adults and children 5 years and over	dissolve 1 lozenge slowly in mouth. Repeat every 2 hours as needed or as directed by a doctor.
children under 5 years	ask a doctor
<b>Other information</b> ■ 10 calories per drop ■ do not use if bag is torn or open	
<b>Inactive ingredients</b> Corn starch, corn syrup, eucalyptus oil, FD&C red no. 40, glycerin, medium chain triglycerides, natural & artificial flavors, soybean oil, sucrose and water.	
<b>Questions?</b> Or to report an adverse event call 1-800-245-2898. Monday through Friday, 9AM to 4PM EST.	



## GOODSENSE CHERRY COUGH DROPS

menthol lozenge

### Product Information

Product Type	HUMAN OTC DRUG	Item Code (Source)	NDC:50804-022
Route of Administration	ORAL		

### Active Ingredient/Active Moiety

Ingredient Name	Basis of Strength	Strength
MENTHOL (UNII: L7T10EIP3A) (MENTHOL - UNII:L7T10EIP3A)	MENTHOL	5.8 mg

### Inactive Ingredients

Ingredient Name	Strength
WATER (UNII: 059QF0KO0R)	

### Product Characteristics

Color	red	Score	no score
Shape	OVAL	Size	17mm
Flavor	CHERRY	Imprint Code	B
Contains			

## Packaging

#	Item Code	Package Description	Marketing Start Date	Marketing End Date
1	NDC:50804-022-80	80 in 1 BAG; Type 0: Not a Combination Product	07/15/2021	



## Marketing Information

Marketing Category	Application Number or Monograph Citation	Marketing Start Date	Marketing End Date
OTC Monograph Drug	M012	07/15/2021	

**Labeler** - Geiss, Destin, Dunn (076059836)

**Registrant** - Bestco LLC (002149136)

## Establishment

Name	Address	ID/FEI	Business Operations
Bestco LLC		002149136	manufacture(50804-022)

