

# DICYCLOMINE HYDROCHLORIDE- dicyclomine hydrochloride capsule

## Upsher-Smith Laboratories, LLC

-----

### HIGHLIGHTS OF PRESCRIBING INFORMATION

These highlights do not include all the information needed to use DICYCLOMINE HYDROCHLORIDE CAPSULES safely and effectively. See full prescribing information for DICYCLOMINE HYDROCHLORIDE CAPSULES.

**DICYCLOMINE HYDROCHLORIDE capsules, for oral use**  
**Initial U.S. Approval: 1950**

### INDICATIONS AND USAGE

Dicyclomine hydrochloride is an antispasmodic and anticholinergic (antimuscarinic) agent indicated for the treatment of functional bowel/irritable bowel syndrome (1)

### DOSAGE AND ADMINISTRATION

Dosage for dicyclomine hydrochloride must be adjusted to individual patient needs (2). If a dose is missed, patients should continue the normal dosing schedule (2).

#### Oral in adults (2.1):

- Starting dose: 20 mg four times a day. After a week of treatment with the starting dose, the dose may be escalated to 40 mg four times a day, unless side effects limit dosage escalation
- Discontinue dicyclomine hydrochloride if efficacy is not achieved or side effects require doses less than 80 mg per day after two weeks of treatment

### DOSAGE FORMS AND STRENGTHS

Dicyclomine hydrochloride capsules, 10 mg (3)

### CONTRAINDICATIONS

- Infants less than 6 months of age (4)
- Glaucoma (4)
- Nursing mothers (4)
- Obstructive uropathy (4)
- Unstable cardiovascular status in acute hemorrhage (4)
- Obstructive disease of the gastrointestinal tract (4)
- Myasthenia gravis (4)
- Severe ulcerative colitis (4)
- Reflux esophagitis (4)

### WARNINGS AND PRECAUTIONS

- Cardiovascular conditions: worsening of conditions (5.2)
- Peripheral and central nervous system: heat prostration can occur with drug use (fever and heat stroke due to decreased sweating); drug should be discontinued, and supportive measures instituted (5.3)
- Psychosis and delirium have been reported in patients sensitive to anticholinergic drugs (such as elderly patients and/or in patients with mental illness): signs and symptoms resolve within 12 to 24 hours after discontinuation of dicyclomine hydrochloride (5.3)
- Myasthenia Gravis: overdose may lead to muscular weakness and paralysis. Dicyclomine hydrochloride should be given to patients with myasthenia gravis only to reduce adverse muscarinic effects of an anticholinesterase (5.4)
- Incomplete intestinal obstruction: diarrhea may be an early symptom especially in patients with ileostomy or colostomy. Treatment with dicyclomine hydrochloride would be inappropriate and possibly fatal (5.5)
- Salmonella dysenteric patients: due to risk of toxic megacolon (5.6)
- Ulcerative colitis: Dicyclomine hydrochloride should be used with caution in these patients; large doses may suppress intestinal motility or aggravate the serious complications of toxic megacolon (5.7)
- Prostatic hypertrophy: Dicyclomine hydrochloride should be used with caution in these patients; may lead to urinary retention (5.8)
- Hepatic and renal disease: should be used with caution (5.9)
- Geriatric: use with caution in elderly who may be more susceptible to dicyclomine hydrochloride's adverse events (5.10)

-----**ADVERSE REACTIONS**-----

The most serious adverse reactions include cardiovascular and central nervous system symptoms. The most common adverse reactions (> 5% of patients) are dizziness, dry mouth, vision blurred, nausea, somnolence, asthenia and nervousness (6)

**To report SUSPECTED ADVERSE REACTIONS, contact Upsher-Smith Laboratories, LLC at 1-855-899-9180 or FDA at 1-800-FDA-1088 or [www.fda.gov/medwatch](http://www.fda.gov/medwatch).**

-----**DRUG INTERACTIONS**-----

- Antiglaucoma agents: anticholinergics antagonize antiglaucoma agents and may increase intraocular pressure (7)
- Anticholinergic agents: may affect the gastrointestinal absorption of various drugs; may also increase certain actions or side effects of other anticholinergic drugs (7)
- Antacids: interfere with the absorption of anticholinergic agents (7)

-----**USE IN SPECIFIC POPULATIONS**-----

- Pregnancy: use only if clearly needed (8.1)
- Pediatric Use: Safety and effectiveness not established (8.4)
- Hepatic and renal impairment: caution must be taken with patients with significantly impaired hepatic and renal function (8.6)

**See 17 for PATIENT COUNSELING INFORMATION.**

**Revised: 2/2023**

---

**FULL PRESCRIBING INFORMATION: CONTENTS\***

**1 INDICATIONS AND USAGE**

**2 DOSAGE AND ADMINISTRATION**

2.1 Oral Dosage and Administration in Adults

**3 DOSAGE FORMS AND STRENGTHS**

**4 CONTRAINDICATIONS**

**5 WARNINGS AND PRECAUTIONS**

5.2 Cardiovascular Conditions

5.3 Peripheral and Central Nervous System

5.4 Myasthenia Gravis

5.5 Intestinal Obstruction

5.6 Toxic Dilatation of Intestinemegacolon

5.7 Ulcerative Colitis

5.8 Prostatic Hypertrophy

5.9 Hepatic and Renal Disease

5.10 Geriatric Population

**6 ADVERSE REACTIONS**

6.1 Clinical Trials Experience

6.2 Post-Marketing Experience

6.3 Adverse Reactions Reported with Similar Drugs with Anticholinergic/Antispasmodic Action

**7 DRUG INTERACTIONS**

7.1 Antiglaucoma Agents

7.2 Other Drugs with Anticholinergic Activity

7.3 Other Gastrointestinal Motility Drugs

7.4 Effect of Antacids

7.5 Effect on Absorption of Other Drugs

7.6 Effect on Gastric Acid Secretion

## **8 USE IN SPECIFIC POPULATIONS**

8.1 Pregnancy

8.3 Nursing Mothers

8.4 Pediatric Use

8.5 Geriatric Use

8.6 Renal Impairment

8.7 Hepatic Impairment

## **10 OVERDOSAGE**

## **11 DESCRIPTION**

## **12 CLINICAL PHARMACOLOGY**

12.1 Mechanism of Action

12.2 Pharmacodynamics

12.3 Pharmacokinetics

## **13 NONCLINICAL TOXICOLOGY**

13.1 Carcinogenesis, Mutagenesis, Impairment of Fertility

## **14 CLINICAL STUDIES**

## **16 HOW SUPPLIED/STORAGE AND HANDLING**

## **17 PATIENT COUNSELING INFORMATION**

17.2 Use in Infants

17.3 Use in Nursing Mothers

17.4 Peripheral and Central Nervous System

\* Sections or subsections omitted from the full prescribing information are not listed.

---

## **FULL PRESCRIBING INFORMATION**

### **1 INDICATIONS AND USAGE**

Dicyclomine hydrochloride is indicated for the treatment of patients with functional bowel/irritable bowel syndrome.

### **2 DOSAGE AND ADMINISTRATION**

Dosage must be adjusted to individual patient needs.

#### **2.1 Oral Dosage and Administration in Adults**

The recommended initial dose is 20 mg four times a day.

After one week treatment with the initial dose, the dose may be increased to 40 mg four times a day unless side effects limit dosage escalation.

If efficacy is not achieved within 2 weeks or side effects require doses below 80 mg per day, the drug should be discontinued.

Documented safety data are not available for doses above 80 mg daily for periods longer than 2 weeks.

### **3 DOSAGE FORMS AND STRENGTHS**

Dicyclomine hydrochloride capsules, USP, 10 mg are hard gelatin capsules, filled with white to off-white powder, blue transparent cap and body, and is imprinted with "C30" on the cap and body in white ink.

### **4 CONTRAINDICATIONS**

Dicyclomine hydrochloride is contraindicated in infants less than 6 months of age [see *Use in Specific Populations (8.4)*], nursing mothers [see *Use in Specific Populations (8.3)*], and in patients with:

- unstable cardiovascular status in acute hemorrhage myasthenia gravis [see *Warnings and Precautions (5.4)*]
- glaucoma [see *Adverse Reactions (6.3)* and *Drug Interactions (7.1)*]
- obstructive uropathy [see *Warnings and Precautions (5.8)*]
- obstructive disease of the gastrointestinal tract [see *Warnings and Precautions (5.5)*]
- severe ulcerative colitis [see *Warnings and Precautions (5.7)*]
- reflux esophagitis

### **5 WARNINGS AND PRECAUTIONS**

#### **5.2 Cardiovascular Conditions**

Dicyclomine hydrochloride needs to be used with caution in conditions characterized by tachyarrhythmia such as thyrotoxicosis, congestive heart failure and in cardiac surgery, where they may further accelerate the heart rate. Investigate any tachycardia before administration of dicyclomine hydrochloride. Care is required in patients with coronary heart disease, as ischemia and infarction may be worsened, and in patients with hypertension [see *Adverse Reactions (6.3)*].

#### **5.3 Peripheral and Central Nervous System**

The peripheral effects of dicyclomine hydrochloride are a consequence of their inhibitory effect on muscarinic receptors of the autonomic nervous system. They include dryness of the mouth with difficulty in swallowing and talking, thirst, reduced bronchial secretions, dilatation of the pupils (mydriasis) with loss of accommodation (cycloplegia) and photophobia, flushing and dryness of the skin, transient bradycardia followed by tachycardia, with palpitations and arrhythmias, and difficulty in micturition, as well as reduction in the tone and motility of the gastrointestinal tract leading to constipation [see *Adverse Reactions (6)*].

In the presence of high environmental temperature heat prostration can occur with drug use (fever and heat stroke due to decreased sweating). It should also be used cautiously in patients with fever. If symptoms occur, the drug should be discontinued, and supportive measures instituted. Because of the inhibitory effect on muscarinic receptors within the autonomic nervous system, caution should be taken in patients with autonomic neuropathy. Central nervous system (CNS) signs and symptoms include confusional state, disorientation, amnesia, hallucinations, dysarthria, ataxia, coma, euphoria, fatigue, insomnia, agitation and mannerisms, and inappropriate affect. Psychosis and delirium have been reported in sensitive individuals (such as elderly

patients and/or in patients with mental illness) given anticholinergic drugs. These CNS signs and symptoms usually resolve within 12 to 24 hours after discontinuation of the drug.

Dicyclomine hydrochloride may produce drowsiness, dizziness or blurred vision. The patient should be warned not to engage in activities requiring mental alertness, such as operating a motor vehicle or other machinery or performing hazardous work while taking dicyclomine hydrochloride.

#### **5.4 Myasthenia Gravis**

With overdosage, a curare-like action may occur (i.e., neuromuscular blockade leading to muscular weakness and possible paralysis). It should not be given to patients with myasthenia gravis except to reduce adverse muscarinic effects of an anticholinesterase [see *Contraindications (4)*].

#### **5.5 Intestinal Obstruction**

Diarrhea may be an early symptom of incomplete intestinal obstruction, especially in patients with ileostomy or colostomy. In this instance, treatment with this drug would be inappropriate and possibly harmful [see *Contraindications (4)*].

Rarely development of Ogilvie's syndrome (colonic pseudo-obstruction) has been reported. Ogilvie's syndrome is a clinical disorder with signs, symptoms, and radiographic appearance of an acute large bowel obstruction but with no evidence of distal colonic obstruction.

#### **5.6 Toxic Dilatation of Intestinmegacolon**

Toxic dilatation of intestine and intestinal perforation is possible when anticholinergic agents are administered in patients with Salmonella dysentery.

#### **5.7 Ulcerative Colitis**

Caution should be taken in patients with ulcerative colitis. Large doses may suppress intestinal motility to the point of producing a paralytic ileus and the use of this drug may precipitate or aggravate the serious complication of toxic megacolon [see *Adverse Reactions (6.3)*]. Dicyclomine hydrochloride is contraindicated in patients with severe ulcerative colitis [see *Contraindications (4)*].

#### **5.8 Prostatic Hypertrophy**

Dicyclomine hydrochloride should be used with caution in patients with known or suspected prostatic enlargement, in whom prostatic enlargement may lead to urinary retention [see *Adverse Reactions (6.3)*].

#### **5.9 Hepatic and Renal Disease**

Dicyclomine hydrochloride should be used with caution in patients with known hepatic and renal impairment.

#### **5.10 Geriatric Population**

Dicyclomine hydrochloride should be used with caution in elderly who may be more

susceptible to its adverse effects.

## 6 ADVERSE REACTIONS

The pattern of adverse effects seen with dicyclomine is mostly related to its pharmacological actions at muscarinic receptors [see *Clinical Pharmacology (12)*]. They are a consequence of the inhibitory effect on muscarinic receptors within the autonomic nervous system. These effects are dose-related and are usually reversible when treatment is discontinued.

The most serious adverse reactions reported with dicyclomine hydrochloride include cardiovascular and central nervous system symptoms [see *Warnings and Precautions (5.2, 5.3)*].

### 6.1 Clinical Trials Experience

Because clinical trials are conducted under widely varying conditions, adverse reaction rates observed in the clinical trials of a drug cannot be directly compared to rates in the clinical trials of another drug and may not reflect the rates observed in practice.

The data described below reflect exposure in controlled clinical trials involving over 100 patients treated for functional bowel/irritable bowel syndrome with dicyclomine hydrochloride at initial doses of 160 mg daily (40 mg four times a day).

In these trials most of the side effects were typically anticholinergic in nature and were reported by 61% of the patients. Table 1 presents adverse reactions (*MedDRA 13.0* preferred terms) by decreasing order of frequency in a side-by-side comparison with placebo.

**Table 1: Adverse reactions experienced in controlled clinical trials with decreasing order of frequency**

<b>MedDRA Preferred Term</b>	<b>Dicyclomine Hydrochloride (40 mg four times a day)</b>	<b>Placebo</b>
	<b>%</b>	<b>%</b>
Dry Mouth	33	5
Dizziness	40	5
Vision blurred	27	2
Nausea	14	6
Somnolence	9	1
Asthenia	7	1
Nervousness	6	2

Nine percent (9%) of patients were discontinued from dicyclomine hydrochloride because of one or more of these side effects (compared with 2% in the placebo group). In 41% of the patients with side effects, side effects disappeared or were tolerated at the 160 mg daily dose without reduction. A dose reduction from 160 mg daily to an average daily dose of 90 mg was required in 46% of the patients with side effects who

then continued to experience a favorable clinical response; their side effects either disappeared or were tolerated.

## 6.2 Post-Marketing Experience

The following adverse reactions, presented by system organ class in alphabetical order, have been identified during post approval use of dicyclomine hydrochloride. Because these reactions are reported voluntarily from a population of uncertain size, it is not always possible to reliably estimate their frequency or establish a causal relationship to drug exposure.

- *Cardiac disorders:* palpitations, tachyarrhythmias
- *Eye disorders:* cycloplegia, mydriasis, vision blurred
- *Gastrointestinal disorders:* abdominal distension, abdominal pain, constipation, dry mouth, dyspepsia, nausea, vomiting
- *General disorders and administration site conditions:* fatigue, malaise
- *Immune System Disorders:* drug hypersensitivity including face edema, angioedema, anaphylactic shock
- *Nervous system disorders:* dizziness, headache, somnolence, syncope
- *Psychiatric disorders:* As with the other anti-cholinergic drugs, cases of delirium or symptoms of delirium such as amnesia (or transient global amnesia), agitation, confusional state, delusion, disorientation, hallucination (including visual hallucination) as well as mania, mood altered and pseudodementia, have been reported with the use of dicyclomine. Nervousness and insomnia have also been reported.
- *Reproductive system and breast disorders:* suppressed lactation
- *Respiratory, thoracic and mediastinal disorders:* dyspnoea, nasal congestion
- *Skin and subcutaneous tissue disorders:* dermatitis allergic, erythema, rash

## 6.3 Adverse Reactions Reported with Similar Drugs with Anticholinergic/Antispasmodic Action

- Gastrointestinal: anorexia
- Central Nervous System: tingling, numbness, dyskinesia, speech disturbance, insomnia
- Peripheral Nervous System: With overdosage, a curare-like action may occur (i.e., neuromuscular blockade leading to muscular weakness and possible paralysis)
- Ophthalmologic: diplopia, increased ocular tension
- Dermatologic/Allergic: urticaria, itching, and other dermal manifestations
- Genitourinary: urinary hesitancy, urinary retention in patients with prostatic hypertrophy
- Cardiovascular: hypertension
- Respiratory: apnea
- Other: decreased sweating, sneezing, throat congestion, impotence

## 7 DRUG INTERACTIONS

### 7.1 Antiglaucoma Agents

Anticholinergics antagonize the effects of antiglaucoma agents. Anticholinergic drugs in the presence of increased intraocular pressure may be hazardous when taken concurrently with agents such as corticosteroids. Use of dicyclomine hydrochloride in

patients with glaucoma is not recommended [see *Contraindications (4)*].

## **7.2 Other Drugs with Anticholinergic Activity**

The following agents may increase certain actions or side effects of anticholinergic drugs including dicyclomine hydrochloride: amantadine, antiarrhythmic agents of Class I (e.g., quinidine), antihistamines, antipsychotic agents (e.g., phenothiazines), benzodiazepines, MAO inhibitors, narcotic analgesics (e.g., meperidine), nitrates and nitrites, sympathomimetic agents, tricyclic antidepressants, and other drugs having anticholinergic activity.

## **7.3 Other Gastrointestinal Motility Drugs**

Interaction with other gastrointestinal motility drugs may antagonize the effects of drugs that alter gastrointestinal motility, such as metoclopramide.

## **7.4 Effect of Antacids**

Because antacids may interfere with the absorption of anticholinergic agents including dicyclomine hydrochloride, simultaneous use of these drugs should be avoided.

## **7.5 Effect on Absorption of Other Drugs**

Anticholinergic agents may affect gastrointestinal absorption of various drugs by affecting on gastrointestinal motility, such as slowly dissolving dosage forms of digoxin; increased serum digoxin concentration may result.

## **7.6 Effect on Gastric Acid Secretion**

The inhibiting effects of anticholinergic drugs on gastric hydrochloric acid secretion are antagonized by agents used to treat achlorhydria and those used to test gastric secretion.

# **8 USE IN SPECIFIC POPULATIONS**

## **8.1 Pregnancy**

Adequate and well-controlled studies have not been conducted with dicyclomine hydrochloride in pregnant women at the recommended doses of 80 to 160 mg/day. However, epidemiologic studies did not show an increased risk of structural malformations among babies born to women who took products containing dicyclomine hydrochloride at doses up to 40 mg/day during the first trimester of pregnancy. Reproduction studies have been performed in rats and rabbits at doses up to 33 times the maximum recommended human dose based on 160 mg/day (3 mg/kg) and have revealed no evidence of harm to the fetus due to dicyclomine. Because animal reproduction studies are not always predictive of human response, this drug should be used during pregnancy only if clearly needed.

## **8.3 Nursing Mothers**

Dicyclomine hydrochloride is contraindicated in women who are breastfeeding. Dicyclomine hydrochloride is excreted in human milk. Because of the potential for



serious adverse reactions in breast-fed infants from dicyclomine hydrochloride, a decision should be made whether to discontinue nursing or to discontinue the drug, taking into account the importance of the drug to the mother [*see Use in Specific Populations (8.4)*].

#### **8.4 Pediatric Use**

Safety and effectiveness in pediatric patients have not been established.

Dicyclomine hydrochloride is contraindicated in infants less than 6 months of age [*see Contraindications (4)*]. There are published cases reporting that the administration of dicyclomine hydrochloride to infants has been followed by serious respiratory symptoms (dyspnea, shortness of breath, breathlessness, respiratory collapse, apnea, and asphyxia), seizures, syncope, pulse rate fluctuations, muscular hypotonia, and coma, and death, however; no causal relationship has been established.

#### **8.5 Geriatric Use**

Clinical studies of dicyclomine hydrochloride did not include sufficient numbers of subjects aged 65 and over to determine whether they respond differently from younger subjects. Other reported clinical experience has not identified differences in responses between the elderly and younger patients. In general, dose selection for an elderly patient should be cautious, usually starting at the low end of the dosing range in adults, reflecting the greater frequency of decreased hepatic, renal, or cardiac function, and of concomitant disease or other drug therapy.

Because elderly patients are more likely to have decreased renal function, care should be taken in dose selection, and it may be useful to monitor renal function.

#### **8.6 Renal Impairment**

Effects of renal impairment on PK, safety, and efficacy of dicyclomine hydrochloride have not been studied. Dicyclomine hydrochloride drug is known to be substantially excreted by the kidney, and the risk of toxic reactions to this drug may be greater in patients with impaired renal function. Dicyclomine hydrochloride should be administered with caution in patients with renal impairment.

#### **8.7 Hepatic Impairment**

Effects of renal impairment on PK, safety, and efficacy of dicyclomine hydrochloride have not been studied. Dicyclomine hydrochloride should be administered with caution in patients with hepatic impairment.

### **10 OVERDOSAGE**

In case of an overdose, patients should contact a physician, poison control center (1-800-222-1222), or emergency room.

The signs and symptoms of overdose include: headache; nausea; vomiting; blurred vision; dilated pupils; hot, dry skin; dizziness; dryness of the mouth; difficulty in swallowing; and CNS stimulation including convulsion. A curare-like action may occur (i.e., neuromuscular blockade leading to muscular weakness and possible paralysis).

One reported event included a 37-year-old who reported numbness on the left side, cold fingertips, blurred vision, abdominal and flank pain, decreased appetite, dry mouth, and nervousness following ingestion of 320 mg daily (four 20 mg tablets four times daily). These events resolved after discontinuing the dicyclomine.

The acute oral LD<sub>50</sub> of the drug is 625 mg/kg in mice.

The amount of drug in a single dose that is ordinarily associated with symptoms of overdose or that is likely to be life-threatening, has not been defined. The maximum human oral dose recorded was 600 mg by mouth in a 10-month-old child and approximately 1,500 mg in an adult, each of whom survived. In three of the infants who died following administration of dicyclomine hydrochloride, the blood concentrations of drug were 200, 220, and 505 ng/mL.

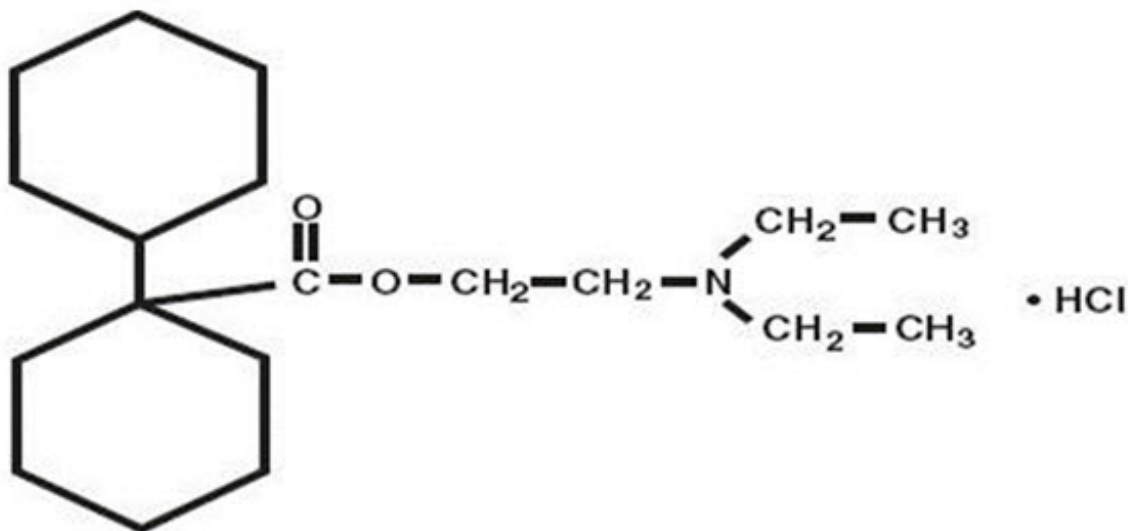
It is not known if dicyclomine hydrochloride is dialyzable.

Treatment should consist of gastric lavage, emetics, and activated charcoal. Sedatives (e.g., short-acting barbiturates, benzodiazepines) may be used for management of overt signs of excitement. If indicated, an appropriate parenteral cholinergic agent may be used as an antidote.

## 11 DESCRIPTION

Dicyclomine hydrochloride, USP is an antispasmodic and anticholinergic (antimuscarinic) agent available in the following dosage form:

Dicyclomine hydrochloride, USP is [bicyclohexyl]-1-carboxylic acid, 2-(diethylamino) ethyl ester, hydrochloride, with a molecular formula of C<sub>19</sub>H<sub>35</sub>NO<sub>2</sub>•HCl and the following structural formula:



**Molecular weight: 345.95**

Dicyclomine hydrochloride, USP occurs as a fine, white, crystalline, practically odorless powder with a bitter taste. It is soluble in water, freely soluble in alcohol and chloroform, and very slightly soluble in ether.

Dicyclomine hydrochloride capsules, USP for oral use contain 10 mg of dicyclomine hydrochloride, USP. In addition, each capsule contains the following inactive ingredients: anhydrous lactose, FD&C Blue No. 1, FD&C Red No. 3, gelatin, magnesium stearate, microcrystalline cellulose and pregelatinized starch.

## 12 CLINICAL PHARMACOLOGY

### 12.1 Mechanism of Action

Dicyclomine relieves smooth muscle spasm of the gastrointestinal tract. Animal studies indicate that this action is achieved via a dual mechanism:

- a specific anticholinergic effect (antimuscarinic) at the acetylcholine-receptor sites with approximately  $\frac{1}{8}$  the milligram potency of atropine (*in vitro*, guinea pig ileum); and
- a direct effect upon smooth muscle (musculotropic) as evidenced by dicyclomine's antagonism of bradykinin- and histamine-induced spasms of the isolated guinea pig ileum.

Atropine did not affect responses to these two agonists. *In vivo* studies in cats and dogs showed dicyclomine to be equally potent against acetylcholine (ACh)- or barium chloride (BaCl<sub>2</sub>)-induced intestinal spasm while atropine was at least 200 times more potent against effects of ACh than BaCl<sub>2</sub>. Tests for mydriatic effects in mice showed that dicyclomine was approximately  $\frac{1}{500}$  as potent as atropine; antisialagogue tests in rabbits showed dicyclomine to be  $\frac{1}{300}$  as potent as atropine.

### 12.2 Pharmacodynamics

Dicyclomine hydrochloride can inhibit the secretion of saliva and sweat, decrease gastrointestinal secretions and motility, cause drowsiness, dilate the pupils, increase heart rate, and depress motor function.

### 12.3 Pharmacokinetics

#### Absorption and Distribution

In man, dicyclomine is rapidly absorbed after oral administration, reaching peak values within 60 to 90 minutes. Mean volume of distribution for a 20 mg oral dose is approximately 3.65 L/kg suggesting extensive distribution in tissues.

#### Elimination

The metabolism of dicyclomine was not studied. The principal route of excretion is via the urine (79.5% of the dose). Excretion also occurs in the feces, but to a lesser extent (8.4%). Mean half-life of plasma elimination in one study was determined to be approximately 1.8 hours when plasma concentrations were measured for 9 hours after a single dose. In subsequent studies, plasma concentrations were followed for up to 24 hours after a single dose, showing a secondary phase of elimination with a somewhat longer half-life.

## 13 NONCLINICAL TOXICOLOGY

### **13.1 Carcinogenesis, Mutagenesis, Impairment of Fertility**

Long-term animal studies have not been conducted to evaluate the carcinogenic potential of dicyclomine. In studies in rats at doses of up to 100 mg/kg/day, dicyclomine produced no deleterious effects on breeding, conception, or parturition.

## **14 CLINICAL STUDIES**

In controlled clinical trials involving over 100 patients who received drug, 82% of patients treated for functional bowel/irritable bowel syndrome with dicyclomine hydrochloride at initial doses of 160 mg daily (40 mg four times daily) demonstrated a favorable clinical response compared with 55% treated with placebo ( $p < 0.05$ ).

## **16 HOW SUPPLIED/STORAGE AND HANDLING**

Dicyclomine hydrochloride capsules, USP 10 mg are hard gelatin capsules, filled with white to off-white powder. The capsule has a blue transparent cap and body, and is imprinted with "C30" on the cap and body in white ink. They are supplied as follows:

Bottles of 100 with a child-resistant closure, NDC 0832-6053-11

Bottles of 1000 with a child-resistant closure, NDC 0832-6053-10

Store at 20° to 25°C (68° to 77°F) [See USP Controlled Room Temperature]. Protect from light and moisture.

Dispense in a tight, light-resistant container as defined in the USP with a child-resistant closure.

## **17 PATIENT COUNSELING INFORMATION**

### **17.2 Use in Infants**

Inform parents and caregivers not to administer dicyclomine hydrochloride in infants less than 6 months of age [see *Use in Specific Populations* (8.4)].

### **17.3 Use in Nursing Mothers**

Advise lactating women that dicyclomine hydrochloride should not be used while breastfeeding their infants [see *Use in Specific Populations* (8.3, 8.4)].

### **17.4 Peripheral and Central Nervous System**

In the presence of a high environmental temperature, heat prostration can occur with dicyclomine hydrochloride use (fever and heat stroke due to decreased sweating). If symptoms occur, the drug should be discontinued, and a physician contacted. Dicyclomine hydrochloride may produce drowsiness or blurred vision. The patient should be warned not to engage in activities requiring mental alertness, such as operating a motor vehicle or other machinery or to perform hazardous work while taking dicyclomine hydrochloride [see *Warnings and Precautions* (5.3)].

Manufactured for

# UPSHER-SMITH LABORATORIES, LLC

Maple Grove, MN 55369

Revised: 2/2023

## PRINCIPAL DISPLAY PANEL - 10 mg Capsule Bottle Label

NDC 0832-6053-11

Dicyclomine  
Hydrochloride  
Capsules, USP

10 mg

100 Capsules

Rx only

UPSHER-SMITH

**NDC 0832-6053-11**  
**Dicyclomine Hydrochloride Capsules, USP**

**10 mg**

**100 Capsules**      Rx only

**UPSHER-SMITH**

**Each capsule contains:** Dicyclomine hydrochloride, USP 10 mg  
**Usual Dosage:** See package insert for prescribing information.  
Dispense in a tight, light-resistant container as defined in the USP with a child-resistant closure.  
**Storage:** This package is child-resistant. Store at 20° to 25°C (68° to 77°F) [See USP Controlled Room Temperature]. Protect from light and moisture.  
**Keep out of reach of children.**  
Manufactured for  
**UPSHER-SMITH LABORATORIES, LLC**  
Maple Grove, MN 55369  
© 2023 Upsher-Smith Laboratories, LLC  
40214 Rev. 2/2023

**N 3** 0832-6053-11 **4**

## DICYCLOMINE HYDROCHLORIDE

dicyclomine hydrochloride capsule

### Product Information

<b>Product Type</b>	HUMAN PRESCRIPTION DRUG	<b>Item Code (Source)</b>	NDC:0832-6053
<b>Route of Administration</b>	ORAL		

### Active Ingredient/Active Moiety

Ingredient Name	Basis of Strength	Strength
<b>Dicyclomine hydrochloride</b> (UNII: CQ903KQA31) (Dicyclomine - UNII: 4KV4X8IF6V)	Dicyclomine hydrochloride	10 mg

## Inactive Ingredients

Ingredient Name	Strength
Anhydrous Lactose (UNII: 3SY5LH9PMK)	
FD&C Blue No. 1 (UNII: H3R47K3TBD)	
FD&C Red No. 3 (UNII: PN2ZH5LOQY)	
GELATIN, UNSPECIFIED (UNII: 2G86QN327L)	
Magnesium Stearate (UNII: 70097M6I30)	
Microcrystalline Cellulose (UNII: OP1R32D61U)	
STARCH, CORN (UNII: O8232NY3SJ)	

## Product Characteristics

Color	BLUE (Transparent body and cap)	Score	no score
Shape	CAPSULE	Size	14mm
Flavor		Imprint Code	C30
Contains			

## Packaging

#	Item Code	Package Description	Marketing Start Date	Marketing End Date
1	NDC:0832-6053-11	100 in 1 BOTTLE; Type 0: Not a Combination Product	04/13/2023	
2	NDC:0832-6053-10	1000 in 1 BOTTLE; Type 0: Not a Combination Product	04/13/2023	

## Marketing Information

Marketing Category	Application Number or Monograph Citation	Marketing Start Date	Marketing End Date
ANDA	ANDA216639	03/24/2023	

**Labeler** - Upsher-Smith Laboratories, LLC (047251004)

Revised: 4/2023

Upsher-Smith Laboratories, LLC