

BREXAFEMME- ibrexafungerp tablet, film coated

SCYNEXIS, INC.

HIGHLIGHTS OF PRESCRIBING INFORMATION

These highlights do not include all the information needed to use BREXAFEMME® safely and effectively. See full prescribing information for BREXAFEMME®.

BREXAFEMME® (ibrexafungerp tablets), for oral use

Initial U.S. Approval: 2021

INDICATIONS AND USAGE

BREXAFEMME is a triterpenoid antifungal indicated for the treatment of adult and post-menarchal pediatric females with vulvovaginal candidiasis (VVC). (1)

DOSAGE AND ADMINISTRATION

- The recommended dosage of BREXAFEMME in adult and post-menarchal pediatric females is 300 mg (two tablets of 150 mg) twice a day for one day, for a total treatment dosage of 600 mg. (2.1)
- BREXAFEMME may be taken with or without food. (2.1)
- Prior to initiating treatment, verify pregnancy status in females of reproductive potential. (2.3)

DOSAGE FORMS AND STRENGTHS

Tablets: 150 mg of ibrexafungerp (3)

CONTRAINDICATIONS

- Pregnancy (4)
- Hypersensitivity to ibrexafungerp. (4)

WARNINGS AND PRECAUTIONS

Risk of Fetal Toxicity: May cause fetal harm based on animal studies. Advise females of reproductive potential to use effective contraception during treatment. (2.3, 5.1, 8.1, 8.3)

ADVERSE REACTIONS

The most frequent adverse reactions ($\geq 2\%$) reported with BREXAFEMME in clinical trials of vulvovaginal candidiasis treatment were diarrhea, nausea, abdominal pain, dizziness, and vomiting. (6.1)

To report SUSPECTED ADVERSE REACTIONS, contact SCYNEXIS, Inc. at 1-888-982-7299 or FDA at 1-800-FDA-1088 or www.fda.gov/medwatch.

DRUG INTERACTIONS

- Concomitant use of strong CYP3A inhibitors increases the exposure of ibrexafungerp. Reduce BREXAFEMME dose with concomitant use of a strong CYP3A inhibitor to 150 mg twice daily for one day. (2.2, 7)
- Concomitant use of strong and moderate CYP3A inducers may significantly reduce the exposure of ibrexafungerp. Avoid concomitant administration of BREXAFEMME with strong or moderate CYP3A inducers. (7)

See 17 for PATIENT COUNSELING INFORMATION and FDA-approved patient labeling.

Revised: 6/2021

FULL PRESCRIBING INFORMATION: CONTENTS*

1 INDICATIONS AND USAGE

1.1 Vulvovaginal Candidiasis

- 1.2 Usage
 - 2 DOSAGE AND ADMINISTRATION**
 - 2.1 Recommended Dosage
 - 2.2 Dosage Modifications in Patients due to Concomitant Use of a Strong Inhibitor of Cytochrome P450 Isoenzymes (CYP) 3A
 - 2.3 Pregnancy Evaluation Prior to Initiating Treatment
 - 3 DOSAGE FORMS AND STRENGTHS**
 - 4 CONTRAINDICATIONS**
 - 5 WARNINGS AND PRECAUTIONS**
 - 5.1 Risk of Fetal Toxicity
 - 6 ADVERSE REACTIONS**
 - 6.1 Clinical Trials
 - 7 DRUG INTERACTIONS**
 - 8 USE IN SPECIFIC POPULATIONS**
 - 8.1 Pregnancy
 - 8.2 Lactation
 - 8.3 Females and Males of Reproductive Potential
 - 8.4 Pediatric Use
 - 8.5 Geriatric Use
 - 10 OVERDOSAGE**
 - 11 DESCRIPTION**
 - 12 CLINICAL PHARMACOLOGY**
 - 12.1 Mechanism of Action
 - 12.2 Pharmacodynamics
 - 12.3 Pharmacokinetics
 - 12.4 Microbiology
 - 13 NONCLINICAL TOXICOLOGY**
 - 13.1 Carcinogenesis, Mutagenesis, Impairment of Fertility
 - 14 CLINICAL STUDIES**
 - 16 HOW SUPPLIED / STORAGE AND HANDLING**
 - 16.1 How Supplied
 - 16.2 Storage and Handling
 - 17 PATIENT COUNSELING INFORMATION**
- * Sections or subsections omitted from the full prescribing information are not listed.

FULL PRESCRIBING INFORMATION

1 INDICATIONS AND USAGE

1.1 Vulvovaginal Candidiasis

BREXAFEMME[®] is indicated for the treatment of adult and post-menarchal pediatric females with vulvovaginal candidiasis (VVC).

1.2 Usage

If specimens for fungal culture are obtained prior to therapy, antifungal therapy may be

instituted before the results of the cultures are known. However, once these results become available, antifungal therapy should be adjusted accordingly.

2 DOSAGE AND ADMINISTRATION

2.1 Recommended Dosage

The recommended dosage of BREXAFEMME in adult and post-menarchal pediatric females is 300 mg (two 150 mg tablets) administered approximately 12 hours apart (e.g., in the morning and in the evening) for one day, for a total daily dosage of 600 mg (four 150 mg tablets).

BREXAFEMME may be taken with or without food.

2.2 Dosage Modifications in Patients due to Concomitant Use of a Strong Inhibitor of Cytochrome P450 Isoenzymes (CYP) 3A

With concomitant use of a strong CYP3A inhibitor, administer BREXAFEMME 150 mg approximately 12 hours apart (e.g., in the morning and in the evening) for one day. No dosage adjustment is warranted in patients with concomitant use of a weak or moderate CYP3A inhibitor [see *Drug Interactions (7) and Clinical Pharmacology (12.3)*].

2.3 Pregnancy Evaluation Prior to Initiating Treatment

Verify the pregnancy status in females of reproductive potential prior to initiating treatment with BREXAFEMME [see *Contraindications (4), Warning and Precautions (5.1) and Use in Specific Populations (8.1, 8.3)*].

3 DOSAGE FORMS AND STRENGTHS

BREXAFEMME tablets are purple, oval, biconvex shaped tablets debossed with 150 on one side and SCYX on the other side containing 150 mg of ibrexafungerp.

4 CONTRAINDICATIONS

BREXAFEMME is contraindicated in:

- Pregnancy [see *Warnings and Precautions (5.1), and Use in Specific Populations (8.1, 8.3)*]
- Patients with hypersensitivity to ibrexafungerp

5 WARNINGS AND PRECAUTIONS

5.1 Risk of Fetal Toxicity

Based on findings from animal studies, BREXAFEMME use is contraindicated in pregnancy because it may cause fetal harm. In animal reproduction studies, ibrexafungerp administered orally to pregnant rabbits during organogenesis was associated with fetal malformations including absent forelimb(s), absent hindpaw, absent ear pinna, and thoracogastroschisis at dose exposures greater or equal to approximately 5 times the human exposure at the recommended human dose (RHD).

Prior to initiating treatment with BREXAFEMME, verify the pregnancy status in females of reproductive potential. Advise females of reproductive potential to use effective contraception during treatment with BREXAFEMME and for 4 days after the last dose [see Use in Specific Populations (8.1, 8.3)].

6 ADVERSE REACTIONS

6.1 Clinical Trials

Because clinical trials are conducted under widely varying conditions, adverse reaction rates observed in clinical trials of a drug cannot be directly compared to rates in the clinical trials of another drug and may not reflect the rates observed in practice.

A total of 545 patients were exposed to BREXAFEMME in two clinical trials of women with VVC (Trial 1 and Trial 2). The women were treated with BREXAFEMME 300 mg (two 150 mg tablets) twice a day, 12 hours apart, for one day. The women were 18 to 76 years of age (mean 34 years); 69% were White and 28% were Black or African American; 18% were of Hispanic or Latina ethnicity.

The most frequently reported adverse reactions are presented in Table 1.

There were no serious adverse reactions and 2 out of 545 (0.4%) patients discontinued treatment with BREXAFEMME due to vomiting (1 patient) and dizziness (1 patient).

Table 1. Adverse Reactions with Rates \geq 2% in BREXAFEMME-Treated Patients

Adverse Reaction	BREXAFEMME N = 545 n (%)	Placebo N = 275 n (%)
Diarrhea	91 (16.7%)	9 (3.3%)
Nausea	65 (11.9%)	11 (4.0%)
Abdominal pain ¹	62 (11.4%)	14 (5.1%)
Dizziness ²	18 (3.3%)	7 (2.5%)
Vomiting	11 (2.0%)	2 (0.7%)

¹ Includes abdominal pain, abdominal pain upper, abdominal pain lower, and abdominal discomfort

² Includes dizziness and postural dizziness

Other Adverse Reactions

The following adverse reactions occurred in < 2% of patients receiving BREXAFEMME in Trial 1 and Trial 2: dysmenorrhea, flatulence, back pain, elevated transaminases, vaginal bleeding, rash/hypersensitivity reaction.

7 DRUG INTERACTIONS

Ibexafungerp is a substrate of CYP3A4. Drugs that inhibit or induce CYP3A may alter the plasma concentrations of ibexafungerp and affect the safety and efficacy of

BREXAFEMME [see *Clinical Pharmacology (12.3)*]

Table 2 Effect of Coadministered Drugs on Ibrexafungerp Pharmacokinetics:

Concomitant Drugs	Effect on Ibrexafungerp Concentration	Recommendation
Strong CYP3A inhibitors: (e.g., ketoconazole, itraconazole)	Significantly increased	Reduce the BREXAFEMME dosage [see <i>Dosage and Administration (2.2)</i>]
Strong and Moderate CYP3A inducers: (e.g., rifampin, carbamazepine, phenytoin, St. John's wort, long acting barbiturates, bosentan, efavirenz, or etravirine)	Not studied in vivo or in vitro, but likely to result in significant reduction	Avoid concomitant administration

Ibrexafungerp is an inhibitor of CYP3A4, P-gp and OATP1B3 transporter [(see *Clinical Pharmacology (12.3)*)]. However, given the short treatment duration for VVC, the effect of BREXAFEMME on the pharmacokinetics of substrates of CYP3A4, P-gp and OATP1B3 transporters is not considered to be clinically significant.

8 USE IN SPECIFIC POPULATIONS

8.1 Pregnancy

Risk Summary

Based on findings from animal studies, BREXAFEMME use is contraindicated in pregnancy because it may cause fetal harm. In pregnant rabbits, oral ibrexafungerp administered during organogenesis was associated with rare malformations including absent forelimb(s), absent hindpaw, absent ear pinna, and thoracogastroschisis at dose exposures greater or equal to approximately 5 times the human exposure at the RHD. Oral ibrexafungerp administered to pregnant rats during organogenesis was not associated with fetal toxicity or increased fetal malformations at a dose exposure approximately 5 times the human exposure at the RHD (see *Data*). Available data on BREXAFEMME use in pregnant women are insufficient to draw conclusions about any drug-associated risks of major birth defects, miscarriage, or other adverse maternal or fetal outcomes.

There is a pregnancy safety study for BREXAFEMME. If BREXAFEMME is inadvertently administered during pregnancy or if pregnancy is detected within 4 days after a patient receives BREXAFEMME, pregnant women exposed to BREXAFEMME and healthcare providers should report pregnancies to SCYNEXIS, Inc. at 1-888-982-SCYX (7299).

Data

Animal Data

In a rat embryo-fetal study, ibrexafungerp was administered to pregnant rats by oral gavage from gestation days (GDs) 6 through 17 at doses of 10, 20, 35, and 50 mg/kg/day. No fetal malformations or changes in embryo-fetal survival or fetal body weights occurred with any of the doses of ibrexafungerp up to the high-dose of 50 mg/kg/day (approximately 5 times the RHD based on plasma AUC comparison).

In an embryo-fetal study in rabbits, ibrexafungerp was administered by oral gavage at doses of 10, 25, and 50 mg/kg/day from GD 7 through GD 19. In the mid-dose group administered 25 mg/kg/day (approximately 5 times the RHD based on AUC comparison), fetal malformations, including absent ear pinna, craniorachischisis, thoracogastroschisis, trunk kyphosis, absent forelimbs, absent forepaws, and absent hindpaw occurred in a single fetus. Malformations including absent hindpaw and anencephaly occurred with an increased litter incidence in the high-dose group of 50 mg/kg/day (approximately 13 times the RHD based on AUC comparison), and other malformations occurred in single fetuses and litters including absent ear pinna, thoracogastroschisis, absent forelimb, and absent thyroid gland. No changes in embryo-fetal survival or fetal body weights were observed with any of the ibrexafungerp doses, and fetal malformations were not observed with the 10 mg/kg/day dose of ibrexafungerp (approximately 2 times the RHD based on AUC comparison).

In a pre-postnatal study in rats, ibrexafungerp was administered by oral gavage from GD 6 through the lactation period until lactation day 20 in maternal doses of 10, 20, 35, and 50 mg/kg/day. No maternal toxicity or adverse effects on the survival, growth, behavior, or reproduction of first-generation offspring occurred with any of the ibrexafungerp doses up to the high dose of 50 mg/kg/day (approximately 5 times the RHD based on AUC comparison).

8.2 Lactation

Risk Summary

There are no data on the presence of ibrexafungerp in either human or animal milk, the effects on the breast-fed infant, or the effects on milk production.

The developmental and health benefits of breastfeeding should be considered along with the mother's clinical need for BREXAFEMME and any potential adverse effects on the breastfed child from BREXAFEMME or from the underlying maternal condition.

8.3 Females and Males of Reproductive Potential

Based on animal data, BREXAFEMME may cause fetal harm when administered to a pregnant female [see *Use in Specific Populations (8.1)*].

Pregnancy Testing

Verify the pregnancy status in females of reproductive potential prior to initiating treatment with BREXAFEMME [see *Dosage and Administration (2.3)*, *Contraindications (4)* and *Use in Specific Populations (8.1)*].

Contraception

Females

Advise females of reproductive potential to use effective contraception during treatment

with BREXAFEMME and for 4 days after the last dose.

8.4 Pediatric Use

The safety and effectiveness of BREXAFEMME for treatment of VVC have been established in post-menarchal pediatric females. Use of BREXAFEMME in post-menarchal pediatric patients is supported by evidence from adequate and well-controlled studies of BREXAFEMME in adult non-pregnant women with additional safety data from post-menarchal pediatric females [see *Adverse Reactions (6.1) and Clinical Studies (14.1)*].

The safety and effectiveness of BREXAFEMME have not been established in pre-menarchal pediatric females.

8.5 Geriatric Use

Clinical studies with ibrexafungerp did not include sufficient numbers of subjects aged 65 and older to determine whether they respond differently from younger subjects. No clinically meaningful differences in the pharmacokinetics of ibrexafungerp were observed in geriatric patients compared to younger adults [see *Clinical Pharmacology (12.3)*].

10 OVERDOSAGE

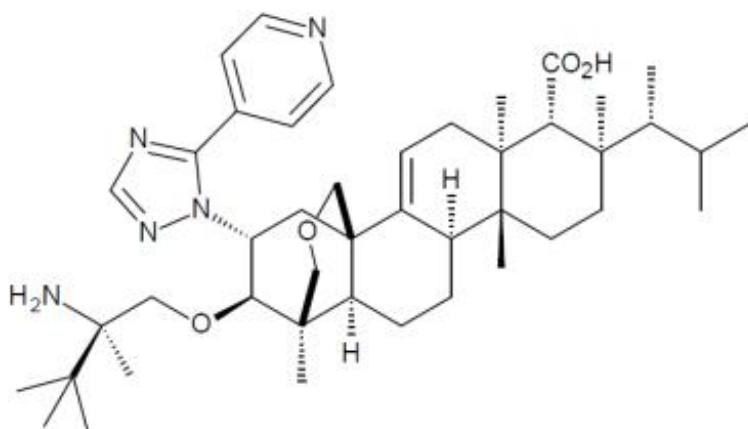
There is no experience with overdosage of BREXAFEMME.

There is no specific antidote for ibrexafungerp. Treatment should be supportive with appropriate monitoring.

11 DESCRIPTION

BREXAFEMME, available as an oral tablet, contains ibrexafungerp citrate, a triterpenoid antifungal agent.

Ibrexafungerp is designated chemically as (1S,4aR,6aS,7R,8R,10aR,10bR,12aR,14R,15R)-15-[(2R)-2-amino-2,3,3-trimethylbutoxy]-1,6a,8,10a-tetramethyl-8-[(2R)-3-methylbutan-2-yl]-14-[5-(pyridine-4-yl)-1H-1,2,4-triazol-1-yl]-1,6,6a,7,8,9,10,10a,10b,11,12,12a-dodecahydro-2H,4H-1,4a-propanophenanthro[1,2-c]pyran-7-carboxylic acid compound with 2-hydroxypropane-1,2,3-tricarboxylic acid (1:1) with an empirical formula of $C_{44}H_{67}N_5O_4 \cdot C_6H_8O_7$ and a molecular weight of 922.18 grams per mole. The chemical structure is:



• C₆H₈O₇

BREXAFEMME tablet for oral administration is a purple, oval, biconvex shaped, film-coated tablet containing 189.5 mg of ibrexafungerp citrate equivalent to 150 mg of ibrexafungerp. In addition to the active ingredient, the tablet formulation contains butylated hydroxyanisole, colloidal silicon dioxide, crospovidone, magnesium stearate, mannitol, and microcrystalline cellulose. The tablet film-coating contains FD&C Blue #2, FD&C Red #40, hydroxypropyl cellulose, hydroxypropylmethyl cellulose 2910, talc and titanium dioxide.

12 CLINICAL PHARMACOLOGY

12.1 Mechanism of Action

Ibrexafungerp is a triterpenoid antifungal drug [see *Microbiology (12.4)*].

12.2 Pharmacodynamics

Ibrexafungerp exposure-response relationships and the time course of pharmacodynamic response are unknown.

Cardiac Electrophysiology

At a concentration of 5 times or greater than that achieved after a single day 300 mg twice daily dose, ibrexafungerp does not prolong the QTc interval to any clinically relevant extent.

12.3 Pharmacokinetics

In healthy subjects, ibrexafungerp area under the curve (AUC) and maximal concentration (C_{max}) increased approximately dose-proportionally following single dose administration from 10 to 1600 mg (0.02 to 2.67 times the approved recommended daily dose) and multiple-dose administration from 300-800 mg (0.50 to 1.33 times the approved recommended daily dose).

Based on a population pharmacokinetic analysis in patients with VVC, the model predicts that 300 mg twice a day for 2 doses achieves a mean (%CV) AUC₀₋₂₄ exposure of 6832 (15%) ng•hr/mL and C_{max} of 435 (15%) ng/mL under fasted conditions and a mean AUC₀₋₂₄ exposure of 9867 (15%) ng•h/mL and C_{max} of 629 (15%) ng/mL under fed conditions.

Absorption

After oral administration of BREXAFEMME in healthy volunteers, ibrexafungerp generally reaches maximum plasma concentrations 4 to 6 hours after single and multiple dosing.

Effect of Food

Following administration of BREXAFEMME to healthy volunteers, the ibrexafungerp C_{max} increased 32% and the AUC increased 38% with a high fat meal (800-1000 calories; 50% fat), compared to fasted conditions. This exposure change is not considered clinically significant [see *Dosage and Administration (2.1)*].

Distribution

The mean steady state volume of distribution (V_{ss}) of ibrexafungerp is approximately 600 L. Ibrexafungerp is highly protein bound (greater than 99%), predominantly to albumin. Animal studies demonstrate a 9-fold higher exposure in vaginal tissue than in blood.

Elimination

Ibrexafungerp is eliminated mainly via metabolism and biliary excretion. The elimination half-life is approximately 20 hours.

Metabolism

In vitro studies show that ibrexafungerp undergoes hydroxylation by CYP3A4, followed by glucuronidation and sulfation of a hydroxylated inactive metabolite.

Excretion

Following oral administration of radio-labeled ibrexafungerp to healthy volunteers, a mean of 90% of the radioactive dose (51% as unchanged ibrexafungerp) was recovered in feces and 1% was recovered in urine.

Specific Populations

Geriatric Patients

A comparison of elderly healthy males and females (range of 65 to 76 years) with young healthy males (range of 20 to 45 years) showed that the geometric means ratio (GMR) of pooled elderly males and females / young males for the $AUC_{0-\infty}$ (90% CI) was 1.39 (1.19, 1.62). Dose adjustment for age is not required.

Drug Interaction Studies

Ibrexafungerp is a substrate of CYP3A4 and P-gp. In vitro, ibrexafungerp is an inhibitor of CYP2C8, CYP3A4, P-gp transporter, and OATP1B3 transporter. Ibrexafungerp is not an inducer of CYP3A4.

The effect of coadministration of drugs on the pharmacokinetics of ibrexafungerp and the effect of ibrexafungerp on the pharmacokinetics of coadministered drugs were studied in healthy subjects.

Effect of Coadministered Drugs on Ibrexafungerp Pharmacokinetics

Strong CYP3A4 Inhibitor: Ketoconazole (400 mg once daily for 15 days), a strong CYP3A4 and P-gp inhibitor, increased the ibrexafungerp AUC by 5.8-fold and C_{max} by 2.5-fold [see *Drug Interactions (7)*].

Moderate CYP3A4 Inhibitor: Diltiazem (240 mg once daily for 15 days) increased the ibrexafungerp AUC by 2.5-fold and C_{max} by 2.2-fold. This exposure change is not considered clinically significant at the approved recommended dosage for VVC.

Proton Pump Inhibitor: Pantoprazole (40 mg once daily for 5 days) decreased ibrexafungerp AUC by approximately 25% and C_{max} by 22%. This exposure change is not considered clinically significant at the approved recommended dosage for VVC.

Effect of Ibrexafungerp on the Pharmacokinetics of Coadministered Drugs

The effects of ibrexafungerp on substrates of CYP2C8, CYP3A4, P-gp, and OATP1B3 transporters were evaluated in studies that included loading doses of ibrexafungerp of 1250 to 1500 mg (2.1 to 2.5 times the approved recommended daily dose) for two days

followed by 750 mg (1.25 times the approved recommended daily dose) once daily for 3-7 days.

CYP2C8 substrates: Ibrexafungerp did not increase the AUC_{0-inf} or C_{max} of rosiglitazone, a moderate sensitive CYP2C8 substrate.

CYP3A4 substrates: Ibrexafungerp resulted in 1.4-fold increase in the AUC_{0-inf} and no effect on the C_{max} of the sensitive CYP3A4 and P-gp substrate tacrolimus.

P-gp substrates: Ibrexafungerp resulted in a 1.4-fold increase in the AUC₀₋₄₈ and a 1.25-fold increase in the C_{max} of the P-gp substrate dabigatran.

OATP1B3 transporters: Ibrexafungerp resulted in a 2.8-fold increase in the AUC₀₋₂₄ and a 3.5 fold increase in the C_{max} of the OATP1B3 transporter substrate pravastatin.

12.4 Microbiology

Mechanism of Action

Ibrexafungerp, a triterpenoid antifungal agent, inhibits glucan synthase, an enzyme involved in the formation of 1,3-β-D-glucan, an essential component of the fungal cell wall.

Ibrexafungerp has concentration-dependent fungicidal activity against *Candida* species as measured by time kill studies. Ibrexafungerp retains in vitro antifungal activity when tested at pH 4.5 (the normal vaginal pH).

Resistance

The potential for resistance to ibrexafungerp has been evaluated in vitro and is associated with mutations of the *fks-2* gene; the clinical relevance of these findings is unknown. Ibrexafungerp retains activity against most fluconazole resistant *Candida* spp.

Interaction with Other Antifungals

In vitro studies have not demonstrated antagonism between ibrexafungerp and azoles or echinocandins.

Antimicrobial Activity

Ibrexafungerp has been shown to be active against most isolates of the following microorganism both in vitro and in clinical infections [see *Indications and Usage (1)*]:

Candida albicans

The following in vitro data are available, but their clinical significance is unknown. Ibrexafungerp has in vitro activity against most isolates of the following microorganisms:

Candida auris

Candida dubliniensis

Candida glabrata

Candida guilliermondii

Candida keyfr

Candida krusei

Candida lusitanae

Candida parapsilosis

Candida tropicalis

13 NONCLINICAL TOXICOLOGY

13.1 Carcinogenesis, Mutagenesis, Impairment of Fertility

Carcinogenesis

Two-year carcinogenicity studies of ibrexafungerp have not been performed.

Mutagenesis

No mutagenic or clastogenic effects were detected in an in vitro bacterial reverse mutation assay, an in vitro chromosomal aberration assay, and an in vivo bone marrow micronucleus assay in rats.

Impairment of Fertility

In a male and female fertility study in rats, ibrexafungerp was administered to male rats by oral gavage in doses of 10, 20, 40, and 80 mg/kg/day for 28 days before mating and throughout mating and to female rats for 15 days before mating, during mating, and until gestation day (GD) 6. Ibrexafungerp did not impair fertility in either sex at any dose up to the highest dose of 80 mg/kg/day (approximately 10 times the RHD based on AUC comparison).

14 CLINICAL STUDIES

Two randomized placebo-controlled clinical trials (Trial 1, NCT03734991 and Trial 2, NCT03987620) with a similar design were conducted to evaluate the safety and efficacy of a single day of BREXAFEMME 600 mg (two 150 mg tablets per dose, administered 12 hours apart) for the treatment of VVC. Non-pregnant post-menarchal females with a diagnosis of VVC were eligible. A diagnosis of VVC was defined as (a) minimum composite vulvovaginal signs and symptoms (VSS) score of ≥ 4 with at least two signs or symptoms having a score of 2 (moderate) or greater; (b) positive microscopic examination with 10% KOH in a vaginal sample revealing yeast forms (hyphae/pseudohyphae) or budding yeasts, and (c) normal vaginal pH (≤ 4.5). The total composite VSS score was based on the vulvovaginal signs (erythema, edema, excoriation) and vulvovaginal symptoms (itching, burning, or irritation) where each was scored as 0= absent, 1= mild, 2= moderate, or 3= severe. Study visits included the test of cure (TOC, Day 8 to 14) visit and a follow-up (Day 21 to 29) visit. The modified intent to treat (MITT) population included randomized subjects with a baseline culture positive for *Candida* species who took at least 1 dose of study medication.

Trial 1 was conducted in the United States. The MITT population consisted of 190 patients treated with BREXAFEMME and 100 patients treated with placebo. The average age was 34 years (range 17-67 years), with 91% less than 50 years. Fifty-four percent (54%) were White and 40% were Black or African American, 26% were of Hispanic or Latino ethnicity. The average BMI was 30 and 9% had a history of diabetes. The median VSS score at baseline was 9 (range 4-18). The majority (92%) of the subjects were

culture-positive with *C. albicans*.

Trial 2 was conducted in the United States (39%) and Bulgaria (61%). The MITT population consisted of 189 patients treated with BREXAFEMME and 89 patients treated with placebo. The average age was 34 years (range 18-65 years), with 92% less than 50 years. Eighty-one percent (81%) were White and 19% were Black or African American, 10% were of Hispanic or Latino ethnicity. The average BMI was 26 and 5% had a history of diabetes. The median VSS score at baseline was 10 (range 4-18). The majority (89%) of the subjects were culture-positive with *C. albicans*.

Efficacy was assessed by clinical outcome at the TOC visit. A complete clinical response was defined as the complete resolution of signs and symptoms (VSS score of 0). Additional endpoints included a negative culture for *Candida* spp. at the TOC visit, and clinical outcome at the follow-up visit.

Statistically significantly greater percentages of patients experienced a complete clinical response at TOC, negative culture at TOC, and complete clinical response at follow-up with treatment with BREXAFEMME compared to placebo. The results for the clinical and mycological responses are presented in Table 3.

Table 3. Clinical and Mycological Response, MITT Population

	Trial 1		Trial 2	
	BREXAFEMME N = 190 n (%)	Placebo N = 100 n (%)	BREXAFEMME N = 189 n (%)	Placebo N = 89 n (%)
Complete Clinical Response at TOC¹	95 (50.0)	28 (28.0)	120 (63.5)	40 (44.9)
Difference (95% CI)	22.0 (10.2, 32.8)		18.6 (6.0, 30.6)	
P-value	0.001		0.009	
Negative Culture at TOC	94 (49.5)	19 (19.0)	111 (58.7)	26 (29.2)
Difference (95% CI)	30.5 (19.4, 40.3)		29.5 (17.2, 40.6)	
P-value	< 0.001		< 0.001	
Complete Clinical Response at follow-up²	113 (59.5)	44 (44.0)	137 (72.5)	44 (49.4)
Difference (95% CI)	15.5 (3.4, 27.1)		23.1 (10.8, 35.0)	
P-value	0.007		0.006	

¹Absence of signs and symptoms (VSS Score of 0) without need for additional antifungal therapy or topical drug therapy for the treatment of vulvovaginal symptoms at test of cure (TOC) visit.

²Absence of signs and symptoms (VSS Score of 0) without need for further antifungal treatment or topical drug therapy for the treatment of vulvovaginal symptoms prior to follow-up visit.

16 HOW SUPPLIED / STORAGE AND HANDLING

16.1 How Supplied

BREXAFEMME (ibrexafungerp tablets) are purple, oval, biconvex shaped tablets debossed with 150 on one side and SCYX on the other side. Each tablet contains 150 mg ibrexafungerp (equivalent to 189.5 mg of ibrexafungerp citrate).

Tablets are packaged in polyvinyl/polyvinylidene chloride child-resistant blister packs, four (4) tablets per pack. (NDC 75788-115-04)

16.2 Storage and Handling

Store BREXAFEMME tablets at 20°C to 25°C (68°F to 77°F). Brief exposure to 15°C to 30°C (59°F to 86°F) permitted (see USP Controlled Room Temperature).

17 PATIENT COUNSELING INFORMATION

Advise the patient to read the FDA approved patient labeling (Patient Information)

Risk of Fetal Toxicity

BREXAFEMME is contraindicated in pregnancy since it may cause fetal harm. Advise females to inform their healthcare provider of a known or suspected pregnancy [see *Warnings and Precautions (5.1) and Use in Specific Populations (8.1)*].

Advise patients who have inadvertently taken BREXAFEMME during pregnancy that there is a pregnancy safety study that monitors pregnancy outcomes. Encourage these patients to report their pregnancy to SCYNEXIS, Inc. at 1-888-982-7299 [see *Use in Specific Populations (8.1)*].

Advise females of reproductive potential to use effective contraception while taking BREXAFEMME and for 4 days after the last dose [see *Use in Specific Populations (8.3)*].

Important Administration Instructions

Inform the patient that each BREXAFEMME dose consists of two tablets. A total treatment course is two doses taken approximately 12 hours apart and consists of a total of four tablets.

If the first two tablets are taken in the morning, the second two tablets should be taken that same day in the evening. If the first two tablets are taken in the afternoon or evening, the second two tablets should be taken the following morning.

Inform the patient that BREXAFEMME can be taken with or without food [see *Dosage and Administration (2.1)*].

Concomitant Medications

Advise the patient to inform their health care provider if they are taking any other medications as certain medications can increase or decrease blood concentrations of BREXAFEMME or BREXAFEMME may increase or decrease blood concentrations of certain medications [see *Dosage and Administration (2.2)*].

Manufactured for:

SCYNEXIS, Inc.

Jersey City, NJ 07302

Patent: www.scynexis.com/product/patent

BREXAFEMME® is a registered trademark of SCYNEXIS, Inc.

PATIENT INFORMATION
BREXAFEMME® [brex a fem]
(ibrexafungerp tablets) for oral use

What is BREXAFEMME?

BREXAFEMME is a prescription medicine used to treat vaginal yeast infection. It is not known if BREXAFEMME is safe and effective in pre-adolescent females who have not started their menstruation.

Do not take BREXAFEMME if you:

Are pregnant or plan to become pregnant. BREXAFEMME may harm your unborn baby. Tell your healthcare provider if you are pregnant, think you might be pregnant, or plan to become pregnant.

Are allergic to ibrexafungerp.

Before you take BREXAFEMME, tell your healthcare provider about all of your medical conditions, including if you:

See “ **Do not take BREXAFEMME if you:**” Women who can become pregnant may be asked by their healthcare provider to take a pregnancy test before starting treatment with BREXAFEMME. Women who can become pregnant should use effective birth control while taking BREXAFEMME and for 4 days after the last dose of BREXAFEMME. Talk to your healthcare provider about birth control methods that may be right for you.

Are breastfeeding or plan to breastfeed. It is not known if BREXAFEMME passes into your breast milk. You and your healthcare provider should decide if you will take BREXAFEMME or breast feed.

BREXAFEMME may affect the way other medicines work, and other medicines may affect how BREXAFEMME works.

Tell your healthcare provider about all the medicines you take, including prescription and over-the-counter medicines, vitamins, and herbal supplements.

How should I take BREXAFEMME?

Take BREXAFEMME exactly as your healthcare provider tells you to take it. Take BREXAFEMME tablets by mouth with or without food.

What are the possible side effects of BREXAFEMME?

The most common side effects of BREXAFEMME include: loose stools, nausea, stomach pain, dizziness, and vomiting.

These are not all the possible side effects of BREXAFEMME.

Call your doctor for medical advice about side effects. You may report side effects to FDA at 1-800-FDA-1088.

How should I store BREXAFEMME?

Store BREXAFEMME at room temperature between 68°F to 77°F (20°C to

25°C).

BREXAFEMME is supplied in child resistant packaging. **Keep BREXAFEMME and all medicines out of reach of children.**

General information about the safe and effective use of BREXAFEMME.

Medicines are sometimes prescribed for purposes other than those listed in a Patient Information leaflet. Do not use BREXAFEMME for a condition for which it was not prescribed. Do not give BREXAFEMME to other people even if they have the same symptoms that you have. It may harm them. You can ask your pharmacist or healthcare provider for information about BREXAFEMME that is written for health professionals.

What are the ingredients in BREXAFEMME?

Active ingredient: ibrexafungerp

Inactive ingredients:

Tablet core: butylated hydroxyanisole, colloidal silicon dioxide, crospovidone, magnesium stearate, mannitol, and microcrystalline cellulose. **Tablet film**

coating: FD&C Blue #2, FD&C Red #40, hydroxypropyl cellulose, hydroxypropylmethyl cellulose 2910, talc and titanium dioxide.

BREXAFEMME is a registered trademark of SCYNEXIS, Inc.

Manufactured for: SCYNEXIS, Inc., Jersey City, New Jersey, 07302

©2021 SCYNEXIS, Inc.

For more information, call 1-888-982-SCYX (7299) or go to

www.brexafemme.com

This Patient Information has been approved by the U.S. Food and Drug Administration
Issued: 05/2021

PRINCIPAL DISPLAY PANEL

NDC 75788-115-04

Rx Only

4 Tablets

FOR ORAL USE ONLY

BREXAFEMME

150 mg per tablet



PRINCIPAL DISPLAY PANEL

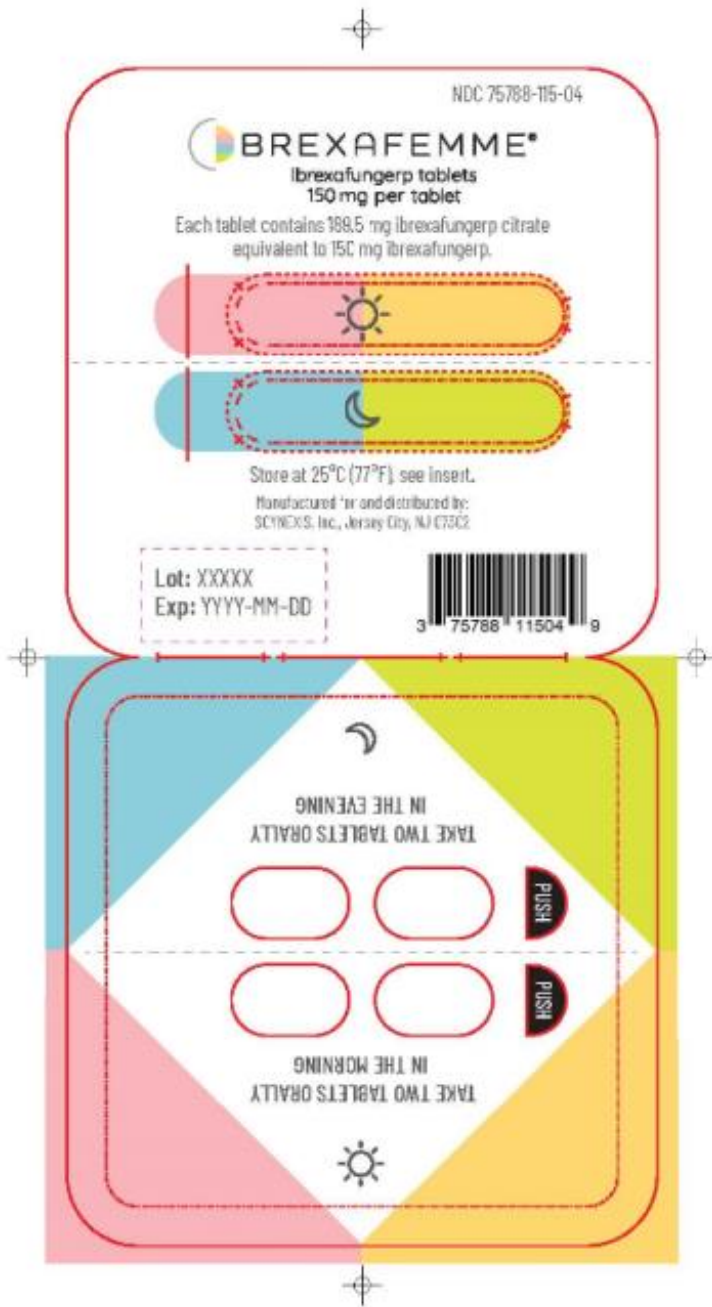
NDC 75788-115-04

Rx Only

Blister Pack

BREXAFEMME

150 mg per tablet



BREXAFEMME

ibrexafungerp tablet, film coated

Product Information

Product Type	HUMAN PRESCRIPTION DRUG	Item Code (Source)	NDC:75788-115
Route of Administration	ORAL		

Active Ingredient/Active Moiety

Ingredient Name	Basis of Strength	Strength
IBREXAFUNGERP CITRATE (UNII: M4NU2SDX3E) (IBREXAFUNGERP - UNII:A92JFM5XNU)	IBREXAFUNGERP	150 mg

Inactive Ingredients

Ingredient Name	Strength
MICROCRYSTALLINE CELLULOSE (UNII: OP1R32D61U)	
CROSPROVIDONE (UNII: 2S7830E561)	
MANNITOL (UNII: 3OWL53L36A)	
SILICON DIOXIDE (UNII: ETJ7Z6XBU4)	
MAGNESIUM PALMITOSTEARATE (UNII: R4OXA9G5BV)	
BUTYLATED HYDROXYANISOLE (UNII: REK4960K2U)	
HYDROXYPROPYL CELLULOSE, UNSPECIFIED (UNII: 9XZ8H6N6OH)	
TITANIUM DIOXIDE (UNII: 15FIX9V2JP)	
TALC (UNII: 7SEV7J4R1U)	
FD&C RED NO. 40 (UNII: WZB9127XOA)	
FD&C BLUE NO. 2 (UNII: L06K8R7DQK)	

Product Characteristics

Color	purple (lilac)	Score	no score
Shape	OVAL	Size	16mm
Flavor		Imprint Code	SCYX;150
Contains			

Packaging

#	Item Code	Package Description	Marketing Start Date	Marketing End Date
1	NDC:75788-115-04	1 in 1 CARTON	07/01/2021	
1		4 in 1 BLISTER PACK; Type 0: Not a Combination Product		

Marketing Information

Marketing Category	Application Number or Monograph Citation	Marketing Start Date	Marketing End Date
NDA	NDA214900	07/01/2021	

Labeler - SCYNEXIS, INC. (001073530)

Revised: 6/2021

SCYNEXIS, INC.