

# GIAPREZA- angiotensin ii injection

## La Jolla Pharmaceutical Company

-----

### HIGHLIGHTS OF PRESCRIBING INFORMATION

These highlights do not include all the information needed to use GIAPREZA safely and effectively. See full prescribing information for GIAPREZA.

### GIAPREZA® (angiotensin II) Injection for Intravenous Infusion

Initial U.S. Approval: 2017

### -----RECENT MAJOR CHANGES-----

Dosage and Administration, Preparation (2.1)

12/2021

### -----INDICATIONS AND USAGE-----

GIAPREZA is a vasoconstrictor to increase blood pressure in adults with septic or other distributive shock. ( 1)

### -----DOSAGE AND ADMINISTRATION-----

Dilute GIAPREZA in 0.9% sodium chloride prior to use. See Full Prescribing Information for instructions on preparation and administration of injection. Diluted solution may be stored at room temperature or under refrigeration and should be discarded after 24 hours. GIAPREZA must be administered as an intravenous infusion. ( 2.1)

- Start GIAPREZA intravenously at 20 nanograms (ng)/kg/min. Titrate as frequently as every 5 minutes by increments of up to 15 ng/kg/min as needed. During the first 3 hours, the maximum dose should not exceed 80 ng/kg/min. Maintenance dose should not exceed 40 ng/kg/min. Doses as low as 1.25 ng/kg/min may be used.( 2.2)

### -----DOSAGE FORMS AND STRENGTHS-----

Injection: 0.5 mg/mL and 2.5 mg/mL in a vial. (3)

### -----CONTRAINDICATIONS-----

None (4.1) (4)

### -----WARNINGS AND PRECAUTIONS-----

- There is a potential for venous and arterial thrombotic and thromboembolic events in patients who receive GIAPREZA. Use concurrent venous thromboembolism (VTE) prophylaxis. ( 5.1, 6.1)

### -----ADVERSE REACTIONS-----

The most common adverse reactions reported in greater than 10% of GIAPREZA treated patients were thromboembolic events. ( 6.1)

**To report SUSPECTED ADVERSE REACTIONS, contact La Jolla Pharmaceutical Company at 1-800-651-3861 or FDA at 1-800-FDA-1088 or [www.fda.gov/medwatch](http://www.fda.gov/medwatch).**

### -----DRUG INTERACTIONS-----

- Angiotensin converting enzyme (ACE) inhibitors
  - ACE inhibitors may increase response to GIAPREZA. ( 7.1)
- Angiotensin II Receptor Blockers (ARB)
  - ARBs may reduce response to GIAPREZA. ( 7.2)

**Revised: 12/2021**

---

## **FULL PRESCRIBING INFORMATION: CONTENTS\***

### **1. INDICATIONS AND USAGE**

### **2. DOSAGE AND ADMINISTRATION**

2.1. Preparation

2.2. Administration

### **3. DOSAGE FORMS AND STRENGTHS**

### **4. CONTRAINDICATIONS**

### **5. WARNINGS AND PRECAUTIONS**

5.1 Risk for Thrombosis

### **6. ADVERSE REACTIONS**

6.1. Clinical Trials Experience

### **7. DRUG INTERACTIONS**

7.1. Angiotensin Converting Enzyme (ACE) Inhibitors

7.2. Angiotensin II Receptor Blockers (ARB)

### **8. USE IN SPECIFIC POPULATIONS**

8.1. Pregnancy

8.2. Lactation

8.4. Pediatric Use

8.5. Geriatric Use

### **10. OVERDOSAGE**

### **11. DESCRIPTION**

### **12. CLINICAL PHARMACOLOGY**

12.1. Mechanism of Action

12.2. Pharmacodynamics

12.3. Pharmacokinetics

### **13. NONCLINICAL TOXICOLOGY**

13.1. Carcinogenesis, Mutagenesis, Impairment of Fertility

13.2. Animal Toxicology and/or Pharmacology

13.3. Safety Pharmacology

### **14. CLINICAL STUDIES**

14.1. ATHOS-3

### **16. HOW SUPPLIED/STORAGE AND HANDLING**

16.1. How Supplied

16.2. Storage and Handling

\* Sections or subsections omitted from the full prescribing information are not listed.

---

## **FULL PRESCRIBING INFORMATION**

### **1. INDICATIONS AND USAGE**

GIAPREZA increases blood pressure in adults with septic or other distributive shock [see *Clinical Studies (14)*].

### **2. DOSAGE AND ADMINISTRATION**

## **2.1. Preparation**

Parenteral drug products should be inspected visually for particulate matter and discoloration prior to administration, whenever solution and container permit.

GIAPREZA must be administered as an intravenous infusion. GIAPREZA must be diluted in 0.9% sodium chloride prior to use. Dilute the appropriate amount of GIAPREZA in a normal saline (0.9% sodium chloride) infusion bag to achieve the desired final concentration of 5,000 ng/mL or 10,000 ng/mL.

Discard vial and any unused portion of the drug product after use.

Diluted solution may be stored at room temperature (20°C to 25°C [68°F to 77°F]) or under refrigeration (2°C to 8°C [36°F to 46°F]). Discard prepared solution after 24 hours at room temperature or under refrigeration.

## **2.2. Administration**

The recommended starting dosage of GIAPREZA is 20 nanograms (ng)/kg/min via continuous intravenous infusion. Administration through a central venous line is recommended.

Monitor blood pressure response and titrate GIAPREZA as frequently as every 5 minutes by increments of up to 15 ng/kg/min as needed to achieve or maintain target blood pressure. Do not exceed 80 ng/kg/min during the first 3 hours of treatment. Maintenance dose should not exceed 40 ng/kg/min. Doses as low as 1.25 ng/kg/min may be used.

Once the underlying shock has sufficiently improved, down-titrate every 5 to 15 minutes by increments of up to 15 ng/kg/min based on blood pressure.

## **3. DOSAGE FORMS AND STRENGTHS**

Injection: 0.5 mg/mL angiotensin II and 2.5 mg/mL angiotensin II in a vial.

GIAPREZA is a clear, aqueous solution.

## **4. CONTRAINDICATIONS**

None.

## **5. WARNINGS AND PRECAUTIONS**

### **5.1 Risk for Thrombosis**

The safety of GIAPREZA was evaluated in 321 adults with septic or other distributive shock in a randomized, double-blind, placebo-controlled study, ATHOS-3. There was a higher incidence of arterial and venous thrombotic and thromboembolic events in patients who received GIAPREZA compared to placebo-treated patients in the ATHOS-3 study (13% vs. 5%). The major imbalance was in deep venous thromboses. Use concurrent venous thromboembolism (VTE) prophylaxis.

## 6. ADVERSE REACTIONS

### 6.1. Clinical Trials Experience

Because clinical trials are conducted under widely varying conditions, adverse reaction rates observed in the clinical trials of a drug cannot be directly compared to rates in the clinical trials of another drug and may not reflect the rates observed in practice.

#### ATHOS-3

The safety of GIAPREZA was evaluated in ATHOS-3 [see *Warnings and Precautions(5.1)*]. Patients in ATHOS-3 were receiving other vasopressors in addition to GIAPREZA or placebo, which were titrated to effect on mean arterial pressure (MAP).

Table 1 summarizes adverse reactions with an incidence of at least 4% among patients treated with GIAPREZA and with a rate of at least 1.5% higher with GIAPREZA than with placebo.

**Table 1: Adverse Reactions Occurring in  $\geq$  4% of Patients Treated with GIAPREZA and  $\geq$  1.5% More Often than in Placebo-treated Patients in ATHOS-3**

<b>Adverse Event</b>	<b>GIAPREZA N=163</b>	<b>Placebo N=158</b>
Thromboembolic events *	21 (12.9%)	8 (5.1%)
Deep vein thrombosis	7 (4.3%)	0 (0.0%)
Thrombocytopenia	16 (9.8%)	11 (7.0%)
Tachycardia	14 (8.6%)	9 (5.7%)
Fungal infection	10 (6.1%)	2 (1.3%)
Delirium	9 (5.5%)	1 (0.6%)
Acidosis	9 (5.5%)	1 (0.6%)
Hyperglycemia	7 (4.3%)	4 (2.5%)
Peripheral ischemia	7 (4.3%)	4 (2.5%)

\* Including arterial and venous thrombotic events

## 7. DRUG INTERACTIONS

### 7.1. Angiotensin Converting Enzyme (ACE) Inhibitors

Concomitant use of angiotensin converting enzyme (ACE) inhibitors may increase the response to GIAPREZA.

### 7.2. Angiotensin II Receptor Blockers (ARB)

Concomitant use of angiotensin II receptor blockers (ARBs) may decrease the response to GIAPREZA.

## 8. USE IN SPECIFIC POPULATIONS

## **8.1. Pregnancy**

### Risk Summary

The published data on angiotensin II use in pregnant women are not sufficient to determine a drug-associated risk of adverse developmental outcomes. Animal reproduction studies have not been conducted with GIAPREZA.

All pregnancies have a background risk of birth defects, loss, or other adverse outcomes. The estimated background risk of major birth defects and miscarriage for the indicated population is unknown. In the U.S. general population, the estimated background risk of major birth defects and miscarriage in clinically recognized pregnancies is 2 to 4% and 15 to 20%, respectively.

### Clinical Considerations

#### *Disease-associated maternal and/or embryo/fetal risk*

Septic or other distributive shock is a medical emergency that can be fatal if left untreated. Delaying treatment in pregnant women with hypotension associated with septic or other distributive shock is likely to increase the risk of maternal and fetal morbidity and mortality.

## **8.2. Lactation**

### Risk Summary

It is not known whether GIAPREZA is present in human milk. No data are available on the effects of angiotensin II on the breastfed child or the effects on milk production.

## **8.4. Pediatric Use**

The safety and efficacy of GIAPREZA in pediatric patients have not been established.

## **8.5. Geriatric Use**

In ATHOS-3, 48% of the total patient population was aged 65 years and older. There was no significant difference in safety or efficacy between patients less than 65 and those 65 years or older when treated with GIAPREZA .

## **10. OVERDOSAGE**

Overdose of GIAPREZA would be expected to result in hypertension, necessitating close monitoring and supportive care. Effects are expected to be brief because the half-life of angiotensin II is less than one minute.

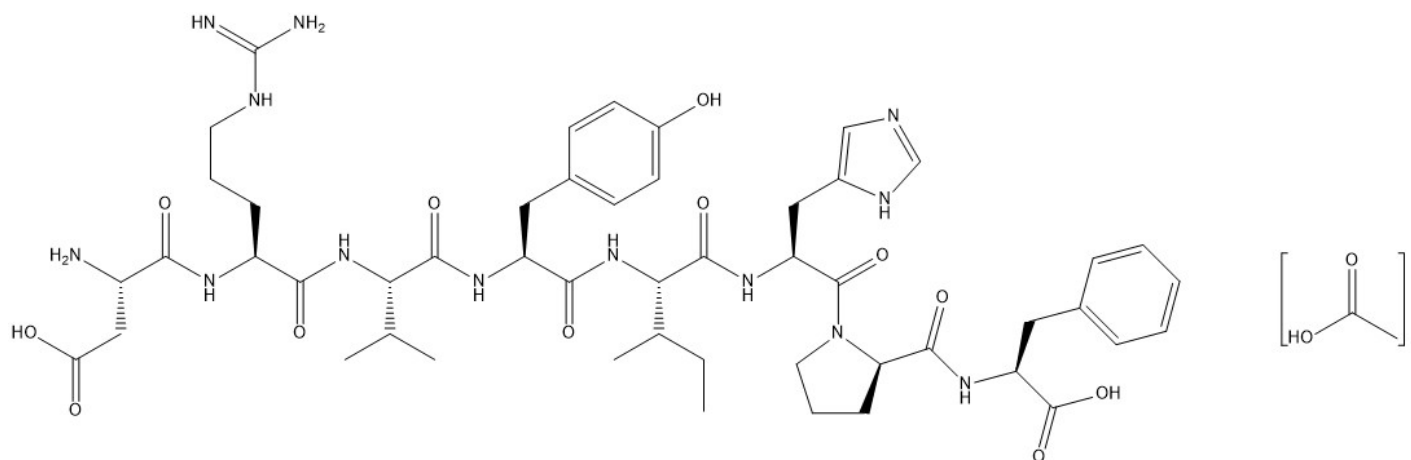
## **11. DESCRIPTION**

Angiotensin II is a naturally occurring peptide hormone of the renin-angiotensin-aldosterone system (RAAS) that causes vasoconstriction and an increase in blood pressure. GIAPREZA is a sterile, aqueous solution of synthetic human angiotensin II for intravenous administration by infusion. Each 2.5 mg/mL vial of GIAPREZA contains 2.5 mg angiotensin II equivalent to an average of 2.9 mg angiotensin II acetate, 25 mg mannitol, and Water for Injection adjusted with sodium hydroxide and/or hydrochloric

acid to pH of 5.5. Each 0.5 mg/mL vial of GIAPREZA contains 0.5 mg angiotensin II equivalent to an average of 0.6 mg angiotensin II acetate, 25 mg mannitol, and Water for Injection adjusted with sodium hydroxide and/or hydrochloric acid to pH of 5.5.

The chemical name of the synthetic angiotensin II acetate is L-Aspartyl-L-arginyl-L-valyl-L-tyrosyl-L-isoleucyl-L-histidyl-L-prolyl-L-phenylalanine, acetate salt. The counter ion acetate is present in a non-stoichiometric ratio. It is a white to off-white powder, soluble in water.

The structure of angiotensin II acetate is shown below.



Molecular formula:  $C_{50}H_{71}N_{13}O_{12} \cdot (C_2H_4O_2)_n$ ; (n = number of acetate molecules; theoretical n = 3)

Average molecular weight: 1046.2 (as free base).

## 12. CLINICAL PHARMACOLOGY

### 12.1. Mechanism of Action

Angiotensin II raises blood pressure by vasoconstriction and increased aldosterone release. Direct action of angiotensin II on the vessel wall is mediated by binding to the G-protein-coupled angiotensin II receptor type 1 on vascular smooth muscle cells, which stimulates  $Ca^{2+}$ /calmodulin-dependent phosphorylation of myosin and causes smooth muscle contraction.

### 12.2. Pharmacodynamics

For the 114 (70%) patients in the GIAPREZA arm who reached the target MAP at Hour 3, the median time to reach the target MAP endpoint was approximately 5 minutes. GIAPREZA is titrated to effect for each individual patient.

### 12.3. Pharmacokinetics

Following intravenous infusion of angiotensin II in adults with septic or other distributive shock, serum levels of angiotensin II are similar at Baseline and Hour 3 after intravenous infusion. After 3 hours of treatment, however, the serum level of angiotensin I (the angiotensin II precursor peptide) is reduced by approximately 40%.

#### **Distribution:**

No specific studies were conducted that examined the distribution of GIAPREZA.

### **Metabolism and Excretion:**

No specific studies were conducted that examined the metabolism and excretion of GIAPREZA.

The plasma half-life of IV administered angiotensin II is less than one minute. It is metabolized by aminopeptidase A and angiotensin converting enzyme 2 to angiotensin-(2-8) [angiotensin III] and angiotensin-(1-7), respectively in plasma, erythrocytes and many of the major organs (i.e., intestine, kidney, liver and lung). Angiotensin II type 1 receptor (AT1) mediated activity of angiotensin III is approximately 40% of angiotensin II; however, aldosterone synthesis activity is similar to angiotensin II. Angiotensin-(1-7) exerts the opposite effects of angiotensin II on AT1 receptors and causes vasodilation.

### **Specific Populations**

No formal pharmacokinetic studies were conducted with GIAPREZA in the following specific populations.

#### *Renal Impairment*

The clearance of angiotensin II is not dependent on renal function. Therefore, the pharmacokinetics of GIAPREZA are not expected to be influenced by renal impairment.

#### *Hepatic Impairment*

The clearance of angiotensin II is not dependent on hepatic function. Therefore, the pharmacokinetics of GIAPREZA are not expected to be influenced by hepatic impairment.

#### *Age*

The effect of age was analyzed in the 163 patients receiving GIAPREZA in ATHOS-3. There were no significant differences in pharmacokinetics between age groups (< 65 years /  $\geq$  65 years).

#### *Male and Female Patients*

The effect of sex was analyzed in the 163 patients receiving GIAPREZA in ATHOS-3. There were no significant differences in pharmacokinetics between male and female patients.

## **13. NONCLINICAL TOXICOLOGY**

### **13.1. Carcinogenesis, Mutagenesis, Impairment of Fertility**

No genetic toxicity studies have been conducted with GIAPREZA. No carcinogenicity or fertility studies with GIAPREZA have been conducted in animals.

### **13.2. Animal Toxicology and/or Pharmacology**

No animal toxicology studies were conducted with GIAPREZA.

### **13.3. Safety Pharmacology**

In a cardiovascular safety pharmacology study in normotensive dogs, GIAPREZA doses

of 150, 450, and 1,800 ng/kg (5, 15, and 60 ng/kg/min) were infused intravenously for 30 minutes each. At  $\geq 450$  ng/kg, GIAPREZA caused significantly elevated MAP and systemic vascular resistance, as expected. The 1,800 ng/kg dose also caused increased heart rate, increased systemic vascular resistance, increased left ventricular systolic and end-diastolic pressures, and PR interval prolongation. GIAPREZA did not significantly alter respiratory rate or cause electrocardiographic changes in QRS duration or QTc.

## **14. CLINICAL STUDIES**

### **14.1. ATHOS-3**

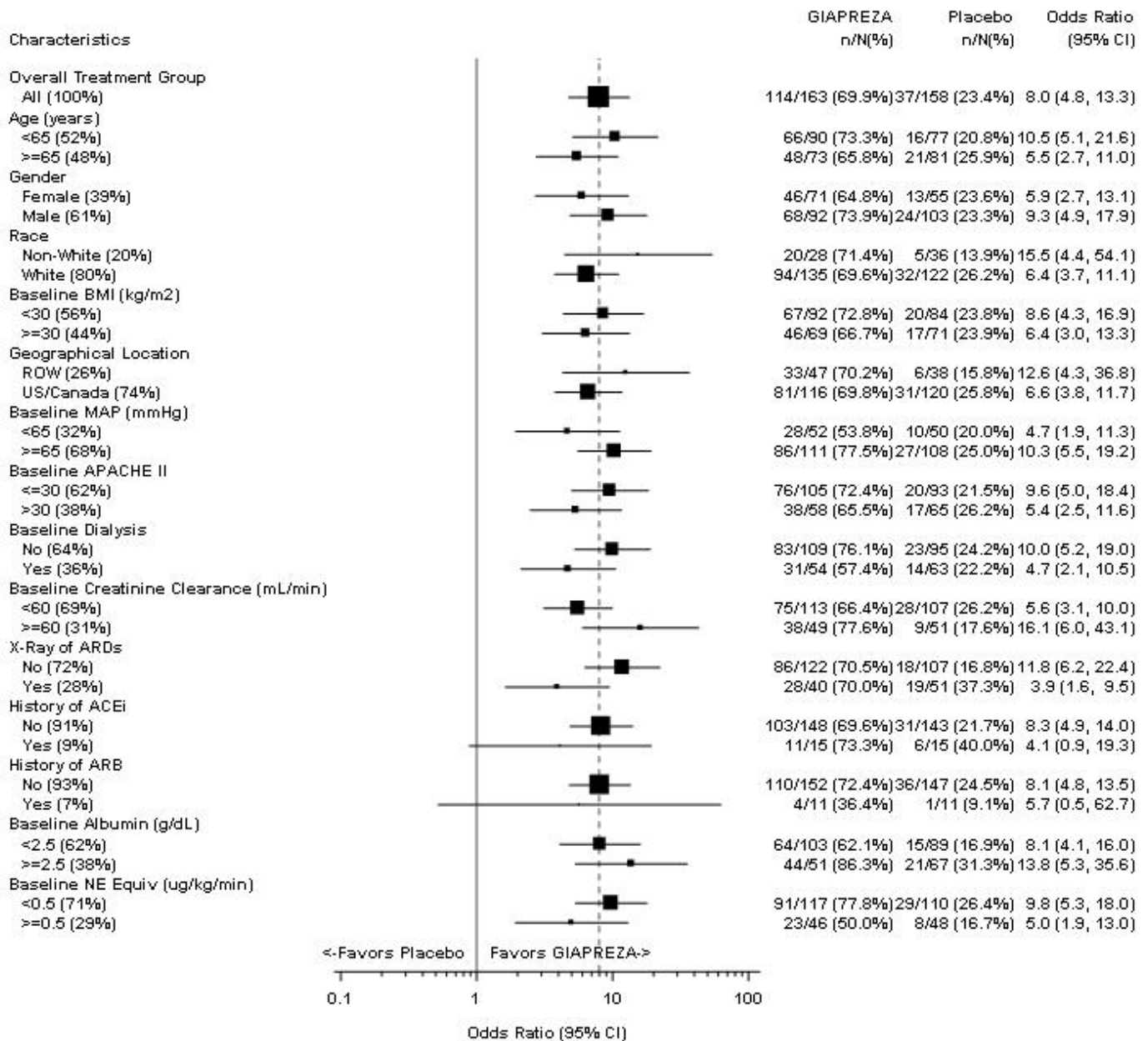
The Angiotensin II for the Treatment of High-Output Shock (ATHOS-3) trial was a double-blind study in which 321 adults with septic or other distributive shock who remained hypotensive despite fluid and vasopressor therapy were randomized 1:1 and treated with either GIAPREZA or placebo, both in addition to background vasopressor therapy. Doses of GIAPREZA or placebo were titrated to a target MAP of  $\geq 75$  mmHg during the first 3 hours of treatment while doses of other vasopressors were maintained. From Hour 3 to Hour 48, GIAPREZA or placebo were titrated to maintain MAP between 65 and 70 mmHg while reducing doses of other vasopressors. The primary endpoint was the percentage of subjects who achieved either a MAP  $\geq 75$  mmHg or a  $\geq 10$  mmHg increase in MAP without an increase in baseline vasopressor therapy at 3 hours.

91% of subjects had septic shock; the remaining subjects had other forms of distributive shock such as neurogenic shock. At the time of study drug administration, 97% of subjects were receiving norepinephrine, 67% vasopressin, 15% phenylephrine, 13% epinephrine, and 2% dopamine. 83% of subjects had received two or more vasopressors and 47% three or more vasopressors prior to study drug administration. 61% of subjects were male, 80% were White, 10% were Black, and 10% were other races. The median age of subjects was 64 years (range: 22-89 years). Patients requiring high doses of steroids, patients with a history of asthma or bronchospasm, and patients with Raynaud's syndrome were not included.

The primary endpoint was achieved by 70% of patients randomized to GIAPREZA compared to 23% of placebo patients;  $p < 0.0001$  (a treatment effect of 47%). Figure 1 shows the results in all patients and in selected subgroups.

#### **Figure 1: ATHOS-3: Primary Endpoint - Overall Result and Results in Selected Subgroups**





NE Equiv = norepinephrine equivalent dose: the sum of all vasopressor doses with each vasopressor dose converted to the clinically equivalent norepinephrine dose.

Note: The figure above presents effects in various subgroups, all of which are baseline characteristics. The 95% confidence limits that are shown do not take into account the number of comparisons made and may not reflect the effect of a particular factor after adjustment for all other factors. Apparent homogeneity or heterogeneity among groups should not be over-interpreted.

In the GIAPREZA-treated group, the median time to reach the target MAP endpoint was 5 minutes. The effect on MAP was sustained for at least the first three hours of treatment. The median dose of GIAPREZA was 10 ng/kg/min at 30 minutes. Of the 114 responders at Hour 3, only 2 (1.8%) received more than 80 ng/kg/min.

Patients were not necessarily on maximum doses of other vasopressors at the time of randomization. The effect of GIAPREZA when added to maximum doses of other vasopressors is unknown.

Mortality through Day 28 was 46% on GIAPREZA and 54% on placebo (hazard ratio 0.78; 95% confidence interval 0.57 - 1.07).

## 16. HOW SUPPLIED/STORAGE AND HANDLING

### 16.1. How Supplied

GIAPREZA (angiotensin II) Injection is a clear, aqueous solution for administration by intravenous infusion supplied as a single-dose vial:

- 2.5 mg/mL vial: NDC 68547-501-02: A carton of one 1 mL single-dose vial containing 2.5 mg angiotensin II (as a sterile liquid).
- 0.5 mg/mL vial: NDC 68547-005-05: A carton of five 1 mL single-dose vials (NDC 68547-005-01) containing 0.5 mg angiotensin II (as a sterile liquid).
- 0.5 mg/mL vial: NDC 68547-005-01: A carton of one 1 mL single-dose vial containing 0.5 mg angiotensin II (as a sterile liquid).

### 16.2. Storage and Handling

- GIAPREZA vials should be stored in the refrigerator between 2°C to 8°C (36°F to 46°F).
- Discard prepared diluted solution after 24 hours at room temperature or under refrigeration.

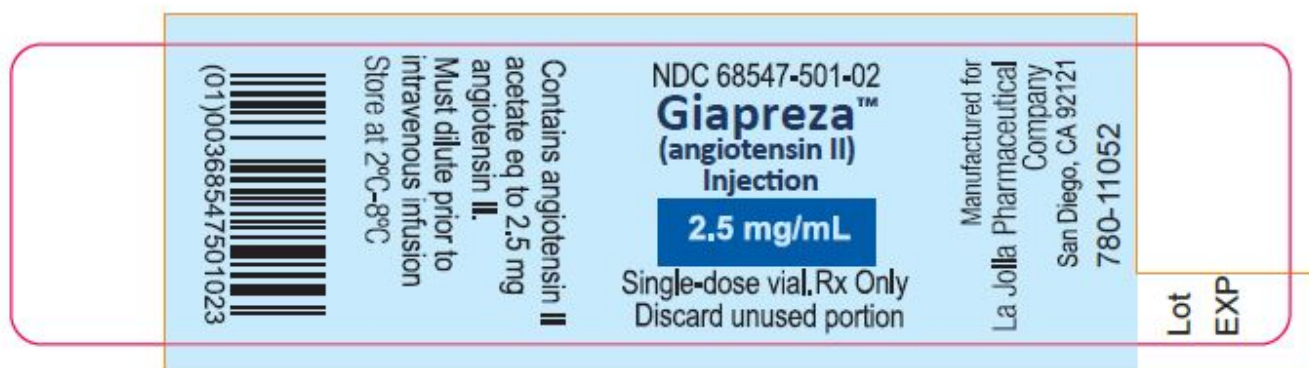
Manufactured for:

La Jolla Pharmaceutical Company  
Waltham, MA 02451 USA

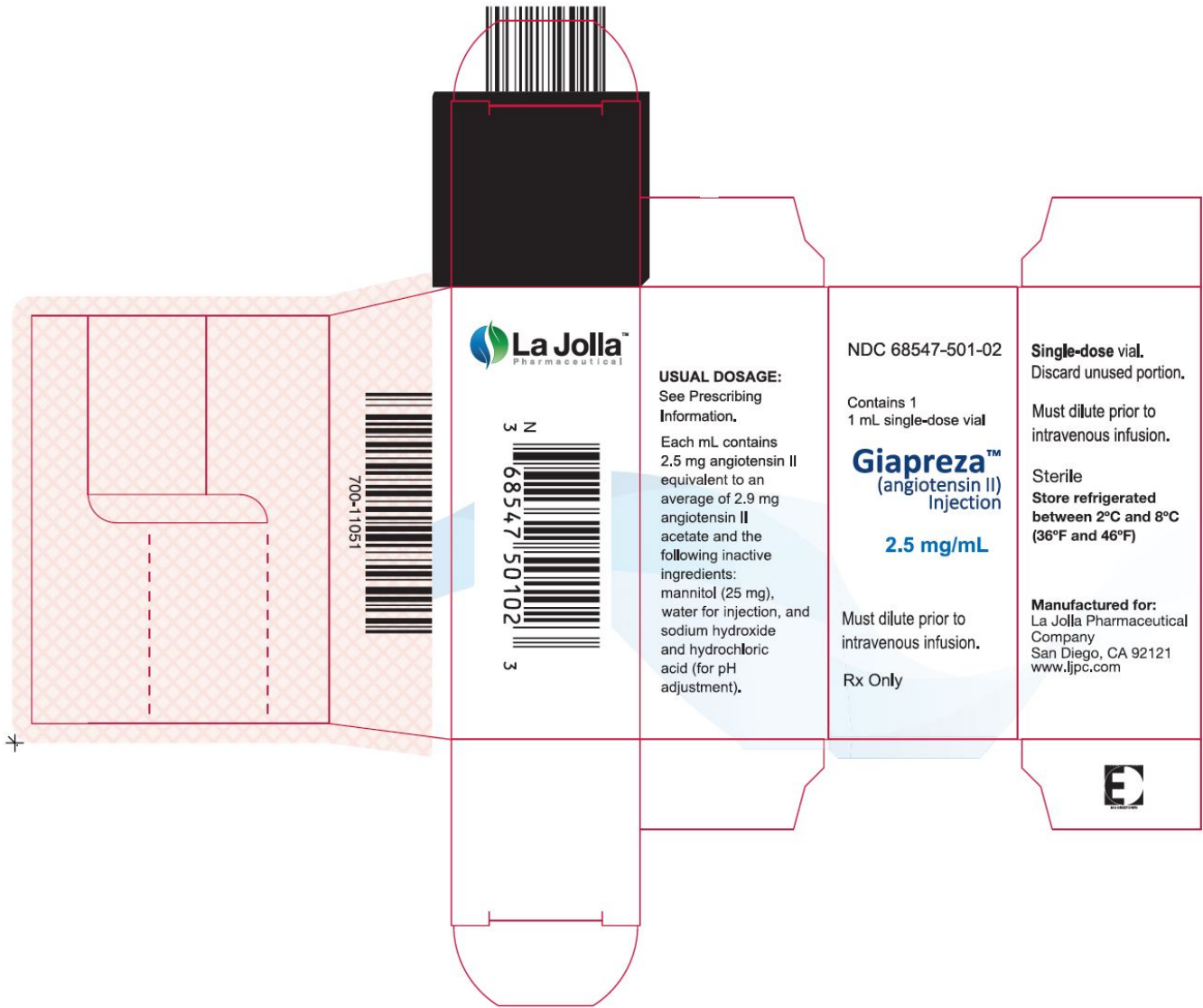
GIAPREZA® is a registered trademark of La Jolla Pharmaceutical Company.

©2021, La Jolla Pharmaceutical Company. All rights reserved.

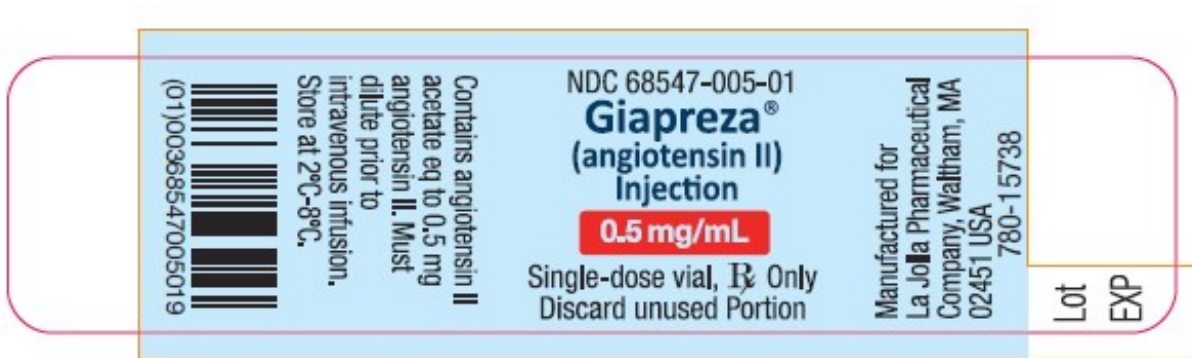
### Package Label - 2.5 mg/mL Single-Dose Vial Label



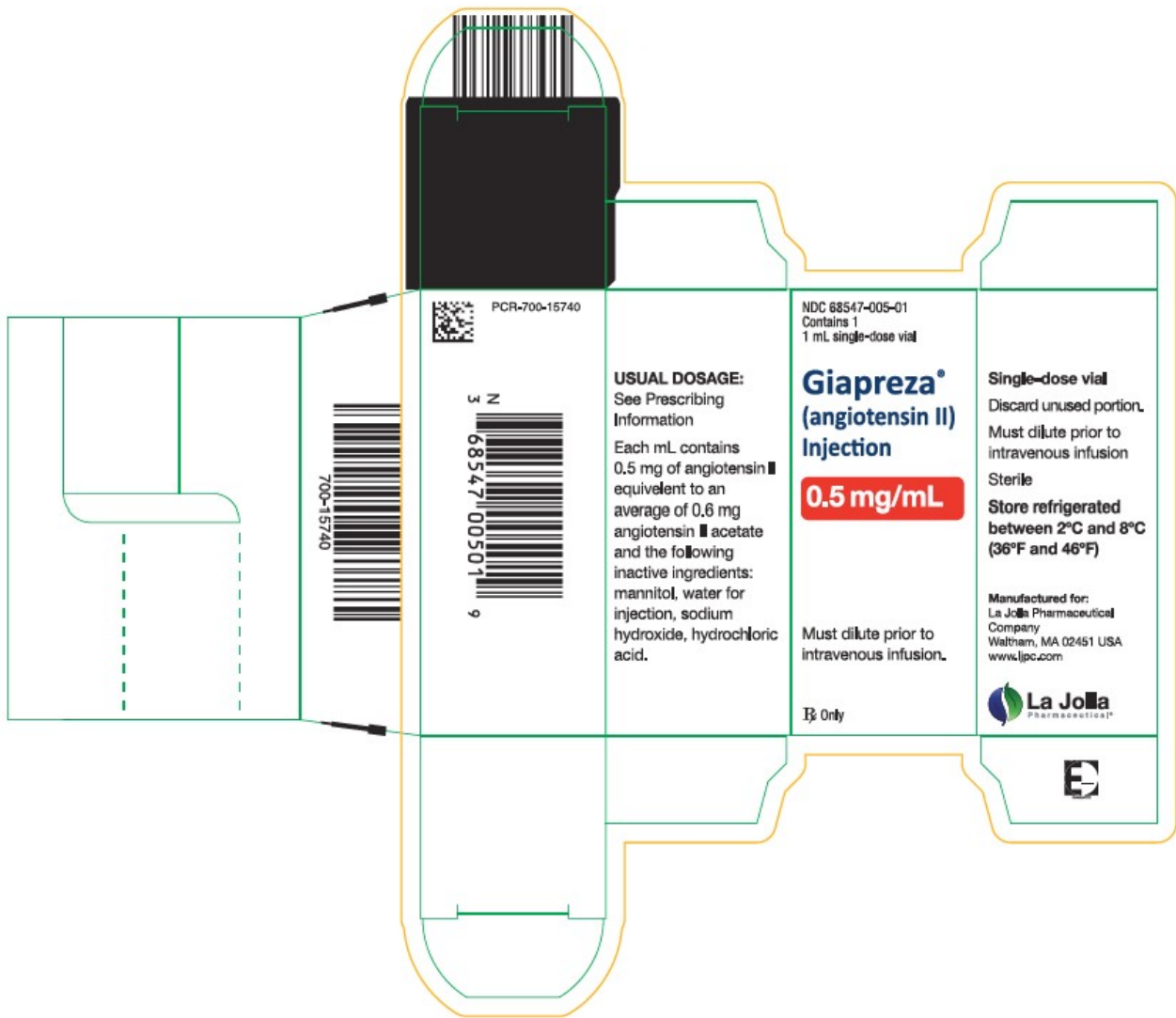
### Package Label - 2.5 mg/mL Single Vial Carton Label



### Package Label - 0.5 mg/mL Single-Dose Vial Label



### Package Label - 0.5 mg/mL Single Vial Carton Label



## GIAPREZA

angiotensin ii injection

### Product Information

<b>Product Type</b>	HUMAN PRESCRIPTION DRUG	<b>Item Code (Source)</b>	NDC:68547-501
<b>Route of Administration</b>	INTRAVENOUS		

### Active Ingredient/Active Moiety

Ingredient Name	Basis of Strength	Strength
ANGIOTENSIN II (UNII: M089EFU921) (ANGIOTENSIN II - UNII:M089EFU921)	ANGIOTENSIN II	2.5 mg in 1 mL

### Inactive Ingredients

Ingredient Name	Strength
MANNITOL (UNII: 3OWL53L36A)	25 mg in 1 mL
WATER (UNII: 059QF0KO0R)	

**SODIUM HYDROXIDE** (UNII: 55X04QC32I)

**HYDROCHLORIC ACID** (UNII: QTT17582CB)

### Packaging

#	Item Code	Package Description	Marketing Start Date	Marketing End Date
1	NDC:68547-501-02	1 in 1 CARTON	02/05/2018	
1		1 mL in 1 VIAL, SINGLE-DOSE; Type 0: Not a Combination Product		

### Marketing Information

Marketing Category	Application Number or Monograph Citation	Marketing Start Date	Marketing End Date
NDA	NDA209360	02/05/2018	

## GIAPREZA

angiotensin ii injection

### Product Information

Product Type	HUMAN PRESCRIPTION DRUG	Item Code (Source)	NDC:68547-005
Route of Administration	INTRAVENOUS		

### Active Ingredient/Active Moiety

Ingredient Name	Basis of Strength	Strength
<b>ANGIOTENSIN II</b> (UNII: M089EFU921) (ANGIOTENSIN II - UNII:M089EFU921)	ANGIOTENSIN II	0.5 mg in 1 mL

### Inactive Ingredients

Ingredient Name	Strength
<b>MANNITOL</b> (UNII: 3OWL53L36A)	25 mg in 1 mL
<b>WATER</b> (UNII: 059QF0KO0R)	
<b>SODIUM HYDROXIDE</b> (UNII: 55X04QC32I)	
<b>HYDROCHLORIC ACID</b> (UNII: QTT17582CB)	

### Packaging

#	Item Code	Package Description	Marketing Start Date	Marketing End Date
1	NDC:68547-005-01	1 in 1 CARTON	09/15/2022	
1		1 mL in 1 VIAL, SINGLE-DOSE; Type 0: Not a Combination Product		

## Marketing Information

Marketing Category	Application Number or Monograph Citation	Marketing Start Date	Marketing End Date
NDA	NDA209360	09/15/2022	

**Labeler** - La Jolla Pharmaceutical Company (613541192)

## Establishment

Name	Address	ID/FEI	Business Operations
Cangene Biopharma, LLC dba Emergent BioSolutions		050783398	manufacture(68547-501, 68547-005) , analysis(68547-501, 68547-005)

Revised: 6/2022

La Jolla Pharmaceutical Company