

RABEPRAZOLE SODIUM- rabeprazole sodium tablet, delayed release
St. Mary's Medical Park Pharmacy

HIGHLIGHTS OF PRESCRIBING INFORMATION
These highlights do not include all the information needed to use RABEPRAZOLE SODIUM DELAYED-RELEASE TABLETS safely and effectively. See full prescribing information for RABEPRAZOLE SODIUM DELAYED-RELEASE TABLETS.

RABEPRAZOLE SODIUM delayed-release tablets, for oral use

Initial U.S. Approval: 1999

RECENT MAJOR CHANGES -----

Warnings and Precautions, Fundic Gland Polyps (5.10) 06/2018

INDICATIONS AND USAGE -----

Rabeprazole Sodium delayed-release tablets is a proton pump inhibitor (PPI) indicated in adults for:

- Healing of Erosive or Ulcerative Gastroesophageal Reflux Disease (GERD) (1.1).
- Maintenance of Healing of Erosive or Ulcerative GERD (1.2).
- Treatment of Symptomatic GERD (1.3).
- Healing of Duodenal Ulcers (1.4).
- *Helicobacter pylori* Eradication to Reduce the Risk of Duodenal Ulcer Recurrence (1.5).
- Treatment of Pathological Hypersecretory Conditions, Including Zollinger-Ellison Syndrome (1.6).

In adolescent patients 12 years of age and older for:

- Short-term treatment of Symptomatic GERD (1.7).

DOSAGE AND ADMINISTRATION -----

| Indications | Recommended Dosage (2) |
|---|--|
| Healing of Erosive or Ulcerative Gastroesophageal Reflux Disease (GERD) | 20 mg once daily for 4 to 8 weeks |
| Maintenance of Healing of Erosive or Ulcerative GERD*studied for 12 months | 20 mg once daily* |
| Symptomatic GERD in Adults | 20 mg once daily for 4 weeks |
| Healing of Duodenal Ulcers | 20 mg once daily after morning meal for up to 4 weeks |
| <i>Helicobacter pylori</i> Eradication to Reduce the Risk of Duodenal Ulcer Recurrence | |
| Three Drug Regimen: Rabeprazole Sodium delayed-release Tablets 20 mg Amoxicillin 1000 mg Clarithromycin 500 mg | <i>All three medications should be taken twice daily with morning and evening meals for 7 days</i> |
| Pathological Hypersecretory Conditions, Including Zollinger-Ellison Syndrome | Starting dose 60 mg once daily then adjust to patient needs |
| Symptomatic GERD in Adolescents 12 Years of Age and Older | 20 mg once daily for up to 8 weeks |

Administration Instructions (2):

- Swallow Rabeprazole Sodium delayed-release tablets whole. Do not chew, crush or split the tablets.
- For the treatment of duodenal ulcers take Rabeprazole Sodium delayed-release tablets after a meal.
- For *Helicobacter pylori* eradication take Rabeprazole Sodium delayed-release tablets with food.
- For all other indications Rabeprazole Sodium delayed-release tablets can be taken with or without food.

DOSAGE FORMS AND STRENGTHS -----

- Delayed-Release Tablets: 20 mg (3).

CONTRAINDICATIONS -----

- Patients with a history of hypersensitivity to rabeprazole (4).

- PPIs, including Rabeprazole Sodium delayed-release tablets, are contraindicated in patients receiving rilpivirine-containing products (4,7).
- Refer to the Contraindications section of the prescribing information for clarithromycin and amoxicillin, when administered in combination with Rabeprazole Sodium delayed-release tablets (4).

-----**WARNINGS AND PRECAUTIONS**-----

- Gastric Malignancy : In adults, symptomatic response to therapy with rabeprazole does not preclude the presence of gastric malignancy. Consider additional follow-up and diagnostic testing (5.1).
- Use with Warfarin : Monitor for increases in INR and prothrombin time (5.2, 7).
- Acute Interstitial Nephritis : Observed in patients taking PPIs (5.3).
- Clostridium difficile-Associated Diarrhea : PPI therapy may be associated with increased risk of (5.4).
- Bone Fracture : Long-term and multiple daily dose PPI therapy may be associated with an increased risk for osteoporosis related fractures of the hip, wrist, or spine (5.5).
- Cutaneous and Systemic Lupus Erythematosus : Mostly cutaneous, new onset or exacerbation of existing disease; discontinue Rabeprazole Sodium delayed-release tablets and refer to specialist for evaluation (5.6).
- Cyanocobalamin (Vitamin B-12) Deficiency : Daily long-term use (e.g., longer than 3 years) may lead to malabsorption or a deficiency of cyanocobalamin (5.7).
- Hypomagnesemia : Reported rarely with prolonged treatment with PPIs (5.8).
- Interaction with Methotrexate : Concomitant use with PPIs may elevate and/or prolong serum concentrations of methotrexate and/or its metabolite, possibly leading to toxicity. With high dose methotrexate administration, consider a temporary withdrawal of Rabeprazole Sodium delayed-release tablets (5.9, 7).
- Fundic Gland Polyps : Risk increases with long-term use, especially beyond one year. Use the shortest duration of therapy (5.10).

-----**ADVERSE REACTIONS**-----

- Most common adverse reactions in adults (>2%) are pain, pharyngitis, flatulence, infection, and constipation (6.1).
- Most common adverse reactions in adolescents (≥2%) are headache, diarrhea, nausea, vomiting, and abdominal pain (6.1).

To report SUSPECTED ADVERSE REACTIONS, contact Advagen Pharma Ltd, at 888-413-0949 or FDA at 1-800-FDA-1088 or www.fda.gov/medwatch.

-----**DRUG INTERACTIONS**-----

See full prescribing information for a list of clinically important drug interactions (7).

-----**USE IN SPECIFIC POPULATIONS**-----

Pediatric use: Dosage strength not appropriate for patients less than 12 years (2, 8.4).

See 17 for PATIENT COUNSELING INFORMATION and Medication Guide.

Revised: 5/2021

FULL PRESCRIBING INFORMATION: CONTENTS*

1 INDICATIONS AND USAGE

- 1.1 Healing of Erosive or Ulcerative GERD in Adults
- 1.2 Maintenance of Healing of Erosive or Ulcerative GERD in Adults
- 1.3 Treatment of Symptomatic GERD in Adults
- 1.4 Healing of Duodenal Ulcers in Adults
- 1.5 *Helicobacter pylori* Eradication to Reduce the Risk of Duodenal Ulcer Recurrence in Adults
- 1.6 Treatment of Pathological Hypersecretory Conditions, Including Zollinger-Ellison Syndrome in Adults
- 1.7 Treatment of Symptomatic GERD in Adolescent Patients 12 Years of Age and Older

2 DOSAGE AND ADMINISTRATION

3 DOSAGE FORMS AND STRENGTHS

4 CONTRAINDICATIONS

5 WARNINGS AND PRECAUTIONS

- 5.1 Presence of Gastric Malignancy

- 5.2 Interaction with Warfarin
- 5.3 Acute Interstitial Nephritis
- 5.4 *Clostridium difficile*-Associated Diarrhea
- 5.5 Bone Fracture
- 5.6 Cutaneous and Systemic Lupus Erythematosus
- 5.7 Cyanocobalamin (Vitamin B-12) Deficiency
- 5.8 Hypomagnesemia
- 5.9 Interaction with Methotrexate
- 5.10 Fundic Gland Polyps

6 ADVERSE REACTIONS

- 6.1 Clinical Studies Experience
- 6.2 Postmarketing Experience

7 DRUG INTERACTIONS

8 USE IN SPECIFIC POPULATIONS

- 8.1 Pregnancy
- 8.2 Lactation
- 8.4 Pediatric Use
- 8.5 Geriatric Use
- 8.6 Hepatic Impairment

10 OVERDOSAGE

11 DESCRIPTION

12 CLINICAL PHARMACOLOGY

- 12.1 Mechanism of Action
- 12.2 Pharmacodynamics
- 12.3 Pharmacokinetics
- 12.4 Microbiology
- 12.5 Pharmacogenomics

13 NONCLINICAL TOXICOLOGY

- 13.1 Carcinogenesis, Mutagenesis, Impairment of Fertility

14 CLINICAL STUDIES

- 14.1 Healing of Erosive or Ulcerative GERD in Adults
- 14.2 Long-Term Maintenance of Healing of Erosive or Ulcerative GERD in Adults
- 14.3 Treatment of Symptomatic GERD in Adults
- 14.4 Healing of Duodenal Ulcers in Adults
- 14.5 *Helicobacter pylori* Eradication in Patients with Peptic Ulcer Disease or Symptomatic Non-Ulcer Disease in Adults
- 14.6 Pathological Hypersecretory Conditions, Including Zollinger-Ellison Syndrome in Adults

15 REFERENCES

16 HOW SUPPLIED/STORAGE AND HANDLING

17 PATIENT COUNSELING INFORMATION

* Sections or subsections omitted from the full prescribing information are not listed.

FULL PRESCRIBING INFORMATION

1 INDICATIONS AND USAGE

1.1 Healing of Erosive or Ulcerative GERD in Adults

Rabeprazole Sodium delayed-release tablets are indicated for short-term (4 to 8 weeks) treatment in the healing and symptomatic relief of erosive or ulcerative

gastroesophageal reflux disease (GERD). For those patients who have not healed after 8 weeks of treatment, an additional 8-week course of Rabeprazole Sodium delayed-release tablets may be considered.

1.2 Maintenance of Healing of Erosive or Ulcerative GERD in Adults

Rabeprazole Sodium delayed-release tablets are indicated for maintaining healing and reduction in relapse rates of heartburn symptoms in patients with erosive or ulcerative gastroesophageal reflux disease (GERD Maintenance). Controlled studies do not extend beyond 12 months.

1.3 Treatment of Symptomatic GERD in Adults

Rabeprazole Sodium delayed-release tablets are indicated for the treatment of daytime and nighttime heartburn and other symptoms associated with GERD in adults for up to 4 weeks.

1.4 Healing of Duodenal Ulcers in Adults

Rabeprazole Sodium delayed-release tablets are indicated for short-term (up to four weeks) treatment in the healing symptomatic relief of duodenal ulcers. Most patients heal within four weeks.

1.5 *Helicobacter pylori* Eradication to Reduce the Risk of Duodenal Ulcer Recurrence in Adults

Rabeprazole Sodium delayed-release tablets, in combination with amoxicillin and clarithromycin as a three drug regimen, are indicated for the treatment of patients with *H. pylori* infection and duodenal ulcer disease (active or history within the past 5 years) to eradicate *H. pylori*. Eradication of *H. pylori* has been shown to reduce the risk of duodenal ulcer recurrence.

In patients who fail therapy, susceptibility testing should be done. If resistance to clarithromycin is demonstrated or susceptibility testing is not possible, alternative antimicrobial therapy should be instituted [see *Clinical Pharmacology* (12.2) and the full prescribing information for clarithromycin].

1.6 Treatment of Pathological Hypersecretory Conditions, Including Zollinger-Ellison Syndrome in Adults

Rabeprazole Sodium delayed-release tablets are indicated for the long-term treatment of pathological hypersecretory conditions, including Zollinger-Ellison syndrome.

1.7 Treatment of Symptomatic GERD in Adolescent Patients 12 Years of Age and Older

Rabeprazole Sodium delayed-release tablets are indicated for the treatment of symptomatic GERD in adolescents 12 years of age and above for up to 8 weeks.

2 DOSAGE AND ADMINISTRATION

Table 1 shows the recommended dosage of Rabeprazole Sodium delayed-release tablets in adults and adolescent patients 12 years of age and older. The use of Rabeprazole Sodium delayed-release tablets is not recommended for use in pediatric patients 1 year to less than 12 years of age because the lowest available tablet strength (20 mg) exceeds the recommended dose for these patients. Use another rabeprazole formulation for pediatric patients 1 year to less than 12 years of age.

Table 1: Recommended Dosage and Duration of Rabeprazole Sodium Delayed-Release Tablets in Adults and Adolescents 12 Years of Age and Older

| Indication | Dosage of Rabeprazole Sodium Delayed-Release Tablets | Treatment Duration |
|--|---|--|
| Adults | | |
| Healing of Erosive or Ulcerative Gastroesophageal Reflux Disease (GERD) | 20 mg once daily | 4 to 8 weeks* |
| Maintenance of Healing of Erosive or Ulcerative GERD | 20 mg once daily | Controlled studies do not extend beyond 12 months |
| Symptomatic GERD in Adults | 20 mg once daily | Up to 4 weeks** |
| Healing of Duodenal Ulcers | 20 mg once daily after the morning meal | Up to 4 weeks*** |
| <i>Helicobacter pylori</i> Eradication to Reduce the Risk of Duodenal Ulcer Recurrence | Rabeprazole Sodium delayed-release tablets 20 mg Amoxicillin 1000 mg Clarithromycin 500 mg Take all three medications twice daily with morning and evening meals; it is important that patients comply with the full 7- day regimen [See Clinical Studies (14.5)] | 7 days |
| Pathological Hypersecretory Conditions, Including Zollinger-Ellison Syndrome | Starting dose 60 mg once daily then adjust to patient needs; some patients require divided doses Dosages of 100 mg once daily and 60 mg twice daily have been administered | As long as clinically indicated Some patients with Zollinger-Ellison syndrome have been treated continuously for up to one year |
| Adolescents 12 Years of Age and Older | | |
| Symptomatic GERD | 20 mg once daily | Up to 8 weeks |

*For those patients who have not healed after 8 weeks of treatment, an additional 8-week course of Rabeprazole Sodium delayed-release tablets may be considered.

**If symptoms do not resolve completely after 4 weeks, an additional course of treatment may be considered.

***Most patients heal within 4 weeks; some patients may require additional therapy to achieve healing.

Administration Instructions

- Swallow Rabeprazole Sodium delayed-release tablets whole. Do not chew, crush, or split tablets.
- For the treatment of duodenal ulcers take Rabeprazole Sodium delayed-release tablets after a meal.
- For *Helicobacter pylori* eradication take Rabeprazole Sodium delayed-release tablets with food.
- For all other indications Rabeprazole Sodium delayed-release tablets can be taken with or without food.
- Take a missed dose as soon as possible. If it is almost time for the next dose, skip the missed dose and go back to the normal schedule. Do not take two doses at the

same time.

3 DOSAGE FORMS AND STRENGTHS

Rabeprazole Sodium delayed-release tablets are provided in one strength, 20 mg. The tablets are light yellow colored round, biconvex with beveled edges. "B683" is printed on one side with black ink and plain on other side.

4 CONTRAINDICATIONS

- Rabeprazole Sodium delayed-release tablets are contraindicated in patients with known hypersensitivity to rabeprazole, substituted benzimidazoles, or to any component of the formulation. Hypersensitivity reactions may include anaphylaxis, anaphylactic shock, angioedema, bronchospasm, acute interstitial nephritis, and urticaria [see *Adverse Reactions (6)*].
- PPIs, including Rabeprazole Sodium delayed-release tablets, are contraindicated with rilpivirine-containing products [see *Drug Interactions (7)*].
- For information about contraindications of antibacterial agents (clarithromycin and amoxicillin) indicated in combination with Rabeprazole Sodium delayed-release tablets, refer to the *Contraindications* section of their package inserts.

5 WARNINGS AND PRECAUTIONS

5.1 Presence of Gastric Malignancy

In adults, symptomatic response to therapy with Rabeprazole Sodium delayed-release tablets does not preclude the presence of gastric malignancy. Consider additional follow-up and diagnostic testing in adult patients who have a suboptimal response or an early symptomatic relapse after completing treatment with a PPI.

5.2 Interaction with Warfarin

Steady state interactions of rabeprazole and warfarin have not been adequately evaluated in patients. There have been reports of increased INR and prothrombin time in patients receiving a proton pump inhibitor and warfarin concomitantly. Increases in INR and prothrombin time may lead to abnormal bleeding and even death. Patients treated with Rabeprazole Sodium delayed-release tablets and warfarin concomitantly may need to be monitored for increases in INR and prothrombin time [see *Drug Interactions (7)*].

5.3 Acute Interstitial Nephritis

Acute interstitial nephritis has been observed in patients taking PPIs including Rabeprazole Sodium delayed-release tablets. Acute interstitial nephritis may occur at any point during PPI therapy and is generally attributed to an idiopathic hypersensitivity reaction. Discontinue Rabeprazole Sodium delayed-release tablets if acute interstitial nephritis develops [see *Contraindications (4)*].

5.4 *Clostridium difficile*-Associated Diarrhea

Published observational studies suggest that PPI therapy like Rabeprazole Sodium delayed-release tablets may be associated with an increased risk of *Clostridium difficile*-associated diarrhea, especially in hospitalized patients. This diagnosis should be considered for diarrhea that does not improve [see *Adverse Reactions (6.2)*].

Patients should use the lowest dose and shortest duration of PPI therapy appropriate to the condition being treated.

Clostridium difficile-associated diarrhea (CDAD) has been reported with use of nearly all antibacterial agents. For more information specific to antibacterial agents (clarithromycin and amoxicillin) indicated for use in combination with Rabeprazole Sodium delayed-release tablets, refer to *Warnings and Precautions* sections of the corresponding prescribing information

5.5 Bone Fracture

Several published observational studies in adults suggest that PPI therapy may be associated with an increased risk for osteoporosis-related fractures of the hip, wrist, or spine. The risk of fracture was increased in patients who received high-dose, defined as multiple daily doses, and long-term PPI therapy (a year or longer). Patients should use the lowest dose and shortest duration of PPI therapy appropriate to the condition being treated. Patients at risk for osteoporosis-related fractures should be managed according to established treatment guidelines [see *Dosage and Administration* (2), *Adverse Reactions* (6.2)] .

5.6 Cutaneous and Systemic Lupus Erythematosus

Cutaneous lupus erythematosus (CLE) and systemic lupus erythematosus (SLE) have been reported in patients taking PPIs, including rabeprazole. These events have occurred as both new onset and an exacerbation of existing autoimmune disease. The majority of PPI-induced lupus erythematosus cases were CLE.

The most common form of CLE reported in patients treated with PPIs was subacute CLE (SCLE) and occurred within weeks to years after continuous drug therapy in patients ranging from infants to the elderly. Generally, histological findings were observed without organ involvement.

Systemic lupus erythematosus (SLE) is less commonly reported than CLE in patients receiving PPIs. PPI associated SLE is usually milder than non-drug induced SLE. Onset of SLE typically occurred within days to years after initiating treatment primarily in patients ranging from young adults to the elderly. The majority of patients presented with rash; however, arthralgia and cytopenia were also reported.

Avoid administration of PPIs for longer than medically indicated. If signs or symptoms consistent with CLE or SLE are noted in patients receiving Rabeprazole Sodium delayed-release tablets, discontinue the drug and refer the patient to the appropriate specialist for evaluation. Most patients improve with discontinuation of the PPI alone in 4 to 12 weeks. Serological testing (e.g. ANA) may be positive and elevated serological test results may take longer to resolve than clinical manifestations.

5.7 Cyanocobalamin (Vitamin B-12) Deficiency

Daily treatment with any acid-suppressing medications over a long period of time (e.g., longer than 3 years) may lead to malabsorption of cyanocobalamin (vitamin B-12) caused by hypo- or achlorhydria. Rare reports of cyanocobalamin deficiency occurring with acid-suppressing therapy have been reported in the literature. This diagnosis should be considered if clinical symptoms consistent with cyanocobalamin deficiency are observed in patients treated with Rabeprazole Sodium delayed-release tablets.

5.8 Hypomagnesemia

Hypomagnesemia, symptomatic and asymptomatic, has been reported rarely in patients treated with PPIs for at least three months, in most cases after a year of therapy. Serious adverse events include tetany, arrhythmias, and seizures. In most patients, treatment of hypomagnesemia required magnesium replacement and discontinuation of

the PPI.

For patients expected to be on prolonged treatment or who take PPIs with medications such as digoxin or drugs that may cause hypomagnesemia (e.g., diuretics), healthcare professionals may consider monitoring magnesium levels prior to initiation of PPI treatment and periodically [see *Adverse Reactions (6.2)*].

5.9 Interaction with Methotrexate

Literature suggests that concomitant use of PPIs with methotrexate (primarily at high dose; see *methotrexate prescribing information*) may elevate and prolong serum concentrations of methotrexate and/or its metabolite, possibly leading to methotrexate toxicities. In high-dose methotrexate administration, a temporary withdrawal of the PPI may be considered in some patients [see *Drug Interactions (7)*].

5.10 Fundic Gland Polyps

PPI use is associated with an increased risk of fundic gland polyps that increases with long-term use, especially beyond one year. Most PPI users who developed fundic gland polyps were asymptomatic and fundic gland polyps were identified incidentally on endoscopy. Use the shortest duration of PPI therapy appropriate to the condition being treated.

6 ADVERSE REACTIONS

The following serious adverse reactions are described below and elsewhere in labeling:

- Acute Interstitial Nephritis [see *Warnings and Precautions (5.3)*]
- *Clostridium difficile* -Associated Diarrhea [see *Warnings and Precautions (5.4)*]
- Bone Fracture [see *Warnings and Precautions (5.5)*]
- Cutaneous and Systemic Lupus Erythematosus [see *Warnings and Precautions (5.6)*]
- Cyanocobalamin (Vitamin B-12) Deficiency [see *Warnings and Precautions (5.7)*]
- Hypomagnesemia [see *Warnings and Precautions (5.8)*]
- Fundic Gland Polyps [see *Warnings and Precautions (5.10)*]

6.1 Clinical Studies Experience

Because clinical trials are conducted under varying conditions, adverse reaction rates observed in the clinical trials of a drug cannot be directly compared to rates in the clinical trials of another drug and may not reflect the rates observed in practice.

Adults

The data described below reflect exposure to Rabeprazole Sodium delayed-release tablets in 1064 adult patients exposed for up to 8 weeks. The studies were primarily placebo- and active-controlled trials in adult patients with Erosive or Ulcerative Gastroesophageal Reflux Disease (GERD), Duodenal Ulcers and Gastric Ulcers. The population had a mean age of 53 years (range 18-89 years) and had a ratio of approximately 60% male: 40% female. The racial distribution was 86% Caucasian, 8% African American, 2% Asian, and 5% other. Most patients received either 10 mg, 20 mg or 40 mg per day of Rabeprazole Sodium delayed-release tablets.

An analysis of adverse reactions appearing in $\geq 2\%$ of patients treated with Rabeprazole Sodium delayed-release tablets (n=1064) and with a greater frequency than placebo (n=89) in controlled North American and European acute treatment trials, revealed the following adverse reactions: pain (3% vs. 1%), pharyngitis (3% vs. 2%), flatulence (3% vs. 1%), infection (2% vs. 1%), and constipation (2% vs. 1%).

Three long-term maintenance studies consisted of a total of 740 adult patients; at least 54% of adult patients were exposed to Rabeprazole Sodium delayed-release tablets for 6 months and at least 33% were exposed for 12 months. Of the 740 adult patients, 247 (33%) and 241 (33%) patients received 10 mg and 20 mg of Rabeprazole Sodium delayed-release tablets, respectively, while 169 (23%) patients received placebo and 83 (11%) received omeprazole.

The safety profile of rabeprazole in the maintenance studies in adults was consistent with what was observed in the acute studies.

Less common adverse reactions seen in controlled clinical trials (<2% of patients treated with Rabeprazole Sodium delayed-release tablets and greater than placebo) and for which there is a possibility of a causal relationship to rabeprazole, include the following: headache, abdominal pain, diarrhea, dry mouth, dizziness, peripheral edema, hepatic enzyme increase, hepatitis, hepatic encephalopathy, myalgia, and arthralgia.

Combination Treatment with Amoxicillin and Clarithromycin: In clinical trials using combination therapy with rabeprazole plus amoxicillin and clarithromycin (RAC), no adverse reactions unique to this drug combination were observed. In the U.S. multicenter study, the most frequently reported drug related adverse reactions for patients who received RAC therapy for 7 or 10 days were diarrhea (8% and 7%) and taste perversion (6% and 10%), respectively.

No clinically significant laboratory abnormalities particular to the drug combinations were observed.

For more information on adverse reactions or laboratory changes with amoxicillin or clarithromycin, refer to their respective prescribing information, *Adverse Reactions* section.

Pediatrics

In a multicenter, open-label study of adolescent patients 12 to 16 years of age with a clinical diagnosis of symptomatic GERD or endoscopically proven GERD, the adverse event profile was similar to that of adults. The adverse reactions reported without regard to relationship to Rabeprazole Sodium delayed-release tablets that occurred in $\geq 2\%$ of 111 patients were headache (9.9%), diarrhea (4.5%), nausea (4.5%), vomiting (3.6%), and abdominal pain (3.6%). The related reported adverse reactions that occurred in $\geq 2\%$ of patients were headache (5.4%) and nausea (1.8%). There were no adverse reactions reported in this study that were not previously observed in adults.

6.2 Postmarketing Experience

The following adverse reactions have been identified during post approval use of rabeprazole. Because these reactions are reported voluntarily from a population of uncertain size, it is not always possible to reliably estimate their frequency or establish a causal relationship to drug exposure:

Blood and Lymphatic System Disorders: agranulocytosis, hemolytic anemia, leukopenia, pancytopenia, thrombocytopenia

Ear and Labyrinth Disorders: vertigo

Eye Disorders: blurred vision

Gastrointestinal Disorders: fundic gland polyps

General Disorders and Administration Site Conditions: sudden death

Hepatobiliary Disorders: jaundice

Immune System Disorders: anaphylaxis, angioedema, systemic lupus erythematosus,

Stevens-Johnson syndrome, toxic epidermal necrolysis (some fatal)

Infections and Infestations: Clostridium difficile-associated diarrhea

Investigations: Increases in prothrombin time/INR (in patients treated with concomitant warfarin), TSH elevations

Metabolism and Nutrition Disorders: hyperammonemia, hypomagnesemia

Musculoskeletal System Disorders: bone fracture, rhabdomyolysis

Nervous System Disorders: coma

Psychiatric Disorders: delirium, disorientation

Renal and Urinary Disorders: interstitial nephritis

Respiratory, Thoracic and Mediastinal Disorders: interstitial pneumonia

Skin and Subcutaneous Tissue Disorders: severe dermatologic reactions including bullous and other drug eruptions of the skin, cutaneous lupus erythematosus, erythema multiforme

7 DRUG INTERACTIONS

Table 2 includes drugs with clinically important drug interactions and interaction with diagnostics when administered concomitantly with Rabeprazole Sodium delayed-release tablets and instructions for preventing or managing them.

Consult the labeling of concomitantly used drugs to obtain further information about interactions with PPIs.

Table 2: Clinically Relevant Interactions Affecting Drugs Co-Administered with Rabeprazole Sodium Delayed-Release Tablets and Interactions with Diagnostics

| Antiretrovirals | |
|-------------------------|--|
| <i>Clinical Impact:</i> | <p>The effect of PPI on antiretroviral drugs is variable. The clinical importance and the mechanisms behind these interactions are not always known.</p> <ul style="list-style-type: none">• Decreased exposure of some antiretroviral drugs (e.g., rilpivirine, atazanavir, and nelfinavir) when used concomitantly with rabeprazole may reduce antiviral effect and promote the development of drug resistance.• Increased exposure of other antiretroviral drugs (e.g., saquinavir) when used concomitantly with rabeprazole may increase toxicity.• There are other antiretroviral drugs which do not result in clinically relevant interactions with rabeprazole. |
| <i>Intervention:</i> | <p><u>Rilpivirine-containing products:</u> Concomitant use with Rabeprazole Sodium delayed-release tablets is contraindicated [see <i>Contraindications (4)</i>]. See prescribing</p> |

| | |
|--|---|
| | <p>information</p> <p><u>Atazanavir</u>: See prescribing information for atazanavir for dosing information</p> <p><u>Nelfinavir</u>: Avoid concomitant use with Rabeprazole Sodium delayed-release tablets. See prescribing information for nelfinavir</p> <p><u>Saquinavir</u>: See the prescribing information for saquinavir and monitor for potential saquinavir toxicities</p> <p><u>Other antiretrovirals</u>: See prescribing information.</p> |
| Warfarin | |
| <i>Clinical Impact:</i> | Increased INR and prothrombin time in patients receiving PPIs, including rabeprazole, and warfarin concomitantly. Increases in INR and prothrombin time may lead to abnormal bleeding and even death [see <i>Warnings and Precautions (5.2)</i>]. |
| <i>Intervention:</i> | Monitor INR and prothrombin time. Dose adjustment of warfarin may be needed to maintain target INR range. See prescribing information for warfarin. |
| Methotrexate | |
| <i>Clinical Impact:</i> | Concomitant use of rabeprazole with methotrexate (primarily at high dose) may elevate and prolong serum levels of methotrexate and/or its metabolite hydroxymethotrexate, possibly leading to methotrexate toxicities. No formal drug interaction studies of methotrexate with PPIs have been conducted [see <i>Warnings and Precautions (5.9)</i>]. |
| <i>Intervention:</i> | A temporary withdrawal of Rabeprazole Sodium delayed-release tablets may be considered in some patients receiving high dose methotrexate administration. |
| Digoxin | |
| <i>Clinical Impact:</i> | Potential for increased exposure of digoxin [see <i>Clinical Pharmacology (12.3)</i>]. |
| <i>Intervention:</i> | Monitor digoxin concentrations. Dose adjustment of digoxin may be needed to maintain therapeutic drug concentrations. See prescribing information for digoxin. |
| Drugs Dependent on Gastric pH for Absorption (e.g., iron salts, erlotinib, dasatinib, nilotinib, mycophenolate mofetil, ketoconazole, itraconazole) | |
| <i>Clinical Impact:</i> | Rabeprazole can reduce the absorption of drugs due to its effect on reducing intragastric acidity. |
| <i>Intervention:</i> | Mycophenolate mofetil (MMF): Co-administration of PPIs in healthy subjects and in transplant patients receiving MMF has been reported to reduce the exposure |

to the active metabolite, mycophenolic acid (MPA), possibly due to a decrease in MMF solubility at an increased gastric pH. The clinical relevance of reduced MPA exposure on organ rejection has not been established in transplant patients receiving Rabeprazole Sodium delayed-release tablets and MMF. Use Rabeprazole Sodium delayed-release tablets with caution in transplant patients receiving MMF. See the prescribing information for other drugs dependent on gastric pH for absorption.

Combination Therapy with Clarithromycin and Amoxicillin

Clinical Impact: Concomitant administration of clarithromycin with other drugs can lead to serious adverse reactions, including potentially fatal arrhythmias, and are contraindicated. Amoxicillin also has drug interactions.

Intervention: See *Contraindications* and *Warnings and Precautions* in prescribing information for clarithromycin
See *Drug Interactions* in prescribing information for amoxicillin.

Tacrolimus

Clinical Impact Potentially increased exposure of tacrolimus, especially in transplant patients who are intermediate or poor metabolizers of CYP2C19

Intervention: Monitor tacrolimus whole blood trough concentrations. Dose adjustment of tacrolimus may be needed to maintain therapeutic drug concentrations. See prescribing information for tacrolimus.

Interactions with Investigations of Neuroendocrine Tumors

Clinical Impact: Serum chromogranin A (CgA) levels increase secondary to PPI-induced decreases in gastric acidity. The increased CgA level may cause false positive results in diagnostic investigations for neuroendocrine tumors

Intervention Temporarily stop Rabeprazole Sodium delayed-release tablets treatment at least 14 days before assessing CgA levels and consider repeating the test if initial CgA levels are high. If serial tests are performed (e.g. for monitoring), the same commercial laboratory should be used for testing, as reference ranges between tests may vary.

Interaction with Secretin Stimulation Test

| | |
|---|---|
| <i>Clinical Impact:</i> | Hyper-response in gastrin secretion in response to secretin stimulation test, falsely suggesting gastrinoma. |
| <i>Intervention</i> | Temporarily stop treatment with Rabeprazole Sodium delayed-release tablets at least 14 days before assessing to allow gastrin levels to return to baseline. |
| False Positive Urine Tests for THC | |
| <i>Clinical Impact:</i> | There have been reports of false positive urine screening tests for tetrahydrocannabinol (THC) in patients receiving PPIs. |
| <i>Intervention</i> | An alternative confirmatory method should be considered to verify positive results. |

8 USE IN SPECIFIC POPULATIONS

8.1 Pregnancy

Risk Summary

There are no available human data on Rabeprazole Sodium delayed-release tablets use in pregnant women to inform the drug associated risk. The background risk of major birth defects and miscarriage for the indicated populations are unknown. However, the background risk in the U.S. general population of major birth defects is 2 to 4% and of miscarriage is 15 to 20% of clinically recognized pregnancies. No evidence of adverse developmental effects were seen in animal reproduction studies with rabeprazole administered during organogenesis at 13 and 8 times the human area under the plasma concentration-time curve (AUC) at the recommended dose for GERD, in rats and rabbits, respectively [see Data].

Changes in bone morphology were observed in offspring of rats treated with oral doses of a different PPI through most of pregnancy and lactation. When maternal administration was confined to gestation only, there were no effects on bone physal morphology in the offspring at any age [see Data].

Data

Animal Data

Embryo-fetal developmental studies have been performed in rats during organogenesis at intravenous doses of rabeprazole up to 50 mg/kg/day (plasma AUC of 11.8 µg•hr/mL, about 13 times the human exposure at the recommended oral dose for GERD) and rabbits at intravenous doses up to 30 mg/kg/day (plasma AUC of 7.3 µg•hr/mL, about 8 times the human exposure at the recommended oral dose for GERD) and have revealed no evidence of harm to the fetus due to rabeprazole.

Administration of rabeprazole to rats in late gestation and during lactation at an oral dose of 400 mg/kg/day (about 195-times the human oral dose based on mg/m²) resulted in decreases in body weight gain of the pups.

A pre- and postnatal developmental toxicity study in rats with additional endpoints to evaluate bone development was performed with a different PPI at about 3.4 to 57 times an oral human dose on a body surface area basis. Decreased femur length, width and thickness of cortical bone, decreased thickness of the tibial growth plate, and minimal to mild bone marrow hypocellularity were noted at doses of this PPI equal to or greater than 3.4 times an oral human dose on a body surface area basis. Physal dysplasia in

the femur was also observed in offspring after in utero and lactational exposure to the PPI at doses equal to or greater than 33.6 times an oral human dose on a body surface area basis. Effects on maternal bone were observed in pregnant and lactating rats in a pre- and postnatal toxicity study when the PPI was administered at oral doses of 3.4 to 57 times an oral human dose on a body surface area basis. When rats were dosed from gestational day 7 through weaning on postnatal day 21, a statistically significant decrease in maternal femur weight of up to 14% (as compared to placebo treatment) was observed at doses equal to or greater than 33.6 times an oral human dose on a body surface area basis.

A follow-up developmental toxicity study in rats with further time points to evaluate pup bone development from postnatal day 2 to adulthood was performed with a different PPI at oral doses of 280 mg/kg/day (about 68 times an oral human dose on a body surface area basis) where drug administration was from either gestational day 7 or gestational day 16 until parturition. When maternal administration was confined to gestation only, there were no effects on bone physal morphology in the offspring at any age.

8.2 Lactation

Risk Summary

Lactation studies have not been conducted to assess the presence of rabeprazole in human milk, the effects of rabeprazole on the breastfed infant, or the effects of rabeprazole on milk production. Rabeprazole is present in rat milk. The development and health benefits of breastfeeding should be considered along with the mother's clinical need for Rabeprazole Sodium delayed-release tablets and any potential adverse effects on the breastfed infant from Rabeprazole Sodium delayed-release tablets or from the underlying maternal condition.

8.4 Pediatric Use

The safety and effectiveness of Rabeprazole Sodium delayed-release tablets have been established in pediatric patients for adolescent patients 12 years of age and older for the treatment of symptomatic GERD. Use of Rabeprazole Sodium delayed-release tablets in this age group is supported by adequate and well controlled studies in adults and a multicenter, randomized, open-label, parallel-group study in 111 adolescent patients 12 to 16 years of age. Patients had a clinical diagnosis of symptomatic GERD, or suspected or endoscopically proven GERD and were randomized to either 10 mg or 20 mg once daily for up to 8 weeks for the evaluation of safety and efficacy. The adverse reaction profile in adolescent patients was similar to that of adults. The related reported adverse reactions that occurred in $\geq 2\%$ of patients were headache (5%) and nausea (2%). There were no adverse reactions reported in these studies that were not previously observed in adults.

The safety and effectiveness of Rabeprazole Sodium delayed-release tablets have not been established in pediatric patients for:

- Healing of Erosive or Ulcerative GERD
- Maintenance of Healing of Erosive or Ulcerative GERD
- Treatment of Symptomatic GERD
- Healing of Duodenal Ulcers
- *Helicobacter pylori* Eradication to Reduce the Risk of Duodenal Ulcer Recurrence
- Treatment of Pathological Hypersecretory Conditions, Including Zollinger-Ellison Syndrome

Rabeprazole Sodium delayed-release 20 mg tablets are not recommended for use in pediatric patients less than 12 years of age because the tablet strength exceeds the

recommended dose for these patients [see *Dosage and Administration (2)*]. For pediatric patients 1 year to less than 12 years of age consider another rabeprazole formulation. The safety and effectiveness of a different dosage form and dosage strength of rabeprazole has been established in pediatric patients 1 to 11 years for the treatment of GERD.

Juvenile Animal Data

Studies in juvenile and young adult rats and dogs were performed. In juvenile animal studies rabeprazole sodium was administered orally to rats for up to 5 weeks and to dogs for up to 13 weeks, each commencing on Day 7 post-partum and followed by a 13-week recovery period. Rats were dosed at 5, 25, or 150 mg/kg/day and dogs were dosed at 3, 10, or 30 mg/kg/day. The data from these studies were comparable to those reported for young adult animals. Pharmacologically mediated changes, including increased serum gastrin levels and stomach changes, were observed at all dose levels in both rats and dogs. These observations were reversible over the 13-week recovery periods. Although body weights and/or crown-rump lengths were minimally decreased during dosing, no effects on the development parameters were noted in either juvenile rats or dogs.

When juvenile animals were treated for 28 days with a different PPI at doses equal to or greater than 34 times the daily oral human dose on a body surface area basis, overall growth was affected and treatment-related decreases in body weight (approximately 14%) and body weight gain, and decreases in femur weight and femur length were observed.

8.5 Geriatric Use

Of the total number of subjects (n=2009) in clinical studies of Rabeprazole Sodium delayed-release tablets, 19% were 65 years and over, while 4% were 75 years and over. No overall differences in safety or effectiveness were observed between these subjects and younger subjects, and other reported clinical experience has not identified differences in responses between the elderly and younger patients, but greater sensitivity of some older individuals cannot be ruled out.

8.6 Hepatic Impairment

Administration of Rabeprazole Sodium delayed-release tablets to patients with mild to moderate hepatic impairment (Child-Pugh Class A and B, respectively) resulted in increased exposure and decreased elimination [see *Clinical Pharmacology (12.3)*]. No dosage adjustment is necessary in patients with mild to moderate hepatic impairment. There is no information in patients with severe hepatic impairment (Child-Pugh Class C). Avoid use of Rabeprazole Sodium delayed-release tablets in patients with severe hepatic impairment; however, if treatment is necessary, monitor patients for adverse reactions [see *Warnings and Precautions (5), Adverse Reactions (6)*].

10 OVERDOSAGE

Seven reports of accidental overdosage with rabeprazole have been received. The maximum reported overdose was 80 mg. There were no clinical signs or symptoms associated with any reported overdose. Patients with Zollinger-Ellison syndrome have been treated with up to 120 mg rabeprazole once daily. No specific antidote for rabeprazole is known. Rabeprazole is extensively protein bound and is not readily dialyzable.

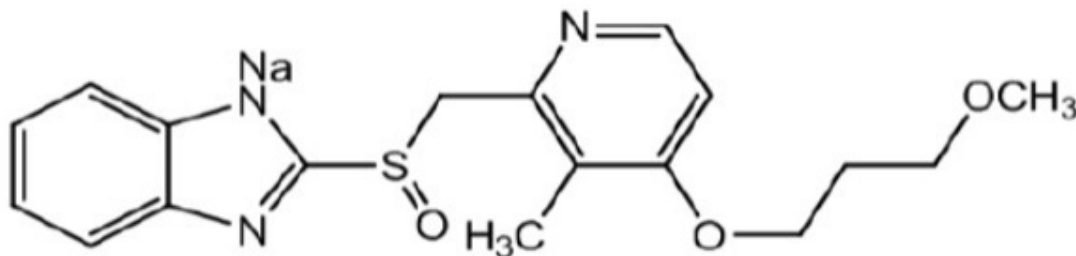
In the event of overdosage, treatment should be symptomatic and supportive.

If over-exposure occurs, call your Poison Control Center at 1-800-222-1222 for current

information on the management of poisoning or overdose.

11 DESCRIPTION

The active ingredient in Rabeprazole Sodium delayed-release tablets is rabeprazole sodium, which is a proton pump inhibitor. It is a substituted benzimidazole known chemically as 2-[[[4-(3-methoxypropoxy)-3-methyl-2-pyridinyl]-methyl]sulfinyl]-1 *H*-benzimidazole sodium salt. It has an empirical formula of $C_{18}H_{20}N_3NaO_3S$ and a molecular weight of 381.42. Rabeprazole sodium is an off white to yellowish white powder. It is very soluble in water and methanol, freely soluble in ethanol, chloroform and ethyl acetate and insoluble in ether and n-hexane. The stability of rabeprazole sodium is a function of pH; it is rapidly degraded in acid media, and is more stable under alkaline conditions. The structural figure is:



Rabeprazole Sodium delayed-release tablets are available for oral administration as delayed-release, enteric-coated tablets containing 20 mg of rabeprazole sodium.

Inactive ingredients of the 20 mg tablet are diacetylated monoglycerides, ethylcellulose, hydroxypropyl cellulose, hypromellose phthalate, light magnesium oxide, low substituted hydroxypropyl cellulose, magnesium stearate, mannitol, talc, and titanium dioxide. Iron oxide yellow is the coloring agent for the tablet coating. The ink pigment contains ammonium hydroxide, black iron oxide, propylene glycol, and shellac glaze (modified) in SD-45.

12 CLINICAL PHARMACOLOGY

12.1 Mechanism of Action

Rabeprazole belongs to a class of antisecretory compounds (substituted benzimidazole proton-pump inhibitors) that do not exhibit anticholinergic or histamine H_2 -receptor antagonist properties, but suppress gastric acid secretion by inhibiting the gastric H^+ , K^+ ATPase at the secretory surface of the gastric parietal cell. Because this enzyme is regarded as the acid (proton) pump within the parietal cell, rabeprazole has been characterized as a gastric proton-pump inhibitor. Rabeprazole blocks the final step of gastric acid secretion.

In gastric parietal cells, rabeprazole is protonated, accumulates, and is transformed to an active sulfenamide. When studied *in vitro*, rabeprazole is chemically activated at pH 1.2 with a half-life of 78 seconds. It inhibits acid transport in porcine gastric vesicles with a half-life of 90 seconds.

12.2 Pharmacodynamics

Antisecretory Activity

The antisecretory effect begins within one hour after oral administration of 20 mg Rabeprazole Sodium delayed-release tablets. The median inhibitory effect of rabeprazole on 24 hour gastric acidity is 88% of maximal after the first dose. A 20 mg dose of Rabeprazole Sodium delayed-release tablets inhibits basal and peptone meal-stimulated acid secretion versus placebo by 86% and 95%, respectively, and increases the percent of a 24-hour period that the gastric pH>3 from 10% to 65% (see table below). This relatively prolonged pharmacodynamic action compared to the short pharmacokinetic half-life (1 to 2 hours) reflects the sustained inactivation of the H⁺, K⁺ ATPase.

Table 3: Gastric Acid Parameters: Rabeprazole Sodium Delayed-Release Tablets versus Placebo after 7 Days of Once Daily Dosing

| Parameter | Rabeprazole Sodium Delayed-Release Tablets (20 mg once daily) | Placebo |
|----------------------------------|---|---------|
| Basal Acid Output (mmol/hr) | 0.4 * | 2.8 |
| Stimulated Acid Output (mmol/hr) | 0.6 * | 13.3 |
| %Time Gastric pH>3 | 65 * | 10 |

* (p<0.01 versus placebo)

Compared to placebo, 10 mg, 20 mg, and 40 mg of Rabeprazole Sodium delayed-release tablets, administered once daily for 7 days significantly decreased intragastric acidity with all doses for each of four meal-related intervals and the 24-hour time period overall. In this study, there were no statistically significant differences between doses; however, there was a significant dose-related decrease in intragastric acidity. The ability of rabeprazole to cause a dose-related decrease in mean intragastric acidity is illustrated below.

Table 4: AUC Acidity (Mmol-Hr/L): Rabeprazole Sodium Delayed-Release Tablets versus Placebo on Day 7 of Once Daily Dosing (Mean±SD)

| AUC interval (hrs) | Rabeprazole Sodium Delayed-Release Tablets | | | Placebo (N=24) |
|--------------------|--|--------------|--------------|----------------|
| | 10 mg (N=24) | 20 mg (N=24) | 40 mg (N=24) | |
| 08:00-13:00 | 19.6±21.5 * | 12.9±23 * | 7.6±14.7 * | 91.1±39.7 |
| 13:00-19:00 | 5.6±9.7 * | 8.3±29.8 * | 1.3±5.2 * | 95.5±48.7 |
| 19:00-22:00 | 0.1±0.1 * | 0.1±0.06 * | 0.0±0.02 * | 11.9±12.5 |
| 22:00-08:00 | 129.2±84 * | 109.6±67.2 * | 76.9±58.4 * | 479.9±165 |
| AUC 0-24 hours | 155.5±90.6 * | 130.9±81 * | 85.8±64.3 * | 678.5±216 |

* (p<0.001 versus placebo)

After administration of 20 mg Rabeprazole Sodium delayed-release tablets once daily for eight days, the mean percent of time that gastric pH greater than 3 or gastric pH greater than 4 after a single dose (Day 1) and multiple doses (Day 8) was significantly greater than placebo (see table below). The decrease in gastric acidity and the increase in gastric pH observed with 20 mg Rabeprazole Sodium delayed-release tablets administered once daily for eight days were compared to the same parameters for placebo, as illustrated below:

Table 5: Gastric Acid Parameters Rabeprazole Sodium Delayed-Release Tablets Once Daily Dosing versus Placebo on Day 1 and Day 8

| Parameter | Rabeprazole Sodium Delayed-Release Tablets 20 mg once daily | | Placebo | |
|--|---|---------|---------|-------|
| | Day 1 | Day 8 | Day 1 | Day 8 |
| Mean AUC ₀₋₂₄ Acidity | 340.8 * | 176.9 * | 925.5 | 862.4 |
| Median trough pH (23-hr) ^a | 3.77 | 3.51 | 1.27 | 1.38 |
| %Time Gastric pH greater than 3 ^b | 54.6 * | 68.7 * | 19.1 | 21.7 |
| %Time Gastric pH greater than 4 ^b | 44.1 * | 60.3 * | 7.6 | 11.0 |

^a No inferential statistics conducted for this parameter.

^b Gastric pH was measured every hour over a 24-hour period.

* (p<0.001 versus placebo)

Effects on Esophageal Acid Exposure

In patients with GERD and moderate to severe esophageal acid exposure, a dose of 20 mg and 40 mg per day of Rabeprazole Sodium delayed-release tablets decreased 24-hour esophageal acid exposure. After seven days of treatment, the percentage of time that esophageal pH was less than 4 decreased from baselines of 24.7% for 20 mg and 23.7% for 40 mg, to 5.1% and 2.0%, respectively. Normalization of 24-hour intraesophageal acid exposure was correlated to gastric pH greater than 4 for at least 35% of the 24-hour period; this level was achieved in 90% of subjects receiving Rabeprazole Sodium delayed-release tablets 20 mg and in 100% of subjects receiving Rabeprazole Sodium delayed-release tablets 40 mg. With Rabeprazole Sodium delayed-release tablets 20 mg and 40 mg per day, significant effects on gastric and esophageal pH were noted after one day of treatment, and more pronounced after seven days of treatment.

Effects on Serum Gastrin

The median fasting gastrin level increased in a dose-related manner in patients treated once daily with Rabeprazole Sodium delayed-release tablets for up to eight weeks for ulcerative or erosive esophagitis and in patients treated for up to 52 weeks to prevent recurrence of disease. The group median values stayed within the normal range.

In a group of subjects treated with 20 mg Rabeprazole Sodium delayed-release tablets for 4 weeks a doubling of mean serum gastrin concentrations was observed. Approximately 35% of these treated subjects developed serum gastrin concentrations above the upper limit of normal.

Effects on Enterochromaffin-like (ECL) Cells

Increased serum gastrin secondary to antisecretory agents stimulates proliferation of gastric ECL cells which, over time, may result in ECL cell hyperplasia in rats and mice and gastric carcinoids in rats, especially in females [see *Nonclinical Toxicology (13.1)*].

In over 400 patients treated with Rabeprazole Sodium delayed-release tablets (10 or 20 mg) once daily for up to one year, the incidence of ECL cell hyperplasia increased with time and dose, which is consistent with the pharmacological action of the proton-pump inhibitor. No patient developed the adenomatoid, dysplastic or neoplastic changes of ECL cells in the gastric mucosa. No patient developed the carcinoid tumors observed in rats.

Endocrine Effects

Studies in humans for up to one year have not revealed clinically significant effects on the endocrine system. In healthy male subjects treated with Rabeprazole Sodium delayed-release tablets for 13 days, no clinically relevant changes have been detected in the following endocrine parameters examined: 17β -estradiol, thyroid stimulating hormone, tri-iodothyronine, thyroxine, thyroxine-binding protein, parathyroid hormone, insulin, glucagon, renin, aldosterone, follicle-stimulating hormone, luteotrophic hormone, prolactin, somatotrophic hormone, dehydroepiandrosterone, cortisol-binding globulin, and urinary 6β -hydroxycortisol, serum testosterone and circadian cortisol profile.

Other Effects

In humans treated with Rabeprazole Sodium delayed-release tablets for up to one year, no systemic effects have been observed on the central nervous, lymphoid, hematopoietic, renal, hepatic, cardiovascular, or respiratory systems. No data are available on long-term treatment with Rabeprazole Sodium delayed-release tablets and ocular effects.

12.3 Pharmacokinetics

After oral administration of 20 mg Rabeprazole Sodium delayed-release tablets, peak plasma concentrations (C_{max}) of rabeprazole occur over a range of 2 to 5 hours (T_{max}). The rabeprazole C_{max} and AUC are linear over an oral dose range of 10 mg to 40 mg. There is no appreciable accumulation when doses of 10 mg to 40 mg are administered every 24 hours; the pharmacokinetics of rabeprazole is not altered by multiple dosing.

Absorption

Absolute bioavailability for a 20 mg oral tablet of rabeprazole (compared to intravenous administration) is approximately 52%. When Rabeprazole Sodium delayed-release tablets are administered with a high fat meal, T_{max} is variable; which concomitant food intake may delay the absorption up to 4 hours or longer. However, the C_{max} and the extent of rabeprazole absorption (AUC) are not significantly altered. Thus Rabeprazole Sodium delayed-release tablets may be taken without regard to timing of meals.

Distribution

Rabeprazole is 96.3% bound to human plasma proteins.

Elimination

Metabolism: Rabeprazole is extensively metabolized. A significant portion of rabeprazole is metabolized via systemic nonenzymatic reduction to a thioether compound.

Rabeprazole is also metabolized to sulphone and desmethyl compounds via cytochrome P450 in the liver. The thioether and sulphone are the primary metabolites measured in human plasma. These metabolites were not observed to have significant antisecretory activity. *In vitro* studies have demonstrated that rabeprazole is metabolized in the liver primarily by cytochromes P450 3A (CYP3A) to a sulphone metabolite and cytochrome P450 2C19 (CYP2C19) to desmethyl rabeprazole. CYP2C19 exhibits a known genetic polymorphism due to its deficiency in some sub-populations (e.g., 3 to 5% of Caucasians and 17 to 20% of Asians). Rabeprazole metabolism is slow in these sub-populations, therefore, they are referred to as poor metabolizers of the drug.

Excretion: Following a single 20 mg oral dose of ^{14}C -labeled rabeprazole, approximately 90% of the drug was eliminated in the urine, primarily as thioether carboxylic acid; its glucuronide, and mercapturic acid metabolites. The remainder of the dose was recovered in the feces. Total recovery of radioactivity was 99.8%. No unchanged

rabeprazole was recovered in the urine or feces.

Specific Populations

Geriatric Population: In 20 healthy elderly subjects administered 20 mg Rabeprazole Sodium delayed-release tablets once daily for seven days, AUC values approximately doubled and the C_{max} increased by 60% compared to values in a parallel younger control group. There was no evidence of drug accumulation after once daily administration [see *Use in Specific Population (8.5)*].

Pediatric Population: The pharmacokinetics of rabeprazole was studied in 12 adolescent patients with GERD 12 to 16 years of age, in a multicenter study. Patients received 20 mg Rabeprazole Sodium delayed-release tablets once daily for five or seven days. An approximate 40% increase in rabeprazole exposure was noted following 5 to 7 days of dosing compared with the exposure after 1 day dosing. Pharmacokinetic parameters in adolescent patients with GERD 12 to 16 years of age were within the range observed in healthy adult subjects.

Male and Female Patients and Race/ or Ethnic Groups: In analyses adjusted for body mass and height, rabeprazole pharmacokinetics showed no clinically significant differences between male and female subjects. In studies that used different formulations of rabeprazole, AUC_{0-∞} values for healthy Japanese men were approximately 50 to 60% greater than values derived from pooled data from healthy men in the United States.

Patients with Renal Impairment: In 10 patients with stable end-stage renal disease requiring maintenance hemodialysis (creatinine clearance ≤ 5 mL/min/1.73 m²), no clinically significant differences were observed in the pharmacokinetics of rabeprazole after a single 20 mg dose of Rabeprazole Sodium delayed-release tablets when compared to 10 healthy subjects.

Patients with Hepatic Impairment: In a single dose study of 10 patients with mild to moderate hepatic impairment (Child-Pugh Class A and B, respectively) who were administered a single 20 mg dose of Rabeprazole Sodium delayed-release tablets, AUC₀₋₂₄ was approximately doubled, the elimination half-life was 2- to 3-fold higher, and total body clearance was decreased to less than half compared to values in healthy men.

In a multiple dose study of 12 patients with mild to moderate hepatic impairment administered 20 mg Rabeprazole Sodium delayed-release tablets once daily for eight days, AUC_{0-∞} and C_{max} values increased approximately 20% compared to values in healthy age- and gender-matched subjects. These increases were not statistically significant.

No information exists on rabeprazole disposition in patients with severe hepatic impairment (Child-Pugh Class C) [see *Use in Specific Populations (8.6)*].

Drug Interaction Studies

Combined Administration with Antimicrobials: Sixteen healthy subjects genotyped as extensive metabolizers with respect to CYP2C19 were given 20 mg Rabeprazole Sodium delayed-release tablets, 1000 mg amoxicillin, 500 mg clarithromycin, or all 3 drugs in a four-way crossover study. Each of the four regimens was administered twice daily for 6 days. The AUC and C_{max} for clarithromycin and amoxicillin were not different following combined administration compared to values following single administration. However, the rabeprazole AUC and C_{max} increased by 11% and 34%, respectively, following combined administration. The AUC and C_{max} for 14-hydroxycarithromycin (active metabolite of clarithromycin) also increased by 42% and 46%, respectively. This increase in exposure to rabeprazole and 14-hydroxycarithromycin is not expected to produce safety concerns.

Effects of Other Drugs on Rabeprazole

Antacids: Co-administration of Rabeprazole Sodium delayed-release tablets and antacids produced no clinically relevant changes in plasma rabeprazole concentrations.

Effects of Rabeprazole on Other Drugs

Studies in healthy subjects have shown that rabeprazole does not have clinically significant interactions with other drugs metabolized by the CYP450 system, such as theophylline (CYP1A2) given as single oral doses, diazepam (CYP2C9 and CYP3A4) as a single intravenous dose, and phenytoin (CYP2C9 and CYP2C19) given as a single intravenous dose (with supplemental oral dosing). Steady state interactions of rabeprazole and other drugs metabolized by this enzyme system have not been studied in patients.

Clopidogrel: Clopidogrel is metabolized to its active metabolite in part by CYP2C19. A study of healthy subjects including CYP2C19 extensive and intermediate metabolizers receiving once daily administration of clopidogrel 75 mg concomitantly with placebo or with 20 mg Rabeprazole Sodium delayed-release tablets (n=36), for 7 days was conducted. The mean AUC of the active metabolite of clopidogrel was reduced by approximately 12% (mean AUC ratio was 88%, with 90% CI of 81.7 to 95.5%) when Rabeprazole Sodium delayed-release tablets were coadministered compared to administration of clopidogrel with placebo [see *Drug Interactions (7)*].

Digoxin: In healthy adult subjects (n=16), co-administration of 20 mg Rabeprazole Sodium delayed-release tablets with 2.5 mg once daily doses of digoxin at steady state resulted in approximately 29% and 19% increase in mean C_{max} and AUC (0-24) of digoxin [see *Drug Interactions (7)*].

Ketoconazole: In healthy adult subjects (n=19), co-administration of 20 mg Rabeprazole Sodium delayed-release tablets at steady state with a single 400 mg oral dose ketoconazole resulted in approximately an average of 31% reduction in both C_{max} and AUC (0-inf) of ketoconazole [see *Drug Interactions (7)*].

Cyclosporine: *In vitro* incubations employing human liver microsomes indicated that rabeprazole inhibited cyclosporine metabolism with an IC₅₀ of 62 micromolar, a concentration that is over 50 times higher than the C_{max} in healthy volunteers following 14 days of dosing with 20 mg of Rabeprazole Sodium delayed-release tablets. This degree of inhibition is similar to that by omeprazole at equivalent concentrations.

12.4 Microbiology

The following *in vitro* data are available but the clinical significance is unknown.

Rabeprazole sodium, amoxicillin and clarithromycin as a three drug regimen has been shown to be active against most strains of *Helicobacter pylori in vitro* and in clinical infections [see *Indications and Usage (1), Clinical Studies (14.5)*].

Helicobacter pylori

Susceptibility testing of *H. pylori* isolates was performed for amoxicillin and clarithromycin using agar dilution methodology¹, and minimum inhibitory concentrations (MICs) were determined.

Standardized susceptibility test procedures require the use of laboratory control microorganisms to control the technical aspects of the laboratory procedures.

Incidence of Antibiotic-Resistant Organisms Among Clinical Isolates

Pretreatment Resistance: Clarithromycin pretreatment resistance rate (MIC ≥1 mcg/mL) to *H. pylori* was 9% (51/560) at baseline in all treatment groups combined. Greater than

99% (558/560) of patients had *H. pylori* isolates which were considered to be susceptible (MIC ≤ 0.25 mcg/mL) to amoxicillin at baseline. Two patients had baseline *H. pylori* isolates with an amoxicillin MIC of 0.5 mcg/mL.

For susceptibility testing information about *Helicobacter pylori*, see Microbiology section in prescribing information for clarithromycin and amoxicillin.

Table 6: Clarithromycin Susceptibility Test Results and Clinical/Bacteriologic Outcomes ^a for a Three Drug Regimen (Rabeprazole Sodium Delayed-Release Tablets 20 mg Twice Daily, Amoxicillin 1000 mg Twice Daily, and Clarithromycin 500 mg Twice Daily for 7 or 10 Days)

| Days of RAC Therapy | Clarithromycin Pretreatment Results | Total Number | <i>H. pylori</i> Negative (Eradicated) | <i>H. pylori</i> Positive (Persistent) Post-Treatment Susceptibility Results | | | |
|---------------------|-------------------------------------|--------------|--|--|----------------|----------------|--------|
| | | | | S ^b | I ^b | R ^b | No MIC |
| 7 | Susceptible ^b | 129 | 103 | 2 | 0 | 1 | 23 |
| 7 | Intermediate ^b | 0 | 0 | 0 | 0 | 0 | 0 |
| 7 | Resistant ^b | 16 | 5 | 2 | 1 | 4 | 4 |
| 10 | Susceptible ^b | 133 | 111 | 3 | 1 | 2 | 16 |
| 10 | Intermediate ^b | 0 | 0 | 0 | 0 | 0 | 0 |
| 10 | Resistant ^b | 9 | 1 | 0 | 0 | 5 | 3 |

^a Includes only patients with pretreatment and post-treatment clarithromycin susceptibility test results.

^b Susceptible (S) MIC ≤ 0.25 mcg/mL, Intermediate (I) MIC = 0.5 mcg/mL, Resistant (R) MIC ≥ 1 mcg/mL

Patients with persistent *H. pylori* infection following rabeprazole, amoxicillin, and clarithromycin therapy will likely have clarithromycin resistant clinical isolates. Therefore, clarithromycin susceptibility testing should be done when possible. If resistance to clarithromycin is demonstrated or susceptibility testing is not possible, alternative antimicrobial therapy should be instituted.

Amoxicillin Susceptibility Test Results and Clinical/Bacteriological Outcomes: In the U.S. multicenter study, greater than 99% (558/560) of patients had *H. pylori* isolates which were considered to be susceptible (MIC ≤ 0.25 mcg/mL) to amoxicillin at baseline. The other 2 patients had baseline *H. pylori* isolates with an amoxicillin MIC of 0.5 mcg/mL, and both isolates were clarithromycin-resistant at baseline; in one case the *H. pylori* was eradicated. In the 7- and 10-day treatment groups 75% (107/145) and 79% (112/142), respectively, of the patients who had pretreatment amoxicillin susceptible MICs (≤ 0.25 mcg/mL) were eradicated of *H. pylori*. No patients developed amoxicillin-resistant *H. pylori* during therapy.

12.5 Pharmacogenomics

In a clinical study in evaluating Rabeprazole Sodium delayed-release tablets in Japanese adult patients categorized by CYP2C19 genotype (n=6 per genotype category), gastric acid suppression was higher in poor metabolizers as compared to extensive metabolizers. This could be due to higher rabeprazole plasma levels in poor metabolizers. The clinical relevance of this is not known. Whether or not interactions of rabeprazole sodium with other drugs metabolized by CYP2C19 would be different between extensive metabolizers and poor metabolizers has not been studied.

13 NONCLINICAL TOXICOLOGY

13.1 Carcinogenesis, Mutagenesis, Impairment of Fertility

In an 88/104-week carcinogenicity study in CD-1 mice, rabeprazole at oral doses up to 100 mg/kg/day did not produce any increased tumor occurrence. The highest tested dose produced a systemic exposure to rabeprazole (AUC) of 1.40 $\mu\text{g}\cdot\text{hr}/\text{mL}$ which is 1.6 times the human exposure (plasma AUC_{0-∞} = 0.88 $\mu\text{g}\cdot\text{hr}/\text{mL}$) at the recommended dose for GERD (20 mg/day). In a 28-week carcinogenicity study in p53^{+/-} transgenic mice, rabeprazole at oral doses of 20, 60, and 200 mg/kg/day did not cause an increase in the incidence rates of tumors but produced gastric mucosal hyperplasia at all doses. The systemic exposure to rabeprazole at 200 mg/kg/day is about 17-24 times the human exposure at the recommended dose for GERD. In a 104-week carcinogenicity study in Sprague-Dawley rats, males were treated with oral doses of 5, 15, 30 and 60 mg/kg/day and females with 5, 15, 30, 60 and 120 mg/kg/day. Rabeprazole produced gastric enterochromaffin-like (ECL) cell hyperplasia in male and female rats and ECL cell carcinoid tumors in female rats at all doses including the lowest tested dose. The lowest dose (5 mg/kg/day) produced a systemic exposure to rabeprazole (AUC) of about 0.1 $\mu\text{g}\cdot\text{hr}/\text{mL}$ which is about 0.1 times the human exposure at the recommended dose for GERD. In male rats, no treatment related tumors were observed at doses up to 60 mg/kg/day producing a rabeprazole plasma exposure (AUC) of about 0.2 $\mu\text{g}\cdot\text{hr}/\text{mL}$ (0.2 times the human exposure at the recommended dose for GERD).

Rabeprazole was positive in the Ames test, the Chinese hamster ovary cell (CHO/HGPRT) forward gene mutation test, and the mouse lymphoma cell (L5178Y/TK+/-) forward gene mutation test. Its demethylated-metabolite was also positive in the Ames test. Rabeprazole was negative in the *in vitro* Chinese hamster lung cell chromosome aberration test, the *in vivo* mouse micronucleus test, and the *in vivo* and *ex vivo* rat hepatocyte unscheduled DNA synthesis (UDS) tests.

Rabeprazole at intravenous doses up to 30 mg/kg/day (plasma AUC of 8.8 $\mu\text{g}\cdot\text{hr}/\text{mL}$, about 10 times the human exposure at the recommended dose for GERD) was found to have no effect on fertility and reproductive performance of male and female rats.

14 CLINICAL STUDIES

14.1 Healing of Erosive or Ulcerative GERD in Adults

In a U.S., multicenter, randomized, double-blind, placebo-controlled study, 103 patients were treated for up to eight weeks with placebo, 10 mg, 20 mg or 40 mg Rabeprazole Sodium delayed-release tablets once daily. For this and all studies of GERD healing, only patients with GERD symptoms and at least grade 2 esophagitis (modified Hetzel-Dent grading scale) were eligible for entry. Endoscopic healing was defined as grade 0 or 1. Each rabeprazole dose was significantly superior to placebo in producing endoscopic healing after four and eight weeks of treatment. The percentage of patients demonstrating endoscopic healing was as follows:

Table 7: Healing of Erosive or Ulcerative Gastroesophageal Reflux Disease (GERD) Percentage of Patients Healed

| Week | Rabeprazole Sodium Delayed-Release Tablets | | | Placebo N=25 |
|------|--|--------------------------|--------------------------|-----------------|
| | 10 mg once daily N=27 | 20 mg once daily N=25 | 40 mg once daily N=26 | |
| 4 | 63% * | 56% * | 54% * | 0% |
| 8 | 93% * | 84% * | 85% * | 12% |

* (p<0.001 versus placebo)

In addition, there was a statistically significant difference in favor of the Rabeprazole Sodium delayed-release tablets 10 mg, 20 mg, and 40 mg doses compared to placebo at Weeks 4 and 8 regarding complete resolution of GERD heartburn frequency ($p \leq 0.026$). All Rabeprazole Sodium delayed-release tablets groups reported significantly greater rates of complete resolution of GERD daytime heartburn severity compared to placebo at Weeks 4 and 8 ($p \leq 0.036$). Mean reductions from baseline in daily antacid dose were statistically significant for all Rabeprazole Sodium delayed-release tablets groups when compared to placebo at both Weeks 4 and 8 ($p \leq 0.007$).

In a North American multicenter, randomized, double-blind, active-controlled study of 336 patients, the percentage of patients healed at endoscopy after four and eight weeks of treatment was statistically superior in the patients treated with Rabeprazole Sodium delayed-release tablets compared to ranitidine:

Table 8: Healing of Erosive or Ulcerative Gastroesophageal Reflux Disease (GERD) Percentage of Patients Healed

| Week | 20 mg Rabeprazole Sodium Delayed-Release Tablets once daily N=167 | Ranitidine 150 mg four times daily N=169 |
|------|--|---|
| 4 | 59% * | 36% |
| 8 | 87% * | 66% |

* ($p < 0.001$ versus ranitidine)

A dose of 20 mg once daily of Rabeprazole Sodium delayed-release tablets was significantly more effective than ranitidine 150 mg four times daily in the percentage of patients with complete resolution of heartburn at Weeks 4 and 8 ($p < 0.001$). Rabeprazole Sodium delayed-release tablets was also more effective in complete resolution of daytime heartburn ($p \leq 0.025$), and nighttime heartburn ($p \leq 0.012$) at both Weeks 4 and 8, with significant differences by the end of the first week of the study.

The recommended dosage of Rabeprazole Sodium delayed-release tablets is 20 mg once daily for 4 to 8 weeks.

14.2 Long-Term Maintenance of Healing of Erosive or Ulcerative GERD in Adults

The long-term maintenance of healing in patients with erosive or ulcerative GERD previously healed with gastric antisecretory therapy was assessed in two U.S., multicenter, randomized, double-blind, placebo-controlled studies of identical design of 52 weeks duration. The two studies randomized 209 and 285 patients, respectively, to receive either 10 mg or 20 mg of Rabeprazole Sodium delayed-release tablets once daily or placebo. As demonstrated in Tables 9 and 10 below, patients treated with Rabeprazole Sodium delayed-release tablets were significantly superior to placebo in both studies with respect to the maintenance of healing of GERD and the proportions of patients remaining free of heartburn symptoms at 52 weeks. The recommended dosage of Rabeprazole Sodium delayed-release tablets is 20 mg once daily.

Table 9: Percent of Patients in Endoscopic Remission

| | Rabeprazole Sodium Delayed-Release Tablets | | Placebo |
|---------|--|------------------|---------|
| | 10 mg once daily | 20 mg once daily | |
| Study 1 | N=66 | N=67 | N=70 |

| | | | |
|------------------|-------|-------|-------|
| Week 4 | 83% * | 96% * | 44% |
| Week 13 | 79% * | 93% * | 39% |
| Week 26 | 77% * | 93% * | 31% |
| Week 39 | 76% * | 91% * | 30% |
| Week 52 | 73% * | 90% * | 29% |
| Study 2 | N=93 | N=93 | N=99 |
| Week 4 | 89% * | 94% * | 40% |
| Week 13 | 86% * | 91% * | 33% |
| Week 26 | 85% * | 89% * | 30% |
| Week 39 | 84% * | 88% * | 29% |
| Week 52 | 77% * | 86% * | 29% |
| COMBINED STUDIES | N=159 | N=160 | N=169 |
| Week 4 | 87% * | 94% * | 42% |
| Week 13 | 83% * | 92% * | 36% |
| Week 26 | 82% * | 91% * | 31% |
| Week 39 | 81% * | 89% * | 30% |
| Week 52 | 75% * | 87% * | 29% |

* (p<0.001 versus placebo)

Table 10: Percent of Patients Without Relapse in Heartburn Frequency and Daytime and Nighttime Heartburn Severity at Week 52

| | Rabeprazole Sodium Delayed-Release Tablets | | Placebo |
|------------------------------|--|------------------|-------------|
| | 10 mg once daily | 20 mg once daily | |
| Heartburn Frequency | | | |
| Study 1 | 46/55 (84%) * | 48/52 (92%) * | 17/45 (38%) |
| Study 2 | 50/72 (69%) * | 57/72 (79%) * | 22/79 (28%) |
| Daytime Heartburn Severity | | | |
| Study 1 | 61/64 (95%) * | 60/62 (97%) * | 42/61 (69%) |
| Study 2 | 73/84 (87%) † | 82/87 (94%) * | 67/90 (74%) |
| Nighttime Heartburn Severity | | | |
| Study 1 | 57/61 (93%) * | 60/61 (98%) * | 37/56 (66%) |
| Study 2 | 67/80 (84%) | 79/87 (91%) † | 64/87 (74%) |

* p≤0.001 versus placebo

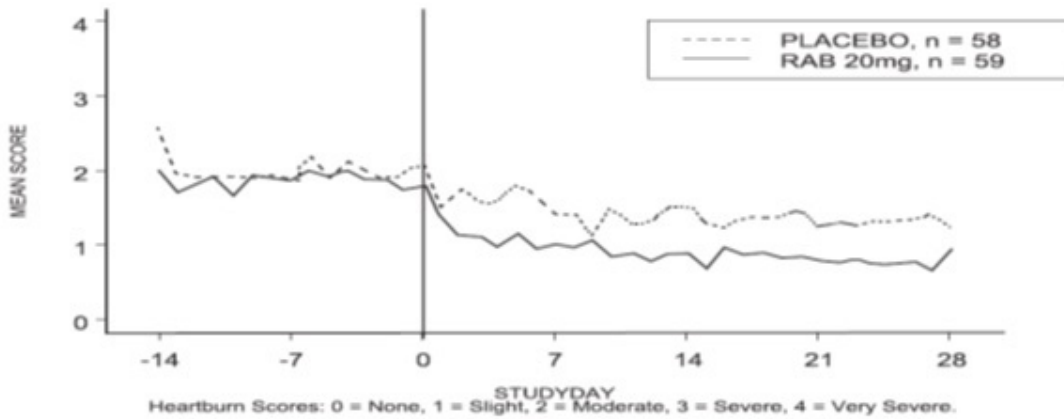
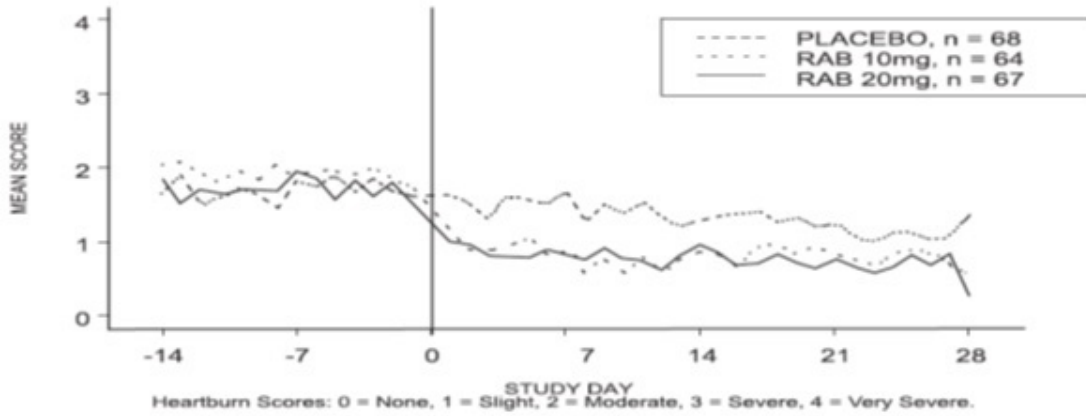
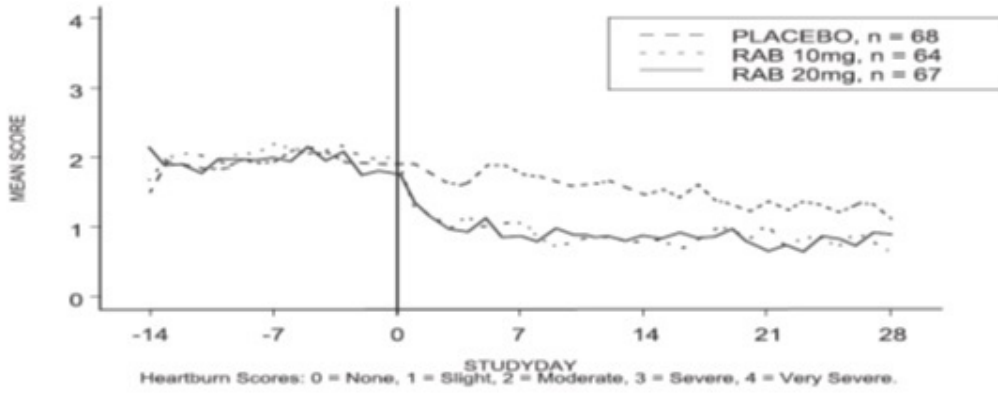
† 0.001<p<0.05 versus placebo

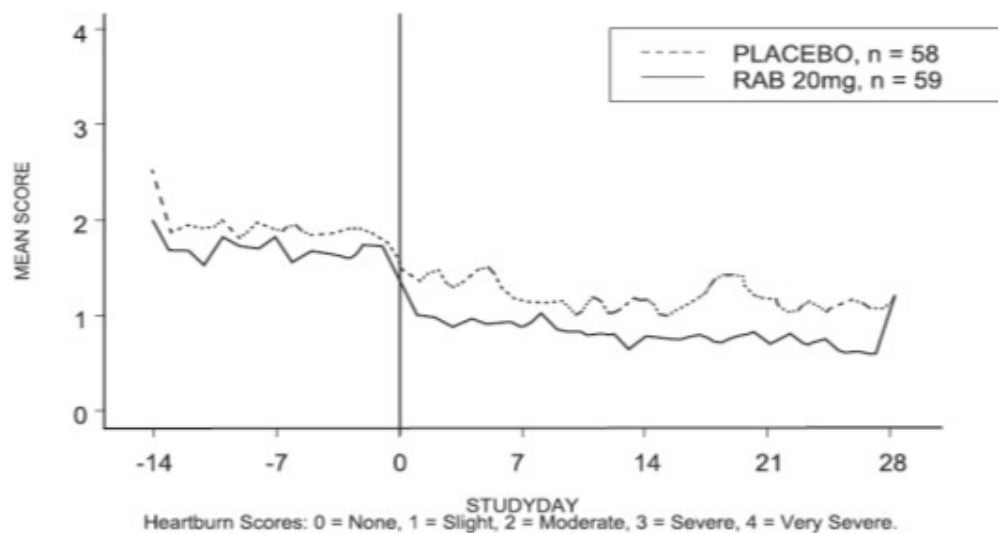
14.3 Treatment of Symptomatic GERD in Adults

Two U.S., multicenter, double-blind, placebo controlled studies were conducted in 316 adult patients with daytime and nighttime heartburn. Patients reported 5 or more periods of moderate to very severe heartburn during the placebo treatment phase the week prior to randomization. Patients were confirmed by endoscopy to have no esophageal erosions.

The percentage of heartburn free daytime and/or nighttime periods was greater with 20 mg Rabeprazole Sodium delayed-release tablets compared to placebo over the 4 weeks of study in Study RAB-USA-2 (47% vs. 23%) and Study RAB-USA-3 (52% vs. 28%). The mean decreases from baseline in average daytime and nighttime heartburn scores were significantly greater for Rabeprazole Sodium delayed-release tablets 20 mg as compared to placebo at week 4. Graphical displays depicting the daily mean daytime and nighttime

scores are provided in Figures 2 to 5.





In addition, the combined analysis of these two studies showed 20 mg of Rabeprazole Sodium delayed-release tablets significantly improved other GERD-associated symptoms (regurgitation, belching, and early satiety) by week 4 compared with placebo (all p values < 0.005).

A dose of 20 mg Rabeprazole Sodium delayed-release tablets also significantly reduced daily antacid consumption versus placebo over 4 weeks (p<0.001).

The recommended dosage of Rabeprazole Sodium delayed-release tablets is 20 mg once daily for 4 weeks.

14.4 Healing of Duodenal Ulcers in Adults

In a U.S., randomized, double-blind, multicenter study assessing the effectiveness of 20 mg and 40 mg of Rabeprazole Sodium delayed-release tablets once daily versus placebo for healing endoscopically defined duodenal ulcers, 100 patients were treated for up to four weeks. Rabeprazole Sodium delayed-release tablets were significantly superior to placebo in producing healing of duodenal ulcers. The percentages of patients with endoscopic healing are presented below:

**Table 11: Healing of Duodenal Ulcers
Percentage of Patients Healed**

| Week | Rabeprazole Sodium Delayed-Release Tablets | | Placebo N=33 |
|------|--|-----------------------|-----------------|
| | 20 mg once daily N=34 | 40 mg once daily N=33 | |
| 2 | 44% | 42% | 21% |
| 4 | 79% * | 91% * | 39% |

* p≤0.001 versus placebo

At Weeks 2 and 4, significantly more patients in the Rabeprazole Sodium delayed-release tablets 20 and 40 mg groups reported complete resolution of ulcer pain frequency (p≤0.018), daytime pain severity (p≤0.023), and nighttime pain severity (p≤0.035) compared with placebo patients. The only exception was the 40 mg group versus placebo at Week 2 for duodenal ulcer pain frequency (p=0.094). Significant differences in resolution of daytime and nighttime pain were noted in both Rabeprazole Sodium delayed-release tablets groups relative to placebo by the end of the first week of the study. Significant reductions in daily antacid use were also noted in both Rabeprazole

Sodium delayed-release tablets groups compared to placebo at Weeks 2 and 4 ($p < 0.001$).

An international randomized, double-blind, active-controlled trial was conducted in 205 patients comparing 20 mg Rabeprazole Sodium delayed-release tablets once daily with 20 mg omeprazole once daily. The study was designed to provide at least 80% power to exclude a difference of at least 10% between Rabeprazole Sodium delayed-release tablets and omeprazole, assuming four-week healing response rates of 93% for both groups. In patients with endoscopically defined duodenal ulcers treated for up to four weeks, Rabeprazole Sodium delayed-release tablets were comparable to omeprazole in producing healing of duodenal ulcers. The percentages of patients with endoscopic healing at two and four weeks are presented below:

Table 12: Healing of Duodenal Ulcers Percentage of Patients Healed

| Week | Rabeprazole Sodium Delayed-Release Tablets 20 mg once daily N=102 | Omeprazole 20 mg once daily N=103 | 95% Confidence Interval for the Treatment Difference (Rabeprazole Sodium Delayed-Release Tablets - Omeprazole) |
|------|--|--------------------------------------|--|
| 2 | 69% | 61% | (-6%, 22%) |
| 4 | 98% | 93% | (-3%, 15%) |

Rabeprazole Sodium delayed-release tablets and omeprazole were comparable in providing complete resolution of symptoms.

The recommended dosage of Rabeprazole Sodium delayed-release tablets is 20 mg once daily for 4 weeks.

14.5 *Helicobacter pylori* Eradication in Patients with Peptic Ulcer Disease or Symptomatic Non-Ulcer Disease in Adults

The U.S. multicenter study was a double-blind, parallel-group comparison of Rabeprazole Sodium delayed-release tablets, amoxicillin, and clarithromycin for 3, 7, or 10 days vs. omeprazole, amoxicillin, and clarithromycin for 10 days. Therapy consisted of rabeprazole 20 mg twice daily, amoxicillin 1000 mg twice daily, and clarithromycin 500 mg twice daily (RAC) or omeprazole 20 mg twice daily, amoxicillin 1000 mg twice daily, and clarithromycin 500 mg twice daily (OAC). Patients with *H. pylori* infection were stratified in a 1:1 ratio for those with peptic ulcer disease (active or a history of ulcer in the past five years) [PUD] and those who were symptomatic but without peptic ulcer disease [NPUD], as determined by upper gastrointestinal endoscopy. The overall *H. pylori* eradication rates, defined as negative ¹³C-UBT for *H. pylori* ≥ 6 weeks from the end of the treatment are shown in the following table. The eradication rates in the 7-day and 10-day RAC regimens were found to be similar to 10-day OAC regimen using either the Intent-to-Treat (ITT) or Per-Protocol (PP) populations. Eradication rates in the RAC 3-day regimen were inferior to the other regimens.

Table 13: *Helicobacter pylori* Eradication at 6 Weeks After the End of Treatment

| | Treatment Group Percent (%) of Patients Cured | Difference (RAC - OAC) |
|--|---|------------------------|
|--|---|------------------------|

| | (Number of Patients) | | [95% Confidence Interval] |
|----------------------------------|----------------------|---------------|---------------------------|
| 7-day RAC* 10-day OAC | | | |
| Per Protocol ^a | 84.3% (N=166) | 81.6% (N=179) | 2.8 [- 5.2, 10.7] |
| Intent-to-Treat ^b | 77.3% (N=194) | 73.3% (N=206) | 4.0 [- 4.4, 12.5] |
| 10-day RAC* 10-day OAC | | | |
| Per Protocol ^a | 86.0% (N=171) | 81.6% (N=179) | 4.4 [- 3.3, 12.1] |
| Intent-to-Treat ^b | 78.1% (N=196) | 73.3% (N=206) | 4.8 [- 3.6, 13.2] |
| 3-day RAC 10-day OAC | | | |
| Per Protocol ^a | 29.9% (N=167) | 81.6% (N=179) | - 51.6 [- 60.6, - 42.6] |
| Intent-to-Treat ^b | 27.3% (N=187) | 73.3% (N=206) | - 46.0 [- 54.8, - 37.2] |

^a Patients were included in the analysis if they had *H. pylori* infection documented at baseline, defined as a positive ¹³C-UBT plus rapid urease test or culture and were not protocol violators. Patients who dropped out of the study due to an adverse event related to the study drug were included in the evaluable analysis as failures of therapy.

^b Patients were included in the analysis if they had documented *H. pylori* infection at baseline as defined above and took at least one dose of study medication. All dropouts were included as failures of therapy.

* The 95% confidence intervals for the difference in eradication rates for 7-day RAC minus 10-day RAC are (- 9.3, 6.0) in the PP population and (-9.0, 7.5) in the ITT population.

The recommended dosage of Rabeprazole Sodium Delayed-Release Tablets is 20 mg twice daily with amoxicillin and clarithromycin for 7 days.

14.6 Pathological Hypersecretory Conditions, Including Zollinger-Ellison Syndrome in Adults

Twelve patients with idiopathic gastric hypersecretion or Zollinger-Ellison syndrome have been treated successfully with Rabeprazole Sodium delayed-release tablets at doses from 20 to 120 mg for up to 12 months. Rabeprazole Sodium delayed-release tablets produced satisfactory inhibition of gastric acid secretion in all patients and complete resolution of signs and symptoms of acid-peptic disease where present. Rabeprazole Sodium delayed-release tablets also prevented recurrence of gastric hypersecretion and manifestations of acid-peptic disease in all patients. The high doses of Rabeprazole Sodium delayed-release tablets used to treat this small cohort of patients with gastric hypersecretion were well tolerated.

The recommended starting dosage of Rabeprazole Sodium delayed-release tablets is 60 mg once daily.

15 REFERENCES

1. Clinical and Laboratory Standards Institute (CLSI). *Methods for Dilution Antimicrobial Susceptibility Tests for Bacteria That Grow Aerobically; Approved Standard-Tenth Edition*. CLSI Document M07-A10, Clinical and Laboratory Standards Institute, 950 West Valley

Road, Suite 2500, Wayne, Pennsylvania, 19087, USA 2015.

16 HOW SUPPLIED/STORAGE AND HANDLING

Rabeprazole Sodium delayed-release tablets 20 mg are supplied as light yellow colored round, biconvex tablets with beveled edges and B683 printed on one side with black ink and plain on the other side.

NDC 60760-972-07 BOTTLES OF 07

NDC 60760-972-30 BOTTLES OF 30

Store at 25°C (77°F); excursions permitted to 15-30°C (59-86°F). *[see USP Controlled Room Temperature]*. Protect from moisture.

17 PATIENT COUNSELING INFORMATION

Advise the patient to read the FDA-approved patient labeling (Medication Guide).

Acute Interstitial Nephritis

Advise patients caregiver to call the patient's healthcare provider immediately if they experience any signs and/or symptoms associated with acute interstitial nephritis *[see Warnings and Precautions (5.3)]* .

Clostridium difficile-Associated Diarrhea *[see Warnings and Precautions (5.4)]* .

Advise the patient or caregiver to immediately call the patient's healthcare provider if they experience diarrhea that does not improve *[see Warnings and Precautions (5.4)]*

Bone Fracture

Advise the patient or caregiver to report any fractures, especially of the hip, wrist or spine, to the patient's healthcare provider *[see Warnings and Precautions (5.5)]*

Cutaneous and Systemic Lupus Erythematosus

Advise the patient or caregiver to immediately call the patient's healthcare provider for any new or worsening of symptoms associated with cutaneous or systemic lupus erythematosus *[see Warnings and Precautions (5.6)]*.

Cyanocobalamin (Vitamin B-12) Deficiency

Advise the patient or caregiver to report any clinical symptoms that may be associated with cyanocobalamin deficiency to the patient's healthcare provider if they have been receiving Rabeprazole Sodium delayed-release tablets for longer than 3 years *[see Warnings and Precautions (5.7)]*.

Hypomagnesemia

Advise the patient or caregiver to report any clinical symptoms that may be associated with hypomagnesemia to the patient's healthcare provider, if they have been receiving Rabeprazole Sodium delayed-release tablets for at least 3 months *[see Warnings and Precautions (5.8)]*.

Drug Interactions

Advise patients to report to their healthcare provider if they are taking rilpivirine-containing products *[see Contraindications (4)]*, warfarin, digoxin or high-dose methotrexate *[see Warnings and Precautions (5.2, 5.8, 5.9)]* .

Administration

- Swallow Rabeprazole Sodium delayed-release tablets whole. Do not chew, crush or split the tablets.
- For the treatment of duodenal ulcers take Rabeprazole Sodium delayed-release tablets after a meal.
- For *Helicobacter pylori* eradication take Rabeprazole Sodium delayed-release tablets with food.
- For all other indications Rabeprazole Sodium delayed-release tablets can be taken with or without food.
- Take a missed dose as soon as possible. If it is almost time for the next dose, skip the missed dose and go back to the normal schedule. Do not take two doses at the same time.

Rx Only

Distributed by:

Advagen Pharma Ltd.,

666 Plainsboro Road,

Suite 605,

Plainsboro, NJ, 08536, USA.

Manufactured by:

Rubicon Research Private Limited

Plot K-30/4 & K-30/5

Additional MIDC,

Ambarnath (E),

Dist: Thane, 421 506

Maharashtra, India.

All brand names are the trademarks of their respective owners.

Revised: 08/2020

MEDICATION GUIDE

Rabeprazole Sodium (ra-bep-ra-zole soe-dee-um) delayed-release tablets

What is the most important information I should know about Rabeprazole Sodium delayed-release tablets?

You should take Rabeprazole Sodium delayed-release tablets exactly as prescribed, at the lowest dose possible and for the shortest time needed.

Rabeprazole Sodium delayed-release tablets may help your acid-related symptoms, but you could still have serious stomach problems. Talk with your doctor.

Rabeprazole Sodium delayed-release tablets can cause serious side effects, including:

- **A type of kidney problem (acute interstitial nephritis).** Some people who take proton pump inhibitor (PPI) medicines, including Rabeprazole Sodium delayed-release tablets, may develop a kidney problem called acute interstitial nephritis that can happen at any time during treatment with Rabeprazole Sodium delayed-release tablets. Call your doctor right away if you have a decrease in the amount that you urinate or if you have blood in your urine.
- **Diarrhea caused by an infection (*Clostridium difficile*) in your intestines.** Call your doctor right away if you have watery stool or stomach pain that does not go away. You may or may not have a fever.
- **Bone fractures (hip, wrist, or spine).** Bone fractures in the hip, wrist, or spine may happen in people who take multiple daily doses of PPI medicines for a long period of time (a year or longer). Tell your doctor if you have a bone fracture, especially in the hip, wrist, or spine.
- **Certain types of lupus erythematosus.** Lupus erythematosus is an autoimmune disorder (the body's immune cells attack other cells or organs in the body). Some people who take PPI

medicines, including Rabeprazole Sodium delayed-release tablets, may develop certain types of lupus erythematosus or have worsening of the lupus they already have. Call your doctor right away if you have new or worsening joint pain or a rash on your cheeks or arms that gets worse in the sun.

Talk to your doctor about your risk of these serious side effects.

Rabeprazole Sodium delayed-release tablets can have other serious side effects. See "**What are the possible side effects of Rabeprazole Sodium delayed-release tablets**"

What are Rabeprazole Sodium delayed-release tablets?

Rabeprazole Sodium delayed-release tablets are a prescription medicine called a proton pump inhibitor (PPI).

Rabeprazole Sodium delayed-release tablets reduces the amount of acid in your stomach.

In adults, Rabeprazole Sodium delayed-release tablets are used for:

- 8 weeks up to 16 weeks to heal acid-related damage to the lining of the esophagus (called erosive esophagitis or EE) and to relieve symptoms, such as heartburn pain.
- maintaining the healing of the esophagus and relief of symptoms related to EE. It is not known if Rabeprazole Sodium delayed-release tablets are safe and effective if used longer than 12 months (1 year).
- up to 4 weeks to treat daytime and nighttime heartburn and other symptoms that happen with Gastroesophageal Reflux Disease (GERD).
- up to 4 weeks for the healing and relief of duodenal ulcers.
- 7 days with certain antibiotic medicines to treat an infection and stomach (duodenal) ulcers caused by bacteria called *H. pylori*.
- the long-term treatment of conditions where your stomach makes too much acid. This includes a rare condition called Zollinger-Ellison syndrome.

In adolescents 12 years of age and older, Rabeprazole Sodium delayed-release tablets is used up to 8 weeks to treat symptoms of (GERD).

It is not known if Rabeprazole Sodium delayed-release tablets are safe and effective in children less 12 years of age.

Rabeprazole Sodium delayed-release tablets should not be used in children under 12 years of age.

Do not take Rabeprazole Sodium delayed-release tablets if you are:

- allergic to rabeprazole, any other PPI medicine, or any of the ingredients in Rabeprazole Sodium delayed-release tablets. See the end of this Medication Guide for a complete list of ingredients.
- taking a medicine that contains rilpivirine (EDURANT, COMPLERA, ODEFSEY) used to treat HIV-1 (Human Immunodeficiency Virus)

Before you take Rabeprazole Sodium delayed-release tablets tell your doctor about all of your medical conditions, including if you:

- have low magnesium levels in your blood
- have liver problems
- are pregnant or plan to become pregnant. It is not known if Rabeprazole Sodium delayed-release tablets can harm your unborn baby.
- are breastfeeding or plan to breastfeed. It is not known if rabeprazole passes into your breast milk.

Talk to your doctor about the best way to feed your baby if you take Rabeprazole Sodium delayed-release tablets

Tell your doctor about all the medicines you take, including prescription and over-the-counter medicines, vitamins, and herbal supplements. **Especially tell your doctor** if you take an antibiotic that contains clarithromycin or amoxicillin or if you take warfarin (COUMADIN, JANTOVEN) or methotrexate (OTREXUP, RASUVO, TREXALL, XATMEP), digoxin (LANOXIN), or a water pill diuretic).

How should I take Rabeprazole Sodium delayed-release tablets?

- Take Rabeprazole Sodium delayed-release tablets exactly as prescribed.
- Rabeprazole Sodium delayed-release tablets is usually taken 1 time each day. Your doctor will tell you the time of day to take Rabeprazole Sodium delayed-release tablets, based on your medical condition.
- Rabeprazole Sodium delayed-release tablets can be taken with or without food. Your doctor will tell you whether to take this medicine with or without food based on your medical condition.
- Swallow each Rabeprazole Sodium delayed-release tablet whole. **Do not chew, crush, or split Rabeprazole Sodium delayed release tablets** . Tell your doctor if you cannot swallow tablets whole.
- If you miss a dose of Rabeprazole Sodium delayed-release tablets, take it as soon as possible. If it is almost time for your next dose, you should not take the missed dose. You should take your next dose at your regular time. Do not take 2 doses at the same time.
- If you take too much Rabeprazole Sodium delayed-release tablets, call your doctor or your poison control center at 1-800-222-1222 right away, or go to the nearest emergency room.
- If your doctor prescribes antibiotic medicines with Rabeprazole Sodium delayed-release tablets read the patient information that comes with the antibiotic medicines before you take them.

What are the possible side effects of Rabeprazole Sodium delayed-release tablets? Rabeprazole Sodium delayed-release tablets may cause serious side effects, including:

- **See "What is the most important information I should know about Rabeprazole Sodium delayed-release tablets?"**
- **Interaction with warfarin.** Taking warfarin with a PPI medicine may lead to an increased risk of bleeding and death. If you take warfarin, your doctor may check your blood to see if you have an increased risk of bleeding. If you take warfarin during treatment with Rabeprazole Sodium delayed-release tablets, tell your doctor right away if you have any signs or symptoms of bleeding, including:

| | |
|--|---|
| <ul style="list-style-type: none"> <input type="radio"/> pain, swelling or discomfort <input type="radio"/> headaches, dizziness, or weakness <input type="radio"/> unusual bruising (bruises that happen without known cause or that grow in size) <input type="radio"/> nosebleeds <input type="radio"/> bleeding gums <input type="radio"/> bleeding from cuts take a long time to stop | <ul style="list-style-type: none"> <input type="radio"/> menstrual bleeding that is heavier than normal <input type="radio"/> pink or brown urine <input type="radio"/> red or black stools <input type="radio"/> coughing up blood <input type="radio"/> vomiting blood or vomit that looks like coffee grounds |
|--|---|
- **Low vitamin B-12 levels** in the body can happen in people who have taken Rabeprazole Sodium delayed-release tablets for a long time (more than 3 years). Tell your doctor if you have symptoms of low vitamin B-12 levels, including shortness of breath, lightheadedness, irregular heartbeat, muscle weakness, pale skin, feeling tired, mood changes, and tingling or numbness in the arms and legs.
- **Low magnesium levels in your body** can happen in people who have taken Rabeprazole Sodium delayed release tablets for at least 3 months. Tell your doctor if you have symptoms of low magnesium levels, including seizures, dizziness, irregular heartbeat, jitteriness, muscle aches or weakness, and spasms of hands, feet or voice.

Stomach growths (fundic gland polyps). People who take PPI medicines for a long time have an increased risk of developing a certain type of stomach growths called fundic gland polyps, especially after taking PPI medicines for more than 1 year.

- **The most common side effects of Rabeprazole Sodium delayed-release tablets in adults include** : pain, sore throat, gas, infection, constipation.

The most common side effects of Rabeprazole Sodium delayed-release tablets in adolescents 12 years of age and older include: headache, diarrhea, nausea, vomiting, and stomach-area (abdomen) pain.

These are not all of the possible side effects of Rabeprazole Sodium delayed-release tablets. Call your doctor for medical advice about side effects. You may report side effects to FDA at 1-800-FDA-1088.

How should I store Rabeprazole Sodium delayed-release tablets?

Store Rabeprazole Sodium delayed-release tablets in a dry place at room temperature between 68°F to 77°F (20°C to 25°C).

Keep Rabeprazole Sodium delayed-release tablets and all medicines out of the reach of children

General Information about Rabeprazole Sodium delayed-release tablets

Medicines are sometimes prescribed for purposes other than those listed in a Medication Guide. Do not use Rabeprazole Sodium delayed-release tablets for a condition for which it was not prescribed. Do not give Rabeprazole Sodium delayed-release tablets to other people, even if they have the same symptoms that you have. It may harm them.

You can ask your doctor or pharmacist for information about Rabeprazole Sodium delayed-release tablets that is written for health professionals

What are the ingredients in Rabeprazole Sodium delayed-release tablets?

Active ingredient: rabeprazole sodium

Inactive ingredients: diacetylated monoglycerides, ethylcellulose, hydroxypropyl cellulose, hypromellose phthalate, light magnesium oxide, low substituted hydroxypropyl cellulose, magnesium stearate, mannitol, talc, and titanium dioxide. Iron oxide yellow is the coloring agent for the tablet coating. The ink pigment contains ammonium hydroxide, black iron oxide, propylene glycol, and shellac glaze (modified) in SD-45.

This Medication Guide has been approved by the U.S. Food and Drug Administration.

All the registered trademarks used herein are the property of their respective owners.

Rx Only

Distributed by:

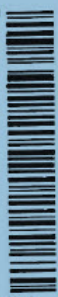
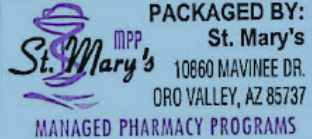
Advagen Pharma Ltd.,
666 Plainsboro Road,
Suite 605,
Plainsboro, NJ, 08536, USA.

Manufactured by

Rubicon Research Private Limited
Plot K-30/4 & K-30/5
Additional MIDC,
Ambarnath (E),
Dist: Thane, 421 506
Maharashtra, India.

Revised:

08/2020

| | | | | | |
|--|--|---|---|---|---|
| NDC 60760-972-30 Rabeprazole Sodium Delayed-Release Tablets 20mg QTY: 30 LOT# ??????? EXP ??-?? RX# 000000000 MANUFACTURED BY: Rubicon Research Private Limited Ambemath, Dist. Thane, 421506 India Maharashtra, India. |  | Rabeprazole Sodium Delayed-Release Tablets 20mg QTY: 30 RX# 000000000 NDC 60760-972-30 LOT# ??????? EXP ??-?? | Rabeprazole Sodium Delayed-Release Tablets 20mg QTY: 30 RX# 000000000 NDC 60760-972-30 LOT# ??????? EXP ??-?? | Rabeprazole Sodium Delayed-Release Tablets 20mg QTY: 30 RX# 000000000 NDC 60760-972-30 LOT# ??????? EXP ??-?? | Rabeprazole Sodium Delayed-Release Tablets 20mg QTY: 30 RX# 000000000 NDC 60760-972-30 LOT# ??????? EXP ??-?? |
| | | USE AS DIRECTED | | | |
|  | | (01) 00360760972307 (21) 000000000 (17) ??????? (10) ??????? | | Rx only STORE AT CONTROLLED ROOM TEMPERATURE 15°- 30° C (59°-86°F) | |

| RABEPRAZOLE SODIUM | | | |
|---|-------------------------|---------------------------|------------------------------|
| rabeprazole sodium tablet, delayed release | | | |
| Product Information | | | |
| Product Type | HUMAN PRESCRIPTION DRUG | Item Code (Source) | NDC:60760-972(NDC:72888-059) |
| Route of Administration | ORAL | | |
| Active Ingredient/Active Moiety | | | |
| Ingredient Name | | Basis of Strength | Strength |
| RABEPRAZOLE SODIUM (UNII: 3L36P16U4R) (RABEPRAZOLE - UNII:32828355LL) | | RABEPRAZOLE SODIUM | 20 mg |
| Inactive Ingredients | | | |
| Ingredient Name | | | Strength |
| AMMONIA (UNII: 5138Q19F1X) | | | |
| DIACETYLATED MONOGLYCERIDES (UNII: 5Z17386USF) | | | |
| ETHYLCELLULOSE, UNSPECIFIED (UNII: 7Z859VYZ4B) | | | |
| FERRIC OXIDE YELLOW (UNII: EX438O2MRT) | | | |
| FERROSFERRIC OXIDE (UNII: XM0M87F357) | | | |
| HYDROXYPROPYL CELLULOSE (1600000 WAMW) (UNII: RFW2ET671P) | | | |
| HYDROXYPROPYL CELLULOSE, LOW SUBSTITUTED (UNII: 2165RE0K14) | | | |
| HYPROMELLOSE PHTHALATE (31% PHTHALATE, 40 CST) (UNII: G4U024CQK6) | | | |
| MAGNESIUM OXIDE (UNII: 3A3U0GI71G) | | | |
| MAGNESIUM STEARATE (UNII: 70097M6I30) | | | |
| MANNITOL (UNII: 3OWL53L36A) | | | |
| PROPYLENE GLYCOL (UNII: 6DC9Q167V3) | | | |
| SHELLAC (UNII: 46N107B71O) | | | |
| TALC (UNII: 7SEV7J4R1U) | | | |
| TITANIUM DIOXIDE (UNII: 15FIX9V2JP) | | | |
| Product Characteristics | | | |
| Color | yellow (light yellow) | Score | no score |
| Shape | ROUND | Size | 8mm |

| Flavor | | Imprint Code | B683 | |
|------------------------------|--|--|----------------------|--------------------|
| Contains | | | | |
| Packaging | | | | |
| # | Item Code | Package Description | Marketing Start Date | Marketing End Date |
| 1 | NDC:60760-972-30 | 30 in 1 BOTTLE, PLASTIC; Type 0: Not a Combination Product | 05/06/2021 | |
| 2 | NDC:60760-972-07 | 7 in 1 BOTTLE, PLASTIC; Type 0: Not a Combination Product | 03/19/2024 | |
| Marketing Information | | | | |
| Marketing Category | Application Number or Monograph Citation | Marketing Start Date | Marketing End Date | |
| ANDA | ANDA204237 | 05/06/2021 | | |

Labeler - St. Mary's Medical Park Pharmacy (063050751)

Establishment

| Name | Address | ID/FEI | Business Operations |
|---------------------------------|---------|-----------|--|
| St Mary's Medical Park Pharmacy | | 063050751 | relabel(60760-972) , repack(60760-972) |

Revised: 3/2024

St. Mary's Medical Park Pharmacy