

# LOVAZA- omega-3-acid ethyl esters capsule, liquid filled

## Woodward Pharma Services LLC

-----

### HIGHLIGHTS OF PRESCRIBING INFORMATION

These highlights do not include all the information needed to use LOVAZA safely and effectively. See full prescribing information for LOVAZA.

**LOVAZA® (omega-3-acid ethyl esters capsules), for oral use**  
**Initial U.S. Approval: 2004**

### INDICATIONS AND USAGE

LOVAZA is a combination of ethyl esters of omega 3 fatty acids, principally eicosapentaenoic acid (EPA) and docosahexaenoic acid (DHA), indicated as an adjunct to diet to reduce triglyceride (TG) levels in adult patients with severe ( $\geq 500$  mg/dL) hypertriglyceridemia. (1)

Limitations of Use:

- The effect of LOVAZA on the risk for pancreatitis has not been determined. (1)
- The effect of LOVAZA on cardiovascular mortality and morbidity has not been determined. (1)

### DOSAGE AND ADMINISTRATION

- The daily dose of LOVAZA is 4 grams per day taken as a single 4-gram dose (4 capsules) or as two 2-gram doses (2 capsules given twice daily). (2)
- Patients should be advised to swallow LOVAZA capsules whole. Do not break open, crush, dissolve, or chew LOVAZA. (2)

### DOSAGE FORMS AND STRENGTHS

1 gram transparent soft-gelatin capsules. (3)

### CONTRAINDICATIONS

LOVAZA is contraindicated in patients with known hypersensitivity (e.g., anaphylactic reaction) to LOVAZA or any of its components. (4)

### WARNINGS AND PRECAUTIONS

- In patients with hepatic impairment, monitor ALT and AST levels periodically during therapy. (5.1)
- LOVAZA may increase levels of low-density lipoprotein (LDL). Monitor LDL levels periodically during therapy. (5.1)
- Use with caution in patients with known hypersensitivity to fish and/or shellfish. (5.2)
- There is a possible association between LOVAZA and more frequent recurrences of symptomatic atrial fibrillation or flutter in patients with paroxysmal or persistent atrial fibrillation, particularly within the first months of initiating therapy. (5.3)

### ADVERSE REACTIONS

The most common adverse reactions (incidence  $>3\%$  and greater than placebo) were eructation, dyspepsia, and taste perversion. (6)

**To report SUSPECTED ADVERSE REACTIONS, contact Woodward Pharma Services LLC at 1-844-700-2472 or FDA at 1-800-FDA-1088 or [www.fda.gov/medwatch](http://www.fda.gov/medwatch).**

### DRUG INTERACTIONS

Omega-3-acids may prolong bleeding time. Patients taking LOVAZA and an anticoagulant or other drug affecting coagulation (e.g., anti-platelet agents) should be monitored periodically. (7.1)

**See 17 for PATIENT COUNSELING INFORMATION and FDA-approved patient labeling.**

**Revised: 2/2021**

---

## FULL PRESCRIBING INFORMATION: CONTENTS\*

### 1 INDICATIONS AND USAGE

## **2 DOSAGE AND ADMINISTRATION**

## **3 DOSAGE FORMS AND STRENGTHS**

## **4 CONTRAINDICATIONS**

## **5 WARNINGS AND PRECAUTIONS**

5.1 Monitoring: Laboratory Tests

5.2 Fish Allergy

5.3 Recurrent Atrial Fibrillation (AF) or Flutter

## **6 ADVERSE REACTIONS**

6.1 Clinical Trials Experience

6.2 Postmarketing Experience

## **7 DRUG INTERACTIONS**

7.1 Anticoagulants or Other Drugs Affecting Coagulation

## **8 USE IN SPECIFIC POPULATIONS**

8.1 Pregnancy

8.2 Lactation

8.4 Pediatric Use

8.5 Geriatric Use

## **11 DESCRIPTION**

## **12 CLINICAL PHARMACOLOGY**

12.1 Mechanism of Action

12.3 Pharmacokinetics

## **13 NONCLINICAL TOXICOLOGY**

13.1 Carcinogenesis, Mutagenesis, Impairment of Fertility

## **14 CLINICAL STUDIES**

14.1 Severe Hypertriglyceridemia

## **16 HOW SUPPLIED/STORAGE AND HANDLING**

## **17 PATIENT COUNSELING INFORMATION**

\* Sections or subsections omitted from the full prescribing information are not listed.

---

## **FULL PRESCRIBING INFORMATION**

### **1 INDICATIONS AND USAGE**

LOVAZA (omega-3-acid ethyl esters capsules) is indicated as an adjunct to diet to reduce triglyceride (TG) levels in adult patients with severe (greater than or equal to 500 mg/dL) hypertriglyceridemia.

**Usage Considerations:** Patients should be placed on an appropriate lipid-lowering diet before receiving LOVAZA and should continue this diet during treatment with LOVAZA.

Laboratory studies should be done to ascertain that the lipid levels are consistently abnormal before instituting therapy with LOVAZA. Every attempt should be made to control serum lipids with appropriate diet, exercise, weight loss in obese patients, and control of any medical problems such as diabetes mellitus and hypothyroidism that are contributing to the lipid abnormalities. Medications known to exacerbate hypertriglyceridemia (such as beta blockers, thiazides, estrogens) should be discontinued or changed, if possible, prior to consideration of TG-lowering drug therapy.

## **Limitations of Use:**

The effect of LOVAZA on the risk for pancreatitis has not been determined.

The effect of LOVAZA on cardiovascular mortality and morbidity has not been determined.

## **2 DOSAGE AND ADMINISTRATION**

- Assess TG levels carefully before initiating therapy. Identify other causes (e.g., diabetes mellitus, hypothyroidism, or medications) of high TG levels and manage as appropriate [see *Indications and Usage (1)*].
- Patients should be placed on an appropriate lipid-lowering diet before receiving LOVAZA and should continue this diet during treatment with LOVAZA. In clinical studies, LOVAZA was administered with meals.

The daily dose of LOVAZA is 4 grams/day. The daily dose may be taken as a single 4-gram dose (4 capsules) or as two 2-gram doses (2 capsules given twice daily).

Patients should be advised to swallow LOVAZA capsules whole. Do not break open, crush, dissolve, or chew LOVAZA.

## **3 DOSAGE FORMS AND STRENGTHS**

LOVAZA (omega-3-acid ethyl esters) capsules, USP are supplied as 1 gram transparent, soft-gelatin capsules filled with light-yellow oil and imprinted with “WP34”.

## **4 CONTRAINDICATIONS**

LOVAZA is contraindicated in patients with known hypersensitivity (e.g., anaphylactic reaction) to LOVAZA or any of its components.

## **5 WARNINGS AND PRECAUTIONS**

### **5.1 Monitoring: Laboratory Tests**

In patients with hepatic impairment, alanine aminotransferase (ALT) and aspartate aminotransferase (AST) levels should be monitored periodically during therapy with LOVAZA. In some patients, increases in ALT levels without a concurrent increase in AST levels were observed.

In some patients, LOVAZA increases low-density lipoprotein cholesterol (LDL-C) levels. LDL-C levels should be monitored periodically during therapy with LOVAZA.

Laboratory studies should be performed periodically to measure the patient's TG levels during therapy with LOVAZA.

### **5.2 Fish Allergy**

LOVAZA contains ethyl esters of omega-3 fatty acids (EPA and DHA) obtained from the oil of several fish sources. It is not known whether patients with allergies to fish and/or shellfish, are at increased risk of an allergic reaction to LOVAZA. LOVAZA should be

used with caution in patients with known hypersensitivity to fish and/or shellfish.

### 5.3 Recurrent Atrial Fibrillation (AF) or Flutter

In a double-blind, placebo-controlled trial of 663 subjects with symptomatic paroxysmal AF (n = 542) or persistent AF (n = 121), recurrent AF or flutter was observed in subjects randomized to LOVAZA who received 8 grams/day for 7 days and 4 grams/day thereafter for 23 weeks at a higher rate relative to placebo. Subjects in this trial had median baseline TG levels of 127 mg/dL, had no substantial structural heart disease, were taking no anti-arrhythmic therapy (rate control permitted), and were in normal sinus rhythm at baseline.

At 24 weeks, in the paroxysmal AF stratum, there were 129 (47%) first recurrent symptomatic AF or flutter events on placebo and 141 (53%) on LOVAZA (primary endpoint, HR: 1.19; 95% CI: 0.93, 1.35). In the persistent AF stratum, there were 19 (35%) events on placebo and 34 (52%) events on LOVAZA (HR: 1.63; 95% CI: 0.91, 2.18). For both strata combined, the HR was 1.25; 95% CI: 1, 1.4. Although the clinical significance of these results is uncertain, there is a possible association between LOVAZA and more frequent recurrences of symptomatic AF or flutter in patients with paroxysmal or persistent AF, particularly within the first 2 to 3 months of initiating therapy.

LOVAZA is not indicated for the treatment of AF or flutter.

## 6 ADVERSE REACTIONS

### 6.1 Clinical Trials Experience

Because clinical trials are conducted under widely varying conditions, adverse reaction rates observed in the clinical trials of a drug cannot be directly compared with rates in the clinical trials of another drug and may not reflect the rates observed in practice.

Adverse reactions reported in at least 3% of subjects treated with LOVAZA and at a greater rate than placebo based on pooled data across 23 clinical trials are listed in Table 1.

**Table 1. Adverse Reactions Occurring at Incidence  $\geq$ 3% and Greater than Placebo in Clinical Trials of LOVAZA**

Adverse Reaction <sup>a</sup>	LOVAZA (n = 655)		Placebo (n = 370)	
	n	%	n	%
Eructation	29	4	5	1
Dyspepsia	22	3	6	2
Taste perversion	27	4	1	<1

<sup>a</sup> Trials included subjects with hypertriglyceridemia and severe hypertriglyceridemia.

Additional adverse reactions from clinical trials are listed below:

## Digestive System

Constipation, gastrointestinal disorder, and vomiting.

## Metabolic and Nutritional Disorders

Increased ALT and increased AST.

## Skin

Pruritus and rash.

## **6.2 Postmarketing Experience**

In addition to adverse reactions reported from clinical trials, the events described below have been identified during post-approval use of LOVAZA. Because these events are reported voluntarily from a population of unknown size, it is not possible to reliably estimate their frequency or to always establish a causal relationship to drug exposure.

The following events have been reported: anaphylactic reaction, hemorrhagic diathesis, urticaria.

## **7 DRUG INTERACTIONS**

### **7.1 Anticoagulants or Other Drugs Affecting Coagulation**

Some trials with omega-3-acids demonstrated prolongation of bleeding time. The prolongation of bleeding time reported in these trials has not exceeded normal limits and did not produce clinically significant bleeding episodes. Clinical trials have not been done to thoroughly examine the effect of LOVAZA and concomitant anticoagulants. Patients receiving treatment with LOVAZA and an anticoagulant or other drug affecting coagulation (e.g., anti-platelet agents) should be monitored periodically.

## **8 USE IN SPECIFIC POPULATIONS**

### **8.1 Pregnancy**

#### Risk Summary

–

The available data from published case reports and the pharmacovigilance database on the use of LOVAZA in pregnant women are insufficient to identify a drug-associated risk for major birth defects, miscarriage, or adverse maternal or fetal outcomes. In animal studies, omega-3-acid ethyl esters given orally to female rats prior to mating through lactation did not have adverse effects on reproduction or development when given at doses 5 times the maximum recommended human dose (MRHD) of 4 grams/day, based on a body surface area comparison. Omega-3-acid ethyl esters given orally to rats and rabbits during organogenesis was not teratogenic at clinically relevant exposures, based on body surface area comparison (*see Data*).

The estimated background risk of major birth defects and miscarriage for the indicated population is unknown. In the U.S. general population, the estimated background risk of major birth defects and miscarriage in clinically recognized pregnancies is 2% to 4% and

15% to 20%, respectively.

## Data

*Animal Data:* In female rats given oral doses of omega-3-acid ethyl esters (100, 600, or 2,000 mg/kg/day) beginning 2 weeks prior to mating through lactation, no adverse effects were observed at 2,000 mg/kg/day (5 times the MRHD based on body surface area [ $\text{mg}/\text{m}^2$ ]). In a dose-ranging study, female rats given oral doses of omega-3-acid ethyl esters (1,000, 3,000, or 6,000 mg/kg/day) beginning 2 weeks prior to mating through Postpartum Day 7 had decreased live births (20% reduction) and pup survival to Postnatal Day 4 (40% reduction) at or greater than 3,000 mg/kg/day in the absence of maternal toxicity at 3,000 mg/kg/day (7 times the MRHD based on body surface area [ $\text{mg}/\text{m}^2$ ]).

In pregnant rats given oral doses of omega-3-acid ethyl esters (1,000, 3,000, or 6,000 mg/kg/day) during organogenesis, no adverse effects were observed in fetuses at a maternally toxic dose (increased food consumption) of 6,000 mg/kg/day (14 times the MRHD based on body surface area [ $\text{mg}/\text{m}^2$ ]). In pregnant rats given oral doses of omega-3-acid ethyl esters (100, 600, or 2,000 mg/kg/day) from Gestation Day 14 through Lactation Day 21, no adverse effects were observed at 2,000 mg/kg/day (5 times the MRHD based on body surface area [ $\text{mg}/\text{m}^2$ ]).

In pregnant rabbits given oral doses of omega-3-acid ethyl esters (375, 750, or 1,500 mg/kg/day) during organogenesis, no adverse effects were observed in fetuses given 375 mg/kg/day (2 times the MRHD based on body surface area [ $\text{mg}/\text{m}^2$ ]). However, at higher doses, increases in fetal skeletal variations and reduced fetal growth were evident at maternally toxic doses (reduced food consumption and body weight gain) greater than or equal to 750 mg/kg/day (4 times the MRHD), and embryoletality was evident at 1,500 mg/kg/day (7 times the MRHD).

## **8.2 Lactation**

### Risk Summary

Published studies have detected omega-3 fatty acids, including EPA and DHA, in human milk. Lactating women receiving oral omega-3 fatty acids for supplementation have resulted in higher levels of omega-3 fatty acids in human milk. There are no data available on the effects of omega-3 fatty acid ethyl esters on the breastfed infant or on milk production. The developmental and health benefits of breastfeeding should be considered along with the mother's clinical need for LOVAZA and any potential adverse effects on the breastfed child from LOVAZA or from the underlying maternal condition.

## **8.4 Pediatric Use**

Safety and effectiveness in pediatric patients have not been established.

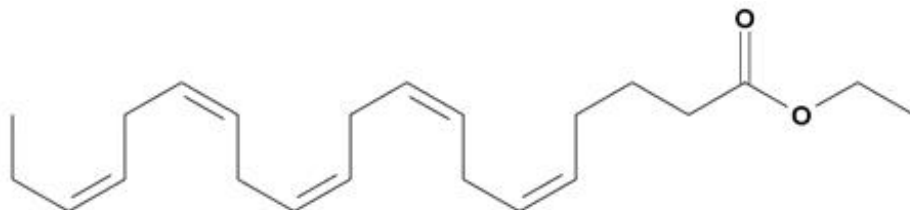
## **8.5 Geriatric Use**

A limited number of subjects older than 65 years were enrolled in the clinical trials of LOVAZA. Safety and efficacy findings in subjects older than 60 years did not appear to differ from those of subjects younger than 60 years.

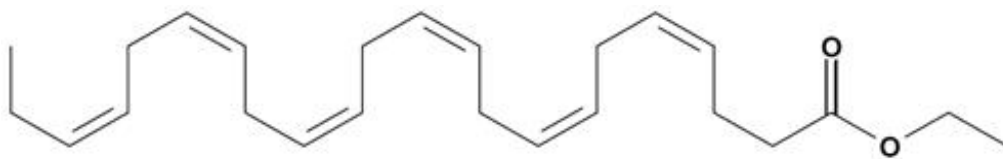
# **11 DESCRIPTION**

LOVAZA, a lipid-regulating agent, is supplied as a liquid-filled gel capsule for oral administration. Each 1 gram capsule of LOVAZA contains at least 900 mg of the ethyl esters of omega-3 fatty acids sourced from fish oils. These are predominantly a combination of ethyl esters of eicosapentaenoic acid (EPA - approximately 465 mg) and docosahexaenoic acid (DHA - approximately 375 mg).

The empirical formula of EPA ethyl ester is  $C_{22}H_{34}O_2$ , and the molecular weight of EPA ethyl ester is 330.51. The structural formula of EPA ethyl ester is:



The empirical formula of DHA ethyl ester is  $C_{24}H_{36}O_2$ , and the molecular weight of DHA ethyl ester is 356.55. The structural formula of DHA ethyl ester is:



LOVAZA capsules also contain the following inactive ingredients: alpha-tocopherol, gelatin, glycerin and purified water (components of the capsule shell).

## 12 CLINICAL PHARMACOLOGY

### 12.1 Mechanism of Action

The mechanism of action of LOVAZA is not completely understood. Potential mechanisms of action include inhibition of acyl-CoA:1,2-diacylglycerol acyltransferase, increased mitochondrial and peroxisomal  $\beta$ -oxidation in the liver, decreased lipogenesis in the liver, and increased plasma lipoprotein lipase activity. LOVAZA may reduce the synthesis of TG in the liver because EPA and DHA are poor substrates for the enzymes responsible for TG synthesis, and EPA and DHA inhibit esterification of other fatty acids.

### 12.3 Pharmacokinetics

#### 12.3 Pharmacokinetics

##### Absorption

In healthy volunteers and in subjects with hypertriglyceridemia, EPA and DHA were absorbed when administered as ethyl esters orally. Omega-3-acids administered as ethyl esters (LOVAZA) induced significant dose-dependent increases in serum phospholipid EPA content, though increases in DHA content were less marked and not dose-

dependent when administered as ethyl esters.

### Specific Populations

*Age:* Uptake of EPA and DHA into serum phospholipids in subjects treated with LOVAZA was independent of age (younger than 49 years versus 49 years and older).

*Male and Female Patients:* Females tended to have more uptake of EPA into serum phospholipids than males. The clinical significance of this is unknown.

*Pediatric Patients:* Pharmacokinetics of LOVAZA have not been studied.

*Patients with Renal or Hepatic Impairment:* LOVAZA has not been studied in patients with renal or hepatic impairment.

### Drug Interaction Studies

*Simvastatin:* In a 14-day trial of 24 healthy adult subjects, daily co-administration of simvastatin 80 mg with LOVAZA 4 grams did not affect the extent (AUC) or rate ( $C_{max}$ ) of exposure to simvastatin or the major active metabolite, beta-hydroxy simvastatin, at steady-state.

*Atorvastatin:* In a 14-day trial of 50 healthy adult subjects, daily co-administration of atorvastatin 80 mg with LOVAZA 4 grams did not affect AUC or  $C_{max}$  of exposure to atorvastatin, 2-hydroxyatorvastatin, or 4-hydroxyatorvastatin at steady-state.

*Rosuvastatin:* In a 14-day trial of 48 healthy adult subjects, daily co-administration of rosuvastatin 40 mg with LOVAZA 4 grams did not affect AUC or  $C_{max}$  of exposure to rosuvastatin at steady-state.

*In vitro* studies using human liver microsomes indicated that clinically significant cytochrome P450-mediated inhibition by EPA/DHA combinations are not expected in humans.

## **13 NONCLINICAL TOXICOLOGY**

### **13.1 Carcinogenesis, Mutagenesis, Impairment of Fertility**

In a rat carcinogenicity study with oral gavage doses of 100, 600, and 2,000 mg/kg/day, males were treated with omega-3-acid ethyl esters for 101 weeks and females for 89 weeks without an increased incidence of tumors (up to 5 times human systemic exposures following an oral dose of 4 grams/day based on a body surface area comparison). Standard lifetime carcinogenicity bioassays were not conducted in mice.

Omega-3-acid ethyl esters were not mutagenic or clastogenic with or without metabolic activation in the bacterial mutagenesis (Ames) test with *Salmonella typhimurium* and *Escherichia coli* or in the chromosomal aberration assay in Chinese hamster V79 lung cells or human lymphocytes. Omega-3-acid ethyl esters were negative in the *in vivo* mouse micronucleus assay.

In a rat fertility study with oral doses of 100, 600, and 2,000 mg/kg/day, males were



treated for 10 weeks prior to mating and females were treated for 2 weeks prior to mating and through lactation. No adverse effect on fertility was observed at 2,000 mg/kg/day (5 times the MRHD of 4 grams/day based on body surface area [mg/m<sup>2</sup>]).

## 14 CLINICAL STUDIES

### 14.1 Severe Hypertriglyceridemia

The effects of LOVAZA 4 grams/day were assessed in 2 randomized, placebo-controlled, double-blind, parallel-group trials of 84 adult subjects (42 on LOVAZA, 42 on placebo) with very high TG levels. Subjects whose baseline TG levels were between 500 and 2,000 mg/dL were enrolled in these 2 trials of 6 and 16 weeks' duration. The median TG and LDL-C levels in these subjects were 792 mg/dL and 100 mg/dL, respectively. Median high-density lipoprotein cholesterol (HDL-C) level was 23 mg/dL.

The changes in the major lipoprotein lipid parameters for the groups receiving LOVAZA or placebo are shown in Table 2.

**Table 2. Median Baseline and Percent Change from Baseline in Lipid Parameters in Subjects with Severe Hypertriglyceridemia ( $\geq 500$  mg/dL)**

Parameter	LOVAZA n = 42		Placebo n = 42		Difference
	BL	% Change	BL	% Change	
TG	816	-44.9	788	+6.7	-51.6
Non-HDL-C	271	-13.8	292	-3.6	-10.2
TC	296	-9.7	314	-1.7	-8
VLDL-C	175	-41.7	175	-0.9	-40.8
HDL-C	22	+9.1	24	0	+9.1
LDL-C	89	+44.5	108	-4.8	+49.3

BL = Baseline (mg/dL); % Change = Median Percent Change from Baseline;

Difference = LOVAZA Median % Change - Placebo Median % Change. TC = Total cholesterol.

VLDL-C = Very-low-density lipoprotein (VLDL) cholesterol.

LOVAZA 4 grams/day reduced median TG, VLDL-C, and non-HDL-C levels and increased median HDL-C from baseline relative to placebo. Treatment with LOVAZA to reduce very high TG levels may result in elevations in LDL-C and non-HDL-C in some individuals. Patients should be monitored to ensure that the LDL-C level does not increase excessively.

The effect of LOVAZA on the risk of pancreatitis has not been determined.

The effect of LOVAZA on cardiovascular mortality and morbidity has not been determined.

## 16 HOW SUPPLIED/STORAGE AND HANDLING

LOVAZA (omega-3-acid ethyl esters) capsules USP, are supplied as 1 gram, transparent, soft-gelatin capsules filled with light-yellow oil and imprinted with “WP34”.

They are available as follows:

Bottles of 60: NDC 69784-420-60

Bottles of 120: NDC 69784-420-12

Bottles of 360: NDC 69784-420-36

Store at 20° to 25°C (68° to 77°F); excursions permitted between 15° to 30°C (59° to 86°F) [see USP Controlled Room Temperature]. Do not freeze. Dispense in a tight, light-resistant container. Protect from light. Keep out of reach of children.

## 17 PATIENT COUNSELING INFORMATION

Advise the patient to read the FDA-approved patient labeling (Patient Information).

### Information for Patients

- LOVAZA should be used with caution in patients with known sensitivity or allergy to fish and/or shellfish [see *Warnings and Precautions (5.2)*].
- Advise patients that use of lipid-regulating agents does not reduce the importance of adhering to diet [see *Dosage and Administration (2)*].
- Advise patients not to alter LOVAZA capsules in any way and to ingest intact capsules only [see *Dosage and Administration (2)*].
  
- Instruct patients to take LOVAZA as prescribed. If a dose is missed, advise patients to take it as soon as they remember. However, if they miss one day of LOVAZA, they should not double the dose when they take it.

Manufactured for:

Woodward Pharma Services LLC

Wixom, MI 48393

Rev. 02-2021-00

## PATIENT INFORMATION

**LOVAZA (LO-VA-ZA)  
(omega-3-acid ethyl esters  
capsules)**

### **What are LOVAZA?**

LOVAZA is a prescription medicine used along with a low-fat and low-cholesterol diet to lower very high triglyceride (fat) levels in adults.

It is not known if LOVAZA changes your risk of having inflammation of your pancreas (pancreatitis).

It is not known if LOVAZA prevents you from having a heart attack or stroke.  
It is not known if LOVAZA is safe and effective in children.

**Who should not take LOVAZA?**

**Do not take LOVAZA** if you are allergic to LOVAZA or any of the ingredients in LOVAZA. See the end of this leaflet for a complete list of ingredients in LOVAZA .

**Before taking LOVAZA, tell your healthcare provider about all of your medical conditions, including if you:**

- have diabetes.
- have a low thyroid problem (hypothyroidism).
- have a liver problem.
- have a pancreas problem.
- have a certain heart rhythm problem called atrial fibrillation or flutter.
- are allergic to fish or shellfish. It is not known if people who are allergic to fish or shellfish are also allergic to LOVAZA.
- are pregnant or plan to become pregnant. It is not known if LOVAZA will harm your unborn baby.
- are breastfeeding or plan to breastfeed. LOVAZA can pass into your breast milk. Talk to your healthcare provider about the best way to feed your baby if you take LOVAZA.

**Tell your healthcare provider about all the medicines you take**, including prescription and over-the-counter medicines, vitamins, and herbal

supplements.

LOVAZA can interact with certain other medicines that you are taking. Using LOVAZA with medicines that affect blood clotting (anticoagulants or blood thinners) may cause serious side effects.

### **How should I take LOVAZA?**

- Take LOVAZA exactly as your healthcare provider tells you to take it.
- You should not take more than 4 capsules of LOVAZA each day. Either take all 4 capsules at one time or 2 capsules two times a day.
- Do not change your dose or stop LOVAZA without talking to your healthcare provider.
- Take LOVAZA with food.
- Take LOVAZA capsules whole. Do not break, open, crush, dissolve, or chew LOVAZA capsules before swallowing. If you cannot swallow LOVAZA capsules whole, tell your healthcare provider. You may need a different medicine.
- If you miss a dose of LOVAZA, take the missed dose as soon as you remember. If you miss one day of LOVAZA, **do not** double your dose the next time you take it.
- Your healthcare provider may start you on a cholesterol-lowering diet before giving you LOVAZA. Stay on this diet while taking LOVAZA.
- Your healthcare provider should do blood tests to check your triglyceride, bad cholesterol (LDL-C), and liver function (ALT and AST) levels while you take LOVAZA.

### **What are the possible side**

## **effects of LOVAZA?**

**LOVAZA may cause serious side effects, including:**

- **changes in certain blood tests.** LOVAZA may cause an increase in the results of blood tests used to check your liver function and your bad cholesterol levels.
- **increased risk of a heart rhythm problem in people who have a heart rhythm problem.** LOVAZA may cause an increase in the frequency of a heart rhythm problem (atrial fibrillation or flutter), especially in the first few months of taking LOVAZA, if you already have a heart rhythm problem.

**The most common side effects of LOVAZA include:**

- burping
- upset stomach
- a change in your sense of taste

These are not all the possible side effects of LOVAZA. Call your doctor for medical advice about side effects. You may report side effects to FDA at 1-800-FDA-1088.

## **How should I store LOVAZA?**

- Store LOVAZA at room temperature between 68°F to 77°F (20°C to 25°C).
- **Do not** freeze LOVAZA.
- Protect from light.
- Safely throw away medicine that is out of date or no longer needed.

**Keep LOVAZA and all medicines out of the reach of children.**

**General information about**

**the safe and effective use of  
LOVAZA**

Medicines are sometimes prescribed for purposes other than those listed in a Patient Information leaflet. Do not use LOVAZA for a condition for which it was not prescribed. Do not give LOVAZA to other people, even if they have the same symptoms you have. It may harm them. You can ask your healthcare provider or pharmacist for information about LOVAZA that is written for health professionals.

For more information call 1-844-700-2472.

**What are the ingredients in  
LOVAZA?**

Active Ingredient: omega-3-acid ethyl esters, mostly EPA and DHA

Inactive Ingredients: alpha-tocopherol, gelatin, glycerin, purified water.

This Patient Information has been approved by the U.S. Food and Drug Administration.

Manufactured for:

Woodward Pharma Services LLC

Wixom, MI 48393

Rev. 02-2021-00

**PACKAGE LABEL.PRINCIPAL DISPLAY PANEL**

NDC 69784-420-12

# Lovaza<sup>®</sup>

(omega-3-acid ethyl esters)  
Capsules

1 gram \*

Swallow capsules whole.

120 Capsules



WOODWARD PHARMA

Rx only

\*Each capsule contains 1 gram omega-3-acid ethyl ester liquid concentrate consisting of at least 900 mg omega-3-acid ethyl esters, USP.

Each capsule provides:  
Eicosapentaenoic acid (EPA) ethyl ester: 465 mg  
Docosahexaenoic acid (DHA) ethyl ester: 375 mg

**Usual Dosage:** See accompanying prescribing information.

**Store at 20° to 25°C (68° to 77°F); excursions permitted between 15° to 30°C (59° to 86°F) [see USP Controlled Room Temperature]. Do not freeze.**

Dispense in a tight light-resistant container.  
Protect from light.

Manufactured for: **Woodward Pharma Services LLC**  
Wixom, MI 48393

Rev. 02-2021-00

Product of the United Kingdom



0.75" x 2.25" Non-Varnish Area  
For Lot No, Exp Date & Serialization

## LOVAZA

omega-3-acid ethyl esters capsule, liquid filled

### Product Information

<b>Product Type</b>	HUMAN PRESCRIPTION DRUG	<b>Item Code (Source)</b>	NDC:69784-420
<b>Route of Administration</b>	ORAL		

### Active Ingredient/Active Moiety

Ingredient Name	Basis of Strength	Strength
<b>OMEGA-3-ACID ETHYL ESTERS</b> (UNII: D87YGH4Z0Q) (OMEGA-3 FATTY ACIDS - UNII:71M78END5S)	OMEGA-3-ACID ETHYL ESTERS	1 g

### Inactive Ingredients

Ingredient Name	Strength
<b>GELATIN</b> (UNII: 2G86QN327L)	
<b>GLYCERIN</b> (UNII: PDC6A3C0OX)	
<b>WATER</b> (UNII: 059QF0KO0R)	
<b>ALPHA-TOCOPHEROL</b> (UNII: H4N855PNZ1)	

### Product Characteristics

<b>Color</b>	yellow (clear)	<b>Score</b>	no score
<b>Shape</b>	CAPSULE	<b>Size</b>	23mm
<b>Flavor</b>		<b>Imprint Code</b>	WP34
<b>Contains</b>			

### Packaging

#	Item Code	Package Description	Marketing Start Date	Marketing End Date

<b>1</b>	NDC:69784-420-12	120 in 1 BOTTLE; Type 0: Not a Combination Product	11/30/2015	
<b>2</b>	NDC:69784-420-36	360 in 1 BOTTLE; Type 0: Not a Combination Product	11/30/2015	
<b>3</b>	NDC:69784-420-60	60 in 1 BOTTLE; Type 0: Not a Combination Product	11/30/2015	

## Marketing Information

Marketing Category	Application Number or Monograph Citation	Marketing Start Date	Marketing End Date
ANDA	ANDA204940	11/30/2015	

**Labeler** - Woodward Pharma Services LLC (080406260)

## Establishment

Name	Address	ID/FEI	Business Operations
Amneal Pharmaceuticals of New York, LLC		123797875	analysis(69784-420) , label(69784-420) , manufacture(69784-420) , pack(69784-420)

Revised: 2/2021

Woodward Pharma Services LLC