

DIAZEPAM - diazepam injection, solution
Henry Schein, Inc.

DIAZEPAM Injection, USP
5mg/mL
Fliptop Vial

Rx only
CIV

WARNING: RISKS FROM CONCOMITANT USE WITH OPIOIDS

Concomitant use of benzodiazepines and opioids may result in profound sedation, respiratory depression, coma, and death [see WARNINGS, PRECAUTIONS; Drug Interactions].

- **Reserve concomitant prescribing of these drugs for use in patients for whom alternative treatment options are inadequate.**
- **Limit dosages and durations to the minimum required.**
- **Follow patients for signs and symptoms of respiratory depression and sedation.**

Diazepam is indicated:

For relief of acute anxiety when rapid action is required

In acute alcohol withdrawal

As a useful adjunct in

- *endoscopic procedures*
- *skeletal muscle spasm associated with local pathology, cerebral palsy, athetosis, stiff-man syndrome, tetanus*
- *status epilepticus and severe recurrent convulsive seizures*

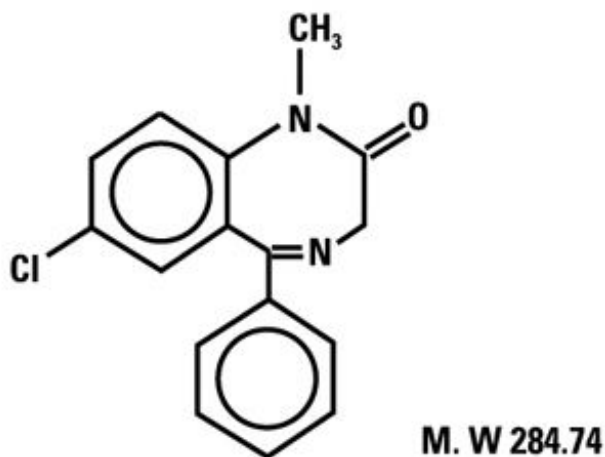
As premedication in patients undergoing

- *surgical procedures*
- *cardioversion*

DESCRIPTION

Diazepam Injection, USP is a sterile, nonpyrogenic solution intended for intramuscular or intravenous administration. Each milliliter (mL) contains 5 mg diazepam; 40% propylene glycol; 10% alcohol; 5% sodium benzoate and benzoic acid added as buffers; and 1.5% benzyl alcohol added as a preservative. pH 6.6 (6.2 to 6.9). Note: Solution may appear colorless to light yellow.

Diazepam is a benzodiazepine derivative chemically designated as 7-chloro-1,3-dihydro-1-methyl-5-phenyl-2H-1,4-benzodiazepin-2-one. It is a colorless crystalline compound, insoluble in water, with the following molecular structure:



CLINICAL PHARMACOLOGY

In animals, diazepam appears to act on parts of the limbic system, the thalamus and hypothalamus, and induces calming effects. Diazepam, unlike chlorpromazine and reserpine, has no demonstrable peripheral autonomic blocking action, nor does it produce extrapyramidal side effects; however, animals treated with diazepam do have a transient ataxia at higher doses. Diazepam was found to have transient cardiovascular depressor effects in dogs. Long-term experiments in rats revealed no disturbances of endocrine function. Injections into animals have produced localized irritation of tissue surrounding injection sites and some thickening of veins after intravenous use.

INDICATIONS AND USAGE

Diazepam is indicated for the management of anxiety disorders or for the short-term relief of the symptoms of anxiety. Anxiety or tension associated with the stress of everyday life usually does not require treatment with an anxiolytic.

In acute alcohol withdrawal, diazepam may be useful in the symptomatic relief of acute agitation, tremor, impending or acute delirium tremens and hallucinosis.

As an adjunct prior to endoscopic procedures if apprehension, anxiety or acute stress reactions are present, and to diminish the patient's recall of the procedures. (See WARNINGS.)

Diazepam is a useful adjunct for the relief of skeletal muscle spasm due to reflex spasm to local pathology (such as inflammation of the muscles or joints, or secondary to trauma); spasticity caused by upper motor neuron disorders (such as cerebral palsy and paraplegia); athetosis; stiff-man syndrome; and tetanus.

Diazepam is a useful adjunct in status epilepticus and severe recurrent convulsive seizures.

Diazepam is a useful premedication (the I.M. route is preferred) for relief of anxiety and tension in patients who are to undergo surgical procedures. Intravenously, prior to cardioversion for the relief of anxiety and tension and to diminish the patient's recall of the procedure.

CONTRAINDICATIONS

Diazepam is contraindicated in patients with a known hypersensitivity to this drug; acute narrow angle glaucoma; and open angle glaucoma unless patients are receiving appropriate therapy.

WARNINGS

Risks from Concomitant Use with Opioids

Concomitant use of benzodiazepines, including diazepam, and opioids may result in profound sedation, respiratory depression, coma, and death. Because of these risks, reserve concomitant prescribing of benzodiazepines and opioids in patients for whom alternative treatment options are inadequate.

Observational studies have demonstrated that concomitant use of opioid analgesics and benzodiazepines increases the risk of drug-related mortality compared to use of opioids alone. If a decision is made to prescribe diazepam concomitantly with opioids, prescribe the lowest effective dosages and minimum durations of concomitant use, and follow patients closely for signs and symptoms of respiratory depression and sedation. Advise both patients and caregivers about the risks of respiratory depression and sedation when diazepam is used with opioids (see PRECAUTIONS; DRUG INTERACTIONS).

Abuse, Misuse, and Addiction

The use of benzodiazepines, including diazepam, exposes users to the risks of abuse, misuse, and addiction, which can lead to overdose or death. Abuse and misuse of benzodiazepines often (but not always) involve the use of doses greater than the maximum recommended dosage and commonly involve concomitant use of other medications, alcohol, and/or illicit substances, which is associated with an increased frequency of serious adverse outcomes, including respiratory depression, overdose, or death (see DRUG ABUSE AND DEPENDENCE; ABUSE).

Before prescribing diazepam and throughout treatment, assess each patient's risk for abuse, misuse, and addiction. Use of diazepam, particularly in patients at elevated risk, necessitates counseling about the risks and proper use of diazepam along with monitoring for signs and symptoms of abuse, misuse, and addiction. Do not exceed the recommended dosing frequency; avoid or minimize concomitant use of CNS depressants and other substances associated with abuse, misuse, and addiction (e.g., opioid analgesics, stimulants); and advise patients on the proper disposal of unused drug. If a substance use disorder is suspected, evaluate the patient and institute (or refer them for) early treatment, as appropriate.

Dependence and Withdrawal Reactions After Use of Diazepam More Frequently Than Recommended

For patients using diazepam more frequently than recommended, to reduce the risk of withdrawal reactions, use a gradual taper to discontinue diazepam (a patient-specific plan should be used to taper the dose).

Patients at an increased risk of withdrawal adverse reactions after benzodiazepine discontinuation or rapid dosage reduction include those who take higher dosages, and those who have had longer durations of use.

Acute Withdrawal Reactions

The continued use of benzodiazepines may lead to clinically significant physical dependence. Although diazepam is indicated only for intermittent use (see INDICATIONS AND USAGE and DOSAGE AND ADMINISTRATION), if used more frequently than recommended, abrupt discontinuation or rapid dosage reduction of diazepam or administration of flumazenil (a benzodiazepine antagonist) may precipitate acute withdrawal reactions, which can be life-threatening (e.g., seizures) (see DRUG ABUSE AND DEPENDENCE; DEPENDENCE).

Protracted Withdrawal Syndrome

In some cases, benzodiazepine users have developed a protracted withdrawal syndrome with withdrawal symptoms lasting weeks to more than 12 months (see DRUG ABUSE AND DEPENDENCE; DEPENDENCE).

When used intravenously, the following procedures should be undertaken to reduce the possibility of venous thrombosis, phlebitis, local irritation, swelling, and, rarely, vascular impairment; the solution should be injected slowly, taking at least one minute for each 5 mg (1 mL) given; do not use small veins, such as those on the dorsum of the hand or wrist; extreme care should be taken to avoid intra-arterial administration or extravasation.

Do not mix or dilute diazepam with other solutions or drugs in syringe or infusion container. If it is not feasible to administer diazepam directly intravenous., it may be injected slowly through the infusion tubing as close as possible to the vein insertion.

Extreme care must be used in administering Diazepam Injection, particularly by the intravenous route, to the elderly, to very ill patients and to those with limited pulmonary reserve because of the possibility that apnea and/or cardiac arrest may occur. Concomitant use of barbiturates, alcohol or other central nervous system depressants increases depression with increased risk of apnea. Resuscitative equipment including that necessary to support respiration should be readily available.

When diazepam is used with a narcotic analgesic, the dosage of the narcotic should be reduced by at least one-third and administered in small increments. In some cases the use of a narcotic may not be necessary.

Diazepam Injection should not be administered to patients in shock, coma, or in acute alcoholic intoxication with depression of vital signs. As is true of most CNS-acting drugs, patients receiving diazepam should be cautioned against engaging in hazardous occupations requiring complete mental alertness, such as operating machinery or driving a motor vehicle.

Tonic status epilepticus has been precipitated in patients treated with intravenous diazepam for petit mal status or petit mal variant status.

Usage in Pregnancy

An increased risk of congenital malformations associated with the use of minor tranquilizers (diazepam, meprobamate and chlordiazepoxide) during the first trimester of pregnancy has been suggested in several studies. Because use of these drugs is rarely a matter of urgency, their use during this period should almost always be avoided. The possibility that a woman of childbearing potential may be pregnant at the time of institution of therapy should be considered. Patients should be advised that if they become pregnant during therapy or intend to become pregnant they should communicate with their physicians about the desirability of discontinuing the drug.

In humans, measurable amounts of diazepam were found in maternal and cord blood, indicating placental transfer of the drug. Until additional information is available, diazepam injection is not recommended for obstetrical use.

Use in Children

Efficacy and safety of parenteral diazepam has not been established in the neonate (30 days or less of age).

Prolonged central nervous system depression has been observed in neonates, apparently due to inability to biotransform diazepam into inactive metabolites.

In pediatric use, in order to obtain maximal clinical effect with the minimum amount of drug and thus to reduce the risk of hazardous side effects, such as apnea or prolonged periods of somnolence, it is recommended that the drug be given slowly over a three-minute period in a dosage not to exceed 0.25 mg/kg. After an interval of 15 to 30 minutes the initial dosage can be safely repeated. If, however, relief of symptoms is not obtained after a third administration, adjunctive therapy appropriate to the condition being treated is recommended.

Benzyl alcohol has been reported to be associated with a fatal gasping syndrome in premature infants.

CLOSE

PRECAUTIONS

Risks from Concomitant Use with Opioids

Advise both patients and caregivers about the risks of potentially fatal respiratory depression and sedation when diazepam is used with opioids and not to use such drugs concomitantly unless supervised by a health care provider. Advise patients not to drive or operate heavy machinery until the effects of concomitant use with the opioid have been determined (see WARNINGS; RISKS FROM CONCOMITANT USE WITH OPIOIDS and PRECAUTIONS; DRUG INTERACTIONS).

Abuse, Misuse, and Addiction

Inform patients that the use of diazepam more frequently than recommended, even at recommended dosages, exposes users to risks of abuse, misuse, and addiction, which can lead to overdose and death, especially when used in combination with other medications (e.g., opioid analgesics), alcohol, and/or illicit substances. Inform patients about the signs and symptoms of benzodiazepine abuse, misuse, and addiction; to seek medical help if they develop these signs and/or symptoms; and on the proper disposal of unused drug (see WARNINGS and DRUG ABUSE AND DEPENDENCE).

Withdrawal Reactions

Inform patients that use of diazepam more frequently than recommended may lead to clinically significant physical dependence and that abrupt discontinuation or rapid dosage reduction of diazepam may precipitate acute withdrawal reactions, which can be life-threatening. Inform patients that in some cases, patients taking benzodiazepines have developed a protracted withdrawal syndrome with withdrawal symptoms lasting weeks to more than 12 months (see WARNINGS and DRUG ABUSE AND DEPENDENCE).

Propylene glycol toxicity has been reported in patients treated with diazepam injection at doses significantly greater than recommended. In these cases, diazepam was being

used to treat alcohol withdrawal symptoms at doses greater than 900 mg/day. Propylene glycol toxicity is associated with an anion gap metabolic acidosis, serum hyperosmolality, and increased lactate. Propylene glycol toxicity can cause acute tubular necrosis (which can progress to multi-organ failure), mental status changes, hypotension, seizures, and cardiac arrhythmias. Patients at high risk for propylene glycol toxicity include those with renal dysfunction, hepatic dysfunction, impaired alcohol dehydrogenase enzymes, or other comorbidities (such as a history of alcoholism).

Drug Interactions

The concomitant use of benzodiazepines and opioids increases the risk of respiratory depression because of actions at different receptor sites in the CNS that control respiration. Benzodiazepines interact at GABAA sites and opioids interact primarily at μ receptors. When benzodiazepines and opioids are combined, the potential for benzodiazepines to significantly worsen opioid-related respiratory depression exists. Limit dosage and duration of concomitant use of benzodiazepines and opioids, and monitor patients closely for respiratory depression and sedation.

Although seizures may be brought under control promptly, a significant proportion of patients experience a return to seizure activity, presumably due to the short-lived effect of diazepam after intravenous administration. The physician should be prepared to re-administer the drug. However, diazepam is not recommended for maintenance, and once seizures are brought under control, consideration should be given to the administration of agents useful in longer term control of seizures.

If diazepam is to be combined with other psychotropic agents or anticonvulsant drugs, careful consideration should be given to the pharmacology of the agents to be employed—particularly with known compounds which may potentiate the action of diazepam, such as phenothiazines, narcotics, barbiturates, MAO inhibitors and other antidepressants. In highly anxious patients with evidence of accompanying depression, particularly those who may have suicidal tendencies, protective measures may be necessary.

The usual precautions in treating patients with impaired hepatic function should be observed. Metabolites of diazepam are excreted by the kidney; to avoid their excess accumulation, caution should be exercised in the administration to patients with compromised kidney function.

Since an increase in cough reflex and laryngospasm may occur with peroral endoscopic procedures, the use of a topical anesthetic agent and the availability of necessary countermeasures are recommended.

Until additional information is available, diazepam injection is not recommended for obstetrical use.

Diazepam injection has produced hypotension or muscular weakness in some patients particularly when used with narcotics, barbiturates or alcohol.

Lower doses (usually 2 mg to 5 mg) should be used for elderly and debilitated patients.

The clearance of diazepam and certain other benzodiazepines can be delayed in association with cimetidine administration. The clinical significance of this is unclear.

ADVERSE REACTIONS

Side effects most commonly reported were drowsiness, fatigue and ataxia; venous thrombosis and phlebitis at the site of injection. Other adverse reactions less frequently reported include: *CNS*: confusion, depression, dysarthria, headache, hypoactivity, slurred speech, syncope, tremor, vertigo. *G.I.*: constipation, nausea. *G.U.*: incontinence, changes in libido, urinary retention. *Cardiovascular*: bradycardia, cardiovascular collapse, hypotension. *EENT*: blurred vision, diplopia, nystagmus. *Skin*: urticaria, skin rash. *Other*: hiccups, changes in salivation, neutropenia, jaundice. Paradoxical reactions such as acute hyperexcited states, anxiety, hallucinations, increased muscle spasticity, insomnia, rage, sleep disturbances and stimulation have been reported; should these occur, use of the drug should be discontinued. Minor changes in EEG patterns, usually low-voltage fast activity, have been observed in patients during and after diazepam therapy and are of no known significance.

In peroral endoscopic procedures, coughing, depressed respiration, dyspnea, hyperventilation, laryngospasm and pain in throat or chest have been reported.

Because of isolated reports of neutropenia and jaundice, periodic blood counts and liver function tests are advisable during long-term therapy.

DRUG ABUSE AND DEPENDENCE

Controlled Substance

Diazepam Injection is a schedule IV controlled substance.

Abuse

Diazepam is a benzodiazepine and a CNS depressant with a potential for abuse and addiction. Abuse is the intentional, non-therapeutic use of a drug, even once, for its desirable psychological or physiological effects. Misuse is the intentional use, for therapeutic purposes, of a drug by an individual in a way other than prescribed by a health care provider or for whom it was not prescribed. Drug addiction is a cluster of behavioral, cognitive, and physiological phenomena that may include a strong desire to take the drug, difficulties in controlling drug use (e.g., continuing drug use despite harmful consequences, giving a higher priority to drug use than other activities and obligations), and possible tolerance or physical dependence. Even taking benzodiazepines as prescribed may put patients at risk for abuse and misuse of their medication. Abuse and misuse of benzodiazepines may lead to addiction.

Abuse and misuse of benzodiazepines often (but not always) involve the use of doses greater than the maximum recommended dosage and commonly involve concomitant use of other medications, alcohol, and/or illicit substances, which is associated with an increased frequency of serious adverse outcomes, including respiratory depression, overdose, or death. Benzodiazepines are often sought by individuals who abuse drugs and other substances, and by individuals with addictive disorders (see WARNINGS; ABUSE, MISUSE, AND ADDICTION).

The following adverse reactions have occurred with benzodiazepine abuse and/or misuse: abdominal pain, amnesia, anorexia, anxiety, aggression, ataxia, blurred vision, confusion, depression, disinhibition, disorientation, dizziness, euphoria, impaired concentration and memory, indigestion, irritability, muscle pain, slurred speech, tremors, and vertigo.

The following severe adverse reactions have occurred with benzodiazepine abuse and/or

misuse: delirium, paranoia, suicidal ideation and behavior, seizures, coma, breathing difficulty, and death. Death is more often associated with polysubstance use (especially benzodiazepines with other CNS depressants such as opioids and alcohol).

Dependence

Physical Dependence After Use of Diazepam More Frequently Than Recommended
Diazepam may produce physical dependence if used more frequently than recommended. Physical dependence is a state that develops as a result of physiological adaptation in response to repeated drug use, manifested by withdrawal signs and symptoms after abrupt discontinuation or a significant dose reduction of a drug. Although diazepam is indicated only for intermittent use (see INDICATIONS AND USAGE and DOSAGE AND ADMINISTRATION), if used more frequently than recommended, abrupt discontinuation or rapid dosage reduction or administration of flumazenil, a benzodiazepine antagonist, may precipitate acute withdrawal reactions, including seizures, which can be life-threatening. Patients at an increased risk of withdrawal adverse reactions after benzodiazepine discontinuation or rapid dosage reduction include those who take higher dosages (i.e., higher and/or more frequent doses) and those who have had longer durations of use (see WARNINGS; DEPENDENCE AND WITHDRAWAL REACTIONS).

For patients using diazepam more frequently than recommended, to reduce the risk of withdrawal reactions, use a gradual taper to discontinue diazepam (see WARNINGS; DEPENDENCE AND WITHDRAWAL REACTIONS).

Acute Withdrawal Signs and Symptoms

Acute withdrawal signs and symptoms associated with benzodiazepines have included abnormal involuntary movements, anxiety, blurred vision, depersonalization, depression, derealization, dizziness, fatigue, gastrointestinal adverse reactions (e.g., nausea, vomiting, diarrhea, weight loss, decreased appetite), headache, hyperacusis, hypertension, irritability, insomnia, memory impairment, muscle pain and stiffness, panic attacks, photophobia, restlessness, tachycardia, and tremor. More severe acute withdrawal signs and symptoms, including life-threatening reactions, have included catatonia, convulsions, delirium tremens, depression, hallucinations, mania, psychosis, seizures, and suicidality.

Protracted Withdrawal Syndrome

Protracted withdrawal syndrome associated with benzodiazepines is characterized by anxiety, cognitive impairment, depression, insomnia, formication, motor symptoms (e.g., weakness, tremor, muscle twitches), paresthesia, and tinnitus that persists beyond 4 to 6 weeks after initial benzodiazepine withdrawal. Protracted withdrawal symptoms may last weeks to more than 12 months. As a result, there may be difficulty in differentiating withdrawal symptoms from potential re-emergence or continuation of symptoms for which the benzodiazepine was being used.

Tolerance

Tolerance to diazepam may develop after use more frequently than recommended. Tolerance is a physiological state characterized by a reduced response to a drug after repeated administration (i.e., a higher dose of a drug is required to produce the same effect that was once obtained at a lower dose).

Tolerance to the therapeutic effect of benzodiazepines may develop; however, little tolerance develops to the amnestic reactions and other cognitive impairments caused by benzodiazepines.

Dosage And Administration

Dosage should be individualized for maximum beneficial effect. The usual recommended dose in older children and adults ranges from 2 mg to 20 mg IM or IV, depending on the indication and its severity. In some conditions, e.g., tetanus, larger doses may be required. (See dosage for specific indications.) In acute conditions the injection may be repeated within one hour although an interval of 3 to 4 hours is usually satisfactory. Lower doses (usually 2 mg to 5 mg) and slow increase in dosage should be used for elderly or debilitated patients and when other sedative drugs are administered. (See WARNINGS and ADVERSE REACTIONS.)

For dosage in infants above the age of 30 days and children, see the specific indications below. When intravenous use is indicated, facilities for respiratory assistance should be readily available.

Intramuscular: Diazepam Injection, USP should be injected deeply into the muscle.

Intravenous use: (See WARNINGS, particularly for use in children.) The solution should be injected slowly, taking at least one minute for each 5 mg (1 mL) given. Do not use small veins, such as those on the dorsum of the hand or wrist. Extreme care should be taken to avoid intra-arterial administration or extravasation.

Do not mix or dilute diazepam with other solutions or drugs in syringe or infusion flask. If it is not feasible to administer diazepam directly IV., it may be injected slowly through the infusion tubing as close as possible to the vein insertion.

INDICATION	USUAL ADULT DOSAGE	DO SAGE RANGE IN CHILDREN (IV administration should be made slowly)
Moderate Anxiety Disorders and Symptoms of Anxiety	2 mg to 5 mg, IM or IV. Repeat in 3 to 4 hours, if necessary.	
Severe Anxiety Disorders and Symptoms of Anxiety	5 mg to 10 mg, IM or IV. Repeat in 3 to 4 hours, if necessary.	
Acute Alcohol Withdrawal: As an aid in symptomatic relief of acute agitation, tremor, impending or acute delirium tremens and hallucinosis.	10 mg, IM or IV, initially, then 5 mg to 10 mg in 3 to 4 hours, if necessary.	
Endoscopic Procedures: Adjunctively, if apprehension, gagging or acute stress reactions are present prior to endoscopic procedures. Dosage of narcotics should be reduced by at least a third and in some cases may be omitted. See PRECAUTIONS for peroral procedures.	Titrate IV. dosage to desired sedative response, such as slurring of speech, with slow administration immediately prior to the procedure. Generally 10 mg or less is adequate, but up to 20 mg IV. may be given, particularly when concomitant narcotics are omitted. If IV cannot be used, 5 mg to 10 mg IM approximately 30 minutes prior to the procedure.	
Muscle Spasm: Associated with local pathology, cerebral palsy, athetosis, stiff-man syndrome or tetanus.	5 mg to 10 mg, IM or IV initially, then 5 mg to 10 mg in 3 to 4 hours, if necessary. For tetanus, larger doses may be required.	For tetanus in infants over 30 days of age, 1 mg to 2 mg IM or IV, slowly, repeated every 3 to 4 hours as necessary. In children 5 years or older, 5 mg to 10 mg repeated every 3 to 4 hours may be required to control tetanus spasms. Respiratory assistance should be available.

<p><i>Status Epilepticus and Severe Recurrent Convulsive Seizures:</i> In the convulsing patient, the IV route is by far preferred. This injection should be administered slowly. However, if IV administration is impossible, the IM route may be used.</p>	<p>5 mg to 10 mg initially (IV preferred). This injection may be repeated if necessary at 10 to 15 minute intervals up to a maximum dose of 30 mg. If necessary, therapy with diazepam may be repeated in 2 to 4 hours; however, residual active metabolites may persist, and readministration should be made with this consideration. Extreme caution must be exercised with individuals with chronic lung disease or unstable cardiovascular status.</p>	<p>Infants over 30 days of age and children under 5 years, 0.2 mg to 0.5 mg slowly every 2 to 5 minutes up to a maximum of 5 mg (IV preferred). Children 5 years or older, 1 mg every 2 to 5 minutes up to a maximum of 10 mg (slow IV administration preferred). Repeat in 2 to 4 hours if necessary. EEG monitoring of the seizure may be helpful.</p>
<p><i>Preoperative Medication:</i> To relieve anxiety and tension. (If atropine, scopolamine or other premedications are desired, they must be administered in separate syringes.)</p>	<p>10 mg, IM (preferred route), before surgery.</p>	
<p><i>Cardioversion:</i> To relieve anxiety and tension and to reduce recall of procedure.</p>	<p>5 mg to 15 mg, IV, within 5 to 10 minutes prior to the procedure.</p>	

MANAGEMENT OF OVERDOSAGE

Manifestations of diazepam overdose include somnolence, confusion, coma, and diminished reflexes. Respiration, pulse and blood pressure should be monitored, as in all cases of drug overdose, although, in general, these effects have been minimal. General supportive measures should be employed, along with intravenous fluids, and an adequate airway maintained. Hypotension may be combated by the use of norepinephrine or metaraminol. Dialysis is of limited value.

Flumazenil, a specific benzodiazepine receptor antagonist, is indicated for the complete or partial reversal of the sedative effects of benzodiazepines and may be used in situations when an overdose with a benzodiazepine is known or suspected. Prior to the administration of flumazenil, necessary measures should be instituted to secure airway, ventilation, and intravenous access. Flumazenil is intended as an adjunct to, not as a substitute for, proper management of benzodiazepine overdose. Patients treated with flumazenil should be monitored for re-sedation, respiratory depression, and other residual benzodiazepine effects for an appropriate period after treatment. **The prescriber should be aware of a risk of seizure in association with flumazenil treatment, particularly in long-term benzodiazepine users and in cyclic antidepressant overdose.** The complete flumazenil package insert including **CONTRAINDICATIONS, WARNINGS, and PRECAUTIONS** should be

consulted prior to use.

HOW SUPPLIED

Diazepam Injection, USP is supplied as follows:

10 mL multiple dose vials containing 50 mg (5 mg/mL)

Box of 10 Fliptop Vial NDC 0409-3213-12

Store at 20 to 25°C (68 to 77°F). [See USP Controlled Room Temperature.]

Protect from light.

Product repackaged by: Henry Schein, Inc., Bastian, VA 24314

From Original Manufacturer/Distributor's NDC and Unit of Sale	To Henry Schein Repackaged Product NDC and Unit of Sale	Total Strength/Total Volume (Concentration) per unit
NDC 0409-3213-12 Box of 10 Fliptop Vial	NDC 0404-9848-10 1 10 mL multiple dose vial in a bag (Vial bears NDC 0409-3213- 11)	50 mg (5 mg/mL)

ANIMAL PHARMACOLOGY

Oral LD₅₀ of diazepam is 720 mg/kg in mice and 1240 mg/kg in rats. Intraperitoneal administration of 400 mg/kg to a monkey resulted in death on the sixth day.

Reproduction Studies: A series of rat reproduction studies was performed with diazepam in oral doses of 1, 10, 80 and 100 mg/kg given for periods ranging from 60-228 days prior to mating. At 100 mg/kg there was a decrease in the number of pregnancies and surviving offspring in these rats. These effects may be attributable to prolonged sedative activity, resulting in lack of interest in mating and lessened maternal nursing and care of the young. Neonatal survival of rats at doses lower than 100 mg/kg was within normal limits. Several neonates, both controls and experimentals, in these rat reproduction studies showed skeletal or other defects. Further studies in rats at doses up to and including 80 mg/kg/day did not reveal significant teratological effects on the offspring. Rabbits were maintained on doses of 1, 2, 5 and 8 mg/kg from day 6 through day 18 of gestation. No adverse effects on reproduction and no teratological changes were noted.


This product's labeling may have been updated. For the most recent prescribing information, please visit www.pfizer.com.

Distributed by Hospira, Inc., Lake Forest, IL 60045 USA

LAB-0837-3.0

Revised: February 2021

Sample Package Label

DIAZEPAM 50mg/10ml	INJECTION, USP Multiple Dose Flip Top Vial
5 mg/ml 10 ml	
<p>PROTECT FROM LIGHT. FOR IV OR IM USE. STERILE, NONPYROGENIC. NOTE: SOLUTION MAY APPEAR COLORLESS TO LIGHT YELLOW.</p> <p>Keep out of children's reach.</p> <p>Store at 20 to 25C (66 to 77F). (See USP Controlled Room Temperature.)</p>	
<p>NDC: </p> <p style="text-align: center;">0404-9848-10</p>	<p style="writing-mode: vertical-rl; transform: rotate(180deg);">MANUFACTURER INFORMATION</p> <p style="writing-mode: vertical-rl; transform: rotate(180deg);">Mfr: Hospira</p> <p style="writing-mode: vertical-rl; transform: rotate(180deg);">ORIG MFG LOT: XX-XXX-XX</p> <p style="writing-mode: vertical-rl; transform: rotate(180deg);">NDC: 0409-3213-12</p>

CIV RX ONLY

ITEM# :2480818
 LOT# XXXXXXXXX
 EXP: mm-dd-yy

SEE MANUFACTURER'S INSERT FOR COMPLETE PRODUCT AND PRESCRIBING INFORMATION



Packaged By
 Henry Schein, Inc.
 80 Summit View Lane
 Bastian, VA 24314

GTIN:(01)XXXXXXXXXXXXXXXXXX
 SER:(21)XXXXXXXXXXXXXXXXXX
 LOT:(10)XXXXXX
 EXP:(17)XXXXXX

DIAZEPAM			
diazepam injection, solution			
Product Information			
Product Type	HUMAN PRESCRIPTION DRUG	Item Code (Source)	NDC:0404-9848(NDC:0409-3213)
Route of Administration	INTRAVENOUS, INTRAMUSCULAR	DEA Schedule	CIV
Active Ingredient/Active Moiety			
	Ingredient Name	Basis of Strength	Strength
	Diazepam (UNII: Q3JTX2Q7TU) (Diazepam - UNII:Q3JTX2Q7TU)	Diazepam	5 mg in 1 mL
Packaging			

#	Item Code	Package Description	Marketing Start Date	Marketing End Date
1	NDC:0404-9848-10	1 in 1 BAG	01/10/2022	
1		10 mL in 1 VIAL, MULTI-DOSE; Type 0: Not a Combination Product		

Marketing Information

Marketing Category	Application Number or Monograph Citation	Marketing Start Date	Marketing End Date
ANDA	ANDA071583	01/10/2022	

Labeler - Henry Schein, Inc. (012430880)

Revised: 10/2023

Henry Schein, Inc.