

**C08 CALCIUM METABOLISM- abies alba leafy twig, calcarea acetica, calcarea arsenicica, calcarea carbonica, calcarea fluorica, calcarea hypophosphorosa, calcarea iodata, calcarea muriatica, calcarea oxalica, calcarea phosphorica, calcarea picrata, calcarea sulphurica, calculus bovis, calendula officinalis, cholesterinum, hamamelis virginiana, hepar sulphuris calcareum, lapis albus, silicea, sulphur iodatum, sus scrofa parathyroid gland, symphytum officinale, urtica urens, vitamin d solution/ drops**

**Apex Energetics Inc.**

*Disclaimer: This homeopathic product has not been evaluated by the Food and Drug Administration for safety or efficacy. FDA is not aware of scientific evidence to support homeopathy as effective.*

-----

## **C08**

<b>Active Ingredients</b>	
Abies Alba Leafy Twig	3X 6X 8X
Calcarea Acetica	6X 8X 12X
Calcarea Arsenicica	6X 8X
Calcarea Carbonica	8X 12X 15X
Calcarea Fluorica	8X 12X 15X
Calcarea Hypophosphorosa	8X 12X
Calcarea Iodata	6X 8X 12X
Calcarea Muriatica	8X 10X 12X
Calcarea Oxalica	8X 10X 12X
Calcarea Phosphorica	8X 12X 15X
Calcarea Picrata	9X 12X
Calcarea Sulphurica	8X 12X
Calculus Bovis	9X 12X 15X
Calendula Officinalis	4X 6X
Cholesterinum	6X 8X 12X 15X
Hamamelis Virginiana	4X 6X
Hepar Sulphuris Calcareum	8X 12X 15X
Lapis Albus	6X 8X 12X
Silicea	6X 8X 12X
Sulphur Iodatum	6X 8X 12X
Sus Scrofa Parathyroid Gland	4C 7C 9C
Symphytum Officinale	4X 6X
Urtica Urens	8X 12X
Vitamin D	6X 8X 12X

### **Uses:**

For temporary relief of minor:

spasms\*

cramps\*

nervous irritability\*

menstrual discomfort\*

\*Claims based on traditional homeopathic practice, not accepted medical evidence. Not FDA evaluated.

### **Warnings:**

**If pregnant or breastfeeding**, ask a health professional before use.

Do not use if clear seal over the cap is broken or missing.

**Keep out of reach of children.** In case of overdose, get medical help or contact a Poison Control Center right away.

**Stop use and ask a doctor if** spasms, cramps, nervous irritability, menstrual discomfort, or other symptoms do not improve within 7 days or are accompanied by fever.

### **Directions:**

Adults & children ages 12 years and over: Take 10 drops under the tongue 3-4 times a day, or as directed by your healthcare professional. Consult a physician for use in children under 12 years of age.

### **Inactive Ingredients**

alcohol (20% by volume), distilled water

Distributed by Apex Energetics. Questions?

16592 Hale Ave., Irvine, CA 92606, USA

FUTUREPLEX® C08

ANTITOX®

CALCIUM METABOLISM™

Homeopathic Formula

Spasms\*

Cramps\*

Nervous Irritability\*

1 fl oz (30 mL)

Alcohol 20% by Volume

LT1 **Drug Facts (continued)**

**Uses:** For temporary relief of minor: • spasms\* • cramps\* • nervous irritability\* • menstrual discomfort\*

**Warnings:** If pregnant or breastfeeding, ask a health professional before use. Do not use if clear seal over the cap is broken or missing. **Keep out of reach of children.** In case of overdose, get medical help or contact a Poison Control Center right away. **Stop use and ask a doctor** if spasms, cramps, nervous irritability, menstrual discomfort, or other symptoms do not improve within 7 days or are accompanied by fever.

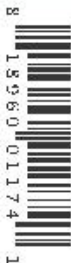
**Directions:** Adults & children ages 12 years and over: Take 10 drops under the tongue 3-4 times a day, or as directed by your healthcare professional. Consult a physician for use in children under 12 years of age.

**Inactive Ingredients** alcohol (20% by volume), distilled water

\*Claims based on traditional homeopathic practice, not accepted medical evidence. Not FDA evaluated.

Distributed by Apex Energetics. Questions? 16592 Hale Ave., Irvine, CA 92606, USA

© 2021 Apex Energetics



**FUTUREPLEX<sup>®</sup> C08  
ANTITOX<sup>®</sup>**



**CALCIUM  
METABOLISM<sup>™</sup>**

Homeopathic Formula

Spasms\* • Cramps\*  
Nervous Irritability\*

1 fl oz (30 mL)

Alcohol 20% by Volume

**Drug Facts**

C0821-0305

**Active Ingredients**

Abies Alba Leafy Twig	3X 6X 8X
Calcarea Acetica	6X 8X 12X
Calcarea Arsenicica	6X 8X
Calcarea Carbonica	8X 12X 15X
Calcarea Fluonica	8X 12X 15X
Calcarea Hypophosphorosa	8X 12X
Calcarea Iodata	6X 8X 12X
Calcarea Muriatica	8X 10X 12X
Calcarea Oxalica	8X 10X 12X
Calcarea Phosphorica	8X 12X 15X
Calcarea Picrata	9X 12X
Calcarea Sulphurica	8X 12X
Calculus Bovis	9X 12X 15X
Calendula Officinalis	4X 6X
Cholesterinum	6X 8X 12X 15X
Hamamelis Virginiana	4X 6X
Hepar Sulphuris Calcareum	8X 12X 15X
Lapis Albus	6X 8X 12X
Silicea	6X 8X 12X
Sulphur Iodatum	6X 8X 12X
Sus Scrofa Parathyroid Gland	4C 7C 9C
Symphytum Officinale	4X 6X
Urtica Urens	8X 12X
Vitamin D	6X 8X 12X

**C08 CALCIUM METABOLISM**

abies alba leafy twig, calcarea acetica, calcarea arsenicica, calcarea carbonica, calcarea fluorica, calcarea hypophosphorosa, calcarea iodata, calcarea muriatica, calcarea oxalica, calcarea phosphorica, calcarea picrata, calcarea sulphurica, calculus bovis, calendula officinalis, cholesterinum, hamamelis virginiana, hepar sulphuris calcareum, lapis albus, silicea, sulphur iodatum, sus scrofa parathyroid gland, symphytum officinale, urtica urens, vitamin d solution/ drops

**Product Information**

<b>Product Type</b>	HUMAN OTC DRUG	<b>Item Code (Source)</b>	NDC:63479-0308
<b>Route of Administration</b>	SUBLINGUAL		

**Active Ingredient/Active Moiety**

Ingredient Name	Basis of Strength	Strength
<b>ABIES ALBA LEAFY TWIG</b> (UNII: CE3G3J56LR) (ABIES ALBA LEAFY TWIG - UNII:CE3G3J56LR)	ABIES ALBA LEAFY TWIG	8 [hp_X] in 1 mL
<b>CALCIUM ACETATE</b> (UNII: Y882YXF34X) (CALCIUM CATION - UNII:2M83C4R6Z B)	CALCIUM ACETATE	12 [hp_X] in 1 mL
<b>CALCIUM HYPOPHOSPHITE</b> (UNII: CUI83R2732) (CALCIUM CATION - UNII:2M83C4R6Z B)	CALCIUM CATION	12 [hp_X] in 1 mL
<b>CALCIUM CHLORIDE</b> (UNII: M410D6VV5M) (CALCIUM CATION - UNII:2M83C4R6Z B)	CALCIUM CHLORIDE	12 [hp_X] in 1 mL
<b>CALCIUM OXALATE MONOHYDRATE</b> (UNII: 4PP86KK527) (CALCIUM CATION - UNII:2M83C4R6Z B)	CALCIUM CATION	12 [hp_X] in 1 mL
<b>TRIBASIC CALCIUM PHOSPHATE</b> (UNII: 91D9GV0Z28) (PHOSPHATE ION - UNII:NK08V8K8HR)	TRIBASIC CALCIUM PHOSPHATE	15 [hp_X] in 1 mL
<b>CALCIUM PICRATE</b> (UNII: 53D441QVT8) (CALCIUM PICRATE - UNII:53D441QVT8)	CALCIUM PICRATE	12 [hp_X] in 1 mL
<b>CALENDULA OFFICINALIS FLOWERING TOP</b> (UNII: 18E7415PXQ) (CALENDULA OFFICINALIS FLOWERING TOP - UNII:18E7415PXQ)	CALENDULA OFFICINALIS FLOWERING TOP	6 [hp_X] in 1 mL
<b>CALCIUM HEXAFLUOROSILICATE</b> (UNII: 2NVP93XVQ3) (CALCIUM HEXAFLUOROSILICATE - UNII:2NVP93XVQ3)	CALCIUM HEXAFLUOROSILICATE	12 [hp_X] in 1 mL
<b>SULFUR IODIDE</b> (UNII: L6L8KA2AA0) (SULFUR IODIDE - UNII:L6L8KA2AA0)	SULFUR IODIDE	12 [hp_X] in 1 mL

<b>CALCIUM SULFATE ANHYDROUS</b> (UNII: E934B3V59H) (CALCIUM CATION - UNII:2M83C4R6ZB)	CALCIUM SULFATE ANHYDROUS	12 [hp_X] in 1 mL
<b>BOS TAURUS GALLSTONE</b> (UNII: 4162LZ0N4O) (BOS TAURUS GALLSTONE - UNII:4162LZ0N4O)	BOS TAURUS GALLSTONE	15 [hp_X] in 1 mL
<b>URTICA URENS</b> (UNII: IHN2NQ5OF9) (URTICA URENS - UNII:IHN2NQ5OF9)	URTICA URENS	12 [hp_X] in 1 mL
<b>VITAMIN D</b> (UNII: 9VU1KI44GP) (VITAMIN D - UNII:9VU1KI44GP)	VITAMIN D	12 [hp_X] in 1 mL
<b>CHOLESTEROL</b> (UNII: 97C5T2UQ7J) (CHOLESTEROL - UNII:97C5T2UQ7J)	CHOLESTEROL	15 [hp_X] in 1 mL
<b>CALCIUM SULFIDE</b> (UNII: 1MBW07J51Q) (CALCIUM SULFIDE - UNII:1MBW07J51Q)	CALCIUM SULFIDE	15 [hp_X] in 1 mL
<b>CALCIUM ARSENATE</b> (UNII: 95OX15I8ZU) (ARSENATE ION - UNII:G1DBI405OK)	CALCIUM ARSENATE	8 [hp_X] in 1 mL
<b>CALCIUM IODIDE</b> (UNII: 8EKI9QEE2H) (CALCIUM CATION - UNII:2M83C4R6ZB)	CALCIUM IODIDE	12 [hp_X] in 1 mL
<b>OYSTER SHELL CALCIUM CARBONATE, CRUDE</b> (UNII: 2E32821G6I) (OYSTER SHELL CALCIUM CARBONATE, CRUDE - UNII:2E32821G6I)	OYSTER SHELL CALCIUM CARBONATE, CRUDE	15 [hp_X] in 1 mL
<b>HAMAMELIS VIRGINIANA ROOT BARK/STEM BARK</b> (UNII: T7S323PKJS) (HAMAMELIS VIRGINIANA ROOT BARK/STEM BARK - UNII:T7S323PKJS)	HAMAMELIS VIRGINIANA ROOT BARK/STEM BARK	6 [hp_X] in 1 mL
<b>SILICON DIOXIDE</b> (UNII: ETJ7Z6XBU4) (SILICON DIOXIDE - UNII:ETJ7Z6XBU4)	SILICON DIOXIDE	12 [hp_X] in 1 mL
<b>CALCIUM FLUORIDE</b> (UNII: O3B55K4YKI) (FLUORIDE ION - UNII:Q80VPU408O)	CALCIUM FLUORIDE	15 [hp_X] in 1 mL
<b>SUS SCROFA PARATHYROID GLAND</b> (UNII: 2KBE35NE8S) (SUS SCROFA PARATHYROID GLAND - UNII:2KBE35NE8S)	SUS SCROFA PARATHYROID GLAND	9 [hp_C] in 1 mL
<b>COMFREY ROOT</b> (UNII: M9VVZ08EKQ) (COMFREY ROOT - UNII:M9VVZ08EKQ)	COMFREY ROOT	6 [hp_X] in 1 mL

### Inactive Ingredients

Ingredient Name	Strength
<b>ALCOHOL</b> (UNII: 3K9958V90M)	
<b>WATER</b> (UNII: 059QF0KO0R)	

### Packaging

#	Item Code	Package Description	Marketing Start Date	Marketing End Date
1	NDC:63479-0308-1	30 mL in 1 BOTTLE, GLASS; Type 0: Not a Combination Product	08/15/1988	

### Marketing Information

Marketing Category	Application Number or Monograph Citation	Marketing Start Date	Marketing End Date
unapproved homeopathic		08/15/1988	

**Labeler** - Apex Energetics Inc. (195816384)