

**LBEL REGRESSION JOUR PROTECTIVE COMPLEX WITH SPF 15 FACIAL DAY  
NORMAL TO COMBINATION SKIN - octinoxate, octisalate, oxybenzone lotion  
Ventura International, LTD**

*Disclaimer: Most OTC drugs are not reviewed and approved by FDA, however they may be marketed if they comply with applicable regulations and policies. FDA has not evaluated whether this product complies.*

-----

**L'BEL REGRESSION JOUR Protective Complex With SPF 15 Facial Day Lotion Normal to Combination Skin**

**L'BEL REGRESSION JOUR Protective Complex With SPF 15 Facial Day Lotion Normal to Combination Skin**

**Active Ingredients**

Octinoxate (7.5%)

Octisalate (4%)

Oxybenzone (4%)

**Uses**

- Helps prevent sunburn.

**Warnings**

- Skin Cancer / Skin Aging Alert: Spending time in the sun increases your risk of skin cancer and early skin aging. This product has been shown only to help prevent sunburn, not skin cancer or early skin aging.
- For external use only.

**Do not use**

on damaged or broken skin.

**When using this product**

keep out of eyes. Rinse with water to remove.

**Stop use and ask a doctor if**

rash occurs.

**Keep out of reach of children.**

If swallowed, get medical help or contact a Poison Control Center right away.

**Directions**

- Apply liberally and evenly 15 minutes before sun exposure.
- Apply after cleansing and toning on face and neck
- Reapply at least every 2 hours.
- Use a water resistant sunscreen if swimming or sweating.
- Children under 6 months of age: Ask a doctor.

## Other information

- Protect the product in this container from excessive heat and direct sun.
- Apply in the morning at the end of your skin care routine.
- Apply with the fingertips, spreading softly throughout the face until completely absorbed

## Inactive Ingredients

AQUA (WATER), GLYCINE SOJA PROTEIN (GLYCINE SOJA (SOYBEAN) PROTEIN), C12-15 ALKYL BENZOATE, PISUM SATIVUM EXTRACT (PISUM SATIVUM (PEA) EXTRACT), CYCLOHEXASILOXANE, DIMETHICONE, MANNITOL, CETEARYL ALCOHOL, HDI/TRIMETHYLOL HEXYLLACTONE CROSSPOLYMER, PHENOXYETHANOL, SODIUM ACRYLATE/ACRYLOYLDIMETHYLT AURATE/DIMETHYLACRYLAMIDE CROSSPOLYMER, C20-22 ALKYL PHOSPHATE, GLYCERYL STEARATE, HYDROXYETHYL ACRYLATE/SODIUM ACRYLOYLDIMETHYL TAURATE COPOLYMER, C20-22 ALCOHOLS, TRIETHANOLAMINE, ISOHEXADECANE, METHYL PARABEN, C14-22 ALCOHOLS, CETEARYL GLUCOSIDE, HYDROLYZED ADANSONIA DIGITATA EXTRACT, BUTYL PARABEN, CYCLOPENTASILOXANE, CHLORPHENESIN, XANTHAN GUM, PROPYL PARABEN, ACRYLATES/C10-30 ALKYL ACRYLATE CROSSPOLYMER, DISODIUM EDTA, PARFUM (FRAGRANCE), SORBIC ACID, POLYSORBATE 60, CYCLODEXTRIN, C12-20 ALKYL GLUCOSIDE, FAEX EXTRACT (YEAST EXTRACT), HYDROLYZED ALGIN, ETHYL PARABEN, CHLORELLA VULGARIS EXTRACT, MARIS AQUA (SEA WATER), ISOBUTYL PARABEN, SILICA, DISODIUM SUCCINATE, CI 42090 (BLUE 1)

## Purpose

Sunscreen

**Call us toll-free: In the United States at 1-800-992-LBEL (5235), in Puerto Rico, 1-866-366-3235 (Metro area). US: Dis. by Ventura International Ltd.**

US: Dis. by Ventura International Ltd. DBA Belcorp USA, San Francisco, CA 94111 P.R.: Dist. by Ventura Corporation Ltd., San Juan, Puerto Rico 00926. MADE IN FRANCE

## EXPERT ROUTINE L'BEL

L'Bel presents Expert Routine, a skin care program with two steps that work together for enhanced results:

1. Cleanse the skin according to its needs
2. Nourish according to age

## PROGRESSION JOUR

Protective complex with SPF 15

The skin is an organ that acts as the body's first line of defense against environmental aggressions. However, after the age of 30, the skin's natural self-defense properties diminish, making it more vulnerable to ultraviolet (UVA and UVB) rays, as well as to pollution, which can accelerate the aging process.

The skin does not recover as quickly as it once did. For that reason, it is essential to give your skin the protection it needs.

Regression Jour with Sun Protection Factor (SPF) 15, in addition to moisturizing the skin, acts as a shield to protect its youthful appearance.

#### **Discover the effectiveness of its action**

- **Protective Shield Complex:** Effective plant-derived complex that helps maintain the skin's natural defenses.
- **Hydra-Film Technology:** Seaweed extract that helps recover the skin's hydrolipid layer - responsible for hydration, absorption and water retention - to transport moisture to the skin cells that need it most.

In two options according to your skin's needs:

- Regression Jour protective complex with SPF 15 facial day cream normal to dry skin.
- Regression Jour protective complex with SPF 15 facial day cream normal to combination skin.

**USES:** Helps prevent sunburn.

**WARNINGS: Skin Cancer / Skin Aging Alert: Spending time in the sun increases your risk of skin cancer and early skin aging. This product has been shown only to help prevent sunburn not skin cancer or early skin aging. For external use only. Do not use on damaged or broken skin. When using this product keep out of eyes. Rinse with water to remove. Stop use and ask a doctor if rash occurs. Keep out of reach of children.** If swallowed, get medical help or contact a Poison Control Center right away.

#### **DIRECTIONS:**

- Apply liberally and evenly 15 minutes before sun exposure.
- Apply after cleansing and toning on face and neck
- Reapply at least every 2 hours
- Use a water resistant sunscreen if swimming or sweating.
- Children under 6 months of age: Ask a doctor

#### **OTHER INFORMATION:**

- Protect the product in this container from excessive heat and direct sun.
- Apply in the morning at the end of your skin care routine
- Apply with fingertips, spreading softly throughout the face until completely absorbed
- HYPOALLERGENIC
- CLINICALLY AND DERMATOLOGICALLY TESTED

After the age of 30

NEW REGRESSION JOUR Protective complex with SPF 15 facial day lotion normal to combination skin 50 ml e (1.6 fl. oz.) L'BEL

**L'BEL REGRESSION JOUR Protective Complex With SPF 15 Facial Day Lotion Normal to Combination Skin**

L'BEL

REGRESSION  
JOUR

protective complex  
with SPF 15  
facial day lotion  
*normal to  
combination skin*

50 ml e (1.6 fl.oz.)

**USES:** Helps prevent sunburn.

**WARNINGS: Skin Cancer / Skin Aging**

**Alert:** Spending time in the sun increases your risk of skin cancer and early skin aging. This product has been shown only to help prevent sunburn, **not** skin cancer or early skin aging. **For external use only. Do not use** on damaged or broken skin. **When using this product** keep out of eyes. Rinse with water to remove. **Stop use and ask a doctor** if rash occurs. **Keep out of reach of children.** If swallowed, get medical help or contact a Poison Control Center right away.

**ACTIVE INGREDIENTS:**

Octinoxate (7.5 %),  
Octisalate (4 %),  
Oxybenzone (4 %).

**US:** Distributed by Ventura International Ltd, DBA Belcorp USA, San Francisco, CA 94111.

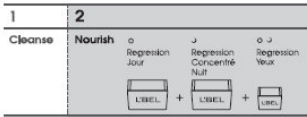
**PUERTO RICO:** Distributed by Ventura Corporation, Ltd, San Juan, Puerto Rico 00926.

**MADE IN FRANCE**

**EXPERT ROUTINE L'BEL**

L'Bel presents Expert Routine, a skin care program with two steps that work together for enhanced results:

- 1 Cleanse the skin according to its needs.
- 2 Nourish according to age.



**REGRESSION JOUR**  
Protective complex with SPF 15

The skin is an organ that acts as the body's first line of defense against environmental aggressions. However, after the age of 30, the skin's natural self-defense properties diminish, making it more vulnerable to ultraviolet (UVA and UVB) rays, as well as to pollution, which can accelerate the aging process.

The skin does not recover as quickly as it once did. For that reason, it is essential to give your skin the protection it needs.

Regression Jour with Sun Protection Factor (SPF) 15, in addition to moisturizing the skin, acts as a shield to protect its youthful appearance.

**Discover the effectiveness of its action**

- **Protective Shield Complex:** Effective plant-derived complex that helps maintain the skin's natural defenses.
- **Hydra-Film Technology:** Seaweed extract that helps recover the skin's hydrolipid layer—responsible for hydration, absorption and water retention—to transport moisture to the skin cells that need it most.

In two options according to your skin's needs:

- Regression Jour protective complex with SPF 15 facial day cream normal to dry skin
- Regression Jour protective complex with SPF 15 facial day lotion normal to combination skin

**USES:** Helps prevent sunburn.

**WARNINGS: Skin Cancer / Skin Aging Alert:** Spending time in the sun increases your risk of skin cancer and early skin aging. This product has been shown only to help prevent sunburn, not skin cancer or early skin aging. **For external use only. Do not use** on damaged or broken skin. **When using this product** keep out of eyes. Rinse with water to remove. **Stop use and ask a doctor if rash occurs. Keep out of reach of children. If swallowed, get medical help or contact a Poison Control Center right away.**

**DIRECTIONS:**

- Apply liberally and evenly 15 minutes before sun exposure.
- Apply after cleansing and toning on face and neck
- Reapply at least every 2 hours
- Use a water resistant sunscreen if swimming or sweating.
- Children under 6 months of age: Ask a doctor

**OTHER INFORMATION:**

- Protect the product in this container from excessive heat and direct sun.
- Apply in the morning at the end of your skin care routine
- Apply with the fingertips, spreading softly throughout the face until completely absorbed
- HYPOALLERGENIC
- CLINICALLY AND DERMATOLOGICALLY TESTED

**L'BEL**

**REGRESSION JOUR**  
protective complex with SPF 15

www.lbel.com



After the age of 30

**NEW REGRESSION JOUR**

Protective complex with SPF 15 facial day lotion normal to combination skin

**L'BEL**

REGRESSION JOUR  
protective complex with SPF 15 facial day lotion normal to combination skin  
50 ml e (1.6 fl.oz.)

**Drug Facts**

**Active Ingredients Purpose**

Ocinoxate (7.5 %), Octisalate (4 %), Oxybenzone (4 %) .... sunscreen

**Uses** ■ Helps prevent sunburn.

**Warnings** ■ **Skin Cancer / Skin Aging Alert:** Spending time in the sun increases your risk of skin cancer and early skin aging. This product has been shown only to help prevent sunburn, not skin cancer or early skin aging. ■ **For external use only. ■ Do not use** on damaged or broken skin. ■ **When using this product** keep out of eyes. Rinse with water to remove. ■ **Stop use and ask a doctor if rash occurs. ■ Keep out of reach of children. If swallowed, get medical help or contact a Poison Control Center right away.**

**Directions** ■ Apply liberally and evenly 15 minutes before sun exposure. ■ Apply after cleansing and toning on face and neck. ■ Reapply at least every 2 hours. ■ Use a water resistant sunscreen if swimming or sweating. ■ Children under 6 months of age: Ask a doctor

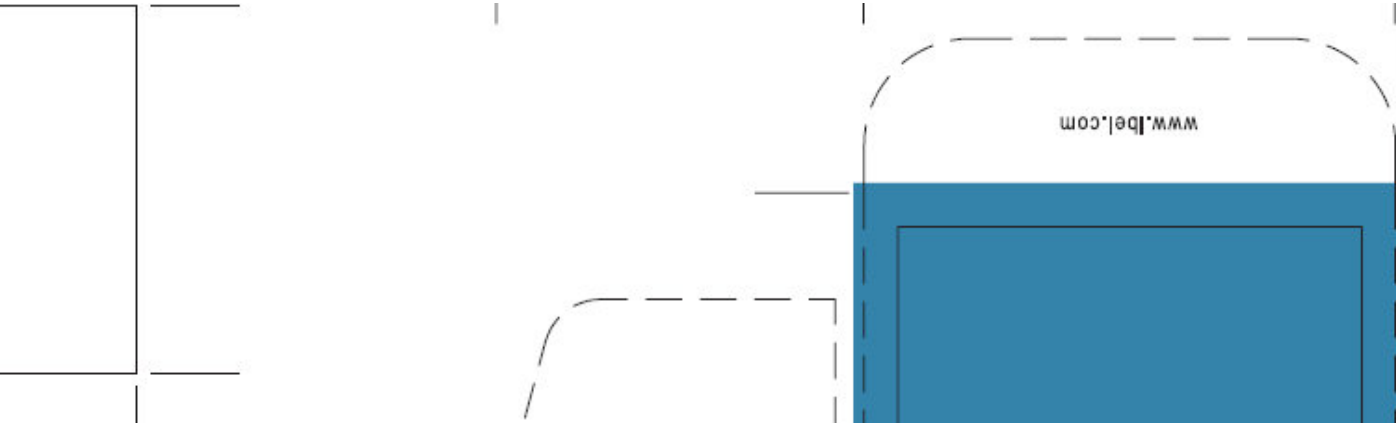
**Other information** ■ Protect the product in this container from excessive heat and direct sun. ■ Apply in the morning at the end of your skin care routine ■ Apply with the fingertips, spreading softly throughout the face until completely absorbed

**Drug Facts (continued)**

**Inactive ingredients**

Aqua (water), glycine soja protein glycine soja (soybean) protein), c12-15 alkyl benzoate, pium sativum extract (pium sativum (pea) extract), cyclohexasiloxane, dimethicone, mannitol, cetearyl alcohol, hdtrimethylol hexylactone crosspolymer, phenoxyethanol, sodium acrylate/acryloyldimethyltaurate/dimethylacrylamide crosspolymer, c20-22 alkyl phosphate, glyceryl stearate, hydroxyethyl acrylate/sodium acryloyldimethyl taurate copolymer, c20-22 alcohols, triethanolamine, isohexadecane, methylparaben, c14-22 alcohols, cetearyl glucoside, hydrolyzed adansonia digitata extract, butylparaben, cyclopentasiloxane, chlorphenesin, xanthan gum, propylparaben, acrylates/c10-30 alkyl acrylate crosspolymer, sodium edta, parfum (fragrance), sorbic acid, polysorbate 60, cyclohextrim, c12-20 alkyl glucoside, fex extract (yeast extract), polyolyzed algin, ethylparaben, chlorella vulgaris extract, maris aqua (sea water), isobutylparaben, silica, disodium succinate, CI 42090 (blue 1).

**Call us toll-free:** In the United States at 1-800-992-LBEL (5235), in Puerto Rico, 1-866-366-3235 (island) or 622-3235 (Metro area).  
US: Dist. by Ventura International Ltd, DBA Belcorp USA, San Francisco, CA 94111 **PR:** Dist. by Ventura Corporation, Ltd, San Juan, Puerto Rico 00926, MADE IN FRANCE



Regression Jour with Sun Protection Factor (SPF) 15, in addition to moisturizing the skin, acts as a shield to protect its youthful appearance. It works through two exclusive components: Protective Shield Complex and Hydra-Film Technology.

<b>Drug Facts</b>	
<b>Active Ingredients</b>	<b>Purpose</b>
Octinoxate (7.5%).....	sunscreen
Octisalate (4%).....	sunscreen
Oxybenzone (4%).....	sunscreen
<b>Uses</b>	
■ Helps prevent sunburn.	
<b>Warnings</b>	
■ <b>Skin Cancer / Skin Aging Alert:</b> Spending time in the sun increases your risk of skin cancer and early skin aging. This product has been shown only to help prevent sunburn, not skin cancer or early skin aging.	
■ <b>For external use only.</b>	
■ <b>Do not use</b> on damaged or broken skin.	
■ <b>When using this product</b> keep out of eyes. Rinse with water to remove.	
■ <b>Stop use and ask a doctor</b> if rash occurs.	
■ <b>Keep out of reach of children.</b> If swallowed, get medical help or contact a Poison Control Center right away.	
<b>Directions</b>	
■ Apply liberally and evenly 15 minutes before sun exposure.	
■ Apply after cleansing and toning on face and neck	
■ Reapply at least every 2 hours	
■ Use a water resistant sunscreen if swimming or sweating.	
■ Children under 6 months of age: Ask a doctor	
<b>Other information</b>	
■ Protect the product in this container from excessive heat and direct sun.	
■ Apply in the morning at the end of your skin care routine.	
■ Apply with the fingertips, spreading softly throughout the face until completely absorbed	
<b>Active ingredients</b>	
Aqua (water), glycine soja protein (glycine soja (soybean) protein), c12-15 alkyl benzoate, pisum sativum extract (pisum sativum (pea) extract), cyclohexasiloxane, dimethicone, mannitol, cetearyl alcohol, hdi/trimethylol hexyl lactone crosspolymer,	

<b>Drug Facts (continued)</b>
phenoxyethanol, sodium acrylate/acryloyldimethyl aurate/dimethylacrylamide crosspolymer, c20-22 alkyl phosphate, glyceryl stearate, hydroxyethyl acrylate/sodium acryloyldimethyl taurate copolymer, c20-22 alcohols, triethanolamine, isohexadecane, methylparaben, c14-22 alcohols, cetearyl glucoside, hydrolyzed adansonia digitata extract, butylparaben, cyclopentasiloxane, chlorphenesin, xanthan gum, propylparaben, acrylates/c10-30 alkyl acrylate crosspolymer, disodium edta, parfum (fragrance), sorbic acid, polysorbate 60, cyclodextrin, c12-20 alkyl glucoside, faex extract (yeast extract), hydrolyzed algin, ethylparaben, chlorella vulgaris extract, maris aqua (sea water), isobutylparaben, silica, disodium succinate, CI 42090 (blue 1).

US: Distributed by Ventura International Ltd, DBA Belcorp USA, San Francisco, CA 94111, P.R.: Distributed by Ventura Corporation, Ltd, San Juan, Puerto Rico 00926.  
MADE IN FRANCE

# L'BEL

## REGRESSION JOUR

protective complex with SPF 15 facial day lotion normal to combination skin

50 ml e (1.6 fl.oz.)

**LBEL REGRESSION JOUR PROTECTIVE COMPLEX WITH SPF 15 FACIAL DAY NORMAL TO COMBINATION SKIN**  
octinoxate, octisalate, oxybenzone lotion

**Product Information**

<b>Product Type</b>	HUMAN OTC DRUG	<b>Item Code (Source)</b>	NDC:43455-0003
<b>Route of Administration</b>	TOPICAL		

### Active Ingredient/Active Moiety

Ingredient Name	Basis of Strength	Strength
<b>OCTINOXATE</b> (UNII: 4Y5P7MUD51) (OCTINOXATE - UNII:4Y5P7MUD51)	OCTINOXATE	7.5 mL in 100 mL
<b>OCTISALATE</b> (UNII: 4X49Y0596W) (OCTISALATE - UNII:4X49Y0596W)	OCTISALATE	4 mL in 100 mL
<b>OXYBENZONE</b> (UNII: 95OOS7VE0Y) (OXYBENZONE - UNII:95OOS7VE0Y)	OXYBENZONE	4 mL in 100 mL

### Inactive Ingredients

Ingredient Name	Strength
<b>WATER</b> (UNII: 059QF0KO0R)	
<b>SOY PROTEIN</b> (UNII: R44IWB3RN5)	
<b>ALKYL (C12-15) BENZOATE</b> (UNII: A9EJ3J61HQ)	
<b>PEA</b> (UNII: W4X7H8GYFM)	
<b>CYCLOMETHICONE 6</b> (UNII: XHK3U310BA)	
<b>DIMETHICONE</b> (UNII: 92RU3N3Y1O)	
<b>MANNITOL</b> (UNII: 3OWL53L36A)	
<b>CETOSTEARYL ALCOHOL</b> (UNII: 2DMT128M1S)	
<b>PHENOXYETHANOL</b> (UNII: HIE492ZZ3T)	
<b>SODIUM ACRYLATE/SODIUM ACRYLOYLDIMETHYLTAURATE COPOLYMER (400000 MW)</b> (UNII: 1DXE3F3OZX)	
<b>C20-22 ALKYL PHOSPHATE</b> (UNII: L4VKP0Y7RP)	
<b>GLYCERYL MONOSTEARATE</b> (UNII: 230OU9XXE4)	
<b>2-HYDROXYETHYL ACRYLATE</b> (UNII: 25GT92NY0C)	
<b>C20-22 ALCOHOLS</b> (UNII: O4M0347C6A)	
<b>TROLAMINE</b> (UNII: 9O3K93S3TK)	
<b>ISOHEXADECANE</b> (UNII: 918X10UF1E)	
<b>METHYL PARABEN</b> (UNII: A218C7H9T)	
<b>C14-22 ALCOHOLS</b> (UNII: B1K89384RJ)	
<b>CETEARYL GLUCOSIDE</b> (UNII: 09FUA47KNA)	
<b>BUTYL PARABEN</b> (UNII: 3QPI1U3FV8)	
<b>CYCLOMETHICONE 5</b> (UNII: 0THT5PC10R)	
<b>CHLORPHENESIN</b> (UNII: I670DAL4SZ)	
<b>XANTHAN GUM</b> (UNII: TTV12P4NEE)	
<b>PROPYL PARABEN</b> (UNII: Z8IX2SC10H)	
<b>CARBOMER INTERPOLYMER TYPE A (55000 MPA.S)</b> (UNII: 59TL3WG5CO)	
<b>EDETATE DISODIUM</b> (UNII: 7FLD91C86K)	
<b>SORBIC ACID</b> (UNII: X045WJ989B)	
<b>POLYSORBATE 60</b> (UNII: CAL22UVI4M)	
<b>C12-20 ALKYL GLUCOSIDE</b> (UNII: K67N5Z1RUA)	
<b>YEAST</b> (UNII: 3NY3SM6B8U)	
<b>ETHYL PARABEN</b> (UNII: 14255EXE39)	
<b>CHLORELLA VULGARIS</b> (UNII: RYQ4R60M02)	
<b>ISOBUTYL PARABEN</b> (UNII: 0QQJ25X58G)	
<b>SILICON DIOXIDE</b> (UNII: ETJ7Z6XBU4)	
<b>SODIUM SUCCINATE ANHYDROUS</b> (UNII: V8ZGC8ISR3)	
<b>D&amp;C BLUE NO. 4</b> (UNII: 0KSY80VYS3)	

**Packaging**

#	Item Code	Package Description	Marketing Start Date	Marketing End Date
1	NDC:43455-0003-0	1 mL in 1 POUCH		
2	NDC:43455-0003-1	5 mL in 1 JAR		
3	NDC:43455-0003-2	50 mL in 1 JAR		

**Marketing Information**

Marketing Category	Application Number or Monograph Citation	Marketing Start Date	Marketing End Date
OTC monograph final	part352	03/28/2012	

**Labeler** - Ventura International, LTD (603192787)

**Establishment**

Name	Address	ID/FEI	Business Operations
MF Productions		266769145	manufacture

Revised: 3/2012

Ventura International, LTD