

B05 GLUCO BALANCE- adrenalinum, argentum nitricum, bos taurus pituitarum posterium, glycerinum, glycyrrhiza glabra, kali carbonicum, lacticum acidum, magnesia sulphurica, niccolum metallicum, pancreatinum, phosphoricum acidum, saccharinum, saccharum lactis, saccharum officinale, sarcolacticum acidum, selenium metallicum, syzygium jambolanum, thyroidinum, zincum metallicum solution/ drops

Apex Energetics Inc.

Disclaimer: This homeopathic product has not been evaluated by the Food and Drug Administration for safety or efficacy. FDA is not aware of scientific evidence to support homeopathy as effective.

B05

Active Ingredients	
Adrenalinum	6X 8X 12X
Argentum Nitricum	9X 12X 15X
Bos Taurus Pituitarum Posterium	30X
Glycerinum	6X 8X 12X
Glycyrrhiza Glabra	1X
Kali Carbonicum	9X 12X 15X
Lacticum Acidum	3X 6X 9X 12X 15X
Magnesia Sulphurica	8X 12X
Niccolum Metallicum	10X 12X
Pancreatinum	6X 8X 12X 15X 20X 30X
Phosphoricum Acidum	4X 6X 8X
Saccharinum	6X 8X 10X 12X 15X
Saccharum Lactis	6X 9X 12X 15X
Saccharum Officinale	12X 15X 30X
Sarcolacticum Acidum	5X 7X 9X 12X 15X
Selenium Metallicum	12X 30X
Syzygium Jambolanum	3X
Thyroidinum	6X

Uses:

For temporary relief of minor:

sweet cravings*

cramps*

tiredness*

sadness*

headache*

frequent urination*

excessive thirst*

*Claims based on traditional homeopathic practice, not accepted medical evidence. Not FDA evaluated.

If pregnant or breastfeeding, ask a health professional before use.

Do not use if clear seal over the cap is broken or missing.

Keep out of reach of children. In case of overdose, get medical help or contact a Poison Control Center right away.

Stop use and ask a doctor if sweet cravings, cramps, tiredness, sadness, headache, frequent urination, excessive thirst, or other symptoms do not improve within 7 days or are accompanied by fever.

Directions:

Adults & children ages 12 years and over: Take 12-15 drops under the tongue 3-4 times a day, or as directed by your healthcare professional. Consult a physician for use in children under 12 years of age.

Inactive Ingredients

alcohol (20% by volume), distilled water

Distributed by Apex Energetics. Questions?

16592 Hale Ave., Irvine, CA 92606, USA

UREPLEX® B05

ANTITOX®

GLUCO BALANCE™

Homeopathic Formula

Sweet Cravings*

Cramps*

Tiredness*

1 fl oz (30 mL)

Alcohol 20% by Volume

LOT **Drug Facts (continued)**

Warnings: If pregnant or breastfeeding, ask a health professional before use. Do not use if clear seal over the cap is broken or missing. **Keep out of reach of children.** In case of overdose, get medical help or contact a Poison Control Center right away. **Stop use and ask a doctor if** sweet cravings, cramps, tiredness, sadness, headache, frequent urination, excessive thirst, or other symptoms do not improve within 7 days or are accompanied by fever.

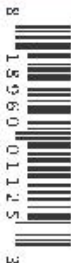
Directions: Adults & children ages 12 years and over: Take 12-15 drops under the tongue 3-4 times a day, or as directed by your healthcare professional. Consult a physician for use in children under 12 years of age.

Inactive Ingredients alcohol (20% by volume), distilled water

*Claims based on traditional homeopathic practice, not accepted medical evidence. Not FDA evaluated.

Distributed by Apex Energetics. Questions? 16592 Hale Ave., Irvine, CA 92606, USA

© 2021 Apex Energetics



**FUTUREPLEX B05
ANTITOX***



**GLUCO
BALANCE™**
Homeopathic Formula

Sweet Cravings*
Cramps* • Tiredness*

1 fl oz (30 mL)

Alcohol 20% by Volume

Drug Facts

B0521-0216

Active Ingredients

Adrenalinum	6X 8X 12X
Argentum Nitricum	9X 12X 15X
Bos Taurus Pituitarum Posterium	30X
Glycerinum	6X 8X 12X
Glycyrrhiza Glabra	1X
Kali Carbonicum	9X 12X 15X
Lacticum Acidum	3X 6X 9X 12X 15X
Magnesia Sulphurica	8X 12X
Niccolum Metallicum	10X 12X
Pancreatinum	6X 8X 12X 15X 20X 30X
Phosphoricum Acidum	4X 6X 8X
Saccharinum	6X 8X 10X 12X 15X
Saccharum Lactis	6X 9X 12X 15X
Saccharum Officinale	12X 15X 30X
Sarcosolacticum Acidum	5X 7X 9X 12X 15X
Selenium Metallicum	12X 30X
Syzygium Jambolanum	3X
Thyroidinum	6X
Zincum Metallicum	10X 12X 15X

Uses: For temporary relief of minor: • sweet cravings* • cramps* • tiredness* • sadness* • headache* • frequent urination* • excessive thirst* ●

B05 GLUCO BALANCE

adrenalinum, argentum nitricum, bos taurus pituitarum posterium, glycerinum, glycyrrhiza glabra, kali carbonicum, lacticum acidum, magnesia sulphurica, niccolum metallicum, pancreatinum, phosphoricum acidum, saccharinum, saccharum lactis, saccharum officinale, sarcosolacticum acidum, selenium metallicum, syzygium jambolanum, thyroidinum, zincum metallicum solution/ drops

Product Information

Product Type	HUMAN OTC DRUG	Item Code (Source)	NDC:63479-0205
Route of Administration	SUBLINGUAL		

Active Ingredient/Active Moiety

Ingredient Name	Basis of Strength	Strength
POTASSIUM CARBONATE (UNII: BQN1B9B9HA) (CARBONATE ION - UNII:7UJQ5OPE7D)	POTASSIUM CARBONATE	15 [hp_X] in 1 mL
NICKEL (UNII: 7OV03QG267) (NICKEL - UNII:7OV03QG267)	NICKEL	12 [hp_X] in 1 mL
PHOSPHORIC ACID (UNII: E4GA8884NN) (PHOSPHORIC ACID - UNII:E4GA8884NN)	PHOSPHORIC ACID	8 [hp_X] in 1 mL
LACTIC ACID, L- (UNII: F9S9FFU82N) (LACTIC ACID, L- - UNII:F9S9FFU82N)	LACTIC ACID, L-	15 [hp_X] in 1 mL
SILVER NITRATE (UNII: 95IT3W8JZE) (SILVER CATION - UNII:57N7B0K90A)	SILVER NITRATE	15 [hp_X] in 1 mL
GLYCERIN (UNII: PDC6A3C0OX) (GLYCERIN - UNII:PDC6A3C0OX)	GLYCERIN	12 [hp_X] in 1 mL
GLYCYRRHIZA GLABRA (UNII: 2788Z9758H) (GLYCYRRHIZA GLABRA - UNII:2788Z9758H)	GLYCYRRHIZA GLABRA	1 [hp_X] in 1 mL
LACTOSE, UNSPECIFIED FORM (UNII: J2B2A4N98G) (ANHYDROUS LACTOSE - UNII:3SY5LH9PMK)	LACTOSE, UNSPECIFIED FORM	15 [hp_X] in 1 mL
SUCROSE (UNII: C151H8M554) (SUCROSE - UNII:C151H8M554)	SUCROSE	30 [hp_X] in 1 mL
SELENIUM (UNII: H6241UJ22B) (SELENIUM - UNII:H6241UJ22B)	SELENIUM	30 [hp_X] in 1 mL
MAGNESIUM SULFATE HEPTAHYDRATE (UNII: SK47B8698T) (MAGNESIUM CATION - UNII:T6V3LHY838)	MAGNESIUM SULFATE HEPTAHYDRATE	12 [hp_X] in 1 mL

PANCRELIPASE (UNII: FQ3DRG0N5K) (PANCRELIPASE LIPASE - UNII:8MYC33932O)	PANCRELIPASE LIPASE	30 [hp_X] in 1 mL
SYZYGIUM CUMINI SEED (UNII: 820LSF646I) (SYZYGIUM CUMINI SEED - UNII:820LSF646I)	SYZYGIUM CUMINI SEED	3 [hp_X] in 1 mL
ZINC (UNII: J41CSQ7QDS) (ZINC - UNII:J41CSQ7QDS)	ZINC	15 [hp_X] in 1 mL
LACTIC ACID, DL- (UNII: 3B8D35Y7S4) (LACTIC ACID, DL- - UNII:3B8D35Y7S4)	LACTIC ACID, DL-	15 [hp_X] in 1 mL
SACCHARIN (UNII: FST467XS7D) (SACCHARIN - UNII:FST467XS7D)	SACCHARIN	15 [hp_X] in 1 mL
THYROID, UNSPECIFIED (UNII: 0B4FDL9I6P) (THYROID, UNSPECIFIED - UNII:0B4FDL9I6P)	THYROID, UNSPECIFIED	6 [hp_X] in 1 mL
EPINEPHRINE (UNII: YKH834O4BH) (EPINEPHRINE - UNII:YKH834O4BH)	EPINEPHRINE	12 [hp_X] in 1 mL
BOS TAURUS PITUITARY GLAND, POSTERIOR (UNII: 7JM57I419K) (BOS TAURUS PITUITARY GLAND, POSTERIOR - UNII:7JM57I419K)	BOS TAURUS PITUITARY GLAND, POSTERIOR	30 [hp_X] in 1 mL

Inactive Ingredients

Ingredient Name	Strength
ALCOHOL (UNII: 3K9958V90M)	
WATER (UNII: 059QF0KO0R)	

Packaging

#	Item Code	Package Description	Marketing Start Date	Marketing End Date
1	NDC:63479-0205-1	30 mL in 1 BOTTLE, GLASS; Type 0: Not a Combination Product	12/15/1994	

Marketing Information

Marketing Category	Application Number or Monograph Citation	Marketing Start Date	Marketing End Date
unapproved homeopathic		12/15/1994	

Labeler - Apex Energetics Inc. (195816384)

Revised: 1/2024

Apex Energetics Inc.