

B02 ADRENAL PEP- aceticum acidum, adrenalinum, american ginseng, arnica montana, balsamum peruvianum, bos taurus pituitarum posterium, cherry plum flower, chininum arsenicosum, cinchona officinalis, clematis vitalba flower, damiana, european hornbeam flower, european olive flower, glycyrrhiza glabra, impatiens glandulifera flower, kali phosphoricum, lycopodium clavatum, magnesia phosphorica, phosphoricum acidum, phosphorus, pyrenees star of bethlehem, rockrose flower, selenium metallicum, thyroidinum solution/ drops
Apex Energetics Inc.

Disclaimer: This homeopathic product has not been evaluated by the Food and Drug Administration for safety or efficacy. FDA is not aware of scientific evidence to support homeopathy as effective.

B02

Active Ingredients	
ACETICUM ACIDUM	8X 12X 15X 30X
ADRENALINUM	6X
AMERICAN GINSENG	2X
ARNICA MONTANA	6X 9X 12X
BALSAMUM PERUVIANUM	6X 9X
BOS TAURUS PITUITARUM POSTERIUM	15X
CHERRY PLUM FLOWER	4C 8C
CHININUM ARSENICOSUM	4X 6X 8X 12X
CINCHONA OFFICINALIS	4X 6X 8X 12X
CLEMATIS VITALBA FLOWER	4C 8C
DAMIANA	1X
EUROPEAN HORNBEAM FLOWER	4C 8C
EUROPEAN OLIVE FLOWER	4C 8C
GLYCYRRHIZA GLABRA	1X
IMPATIENS GLANDULIFERA FLOWER	4C 8C
KALI PHOSPHORICUM	6X 8X 10X 12X
LYCOPODIUM CLAVATUM	6X 9X 12X
MAGNESIA PHOSPHORICA	10X 12X
PHOSPHORICUM ACIDUM	6X 9X 12X 30X
PHOSPHORUS	8X 12X 30X
PYRENEES STAR OF BETHLEHEM FLOWERING TOP	4C 8C
ROCKROSE FLOWER	4C 8C
SELENIUM METALLICUM	10X 12X 15X
THYROIDINUM	6X

Uses:

For temporary relief of minor:

tiredness*

sadness*

restlessness*

exhaustion*

sleepiness*

*Claims based on traditional homeopathic practice, not accepted medical evidence. Not FDA evaluated.

Warnings:

If pregnant or breastfeeding, ask a health professional before use.

Do not use if clear seal over the cap is broken or missing.

Keep out of reach of children. In case of overdose, get medical help or contact a Poison Control Center right away.

Stop use and ask a doctor if tiredness, sadness, restlessness, exhaustion, sleepiness, or other symptoms do not improve within 7 days or are accompanied by fever.

Adults & children ages 12 years and over: Take 10-15 drops under the tongue 3-4 times a day, or as directed by your healthcare professional. Consult a physician for use in children under 12 years of age.

alcohol (20% by volume), distilled water

Distributed by Apex Energetics. Questions?

16592 Hale Ave., Irvine, CA 92606, USA

FUTUREPLEX® B02

ANTITOX®

ADRENAL PEP™

Homeopathic Formula

Tiredness*

Sadness*

Restlessness*

1 fl oz (30 mL)

Alcohol 20% by Volume

U11 **Drug Facts (continued)**

Uses: For temporary relief of minor: • tiredness* • sadness* • restlessness* • exhaustion* • sleepiness*

Warnings: If pregnant or breastfeeding, ask a health professional before use. Do not use if clear seal over the cap is broken or missing. **Keep out of reach of children.** In case of overdose, get medical help or contact a Poison Control Center right away. **Stop use and ask a doctor** if tiredness, sadness, restlessness, exhaustion, sleepiness, or other symptoms do not improve within 7 days or are accompanied by fever.

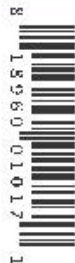
Directions: Adults & children ages 12 years and over: Take 10-15 drops under the tongue 3-4 times a day, or as directed by your healthcare professional. Consult a physician for use in children under 12 years of age.

Inactive Ingredients alcohol (20% by volume), distilled water

*Claims based on traditional homeopathic practice, not accepted medical evidence. Not FDA evaluated.

Distributed by Apex Energetics. Questions? 16592 Hale Ave., Irvine, CA 92606, USA

© 2021 Apex Energetics



FUTUREPLEX B02 ANTITOX™



ADRENAL PEP™

Homeopathic Formula

Tiredness* • Sadness*
Restlessness*

1 fl oz (30 mL)

Alcohol 20% by Volume

Drug Facts

B0221-0216

Active Ingredients

Aceticum Acidum	8X 12X 15X 30X	Glycyrrhiza Glabra	1X
Adrenalinum	6X	Impatiens Glandulifera	4C 8C
American Ginseng	2X	Flower	4C 8C
Arnica Montana	6X 9X 12X	Kali Phosphoricum	6X 8X 10X 12X
Balsamum Peruvianum	6X 9X	Lycopodium Clavatum	6X 9X 12X
Bos Taurus Pituitarum	15X	Magnesia Phosphorica	10X 12X
Cherry Plum Flower	4C 8C	Phosphoricum Acidum	6X 9X 12X 30X
Chininum Arsenicosum	4X 6X 8X 12X	Phosphorus	8X 12X 30X
Cinchona Officinalis	4X 6X 8X 12X	Pyrenees Star of Bethlehem	4C 8C
Clematis Vitalba Flower	4C 8C	Flowering Top	4C 8C
Damiana	1X	Rockrose Flower	4C 8C
European Hornbeam Flower	4C 8C	Selenium Metallicum	10X 12X 15X
European Olive Flower	4C 8C	Thyroidinum	6X

B02 ADRENAL PEP

aceticum acidum, adrenalinum, american ginseng, amica montana, balsamum peruvianum, bos taurus pituitarum, chery plum flower, chininum arsenicosum, cinchona officinalis, clematis vitalba flower, damiana, european hornbeam flower, european olive flower, glycyrrhiza glabra, impatiens glandulifera flower, kali phosphoricum, lycopodium clavatum, magnesia phosphorica, phosphoricum acidum, phosphorus, pyrenees star of bethlehem, rockrose flower, selenium metallicum, thyroidinum solution/ drops

Product Information

Product Type	HUMAN OTC DRUG	Item Code (Source)	NDC:63479-0202
Route of Administration	SUBLINGUAL		

Active Ingredient/Active Moiety

Ingredient Name	Basis of Strength	Strength
EPINEPHRINE (UNII: YKH834O4BH) (EPINEPHRINE - UNII:YKH834O4BH)	EPINEPHRINE	6 [hp_X] in 1 mL
DIBASIC POTASSIUM PHOSPHATE (UNII: CI71S98N1Z) (PHOSPHATE ION - UNII:NK08V8K8HR)	DIBASIC POTASSIUM PHOSPHATE	12 [hp_X] in 1 mL
LYCOPODIUM CLAVATUM SPORE (UNII: C88X29Y479) (LYCOPODIUM CLAVATUM SPORE - UNII:C88X29Y479)	LYCOPODIUM CLAVATUM SPORE	12 [hp_X] in 1 mL
PHOSPHORIC ACID (UNII: E4GA8884NN) (PHOSPHORIC ACID - UNII:E4GA8884NN)	PHOSPHORIC ACID	30 [hp_X] in 1 mL
TURNERA DIFFUSA LEAFY TWIG (UNII: RQ2CFA7WMJ) (TURNERA DIFFUSA LEAFY TWG - UNII:RQ2CFA7WMJ)	TURNERA DIFFUSA LEAFY TWG	1 [hp_X] in 1 mL
BALSAM PERU (UNII: 8P5F881OCY) (BALSAM PERU - UNII:8P5F881OCY)	BALSAM PERU	9 [hp_X] in 1 mL
QUININE ARSENITE (UNII: 42QO5P0NLM) (QUININE - UNII:A7V27PHC7A)	QUININE ARSENITE	12 [hp_X] in 1 mL
CLEMATIS VITALBA FLOWER (UNII: 7SCP4N87CI) (CLEMATIS VITALBA FLOWER - UNII:7SCP4N87CI)	CLEMATIS VITALBA FLOWER	8 [hp_C] in 1 mL
CARPINUS BETULUS FLOWER (UNII: 07YL55QKZ9) (CARPINUS BETULUS FLOWER - UNII:07YL55QKZ9)	CARPINUS BETULUS FLOWER	8 [hp_C] in 1 mL
GLYCYRRHIZA GLABRA (UNII: 2788Z9758H) (GLYCYRRHIZA GLABRA - UNII:2788Z9758H)	GLYCYRRHIZA GLABRA	1 [hp_X]

UNII:2788Z9758H)	GLANDULIFERA GLABRA	in 1 mL
IMPATIENS GLANDULIFERA FLOWER (UNII: AJU5O1A5ZV) (IMPATIENS GLANDULIFERA FLOWER - UNII:AJU5O1A5ZV)	IMPATIENS GLANDULIFERA FLOWER	8 [hp_C] in 1 mL
HELIANTHEMUM NUMMULARIUM FLOWER (UNII: 51BRR32WPP) (HELIANTHEMUM NUMMULARIUM FLOWER - UNII:51BRR32WPP)	HELIANTHEMUM NUMMULARIUM FLOWER	8 [hp_C] in 1 mL
SELENIUM (UNII: H6241UJ22B) (SELENIUM - UNII:H6241UJ22B)	SELENIUM	15 [hp_X] in 1 mL
MAGNESIUM PHOSPHATE, DIBASIC TRIHYDRATE (UNII: HF539G9L3Q) (MAGNESIUM CATION - UNII:T6V3LHY838)	MAGNESIUM PHOSPHATE, DIBASIC TRIHYDRATE	12 [hp_X] in 1 mL
ORNITHOGALUM UMBELLATUM FLOWERING TOP (UNII: CZD6M4PY4B) (ORNITHOGALUM UMBELLATUM FLOWERING TOP - UNII:CZD6M4PY4B)	ORNITHOGALUM UMBELLATUM FLOWERING TOP	8 [hp_C] in 1 mL
THYROID, UNSPECIFIED (UNII: 0B4FDL9I6P) (THYROID, UNSPECIFIED - UNII:0B4FDL9I6P)	THYROID, UNSPECIFIED	6 [hp_X] in 1 mL
PHOSPHORUS (UNII: 27YLU75U4W) (PHOSPHORUS - UNII:27YLU75U4W)	PHOSPHORUS	30 [hp_X] in 1 mL
BOS TAURUS PITUITARY GLAND, POSTERIOR (UNII: 7JM57I419K) (BOS TAURUS PITUITARY GLAND, POSTERIOR - UNII:7JM57I419K)	BOS TAURUS PITUITARY GLAND, POSTERIOR	15 [hp_X] in 1 mL
OLEA EUROPAEA FLOWER (UNII: 498M34P1VZ) (OLEA EUROPAEA FLOWER - UNII:498M34P1VZ)	OLEA EUROPAEA FLOWER	8 [hp_C] in 1 mL
PRUNUS CERASIFERA FLOWER (UNII: 0KD7R09EAS) (PRUNUS CERASIFERA FLOWER - UNII:0KD7R09EAS)	PRUNUS CERASIFERA FLOWER	8 [hp_C] in 1 mL
CINCHONA OFFICINALIS BARK (UNII: S003A158SB) (CINCHONA OFFICINALIS BARK - UNII:S003A158SB)	CINCHONA OFFICINALIS BARK	12 [hp_X] in 1 mL
ACETIC ACID (UNII: Q40Q9N063P) (ACETIC ACID - UNII:Q40Q9N063P)	ACETIC ACID	30 [hp_X] in 1 mL
AMERICAN GINSENG (UNII: 8W75VCV53Q) (AMERICAN GINSENG - UNII:8W75VCV53Q)	AMERICAN GINSENG	2 [hp_X] in 1 mL
ARNICA MONTANA (UNII: O80TY208ZW) (ARNICA MONTANA - UNII:O80TY208ZW)	ARNICA MONTANA	12 [hp_X] in 1 mL

Inactive Ingredients

Ingredient Name	Strength
WATER (UNII: 059QF0KO0R)	
ALCOHOL (UNII: 3K9958V90M)	

Packaging

#	Item Code	Package Description	Marketing Start Date	Marketing End Date
1	NDC:63479-0202-1	30 mL in 1 BOTTLE, GLASS; Type 0: Not a Combination Product	12/15/1994	

Marketing Information

Marketing Category	Application Number or Monograph Citation	Marketing Start Date	Marketing End Date
unapproved homeopathic		12/15/1994	

Labeler - Apex Energetics Inc. (195816384)

