

**SIMVASTATIN- simvastatin tablet, film coated**  
**NuCare Pharmaceuticals, Inc.**

-----

**HIGHLIGHTS OF PRESCRIBING INFORMATION**

**These highlights do not include all the information needed to use SIMVASTATIN TABLETS safely and effectively. See full prescribing information for SIMVASTATIN TABLETS.**

**SIMVASTATIN tablets, for oral use**

**Initial U.S. Approval: 1991**

----- **RECENT MAJOR CHANGES** -----

**Warnings and Precautions**

Myopathy/Rhabdomyolysis ( 5.1)	10/2019
Immune-Mediated Necrotizing Myopathy ( 5.2)	9/2020

----- **INDICATIONS AND USAGE** -----

Simvastatin tablets are an HMG-CoA reductase inhibitor (statin) indicated as an adjunctive therapy to diet to:

- Reduce the risk of total mortality by reducing CHD deaths and reduce the risk of non-fatal myocardial infarction, stroke, and the need for revascularization procedures in patients at high risk of coronary events. (1.1)
- Reduce elevated total-C, LDL-C, Apo B, TG and increase HDL-C in patients with primary hyperlipidemia (heterozygous familial and nonfamilial) and mixed dyslipidemia. (1.2)
- Reduce elevated TG in patients with hypertriglyceridemia and reduce TG and VLDL-C in patients with primary dysbeta-lipoproteinemia. (1.2)
- Reduce total-C and LDL-C in adult patients with homozygous familial hypercholesterolemia. (1.2)
- Reduce elevated total-C, LDL-C, and Apo B in boys and postmenarchal girls, 10 to 17 years of age with heterozygous familial hypercholesterolemia after failing an adequate trial of diet therapy. (1.2, 1.3)

**Limitations of Use**

Simvastatin tablets have not been studied in Fredrickson Types I and V dyslipidemias. (1.4)

----- **DOSAGE AND ADMINISTRATION** -----

- Dose range is 5 to 40 mg/day. (2.1)
- Recommended usual starting dose is 10 or 20 mg once a day in the evening. (2.1)
- Recommended starting dose for patients at high risk of CHD is 40 mg/day. (2.1)
- Due to the increased risk of myopathy, including rhabdomyolysis, use of the 80 mg dose of simvastatin tablets should be restricted to patients who have been taking simvastatin 80 mg chronically (e.g., for 12 months or more) without evidence of muscle toxicity. (2.2)
- Patients who are currently tolerating the 80 mg dose of simvastatin tablets who need to be initiated on an interacting drug that is contraindicated or is associated with a dose cap for simvastatin should be switched to an alternative statin with less potential for the drug-drug interaction. (2.2)
- Due to the increased risk of myopathy, including rhabdomyolysis, associated with the 80 mg dose of simvastatin tablets, patients unable to achieve their LDL-C goal utilizing the 40 mg dose of simvastatin tablets should not be titrated to the 80 mg dose, but should be placed on alternative LDL-C-lowering treatment(s) that provides greater LDL-C lowering. (2.2)
- Adolescents (10 to 17 years of age) with HeFH: starting dose is 10 mg/day; maximum recommended dose is 40 mg/day. (2.5)

----- **DOSAGE FORMS AND STRENGTHS** -----

Tablets: 5 mg; 10 mg; 20 mg; 40 mg; 80 mg (3)

----- **CONTRAINDICATIONS** -----

- Concomitant administration of strong CYP3A4 inhibitors. (4, 5.1)
- Concomitant administration of gemfibrozil, cyclosporine, or danazol. (4, 5.1)
- Hypersensitivity to any component of this medication. (4, 6.2)
- Active liver disease, which may include unexplained persistent elevations in hepatic transaminase levels. (4, 5.3)
- Women who are pregnant or may become pregnant. (4, 8.1)

- Nursing mothers. (4, 8.3)

## WARNINGS AND PRECAUTIONS

- **Patients should be advised of the increased risk of myopathy including rhabdomyolysis with the 80 mg dose. (5.1)**
- Skeletal muscle effects (e.g., myopathy and rhabdomyolysis): Risks increase with higher doses and concomitant use of certain medicines. Predisposing factors include advanced age ( $\geq 65$ ), female gender, uncontrolled hypothyroidism, and renal impairment. Rare cases of rhabdomyolysis with acute renal failure secondary to myoglobinuria have been reported. (4, 5.1, 8.5, 8.6)
- Patients should be advised to report promptly any unexplained and/or persistent muscle pain, tenderness, or weakness. Simvastatin therapy should be discontinued immediately if myopathy is diagnosed or suspected. See Drug Interaction table. (5.1)
- Immune-Mediated Necrotizing Myopathy (IMNM): There have been rare reports of IMNM, an autoimmune myopathy, associated with statin use. IMNM is characterized by: proximal muscle weakness and elevated serum creatine kinase, which persist despite discontinuation of statin treatment; positive anti-HMG CoA reductase antibody; muscle biopsy showing necrotizing myopathy; and improvement with immunosuppressive agents. (5.2)
- Liver enzyme abnormalities: Persistent elevations in hepatic transaminases can occur. Check liver enzyme tests before initiating therapy and as clinically indicated thereafter. (5.3)

## ADVERSE REACTIONS

Most common adverse reactions (incidence  $\geq 5\%$ ) are: upper respiratory infection, headache, abdominal pain, constipation, and nausea. (6.1)

**To report SUSPECTED ADVERSE REACTIONS, contact Northstar Rx LLC at 1-800-206-7821 or FDA at 1-800-FDA-1088 or [www.fda.gov/medwatch](http://www.fda.gov/medwatch).**

## DRUG INTERACTIONS

**Drug Interactions Associated with Increased Risk of Myopathy/Rhabdomyolysis (2.3, 2.4, 4, 5.1, 7.1, 7.2, 7.3, 12.3)**

Interacting Agents	Prescribing Recommendations
Strong CYP3A4 inhibitors (e.g., itraconazole, ketoconazole, posaconazole, voriconazole, erythromycin, clarithromycin, telithromycin, HIV protease inhibitors, boceprevir, telaprevir, nefazodone, cobicistat-containing products), gemfibrozil, cyclosporine, danazol	Contraindicated with simvastatin
Niacin ( $\geq 1$ g/day)	For Chinese patients, not recommended with simvastatin
Verapamil, diltiazem, dronedarone	Do not exceed 10 mg simvastatin daily
Amiodarone, amlodipine, ranolazine	Do not exceed 20 mg simvastatin daily
Lomitapide	For patients with HoFH, do not exceed 20 mg simvastatin daily*
Daptomycin	Temporarily suspend simvastatin
Grapefruit juice	Avoid grapefruit juice

\* For patients with HoFH who have been taking 80 mg simvastatin chronically (e.g., for 12 months or more) without evidence of muscle toxicity, do not exceed 40 mg simvastatin when taking lomitapide.

- Other Lipid-lowering Medications: Use with other fibrate products increases the risk of adverse skeletal muscle effects. Caution should be used when prescribing with simvastatin. (5.1, 7.2)
- Coumarin anticoagulants: Concomitant use with simvastatin prolongs INR. Achieve stable INR prior to starting simvastatin. Monitor INR frequently until stable upon initiation or alteration of simvastatin therapy. (7.6)

## USE IN SPECIFIC POPULATIONS

- Severe renal impairment: patients should be started at 5 mg/day and be closely monitored. (2.6, 8.6)
- Chinese patients: May be at higher risk of myopathy; monitor appropriately. (5.1, 8.8)

**Revised: 10/2020**

## FULL PRESCRIBING INFORMATION: CONTENTS\*

### 1 INDICATIONS AND USAGE

- 1.1 Reductions in Risk of CHD Mortality and Cardiovascular Events
- 1.2 Hyperlipidemia
- 1.3 Adolescent Patients with Heterozygous Familial Hypercholesterolemia (HeFH)
- 1.4 Limitations of Use

## **2 DOSAGE AND ADMINISTRATION**

- 2.1 Recommended Dosing
- 2.2 Restricted Dosing for 80 mg
- 2.3 Coadministration with Other Drugs
- 2.4 Patients with Homozygous Familial Hypercholesterolemia
- 2.5 Adolescents (10 to 17 years of age) with Heterozygous Familial Hypercholesterolemia
- 2.6 Patients with Renal Impairment

## **3 DOSAGE FORMS AND STRENGTHS**

## **4 CONTRAINDICATIONS**

## **5 WARNINGS AND PRECAUTIONS**

- 5.1 Myopathy/Rhabdomyolysis
- 5.2 Immune-Mediated Necrotizing Myopathy
- 5.3 Liver Dysfunction
- 5.4 Endocrine Function

## **6 ADVERSE REACTIONS**

- 6.1 Clinical Trials Experience
- 6.2 Postmarketing Experience

## **7 DRUG INTERACTIONS**

- 7.1 Strong CYP3A4 Inhibitors, Cyclosporine, or Danazol
- 7.2 Lipid-Lowering Drugs That Can Cause Myopathy When Given Alone
- 7.3 Amiodarone, Dronedarone, Ranolazine, or Calcium Channel Blockers
- 7.4 Niacin
- 7.5 Digoxin
- 7.6 Coumarin Anticoagulants
- 7.7 Colchicine
- 7.8 Daptomycin

## **8 USE IN SPECIFIC POPULATIONS**

- 8.1 Pregnancy
- 8.3 Nursing Mothers
- 8.4 Pediatric Use
- 8.5 Geriatric Use
- 8.6 Renal Impairment
- 8.7 Hepatic Impairment
- 8.8 Chinese Patients

## **10 OVERDOSAGE**

## **11 DESCRIPTION**

## **12 CLINICAL PHARMACOLOGY**

- 12.1 Mechanism of Action
- 12.2 Pharmacodynamics
- 12.3 Pharmacokinetics

## **13 NONCLINICAL TOXICOLOGY**

- 13.1 Carcinogenesis, Mutagenesis, Impairment of Fertility
- 13.2 Animal Toxicology and/or Pharmacology

## **14 CLINICAL STUDIES**

- 14.1 Clinical Studies in Adults
- 14.2 Clinical Studies in Adolescents

## **16 HOW SUPPLIED/STORAGE AND HANDLING**

\* Sections or subsections omitted from the full prescribing information are not listed.

---

## **FULL PRESCRIBING INFORMATION**

### **1 INDICATIONS AND USAGE**

Therapy with lipid-altering agents should be only one component of multiple risk factor intervention in individuals at significantly increased risk for atherosclerotic vascular disease due to hypercholesterolemia. Drug therapy is indicated as an adjunct to diet when the response to a diet restricted in saturated fat and cholesterol and other nonpharmacologic measures alone has been inadequate. In patients with coronary heart disease (CHD) or at high risk of CHD, simvastatin tablets can be started simultaneously with diet.

#### **1.1 Reductions in Risk of CHD Mortality and Cardiovascular Events**

In patients at high risk of coronary events because of existing coronary heart disease, diabetes, peripheral vessel disease, history of stroke or other cerebrovascular disease, simvastatin tablets are indicated to:

- Reduce the risk of total mortality by reducing CHD deaths.
- Reduce the risk of non-fatal myocardial infarction and stroke.
- Reduce the need for coronary and non-coronary revascularization procedures.

#### **1.2 Hyperlipidemia**

Simvastatin tablets are indicated to:

- Reduce elevated total cholesterol (total-C), low-density lipoprotein cholesterol (LDL-C), apolipoprotein B (Apo B), and triglycerides (TG), and to increase high-density lipoprotein cholesterol (HDL-C) in patients with primary hyperlipidemia (Fredrickson type IIa, heterozygous familial and nonfamilial) or mixed dyslipidemia (Fredrickson type IIb).
- Reduce elevated TG in patients with hypertriglyceridemia (Fredrickson type IV hyperlipidemia).
- Reduce elevated TG and VLDL-C in patients with primary dysbetalipoproteinemia (Fredrickson type III hyperlipidemia).
- Reduce total-C and LDL-C in patients with homozygous familial hypercholesterolemia (HoFH) as an adjunct to other lipid-lowering treatments (e.g., LDL apheresis) or if such treatments are unavailable.

#### **1.3 Adolescent Patients with Heterozygous Familial Hypercholesterolemia (HeFH)**

Simvastatin tablets are indicated as an adjunct to diet to reduce total-C, LDL-C, and Apo B levels in adolescent boys and girls who are at least one year post-menarche, 10 to 17 years of age, with HeFH, if after an adequate trial of diet therapy the following findings are present:

1. LDL cholesterol remains  $\geq 190$  mg/dL; or
2. LDL cholesterol remains  $\geq 160$  mg/dL and
  - There is a positive family history of premature cardiovascular disease (CVD) or
  - Two or more other CVD risk factors are present in the adolescent patient.

The minimum goal of treatment in pediatric and adolescent patients is to achieve a mean LDL-C  $< 130$

mg/dL. The optimal age at which to initiate lipid-lowering therapy to decrease the risk of symptomatic adulthood CAD has not been determined.

## **1.4 Limitations of Use**

Simvastatin tablets have not been studied in conditions where the major abnormality is elevation of chylomicrons (i.e., hyperlipidemia Fredrickson types I and V).

## **2 DOSAGE AND ADMINISTRATION**

### **2.1 Recommended Dosing**

The usual dosage range is 5 to 40 mg/day. In patients with CHD or at high risk of CHD, simvastatin tablets can be started simultaneously with diet. The recommended usual starting dose is 10 or 20 mg once a day in the evening. For patients at high risk for a CHD event due to existing CHD, diabetes, peripheral vessel disease, history of stroke or other cerebrovascular disease, the recommended starting dose is 40 mg/day. Lipid determinations should be performed after 4 weeks of therapy and periodically thereafter.

### **2.2 Restricted Dosing for 80 mg**

Due to the increased risk of myopathy, including rhabdomyolysis, particularly during the first year of treatment, use of the 80 mg dose of simvastatin tablets should be restricted to patients who have been taking simvastatin 80 mg chronically (e.g., for 12 months or more) without evidence of muscle toxicity [*see Warnings and Precautions (5.1)*] .

Patients who are currently tolerating the 80 mg dose of simvastatin tablets who need to be initiated on an interacting drug that is contraindicated or is associated with a dose cap for simvastatin should be switched to an alternative statin with less potential for the drug-drug interaction.

Due to the increased risk of myopathy, including rhabdomyolysis, associated with the 80 mg dose of simvastatin tablets, patients unable to achieve their LDL-C goal utilizing the 40 mg dose of simvastatin tablets should not be titrated to the 80 mg dose, but should be placed on alternative LDL-C-lowering treatment(s) that provides greater LDL-C lowering.

### **2.3 Coadministration with Other Drugs**

*Patients taking Verapamil, Diltiazem, or Dronedarone*

- The dose of simvastatin tablets should not exceed 10 mg/day [*see Warnings and Precautions (5.1), Drug Interactions (7.3), and Clinical Pharmacology (12.3)*] .

*Patients taking Amiodarone, Amlodipine or Ranolazine*

- The dose of simvastatin tablets should not exceed 20 mg/day [*see Warnings and Precautions (5.1), Drug Interactions (7.3), and Clinical Pharmacology (12.3)*] .

### **2.4 Patients with Homozygous Familial Hypercholesterolemia**

The recommended dosage is 40 mg/day in the evening [*see Dosage and Administration, Restricted Dosing for 80 mg (2.2)*] . Simvastatin tablets should be used as an adjunct to other lipid-lowering treatments (e.g., LDL apheresis) in these patients or if such treatments are unavailable.

Simvastatin exposure is approximately doubled with concomitant use of lomitapide; therefore, the dose of simvastatin tablets should be reduced by 50% if initiating lomitapide. Simvastatin tablets dosage should not exceed 20 mg/day (or 40 mg/day for patients who have previously taken simvastatin tablets 80 mg/day chronically, e.g., for 12 months or more, without evidence of muscle toxicity) while taking lomitapide.

## **2.5 Adolescents (10 to 17 years of age) with Heterozygous Familial Hypercholesterolemia**

The recommended usual starting dose is 10 mg once a day in the evening. The recommended dosing range is 10 to 40 mg/day; the maximum recommended dose is 40 mg/day. Doses should be individualized according to the recommended goal of therapy [see *NCEP Pediatric Panel Guidelines*<sup>1</sup> and *Clinical Studies* (14.2)]. Adjustments should be made at intervals of 4 weeks or more.

---

<sup>1</sup> National Cholesterol Education Program (NCEP): Highlights of the Report of the Expert Panel on Blood Cholesterol Levels in Children and Adolescents. *Pediatrics*. 89(3):495-501. 1992.

## **2.6 Patients with Renal Impairment**

Because simvastatin tablets do not undergo significant renal excretion, modification of dosage should not be necessary in patients with mild to moderate renal impairment. However, caution should be exercised when simvastatin tablets are administered to patients with severe renal impairment; such patients should be started at 5 mg/day and be closely monitored [see *Warnings and Precautions* (5.1) and *Clinical Pharmacology* (12.3)] .

## **3 DOSAGE FORMS AND STRENGTHS**

- Tablets simvastatin 5 mg are yellow colored, round shaped, biconvex, film coated tablets, debossed with 'A' on one side and '15' on the other side.
- Tablets simvastatin 10 mg are light pink colored, round shaped, biconvex, film coated tablets, debossed with 'A' on one side and '01' on the other side.
- Tablets simvastatin 20 mg are light pink colored, round shaped, biconvex, film coated tablets, debossed with 'A' on one side and '02' on the other side.
- Tablets simvastatin 40 mg are pink colored, round shaped, biconvex, film coated tablets, debossed with 'A' on one side and '03' on the other side.
- Tablets simvastatin 80 mg are pink colored, capsule shaped, biconvex, film coated tablets, debossed with 'A' on one side and '04' on the other side.

## **4 CONTRAINDICATIONS**

Simvastatin tablets are contraindicated in the following conditions:

- Concomitant administration of strong CYP3A4 inhibitors (e.g., itraconazole, ketoconazole, posaconazole, voriconazole, HIV protease inhibitors, boceprevir, telaprevir, erythromycin, clarithromycin, telithromycin, nefazodone, and cobicistat-containing products) [see *Warnings and Precautions* (5.1)].
- Concomitant administration of gemfibrozil, cyclosporine, or danazol [see *Warnings and Precautions* (5.1)].
- Hypersensitivity to any component of this medication [see *Adverse Reactions* (6.2)] .
- Active liver disease, which may include unexplained persistent elevations in hepatic transaminase levels [see *Warnings and Precautions* (5.3)] .

- Women who are pregnant or may become pregnant. Serum cholesterol and triglycerides increase during normal pregnancy, and cholesterol or cholesterol derivatives are essential for fetal development. Because HMG-CoA reductase inhibitors (statins) decrease cholesterol synthesis and possibly the synthesis of other biologically active substances derived from cholesterol, simvastatin tablets may cause fetal harm when administered to a pregnant woman. Atherosclerosis is a chronic process and the discontinuation of lipid-lowering drugs during pregnancy should have little impact on the outcome of long-term therapy of primary hypercholesterolemia. There are no adequate and well-controlled studies of use with simvastatin tablets during pregnancy; however, in rare reports congenital anomalies were observed following intrauterine exposure to statins. In rat and rabbit animal reproduction studies, simvastatin revealed no evidence of teratogenicity. **Simvastatin tablets should be administered to women of childbearing age only when such patients are highly unlikely to conceive.** If the patient becomes pregnant while taking this drug, simvastatin tablets should be discontinued immediately and the patient should be apprised of the potential hazard to the fetus [see Use in Specific Populations (8.1)] .
- Nursing mothers. It is not known whether simvastatin is excreted into human milk; however, a small amount of another drug in this class does pass into breast milk. Because statins have the potential for serious adverse reactions in nursing infants, women who require treatment with simvastatin tablets should not breastfeed their infants [see Use in Specific Populations (8.3)] .

## 5 WARNINGS AND PRECAUTIONS

### 5.1 Myopathy/Rhabdomyolysis

Simvastatin occasionally causes myopathy manifested as muscle pain, tenderness or weakness with creatine kinase (CK) above ten times the upper limit of normal (ULN). Myopathy sometimes takes the form of rhabdomyolysis with or without acute renal failure secondary to myoglobinuria, and rare fatalities have occurred. The risk of myopathy is increased by elevated plasma levels of simvastatin and simvastatin acid. Predisposing factors for myopathy include advanced age ( $\geq 65$  years), female gender, uncontrolled hypothyroidism, and renal impairment. Chinese patients may be at increased risk for myopathy . Simvastatin occasionally causes myopathy manifested as muscle pain, tenderness or weakness with creatine kinase (CK) above ten times the upper limit of normal (ULN). Myopathy sometimes takes the form of rhabdomyolysis with or without acute renal failure secondary to myoglobinuria, and rare fatalities have occurred. The risk of myopathy is increased by elevated plasma levels of simvastatin and simvastatin acid. Predisposing factors for myopathy include advanced age ( $\geq 65$  years), female gender, uncontrolled hypothyroidism, and renal impairment. Chinese patients may be at increased risk for myopathy [see Use in Specific Populations (8.8)] .

In a clinical trial database in which 41,413 patients were treated with simvastatin, 24,747 (approximately 60%) of whom were enrolled in studies with a median follow-up of at least 4 years, the incidence of myopathy was approximately 0.03% and 0.08% at 20 and 40 mg/day, respectively. The incidence of myopathy with 80 mg (0.61%) was disproportionately higher than that observed at the lower doses. In these trials, patients were carefully monitored and some interacting medicinal products were excluded. **The risk of myopathy, including rhabdomyolysis, is dose related.** In a clinical trial database in which 41,413 patients were treated with simvastatin, 24,747 (approximately 60%) of whom were enrolled in studies with a median follow-up of at least 4 years, the incidence of myopathy was approximately 0.03% and 0.08% at 20 and 40 mg/day, respectively. The incidence of myopathy with 80 mg (0.61%) was disproportionately higher than that observed at the lower doses. In these trials, patients were carefully monitored and some interacting medicinal products were excluded.

In a clinical trial in which 12,064 patients with a history of myocardial infarction were treated with simvastatin (mean follow-up 6.7 years), the incidence of myopathy (defined as unexplained muscle weakness or pain with a serum creatine kinase [CK]  $>10$  times upper limit of normal [ULN]) in patients

on 80 mg/day was approximately 0.9% compared with 0.02% for patients on 20 mg/day. The incidence of rhabdomyolysis (defined as myopathy with a CK >40 times ULN) in patients on 80 mg/day was approximately 0.4% compared with 0% for patients on 20 mg/day. The incidence of myopathy, including rhabdomyolysis, was highest during the first year and then notably decreased during the subsequent years of treatment. In this trial, patients were carefully monitored and some interacting medicinal products were excluded. In a clinical trial in which 12,064 patients with a history of myocardial infarction were treated with simvastatin (mean follow-up 6.7 years), the incidence of myopathy (defined as unexplained muscle weakness or pain with a serum creatine kinase [CK] >10 times upper limit of normal [ULN]) in patients on 80 mg/day was approximately 0.9% compared with 0.02% for patients on 20 mg/day. The incidence of rhabdomyolysis (defined as myopathy with a CK >40 times ULN) in patients on 80 mg/day was approximately 0.4% compared with 0% for patients on 20 mg/day. The incidence of myopathy, including rhabdomyolysis, was highest during the first year and then notably decreased during the subsequent years of treatment. In this trial, patients were carefully monitored and some interacting medicinal products were excluded.

In most cases, muscle symptoms and CK increases resolved when treatment was promptly discontinued. Periodic CK determinations may be considered in patients starting therapy with simvastatin or whose dose is being increased, but there is no assurance that such monitoring will prevent myopathy. **The risk of myopathy, including rhabdomyolysis, is greater in patients on simvastatin 80 mg compared with other statin therapies with similar or greater LDL-C-lowering efficacy and compared with lower doses of simvastatin. Therefore, the 80 mg dose of simvastatin should be used only in patients who have been taking simvastatin 80 mg chronically (e.g., for 12 months or more) without evidence of muscle toxicity [see Dosage and Administration, Restricted Dosing for 80 mg (2.2)].** If, however, a patient who is currently tolerating the 80 mg dose of simvastatin needs to be initiated on an interacting drug that is contraindicated or is associated with a dose cap for simvastatin, that patient should be switched to an alternative statin with less potential for the drug-drug interaction. Patients should be advised of the increased risk of myopathy, including rhabdomyolysis, and to report promptly any unexplained muscle pain, tenderness or weakness. If symptoms occur, treatment should be discontinued immediately. [See Warnings and Precautions (5.2).]

**All patients starting therapy with simvastatin, or whose dose of simvastatin is being increased, should be advised of the risk of myopathy, including rhabdomyolysis, and told to report promptly any unexplained muscle pain, tenderness or weakness particularly if accompanied by malaise or fever or if muscle signs and symptoms persist after discontinuing simvastatin. Simvastatin therapy should be discontinued immediately if myopathy is diagnosed or suspected.** In most cases, muscle symptoms and CK increases resolved when treatment was promptly discontinued. Periodic CK determinations may be considered in patients starting therapy with simvastatin or whose dose is being increased, but there is no assurance that such monitoring will prevent myopathy.

Many of the patients who have developed rhabdomyolysis on therapy with simvastatin have had complicated medical histories, including renal insufficiency usually as a consequence of long-standing diabetes mellitus. Such patients merit closer monitoring. Simvastatin therapy should be discontinued if markedly elevated CPK levels occur or myopathy is diagnosed or suspected. Simvastatin therapy should also be temporarily withheld in any patient experiencing an acute or serious condition predisposing to the development of renal failure secondary to rhabdomyolysis, e.g., sepsis; hypotension; major surgery; trauma; severe metabolic, endocrine, or electrolyte disorders; or uncontrolled epilepsy. Many of the patients who have developed rhabdomyolysis on therapy with simvastatin have had complicated medical histories, including renal insufficiency usually as a consequence of long-standing diabetes mellitus. Such patients merit closer monitoring. Simvastatin therapy should be discontinued if markedly elevated CPK levels occur or myopathy is diagnosed or suspected. Simvastatin therapy should also be temporarily withheld in any patient experiencing an acute or serious condition predisposing to the



development of renal failure secondary to rhabdomyolysis, e.g., sepsis; hypotension; major surgery; trauma; severe metabolic, endocrine, or electrolyte disorders; or uncontrolled epilepsy.

### *Drug Interactions*

The risk of myopathy and rhabdomyolysis is increased by elevated plasma levels of simvastatin and simvastatin acid. Simvastatin is metabolized by the cytochrome P450 isoform 3A4. Certain drugs which inhibit this metabolic pathway can raise the plasma levels of simvastatin and may increase the risk of myopathy. These include itraconazole, ketoconazole, posaconazole, voriconazole, the macrolide antibiotics erythromycin and clarithromycin, and the ketolide antibiotic telithromycin, HIV protease inhibitors, boceprevir, telaprevir, the antidepressant nefazodone, cobicistat-containing products, or grapefruit juice . Combination of these drugs with simvastatin is contraindicated. If short-term treatment with strong CYP3A4 inhibitors is unavoidable, therapy with simvastatin must be suspended during the course of treatment . The risk of myopathy and rhabdomyolysis is increased by elevated plasma levels of simvastatin and simvastatin acid. Simvastatin is metabolized by the cytochrome P450 isoform 3A4. Certain drugs which inhibit this metabolic pathway can raise the plasma levels of simvastatin and may increase the risk of myopathy. These include itraconazole, ketoconazole, posaconazole, voriconazole, the macrolide antibiotics erythromycin and clarithromycin, and the ketolide antibiotic telithromycin, HIV protease inhibitors, boceprevir, telaprevir, the antidepressant nefazodone, cobicistat-containing products, or grapefruit juice [see *Clinical Pharmacology* (12.3)] . Combination of these drugs with simvastatin is contraindicated. If short-term treatment with strong CYP3A4 inhibitors is unavoidable, therapy with simvastatin must be suspended during the course of treatment [see *Contraindications* (4) and *Drug Interactions* (7.1)] .

The combined use of simvastatin with gemfibrozil, cyclosporine, or danazol is contraindicated . The combined use of simvastatin with gemfibrozil, cyclosporine, or danazol is contraindicated [see *Contraindications* (4) and *Drug Interactions* (7.1 and 7.2)] .

Caution should be used when prescribing other fibrates with simvastatin, as these agents can cause myopathy when given alone and the risk is increased when they are coadministered . Caution should be used when prescribing other fibrates with simvastatin, as these agents can cause myopathy when given alone and the risk is increased when they are coadministered [see *Drug Interactions* (7.2)] .

Cases of myopathy, including rhabdomyolysis, have been reported with simvastatin coadministered with colchicine, and caution should be exercised when prescribing simvastatin with colchicine . Cases of myopathy, including rhabdomyolysis, have been reported with simvastatin coadministered with colchicine, and caution should be exercised when prescribing simvastatin with colchicine [see *Drug Interactions* (7.7)] .

The benefits of the combined use of simvastatin with the following drugs should be carefully weighed against the potential risks of combinations: other lipid-lowering drugs (fibrates or, for patients with HoFH, lomitapide), amiodarone, dronedarone, verapamil, diltiazem, amlodipine, or ranolazine . The benefits of the combined use of simvastatin with the following drugs should be carefully weighed against the potential risks of combinations: other lipid-lowering drugs (fibrates or, for patients with HoFH, lomitapide), amiodarone, dronedarone, verapamil, diltiazem, amlodipine, or ranolazine [see *Dosage and Administration* (2.4), *Drug Interactions* (7.3)] .

Cases of myopathy, including rhabdomyolysis, have been observed with simvastatin coadministered with lipid-modifying doses ( $\geq 1$  g/day niacin) of niacin-containing products . Cases of myopathy, including rhabdomyolysis, have been observed with simvastatin coadministered with lipid-modifying

doses ( $\geq 1$  g/day niacin) of niacin-containing products [see *Drug Interactions (7.4)*].

Cases of rhabdomyolysis have been reported with simvastatin administered with daptomycin. Temporarily suspend simvastatin in patients taking daptomycin. Cases of rhabdomyolysis have been reported with simvastatin administered with daptomycin. Temporarily suspend simvastatin in patients taking daptomycin [see *Drug Interactions (7.8)*].

Prescribing recommendations for interacting agents are summarized in Table 1. Prescribing recommendations for interacting agents are summarized in Table 1 [see also *Dosage and Administration (2.3, 2.4)*, *Drug Interactions (7)*, *Clinical Pharmacology (12.3)*].

**Table 1: Drug Interactions Associated with Increased Risk of Myopathy/Rhabdomyolysis**

Interacting Agents	Prescribing Recommendations
Strong CYP3A4 Inhibitors, e.g.: Itraconazole Ketoconazole Posaconazole Voriconazole Erythromycin Clarithromycin Telithromycin HIV protease inhibitors Boceprevir Telaprevir Nefazodone Cobicistat-containing products Gemfibrozil Cyclosporine Danazol	Contraindicated with simvastatin
Niacin ( $\geq 1$ g/day)	For Chinese patients, not recommended with simvastatin
Verapamil Diltiazem Dronedaron	Do not exceed 10 mg simvastatin daily
Amiodarone Amlodipine Ranolazine	Do not exceed 20 mg simvastatin daily
Lomitapide	For patients with HoFH, do not exceed 20 mg simvastatin daily*
Daptomycin	Temporarily suspend simvastatin
Grapefruit juice	Avoid grapefruit juice

\* For patients with HoFH who have been taking 80 mg simvastatin chronically (e.g., for 12 months or more) without evidence of muscle toxicity, do not exceed 40 mg simvastatin when taking lomitapide.

## 5.2 Immune-Mediated Necrotizing Myopathy

There have been rare reports of immune-mediated necrotizing myopathy (IMNM), an autoimmune myopathy, associated with statin use. IMNM is characterized by: proximal muscle weakness and

elevated serum creatine kinase, which persist despite discontinuation of statin treatment; positive anti-HMG CoA reductase antibody; muscle biopsy showing necrotizing myopathy; and improvement with immunosuppressive agents. Additional neuromuscular and serologic testing may be necessary. Treatment with immunosuppressive agents may be required. Consider risk of IMNM carefully prior to initiation of a different statin. If therapy is initiated with a different statin, monitor for signs and symptoms of IMNM. There have been rare reports of immune-mediated necrotizing myopathy (IMNM), an autoimmune myopathy, associated with statin use. IMNM is characterized by: proximal muscle weakness and elevated serum creatine kinase, which persist despite discontinuation of statin treatment; positive anti-HMG CoA reductase antibody; muscle biopsy showing necrotizing myopathy; and improvement with immunosuppressive agents. Additional neuromuscular and serologic testing may be necessary. Treatment with immunosuppressive agents may be required. Consider risk of IMNM carefully prior to initiation of a different statin. If therapy is initiated with a different statin, monitor for signs and symptoms of IMNM.

### 5.3 Liver Dysfunction

**Persistent increases (to more than 3X the ULN) in serum transaminases have occurred in approximately 1% of patients who received simvastatin in clinical studies.** When drug treatment was interrupted or discontinued in these patients, the transaminase levels usually fell slowly to pretreatment levels. The increases were not associated with jaundice or other clinical signs or symptoms. There was no evidence of hypersensitivity.

In the Scandinavian Simvastatin Survival Study (4S) [*see Clinical Studies (14.1)*], the number of patients with more than one transaminase elevation to >3X ULN, over the course of the study, was not significantly different between the simvastatin and placebo groups (14 [0.7%] vs. 12 [0.6%]). Elevated transaminases resulted in the discontinuation of 8 patients from therapy in the simvastatin group (n=2,221) and 5 in the placebo group (n=2,223). Of the 1,986 simvastatin treated patients in 4S with normal liver function tests (LFTs) at baseline, 8 (0.4%) developed consecutive LFT elevations to >3X ULN and/or were discontinued due to transaminase elevations during the 5.4 years (median follow-up) of the study. Among these 8 patients, 5 initially developed these abnormalities within the first year. All of the patients in this study received a starting dose of 20 mg of simvastatin; 37% were titrated to 40 mg.

In 2 controlled clinical studies in 1,105 patients, the 12-month incidence of persistent hepatic transaminase elevation without regard to drug relationship was 0.9% and 2.1% at the 40 and 80 mg dose, respectively. No patients developed persistent liver function abnormalities following the initial 6 months of treatment at a given dose.

**It is recommended that liver function tests be performed before the initiation of treatment, and thereafter when clinically indicated.** There have been rare postmarketing reports of fatal and non-fatal hepatic failure in patients taking statins, including simvastatin. If serious liver injury with clinical symptoms and/or hyperbilirubinemia or jaundice occurs during treatment with simvastatin, promptly interrupt therapy. If an alternate etiology is not found do not restart simvastatin. Note that ALT may emanate from muscle, therefore ALT rising with CK may indicate myopathy [*see Warnings and Precautions (5.1)*].

The drug should be used with caution in patients who consume substantial quantities of alcohol and/or have a past history of liver disease. Active liver diseases or unexplained transaminase elevations are contraindications to the use of simvastatin.

Moderate (less than 3X ULN) elevations of serum transaminases have been reported following therapy with simvastatin. These changes appeared soon after initiation of therapy with simvastatin, were often transient, were not accompanied by any symptoms and did not require interruption of treatment.

## 5.4 Endocrine Function

Increases in HbA1c and fasting serum glucose levels have been reported with HMG-CoA reductase inhibitors, including simvastatin.

## 6 ADVERSE REACTIONS

### 6.1 Clinical Trials Experience

Because clinical trials are conducted under widely varying conditions, adverse reaction rates observed in the clinical trials of a drug cannot be directly compared to rates in the clinical trials of another drug and may not reflect the rates observed in practice.

In the pre-marketing controlled clinical studies and their open extensions (2,423 patients with median duration of follow-up of approximately 18 months), 1.4% of patients were discontinued due to adverse reactions. The most common adverse reactions that led to treatment discontinuation were: gastrointestinal disorders (0.5%), myalgia (0.1%), and arthralgia (0.1%). The most commonly reported adverse reactions (incidence  $\geq 5\%$ ) in simvastatin controlled clinical trials were: upper respiratory infections (9%), headache (7.4%), abdominal pain (7.3%), constipation (6.6%), and nausea (5.4%).

#### *Scandinavian Simvastatin Survival Study*

In 4S involving 4,444 (age range 35 to 71 years, 19% women, 100% Caucasians) treated with 20 to 40 mg/day of simvastatin (n=2,221) or placebo (n=2,223) over a median of 5.4 years, adverse reactions reported in  $\geq 2\%$  of patients and at a rate greater than placebo are shown in Table 2.

**Table 2: Adverse Reactions Reported Regardless of Causality by  $\geq 2\%$  of Patients Treated with Simvastatin and Greater than Placebo in 4S**

	Simvastatin (N = 2,221) %	Placebo (N = 2,223) %
<i>Body as a Whole</i>		
Edema/swelling	2.7	2.3
Abdominal pain	5.9	5.8
<i>Cardiovascular System Disorders</i>		
Atrial fibrillation	5.7	5.1
<i>Digestive System Disorders</i>		
Constipation	2.2	1.6
Gastritis	4.9	3.9
<i>Endocrine Disorders</i>		
Diabetes mellitus	4.2	3.6
<i>Musculoskeletal Disorders</i>		
Myalgia	3.7	3.2
<i>Nervous System/ Psychiatric Disorders</i>		
Headache	2.5	2.1
Insomnia	4	3.8
Vertigo	4.5	4.2
<i>Respiratory System Disorders</i>		
Bronchitis	6.6	6.3
Sinusitis	2.3	1.8

<i>Skin / Skin Appendage Disorders</i> Eczema	4.5	3
<i>Urogenital System Disorders</i> Infection, urinary tract	3.2	3.1

### *Heart Protection Study*

In the Heart Protection Study (HPS), involving 20,536 patients (age range 40 to 80 years, 25% women, 97% Caucasians, 3% other races) treated with simvastatin 40 mg/day (n=10,269) or placebo (n=10,267) over a mean of 5 years, only serious adverse reactions and discontinuations due to any adverse reactions were recorded. Discontinuation rates due to adverse reactions were 4.8% in patients treated with simvastatin compared with 5.1% in patients treated with placebo. The incidence of myopathy/rhabdomyolysis was <0.1% in patients treated with simvastatin.

### *Other Clinical Studies*

In a clinical trial in which 12,064 patients with a history of myocardial infarction were treated with simvastatin (mean follow-up 6.7 years), the incidence of myopathy (defined as unexplained muscle weakness or pain with a serum creatine kinase [CK] >10 times upper limit of normal [ULN]) in patients on 80 mg/day was approximately 0.9% compared with 0.02% for patients on 20 mg/day. The incidence of rhabdomyolysis (defined as myopathy with a CK >40 times ULN) in patients on 80 mg/day was approximately 0.4% compared with 0% for patients on 20 mg/day. The incidence of myopathy, including rhabdomyolysis, was highest during the first year and then notably decreased during the subsequent years of treatment. In this trial, patients were carefully monitored and some interacting medicinal products were excluded.

Other adverse reactions reported in clinical trials were: diarrhea, rash, dyspepsia, flatulence, and asthenia.

### *Laboratory Tests*

Marked persistent increases of hepatic transaminases have been noted [see *Warnings and Precautions* (5.3)]. Elevated alkaline phosphatase and  $\gamma$ -glutamyl transpeptidase have also been reported. About 5% of patients had elevations of CK levels of 3 or more times the normal value on one or more occasions. This was attributable to the noncardiac fraction of CK. [See *Warnings and Precautions* (5.1).]

### *Adolescent Patients (ages 10 to 17 years)*

In a 48-week, controlled study in adolescent boys and girls who were at least 1 year post-menarche, 10 to 17 years of age (43.4% female, 97.7% Caucasians, 1.7% Hispanics, 0.6% Multiracial) with heterozygous familial hypercholesterolemia (n=175), treated with placebo or simvastatin (10 to 40 mg daily), the most common adverse reactions observed in both groups were upper respiratory infection, headache, abdominal pain, and nausea [see *Use in Specific Populations* (8.4) and *Clinical Studies* (14.2)].

## **6.2 Postmarketing Experience**

Because the below reactions are reported voluntarily from a population of uncertain size, it is generally not possible to reliably estimate their frequency or establish a causal relationship to drug exposure. The following additional adverse reactions have been identified during postapproval use of simvastatin: pruritus, alopecia, a variety of skin changes (e.g., nodules, discoloration, dryness of skin/mucous membranes, changes to hair/nails), dizziness, muscle cramps, myalgia, pancreatitis, paresthesia,

peripheral neuropathy, vomiting, anemia, erectile dysfunction, interstitial lung disease, rhabdomyolysis, hepatitis/jaundice, fatal and non-fatal hepatic failure, and depression.

There have been rare reports of immune-mediated necrotizing myopathy associated with statin use [*see Warnings and Precautions (5.1)*].

An apparent hypersensitivity syndrome has been reported rarely which has included some of the following features: anaphylaxis, angioedema, lupus erythematosus-like syndrome, polymyalgia rheumatica, dermatomyositis, vasculitis, purpura, thrombocytopenia, leukopenia, hemolytic anemia, positive ANA, ESR increase, eosinophilia, arthritis, arthralgia, urticaria, asthenia, photosensitivity, fever, chills, flushing, malaise, dyspnea, toxic epidermal necrolysis, erythema multiforme, including Stevens-Johnson syndrome.

There have been rare postmarketing reports of cognitive impairment (e.g., memory loss, forgetfulness, amnesia, memory impairment, confusion) associated with statin use. These cognitive issues have been reported for all statins. The reports are generally nonserious, and reversible upon statin discontinuation, with variable times to symptom onset (1 day to years) and symptom resolution (median of 3 weeks).

## **7 DRUG INTERACTIONS**

### **7.1 Strong CYP3A4 Inhibitors, Cyclosporine, or Danazol**

Strong CYP3A4 inhibitors: Simvastatin, like several other inhibitors of HMG-CoA reductase, is a substrate of CYP3A4. Simvastatin is metabolized by CYP3A4 but has no CYP3A4 inhibitory activity; therefore it is not expected to affect the plasma concentrations of other drugs metabolized by CYP3A4.

Elevated plasma levels of HMG-CoA reductase inhibitory activity increases the risk of myopathy and rhabdomyolysis, particularly with higher doses of simvastatin. [*See Warnings and Precautions (5.1) and Clinical Pharmacology (12.3)*.] Concomitant use of drugs labeled as having a strong inhibitory effect on CYP3A4 is contraindicated [*see Contraindications (4)*]. If treatment with itraconazole, ketoconazole, posaconazole, voriconazole, erythromycin, clarithromycin or telithromycin is unavoidable, therapy with simvastatin must be suspended during the course of treatment.

Cyclosporine or Danazol: The risk of myopathy, including rhabdomyolysis is increased by concomitant administration of cyclosporine or danazol. Therefore, concomitant use of these drugs is contraindicated [*see Contraindications (4), Warnings and Precautions (5.1) and Clinical Pharmacology (12.3)*] .

### **7.2 Lipid-Lowering Drugs That Can Cause Myopathy When Given Alone**

Gemfibrozil: Contraindicated with simvastatin [*see Contraindications (4) and Warnings and Precautions (5.1)*] .

Other fibrates: Caution should be used when prescribing with simvastatin [*see Warnings and Precautions (5.1)*] .

### **7.3 Amiodarone, Dronedarone, Ranolazine, or Calcium Channel Blockers**

The risk of myopathy, including rhabdomyolysis, is increased by concomitant administration of amiodarone, dronedarone, ranolazine, or calcium channel blockers such as verapamil, diltiazem, or amlodipine [*see Dosage and Administration (2.3) and Warnings and Precautions (5.1), and Table 3 in Clinical Pharmacology (12.3)*] .

## 7.4 Niacin

Cases of myopathy/rhabdomyolysis have been observed with simvastatin coadministered with lipid-modifying doses ( $\geq 1$  g/day niacin) of niacin-containing products. The risk of myopathy is greater in Chinese patients. In a clinical trial (median follow-up 3.9 years) involving patients at high risk of cardiovascular disease and with well-controlled LDL-C levels on simvastatin 40 mg/day with or without ezetimibe 10 mg/day, there was no incremental benefit on cardiovascular outcomes with the addition of lipid-modifying doses ( $\geq 1$  g/day) of niacin. Coadministration of simvastatin with lipid-modifying doses ( $\geq 1$  g/day) of niacin is not recommended in Chinese patients. It is unknown if this risk applies to other Asian patients [see *Warnings and Precautions (5.1) and Use in Specific Populations (8.8)*].

## 7.5 Digoxin

In one study, concomitant administration of digoxin with simvastatin resulted in a slight elevation in digoxin concentrations in plasma. Patients taking digoxin should be monitored appropriately when simvastatin is initiated [see *Clinical Pharmacology (12.3)*].

## 7.6 Coumarin Anticoagulants

In two clinical studies, one in normal volunteers and the other in hypercholesterolemic patients, simvastatin 20 to 40 mg/day modestly potentiated the effect of coumarin anticoagulants: the prothrombin time, reported as International Normalized Ratio (INR), increased from a baseline of 1.7 to 1.8 and from 2.6 to 3.4 in the volunteer and patient studies, respectively. With other statins, clinically evident bleeding and/or increased prothrombin time has been reported in a few patients taking coumarin anticoagulants concomitantly. In such patients, prothrombin time should be determined before starting simvastatin and frequently enough during early therapy to ensure that no significant alteration of prothrombin time occurs. Once a stable prothrombin time has been documented, prothrombin times can be monitored at the intervals usually recommended for patients on coumarin anticoagulants. If the dose of simvastatin is changed or discontinued, the same procedure should be repeated. Simvastatin therapy has not been associated with bleeding or with changes in prothrombin time in patients not taking anticoagulants.

## 7.7 Colchicine

Cases of myopathy, including rhabdomyolysis, have been reported with simvastatin coadministered with colchicine, and caution should be exercised when prescribing simvastatin with colchicine.

## 7.8 Daptomycin

Cases of rhabdomyolysis have been reported with simvastatin administered with daptomycin. Both simvastatin and daptomycin can cause myopathy and rhabdomyolysis when given alone and the risk of myopathy and rhabdomyolysis may be increased by coadministration. Temporarily suspend simvastatin in patients taking daptomycin [see *Warnings and Precautions (5.1)*].

# 8 USE IN SPECIFIC POPULATIONS

## 8.1 Pregnancy

*Pregnancy Category X [See Contraindications (4).]*

Simvastatin is contraindicated in women who are or may become pregnant. Lipid lowering drugs offer

no benefit during pregnancy, because cholesterol and cholesterol derivatives are needed for normal fetal development. Atherosclerosis is a chronic process, and discontinuation of lipid-lowering drugs during pregnancy should have little impact on long-term outcomes of primary hypercholesterolemia therapy. There are no adequate and well-controlled studies of use with simvastatin during pregnancy; however, there are rare reports of congenital anomalies in infants exposed to statins *in utero*. Animal reproduction studies of simvastatin in rats and rabbits showed no evidence of teratogenicity. Serum cholesterol and triglycerides increase during normal pregnancy, and cholesterol or cholesterol derivatives are essential for fetal development. Because statins decrease cholesterol synthesis and possibly the synthesis of other biologically active substances derived from cholesterol, simvastatin may cause fetal harm when administered to a pregnant woman. If simvastatin is used during pregnancy or if the patient becomes pregnant while taking this drug, the patient should be apprised of the potential hazard to the fetus.

There are rare reports of congenital anomalies following intrauterine exposure to statins. In a review<sup>2</sup> of approximately 100 prospectively followed pregnancies in women exposed to simvastatin or another structurally related statin, the incidences of congenital anomalies, spontaneous abortions, and fetal deaths/stillbirths did not exceed those expected in the general population. However, the study was only able to exclude a 3- to 4-fold increased risk of congenital anomalies over the background rate. In 89% of these cases, drug treatment was initiated prior to pregnancy and was discontinued during the first trimester when pregnancy was identified.

Simvastatin was not teratogenic in rats or rabbits at doses (25, 10 mg/kg/day, respectively) that resulted in 3 times the human exposure based on mg/m<sup>2</sup> surface area. However, in studies with another structurally-related statin, skeletal malformations were observed in rats and mice.

Women of childbearing potential, who require treatment with simvastatin for a lipid disorder, should be advised to use effective contraception. For women trying to conceive, discontinuation of simvastatin should be considered. If pregnancy occurs, simvastatin should be immediately discontinued.

---

<sup>2</sup> Manson, J.M., Freyssinges, C., Ducrocq, M.B., Stephenson, W.P., Postmarketing Surveillance of Lovastatin and Simvastatin Exposure During Pregnancy, *Reproductive Toxicology*, 10(6):439-446, 1996.

### 8.3 Nursing Mothers

It is not known whether simvastatin is excreted in human milk. Because a small amount of another drug in this class is excreted in human milk and because of the potential for serious adverse reactions in nursing infants, women taking simvastatin should not nurse their infants. A decision should be made whether to discontinue nursing or discontinue drug, taking into account the importance of the drug to the mother [see *Contraindications* (4)] .

### 8.4 Pediatric Use

Safety and effectiveness of simvastatin in patients 10 to 17 years of age with heterozygous familial hypercholesterolemia have been evaluated in a controlled clinical trial in adolescent boys and in girls who were at least 1 year post-menarche. Patients treated with simvastatin had an adverse reaction profile similar to that of patients treated with placebo. **Doses greater than 40 mg have not been studied in this population.** In this limited controlled study, there was no significant effect on growth or sexual maturation in the adolescent boys or girls, or on menstrual cycle length in girls. [See *Dosage and Administration* (2.5), *Adverse Reactions* (6.1), *Clinical Studies* (14.2).] Adolescent females should be counseled on appropriate contraceptive methods while on simvastatin therapy [see *Contraindications* (4) and *Use in Specific Populations* (8.1)]. Simvastatin has not been studied in patients younger than 10 years



of age, nor in pre-menarchal girls.

## 8.5 Geriatric Use

Of the 2,423 patients who received simvastatin in Phase III clinical studies and the 10,269 patients in the Heart Protection Study who received simvastatin, 363 (15%) and 5,366 (52%), respectively were  $\geq 65$  years old. In HPS, 615 (6%) were  $\geq 75$  years old. No overall differences in safety or effectiveness were observed between these subjects and younger subjects, and other reported clinical experience has not identified differences in responses between the elderly and younger patients, but greater sensitivity of some older individuals cannot be ruled out. Since advanced age ( $\geq 65$  years) is a predisposing factor for myopathy, simvastatin should be prescribed with caution in the elderly. [See *Clinical Pharmacology* (12.3).]

A pharmacokinetic study with simvastatin showed the mean plasma level of statin activity to be approximately 45% higher in elderly patients between 70 to 78 years of age compared with patients between 18 to 30 years of age. In 4S, 1,021 (23%) of 4,444 patients were 65 or older. Lipid-lowering efficacy was at least as great in elderly patients compared with younger patients, and simvastatin significantly reduced total mortality and CHD mortality in elderly patients with a history of CHD. In HPS, 52% of patients were elderly (4,891 patients 65 to 69 years and 5,806 patients 70 years or older). The relative risk reductions of CHD death, non-fatal MI, coronary and non-coronary revascularization procedures, and stroke were similar in older and younger patients [see *Clinical Studies* (14.1)]. In HPS, among 32,145 patients entering the active run-in period, there were 2 cases of myopathy/rhabdomyolysis; these patients were aged 67 and 73. Of the 7 cases of myopathy/rhabdomyolysis among 10,269 patients allocated to simvastatin, 4 were aged 65 or more (at baseline), of whom one was over 75. There were no overall differences in safety between older and younger patients in either 4S or HPS.

Because advanced age ( $\geq 65$  years) is a predisposing factor for myopathy, including rhabdomyolysis, simvastatin should be prescribed with caution in the elderly. In a clinical trial of patients treated with simvastatin 80 mg/day, patients  $\geq 65$  years of age had an increased risk of myopathy, including rhabdomyolysis, compared to patients  $< 65$  years of age. [See *Warnings and Precautions* (5.1) and *Clinical Pharmacology* (12.3).]

## 8.6 Renal Impairment

Caution should be exercised when simvastatin is administered to patients with severe renal impairment. [See *Dosage and Administration* (2.6).]

## 8.7 Hepatic Impairment

Simvastatin is contraindicated in patients with active liver disease which may include unexplained persistent elevations in hepatic transaminase levels [see *Contraindications* (4) and *Warnings and Precautions* (5.3)].

## 8.8 Chinese Patients

In a clinical trial in which patients at high risk of cardiovascular disease were treated with simvastatin 40 mg/day (median follow-up 3.9 years), the incidence of myopathy was approximately 0.05% for non-Chinese patients (n=7367) compared with 0.24% for Chinese patients (n=5468). The incidence of myopathy for Chinese patients on simvastatin 40 mg/day or ezetimibe/simvastatin 10/40 mg/day coadministered with extended-release niacin 2 g/day was 1.24%.

Chinese patients may be at higher risk for myopathy, monitor patients appropriately. Coadministration of simvastatin with lipid-modifying doses ( $\geq 1$  g/day niacin) of niacin-containing products is not recommended in Chinese patients [see *Warnings and Precautions* (5.1), *Drug Interactions* (7.4)].

## 10 OVERDOSAGE

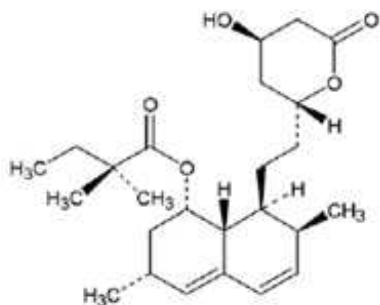
Significant lethality was observed in mice after a single oral dose of 9 g/m<sup>2</sup>. No evidence of lethality was observed in rats or dogs treated with doses of 30 and 100 g/m<sup>2</sup>, respectively. No specific diagnostic signs were observed in rodents. At these doses the only signs seen in dogs were emesis and mucoid stools.

A few cases of overdose with simvastatin have been reported; the maximum dose taken was 3.6 g. All patients recovered without sequelae. Supportive measures should be taken in the event of an overdose. The dialyzability of simvastatin and its metabolites in man is not known at present.

## 11 DESCRIPTION

Simvastatin is a lipid-lowering agent that is derived synthetically from a fermentation product of *Aspergillus terreus*. After oral ingestion, simvastatin, which is an inactive lactone, is hydrolyzed to the corresponding  $\beta$ -hydroxyacid form. This is an inhibitor of 3-hydroxy-3-methylglutaryl-coenzyme A (HMG-CoA) reductase. This enzyme catalyzes the conversion of HMG-CoA to mevalonate, which is an early and rate-limiting step in the biosynthesis of cholesterol.

Simvastatin is butanoic acid, 2,2-dimethyl-,1,2,3,7,8,8a-hexahydro-3,7-dimethyl-8-[2-(tetrahydro-4-hydroxy-6-oxo-2 *H*-pyran-2-yl)-ethyl]-1-naphthalenyl ester, [1 *S*-[1 $\alpha$ ,3 $\alpha$ ,7 $\beta$ ,8 $\beta$  (2 *S*\*,4 *S*\*),-8a $\beta$ ]]. The molecular formula of simvastatin is C<sub>25</sub>H<sub>38</sub>O<sub>5</sub> and its molecular weight is 418.57. Its structural formula is:



Simvastatin USP is a white to off-white, nonhygroscopic, crystalline powder that is practically insoluble in water, and freely soluble in chloroform, methanol and ethanol.

Simvastatin tablets USP for oral administration contain either 5 mg, 10 mg, 20 mg, 40 mg or 80 mg of simvastatin USP and the following inactive ingredients: ascorbic acid, lactose monohydrate, microcrystalline cellulose, pregelatinized starch (maize), hydroxypropyl cellulose, hypromellose, titanium dioxide, talc, citric acid monohydrate, isopropyl alcohol, magnesium stearate and butylated hydroxyanisole. Simvastatin 5 mg also contains ferric oxide yellow, simvastatin 10 mg and simvastatin 20 mg also contains ferric oxide red and ferric oxide yellow, simvastatin 40 mg and simvastatin 80 mg also contains ferric oxide red.

## 12 CLINICAL PHARMACOLOGY

## 12.1 Mechanism of Action

Simvastatin is a prodrug and is hydrolyzed to its active  $\beta$ -hydroxyacid form, simvastatin acid, after administration. Simvastatin is a specific inhibitor of 3-hydroxy-3-methylglutaryl-coenzyme A (HMG-CoA) reductase, the enzyme that catalyzes the conversion of HMG-CoA to mevalonate, an early and rate limiting step in the biosynthetic pathway for cholesterol. In addition, simvastatin reduces VLDL and TG and increases HDL-C.

## 12.2 Pharmacodynamics

Epidemiological studies have demonstrated that elevated levels of total-C, LDL-C, as well as decreased levels of HDL-C are associated with the development of atherosclerosis and increased cardiovascular risk. Lowering LDL-C decreases this risk. However, the independent effect of raising HDL-C or lowering TG on the risk of coronary and cardiovascular morbidity and mortality has not been determined.

## 12.3 Pharmacokinetics

Simvastatin is a lactone that is readily hydrolyzed *in vivo* to the corresponding  $\beta$ -hydroxyacid, a potent inhibitor of HMG-CoA reductase. Inhibition of HMG-CoA reductase is the basis for an assay in pharmacokinetic studies of the  $\beta$ -hydroxyacid metabolites (active inhibitors) and, following base hydrolysis, active plus latent inhibitors (total inhibitors) in plasma following administration of simvastatin.

Following an oral dose of  $^{14}\text{C}$ -labeled simvastatin in man, 13% of the dose was excreted in urine and 60% in feces. Plasma concentrations of total radioactivity (simvastatin plus  $^{14}\text{C}$ -metabolites) peaked at 4 hours and declined rapidly to about 10% of peak by 12 hours postdose. Since simvastatin undergoes extensive first-pass extraction in the liver, the availability of the drug to the general circulation is low (<5%).

Both simvastatin and its  $\beta$ -hydroxyacid metabolite are highly bound (approximately 95%) to human plasma proteins. Rat studies indicate that when radiolabeled simvastatin was administered, simvastatin-derived radioactivity crossed the blood-brain barrier.

The major active metabolites of simvastatin present in human plasma are the  $\beta$ -hydroxyacid of simvastatin and its 6'-hydroxy, 6'-hydroxymethyl, and 6'-exomethylene derivatives. Peak plasma concentrations of both active and total inhibitors were attained within 1.3 to 2.4 hours postdose. While the recommended therapeutic dose range is 5 to 40 mg/day, there was no substantial deviation from linearity of AUC of inhibitors in the general circulation with an increase in dose to as high as 120 mg. Relative to the fasting state, the plasma profile of inhibitors was not affected when simvastatin was administered immediately before an American Heart Association recommended low-fat meal.

In a study including 16 elderly patients between 70 and 78 years of age who received simvastatin 40 mg/day, the mean plasma level of HMG-CoA reductase inhibitory activity was increased approximately 45% compared with 18 patients between 18 to 30 years of age. Clinical study experience in the elderly (n=1522), suggests that there were no overall differences in safety between elderly and younger patients [*see Use in Specific Populations (8.5)*] .

Kinetic studies with another statin, having a similar principal route of elimination, have suggested that for a given dose level higher systemic exposure may be achieved in patients with severe renal insufficiency (as measured by creatinine clearance).

Simvastatin acid is a substrate of the transport protein OATP1B1. Concomitant administration of medicinal products that are inhibitors of the transport protein OATP1B1 may lead to increased plasma concentrations of simvastatin acid and an increased risk of myopathy. For example, cyclosporine has been shown to increase the AUC of statins; although the mechanism is not fully understood, the increase in AUC for simvastatin acid is presumably due, in part, to inhibition of CYP3A4 and/or OATP1B1.

The risk of myopathy is increased by high levels of HMG-CoA reductase inhibitory activity in plasma. Inhibitors of CYP3A4 can raise the plasma levels of HMG-CoA reductase inhibitory activity and increase the risk of myopathy [see *Warnings and Precautions (5.1)* and *Drug Interactions (7.1)*].

**Table 3: Effect of Coadministered Drugs or Grapefruit Juice on Simvastatin Systemic Exposure**

Coadministered Drug or Grapefruit Juice	Dosing of Coadministered Drug or Grapefruit Juice	Dosing of Simvastatin	Geometric Mean Ratio (Ratio* with / without coadministered drug) No Effect = 1		
				AUC	C <sub>max</sub>
Contraindicated with simvastatin [see Contraindications (4) and Warnings and Precautions (5.1)]					
Telithromycin <sup>†</sup>	200 mg QD for 4 days	80 mg	simvastatin acid / simvastatin	12 / 8.9	15 / 5.3
Nelfinavir <sup>†</sup>	1250 mg BID for 14 days	20 mg QD for 28 days	simvastatin acid / simvastatin	6	6.2
Itraconazole <sup>†</sup>	200 mg QD for 4 days	80 mg	simvastatin acid / simvastatin		13.1 / 13.1
Posaconazole	100 mg (oral suspension) QD for 13 days	40 mg	simvastatin acid / simvastatin	7.3 / 10.3	9.2 / 9.4
	200 mg (oral suspension) QD for 13 days	40 mg	simvastatin acid / simvastatin	8.5 / 10.6	9.5 / 11.4
Gemfibrozil	600 mg BID for 3 days	40 mg	simvastatin acid / simvastatin	2.85 / 1.35	2.18 / 0.91
Avoid grapefruit juice with simvastatin [see Warnings and Precautions (5.1)]					
Grapefruit Juice <sup>§</sup> (high dose)	200 mL of double-strength TID <sup>¶</sup>	60 mg single dose	simvastatin acid / simvastatin	7 / 16	
Grapefruit Juice <sup>§</sup> (low dose)	8 oz (about 237 mL) of single-strength <sup>#</sup>	20 mg single dose	simvastatin acid / simvastatin	1.3 / 1.9	
Avoid taking with >10 mg simvastatin, based on clinical and/or postmarketing experience [see Warnings and Precautions (5.1)]					
Verapamil SR	240 mg QD Days 1 to 7 then 240 mg BID on Days 8 to 10	80 mg on Day 10	simvastatin acid / simvastatin	2.3 / 2.5	2.4 / 2.1
Diltiazem	120 mg BID for 10 days	80 mg on Day 10	simvastatin acid / simvastatin	2.69 / 3.10	2.69 / 2.88
Diltiazem	120 mg BID for 14 days	20 mg on Day 14	simvastatin	4.6	3.6
Dronedarone	400 mg BID for 14 days	40 mg QD for 14 days	simvastatin acid / simvastatin	1.96 / 3.90	2.14 / 3.75
Avoid taking with >20 mg simvastatin, based on clinical and/or postmarketing experience [see Warnings and Precautions (5.1)]					
Amiodarone	400 mg QD for 3 days	40 mg on Day 3	simvastatin acid / simvastatin	1.75 / 1.76	1.72 / 1.79
Amlodipine	10 mg QD for 10 days	80 mg on Day 10	simvastatin acid / simvastatin	1.58	1.56

	10 mg QD x 10 days	Day 10	simvastatin	1.77	1.47
Ranolazine SR	1000 mg BID for 7 days	80 mg on	simvastatin acid	2.26	2.28
		Day 1 and Days 6 to 9	simvastatin	1.86	1.75
<b>Avoid taking with &gt;20 mg simvastatin (or 40 mg for patients who have previously taken 80 mg simvastatin chronically, e.g., for 12 months or more, without evidence of muscle toxicity), based on clinical experience</b>					
Lomitapide	60 mg QD for 7 days	40 mg single dose	simvastatin acid simvastatin	1.7 2	1.6 2
Lomitapide	10 mg QD for 7 days	20 mg single dose	simvastatin acid	1.4	1.4
			simvastatin	1.6	1.7
<b>No dosing adjustments required for the following:</b>					
Fenofibrate	160 mg QD x 14 days	80 mg QD on Days 8 to 14	simvastatin acid simvastatin	0.64 0.89	0.89 0.83
Niacin extended-release	2 g single dose	20 mg single dose	simvastatin acid simvastatin	1.6 1.4	1.84 1.08
Propranolol	80 mg single dose	80 mg single dose	total inhibitor	0.79	↓ from 33.6 to 21.1 ng·eq/mL
			active inhibitor	0.79	↓ from 7 to 4.7 ng·eq/mL

\* Results based on a chemical assay except results with propranolol as indicated.

† Results could be representative of the following CYP3A4 inhibitors: ketoconazole, erythromycin, clarithromycin, HIV protease inhibitors, and nefazodone.

‡ Simvastatin acid refers to the β-hydroxyacid of simvastatin.

§ The effect of amounts of grapefruit juice between those used in these two studies on simvastatin pharmacokinetics has not been studied.

¶ Double-strength: one can of frozen concentrate diluted with one can of water. Grapefruit juice was administered TID for 2 days, and 200 mL together with single dose simvastatin and 30 and 90 minutes following single dose simvastatin on Day 3.

# Single-strength: one can of frozen concentrate diluted with 3 cans of water. Grapefruit juice was administered with breakfast for 3 days, and simvastatin was administered in the evening on Day 3.

In a study of 12 healthy volunteers, simvastatin at the 80 mg dose had no effect on the metabolism of the probe cytochrome P450 isoform 3A4 (CYP3A4) substrates midazolam and erythromycin. This indicates that simvastatin is not an inhibitor of CYP3A4, and, therefore, is not expected to affect the plasma levels of other drugs metabolized by CYP3A4.

Coadministration of simvastatin (40 mg QD for 10 days) resulted in an increase in the maximum mean levels of cardioactive digoxin (given as a single 0.4 mg dose on day 10) by approximately 0.3 ng/mL.

## 13 NONCLINICAL TOXICOLOGY

### 13.1 Carcinogenesis, Mutagenesis, Impairment of Fertility

In a 72-week carcinogenicity study, mice were administered daily doses of simvastatin of 25, 100, and 400 mg/kg body weight, which resulted in mean plasma drug levels approximately 1, 4, and 8 times higher than the mean human plasma drug level, respectively (as total inhibitory activity based on AUC) after an 80 mg oral dose. Liver carcinomas were significantly increased in high-dose females and mid- and high-dose males with a maximum incidence of 90% in males. The incidence of adenomas of the

liver was significantly increased in mid- and high-dose females. Drug treatment also significantly increased the incidence of lung adenomas in mid- and high-dose males and females. Adenomas of the Harderian gland (a gland of the eye of rodents) were significantly higher in high-dose mice than in controls. No evidence of a tumorigenic effect was observed at 25 mg/kg/day.

In a separate 92-week carcinogenicity study in mice at doses up to 25 mg/kg/day, no evidence of a tumorigenic effect was observed (mean plasma drug levels were 1 times higher than humans given 80 mg simvastatin as measured by AUC).

In a two-year study in rats at 25 mg/kg/day, there was a statistically significant increase in the incidence of thyroid follicular adenomas in female rats exposed to approximately 11 times higher levels of simvastatin than in humans given 80 mg simvastatin (as measured by AUC).

A second two-year rat carcinogenicity study with doses of 50 and 100 mg/kg/day produced hepatocellular adenomas and carcinomas (in female rats at both doses and in males at 100 mg/kg/day). Thyroid follicular cell adenomas were increased in males and females at both doses; thyroid follicular cell carcinomas were increased in females at 100 mg/kg/day. The increased incidence of thyroid neoplasms appears to be consistent with findings from other statins. These treatment levels represented plasma drug levels (AUC) of approximately 7 and 15 times (males) and 22 and 25 times (females) the mean human plasma drug exposure after an 80 milligram daily dose.

No evidence of mutagenicity was observed in a microbial mutagenicity (Ames) test with or without rat or mouse liver metabolic activation. In addition, no evidence of damage to genetic material was noted in an *in vitro* alkaline elution assay using rat hepatocytes, a V-79 mammalian cell forward mutation study, an *in vitro* chromosome aberration study in CHO cells, or an *in vivo* chromosomal aberration assay in mouse bone marrow.

There was decreased fertility in male rats treated with simvastatin for 34 weeks at 25 mg/kg body weight (4 times the maximum human exposure level, based on AUC, in patients receiving 80 mg/day); however, this effect was not observed during a subsequent fertility study in which simvastatin was administered at this same dose level to male rats for 11 weeks (the entire cycle of spermatogenesis including epididymal maturation). No microscopic changes were observed in the testes of rats from either study. At 180 mg/kg/day, (which produces exposure levels 22 times higher than those in humans taking 80 mg/day based on surface area,  $\text{mg}/\text{m}^2$ ), seminiferous tubule degeneration (necrosis and loss of spermatogenic epithelium) was observed. In dogs, there was drug-related testicular atrophy, decreased spermatogenesis, spermatocytic degeneration and giant cell formation at 10 mg/kg/day, (approximately 2 times the human exposure, based on AUC, at 80 mg/day). The clinical significance of these findings is unclear.

## **13.2 Animal Toxicology and/or Pharmacology**

### *CNS Toxicity*

Optic nerve degeneration was seen in clinically normal dogs treated with simvastatin for 14 weeks at 180 mg/kg/day, a dose that produced mean plasma drug levels about 12 times higher than the mean plasma drug level in humans taking 80 mg/day.

A chemically similar drug in this class also produced optic nerve degeneration (Wallerian degeneration of retinogeniculate fibers) in clinically normal dogs in a dose-dependent fashion starting at 60 mg/kg/day, a dose that produced mean plasma drug levels about 30 times higher than the mean plasma drug level in humans taking the highest recommended dose (as measured by total enzyme inhibitory activity). This same drug also produced vestibulocochlear Wallerian-like degeneration and retinal ganglion cell chromatolysis in dogs treated for 14 weeks at 180 mg/kg/day, a dose that resulted in a

mean plasma drug level similar to that seen with the 60 mg/kg/day dose.

CNS vascular lesions, characterized by perivascular hemorrhage and edema, mononuclear cell infiltration of perivascular spaces, perivascular fibrin deposits and necrosis of small vessels were seen in dogs treated with simvastatin at a dose of 360 mg/kg/day, a dose that produced mean plasma drug levels that were about 14 times higher than the mean plasma drug levels in humans taking 80 mg/day. Similar CNS vascular lesions have been observed with several other drugs of this class.

There were cataracts in female rats after two years of treatment with 50 and 100 mg/kg/day (22 and 25 times the human AUC at 80 mg/day, respectively) and in dogs after three months at 90 mg/kg/day (19 times) and at two years at 50 mg/kg/day (5 times).

## 14 CLINICAL STUDIES

### 14.1 Clinical Studies in Adults

#### *Reductions in Risk of CHD Mortality and Cardiovascular Events*

In 4S, the effect of therapy with simvastatin on total mortality was assessed in 4,444 patients with CHD and baseline total cholesterol 212 to 309 mg/dL (5.5 to 8 mmol/L). In this multicenter, randomized, double-blind, placebo-controlled study, patients were treated with standard care, including diet, and either simvastatin 20 to 40 mg/day (n=2,221) or placebo (n=2,223) for a median duration of 5.4 years. Over the course of the study, treatment with simvastatin led to mean reductions in total-C, LDL-C and TG of 25%, 35%, and 10%, respectively, and a mean increase in HDL-C of 8%. Simvastatin significantly reduced the risk of mortality by 30% (p=0.0003, 182 deaths in the simvastatin group vs 256 deaths in the placebo group). The risk of CHD mortality was significantly reduced by 42% (p=0.00001, 111 vs 189 deaths). There was no statistically significant difference between groups in non-cardiovascular mortality. Simvastatin significantly decreased the risk of having major coronary events (CHD mortality plus hospital-verified and silent non-fatal myocardial infarction [MI]) by 34% (p<0.00001, 431 vs 622 patients with one or more events). The risk of having a hospital-verified non-fatal MI was reduced by 37%. Simvastatin significantly reduced the risk for undergoing myocardial revascularization procedures (coronary artery bypass grafting or percutaneous transluminal coronary angioplasty) by 37% (p<0.00001, 252 vs 383 patients). Simvastatin significantly reduced the risk of fatal plus non-fatal cerebrovascular events (combined stroke and transient ischemic attacks) by 28% (p=0.033, 75 vs 102 patients). Simvastatin reduced the risk of major coronary events to a similar extent across the range of baseline total and LDL cholesterol levels. Because there were only 53 female deaths, the effect of simvastatin on mortality in women could not be adequately assessed. However, simvastatin significantly lessened the risk of having major coronary events by 34% (60 vs 91 women with one or more event). The randomization was stratified by angina alone (21% of each treatment group) or a previous MI. Because there were only 57 deaths among the patients with angina alone at baseline, the effect of simvastatin on mortality in this subgroup could not be adequately assessed. However, trends in reduced coronary mortality, major coronary events and revascularization procedures were consistent between this group and the total study cohort. Additionally, simvastatin resulted in similar decreases in relative risk for total mortality, CHD mortality, and major coronary events in elderly patients (≥65 years), compared with younger patients.

The Heart Protection Study (HPS) was a large, multi-center, placebo-controlled, double-blind study with a mean duration of 5 years conducted in 20,536 patients (10,269 on simvastatin 40 mg and 10,267 on placebo). Patients were allocated to treatment using a covariate adaptive method<sup>3</sup> which took into account the distribution of 10 important baseline characteristics of patients already enrolled and minimized the imbalance of those characteristics across the groups. Patients had a mean age of 64 years (range 40 to 80 years), were 97% Caucasian and were at high risk of developing a major coronary event

because of existing CHD (65%), diabetes (Type 2, 26%; Type 1, 3%), history of stroke or other cerebrovascular disease (16%), peripheral vessel disease (33%), or hypertension in males  $\geq 65$  years (6%). At baseline, 3,421 patients (17%) had LDL-C levels below 100 mg/dL, of whom 953 (5%) had LDL-C levels below 80 mg/dL; 7,068 patients (34%) had levels between 100 and 130 mg/dL; and 10,047 patients (49%) had levels greater than 130 mg/dL.

The HPS results showed that simvastatin 40 mg/day significantly reduced: total and CHD mortality; non-fatal MI, stroke, and revascularization procedures (coronary and non-coronary) (see Table 4).

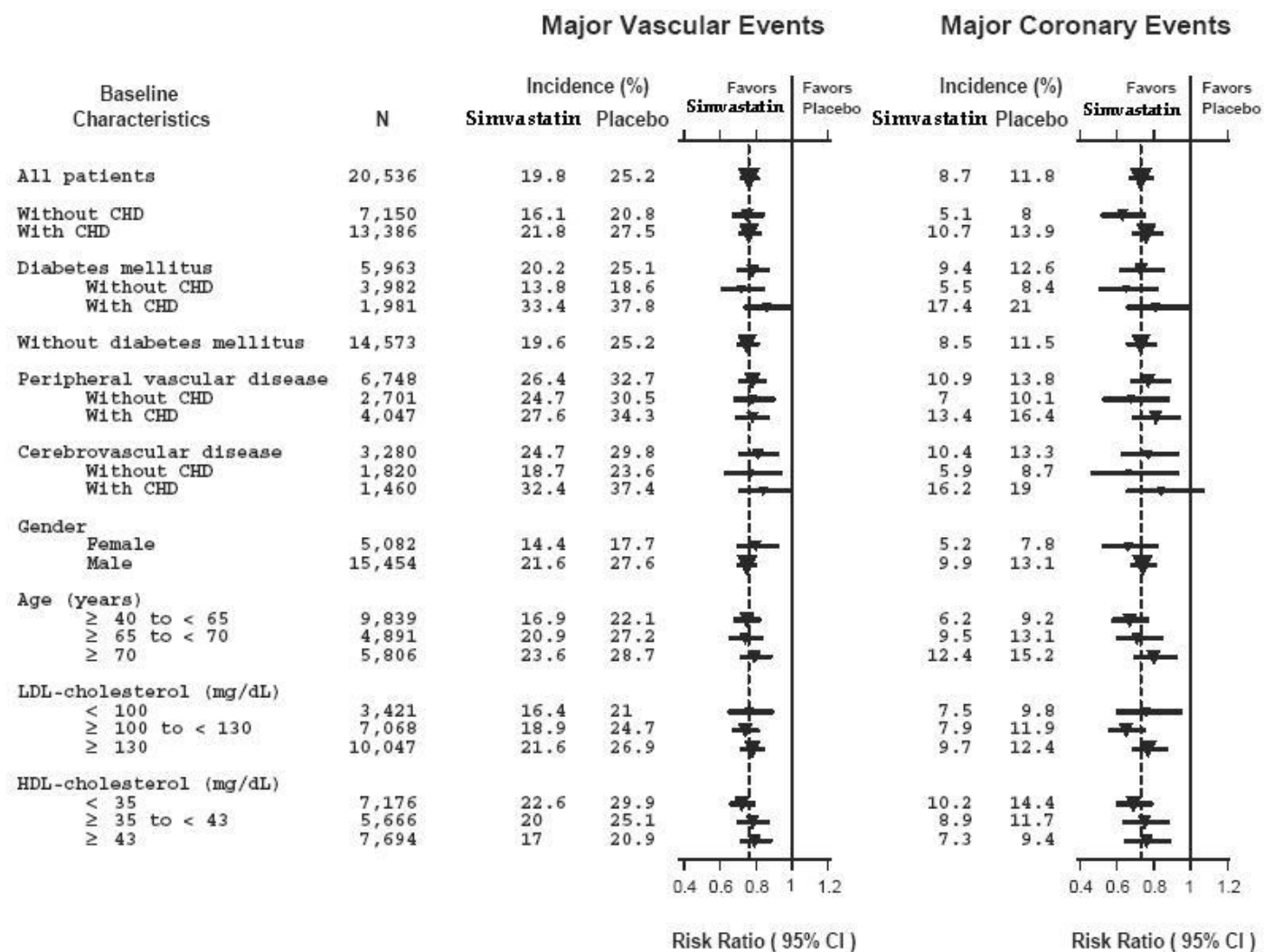
<sup>3</sup> D.R. Taves, Minimization: a new method of assigning patients to treatment and control groups. Clin. Pharmacol. Ther. 15 (1974), pp. 443-453

<b>Table 4: Summary of Heart Protection Study Results</b>				
<b>Endpoint</b>	<b>Simvastatin (N=10,269) n (%)*</b>	<b>Placebo (N=10,267) n (%)*</b>	<b>Risk Reduction (%) (95% CI)</b>	<b>p-Value</b>
<b>Primary</b>				
Mortality	1,328 (12.9)	1,507 (14.7)	13 (6 to 19)	p=0.0003
CHD mortality	587 (5.7)	707 (6.9)	18 (8 to 26)	p=0.0005
<b>Secondary</b>				
Non-fatal MI	357 (3.5)	574 (5.6)	38 (30 to 46)	p<0.0001
Stroke	444 (4.3)	585 (5.7)	25 (15 to 34)	p<0.0001
<b>Tertiary</b>				
Coronary revascularization	513 (5)	725 (7.1)	30 (22 to 38)	p<0.0001
Peripheral and other non-coronary revascularization	450 (4.4)	532 (5.2)	16 (5 to 26)	p=0.006
* n = number of patients with indicated event				

Two composite endpoints were defined in order to have sufficient events to assess relative risk reductions across a range of baseline characteristics (see Figure 1). A composite of major coronary events (MCE) was comprised of CHD mortality and non-fatal MI (analyzed by time-to-first event; 898 patients treated with simvastatin had events and 1,212 patients on placebo had events). A composite of major vascular events (MVE) was comprised of MCE, stroke and revascularization procedures including coronary, peripheral and other non-coronary procedures (analyzed by time-to-first event; 2,033 patients treated with simvastatin had events and 2,585 patients on placebo had events). Significant relative risk reductions were observed for both composite endpoints (27% for MCE and 24% for MVE,  $p<0.0001$ ). Treatment with simvastatin produced significant relative risk reductions for all components of the composite endpoints. The risk reductions produced by simvastatin in both MCE and MVE were evident and consistent regardless of cardiovascular disease related medical history at study entry (i.e., CHD alone; or peripheral vascular disease, cerebrovascular disease, diabetes or treated hypertension, with or without CHD), gender, age, creatinine levels up to the entry limit of 2.3 mg/dL, baseline levels of LDL-C, HDL-C, apolipoprotein B and A-1, baseline concomitant cardiovascular medications (i.e., aspirin, beta blockers, or calcium channel blockers), smoking status, alcohol intake, or obesity. Diabetics showed risk reductions for MCE and MVE due to simvastatin treatment regardless of baseline HbA1c levels or obesity with the greatest effects seen for diabetics without CHD.

Figure 1 The Effects of Treatment with Simvastatin on Major Vascular Events and Major Coronary Events in HPS





N = number of patients in each subgroup. The inverted triangles are point estimates of the relative risk, with their 95% confidence intervals represented as a line. The area of a triangle is proportional to the number of patients with MVE or MCE in the subgroup relative to the number with MVE or MCE, respectively, in the entire study population. The vertical solid line represents a relative risk of one. The vertical dashed line represents the point estimate of relative risk in the entire study population.

### Angiographic Studies

In the Multicenter Anti-Atheroma Study, the effect of simvastatin on atherosclerosis was assessed by quantitative coronary angiography in hypercholesterolemic patients with CHD. In this randomized, double-blind, controlled study, patients were treated with simvastatin 20 mg/day or placebo. Angiograms were evaluated at baseline, two and four years. The co-primary study endpoints were mean change per-patient in minimum and mean lumen diameters, indicating focal and diffuse disease, respectively. Simvastatin significantly slowed the progression of lesions as measured in the Year 4 angiogram by both parameters, as well as by change in percent diameter stenosis. In addition, simvastatin significantly decreased the proportion of patients with new lesions and with new total occlusions.

### Modifications of Lipid Profiles

#### Primary Hyperlipidemia (Fredrickson type IIa and IIb)

Simvastatin has been shown to be effective in reducing total-C and LDL-C in heterozygous familial and non-familial forms of hyperlipidemia and in mixed hyperlipidemia. Maximal to near maximal response is generally achieved within 4 to 6 weeks and maintained during chronic therapy. Simvastatin significantly decreased total-C, LDL-C, total-C/HDL-C ratio, and LDL-C/HDL-C ratio; simvastatin also decreased TG and increased HDL-C (see Table 5).

<b>Table 5: Mean Response in Patients with Primary Hyperlipidemia and Combined (mixed) Hyperlipidemia (Mean Percent Change from Baseline After 6 to 24 Weeks)</b>					
TREATMENT	N	TOTAL-C	LDL-C	HDL-C	TG*
<u>Lower Dose Comparative Study<sup>†</sup></u> (Mean % Change at Week 6)					
<b>Simvastatin</b> 5 mg q.p.m.	109	-19	-26	10	-12
<b>Simvastatin</b> 10 mg q.p.m.	110	-23	-30	12	-15
<u>Scandinavian Simvastatin Survival Study<sup>‡</sup></u> (Mean % Change at Week 6)					
Placebo	2223	-1	-1	0	-2
<b>Simvastatin</b> 20 mg q.p.m.	2221	-28	-38	8	-19
<u>Upper Dose Comparative Study<sup>§</sup></u> (Mean % Change Averaged at Weeks 18 and 24)					
<b>Simvastatin</b> 40 mg q.p.m.	433	-31	-41	9	-18
<b>Simvastatin</b> 80 mg q.p.m. ¶	664	-36	-47	8	-24
<u>Multi-Center Combined Hyperlipidemia Study<sup>#</sup></u> (Mean % Change at Week 6)					
Placebo	125	1	2	3	-4
<b>Simvastatin</b> 40 mg q.p.m.	123	-25	-29	13	-28
<b>Simvastatin</b> 80 mg q.p.m.	124	-31	-36	16	-33
* median percent change					
† mean baseline LDL-C 244 mg/dL and median baseline TG 168 mg/dL					
‡ mean baseline LDL-C 188 mg/dL and median baseline TG 128 mg/dL					
§ mean baseline LDL-C 226 mg/dL and median baseline TG 156 mg/dL					
¶ 21% and 36% median reduction in TG in patients with TG ≤200 mg/dL and TG >200 mg/dL, respectively. Patients with TG >350 mg/dL were excluded					
# mean baseline LDL-C 156 mg/dL and median baseline TG 391 mg/dL.					

*Hypertriglyceridemia (Fredrickson type IV)*

The results of a subgroup analysis in 74 patients with type IV hyperlipidemia from a 130-patient, double-blind, placebo-controlled, 3-period crossover study are presented in Table 6.

<b>Table 6: Six-week, Lipid-lowering Effects of Simvastatin in Type IV Hyperlipidemia</b> <b>Median Percent Change (25<sup>th</sup> and 75<sup>th</sup> percentile) from Baseline*</b>							
TREATMENT	N	Total-C	LDL-C	HDL-C	TG	VLDL-C	Non-HDL-C
Placebo	74	+2 (-7, +7)	+1 (-8, +14)	+3 (-3, +10)	-9 (-25, +13)	-7 (-25, +11)	+1 (-9, +8)
Simvastatin 40 mg/day	74	-25 (-34, -19)	-28 (-40, -17)	+11 (+5, +23)	-29 (-43, -16)	-37 (-54, -23)	-32 (-42, -23)
Simvastatin 80 mg/day	74	-32 (-38, -24)	-37 (-46, -26)	+15 (+5, +23)	-34 (-45, -18)	-41 (-57, -28)	-38 (-49, -32)

\* The median baseline values (mg/dL) for the patients in this study were: total-C = 254, LDL-C = 135, HDL-C = 36, TG = 404, VLDL-C = 83, and non-HDL-C = 215.

#### *Dysbetalipoproteinemia (Fredrickson type III)*

The results of a subgroup analysis in 7 patients with type III hyperlipidemia (dysbetalipoproteinemia) (apo E2/2) (VLDL-C/TG>0.25) from a 130-patient, double-blind, placebo-controlled, 3-period crossover study are presented in Table 7.

<b>Table 7: Six-week, Lipid-lowering Effects of Simvastatin in Type III Hyperlipidemia</b> <b>Median Percent Change (min, max) from Baseline*</b>							
TREATMENT	N	Total-C	LDL-C + IDL	HDL-C	TG	VLDL-C + IDL	Non-HDL-C
Placebo	7	-8 (-24, +34)	-8 (-27, +23)	-2 (-21, +16)	+4 (-22, +90)	-4 (-28, +78)	-8 (-26, -39)
Simvastatin 40 mg/day	7	-50 (-66, -39)	-50 (-60, -31)	+7 (-8, +23)	-41 (-74, -16)	-58 (-90, -37)	-57 (-72, -44)
Simvastatin 80 mg/day	7	-52 (-55, -41)	-51 (-57, -28)	+7 (-5, +29)	-38 (-58, +2)	-60 (-72, -39)	-59 (-61, -46)

\* The median baseline values (mg/dL) were: total-C = 324, LDL-C = 121, HDL-C = 31, TG = 411, VLDL-C = 170, and non-HDL-C = 291.

#### *Homozygous Familial Hypercholesterolemia*

In a controlled clinical study, 12 patients 15 to 39 years of age with homozygous familial hypercholesterolemia received simvastatin 40 mg/day in a single dose or in 3 divided doses, or 80 mg/day in 3 divided doses. In 11 patients with reductions in LDL-C, the mean LDL-C changes for the 40 and 80 mg doses were 14% (range 8% to 23%, median 12%) and 30% (range 14% to 46%, median 29%), respectively. One patient had an increase of 15% in LDL-C. Another patient with absent LDL-C receptor function had an LDL-C reduction of 41% with the 80 mg dose.

#### *Endocrine Function*

In clinical studies, simvastatin did not impair adrenal reserve or significantly reduce basal plasma cortisol concentration. Small reductions from baseline in basal plasma testosterone in men were observed in clinical studies with simvastatin, an effect also observed with other statins and the bile acid sequestrant cholestyramine. There was no effect on plasma gonadotropin levels. In a placebo-controlled, 12-week study there was no significant effect of simvastatin 80 mg on the plasma

testosterone response to human chorionic gonadotropin. In another 24-week study, simvastatin 20 to 40 mg had no detectable effect on spermatogenesis. In 4S, in which 4,444 patients were randomized to simvastatin 20 to 40 mg/day or placebo for a median duration of 5.4 years, the incidence of male sexual adverse events in the two treatment groups was not significantly different. Because of these factors, the small changes in plasma testosterone are unlikely to be clinically significant. The effects, if any, on the pituitary-gonadal axis in pre-menopausal women are unknown.

## 14.2 Clinical Studies in Adolescents

In a double-blind, placebo-controlled study, 175 patients (99 adolescent boys and 76 post-menarchal girls) 10 to 17 years of age (mean age 14.1 years) with heterozygous familial hypercholesterolemia (HeFH) were randomized to simvastatin (n=106) or placebo (n=67) for 24 weeks (base study). Inclusion in the study required a baseline LDL-C level between 160 and 400 mg/dL and at least one parent with an LDL-C level >189 mg/dL. The dosage of simvastatin (once daily in the evening) was 10 mg for the first 8 weeks, 20 mg for the second 8 weeks, and 40 mg thereafter. In a 24-week extension, 144 patients elected to continue therapy with simvastatin 40 mg or placebo.

Simvastatin significantly decreased plasma levels of total-C, LDL-C, and Apo B (see Table 8). Results from the extension at 48 weeks were comparable to those observed in the base study.

**Table 8: Lipid-Lowering Effects of Simvastatin in Adolescent Patients with Heterozygous Familial Hypercholesterolemia (Mean Percent Change from Baseline)**

Dosage	Duration	N		Total-C	LDL-C	HDL-C	TG*	Apo B
Placebo	24 Weeks	67	% Change from Baseline (95% CI)	1.6 (-2.2, 5.3)	1.1 (-3.4, 5.5)	3.6 (-0.7, 8)	-3.2 (-11.8, 5.4)	-0.5 (-4.7, 3.6)
			Mean baseline, mg/dL (SD)	278.6 (51.8)	211.9 (49)	46.9 (11.9)	90 (50.7)	186.3 (38.1)
Simvastatin	24 Weeks	106	% Change from Baseline (95% CI)	-26.5 (-29.6, -23.3)	-36.8 (-40.5, -33)	8.3 (4.6, 11.9)	-7.9 (-15.8, 0)	-32.4 (-35.9, -29)
			Mean baseline, mg/dL (SD)	270.2 (44)	203.8 (41.5)	47.7 (9)	78.3 (46)	179.9 (33.8)

\* median percent change

After 24 weeks of treatment, the mean achieved LDL-C value was 124.9 mg/dL (range: 64 to 289 mg/dL) in the simvastatin 40 mg group compared to 207.8 mg/dL (range: 128 to 334 mg/dL) in the placebo group.

The safety and efficacy of doses above 40 mg daily have not been studied in children with HeFH. The long-term efficacy of simvastatin therapy in childhood to reduce morbidity and mortality in adulthood has not been established.

## 16 HOW SUPPLIED/STORAGE AND HANDLING


**Simvastatin Tablets USP, 20 mg** are light pink colored, round shaped, biconvex, film coated tablets, debossed with A on one side and 02 on the other side. They are supplied as follows:

NDC 68071-2336-3 BOTTLES OF 30

NDC 68071-2336-9 BOTTLES OF 90

**Store at 20° to 25°C (68° to 77°F); excursions permitted to 15° to 30°C (59° to 86°F) [see USP Controlled Room Temperature].**

**PACKAGE LABEL-PRINCIPAL DISPLAY PANEL - 20 mg**

 NuCare Pharmaceuticals, Inc.

NDC: 68071-2336-9

**Simvastatin 20mg  
#90 Tablets**

Each film-coated tablet contains:  
20 mg of Simvastatin USP.

Round Shaped Light Pink Tablet Debossed:  
'A' on one side '02' on the other side

Product #: P1699090  
**Rx Only**

Simvastatin 20mg  
Lot: 000000 NDC: 68071-2336-09  
MFR NDC: 16714-683-03 Exp.: 00-00  
Serial# 00000000002

Simvastatin 20mg  
Lot: 000000 NDC: 68071-2336-09  
MFR NDC: 16714-683-03 Exp.: 00-00  
Serial# 00000000002

GTIN 00368071233698  
Serial# 00000000002  
Exp. Date 00-00  
LOT#: 000000

Call your doctor for medical advice about side effects. You may report side effects to FDA at 1-800-FDA-1088.

Take \_\_\_\_\_ times a day.  
every \_\_\_\_\_ hours

Manufactured by:  
Aurobindo Pharma Limited  
Mahabubnagar (Dt)-509302 India.  
Packaged By:  
NuCare Pharmaceuticals, Inc.  
Orange, CA 92867

Rev. 01/01/19

WARNING: KEEP OUT OF REACH OF CHILDREN

STORE AT CONTROLLED TEMPERATURE 59-86°F.

## SIMVASTATIN

simvastatin tablet, film coated

### Product Information

Product Type	HUMAN PRESCRIPTION DRUG	Item Code (Source)	NDC:68071-2336(NDC:16714-683)
Route of Administration	ORAL		

### Active Ingredient/Active Moiety

Ingredient Name	Basis of Strength	Strength
SIMVASTATIN (UNII: AGG2FN16EV) (SIMVASTATIN - UNII:AGG2FN16EV)	SIMVASTATIN	20 mg

### Inactive Ingredients

Ingredient Name	Strength
-----------------	----------

<b>ASCORBIC ACID</b> (UNII: PQ6CK8PD0R)	
<b>LACTOSE MONOHYDRATE</b> (UNII: EWQ57Q8I5X)	
<b>MICROCRYSTALLINE CELLULOSE</b> (UNII: OP1R32D61U)	
<b>STARCH, CORN</b> (UNII: O8232NY3SJ)	
<b>HYDROXYPROPYL CELLULOSE (1600000 WAMW)</b> (UNII: RFW2ET671P)	
<b>HYPROMELLOSE 2910 (6 MPAS)</b> (UNII: 0WZ8WG20P6)	
<b>TITANIUM DIOXIDE</b> (UNII: 15FIX9V2JP)	
<b>TALC</b> (UNII: 7SEV7J4R1U)	
<b>CITRIC ACID MONOHYDRATE</b> (UNII: 2968PHW8QP)	
<b>ISOPROPYL ALCOHOL</b> (UNII: ND2M416302)	
<b>MAGNESIUM STEARATE</b> (UNII: 70097M6I30)	
<b>BUTYLATED HYDROXYANISOLE</b> (UNII: REK4960K2U)	
<b>FERRIC OXIDE RED</b> (UNII: 1K09F3G675)	
<b>FERRIC OXIDE YELLOW</b> (UNII: EX438O2MRT)	

### Product Characteristics

<b>Color</b>	pink (Light Pink)	<b>Score</b>	no score
<b>Shape</b>	ROUND (Biconvex)	<b>Size</b>	8mm
<b>Flavor</b>		<b>Imprint Code</b>	A;02
<b>Contains</b>			

### Packaging

#	Item Code	Package Description	Marketing Start Date	Marketing End Date
1	NDC:68071-2336-9	90 in 1 BOTTLE; Type 0: Not a Combination Product	01/25/2021	
2	NDC:68071-2336-3	30 in 1 BOTTLE; Type 0: Not a Combination Product	01/25/2021	

### Marketing Information

Marketing Category	Application Number or Monograph Citation	Marketing Start Date	Marketing End Date
ANDA	ANDA077691	12/20/2006	

**Labeler** - NuCare Pharmaceuticals, Inc. (010632300)

### Establishment

Name	Address	ID/FEI	Business Operations
NuCare Pharmaceuticals, Inc.		010632300	repack(68071-2336)

Revised: 1/2021

NuCare Pharmaceuticals, Inc.