

CEFUROXIME AXETIL - cefuroxime axetil tablet, film coated
RPK Pharmaceuticals, Inc.

HIGHLIGHTS OF PRESCRIBING INFORMATION

These highlights do not include all the information needed to use CEFUROXIME AXETIL TABLETS safely and effectively. See full prescribing information for CEFUROXIME AXETIL TABLETS.

CEFUROXIME AXETIL tablets, for oral use

Initial U.S. Approval: 1987

----- **INDICATIONS AND USAGE** -----

Cefuroxime axetil tablet is a cephalosporin antibacterial drug indicated for the treatment of the following infections due to susceptible bacteria: (1)

- Pharyngitis/tonsillitis (adults and pediatric patients) (1.1)
- Acute bacterial otitis media (pediatric patients) (1.2)
- Acute bacterial maxillary sinusitis (adults and pediatric patients) (1.3)
- Acute bacterial exacerbations of chronic bronchitis (adults and pediatric patients 13 years and older) (1.4)
- Uncomplicated skin and skin-structure infections (adults and pediatric patients 13 years and older) (1.5)
- Uncomplicated urinary tract infections (adults and pediatric patients 13 years and older) (1.6)
- Uncomplicated gonorrhea (adults and pediatric patients 13 years and older) (1.7)
- Early Lyme disease (adults and pediatric patients 13 years and older) (1.8)

To reduce the development of drug-resistant bacteria and maintain the effectiveness of cefuroxime axetil and other antibacterial drugs, cefuroxime axetil should be used only to treat or prevent infections that are proven or strongly suspected to be caused by bacteria.

----- **DOSAGE AND ADMINISTRATION** -----

- Tablets and oral suspension are not bioequivalent and are therefore not substitutable on a milligram-per-milligram basis. (2.1)
- Administer tablets with or without food. (2.2)
- Administer cefuroxime axetil tablets as described in the dosage guidelines. (2.2)
- Dosage adjustment is required for patients with impaired renal function. (2.5)

Adult Patients and Pediatric Patients Dosage Guidelines for Cefuroxime Axetil Tablets		
Infection	Dosage	Duration (Days)
Adults and Adolescents (13 years and older)		
Pharyngitis/tonsillitis (mild to moderate)	250 mg every 12 hours	10
Acute bacterial maxillary sinusitis (mild to moderate)	250 mg every 12 hours	10
Acute bacterial exacerbations of chronic bronchitis (mild to moderate)	250 or 500 mg every 12 hours	10
Uncomplicated skin and skin-structure infections	250 or 500 mg every 12 hours	10
Uncomplicated urinary tract infections	250 mg every 12 hours	7 to 10
Uncomplicated gonorrhea	1,000 mg	single dose
Early Lyme disease	500 mg every 12 hours	20
Pediatric Patients younger than 13 years (who can swallow tablets whole)		
Acute bacterial otitis media	250 mg every 12 hours	10
Acute bacterial maxillary sinusitis	250 mg every 12 hours	10

-----**DOSAGE FORMS AND STRENGTHS**-----

- Tablets: 250 mg and 500 mg (3)

-----**CONTRAINDICATIONS**-----

Known hypersensitivity (e.g., anaphylaxis) to cefuroxime axetil or to other β -lactams (e.g., penicillins and cephalosporins). (4)

-----**WARNINGS AND PRECAUTIONS**-----

- Serious hypersensitivity (anaphylactic) reactions: In the event of a serious reaction, discontinue cefuroxime axetil and institute appropriate therapy. (5.1)
- *Clostridioides difficile*-associated diarrhea (CDAD): If diarrhea occurs, evaluate patients for CDAD. (5.2)

-----**ADVERSE REACTIONS**-----

The most common adverse reactions ($\geq 3\%$) for cefuroxime axetil tablets are diarrhea, nausea/vomiting, Jarisch-Herxheimer reaction, and vaginitis (early Lyme disease). (6.1)

To report SUSPECTED ADVERSE REACTIONS, contact Ascend Laboratories, LLC at 1-877-ASC-RX01 (877-272-7901) or FDA at 1-800-FDA-1088 or www.fda.gov/medwatch.

-----**DRUG INTERACTIONS**-----

- Drugs that reduce gastric acidity may lower the bioavailability of cefuroxime axetil. (7.1)
- Coadministration with probenecid increases systemic exposure to cefuroxime axetil and is therefore not recommended. (7.2)

See 17 for PATIENT COUNSELING INFORMATION.

Revised: 6/2023

FULL PRESCRIBING INFORMATION: CONTENTS*

1 INDICATIONS AND USAGE

- 1.1 Pharyngitis/Tonsillitis
- 1.2 Acute Bacterial Otitis Media
- 1.3 Acute Bacterial Maxillary Sinusitis
- 1.4 Acute Bacterial Exacerbations of Chronic Bronchitis
- 1.5 Uncomplicated Skin and Skin-Structure Infections
- 1.6 Uncomplicated Urinary Tract Infections
- 1.7 Uncomplicated Gonorrhea
- 1.8 Early Lyme Disease (erythema migrans)
- 1.10 Usage

2 DOSAGE AND ADMINISTRATION

- 2.1 Important Administration Instructions
- 2.2 Dosage for Cefuroxime Axetil Tablets
- 2.5 Dosage in Patients with Impaired Renal Function

3 DOSAGE FORMS AND STRENGTHS

4 CONTRAINDICATIONS

5 WARNINGS AND PRECAUTIONS

- 5.1 Anaphylactic Reactions
- 5.2 *Clostridioides difficile*-Associated Diarrhea
- 5.3 Potential for Microbial Overgrowth
- 5.4 Development of Drug-Resistant Bacteria
- 5.6 Interference with Glucose Tests

6 ADVERSE REACTIONS

- 6.1 Clinical Trials Experience
- 6.2 Postmarketing Experience

7 DRUG INTERACTIONS

- 7.1 Drugs that Reduce Gastric Acidity
- 7.2 Probenecid
- 7.3 Drug/Laboratory Test Interactions

8 USE IN SPECIFIC POPULATIONS

- 8.1 Pregnancy
- 8.2 Lactation
- 8.4 Pediatric Use
- 8.5 Geriatric Use
- 8.6 Renal Impairment

10 OVERDOSAGE

11 DESCRIPTION

12 CLINICAL PHARMACOLOGY

- 12.1 Mechanism of Action
- 12.3 Pharmacokinetics
- 12.4 Microbiology

13 NONCLINICAL TOXICOLOGY

- 13.1 Carcinogenesis, Mutagenesis, Impairment of Fertility

14 CLINICAL STUDIES

- 14.1 Acute Bacterial Maxillary Sinusitis
- 14.2 Early Lyme Disease

16 HOW SUPPLIED/STORAGE AND HANDLING

17 PATIENT COUNSELING INFORMATION

* Sections or subsections omitted from the full prescribing information are not listed.

FULL PRESCRIBING INFORMATION

1 INDICATIONS AND USAGE

1.1 Pharyngitis/Tonsillitis

Cefuroxime axetil tablets are indicated for the treatment of adult patients and pediatric patients (13 years and older) with mild-to-moderate pharyngitis/tonsillitis caused by susceptible strains of *Streptococcus pyogenes*.

Limitations of Use

- The efficacy of cefuroxime axetil in the prevention of rheumatic fever was not established in clinical trials.
- The efficacy of cefuroxime axetil in the treatment of penicillin-resistant strains of *Streptococcus pyogenes* has not been demonstrated in clinical trials.

1.2 Acute Bacterial Otitis Media

Cefuroxime axetil tablets are indicated for the treatment of pediatric patients (who can swallow tablets whole) with acute bacterial otitis media caused by susceptible strains of

Streptococcus pneumoniae, *Haemophilus influenzae* (including β -lactamase-producing strains), *Moraxella catarrhalis* (including β -lactamase-producing strains), or *Streptococcus pyogenes*.

1.3 Acute Bacterial Maxillary Sinusitis

Cefuroxime axetil tablets are indicated for the treatment of adult and pediatric patients (13 years and older) with mild-to-moderate acute bacterial maxillary sinusitis caused by susceptible strains of *Streptococcus pneumoniae* or *Haemophilus influenzae* (non- β -lactamase-producing strains only).

Limitations of Use

The effectiveness of Cefuroxime axetil for sinus infections caused by β -lactamase-producing *Haemophilus influenzae* or *Moraxella catarrhalis* in patients with acute bacterial maxillary sinusitis was not established due to insufficient numbers of these isolates in the clinical trials [see *Clinical Studies (14.1)*].

1.4 Acute Bacterial Exacerbations of Chronic Bronchitis

Cefuroxime axetil tablets are indicated for the treatment of adult patients and pediatric patients (aged 13 and older) with mild-to-moderate acute bacterial exacerbations of chronic bronchitis caused by susceptible strains of *Streptococcus pneumoniae*, *Haemophilus influenzae* (β -lactamase-negative strains), or *Haemophilus parainfluenzae* (β -lactamase-negative strains).

1.5 Uncomplicated Skin and Skin-Structure Infections

Cefuroxime axetil tablets are indicated for the treatment of adult patients and pediatric patients (aged 13 and older) with uncomplicated skin and skin-structure infections caused by susceptible strains of *Staphylococcus aureus* (including β -lactamase-producing strains) or *Streptococcus pyogenes*.

1.6 Uncomplicated Urinary Tract Infections

Cefuroxime axetil tablets are indicated for the treatment of adult patients and pediatric patients (aged 13 and older) with uncomplicated urinary tract infections caused by susceptible strains of *Escherichia coli* or *Klebsiella pneumoniae*.

1.7 Uncomplicated Gonorrhea

Cefuroxime axetil tablets are indicated for the treatment of adult patients and pediatric patients (aged 13 and older) with uncomplicated gonorrhea, urethral and endocervical, caused by penicillinase-producing and non-penicillinase-producing susceptible strains of *Neisseria gonorrhoeae* and uncomplicated gonorrhea, rectal, in females, caused by non-penicillinase-producing susceptible strains of *Neisseria gonorrhoeae*.

1.8 Early Lyme Disease (erythema migrans)

Cefuroxime axetil tablets are indicated for the treatment of adult patients and pediatric patients (aged 13 and older) with early Lyme disease (erythema migrans) caused by susceptible strains of *Borrelia burgdorferi*.

1.10 Usage

To reduce the development of drug-resistant bacteria and maintain the effectiveness of cefuroxime axetil and other antibacterial drugs, cefuroxime axetil should be used only to treat or prevent infections that are proven or strongly suspected to be caused by susceptible bacteria. When culture and susceptibility information are available, they should be considered in selecting or modifying antibacterial therapy. In the absence of such data, local epidemiology and susceptibility patterns may contribute to the empiric selection of therapy.

2 DOSAGE AND ADMINISTRATION

2.1 Important Administration Instructions

- Cefuroxime axetil tablets and cefuroxime axetil for oral suspension are not bioequivalent and are therefore not substitutable on a milligram-per-milligram basis [see *Clinical Pharmacology (12.3)*].
- Administer cefuroxime axetil tablets as described in the appropriate dosage guidelines [see *Dosage and Administration (2.2)*].
- Administer cefuroxime axetil tablets with or without food.
- Pediatric patients (aged 13 years and older) who cannot swallow the cefuroxime axetil tablets whole should receive cefuroxime axetil for oral suspension because the tablet has a strong, persistent bitter taste when crushed [see *Dosage and Administration (2.2)*].

2.2 Dosage for Cefuroxime Axetil Tablets

Administer cefuroxime axetil tablets as described in the dosage guidelines table below with or without food.

Table 1. Adult Patients and Pediatric Patients Dosage Guidelines for Cefuroxime Axetil Tablets

Infection	Dosage	Duration (Days)
Adults and Adolescents (13 years and older)		
Pharyngitis/tonsillitis (mild to moderate)	250 mg every 12 hours	10
Acute bacterial maxillary sinusitis (mild to moderate)	250 mg every 12 hours	10
Acute bacterial exacerbations of chronic bronchitis (mild to moderate)	250 or 500 mg every 12 hours	10a

Uncomplicated skin and skin-structure infections	250 or 500 mg every 12 hours	10
Uncomplicated urinary tract infections	250 mg every 12 hours	7 to 10
Uncomplicated gonorrhea	1,000 mg	single dose
Early Lyme disease	500 mg every 12 hours	20
Pediatric Patients younger than 13 years (who can swallow tablets whole) ^b		
Acute bacterial otitis media	250 mg every 12 hours	10
Acute bacterial maxillary sinusitis	250 mg every 12 hours	10

a The safety and effectiveness of cefuroxime axetil administered for less than 10 days in patients with acute exacerbations of chronic bronchitis have not been established.

b When crushed, the tablet has a strong, persistent bitter taste. Therefore, patients who cannot swallow the tablet whole should receive the oral suspension.

2.5 Dosage in Patients with Impaired Renal Function

A dosage interval adjustment is required for patients whose creatinine clearance is less than 30 mL/min, as listed in Table 4 below, because cefuroxime is eliminated primarily by the kidney [see *Clinical Pharmacology (12.3)*].

Table 4. Dosing in Adults with Renal Impairment

Creatinine Clearance (mL/min)	Recommended Dosage
≥30	No dosage adjustment
10 to <30	Standard individual dose given every 24 hours
<10 (without	

10 (WITHOUT hemodialysis)	Standard individual dose given every 48 hours
Hemodialysis	A single additional standard dose should be given at the end of each dialysis

3 DOSAGE FORMS AND STRENGTHS

Cefuroxime axetil tablets, USP 250 mg of cefuroxime (as cefuroxime axetil), are blue, capsule-shaped, biconvex, film-coated tablets with “204” debossed on one side and plain on the other side.

Cefuroxime Axetil Tablets, USP 500 mg of cefuroxime (as cefuroxime axetil), are blue, capsule-shaped, biconvex, film-coated tablets with 203” debossed on one side and plain on the other side.

4 CONTRAINDICATIONS

Cefuroxime axetil is contraindicated in patients with a known hypersensitivity (e.g., anaphylaxis) to cefuroxime axetil or to other β -lactam antibacterial drugs (e.g., penicillins and cephalosporins).

5 WARNINGS AND PRECAUTIONS

5.1 Anaphylactic Reactions

Serious and occasionally fatal hypersensitivity (anaphylactic) reactions have been reported in patients on β -lactam antibacterials, including cefuroxime axetil [see *Adverse Reactions (6.2)*]. These reactions are more likely to occur in individuals with a history of β -lactam hypersensitivity and/or a history of sensitivity to multiple allergens. There have been reports of individuals with a history of penicillin hypersensitivity who have experienced severe reactions when treated with cephalosporins. Cefuroxime axetil is contraindicated in patients with a known hypersensitivity to cefuroxime axetil or other β -lactam antibacterial drugs [see *Contraindications (4)*]. Before initiating therapy with cefuroxime axetil, inquire about previous hypersensitivity reactions to penicillins, cephalosporins, or other allergens. If an allergic reaction occurs, discontinue cefuroxime axetil and institute appropriate therapy.

5.2 *Clostridioides difficile*-Associated Diarrhea

Clostridioides difficile-associated diarrhea (CDAD) has been reported with use of nearly all antibacterial agents, including cefuroxime axetil, and may range in severity from mild diarrhea to fatal colitis. Treatment with antibacterial agents alters the normal flora of the colon leading to overgrowth of *C. difficile*.

C. difficile produces toxins A and B which contribute to the development of CDAD. Hypertoxin-producing strains of *C. difficile* cause increased morbidity and mortality, as these infections can be refractory to antimicrobial therapy and may require colectomy. CDAD must be considered in all patients who present with diarrhea following antibiotic

use. Careful medical history is necessary since CDAD has been reported to occur over 2 months after the administration of antibacterial agents.

If CDAD is suspected or confirmed, ongoing antibiotic use not directed against *C. difficile* may need to be discontinued. Appropriate fluid and electrolyte management, protein supplementation, antibiotic treatment of *C. difficile*, and surgical evaluation should be instituted as clinically indicated.

5.3 Potential for Microbial Overgrowth

The possibility of superinfections with fungal or bacterial pathogens should be considered during therapy.

5.4 Development of Drug-Resistant Bacteria

Prescribing cefuroxime axetil either in the absence of a proven or strongly suspected bacterial infection or a prophylactic indication is unlikely to provide benefit to the patient and increases the risk of the development of drug-resistant bacteria.

5.6 Interference with Glucose Tests

A false-positive result for glucose in the urine may occur with copper reduction tests, and a false-negative result for blood/plasma glucose may occur with ferricyanide tests in subjects receiving cefuroxime axetil [see *Drug Interactions (7.3)*].

6 ADVERSE REACTIONS

The following serious and otherwise important adverse reaction is described in greater detail in the Warnings and Precautions section of the label:

Anaphylactic Reactions [see *Warnings and Precautions (5.1)*].

6.1 Clinical Trials Experience

Because clinical trials are conducted under widely varying conditions, adverse reaction rates observed in the clinical trials of a drug cannot be directly compared with rates in the clinical trials of another drug and may not reflect the rates observed in practice.

Tablets

Multiple-Dose Dosing Regimens with 7 to 10 Days' Duration: In multiple-dose clinical trials, 912 subjects were treated with cefuroxime axetil (125 to 500 mg twice daily). It is noted that 125 mg twice daily is not an approved dosage. Twenty (2.2%) subjects discontinued medication due to adverse reactions. Seventeen (85%) of the 20 subjects who discontinued therapy did so because of gastrointestinal disturbances, including diarrhea, nausea, vomiting, and abdominal pain. The percentage of subjects treated with cefuroxime axetil who discontinued study drug because of adverse reactions was similar at daily doses of 1,000, 500, and 250 mg (2.3%, 2.1%, and 2.2%, respectively). However, the incidence of gastrointestinal adverse reactions increased with the higher recommended doses.

The adverse reactions in Table 5 are for subjects (n = 912) treated with cefuroxime axetil in multiple-dose clinical trials.

Table 5. Adverse Reactions (≥1%) after Multiple-Dose Regimens with

Cefuroxime Axetil Tablets

Adverse Reaction	Cefuroxime Axetil (n = 912)
Blood and lymphatic system disorders	
Eosinophilia	1%
Gastrointestinal disorders	
Diarrhea	4%
Nausea/Vomiting	3%
Investigations	
Transient elevation in AST	2%
Transient elevation in ALT	2%
Transient elevation in LDH	1%

The following adverse reactions occurred in less than 1% but greater than 0.1% of subjects (n = 912) treated with cefuroxime axetil in multiple-dose clinical trials.

*Immune System Disorders:*Hives, swollen tongue.

*Metabolism and Nutrition Disorders:*Anorexia.

*Nervous System Disorders:*Headache.

*Cardiac Disorders:*Chest pain.

*Respiratory Disorders:*Shortness of breath.

*Gastrointestinal Disorders:*Abdominal pain, abdominal cramps, flatulence, indigestion, mouth ulcers.

*Skin and Subcutaneous Tissue Disorders:*Rash, itch.

*Renal and Urinary Disorders:*Dysuria.

*Reproductive System and Breast Disorders:*Vaginitis, vulvar itch.

*General Disorders and Administration Site Conditions:*Chills, sleepiness, thirst.

*Investigations:*Positive Coombs' test.

*Early Lyme Disease with 20-Day Regimen:*Two multicenter trials assessed cefuroxime axetil tablets 500 mg twice daily for 20 days. The most common drug-related adverse experiences were diarrhea (10.6%), Jarisch-Herxheimer reaction (5.6%), and vaginitis (5.4%). Other adverse experiences occurred with frequencies comparable to those reported with 7 to 10 days' dosing.

*Single-Dose Regimen for Uncomplicated Gonorrhea:*In clinical trials using a single 1,000-mg dose of cefuroxime axetil, 1,061 subjects were treated for uncomplicated gonorrhea.

The adverse reactions in Table 6 were for subjects treated with a single dose of 1,000 mg cefuroxime axetil in U.S. clinical trials.

Table 6. Adverse Reactions ($\geq 1\%$) after Single-Dose Regimen with 1,000-mg Cefuroxime Axetil Tablets for Uncomplicated Gonorrhea

Adverse Reaction	Cefuroxime axetil (n = 1,061)
Gastrointestinal disorders	
Nausea/Vomiting	7%
Diarrhea	4%

The following adverse reactions occurred in less than 1% but greater than 0.1% of subjects (n = 1,061) treated with a single dose of cefuroxime axetil 1,000 mg for uncomplicated gonorrhea in U.S. clinical trials.

Infections and Infestations: Vaginal candidiasis.

Nervous System Disorders: Headache, dizziness, somnolence.

Cardiac Disorders: Tightness/pain in chest, tachycardia.

Gastrointestinal Disorders: Abdominal pain, dyspepsia.

Skin and Subcutaneous Tissue Disorders: Erythema, rash, pruritus.

Musculoskeletal and Connective Tissue Disorders: Muscle cramps, muscle stiffness, muscle spasm of neck, lockjaw-type reaction.

Renal and Urinary Disorders: Bleeding/pain in urethra, kidney pain.

Reproductive System and Breast Disorders:

Vaginal itch, vaginal discharge.

6.2 Postmarketing Experience

The following adverse reactions have been identified during post-approval use of cefuroxime axetil. Because these reactions are reported voluntarily from a population of uncertain size, it is not always possible to reliably estimate their frequency or establish a causal relationship to drug exposure.

Blood and Lymphatic System Disorders

Hemolytic anemia, leukopenia, pancytopenia, thrombocytopenia.

Gastrointestinal Disorders

Pseudomembranous colitis [see *Warnings and Precautions (5.2)*].

Hepatobiliary Disorders

Hepatic impairment including hepatitis and cholestasis, jaundice.

Immune System Disorders

Anaphylaxis, serum sickness-like reaction, acute myocardial ischemia with or without myocardial infarction may occur as part of an allergic reaction.

Investigations

Increased prothrombin time.

Nervous System Disorders

Seizure, encephalopathy.

Renal and Urinary Disorders

Renal dysfunction.

Skin and Subcutaneous Tissue Disorders

Angioedema, erythema multiforme, Stevens-Johnson syndrome, toxic epidermal necrolysis, urticaria.

7 DRUG INTERACTIONS

7.1 Drugs that Reduce Gastric Acidity

Drugs that reduce gastric acidity may result in a lower bioavailability of cefuroxime axetil compared with administration in the fasting state. Administration of drugs that reduce gastric acidity may negate the food effect of increased absorption of cefuroxime axetil when administered in the postprandial state. Administer cefuroxime axetil at least 1 hour before or 2 hours after administration of short-acting antacids. Histamine-2 (H₂) antagonists and proton pump inhibitors should be avoided.

7.2 Probenecid

Concomitant administration of probenecid with cefuroxime axetil tablets increases serum concentrations of cefuroxime [see *Clinical Pharmacology (12.3)*].
Coadministration of probenecid with cefuroxime axetil is not recommended.

7.3 Drug/Laboratory Test Interactions

A false-positive reaction for glucose in the urine may occur with copper reduction tests (e.g., Benedict's or Fehling's solution), but not with enzyme-based tests for glycosuria. As a false-negative result may occur in the ferricyanide test, it is recommended that either the glucose oxidase or hexokinase method be used to determine blood/plasma glucose levels in patients receiving cefuroxime axetil. The presence of cefuroxime does not interfere with the assay of serum and urine creatinine by the alkaline picrate method.

8 USE IN SPECIFIC POPULATIONS

8.1 Pregnancy

Risk Summary

Available data from published epidemiologic studies, case series, and case reports over several decades with cephalosporin use, including cefuroxime axetil, in pregnant women have not established drug-associated risks of major birth defects, miscarriage, or adverse maternal or fetal outcomes (*see Data*).

In studies in pregnant mice and rats administered oral cefuroxime axetil during organogenesis at 14 and 9 times the maximum recommended human dose (MRHD) based on body surface area, respectively, there were no adverse developmental outcomes (*see Data*). The estimated background risk of major birth defects and

miscarriage for the indicated populations are unknown. All pregnancies have a background risk of birth defects, loss, or other adverse outcomes. In the U.S. general population, the estimated background risk of major birth defects and miscarriage in clinically recognized pregnancies is 2% to 4% and 15% to 20%, respectively.

Clinical Considerations

Disease-Associated Maternal and/or Embryo/Fetal Risk: Maternal gonorrhea may be associated with preterm birth, low neonatal birth weight, chorioamnionitis, intrauterine growth restriction, small for gestational age, and premature rupture of membranes. Perinatal transmission of gonorrhea to the offspring can result in infant blindness, joint infections, and bloodstream infections.

Data

Human Data: While available studies cannot definitively establish the absence of risk, published data from epidemiologic studies, case series, and case reports over several decades have not identified an association with cephalosporin use (including cefuroxime axetil) during pregnancy and major birth defects, miscarriage, or other adverse maternal or fetal outcomes. Available studies have methodologic limitations, including small sample size, retrospective data collection, and inconsistent comparator groups. *Animal Data:* Studies performed with oral cefuroxime axetil administered to pregnant mice during organogenesis (Gestation Days 7 through 16) at doses up to 3,200 mg/kg/day (14 times the MRHD based on body surface area); and in rats dosed during organogenesis and lactation (Gestation Days 7 through 16 and Gestation Days 17 through Lactation Day 21, respectively) at doses up to 1,000 mg/kg/day (9 times the MRHD based on body surface area) have revealed no adverse developmental outcomes.

8.2 Lactation

Risk Summary

Based on several published case reports describing multiple lactating women who received cefuroxime via intravenous, intramuscular, and oral routes, cefuroxime is present in human milk. The highest maternal milk concentration described occurred in lactating women 8 hours after an intramuscular administration of cefuroxime 750 mg. Allowing for an infant milk consumption of 150 mL/kg/day, the estimated breastfed infant dose would be less than 1% of the adult dose. No data are available on the effects of the drug on the breastfed infant or the effects of the drug on milk production. The developmental and health benefits of breastfeeding should be considered along with the mother's clinical need for cefuroxime and any potential adverse effects on the breastfed infant from cefuroxime or from the underlying maternal condition.

8.4 Pediatric Use

The safety and effectiveness of cefuroxime axetil have been established for pediatric patients aged 3 months to 12 years for acute bacterial maxillary sinusitis based upon its approval in adults. Use of cefuroxime axetil in pediatric patients is supported by pharmacokinetic and safety data in adults and pediatric patients, and by clinical and microbiological data from adequate and well-controlled trials of the treatment of acute bacterial maxillary sinusitis in adults and of acute otitis media with effusion in pediatric patients. It is also supported by postmarketing adverse events surveillance. [See

Indications and Usage (1), Dosage and Administration (2), Adverse Reactions (6), Clinical Pharmacology (12.3).]

8.5 Geriatric Use

Of the total number of subjects who received cefuroxime axetil in 20 clinical trials, 375 were aged 65 and older while 151 were aged 75 and older. No overall differences in safety or effectiveness were observed between these subjects and younger adult subjects. Reported clinical experience has not identified differences in responses between the elderly and younger adult patients, but greater sensitivity of some older individuals cannot be ruled out.

Cefuroxime is substantially excreted by the kidney, and the risk of adverse reactions may be greater in patients with impaired renal function. Because elderly patients are more likely to have decreased renal function, care should be taken in dose selection, and it may be useful to monitor renal function.

8.6 Renal Impairment

Reducing the dosage of cefuroxime axetil is recommended for adult patients with severe renal impairment (creatinine clearance <30 mL/min) [*see Dosage and Administration (2.5), Clinical Pharmacology (12.3)*].

10 OVERDOSAGE

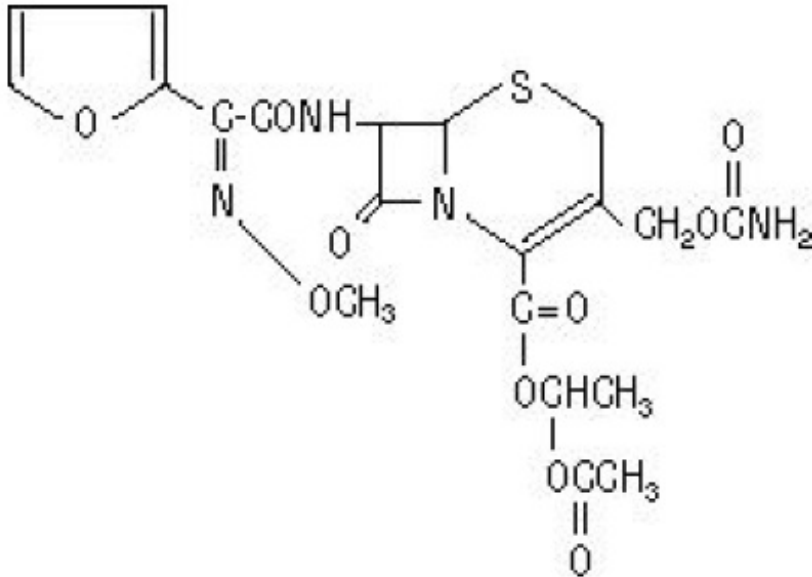
Overdosage of cephalosporins can cause cerebral irritation leading to convulsions or encephalopathy. Serum levels of cefuroxime can be reduced by hemodialysis and peritoneal dialysis.

11 DESCRIPTION

Cefuroxime axetil tablets, USP contain cefuroxime as cefuroxime axetil. Cefuroxime axetil is a semisynthetic, cephalosporin antibacterial drug for oral administration.

The chemical name of cefuroxime axetil (1-(acetyloxy) ethyl ester of cefuroxime) is (*RS*)-1 hydroxyethyl (6*R*,7*R*)-7-[2-(2-furyl)glyoxyl-amido]-3-(hydroxymethyl)-8-oxo-5-thia-1 azabicyclo[4.2.0]-oct-2-ene-2-carboxylate, 72-(*Z*)-(O-methyl-oxime), 1-acetate 3-carbamate. Its molecular formula is C₂₀H₂₂N₄O₁₀S, and it has a molecular weight of 510.48.

Cefuroxime axetil is in the amorphous form and has the following structural formula:



Cefuroxime axetil tablets, USP are film-coated and contain the equivalent of 250 or 500 mg of cefuroxime as cefuroxime axetil. Cefuroxime axetil tablets, USP contain the inactive ingredients microcrystalline cellulose, croscarmellose sodium, sodium lauryl sulfate, colloidal silicon dioxide, calcium stearate, calcium carbonate, crospovidone, hypromellose, titanium dioxide, propylene glycol, FD & C blue no.1 Aluminium lake.

12 CLINICAL PHARMACOLOGY

12.1 Mechanism of Action

Cefuroxime axetil is an antibacterial drug [see *Microbiology* (12.4)].

12.3 Pharmacokinetics

Absorption

After oral administration, cefuroxime axetil is absorbed from the gastrointestinal tract and rapidly hydrolyzed by nonspecific esterases in the intestinal mucosa and blood to cefuroxime. Serum pharmacokinetic parameters for cefuroxime following administration of cefuroxime axetil tablets to adults are shown in Table 8.

Table 8. Pharmacokinetics of Cefuroxime Administered in the Postprandial State as Cefuroxime Axetil Tablets to Adults^a

Dose^b (Cefuroxime Equivalent)	Peak Plasma Concentration (mcg/mL)	Time of Peak Plasma Concentration (h)	Mean Elimination Half-life (h)	AUC (mcg•h/mL)
125 mg	2.1	2.2	1.2	6.7
250 mg	4.1	2.5	1.2	12.9
500 mg	7	3	1.2	27.4

1,000 mg	13.6	2.5	1.3	50
----------	------	-----	-----	----

^aMean values of 12 healthy adult volunteers.

^bDrug administered immediately after a meal.

Effect of Food: Absorption of the tablet is greater when taken after food (absolute bioavailability increases from 37% to 52%). Despite this difference in absorption, the clinical and bacteriologic responses of subjects were independent of food intake at the time of tablet administration in 2 trials where this was assessed.

All pharmacokinetic and clinical effectiveness and safety trials in pediatric subjects using the suspension formulation were conducted in the fed state. No data are available on the absorption kinetics of the suspension formulation when administered to fasted pediatric subjects.

Lack of Bioequivalence: Oral suspension was not bioequivalent to tablets when tested in healthy adults. The tablet and oral suspension formulations are NOT substitutable on a milligram-per-milligram basis. The area under the curve for the suspension averaged 91% of that for the tablet, and the peak plasma concentration for the suspension averaged 71% of the peak plasma concentration of the tablets. Therefore, the safety and effectiveness of both the tablet and oral suspension formulations were established in separate clinical trials.

Distribution

Cefuroxime is distributed throughout the extracellular fluids. Approximately 50% of serum cefuroxime is bound to protein.

Metabolism

The axetil moiety is metabolized to acetaldehyde and acetic acid.

Excretion

Cefuroxime is excreted unchanged in the urine; in adults, approximately 50% of the administered dose is recovered in the urine within 12 hours. The pharmacokinetics of cefuroxime in pediatric subjects have not been studied. Until further data are available, the renal elimination of cefuroxime axetil established in adults should not be extrapolated to pediatric subjects.

Specific Populations

Patients with Renal Impairment: In a trial of 28 adults with normal renal function or severe renal impairment (creatinine clearance <30 mL/min), the elimination half-life was prolonged in relation to severity of renal impairment. Prolongation of the dosage interval is recommended in adult patients with creatinine clearance <30 mL/min [see *Dosage and Administration* (2.5)].

Geriatric Patients: In a trial of 20 elderly subjects (mean age = 83.9 years) having a mean creatinine clearance of 34.9 mL/min, the mean serum elimination half-life was prolonged to 3.5 hours; however, despite the lower elimination of cefuroxime in geriatric patients, dosage adjustment based on age is not necessary [see *Use in Specific Populations* (8.5)].

Drug Interaction Studies

Concomitant administration of probenecid with cefuroxime axetil tablets increases the cefuroxime area under the serum concentration versus time curve and maximum serum concentration by 50% and 21%, respectively [see *Drug Interactions(7.2)*].

12.4 Microbiology

Mechanism of Action

Cefuroxime axetil is a bactericidal agent that acts by inhibition of bacterial cell wall synthesis. Cefuroxime axetil has activity in the presence of some β -lactamases, both penicillinases and cephalosporinases, of gram-negative and gram-positive bacteria.

Resistance

Resistance to cefuroxime axetil is primarily through hydrolysis by β -lactamase, alteration of penicillin-binding proteins (PBPs), decreased permeability, and the presence of bacterial efflux pumps.

Susceptibility to cefuroxime axetil will vary with geography and time; local susceptibility data should be consulted, if available. Beta-lactamase-negative, ampicillin-resistant (BLNAR) isolates of *H. influenzae* should be considered resistant to cefuroxime axetil.

Antimicrobial Activity

Cefuroxime axetil has been shown to be active against most isolates of the following bacteria, both in vitro and in clinical infections [see *Indications and Usage (1)*]:

Aerobic Bacteria:

Gram-positive bacteria

- *Staphylococcus aureus* (methicillin-susceptible isolates only)
- *Streptococcus pneumoniae*
- *Streptococcus pyogenes*

Gram-negative bacteria

- *Escherichia coli*^a
- *Klebsiella pneumoniae*^a
- *Haemophilus influenzae*
- *Haemophilus parainfluenzae*
- *Moraxella catarrhalis*
- *Neisseria gonorrhoeae*

^a Most extended spectrum β -lactamase (ESBL)-producing and carbapenemase-producing isolates are resistant to cefuroxime axetil.

Spirochetes

- *Borrelia burgdorferi*

The following in vitro data are available, but their clinical significance is unknown. At least 90 percent of the following bacteria exhibit an in vitro minimum inhibitory concentration (MIC) less than or equal to the susceptible breakpoint for cefuroxime against isolates of similar genus or organism group. However, the efficacy of cefuroxime axetil in treating clinical infections caused by these bacteria has not been established in adequate and well-controlled clinical trials.

Aerobic Bacteria:

Gram-positive bacteria

- *Staphylococcus epidermidis* (methicillin-susceptible isolates only)
- *Staphylococcus saprophyticus* (methicillin-susceptible isolates only)
- *Streptococcus agalactiae*

Gram-negative bacteria

- *Morganella morganii*
- *Proteus inconstans*
- *Proteus mirabilis*
- *Providencia rettgeri*

Anaerobic Bacteria:

Gram-positive bacteria

- *Peptococcus niger*

Susceptibility Testing

For specific information regarding susceptibility test interpretive criteria and associated test methods and quality control standards recognized by FDA for this drug, please see: <https://www.fda.gov/STIC>.

13 NONCLINICAL TOXICOLOGY

13.1 Carcinogenesis, Mutagenesis, Impairment of Fertility

Although lifetime studies in animals have not been performed to evaluate carcinogenic potential, no mutagenic activity was found for cefuroxime axetil in a battery of bacterial mutation tests. Positive results were obtained in an in vitro chromosome aberration assay; however, negative results were found in an in vivo micronucleus test at doses up to 1.5 g/kg. Fertility studies in rats (males dosed for 70 days prior to and through mating; females dosed 21 days prior to mating through lactation) at doses up to 1,000 mg/kg/day (9 times the MRHD based on body surface area) have revealed no adverse effects on fertility.

14 CLINICAL STUDIES

14.1 Acute Bacterial Maxillary Sinusitis

One adequate and well-controlled trial was performed in subjects with acute bacterial maxillary sinusitis. In this trial, each subject had a maxillary sinus aspirate collected by sinus puncture before treatment was initiated for presumptive acute bacterial sinusitis. All subjects had radiographic and clinical evidence of acute maxillary sinusitis. In the trial, the clinical effectiveness of cefuroxime axetil in treating acute maxillary sinusitis was comparable to an oral antimicrobial agent containing a specific β -lactamase inhibitor. However, microbiology data demonstrated cefuroxime axetil to be effective in treating acute bacterial maxillary sinusitis due only to *Streptococcus pneumoniae* or non- β -lactamase-producing *Haemophilus influenzae*. Insufficient numbers of β -lactamase-producing *Haemophilus influenzae* and *Moraxella catarrhalis* isolates were obtained in this trial to adequately evaluate the effectiveness of cefuroxime axetil in treating acute bacterial maxillary sinusitis due to these 2 organisms.

This trial randomized 317 adult subjects, 132 subjects in the U.S. and 185 subjects in South America.

Table 10 shows the results of the intent-to-treat analysis.

Table 10. Clinical Effectiveness of Cefuroxime Axetil Tablets in the Treatment of Acute Bacterial Maxillary Sinusitis

	U.S. Subjects ^a		South American Subjects ^b	
	Cefuroxime Axetil Tablets 250 mg Twice Daily (n = 49)	Control ^c (n = 43)	Cefuroxime Axetil Tablets 250 mg Twice Daily (n = 49)	Control ^c (n = 43)
Clinical success (cure + improvement)	65%	53%	77%	74%
Clinical cure	53%	44%	72%	64%
Clinical improvement	12%	9%	5%	10%

^a 95% confidence interval around the success difference [-0.08, +0.32].

^b 95% confidence interval around the success difference [-0.10, +0.16].

^c Control was an antibacterial drug containing a β -lactamase inhibitor.

In this trial and in a supporting maxillary puncture trial, 15 evaluable subjects had non- β -lactamase-producing *Haemophilus influenzae* as the identified pathogen. Of these, 67% (10/15) had this pathogen eradicated. Eighteen (18) evaluable subjects had *Streptococcus pneumoniae* as the identified pathogen. Of these, 83% (15/18) had this pathogen eradicated.

14.2 Early Lyme Disease

Two adequate and well-controlled trials were performed in subjects with early Lyme disease. All subjects presented with physician-documented erythema migrans, with or without systemic manifestations of infection. Subjects were assessed at 1 month posttreatment for success in treating early Lyme disease (Part I) and at 1 year posttreatment for success in preventing the progression to the sequelae of late Lyme disease (Part II).

A total of 355 adult subjects (181 treated with cefuroxime axetil and 174 treated with doxycycline) were randomized in the 2 trials, with diagnosis of early Lyme disease confirmed in 79% (281/355). The clinical diagnosis of early Lyme disease in these subjects was validated by 1) blinded expert reading of photographs, when available, of the pretreatment erythema migrans skin lesion, and 2) serologic confirmation (using enzyme-linked immunosorbent assay [ELISA] and immunoblot assay [“Western” blot]) of the presence of antibodies specific to *Borrelia burgdorferi*, the etiologic agent of Lyme disease. The efficacy data in Table 11 are specific to this “validated” patient subset, while the safety data below reflect the entire patient population for the 2 trials. Clinical data for evaluable subjects in the “validated” patient subset are shown in Table 11.

Table 11. Clinical Effectiveness of Cefuroxime Axetil Tablets Compared with Doxycycline in the Treatment of Early Lyme Disease

	Part I (1 Month after 20 Days of Treatment)^a		Part II (1 Year after 20 Days of Treatment)^b	
	Cefuroxime Axetil Tablets 500 mg Twice Daily (n = 125)	Doxycycline 100 mg 3 Times Daily (n = 108)	Cefuroxime Axetil Tablets 500 mg Twice Daily (n = 105c)	Doxycycline 100 mg 3 Times Daily (n = 83c)
Satisfactory clinical outcome	91%	93%	84%	87%
Clinical cure/success	72%	73%	73%	73%
Clinical improvement	19%	19%	10%	13%

^a 95% confidence interval around the satisfactory difference for Part I (-0.08, +0.05).

^b 95% confidence interval around the satisfactory difference for Part II (-0.13, +0.07).

^c n’s include subjects assessed as unsatisfactory clinical outcomes (failure + recurrence) in Part I (cefuroxime axetil - 11 [5 failure, 6 recurrence]; doxycycline - 8 [6 failure, 2 recurrence]).

^d Satisfactory clinical outcome includes cure + improvement (Part I) and success + improvement (Part II).

Cefuroxime axetil and doxycycline were effective in prevention of the development of sequelae of late Lyme disease.

While the incidence of drug-related gastrointestinal adverse reactions was similar in the

2 treatment groups (cefuroxime axetil - 13%; doxycycline - 11%), the incidence of drug-related diarrhea was higher in the cefuroxime axetil arm versus the doxycycline arm (11% versus 3%, respectively).

16 HOW SUPPLIED/STORAGE AND HANDLING

Product: 53002-2750

NDC: 53002-2750-2 20 TABLET, FILM COATED in a BOTTLE

17 PATIENT COUNSELING INFORMATION

Allergic Reactions

Inform patients that cefuroxime axetil is a cephalosporin that can cause allergic reactions in some individuals [*see Warnings and Precautions (5.1)*].

Clostridioides difficile-Associated Diarrhea

Inform patients that diarrhea is a common problem caused by antibacterials, and it usually ends when the antibacterial is discontinued. Sometimes after starting treatment with antibacterials, patients can develop watery and bloody stools (with or without stomach cramps and fever) even as late as 2 or more months after having taken their last dose of the antibacterial. If this occurs, advise patients to contact their physician as soon as possible.

Crushing Tablets

Instruct patients to swallow the tablet whole, without crushing the tablet. Patients who cannot swallow the tablet whole should receive the oral suspension.

Drug Resistance

Inform patients that antibacterial drugs, including cefuroxime axetil, should only be used to treat bacterial infections. They do not treat viral infections (e.g., the common cold). When cefuroxime axetil is prescribed to treat a bacterial infection, inform patients that although it is common to feel better early in the course of therapy, the medication should be taken exactly as directed. Skipping doses or not completing the full course of therapy may: (1) decrease the effectiveness of the immediate treatment, and (2) increase the likelihood that bacteria will develop resistance and will not be treatable by cefuroxime axetil or other antibacterial drugs in the future.



Alkem Laboratories Ltd.,

INDIA.

Distributed by:

Ascend Laboratories, LLC
Parsippany, NJ 07054
Revised: July, 2022
PT0996-09

Cefuroxime Axetil 250mg Tablets



CEFUROXIME AXETIL

cefuroxime axetil tablet, film coated

Product Information

Product Type	HUMAN PRESCRIPTION DRUG	Item Code (Source)	NDC:53002-2750(NDC:67877-215)
Route of Administration	ORAL		

Active Ingredient/Active Moiety

Ingredient Name	Basis of Strength	Strength
CEFUROXIME AXETIL (UNII: Z49QDT0J8Z) (CEFUROXIME - UNII:O1R9FJ93ED)	CEFUROXIME	250 mg

Inactive Ingredients

Ingredient Name	Strength
MICROCRYSTALLINE CELLULOSE (UNII: OP1R32D61U)	
CROSCARMELLOSE SODIUM (UNII: M28OL1HH48)	
SODIUM LAURYL SULFATE (UNII: 368GB5141J)	
SILICON DIOXIDE (UNII: ETJ7Z6XBU4)	
CALCIUM STEARATE (UNII: 776XM7047L)	
CALCIUM CARBONATE (UNII: H0G9379FGK)	
CROSPVIDONE (15 MPAS AT 5%) (UNII: 68401960MK)	
HYPROMELLOSE 2910 (6 MPAS) (UNII: 0WZ8WG20P6)	
TITANIUM DIOXIDE (UNII: 15FIX9V2JP)	
PROPYLENE GLYCOL (UNII: 6DC9Q167V3)	
FD&C BLUE NO. 1 (UNII: H3R47K3TBD)	

ALUMINUM OXIDE (UNII: LMI26O6933)

Product Characteristics

Color	BLUE	Score	no score
Shape	CAPSULE	Size	15mm
Flavor		Imprint Code	204
Contains			

Packaging

#	Item Code	Package Description	Marketing Start Date	Marketing End Date
1	NDC:53002-2750-2	20 in 1 BOTTLE; Type 0: Not a Combination Product	01/01/2019	

Marketing Information

Marketing Category	Application Number or Monograph Citation	Marketing Start Date	Marketing End Date
ANDA	ANDA065496	12/01/2010	

Labeler - RPK Pharmaceuticals, Inc. (147096275)

Establishment

Name	Address	ID/FEI	Business Operations
RPK Pharmaceuticals, Inc.		147096275	RELABEL(53002-2750)

Revised: 6/2023

RPK Pharmaceuticals, Inc.