

CEPHALEXIN- cephalexin capsule
REMEDYREPACK INC.

HIGHLIGHTS OF PRESCRIBING INFORMATION

These highlights do not include all the information needed to use CEPHALEXIN CAPSULES USP safely and effectively. See full prescribing information for CEPHALEXIN CAPSULES USP

CEPHALEXIN capsules USP, for oral use

Initial U.S. Approval: 1971

INDICATIONS AND USAGE

Cephalexin capsules USP is a cephalosporin antibacterial drug indicated for the treatment of the following infections caused by susceptible isolates of designated bacteria:

- Respiratory tract infection (1.1)
- Otitis media (1.2)
- Skin and skin structure infections (1.3)
- Bone infections (1.4)
- Genitourinary tract infections (1.5)

To reduce the development of drug-resistant bacteria and maintain the effectiveness of cephalexin capsules USP and other antibacterial drugs, cephalexin capsules USP should be used only to treat infections that are proven or strongly suspected to be caused by bacteria. (1.6)

DOSAGE AND ADMINISTRATION

Adults and patients at least 15 years of age	The usual dose is 250 mg every 6 hours, but a dose of 500 mg every 12 hours may be administered (2.1)
Pediatric patients (over 1 year of age)	<ul style="list-style-type: none">• Otitis media: 75 to 100 mg/kg in equally divided doses every 6 hours (2.2)• All other indications: 25 to 50 mg/kg given in equally divided doses (2.2)• In severe infections: 50 to 100 mg/kg may be administered in equally divided doses (2.2)

- Duration of therapy ranges from 7 to 14 days depending on the infection type and severity. (2)
- Dosage adjustment is required in patients with severe and end stage renal disease (ESRD) defined as creatinine clearance below 30 mL/min. (2.3)

DOSAGE FORMS AND STRENGTHS

Capsules: 250 mg and 500 mg (3)

CONTRAINDICATIONS

Patients with known hypersensitivity to cephalexin or other members of the cephalosporin class of antibacterial drugs. (4)

WARNINGS AND PRECAUTIONS

- Serious hypersensitivity (anaphylactic) reactions : Prior to use, inquire regarding history of hypersensitivity to beta-lactam antibacterial drugs. Discontinue the drug if signs or symptoms of an allergic reaction occur and institute supportive measures. (5.1)
- Clostridium difficile-associated diarrhea (CDAD) : Evaluate if diarrhea occurs. (5.2)
- Direct Coombs' Test Seroconversion : If anemia develops during or after cephalexin therapy, evaluate for drug-induced hemolytic anemia.(5.3)
- Seizure Potential : Use lower dose in patients with renal impairment. (5.4)

ADVERSE REACTIONS

The most common adverse reactions associated with cephalexin include diarrhea, nausea, vomiting, dyspepsia and abdominal pain. (6)

To report SUSPECTED ADVERSE REACTIONS, contact Lupin Pharmaceuticals, Inc. at 1-800-399-2561 or FDA at 1-800-FDA-1088 or www.fda.gov/medwatch.

DRUG INTERACTIONS

- Metformin: increased metformin concentrations. Monitor for hypoglycemia. (7.1)
- Probenecid- The renal excretion of cephalexin is inhibited by probenecid. Co-administration of probenecid with cephalexin is not recommended. (7.2)
- Administration of cephalexin may result in a false-positive reaction glucose in the urine. (7.3)

USE IN SPECIFIC POPULATIONS

- Renal Impairment: Monitor patients longer for toxicity and drug interactions due to delayed clearance. (8.6)

See 17 for PATIENT COUNSELING INFORMATION.

Revised: 10/2022

1 INDICATIONS AND USAGE

- 1.1 Respiratory Tract Infections
- 1.2 Otitis Media
- 1.3 Skin and Skin Structure Infections
- 1.4 Bone Infections
- 1.5 Genitourinary Tract Infections
- 1.6 Usage

2 DOSAGE AND ADMINISTRATION

- 2.1 Adults and Pediatric Patients at Least 15 Years of Age
- 2.2 Pediatric Patients (Over 1 year of Age)
- 2.3 Dosage Adjustments in Adult and Pediatric Patients at Least 15 Years of Age with Renal Impairment

3. DOSAGE FORMS AND STRENGTHS

4 CONTRAINDICATIONS

5 WARNINGS AND PRECAUTIONS

- 5.1 Hypersensitivity Reactions
- 5.2 Clostridium difficile-Associated Diarrhea
- 5.3 Direct Coombs' Test Seroconversion
- 5.4 Seizure Potential
- 5.5 Prolonged Prothrombin Time
- 5.6 Development of Drug-Resistant Bacteria

6 ADVERSE REACTIONS

- 6.1 Clinical Trials Experience

7 DRUG INTERACTIONS

- 7.1 Metformin
- 7.2 Probenecid
- 7.3 Interaction with Laboratory or Diagnostic Testing

8 USE IN SPECIFIC POPULATIONS

- 8.1 Pregnancy
- 8.2 Lactation
- 8.4 Pediatric Use
- 8.5 Geriatric Use
- 8.6 Renal Impairment

10 OVERDOSAGE

11 DESCRIPTION

12 CLINICAL PHARMACOLOGY

- 12.1 Mechanism of Action
- 12.3 Pharmacokinetics
- 12.4 Microbiology

13 NONCLINICAL TOXICOLOGY

- 13.1 Carcinogenesis, Mutagenesis, Impairment of Fertility

16 HOW SUPPLIED/STORAGE AND HANDLING

17 PATIENT COUNSELING INFORMATION

* Sections or subsections omitted from the full prescribing information are not listed.

FULL PRESCRIBING INFORMATION

1 INDICATIONS AND USAGE

1.1 Respiratory Tract Infections

Cephalexin capsules USP are indicated for the treatment of respiratory tract infections caused by susceptible isolates of *Streptococcus pneumoniae* and *Streptococcus pyogenes*.

1.2 Otitis Media

Cephalexin capsules USP are indicated for the treatment of otitis media caused by susceptible isolates of *Streptococcus pneumoniae*, *Haemophilus influenzae*, *Staphylococcus aureus*, *Streptococcus pyogenes*, and *Moraxella catarrhalis*.

1.3 Skin and Skin Structure Infections

Cephalexin capsules USP are indicated for the treatment of skin and skin structure infections caused by susceptible isolates of the following Gram-positive bacteria: *Staphylococcus aureus* and *Streptococcus pyogenes*.

1.4 Bone Infections

Cephalexin capsules USP are indicated for the treatment of bone infections caused by susceptible isolates of *Staphylococcus aureus* and *Proteus mirabilis*.

1.5 Genitourinary Tract Infections

Cephalexin capsules USP are indicated for the treatment of genitourinary tract infections, including acute prostatitis, caused by susceptible isolates of *Escherichia coli*, *Proteus mirabilis*, and *Klebsiella pneumoniae*.

1.6 Usage

To reduce the development of drug-resistant bacteria and maintain the effectiveness of cephalexin capsules USP and other antibacterial drugs, cephalexin capsules USP should be used only to treat infections that are proven or strongly suspected to be caused by susceptible bacteria. When culture and susceptibility information is available, this information should be considered in selecting or modifying antibacterial therapy. In the absence of such data, local epidemiology and susceptibility patterns may contribute to the empiric selection of therapy.

2 DOSAGE AND ADMINISTRATION

2.1 Adults and Pediatric Patients at Least 15 Years of Age

The usual dose of oral cephalexin capsules USP is 250 mg every 6 hours, but a dose of 500 mg every 12 hours may be administered. Treatment is administered for 7 to 14 days.

For more severe infections larger doses of oral cephalexin capsules USP may be needed, up to 4 grams daily in two to four equally divided doses.

2.2 Pediatric Patients (Over 1 year of Age)

The recommended total daily dose of oral cephalexin capsules USP for pediatric patients is 25 to 50 mg/kg given in equally divided doses for 7 to 14 days. In the treatment of β -hemolytic streptococcal infections, duration of at least 10 days is recommended. In severe infections, a total daily dose of 50 to 100 mg/kg may be administered in equally divided doses.

For the treatment of otitis media, the recommended daily dose is 75 to 100 mg/kg given in equally divided doses.

2.3 Dosage Adjustments in Adult and Pediatric Patients at Least 15 Years of Age with Renal Impairment

Administer the following dosing regimens for cephalexin capsules USP to patients with renal impairment [see **WARNINGS AND PRECAUTIONS (5.4)** and **USE IN SPECIFIC POPULATIONS (8.6)**].

Table1. Recommended Dose Regimen for Patients with Renal Impairment

Renal function	Dose regimen recommendation
Creatinine clearance \geq 60 mL/min	No dose adjustment
Creatinine clearance 30 to 59 mL/min	No dose adjustment; maximum daily dose should not exceed 1 g
Creatinine clearance 15 to 29 mL/min	250 mg, every 8 hours or every 12 hours
Creatinine clearance 5 to 14 mL/min not yet on dialysis*	250 mg, every 24 hours
Creatinine clearance 1 to 4 mL/min not yet on dialysis*	250 mg, every 48 hours or every 60 hours

* There is insufficient information to make dose adjustment recommendations in patients on hemodialysis

3. DOSAGE FORMS AND STRENGTHS

500 mg Capsules

A white to yellowish-white granular powder filled into size "0" capsules (light green and dark green) that are imprinted with "500" on the dark green cap, and "LUPIN" on the light green body in edible black ink.

4 CONTRAINDICATIONS

Cephalexin capsules are contraindicated in patients with known hypersensitivity to cephalexin or other members of the cephalosporin class of antibacterial drugs.

5 WARNINGS AND PRECAUTIONS

5.1 Hypersensitivity Reactions

Allergic reactions in the form of rash, urticaria, angioedema, anaphylaxis, erythema multiforme, Stevens-Johnson syndrome, or toxic epidermal necrolysis have been reported with the use of cephalexin. Before therapy with cephalexin capsules is instituted, inquire whether the patient has a history of hypersensitivity reactions to cephalexin, cephalosporins, penicillins, or other drugs. Cross-hypersensitivity among beta-lactam antibacterial drugs may occur in up to 10% of patients with a history of penicillin allergy.

If an allergic reaction to cephalexin occurs, discontinue the drug and institute appropriate treatment.

5.2 Clostridium difficile-Associated Diarrhea

Clostridium difficile-associated diarrhea (CDAD) has been reported with use of nearly all antibacterial agents, including cephalexin, and may range in severity from mild diarrhea to fatal colitis. Treatment with antibacterial agents alters the normal flora of the colon leading to overgrowth of *C. difficile*.

C. difficile produces toxins A and B, which contribute to the development of CDAD. Hypertoxin-producing strains of *C. difficile* cause increased morbidity and mortality, as these infections can be refractory to antimicrobial therapy and may require colectomy. CDAD must be considered in all patients who present with diarrhea following antibiotic use. Careful medical history is necessary since CDAD has been reported to occur over two months after the administration of antibacterial agents.

If CDAD is suspected or confirmed, ongoing antibiotic use not directed against *C. difficile* may need to be discontinued. Appropriate fluid and electrolyte management, protein supplementation, antibiotic treatment of *C. difficile*, and surgical evaluation should be instituted as clinically indicated.

5.3 Direct Coombs' Test Seroconversion

Positive direct Coombs' tests have been reported during treatment with the cephalosporin antibacterial drugs including cephalexin. Acute intravascular hemolysis induced by cephalexin therapy has been reported. If anemia develops during or after cephalexin therapy, perform a diagnostic work-up for drug-induced hemolytic anemia, discontinue cephalexin and institute appropriate therapy.

5.4 Seizure Potential

Several cephalosporins have been implicated in triggering seizures, particularly in patients with renal impairment when the dosage was not reduced. If seizures occur, discontinue cephalexin. Anticonvulsant therapy can be given if clinically indicated.

5.5 Prolonged Prothrombin Time

Cephalosporins may be associated with prolonged prothrombin time. Those at risk include patients with renal or hepatic impairment, or poor nutritional state, as well as patients receiving a protracted course of antibacterial therapy, and patients receiving anticoagulant therapy. Monitor prothrombin time in patients at risk and manage as indicated.

5.6 Development of Drug-Resistant Bacteria

Prescribing cephalexin capsules in the absence of a proven or strongly suspected bacterial infection is unlikely to provide benefit to the patient and increases the risk of the development of drug-resistant bacteria.

Prolonged use of cephalexin may result in the overgrowth of nonsusceptible organisms. Careful observation of the patient is essential. If superinfection occurs during therapy, appropriate measures should be taken.

6 ADVERSE REACTIONS

The following serious events are described in greater detail in the Warning and Precautions section:

- Hypersensitivity reactions [see *WARNING AND PRECAUTIONS (5.1)*]
- *Clostridium difficile* -associated diarrhea [see *WARNINGS AND PRECAUTIONS (5.2)*]
- Direct Coombs' Test Seroconversion [see *WARNINGS AND PRECAUTIONS (5.3)*]
- Seizure Potential [see *WARNINGS AND PRECAUTIONS (5.4)*]
- Effect on Prothrombin Activity [see *WARNINGS AND PRECAUTIONS (5.5)*]
- Development of Drug-Resistant Bacteria [see *WARNINGS AND PRECAUTIONS (5.6)*]

6.1 Clinical Trials Experience

Because clinical trials are conducted under widely varying conditions, adverse reaction rates observed in the clinical trials of a drug cannot be directly compared to rates in the clinical trials of another drug and may not reflect the rates observed in practice.

In clinical trials, the most frequent adverse reaction was diarrhea. Nausea and vomiting, dyspepsia, gastritis, and abdominal pain have also occurred. As with penicillins and other cephalosporins, transient hepatitis and cholestatic jaundice have been reported.

Other reactions have included hypersensitivity reactions, genital and anal pruritus, genital candidiasis, vaginitis and vaginal discharge, dizziness, fatigue, headache, agitation, confusion, hallucinations, arthralgia, arthritis, and joint disorder. Reversible interstitial nephritis has been reported. Eosinophilia, neutropenia, thrombocytopenia, hemolytic anemia, and slight elevations in aspartate transaminase (AST) and alanine transaminase (ALT) have been reported.

In addition to the adverse reactions listed above that have been observed in patients treated with cephalexin, the following adverse reactions and other altered laboratory tests have been reported for cephalosporin class antibacterial drugs:

Other Adverse Reactions

Fever, colitis, aplastic anemia, hemorrhage, renal dysfunction, and toxic nephropathy.

Altered Laboratory Tests

Prolonged prothrombin time, increased blood urea nitrogen (BUN), increased creatinine, elevated alkaline phosphatase, elevated bilirubin, elevated lactate dehydrogenase (LDH), pancytopenia, leukopenia, and agranulocytosis.

7 DRUG INTERACTIONS

7.1 Metformin

Administration of cephalexin with metformin results in increased plasma metformin concentrations and decreased renal clearance of metformin.

Careful patient monitoring and dose adjustment of metformin is recommended in patients concomitantly taking cephalexin and metformin [see *CLINICAL PHARMACOLOGY (12.3)*].

7.2 Probenecid

The renal excretion of cephalexin is inhibited by probenecid. Co-administration of probenecid with cephalexin capsules is not recommended.

7.3 Interaction with Laboratory or Diagnostic Testing

A false-positive reaction may occur when testing for the presence of glucose in the urine using Benedict's solution or Fehling's solution.

8 USE IN SPECIFIC POPULATIONS

8.1 Pregnancy

Risk Summary

Available data from published epidemiologic studies and pharmacovigilance case reports over several decades with cephalosporin use, including cephalexin use in pregnant women have not established drug-associated risks of major birth defects, miscarriage, or adverse maternal or fetal outcomes (*see Data*).

Animal reproduction studies with mice and rats using oral doses of cephalexin that are 0.6- and 1.2-times the maximum recommended human dose (MRHD) based on body surface area during organogenesis revealed no evidence of harm to the fetus (*see Data*).

The estimated background risk of major birth defects and miscarriage for the indicated population is unknown.

All pregnancies have a background risk of birth defect, loss, or other adverse outcomes. In the U.S. general population, the estimated background risk of major birth defects and miscarriage in clinically recognized pregnancies is 2% to 4% and 15% to 20%, respectively.

Data

Human Data:

While available studies cannot definitively establish the absence of risk, published data from epidemiologic studies and postmarketing case reports over several decades have not identified a consistent association with cephalosporin use, including cephalexin, during pregnancy, and major birth defects, miscarriage, or other adverse maternal or fetal outcomes. Available studies have methodologic limitations, including small sample size, retrospective data collection, and inconsistent comparator groups.

Animal Data:

In animal reproduction studies, pregnant mice and rats administered oral cephalexin doses of 250 or 500 mg/kg/day (approximately 0.6 and 1.2 times the MRHD) based on body surface area, respectively during the period of organogenesis showed no adverse effects on embryofetal development.

In a pre- and post-natal developmental toxicity study, pregnant rats that received oral doses of 250 or 500 mg/kg/day of cephalexin from Day 15 of pregnancy to litter Day 21 showed no adverse effects on parturition, litter size, or growth of offspring.

8.2 Lactation

Risk Summary

Data from a published clinical lactation study reports that cephalexin is present in human milk. The Relative Infant Dose (RID) is considered to be <1% of the maternal weight adjusted dose. There are no data on the effects of cephalexin on the breastfed child or on milk production.

The development of health benefits of breastfeeding should be considered along with the mother's clinical need for cephalexin and any potential adverse effects on the breastfed child from cephalexin or from the underlying maternal condition.

8.4 Pediatric Use

The safety and effectiveness of cephalexin capsules in pediatric patients was established in clinical trials for the dosages described in the dosage and administration section [*see DOSAGE AND ADMINISTRATION (2.2)*]

8.5 Geriatric Use

Of the 701 subjects in 3 published clinical studies of cephalexin, 433 (62%) were 65 and over. No overall differences in safety or effectiveness were observed between these subjects and younger subjects, and other reported clinical experience has not identified differences in responses between the elderly and younger patients.

This drug is substantially excreted by the kidney, and the risk of toxic reactions to this

drug may be greater in patients with impaired renal function. Because elderly patients are more likely to have decreased renal function, care should be taken in dose selection [see **WARNINGS AND PRECAUTIONS (5.4)**].

8.6 Renal Impairment

Cephalexin capsules should be administered with careful monitoring in the presence of renal impairment (creatinine clearance < 30 mL/min, with or without dialysis). Under such conditions, careful clinical observation and laboratory studies renal function monitoring should be conducted because safe dosage may be lower than that usually recommended [see **DOSAGE AND ADMINISTRATION (2.3)**]. Monitor patients longer for toxicity and drug interactions due to delayed clearance.

10 OVERDOSAGE

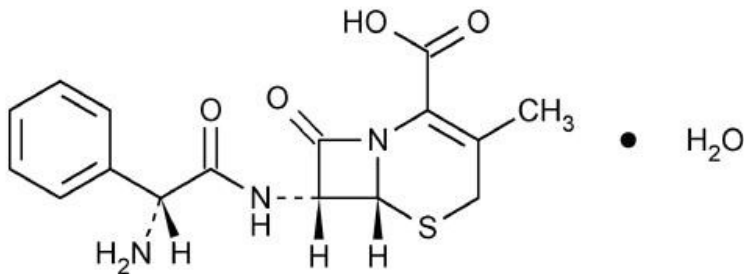
Symptoms of oral overdose may include nausea, vomiting, epigastric distress, diarrhea, and hematuria. In the event of an overdose, institute general supportive measures.

Forced diuresis, peritoneal dialysis, hemodialysis, or charcoal hemoperfusion have not been established as beneficial for an overdose of cephalexin.

11 DESCRIPTION

Cephalexin capsules USP is a semisynthetic cephalosporin antibacterial drug intended for oral administration. It is 7- (D-a-Amino-a-phenylacetamido)-3-methyl-3-cephem-4-carboxylic acid monohydrate. Cephalexin has the molecular formula $C_{16}H_{17}N_3O_4S \cdot H_2O$ and the molecular weight is 365.41.

Cephalexin has the following structural formula:



Each capsule contains cephalexin USP equivalent to 250 mg, or 500 mg of anhydrous cephalexin. The capsules also contain the following inactive ingredients D&C Yellow 10, FD&C Blue 1, FD&C Green 3, FD&C Yellow 6, ferric oxide black, gelatin, magnesium stearate, microcrystalline cellulose, potassium hydroxide, propylene glycol, shellac and titanium dioxide.

12 CLINICAL PHARMACOLOGY

12.1 Mechanism of Action

Cephalexin is a cephalosporin antibacterial drug [see **Microbiology (12.4)**].

12.3 Pharmacokinetics

Absorption

Cephalexin is acid stable and may be given without regard to meals. Following doses of 250 mg, 500 mg, and 1 g, average peak serum levels of approximately 9, 18, and 32 mcg/mL, respectively, were obtained at 1 hour. Serum levels were detectable 6 hours after administration (at a level of detection of 0.2 mcg/mL).

Distribution

Cephalexin is approximately 10% to 15% bound to plasma proteins.

Excretion

Cephalexin is excreted in the urine by glomerular filtration and tubular secretion. Studies showed that over 90% of the drug was excreted unchanged in the urine within 8 hours. During this period, peak urine concentrations following the 250 mg, 500 mg, and 1 g doses were approximately 1000, 2200, and 5000 mcg/mL respectively.

Drug Interactions

In healthy subjects given single 500 mg doses of cephalexin and metformin, plasma metformin mean C_{max} and AUC increased by an average of 34% and 24%, respectively, and metformin mean renal clearance decreased by 14%. No information is available about the interaction of cephalexin and metformin following multiple doses of either drug.

12.4 Microbiology

Mechanism of Action

Cephalexin is a bactericidal agent that acts by the inhibition of bacterial cell-wall synthesis.

Resistance

Methicillin-resistant staphylococci and most isolates of enterococci are resistant to cephalexin. Cephalexin is not active against most isolates of *Enterobacter spp.*, *Morganella morganii*, and *Proteus vulgaris*. Cephalexin has no activity against *Pseudomonas spp.*, or *Acinetobacter calcoaceticus*. Penicillin-resistant *Streptococcus pneumoniae* is usually cross-resistant to beta-lactam antibacterial drugs.

Antimicrobial Activity

Cephalexin has been shown to be active against most isolates of the following bacteria both *in vitro* and in clinical infections [see *INDICATIONS AND USAGE (1)*].

Gram-Positive Bacteria:

Staphylococcus aureus (methicillin-susceptible isolates only)

Streptococcus pneumoniae (penicillin-susceptible isolates)

Gram-Negative Bacteria:

Escherichia coli

Haemophilus influenzae

Klebsiella pneumoniae

Moraxella catarrhalis

Proteus mirabilis

Susceptibility Testing

For specific information regarding susceptibility test interpretive criteria and associated test methods and quality control standards recognized by FDA for this drug, please see: <https://www.fda.gov/STIC>.

13 NONCLINICAL TOXICOLOGY

13.1 Carcinogenesis, Mutagenesis, Impairment of Fertility

Lifetime studies in animals have not been performed to evaluate the carcinogenic potential of cephalexin. Tests to determine the mutagenic potential of cephalexin have not been performed. In male and female rats, fertility and reproductive performance were not affected by cephalexin oral doses up to 1.5 times the highest recommended human dose based upon body surface area.

16 HOW SUPPLIED/STORAGE AND HANDLING

Cephalexin capsules USP, are supplied as follows:

500 mg Capsules,

NDC: 70518-3448-00

NDC: 70518-3448-01

NDC: 70518-3448-02

NDC: 70518-3448-03

NDC: 70518-3448-04

NDC: 70518-3448-05

NDC: 70518-3448-06

NDC: 70518-3448-07

NDC: 70518-3448-08

NDC: 70518-3448-09

PACKAGING: 100 in 1 BOX

PACKAGING: 1 in 1 POUCH

PACKAGING: 30 in 1 BLISTER PACK

PACKAGING: 20 in 1 BOTTLE PLASTIC

PACKAGING; 21 in 1 BOTTLE PLASTIC

PACKAGING: 30 in 1 BOTTLE PLASTIC

PACKAGING: 14 in 1 BOTTLE PLASTIC

PACKAGING: 28 in 1 BOTTLE PLASTIC

PACKAGING: 40 in 1 BOTTLE PLASTIC

PACKAGING: 28 in 1 BOTTLE PLASTIC

Cephalexin capsules USP should be stored at 20° to 25°C (68° to 77°F) [See USP Controlled Room Temperature].

Dispense in a tight, light-resistant container.

Repackaged and Distributed By:

Remedy Repack, Inc.

625 Kolter Dr. Suite #4 Indiana, PA 1-724-465-8762

17 PATIENT COUNSELING INFORMATION

Allergic Reactions

Advise patients that allergic reactions, including serious allergic reactions, could occur and that serious reactions require immediate treatment. Ask the patient about any previous hypersensitivity reactions to cephalexin capsules, other beta-lactams (including cephalosporins) or other allergens (5.1)

Diarrhea

Advise patients that diarrhea is a common problem caused by antibacterial drugs and usually resolves when the drug is discontinued. Sometimes, frequent watery or bloody diarrhea may occur and may be a sign of a more serious intestinal infection. If severe watery or bloody diarrhea develops, advise patients to contact their healthcare provider.

Antibacterial Resistance

Counsel patients that antibacterial drugs including cephalexin capsules, should only be used to treat bacterial infections. They do not treat viral infections (e.g., the common cold). When cephalexin capsules are prescribed to treat a bacterial infection, tell patients that although it is common to feel better early in the course of therapy, the medication should be taken exactly as directed. Skipping doses or not completing the full course of therapy may (1) decrease the effectiveness of the immediate treatment and (2) increase the likelihood that bacteria will develop resistance and will not be treatable by cephalexin capsules or other antibacterial drugs in the future

Repackaged By / Distributed By: RemedyRepack Inc.

625 Kolter Drive, Indiana, PA 15701

(724) 465-8762

DRUG: Cephalexin

GENERIC: Cephalexin

DOSAGE: CAPSULE

ADMINISTRATION: ORAL

NDC: 70518-3448-0

NDC: 70518-3448-1

NDC: 70518-3448-2

NDC: 70518-3448-3

NDC: 70518-3448-4

NDC: 70518-3448-5

NDC: 70518-3448-6

NDC: 70518-3448-7

NDC: 70518-3448-8

NDC: 70518-3448-9

COLOR: green

SHAPE: CAPSULE

SCORE: No score

SIZE: 22 mm

IMPRINT: 500;LUPIN

PACKAGING: 1 in 1 POUCH

OUTER PACKAGING: 100 in 1 BOX

PACKAGING: 30 in 1 BLISTER PACK

PACKAGING: 20 in 1 BOTTLE PLASTIC

PACKAGING: 21 in 1 BOTTLE PLASTIC

PACKAGING: 30 in 1 BOTTLE PLASTIC

PACKAGING: 14 in 1 BOTTLE PLASTIC

PACKAGING: 28 in 1 BOTTLE PLASTIC

PACKAGING: 40 in 1 BOTTLE PLASTIC

PACKAGING: 28 in 1 BOTTLE PLASTIC

ACTIVE INGREDIENT(S):

- CEPHALEXIN 500mg in 1

INACTIVE INGREDIENT(S):

- D&C YELLOW NO. 10
- FD&C BLUE NO. 1
- FD&C GREEN NO. 3
- FD&C YELLOW NO. 6
- GELATIN
- CELLULOSE, MICROCRYSTALLINE
- SHELLAC
- POTASSIUM HYDROXIDE
- MAGNESIUM STEARATE
- PROPYLENE GLYCOL
- TITANIUM DIOXIDE
- FERROSO-FERRIC OXIDE

Cephalexin

500 mg

Capsule

QTY: 100 Per Box



RX ONLY

NDC #: 70518-3448-00

Expires:

LOT #:

Source NDC: 68180-0122-01

MFG: Lupin Pharma, Baltimore, MD 21202

Keep this and all medication out of the reach of children



Directions For Use: See Package Insert

Store at 20-25°C (68-77°F); excursions permitted to 15-30°C (59-86°F) [See USP]

Repackaged by: RemedyRepack Inc., Indiana, PA 15701, 724.465.8762

Cephalexin

500 mg

Capsule

QTY: 1 Capsule



RX ONLY

NDC #: 70518-3448-01

Expires:

LOT #:

Source NDC: 68180-0122-01

MFG: Lupin Pharma, Baltimore, MD 21202

Keep this and all medication out of the reach of children



Directions For Use: See Package Insert

Store at 20-25°C (68-77°F); excursions permitted to 15-30°C (59-86°F) [See USP]

Repackaged by: RemedyRepack Inc., Indiana, PA 15701, 724.465.8762

Cephalexin

500 mg

Capsule

QTY: 30 Capsules



RX ONLY

NDC #: 70518-3448-02

Expires:

LOT #:

Source NDC: 68180-0122-02

MFG: Lupin Pharma, Baltimore, MD 21202

Keep this and all medication out of the reach of children



Directions For Use: See Package Insert

Store at 20-25°C (68-77°F); excursions permitted to 15-30°C (59-86°F) [See USP]

Repackaged by: RemedyRepack Inc., Indiana, PA 15701, 724.465.8762

Cephalexin

500 mg

Capsule

QTY: 20 Capsules



RX ONLY

NDC #: 70518-3448-03

Expires:

LOT #:

Source NDC: 68180-0122-02

MFG: Lupin Pharma, Baltimore, MD 21202

Keep this and all medication out of the reach of children



Directions For Use: See Package Insert

Store at 20-25°C (68-77°F); excursions permitted to 15-30°C (59-86°F) [See USP]

Repackaged by: RemedyRepack Inc., Indiana, PA 15701, 724.465.8762

Cephalexin

500 mg

Capsule

QTY: 21 Capsules



RX ONLY

NDC #: 70518-3448-04

Expires:

LOT #:

Source NDC: 68180-0122-02

MFG: Lupin Pharma, Baltimore, MD 21202

Keep this and all medication out of the reach of children



Directions For Use: See Package Insert

Store at 20-25°C (68-77°F); excursions permitted to 15-30°C (59-86°F) [See USP]

Repackaged by: RemedyRepack Inc., Indiana, PA 15701, 724.465.8762

Cephalexin

500 mg

Capsule

QTY: 30 Capsules



RX ONLY

NDC #: 70518-3448-05

Expires:

LOT #:

Source NDC: 68180-0122-02

MFG: Lupin Pharma, Baltimore, MD 21202

Keep this and all medication out of the reach of children



Directions For Use: See Package Insert

Store at 20-25°C (68-77°F); excursions permitted to 15-30°C (59-86°F) [See USP]

Repackaged by: RemedyRepack Inc., Indiana, PA 15701, 724.465.8762

Cephalexin

500 mg

Capsule

QTY: 14 Capsules



RX ONLY

NDC #: 70518-3448-06

Expires:

LOT #:

Source NDC: 68180-0122-02

MFG: Lupin Pharma, Baltimore, MD 21202

Keep this and all medication out of the reach of children



Directions For Use: See Package Insert

Store at 20-25°C (68-77°F); excursions permitted to 15-30°C (59-86°F) [See USP]

Repackaged by: RemedyRepack Inc., Indiana, PA 15701, 724.465.8762

Cephalexin

500 mg

Capsule

QTY: 28 Capsules



RX ONLY

NDC #: 70518-3448-07

Expires:

LOT #:

Source NDC: 68180-0122-02

MFG: Lupin Pharma, Baltimore, MD 21202

Keep this and all medication out of the reach of children



Directions For Use: See Package Insert

Store at 20-25°C (68-77°F); excursions permitted to 15-30°C (59-86°F) [See USP]

Repackaged by: RemedyRepack Inc., Indiana, PA 15701, 724.465.8762

Cephalexin

500 mg

Capsule

QTY: 40 Capsules



RX ONLY

NDC #: 70518-3448-08

Expires:

LOT #:

Source NDC: 68180-0122-01

MFG: Lupin Pharma, Baltimore, MD 21202

Keep this and all medication out of the reach of children



Directions For Use: See Package Insert

Store at 20-25°C (68-77°F); excursions permitted to 15-30°C (59-86°F) [See USP]

Repackaged by: RemedyRepack Inc., Indiana, PA 15701, 724.465.8762

Cephalexin

500 mg

Capsule

QTY: 28 Capsules



RX ONLY

NDC #: 70518-3448-09

Expires:

LOT #:

Source NDC: 68180-0122-01

MFG: Lupin Pharma, Baltimore, MD 21202

Keep this and all medication out of the reach of children



WARNING: CAUTION: Do not use with alcohol or nonprescribed drugs without consulting the provider.

Directions For Use: See Package Insert

Store at 20-25°C (68-77°F); excursions permitted to 15-30°C (59-86°F) [See USP]

Repackaged by: RemedyRepack Inc., Indiana, PA 15701, 724.465.8762

CEPHALEXIN

cephalexin capsule

Product Information

Product Type	HUMAN PRESCRIPTION DRUG	Item Code (Source)	NDC:70518-3448(NDC:68180-122)
Route of Administration	ORAL		

Active Ingredient/Active Moiety

Ingredient Name	Basis of Strength	Strength
CEPHALEXIN (UNII: OBN7UDS42Y) (CEPHALEXIN ANHYDROUS - UNII:5SFF1W6677)	CEPHALEXIN ANHYDROUS	500 mg

Inactive Ingredients

Ingredient Name	Strength
D&C YELLOW NO. 10 (UNII: 35SW5USQ3G)	
FD&C BLUE NO. 1 (UNII: H3R47K3TBD)	
FD&C GREEN NO. 3 (UNII: 3P3ONR6O1S)	
FD&C YELLOW NO. 6 (UNII: H77VEI93A8)	
GELATIN (UNII: 2G86QN327L)	
CELLULOSE, MICROCRYSTALLINE (UNII: OP1R32D61U)	
SHELLAC (UNII: 46N107B71O)	
POTASSIUM HYDROXIDE (UNII: WZ H3C48M4T)	
MAGNESIUM STEARATE (UNII: 70097M6130)	
PROPYLENE GLYCOL (UNII: 6DC9Q167V3)	
TITANIUM DIOXIDE (UNII: 15FIX9V2JP)	
FERROSFERRIC OXIDE (UNII: XM0M87F357)	

Product Characteristics				
Color	green (Light Green Body and Dark Green Cap)	Score	no score	
Shape	CAPSULE (Capsule)	Size	22mm	
Flavor		Imprint Code	500;LUPIN	
Contains				
Packaging				
#	Item Code	Package Description	Marketing Start Date	Marketing End Date
1	NDC:70518-3448-0	100 in 1 BOX	07/21/2021	
1	NDC:70518-3448-1	1 in 1 POUCH; Type 0: Not a Combination Product		
2	NDC:70518-3448-2	30 in 1 BLISTER PACK; Type 0: Not a Combination Product	08/11/2022	
3	NDC:70518-3448-3	20 in 1 BOTTLE, PLASTIC; Type 0: Not a Combination Product	12/14/2022	
4	NDC:70518-3448-4	21 in 1 BOTTLE, PLASTIC; Type 0: Not a Combination Product	12/14/2022	
5	NDC:70518-3448-5	30 in 1 BOTTLE, PLASTIC; Type 0: Not a Combination Product	12/28/2022	
6	NDC:70518-3448-6	14 in 1 BOTTLE, PLASTIC; Type 0: Not a Combination Product	04/02/2023	
7	NDC:70518-3448-7	28 in 1 BOTTLE, PLASTIC; Type 0: Not a Combination Product	04/19/2023	
8	NDC:70518-3448-8	40 in 1 BOTTLE, PLASTIC; Type 0: Not a Combination Product	05/30/2023	
9	NDC:70518-3448-9	28 in 1 BOTTLE, PLASTIC; Type 0: Not a Combination Product	05/30/2023	
Marketing Information				
Marketing Category	Application Number or Monograph Citation	Marketing Start Date	Marketing End Date	
ANDA	ANDA065229	07/21/2021		

Labeler - REMEDYREPACK INC. (829572556)

Revised: 3/2024

REMEDYREPACK INC.