

**DULCOLAX CHEWY FRUIT BITES CHERRY BERRY- magnesium hydroxide tablet,
chewable
Chattem, Inc.**

Dulcolax Chewy Fruit Bites- Cherry Berry

Dulcolax Chewy Fruit Bites Saline Laxative
Drug Facts

Active ingredient (in each chew)

Magnesium hydroxide USP 600 mg

Purpose

Saline laxative

Use

- for relief of occasional constipation (irregularity)
- this product generally produces bowel movement in ½ to 6 hours

Warnings

Ask a doctor before use if you have

- kidney disease
- a magnesium-restricted diet
- stomach pain, nausea or vomiting
- noticed a sudden change in bowel habits that lasts over 2 weeks

Ask a doctor or pharmacist before use if you are

taking a prescription drug. This product may interact with certain prescription drugs.

Stop use and ask a doctor if

- you have rectal bleeding or fail to have a bowel movement after using this product. These could be signs of a serious condition.
- you need to use a laxative for more than 1 week.

If pregnant or breast-feeding,

ask a health professional before use.

Keep out of reach of children.

In case of overdose, get medical help or contact a Poison Control Center right away.

Directions

- drink a full glass (8 oz) of liquid with each dose
- dose may be taken as a single daily dose or in divided doses
- do not exceed the maximum recommended daily dose in a 24-hour period

adults and children 12 years and over	4 chews (Up to 8 chews)
children 6 to under 12 years	2 chews (Up to 4 chews)
children under 6 years	ask a doctor

Other information

- each chew contains: **magnesium 250 mg, sodium 1 mg**
- contains FD&C yellow no. 5 (tartrazine) as a color additive
- contains FD&C yellow no. 6
- store at 20°-25°C (68°-77°F)

Inactive ingredients

ammonium hydroxide, carmine, carnauba wax, corn syrup, ethanol, ethyl acetate, FD&C blue no. 1, FD&C blue no. 2, FD&C red no. 40, FD&C red no. 40 aluminum lake, FD&C yellow no. 5, FD&C yellow no. 5 aluminum lake, FD&C yellow no. 6, gum arabic, hydrogenated coconut oil, isopropanol, lecithin (soy), maltodextrin, methylparaben, natural and artificial flavors, n-butanol, phosphoric acid, propylene glycol, propylparaben, shellac, sodium benzoate, sorbitol, sucrose, titanium dioxide, water, white beeswax

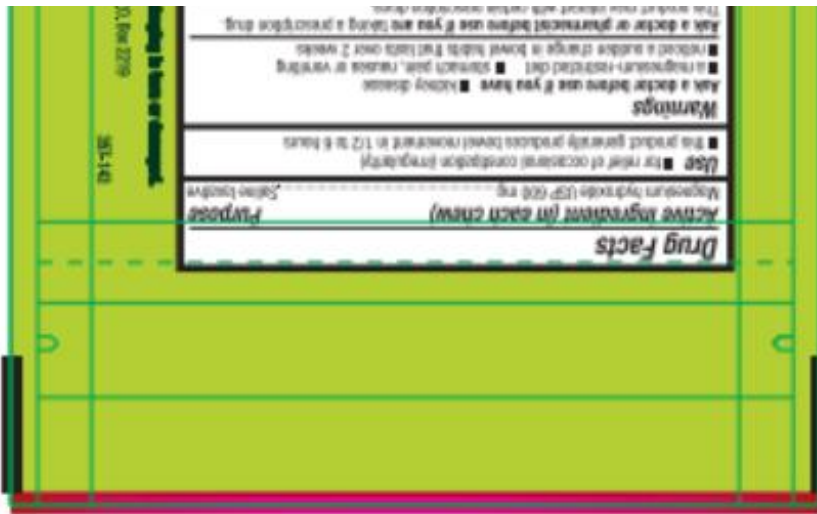
Questions?

Call **1-866-844-2798** or visit **www.Dulcolax.com**

PRINCIPAL DISPLAY PANEL

Dulcolax
Chewy fruit bites
12 Chewable bites
cherry berry





PRINCIPAL DISPLAY PANEL

Dulcolax
 Chewy fruit bites
 30 Chewable bites
 cherry berry



<p>Drug Facts (continued)</p> <p>Ask a doctor or pharmacist before use if you are taking a prescription drug. This product may interact with certain prescription drugs.</p> <p>Stop use and ask a doctor if • you have rectal bleeding or fail to have a bowel movement after using this product. These could be signs of a serious condition. • you need to use a laxative for more than 1 week.</p> <p>If pregnant or breast-feeding, ask a health professional before use. Keep out of reach of children. In case of overdose, get medical help or contact a Poison Control Center right away.</p> <p>Directions</p> <ul style="list-style-type: none"> • drink a full glass (8 oz) of liquid with each dose • dose may be taken as a single daily dose or in divided doses • do not exceed the maximum recommended daily dose in a 24 hour period <table border="1"> <tr> <td>adults and children 12 years and over</td> <td>4 chews (Up to 8 chews)</td> </tr> <tr> <td>children 6 to under 12 years</td> <td>2 chews (Up to 4 chews)</td> </tr> <tr> <td>children under 6 years</td> <td>ask a doctor</td> </tr> </table>	adults and children 12 years and over	4 chews (Up to 8 chews)	children 6 to under 12 years	2 chews (Up to 4 chews)	children under 6 years	ask a doctor	<p>Drug Facts (continued)</p> <p>Other information</p> <ul style="list-style-type: none"> • each chew contains: magnesium 250 mg, sodium 1 mg • contains FD&C yellow no. 5 (tartrazine) as a color additive • contains FD&C yellow no. 6 • store at 20°-25°C (68°-77°F) <p>Inactive ingredients</p> <p>ammonium hydroxide, carmine, carnauba wax, corn syrup, ethanol, ethyl acetate, FD&C blue no. 1, FD&C blue no. 2, FD&C red no. 40, FD&C red no. 40 aluminum lake, FD&C yellow no. 5, FD&C yellow no. 5 aluminum lake, FD&C yellow no. 6, gum arabic, hydrogenated coconut oil, isopropanol, lecithin (soy), maltodextrin, methylparaben, natural and artificial flavors, n-butanol, phosphoric acid, propylene glycol, propylparaben, shellac, sodium benzoate, sorbitol, sucrose, titanium dioxide, water, white beeswax</p> <p>Questions? Call 1-866-844-2798 or visit www.Dulcolax.com</p>
adults and children 12 years and over	4 chews (Up to 8 chews)						
children 6 to under 12 years	2 chews (Up to 4 chews)						
children under 6 years	ask a doctor						

Dulcolax[®]
Magnesium Hydroxide 600 mg Saline Laxative

**Chewy
fruit bites**

- Fast, gentle relief in as little as 30 minutes
- Works naturally with the water in your body to relieve occasional constipation in a great-tasting chewy bite
- Also available in Great-Tasting Assorted Fruit!

Dulcolax offers the same fast, gentle relief in a variety of products

- Dulcolax Soft Chews in Mixed Berry & Kids Watermelon for ages 4+
- Dulcolax Mint and Cherry Liquid Laxatives for ages 2+

DULCOLAX CHEWY FRUIT BITES CHERRY BERRY

magnesium hydroxide tablet, chewable

Product Information

Product Type	HUMAN OTC DRUG	Item Code (Source)	NDC:41167-0257
Route of Administration	ORAL		

Active Ingredient/Active Moiety

Ingredient Name	Basis of Strength	Strength
MAGNESIUM HYDROXIDE (UNII: NBZ3QY004S) (MAGNESIUM CATION - UNII:T6V3LHY838)	MAGNESIUM HYDROXIDE	600 mg

Inactive Ingredients

Ingredient Name	Strength
AMMONIA (UNII: 5138Q19F1X)	

CARMINIC ACID (UNII: CID8Z8N95N)
CARNAUBA WAX (UNII: R12CBM0EIZ)
CORN SYRUP (UNII: 9G5L16BK6N)
ALCOHOL (UNII: 3K9958V90M)
ETHYL ACETATE (UNII: 7684508NMZ)
FD&C BLUE NO. 1 (UNII: H3R47K3TBD)
FD&C BLUE NO. 2 (UNII: L06K8R7DQK)
FD&C RED NO. 40 (UNII: WZB9127XOA)
ACACIA (UNII: 5C5403N26O)
FD&C YELLOW NO. 5 (UNII: I753WB2F1M)
FD&C YELLOW NO. 5 ALUMINUM LAKE (UNII: JQ6BLH9FR7)
FD&C YELLOW NO. 6 (UNII: H77VEI93A8)
HYDROGENATED COCONUT OIL (UNII: JY81OXM1OM)
ISOPROPYL ALCOHOL (UNII: ND2M416302)
LECITHIN, SOYBEAN (UNII: 1DI56QDM62)
MALTODEXTRIN (UNII: 7CVR7L4A2D)
METHYLPARABEN (UNII: A2I8C7HI9T)
BUTYL ALCOHOL (UNII: 8PJ61P6TS3)
PHOSPHORIC ACID (UNII: E4GA8884NN)
PROPYLENE GLYCOL (UNII: 6DC9Q167V3)
PROPYLPARABEN (UNII: Z8IX2SC1OH)
SHELLAC (UNII: 46N107B71O)
SODIUM BENZOATE (UNII: OJ245FE5EU)
SORBITOL (UNII: 506T60A25R)
SUCROSE (UNII: C151H8M554)
TITANIUM DIOXIDE (UNII: 15FIX9V2JP)
WATER (UNII: 059QF0KO0R)
WHITE WAX (UNII: 7G1J5DA97F)

Product Characteristics

Color	red (bright red, dark red, pink)	Score	no score
Shape	ROUND (Ellipsoid)	Size	13mm
Flavor	BERRY (Cherry, Raspberry, Strawberry)	Imprint Code	D
Contains			

Packaging

#	Item Code	Package Description	Marketing Start Date	Marketing End Date
1	NDC:41167-0257-1	12 in 1 BAG; Type 0: Not a Combination Product	06/06/2022	
2	NDC:41167-0257-0	30 in 1 BOTTLE, PLASTIC; Type 0: Not a Combination Product	06/06/2022	

Marketing Information

Marketing Category	Application Number or Monograph Citation	Marketing Start Date	Marketing End Date
OTC Monograph Drug	505G(a)(3)	06/06/2022	

Labeler - Chattem, Inc. (003336013)

Revised: 11/2023

Chattem, Inc.