

GUNA PAIN MANAGEMENT - achillea millefolium whole - bellis perennis whole - matricaria chamomilla whole - toxicodendron pubescens whole - ruta graveolens flowering top - comfrey root - apis mellifera - bryonia alba root - histamine hydrochloride - hypericum perforatum - kalmia latifolia leaf - arnica montana whole - pork liver - solution/ drops

Guna spa

Disclaimer: This homeopathic product has not been evaluated by the Food and Drug Administration for safety or efficacy. FDA is not aware of scientific evidence to support homeopathy as effective.

GUNA PAIN MANAGEMENT

Inactive ingredient: Ethyl alcohol 30%.

QUESTIONS

Questions?

info@gunainc.com

Tel. (484) 223-3500

WARNINGS

Keep out of reach of children.

Take 15 minutes before meals.

DIRECTIONS

Take 15 minutes before meals.

Adults and children twelve years and older: 20 drops in a little water, 2 times per day

Children between 12 years and 6 years of age: 10 drops in a little water, 2 times per day

Children under 6 years: consult a physician

PREGNANCY

If pregnant or breast-feeding ask a health care profesional before use.

WARNINGS

- **Stop use and ask doctor** if symptoms worsen or persist more than 5 days.
- **If pregnant or breast-feeding** ask a health care professional before use.
- **Keep out** of reach of children.
- In case of accidental overdose, seek professional assistance or contact a poison control center immediately
- Contains ethyl alcohol 30%

ACTIVE INGREDIENTS/PURPOSE

Millefolium 2X Relieves pain

Bellis perennis 2X Relieves muscle soreness, sprains

Apis mellifica 30X Helps reduce swelling

Bryonia 6X Relieves muscle and joint pain

Chamomilla 2X Relieves inflammation

Histaminum hydroc. 12X Relieves burning, redness

Hepar suis 6X Relieves pain

Hypericum perf. 3X Relieves pain

Kalmia latifolia 6X Relieves pain

Rhus tox 8X Relieves pain

Ruta graveolens 4X Relieves pain

Symphytum officinale 6X Relieves pain

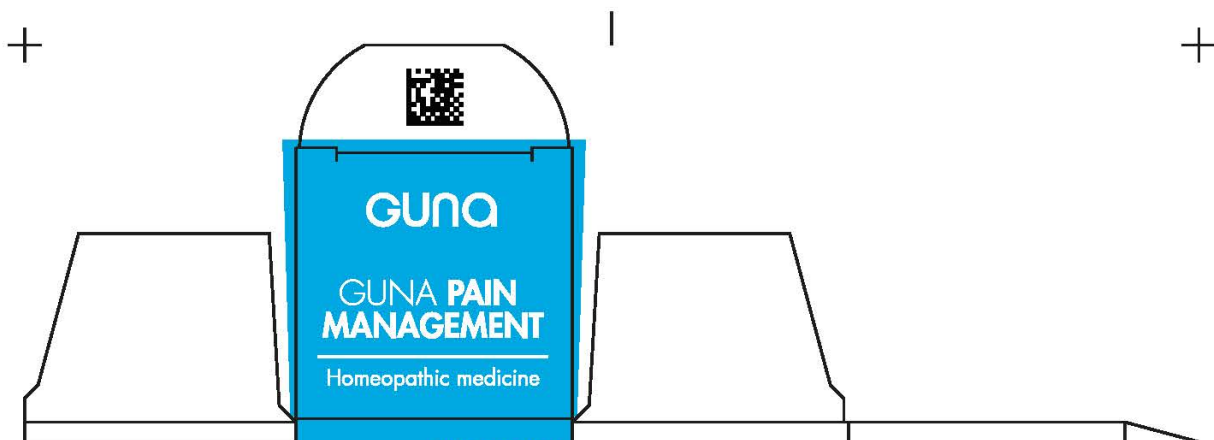
Arnica montana 3X Relieves inflammation

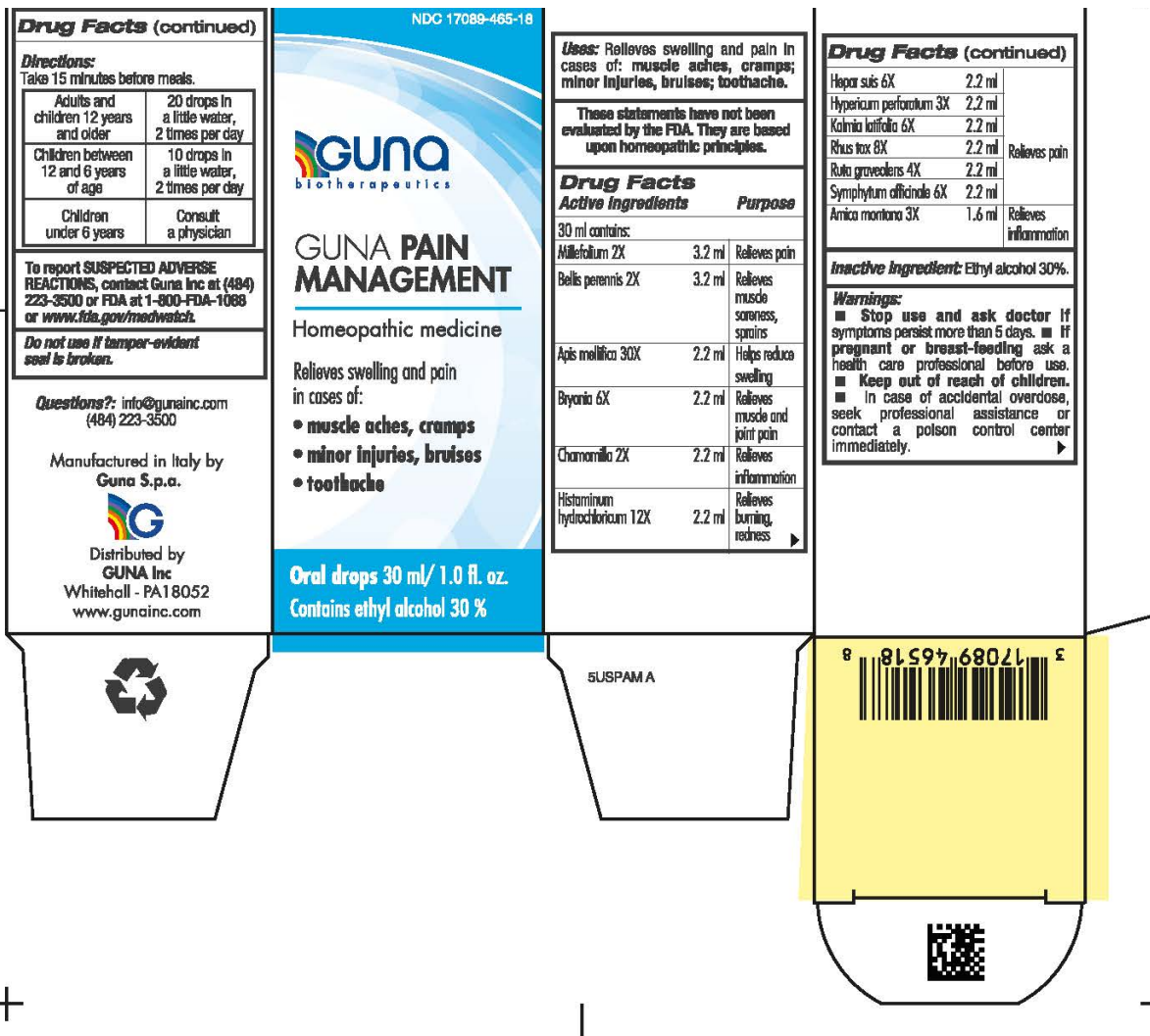
USES

Relieves swelling and pain in cases of:

- **muscle aches, cramps**
- **minor injuries, bruises**
- **toothache**

PRINCIPAL DISPLAY PANEL





GUNA PAIN MANAGEMENT

achillea millefolium whole - bellis perennis whole - matricaria chamomilla whole - toxicodendron pubescens whole - ruta graveolens flowering top - comfrey root - apis mellifera - bryonia alba root - histamine hydrochloride - hypericum perforatum - kalmia latifolia leaf - arnica montana whole - pork liver - solution/ drops

Product Information

Product Type	HUMAN OTC DRUG	Item Code (Source)	NDC:17089-465
Route of Administration	ORAL		

Active Ingredient/Active Moiety

Ingredient Name	Basis of Strength	Strength
BRYONIA ALBA ROOT (UNII: T7J046YI2B) (BRYONIA ALBA ROOT - UNII:T7J046YI2B)	BRYONIA ALBA ROOT	6 [hp_X] in 30 mL
HISTAMINE DIHYDROCHLORIDE (UNII: 3POA0Q644U) (HISTAMINE - UNII:820484N8I3)	HISTAMINE DIHYDROCHLORIDE	12 [hp_X] in 30 mL
HYPERICUM PERFORATUM (UNII: XK4IUX8MNB) (HYPERICUM PERFORATUM - UNII:XK4IUX8MNB)	HYPERICUM PERFORATUM	3 [hp_X] in 30 mL
ARNICA MONTANA WHOLE (UNII: O80TY208ZW) (ARNICA MONTANA WHOLE - UNII:O80TY208ZW)	ARNICA MONTANA WHOLE	3 [hp_X] in 30 mL

PORK LIVER (UNII: 6EC706HI7F) (PORK LIVER - UNII:6EC706HI7F)	PORK LIVER	6 [hp_X] in 30 mL
BELLIS PERENNIS WHOLE (UNII: 2HU33I03UY) (BELLIS PERENNIS WHOLE - UNII:2HU33I03UY)	BELLIS PERENNIS WHOLE	2 [hp_X] in 30 mL
MATRICARIA CHAMOMILLA WHOLE (UNII: G0R4UBI2ZZ) (MATRICARIA CHAMOMILLA WHOLE - UNII:G0R4UBI2ZZ)	MATRICARIA CHAMOMILLA WHOLE	2 [hp_X] in 30 mL
TOXICODENDRON PUBESCENS LEAF (UNII: 6IO182RP7A) (TOXICODENDRON PUBESCENS LEAF - UNII:6IO182RP7A)	TOXICODENDRON PUBESCENS LEAF	8 [hp_X] in 30 mL
RUTA GRAVEOLENS FLOWERING TOP (UNII: N94C2U587S) (RUTA GRAVEOLENS FLOWERING TOP - UNII:N94C2U587S)	RUTA GRAVEOLENS FLOWERING TOP	4 [hp_X] in 30 mL
KALMIA LATIFOLIA LEAF (UNII: 79N6542N18) (KALMIA LATIFOLIA LEAF - UNII:79N6542N18)	KALMIA LATIFOLIA LEAF	6 [hp_X] in 30 mL
ACHILLEA MILLEFOLIUM WHOLE (UNII: 2FXJ6SW4PK) (ACHILLEA MILLEFOLIUM WHOLE - UNII:2FXJ6SW4PK)	ACHILLEA MILLEFOLIUM WHOLE	2 [hp_X] in 30 mL
COMFREY ROOT (UNII: M9VVZ08EKQ) (COMFREY ROOT - UNII:M9VVZ08EKQ)	COMFREY ROOT	6 [hp_X] in 30 mL
APIS MELLIFERA (UNII: 7S82P3R43Z) (APIS MELLIFERA - UNII:7S82P3R43Z)	APIS MELLIFERA	30 [hp_X] in 30 mL

Inactive Ingredients

Ingredient Name	Strength
ALCOHOL (UNII: 3K9958V90M)	9 mL in 30 mL

Packaging

#	Item Code	Package Description	Marketing Start Date	Marketing End Date
1	NDC:17089-465-18	1 in 1 BOX	09/24/2020	
1		30 mL in 1 BOTTLE, DROPPER; Type 0: Not a Combination Product		

Marketing Information

Marketing Category	Application Number or Monograph Citation	Marketing Start Date	Marketing End Date
unapproved homeopathic		09/24/2020	

Labeler - Guna spa (430538264)

Establishment

Name	Address	ID/FEI	Business Operations
Guna spa		338587646	manufacture(17089-465)